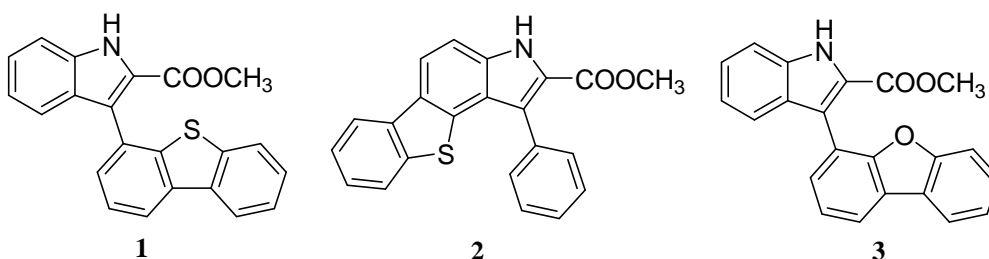


## Fluorescence studies of new potential antitumoral indole derivatives in lipid membranes

Elisabete M. S. Castanheira,<sup>a</sup> Ana S. Abreu,<sup>a,b</sup> M. Solange D. Carvalho,<sup>b</sup>  
Paula M. T. Ferreira,<sup>b</sup> Maria-João R. P. Queiroz<sup>b</sup>

a) Centre of Physics, b) Centre of Chemistry, University of Minho, Campus de Gualtar,  
4710-057 Braga, Portugal; e-mail: [ecoutinho@fisica.uminho.pt](mailto:ecoutinho@fisica.uminho.pt)

Many biologically active compounds, including some important anticancer drugs, include the indole nucleus. Three new indole derivatives recently obtained (structures shown below) were evaluated for their capacity to inhibit the *in vitro* growth of three human tumor cell lines, MCF-7 (breast adenocarcinoma), NCI-H460 (non-small cell lung cancer), and SF-268 (CNS cancer). Compound **1** showed the better results in all the three tumor cell lines ( $GI_{50}$  11-17  $\mu$ M), compound **2** showed only a moderated growth inhibitory effect in all cell lines and compound **3** showed better results for NCI-460 cell line ( $GI_{50}$  18  $\mu$ M) [1].



Fluorescence emission and fluorescence anisotropy studies of these compounds incorporated in lipid aggregates of DPPC (dipalmitoyl phosphatidylcholine), DOPE (dioleoyl phosphatidylethanolamine) and Egg-PC (egg yolk phosphatidylcholine) indicate that compounds **1** and **3** are located near the hydrophobic lipid tails and are able to detect the gel to liquid-crystalline phase of DPPC.

*Acknowledgements:* This work was funded by FCT and FEDER through CFUM and CQ-UM, project POCI/QUI/59407/2004 and post-Doc grant (SFRH/BPD/24548/2005) of A.S.A.

[1] M.-J.R.P. Queiroz, A.S. Abreu, M.S.D. Carvalho, P.M.T. Ferreira, N. Nazareth, M.S.J. Nascimento, *Bioorg. Med. Chem.* **2008**, *16*, 5584-5589.