

DETERMINANTS OF EXPORT DIVERSIFICATION AND SOPHISTICATION IN SUB-SAHARAN AFRICA¹

Manuel Herédia Caldeira Cabral (University of Minho, NIPE)

Paula Veiga (University of Minho, NIMA)

July, 2010.

Abstract

This paper studies the political and economic factors that determine successful export diversification (ED) and export sophistication (ES) strategies in the Sub-Saharan African (SSA) countries and also the way in which successful ED and sophistication strategies contribute to explain the improving in some of the millennium development goals (MDG). We run separate regressions for the determinants of ES and ED, using disaggregated data of the 48 SSA countries, from 1960 to 2005. The results suggest that better governance is an important determinant for the success of diversification and sophistication strategies in SSA. In particular the level of corruption, transparency and accountability are important factors in limiting or promoting the scope of diversification and the level of sophistication of the exports. The results also suggest that increases in human capital in SSA countries promote both ED and ES, showing that the level of education of the workforce is positively related with ES and ED, with higher levels of education (tertiary) playing a more important role in explaining ES, while lower levels of education (primary) being more important as determinants of ED. In the second part we explore the links between ED and ES and growth presenting evidence that ED and ES are linked to growth stability in SSA. This study also suggests that the Sub-Saharan countries that were more successful in achieving ED and ES tend to be more successful in improving the living conditions of their population. Using different variables of Infant Mortality (one of the MDG) and life expectancy as dependent variables, we present evidence that suggests that in SSA higher ED and ES are associated with lower infant mortality and higher life expectancy. We show that this result is robust, presenting positive and significant results even when a large number of different control variables are introduced, or when fixed effects and instrumental variables are considered. The evidence suggests that ED and ES are part of the solution for a successful development of SSA.

¹ This paper is part of the NBER project on African development successes described in Macedo and Pereira (2009). It was presented by the first author at the preconference and at the OECD statistics directorate. The authors thank NBER and the Center for Globalization and Governance at FEUNL for financial support and encouragement, and the participants in the NBER Africa Project pre-conference in February of 2009, and at an OECD seminar for their comments and suggestions and to João Farinha and José Mario Lopes for their assistance in setting up the database. We are also indebted to Jorge Braga de Macedo, Luis Brites Pereira, Joaquim Oliveira Martins and Nuno Sousa (EU) for their contributions to improving the paper. The usual caveat applies.

1 - INTRODUCTION

This paper aims to answer two questions: First, what are the main political and economic determinants of successful export diversification (ED) and export sophistication (ES) strategies for Sub-Saharan African (SSA) countries? Second, are ED and ES linked to economic growth, growth stability and to the ability to pursue the millennium development goals?

These are important issues, since overall SSA economies exhibit very low levels of ED and ES. Most of SSA economies have been unable to follow a sustainable path towards increasing exports diversification and sophistication. Their experiences differ from those of Asian developing countries. Over the past decades, Asian developing countries have been increasing their competitiveness and, at the same time, have been more successful both at diversifying and improving the sophistication of their exports.

Increasing the ED level is critical for SSA economies, since a high degree of concentration of resources in a few sectors increases the risks associated with external shocks (see Kalemli-Ozcan *et al.* 2003). The consequences can be particularly serious in cases where the core sectors of the economy are based in commodities with volatile prices, which is the case of the majority of SSA countries. ED strategies can take place in different forms and dimensions but are likely to involve moving into products of higher quality (Schott, 2004) or expanding into new markets (Brenton and Newfarmer, 2009).

In the present study we explore the role that institutional and political variables can play in promoting ED and ES in SSA countries. We believe that this is one of the important contributions of this study, since the role of institutional variables has not *been* widely studied in the empirical *literature*. Few studies, namely by Klinger and Lederman (2004, 2006) and more recently by Parteka and Tamberi (2008) have addressed these issues². In fact, most previous ED studies focus mainly on the empirical link between the level of diversification and the level of development (the ‘specialisation curve’)³.

² Moreover none of these studies use data from African countries, in which we expect that institutional factor play an important role in constraining the scope for diversification.

³ Imbs and Wacziarg (2003), Cadot *et al.* (2007), Koren and Tenreyro (2007) found a reversal in the relation between diversification and the level of development (with turning points calculated between 14.000\$ to 22.000\$), while an increasing trend has been revealed in trade studies incorporating country fixed

Another important contribution of the present study is to provide evidence that ED and ES can contribute to economic growth and stability as well as to improve well-being in SSA countries. Although several previous studies have discussed how per capita income may contribute to ED, there is still only limited evidence on the impact that ED and ES can have on growth and development, particularly in SSA countries. An exception is the recent study by Matthee and Naudé (2008). The authors analyze export diversification across South Africa's regions. Using export data from sub-national districts, the authors found that regions with lower level of export specialisation and more diversified exports tended to experience higher economic growth rates, and contributed more to South Africa overall exports.

There is also limited evidence linking ED and ES to income stability. Although one can find several references in the development literature blaming export concentration for growth instability, few studies have directly addressed this issue. Here we study how ED and ES contribute to growth and stability in the SSA and also how these contribute to improve the levels of development. The paper uses infant mortality and life expectancy as development indicators.

Our approach differs from the trade and development literature. Instead of focus on understanding how trade openness contributes to foster economic growth, this study is concerned with how different forms of involvement in international trade can contribute to increase growth and social conditions in SSA countries. The goal is to assess how different patterns of involvement in world trade (namely more or less diversified export structure or greater sophistication of exports) might contribute to growth and stability but also to a more balanced development, and in this way contribute to increase life expectancy or reduce infant mortality.

A basic raw data analysis (section 2) suggests that more diversified or/and sophisticated exports may have an independent contribution for development and improvements in the quality of life and health status of the populations. Data suggests that ED and ES may contribute to spread development across regions and social groups of countries which can contribute for social development. For this reason, we will focus

effects (e.g. De Benedictis *et al.*, 2006, and Parteka, 2007). In the present study we do not emphasize this issue since we focus only on developing countries.

directly in development variables instead of studying only the effects of ED and ES in increasing the exports or in the GDP growth.

The paper is organized as following: In Section 2 we present the raw data and discuss the hypothesis that data analysis suggest. Section 3 presents the data sources, the variables and econometric methods used in the regressions of sections 4 and 5. The regressions presented in section 4 consider ED and ES as dependent variables and try to access the determinants that explain the variation of ED and ES across the 48 SSA countries from 1960 to 2005 (45 years). This allows us to determine the factors that promote and inhibited ED and ES in SSA. We use two major variables to measure trade diversification (the Herfindhal index and the Theil index) and one variable to measure ES (the EXPY index)⁴. In section 5 we discuss why ED and ES are important for SSA. There we ask if ED and sophistication promote growth and stability in SSA, and contribute to improve life expectancy and to reduce infant mortality. Section 6 concludes.

2 - MOTIVATION

Graph 1 shows the evolution of the average number equivalent in the 48 SSA and in the Other Middle Income and Developing (MID) countries. A high concentration of exports in a limited number of products is a well known problem in virtually all developing countries but it is even more accentuated in the SSA countries. As the data clear shows, on average, SSA countries exhibit a lower level of export diversification than the other developing countries. Moreover, ED has been increased, on average, at a much slower pace in SSA countries than in other developing countries. Since the 1960's, ED increased in a marked way in the developing countries, particularly in those countries that have improved their level of development, which contrast with the stagnation experienced in SSA.

⁴ For each of these variables we calculated indexes at five different levels of aggregation (according to the trade classification of products of the OECD – SITC – Rev 2 – see data section for more details), resulting in 15 different dependent variables. We use the different levels as one way of test the robustness of the explanatory variables, checking if the results present reversions of signs or of significance. This was not the case for most of the explanatory variables. Thus we only report results for the variables calculated at the higher level of disaggregation (5 digits) and refer to the cases where robustness problems arise when alternative dependent variables where used.

Graph 1 here

Graph 2 here

Graph 2 presents the evolution of the GDP per capita in the SSA countries as well as in the other middle income and developing countries in the sample. The evidence, presented for the GDP per capita, is similar to that obtained for ED. The parallel between lower ED and lower increase in GDP per capita in SSA countries, when compared with the other developing countries, serves as motivation for the econometric work developed in the next section. The evidence suggests that a low level of ED is a part of the marginalization of Africa in international trade, and has been induced by this marginalization phenomenon.

Graph 3 presents the evolution of ES in SSA and MID countries over the last decades. It is evident from the graph that ES is lower in SSA countries than in the other MID countries. Nevertheless, the evidence suggests that there has been some improvement in the average level of sophistication in the recent years, although this progress is still unstable. The important evolution of ES in Asian countries during the recent years shows that developing countries can upgrade their level of sophistication.

Graph 3 here

Graph 4 here

Graph 4 plots the average number of NE of each country against its average GDP per capita. The evidence suggests that the positive relationship between the GDP per capita and ED found in previous studies can also be confirmed in a SSA sample. The graph for ES (not shown) presents similar evidence and also suggests a positive relationship between ES and GDP per capita exists in the SSA countries.

The data presented in graphs 5 and 6 is even more interesting. Graph 5 plots the average infant mortality rate against the average NE. The data strongly suggests that higher level of ED is related to a lower infant mortality rate. The same is true for ES. The relationship between ED and Life expectancy (Graph 6) suggests a positive relationship between the two variables. Once again when we use ES and life expectancy the results

are similar to those obtained with ES (Graph 7). The evidence presented concerns only SSA countries, but a similar distribution was found when all the 143 developing countries in our sample were included.

Graph 5 here

Graph 6 here

Graph 7 here

This evidence should be taken with care. The positive relationship may reflect the effects of other variables. To draw stronger conclusions a more solid econometric work has been done (see section 5).

3 – REGRESSIONS, DATA AND VARIABLES

3.1 – Econometric Methods

In the present study we estimate two general types of equations. The first uses the ED and ES indexes as dependent variables. The aim is to investigate which factors (determinants) inhibit or promote ED and ES. The results of these equations are presented and discussed in section 4. The second type of equations tries to explore the contribution of ED and ES variables for selected development goals. The equations presented in section 5 uses ED and ES as independent variables in GDP Growth, Growth variance, Infant Mortality, and Life expectancy regressions.

Different specifications were estimated and different econometric methods were applied. The general specification of the equations uses log-log pooled OLS estimation with robust standard errors. Alternative models such as fixed effect models and instrumental variables were estimated to deal with potential econometric problems such as endogeneity and omitted variables – see section 5.2. Different specifications were also considered to test the robustness of the explanatory variables. Overall, the results that support our main conclusions appear to be robust.

The general formulation of the first type of equations is:

$$\ln ED_{it} = A + B_2 \ln POP_{it} + B_3 \ln YPC_{it} + B_4 (OTHER_{it}) + B_5 (INST_{it})$$

$$\ln ES_{it} = A + B_2 \ln POP_{it} + B_3 \ln YPC_{it} + B_4 (OTHER_{it}) + B_5 (INST_{it})$$

Where the dependent variables ED_{it} and ES_{it} are respectively the ED and the ES indexes of country “i” in the year “t”.

The explanatory variables reflect an eclectic approach, where the economic variables (such as level of development, endowments, size of the economy, and education of the work force) are used simultaneously with geographic variables (such as distance or those reflecting a landlocked country) and institutional variables for each country (such as governance, control of corruption, education spending, etc).

Previous studies present evidence that ED is correlated with income, and that higher levels of ED are associated with higher long-run growth. The literature about ES also suggests that ES promotes faster growth. We replicate these results for SSA, but using a different approach. Our study focus mainly how different forms of international trade involvement contribute to improve the level of development of the SSA countries.

In section 5, we use ED and ES variables as explanatory variables to explain not only GDP growth and Growth stability, but also to verify if diversification and sophistication of the exports are associated with other development goals. The rationale for this exercise is the following: Different forms of involvement in international trade may have different results. Very concentrated exports tend to be associated with high rents that can be easily appropriated by a narrow group. A more diversified export base is expected to be associated with less volatility and might involve a wider range of regions, sectors, skills and professions, and thus a wider proportion of the population benefiting from the gains of globalization. Following this line, we will study if ED and ES promote growth, and if they are associated with less GDP variance, and with development goals. As noted before we will focus infant mortality and life expectancy and try to access how different patterns of involvement in world trade (namely more or less diversified export structure or greater sophistication of exports) might contribute to a more balanced

development and in this way give a stronger contribute to improve some of the development goals, than the mere effects of increase in exports or in the GDP growth.

Once more it is particularly interesting to link the trade variables to the institutional ones to study the empirical links between more diversified and more sophisticated export structures and development indicators. This allows us to assess the role of ED and ES in promoting a successful and sustainable development in SSA.

So the second type of models will be given by the general form:

$$\ln\text{GROWTH}_{it} = A + B_1(\ln\text{ED}_{it}) + B_2(\ln\text{ES}_{it}) + B_3(\ln\text{OTHER}_{it})$$

$$\ln\text{VARGROWTH}_{it} = A + B_1(\ln\text{ED}_{it}) + B_2(\ln\text{ES}_{it}) + B_3(\ln\text{OTHER}_{it})$$

$$\ln\text{INFANTM}_{it} = A + B_1(\ln\text{YPC}_{it}) + B_2(\ln\text{ED}_{it}) + B_3(\ln\text{ES}_{it}) + B_4(\ln\text{OTHER}_{it})$$

$$\ln\text{LIFE}_{it} = A + B_1(\ln\text{YPC}_{it}) + B_2(\ln\text{ED}_{it}) + B_3(\ln\text{ES}_{it}) + B_3(\ln\text{OTHER}_{it})$$

Where the dependent variables are different measures of the different development goals (life expectancy, infant mortality⁵), and the explanatory variables will include the level of development (YPC), export diversification (ED) and export sophistication (ES), and other control variables, which include trade policy, institutional, and other economic and geographic variables. The variables are described in Table B in annex.

The results presented are for log-log model which has a better fit than the linear regression or other specifications tried. We also estimate robust standard errors to correct for heteroskedasticiy. The robustness of the results were tested by considering a Fixed Effects instrumental variable approaches to deal with potential omitted variable and the endogeneity of the ES and ED variables⁶.

⁵ We also considered mortality rate of children under five years old

⁶ We also considered Probit models, using the probability of export diversification and export sophistication to be above a certain alternative thresholds.

3.2 – DATA AND VARIABLES

The data used came mainly from the OCDE SITC trade data and from the World Bank tables. Table B in appendix presents a short description of the variables and its sources. Here we describe in more detail the most important variables, in particular those of ED and ES.

3.2.1 - Trade Variables

a) Herfindahl Index and Number Equivalent

The Herfindahl Index is given by:

$$H = \sum_{i=1}^N s_i^2$$

In which s_i is the share of each product in total exports of each country ($s_i = X_i / \sum X_i$), with X_i being the exports of each good “i” of each country “j” in year “t”. The Herfindahl index is a concentration index. Instead of using this directly we use the Number Equivalent proposed by the same author, which is a diversification index:

Number Equivalent = ED = 1/H

b) Theil Index

We also use the Theil index, mostly to confirm the robustness of the results obtained by the ED index (the Number Equivalent).

$$T_T = \frac{1}{N} \sum_{i=1}^N \left(\frac{x_i}{\bar{x}} \cdot \ln \frac{x_i}{\bar{x}} \right)$$

In which the x_i are the exports of each product, and the average value of the exports of each product is given by:

$$\bar{x} = \frac{1}{N} \sum_{i=1}^N x_i$$

In which N is the total number of products. If the exports are divided in a even way by all the product categories this index will be zero, if on the contrary these are all concentrated in one single category then the maximum value will be obtained, a value of $\ln(N)$

c) EXPY and PRODY indexes.

We also calculated the EXPY and PRODY indexes to determine the level of sophistication of the exports of each country.

$$PRODY_{i,t} = \sum_c \left[\frac{\left(\frac{xval_{c,i,t}}{\sum_i xval_{c,i,t}} \right)}{\sum_c \left(\frac{xval_{c,i,t}}{\sum_i xval_{c,i,t}} \right)} \times GDPpercapita_{c,t} \right]$$

$$EXPY_{c,t} = \sum_i \left(\frac{xval_{c,i,t}}{\sum_i xval_{c,i,t}} \times PRODY_{i,t} \right)$$

4 – DETERMINANTS OF EXPORT DIVERSIFICATION AND SOPHISTICATION IN SUB-SAHARAN AFRICA

4.1 – THE EFFECTS OF GEOGRAPHY, LEVEL OF DEVELOPMENT AND ENDOWMENT VARIABLES

The first step in the study is to estimate a model based on previous ED studies. This “standard” model, that will be use as a benchmark, includes as independent variables the level of development (YPC – GDP per capita), the size of the country (POP⁷), endowments (OIL and LANDPC) as well as geographic characteristics, such as being a landlocked country (LANDLOCK). Then, we will add several variables to the model. This exercise will allow us to evaluate the role of different political and institutional variables in explaining ED and ES.

The per capita income (YPC) variable has been used in a large number of studies focusing on the specialization curve question (Imbs and Wacziarg, 2003; De Benedictis *et al.*, 2009; Parteka, 2007; Cadot *et al.*, 2007 and Koren and Tenreyro, 2007)⁸. The evidence suggests that, in developing countries, there is a monotonic increasing relationship between the level of development and the export diversification. This is consistent with theoretical contributions that stress the limited diversification opportunities at lower levels of development, namely because of the scarcity of capital and the indivisibility of investment projects (e.g. Acemoglu and Zilibotti, 1997).

The size of the economy appears also to be an important determinant of ED level. The monopolistic competition models (Dixit and Norman, 1980; Krugman, 1981; Helpman and Krugman, 1985) argue that market size directly affects the degree of product differentiation, with bigger countries being able to produce wider range of goods, since there are scale economies. The size of economy was also considered in several

⁷ Alternatively, the GDP was also considered as a measure of economic size. The results were similar. We chosed the POP variable because the GDP variable raised multicollinearity problems in the regression when used simultaneously with YPC, affecting in some cases the significance of this variable (that was still validated at the 1% level in most cases, but when a large set of control variables was considered would became only significant at the 5% level).

⁸ Some of the studies found a U-shaped relationship between per capita GDP and industrial specialisation pattern, which implies that above a certain level higher development may lead to a reversal of the degree of diversification. Nevertheless in all studies the turning point was well above the income level of the developing countries.

previous empirical studies. (e.g. Hummels and Klenow, 2005; Parteka and Tamberi, 2008). Their results confirm a positive relation with ED.

The New Economic Geography models (Krugman and Venables, 1990, 1995; Amiti and Venables 2002; Venables and Limão 2002) suggest that transport costs and distance have an effect in the level of specialization of a country. According to the models, a lower distance to the main world markets, access to the sea and overall lower transport costs, determine the ease with which a country can increase the variety of products exported to the world markets.

Using a sample of developed and developing countries Parteka and Tamberi (2008) find that transport costs discourage ED. Matthee and Naudé (2008), using data from the regions of South Africa, found that domestic transport costs are inversely related to the degree of ED concluding that “most districts with high export diversity values are located within 100 km of the nearest port”. This evidence suggests that landlocked countries or areas distant from the sea face extra difficulties to diversify export. This is consistent with the evidence found in previous studies revealing that landlocked countries face higher transport costs and have lower trade volumes than coastal countries (Radelet and Sachs, 1998; Limão and Venables, 2001).

Trade liberalisation, in a context where economies of scale and transport costs play an important role, is also likely to affect product diversification (Krugman and Venables 1990, Haaland *et al.* 2002), with important gains from trade that can cause increases in product diversification (Costas *et al.* 2008). Nevertheless, the New Economic Geography models also stress that the decline in transaction costs brought by trade liberalization may decrease the diversity of production (and therefore, the export diversification) particularly in peripheral countries.

The abundance of natural endowments also is likely to limit the scope of diversification, and sophistication of the export structures, since countries abundant in one resource tend to have highly concentrated export structures (Harrigan and Zakrajsek, 2000). This problem is particularly important for the SSA countries since several of them are oil exporting countries or are largely dependent on few agriculture cash crops.

Significant and consistent results were obtained for the five variables included in the “standard” model when used to explain the Number Equivalent, calculated at

different levels of aggregation⁹, and alternative export concentration measures, namely the Theil index. Table 1 reports the results for ED regressions, using NE as a measure of ED.

The signs of estimated coefficients in the “standard” model are consistent with those obtained in previous studies¹⁰. Together they explain almost 37% of the variation of the Number Equivalent (see Table 1). The results suggest that higher level of development (YPC) is associated with more diversified exports. According to the model estimates, everything else constant, a 10% increase in the level of development would result in a 2% increase in the number equivalent. This result confirms previous evidence that suggested a negative relation between export concentration and level of development for the case of developing countries. Our results also confirm that the size of the country (POP) is positively related to ED. The estimated coefficient suggests that a SSA country with double of the average population would have exports that are, on average, 15% to 25% more diversified than an average size country in the region.. The variables of the “standard” model were used also to explain the indexes of export sophistication (EXPY). Table 2 reports the results. The positive relation between ES and the level of development comes as no surprise. The results for the SSA sample confirm a positive and significant relationship between the YPC and the ES index, which suggests that the indexes developed by Hausman et al. (2005) can be applied to study the African case.

Perhaps, more interesting is the estimated relationship between the level of ES and the size of the economy (see table 2). The results suggest that the size of the economy is an important determinant of the level of ES, such that bigger economies tend to have more sophisticated exports. This result is valid when the model controls for the YPC and it is robust to the disaggregation of the data used to calculate the indexes of ES. The size

⁹ We calculated the ED and ES indexes (Herfindhal, Theil and EXPY) using data disaggregated in five different levels, according to the categories of the SITC trade data (Rev2). In the rest of the work we only report the results using indexes calculated with the most disaggregated data, since they give a more accurate and detailed picture of country's exports. In the case of the ES the more disaggregated indexes are also more rigorous since they reflect the level of sophistication of the exports in a more accurate way. In general, the results are similar independent of the level of disaggregation used. Nevertheless, the results tend to be less strong and more inaccurate when indexes when very aggregated data are used, namely when the 1 and 2 digit categories are chosen.

¹⁰ The positive signs for YPC are in accordance with what is expected for a sample of developing countries. The sign for the variable about size (POP) is consistent with the results obtained in former studies and so are those about endowments (OIL, LANDPC) (see Parketa and Tamberi, 2008). The negative sign for LANDLOCK supports the thesis that transport costs inhibit diversification.

seems to have an even more pronounced effect in the sophistication of exports in the case of the SSA countries than other developing countries. This result suggests that the lack of dimension, the failure to sustain industries with more important internal and external economies of scale, and the inability to achieve the positive externalities of agglomeration of economic activity, might help to explain the limited progress in some African countries towards a more diversified and sophisticated structure of their exports. This is an interesting result that suggests that the efforts towards a regional integration, by increasing the economic size in which SSA firms can operate, might play an important role to successful ED and ES strategies

Although there are important similarities, the results clearly show that ES and ED are two different phenomena¹¹. The variables LANDLOCK and OIL are not significant when used to explain ES, while are important determinants of ED. Only the availability of land-per-capita appears to affect both ED and ES. An interpretation of the capability of this variable in explaining ES is that it reflects a comparative advantage in exporting agricultural goods which is associated to lower levels of sophistication¹².

4.2 – INSTITUTIONAL AND POLITICAL VARIABLES

An important hypothesis of our work is that institutional, political and governance variables play an important role to explain the ability of the SSA countries to successfully promote diversification and sophistication of their export structures. Therefore, we included in the regressions the governance variables, namely indicators of corruption, rule of law and political stability, and test how these explain ED and ES levels.

The evidence presented in Table 2 suggests that there are some differences in the determinants of ES and those of ED. The fact that a country is landlocked and/or exports oil does not seem to affect ES in a significant way (see Table 2- equation 2). In the case of ED, on other hand, these two variables appear to give an important contribution. On the other hand there are also similarities in the determinants of ED and ES. The size and

¹¹ The ES indexes are very recent and there is no agreed set of determinants established in the literature.

¹² In the sense that most of the countries specialized in exporting primary products are developing countries. This results in lower PRODY indexes for the agricultural products. Another interpretation is that land per person reflects the low population density, which might result in dispersion of economic activity.

level of income contributes to increase both ED and ES, while land abundance is associated with lower ED and ES.

We considered 26 different governance and institutional variables. Given that these variables are likely to be strongly correlated, separate regressions will be run. The estimated coefficients for ED regressions are presented in Table A.1. Results suggest that in case of the ED, when the regressions include only a small set of control variables (only POP and YPC) 19¹³ out of the 26 coefficients were positive and statistically significant. This can be interpreted as evidence that better governance is associated with more ED. Nonetheless, when more control variables are included in the regressions¹⁴, several of the governance and institutional coefficients lose their statistical significance at conventional levels. Only six variables, appear to be robust¹⁵. Their estimated coefficients are positive and statistically significant even in a full model. The results are very interesting. According to them improvements in government accountability (GVA), rule of law (GRLAW), political stability (GST), effectiveness (GEFFECT), and control of corruption (GCORRUPT), may contribute to expand the scope of products that a country is able to export.

The estimated coefficients suggest that the effects of better governance are of similar magnitude than those of increasing education spending and being in a landlocked country (with opposite sign). Moreover, the effects of better governance appear to be bigger than the marginal effect of economy size and level of development. Another interesting result is that the environment sustainability rating presents a significant positive sign in all regressions explaining ED.

In what concerns the role of institutional and political determinants of export sophistication there are marked differences with the results obtained in the ED

¹³ Amongst the remaining 7, 3 obtained non-significant results, and other four present evidence contradictory with what was expected, with significant coefficients.

¹⁴ The extended equation included POP and YPC, along with four other variables: LANDLOCK, OIL, LANDPC and EDUSPEND.

¹⁵ These variables obtain very consistent results that are robust to the inclusion or exclusion of these variables and also of a large number of others tested. The inclusion/exclusion of these variables did not affect the robustness of these six institutional and governance variables. The results were also consistent when alternative ED variables were considered, namely the Theil index, and the ED index calculated at different levels of aggregation.

regressions. Most of the six robust governance and institutional variables explaining ED are not statistical significant in ES regressions.

The evidence suggesting that governance and institutional factors affect the sophistication of the exports of the SSA countries is weaker. The majority of the institutional variables (15 out of 26) are not statistical significant at conventional levels of significance, even when the models control only for a small number of other variables¹⁶. The results are difficult to interpret. They may be due to the limitations of the available governance indicators or due to the small variance of these variables within SSA countries sample¹⁷. The results reveal that the estimated coefficient in 7 governance and institutional variables are positive and significant, and in other two are negative and significant as well.

The variables that appear to impact positively the level of ES in SSA are “transparency, accountability and control of corruption in the public sector” (GTRAN), the “debt policy rating” (GDEBT), “economic management cluster average” (GECON), the “debt policy and the fiscal policy rating” (GFISP), “Policies for social inclusion” (GSOCI) and “gender equality” (GNDR). On other side the estimated coefficients for GCORRUPT, and (GRQ) are negative, suggesting a negative association between the level of control of the corruption and of regulatory quality and ES, which are difficult to interpret.

4.3 – EDUCATION AND QUALIFICATIONS

The level of qualifications of the workforce and the efforts made in education are expected to have an important impact on the capability of each country to diversify and upgrade the quality and sophistication of their exports. Recent intra-industry trade (IIT) models based on the vertical IIT tradition emphasize the role of the level of qualifications in promoting product differentiation (e.g. Gullstrand, 2000).

The role played by education and human capital quality in promoting ED or ES has not been fully explored in the literature. The recent study by Parketa and Tamberi (2008) is one of the few exceptions. The authors emphasise that higher quality of human

¹⁶ When only POP and YPC variables are considered as control variables.

¹⁷ It may also reveal the limits of the sophistication index (EXPY) for classifying the level of sophistication of exports of countries which have a large share of their exports based on natural resources.

capital facilitates the production diversification and increases the rate of new activities in the economy. The authors also claim that human capital affects export diversification, namely through product innovation.

In this paper we are concern with both aspects, that is the level of qualifications and the effort make in education. To capture the level of qualifications we use as variables the percentage of the labor force with at least primary education, secondary or a tertiary level of education. To capture the education efforts we use a variable on the share of GDP spent in education (EDUSPEND). Table 3 reports the estimated coefficients for education variables,

The results suggest that export diversification tends to increase with the share of GDP spent in education. The estimated coefficient on EDUSPEND is positive and statistically significant at conventional levels (see table 3). The governance variable reflecting *building human resources index* (GHRES) also obtains a significant and positive result, on ED regressions, although is less robust¹⁸.

This evidence suggests that improving the education standards of the labor force is determinant for a successful export diversification strategy in SSA countries¹⁹. Our results indicate, everything else constant, investments in lower levels of education have higher return in terms of ED. Indeed the results indicate that improving the lower levels of education has a stronger effect in promoting the diversification of the economy. On other hand the efforts in increasing the higher level of qualifications does not have a very clear effect on ED²⁰.the estimated coefficients are positive and statistically significant in the “standard” model but are not robust when more control variables are added. These conclusions have obvious and important policy implications

The results obtained for ES are different of those for ED. The estimated coefficients of EDUSPEND and *building of human resources* (GHRES) are not statistically significant at conventional levels, while those for variables on the percentage of population within each level of qualifications, suggest that higher levels of education are more important in explaining ES (see equations 9, 10 and 11 of table 3).

¹⁸ See table A1 in appendix. The coefficient of this variable became non significant when larger number of control variables were included.

¹⁹ See the results for the variables EDUPRIM, EDUSEC, EDUTER and EDUSPEND.

²⁰ In equation 4 a negative and significant result is shown for the coefficient of the variable that reflects the percentage of the workforce with higher education.

5 – EXPORT DIVERSIFICATION AND SOPHISTICATION AND GROWTH AND DEVELOPMENT IN SUB-SAHARIAN AFRICA.

5.1 - DIVERSIFICATION, SOPHISTICATION, GROWTH AND INSTABILITY

The theory of endogenous growth suggests that export diversification may be favorable to development (Feenstra *et al.* 1999) and to the rate of economic growth. China and several other Asian economies are good examples of diversified economies with fast growing rates. Their results contrast with other areas such as SSA that combine slow growth and strong export concentration for long time. This evidence is consistent with several results in the literature that suggest that those developing countries that diversify their exports experienced faster growth (De Piñeres and Ferrantino, 1997; Herzer and Nowak-Lehmann, 2006). Moreover, cross-country comparisons found that ED is positively associated with long-term rates of growth (e.g. Al-Marhubi, 2000; Funke and Ruhwedel, 2005). There is also evidence pointing out that an increase in export variety raises the productivity level of industries (Feenstra and Kee, 2008). In a recent study of Matthee and Naudé (2008) show that “*Regions with less specialisation and more diversified exports generally experienced higher economic growth rates, and contributed more to overall exports from South Africa*” - Matthee and Naudé (2008: 2).

Diversification may also contribute to lower growth instability. Some authors argue that a broader export base reduces economic instability (e.g. Ali *et al.*, 1991). Their argument is that fluctuations in price or demand and changes in comparative advantage in one sector have important impacts on overall exports of a country. In same line, other authors stress that when exports depend on a small number of sectors and these experience fluctuations in demand or prices, or face new competitors, this instability may limit the average growth of the economy (Al-Marhubi, 2000). Instability of the export revenue may also affect growth by affecting investment decisions (Dawe, 1996). In sum, export diversification may be important for growth and stability, since it implies a dispersion of the risk by a larger numbers of sectors. In the case of SSA countries, their diversification may mean a shift in the composition of exports from primary products to manufactured products, which prices are less instable than those of primary exports (Ali,

et al., 1991). An increase in manufactured exports may also, in the context of SSA, contribute to increase the level of sophistication of their exports. Hausmann *et al.* (2007) argue that the composition of a country's exports matters, since exporting more sophisticated and higher productivity goods may lead greater export performance and higher growth. An overall increase in the level of sophistication of the production may also presents externalities and spillovers. These externalities benefit other economic activities and improve the ability of more industries to compete internationally (Herzer and Nowak-Lehmann, 2006).

Here we use the PRODY and EXPY indexes proposed by Hausmann, et al. (2007) to investigate how increasing sophistication can contribute to a higher growth and stability in SSA countries. Table 4 and 5 present the results of the estimations for the role of both ES and ED.

The results suggest that ED contributes to GDP and export growth in the SSA countries. Nevertheless, the coefficients of the export growth estimates are not robust. The estimated coefficient becomes not statistically significant when country fixed effects are introduced. Only in the GDP growth regressions, we find positive and significant coefficients for the ED variable both with and without fixed effects.

The OLS pooled regressions suggest a positive relation between ES and the rate of growth of GDP, YPC and Exports (Table 4). Nevertheless, in the country fixed effects model (Table 5), only the estimated coefficient on the *export growth* variable remains significant although only at the 10% level. One can also notice that the R^2 of the first six equations are very low, so ED and ES seem to explain very little of the variance of the growth variables. In the end, these two variables are not very robust and are able to explain only a very low proportion of the total variance of the growth variables. These results lead us to conclude that the evidence fails to confirm a positive and robust relation between both ED and ES and growth in SSA countries.

The results are more interesting in what concerns the variance of GDP and YPC. Higher levels of export diversification and sophistication are associated to lower variation

in the rate of growth of both GDP and per capita income. These results remain robust when country fixed effects are considered.²¹

The estimated coefficients suggest that a 10% per cent increase in the index of export diversification leads to a 4,6% decrease in the GDP growth variation and to a 4,4% reduction of income per capita growth variability. On other side, the estimated coefficients suggest that increasing the level of sophistication by 10% reduces GDP and YPC variance in 3,1%. The country fixed effects model suggests that the increasing sophistication may have a stronger marginal effect in decreasing economic instability than diversification, in the SSA countries.

The R^2 in GDP and YPC regressions are still low, but nevertheless are much higher than those obtained for the growth models. Still the model only explains a maximum of 5,4% of the variation of GDP and YPC instability.

5.2 – INFANT MORTALITY AND LIFE EXPECTANCY

In the previous section we have discussed the relationship between ED and ES and economic growth, change in income per capita and export expansion. The results obtained, although suggesting a positive relationship between ED and ES and growth in SSA countries, were not (very) robust. Nonetheless, the results for the variance of economic growth and income per capita growth, suggest that the contribution of increasing ED as well as ES in countries development may go further than the effects on GDP growth.

The expansion of the GDP and income per capita are important in the development process, and should be seen as instruments of development. Moreover, in the context of SSA, is it also interesting to explore how ED and ES may affect other development variables that are linked to development and to quality of life improvement. In this section we investigate the contribution of ED and ES to socioeconomic development, namely their contribution to health indicators such as infant mortality and life expectancy.

²¹ Although the coefficient of the ED variable is only significant at the 10% level when it is used to explain the variance of per capita income.

We believe that this is an important contribution of this paper. There is little work on how trade affects development variables directly relating changes in trade patterns to health status and quality of life of the populations of the developing countries. In these countries, and particularly in SSA, that fact that trade openness contributes to growth (Frankel and Romer, 1999), cannot be taken as a warranty that it will contribute to improve life conditions of the majority of the population.

An exception is the recent paper by Levine and Rothman (2006) that studies how trade openness may affect child health. The authors investigate the argument that trade openness may “lead to a race to the bottom that increases pollution and reduces government resources for investments in health and education” (Levine and Rothman 2006: 538). They conclude that “openness to trade predicts slightly reduced rates of infant mortality, child mortality (Levine and Rothman, 2006 : 552). A similar line of research was done Owen and Wu (2007). The authors concluded that “increased openness is associated with lower rates of infant mortality and higher life expectancies, especially in developing countries” (Owen and Wu 2007: 660).

Here we go further than previous research by considering how different forms of trade expansion affects directly not only child health (infant mortality), but also the overall life conditions of the population (reflected in Life Expectancy). Our study also differs from the previous by focusing on SSA countries.

Different specifications were estimated to investigate the robustness of the evidence. Since both Infant mortality (INFANTM) and Life expectancy (LIFE) indicators tend to improve with the increase of income per capita of a country (YPC), we use YPC as a control variable in every specification and, following Owen and Wu (2007) warning that “some of the positive correlation between trade and health can be attributed to knowledge spillovers and to the fact that trade openness is associated with sound economic policies which themselves are related to better health outcomes” (Owen and Wu, 2007: 660), we also insisted in including wide range of control variables reflecting governance²² Table 6 presents the results of the estimated OLS models with robust standard errors.

²² The variable that reflects control of corruption (GCORRUPT) was included in the regressions. The inclusion of this variable raises multicollinearity problems when the model controls simultaneously to other

Overall, our results suggest that higher levels of ED and ES are associated with lower infant mortality and higher life expectancy. Both ED and ES are linked in a significant and robust way with improving infant mortality and life expectancy. Moreover, the results were robust showing that the impact is independent of the impact of ED and ES on income per capita. These results have not been established in previous empirical literature.

Looking first to infant mortality regressions (MINFANT), the results indicate that, on average, a 10% increase in the level of ED declines infant mortality by 0.77%²³. Moreover, the results indicate that ED has a marginal impact of approximately one fifth of the marginal impact of per-capita income (YPC). Having a diversified export structure seems to add something extra to the economic and social setting that allows the countries to reduce more strongly the infant mortality. According to our estimates, ES has on average a stronger contributing to reduce infant mortality than ED.

Equations 4 and 5 (of Table 5) include an interaction of ED and ES variable. The result, when this variable is used simultaneously with ED or ES, suggests a process where ED is pushed by ES and reinforces the effects of ES. The combined effect of ES and ED, suggests that the contribution of sophistication reinforces that of diversification in explaining both infant mortality and life expectancy, and that the effect of each of the two variables cannot be separated²⁴.

institutional and governance variables. For this reason the different governance variables were estimated separately. All estimated coefficients presented similar signs- The presence of these alternative governance variables did not affected significantly the signs or the significance of the coefficients of the variables ED and ES.

²³This means that that if the level of export diversification of SSA increased to the average of the other developing countries that would contribute for a reduction of 24% in the level of Infant mortality.

²⁴The results were similar when all the other control variables were included. These were also consistent with the results obtained for the mortality of children under 5 years old and for life expectancy.

Testing Robustness: Including more control variables

In this section, we address the potential omitted variables bias and demonstrate that our results are robust to the inclusion of several different additional control variables. In first attempt to control for potentially omitted variables, we included additional variables in the model (See equations 6 and 7).

The estimated coefficients have the expected signal and apart from the variable LANDLOCK, they are significant at conventional levels. As shown in table, ED and ES are quite robust; the introduction of these variables seems to affect very little the size and the significance of the coefficients associated with the ED and ES variables in infant mortality regressions. Other control variables were also included, namely those reflecting the size of the economy (POP or GDP), level of education of the work force and governance (GVA, GST, GRLAW, GEFFECT, GRQ)²⁵. The coefficients of the variables ED and ES remained significant at the 1% level. .

A similar impact of ED and ES is also found when we consider alternative dependent variables, namely the mortality rate of children under 5 years old and Life Expectancy. The results are coherent with those found for MINFANT, which appears to indicate that ED and ES have indeed an independent and robust impact on social and economic development.

Testing Robustness: Fixed Effects and Instrumental variables

In a second attempt o address potential omitted variable bias we used fixed effects technique adding dummies controls for country. The results are presented in table 7. After controlling for countries unobservable characteristics the impact of ED and ES became slight lower, but still negative and more important the coefficients are statistical significant at conventional levels. Moreover, when fixed effects are considered, the coefficients confirm that increases in ES might contribute in a more pronounced way to reduce infant mortality than proportional increases in YPC.

²⁵ The evidence suggests that the better is the governance of each country, measured by any of the variables considered, the lower will be infant mortality and the higher will be life expectancy. The results for the variables reflecting size of the country are not significant in most cases.

There is another possible source of bias when Pooled OLS is used to estimate these relationships. ED and ES variables may be endogenous in the health outcome variables because social and economic development may also, at least in part, affect the decisions and process regarding ED and ES.

A common solution for the simultaneously bias is to use the Instrumental Variables (IV) estimator. Good instruments are difficult to find, since they should be simultaneously relevant and valid. That is, instrument(s) should be correlated with the endogenous regressor(s) and at the same time orthogonal to the error term.²⁶

Another potential problem is the presence heteroskedasticity. Pagan-Hall test rejected the null hypothesis of homoskedasticity of all models tested and therefore we use the GMM method to estimate the models. Country intra-group correlation was also taken in account. We use the Stata package IVREG2²⁷ proposed by Baum *et al.* (2007).

The first step we undertake was to test whether the ED variable is actually endogenous in the infant mortality regression. Exogeneity of both ED and ES could not be rejected in any specification²⁸ and therefore OLS provide consistent estimates. The reliability of the C-test is nonetheless based on the quality of the (excluded) instruments; that is the relevance and validity of the instruments.. To test the relevance of the instruments we first analyze the partial R^2 of the first stage regressions with the included instruments “partialled out”, which is equivalent to perform a F-test on the jointly significance of the excluded variables (instruments). F-test rejects the null hypothesis that

²⁶ We test several alternative set of variables as potential instrumentals for ED/ES. The pre-selection of the instruments was guided by the literature. A natural choice was the lagged values of ED/ES (5 years and 10 years) We also use as instruments the Population size (and population size squared) variable. Previous work also find that population is associated with ED (e.g. Parketa and Tamberi 2008). The previous analysis suggested that “landlocked” could also be treated as an excluded instrument. There are theoretical grounds to believe that the size of the country and the fact that it is landlocked are related to ED (as previous shown) but do not directly relate with infant mortality (as well as other alternative dependent variables: INFANTM5 and LIFE). Therefore the estimated model does not include landlocked as a variable in second step. Furthermore, “landlocked” also pass the orthogonality and redundancy tests. Relevance suggested that “population squared” and 10 years lagged value were irrelevant instruments and then were not considered in the reported regressions.

²⁷ IVREGRESS in STATA 10 would of course produce same results. The main advantage of using IVREG2 in context of only one endogeneous variable is that allows to easily test the orthogonality and relevance of the instruments

²⁸ The most common test to address endogeneity is the Hausman test. The IVREG2 command automatically reports “GMM C statistic test”, which under i.i.d assumption is equal to the Hausman test. The null hypothesis is that the variable is exogenous. The results show that the C-test did not reject the null hypothesis that the variable is indeed exogenous and thereby that OLS regressions are consistent

the coefficients of the instruments from the first stage regression are zero. Moreover the partial R^2 are also high in every specification. Therefore the instruments pass the significance test. To validate the exclusion restrictions we employ the Hansen J statistic test. Hansen-Sargan test is an overidentification test for IV-GMM estimation routinely calculated by `ivreg2`. The null hypothesis is that the instruments are valid, i.e, uncorrelated with the error term. A strong rejection of the null hypothesis of the Sargan–Hansen strongly casts doubt on the validity of the estimates. Since the test fails to reject the null hypothesis it increases the confidence in our identification

Tables 8 and 9 summarize the results of the instrument variable tests.

6 – CONCLUSIONS

In this study we investigate the political and economic factors that may contribute to successful ED and upgrading of ES strategies in the Sub-Saharan African countries. We also study the effects of ED and ES on growth and growth stability as well as in other development variables, namely infant mortality and life expectancy.

In the last decades, SSA countries exhibit very low levels of diversification, a factor that may have contributed to explain some of their income instability.

Using regression analysis in a panel of 48 SSA countries and 45 years, we confirmed that most of the findings of previous studies also apply to SSA countries, namely that the level of development and the size of the economy are positively correlated with ED. We also found that Economies with bigger populations (or GDP) also tend to have higher levels of ES.

The results about size of the economy having an important effect on both ED and ES, along with the indirect evidence, that transport costs inhibit diversification in SSA, lead us to think that economic geography factors play an important role in explaining the low levels of diversification and sophistication of the SSA exports. This suggests that increase in integration and efforts to reduce transport costs may have a positive effect in promoting ED and ES in the sub continent.

The results suggest that improvements in institutional, political and educational factors may play an important role in promoting ED and ES in SSA area. When used to

explain ED, 19 out of the 26 governance variables presented significant positive signs. The results were particularly robust for the World Bank variables reflecting government accountability, respect for the rule of law, political stability, effectiveness, and control of corruption.

On other way , the evidence is weak for ES. The estimated coefficients for majority of the institutional variables (15 out of 26) included in ES regressions are not statistical significant at conventional levels of significance. The evidence is not very clear about the relation of the governance and institutional factors with the sophistication of the exports in SSA. Nevertheless, the variables reflecting “transparency accountability”, and control of corruption in the public sector”, the “debt policy and fiscal policy rating”, “economic management cluster average” and the level of the “policies for social inclusion” seem to contribute in a positive way to explain the levels of ES in the SSA countries.

The results suggest that improving the education standards of the labor force is important for a successful ED strategy in SSA countries. It also suggests that increasing the lowest levels of education is likely to have a stronger effect on the ED level, while higher levels of education are more important in explaining the level of sophistication of the exports.

In the present study we also investigated the contribution of ED and ES to growth, stability and development in the SSA countries. The results, for equations in which ED and ES were used to explain GDP growth, suggest a positive relation between both ED and ES and growth. Nevertheless, this relationship was not robust.

More interesting were the results obtained for the variance of GDP and Income per capita growth. The evidence suggests that higher levels of ED and sophistication are associated to lower variation in the rate of growth of both GDP and per capita income. The estimated coefficients suggest that a 10% per cent increase in ED leads to a 4,6% decrease in the variation of GDP growth and to a 4,4% reduction of income per capita variability. Similar results were obtained for ES, with country fixed effects model suggesting that increasing sophistication may have a stronger marginal effect in decreasing economic instability than diversification, in the SSA countries.

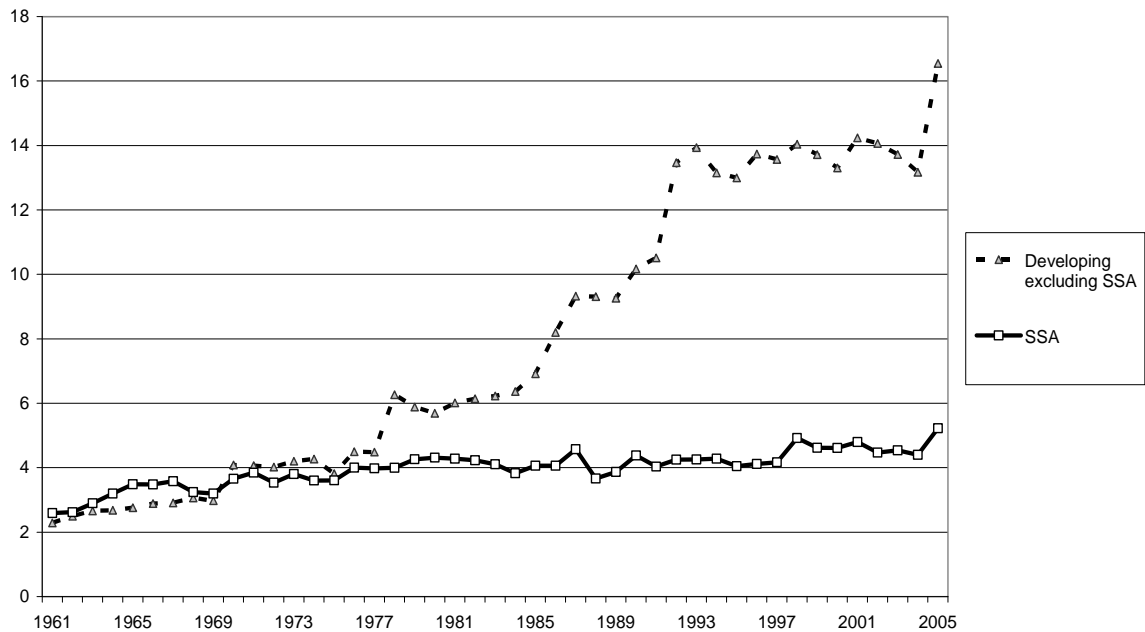
In the last section we explore how ED and ES are related to socioeconomic and human development. We investigate their contribution to explain infant mortality and life expectancy, controlling for the effects of income and also for a large set of other variables.

Our results suggest that the higher the level of ED and ES the lower the infant mortality and the higher the life expectancy in SSA. The estimated coefficients are robust, although overall contribution of these variables is small. Still the estimates suggest that the impact of increasing either ED or ES in improving infant mortality is about one fifth of that of a proportional increase in GDP per capita. Moreover, the results show that the impact is independent of the impact of ED and ES on income per capita. This is an interesting and original finding that is very relevant for the SSA countries, in which GDP, exports or average income growth does not always reflect in real improvements in the life of the majority of the population.

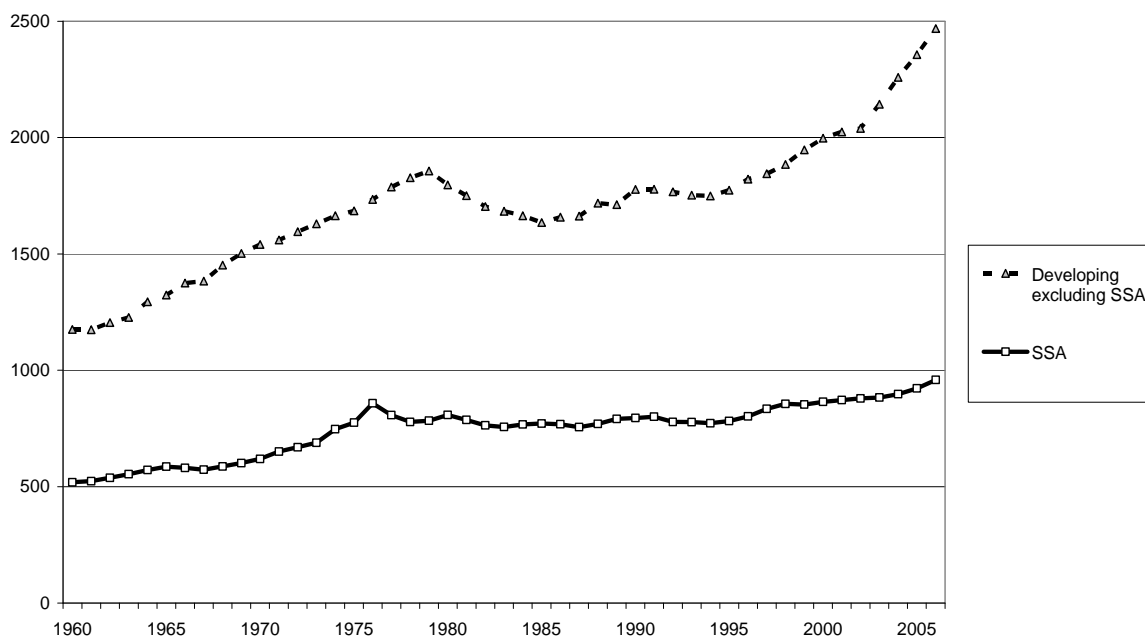
These results suggest that a more diversified or sophisticated integration in world markets may contribute directly for promoting development and improvements in the quality of life and health of the populations, and so may have a different effect in spreading development across regions or social groups of a country that go beyond those of improving the average income.

GRAPHS

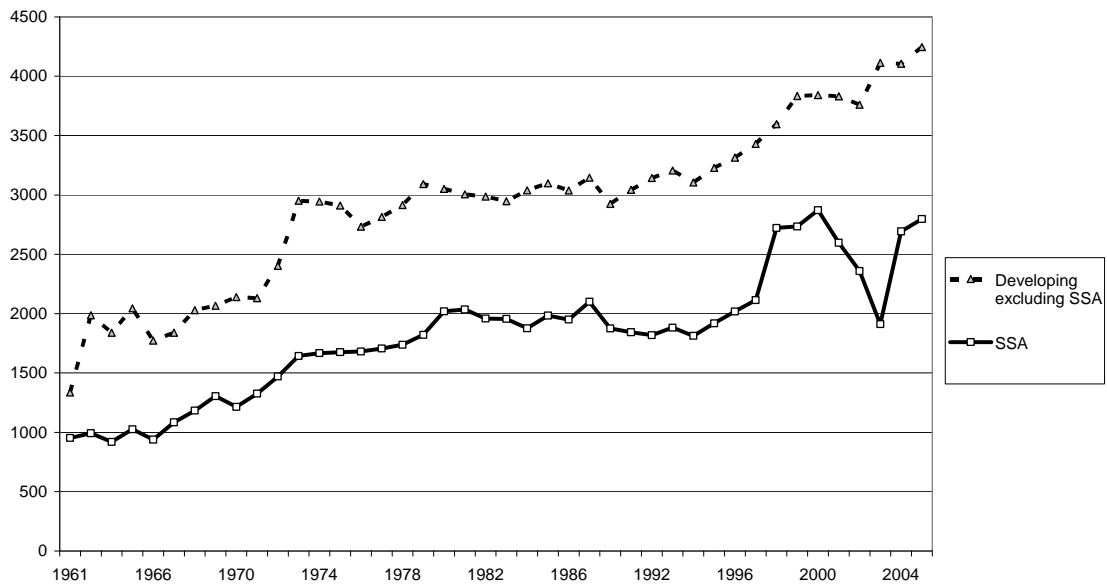
Graph 1. – Evolution of Number Equivalent in SSA and in the MID countries



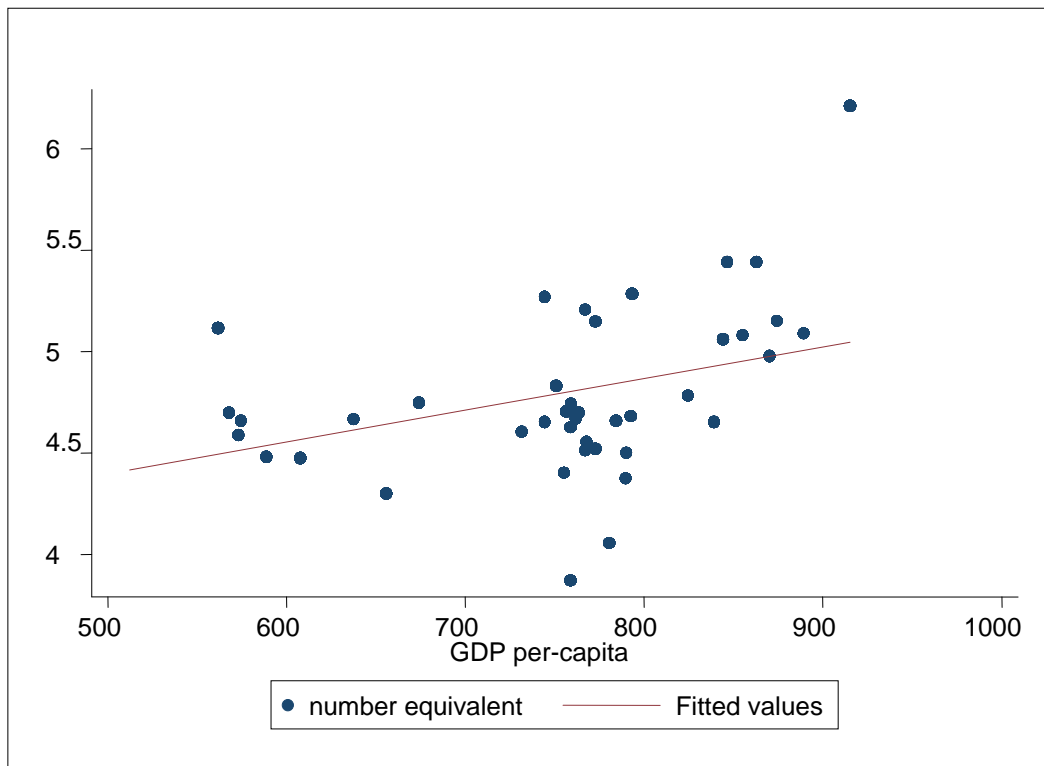
Graph 2 . – Evolution of GDP per capita in SSA and in MID countries



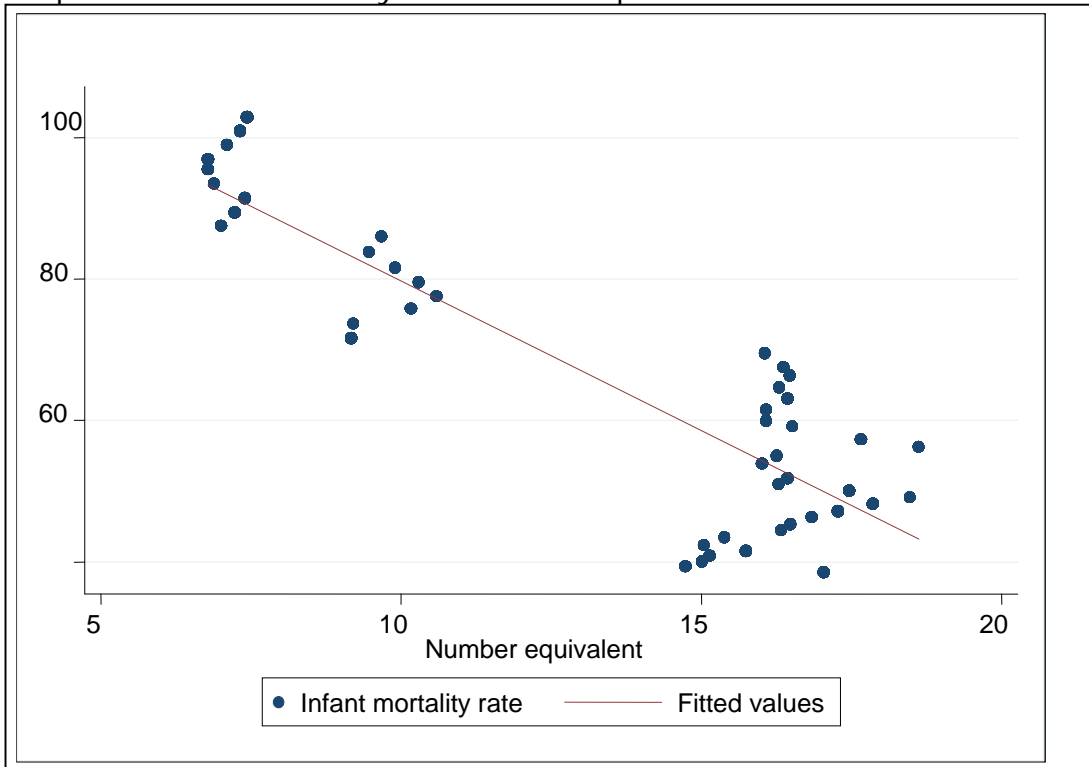
Graph 3. - Evolution of ES (EXPY) in SSA and in MID countries



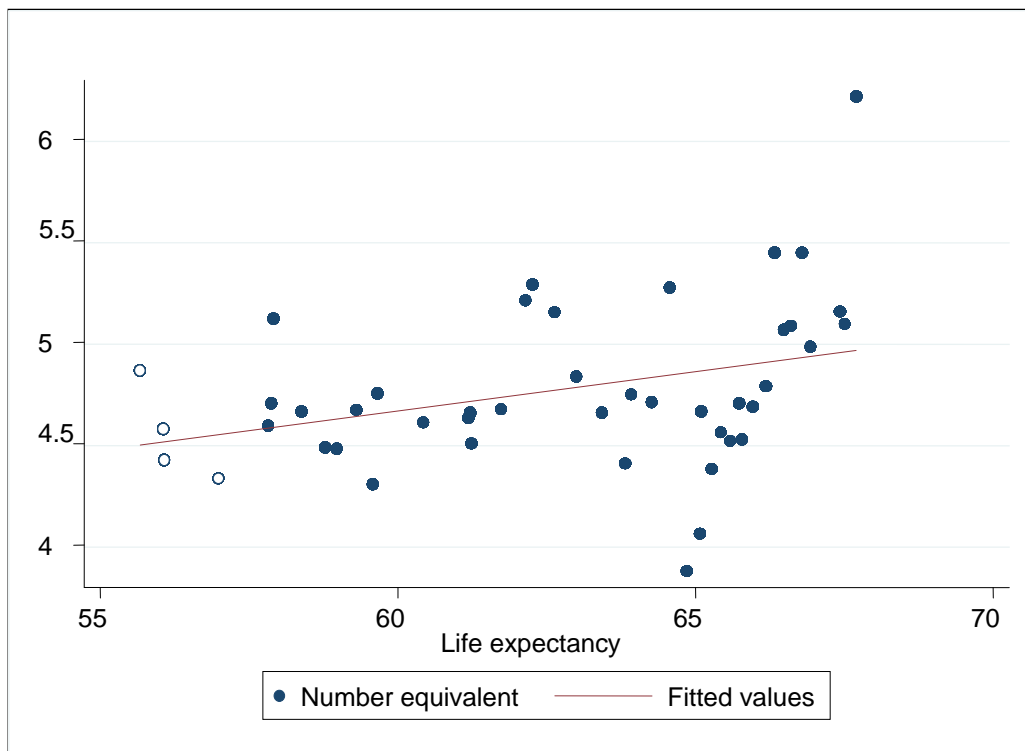
Graph 4. – Number Equivalent (NE) and GDP per capita in SSA



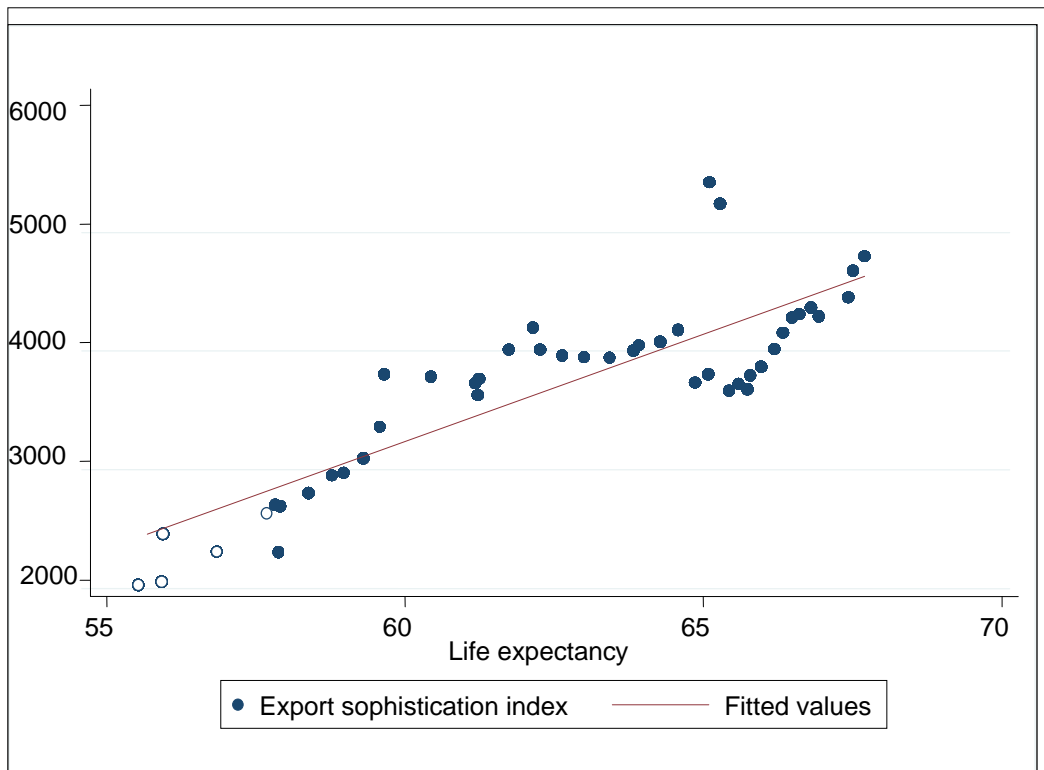
Graph 5. – Infant mortality and number equivalent in SSA countries



Graph 6. – Number Equivalent and life expectancy in SSA



Graph 7. – Export sophistication and life expectancy in SSA



TABLES

TABLE 1 – Export Diversification and Governance

Equation Method VARIABLES	1 RSE ED	2 RSE ED	3 RSE ED	4 RSE ED	5 RSE ED	6 RSE ED	7 RSE ED	8 RSE ED
POP	0.192*** (0.0140)	0.224*** (0.0106)	0.239*** (0.00972)	0.228*** (0.0101)	0.252*** (0.0103)	0.237*** (0.00978)	0.230*** (0.0105)	0.237*** (0.00982)
YPC	0.233*** (0.0220)	0.257*** (0.0182)	0.186*** (0.0190)	0.146*** (0.0212)	0.160*** (0.0208)	0.156*** (0.0229)	0.155*** (0.0232)	0.167*** (0.0225)
LANDLOCKED		-0.429*** (0.0316)	-0.428*** (0.0307)	-0.409*** (0.0303)	-0.409*** (0.0303)	-0.422*** (0.0306)	-0.420*** (0.0307)	-0.426*** (0.0307)
OIL		-0.728*** (0.0412)	-0.574*** (0.0410)	-0.456*** (0.0464)	-0.471*** (0.0487)	-0.496*** (0.0478)	-0.513*** (0.0473)	-0.523*** (0.0492)
LANDPC		-0.0342*** (0.0117)	-0.0339*** (0.0108)	-0.0357*** (0.0105)	-0.0391*** (0.0106)	-0.0384*** (0.0108)	-0.0381*** (0.0109)	-0.0337*** (0.0107)
EDUSPEND			0.565*** (0.0370)	0.570*** (0.0370)	0.580*** (0.0377)	0.549*** (0.0378)	0.554*** (0.0375)	0.561*** (0.0371)
GVA				0.403*** (0.0882)				
GST					0.287*** (0.0737)			
GCORRUPT						0.374*** (0.144)		
GEFFECT							0.297** (0.119)	
GRLAW								0.200* (0.110)
Observations	1680	1679	1589	1589	1589	1589	1589	1589
R-squared	0.171	0.369	0.477	0.484	0.482	0.480	0.479	0.478

TABLE 2 – Determinants of Export Sophistication

VARIABLES	1 ES	2 ES	3 ES	4 ES	5 ES	6 ES	7 ES	8 ES	9 ES	10 ES	11 ES	12 ES	13 ES	14 ES
POP	0.150*** (0.00823)	0.145*** (0.00820)	0.148*** (0.00824)	0.152*** (0.00873)	0.147*** (0.00805)	0.151*** (0.00829)	0.153*** (0.00810)	0.162*** (0.0106)	0.168*** (0.0107)	0.167*** (0.0105)	0.168*** (0.0104)	0.181*** (0.0107)	0.170*** (0.0105)	0.171*** (0.0105)
YPC	0.457*** (0.0135)	0.455*** (0.0140)	0.461*** (0.0145)	0.460*** (0.0138)	0.476*** (0.0145)	0.474*** (0.0155)	0.486*** (0.0138)	0.543*** (0.0297)	0.527*** (0.0300)	0.555*** (0.0295)	0.533*** (0.0300)	0.516*** (0.0294)	0.527*** (0.0296)	0.524*** (0.0296)
LANDLOCK		-0.0135 (0.0314)												
OIL		0.0448 (0.0336)												
LANDPC		-0.0381*** (0.00977)	-0.0352*** (0.00947)	-0.0354*** (0.00942)	-0.0363*** (0.00953)	-0.0357*** (0.00950)	-0.0312*** (0.00964)	-0.0466*** (0.0139)	-0.0441*** (0.0143)	-0.0368*** (0.0142)	-0.0418*** (0.0143)	-0.0174 (0.0143)	-0.0370** (0.0143)	-0.0384*** (0.0144)
GVA			0.0257 (0.0680)											
GST				0.0467 (0.0548)										
GCORRUPT					-0.209** (0.0877)									
GEFFECT						-0.123 (0.0853)								
GRQ							-0.329*** (0.0683)							
GDEBT								0.166*** (0.0372)						
GECON									0.0983** (0.0471)					
GPRES										0.265*** (0.0615)				
GFISP											0.135*** (0.0480)			
GNDR												0.530*** (0.0949)		
GSOCI													0.249*** (0.0892)	
GTRAN														0.176*** (0.0586)
Observations	1686	1685	1685	1685	1685	1685	1685	1402	1402	1402	1402	1402	1402	1402
R-squared	0.357	0.361	0.361	0.361	0.362	0.361	0.368	0.283	0.275	0.283	0.277	0.289	0.277	0.277

TABLE 3 - Export Diversification and Education

VARIABLES	1 ED	2 ED	3 ED	4 ED	5 ED	6 ED	7 ED	8 ES	9 ES	10 ES	11 ES
POP	0.239*** (0.00972)	0.185*** (0.0245)	0.189*** (0.0239)	0.261*** (0.0291)	0.0990*** (0.0365)	0.100*** (0.0349)	0.0722* (0.0368)	0.153*** (0.00813)	0.315*** (0.0218)	0.259*** (0.0199)	0.228*** (0.0212)
YPC	0.186*** (0.0190)	0.360*** (0.0308)	0.411*** (0.0304)	0.455*** (0.0281)	0.537*** (0.0352)	0.560*** (0.0365)	0.549*** (0.0360)	0.482*** (0.0139)	0.457*** (0.0288)	0.332*** (0.0274)	0.340*** (0.0242)
LANDLOCK	-0.428*** (0.0307)	-0.245*** (0.0836)	-0.441*** (0.124)	-1.025*** (0.190)							
OIL	-0.574*** (0.0410)	-1.106*** (0.0810)	-1.049*** (0.0836)	-0.901*** (0.0836)							
LANDPPC	-0.0339*** (0.0108)	0.210*** (0.0226)	0.160*** (0.0210)	0.134*** (0.0183)				-0.0310*** (0.00942)	-0.0221 (0.0185)	0.00535 (0.0175)	-0.0123 (0.0179)
EDUSPEND	0.565*** (0.0370)							0.0147 (0.0323)			
EDUPRIM		0.331*** (0.0653)			0.214*** (0.0479)				-0.0283 (0.0614)		
EDUSEC			0.0319 (0.0463)			0.0702*** (0.0266)				0.128*** (0.0299)	
EDUTER				-0.203*** (0.0624)			0.0863*** (0.0257)				0.123*** (0.0258)
Observations	1589	458	458	458	458	458	458	1595	461	461	461
R-squared	0.477	0.677	0.657	0.663	0.441	0.432	0.435	0.386	0.470	0.499	0.499

TABLE 4 – Export diversification, Growth and Stability (OLS estimates with Robust standard errors)

VARIABLES	1	2	3	4	5	6	7	8	9	10
	GDPG	YPCG	EXPORTG	GDPG	YPCG	EXPORTG	VARGDPG	VARYPCG	VARGDPG	VARYPCG
ED	0.0541** (0.0272)	-0.0990* (0.0547)	0.129*** (0.0488)				-0.462*** (0.0403)	-0.442*** (0.0398)		
ES				0.0747** (0.0299)	0.229*** (0.0518)	0.195*** (0.0486)			-0.318*** (0.0505)	-0.313*** (0.0502)
Constant	1.101*** (0.0456)	0.641*** (0.0816)	-2.894*** (0.0729)	0.618*** (0.220)	-1.192*** (0.386)	-4.176*** (0.370)	3.261*** (0.0604)	3.193*** (0.0602)	5.037*** (0.368)	4.960*** (0.365)
Observations	1590	1066	1641	1593	1069	1643	1729	1729	1734	1734
R-squared	0.002	0.004	0.005	0.004	0.018	0.009	0.054	0.050	0.022	0.022

TABLE 5 – Export diversification, Growth and Stability (Country Fixed effects estimates

)	1	2	3	4	5	6	7	8	9	10
	GDPG	YPCG	EXPORTG	GDPG	YPCG	EXPORTG	VARGDPG	VARYPCG	VARGDPG	VARYPCG
ED	0.0896** (0.0440)	-0.0549 (0.0755)	-0.174 (0.190)				-0.156** (0.0673)	-0.128* (0.0669)		
ES				-0.0493 (0.0387)	-0.00375 (0.0658)	0.327* (0.184)			-0.263*** (0.0583)	-0.258*** (0.0579)
Constant	1.056*** (0.0595)	0.582*** (0.105)	-1.674*** (0.257)	1.537*** (0.287)	0.538 (0.491)	-4.414*** (1.418)	2.872*** (0.0903)	2.794*** (0.0897)	4.625*** (0.434)	4.551*** (0.431)
Observations	1590	1066	395	1593	1069	395	1729	1729	1734	1734
R-squared	0.003	0.001	0.002	0.001	0.000	0.009	0.003	0.002	0.012	0.012
Number of cnumber	47	47	48	47	47	48	47	47	47	47

TABLE 6– Infant mortality and Life expectancy (OLS estimates with Robust standard errors)

VARIABLES	1	2	3	4	5	6	7	8	9	10	11
	MINFANT	MINFANT	MINFANT	MINFANT	MINFANT	MINFANT	MINFANT	MINF5	MINF5	LIFE	LIFE
ED	-0.0772*** (0.0111)		-0.0678*** (0.0114)		0.0139 (0.0190)	-0.0603*** (0.0111)			-0.0805*** (0.0124)		0.0134*** (0.00504)
ES		-0.0920*** (0.0135)	-0.0817*** (0.0134)	-0.0139 (0.0190)			-0.0785*** (0.0123)		-0.0830*** (0.0137)		0.0405*** (0.00569)
YPC	-0.357*** (0.0146)	-0.330*** (0.0159)	-0.328*** (0.0161)	-0.328*** (0.0161)	-0.328*** (0.0161)	-0.311*** (0.0122)	-0.281*** (0.0130)	-0.364*** (0.0135)	-0.331*** (0.0147)	0.0557*** (0.00400)	0.0412*** (0.00435)
EDxES				-0.0678*** (0.0114)	-0.0817*** (0.0134)						
OIL						0.0319 (0.0274)	0.0713*** (0.0271)	0.0168 (0.0298)	0.0653** (0.0296)	0.0129 (0.0102)	0.00134 (0.0101)
LANDLOCK						-0.0204 (0.0182)	0.0162 (0.0163)	-0.0630*** (0.0206)	-0.0142 (0.0183)	-0.0172** (0.00855)	-0.0252*** (0.00770)
EDUSPEND						-0.0589*** (0.0182)	-0.0921*** (0.0179)	-0.122*** (0.0202)	-0.166*** (0.0197)	0.0292*** (0.00708)	0.0382*** (0.00656)
LANDPP						0.200*** (0.0104)	0.179*** (0.0106)	0.248*** (0.0118)	0.223*** (0.0118)	-0.0277*** (0.00443)	-0.0207*** (0.00439)
GCORRUPT						-0.177** (0.0789)	-0.227*** (0.0773)	-0.266*** (0.0872)	-0.330*** (0.0858)	0.213*** (0.0345)	0.226*** (0.0336)
Observations	1627	1633	1627	1627	1627	1536	1542	1536	1542	1589	1595
R-squared	0.480	0.480	0.490	0.490	0.490	0.636	0.639	0.678	0.678	0.356	0.380

TABLE 7 – Infant mortality and Life expectancy (Country Fixed effects estimates)

Fixed Effects VARIABLES	1 FE MINFANT	2 FE MINFANT	3 FE MINFANT	4 FE MINFANT	5 FE MINF5	6 FE MINF5	7 FE LIFE	8 FE LIFE
ED	-0.0483*** (0.0106)		-0.0161* (0.00953)		-0.0648*** (0.0118)		0.0114** (0.00514)	
ES		-0.176*** (0.00821)	-0.174*** (0.00834)			-0.196*** (0.00912)		0.0654*** (0.00417)
YPC	-0.141*** (0.0174)	-0.119*** (0.0154)	-0.113*** (0.0155)	-0.108*** (0.0161)	-0.156*** (0.0193)	-0.133*** (0.0172)	0.0340*** (0.00843)	0.0188** (0.00788)
EDxES				-0.104*** (0.00598)				
Observations	1627	1633	1627	1627	1627	1633	1680	1686
R-squared	0.058	0.261	0.262	0.199	0.064	0.263	0.014	0.140
N° Countries	45	45	45	45	45	45	45	45

Table 8 – Pagan and Hall heteroskedasticity test

	INFANTM		LIFE	
	ED	ES	ED	ES
Pagan Statistics	114.037	140.695	43.333	44-902
P-value	0.000	0.0000	0.0000	0.000

TABLE 9 – IV ESTIMATES AND TESTS

	INFANTM		LIFE	
	ED	ES	ED	ES
IV estimates	-0.0563 (0.0303)	-0.1306 (0.0646)	0.0221 (.02108)	0.0675 (0.0327)
Included Instruments	YPC LANDPP EDUSPEND OIL GCORRUPTED			
Excluded instruments	Landlocked, LAGED5 , POP		Landlocked, LAGES5 , POP	
ENDOGENITY TESTS				
GMM Statistics	C 0.755	4.902	0.252	2.670
Chi square P-value	0.3848	0.0268	0.6155	0.102
OVERIDENTIFICATION RESTRICTIONS				
Hansen statistic	J 0.051	0.229	3.266	1.959
Chi square P-value	0.9747	0.8919	0.1954	0.3756
RELEVANCE OF INSTRUMENTS				
Partial R2	0.589	0.301	0.589	0.301
F-test (pvalue)	0-000	0.000	0.000	0.000

Table A.1 Export Diversification : Institutional and Political Variables (OLS estimates with robust standard errors)

VARIABLES	1 ED	2 ED	3 ED	4 ED	5 ED	6 ED	7 ED	8 ED	9 ED	10 ED	11 ED	12 ED	13 ED
POP	0.235*** (0.0115)	0.183*** (0.0126)	0.226*** (0.0137)	0.204*** (0.0124)	0.174*** (0.0133)	0.187*** (0.0138)	0.157*** (0.0162)	0.139*** (0.0172)	0.163*** (0.0167)	0.167*** (0.0169)	0.136*** (0.0165)	0.165*** (0.0169)	0.137*** (0.0156)
YPC	0.169*** (0.0200)	0.160*** (0.0209)	0.198*** (0.0217)	0.144*** (0.0211)	0.136*** (0.0227)	0.202*** (0.0230)	0.186*** (0.0350)	0.189*** (0.0320)	0.160*** (0.0362)	0.149*** (0.0363)	0.119*** (0.0328)	0.140*** (0.0389)	0.159*** (0.0325)
EDUSPEND	0.711*** (0.0387)												
GVA		1.005*** (0.0803)											
GST			0.536*** (0.0611)										
GCORRUPT				1.378*** (0.125)									
GEFFECT					1.056*** (0.106)								
GREGQUAL a)						0.411*** (0.0943)							
GHRES a)							0.297*** (0.0940)						
GBREG a)								0.730*** (0.105)					
GDEBT a)									-0.0486 (0.0420)				
GECON a)										-0.152*** (0.0580)			
GREVN a)											0.994*** (0.0985)		
GPRES a)												-0.175** (0.0696)	
GFINS a)													0.988*** (0.119)
Observations	1590	1680	1680	1680	1680	1680	1398	1398	1398	1398	1398	1398	1398
R-squared	0.341	0.239	0.203	0.236	0.218	0.181	0.119	0.148	0.113	0.116	0.169	0.116	0.157

a) Non robust when other control variables of the basic model were included

Table A.1 Export Diversification : Institutional and Political Variables (OLS estimates with robust standard errors) (continuation)

VARIABLES	14 ED	15 ED	16 ED	17 ED	18 ED	19 ED	20 ED	21 ED	22 ED	123 ED	24 ED	25 ED	26 ED
POP	0.169*** (0.0167)	0.166*** (0.0162)	0.166*** (0.0170)	0.156*** (0.0164)	0.143*** (0.0169)	0.163*** (0.0160)	0.147*** (0.0161)	0.153*** (0.0179)	0.151*** (0.0160)	0.159*** (0.0169)	0.147*** (0.0162)	0.163*** (0.0164)	0.158*** (0.0164)
YPC	0.131*** (0.0369)	0.178*** (0.0345)	0.157*** (0.0354)	0.185*** (0.0350)	0.152*** (0.0341)	0.210*** (0.0344)	0.190*** (0.0335)	0.173*** (0.0347)	0.200*** (0.0340)	0.172*** (0.0359)	0.186*** (0.0324)	0.180*** (0.0343)	0.179*** (0.0352)
GFISP a)	-0.263*** (0.0584)												
GNDR a)		0.569*** (0.0992)											
GMACR a)			-0.125** (0.0606)										
GSOCI a)				0.286*** (0.108)									
GENVR					0.702*** (0.109)								
GPROP a)						0.337*** (0.0801)							
GPUBS a)							0.625*** (0.100)						
GFINQ a)								0.141* (0.0763)					
GPADM a)									0.574*** (0.0934)				
GPROT a)										0.0445 (0.109)			
GSTRC a)											0.947*** (0.133)		
GTRAD a)												0.359*** (0.0974)	
GTRAN a)													0.172** (0.0781)
Observations	1398	1398	1398	1398	1398	1398	1398	1398	1398	1398	1398	1398	1398
R-squared	0.124	0.130	0.115	0.117	0.137	0.129	0.137	0.114	0.135	0.112	0.151	0.122	0.116

a) Non robust when other control variables of the basic model were included

Table B - Variables and Sources

VARIABLES	DESCRIPTION	SOURCE
GDP	GDP (constant 2000 US\$)	World Bank
YPC	GDP per capita (constant 2000 US\$)	World Bank
YPCGROWTH	GDP per capita growth (annual %)	World Bank
POPDENS	Population density (people per sq. km)	World Bank
POP	Population, total	World Bank
EDUPRIM	Labor force with at least primary education (% of total)	World Bank
EDUSEC	Labor force with at least secondary education (% of total)	World Bank
EDUTERC	Labor force with tertiary education (% of total)	World Bank
LIFE	Life expectancy at birth, total (years)	World Bank
MINFANT	Mortality rate, infant (per 1,000 live births)	World Bank
MINF5	Mortality rate, under-5 (per 1,000)	World Bank
EDUSPEND	Public spending on education, total (% of GDP)	World Bank
LANDPC	Arable land (hectares per person)	World Bank
LANDTOT	Arable land (hectares)	World Bank
LANDLOCKED	Landlocked (dummy)	UN
HERF1	Herfindahl Index (1 digit SITC rev2)	OECD
HERF2	Herfindahl Index (2 digit)	OECD
HERF3	Herfindahl Index (3 digit)	OECD
HERF4	Herfindahl Index (4 digit)	OECD
HERF5	Herfindahl Index (5 digit)	OECD
ED	Number Equivalent, based on the Herfindahl index (at 5 digit)	OECD
THEIL1	Índice de Theil (1 digit, SITC Revision 2)	OECD
THEIL2	Índice de Theil (2 digit, SITC Revision 2)	OECD
THEIL3	Índice de Theil (3 digit, SITC Revision 2)	OECD
THEIL4	Índice de Theil (4 digit, SITC Revision 2)	OECD
THEIL5	Índice de Theil (5 digit, SITC Revision 2)	OECD
DIST	Minimum distance to EU, USA or Japan	CEPII
GVA	Voice and Accountability	World Bank
GST	Political Stability No violence	World Bank
GEFFECT	Government Effectiveness	World Bank
GRQ	Regulatory Quality	World Bank
GRLAW	Rule of Law	World Bank
GCORRUPT	Control of Corruption	World Bank
EXPORTGROWTH	Total Exports (Growth Rates)	World Bank
EXPY1	EXPY (1 digit, SITC Revision 2)	OECD
EXPY2	EXPY (2 digit, SITC Revision 2)	OECD
EXPY3	EXPY (3 digit, SITC Revision 2)	OECD
EXPY4	EXPY (4 digit, SITC Revision 2)	OECD
EXPY	EXPY (5 digit, SITC Revision 2)	OECD
OIL	Dummy equal to 1 for oil net exporting countries	UN
SADC	Dummy for the SADC countries	UN
ECOWAS	Dummy for the ECOWAS countries	UN
SSA	Dummy for the ECOWAS countries	UN

UN - United Nations.

Table B – (continuation)

VARIABLES	DESCRIPTION	SOURCE
GVA	Voice and Accountability	World Bank
GST	Political Stability No violence	World Bank
GEFFECT	Government Effectiveness	World Bank
GRQ	Regulatory Quality	World Bank
GRLAW	Rule of Law	World Bank
GCORRUPT	Control of Corruption	World Bank
GHRES	Building human resources	World Bank
GBREG	Business regulatory environment	World Bank
GDEBT	Debt policy rating	World Bank
GECON	Economic management cluster average	World Bank
GREVN	Efficiency of revenue mobilization	World Bank
GPRES	Equity of public resource use rating	World Bank
GFINS	Financial sector rating	World Bank
GFISP	Fiscal policy rating	World Bank
GNDR	Gender equality rating	World Bank
GMACR	Macroeconomic management rating	World Bank
GSOCI	Policies for social inclusion/equity cluster average	World Bank
GENVR	Policy and institutions for environmental sustainability	World Bank
GPROP	Property rights and rule-based governance rating	World Bank
G PUBS	Public sector management and institutions cluster average	World Bank
GFINQ	Quality of budgetary and financial management rating	World Bank
G PADM	Quality of public administration rating	World Bank
GPROT	Social protection rating	World Bank
GSTRC	Structural policies cluster average	World Bank
GTRAD	Trade rating	World Bank
GTRAN	Transparency, accountability, and corruption in the public sector	World Bank

UN - United Nations.

REFERENCES

- Acemoglu, D. and Zilibotti, F. (1997). "Was Prometheus unbound by chance? Risk, diversification and growth". *Journal of Political Economy*, 105(4): 709-751.
- Ali, R., Alwang, J. and Siegel, P. (1991). "Is export diversification the best way to achieve export growth and stability? A look at three African countries". *Policy Research Working Paper Series*, No 729, Washington, DC.
- Al-marhubi, F. (2000). "Export diversification and growth: an empirical investigation". *Applied economics letters*, 7(9): 559–562.
- Amiti, M. and Venables, A. (2002). The geography of intra-industry trade. [in:] P. J. Lloyd and H.-H. Lee (Eds.) *Frontiers of Research in intra-industry trade*. Palgrave Macmillan, Basingstoke.
- Baum, C., Schaffer, M. and Stillman, S. (2007). "ivreg2: Stata module for extended instrumental variables/2SLS, GMM and AC/HAC, LIML and k-class regression". Available at <http://ideas.repec.org/c/boc/bocode/s425401.html>.
- Brenton, P. and Newfarmer, R. (2009). Watching more than the Discovery Channel to diversify exports". [in:] Richard S. Newfarmer, William Shaw and Peter Walkenhorst (Eds), *Breaking into New Markets: Emerging Lessons for Export Diversification*, pp. 111–124. Washington, DC: The World Bank.
- Cadot, O., Carrère, C. and Strauss-Kahn, V. (2007). "Export diversification: what's behind the hump?". *Centre for Economic Policy Research Discussion Paper*, No. 6590.
- Costas, A., Demidova, S., Klenow, P. and Rodriguez-Clare, A. (2008). "Endogenous variety and the gains from trade". *American Economic Review Papers and Proceedings*, 98(2): 444–450.
- Dawe, D. (1996). "A new look at the effects of export instability on investment and growth". *World development*, 24(12): 1905–1914.
- De Benedictis, L., Gallegati, M. and Tambari, M. (2009). "Overall specialisation and development: countries diversify". *The Review of World Economics (Weltwirtschaftliches Archiv)*, 145(1): 37–55.
- Dixit, A. and Norman, V. (1980). *Theory of International Trade: a dual, general equilibrium approach*. Cambridge University Press, Cambridge.
- Feenstra, R., Madani, D., Yang, T. and Liang, C. (1999). "Testing endogenous growth in South Korea and Taiwan", *Journal of Development Economics*, 60(2): 317–341.

Feenstra, R. and Kee, H. (2008). "Export variety and country productivity: estimating the monopolistic competition model with endogenous productivity," *Journal of International Economics*, 74(2):500–518.

Forslid, R., Haaland, J. and Midelfahrt, K. (2002). "A U shaped Europe? A simulation study of industrial location". *Journal of International Economics*, 57(2): 273-297.

Frankel, J. and Romer, D. (1999). "Does trade cause growth?". *American Economic Review* 89 (3), 379–399.

Funke, M., and Ruhwedel R. (2005). "Export variety and economic growth in East European transition economies". *Economics of Transition*, 13 (1): 25–50.

Gullstrand, J. (2000). *Country-Specific Determinants of Vertical Intra-Industry Trade With Application to Trade Between Poland and EU*, [in:] B. Wawrzynjak (Ed.), *Globalisation and Change – Ways to Future*, Leon Kozminski Academy of Entrepreneurship and Management, Warsaw.

Harrigan, J. and Zakrajsek, E. (2000). "Factor supplies and specialization in the world economy". *NBER Working Paper No. 7848*, Cambridge (Mass.).

Hausmann R., Hwang, J. and Rodrik, D. (2007). "What you export matters". *Journal of Economic Growth*, 12(1): 1–25.

Hausmann, R. and Klinger, B. (2006). 'South Africa's export predicament'. *CID Working Paper, No 129*. Cambridge, MA: Center for International Development, Harvard University.

Hausmann, R. and Rodrik, D. (2006). "Doomed to choose: industrial policy as predicament". Paper presented at the first Blue Sky seminar, 9 September. Cambridge, MA: Center for International Development, Harvard University.

Helpman, E. and Krugman, P. (1985). *Market structure and foreign trade*. The MIT Press, Cambridge (Mass).

Herzer, D. and Nowak-Lehmann, F. (2006). "What does export diversification do for growth? An Econometric Analysis". *Applied Economics*, Vol. 38 (15), S. 1825–1838.

Hummels, D. and Klenow, P. (2005). "The variety and quality of a nation's exports". *The American Economic Review* 95(3): 704-723.

Imbs, J. and Wacziarg, R. (2003). "Stages of diversification," *American Economic Review*, 93(1): 63–86.

Kalemli-Ozcan, S., Sørensen, B., and Yosha, O. (2003). "Risk sharing and industrial specialisation: regional and international evidence". *American Economic Review*, 93(3): 903–918.

Koren, M. and Tenreyro, S. (2007). "Volatility and development," *The Quarterly Journal of Economics*, 122(1): 243-287, 02.

Klinger, B. and Daniel L. (2004). Discovery and development: An empirical exploration of new products. *World Bank Policy Research Working Paper* No. 3450, Washington, DC.

Klinger, B. and Daniel L. (2006). "Diversification, innovation, and imitation inside the global technological frontier." *World Bank Policy Research Working Paper*, No 3872, Washington, DC.

Krugman, P. and Venables, A. (1990). Integration and the competitiveness of peripheral industry. [in:] Bliss C. and J. Braga de Macedo (Eds.). *Unity with diversity in the European economy: the Community's southern frontier*. Cambridge University Press, Cambridge.

Krugman, P. (1981). Intraindustry specialisation and the gains from trade. *The Journal of Political Economy*, 89(5): 959–973.

Krugman, P. and Venables, A. (1995). "The Seamless World: A spatial model of international specialization," *NBER Working Papers*, No 5220, National Bureau of Economic Research, Inc

Levine, D. and Rothman, D. (2006). Does trade affect child health?, *Journal of Health Economics*, 25: 538–554.

Limão, N. and Venables, A. (2001). "Infrastructure, geographical distance, transport costs and trade". *World Bank economic review*, 15(3): 451–479.

Matthee, M. and Naudé, W. (2008). "Export diversity and regional growth in a developing country context: empirical evidence, Paper submitted to the Regional Studies Association International Conference: "Regions: The dilemmas of integration and competition", Prague, 27–29 May 2008.

Naude, W. and Rossouw, R. (2008). "Export diversification and specialization in South Africa: extent and impact," *Working Papers* RP2008/93, World Institute for Development Economic Research (UNU-WIDER).

Owen, A. and Wu, S. (2007). "Is trade good for your health?". *Review of International Economics*, 15 (4): 660–682.

Parteka, A. and Tamberi M., (2008). "Determinants of export diversification: an empirical investigation". *Quaderno di Ricerca (WorkingPaper)*, No. 327, Politecnica delle Marche, Dipartimento di Economia Università

Parteka, A. (2007). Employment and export specialisation patterns versus GDP *per capita* performance: unifying approach. *Quaderno di Ricerca (WorkingPaper)*, No 302, Università Politecnica delle Marche, Dipartimento di Economia Università'

Piñeres, S. and Ferrantino, M. (1997). "Export diversification and structural dynamics in the growth process: A case study of Chile." *Journal of Development Economics*, 52, 375–391.

Radelet, S. and Sachs, J. (1998). "Shipping Costs, Manufactured Exports, and Economic Growth." Draft paper presented at the American Economic Association meetings, (January).

Rodrik, D., Subramanian, A. and Trebbi, F. (2004). "Institutions rule: the primacy of institutions over geography and integration in economic growth". *Journal of Economic Growth*, 9 (13):131–165.

Schott, P. (2004). "Across-Product versus within-product specialization in international trade". *Quarterly Journal of Economics*, 119(2): 646 – 677

Venables, A. and Limão, N. (2002). "Geographical disadvantage: a Heckscher-Ohlin-von Thünen model of international specialisation". *Journal of International Economics*, 58(2): 239–263.