



Salvia fruticosa, Salvia officinalis and rosmarinic acid induce apoptosis and inhibit proliferation of Human Colorectal cell lines: the role in MAPK/ERK pathway

Journal:	<i>Nutrition and Cancer: An International Journal</i>
Manuscript ID:	N&C-08-08-0351.R1
Manuscript Type:	Original Article
Date Submitted by the Author:	n/a
Complete List of Authors:	Xavier, Cristina; University of Minho, Department of Biology Lima, Cristovao; University of Minho, Department of Biology Fernandes-Ferreira, Manuel; University of Minho, Department of Biology Pereira-Wilson, Cristina; University of Minho, Department of Biology
Keywords:	Colorectal cancer, Cell signaling, Apoptosis, Herbs



1
2
3 **Title**
4
5
6
7
8
9

10 ***Salvia fruticosa*, *Salvia officinalis* and rosmarinic acid induce apoptosis and inhibit**
11 **proliferation of Human Colorectal cell lines: the role in MAPK/ERK pathway**
12
13
14
15
16
17
18
19
20
21
22
23
24
25
26
27

28 Cristina P.R. Xavier¹, Cristovao F. Lima¹, Manuel Fernandes-Ferreira² and Cristina
29 Pereira-Wilson¹
30
31

32
33 ¹*CBMA – Molecular and Environmental Biology Centre/Department of Biology,*
34 *University of Minho, 4710-057 Braga, Portugal*

35 ²*CMPBP – Centre of Molecular Physiology and Biotechnology of Plants/Department of*
36 *Biology, University of Minho, 4710-057 Braga, Portugal*
37
38
39
40
41
42
43
44
45
46
47
48
49
50
51
52
53
54
55
56
57
58
59
60

1 ABSTRACT

2 Epidemiologic studies have shown that nutrition is a key factor in modulating
3 sporadic colorectal carcinoma (CRC) risk. Aromatic plants of the genus *Salvia* (sage)
4 have been attributed many medicinal properties, which include anticancer activity. In
5 the present study, the antiproliferative and pro-apoptotic effects of water extracts of
6 *Salvia fruticosa* (SF) and *Salvia officinalis* (SO) and of their main phenolic compound
7 rosmarinic acid (RA) were evaluated in two human colon carcinoma-derived cell lines,
8 HCT15 and CO115, which have different mutations in the MAPK/ERK and PI3K/Akt
9 signalling pathways. These pathways are commonly altered in CRC leading to increased
10 proliferation and inhibition of apoptosis. Our results show that SF, SO and RA induce
11 apoptosis in both cell lines, whereas cell proliferation was inhibited by the two sage
12 extracts only in HCT15. SO, SF and RA inhibited ERK phosphorylation in HCT15 and
13 had no effects on Akt phosphorylation in CO115 cells. The activity of sage extracts
14 seems to be due, at least in part, to the inhibition of MAPK/ERK pathway.

16 Introduction

17 Cancer is an important health problem and one of the most common forms is
18 colorectal carcinoma (CRC). Phosphatidylinositol 3-kinase (PI3K)/Akt and mitogen-
19 activated protein kinase/extracellular signal-regulated kinase (MAPK/ERK) signalling
20 pathways play critical roles in cell proliferation and survival and are frequently
21 activated in CRC (1-3). Deregulation of these pathways is also thought to determine
22 response to treatment (4). Mutations of KRAS and BRAF in sporadic CRC [70-80% of
23 total cases (5)] are alternative, where the former constitutively activates both
24 MAPK/ERK and PI3K/Akt pathways and the latter activates MAPK/ERK pathway (3,
25 4, 6-8). As presented by Schubbert *et al.* (9), mutations in CRC of either KRAS or

1
2
3 26 BRAF genes occur in 32% and 14% of cases, respectively. Studies have also shown that
4
5 27 CRC is frequently associated with mutations in genes that encode for PI3K, PI3KCA,
6
7 28 and PTEN (an endogenous inhibitor of PI3K activity), resulting in an overexpression of
8
9 29 Akt (10-13). Considering the high incidence of CRC, inhibitors of these pathways are
10
11 30 actively being searched for use in the control of cancer progression (14-16).
12
13
14

15 31 Epidemiologic studies have shown that western type diets, poor in vegetables
16
17 32 and fruits, are risk factors known associated with CRC, suggesting that nutritional
18
19 33 factors may also be preventive and also helpful in the control of cancer (17-19). In fact
20
21 34 green and black tea consumption has been shown to be effective in the initiation,
22
23 35 promotion and progression stages of carcinogenesis, although effects on colon cancer
24
25 36 are inconclusive (20). Plants of the genus *Salvia* (sage) such as *Salvia miltiorrhiza* and
26
27 37 *Salvia menthaefolia* have also been suggested to have anticancer properties based on
28
29 38 antiproliferative activity on tumor cells (21, 22). In addition, reactive oxygen species
30
31 39 (ROS) have been reported to play a role in signalling transduction enhancing
32
33 40 proliferation and survival of cancer cells. Antioxidant phytochemicals through their
34
35 41 ROS scavenging activity, may suppress altered redox-sensitive signalling events in
36
37 42 cancer (23, 24).
38
39
40
41
42

43 43 *Salvia fruticosa* (SF) and *Salvia officinalis* (SO), poorly studied with regard to
44
45 44 their anticancer activity, are mediterranean medicinal and aromatic plants which contain
46
47 45 rosmarinic acid (RA; Fig. 1) as major phenolic compound in their water extracts. RA
48
49 46 constitutes about 58% of all phenolic compounds present in SF water extract and 70%
50
51 47 in SO water extract (25, 26). This phenolic compound has high antioxidant and anti-
52
53 48 inflammatory activities (22, 27), but little is known about its effects on cancer cells and
54
55 49 especially on CRC.
56
57
58
59
60

1
2
3 50 In the present study, we report on the antiproliferative and pro-apoptotic effects
4
5 51 of two *Salvia* water extracts, SF and SO, and their major phenolic compound, RA, in
6
7 52 two human colon cancer-derived cell lines, HCT15 and CO115, through effects on the
8
9 53 MAPK/ERK and PI3K/Akt pathways and caspase mediated apoptosis. These two cell
10
11 54 lines possess different activating mutations in these two pathways: HCT15 has a KRAS
12
13 55 (G13D) mutation (28) whereas CO115 has a BRAF (V599E) mutation (29).
14
15

16
17 56 In view of these genetic differences we further speculate on the mechanisms
18
19 57 behind the antiproliferative and pro-apoptotic effects of sage extracts and RA and the
20
21 58 involvement of PI3K/Akt and MAPK/ERK signalling pathways in these effects.
22
23
24
25

26 27 60 **Material and Methods**

28 29 30 31 62 **Reagents and Plant Extracts**

32
33
34 63 All reagents and chemicals used were of analytical grade. Wortmannin (W),
35
36 64 rosmarinic acid (RA) and staurosporine were purchased from Sigma-Aldrich (St. Louis,
37
38 65 MO, USA) and PD-98059 (PD) was from Calbiochem (San Diego, CA, USA). The
39
40 66 primary antibodies anti-phospho-Akt (Ser473), anti-Akt total, anti-phospho-PTEN
41
42 67 (Ser380/Thr382/383), anti-PTEN total, anti-p44/42 MAPK total and anti-cleaved
43
44 68 caspase-9 (Asp315) were purchased from Cell Signaling (Danvers, MA, USA), the anti-
45
46 69 phospho-ERK and caspase-3 (H-277) were from Santa Cruz Biotechnology, Inc. (Santa
47
48 70 Cruz, CA, USA) and the anti- β -actin from Sigma-Aldrich. The secondary antibodies
49
50 71 HRP donkey anti-rabbit and sheep anti-mouse were from GE Healthcare (Bucks, UK).
51
52
53 72 The water extracts of *Salvia fruticosa* and *Salvia officinalis* were prepared as
54
55 73 previously described by Lima *et al.* (30), by pouring boiling water onto the dried plant
56
57 74 material (at ratio of 150ml of water to each 2g of plant) and allowing to steep for 5min.
58
59
60

1
2
3 75 After filtering, the water extract was lyophilized to dryness. The extracts of both sages
4
5 76 were made using batches of the plants which composition, in terms of phenolics
6
7
8 77 compounds, have already been published (25, 26). In brief, SF water extract contain as
9
10 78 major phenolic compound rosmarinic acid (RA; 71.5µg/ml), 6-hydroxyluteolin-7-
11
12 79 glucoside (22.7µg/ml), a not identified flavone heteroside (28.6µg/ml) and the
13
14
15 80 remaining phenolic compounds representing 0.8µg/ml. SO water extract contain as
16
17 81 major phenolic compounds RA (52.0µg/ml), luteolin-7-glucoside (19.7µg/ml) and the
18
19 82 remaining phenolic compounds representing 2.7µg/ml.
20
21

22 83 Stocks solutions of PD and W were made in dimethyl sulfoxide (DMSO) and
23
24 84 aliquots were kept at -20°C. Therefore, DMSO (0.5%) was included in cell culture for
25
26 85 the other conditions (controls and extracts/RA) to exclude any possible DMSO effect.
27
28
29 86

30 31 87 **Cell culture**

32
33 88 HCT15 and CO115 human colon carcinoma-derived cell lines were a gift from
34
35 89 Dr. Raquel Seruca (IPATIMUP, University of Porto, Portugal) and were maintained in
36
37 90 culture at 37°C in a humidified 5% CO₂ atmosphere in RPMI-1640 medium (Sigma-
38
39 91 Aldrich) supplemented with 10mM HEPES, 0.1mM pyruvate, 1% antibiotic-
40
41 92 antimycotic solution (Sigma-Aldrich) and 10% fetal bovine serum (FBS; EU standard,
42
43 93 Cambrex, Verviers, Belgium). Cells were seeded onto six well plates at a density of
44
45 94 0.75 x10⁵ (HCT15) and 1.0 x10⁵ (CO115) cells/well. Incubations with different
46
47 95 concentrations of sage extracts and RA were performed in serum free medium for 48h
48
49 96 to analyze BrdU incorporation and TUNEL positive cells, and for 24h for western blot
50
51 97 analysis.
52
53
54
55
56
57
58
59
60

99 **Assessment of proliferation by BrdU incorporation**

1
2
3 100 Preliminary experiments using the MTT assay were performed in order to
4
5
6 101 choose concentrations of SF and SO extracts that inhibited around 50% cell
7
8 102 proliferation without cytotoxic effects. RA was tested in similar concentrations to the
9
10 103 ones found in the extracts at the concentrations used and also did not induce cytotoxic
11
12 104 effect. After 45h of treatment with sage extracts or RA at different concentrations,
13
14 105 bromodeoxyuridine (BrdU; Sigma-Aldrich) was added to the culture medium in order to
15
16 106 give a final concentration of 10 μ M, and then incubated for another 3h. Both adherent
17
18 107 and non-adherent cells were collected from each sample, fixed with 4%
19
20 108 paraformaldehyde for 15min at room temperature and then attached into a polylysine
21
22 109 treated slide using a Shandon Cytospin (Thermo Fisher Scientific Inc, Waltham MA,
23
24 110 USA). Cells were incubated with HCl 2M for 20min, washed in PBS containing 0.5%
25
26 111 Tween-20 and 0.05% BSA (TPBS-B) and then incubated with monoclonal mouse anti-
27
28 112 BrdU antibody (DakoCytomation, Glostrup, Denmark) for 1h at room temperature.
29
30 113 After washing in TPBS-B, cells were incubated with anti-mouse IgG FITC-conjugated
31
32 114 secondary antibody (Sigma-Aldrich) for 1h at room temperature, washed again and then
33
34 115 incubated with Hoechst for nuclei staining. The percentage of proliferating cells was
35
36 116 calculated as the ratio between BrdU positive cells and total number of cells (nuclei
37
38 117 staining with Hoechst), from a count higher than 500 cells per slide under a fluorescent
39
40 118 microscope. Results are presented as mean \pm SEM of at least three independent
41
42 119 experiments.
43
44
45
46
47
48
49

120

121 **Assessment of apoptosis by TUNEL assay**

122 Cells treated as above for 48 h were collected (both floating and attached cells)
123 and fixed with 4% paraformaldehyde for 15min at room temperature and then attached
124 into a polylysine treated slide using a Shandon Cytospin. Cells were washed in PBS and

1
2
3 125 permeabilized with 0.1% Triton X-100 in 0.1% sodium citrate for 2min on ice. TUNEL
4
5 126 (TdT mediated dUTP Nick End Labelling) assay was performed using a kit from Roche
6
7 127 (Mannheim, Germany), following the manufacture's instructions. Cells were incubated
8
9
10 128 with Hoechst for nuclei staining. The percentage of apoptotic cells was calculated from
11
12 129 the ratio between TUNEL positive cells and total number of cells (nuclei staining with
13
14 130 Hoechst), from a count higher than 500 cells per slide under a fluorescent microscope.
15
16
17 131 Results are presented as mean \pm SEM of at least three independent experiments.
18
19
20 132

21 22 133 **Protein extraction and western blotting**

23
24 134 After 24h of treatment with sage extracts or RA at the highest concentration used
25
26 135 in the BrdU and TUNEL assay, cells were washed with PBS and lysed for 15min at 4°C
27
28 136 with ice cold RIPA buffer (1% NP-40 in 150mM NaCl, 50mM Tris (pH 7.5), 2mM
29
30 137 EDTA), supplemented with 20mM NaF, 1mM phenylmethylsulfonyl fluoride (PMSF),
31
32 138 20mM Na₂V₃O₄ and protease inhibitor cocktail (Roche). Protein concentration was
33
34 139 quantified using a Bio-Rad DC protein assay (Bio-Rad Laboratories, Inc., Hercules,
35
36 140 CA, USA) and BSA as a protein standard. Twenty micrograms of protein for each
37
38 141 sample were separated by SDS gel electrophoresis and then electroblotted to a Hybond-
39
40 142 P polyvinylidene difluoride membrane (GE Healthcare). Membranes were blocked in
41
42 143 TPBS (PBS with 0.05% Tween-20) containing 5% (w/v) non-fat dry milk or BSA,
43
44 144 incubated with the primary antibody and followed by the secondary antibody
45
46 145 conjugated with IgG horseradish peroxidase. Membranes were washed 3 times with
47
48 146 TPBS between the different incubations. Immunoreactive bands were detected using the
49
50 147 Immobilon solutions (Millipore, Billerica, MA, USA) under a chemiluminescence
51
52 148 detection system, the Chemi Doc XRS (Bio-Rad Laboratories, Inc.). Band area intensity
53
54 149 was quantified using the Quantity One software from Bio-Rad. β -actin was used as a

1
2
3 150 loading control. Results are presented as mean \pm SEM of at least **three** independent
4
5 151 experiments.
6
7

8 152

10 153 **Statistical analysis**

12 One-way ANOVA followed by the Student-Newman-Keuls test was used to
13 perform statistical analysis for BrdU, TUNEL and western blot data. GraphPad Prism
14 4.0 software (San Diego, CA, USA) was used and *P*-values ≤ 0.05 were considered
15 156 statistically significant.
16
17
18
19
20
21

22 158

24 159 **Results**

26 160

28 161 **Effects on cell proliferation**

30 To test the effects of SF, SO and RA on cell proliferation of human colon cancer
31 cells, two different colon carcinoma-derived cell lines, HCT15 and CO115, were used.
32
33

34 Based on preliminary experiments using the MTT assay (data not shown), where
35 cells were incubated with several concentrations of sage extracts for 48h, concentrations
36 of each extract that were not cytotoxic and inhibited cell proliferation around 50% were
37 chosen for the subsequent studies. Since RA is the main phenolic compound of these
38 extracts, we also tested RA in similar concentrations to the ones found in the extracts
39 under our experimental conditions.
40
41
42
43
44
45
46
47
48
49

50 The effects of sage extracts and RA on cell proliferation of both cell lines were
51 tested using the BrdU incorporation assay. As shown in Fig. 2A, a significant inhibition
52 of HCT15 cell proliferation by both SF and SO was observed at all concentrations
53 tested. Levels of BrdU incorporation significantly decreased from 26.2% in the control
54 to 4.7% in HCT15 cells treated with 50 μ g/ml of SF and SO extracts. In CO115 cells, SF
55
56
57
58
59
60

1
2
3 175 and SO did not inhibit significantly cell proliferation (Fig. 2B). No significant inhibition
4
5 176 of cell proliferation was observed in both cell lines treated with RA (Fig. 2). Comparing
6
7 177 the effects of sage extracts in the two cell lines, we observed that SF extract was
8
9 178 somewhat more active than SO and HCT15 cells were more sensitive to the sage
10
11 179 extracts.
12
13
14
15
16

17 181 **Effects on apoptosis**

18 182 The ability of SF, SO and RA to induce apoptosis in human colon carcinoma-
19
20 183 derived cells were studied using the TUNEL assay. As shown in Fig. 3, both *Salvia*
21
22 184 extracts and RA significantly induced apoptosis in a concentration dependent manner in
23
24 185 both HCT15 and CO115 cells. Apoptotic cells in HCT15 increased from 0.4% in the
25
26 186 control to 6.6%, 5.8% and 2.5% in SF, SO and RA treatments, respectively, at the
27
28 187 higher concentrations tested (Fig. 3A). In CO115 cells, apoptotic cells increased from
29
30 188 1.8% in the control to 6.8%, 3.8% and 3.6% in the conditions treated with the higher
31
32 189 concentrations tested of SF, SO and RA, respectively (Fig. 3B). Since the basal levels of
33
34 190 apoptosis were higher in the CO115 cell line, overall it seems that the HCT15 cells were
35
36 191 more sensitive to the extracts and RA. Again, SF extract showed to be more active than
37
38 192 SO extract and RA alone.
39
40
41
42
43
44

45 193 The involvement of caspases 3 and 9 in the apoptosis induction by sage extracts
46
47 194 and RA was also studied by western blot. After 24h of treatment with the highest
48
49 195 concentrations used of SF, SO and RA, we did not observe cleaved caspase-9 and
50
51 196 caspase-3 in **either** of cell lines, in contrast with the reference compound, staurosporine
52
53 197 (data not shown).
54
55
56
57

58 198

59 199 **Effects on MAPK/ERK pathway**

1
2
3 200 The effects of sage extracts and RA for 24h were studied on the MAPK/ERK
4
5 201 pathway by western blot. *Salvia* extracts and RA significantly decreased phospho-ERK
6
7 202 protein levels in HCT15 cells (Fig. 4A) while no effects were observed in CO115 cells
8
9 203 (Fig. 4B). The reference inhibitor of phospho-ERK, PD-98059 (PD) was effective in
10
11 204 both cell lines (Fig. 4), in a similar extension than SF, SO and RA in HCT15 cells.
12
13
14
15

205

206 **Effects on PI3K/Akt pathway**

16
17
18
19 207 The effects of sage extracts and RA on the expression of phospho-Akt and
20
21 208 phospho-PTEN (a negative regulator of PI3K/Akt pathway) were also tested. Phospho-
22
23 209 Akt was observed in CO115, however was not detected in HCT15, in medium with and
24
25 210 without serum (data not shown). Neither of the *Salvia* extracts nor RA inhibited
26
27 211 significantly the expression of phospho-Akt in CO115 cells (Fig. 5A). A significant
28
29 212 inhibition of Akt phosphorylation was observed for the reference PI3K inhibitor,
30
31 213 wortmannin (W). HCT15 cells expressed phospho-PTEN and this expression was not
32
33 214 significantly changed by *Salvia* extracts, RA or W (Fig. 5B). CO115 cells did not
34
35 215 express phospho-PTEN or total PTEN, in medium with and without serum (data not
36
37 216 shown).
38
39
40
41
42

217

218 **Discussion**

43
44
45
46
47 219 In order to assess the potential of sage in the control of CRC progression, the
48
49 220 antiproliferative and pro-apoptotic effects of *Salvia fruticosa* (SF) and *Salvia officinalis*
50
51 221 (SO) water extracts and their main phenolic compound, rosmarinic acid (RA), were
52
53 222 studied in two human colon carcinoma-derived cell lines, HCT15 and CO115. Both
54
55 223 sage water extracts (SF and SO) were effective in inhibiting proliferation in a
56
57 224 concentration-dependent manner in HCT15 but not in CO115 cells. SF, SO and RA
58
59
60

1
2
3 225 induced apoptosis. SF was more effective than SO with regard to both antiproliferative
4
5 226 and proapoptotic effects. To identify the bioactive compound behind these effects,
6
7 227 sage's major phenolic compound (RA), was tested individually at concentration similar
8
9 228 to those present in the extracts. However, RA was found not to have antiproliferative
10
11 229 activity but to be proapoptotic in both cell lines, although at less extent than sage
12
13 230 extracts. In view of these results, it seems that other active compounds present in the
14
15 231 extracts may be responsible for the antiproliferative and proapoptotic effects of SF and
16
17 232 SO.
18
19
20
21

22 233 The two cell lines used harbor different activating mutations: HCT15 has a
23
24 234 KRAS (G13D) activating mutation (28) with potential to constitutively activate both
25
26 235 PI3K/Akt and MAPK/ERK pathways, whereas CO115 harbors a BRAF (V599E)
27
28 236 mutation (29) which affects the MAPK/ERK pathway. The highest sensitivity of
29
30 237 HCT15 could be a result of these genetic differences. HCT15 cells, even though
31
32 238 presenting an activating mutation of the RAS oncogene, did not express phospho-Akt
33
34 239 possibly as a consequent of the high levels of the strong negative regulator of this
35
36 240 pathway, phospho-PTEN, found in this cell line. In these cells, the antiproliferative
37
38 241 effects of SF and SO correlate with an inhibition of phospho-ERK. However, RA
39
40 242 showed a significant inhibition of phospho-ERK without inhibiting HCT15 cell
41
42 243 proliferation. Inhibition of phospho-ERK seems, therefore, not to be the only factor
43
44 244 involved in inhibition of cell proliferation in this cell line. Our findings are in agreement
45
46 245 with previous studies (6, 31), which have shown that an inhibition of MAPK/ERK
47
48 246 pathway in KRAS mutated cell lines is not sufficient to inhibit cell proliferation.
49
50 247 Therefore, the KRAS mutated HCT15 cells do not depend exclusively on MAPK/ERK
51
52 248 pathway to proliferate and, as a result, SF and SO seem also to be inhibiting other
53
54 249 proliferation pathways, which in these cells do not include Akt phosphorylation (Fig. 6).
55
56
57
58
59
60

1
2
3 250 In CO115 cells, where SF and SO did not have antiproliferative effect, there was
4
5 251 no inhibition of phospho-ERK or phospho-Akt. RA also did not inhibit proliferation of
6
7 252 CO115 cells. However, in contrast to the effects on the other cell line, RA was without
8
9 253 effect on phospho-ERK. Inhibition of MAPK/ERK pathway by sage extracts and RA in
10
11 254 HCT15 and not CO115 indicates that the effect may be upstream of BRAF and could be
12
13 255 on KRAS (Fig. 6). In CO115 cells, a potential inhibition of RAS by sage extracts would
14
15 256 not result in antiproliferative effects due to the downstream activating mutation of
16
17 257 BRAF (Fig. 6). An inhibition of RAS oncogene has also been recently shown for
18
19 258 quercetin, a common natural-occurring phenolic compound (32, 33). It seems that the
20
21 259 effects of RA depend on cell type and/or genetic background, since also others have
22
23 260 shown that RA decreases ERK phosphorylation in cardiac muscle cells but it is without
24
25 261 effect on Akt and ERK in melanoma cells (34, 35).

26 262 SF, SO and RA induced apoptosis in both cell lines. It seems, however, that
27
28 263 under these conditions apoptosis is not dependent on the cleavage of neither caspase-9
29
30 264 nor caspase-3 in both cell lines. Nevertheless, some authors have shown that RA
31
32 265 promotes apoptosis in human Jurkat cells and HepG2 cells via the mitochondrial
33
34 266 pathway and Bcl-2 suppression in which caspases are involved (36-38). Also the
35
36 267 mitochondrial pathway was induced by RA in activated T cells from rheumatoid
37
38 268 arthritis patients (39). It seems, therefore, that the induction of caspase pathways by RA
39
40 269 is cell type specific and/or dependent on concentration and time of exposure which may
41
42 270 explain the discrepancy between these and our results. The inhibition of MAPK/ERK
43
44 271 pathway may contribute, at least in part, to the effects on apoptosis in HCT15 cells.

45 272 Besides a possible interaction with KRAS, sage extracts may act as
46
47 273 antiproliferative and proapoptotic in these cancer cell lines through their antioxidant
48
49 274 activity. It is known that cancer cells produce increased amounts of ROS, in particularly
50
51
52
53
54
55
56
57
58
59
60

1
2
3 275 hydrogen peroxide (H₂O₂), which could inhibit protein fosfatases and also be associated
4
5 276 with signalling events in MAPK pathways that lead to activation of redox-sensitive
6
7 277 transcription factors, mediating cancer cell proliferation and survival (23, 24).
8
9
10 278 Therefore, the radical scavenging activity of the phenolic compounds present in the sage
11
12 279 extracts may be reducing the ROS levels in these cancer cells contributing also to a
13
14 280 decreased activity of redox-sensitive proliferating pathways, through RAS signalling.
15
16
17 281 Based on RA results, the effects describe in the present study seem, however, not to be
18
19 282 totally explained by the antioxidant properties of the sage extracts.
20
21

22 283 In conclusion, our results show that SF and SO water extracts inhibit
23
24 284 proliferation and induce apoptosis in colon carcinoma-derived cell lines whereas RA
25
26 285 was only effective on the induction of apoptosis. Sage extracts and RA did not affect the
27
28 286 PI3K/Akt pathway but inhibited the MAPK/ERK pathway in the KRAS mutated
29
30 287 HCT15 cell line. The inhibitory effects of sage extracts on phospho-ERK seem to result
31
32 288 from an inhibition of KRAS, upstream to BRAF, since it was not observed in CO115
33
34 289 cells. The inhibition of MAPK/ERK by sage extracts seems, however, not to completely
35
36 290 explain the inhibition of cell proliferation in HCT15, since RA inhibits phospho-ERK
37
38 291 without affecting cell proliferation. These data add *S. fruticosa* and *S. officinalis* to the
39
40 292 list of potential sources of new active anticancer compounds useful in particular in
41
42 293 tumors with a mutagenic KRAS activation and also suggest their possible use in dietary
43
44 294 strategies for the control of CRC progression.
45
46
47
48
49

50 295

51 296 **Acknowledgements**

52
53 297 The authors thank Dr. Raquel Seruca (from IPATIMUP, Portugal) for providing
54
55 298 the HCT15 and CO115 cell lines, as well as Dr. Ana Preto for PD-98059. This work
56
57 299 was supported by the Foundation for Science and Technology, Portugal, research grant
58
59
60

1
2
3 300 POCI/AGR/62040/2004. CPRX and CFL are supported by the Foundation for Science
4
5 301 and Technology, Portugal, through the grants SFRH/BD/27524/2006 and
6
7 302 SFRH/BPD/26316/2006, respectively. Address correspondence to Cristina Pereira-
8
9 303 Wilson, Department of Biology, University of Minho, 4710-057 Braga, Portugal. E-
10
11 304 mail: cpereira@bio.uminho.pt.
12
13
14
15
16
17
18
19
20
21
22
23
24
25
26
27
28
29
30
31
32
33
34
35
36
37
38
39
40
41
42
43
44
45
46
47
48
49
50
51
52
53
54
55
56
57
58
59
60

For Peer Review Only

References

1. Cheng JQ, Lindsley CW, Cheng GZ, Yang H, Nicosia SV: The Akt/PKB pathway: molecular target for cancer drug discovery. *Oncogene* **24**, 7482-7492, 2005.
2. Thompson N, Lyons J: Recent progress in targeting the Raf/MEK/ERK pathway with inhibitors in cancer drug discovery. *Curr Opin Pharmacol* **5**, 350-356, 2005.
3. Barault L, Veyries N, Jooste V, Lecorre D, Chapusot C, et al.: Mutations in the RAS-MAPK, PI(3)K (phosphatidylinositol-3-OH kinase) signaling network correlate with poor survival in a population-based series of colon cancers. *Int J Cancer* **122**, 2255-2259, 2008.
4. McCubrey JA, Steelman LS, Abrams SL, Lee JT, Chang F, et al.: Roles of the RAF/MEK/ERK and PI3K/PTEN/AKT pathways in malignant transformation and drug resistance. *Adv Enzyme Regul* **46**, 249-279, 2006.
5. Karoui M, Tresallet C, Brouquet A, Radvanyi H, Penna C: [Colorectal carcinogenesis. 1. Hereditary predisposition and colorectal cancer]. *J Chir (Paris)* **144**, 13-18, 2007.
6. Preto A, Figueiredo J, Velho S, Ribeiro A, Soares P, Oliveira C, Seruca R: BRAF provides proliferation and survival signals in MSI colorectal carcinoma cells displaying BRAF(V600E) but not KRAS mutations. *J Pathol* **214**, 320-327, 2008.
7. Oliveira C, Velho S, Moutinho C, Ferreira A, Preto A, et al.: KRAS and BRAF oncogenic mutations in MSS colorectal carcinoma progression. *Oncogene* **26**, 158-163, 2007.
8. Oikonomou E, Pintzas A: Cancer genetics of sporadic colorectal cancer: BRAF and PI3KCA mutations, their impact on signaling and novel targeted therapies. *Anticancer Res* **26**, 1077-1084, 2006.

- 1
2
3 9. Schubbert S, Shannon K, Bollag G: Hyperactive Ras in developmental disorders
4 and cancer. *Nat Rev Cancer* **7**, 295-308, 2007.
5
6
- 7
8 10. Itoh N, Semba S, Ito M, Takeda H, Kawata S, Yamakawa M: Phosphorylation
9 of Akt/PKB is required for suppression of cancer cell apoptosis and tumor
10 progression in human colorectal carcinoma. *Cancer* **94**, 3127-3134, 2002.
11
12
- 13 11. Roy HK, Olusola BF, Clemens DL, Karolski WJ, Ratashak A, Lynch HT,
14 Smyrk TC: AKT proto-oncogene overexpression is an early event during
15 sporadic colon carcinogenesis. *Carcinogenesis* **23**, 201-205, 2002.
16
17
- 18 12. Velho S, Oliveira C, Ferreira A, Ferreira AC, Suriano G, et al.: The prevalence
19 of PIK3CA mutations in gastric and colon cancer. *Eur J Cancer* **41**, 1649-1654,
20 2005.
21
22
- 23 13. Khaleghpour K, Li Y, Banville D, Yu Z, Shen SH: Involvement of the PI 3-
24 kinase signaling pathway in progression of colon adenocarcinoma.
25 *Carcinogenesis* **25**, 241-248, 2004.
26
27
- 28 14. Manson MM: Cancer prevention -- the potential for diet to modulate molecular
29 signalling. *Trends Mol Med* **9**, 11-18, 2003.
30
31
- 32 15. Sarkar FH, Li YW: Targeting multiple signal pathways by chemopreventive
33 agents for cancer prevention and therapy. *Acta Pharmacol Sin* **28**, 1305-1315,
34 2007.
35
36
- 37 16. Hemaiswarya S, Doble M: Potential synergism of natural products in the
38 treatment of cancer. *Phytother Res* **20**, 239-249, 2006.
39
40
- 41 17. Aggarwal BB, Shishodia S: Molecular targets of dietary agents for prevention
42 and therapy of cancer. *Biochem Pharmacol* **71**, 1397-1421, 2006.
43
44
- 45 18. Davis CD, Hord NG: Nutritional "omics" technologies for elucidating the role(s)
46 of bioactive food components in colon cancer prevention. *J Nutr* **135**, 2694-
47 2697, 2005.
48
49
50
51
52
53
54
55
56
57
58
59
60

- 1
2
3
4
5
6
7
8
9
10
11
12
13
14
15
16
17
18
19
20
21
22
23
24
25
26
27
28
29
30
31
32
33
34
35
36
37
38
39
40
41
42
43
44
45
46
47
48
49
50
51
52
53
54
55
56
57
58
59
60
19. Davis CD, Milner JA: Biomarkers for diet and cancer prevention research: potentials and challenges. *Acta Pharmacol Sin* **28**, 1262-1273, 2007.
 20. Yang CS, Landau JM: Effects of tea consumption on nutrition and health. *J Nutr* **130**, 2409-2412, 2000.
 21. Fiore G, Nencini C, Cavallo F, Capasso A, Bader A, Giorgi G, Micheli L: In vitro antiproliferative effect of six *Salvia* species on human tumor cell lines. *Phytother Res* **20**, 701-703, 2006.
 22. Liu J, Shen HM, Ong CN: *Salvia miltiorrhiza* inhibits cell growth and induces apoptosis in human hepatoma HepG(2) cells. *Cancer Lett* **153**, 85-93, 2000.
 23. Loo G: Redox-sensitive mechanisms of phytochemical-mediated inhibition of cancer cell proliferation (review). *J Nutr Biochem* **14**, 64-73, 2003.
 24. Fruehauf JP, Meyskens FL, Jr.: Reactive oxygen species: a breath of life or death? *Clin Cancer Res* **13**, 789-794, 2007.
 25. Lima CF, Valentao PC, Andrade PB, Seabra RM, Fernandes-Ferreira M, Pereira-Wilson C: Water and methanolic extracts of *Salvia officinalis* protect HepG2 cells from t-BHP induced oxidative damage. *Chem Biol Interact* **167**, 107-115, 2007.
 26. Lima CF: **Effects of *Salvia officinalis* in the liver: relevance of glutathione levels.** *PhD thesis*. Braga: University of Minho; 2006.
 27. Lima CF, Fernandes-Ferreira M, Pereira-Wilson C: Phenolic compounds protect HepG2 cells from oxidative damage: relevance of glutathione levels. *Life Sci* **79**, 2056-2068, 2006.
 28. Gayet J, Zhou XP, Duval A, Rolland S, Hoang JM, Cottu P, Hamelin R: Extensive characterization of genetic alterations in a series of human colorectal cancer cell lines. *Oncogene* **20**, 5025-5032, 2001.

- 1
2
3
4
5
6
7
8
9
10
11
12
13
14
15
16
17
18
19
20
21
22
23
24
25
26
27
28
29
30
31
32
33
34
35
36
37
38
39
40
41
42
43
44
45
46
47
48
49
50
51
52
53
54
55
56
57
58
59
60
29. Oliveira C, Pinto M, Duval A, Brennetot C, Domingo E, et al.: BRAF mutations characterize colon but not gastric cancer with mismatch repair deficiency. *Oncogene* **22**, 9192-9196, 2003.
 30. Lima CF, Andrade PB, Seabra RM, Fernandes-Ferreira M, Pereira-Wilson C: The drinking of a *Salvia officinalis* infusion improves liver antioxidant status in mice and rats. *J Ethnopharmacol* **97**, 383-389, 2005.
 31. Solit DB, Garraway LA, Pratilas CA, Sawai A, Getz G, et al.: BRAF mutation predicts sensitivity to MEK inhibition. *Nature* **439**, 358-362, 2006.
 32. Psahoulia FH, Moumtzi S, Roberts ML, Sasazuki T, Shirasawa S, Pintzas A: Quercetin mediates preferential degradation of oncogenic Ras and causes autophagy in Ha-RAS-transformed human colon cells. *Carcinogenesis* **28**, 1021-1031, 2007.
 33. Ranelletti FO, Maggiano N, Serra FG, Ricci R, Larocca LM, et al.: Quercetin inhibits p21-RAS expression in human colon cancer cell lines and in primary colorectal tumors. *Int J Cancer* **85**, 438-445, 2000.
 34. Kim DS, Kim HR, Woo ER, Hong ST, Chae HJ, Chae SW: Inhibitory effects of rosmarinic acid on adriamycin-induced apoptosis in H9c2 cardiac muscle cells by inhibiting reactive oxygen species and the activations of c-Jun N-terminal kinase and extracellular signal-regulated kinase. *Biochem Pharmacol* **70**, 1066-1078, 2005.
 35. Lee J, Kim YS, Park D: Rosmarinic acid induces melanogenesis through protein kinase A activation signaling. *Biochem Pharmacol* **74**, 960-968, 2007.
 36. Kolettas E, Thomas C, Leneti E, Skoufos I, Mbatsi C, Sisoula C, Manos G, Evangelou A: Rosmarinic acid failed to suppress hydrogen peroxide-mediated apoptosis but induced apoptosis of Jurkat cells which was suppressed by Bcl-2. *Mol Cell Biochem* **285**, 111-120, 2006.

- 1
2
3
4
5
6
7
8
9
10
11
12
13
14
15
16
17
18
19
20
21
22
23
24
25
26
27
28
29
30
31
32
33
34
35
36
37
38
39
40
41
42
43
44
45
46
47
48
49
50
51
52
53
54
55
56
57
58
59
60
37. Hur YG, Yun Y, Won J: Rosmarinic acid induces p53-dependent apoptosis in Jurkat and peripheral T cells via mitochondrial pathway independent from Fas/Fas ligand interaction. *J Immunol* **172**, 79-87, 2004.
38. Lin CS, Kuo CL, Wang JP, Cheng JS, Huang ZW, Chen CF: Growth inhibitory and apoptosis inducing effect of *Perilla frutescens* extract on human hepatoma HepG2 cells. *J Ethnopharmacol* **112**, 557-567, 2007.
39. Hur YG, Suh CH, Kim S, Won J: Rosmarinic acid induces apoptosis of activated T cells from rheumatoid arthritis patients via mitochondrial pathway. *J Clin Immunol* **27**, 36-45, 2007.

Appendixes

Figure 1. Chemical structure of rosmarinic acid (RA).

Figure 2. Effect of different concentrations of *Salvia fruticosa* (SF), *Salvia officinalis* (SO) and rosmarinic acid (RA), for 48h, on BrdU incorporation in HCT15 (A) and CO115 (B) cells. Values are mean \pm SEM of at least 3 independent experiments. * $P \leq 0.05$ and *** $P \leq 0.001$ when compared to control.

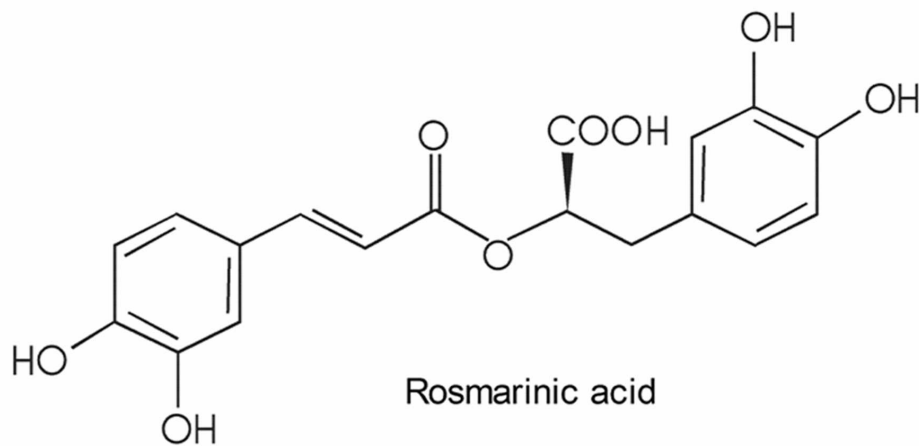
Figure 3. Effect of different concentrations *Salvia fruticosa* (SF), *Salvia officinalis* (SO) and rosmarinic acid (RA) on apoptosis, for 48h, as assessed by the TUNEL assay, of HCT15 (A) and CO115 (B) cell lines. Values are mean \pm SEM of at least 3 independent experiments. * $P \leq 0.05$, ** $P \leq 0.01$ and *** $P \leq 0.001$ when compared to control.

Figure 4. Effects of *Salvia fruticosa* 50 μ g/ml (SF50), *Salvia officinalis* 50 μ g/ml (SO50) and rosmarinic acid 100 μ M (RA100) for 24h on the expression of phospho-ERK in HCT15 cells (A) and CO115 cells (B). PD-98059 50 μ M (PD50) was used as a reference inhibitor of phospho-ERK. Values are mean \pm SEM of at least 3 independent experiments. * $P \leq 0.05$ and *** $P \leq 0.001$ when compared to control.

Figure 5. Effects of *Salvia fruticosa* 50 μ g/ml (SF50), *Salvia officinalis* 50 μ g/ml (SO50) and rosmarinic acid 100 μ M (RA100) for 24h on the expression of phospho-Akt in CO115 cells (A) and phospho-PTEN in HCT15 cells (B). Wortmannin 1 μ M (W1) was used as a reference inhibitor of PI3K. No phospho-Akt expression was observed in

1
2
3 HCT15 cells and no PTEN expression was observed in CO115 cells. Values are mean \pm
4
5 SEM of at least 3 independent experiments. ** $P \leq 0.01$ when compared to control.
6
7
8
9

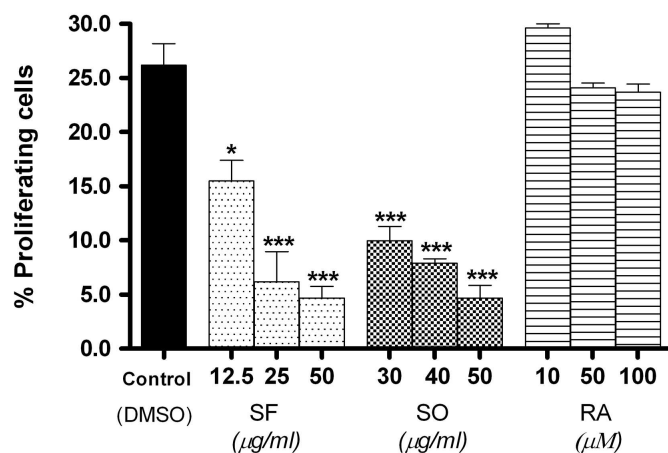
10 **Figure 6.** Model for the inhibition of ERK phosphorylation by *Salvia fruticosa* (SF),
11 *Salvia officinalis* (SO) and rosmarinic acid (RA) in HCT15 but not in CO115 cells. SF,
12 SO and RA inhibit mutant KRAS leading to a decrease on the levels of phospho-ERK in
13 HCT15 cell line. In CO115 cells, SF, SO and RA do not change ERK phosphorylation
14 levels due to a BRAF activating mutation downstream RAS oncogene. The missing
15 PTEN in CO115 cells and phospho-Akt in HCT15 cells were also observed in this
16 study.
17
18
19
20
21
22
23
24
25
26
27
28
29
30
31
32
33
34
35
36
37
38
39
40
41
42
43
44
45
46
47
48
49
50
51
52
53
54
55
56
57
58
59
60



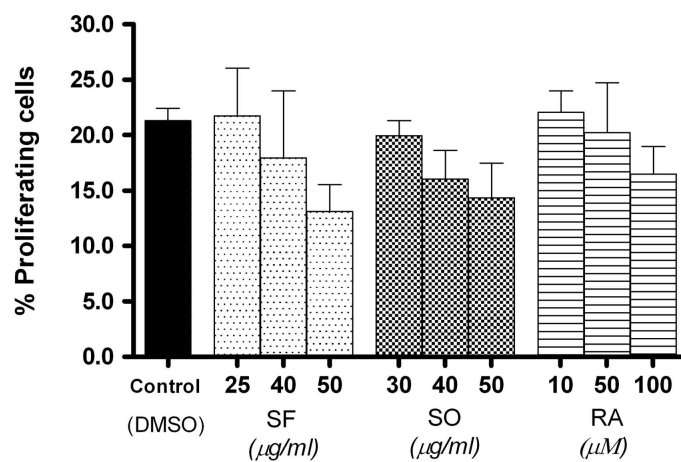
Chemical structure of rosmarinic acid (RA).
80x44mm (600 x 600 DPI)

Review Only

A BrdU incorporation in HCT15



B BrdU incorporation in CO115

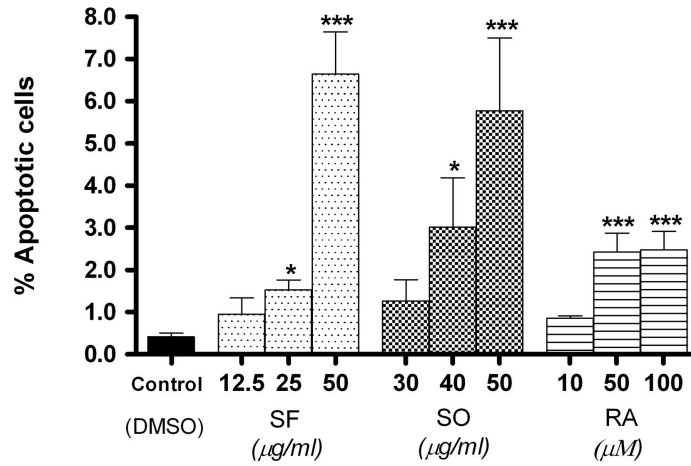


Effect of different concentrations of *Salvia fruticosa* (SF), *Salvia officinalis* (SO) and rosmarinic acid (RA), for 48h, on BrdU incorporation in HCT15 (A) and CO115 (B) cells. Values are mean \pm SEM of at least 3 independent experiments. * $P \leq 0.05$ and *** $P \leq 0.001$ when compared to control.

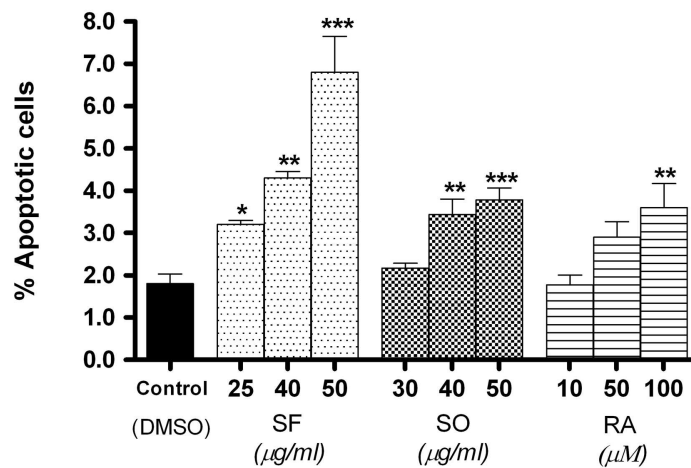
80x127mm (600 x 600 DPI)

1
2
3
4
5
6
7
8
9
10
11
12
13
14
15
16
17
18
19
20
21
22
23
24
25
26
27
28
29
30
31
32
33
34
35
36
37
38
39
40
41
42
43
44
45
46
47
48
49
50
51
52
53
54
55
56
57
58
59
60

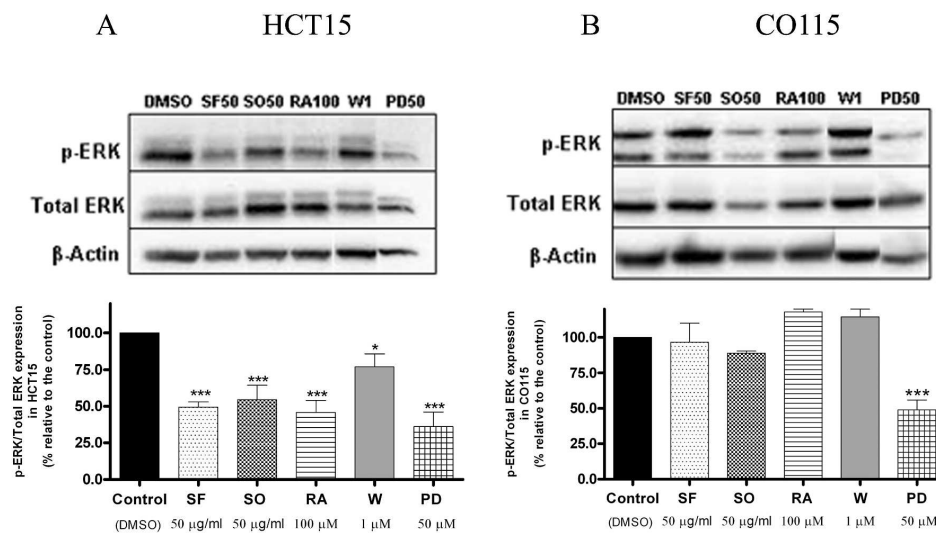
A TUNEL assay in HCT15



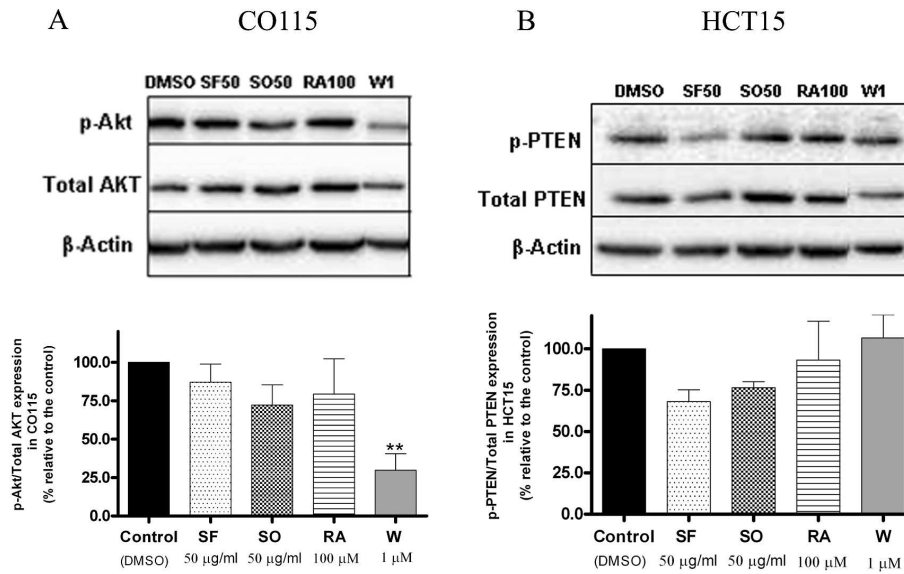
B TUNEL assay in CO115



Effect of different concentrations Salvia fruticosa (SF), Salvia officinalis (SO) and rosmarinic acid (RA) on apoptosis, for 48h, as assessed by the TUNEL assay, of HCT15 (A) and CO115 (B) cell lines. Values are mean \pm SEM of at least 3 independent experiments. * $P \leq 0.05$, ** $P \leq 0.01$ and *** $P \leq 0.001$ when compared to control.
80x122mm (600 x 600 DPI)

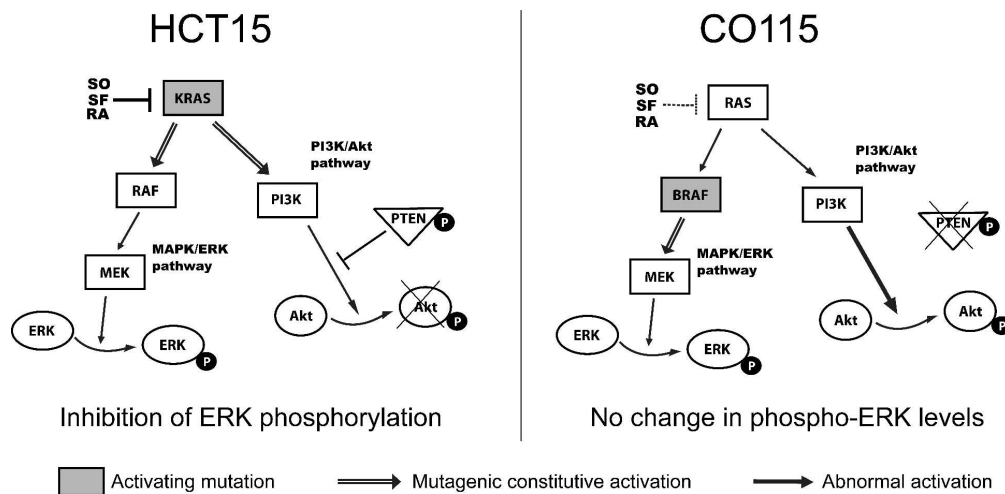


28 Effects of *Salvia fruticosa* 50µg/ml (SF50), *Salvia officinalis* 50µg/ml (SO50) and rosmarinic acid
 29 100µM (RA100) for 24h on the expression of phospho-ERK in HCT15 cells (A) and CO115 cells (B).
 30 PD-98059 50µM (PD50) was used as a reference inhibitor of phospho-ERK. Values are mean ± SEM
 31 of at least 3 independent experiments. *P ≤ 0.05 and ***P ≤ 0.001 when compared to control.
 32 160x94mm (600 x 600 DPI)



Effects of *Salvia fruticosa* 50 μ g/ml (SF50), *Salvia officinalis* 50 μ g/ml (SO50) and rosmarinic acid 100 μ M (RA100) for 24h on the expression of phospho-Akt in CO115 cells (A) and phospho-PTEN in HCT15 cells (B). Wortmannin 1 μ M (W1) was used as a reference inhibitor of PI3K. No phospho-Akt expression was observed in HCT15 cells and no PTEN expression was observed in CO115 cells. Values are mean \pm SEM of at least 3 independent experiments. **P \leq 0.01 when compared to control.

160x94mm (600 x 600 DPI)



25 Model for the inhibition of ERK phosphorylation by *Salvia fruticosa* (SF), *Salvia officinalis* (SO) and
 26 rosmarinic acid (RA) in HCT15 but not in CO115 cells. SF, SO and RA inhibit mutant KRAS leading to
 27 a decrease on the levels of phospho-ERK in HCT15 cell line. In CO115 cells, SF, SO and RA do not
 28 change ERK phosphorylation levels due to a BRAF activating mutation downstream RAS oncogene.
 29 The missing PTEN in CO115 cells and phospho-Akt in HCT15 cells were also observed in this study.
 30 327x159mm (600 x 600 DPI)