

Acetylation Genotype and the Genetic Susceptibility to Prostate Cancer in a Southern European Population

Sandra Costa,^{1,2*} Daniela Pinto,² Antonio Morais,³ André Vasconcelos,²
Jorge Oliveira,³ Carlos Lopes,^{2,4} and Rui Medeiros^{2,4}

¹ICVS, Life and Health Sciences Research Institute, Health Science School, Minho University, Braga, Portugal

²Molecular Oncology/Department of Pathology, Instituto Português de Oncologia - Porto, Porto, Portugal

³Urology Department, Instituto Português de Oncologia - Porto, Porto, Portugal

⁴ICBAS, Abel Salazar Institute for the Biomedical Sciences, Porto, Portugal

BACKGROUND. Epidemiologic studies have suggested that environmental factors and diet are important risk factors in the pathogenesis of prostate cancer. The *N*-acetyltransferases (NAT) are important enzymes in activation and inactivation of various carcinogens, including those found in well-cooked meat and cigarette smoke.

METHODS. We analyzed DNA samples from 146 prostate cancer patients and 174 healthy men. We used PCR–RFLP method to analyze *NAT1* and *NAT2* polymorphisms.

RESULTS. We did not find statistically significant differences in *NAT1* genotypes frequencies between prostate cancer patients and control group. We observed an association of the slow acetylator genotype, *NAT2*6/NAT2*6* with prostate cancer protection ($P = 0.017$; OR = 0.31, 95% CI 0.11–0.84). Multivariate logistic regression analysis confirmed this association (0.030; OR = 0.32, 95% CI 0.12–0.89).

CONCLUSIONS. Our results indicate a role of *NAT2* polymorphisms in the carcinogenic pathway of prostate cancer, specifically in a population of Southern Europe. *Prostate* 64: 246–252, 2005. © 2005 Wiley-Liss, Inc.

KEY WORDS: NAT; polymorphisms; prostate cancer; acetylation; heterocyclic aromatic amines

INTRODUCTION

Prostate cancer is one of the most common malignancies in Western countries, being the second in cancer incidence and the third in cancer mortality among men in Portugal [1]. Several factors are associated with an increased risk for prostate cancer. Epidemiologic studies have suggested that environmental factors, including ultra-violet radiation [2], smoking [3] and diet, including meat and fat intake [4], are involved in the development of prostate cancer. Many chemical and dietary carcinogens, especially heterocyclic amines derived from well-cooked meat, seem to be involved in the pathogenesis of prostate cancer [5].

The *N*-acetyltransferase (NAT) activity enrolls an important step in both activation and inactivation of numerous carcinogens, found for example in well-cooked meat and cigarette smoke, respectively [6]. Therefore, the acetylator status may modify individual

response to various chemicals and thus individual cancer susceptibility.

NATs are encoded by two genes, *NAT1* and *NAT2*, located in chromosome 8p 21.3–23.1 [7]. Both genes are highly polymorphic. To date, 29 *NAT2* alleles have been identified [8]. Individuals who have two or more *NAT2* polymorphisms have a slow acetylator phenotype, individuals heterozygous for *NAT2* polymorphisms have a rapid/intermediate acetylator phenotype, and those who lacked *NAT2* polymorphisms have a rapid acetylator phenotype. Among all the *NAT2* allelic

*Correspondence to: Sandra Costa, ICVS—Health Sciences School, Minho University, Campus Gualtar, 4710-057 Braga, Portugal.
E-mail: sandracostas@portugalmail.com

Received 23 July 2004; Accepted 12 November 2004

DOI 10.1002/pros.20241

Published online 16 February 2005 in Wiley InterScience

(www.interscience.wiley.com).

variants, two (*NAT2*5* and *NAT2*6*) were shown to account for most of slow *NAT2* acetylator genotypes in Caucasian populations [9]. Previous studies have found associations between *NAT2* polymorphisms and cancer risk [10–15].

Polymorphisms in *NAT1* yield over 25 variant alleles [8]. A common *NAT1* allelic variant (*NAT1*10*) is associated with increased catalytic activity (rapid acetylator phenotype) [16]. This allelic variant has been associated with increased risk to colorectal cancer, compared with *NAT1*4* homozygotes [17].

It has been reported that human prostate epithelial cells metabolize potential carcinogens [17]. Furthermore, Wang et al. demonstrated the expression of *NAT1* and *NAT2* transcripts in prostate cells [5]. Therefore, individual susceptibility to prostate cancer may be modified by genetic polymorphisms in *NAT1* and *NAT2* enzymes. The aim of this study was to assess the association between *NAT1* and *NAT2* polymorphisms and prostate cancer in a Portuguese population.

MATERIALS AND METHODS

Patients

Consecutive patients ($n = 146$) with histologically confirmed prostate cancer (median age 66 years) were enrolled in this study between 1999 and 2000 from the Department of Urology of the Portuguese Institute of Oncology, Porto. Clinical characterization including Gleason grade, disease status, age at diagnosis, and prostate specific antigen (PSA) was obtained from medical records. The control group consisted of 174 healthy individuals with no evidence of neoplastic disease and a median age of 64 years. All participants were Caucasian living in Porto district.

Approximately, 8 ml of venous blood was obtained with a standard venipuncture technique using EDTA tubes. DNA was extracted from the white blood cell fraction from each study subject using a salting-out protocol [18].

Genotyping of *NAT1* and *NAT2* Polymorphisms

For *NAT1* genotype analysis we used a PCR–RFLP method already described [19]. PCR conditions was performed as follows: 100 ng of genomic DNA was added to 0.25 μ M of each primer, 0.2 mM of each dNTP, 1.5 mM $MgCl_2$, 1 \times *Taq* buffer and 1U of *Taq* DNA-polymerase to a final volume of 50 μ l. Thirty five cycles were performed, consisting of 94°C (30 sec) for denaturation, 45°C (30 sec) for primer annealing, and 72°C (45 sec) for primer extension. To differentiate *NAT1*4*, *NAT1*10*, and *NAT1*11* alleles, PCR product was subjected to enzymatic digestion with *Mbo* II enzyme. Restriction products were submitted to electrophoresis in 4% Metaphor high resolution agarose

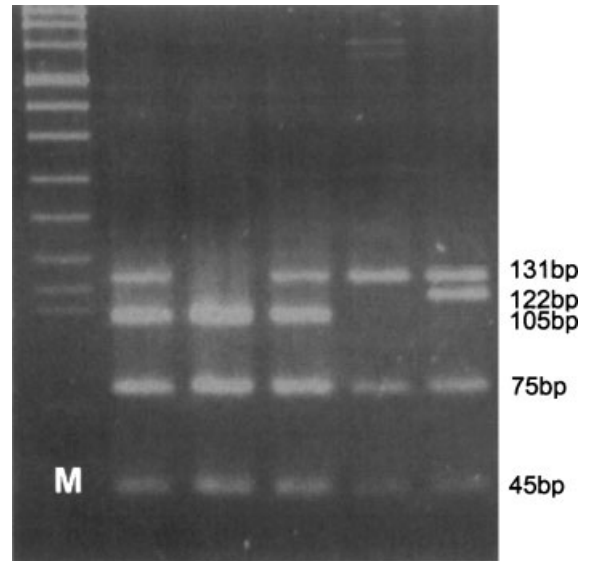


Fig. 1. *Mbo* II RFLPs of the PCR products of the *NAT1* alleles: *NAT1*4* alleles—105, 71, 45, and 26 bp fragments, *NAT1*10* allele—131, 75, 45, and 26 bp fragments and *NAT1*11* allele—122, 75, 45, and 26 bp fragments (M-DNA Molecular Weight Marker VIII (Roche[®])).

gel (Fig. 1). Digestion of *NAT1*4* resulted in fragments of 105, 71, 45, and 26 base pairs (bp), *NAT1*10* in fragments of 131, 75, 45, and 26 bp. The *NAT1*11* allele can be distinguished by observation of a 9 bp mobility shift of the 131 bp band to a 122 bp band.

Genotyping for *NAT2* was carried out using the PCR–RFLP method [20]. The reactions of PCR consisted of nearly 100 ng of genomic DNA, 1 μ M of each primer, 0.2 mM of each dNTP, 1.5 mM $MgCl_2$, 1 \times *Taq* buffer, and 1 U of *Taq* DNA-polymerase to a final volume of 50 μ l. Thirty cycles were performed, consisting of 98°C (30 sec) for denaturation, 62°C (1 min) for primer annealing, and 72°C (1 min) for primer extension. After amplification, 15 μ l of PCR was digested with 20 U of the *Kpn* I and *Taq* I restriction enzymes (positions 480 and 590) specific for the two different *NAT2* allelic variants to be screened (*NAT2*5* and *NAT2*6*, respectively). Restriction products were submitted to electrophoresis in 2% agarose gels. After digestion with *Kpn* I, the 481-T (*NAT2*5*) and 481-C (*NAT2*4*) alleles were visualized as fragments of 290 bp and 170 plus 120 bp, respectively (Fig. 2A). The 590-A (*NAT2*6*) and 590-G (*NAT2*4*) alleles were visualized as fragments of 290 and 230 plus 60 bp, respectively, after digestion with *Taq* I (Fig. 2B).

Statistical Analysis

Analysis of data was performed using the program SPSS for Windows (version 11.0). Chi-square analysis was used to compare categorical variables. A 5% level significance was used in the analysis. The odds ratio

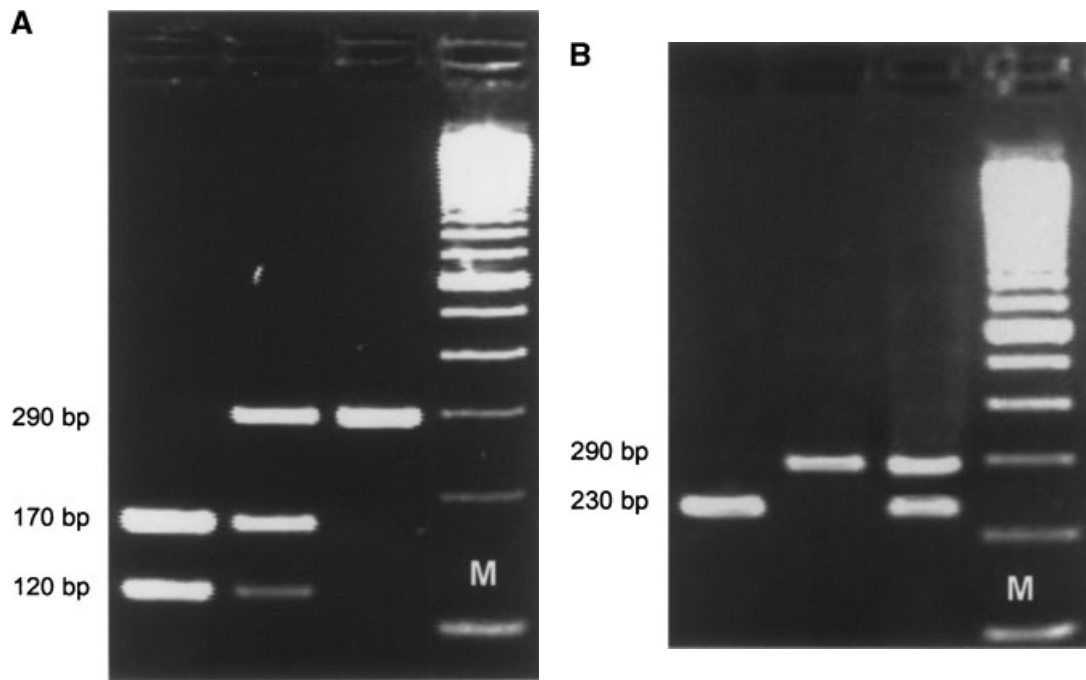


Fig. 2. RFLP of the PCR products of the *NAT2* alleles. *Kpn* I restriction (**A**) 290 bp fragment—*NAT2**5 allele; 170 plus 120 bp fragments—*NAT2**4 allele. *Taq* I restriction (**B**) 290 bp fragment—*NAT2**6 allele; 230 bp plus 60 bp fragments (not visualized)—*NAT2**4 allele. (M—100 bp DNA ladder (Gibco BRL[®])).

(OR) and its 95% confidence interval (CI) was calculated as a measure of the association between *NAT1* and *NAT2* genotypes and prostate cancer risk. Multivariate logistic regression analysis was used to calculate the adjusted OR and 95% CI for the influence of *NAT* genotypes in the risk of prostate cancer, with adjustment for age. We stratified the analysis according to Gleason grade, disease status, age at diagnosis (median age), and risk of disease progression (PSA higher than 10 mg/ml).

RESULTS

The frequencies of *NAT1* genotypes in prostate cancer cases and controls are shown in Table I. The

most common genotype was *NAT1**4/*NAT1**4 both in cases (73.6%) and controls (75.2%). The *NAT1**11 allele was rare in controls (0.7%) and was not found in the case groups. The frequency of *NAT1**10 genotypes was similar between cases and controls. There were not statistically significant differences in *NAT1* genotypes between prostate cancer patients and healthy individuals.

The frequency of *NAT2* genotypes in cases and controls is shown in Table II. A statistically significant difference was observed in the frequency of a *NAT2* slow acetylator genotype, *NAT2**6/*NAT2**6, in prostate cancer patients (3.4%) when compared with the control group (10.3%) ($P = 0.017$; OR = 0.31, 95% CI 0.11–0.84).

TABLE I. *NAT1* Genotype Frequencies in Prostate Cancer Cases and Controls With Odds Ratio (OR)

<i>NAT1</i> genotype	Cases		Controls		OR (95% CI) ^a	<i>P</i>
	n	%	n	%		
<i>NAT1</i> *4/ <i>NAT1</i> *4	95	73.6	109	75.2	0.92 (0.53–1.58)	0.772
<i>NAT1</i> *4/ <i>NAT1</i> *10	26	20.2	29	20.0	1.01 (0.55–1.82)	0.974
<i>NAT1</i> *10/ <i>NAT1</i> *11	0	0	1	0.7	—	0.345
<i>NAT1</i> *10/ <i>NAT1</i> *10	6	4.7	6	4.1	1.13 (0.35–3.59)	0.836

^aOR were calculated from the ratio of the number of genotypes in interest versus all the other genotypes.

TABLE II. NAT2 Genotype Frequencies in Prostate Cancer Cases and Controls With OR

NAT2 genotype	Cases		Controls		OR (95% CI) ^a	P
	n	%	n	%		
NAT2*4/NAT2*4	9	6.2	9	5.2	1.20 (0.46–3.11)	0.701
NAT2*4/NAT2*5	39	26.7	54	31.0	0.81 (0.49–1.31)	0.396
NAT2*4/NAT2*6	38	26.0	32	18.4	1.56 (0.091–2.66)	0.100
NAT2*5/NAT2*6	31	21.1	37	21.3	0.99 (0.058–1.70)	0.995
NAT2*5/NAT2*5	24	16.4	24	13.8	1.23 (0.66–2.27)	0.509
NAT2*6/NAT2*6	5	3.4	18	10.3	0.31 (0.11–0.84) ^b	0.017

^aOR was calculated from the ratio of the number of genotypes in interest versus all the other genotypes.

^bAdjusted OR for age (logistic regression analysis): OR = 0.32, 95% CI 0.12–0.89; P = 0.03.

Multivariate logistic regression analysis confirmed this association of NAT2*6/NAT2*6 genotype with prostate cancer protection (P = 0.030; OR = 0.32, 95% CI 0.12–0.89).

The association of NAT1 genotypes and clinico-pathologic features of prostate cancer cases studied is shown in Table III. No differences were found in the frequencies of NAT1 genotypes regarding median age of diagnosis, Gleason grade, disease status (advanced or localized), and PSA levels. The same results were obtained considering NAT2 genotypes (Table IV). However, NAT2*6/NAT2*6 genotype frequency was higher in prostate cancer patients with PSA levels lower

than 10 mg/ml, with suggestive statistical significance (P = 0.054).

DISCUSSION

Prostate cancer appears to be dependent on the interaction between environmental and genetics factors, particularly dietary [21]. Several studies reported that diet could alter steroid hormonal profile and modify prostate cancer risk [22]. It has been proposed that heterocyclic amines and polycyclic hydrocarbons, which are produced by cooking meat at high temperature, act as carcinogens in prostate cancer carcinogenesis [5,17].

TABLE III. Association of NAT1 Genotypes With the Clinical and Pathological Features of Prostate Cancer Cases Studied

	NAT1 genotypes							
	NAT1*4/NAT1*4		NAT1*4/NAT1*10		NAT1*4/NAT1*11		NAT1*10/NAT1*10	
	n (%)	P value	n (%)	P value	n (%)	P value	n (%)	P value
Median age								
Age >66	40 (71.4)	0.607	13 (23.2)	0.448	1 (1.8)	0.682	2 (3.6)	0.472
Age ≤66	55 (75.3)		13 (17.8)		1 (1.4)		4 (5.5)	
Gleason grade								
Gleason >7	15 (78.9)	0.422	2 (10.5)	0.209	1 (5.3)	0.284	1 (5.3)	0.571
Gleason ≤7	77 (73.3)		23 (21.9)		1 (1.0)		4 (3.8)	
PSA levels								
PSA >10	64 (72.7)	0.741	19 (21.6)	0.964	2 (2.3)	0.527	3 (3.4)	0.202
PSA ≤10	27 (69.7)		3 (21.2)		0 (0.0)		3 (9.1)	
Disease status								
Advanced	44 (69.8)	0.338	13 (20.6)	0.894	1 (1.6)	0.740	5 (7.9)	0.094
Localized	51 (77.3)		13 (19.7)		1 (1.5)		1 (1.5)	

TABLE IV. Association of NAT2 Genotypes With the Clinical and Pathological Features of Prostate Cancer Cases Studied

	NAT2 genotypes											
	NAT2*4/NAT2*4		NAT2*4/NAT2*5		NAT2*4/NAT2*6		NAT2*5/NAT2*6		NAT2*5/NAT2*5		NAT2*6/NAT2*6	
	n (%)	P value	n (%)	P value	n (%)	P value	n (%)	P value	n (%)	P value	n (%)	P value
Median age												
Age >66	4 (5.6)	0.535	16 (22.5)	0.267	18 (25.4)	0.856	19 (26.8)	0.112	12 (16.9)	0.883	2 (2.8)	0.526
Age ≤66	5 (6.7)		23 (30.7)		20 (26.7)		12 (16.0)		12 (16.0)		3 (4.0)	
Gleason Grade												
Gleason >7	1 (4.0)	0.494	9 (36.0)	0.241	7 (28.0)	0.935	5 (20.0)	0.832	3 (12.0)	0.496	0 (0.0)	0.365
Gleason ≤7	8 (7.0)		28 (24.6)		31 (27.2)		25 (21.9)		17 (14.9)		5 (4.4)	
PSA levels												
PSA >10	8 (8.5)	0.267	25 (26.6)	0.460	25 (26.6)	0.791	23 (24.5)	0.136	12 (12.8)	0.308	1 (1.1)	0.054
PSA ≤10	1 (3.0)		11 (33.3)		8 (24.2)		4 (12.1)		6 (18.2)		3 (9.1)	
Disease status												
Advanced	2 (2.7)	0.083	23 (31.5)	0.190	18 (24.7)	0.706	17 (23.3)	0.544	12 (16.4)	1.000	1 (1.4)	0.183
Localized	7 (9.6)		16 (21.9)		20 (27.4)		14 (19.2)		12 (16.4)		4 (5.5)	

NAT enzymes are involved in the metabolism of many carcinogens, including heterocyclic amines present in cooking meat at high temperature [4,17]. Both NAT1 and NAT2 are responsible for both *N*-acetylation (usually deactivation) and *O*-acetylation (usually activation) activities of aromatic and heterocyclic amines carcinogens [23]. Another fact that should be taken in consideration is that prostate cancer has been associated with genetic alterations that include regions of deletions on different chromosomal regions, such as 8p 22-23 [24], which is the region of *NAT* genes [7]. Therefore, we hypothesise that *NAT1* and *NAT2* acetylase genotypes could be associated with susceptibility to prostate cancer.

We observed no association between *NAT1* polymorphism and prostate cancer susceptibility. Controversial results have been reported regarding the role of *NAT1* and *NAT2* in the susceptibility to prostate cancer [10,25,26]. Previous reports presenting different results [10,27], could be explained by the geographic difference between populations, since the frequencies of *NAT1* and *NAT2* polymorphisms differ greatly with ethnical characteristics [8]. In our results, the *NAT2* slow acetylase genotypes, *NAT2*6/NAT2*6*, was significantly associated with prostate cancer ($P=0.030$; OR = 0.32, 95% CI 0.12–0.89). It is well known that this slow acetylase genotype presents a lower enzyme activity than rapid genotypes [28]. Individuals that present this genotype show a lower capacity of metabolizing carcinogens. Many *N*-hydroxy heterocyclic

amines, carcinogens are metabolically activated to a great extent by *NAT2* [6,29], and these carcinogens seem to be of potential carcinogenicity to human prostate epithelial cells [5,17]. Therefore, carriers of *NAT2*6/NAT2*6* genotype have a lower capacity to activate carcinogens. This is consistent with the protective effect of *NAT2*6/NAT2*6* genotype to prostate cancer that we reported in our study. Furthermore, we found that *NAT2*6/NAT2*6* genotype is over-represented in the group of prostate cancer patients with PSA levels lower than 10 mg/ml in comparison with patients with PSA levels higher than 10 mg/ml. This reinforces a role for *NAT2*6/NAT2*6* genotype in the prostate cancer biology.

Several reports have shown the contribution of genetic polymorphisms to the risk of prostate cancer [30–35]. Our study brings new reports that may help to clarify the function of *NAT* polymorphisms in prostate cancer development. Our results suggest a role of *NAT2* polymorphisms in the carcinogenic pathway of prostate cancer in a population of Southern Europe. Future studies concerning the association of *NAT* genotypes and environmental or lifestyle factors (e.g., diet) will be important to elucidate the real meaning of *NAT* polymorphisms in the susceptibility to prostate cancer.

ACKNOWLEDGMENTS

The authors thank the Liga Portuguesa Contra o Cancro—Centro Regional do Norte (Portuguese

League Against Cancer), for their support. We also thank Dr. Carlos Torres and Dr. Isabel Torres for their helpful assistance in the management of normal controls.

REFERENCES

- Pinheiro PS, Tycznski JE, Bray F, Amado J, Matos E, Parkin DM. Cancer incidence and mortality in Portugal. *Eur J Cancer* 2003; 39:2507–2520.
- Hanchette CL, Schwartz GG. Geographic patterns of prostate cancer mortality. Evidence for a protective effect of ultraviolet radiation. *Cancer* 1992;70:2861–2869.
- Rodriguez C, Tatham LM, Thun MJ, Calle EE, Heath CW Jr. Smoking and fatal prostate cancer in a large cohort of adult men. *Am J Epidemiol* 1997;145:466–475.
- Kolonel LN. Fat, meat, and prostate cancer. *Epidemiol Rev* 2001;23:72–81.
- Wang CY, Debiec-Rychter M, Schut HA, Morse P, Jones RF, Archer C, King CM, Haas GP. *N*-acetyltransferase expression and DNA binding of *N*-hydroxyheterocyclic amines in human prostate epithelium. *Carcinogenesis* 1999;20:1591–1595.
- Hein DW, Doll MA, Rustan TD, Gray K, Feng Y, Ferguson RJ, Grant DM. Metabolic activation and deactivation of arylamine carcinogens by recombinant human NAT1 and polymorphic NAT2 acetyltransferases. *Carcinogenesis* 1993;14:1633–1638.
- Blum M, Grant DM, McBride W, Heim M, Meyer UA. Human arylamine *N*-acetyltransferase genes: Isolation, chromosomal localization, and functional expression. *DNA Cell Biol* 1990; 9:193–203.
- Butcher NJ, Boukouvala S, Sim E, Minchin RF. Pharmacogenetics of the arylamine *N*-acetyltransferases. *Pharmacogenomics J* 2002; 2:30–42.
- Garte S, Gaspari L, Alexandrie AK, Ambrosone C, Autrup H, Autrup JL, Baranova H, Bathum L, Benhamou S, Boffetta P, Bouchardy C, Breskvar K, Brockmoller J, Cascorbi I, Clapper ML, Coutelle C, Daly A, Dell'Omo M, Dolzan V, Dresler CM, Fryer A, Haugen A, Hein DW, Hildesheim A, Hirvonen A, Hsieh LL, Ingelman-Sundberg M, Kalina I, Kang D, Kihara M, Kiyohara C, Kremers P, Lazarus P, Le Marchand L, Lechner MC, van Lieshout EM, London S, Manni JJ, Maugard CM, Morita S, Nazar-Stewart V, Noda K, Oda Y, Parl FF, Pastorelli R, Persson I, Peters WH, Rannug A, Rebbeck T, Risch A, Roelandt L, Romkes M, Ryberg D, Salagovic J, Schoket B, Seidegard J, Shields PG, Sim E, Sinnet D, Strange RC, Stucker I, Sugimura H, To-Figueras J, Vineis P, Yu MC, Taioli E. Metabolic gene polymorphism frequencies in control populations. *Cancer Epidemiol Biomarkers Prev* 2001;10:1239–1248.
- Hein DW, Leff MA, Ishibe N, Sinha R, Frazier HA, Doll MA, Xiao GH, Weinrich MC, Caporaso NE. Association of prostate cancer with rapid *N*-acetyltransferase 1 (NAT1*10) in combination with slow *N*-acetyltransferase 2 acetyltransferase genotypes in a pilot case-control study. *Environ Mol Mutagen* 2002;40:161–167.
- Hou SM, Ryberg D, Falt S, Deverill A, Tefre T, Borresen AL, Haugen A, Lambert B. GSTM1 and NAT2 polymorphisms in operable and non-operable lung cancer patients. *Carcinogenesis* 2000;21:49–54.
- van der Hel OL, Peeters PH, Hein DW, Doll MA, Grobbee DE, Kromhout D, Bueno de Mesquita HB. NAT2 slow acetylation and GSTM1 null genotypes may increase postmenopausal breast cancer risk in long-term smoking women. *Pharmacogenetics* 2003;13:399–407.
- Costa S, Medeiros R, Vasconcelos A, Pinto D, Lopes C. A slow acetyltransferase genotype associated with an increased risk of advanced cervical cancer. *J Cancer Res Clin Oncol* 2002;128: 678–682.
- Hung RJ, Boffetta P, Brennan P, Malaveille C, Hautefeuille A, Donato F, Gelatti U, Spaliviero M, Placidi D, Carta A, Scotto dC, Porru S. GST, NAT, SULT1A1, CYP1B1 genetic polymorphisms, interactions with environmental exposures and bladder cancer risk in a high-risk population. *Int J Cancer* 2004;110: 598–604.
- Brockton N, Little J, Sharp L, Cotton SC. *N*-acetyltransferase polymorphisms and colorectal cancer: A HuGE review. *Am J Epidemiol* 2000;151:846–861.
- Payton MA, Sim E. Genotyping human arylamine *N*-acetyltransferase type 1 (NAT1): The identification of two novel allelic variants. *Biochem Pharmacol* 1998;55:361–366.
- Lawson T, Kolar C. Human prostate epithelial cells metabolize chemicals of dietary origin to mutagens. *Cancer Lett* 2002;175: 141–146.
- Mullenbach R, Lagoda PJ, Welter C. An efficient salt-chloroform extraction of DNA from blood and tissues. *Trends Genet* 1989; 5:391.
- Bell DA, Badawi AF, Lang NP, Ilett KF, Kadlubar FF, Hirvonen A. Polymorphism in the *N*-acetyltransferase 1 (NAT1) polyadenylation signal: Association of NAT1*10 allele with higher *N*-acetylation activity in bladder and colon tissue. *Cancer Res* 1995;55:5226–5229.
- Gonzalez MV, Alvarez V, Pello MF, Menendez MJ, Suarez C, Coto E. Genetic polymorphism of *N*-acetyltransferase-2, glutathione S-transferase-M1, and cytochromes P450IIE1 and P450IID6 in the susceptibility to head and neck cancer. *J Clin Pathol* 1998;51:294–298.
- Pienta KJ, Esper PS. Risk factors for prostate cancer. *Ann Intern Med* 1993;118:793–803.
- Ross RK, Henderson BE. Do diet and androgens alter prostate cancer risk via a common etiologic pathway? *J Natl Cancer Inst* 1994;86:252–254.
- King CM, Land SJ, Jones RF, Debiec-Rychter M, Lee MS, Wang CY. Role of acetyltransferases in the metabolism and carcinogenicity of aromatic amines. *Mutat Res* 1997;376:123–128.
- Xu J, Zheng SL, Hawkins GA, Faith DA, Kelly B, Isaacs SD, Wiley KE, Chang B, Ewing CM, Bujnovszky P, Carpten JD, Bleecker ER, Walsh PC, Trent JM, Meyers DA, Isaacs WB. Linkage and association studies of prostate cancer susceptibility: Evidence for linkage at 8p22-23. *Am J Hum Genet* 2001;69: 341–350.
- Wadelius M, Autrup JL, Stubbins MJ, Andersson SO, Johansson JE, Wadelius C, Wolf CR, Autrup H, Rane A. Polymorphisms in NAT2, CYP2D6, CYP2C19 and GSTP1 and their association with prostate cancer. *Pharmacogenetics* 1999;9:333–340.
- Hamasaki T, Inatomi H, Katoh T, Aono H, Ikuyama T, Muratani T, Matsumoto T. *N*-acetyltransferase-2 gene polymorphism as a possible biomarker for prostate cancer in Japanese men. *Int J Urol* 2003;10:167–173.
- Fukutome K, Watanabe M, Shiraiishi T, Murata M, Uemura H, Kubota Y, Kawamura J, Ito H, Yatani R. *N*-acetyltransferase 1 genetic polymorphism influences the risk of prostate cancer development. *Cancer Lett* 1999;136:83–87.
- Cascorbi I, Drakoulis N, Brockmoller J, Maurer A, Sperling K, Roots I. Arylamine *N*-acetyltransferase (NAT2) mutations and their allelic linkage in unrelated Caucasian individuals:

- Correlation with phenotypic activity. *Am J Hum Genet* 1995;57: 581–592.
29. Hein DW, Rustan TD, Ferguson RJ, Doll MA, Gray K. Metabolic activation of aromatic and heterocyclic *N*-hydroxyarylamines by wild-type and mutant recombinant human NAT1 and NAT2 acetyltransferases. *Arch Toxicol* 1994;68:129–133.
 30. Medeiros R, Morais A, Vasconcelos A, Costa S, Pinto D, Oliveira J, Lopes C. The role of vitamin D receptor gene polymorphisms in the susceptibility to prostate cancer of a southern European population. *J Hum Genet* 2002;47:413–418.
 31. Medeiros R, Morais A, Vasconcelos A, Costa S, Pinto D, Oliveira J, Lopes C. Endothelial nitric oxide synthase gene polymorphisms and genetic susceptibility to prostate cancer. *Eur J Cancer Prev* 2002;11:343–350.
 32. Medeiros R, Morais A, Vasconcelos A, Costa S, Pinto D, Oliveira J, Carvalho R, Lopes C. Linkage between polymorphisms in the prostate specific antigen ARE1 gene region, prostate cancer risk, and circulating tumor cells. *Prostate* 2002;53: 88–94.
 33. Ferreira PM, Medeiros R, Vasconcelos A, Costa S, Pinto D, Morais A, Oliveira J, Lopes C. Association between CYP2E1 polymorphisms and susceptibility to prostate cancer. *Eur J Cancer Prev* 2003;12:205–211.
 34. Medeiros R, Vasconcelos A, Costa S, Pinto D, Ferreira P, Lobo F, Morais A, Oliveira J, Lopes C. Metabolic susceptibility genes and prostate cancer risk in a southern European population: The role of glutathione S-transferases GSTM1, GSTM3, and GSTT1 genetic polymorphisms. *Prostate* 2004;58:414–420.
 35. Ribeiro R, Vasconcelos A, Costa S, Pinto D, Morais A, Oliveira J, Lobo F, Lopes C, Medeiros R. Overexpressing leptin genetic polymorphism (–2548 G/A) is associated with susceptibility to prostate cancer and risk of advanced disease. *Prostate* 2004; 59:268–274.