



UvA-DARE (Digital Academic Repository)

Multiproxy analysis of permafrost preserved faeces provides an unprecedented insight into the diets and habitats of extinct and extant megafauna

Polling, M.; ter Schure, A.T.M.; van Geel, B.; van Bokhoven, T.; Boessenkool, S.; MacKay, G.; Langeveld, B.W.; Ariza, M.; van der Plicht, H.; Protopopov, A.V.; Tikhonov, A.; de Boer, H.; Gravendeel, B.

DOI

[10.1016/j.quascirev.2021.107084](https://doi.org/10.1016/j.quascirev.2021.107084)

Publication date

2021

Document Version

Final published version

Published in

Quaternary Science Reviews

License

CC BY

[Link to publication](#)

Citation for published version (APA):

Polling, M., ter Schure, A. T. M., van Geel, B., van Bokhoven, T., Boessenkool, S., MacKay, G., Langeveld, B. W., Ariza, M., van der Plicht, H., Protopopov, A. V., Tikhonov, A., de Boer, H., & Gravendeel, B. (2021). Multiproxy analysis of permafrost preserved faeces provides an unprecedented insight into the diets and habitats of extinct and extant megafauna. *Quaternary Science Reviews*, 267, [107084]. <https://doi.org/10.1016/j.quascirev.2021.107084>

General rights

It is not permitted to download or to forward/distribute the text or part of it without the consent of the author(s) and/or copyright holder(s), other than for strictly personal, individual use, unless the work is under an open content license (like Creative Commons).

Disclaimer/Complaints regulations

If you believe that digital publication of certain material infringes any of your rights or (privacy) interests, please let the Library know, stating your reasons. In case of a legitimate complaint, the Library will make the material inaccessible and/or remove it from the website. Please Ask the Library: <https://uba.uva.nl/en/contact>, or a letter to: Library of the University of Amsterdam, Secretariat, Singel 425, 1012 WP Amsterdam, The Netherlands. You will be contacted as soon as possible.

UvA-DARE is a service provided by the library of the University of Amsterdam (<https://dare.uva.nl>)



Multiproxy analysis of permafrost preserved faeces provides an unprecedented insight into the diets and habitats of extinct and extant megafauna

Marcel Polling^{a, b, *}, Anneke T.M. ter Schure^c, Bas van Geel^d, Tom van Bokhoven^a,
Sanne Boessenkool^c, Glen MacKay^e, Bram W. Langeveld^f, María Ariza^b,
Hans van der Plicht^g, Albert V. Protopopov^h, Alexei Tikhonovⁱ, Hugo de Boer^{a, b},
Barbara Gravendeel^{a, j}

^a Naturalis Biodiversity Center, Leiden, the Netherlands

^b Natural History Museum, University of Oslo, Norway

^c Centre for Ecological and Evolutionary Synthesis, Department of Biosciences, University of Oslo, Norway

^d Institute for Biodiversity and Ecosystem Dynamics, University of Amsterdam, the Netherlands

^e Prince of Wales Northern Heritage Centre, Yellowknife, Northwest Territories, Canada

^f Natural History Museum Rotterdam, Rotterdam, the Netherlands

^g Groningen University, Center for Isotope Research, Groningen, the Netherlands

^h Academy of the Sciences of the Sakha Republic, Yakutsk, Russia

ⁱ Zoological Institute, Russian Academy of Sciences, Saint-Petersburg, Russia

^j Institute for Water and Wetland Research, Radboud University, Nijmegen, the Netherlands

ARTICLE INFO

Article history:

Received 11 May 2021

Received in revised form

5 July 2021

Accepted 6 July 2021

Available online xxx

Handling Editor: Donatella Magri

Keywords:

Diet

DNA metabarcoding

Faecal samples

nrITS

Paleoecology

Plant macrofossils

Pleistocene

Pollen

Proxy comparison

trnL

ABSTRACT

The study of faecal samples to reconstruct the diets and habitats of extinct megafauna has traditionally relied on pollen and macrofossil analysis. DNA metabarcoding has emerged as a valuable tool to complement and refine these proxies. While published studies have compared the results of these three proxies for sediments, this comparison is currently lacking for permafrost preserved mammal faeces. Moreover, most metabarcoding studies have focused on a single plant-specific DNA marker region. In this study, we target both the commonly used chloroplast *trnL* P6 loop as well as nuclear ribosomal ITS (nrITS). The latter can increase taxonomic resolution of plant identifications but requires DNA to be relatively well preserved because of the target length (~300–500 bp). We compare DNA results to pollen and macrofossil analyses from permafrost and ice-preserved faeces of Pleistocene and Holocene megafauna. Samples include woolly mammoth, horse, steppe bison as well as Holocene and extant caribou. Most plant identifications were found using DNA, likely because the studied faeces contained many vegetative remains that could not be identified using macrofossils or pollen. Several taxa were, however, identified to lower taxonomic levels uniquely with macrofossil and pollen analysis. The nrITS marker provides species level taxonomic resolution for commonly encountered plant families that are hard to distinguish using the other proxies (e.g. Asteraceae, Cyperaceae and Poaceae). Integrating the results from all proxies, we are able to accurately reconstruct known diets and habitats of the extant caribou. Applying this approach to the extinct mammals, we find that the Holocene horse and steppe bison were not strict grazers but mixed feeders living in a marshy wetland environment. The mammoths showed highly varying diets from different non-analogous habitats. This confirms the presence of a mosaic of habitats in the Pleistocene ‘mammoth steppe’ that mammoths could fully exploit due to their flexibility in food choice.

© 2021 The Authors. Published by Elsevier Ltd. This is an open access article under the CC BY license (<http://creativecommons.org/licenses/by/4.0/>).

1. Introduction

During much of the Late Pleistocene epoch, Siberia, Alaska and

* Corresponding author. Naturalis Biodiversity Center, Leiden, the Netherlands.
E-mail address: marcelpolling@gmail.com (M. Polling).

northern Canada were connected, forming a dry and largely treeless landmass known as Beringia (Hopkins, 1959; Hopkins et al., 1982). The landscape was dominated by emblematic megafauna such as woolly mammoths and steppe bison, and in terms of biomass some authors have compared this period to the current African savannah (Zimov et al., 2012). Mammals had a major role in shaping vegetation community and structure by reducing vegetation density, enhancing nutrient turnover, dispersing seeds and reducing fire potential (Guthrie, 2001; Hester et al., 2006; Johnson, 2009). Reconstructing the species composition of this former plant community without a modern analogue, as well as the corresponding diets of the mammals that roamed it has been challenging.

According to Guthrie (1990) there were mainly open landscapes with highly productive graminoids and *Artemisia* sp. in a steppe-tundra biome that is often designated the 'mammoth steppe'. Recent studies have changed the view of the mammoth steppe vegetation into a more heterogeneous mosaic of different habitats. This mosaic consisted of areas rich in shrubs combined with permanent moist areas and productive grasslands (Chytrý et al., 2019; Lozhkin et al., 2019; Zazula et al., 2006). Willerslev et al. (2014) further showed that forbs (non-graminoid herbaceous vascular plants) were more abundant in the environment than previously thought, and featured in megafaunal diets to provide important proteins. Relatively little is known, however, about the specific plant species in megafaunal diets.

The shift in appreciation of the Beringian megafaunal habitats has been catalysed by a growing body of research that uses a multidisciplinary approach, combining pollen and plant macrofossils with DNA metabarcoding (Boast et al., 2018; Gravendeel et al., 2014; Haarsma et al., 2016; Hofreiter et al., 2000; Sønstebo et al., 2010; van Geel et al., 2008, 2011a, 2011b; Van Geel et al., 2014; Willerslev et al., 2014). By improving taxonomic resolution and finding complementary taxa, DNA metabarcoding can help to resolve vegetation classifications where species resolution is required (e.g. steppe and tundra, partly defined on distinct species of grass; Swanson, 2006). Several studies on lake sediments have shown that instead of replacing traditional methods, DNA metabarcoding acts as a complementary proxy by revealing both additional taxa and providing increased taxonomic resolution (see e.g. Boessenkool et al., 2014; Parducci et al., 2019; Pedersen et al., 2013; Rawlence et al., 2014). While pollen grains mostly show a regional signal due to dominant wind-dispersed pollen (grasses and *Artemisia* sp.), DNA may represent a more local signal that is more similar to the spectrum of macrofossil taxa (Alsos et al., 2018; Boessenkool et al., 2014; Jorgensen et al., 2012).

While the studies cited above provide a good overview of the advantages and drawbacks of the different proxies used, all of these studies focussed on lake sediments. So far, there are few studies comparing these proxies in megafaunal faecal samples (e.g. Gravendeel et al., 2014; Hofreiter et al., 2003; van Geel et al., 2008). Strictly speaking, the faecal samples of extinct megafauna are not coprolites since they are not fossilized but perfectly preserved in permafrost. However, the plant macrofossils in these samples are drastically affected by masticatory and digestive processes, which may result in differential preservation of taxa and fragments becoming unidentifiable (van Geel et al., 2008). For pollen recovered from faeces an additional complicating factor is that the faecal samples are often dominated by wind-transported pollen or pollen deriving from ingestion of inflorescences from plants that were flowering at the time of consumption (Van Geel et al., 2014). The advantage of DNA as a proxy for dietary reconstruction is that it does not depend on flowering time or time of fruit setting, as vegetative plant remains are included in the DNA record (Willerslev et al., 2014). However, as in ancient sediments, not all taxa are

recorded using DNA metabarcoding due to incomplete reference libraries, PCR bias, primer mismatches and DNA degradation (Jorgensen et al., 2012).

Most studies of ancient DNA from sediments have relied either on the P6 loop of the chloroplast *trnL* (UAA) intron or the *rbcl* gene, and both give good taxonomic resolution for some plant taxa but limited for others (Sønstebo et al., 2010; Taberlet et al., 2006). While in the animal kingdom the mitochondrial marker COI can be used as a universal barcode for identifying species (Hebert et al., 2003) no such universal barcode has been identified for plants. For this reason a combination of markers has been advised for plants, including both a nuclear marker and a plastid marker (CBOL Plant Working Group et al., 2011). Since permafrost acts as an excellent natural freezer, even long DNA fragments (up to 510 bp) have been recovered from sediments as old as 400 kyr (Lydolph et al., 2005; Willerslev et al., 2014). Yet in the study of ancient megafaunal faeces, the relatively long nuclear ribosomal ITS has rarely been used, and only to amplify relatively short amplicons (e.g. 240 bp in the Cape Blossom mammoth; van Geel et al., 2011b). Due to its length, nrITS has the advantage of being able to provide a higher taxonomic resolution, which in turn can give better insight into the palaeoenvironmental conditions represented by the taxa in a sample.

In this study, we aim to 1) investigate the potential of using the nrITS marker on megafaunal faeces, 2) compare the nrITS results to *trnL*, pollen and macrofossil records and 3) integrate results of all proxies to obtain a detailed reconstruction of ancient megafaunal diets and habitats. To this end, we applied DNA metabarcoding, pollen and macrofossil analysis on a variety of permafrost and ice-preserved faecal samples from extinct and extant megafauna, specifically woolly mammoth, steppe bison, horse and caribou. In addition to the *trnL* P6 loop, we target the nrITS regions nrITS1 and nrITS2. The wide temporal range of the samples (28,000 to modern) further allows us to capture potential taphonomic effects on the recovery of the different marker regions and read counts, while inclusion of faecal samples from extant caribou with known diets and habitats enables validation of the diet and habitat reconstructions of the extinct megafauna.

2. Materials and methods

2.1. Material

Eleven faecal samples from four mammal species were included (Table 1; for detailed information about location and dating see Table S1). Several of the samples we used here have been studied previously and DNA from the original material - which was stored at -80°C - was re-extracted and analysed here, except for the Oyogas Yar horse and Yakutian bison of which DNA extracts from previous studies were used (CTAB DNA extraction; Doyle and Doyle, 1987). All samples are derived from Russia, Canada and USA (Fig. 1) and are briefly discussed below.

2.1.1. Holocene and modern mountain caribou

Three northern mountain caribou (*Rangifer tarandus caribou* (Gmelin, 1788)) faecal samples were collected from cores in ice patch deposits in the Selwyn Mountains, Northwest Territories, Canada. Caribou visit these ice patches during the summer months to escape summer heat and insect harassment and their faeces are subsequently buried by snow creating stratigraphically discrete faecal bands that are very well preserved. The samples include faeces from modern caribou collected from the surface near the ice patch (Selwyn A), and two samples of late Holocene age collected from the ice core, Selwyn B and Selwyn C. From Selwyn A, DNA was retrieved by Galloway et al. (2012) confirming that caribou was

Table 1

Overview of the samples used in this study including the existing and newly generated data, source of material and their age and collection locality. References from where the existing data was taken are [1] Galloway et al. (2012) [2] Boeskorov et al. (2014) [3] Gravendeel et al. (2014) [4] Van Geel et al. (2014) [5] van Geel et al. (2011b) [6] van Geel et al. (2008) [7] Harington and Eggleston-Stott (1996). *D = DNA, M = plant macrofossils, P = pollen. †DNA extract from previous study used.

Species	Name	Reference	Existing data*	Newly generated data*	Material	measured ¹⁴ C age BP	Locality
Caribou	Selwyn A (KfTe-1 surface)	[1]	P	D M	Faeces from ice patch	modern	Selwyn Mountains, NT, Canada
Caribou	Selwyn B (KfTe-1-C2-1)	[1]	M P	D	Faeces from ice patch	1,630 ± 40	Selwyn Mountains, NT, Canada
Caribou	Selwyn C (KfTe-1-C1-3)	[1]	M P	D	Faeces from ice patch	2,840 ± 40	Selwyn Mountains, NT, Canada
Horse	Oyogas Yar	[2,3]	D M P	D †	Faeces from colon	4,630 ± 35	N Sakha, Ust-Yana region, Russia
Bison	Yakutian	[2,4]	D M P	D †	Rumen	9,310 ± 45 9,295 ± 45	N Sakha, Chukchalakh Lake, Yana Mammoth reserve
Woolly mammoth	Cape Blossom	[5]	D M P	D	Faeces	12,300 ± 70	Kotzebue Sound, NW Alaska, USA
Woolly mammoth	Yukagir	[6]	D M P	D	Faeces from colon	18,680 ± 100	N Sakha, oxbow lake near Maxunuokha River, Russia
Woolly mammoth	Adycha	This study	—	D M P	Faeces	21,250 ± 100	N Sakha, Adycha River floodplain, Russia
Horse	Yukon	[7]	D M	D P	Faeces from intestine	26,280 ± 210	Last Chance Creek near Dawson City, Yukon, Canada
Woolly mammoth	Abyland	This study	—	D M P	Faeces	28,460 ± 160	N Sakha, Oguruoha River, Abyysky District, Russia
Woolly mammoth	Maly Lyakhovsky	This study	—	D M P	Faeces from stomach	28,610 ± 110	N Sakha, Maly Lyakhovsky Island, Russia

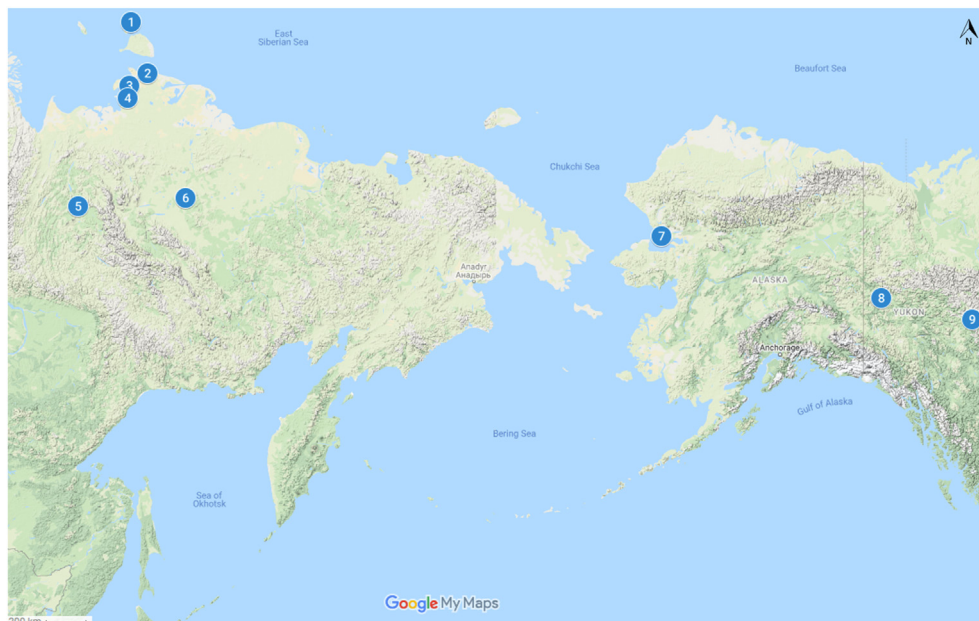


Fig. 1. Sample localities. (1) Maly Lyakhovsky mammoth, (2) Oyogas Yar horse, (3) Yakutian bison, (4) Yukagir mammoth, (5) Adycha mammoth, (6) Abyland mammoth, (7) Cape Blossom mammoth (8) Yukon horse and (9) Selwyn caribou A, B and C.

indeed the producer of the faeces. For the other samples, the faecal material was identified as being deposited by caribou based on the general shape, size and texture of the pellets, without additional DNA confirmation.

2.1.2. Holocene bison and horse

A colon sample of a horse (Oyogas Yar or Yukagir horse; *Equus cf. lenensis* Russanov, 1968) of middle Holocene age and a rumen sample of a Yakutian steppe bison (*Bison priscus* (Bojanus, 1825)) of early Holocene age were taken directly from permafrost preserved animals from the Sakha Republic, Russia (Boeskorov et al., 2014; Gravendeel et al., 2014; Van Geel et al., 2014) (Table 1). The Oyogas Yar horse was identified as being most closely related to the extinct

Lena horse, *Equus lenensis*, based on body size measurements (Boeskorov et al., 2018).

2.1.3. Pleistocene mammoth and horse

Six Pleistocene faecal samples were analysed, including five woolly mammoths (*Mammuthus primigenius* (Blumenbach, 1799)) and one Yukon horse (*Equus lambei* (Hay, 1917)). Four specimens were obtained from the republic of Sakha (Yakutia), Russia, including the Maly Lyakhovsky, Abyland, Adycha and Yukagir mammoths. The Cape Blossom mammoth sample (or Alaskan Late Glacial mammoth) was obtained from Cape Blossom, Alaska, USA, and the Yukon horse was obtained from Dawson City, Yukon, Canada. Faecal samples were taken directly from, or in close vicinity

to the permafrost preserved animals, except for the Abyland, Adycha and Cape Blossom samples which were loose faeces. Validation of the faeces as being derived from woolly mammoth for the Yukagir, Maly Lyakhovsky, Cape Blossom and Yukon samples is based on previous studies (Grigoriev et al., 2017; Harington and Eggleston-Stott, 1996; van Geel et al., 2008, 2011b). The identities of the Adycha and Abyland samples were confirmed using Sanger DNA analyses (Supplementary Text S2).

2.2. Radiocarbon dating

Radiocarbon dates of the caribou, horse, bison and Cape Blossom and Yukagir mammoth faeces were reported in previous publications (Boeskorov et al., 2014; Galloway et al., 2012; Gravendeel et al., 2014; Harington and Eggleston-Stott, 1996; van Geel et al., 2008, 2011b). The faecal samples of the Adycha, Abyland and Maly Lyakhovsky mammoths were dated at the AMS facility of the Center for Isotope Research of the University of Groningen (The Netherlands). The ^{14}C ages are reported in BP, the conventional unit, and includes a correction for isotope fractionation and a defined half-life (Van der Plicht and Hogg, 2006). The ^{14}C dates are calibrated into calendar ages using the presently recommended calibration curve IntCal20 (Reimer et al., 2020). The calibrated dates are reported in cal. BP, defined as calendar years relative to AD 1950 (Table S1).

2.3. Pollen and macrofossils

If available, pollen and macrofossil results were taken directly from published records (Table 1). Data was available for the Yukagir and Cape Blossom mammoths, the Yakutian bison, Oyogas Yar horse and two of the Selwyn caribou samples (Galloway et al., 2012; Gravendeel et al., 2014; van Geel et al., 2008, 2011b; Van Geel et al., 2014). For Selwyn caribou A, only a pollen analysis was available (Galloway et al., 2012). If multiple counts were present from different subsamples, these were averaged to obtain one pollen count per sample. Macrofossil results for the Yukon horse were generated by Paleotec Services, Canada. This sample was previously studied for its plant DNA using *trnL* by Willerslev et al. (2014).

Pollen and spores (hereafter 'pollen') counts and macrofossil analysis were performed for the faeces of the Abyland, Adycha and Maly Lyakhovsky mammoths, Yukon horse (only pollen) and Selwyn caribou A (only macrofossil). The method for pollen preparation followed Faegri and Iversen (1989). Samples for pollen and macrofossil analyses were taken from the core of the faeces. Microscopic analysis of pollen was done at 400X and 1000X magnification. Pollen identifications were based on Moore et al. (1991) and Beug (2004) and a pollen reference collection. For the preparation of macrofossils, Mauquoy and Van Geel (2007) was followed. Bryophyte specimens were identified using Lawton (1971), Crum et al. (1981) and Vitt and Buck (1992).

In pollen analysis, the use of 'types' is common to denote a group of taxa that produce pollen that cannot be identified to a lower taxonomic level using microscopic analysis. *Potentilla*-type pollen for example includes pollen from species of the genera *Potentilla*, *Comarum*, *Fragaria* and *Sibbaldia* (Reitsma, 1966), which are all part of the subtribe Fragariinae of the Rosaceae family. All 'type' identifications were therefore converted to their corresponding maximum taxonomic level so as to better compare them to the DNA and macrofossil data. Similarly, the commonly used Asteraceae pollen subdivision Tubuliflorae and Liguliflorae were converted to Asteraceae subfamilies Asteroideae and Cichorioideae, respectively.

2.4. Molecular analysis: DNA extractions and primer selection

2.4.1. Molecular analysis: DNA extractions

All pre-PCR aDNA work (including subsampling) took place in the dedicated ancient DNA laboratory of Naturalis Biodiversity Center (Leiden, The Netherlands). We subsampled the faecal samples following recommendations of Cooper and Poinar (2000) and Wood and Wilmshurst (2016). Samples were UVC-irradiated for 5 min and the outer layer (± 2 mm) removed with a clean scalpel. This process was repeated before taking three subsamples (± 100 mg each) from the middle of the bisected samples.

The subsamples were ground in a Retsch CryoMill at -196 °C, before DNA was extracted separately for each subsample following the silica-based extraction protocol of Rohland and Hofreiter (2007), adjusted to the smaller volume of material used as described in Stech et al. (2011). DNA extracts from the three subsamples were then pooled together. To control cross-contamination, DNA extractions were carried out in batches of two to three samples with one extraction blank (excluding faecal material) included in each batch (in total five extraction blanks).

2.4.2. Molecular analysis: primer selection and DNA amplification

Amplification of chloroplast DNA was done using *trnL* intron P6 loop *g* and *h* primers (Taberlet et al., 2006) (Table S3). Nuclear ribosomal Internal Transcribed Spacer regions were amplified using plant-specific primer pairs for nrITS1 (ITS-p5/ITS-u2; Cheng et al., 2016) and nrITS2 (ITS-p3/ITS4; Cheng et al., 2016; White et al., 1990) as well as fungi-specific primer pair for nrITS2 (fITS7/ITS4; Ihrmark et al., 2012; White et al., 1990) to control for amplification of non-target DNA (Table S3).

A dual-indexing approach was applied using a set of unique primer-adaptor combinations as described in Fadrosch et al. (2014). All DNA extracts were diluted 1:10, except for the Abyland and Cape Blossom mammoths, for which a 1:50 dilution was used. PCRs were carried out on a Bio-Rad C1000 Touch or Bio-Rad S1000 thermal cycler in 25 μl final volumes consisting of 15.4 μl nuclease-free ultrapure water, 1x Phire Green reaction buffer, 0.52 μM of each primer, 1.25 mM of dNTPs, 1 U Phire Hot Start II DNA Polymerase and 1 μl of the 1:10 or 1:50 diluted DNA sample template. Gradient PCR results were used to determine the optimum annealing temperature for each primer set. The following amplification protocol was used: a 30 s activation step at 98 °C, 40 cycles including 5 s at 98 °C, 5 s annealing at 55–60 °C (depending on primers used; Table S3) and 15 s elongation at 72 °C, plus a final extension step at 72 °C for 5 min.

In order to mitigate stochasticity of DNA results, three PCR replicates were used for all samples using a unique tag combination for each replicate. *Coelogyne fimbriata* (Orchidaceae), native to tropical SE Asia, was used as a positive control for each primer set. The resulting PCR products were pooled into two pools based on amplicon length: a pool containing the shorter *trnL* fragments and a pool containing the longer nrITS fragments. Equimolar pools were made after measuring DNA concentrations on a QIAxcel (Qiagen). The pools were purified using Agencourt AMPure XP beads (Beckman Coulter), with a 1:0.9 (nrITS) or 1:1 (*trnL*) ratio and quantified using an Agilent 2100 Bioanalyzer DNA High sensitivity chip. Illumina adapters were ligated onto the amplicons using TruSeq DNA Nano Library Preparation kit (Illumina, USA) and subsequently sequenced at the Norwegian Sequencing Center on an Illumina MiSeq v2 300 cycles (150 bp x 2) for the *trnL* fragments and an Illumina MiSeq v3 600 cycles (300 bp x 2) for the nrITS fragments.

2.5. Molecular analysis: DNA sequence analysis and filtering

2.5.1. Mammal DNA identification

The mitochondrial Sanger sequencing reads obtained from the Abyland and Adycha faeces were aligned and trimmed using Bio-Edit version 7.2.5 (Supplementary Text S2; Hall, 1999). A MegaBLAST search was performed to check the resulting consensus sequences against the NCBI nucleotide database, and only sequences resulting in percentage ID > 98% were kept.

2.5.2. nrITS sequences

The three pools of nrITS sequences (plant nrITS1 and nrITS2, fungal nrITS2) were analysed separately with a custom pipeline on the OpenStack environment of Naturalis Biodiversity Center through a Galaxy instance (Afgan et al., 2018). Paired-end reads were first merged with PEAR (Zhang et al., 2014) using the standard settings and discarding non-merged reads. Amplicons were subsequently demultiplexed using the linked adapters option in Cutadapt version 2.8 (Martin, 2011). Only sequences containing both unique sample tags and forward and reverse primers were kept. Primer sequences were subsequently removed from the sequences with Cutadapt, allowing a maximum error rate of 0.15 (i.e. 3 to 4 bases).

The sequences were quality filtered and trimmed using the PRINSEQ sequence filter/converter tool (Schmieder and Edwards, 2011), using a minimum mean quality score of 20 and removing any sequences shorter than 150 bp. Sequences were dereplicated and sorted by size in VSEARCH v2.14.2 (Rognes et al., 2016) and clustered into Operational Taxonomic Units (OTUs) using the unoise3 algorithm from USEARCH v11.0.667 (Edgar, 2016) with default settings, removing singletons and potential chimeras. OTUs were subsequently identified using a MegaBLAST search against the NCBI Genbank nucleotide database for plant nrITS1 and nrITS2 (Benson et al., 2012), and the UNITE fungal nucleotide database for fungal nrITS2 (Nilsson et al., 2019). OTUs that matched at least 80% in coverage as well as identity to NCBI Genbank were kept. For final taxon identifications, a minimum of 80% identity recognition for family, 90% identity for genus and 97% for the species level was used. Sequences were further filtered in R (version 3.5.2) (R Core Team, 2013) to remove sequences with a lower number of reads from any of the samples than in negative controls (either extraction or PCR). This resulted in removal of suspected food contaminants including *Pisum sativum*, *Brassica rapa/napus* for nrITS1 and *Citrus* sp., *Cucumis sativus* and *Musa* sp. for plant nrITS2. For plant nrITS1 and nrITS2, the positive control was successfully amplified and the presence of *Coelogyne fimbriata* reads in the non-control samples was used to determine an OTU filtering threshold to correct for potential leakage. For nrITS2, this resulted in reduction of each sequence read count per replicate with 0.3%, while this value was 0.35% for nrITS1 and fungal nrITS2 (see Table S5.1 for full steps and read counts). Remaining replicates were merged while averaging the read counts per OTU. Finally, OTUs at species or genus level with the same taxonomic assignment were aggregated.

A curated arctic and boreal vascular plant and bryophyte database exists for *trnL* (see below), but not yet for nrITS. The plant nrITS results have therefore been carefully checked for their presence in the geographical areas where the faeces were collected. To this end, the Panarctic Flora (Elven et al., 2011), database of vascular plants of Canada (VASCAN) (Brouillet et al., 2010), GBIF (www.gbif.org) and the Plants of the World Online (POWO, 2019) were used (Boufford et al., 2016; Brouillet et al., 2010; Cody, 2000). This resulted in some aberrant records, such as non-boreal/tropical plants (e.g. *Celtis* sp. and *Pteroceltis* sp.) as well as some likely food contaminants (e.g. *Allium cepa*, *Lagenaria siceraria*) and these were manually removed (Supplementary Information S4). When

many blast hits from different species with an equal BIT-score were found, the top 20 blast hits were manually checked for likely boreal species. When several species met this criterion, the last common ancestor of these hits was chosen. Fungal OTUs were assigned to functional groups (guilds) using FUNGuild (Nguyen et al., 2016).

2.5.3. *TrnL* sequences

The *trnL* sequences were analysed with the OBITools package (Boyer et al., 2016). OBITools is commonly used in ancient plant DNA studies with *trnL* as it allows direct assignment of sequences to taxa. The forward and reverse reads were assembled using *illumina-pairedend* (min quality score of 40) and subsequently assigned to the corresponding samples using *ngsfilter* (only keeping sequences with a 100% tag match and allowing for a maximum of three mismatches with the primers). Using *obiuniq*, strictly identical sequences were merged, after which *obigrep* was used to remove singletons, sequences with ambiguous nucleotides and sequences shorter than 10 bp. Following Bellemain et al. (2013), *obiclean* was used to identify sequencing and amplification errors with a threshold ratio of 5% for reclassification of sequences identified as 'internal' to their corresponding 'head' sequence. The resulting sequences were compared to two taxonomic databases using *ecotag*. The first priority was given to a local taxonomic reference library containing arctic and boreal vascular plant taxa and bryophytes (arctboryo database; Soininen et al., 2015; Sønstebo et al., 2010; Willerslev et al., 2014). A second reference library based on the global EMBL database (release 137) was used for mitigation of missing taxonomic assignment due to species potentially lacking in the first database (see Table S5.2 for full steps and read counts). The computations were performed on resources provided by UNINETT Sigma2 - the National Infrastructure for High Performance Computing and Data Storage in Norway.

The resulting sequences were further filtered in R to remove sequences that had (a) < 100% identity match to the reference libraries, (b) < 10 reads per PCR repeat and (c) sequences with higher number of reads in negative controls compared to the samples. This process resulted in the removal of suspected contaminant sequences derived from modern food plants such as *Solanum* subgenus *Lycopersicon* and *Oryza* sp. as well as some potential true positives including the genera *Solidago*, *Trifolium* and *Helictiochloa*. No *Coelogyne fimbriata* reads were recorded in the positive control for *trnL*, despite the presence of *C. fimbriata* sequences in the NCBI Genbank database (e.g. MK356212.1). The presence of *C. fimbriata* reads in the non-control samples to determine the MOTU filtering threshold (as was used for nrITS filtering) could therefore not be used. Instead, the maximum number of reads from the most abundant OTU (*Salix* sp.) in control samples was used, and accordingly each sequence read count per replicate was reduced with 1.0%. Remaining replicates were merged while averaging the read counts per OTU. Finally, OTUs at species or genus level with the same taxonomic assignment were aggregated.

Although this filtering resulted in losing potential true positives, these were only present in a low number of reads (<0.1% of the total number of reads). Furthermore, this relatively rigorous filtering allowed for removal of nearly all suspected false positives in the samples, and this was given preference over retaining as many true positives as possible (cf. Alsos et al., 2018). Remaining identifications were manually checked for suspected contaminants or taxa that were known not to occur in the arctic and boreal region. This process resulted in the removal of a few remaining suspected contaminants (Supplementary Information S4). This is a common problem in metabarcoding studies, and the taxa we identify are similar to those found in other studies (Chua et al., 2021; Van Geel et al., 2014; Willerslev et al., 2014).

2.6. Diet analysis and habitat types

The DNA reads were converted to relative read abundances to facilitate comparison with macrofossil and pollen data. When referring to 'diet' in this study from now on, we refer to the composition of the last meal consumed by the animals studied here, as inferred through the multiproxy approach on the faecal samples. The taxon identifications were grouped into the major groups of graminoids (grasses, sedges, rushes), forbs, shrubs/deciduous trees, coniferous trees, mosses and lichens. Since pollen records are biased towards high pollen producers and show primarily a regional signal (Jorgensen et al., 2012), they cannot be used to reliably reconstruct the diet. The record of macrofossils is strongly influenced by the food choice of the animal during its last meal (Mol et al., 2006) and has been shown to largely overlap with aDNA results (Parducci et al., 2015). Therefore, to provide a visual representation of the last diets, the average values of the relative abundance of the macrofossil results and all available DNA results were taken.

Plant identifications from DNA, macrofossils and pollen that could be assigned to the species level were used to reconstruct the habitat types of the megafaunal last diets. Some genera that are typically found in specific habitats have also been included (e.g. *Eriophorum*, *Juncus* in wetlands and *Puccinellia* in saline meadows). Habitat types were identified using a combination of sources: efloras (Brach and Song, 2006), Kienast et al. (2005), Troeva et al. (2010), Janská et al. (2017), Axmanová et al. (2020) and references therein. Only the presence of taxa and not their abundance was used to reconstruct the habitats, since abundance of certain taxa is highly affected by the selective food choice of the animals and may not reflect the palaeovegetation (Ashastina et al., 2018). The taxa were divided into 13 habitat types, ranging from relatively dry (steppe) to very wet (wetland: marsh, bog, fen, swamp). The modern known habitat preferences for the plant species were used, and the resulting habitat types are compared to modern analogues. For the modern caribou (Selwyn caribou A), the habitat consists of boreal forest in low-elevation areas, found together with arctic-alpine tundra at high altitudes (Galloway et al., 2012).

3. Results

3.1. Mammal sample identity

Genetic analyses confirmed the identity of both the Abyland and Adycha samples as *Mammuthus primigenius* (woolly mammoth), with a 100% match in both cover and identity (Table S2). This was further supported by the shape and size of the faecal pellets.

3.2. Pollen and macrofossil recovery

3.2.1. Pollen

For seven mammals, the pollen records were taken from the published records while four were newly generated in this study (Tables S6.1 – S6.11). The Selwyn caribou samples studied by Galloway et al. (2012) showed a mixed pollen signal with trees (ranging from 25 to 30%, *Picea* sp., *Pinus* sp., *Alnus* sp. etc.) and forbs (34–40%, mostly *Artemisia* sp.) being the most abundant. Selwyn caribou A further showed 33% shrubs (*Salix* sp. and *Betula* sp.) which were missing in Selwyn B, and rare (6%) in Selwyn C. Low amounts (<10%) of undifferentiated Poaceae as well as insect-dispersed pollen (e.g. Asteraceae, Ericaceae, *Polemonium* sp. and Rosaceae) were identified in all three caribou samples.

The Holocene Yakutian bison and Oyogas Yar horse had high amounts of undifferentiated Poaceae pollen (71% and 92%, respectively; Gravendeel et al., 2014; Van Geel et al., 2014).

Cyperaceae was the second most abundant pollen type (4%) in the horse and also accounted for 6% in the bison sample. The bison further had a relatively high amount (9%) of Apiaceae pollen. Other pollen in both samples was derived from various shrubs (*Betula* sp. and *Salix* sp.) and forbs (e.g. Asteraceae, Plantaginaceae, Rosaceae). Tree-derived pollen (*Abies* sp., *Pinus* sp. and *Alnus* sp.) was present in both samples and made up 3–4% of the total.

The previously studied Yukagir and Cape Blossom mammoths showed abundant wind-dispersed pollen types consisting of Poaceae (both ~70%) and *Artemisia* sp. (16% and 7%, respectively; van Geel et al., 2008; van Geel et al., 2011b). The newly obtained pollen results from the three Pleistocene mammoths (Abyland, Adycha, Maly Lyakhovsky) as well as the Yukon horse were also dominated by Poaceae and *Artemisia* sp. (>85%). The only sample with a low *Artemisia* count (1%) was the Maly Lyakhovsky mammoth, which was for 97% dominated by Poaceae. Insect-dispersed pollen types were rare to very rare in all Pleistocene samples and were derived from many different families, e.g. Apiaceae, Brassicaceae, Caryophyllaceae and Papaveraceae. The only sample with coniferous tree derived pollen was the Adycha mammoth with 1% *Pinus* sp. pollen.

3.2.2. Macrofossils

Macrofossil analyses were taken from published records for eight samples and newly generated for three mammoths (Maly Lyakhovsky, Abyland and Adycha) as well as for Selwyn caribou A (Table S6.1 – S6.11). The macrofossils of the three Selwyn caribou samples showed a mixture of shrubs (genera *Betula* and *Salix*), lichen and mosses as the most dominant taxa, with grasses and forbs (e.g. Asteraceae, Caryophyllaceae) making up the remainder (Galloway et al., 2012). Selwyn C showed 44% lichen fragments.

The Yakutian bison faecal sample was dominated by vegetative remains of Poaceae and Cyperaceae (50%), wetland forbs (e.g. *Comarum palustre* and *Menyanthes trifoliata*) as well as *Salix* sp. and minor moss fragments (Van Geel et al., 2014). The Oyogas Yar horse sample was dominated by unidentified Cyperaceae remains and minor remains of Poaceae and several moss fragments (Gravendeel et al., 2014).

The previously studied macrofossils of the Yukagir mammoth faecal sample showed abundant poaceous remains together with *Salix* sp. and *Carex* sp. (van Geel et al., 2008). The herbaceous component was made up of plant remains from varying families, e.g. Asteraceae, Brassicaceae, Caryophyllaceae, Papaveraceae. Remains from several mosses were also identified, including *Drepanocladus aduncus*, *Bryum* sp., *Entodon concinnus*. The Cape Blossom mammoth macrofossils consisted of over 90% *Carex* sp., followed by Poaceae and a herbaceous component consisting of e.g. *Minuartia rubella*, *Potentilla* sp. and *Cerastium/Silene* sp. (van Geel et al., 2011b). Graminoids dominated the newly obtained data of the three mammoths Abyland, Adycha and Maly Lyakhovsky. This included poaceous vegetative remains, in the case of Abyland combined with one *Carex* sp. fruit and for Maly Lyakhovsky with the remains of a variety of mosses (e.g. *Campylium stellatum*, *Cinclidium stygium*, *Drepanocladus* sp., *Warnstorfia sarmentosa*).

3.3. DNA

Illumina sequencing resulted in 20.4 M read pairs for *trnL* and 16.4 M read pairs for nrITS. After quality filtering and clustering, 11.7 M reads were retained for *trnL*, 2.1 M reads for plant nrITS1, 2.2 M reads for plant nrITS2 and 5.0 M reads for fungal nrITS2. *TrnL* and fungal nrITS2 was successfully amplified in all samples while plant nrITS1 and nrITS2 was obtained for all but the Yukon horse, Cape Blossom mammoth and Selwyn caribou C.

The plant specific primers for the nrITS marker effectively

amplified plant taxa, where 63.4% (nrITS1) and 70.4% (nrITS2) of the total OTUs were assigned to green plants (Figure S15). Of the total OTUs, 3.8% and 7.3% were assigned to fungi, respectively. The remainder of the OTUs comprised green algae (Chlorophyta) and made up 6.6% of the total OTUs for nrITS1 and 19.4% for nrITS2. Across all samples, *trnL* produced 167 green plant OTUs, while 73 and 71 green plant OTUs were identified using plant nrITS1 and nrITS2, respectively (Tables S7 - S12). Per sample, *trnL* showed the highest number of green plant OTUs with on average 35.2 (range 12–74), while nrITS1 recovered on average 10.8 green plant OTUs (0–28) and nrITS2 12.5 (0–40) (Table S16). For the fungal nrITS2, 88.2% of the total OTUs were assigned to Fungi, 11.6% to Viridiplantae and 0.2% was unidentified, while showing on average 20.2 fungal OTUs per sample (range 7–38; Tables S16). Read or OTUs counts were not correlated to the age of the samples for any of the markers.

3.4. Comparison of pollen, macrofossils and DNA data

Across DNA, pollen and macrofossil datasets, 311 plant taxa including 146 species, 150 genera and 63 families were identified (Fig. 2; see Table S6.1–S6.11 for full recovered plant taxa information across all samples). With pollen analysis, 65 plant taxa were identified, while 84 plant and 5 lichen macrofossil taxa were found. DNA analysis resulted in 146 (*trnL*), 73 (nrITS1) and 71 (nrITS2) plant taxa. At all taxonomic levels, DNA analysis recovered the most unique plant taxa, with 16 families, 77 genera and 123 species (Fig. 2). However, unique taxa were also identified using both macrofossil (four families, 18 genera and 15 species) and pollen analysis (six families, 11 genera and one species). No species were recorded across all three proxies, while six genera (*Androsace*, *Artemisia*, *Betula*, *Papaver*, *Rumex* and *Salix*) and 14 families were shared in the DNA, macrofossil and pollen data. The biggest overlap of proxies was found between DNA and macrofossil results at the genus level (29 genera), while there was little overlap between the pollen and macrofossil results (three genera and two families).

Pollen and macrofossils could be identified to species level in 3.1% and 24.7% of the recovered taxa, respectively. For the DNA markers, 44.8% of the OTUs were identified to species level for *trnL*, while this was 70.9% and 78.2% for nrITS1 and nrITS2, respectively (Table S7, S9, S11). To illustrate the differences in taxonomic resolution between the three proxies as well as between the DNA markers, results of three plant families (Poaceae, Asteraceae and Cyperaceae) that were common to abundant in all 11 faecal

samples are shown in Table 2. Taxa from these three families were found using all three proxies. For plant families where pollen could only be identified to the family level, macrofossils could in several cases be identified to genera within those families, and in rare cases to species level (e.g., *Carex nardina* and *Carex dioica* in the Cyperaceae family). The nrITS marker could identify species for taxa where *trnL* results were only identifiable to genus or family level. An example of this is the identification of the species *Arctagrostis latifolia* (100% identity) and *Calamagrostis stricta* (99.7%; Poaceae) using nrITS1, while *trnL* identification was only possible to the subtribe level (Agrostidinae). Similarly, where *trnL* identified Asteraceae subfamily Anthemideae, the nrITS marker found the species *Artemisia scoparia* and *A. norvegica* (both 100% identity). Unique Poaceae species (*Koeleria asiatica*, *Festuca kolymensis*) and Asteraceae species and genera (*Artemisia gmelinii*, *Arnica*, *Saussurea*) were, however, also found using *trnL* and this pattern was found throughout the whole dataset (Table 2 and Table S7).

3.5. Diet analysis

High congruence between the quantitative results of the different DNA markers was found for the Selwyn A and B caribou samples, with a dominance of shrubs (87–98%; *Salix*, *Betula* and various ericaceous taxa) and low abundance of forbs, graminoids and mosses (Fig. 3a). In contrast, the macrofossil results indicated high abundance of mosses, graminoids and lichen with only low amounts of shrubs. The combined diet reconstruction - based on DNA and macrofossils only - showed ~75% shrubs with 10–15% mosses (Fig. 3b). Fungal nrITS2 results further identified low amounts of lichen, including *Cladonia* spp., *Bryocaulon divergens* and *Stereocaulon saxatile* (Table S13 – S14) that may have formed part of the caribou diet (0.3% of total fungal reads for Selwyn B and 0.1% for Selwyn A). For Selwyn caribou C, *trnL* showed a much higher amount of forbs (72%; mainly Asteraceae tribe Anthemideae and *Sibbaldia procumbens*) than the macrofossils (8%) or pollen (34%). The reconstructed diet differed from the other two caribou samples, consisting of 40% forbs and equal parts (15–20%) of shrubs (*Salix*), lichen and mosses.

Macrofossils of the Oyogas Yar horse were for >95% dominated by graminoids and this was also reflected in the *trnL* (85%) and nrITS1 (69%) data (mainly *Eriophorum* sp. and *Dupontia fisheri* respectively). The plant nrITS2 results, however, were dominated by mosses (73%). The diet reconstruction showed a dominance of graminoids (65%) with 20% mosses and equal amounts of shrubs

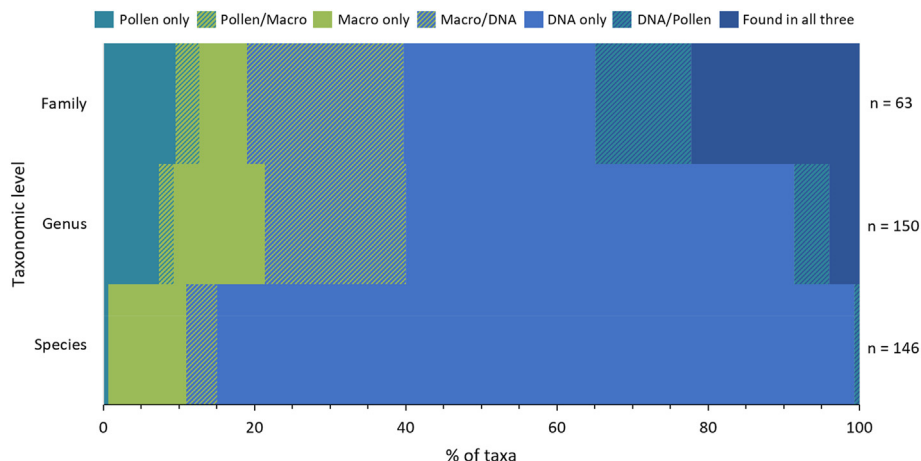


Fig. 2. Percentage of identified plant taxa per proxy (pollen, macrofossil, DNA) at different taxonomic levels across all faecal samples studied here. Hatched areas represent overlap between two proxies. n = total number of taxa that was found in each specific taxonomic level.

Table 2

All taxa recorded of three plant families (Poaceae, Asteraceae and Cyperaceae) that were common to abundant in all 11 faecal samples in DNA (trnL, nrITS1 and nrITS2), macrofossils and pollen analyses. The numbers represent the number of samples in which that specific taxon was found.

Family (subfamily)	Tribe	Subtribe	Genus (subgenus)	Species	trnL	nrITS1	nrITS2	Macro	Pollen
Poaceae								11	11
Pooideae	Bromeae		<i>Bromus</i>		4				
				<i>B. pumpellianus</i>	5				
	Hordeae	Hordeinae	<i>Elymus</i>					1	
			<i>Hordeum</i>		3			1	
	Meliceae		<i>Glyceria</i>					1	
			<i>Pleuropogon</i>	<i>P. sabinei</i>	2				
	Poeae				6				
		<i>incertae sedis</i>		<i>A. fulva/D. fisheri</i>	2				
			<i>Arctophila</i>	<i>A. fulva</i>			4		
			<i>Dupontia</i>	<i>D. fisheri</i>		4	1		
		Agrostidinae			5				
			<i>Arctagrostis</i>					2	
				<i>A. latifolia</i>		1	3		
			<i>Calamagrostis</i>			3	2		
				<i>C. stricta</i>		1			
		Alopecurinae	<i>Alopecurus</i>					1	
				<i>A. magellanicus</i>		3	2		
		Aristaveninae	<i>Deschampsia</i>	<i>D. cespitosa</i>		3	3		
		Aveninae	<i>Koeleria</i>	<i>K. asiatica</i>	2				
		Coleanthinae	<i>Puccinellia</i>		2	2	1		
				<i>P. tenuiflora/vahliana</i>			2		
				<i>P. vahliana</i>		2			
		Loliinae	<i>Festuca</i>					2	
				<i>F. altaica</i>	3	1			
				<i>F. kolymensis</i>	3				
				<i>F. ovina</i>		1	2		
		Phalaridinae	<i>Hierochloe</i>					2	
		Poinae	<i>Poa</i>			1		3	
				<i>P. arctica</i>			4		
				<i>P. glauca</i>		2			
		Triticeae			4				
Asteraceae					3				
Asteroideae								1	10
	Anthemideae				6				
		Anthemidinae	<i>Tripleurospermum</i>	<i>T. maritimum</i>	1				
		Artemisiinae			4				
			<i>Artemisia</i>					2	11
				<i>A. gmelinii</i>	5				
				<i>A. norvegica</i>		2	1		
				<i>A. scoparia</i>		2	3		
	Astereae				3				
	Gnaphalieae				2				
			<i>Antennaria</i>					1	
	Madieae	Arnicinae	<i>Arnica</i>		2				
	Senecioneae	Tussilaginatae	<i>Endocellion</i>	<i>E. sibiricum</i>		1	2		
			<i>Tephrosieris</i>		1				
Carduoideae	Cardueae								2
		Carduinae	<i>Saussurea</i>		3				
Cichorioideae									5
Cyperaceae								4	10
Cyperoideae	Cariceae		<i>Carex</i>		5			6	
			<i>Carex</i> subg. <i>Carex</i>		1				
				<i>C. aquatilis</i>	3	2	2		
				<i>C. microchaeta</i>	2				
				<i>C. nigra</i> subsp. <i>juncea</i>		5			
				<i>C. podocarpa</i>		1			
				<i>C. rostrata</i>		2	1		
				<i>C. vesicaria</i>		1	1		
			<i>Carex</i> subg. <i>Euthyceras</i>		1			1	
				<i>C. nardina</i>				1	
			<i>Carex</i> subg. <i>Vignea</i>		3				
				<i>C. chordorrhiza</i>		1			
				<i>C. dioica</i>				1	
				<i>C. duriuscula</i>		1	1		
				<i>C. lachenalii</i>	1				
				<i>C. maritima</i>	2				
	Scirpeae		<i>Eriophorum</i>		3	1		3	
				<i>E. angustifolium</i>		3	3		

and forbs (8%). The diet of the other, much older, Yukon horse contained a lower fraction of graminoids (28%) and, instead, was dominated by forbs (on average 60%; consisting of *Braya rosea* and Asteraceae tribe Anthemideae). Tree and shrub taxa were only identified in the macrofossil results for this sample. The Yakutian bison sample consisted on average of 48% forbs (mainly *Cicuta virosa*) and 25% each of graminoids (*Eriophorum*, *Carex*) and shrubs (*Salix*). The Adycha and Maly Lyakhovsky mammoth samples showed highly similar results from both proxies and the reconstructed diets consisted almost exclusively of graminoids (Fig. 3b). Graminoids in the Adycha sample consisted for >75% of *Puccinellia* sp. based on DNA analysis, while many species of Poaceae (including abundant *Deschampsia cespitosa* and *Alopecurus magellanicus*), as well as *Carex* sp. and *Eriophorum* sp. were found in the Maly Lyakhovsky sample. Mosses were found to be relatively abundant in this sample according to nrITS2 results (33%; mainly *Polytrichastrum alpinum*), while much lower percentages of mosses were found in nrITS1, *trnL* or macrofossil results.

The three other mammoth samples showed a higher contribution of forbs to their diet, often with the DNA results of the different markers showing one species dominating the assemblage. For the Abyland mammoth this dominant species was *Anemone patens*, while in the Yukagir mammoth sample *Myosotis alpestris* was abundant. The Yukagir mammoth was the only one of the mammoth samples showing relatively abundant (on average 34%) shrubs (*Salix*) in its diet. In the Cape Blossom mammoth, graminoids made up >75% of macrofossils, while the *trnL* results showed 28% graminoids, consisting mainly of *Carex*. In the *trnL* results forbs were abundant (71%) and consisted for the largest part of *Chamaenerion angustifolium* and Asteraceae tribe Anthemideae.

3.6. Habitat types

We combined species and genus-level plant identifications from all proxy results to reconstruct the habitats in which the last meals of the studied megafauna were consumed (Fig. 4; Table S17 for all plant species information).

Identified plant species in the Selwyn caribou A and B samples provided a range of habitats including wetland, woods and a large component of arctic-alpine tundra (e.g. *Arctous alpina*, *Anemone richardsonii*, *Carex podocarpa* and *Pyrola grandiflora*) along with taxa typical for mountainous/rocky habitats (e.g. *Rhodiola integrifolia*). The Selwyn caribou C sample similarly contained many species typical for arctic-alpine tundra but also included a large component of species typical for snow patches (e.g. *Ranunculus nivalis*, *Ranunculus pygmaeus*, *Oxyria digyna*).

The reconstructed habitats of the Holocene Oyogas Yar horse and Yakutian bison consisted mainly of wetlands, including marshes and river/lake sides. For the Oyogas Yar horse this included *Eriophorum* sp., *Caltha palustris* and *Comarum palustre* typical for marshes and e.g. *Arctagrostis latifolia* and *Arctophila fulva/Dupontia fisheri* from water sides. The Yakutian bison showed numerous *Carex* species, *Menyanthes trifoliata*, *Epilobium palustre* and *Hippuris* sp., all indicative of marshy wetland conditions as well as e.g. *Endocellion sibiricum* and *Epilobium palustre* typically found along rivers or ponds.

The Cape Blossom and Maly Lyakhovsky mammoth samples also included wetland components, with in the case of Cape Blossom e.g. *Caltha palustris* and species of *Carex* and for Maly Lyakhovsky *Eriophorum* sp., *Caltha palustris* as well as several grass species (*Pleuropogon sabinei*, *Arctophila fulva*). Moss species in the Maly Lyakhovsky mammoth further provided evidence of a wet, marshy environment (e.g. *Drepanocladus sordidus*, *Cratoneuron filicinum*, *Warnstorfia sarmentosa* and *Dicranum bonjeanii*). However, in contrast to the Holocene horse and bison, both these mammoth

samples also included species indicative for dry meadows and, in the case of Cape Blossom, steppe (*Festuca kolymensis* and *Artemisia gmelinii*). Several true steppe species were also found in the Abyland mammoth (*Silene samojedorum*, *Carex duriuscula*, *Artemisia scoparia*) and Yukagir mammoth samples (e.g. *Eritrichium sericeum*, *Festuca kolymensis*, *Phlox hoodii*). Other taxa in both samples were indicative for dry meadows (e.g. *Anemone patens* and *Cerastium maximum* for Abyland and *Myosotis alpestris* and *Eremogone capillaris* for Yukagir). Furthermore for the Abyland mammoth, several species typical for wet meadows were identified (e.g. *Sanguisorba officinalis*, *Stellaria borealis*), while for the Yukagir mammoth a component of gravelly slopes and mountainous/rocky habitat was found (e.g. *Smelowskia alba*, *Oxytropis deflexa*, *Rhodiola rosea*). The Pleistocene Yukon horse also showed a last meal consisting of a mix of taxa from different habitats with species typically found in wet meadows and wetlands (*Alnus incana*, *Juncus alpinoarticulatus*) as well as dry meadow and steppe (*Bromus pumpellianus*, *Artemisia gmelinii*). The habitat for the Adycha mammoth consisted of meadows (e.g. *Deschampsia cespitosa*, *Bromus pumpellianus*) as well as a large component of saline meadow (*Puccinellia* sp.).

4. Discussion

4.1. Comparison of proxies

Out of the three proxies used in the present study (DNA, pollen and macrofossils), DNA recovered the highest number of unique taxa at all taxonomic levels (Fig. 2). This is likely caused by the large amount of vegetative remains in the faecal samples that could not be identified beyond the family or genus level using macrofossil or pollen analysis. DNA analysis does not depend on the season when plants carry seed, fruit or pollen and allows identification of many taxa to the species level irrespective of their developmental stage. We also used primers for multiple marker regions (*trnL*, nrITS1, nrITS2), each identifying unique taxa and increasing overall taxonomic resolution (Tables S7 - S12).

In comparison to pollen from sediments, pollen spectra from our faecal samples were not very diverse (Jorgensen et al., 2012; Parducci et al., 2015; Pedersen et al., 2013). This could be because lake sediments accumulate pollen over a much larger spatial and temporal scale than faeces do. We took all the samples for our analyses from the middle of the faeces and thus caught only a snapshot of airborne pollen (i.e., sticking on ingested vegetation), mixed with pollen coming from ingestion of inflorescences. The taxonomic overlap between pollen and DNA, as well as between pollen and macrofossils was surprisingly low, and we instead found the highest overlap between DNA and macrofossil results. This is likely because both of these proxies are providing a local signal (showing the food choice of the animal) while the pollen analysis is influenced by accidental intake of pollen sticking to ingested vegetation as well as pollen from species producing high amounts of pollen (e.g. Jorgensen et al., 2012).

4.1.1. Metabarcoding detection gap

We use the term 'metabarcoding detection gap' here for taxa that were not retrieved in the DNA results (*trnL* or nrITS) but were present in the macrofossil and/or pollen records. In total, the metabarcoding detection gap consists of 12 families, 32 genera and 16 species (Fig. 2). Many of these taxa are very rare in the pollen or macrofossil counts, with most of them found in only one sample and in low abundance. For pollen this includes single identified spores and pollen of *Botrychium* sp. and *Populus* sp. in the Selwyn caribou samples, and *Epipactis* sp., *Persicaria* sp. and *Thalictrum* sp. in the mammoth samples. For such rare pollen grains it seems likely they were only present as pollen while being (very) rare in the

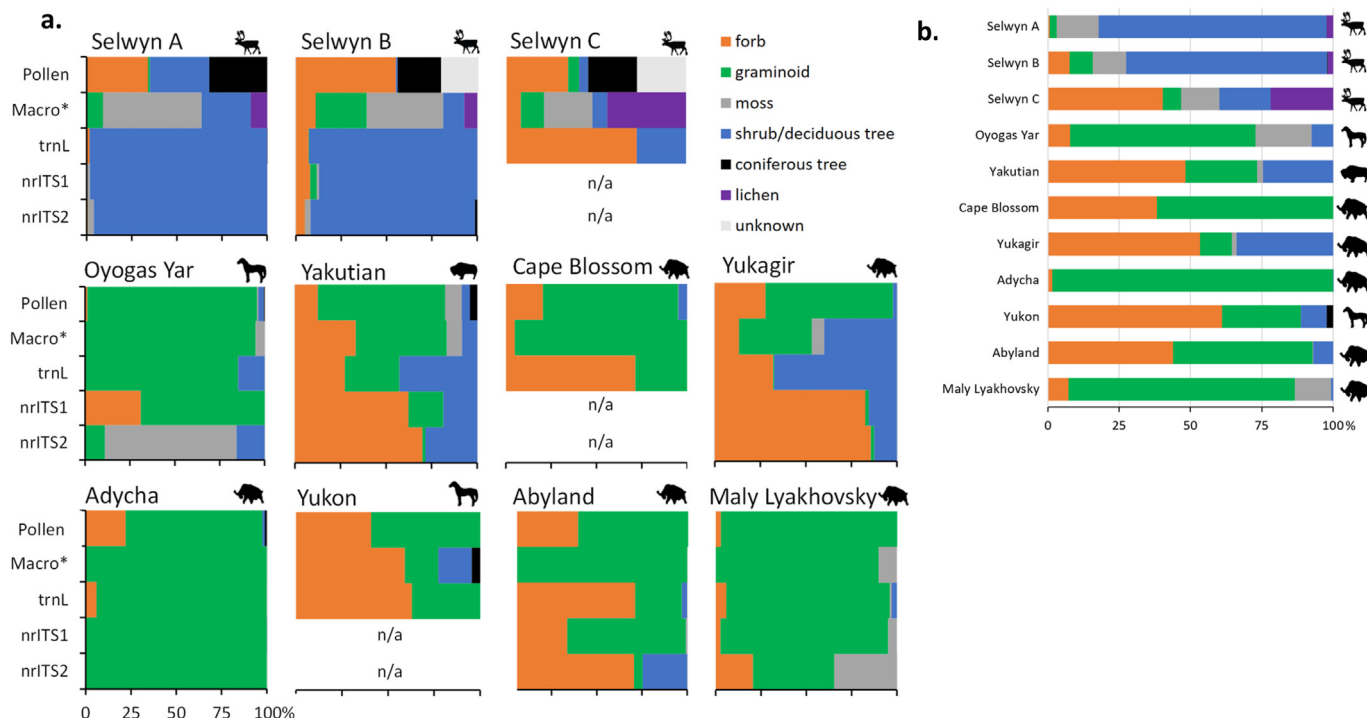


Fig. 3. Diet reconstructions based on quantitative abundance of plant groups (forbs, graminoids, mosses, shrubs/deciduous trees, coniferous trees and lichens). a) Quantitative comparison of results from the different plant proxies used for all samples in this study. * exact quantitative data from macrofossils was only present for the Selwyn caribou B and C. For all other samples, the semi-quantitative macrofossil results have been converted to quantitative measures for illustrative purposes. b) Reconstruction of the composition of the last diet by taking the average value of the relative abundance of macrofossil and all available DNA results.

consumed vegetation. A lysis step with mechanical bead beating is necessary to break the exine of pollen grains and release the inner DNA (Polling, 2021). Since these steps have not been used here, this could explain the absence of these taxa from the DNA results. On top of this, pollen contains very little DNA that is hard to amplify even if present in high numbers (Parducci et al., 2005). Similar to proxy comparison studies on lake sediments (e.g. Parducci et al., 2019), we find that DNA from pollen contributes very little to the total DNA signal in faeces.

There are also taxa that were found as pollen with high relative abundance, while being very rare or absent in the other proxies. This includes, for example, pollen of the family Pinaceae which account for up to 30% in the caribou samples. Pinaceae pollen is often overrepresented in pollen records from the (sub)Arctic because they are high pollen producers and their pollen is spread over large distances (Aario, 1940). The genus *Artemisia* reached up to 40% in some pollen records (Selwyn caribou B; Table S6.2), yet it is very rare in both DNA and macrofossil results. Unfortunately, using *trnL*, the genus *Artemisia* cannot be distinguished from other genera from the subfamily Anthemideae (*Anthemis*, *Achillea*, *Chrysanthemum*, *Tanacetum* etc.). This subfamily was relatively abundant in Selwyn caribou C, Cape Blossom mammoth and the Yukon horse, and it cannot be resolved whether these reads actually belong to *Artemisia*. Rare fragments of *Artemisia* in the macrofossil records were only recorded in the Yukon horse and Selwyn caribou C samples. Part of this discrepancy can be explained by differential preservation, since macrofossils of *Artemisia* such as seeds or fruits (achenes) deteriorate rapidly and are therefore rarely recovered (Anderson and Van Devender, 1991; Birks, 2007). Other studies on DNA metabarcoding of Pleistocene megafaunal faeces also found high amounts of *Artemisia* pollen but very low abundance with DNA or macrofossils from the same samples (e.g. Kolyma rhinoceros and Finish Creek mammoth; Willerslev et al., 2014). For caribou, where

in all three samples Pinaceae and *Artemisia* pollen is common to abundant, it is furthermore known that they do not actively select *Artemisia* and avoid Pinaceae (Denryter et al., 2017; Jung et al., 2015). These records are therefore interpreted as the results of accidental uptake of pollen sticking to selected plant taxa.

In the macrofossil data, we detected many taxa that were represented by one seed or plant fragment (e.g. *Antennaria* sp., *Draba* sp., *Sagina* sp., *Hedysarum* sp., *Lysimachia* sp.) and many of these are part of the metabarcoding detection gap. Furthermore, fragments of various mosses were exclusively found as macrofossils (e.g. *Calliergon* sp., *Plagiomnium* sp., *Rhizomnium* sp., *Thuidium* sp. and the spikemoss *Selaginella* sp.). It should be noted that DNA reference libraries are still far from complete, and this may be especially true for Arctic Russian moss species. Therefore, some of the species found as macrofossils may not be recoverable using DNA at this moment. One such example is the moss *Cinclidium stygium* for which no nrITS sequence is currently available in the NCBI Genbank. Apart from this, the expected amplicon size for bryophytes using the plant-specific nrITS primers in our study is > 500 bp (Cheng et al., 2016), which may cause some species to be missed due to the 600 bp restriction using Illumina sequencing. Furthermore, even though we applied a multi-locus approach, DNA primer mismatch in both *trnL* and nrITS could have occurred. Many *Selaginella* species for example show 5 mismatches in their DNA barcodes with the *trnL*-h as well as the ITS4 reverse primers used in this study. Lastly, DNA of plant fragments may have been simply too degraded to be amplified by any of the DNA markers.

4.1.2. Morphology detection gap

A 'morphology detection gap' is designated here as all taxa that are missing in either the pollen or macrofossil record but were found in the DNA results. In total, the morphology detection gap for the studied faecal samples consists of 16 families, 77 genera and

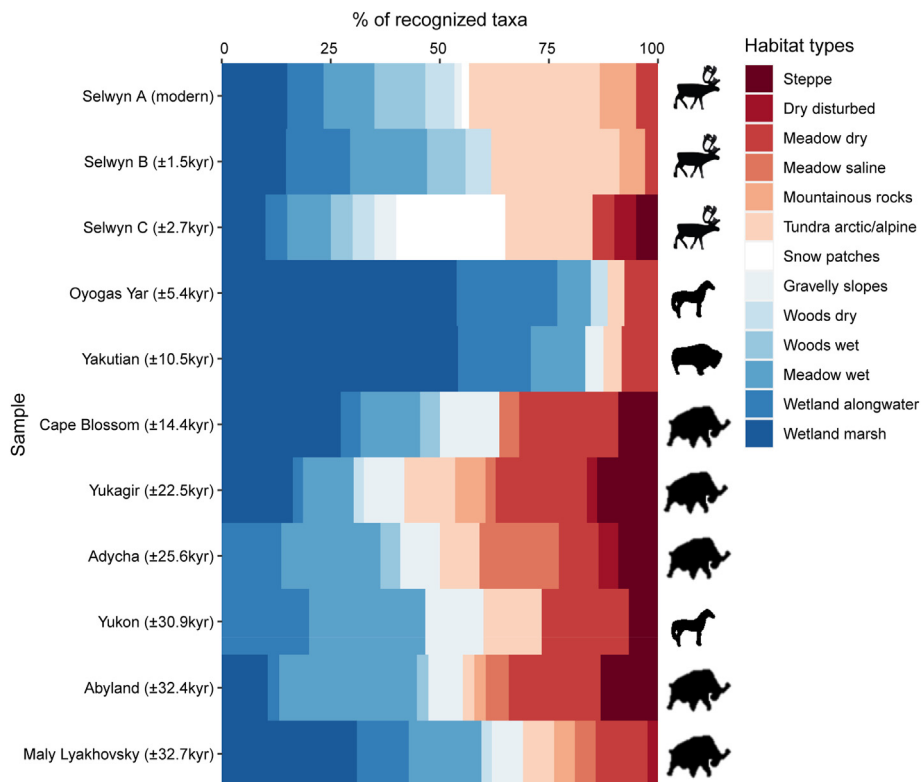


Fig. 4. Habitat reconstruction of megafaunal species based on integrated (pollen, macrofossils, DNA) species and genus resolution data. The samples were sorted according to their age and the average calibrated age of each sample is indicated between brackets.

123 species (Fig. 2). The biggest factor contributing to many of the taxa only found as DNA is the higher taxonomic resolution that is achieved using DNA (although it depends on the percentage of identity used whether taxa identified by DNA are assignable to either, e.g., genus or species level). There are, however, a number of other factors that may determine the taxa in the morphology detection gap.

First, many taxa only found with DNA were very rare (<0.1% of the relative amount of reads) and only recorded in one sample. These taxa could have either been very minor diet items or taxa that were not targeted (i.e. accidental intake), which were present in such low quantities that they may have been missed with the macrofossil or pollen analyses. Accidental intake could also explain the presence of several species in the DNA results of the caribou samples of which the ingestion of high amounts may be toxic (e.g. *Pedicularis capitata*, *Oxytropis deflexa*; Denryter et al., 2017). Secondly, some plant taxa may be more affected by the digestive processes than other plant taxa, causing them to be unrecognizable as macrofossils while still being recoverable using DNA. Lastly, despite extensive reference collections for pollen and macrofossils, identification may still be somewhat subjective with regards to morphologically very similar taxa. This is less the case for DNA using reference libraries that allow more objective identifications.

Taken together, this explains the abundance of some taxa in DNA results even though they were missing in the other proxies. One example is the willowherb family Onagraceae for which *Chamaenerion angustifolium* and *Epilobium palustre* were found in DNA of seven of the samples studied here. Rare Onagraceae pollen were only found in the Cape Blossom mammoth (van Geel et al., 2011b). Although pollen from insect-pollinated plants are always under-represented in faecal samples, we identified abundant *Chamaenerion angustifolium* in the DNA results of the Cape Blossom sample.

No macrofossil remains of Onagraceae were recorded in any of the samples, and this is likely because vegetative Onagraceae remains are very hard to recognize due to their ambiguous morphology (Anderson and Van Devender, 1991; Grímsson et al., 2012). Similarly, the forget-me-not family Boraginaceae is only recovered using DNA. It was especially abundant in the last meal of the Yukagir mammoth (*Myosotis alpestris* and *Eritrichium sericeum*). An additional species (*Mertensia paniculata*) was identified in the faecal samples of the caribou and the Cape Blossom mammoth, yet no remains of Boraginaceae were found in either pollen or macrofossil analyses of any sample. Pollen grains of members from this family are particularly small (5–7 μm) and could potentially be overlooked during analysis while vegetative macrofossil remains are hard to identify. Macrofossils of Boraginaceae and Onagraceae have not been recorded in any other mammoth faeces, even though they were recorded in high abundance in DNA data (e.g. Finish and Drevniy Creek mammoths as well as Yukagir bison; Willerslev et al., 2014). These examples show the added value of DNA analysis and indicate that vegetative plants of these families may likely have formed part of the diets of the studied megafauna.

4.1.3. Comparison of plant DNA markers

Our application of multiple DNA markers on megafaunal faecal samples reveals the added value of a multilocus approach. The three samples for which no plant nrITS results were obtained were of very different ages (± 2.7 , ± 14.4 and ± 30.9 kyr BP), while older samples did produce plant nrITS amplicons (Abyland and Maly Lyakhovsky mammoths). While nrITS amplicons were found in all samples, for the three samples where no plant OTUs were found, these were all either derived from contamination, algae or fungi. Fragments of DNA up to 500 bp have been recovered from permafrost preserved sediments as old as 400 kyr (Lydolph et al.,

2005). Therefore, it most likely depends on the conditions in which the specimens were preserved over time that determined whether or not these long fragments can be recovered. Some samples may have inadvertently been (partially) thawed at some stage, causing longer DNA fragments to be degraded, while the shorter and more stable *trnL* was not affected.

Most unique taxon identifications of the nrITS marker come from increased taxonomic resolution of several families and genera that show relatively low taxonomic resolution in the other proxies. This includes, for example, the genus *Carex* for which six unique species were found and the family Poaceae for which 11 unique species were identified with nrITS (Table 2). Furthermore, nrITS identified a larger variety of mosses than *trnL*, which is likely the result of the very short sequence length of the bryophyte P6 loop (± 22 bp) obtained using the *trnL* *g* and *h* primers. These primers were not designed for bryophytes, and the recovered length often prevents sufficient taxonomic detail (Epp et al., 2012; Soinen et al., 2015). Nevertheless, many unique plant species were found using *trnL*, which could be the result of the more complete reference libraries available for *trnL* compared to nrITS. Many nrITS reference sequences in the NCBI Genbank database do not represent the complete marker region (e.g. *Pleuropogon sabinei* and *Ranunculus nivalis* with partial nrITS2 sequences) or are simply missing altogether because no reference sequences have been deposited yet. This is, for example, seen for species in the genus *Puccinellia* where not all Russian endemics have been sequenced (missing e.g. *Puccinellia manchuriensis*, *P. byrrangensis*, *P. jennisseiensis*), and this might also explain why we find *P. vahliana* (nowadays a western Arctic species) in nrITS results. Apart from that, the shorter and more stable *trnL* P6 loop produced results for the samples that did not produce any results from nrITS, which further explains the number of unique *trnL* identifications.

4.2. Diet analysis

The diet analysis of Selwyn A and B showed that shrubs are highly dominant in the summer diets of caribou, which is in agreement with known diets of summer foraging caribou that consists of deciduous shrubs along with reindeer lichen and fungi (Bergerud, 1972; Boertje, 1984). Lichen were observed using macrofossil and fungal nrITS2 analysis, and were also indirectly detected with plant DNA by the presence of lichen phycobionts in the plant nrITS2 results (e.g. *Asterochloris*, *Symbiochloris* and *Trebouxia* spp.), only found in the Selwyn caribou samples (Table S18). *Trebouxia* is the most common phycobiont in extant lichen, while *Asterochloris* is mainly associated with lichen of the families Cladoniaceae and Sterocaulaceae (Pino-Bodas and Stenroos, 2020). Both families were also identified using fungal nrITS2 (Table S13 – S14), providing further support that the caribou ate lichen. The diet of modern caribou is well studied and for many Arctic plant species it is known whether they are either “selected”, “neutral” or “avoided” based on observations of foraging caribou (Bergerud, 1972; Denryter et al., 2017). An average diet of modern caribou was found to consist of 78% selected, 15% neutral and 7% avoided species (Denryter et al., 2017). For Selwyn A and B, “selected” plant taxa made up >85% of relative abundance of all DNA markers, while “avoided” taxa made up <5% (Table S19). This is in contrast to macrofossil results that showed up to 21% avoided taxa, mainly from mosses. Selwyn caribou C showed a large component of diet items that were of unknown (43%) and neutral diet preference (44%), with only minor (11%) selected plant taxa (Table S19). This points to a somewhat atypical summer diet for this caribou when compared to modern caribou preferences and may suggest a different vegetation composition in its habitat.

The diets of nearest living relatives for Holocene bison and horse

are well studied. While horses are typical grazers nowadays with diets consisting >75% of graminoids (Mendoza and Palmqvist, 2008), this has not always been the case. Several studies have shown that prehistoric horses had mixed grass-browse diets, especially in winter when grasses were harder to access (Kaczynski et al., 2017; MacFadden et al., 1999). The diet of the Holocene Oyogas Yar horse (*Equus* cf. *lenensis*) is typical for a grazer, with the main component being identified as graminoids. The Pleistocene Yukon horse (*Equus lambei*), however, consumed mostly forbs. The season of death could not be determined for the Oyogas Yar horse (although it could be spring to summer due to relatively high amount of Cyperaceae pollen), while for the Yukon horse it was determined as winter (Harington and Eggleston-Stott, 1996; Harington, 2002). This could explain why grasses made up only 28% of the total diet for the Yukon horse (Fig. 3b). It is likely that snow covered much of the grass cover, forcing the horse to focus on other available dietary items or that grasses were simply less abundant or of lower nutritional value (Savage and Heller, 1947).

The now extinct steppe bison (*Bison priscus*) was closely related to modern bison (*Bison bison* (Linnaeus, 1758); Marsolier-Kergoat et al., 2015). While modern bison are often thought of as grazers feeding for the majority on graminoids, their summer diets are more variable, consisting on average of 44% grass, 38% forb, 16% shrubs and <2% sedge (Leonard et al., 2017). This is similar to the DNA results of the Yakutian bison studied here, where forbs and shrubs are important components. Pollen of undifferentiated Apiaceae (identified by nrITS as *Cicuta virosa*) were also relatively abundant in this sample (9%) indicating ingestion of inflorescences. This may indicate that the Yakutian bison had its last meal in summer and was a mixed feeder that did not rely solely on grasses. The ‘warm season’ (spring/summer) was also identified as the most likely season of death for the Yakutian bison by Van Geel et al. (2014) and Boeskorov et al. (2016). The >52 kyr old bison (*Bison* sp.) studied by Willerslev et al. (2014), similarly showed a high abundance of forbs and shrubs (80%), although no season of death was identified for this sample. Lastly, the abundance of poisonous *Cicuta virosa* (water hemlock) in nrITS, and also recognized to lower taxonomic resolution in *trnL*, pollen and macrofossils, possibly indicates that the Yakutian bison died of hemlock poisoning (Jacobson, 1915).

The last meals of the Maly Lyakhovsky and Adycha mammoths consisted almost exclusively of graminoids. Some of these grasses can grow to considerable size (75–100 cm) and may have provided sufficient nutritional value for mammoths (e.g. *Bromus pumpeianus*, *Deschampsia cespitosa*, *Dupontia fisheri*). Furthermore, the genus *Puccinellia* which was identified as the main component in the Adycha mammoth last diet, includes several species that are commonly grown for hay making for cattle in modern day Yakutia, Russia (Gavril'eva, 2011). The other mammoths studied here had much lower relative amounts of graminoid DNA, or barely any in the case of the Yukagir mammoth. The last diet of the previously studied Mongochen mammoth as reconstructed using macrofossils consisted mainly of mosses, forbs and only minor grasses and shrubs while DNA results showed dominance of 98% graminoids (Kosintsev et al., 2012a; Willerslev et al., 2014). The authors suggested that the underrepresentation of graminoids in the mammoth faeces could be the result of the digestive processes breaking down the poaceous tissues, although this is not supported by our finding of graminoids being dominant in the other mammoth faeces. It does, however, hold for forbs which are underrepresented in macrofossil and pollen results as compared to our DNA data, which has also been found in previous studies (e.g., Kosintsev et al., 2012b; Willerslev et al., 2014). The last meals of the Abyland and Cape Blossom mammoths may not have consisted solely of graminoids as suggested by the macrofossil analysis, but

supplemented with *Anemone patens* (Abyland) and various other forbs, while shrubs and *Chamaenerion angustifolium* were consumed by the Cape Blossom mammoth. The abundance of *Salix* sp. and Boraginaceae (Yukagir) provides further evidence for the diversity in mammoth diets.

Another potential explanation for the differing diets may be sought in the different seasons of death, which could be determined for three of the mammoth samples studied here. The season of death of Maly Lyakhovsky mammoth was determined as late summer to early autumn (Grigoriev et al., 2017), while for both Yukagir and Cape Blossom mammoths autumn to early spring was suggested (Mol et al., 2006; van Geel et al., 2011b). A recent study on molar enamel profiles found that mammoths may have had seasonally different diets, shifting between browse and grasses (Uno et al., 2020). Also in the previously published Mongochon mammoth that died mid-summer and for which DNA, pollen and macrofossil results were analysed, the last diet was interpreted to be dominated by graminoids (Kosintsev et al., 2012a; Willerslev et al., 2014). This limited amount of data suggests that warm season diets of mammoth may have been dominated by graminoids (Maly Lyakhovsky, Mongochon), while they relied on various other food sources in the cold season (Cape Blossom, Yukagir). However, more multiproxy data is needed to support this hypothesis.

In some of the faecal samples studied here, mosses were identified in abundance either in the macrofossils (Selwyn caribou A and B) or in DNA results (nrITS2; Oyogas Yar horse and Maly Lyakhovsky mammoth) while being nearly absent in the other proxies. The relative abundance of mosses in the macrofossils of the caribou faeces is probably the result of accidental ingestion when the caribou were foraging low on the ground for dwarf shrubs and lichens. The moss species that was abundantly found with nrITS2 in the Oyogas Yar and Maly Lyakhovsky sample was *Polytrichastrum alpinum* which was detected only as rare fragments in the macrofossil remains of these samples. Potentially the primers used to amplify the nrITS2 region caused preferential amplification of this type of moss. Although abundant moss fragments have been identified in macrofossils from several mammoths (Kosintsev et al., 2012a, 2012b), and are sometimes found in caribou faeces (Denryter et al., 2017), they are unlikely to have formed a major part of the diet for any of the extinct and extant mammals studied here because of their low nutritional value.

4.3. Habitat types

The reconstructed habitat for Selwyn caribou A and B corresponds well with the known current habitat of these animals in the Selwyn Mountains in Northwest Territories, Canada. The habitat for these two samples consists of elements from both downslope boreal forest and its wetlands, along with upslope alpine tundra. It is important to note that the two most dominant diet items as identified by DNA (*Salix* and *Betula*), are not included in the habitat analysis because neither of them could be identified beyond the genus level. Species from these genera have varying habitat preferences and therefore the genus level identifications did not provide enough information to infer the habitat, the only exception being rare *Salix alaxensis* in Selwyn Caribou B which typically grows in forested habitat along streams and lakes (Boufford et al., 2016). The only *Betula* species found in the Selwyn Mountains are *B. glandulosa* (dwarf birch, shrub) and *B. papyrifera* (canoe birch, tree), with the dwarf birch being far more common (Galloway et al., 2012). The habitat reconstructed for Selwyn caribou C may indicate that the faeces in this sample was deposited by caribou that consumed a meal nearer to the ice patch.

When many megafauna species disappeared at the end of the Pleistocene, the Holocene vegetation shifted significantly to

become a more waterlogged environment with mossy and shrub-dominated tundra and deciduous forests (Edwards et al., 2005; Guthrie, 2001). The habitats reconstructed for the Holocene horse and bison reflect this mesic environment. Previous studies on these samples, however, indicated dry steppe-like conditions based on pollen and macrofossils due to the abundance of Poaceae remains (Boeskorov et al., 2016; Gravendeel et al., 2014; Van Geel et al., 2014). However, here we find that the species composition of Poaceae for both samples included *DuPontia fisheri*, *Arctophila fulva* and *Arctagrostis latifolia*, all species typical for wetland habitats. Similar to the results for the Holocene Yakutian bison, modern bison (*Bison bison*) are known to prefer sedge marshes over other habitat types (Belanger et al., 2020 and references therein). Our results show that both horse and bison are not strictly graminoid grazers, but utilize wetlands in their habitat as well. This is also confirmed by the habitat reconstructed for the Pleistocene Yukon horse studied here, that showed a mixed environment of wetland and dryer meadows and steppe. Furthermore, a recent study on dental micro- and mesowear of horse and steppe bison also found that both were likely mixed feeders, instead of obligate grazers (Kelly et al., 2021).

Mixed environments were also identified for the mammoth samples, although with varying degrees of wetland components. The oldest mammoth studied here, Maly Lyakhovsky, showed many species typical for a marshy environment. This is in contrast to the Abyland mammoth that was collected from the same geographic area (North Sakha republic, Russia) and of similar age, that showed a much larger steppe and dry meadow habitat. This relatively large steppe component was also found for the Yukagir mammoth, although for this mammoth it was mixed with many plants typically found on gravelly slopes and mountainous areas. This may indicate that mammoths may have been versatile in their diets, adapting to the various habitats that were available. This is further supported by the habitat reconstructed for the Adycha mammoth, which shows that saline meadows were present and utilized by mammoths as well. For the Cape Blossom mammoth, no nrITS results were obtained which hampers the habitat reconstruction. However, with the other proxies a habitat similar to the Maly Lyakhovsky mammoth was reconstructed, with marshy wetland and surrounding wet meadows, intermixed with steppe and dry meadow. The variety of diets obtained from different habitats supports the idea that the 'mammoth steppe' was a mosaic of habitats instead of a homogeneous vegetation type (e.g. Zazula et al., 2007). Furthermore, the specific plant species mixture identified for these mammoths is not found in any modern habitat type, pointing to non-analogue plant communities (Williams and Jackson, 2007). Our results also indicate that mammoths were not exclusively grazers, but rather opportunistic mixed-feeders.

5. Conclusions

We integrated multilocus plant DNA, macrofossil and pollen analysis to obtain detailed reconstructions of megafaunal diets and habitats. We found most plant species in faecal samples uniquely using DNA, some of which abundantly so. This could be because of the large number of vegetative plant remains in the faeces which have become unidentifiable for macrofossil analysis due to masticatory and digestive processes. Unique plant taxa were, however, also found using both macrofossil and pollen analysis. We further show that relatively long nrITS fragments can be amplified from faecal samples as old as 28,610 ¹⁴C BP and that these help to increase species resolution for many plant families (e.g. Asteraceae, Cyperaceae and Poaceae) as well as mosses that could not be retrieved using *trnL*.

We could accurately reconstruct the known diet and habitat of

modern and late Holocene caribou (i.e. abundant shrubs from an arctic alpine tundra) and extended this approach to Holocene and Pleistocene megafauna including horse, steppe bison and woolly mammoth. These reconstructions showed that the Holocene steppe bison and horse were not strict grazers but rather mixed feeders that were foraging in a marshy wetland environment. This result is in sharp contrast with previous reconstructions that suggested dry steppe-like conditions for these samples. We further find that the five Pleistocene mammoths studied here had very different last meals obtained from a variety of habitats including wetland, wet meadow, gravelly slopes, saline meadow and steppe. This confirms the presence of a mosaic of habitats in the Pleistocene landscape often referred to as the 'mammoth steppe' that mammoths could fully exploit due to a high flexibility in their diet choice.

Author contributions

Marcel Polling: Conceptualization, Data Curation, Investigation, Methodology, Visualization, Formal analysis, Writing – original draft **Anneke T.M. ter Schure:** Software, Methodology, Visualization, Formal analysis, Writing – original draft **Sanne Boessenkool:** Methodology, Visualization, Writing – Review & Editing **Bas van Geel:** Conceptualization, Validation, Resources, Writing – Review & Editing **Tom van Bokhoven:** Methodology, Investigation **Glen MacKay:** Resources, Writing – Review & Editing **Bram W. Langeveld:** Investigation, Writing Original Draft **María Ariza:** Methodology, Visualization **Hans van der Plicht:** Investigation, Writing – Review & Editing **Albert V. Protopopov:** Resources, Writing – Review & Editing **Alexei Tikhonov:** Resources, Writing – Review & Editing **Hugo de Boer:** Funding acquisition, Supervision, Writing – Review & Editing **Barbara Gravendeel:** Conceptualization, Supervision, Project administration, Funding acquisition.

Data availability

All raw read data are available at the European Nucleotide Archive (ENA) with the study accession number PRJEB44352 (sample metadata, including sample names and primer-adaptor sequences, is available in Table S20). Processed read data is available in the supporting information (Tables S7 – S14).

Declaration of competing interest

The authors declare that they have no known competing financial interests or personal relationships that could have appeared to influence the work reported in this paper.

Acknowledgements

Some of the faecal samples were kindly made available by Dick Mol, Russell Dale Guthrie and Grant Zazula. We like to thank Nathalie Van der Putten and Laurens Sparrius for their help with identifying the macrofossils of mosses and lichen, Marcel C. M. Eurlings, Bertie Joan van Heuven, Rob Langelaan and Elza Duijm for their help in the laboratory and sample handling, Audun Schrøder-Nielsen and Jarl Andreas Anmarkrud for their assistance with NGS library preparations in Oslo, Norway, Kevin Beentjes and Arjen Speksnijder for valuable comments on NGS data handling and Rune Halvorsen for his help in the data analysis. This research is part of the H2020 MSCA-ITN-ETN Plant. ID network, and has received funding from the European Union's Horizon 2020 research and innovation programme under grant agreement No 765000.

Appendix A. Supplementary data

Supplementary data to this article can be found online at <https://doi.org/10.1016/j.quascirev.2021.107084>.

References

- Aario, L., 1940. Waldgrenzen und subrezentellen pollen-spektrien in Petsamo Lapp-land. *Annales Academiae Scientiarum Fennicae, Series A* 54, 1–120.
- Afgan, E., Baker, D., Batut, B., Van Den Beek, M., Bouvier, D., Cech, M., Chilton, J., Clements, D., Coraor, N., Grüning, B.A., 2018. The Galaxy platform for accessible, reproducible and collaborative biomedical analyses: 2018 update. *Nucleic Acids Res.* 46, W537–W544.
- Alsos, I.G., Lammers, Y., Yoccoz, N.G., Jorgensen, T., Sjogren, P., Gielly, L., Edwards, M.E., 2018. Plant DNA metabarcoding of lake sediments: how does it represent the contemporary vegetation. *PLoS One* 13, e0195403.
- Anderson, R.S., Van Devender, T.R., 1991. Comparison of pollen and macrofossils in packrat (Neotoma) middens: a chronological sequence from the Waterman Mountains of southern Arizona, USA. *Rev. Palaeobot. Palynol.* 68, 1–28.
- Ashastina, K., Kuzmina, S., Rudaya, N., Troeva, E., Schoch, W.H., Römermann, C., Reinecke, J., Otte, V., Savvinov, G., Wesche, K., 2018. Woodlands and steppes: Pleistocene vegetation in Yakutia's most continental part recorded in the Batagay permafrost sequence. *Quat. Sci. Rev.* 196, 38–61.
- Axmanová, I., Robovský, J., Tichý, L., Danihelka, J., Troeva, E., Protopopov, A., Chytrý, M., 2020. Habitats of Pleistocene megaherbivores reconstructed from the frozen fauna remains. *Ecography* 43, 703–713.
- Belanger, R.J., Edwards, M.A., Carbyn, L., Nielsen, S., 2020. Evaluating trade-offs between forage, biting flies, and footing on habitat selection by wood bison (Bison bison athabasca). *Can. J. Zool.* 98, 254–261.
- Bellemain, E., Davey, M.L., Kausrud, H., Epp, L.S., Boessenkool, S., Coissac, E., Geml, J., Edwards, M., Willerslev, E., Gussarova, G., 2013. Fungal palaeodiversity revealed using high-throughput metabarcoding of ancient DNA from arctic permafrost. *Environ. Microbiol.* 15, 1176–1189.
- Benson, D.A., Cavanaugh, M., Clark, K., Karsch-Mizrachi, I., Lipman, D.J., Ostell, J., Sayers, E.W., 2012. GenBank. *Nucleic Acids Res.* 41, D36–D42.
- Bergerud, A.T., 1972. Food habits of Newfoundland caribou. *J. Wildl. Manag.* 36, 913–923.
- Beug, H.-J., 2004. Leitfaden der pollenbestimmung für Mitteleuropa und angrenzende Gebiete. Verlag Dr. Fridrich Pfeil, München.
- Birks, H.H., 2007. Plant macrofossil introduction. *Encyclopedia of quaternary science* 3, 2266–2288.
- Boast, A.P., Weyrich, L.S., Wood, J.R., Metcalf, J.L., Knight, R., Cooper, A., 2018. Coprolites reveal ecological interactions lost with the extinction of New Zealand birds. *Proc. Natl. Acad. Sci. U. S. A.* 115, 1546–1551.
- Boertje, R.D., 1984. Seasonal diets of the Denali caribou herd, Alaska. *Arctic* 161–165.
- Boeskorov, G.G., Potapova, O.R., Mashchenko, E.N., Protopopov, A.V., Kuznetsova, T.V., Agenbroad, L., Tikhonov, A.N., 2014. Preliminary analyses of the frozen mummies of mammoth (*Mammuthus primigenius*), bison (*Bison priscus*) and horse (*Equus* sp.) from the Yana-Indigirka Lowland, Yakutia, Russia. *Integr. Zool.* 9, 471–480.
- Boeskorov, G.G., Potapova, O.R., Protopopov, A.V., Plotnikov, V.V., Agenbroad, L.D., Kirikov, K.S., Pavlov, I.S., Shchelchkova, M.V., Belolyubskii, I.N., Tomshin, M.D., 2016. The Yukagir Bison: the exterior morphology of a complete frozen mummy of the extinct steppe bison, *Bison priscus* from the early Holocene of northern Yakutia, Russia. *Quat. Int.* 406, 94–110.
- Boeskorov, G.G., Potapova, O.R., Protopopov, A.V., Plotnikov, V.V., Maschenko, E.N., Shchelchkova, M.V., Petrova, E.A., Kowalczyk, R., van der Plicht, J., Tikhonov, A.N., 2018. A study of a frozen mummy of a wild horse from the Holocene of Yakutia, East Siberia, Russia. *Mammal Research* 63, 307–314.
- Boessenkool, S., McGlynn, G., Epp, L.S., Taylor, D., Pimentel, M., Gizaw, A., Nemomissa, S., Brochmann, C., Popp, M., 2014. Use of ancient sedimentary DNA as a novel conservation tool for high-altitude tropical biodiversity. *Conserv. Biol.* 28, 446–455.
- Boufford, D.E., Brouillet, L., Ford, B.A., Freeman, C.C., Gandhi, K.N., Giblin, D.E., Gillespie, L.J., Huft, M.J., Ickert-Bond, S.M., Kiger, R.W., 2016. Flora of north America. *Ann Arbor* 1001, 48108–42287.
- Boyer, F., Mercier, C., Bonin, A., Le Bras, Y., Taberlet, P., Coissac, E., 2016. obitools: a unix-inspired software package for DNA metabarcoding. *Mol. Ecol. Resour.* 16, 176–182.
- Brach, A.R., Song, H., 2006. eFloras: new directions for online floras exemplified by the Flora of China Project. *Taxon* 55, 188–192.
- Brouillet, L., Coursol, F., Meades, S., Favreau, M., Anions, M., Bélisle, P., Desmet, P., 2010. VASCAN, the Database of Vascular Plants of Canada. Accessed on November 2020. <http://data.canadensys.net/vscan/>.
- Cheng, T., Xu, C., Lei, L., Li, C., Zhang, Y., Zhou, S., 2016. Barcoding the kingdom Plantae: new PCR primers for ITS regions of plants with improved universality and specificity. *Mol. Ecol. Resour.* 16, 138–149.
- Chua, P.Y.S., Lammers, Y., Menoni, E., Ekrem, T., Bohmann, K., Boessenkool, S., Alsos, I.G., 2021. Molecular dietary analyses of western capercaillies (Tetrao urogallus) reveal a diverse diet. *bioRxiv* 2021 (2003), 434346, 2008.
- Chytrý, M., Horsák, M., Danihelka, J., Ermakov, N., German, D.A., Hájek, M., Hájková, P., Kočí, M., Kubešová, S., Lustyk, P., 2019. A modern analogue of the

- Pleistocene steppe-tundra ecosystem in southern Siberia. *Boreas* 48, 36–56.
- Cody, W.J., 2000. Flora of the Yukon Territory. NRC Research Press.
- Cooper, A., Poinar, H.N., 2000. Ancient DNA: do it right or not at all. *Science* 289, 1139–1139.
- Crum, H.A., Anderson, L.E., Anderson, L., 1981. Mosses of Eastern North America. Columbia University Press.
- Denryter, K.A., Cook, R.C., Cook, J.G., Parker, K.L., 2017. Straight from the caribou's (Rangifer tarandus) mouth: detailed observations of tame caribou reveal new insights into summer–autumn diets. *Can. J. Zool.* 95, 81–94.
- Doyle, J.J., Doyle, J.L., 1987. A Rapid DNA Isolation Procedure for Small Quantities of Fresh Leaf Tissue.
- Edgar, R.C., 2016. UNOISE2: Improved Error-Correction for Illumina 16S and ITS Amplicon Sequencing. *BioRxiv*, 081257.
- Edwards, M.E., Brubaker, L.B., Lozhkin, A.V., Anderson, P.M., 2005. Structurally novel biomes: a response to past warming in Beringia. *Ecology* 86, 1696–1703.
- Elven, R., Murray, D., Razzhivin, V., Yurtsev, B., 2011. Annotated Checklist of the Panarctic Flora (PAF) Vascular Plants. Natural History Museum, University of Oslo.
- Epp, L.S., Boessenkool, S., Bellemain, E.P., Haile, J., Esposito, A., Riaz, T., ErsÉUs, C., Gusarov, V.I., Edwards, M.E., Johnsen, A., StenØlen, H.K., Hassel, K., Kausserud, H., Yoccoz, N.G., BrÄThen, K.A., Willerslev, E., Taberlet, P., Coissac, E., Brochmann, C., 2012. New environmental metabarcodes for analysing soil DNA: potential for studying past and present ecosystems. *Mol. Ecol.* 21, 1821–1833.
- Fadrosh, D.W., Ma, B., Gajer, P., Sengamalay, N., Ott, S., Brotman, R.M., Ravel, J., 2014. An improved dual-indexing approach for multiplexed 16S rRNA gene sequencing on the Illumina MiSeq platform. *Microbiome* 2, 6.
- Faegri, K., Iversen, J., 1989. Textbook of Pollen Analysis (4th Edn by Faegri, K., Kaland, PE & Krzywinski, K.). Wiley, New York.
- Galloway, J.M., Adamczewski, J., Schock, D.M., Andrews, T.D., MacKay, G., Bowyer, V.E., Meulendyk, T., Moorman, B.J., Kutz, S.J., 2012. Diet and habitat of mountain woodland caribou inferred from dung preserved in 5000-year-old alpine ice in the Selwyn Mountains, Northwest Territories, Canada. *Arctic* 65, 59–79.
- Gavril'eva, L., 2011. Communities of the class Artemisietea jacuticae Gogoleva et al. 1987 in alas meadows of Central Yakutia. *Contemporary problems of ecology* 4, 339–345.
- Gravendeel, B., Protopopov, A., Bull, I., Duijm, E., Gill, F., Nieman, A., Rudaya, N., Tikhonov, A.N., Trofimova, S., van Reenen, G.B.A., Vos, R., Zhilich, S., van Geel, B., 2014. Multiproxy study of the last meal of a mid-Holocene Oyogos Yar horse, Sakha Republic, Russia. *Holocene* 24, 1288–1296.
- Grigoriev, S.E., Fisher, D.C., ObadÄ, T., Shirley, E.A., Rountrey, A.N., Savvinov, G.N., Garmeva, D.K., Novgorodov, G.P., Cheprasov, M.Y., Vasilev, S.E., Goncharov, A.E., Masharskiy, A., Egorova, V.E., Petrova, P.P., Egorova, E.E., Akhremenko, Y.A., van der Plicht, J., Galanin, A.A., Fedorov, S.E., Ivanov, E.V., Tikhonov, A.N., 2017. A woolly mammoth (*Mammuthus primigenius*) carcass from maly Lyakhovsky island (new siberian islands, Russian federation). *Quat. Int.* 445, 89–103.
- Grimsson, F., Zetter, R., Leng, Q., 2012. Diverse fossil Onagraceae pollen from a Miocene palynoflora of north-east China: early steps in resolving the phyto-geographic history of the family. *Plant Systemat. Evol.* 298, 671–687.
- Guthrie, R.D., 1990. Frozen Fauna of the Mammoth Steppe, vol. 323. The University of Chicago Press, pp. 111–112.
- Guthrie, R.D., 2001. Origin and causes of the mammoth steppe: a story of cloud cover, woolly mammal tooth pits, buckles, and inside-out Beringia. *Quat. Sci. Rev.* 20, 549–574.
- Haarsma, A.J., Siepel, H., Gravendeel, B., 2016. Added value of metabarcoding combined with microscopy for evolutionary studies of mammals. *Zool. Scripta* 45, 37–49.
- Hall, T.A., 1999. BioEdit: a user-friendly biological sequence alignment editor and analysis program for Windows 95/98/NT. *Nucleic Acids Symposium Series. Information Retrieval Ltd.*, London, pp. 95–98 c1979-c2000.
- Harington, C.R., 2002. Yukon horse. Yukon Business, Tourism & Culture. Heritage Resources Unit.
- Harington, C., Eggleston-Stott, M., 1996. Partial carcass of a small Pleistocene horse from last chance Creek near Dawson city, Yukon. *Curr. Res. Pleistocene* 13, 105–107.
- Hebert, P.D., Cywinska, A., Ball, S.L., Dewaard, J.R., 2003. Biological identifications through DNA barcodes. *Proc. Roy. Soc. Lond. B Biol. Sci.* 270, 313–321.
- Hester, A.J., Bergman, M., Iason, G.R., Moen, J., 2006. Impacts of large herbivores on plant community structure and dynamics. *Large Herbivore Ecology, Ecosystem Dynamics and Conservation*. Cambridge University Press.
- Hofreiter, M., Poinar, H.N., Spaulding, W.G., Bauer, K., Martin, P.S., Possnert, G., Paabo, S., 2000. A molecular analysis of ground sloth diet through the last glaciation. *Mol. Ecol.* 9, 1975–1984.
- Hofreiter, M., Betancourt, J.L., Sbriller, A.P., Markgraf, V., McDonald, H.G., 2003. Phylogeny, diet, and habitat of an extinct ground sloth from Cuchillo Cura, Neuquen Province, southwest Argentina. *Quat. Res.* 59, 364–378.
- Hopkins, D.M., 1959. Cenozoic history of the bering land bridge: the seaway between the pacific and arctic basins has often been a land route between Siberia and Alaska. *Science* 129, 1519–1528.
- Hopkins, D.M., Matthews, J.V., Schweger, C.E., Young, H.S., 1982. Paleoeecology of Beringia. Academic Press, New York, USA.
- Ihrmark, K., Bødeker, I., Cruz-Martinez, K., Friberg, H., Kubartova, A., Schenck, J., Strid, Y., Stenlid, J., Brandström-Durling, M., Clemmensen, K.E., 2012. New primers to amplify the fungal ITS2 region—evaluation by 454-sequencing of artificial and natural communities. *FEMS Microbiol. Ecol.* 82, 666–677.
- Jacobson, C., 1915. CICUTOXIN: the POISONOUS principle IN water hemlock (cicuta). *J. Am. Chem. Soc.* 37, 916–934.
- JanskÄ, V., Jiménez-Alfaro, B., Chytrý, M., Divíšek, J., Anenkhonov, O., Korolyuk, A., Lashchinskyi, N., Culek, M., 2017. Palaeodistribution modelling of European vegetation types at the Last Glacial Maximum using modern analogues from Siberia: prospects and limitations. *Quat. Sci. Rev.* 159, 103–115.
- Johnson, C.N., 2009. Ecological consequences of Late Quaternary extinctions of megafauna. *Proc. Biol. Sci.* 276, 2509–2519.
- Jorgensen, T., Haile, J., Moller, P., Andreev, A., Boessenkool, S., Rasmussen, M., Kienast, F., Coissac, E., Taberlet, P., Brochmann, C., Bigelow, N.H., Andersen, K., Orlando, L., Gilbert, M.T., Willerslev, E., 2012. A comparative study of ancient sedimentary DNA, pollen and macrofossils from permafrost sediments of northern Siberia reveals long-term vegetational stability. *Mol. Ecol.* 21, 1989–2003.
- Jung, T.S., Stotyn, S.A., Czetwertynski, S.M., 2015. Dietary overlap and potential competition in a dynamic ungulate community in northwestern Canada. *J. Wildl. Manag.* 79, 1277–1285.
- Kaczynsky, P., Sturm, M.B., Sablin, M.V., Voigt, C.C., Smith, S., Ganbaatar, O., Balint, B., Walzer, C., Spasskaya, N.N., 2017. Stable isotopes reveal diet shift from pre-extinction to reintroduced Przewalski's horses. *Sci. Rep.* 7, 1–9.
- Kelly, A., Miller, J.H., Wooller, M.J., Seaton, C.T., Druckenmiller, P., DeSantis, L., 2021. Dietary paleoecology of bison and horses on the mammoth steppe of eastern Beringia based on dental microwear and mesowear analyses. *Palaeogeogr. Palaeoclimatol. Palaeoecol.* 572, 110394.
- Kienast, F., Schirmer, L., Siegert, C., Tarasov, P., 2005. Palaeobotanical evidence for warm summers in the East Siberian Arctic during the last cold stage. *Quat. Res.* 63, 283–300.
- Kosintsev, P.A., Lapteva, E.G., Korona, O.M., Zanina, O.G., 2012a. Living environments and diet of the mongochon mammoth, gydan peninsula, Russia. *Quat. Int.* 276–277, 253–268.
- Kosintsev, P.A., Lapteva, E.G., Trofimova, S.S., Zanina, O.G., Tikhonov, A.N., Van der Plicht, J., 2012b. Environmental reconstruction inferred from the intestinal contents of the Yamal baby mammoth Lyuba (*Mammuthus primigenius* Blumenbach, 1799). *Quat. Int.* 255, 231–238.
- Lawton, E., 1971. Moss Flora of the pacific northwest. The hattori botanical laboratory. Nichinan. *J. Hattori Bot. Lab. Suppl.*
- Leonard, J.L., Perkins, L.B., Lammers, D.J., Jenks, J.A., 2017. Are bison intermediate feeders? Unveiling summer diet selection at the northern fringe of historical distribution. *Rangel. Ecol. Manag.* 70, 405–410.
- CBOL Plant Working Group, Li, D.-Z., Gao, L.-M., Li, H.-T., Wang, H., Ge, X.-J., Liu, J.-Q., Chen, Z.-D., Zhou, S.-L., Chen, S.-L., 2011. Comparative analysis of a large dataset indicates that internal transcribed spacer (ITS) should be incorporated into the core barcode for seed plants. *Proc. Natl. Acad. Sci. Unit. States Am.* 108, 19641–19646.
- Lozhkin, A., Anderson, P., Glushkova, O.Y., Vazhenina, L., 2019. Late Quaternary environments on the far southwestern edge of Beringia. *Quat. Sci. Rev.* 203, 21–37.
- Lydolph, M.C., Jacobsen, J., Arctander, P., Gilbert, M.T., Gilichinsky, D.A., Hansen, A.J., Willerslev, E., Lange, L., 2005. Beringian paleoecology inferred from permafrost-preserved fungal DNA. *Appl. Environ. Microbiol.* 71, 1012–1017.
- MacFadden, B.J., Solounias, N., Cerling, T.E., 1999. Ancient diets, ecology, and extinction of 5-million-year-Old horses from Florida. *Science* 283, 824–827.
- Marsolier-Kergoat, M.C., Palacio, P., Berthouaud, V., Maksud, F., Stafford, T., Begouen, R., Elalouf, J.M., 2015. Hunting the extinct steppe Bison (*Bison priscus*) mitochondrial genome in the trois-freres paleolithic painted cave. *PLoS One* 10, e0128267.
- Martin, M., 2011. Cutadapt removes adapter sequences from high-throughput sequencing reads. *EMBnet. journal* 17, 10–12.
- Mauquoy, D., Van Geel, B., 2007. Plant Macrofossil Methods and Studies: Mire and Peat Macrosc. *Encyclopedia of Quaternary Science*. Elsevier Science.
- Mendoza, M., Palmqvist, P., 2008. Hypsodonty in ungulates: an adaptation for grass consumption or for foraging in open habitat? *J. Zool.* 274, 134–142.
- Mol, D., Shoshani, J., Tikhonov, A., van Geel, B., Sano, S.-I., Lazarev, P., Boeskorov, G., Agenbroad, L.D., 2006. The Yukagir Mammoth: brief history, 14C dates, individual age, gender, size, physical and environmental conditions and storage. *Scientific Annals, School of Geology* 98, 299–314. Aristotle University of Thessaloniki, Special.
- Moore, P.D., Webb, J.A., Collison, M.E., 1991. Pollen Analysis. Blackwell scientific publications.
- Nguyen, N.H., Song, Z., Bates, S.T., Branco, S., Tedersoo, L., Menke, J., Schilling, J.S., Kennedy, P.G., 2016. FUNGuild: an open annotation tool for parsing fungal community datasets by ecological guild. *Fungal Ecology* 20, 241–248.
- Nilsson, R.H., Larsson, K.-H., Taylor, A.F.S., Bengtsson-Palme, J., Jeppesen, T.S., Schigel, D., Kennedy, P., Picard, K., Glöckner, F.O., Tedersoo, L., 2019. The UNITE database for molecular identification of fungi: handling dark taxa and parallel taxonomic classifications. *Nucleic Acids Res.* 47, D259–D264.
- Parducci, L., Suyama, Y., Lascoux, M., Bennett, K.D., 2005. Ancient DNA from pollen: a genetic record of population history in Scots pine. *Mol. Ecol.* 14, 2873–2882.
- Parducci, L., Valiranta, M., Salonen, J.S., Ronkainen, T., Matetovici, I., Fontana, S.L., Eskola, T., Sarala, P., Suyama, Y., 2015. Proxy comparison in ancient peat sediments: pollen, macrofossil and plant DNA. *Philos. Trans. R. Soc. Lond. B Biol. Sci.* 370, 20130382.
- Parducci, L., Alsos, I.G., Unneberg, P., Pedersen, M.W., Han, L., Lammers, Y., Salonen, J.S., Väliiranta, M.M., Slotte, T., Wohlfarth, B., 2019. Shotgun environmental DNA, pollen, and macrofossil analysis of Lateglacial lake sediments from

- southern Sweden. *Frontiers in Ecology and Evolution* 7, 189.
- Pedersen, M.W., Ginolhac, A., Orlando, L., Olsen, J., Andersen, K., Holm, J., Funder, S., Willerslev, E., Kjær, K.H., 2013. A comparative study of ancient environmental DNA to pollen and macrofossils from lake sediments reveals taxonomic overlap and additional plant taxa. *Quat. Sci. Rev.* 75, 161–168.
- Pino-Bodas, R., Stenroos, S., 2020. Global biodiversity patterns of the photobionts associated with the genus *Cladonia* (lecanorales, ascomycota). *Microb. Ecol.* 1–15.
- POWO, 2019. Plants of the World Online. Facilitated by the Royal Botanic Gardens, Kew.
- Rawlence, N.J., Lowe, D.J., Wood, J.R., Young, J.M., Churchman, G.J., Huang, Y.T., Cooper, A., 2014. Using palaeoenvironmental DNA to reconstruct past environments: progress and prospects. *J. Quat. Sci.* 29, 610–626.
- Reimer, P.J., Austin, W.E., Bard, E., Bayliss, A., Blackwell, P.G., Ramsey, C.B., Butzin, M., Cheng, H., Edwards, R.L., Friedrich, M., 2020. The IntCal20 Northern Hemisphere radiocarbon age calibration curve (0–55 cal kBP). *Radiocarbon* 62, 725–757.
- Reitsma, T., 1966. Pollen morphology of some European Rosaceae. *Acta Bot. Neerl.* 15, 290–307.
- Rognes, T., Flouri, T., Nichols, B., Quince, C., Mahé, F., 2016. VSEARCH: a versatile open source tool for metagenomics. *PeerJ* 4, e2584.
- Rohland, N., Hofreiter, M., 2007. Ancient DNA extraction from bones and teeth. *Nat. Protoc.* 2, 1756–1762.
- Savage, D.A., Heller, V.G., 1947. Nutritional Qualities of Range Forage Plants in Relation to Grazing with Beef Cattle on the Southern Plains Experimental Range.
- Schmieder, R., Edwards, R., 2011. Quality control and preprocessing of metagenomic datasets. *Bioinformatics* 27, 863–864.
- Soininen, E.M., Gauthier, G., Bilodeau, F., Berteaux, D., Gielly, L., Taberlet, P., Gussarova, G., Bellemain, E., Hassel, K., Stenoien, H.K., Epp, L., Schroder-Nielsen, A., Brochmann, C., Yoccoz, N.G., 2015. Highly overlapping winter diet in two sympatric lemming species revealed by DNA metabarcoding. *PLoS One* 10, e0115335.
- Sønstebo, J., Gielly, L., Brysting, A., Elven, R., Edwards, M., Haile, J., Willerslev, E., Coissac, E., Rioux, D., Sannier, J., 2010. Using next-generation sequencing for molecular reconstruction of past Arctic vegetation and climate. *Molecular Ecology Resources* 10, 1009–1018.
- Stech, M., Kolvoort, E., Loonen, M.J., Vrieling, K., Kruijer, J.D., 2011. Bryophyte DNA sequences from faeces of an arctic herbivore, barnacle goose (*Branta leucopsis*). *Mol Ecol Resour* 11, 404–408.
- Swanson, D.K., 2006. Biogeographical evidence for the grass (Poaceae) species of Pleistocene Beringian lowlands. *Arctic* 191–200.
- Taberlet, P., Coissac, E., Pompanon, F., Gielly, L., Miquel, C., Valentini, A., Vermet, T., Corthier, G., Brochmann, C., Willerslev, E., 2006. Power and limitations of the chloroplast *trnL* (UAA) intron for plant DNA barcoding. *Nucleic Acids Res.* 35, e14–e14.
- Team, R.C., 2013. R: A Language and Environment for Statistical Computing.
- Troeva, E.I., Isaev, A.P., Cherosov, M.M., Karpov, N., 2010. The Far North: Plant Biodiversity and Ecology of Yakutia. Springer Science & Business Media.
- Uno, K.T., Fisher, D.C., Wittmyer, G., Douglas-Hamilton, I., Carpenter, N., Omondi, P., Cerling, T.E., 2020. Forward and inverse methods for extracting climate and diet information from stable isotope profiles in proboscidean molars. *Quat. Int.* 557, 92–109.
- Van der Plicht, J., Hogg, A., 2006. A note on reporting radiocarbon. *Quat. Geochronol.* 1, 237–240.
- van Geel, B., Aptroot, A., Baittinger, C., Birks, H.H., Bull, I.D., Cross, H.B., Evershed, R.P., Gravendeel, B., Kompanje, E.J.O., Kuperus, P., Mol, D., Nierop, K.G.J., Pals, J.P., Tikhonov, A.N., van Reenen, G., van Tienderen, P.H., 2008. The ecological implications of a Yakutian mammoth's last meal. *Quat. Res.* 69, 361–376.
- van Geel, B., Fisher, D.C., Rountrey, A.N., van Arkel, J., Duivenvoorden, J.F., Nieman, A.M., van Reenen, G.B., Tikhonov, A.N., Buigues, B., Gravendeel, B., 2011a. Palaeo-environmental and dietary analysis of intestinal contents of a mammoth calf (Yamal Peninsula, northwest Siberia). *Quat. Sci. Rev.* 30, 3935–3946.
- van Geel, B., Guthrie, R.D., Altmann, J.G., Broekens, P., Bull, I.D., Gill, F.L., Jansen, B., Nieman, A.M., Gravendeel, B., 2011b. Mycological evidence of coprophagy from the feces of an Alaskan Late Glacial mammoth. *Quat. Sci. Rev.* 30, 2289–2303.
- Van Geel, B., Protopopov, A., Bull, I., Duijm, E., Gill, F., Lammers, Y., Nieman, A., Rudaya, N., Trofimova, S., Tikhonov, A.N., 2014. Multiproxy diet analysis of the last meal of an early Holocene Yakutian bison. *J. Quat. Sci.* 29, 261–268.
- Vitt, D.H., Buck, W.R., 1992. Key to the Moss Genera of North America North of Mexico. University of Michigan Herbarium.
- White, T.J., Bruns, T., Lee, S., Taylor, J., 1990. Amplification and direct sequencing of fungal ribosomal RNA genes for phylogenetics. *PCR protocols: a guide to methods and applications* 18, 315–322.
- Willerslev, E., Davison, J., Moora, M., Zobel, M., Coissac, E., Edwards, M.E., Lorenzen, E.D., Vestergard, M., Gussarova, G., Haile, J., Craine, J., Gielly, L., Boessenkool, S., Epp, L.S., Pearman, P.B., Cheddadi, R., Murray, D., Brathen, K.A., Yoccoz, N., Binney, H., Cruaud, C., Wincker, P., Goslar, T., Alsos, I.G., Bellemain, E., Brysting, A.K., Elven, R., Sonstebo, J.H., Murton, J., Sher, A., Rasmussen, M., Ronn, R., Mourier, T., Cooper, A., Austin, J., Moller, P., Froese, D., Zazula, G., Pompanon, F., Rioux, D., Niderkorn, V., Tikhonov, A., Savvinov, G., Roberts, R.G., MacPhee, R.D., Gilbert, M.T., Kjær, K.H., Orlando, L., Brochmann, C., Taberlet, P., 2014. Fifty thousand years of Arctic vegetation and megafaunal diet. *Nature* 506, 47–51.
- Williams, J.W., Jackson, S.T., 2007. Novel climates, no-analog communities, and ecological surprises. *Front. Ecol. Environ.* 5, 475–482.
- Wood, J.R., Wilmshurst, J.M., 2016. A protocol for subsampling Late Quaternary coprolites for multi-proxy analysis. *Quat. Sci. Rev.* 138, 1–5.
- Zazula, G.D., Schweger, C.E., Beaudoin, A.B., McCourt, G.H., 2006. Macrofossil and pollen evidence for full-glacial steppe within an ecological mosaic along the Bluefish River, eastern Beringia. *Quat. Int.* 142, 2–19.
- Zazula, G.D., Froese, D.G., Elias, S.A., Kuzmina, S., Mathewes, R.W., 2007. Arctic ground squirrels of the mammoth-steppe: paleoecology of Late Pleistocene middens (~ 24 000–29 450 14C yr BP), Yukon Territory, Canada. *Quat. Sci. Rev.* 26, 979–1003.
- Zhang, J., Kobert, K., Flouri, T., Stamatakis, A., 2014. PEAR: a fast and accurate Illumina Paired-End reAd mergeR. *Bioinformatics* 30, 614–620.
- Zimov, S.A., Zimov, N.S., Tikhonov, A.N., Chapin, F.S., 2012. Mammoth steppe: a high-productivity phenomenon. *Quat. Sci. Rev.* 57, 26–45.