



UvA-DARE (Digital Academic Repository)

The rise of a native sun coral species on southern Caribbean coral reefs

Hoeksema, B.W.; Hiemstra, A.-F.; Vermeij, M.J.A.

DOI

[10.1002/ecs2.2942](https://doi.org/10.1002/ecs2.2942)

Publication date

2019

Document Version

Final published version

Published in

Ecosphere

License

CC BY

[Link to publication](#)

Citation for published version (APA):

Hoeksema, B. W., Hiemstra, A.-F., & Vermeij, M. J. A. (2019). The rise of a native sun coral species on southern Caribbean coral reefs. *Ecosphere*, *10*(11), [e02942].
<https://doi.org/10.1002/ecs2.2942>

General rights

It is not permitted to download or to forward/distribute the text or part of it without the consent of the author(s) and/or copyright holder(s), other than for strictly personal, individual use, unless the work is under an open content license (like Creative Commons).

Disclaimer/Complaints regulations

If you believe that digital publication of certain material infringes any of your rights or (privacy) interests, please let the Library know, stating your reasons. In case of a legitimate complaint, the Library will make the material inaccessible and/or remove it from the website. Please Ask the Library: <https://uba.uva.nl/en/contact>, or a letter to: Library of the University of Amsterdam, Secretariat, Singel 425, 1012 WP Amsterdam, The Netherlands. You will be contacted as soon as possible.



ECOSPHERE NATURALIST

The rise of a native sun coral species on southern Caribbean coral reefs

BERT W. HOEKSEMA ^{1,2,3,†} AUKE-FLORIAN HIEMSTRA,^{1,3} AND MARK J. A. VERMEIJ^{4,5}

¹Taxonomy and Systematics Group, Naturalis Biodiversity Center, P.O. Box 9517, 2300 RA Leiden, The Netherlands

²Groningen Institute for Evolutionary Life Sciences, University of Groningen, P.O. Box 11103, 9700 CC Groningen, The Netherlands

³Institute of Biology Leiden, Leiden University, P.O. Box 9505, 2300 RA Leiden, The Netherlands

⁴Institute for Biodiversity and Ecosystem Dynamics, University of Amsterdam, P.O. Box 94248, 1090 GE Amsterdam, The Netherlands

⁵CARMABI Foundation, P.O. Box 2090, Piscaderabaai z/n, Willemstad, Curaçao

Citation: Hoeksema, B. W., A.-F. Hiemstra, and M. J. A. Vermeij. 2019. The rise of a native sun coral species on southern Caribbean coral reefs. *Ecosphere* 10(11):e02942. 10.1002/ecs2.2942

Abstract. In contrast with a general decline of Caribbean reef corals, a previously rare sun coral is increasing in abundance within shallow coral communities on Curaçao. This azooxanthellate scleractinian was identified as *Cladopsammia manuelensis*, which has an ampho-Atlantic distribution. Over the last decade, *C. manuelensis* has increased abundance along the leeward coast of Curaçao (southern Caribbean) between depths of 4 and 30 m. This species was initially not noticed because it resembles the invasive coral *Tubastraea coccinea*, which was introduced to Curaçao from the Indo-Pacific around 1940. However, in contrast to *T. coccinea*, *C. manuelensis* was previously only present on deeper reef sections (>70 m) of Caribbean reefs. Our observations illustrate how the sudden increase in abundance of a previously unnoticed, apparently cryptogenic species could result from natural dynamics on present-day reefs, but also could easily be mistaken for an invasive species. The finding that deep reef sections can harbor species capable of colonizing shallower reef zones highlights the importance of thorough inventories of reef communities across large depth ranges, which can help us to discriminate between range increases of native species and the arrival of invasives.

Key words: bathymetric distribution; *Cladopsammia*; coral reefs; cryptogenic; deep water; Dendrophylliidae; invasive; native; *Rhizopsammia*; *Tubastraea*.

Received 23 September 2019; **accepted** 7 October 2019. Corresponding Editor: Debra P. C. Peters.

Copyright: © 2019 The Authors. This is an open access article under the terms of the Creative Commons Attribution License, which permits use, distribution and reproduction in any medium, provided the original work is properly cited.

† **E-mail:** bert.hoeksema@naturalis.nl

Indo-Pacific corals of the genus *Tubastraea* (Scleractinia: Dendrophylliidae) have become introduced to the Caribbean for decades (Creed et al. 2017). Because their expanded tentacles appear like yellow, radiating sun rays, they are often named sun corals. So far, three *Tubastraea* species have been observed in the tropical and subtropical West Atlantic, most probably introduced as fouling organisms on ships and oil platforms (Creed et al. 2017). Unlike many other reef-building corals, *Tubastraea* species are not

restricted to shallow depths as they lack symbiotic algae (zooxanthellae) and solely depend on planktonic food for nutrition (Goreau et al. 1971).

The first introduced *Tubastrea* species, *T. coccinea* Lesson, 1829, arrived in the Caribbean at Curaçao and Puerto Rico around 1940 and subsequently expanded its range northward to Georgia (USA) and southward to southern Brazil (Cairns 2000, Creed et al. 2017). The second species, *T. tagusensis* Wells, 1982, has become widespread along the Brazilian coastline since 2002 (Creed et al. 2017)

and has recently been reported from the Gulf of Mexico (Figueroa et al. 2019). Both species form clumps of polyps with dark- and light-orange calyces, respectively (Mantelatto et al. 2011). The third introduced species, *T. micranthus* (Ehrenberg, 1834), has been observed as fouling benthos on oil rigs in the Gulf of Mexico since 2006 and possesses a branching morphology with green calyces and tentacles (Sammarco et al. 2010, Creed et al. 2017). Along the coastline of Brazil, the first two are now considered nuisance species because they outcompete native corals (dos Santos et al. 2013, Miranda et al. 2016).

During reef surveys (2014–2017) along the leeward side of Curaçao (southern Caribbean), a previously unnoticed, but presently common sun coral species was observed at 23 out of 32 (72%) dive locations (Figs. 1, 2; Appendix S1: Table S1). Its sudden increase in abundance in shallow water at Curaçao had already been described by Engelen et al. (2018), who identified the species as *Rhizopsammia goesi* (Lindström 1877). The new species looked very similar to co-occurring *T. coccinea*, because both species have distinctive yellow tentacles. However, under artificial light the color of the new species' calyces varies from gray to brick red or dark orange, which differs from the uniform dark orange commonly seen in *T. coccinea* (Fig. 1; Appendix S1). Young polyps of the newly seen species taper toward the base, where they bud off from the basis of older polyps (Fig. 1c–f, j) or from root-like stolons (Fig. 1a, d, k, l), which eventually form a basal plate (Fig. 1k). In between polyps, the basal plate may become overgrown by algae, disguising the coral's colonial architecture (Fig. 1g, l). Both species were commonly found on reefs, on shipwrecks, and underneath rocky overhangs: *T. coccinea* at 0.2–55 m depth and the new species at 4–30 m (Appendix S1).

Septa of the new species appear to be more pronounced than those of *T. coccinea* (Fig. 2a). In dead polyps (Fig. 2b), septa of the new species show a bifurcating pattern according to the Pourtales plan (Cairns 1994), which does not occur in *Tubastraea* (Fig. 2c). The septal pattern and the presence of stolons indicate that this species belongs to either the genus *Cladopsammia* or *Rhizopsammia*, which are both phylogenetically closely related to *Tubastraea* (Cairns 2001, Arrigoni et al. 2014). Genetic information on Atlantic

Cladopsammia and *Rhizopsammia* is currently not available, but a preliminary molecular analysis based on the mitochondrial marker cytochrome c oxidase subunit I (COI) revealed that the species found on Curaçao is very closely related to both *Cladopsammia gracilis* (Milne Edwards & Haime, 1848) and *Rhizopsammia wettsteini* (Scheer & Pillai, 1983) from the Red Sea (A.-F. Hiemstra, unpublished data). The stolons of *Cladopsammia* merge into a basal plate (like in Fig. 1k) but not in *Rhizopsammia*; though this difference is hard to observe in juveniles (Cairns 2000, Cairns and Kitahara 2012; Fig. 1a) making young individuals of both genera almost impossible to identify.

In the Caribbean, two species are already present that fulfill aforementioned morphological characters and taxonomic relatedness to the species from the Red Sea: *Cladopsammia manuelensis* (Chevalier, 1966) and *R. goesi* (Lindström 1877). Both species occur at mesophotic depths or deeper. The bathymetric range of the amphiatlantic *C. manuelensis* is 70–366 m (Cairns 2000). Its earliest West Atlantic records (since 1958) are from the Gulf of Mexico, while specimens from Curaçao were first collected with manned submersibles from 143 to 330 m depth in 2000 and 2013, respectively (<https://collections.nmnh.si.edu/search/iz/>). Fossils of East Atlantic *C. manuelensis* were found in the Pleistocene of West Africa (Cairns 2000), and since there are several scleractinian coral species with a natural amphiatlantic distribution (Cairns 2000, Nunes et al. 2011), there is no reason to assume that this species was recently introduced in the western Atlantic.

Rhizopsammia goesi is a deep-water species native to the Caribbean: Museum specimens have been collected from 75 to 275 depth at St. Martin in the eastern Caribbean (Lindström 1877) and from 73 to 152 m depth in the Colombian Caribbean (Santodomingo et al. 2013), and it has been observed at depths exceeding 30 m in the Bahamas and Cayman Islands (Slattery and Lesser 2019). Rather than yet another introduced dendrophylliid, the new coral increasing in abundance within shallow-water coral communities is likely one of two species that are native to deep water in the Caribbean as already proposed by Engelen et al. (2018). However, in contrast to Engelen et al. (2018) and Hoeksema and ten Hove (2017), who identified the species as *R. goesi*, we identified the species as *C. manuelensis*



Fig. 1. *Cladopsammia manuelensis* (a–l) and invasive *Tubastraea coccinea* (m–o) at various localities (with depths) at Curaçao, southern Caribbean (2014–2017). (a) Snake Bay, 16 m. (b, c) Marie Pampoen, 17 m. (d, j) Hilton, Piscadera Bay, 12 m. (e) Caracas Bay, 9 m. (f, g) Water Factory, 16 m. (h, i) Caracas Bay, 20 m. (k, m) Carmabi, Piscadera Bay, 3 m. (l) Tugboat, Caracas Bay, 4 m. (n) Superior Producer shipwreck, 30 m. (o) Hilton, Piscadera Bay, 1 m (on a concrete pillar).

based on the presence of a basal plate, which is visible in some of the larger specimens (Fig. 1; Appendix S1) but is absent in *R. goesi* (Cairns 2000). Previously, the basal plate was not noticed

because corals were too young and it had not yet developed or because it was covered by algae.

Corals of *C. manuelensis* were recently also discovered in Haiti, where they were abundant

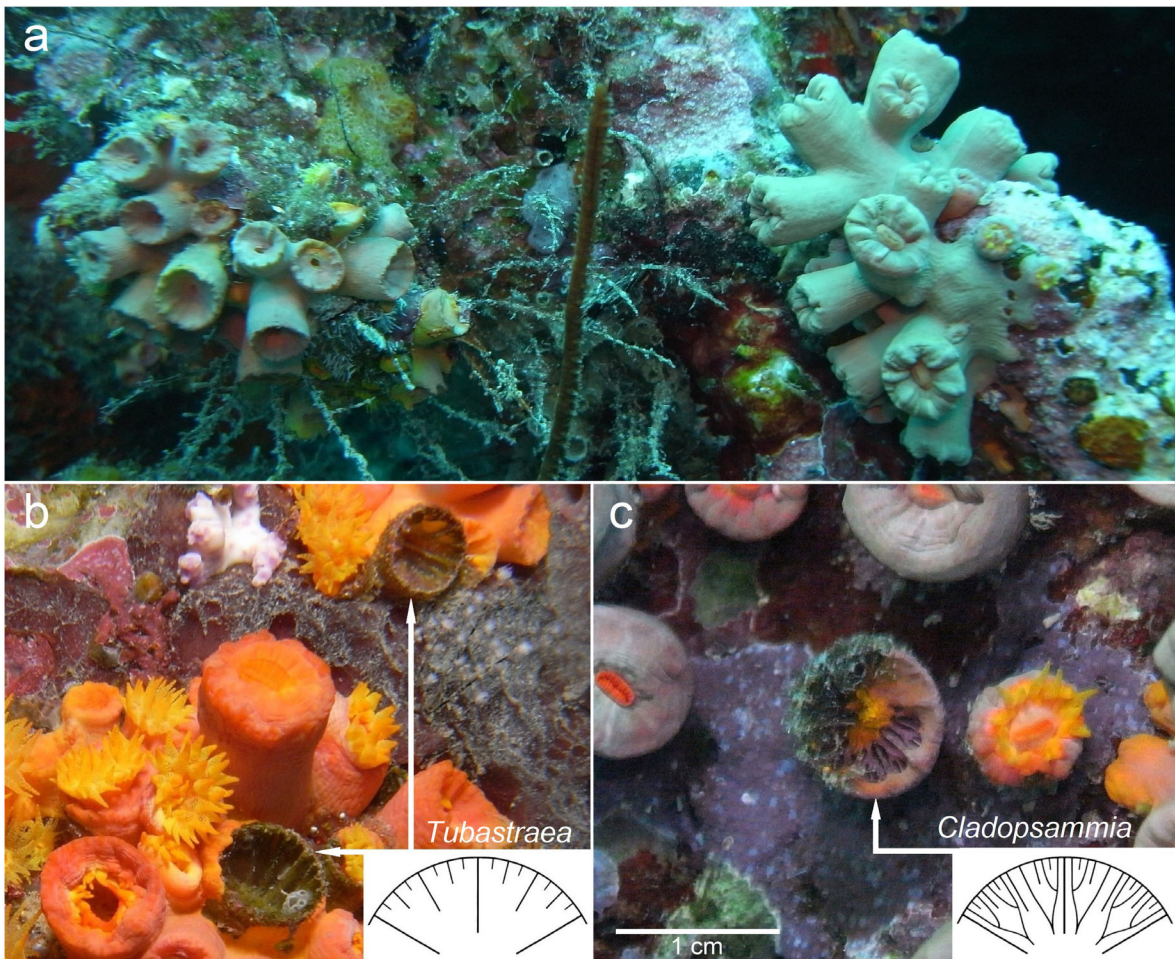


Fig. 2. *Tubastraea coccinea* (left) and *Cladopsammia manuelensis* (right) at Curaçao. (a) Underexposed picture showing green color of both species at 24 m depth on Superior Producer shipwreck. (b, c) Use of artificial light reveals true colors and septal arrangement inside dead calyces (schemes after Cairns 1994): (a) regular, (b) Pourtales plan.

in shallow reef communities at eight out of 32 (25%) dive sites (Kramer et al. 2016). Observations from Haiti (Kramer et al. 2016: Fig. 64) clearly show that the species is identical to that on Curaçao and probably represent the first record of *C. manuelensis* occurring within shallow Caribbean reef communities (Kramer et al. 2016; J. Lang and S. Williams, *personal communication*). Finally, approximately 100 colonies were observed across 51 sites at Aruba in May 2019 (see, e.g., Appendix S1: Fig. S16), an island located only 75 km west of Curaçao.

A plausible hypothetical scenario for the appearance of *C. manuelensis* within shallow reef

communities on Curaçao is that this native deep-water species has started to colonize shallower habitats due to recent, but unidentified, changes in environmental conditions. Earlier detection at Curaçao may have been hindered because of *Cladopsammia*'s resemblance to *Tubastraea* (Figs. 1, 2). The fact that it is easily confused with an introduced, already established dendrophylliid species can also explain why it has not yet been reported from shallow reef communities in other Caribbean localities apart from Haiti, Curaçao, and Aruba. Moreover, an upward migration may not have taken place everywhere in the Caribbean. For instance, despite a search for *C. manuelensis* at St. Eustatius (eastern Caribbean) in 2015,

in particular on shipwrecks and underneath rocky overhangs, it was not found here (Hoeksema and van Moorsel 2016).

The rise of *C. manuelensis* on shallow Curaçaoan reefs and certain other islands within the Caribbean is remarkable considering the decrease in abundance of many other coral species in recent decades (de Bakker et al. 2016). Additional research is needed to find out what has caused the expansion of *C. manuelensis* on Caribbean coral reefs and how this relates to the ecological role and geographic expansion of sun coral species in the western Atlantic. Moreover, the present case indicates that in future studies on the origin of cryptogenic reef species, we should not only consider introductions from elsewhere, but also bathymetric range expansions of native species previously only recorded from greater depths.

ACKNOWLEDGMENTS

We thank staff of CARMABI (Curaçao) and Substation Curaçao for hospitality and logistic support. Bruce Brandt, pilot of the manned submersible Curasub, supplied photographs (Figs. S12–13). This publication is Ocean Heritage Foundation/Curaçao Sea Aquarium/Substation Curaçao (OHF/CSA/SC) contribution #39. Participation of the second author was supported by grants from the LUSTRA+ Fellowship, J.J. ter Pelkwijk Fonds, A.M. Buitendijk Fonds, and the Society for Research in the Tropics (Treib Maatschappij). Two reviewers provided constructive comments.

LITERATURE CITED

- Arrigoni, R., Y. F. Kitano, J. Stolarski, B. W. Hoeksema, H. Fukami, F. Stefani, P. Galli, S. Montano, E. Castoldi, and F. Benzoni. 2014. A phylogeny reconstruction of the Dendrophylliidae (Cnidaria, Scleractinia) based on molecular and micromorphological criteria, and its ecological implications. *Zoologica Scripta* 43:661–688.
- Cairns, S. D. 1994. Scleractinia of the temperate North Pacific. *Smithsonian Contributions to Zoology* 557:1–150.
- Cairns, S. D. 2000. A revision of the shallow-water azooxanthellate Scleractinia of the western Atlantic. *Studies of the Natural History of the Caribbean Region* 75:1–240.
- Cairns, S. D. 2001. A generic revision and phylogenetic analysis of the Dendrophylliidae (Cnidaria: Scleractinia). *Smithsonian Contributions to Zoology* 615:1–75.
- Cairns, S. D., and M. V. Kitahara. 2012. An illustrated key to the genera and subgenera of the Recent azooxanthellate Scleractinia (Cnidaria, Anthozoa), with an attached glossary. *ZooKeys* 227:1–47.
- Creed, J. C., et al. 2017. The invasion of the azooxanthellate coral *Tubastraea* (Scleractinia: Dendrophylliidae) throughout the world: history, pathways and vectors. *Biological Invasions* 19:283–305.
- de Bakker, D. M., E. H. Meesters, R. P. M. Bak, G. Nieuwland, and F. C. van Duyl. 2016. Long-term shifts in coral communities on shallow to deep reef slopes of Curaçao and Bonaire: Are there any winners? *Frontiers in Marine Science* 3:247.
- dos Santos, L. A. H., F. V. Ribeiro, and J. C. Creed. 2013. Antagonism between invasive pest corals *Tubastraea* spp. and the native reef-builder *Mussismilia hispida* in the southwest Atlantic. *Journal of Experimental Marine Biology and Ecology* 449:69–76.
- Engelen, A. H., T. Aires, M. J. A. Vermeij, G. J. Herndl, E. A. Serrão, and P. R. Frade. 2018. Host differentiation and compartmentalization of microbial communities in the azooxanthellate cupcorals *Tubastraea coccinea* and *Rhizopsammia goesi* in the Caribbean. *Frontiers in Marine Science* 5:391.
- Figueroa, D. F., A. McClure, N. J. Figueroa, and D. W. Hicks. 2019. Hiding in plain sight: invasive coral *Tubastraea tagusensis* (Scleractinia:Hexacorallia) in the Gulf of Mexico. *Coral Reefs* 38:395–403.
- Goreau, T. F., N. Goreau, and C. M. Yonge. 1971. Reef corals: Autotrophs or heterotrophs? *Biological Bulletin* 141:247–260.
- Hoeksema, B. W., and H. A. ten Hove. 2017. The invasive sun coral *Tubastraea coccinea* hosting a native Christmas tree worm at Curaçao, Dutch Caribbean. *Marine Biodiversity* 47:59–65.
- Hoeksema, B. W., and G. W. N. M. van Moorsel. 2016. Stony corals of St. Eustatius. Pages 32–37 in B. W. Hoeksema, editor. *Marine biodiversity survey of St. Eustatius, Dutch Caribbean, 2015*. Naturalis Biodiversity Center, Leiden, The Netherlands.
- Kramer, P., et al. 2016. Baseline ecological inventory for Three Bays National Park, Haiti. Report to the Inter-American Development Bank. The Nature Conservancy, Arlington County, Virginia, USA.
- Lindström, G. 1877. Contributions to the actinology of the Atlantic Ocean. *Kongliga Svenska Vetenskaps-Akademiens Handlingar* 14:1–26.
- Mantelatto, M. C., J. C. Creed, G. G. Mourão, A. E. Migotto, and A. Lindner. 2011. Range expansion of the invasive corals *Tubastraea coccinea* and *Tubastraea tagusensis* in the Southwest Atlantic. *Coral Reefs* 30:397.

- Miranda, R. J., I. C. S. Cruz, and F. Barros. 2016. Effects of the alien coral *Tubastraea tagusensis* on native coral assemblages in a southwestern Atlantic coral reef. *Marine Biology* 163:45.
- Nunes, F. L. D., R. D. Norris, and N. Knowlton. 2011. Long distance dispersal and connectivity in amphiatlantic corals at regional and basin scales. *PLOS ONE* 6:e22298.
- Sammarco, P. W., S. A. Porter, and S. D. Cairns. 2010. A new coral species introduced into the Atlantic Ocean - *Tubastraea micranthus* (Ehrenberg 1834) (Cnidaria, Anthozoa, Scleractinia): An invasive threat? *Aquatic Invasions* 5:131–140.
- Santodomingo, N., J. Reyes, P. Flórez, I. C. Chacón-Gómez, L. P. van Ofwegen, and B. W. Hoeksema. 2013. Diversity and distribution of azooxanthellate corals in the Colombian Caribbean. *Marine Biodiversity* 43:7–22.
- Slattery, M., and M. P. Lesser. 2019. The Bahamas and Cayman Islands. Pages 47–56 in Y. Loya, K. A. Puglise, and T. C. L. Bridge, editors. *Mesophotic coral ecosystems*. Springer, Cham, Switzerland.

SUPPORTING INFORMATION

Additional Supporting Information may be found online at: <http://onlinelibrary.wiley.com/doi/10.1002/ecs2.2942/full>