



UvA-DARE (Digital Academic Repository)

Engineering of Tomato Glandular Trichomes for the Production of Specialized Metabolites

Kortbeek, R.W.J.; Xu, J.; Ramirez, A.; Spyropoulou, E.; Diergaarde, P.; Otten-Bruggeman, I.; de Both, M.; Nagel, R.; Schmidt, A.; Schuurink, R.C.; Bleeker, P.M.

DOI

[10.1016/bs.mie.2016.02.014](https://doi.org/10.1016/bs.mie.2016.02.014)

Publication date

2016

Document Version

Final published version

Published in

Synthetic Biology and Metabolic Engineering in Plants and Microbes

License

Article 25fa Dutch Copyright Act

[Link to publication](#)

Citation for published version (APA):

Kortbeek, R. W. J., Xu, J., Ramirez, A., Spyropoulou, E., Diergaarde, P., Otten-Bruggeman, I., de Both, M., Nagel, R., Schmidt, A., Schuurink, R. C., & Bleeker, P. M. (2016). Engineering of Tomato Glandular Trichomes for the Production of Specialized Metabolites. In S. E. O'Connor (Ed.), *Synthetic Biology and Metabolic Engineering in Plants and Microbes* (pp. 305-331). (Methods in Enzymology; Vol. 576). Academic Press.
<https://doi.org/10.1016/bs.mie.2016.02.014>

General rights

It is not permitted to download or to forward/distribute the text or part of it without the consent of the author(s) and/or copyright holder(s), other than for strictly personal, individual use, unless the work is under an open content license (like Creative Commons).

Disclaimer/Complaints regulations

If you believe that digital publication of certain material infringes any of your rights or (privacy) interests, please let the Library know, stating your reasons. In case of a legitimate complaint, the Library will make the material inaccessible and/or remove it from the website. Please Ask the Library: <https://uba.uva.nl/en/contact>, or a letter to: Library of the University of Amsterdam, Secretariat, Singel 425, 1012 WP Amsterdam, The Netherlands. You will be contacted as soon as possible.

UvA-DARE is a service provided by the library of the University of Amsterdam (<https://dare.uva.nl>)



Engineering of Tomato Glandular Trichomes for the Production of Specialized Metabolites

R.W.J. Kortbeek*, J. Xu*, A. Ramirez*, E. Spyropoulou*,
P. Diergaarde[†], I. Otten-Bruggeman[†], M. de Both[†], R. Nagel[‡],
A. Schmidt[‡], R.C. Schuurink*,¹ P.M. Bleeker*

*Swammerdam Institute for Life Sciences, University of Amsterdam, Amsterdam, The Netherlands

[†]Keygene N.V., Wageningen, The Netherlands

[‡]Max Planck Institute for Chemical Ecology, Jena, Germany

¹Corresponding author: e-mail address: R.C.Schuurink@uva.nl

Contents

1. Introduction	306
1.1 Trichomes on Plants	306
1.2 Specialized Metabolites and Application	306
1.3 Production of Specialized Metabolites in Tomato Trichomes	307
1.4 Modifying Terpene Production	308
1.5 Focus	310
2. Materials and Technology	310
2.1 Transient Transformation of Tomato Trichomes by Microparticle Bombardment	310
2.2 Stable Transformation of Tomato Trichomes	316
3. Proof of Concept: Targeted Expression of a Terpene Precursor Gene in Tomato Glandular Trichomes	318
3.1 Stable Trichome-Specific Expression of FPS	318
3.2 Functional Validation of Trichome Engineering	321
4. Summary	325
Acknowledgments	326
References	327

Abstract

Glandular trichomes are specialized tissues on the epidermis of many plant species. On tomato they synthesize, store, and emit a variety of metabolites such as terpenoids, which play a role in the interaction with insects. Glandular trichomes are excellent tissues for studying the biosynthesis of specialized plant metabolites and are especially suitable targets for metabolic engineering. Here we describe the strategy for engineering tomato glandular trichomes, first with a transient expression system to provide proof

of trichome specificity of selected promoters. Using microparticle bombardment, the trichome specificity of a terpene-synthase promoter could be validated in a relatively fast way. Second, we describe a method for stable expression of genes of interest in trichomes. Trichome-specific expression of another terpene-synthase promoter driving the yellow-fluorescence protein-gene is presented. Finally, we describe a case of the overexpression of farnesyl diphosphate synthase (FPS), specifically in tomato glandular trichomes, providing an important precursor in the biosynthetic pathway of sesquiterpenoids. FPS was targeted to the plastid aiming to engineer sesquiterpenoid production, but interestingly leading to a loss of monoterpene production in the transgenic tomato trichomes. With this example we show that trichomes are amenable to engineering though, even with knowledge of a biochemical pathway, the result of such engineering can be unexpected.



1. INTRODUCTION

1.1 Trichomes on Plants

Trichomes are specialized structures of epidermal origin found as extrusions or appendages on plant surfaces, but they are also found on lichens and even algae (Engene et al., 2012). Trichomes are very diverse in appearance and function in stress resistance, including excessive light or temperature, and insect and pathogen defence. They are usually shaped as hair-like structures, but can also appear as scales, buds or papillae and range from very small unicellular to very big multicellular structures. On tomato the trichomes are shaped as hairs and are differentiated in eight types including four that are glandular (Glas et al., 2012). Glandular trichomes are typically multicellular with one or more glandular cells that can produce, store, emit, or exude specialized compounds into the environment (volatile) or onto the epidermal surface (nonvolatile) (Schillmiller, Last, & Pichersky, 2008; Wagner, 1991). Targeting of particular biosynthetic pathways to these specialized structures is thought to be highly regulated as not to interfere with the plants' development. Glandular trichomes are well-known sources of essential oils and resins that have a widespread use in agricultural, pharmaceutical, and cosmetic industries.

1.2 Specialized Metabolites and Application

In addition to the primary metabolites that most plants have in common, plants can produce a large variety of specialized metabolites. Many of these metabolites, including terpenoids, acylsugars, indoles, phenolic compounds, and methyl ketones have a role in defence against herbivores

and pathogenic organisms. All these compounds have been described to be synthesized by or present in glandular trichomes (for a review, see [Glas et al., 2012](#)). Terpenoids are the largest group of specialized metabolites with more than 30,000 terpenoids known to date to be produced by plants. Also tomato glandular trichomes produce a wide array of terpenoids, which are mostly specialized metabolites with roles in defence against pests and in attracting beneficial insects such as natural enemies of herbivores ([Kappers et al., 2005](#); [Simmons & Gurr, 2005](#); [Weinhold & Baldwin, 2011](#)).

1.3 Production of Specialized Metabolites in Tomato Trichomes

Terpenoids are synthesized via distinct metabolic pathways inside tomato trichome head cell(s). They are derived from rather simple universal C_5 isoprene building blocks but can result in a wide variety of decorated $(C_5)_n$ molecules. Two main pathways were identified for the production of these building blocks. Both these pathways result in the production of the intermediate C_5 -molecules isopentenyl diphosphate (IPP) and its double bond isomer dimethylallyl diphosphate (DMAPP) but in different cellular compartments ([Fig. 1](#)). Both C_5 compounds are required in specific ratios by the prenyltransferases that subsequently form terpene precursors. The cytosolic mevalonate (MVA) pathway starts from acetyl-CoA and proceeds through the intermediate MVA into IPP and DMAPP and results in the biosynthesis of C_{15} -sesquiterpenes. The MVA pathway is present in all eukaryotes, but plants have an alternative biosynthetic pathway toward IPP and DMAPP called the MEP pathway (methyl-erythritol phosphate pathway) that is localized in the plastid. In tomato trichome plastids, IPP and DMAPP are then converted to C_{10} -, C_{15} -, and C_{20} -precursors that are further converted into mono-, sesqui-, and diterpenes, respectively ([Fig. 1](#)). There are indications that some intermediate molecules are able to cross the plastid membrane ([Dudareva et al., 2005](#)). The glandular trichomes of tomato are rather special in the sense that, besides canonical *trans*-precursors (GPP, geranyl diphosphate; FPP, farnesyl diphosphate; and GGPP, geranylgeranyl diphosphate) they can also convert IPP and DMAPP to *cis*-precursors in plastids. Neryl diphosphate is the *cis*-precursor for many monoterpenes in *Solanum lycopersicum* ([Schilmiller et al., 2009](#)) and in the wild tomato *Solanum habrochaites* plastidial sesquiterpenes are produced from *cis*-FPP ([Sallaud et al., 2009](#)).

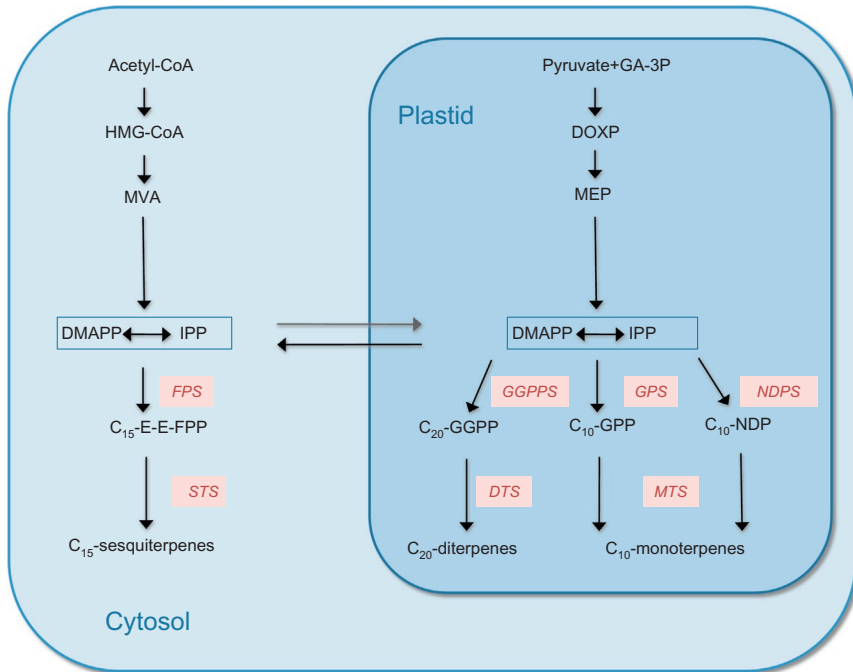


Fig. 1 Schematic overview of terpenoid biosynthesis in trichomes of cultivated tomato. The synthesis of terpenoids takes place in the cytosol through the mevalonate (MVA) pathway, in the plastid via the methyl-erythritol phosphate (MEP) pathway but also (partly) in the mitochondria, ER and/or peroxisomes (not depicted). Abbreviations: *Acetyl-CoA*, acetoacetyl-coenzyme A; *HMG-CoA*, 3-hydroxy-3-methylglutaryl-coenzyme A; *MVA*, mevalonate; *DMAPP*, dimethylallyl diphosphate; *IPP*, isopentenyl diphosphate; *E,E-FPP*, *trans*-farnesyl diphosphate; *FPS*, farnesyl diphosphate synthase; *STS*, sesquiterpene synthase; *GA-3P*, glyceraldehyde-3-phosphate; *DOXP*, 1-deoxy-D-xylulose 5-phosphate; *GGPP*, geranylgeranyl diphosphate; *GGPPS*, geranylgeranyl diphosphate synthase; *DPS*, diterpene synthase; *GPP*, geranyl diphosphate; *GPS*, geranyl diphosphate synthase; *NDP*, neryl diphosphate; *NDPS*, neryl diphosphate synthase; *MTS*, monoterpene synthase.

1.4 Modifying Terpene Production

The initial attempts to increase terpene production in plants were not done in glandular trichomes. [Aharoni et al. \(2003\)](#) showed that ectopic expression of a terpene synthase (FaNES, a strawberry linalool/nerolidol synthase) in *Arabidopsis thaliana* leaves was more successful when targeted to plastids than in the cytosol but did lead to growth retardation upon high expression levels. Targeting a terpene synthase to a specific cellular compartment for generating higher levels of terpenes was also pursued by [Wu et al. \(2006\)](#) and [Huang](#)

et al. (2010). Wu et al. (2006) showed that sesquiterpene production in *Nicotiana tabacum* leaves was elevated as a consequence of directing a naturally cytosolic prenyltransferase (farnesyl diphosphate synthase, FPS) plus a sesquiterpene synthase to the plastid. It was reasoned that this increase in sesquiterpene production in the plastid was caused by the compartmentalized production. In addition to the plastid, IPP isomerase as well as FPS are also present in mitochondria (Cunillera, Boronat, & Ferrer, 1997; Phillips, D'Auria, Gershenzon, & Pichersky, 2008), providing an alternative engineering route. When FaNES was targeted to the mitochondria nerolidol levels were greatly increased compared to control, but also compared to plastid-targeted FaNES, due to the ample availability of FPP in the mitochondria (Kappers et al., 2005). Terpenoid biosynthetic pathways are under regulation of feedback inhibition. It is known that the levels of IPP and DMAPP, but also downstream metabolites such as FPP can influence enzyme activity of upstream precursors (Banerjee et al., 2013; Closa et al., 2010; Tholl & Lee, 2011).

Glandular trichomes are regarded excellent tissues for studying the biosynthesis of specialized plant metabolites, and as especially suitable targets for metabolic engineering (Ennajdaoui et al., 2010; Schillmiller et al., 2008). Using trichome-specific promoters rather than strong ubiquitous promoters has the advantage that possibly toxic products are not produced outside of these specialized tissues and that perturbation of metabolic pathways in the rest of the plant is avoided (Tissier, 2012). However, unexpected negative effects of trichome-targeted expression have been observed, though it is speculated this might be due to the use of an enhancer element in the expression cassette causing ectopic expression in meristematic or progenitor cells (Wu et al., 2012; Zhang et al., 2015).

Despite its potential, relatively few cases of trichome engineering have been reported (Tissier, 2012). Examples of the successful use of trichome-specific promoters include the targeted expression of a taxadiene synthase in tobacco under control of the cembatrienol synthase promoter (Rontein et al., 2008) and a beta-ketothiolase under control of two different cotton trichome promoters (John & Keller, 1996). Two genes from tomato, essential for the production of santalene and bergamotene, were successfully expressed in the glandular trichomes of tobacco (Sallaud et al., 2009). Z-abienol production was successfully engineered in the glandular trichomes of *Nicotiana sylvestris*, which normally does not produce this compound (Sallaud et al., 2012). In tomato, methylketone production was slightly increased by expressing two methylketone synthases under control

of a trichome-specific promoter, while the same genes expressed under control of the strong and ubiquitous cauliflower mosaic virus 35S promoter showed lesions in their leaves (Yu & Pichersky, 2014). Two genes from wild tomato *S. habrochaites*, necessary for the production of 7-epizingiberene were introduced into cultivated tomato under different trichome-specific promoters (*ShMKS1* and *SITPS5*, respectively) leading to production of 7-epizingiberene (Bleeker et al., 2012). Although this was sufficient to validate insect resistance, compared to the wild tomato from which these genes originate, only very low levels of this sesquiterpene were produced. This despite the fact that both the precursor and biosynthetic gene are plastid localized with the less stringently regulated MEP pathway (Bleeker et al., 2012; Sallaud et al., 2009). These examples indicate that optimizing metabolic engineering in trichomes might require additional factors, such as the upstream component of the precursor pathway (Lange et al., 2011).

1.5 Focus

Various promoters of genes expressed specifically in glandular trichomes have been identified (Table 1) which can be used to drive the expression of genes of interest. Here we focus on the use of (a number of) tomato trichome-specific promoters to achieve targeted expression. In this method, we describe the engineering of tomato glandular trichomes, first with a transient expression system to get proof of trichome specificity of promoters, and second a stable expression system for production of specialized compounds. As proof of concept, we describe a case of the latter with the specific over-expression of an FPS. Like Wu et al. (2006), we opted for avian FPS to avoid (post)transcriptional regulation and feedback inhibition, and as the cytosolic MVA flux appears to be much more regulated (Wu et al., 2012), we decided to target the expression of FPS to the plastids of glandular trichome secretory cells mediated by a transit peptide signal sequence.



2. MATERIALS AND TECHNOLOGY

2.1 Transient Transformation of Tomato Trichomes by Microparticle Bombardment

Transient-plant transformation is a broadly applicable and relatively rapid way of checking the expression of designed plant-expression vectors in vivo. For this purpose, promoter activity is often visualized driving GUS (beta-glucuronidase) or fluorescent markers. The *Agrobacterium*-mediated transient-transformation assay (ATTA) is a well-known technique with high

Table 1 List of Trichome-Specific Promoters

Gene	Protein Description	Species	Reporter	Trichome Type	References
<i>AaADS</i>	Amorpha-4,11-diene synthase	<i>Artemisia annua</i>	GUS	Glandular trichomes	Wang et al. (2011)
CYP71AV1	Cytochrome P450	<i>Artemisia annua</i>	GUS	Glandular and nonglandular trichomes	Wang, Han, Kanagarajan, Lundgren, and Brodelius (2013)
<i>AaDDBR2</i>	Artemisinic aldehyde Δ 11(13) reductase	<i>Artemisia annua</i>	GUS	Glandular secretory trichomes	Jiang et al. (2013)
<i>AaGL2</i>	Transcription factor	<i>Artemisia annua</i>	GUS	Glandular and T-shaped trichomes	Jindal, Longchar, Singh, and Gupta (2015)
<i>AaMIXTA-Like1</i>	Transcription factor	<i>Artemisia annua</i>	GUS	Glandular and T-shaped trichomes	Jindal et al. (2015)
SQAPI	Squash aspartic protease inhibitor	<i>Cucurbita maxima</i>	GUS	Long glandular trichomes in mature plant	Anandan, Gatehouse, Marshall, Murray, and Christeller (2009)
<i>NsCBTS-2a</i>	Cembratrien-ol synthase	<i>Nicotiana glauca</i>	GUS	Tall glandular trichomes	Ennajdaoui et al. (2010)
CYP71D16	Cytochrome P450	<i>Nicotiana glauca</i>	GUS	Glandular and nonglandular trichomes	Wang (2002)
<i>T-phylloplanin</i>	Surface-localized protein	<i>Nicotiana glauca</i>	GFP, GUS	Short, procumbent glandular trichomes	Shepherd, Bass, Houtz, and Wagner (2005)
<i>NtLTP1</i>	Lipid transfer protein	<i>Nicotiana glauca</i>	GFP, GUS	Long glandular trichomes	Choi et al. (2012)

Continued

Table 1 List of Trichome-Specific Promoters—cont'd

Gene	Protein Description	Species	Reporter	Trichome Type	References
<i>NtCPS2</i>	Copalyl diphosphate synthase	<i>Nicotiana tabacum</i>	GUS	Glandular-secreting trichomes	Sallaud et al. (2012)
<i>ShMKS1</i>	Methylketone synthase	<i>Solanum habrochaites</i>	GFP	Type VI glandular trichomes	Akhtar et al. (2013)
<i>ShMKS2</i>	Methylketone synthase	<i>Solanum habrochaites</i>	GFP	Strong in type VI, weak in other types	Yu and Pichersky (2014)
<i>SlASAT4</i>	Acylsucrose acyltransferase	<i>Solanum lycopersicum</i>	GFP	Type I and IV glandular trichomes	Schillmiller, Charbonneau, and Last (2012)
<i>SlEOT1</i>	Transcription factor	<i>Solanum lycopersicum</i>	GUS–sYFP1	Type VI glandular trichomes	Spyropoulou, Haring, and Schuurink (2014)
<i>SlTPS5</i>	Linalool synthase	<i>Solanum lycopersicum</i>	GUS–sYFP1	Type VI glandular trichomes	Spyropoulou et al. (2014)
<i>SlASAT3</i>	Acylsucrose acyltransferase	<i>Solanum lycopersicum</i>	GFP	Type I and IV glandular trichomes	Schillmiller et al. (2015)
<i>SlIPMS3</i>	Isopropylmalate synthase	<i>Solanum lycopersicum</i>	GFP, GUS	Type I and IV glandular trichomes	Ning et al. (2015)

Abbreviations: *GUS*, β -glucuronidase; *GFP*, green fluorescent protein; *sYFP1*, yellow fluorescent protein.

transformation efficiency (Kapila, De Rycke, Van Montagu, & Angenon, 1997; Wroblewski, Tomczak, & Michelmore, 2005). However, construct delivery to glandular trichomes by *Agrobacterium* is difficult, possibly due to the trichome barrier cells that warrant specificity of transport to the stalk and head cells (Dell & McComb, 1978; Werker, 2000). Previous promoter studies in glandular trichomes have been done in stably transformed plants (Table 1), which is more time-consuming compared to transient transformation. Here we present a step-wise optimized method to transiently transform glandular trichomes on tomato stems using a microparticle bombardment system. The presented method is exemplified by transforming a GUS-sYFP marker gene driven by the *S. lycopersicum* Terpene Synthase 5 (*SITPS5*) promoter. *SITPS5* has previously been described and demonstrated to encode a linalool synthase with specific expression in type VI tomato trichomes (Falara et al., 2011; van Schie, Haring, & Schuurink, 2007).

2.1.1 Preparation of the p*SITPS5*: GUS-sYFP1 Construct

A 1254-bp genomic sequence from *S. lycopersicum* cv. MoneyMaker upstream of the start codon of *TPS5* (AY840091) was cloned between restriction sites *SacI* (5') and *XbaI*, replacing the 35S promoter of vector pJVII, a pMON999-based vector (Monsanto, St. Louis, MO). The *SITPS5* promoter was cloned upstream of the start codon of *uidA* (GUS) fused to a yellow fluorescent protein (sYFP1) (Kremers, Goedhart, van Munster, & Gadella, 2006), followed by the *Nos* terminator (*tNos*) (Fig. 2A). The final construct was sequenced and then transformed to *Escherichia coli* DH5 α cells, grown overnight at 37°C in Luria Broth containing the appropriate antibiotic, after which the plasmid was isolated using a Midi Plasmid Purification Kit (Qiagen).

2.1.2 Particle Coating with DNA

Thirty-five microliter of gold particle solution (74 mg Au in 1.2 mL 100% ethanol) was placed in a 1.5-mL tube and spun shortly at maximum speed. The ethanol was carefully removed and without disturbing the pellet 1 mL of deionized water MQ was added to the tube. After spinning at 2000 rpm for 2 min, water was removed as much as possible. Next, the appropriate amount of plasmid (25 μ g) was added in 250 μ L of ice-cold MQ water. A quick vortexing step was followed by addition of 250 μ L of ice-cold 2.5 M CaCl₂ and 50 μ L of ice-cold freshly prepared 1.4 mM spermidine solution. Spermidine (05292 Sigma-Aldrich) was melted at 65°C and

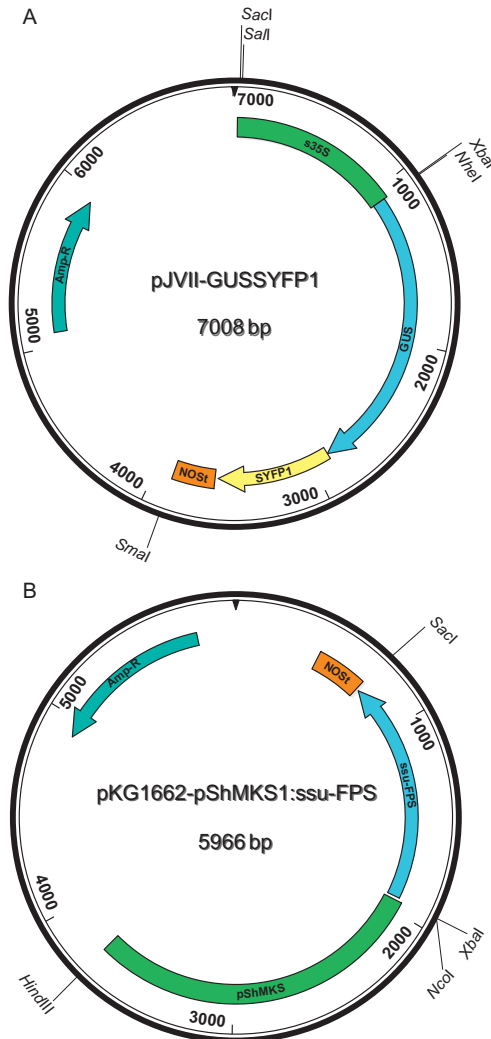


Fig. 2 Maps of plasmids used for engineering. (A) Map of the pJVII–GUS–sYFP plasmid used for transient and stable tomato transformation with trichome-specific promoters. For transient transformation by particle bombardment, the *S. lycopersicum* terpene synthase 5 (*SITPS5*) promoter was used to drive GUS–sYFP. For stable transformation, the promoter of *S. lycopersicum* terpene synthase 9 (*SITPS9*) was used. (B) pKG1662–pShMKS1:ssu-FPS construct used in the engineering of specialized metabolism in tomato trichomes. Abbreviations: *GUS*, β -glucuronidase; *sYFP1*, yellow fluorescent protein; *NOSr*, nopaline synthase terminator; *Amp^r*, β -lactamase ampicillin-resistance gene.

aliquoted under argon and stored at 80°C prior to use. The final mixture was vortexed for 10 min at 4°C and pelleted by spinning for 10 min at 500 rpm. After removal of the supernatant, the pellet was washed six times with 600 μL of 100% ethanol, by pipetting up and down to resuspend the pellet and spinning 1 min at maximum speed. Washing steps were repeated until a homogeneous suspension was obtained without visible gold clumps. Finally, 36 μL of 100% ethanol was added and the pellet was resuspended by vortexing. This amount of DNA-coated microparticles suspension was sufficient to perform three particle bombardments (10 μL each).

2.1.3 Plant Material and Growing Conditions

Tomato plants (*S. lycopersicum* cv. Moneymaker) were grown in soil in a greenhouse with a day/night temperature of 23/18°C and a 16/8 h light/dark regime for 4 weeks. For the transient transformation of trichomes, 3–4 cm long stem pieces were collected and distributed in the center of three Petri dishes containing 1% MS medium immediately before the bombardment.

2.1.4 Bombardment Conditions

Ten microliter of the DNA-coated gold particles (microcarrier) suspension was loaded onto the center of a macrocarrier, desiccated, and delivered according to the procedure described for the Biolistic PDS-1000/He system (<https://www.bio-rad.com>). Specific conditions used were rupture disks of 1100 PSI accelerating pressure, 9 cm target distance and 28 in. Hg vacuum pressure. The Petri dishes were sealed with Parafilm and bombarded stems were incubated in a growth chamber at 26°C for 48 h.

2.1.5 GUS Expression Assay

Forty-eight hours after bombardment, stem pieces were transferred to 15 mL tubes and submerged in 5-bromo-4-chloro-1*H*-indol-3yl-*b*-*D*-glucopyranosiduronic acid (X-Gluc) buffer containing 1 mM X-Gluc, 100 mM sodium phosphate buffer, pH 7.0, and 0.1% Triton X-100 (v/v). After 16 h of incubation at 37°C in the staining buffer, the stem pieces were washed three times with 50 mM sodium phosphate buffer (pH 7.2) and finally resuspended and preserved in the same buffer. Blue staining was assessed using a binocular microscope.

2.1.6 Analysis of Promoter Trichome Specificity

Here examination of the bombarded tomato stems showed that, even though the whole stem was hit by the DNA-coated particles, only trichomes

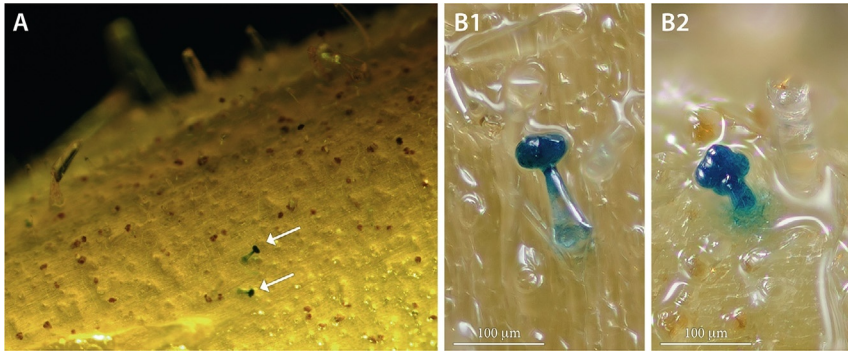


Fig. 3 GUS activity shows trichome-specific activity of the *SITPS5* promoter. β -Glucuronidase (GUS) enzymatic activity in *S. lycopersicum* cv. Moneymaker stem trichomes transformed, by particle bombardment, with the pJVII-pSITPS5:GUS construct containing GUS gene driven by the *S. lycopersicum* terpene synthase 5 (*SITPS5*) promoter. Panoramic view (A) and close up (B1,2) of type VI glandular trichomes expressing SITPS5:GUS. GUS activity was determined by incubation with X-Gluc (16 h). Photograph by Jan van Arkel, IBED, University of Amsterdam.

type VI expressed the GUS gene (Fig. 3A). A closer view on the stained trichomes showed that the blue coloring was not restricted to the four head cells but was also present in the basal stem of the type VI trichome (Fig. 3B1 and B2). This was likely due to diffusion of chloro-bromindigo, to which GUS converts X-Gluc, from the head to adjacent cells as the staining was always found in a diffused pattern in the basal cells. However, it is also possible that the GUS protein itself has diffused (Mascarenhas & Hamilton, 1992).

Taken together, transient transformation by microparticle bombardment as presented here can be a quick and powerful way to assay the specificity of promoters in glandular trichomes. Importantly, trichomes can remain intact after delivery of the plasmid and are still able to synthesize the reporter protein. We therefore conclude this is a proper method to validate new trichome-specific promoters.

2.2 Stable Transformation of Tomato Trichomes

Although particle bombardment can indicate trichome specificity, the number of trichomes hit might not be very high and the procedure is destructive. Alternatively, for a more in-depth study, one can make stable transgenic plants expressing a promoter–reporter construct. In this section, a construct with the *SITPS9* promoter driving a *GUS–sYFP1* fusion was introduced into *S. lycopersicum* cv. Moneymaker to verify the promoter activity of *SITPS9* in stably transformed plants.

2.2.1 Preparation of Construct *pSITPS9: GUS-sYFP1*

A 1557-bp fragment of genomic sequence upstream from the start codon of *SITPS9* was cloned in vector pJVII between restriction sites *SacI* (5') and *NheI* as described in Section 2.1.1 (Fig. 1B). The construct was verified by sequencing and then the expression cassette was transferred to the MCS of the binary vector pBINplus (van Engelen et al., 1995) using the *SacI* and *SmaI* restriction sites. The final construct was transformed to *Agrobacterium tumefaciens* GV3101 (pMP90).

2.2.2 Stable Tomato Transformation

Tomato (*S. lycopersicum* cv. Moneymaker) seeds were surface sterilized in 70% ethanol for 2 min followed by 20 min in 25% hypochlorite. After rinsing five times in sterile water they were placed on germination medium, which consists of 2.5 g L⁻¹ Murashige and Skoog medium-including Gamborg B5 vitamins (MS+Vit B5), 10 g L⁻¹ sucrose, and 0.5 g L⁻¹ MES, pH 5.8 (Cortina & Culianez-Macia, 2004). Seedlings were grown at 25°C and 70% relative humidity for 10 days (90 μmol m⁻² s⁻¹; 8 h dark, 16 h light). Cotyledons of sterile tomato seedlings were cut off, and the tips were removed and sectioned transversely with a scalpel in two fragments. Cotyledon cuts were placed adaxial-side down in 90 × 15 mm Petri dishes containing coculture medium (COM) and incubated for 1 day. The COM medium was composed of 4.5 g L⁻¹ MS+Vit B5, 30 g L⁻¹ sucrose, 0.5 g L⁻¹ MES, 2 mg L⁻¹ zeatin, 0.1 mg L⁻¹ indole-3-acetic acid (IAA), 0.05 mg L⁻¹ 2,4-dichlorophenoxyacetic acid (2,4-D), and 200 μM acetosyringone, pH 5.8. *A. tumefaciens* strain GV3101 (pMP90) harboring the construct, which also contains the selection gene neomycin phosphotransferase (*NPTII*), was grown overnight to OD600 of 0.6–0.8 in modified Luria Bertani medium (1% Bacto Trypton, 0.5% yeast extract, and 0.25% NaCl, pH 7.0). Prior to cocultivation the culture was centrifuged (15 min at 3000 rcf) and the pellet was resuspended in liquid medium consisting of 4.5 g L⁻¹ MS+Vit B5, 30 g L⁻¹ sucrose, and 0.5 g L⁻¹ MES, pH 5.8. Tomato cotyledon explants were removed from the COM plates and transferred to the bacterial suspension for 5 min. Next, they were placed on fresh COM plates after shortly drying on sterile filter paper. After 2 days of cultivation on COM, the explants were placed on postculture medium consisting of 4.5 g L⁻¹ MS+Vit B5, 30 g L⁻¹ sucrose, 0.5 g L⁻¹ MES, 2 mg L⁻¹ zeatin, 0.1 mg L⁻¹ IAA, 200 mg L⁻¹ cefotaxime, and 50 mg L⁻¹ vancomycin, pH 5.8. Another 3 days later, the explants were transferred to shoot-inducing medium (SIM) composed of 4.5 g L⁻¹ MS+Vit B5, 10 g L⁻¹ glucose, 0.5 g L⁻¹ MES, 2 mg L⁻¹ zeatin, 0.1 mg L⁻¹ IAA,

100 mg L⁻¹ kanamycin, and 500 mg L⁻¹ carbenicilin, pH 5.8. The plates were incubated at 25°C, 70% RH under fluorescent light (90 μmol m⁻² s⁻¹; 8 h dark, 16 h light). Explants were transferred to fresh SIM every 2 weeks. Calli were removed from explants when they grew over 0.5 cm in width and transferred to fresh SIM. Emerging shoots from these calli were harvested and placed in sterile plant containers (68 × 66 mm) containing root-inducing medium (RIM). RIM consisted of 4.5 g L⁻¹ MS + Vit B5, 10 g L⁻¹ sucrose, 0.5 g L⁻¹ MES, 0.25 mg L⁻¹ indole-3-butyric acid (IBA), and 200 mg L⁻¹ cefotaxime, pH 5.8. After root formation, the plants were gently removed from the containers and potted in soil.

2.2.3 Transgene Expression

Five independent transgenic primary (T0) lines were obtained after PCR verification of the presence of the *YFP* gene on genomic DNA isolated from leaves. Based on *YFP* expression in T0 stems and leaves, one transgenic line was selected for further analysis. Transgene expression was further confirmed by observing *YFP* fluorescence using an EVOSfl inverted microscope (<http://www.thermofisher.com>) in stems and leaves collected from the transgenic T0 plants. The selected transgenic line exhibited strong *YFP* fluorescence in glandular stem and leaf trichomes (Fig. 4B and D). Fig. 4 shows that fluorescence was specific to the four glandular head cells of the type VI trichomes. This result confirms the trichome-specific expression of *SITPS9* as found by Bleeker, Diergaarde, et al. (2011) and Bleeker, Spyropoulou, et al. (2011). It furthermore shows that the method presented here is suitable to drive transgene expression specifically in the glandular trichomes of stably transformed tomatoes.



3. PROOF OF CONCEPT: TARGETED EXPRESSION OF A TERPENE PRECURSOR GENE IN TOMATO GLANDULAR TRICHOMES

3.1 Stable Trichome-Specific Expression of FPS

3.1.1 Preparation of *pMKS1:ssu-SIFPS* and *pMKS1:ssu-GgFPS* Transgenic Tomatoes

The *ShMKS1* promoter sequence was amplified from genomic DNA of the wild tomato *S. habrochaites* accession PI126449. The 1733-bp fragment was cloned in front of GUS in the pKG1662 vector (patent US2011/0113512A1), of which the 35S promoter was removed using *Hin*-*dIII* and *Nco*I. The signal peptide of the Rubisco-small subunit (*ssu*) (168 bp)

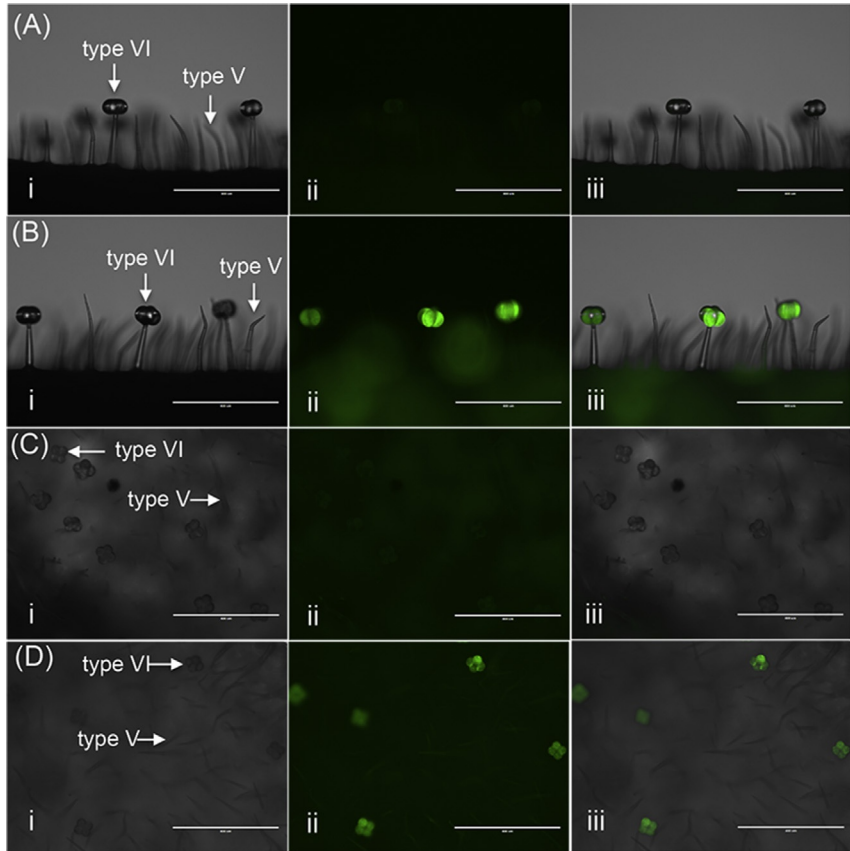


Fig. 4 The *SIFPS9* promoter drives sYFP expression specifically in type VI glandular trichomes of stable transgenic tomato plants. (A) Stem trichomes of untransformed plant. (B) Stem trichomes of tomato transformed with the *SIFPS9:GUS-sYFP* construct. (C) Leaf trichomes of untransformed plants. (D) Leaf trichomes of tomato transformed with the *SIFPS9:GUS-sYFP* construct. Images: (i) Normal light (brightfield), (ii) GFP filter, and (iii) merged image of (i) and (ii). Images were taken using the EVOSfl inverted microscope (<http://www.thermofisher.com>). Arrows indicate type VI glandular trichomes and type V nonglandular trichomes. Scale bars: 400 μ m.

was amplified from *S. lycopersicum* with primers creating *NcoI* ($3'$) and modified *NcoI* ($5'$) ends. *Gallus gallus* FPS (*GgFPS*) was amplified from chicken liver cDNA and digested with *NcoI* and *SacI*. The two gene fragments were ligated into the *ShMKS1* promoter containing pGK1662 vector using the *NcoI* and *SacI* restriction sites, replacing the *GUS* gene. This *pMKS1:ssu-GgFPS:35ST* cassette was subsequently cut out using *HindIII/SacI* and ligated into pBINplus (van Engelen et al., 1995). Similar reactions were done to

create the *ssu-SIFPS* constructs with the exception that *FPS* was amplified from *S. lycopersicum* cDNA. All constructs were checked by sequencing and then transformed to *A. tumefaciens* GV3101 and used to transform tomato *S. lycopersicum* var. MoneyMaker as described in Section 2.2.2 of this chapter.

After stable plant transformation, successfully transformed plants growing on selective medium were checked for the presence of the transgene by PCR. Amplification was done on gDNA from leaf material using a *MKS1* promoter-specific primer and a gene-specific primer. In this way, at least three independent lines, containing either the *ssu-SIFPS* (*ssu-SIFPS* lines) or the *ssu-GgFPS* (*ssu-GgFPS* lines) transgene were selected for further analysis.

3.1.2 Expression Analysis of the Different *FPS* Transgenes

To confirm transgene expression, *FPS* transcript levels in the trichomes of three independently transformed lines were measured by quantitative real-time PCR (qRT-PCR) and compared to trichomes of untransformed plants. Glandular trichomes can contain large amounts of etheric oils and saccharides, which can make it hard to isolate RNA. Commercially available kits often suffice to obtain high quality RNA out of trichomes. However, for high RNA yield, we used an 80°C phenol extraction buffer followed by chloroform:isoamylalcohol phase separation and precipitation in 2 M LiCl. For a full method description, see Verwoerd, Dekker, and Hoekema (1989). After RNA isolation, DNase treatment and cDNA synthesis were done using commercially available kits from Ambion and Fermentas, respectively (www.thermofisher.com).

To quantify the *FPS* transcripts in the *ssu-SIFPS* and *ssu-GgFPS* lines, we used a *FPS*-specific primer pair to amplify the cDNA and normalized their levels to those of *Rubisco conjugating enzyme 1* (*RCE1*).

As shown in Fig. 5, *FPS* levels in the trichomes of three independent *ssu-SIFPS* lines are only moderately elevated compared to untransformed tomato ($n = 3$). It must be noted that these also include basal expression levels of the native, cytosolic, *FPS*. Therefore transgene *ssu-SIFPS* transgene expression is expected to be lower than represented. Interestingly, transgene *GgFPS* expression of the three independent *ssu-GgFPS* lines showed to be much higher compared to the *ssu-SIFPS* lines (Fig. 6).

From these results it appears that *SIFPS* levels are under (post)transcriptional regulation in tomato trichomes. The *ShMKS1* promoter has been shown to be highly active in transgenic tomato trichomes when driving GFP (Akhtar et al., 2013). However, we found only a moderate increase

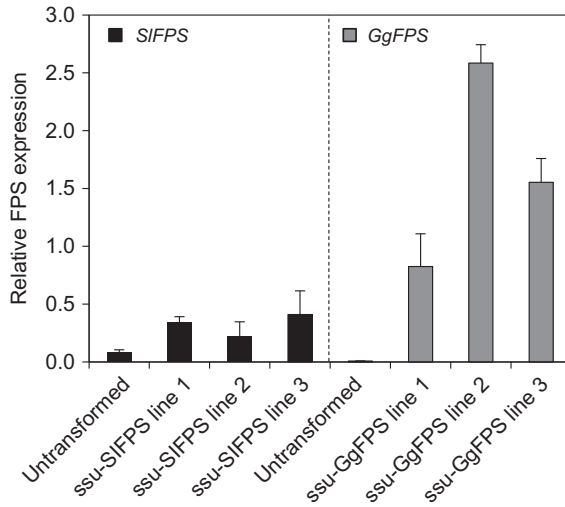


Fig. 5 Higher transcript levels of *SIFPS* and *GgFPS* in transgenic tomato plants. Transcript levels of FPS in three independent transgenic T2 lines were analyzed by quantitative real-time PCR (qRT-PCR). Transcript levels of *ssu-SIFPS* lines were analyzed using *SIFPS*-specific primers (black bars) and transcript levels of *ssu-GgFPS* lines were analyzed using *GgFPS* specific primers (gray bars) with untransformed tomato plants as control. Transcript levels were normalized to *Rubisco conjugating enzyme 1 (RCE1)*. Bars represent means \pm SE ($n=3$). Primers used: *SIFPS*; 5'-acagatgattctcgtaaatggg-3' (f) and 5'-agatagtcctcggttcagcttc-3' (r). *GgFPS*; 5'-ggagagggtacaaagccatcg-3' (f) and 5'-ccttactgtcgatcccaacc-3' (r). *RCE1*; 5'-gattctctcatcaatcattcg-3' (f) and 5'-tttggggacatcttcggatgaa-3' (r).

in *SIFPS* transcript levels. Only driving *FPS* by the trichome-specific and constitutive *ShMKS1* promoter seems not suitable to get much higher expression levels. To boost transcript levels, using a nonplant ortholog of *FPS*, like *GgFPS*, can be a way to circumvent the regulatory mechanism.

3.2 Functional Validation of Trichome Engineering

3.2.1 Redirecting FPS to the Plastid Alters Terpenoid Production in Glandular Trichomes

Successful metabolic engineering largely depends on available precursor molecules to be utilized. Limited availability of precursor molecules makes it hard to produce an altered metabolic trait in transgenic plants. Also, metabolic fluxes between cell compartments in plants are only poorly understood (Rodríguez-Concepción & Boronat, 2015). To see if the enhanced expression levels of *FPS* also result in an increase of the FPP pool, we measured FPP levels from trichomes of 4-week-old *ssu-GgFPS* (line 3) plants.

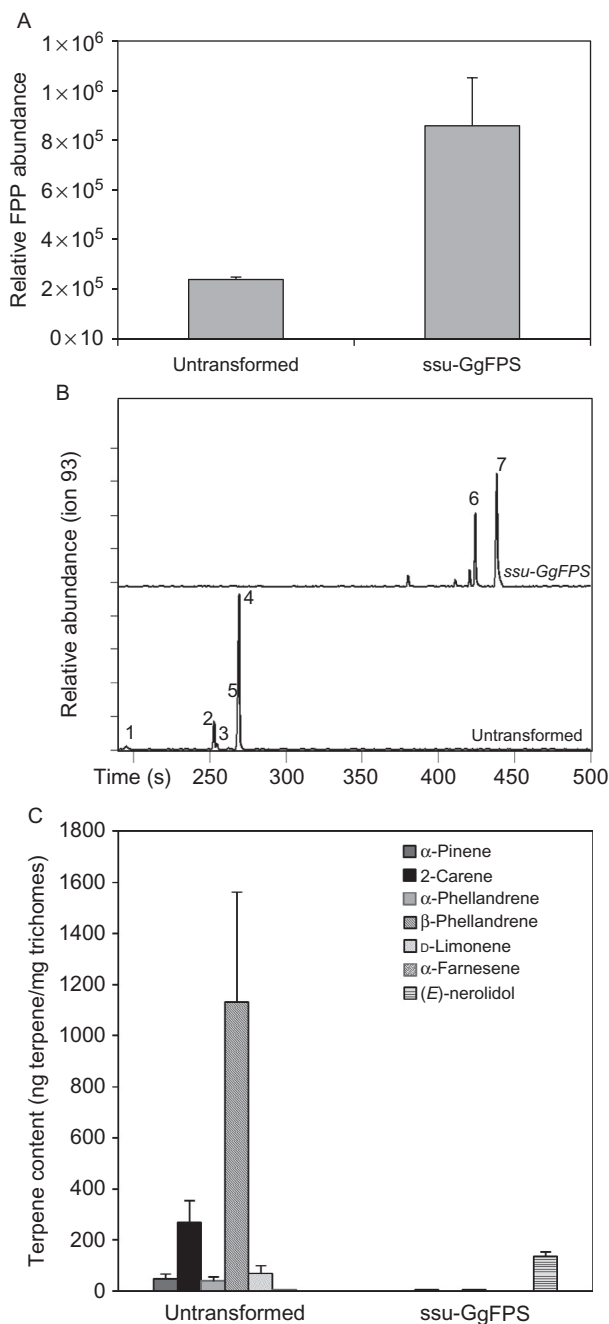


Fig. 6 Modified terpenoid metabolism in the trichomes of *ssu-GgFPS* transformed plants. (A) Measurements of sesquiterpene precursor farnesyl diphosphate (FPP). Bars represent mean values \pm SE ($n=3$). (B) GC-MS chromatograms of trichome extracts of untransformed (lower chromatogram) and *ssu-GgFPS* plants (upper chromatogram). Peaks: (1) α -pinene, (2) 2-carene, (3) α -phellandrene, (4) β -phellandrene, (5) D-limonene, (6) α -farnesene, and (7) (E)-nerolidol. (C) Quantified amounts of terpenes per mg trichomes. Bars represent mean values \pm SE ($n=3$).

The trichome content was extracted using methanol:water (1:3, v/v). Next, the extracts were purified on a CHROMABOND HR-XA column and quantified on LC-MS/MS. For a full description of the method, we refer to Nagel, Gershenzon, and Schmidt (2012).

Fig. 6A shows the relative amounts of FPP detected in the trichomes of untransformed plants and *ssu-GgFPS* transgenics ($n=3$). In the transgenic lines, the relative amount of FPP increased by ~ 3.5 -fold compared to untransformed. So, targeting *GgFPS* to the plastid did not only lead to elevated transcripts but also resulted in increased production of FPP.

We further analyzed the trichomes content of *ssu-GgFPS* transgenic plants by gas chromatography-mass spectrometry (GC-MS). In short, we isolated trichomes from stems of 4 weeks old tomato plants by shortly vortexing stem pieces frozen in liquid nitrogen in a 50-mL Greiner tube. Volatiles were extracted from frozen isolated trichomes with hexane spiked with 5 ng mL^{-1} benzyl acetate. Compounds were separated on a capillary DB-5 column ($10 \text{ m} \times 180 \text{ }\mu\text{m}$, film thickness $0.18 \text{ }\mu\text{m}$; Hewlett-Packard) and mass spectra of eluting compounds were collected on a time-of-flight mass spectrometer (Leco Pegasus III). For a detailed description of the method, see Bleeker et al. (2009). We quantified the peak areas using the available terpene standards and normalized this to the fresh trichome weight.

Strikingly, we observed that terpene production shifted from mainly high levels of monoterpenes in untransformed trichomes, to only low levels of sesquiterpenes in trichomes of *ssu-GgFPS* transgenic lines (Fig. 6B). Compounds detected in untransformed plant samples were identified as α -pinene (1), 2-carene (2), α -phellandrene (3), β -phellandrene (4), and D-limonene (5). In the transgenic lines, two additional terpenes were detected in the trichome extract: α -farnesene (6) and (*E*)-nerolidol (7).

Quantification showed that the total terpene levels dropped dramatically in *ssu-GgFPS* lines. As shown in Fig. 6C, only trace amounts of monoterpenes were detected in the extracts of transgenic plants. Among these, the most abundant monoterpene was β -phellandrene (2.48 ng mg^{-1} trichomes, $\text{SE} \pm 0.27$, $n=3$) which is a massive decrease compared to trichomes of untransformed plants ($1131.69 \text{ ng mg}^{-1}$ trichomes, $\text{SE} \pm 431.93$, $n=3$). While we could not detect any sesquiterpenes in the extracts of untransformed trichomes, *ssu-GgFPS* lines produced α -farnesene (2.17 ng mg^{-1} trichomes, $\text{SE} \pm 0.61$) and (*E*)-nerolidol ($137.42 \text{ ng mg}^{-1}$ trichomes, $\text{SE} \pm 16.46$) as main products.

Although we did not introduce a sesquiterpene synthase in the plastid, additional sesquiterpenes were observed in the transgenic lines. We

therefore assume there is a plastidial terpene synthase that can utilize FPP. In tomato, the plastidial MTS1 (TPS5) normally synthesizes the monoterpene (*R*)-linalool from GPP. However, *in vitro* experiments showed that MTS1 can utilize FPP resulting in the production of (*E*)-nerolidol (van Schie et al., 2007), providing an explanation for the production of (*E*)-nerolidol in the transgenic plants with FPS targeted to the plastid. The drastic depletion of monoterpene synthesis in the transgenic plants remains unexplained.

3.2.2 Biological Relevance of Changing Specialized Metabolites in Trichomes

Plant volatiles can function as a cue in insects' host preference. The whitefly *Bemisia tabaci* is an invasive generalist that constitutes a global problem in vegetable agriculture, as it serves as a vector for the geminiviruses causing crop damages recorded up to 95% (Polston & Anderson, 1997). Changing the volatile blend of commercial tomato, by the introduction of a novel sesquiterpene synthase from a wild species, has shown to improve repellence to *B. tabaci* (Bleeker et al., 2009, 2012). Here it was investigated if the observed change in terpenoid production of the *ssu-GgFPS* lines would also lead to improved repellence. The preference response of *B. tabaci* towards wild-type tomatoes and the transgenic line with an altered volatile blend was assessed in a free-choice bioassay. In this assay, we placed three untransformed, and one transgenic plant of the same age and size in the corners of a $1 \times 1 \text{ m}^2$ (Fig. 7A). A total of 150 whiteflies were released in the middle of the setup and recaptured from the plants after 20 min. In repetitions ($n = 4$) plants were rotated to avoid positional effects. The experiment was performed a total of four times with different *ssu-GgFPS* plants.

B. tabaci displayed significantly less preference for *ssu-GgFPS* plants compared to untransformed plants (Fig. 7B). There was no difference in the percentage of recaptured flies between untransformed lines (26%, 29%, and 32%, $p > 0.05$). In contrast, significantly fewer whiteflies were recaptured from *ssu-GgFPS* transgenic plants (14%, $p < 0.01$). Thus, altering the production of terpenes in the trichomes can affect the plant's attractiveness to whiteflies. Whiteflies and other insects use, among other cues, semi-chemical signals to detect their host plant (Birkett et al., 2004; Bleeker et al., 2009). The major loss of monoterpene production observed in *ssu-GgFPS* plants therefore might have resulted in a loss of cues for *B. tabaci* to select its host plant. On the other hand, *ssu-GgFPS* lines produce (a low amount of) (*E*)-nerolidol that has been previously identified to play a role in the indirect defence of multiple plant species against herbivores

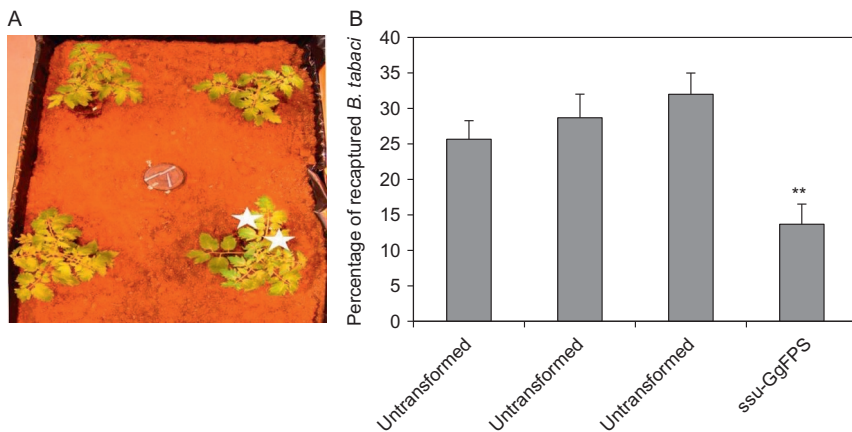


Fig. 7 *ssu-GgFPS* tomato plants are less attractive to whiteflies. (A) Experimental setup: 150 whiteflies (*Bemisia tabaci*) were released in the middle of a 1×1 m² with in three corners untransformed plants and in the fourth corner a *ssu-GgFPS* transgenic plant (indicated with stars). After 20 min, the whiteflies were recaptured from the plants and counted. After each assay, plants were rotated to exclude any positional effect. (B) Percentage of whiteflies that were recaptured on each plant. Significantly less whiteflies were recaptured on *ssu-GgFPS* transgenic plants (ANOVA: $p < 0.01$). Bars represent mean percentage of recaptured whiteflies \pm SE ($n = 12$).

(Bouwmeester, Verstappen, Posthumus, & Dicke, 1999; Degenhardt & Gershenzon, 2000; Kant, Ament, Sabelis, Haring, & Schuurink, 2004; Kappers et al., 2005; Tholl, Sohrabi, Huh, & Lee, 2011). Also, the emission of various sesquiterpenes including 7-epizingiberene, (*R*)-curcumene, and (*E,E*)- α -farnesene have been shown to act as a repellent to insects and small herbivores (Bhatia, Maisnam, Jain, Sharma, & Bhattacharya, 2015; Bleeker, Diergaarde, et al., 2011; Bleeker, Spyropoulou, et al., 2011; Lopez, Quero, Iturrondobeitia, Guerrero, & Goldarazena, 2013). Despite the fact that nerolidol levels in the transgenic lines are low, we cannot exclude that emission of this novel compound played a role in the decreased attractiveness of plants expressing FPS in the plastid.



4. SUMMARY

In this chapter, we described a generic outline for metabolic engineering of glandular trichomes of plants by presenting a case study of tomato glandular trichomes. What is first and foremost needed for the plant of choice are one or more glandular trichome-specific promoters as any specific engineering of the glandular trichome will, in most cases, not affect normal plant

development. [Table 1](#) presents trichome-specific promoters that are readily available but screening of promoters can be rapidly done by particle bombardment of the trichomes of choice. Trichome databases (eg, <http://www.plantrichome.org/trichomedb>) are accessible and since the costs for RNAseq are rapidly coming down, transcriptomes of the trichomes of any plant are now within reach. Upon selecting putative trichome-specific genes, using for instance qRT-PCR on different tissues and organs, the specificity of the corresponding promoters still needs to be tested. Particle bombardment is a very fast and effective tool for this since expression of the reporter genes can be observed within days. In particular, as depicted in [Fig. 3](#), GUS activity can be visualized with X-Gluc as substrate in trichomes. Since the gold particles not only hit the trichomes but also the epidermal cells and the mesophyll cells below, any activity of the promoters in these cells would directly be visible. In addition, one can also use other tissues and organs for particle bombardment to determine if expression is absent using a constitutive promoter as a positive control. Still transgenic plants with the promoter driving the reporter gene ([Fig. 4](#)) are necessary to know if the promoter is also expressed in other cells, if any, beside the glandular trichomes.

It is not necessary to mention that knowledge of the metabolism to be engineered is paramount. Trichomes are amenable to engineering, but even with extensive knowledge of the terpenoid biosynthesis pathways, the outcome may be unpredictable. By simply locating FPS in the plastid, we almost completely eliminated monoterpene biosynthesis ([Fig. 6B and C](#)). The mechanisms involved remain to be resolved. We did measure an increase in FPP levels ([Fig. 6A](#)) in trichomes expressing FPS in their plastids, but we do not know how this influenced, for instance, NDP levels, the substrate for the most abundant monoterpene, β -phellandrene. Our results suggest that high FPP levels inhibited NDPS, similarly as NPP inhibits GGPPS ([Gutensohn et al., 2014](#)). In the cytosol, FPP was thought to serve as a regulator of carbon flux in the cytosolic MVA pathway via feedback inhibition of HMGR ([Closa et al., 2010](#)). In addition, the plastidial linalool synthase that, *in vitro*, also accepts FPP as a substrate now produced the sesquiterpene nerolidol. This indicates that additional targeting of a sesquiterpene synthase to the plastid would result in production of higher levels of the desired sesquiterpenes. Modifiers of these sesquiterpenes, such as P450s, could then be added as well, under control of trichome-specific promoters.

ACKNOWLEDGMENTS

Ludek Tikovsky and Harold Lemereis are acknowledged for taking care of the tomato plants.

REFERENCES

- Aharoni, A., Giri, A. P., Deuerlein, S., Griepink, F., de Kogel, W.-J., Verstappen, F. W., et al. (2003). Terpenoid metabolism in wild-type and transgenic Arabidopsis plants. *Plant Cell*, *15*, 2866–2884.
- Akhtar, T. A., Matsuba, Y., Schauvinhold, I., Yu, G., Lees, H. A., Klein, S. E., et al. (2013). The tomato cis-prenyltransferase gene family. *Plant Journal*, *73*, 640–652. <http://dx.doi.org/10.1111/tpj.12063>.
- Anandan, A., Gatehouse, L. N., Marshall, R. K., Murray, C., & Christeller, J. T. (2009). Two highly homologous promoters of a squash aspartic protease inhibitor (SQAPI) multigene family exhibit differential expression in transgenic tobacco phloem and trichome cells. *Plant Molecular Biology Reporter*, *27*, 355–364. <http://dx.doi.org/10.1007/s11105-009-0096-1>.
- Banerjee, A., Wu, Y., Banerjee, R., Li, Y., Yan, H., & Sharkey, T. D. (2013). Feedback inhibition of deoxy-D-xylulose-5-phosphate synthase regulates the methylerythritol 4-phosphate pathway. *Journal of Biological Chemistry*, *288*, 16926–16936.
- Bhatia, V., Maisnam, J., Jain, A., Sharma, K. K., & Bhattacharya, R. (2015). Aphid-repellent pheromone E- β -farnesene is generated in transgenic Arabidopsis thaliana over-expressing farnesyl diphosphate synthase2. *Annals of Botany*, *115*(4), 581–591.
- Birkett, M., Agelopoulos, N., Jensen, K., Jespersen, J. B., Pickett, J., Priejs, H., et al. (2004). The role of volatile semiochemicals in mediating host location and selection by nuisance and disease-transmitting cattle flies. *Medical and Veterinary Entomology*, *18*, 313–322.
- Bleeker, P. M., Diergaarde, P. J., Ament, K., Guerra, J., Weidner, M., Schütz, S., et al. (2009). The role of specific tomato volatiles in tomato-whitefly interaction. *Plant Physiology*, *151*, 925–935.
- Bleeker, P. M., Diergaarde, P. J., Ament, K., Schütz, S., Johné, B., Dijkink, J., et al. (2011). Tomato-produced 7-epizingiberene and R-curcumene act as repellents to whiteflies. *Phytochemistry*, *72*, 68–73.
- Bleeker, P. M., Mirabella, R., Diergaarde, P. J., VanDoorn, A., Tissier, A., Kant, M. R., et al. (2012). Improved herbivore resistance in cultivated tomato with the sesquiterpene biosynthetic pathway from a wild relative. *Proceedings of the National Academy of Sciences of the United States of America*, *109*, 20124–20129.
- Bleeker, P. M., Spyropoulou, E. A., Diergaarde, P. J., Volpin, H., De Both, M. T., Zerbe, P., et al. (2011). RNA-seq discovery, functional characterization, and comparison of sesquiterpene synthases from *Solanum lycopersicum* and *Solanum habrochaites* trichomes. *Plant Molecular Biology*, *77*, 323–336. <http://dx.doi.org/10.1007/s11103-011-9813-x>.
- Bouwmeester, H. J., Verstappen, F. W., Posthumus, M. A., & Dicke, M. (1999). Spider mite-induced (3S)-(*E*)-nerolidol synthase activity in cucumber and lima bean. The first dedicated step in acyclic C11-homoterpene biosynthesis. *Plant Physiology*, *121*, 173–180.
- Choi, Y. E., Lim, S., Kim, H. J., Han, J. Y., Lee, M. H., Yang, Y., et al. (2012). Tobacco NtLTP1, a glandular-specific lipid transfer protein, is required for lipid secretion from glandular trichomes. *Plant Journal*, *70*, 480–491. <http://dx.doi.org/10.1111/j.1365-313X.2011.04886.x>.
- Closa, M., Vranová, E., Bortolotti, C., Bigler, L., Arró, M., Ferrer, A., et al. (2010). The Arabidopsis thaliana FPP synthase isozymes have overlapping and specific functions in isoprenoid biosynthesis, and complete loss of FPP synthase activity causes early developmental arrest. *The Plant Journal*, *63*, 512–525.
- Cortina, C., & Cullianez-Macia, F. A. (2004). Tomato transformation and transgenic plant production. *Plant Cell, Tissue and Organ Culture*, *76*, 269–275. <http://dx.doi.org/10.1023/B:Ticu.0000009249.14051.77>.
- Cunillera, N., Boronat, A., & Ferrer, A. (1997). The Arabidopsis thaliana FPS1 gene generates a novel mRNA that encodes a mitochondrial farnesyl-diphosphate synthase isoform. *Journal of Biological Chemistry*, *272*, 15381–15388.

- Degenhardt, J., & Gershenzon, J. (2000). Demonstration and characterization of (E)-nerolidol synthase from maize: A herbivore-inducible terpene synthase participating in (3E)-4, 8-dimethyl-1,3,7-nonatriene biosynthesis. *Planta*, *210*, 815–822.
- Dell, B., & McComb, A. (1978). Biosynthesis of resin terpenes in leaves and glandular hairs of *Newcastelia viscida*. *Journal of Experimental Botany*, *29*, 89–95.
- Dudareva, N., Andersson, S., Orlova, I., Gatto, N., Reichelt, M., Rhodes, D., et al. (2005). The nonmevalonate pathway supports both monoterpene and sesquiterpene formation in snapdragon flowers. *Proceedings of the National Academy of Sciences of the United States of America*, *102*, 933–938.
- Engene, N., Rottacker, E. C., Kaštovský, J., Byrum, T., Choi, H., Ellisman, M. H., et al. (2012). *Moorea producens* gen. nov., sp. nov. and *Moorea bouillonii* comb. nov., tropical marine cyanobacteria rich in bioactive secondary metabolites. *International Journal of Systematic and Evolutionary Microbiology*, *62*, 1171–1178.
- Ennajaoui, H., Vachon, G., Giacalone, C., Besse, I., Sallaud, C., Herzog, M., et al. (2010). Trichome specific expression of the tobacco (*Nicotiana glauca*) cembratrien-ol synthase genes is controlled by both activating and repressing cis-regions. *Plant Molecular Biology*, *73*, 673–685.
- Falara, V., Akhtar, T. A., Nguyen, T. T., Spyropoulou, E. A., Bleeker, P. M., Schauvinhold, I., et al. (2011). The tomato terpene synthase gene family. *Plant Physiology*, *157*, 770–789. <http://dx.doi.org/10.1104/pp.111.179648>.
- Glas, J. J., Schimmel, B. C., Alba, J. M., Escobar-Bravo, R., Schuurink, R. C., & Kant, M. R. (2012). Plant glandular trichomes as targets for breeding or engineering of resistance to herbivores. *International Journal of Molecular Sciences*, *13*, 17077–17103. <http://dx.doi.org/10.3390/ijms131217077>.
- Gutensohn, M., Nguyen, T. T., McMahon, R. D., Kaplan, I., Pichersky, E., & Dudareva, N. (2014). Metabolic engineering of monoterpene biosynthesis in tomato fruits via introduction of the non-canonical substrate neryl diphosphate. *Metabolic Engineering*, *24*, 107–116.
- Huang, M., Abel, C., Sohrabi, R., Petri, J., Haupt, I., Cosimano, J., et al. (2010). Variation of herbivore-induced volatile terpenes among *Arabidopsis* ecotypes depends on allelic differences and subcellular targeting of two terpene synthases, TPS02 and TPS03. *Plant Physiology*, *153*, 1293–1310.
- Jiang, W., Lu, X., Qiu, B., Zhang, F., Shen, Q., Lv, Z., et al. (2013). Molecular cloning and characterization of a trichome-specific promoter of artemisinic aldehyde $\Delta 11(13)$ reductase (DBR2) in *Artemisia annua*. *Plant Molecular Biology Reporter*, *32*, 82–91. <http://dx.doi.org/10.1007/s11105-013-0603-2>.
- Jindal, S., Longchar, B., Singh, A., & Gupta, V. (2015). Promoters of AaGL2 and AaMIXTA-like1 gene of *Artemisia annua* direct reporter gene expression in glandular and non-glandular trichomes. *Plant Signaling & Behavior*, *10*(12), e1087629. <http://dx.doi.org/10.1080/15592324.2015.1087629>.
- John, M. E., & Keller, G. (1996). Metabolic pathway engineering in cotton: Biosynthesis of polyhydroxybutyrate in fiber cells. *Proceedings of the National Academy of Sciences of the United States of America*, *93*, 12768–12773.
- Kant, M. R., Ament, K., Sabelis, M. W., Haring, M. A., & Schuurink, R. C. (2004). Differential timing of spider mite-induced direct and indirect defenses in tomato plants. *Plant Physiology*, *135*, 483–495.
- Kapila, J., De Rycke, R., Van Montagu, M., & Angenon, G. (1997). An *Agrobacterium*-mediated transient gene expression system for intact leaves. *Plant Science*, *122*, 101–108.
- Kappers, I. F., Aharoni, A., Van Herpen, T. W., Luckerhoff, L. L., Dicke, M., & Bouwmeester, H. J. (2005). Genetic engineering of terpenoid metabolism attracts bodyguards to *Arabidopsis*. *Science*, *309*, 2070–2072.

- Kremers, G.-J., Goedhart, J., van Munster, E. B., & Gadella, T. W. (2006). Cyan and yellow super fluorescent proteins with improved brightness, protein folding, and FRET Förster radius. *Biochemistry*, *45*, 6570–6580.
- Lange, B. M., Mahmoud, S. S., Wildung, M. R., Turner, G. W., Davis, E. M., Lange, I., et al. (2011). Improving peppermint essential oil yield and composition by metabolic engineering. *Proceedings of the National Academy of Sciences of the United States of America*, *108*, 16944–16949.
- Lopez, S., Quero, C., Iturrondobeitia, J. C., Guerrero, Á., & Goldarazena, A. (2013). Electrophysiological and behavioural responses of *Pityophthorus pubescens* (Coleoptera: Scolytinae) to (*E*, *E*)- α -farnesene, (*R*)-(+)-limonene and (*S*)-(-)-verbenone in *Pinus radiata* (Pinaceae) stands in northern Spain. *Pest Management Science*, *69*, 40–47.
- Mascarenhas, J. P., & Hamilton, D. A. (1992). Artifacts in the localization of GUS activity in another of petunia transformed with a CaMV 35S—GUS construct. *The Plant Journal*, *2*, 405–408.
- Nagel, R., Gershenzon, J., & Schmidt, A. (2012). Nonradioactive assay for detecting isoprenyl diphosphate synthase activity in crude plant extracts using liquid chromatography coupled with tandem mass spectrometry. *Analytical Biochemistry*, *422*, 33–38.
- Ning, J., Moghe, G. D., Leong, B., Kim, J., Ofner, I., Wang, Z., et al. (2015). A feedback-insensitive isopropylmalate synthase affects acylsugar composition in cultivated and wild tomato. *Plant Physiology*, *169*, 1821–1835. <http://dx.doi.org/10.1104/pp.15.00474>.
- Phillips, M. A., D'Auria, J. C., Gershenzon, J., & Pichersky, E. (2008). The *Arabidopsis thaliana* type I isopentenyl diphosphate isomerases are targeted to multiple subcellular compartments and have overlapping functions in isoprenoid biosynthesis. *Plant Cell*, *20*, 677–696. <http://dx.doi.org/10.1105/tpc.107.053926>.
- Polston, J. E., & Anderson, P. K. (1997). The emergence of whitefly-transmitted geminiviruses in tomato in the western hemisphere. *Plant Disease*, *81*, 1358–1369.
- Rodríguez-Concepción, M., & Boronat, A. (2015). Breaking new ground in the regulation of the early steps of plant isoprenoid biosynthesis. *Current Opinion in Plant Biology*, *25*, 17–22.
- Rontein, D., Onillon, S., Herbette, G., Lesot, A., Werck-Reichhart, D., Sallaud, C., et al. (2008). CYP725A4 from yew catalyzes complex structural rearrangement of taxa-4 (5), 11 (12)-diene into the cyclic ether 5 (12)-oxa-3 (11)-cyclotaxane. *Journal of Biological Chemistry*, *283*, 6067–6075.
- Sallaud, C., Giacalone, C., Topfer, R., Goepfert, S., Bakaher, N., Rosti, S., et al. (2012). Characterization of two genes for the biosynthesis of the labdane diterpene Z-abienol in tobacco (*Nicotiana tabacum*) glandular trichomes. *Plant Journal*, *72*, 1–17. <http://dx.doi.org/10.1111/j.1365-313X.2012.05068.x>.
- Sallaud, C., Rontein, D., Onillon, S., Jabes, F., Duffe, P., Giacalone, C., et al. (2009). A novel pathway for sesquiterpene biosynthesis from Z,Z-farnesyl pyrophosphate in the wild tomato *Solanum habrochaites*. *Plant Cell*, *21*, 301–317. <http://dx.doi.org/10.1105/tpc.107.057885>.
- Schilmiller, A. L., Charbonneau, A. L., & Last, R. L. (2012). Identification of a BAHD acetyltransferase that produces protective acyl sugars in tomato trichomes. *Proceedings of the National Academy of Sciences of the United States of America*, *109*, 16377–16382. <http://dx.doi.org/10.1073/pnas.1207906109>.
- Schilmiller, A. L., Last, R. L., & Pichersky, E. (2008). Harnessing plant trichome biochemistry for the production of useful compounds. *The Plant Journal*, *54*, 702–711.
- Schilmiller, A. L., Moghe, G. D., Fan, P., Ghosh, B., Ning, J., Jones, A. D., et al. (2015). Functionally divergent alleles and duplicated Loci encoding an acyltransferase contribute to acylsugar metabolite diversity in *Solanum* trichomes. *Plant Cell*, *27*, 1002–1017. <http://dx.doi.org/10.1105/tpc.15.00087>.

- Schillmiller, A. L., Schauvinhold, I., Larson, M., Xu, R., Charbonneau, A. L., Schmidt, A., et al. (2009). Monoterpenes in the glandular trichomes of tomato are synthesized from a neryl diphosphate precursor rather than geranyl diphosphate. *Proceedings of the National Academy of Sciences of the United States of America*, *106*, 10865–10870.
- Shepherd, R. W., Bass, W. T., Houtz, R. L., & Wagner, G. J. (2005). Phylloplanins of tobacco are defensive proteins deployed on aerial surfaces by short glandular trichomes. *Plant Cell*, *17*, 1851–1861. <http://dx.doi.org/10.1105/tpc.105.031559>.
- Simmons, A. T., & Gurr, G. M. (2005). Trichomes of *Lycopersicon* species and their hybrids: Effects on pests and natural enemies. *Agricultural and Forest Entomology*, *7*, 265–276.
- Spyropoulou, E. A., Haring, M. A., & Schuurink, R. C. (2014). Expression of terpenoids 1, a glandular trichome-specific transcription factor from tomato that activates the terpene synthase 5 promoter. *Plant Molecular Biology*, *84*, 345–357. <http://dx.doi.org/10.1007/s11103-013-0142-0>.
- Tholl, D., & Lee, S. (2011). Terpene specialized metabolism in *Arabidopsis thaliana*. *The Arabidopsis book: Vol. 9*. Rockville, MD: American Society of Plant Biologists.
- Tholl, D., Sohrabi, R., Huh, J.-H., & Lee, S. (2011). The biochemistry of homoterpenes—Common constituents of floral and herbivore-induced plant volatile bouquets. *Phytochemistry*, *72*, 1635–1646.
- Tissier, A. (2012). Glandular trichomes: What comes after expressed sequence tags? *The Plant Journal*, *70*, 51–68.
- van Engelen, F. A., Molthoff, J. W., Conner, A. J., Nap, J.-P., Pereira, A., & Stiekema, W. J. (1995). pBINPLUS: An improved plant transformation vector based on pBIN19. *Transgenic Research*, *4*, 288–290.
- van Schie, C. C., Haring, M. A., & Schuurink, R. C. (2007). Tomato linalool synthase is induced in trichomes by jasmonic acid. *Plant Molecular Biology*, *64*, 251–263. <http://dx.doi.org/10.1007/s11103-007-9149-8>.
- Verwoerd, T. C., Dekker, B., & Hoekema, A. (1989). A small-scale procedure for the rapid isolation of plant RNAs. *Nucleic Acids Research*, *17*, 2362.
- Wagner, G. J. (1991). Secreting glandular trichomes: More than just hairs. *Plant Physiology*, *96*, 675–679.
- Wang, E. (2002). Isolation and characterization of the CYP71D16 trichome-specific promoter from *Nicotiana tabacum* L. *Journal of Experimental Botany*, *53*, 1891–1897. <http://dx.doi.org/10.1093/jxb/erf054>.
- Wang, H., Han, J., Kanagarajan, S., Lundgren, A., & Brodelius, P. E. (2013). Trichome-specific expression of the amorpha-4,11-diene 12-hydroxylase (*cyp71av1*) gene, encoding a key enzyme of artemisinin biosynthesis in *Artemisia annua*, as reported by a promoter-GUS fusion. *Plant Molecular Biology*, *81*, 119–138. <http://dx.doi.org/10.1007/s11103-012-9986-y>.
- Wang, Y., Yang, K., Jing, F., Li, M., Deng, T., Huang, R., et al. (2011). Cloning and characterization of trichome-specific promoter of *cpr71av1* gene involved in artemisinin biosynthesis in *Artemisia annua* L. *Molecular Biology*, *45*, 751–758.
- Weinhold, A., & Baldwin, I. T. (2011). Trichome-derived O-acyl sugars are a first meal for caterpillars that tags them for predation. *Proceedings of the National Academy of Sciences of the United States of America*, *108*, 7855–7859.
- Werker, E. (2000). Trichome diversity and development. *Advances in Botanical Research*, *31*, 1–35.
- Wroblewski, T., Tomczak, A., & Micheltore, R. (2005). Optimization of *Agrobacterium*-mediated transient assays of gene expression in lettuce, tomato and *Arabidopsis*. *Plant Biotechnology Journal*, *3*, 259–273.
- Wu, S., Jiang, Z., Kempinski, C., Eric Nybo, S., Husodo, S., Williams, R., et al. (2012). Engineering triterpene metabolism in tobacco. *Planta*, *236*, 867–877. <http://dx.doi.org/10.1007/s00425-012-1680-4>.

- Wu, S., Schalk, M., Clark, A., Miles, R. B., Coates, R., & Chappell, J. (2006). Redirection of cytosolic or plastidic isoprenoid precursors elevates terpene production in plants. *Nature Biotechnology*, *24*, 1441–1447.
- Yu, G., & Pichersky, E. (2014). Heterologous expression of methylketone synthase1 and methylketone synthase2 leads to production of methylketones and myristic acid in transgenic plants. *Plant Physiology*, *164*, 612–622.
- Zhang, H., Niu, D., Wang, J., Zhang, S., Yang, Y., Jia, H., et al. (2015). Engineering a platform for photosynthetic pigment, hormone and membrane-related diterpenoid production in *Nicotiana tabacum*. *Plant & Cell Physiology*, *56*, 2125–2138. <http://dx.doi.org/10.1093/pcp/pcv131>.