



## UvA-DARE (Digital Academic Repository)

### The age-related slow increase in amyloid pathology in APP.V717I mice activates microglia, but does not alter hippocampal neurogenesis

Hoeijmakers, L.; Meerhoff, G.F.; de Vries, J.W.; Ruigrok, S.R.; van Dam, A.-M.; van Leuven, F.; Korosi, A.; Lucassen, P.J.

**DOI**

[10.1016/j.neurobiolaging.2017.09.013](https://doi.org/10.1016/j.neurobiolaging.2017.09.013)

**Publication date**

2018

**Document Version**

Final published version

**Published in**

Neurobiology of Aging

**License**

Article 25fa Dutch Copyright Act

[Link to publication](#)

**Citation for published version (APA):**

Hoeijmakers, L., Meerhoff, G. F., de Vries, J. W., Ruigrok, S. R., van Dam, A.-M., van Leuven, F., Korosi, A., & Lucassen, P. J. (2018). The age-related slow increase in amyloid pathology in APP.V717I mice activates microglia, but does not alter hippocampal neurogenesis. *Neurobiology of Aging*, 61, 112-123. <https://doi.org/10.1016/j.neurobiolaging.2017.09.013>

**General rights**

It is not permitted to download or to forward/distribute the text or part of it without the consent of the author(s) and/or copyright holder(s), other than for strictly personal, individual use, unless the work is under an open content license (like Creative Commons).

**Disclaimer/Complaints regulations**

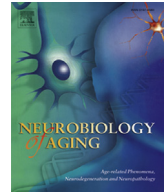
If you believe that digital publication of certain material infringes any of your rights or (privacy) interests, please let the Library know, stating your reasons. In case of a legitimate complaint, the Library will make the material inaccessible and/or remove it from the website. Please Ask the Library: <https://uba.uva.nl/en/contact>, or a letter to: Library of the University of Amsterdam, Secretariat, Singel 425, 1012 WP Amsterdam, The Netherlands. You will be contacted as soon as possible.

*UvA-DARE is a service provided by the library of the University of Amsterdam (<https://dare.uva.nl>)*



Contents lists available at ScienceDirect

## Neurobiology of Aging

journal homepage: [www.elsevier.com/locate/neuaging](http://www.elsevier.com/locate/neuaging)

# The age-related slow increase in amyloid pathology in APP.V7171 mice activates microglia, but does not alter hippocampal neurogenesis



Lianne Hoeijmakers<sup>a</sup>, Gideon F. Meerhoff<sup>a</sup>, Janneke W. de Vries<sup>a</sup>, Silvie R. Ruigrok<sup>a</sup>, Anne-Marie van Dam<sup>b</sup>, Fred van Leuven<sup>c,1</sup>, Aniko Korosi<sup>a,\*,1</sup>, Paul J. Lucassen<sup>a,1</sup>

<sup>a</sup> Brain Plasticity Group, Center for Neuroscience, Swammerdam Institute for Life Sciences, University of Amsterdam, Amsterdam, the Netherlands

<sup>b</sup> Department of Anatomy & Neurosciences, Amsterdam Neuroscience, VU University Medical Center, Amsterdam, the Netherlands

<sup>c</sup> Experimental Genetics Group, LEGTEGG, University of Leuven, Leuven, Belgium

## ARTICLE INFO

## Article history:

Received 5 May 2017

Received in revised form 12 September 2017

Accepted 14 September 2017

Available online 22 September 2017

## Keywords:

APP

Neuroinflammation

Neurogenesis

Doublecortin

Calretinin

Alzheimer's disease

Aging

## ABSTRACT

In Alzheimer's disease, the hippocampus is characterized by abundant deposition of amyloid peptides (amyloid  $\beta$  [A $\beta$ ]) and neuroinflammation. Adult hippocampal neurogenesis (AHN) is a form of plasticity that contributes to cognition and can be influenced by either or both pathology and neuroinflammation. Their interaction has been studied before in rapidly progressing transgenic mouse models with strong overexpression of amyloid precursor protein (APP) and/or presenilin 1. So far, changes in AHN and neuroinflammation remain poorly characterized in slower progressing models at advanced age, which approach more closely sporadic Alzheimer's disease. Here, we analyzed 10- to 26-month-old APP.V7171 mice for possible correlations between A $\beta$  pathology, microglia, and AHN. The age-related increase in amyloid pathology was closely paralleled by microglial CD68 upregulation, which was largely absent in age-matched wild-type littermates. Notably, aging reduced the AHN marker doublecortin, but not calretinin, to a similar extent in wild-type and APP.V7171 mice between 10 and 26 months. This demonstrates that AHN is influenced by advanced age in the APP.V7171 mouse model, but not by A $\beta$  and microglial activation.

© 2017 Elsevier Inc. All rights reserved.

## 1. Introduction

Age is the major risk factor for cognitive decline and neurodegenerative disorders including Alzheimer's disease (AD) (Jagust, 2013; Prince et al., 2013; Small et al., 2002). The hippocampus in particular is implicated in cognition and undergoes functional and volumetric changes during aging (Bobinski et al., 2000; Hara et al., 2012; Pereira et al., 2014; Raz et al., 2004; Small et al., 2002; West et al., 1994, 2004) and is affected early in AD (Barnes et al., 1997; Bizon et al., 2009; Devanand et al., 2007; Frick et al., 1995; Small et al., 2004; Stoub et al., 2010). Indeed, this brain region displays extensive neurodegeneration and functional deficits, both in AD patients and mouse models (Bobinski et al., 2000; Breyhan et al., 2009; Dodart et al., 2000; Fotenos et al., 2005; Jack et al., 1999; Schmitz et al., 2004; Stoub et al., 2010).

\* Corresponding author at: Brain Plasticity Group, Center for Neuroscience, Swammerdam Institute for Life Sciences, University of Amsterdam, Science Park 904, Amsterdam 1098 XH, the Netherlands. Tel.: +31205257626; fax: +31205257709.

E-mail address: [a.korosi@uva.nl](mailto:a.korosi@uva.nl) (A. Korosi).

<sup>1</sup> These authors are shared senior authors.

Different forms of neuronal as well as synaptic plasticity contribute to hippocampal functions. Adult hippocampal neurogenesis (AHN) is the generation of new neurons in the dentate gyrus (DG) and represents a unique form of structural plasticity, implicated in cognition and memory (Deng et al., 2010; Eriksson et al., 1998; Oomen et al., 2014). AHN decreases with age in both rodents (Cameron and McKay, 1999; Heine et al., 2004; Kuhn et al., 1996) and humans (Görizt and Frisén, 2012; Knoth et al., 2010; Manganas et al., 2007; Spalding et al., 2013). It furthermore responds to acute pathological insults like ischemia and epilepsy (Kuhn et al., 2001; Mattiesen et al., 2009; Parent, 2002; Shetty et al., 2012; Taupin, 2006), as well as to more chronic, slower developing pathologies like Parkinson's disease and AD (Boekhoorn et al., 2006; Curtis et al., 2003; De Lucia et al., 2016).

Alterations in AHN have been postulated to contribute to hippocampal dysfunction and/or disease progression (De Lucia et al., 2016; Gomez-Nicola et al., 2014; Maruszak et al., 2014; Mu and Gage, 2011; Richetin et al., 2015). However, considerable variation with respect to AHN is reported in clinical studies, including increased, decreased, or unchanged AHN, and this variance in outcome seems to depend on the disease stage, the patient age, and

the examined AHN markers (Boekhoorn et al., 2006; Briley et al., 2016; Ekonomou et al., 2014; Jin et al., 2004; Li et al., 2008; Perry et al., 2012).

More controlled, preclinical studies have indicated that AHN diminishes when amyloid  $\beta$  (A $\beta$ ) pathology becomes apparent (Demars et al., 2010; Donovan et al., 2006; Haughey et al., 2002a,b; Krezymon et al., 2013; Kuhn et al., 2007; Lucassen et al., 2015; Marlatt and Lucassen, 2010; Mirochnic et al., 2009; Rodríguez et al., 2008; Verret et al., 2007), although conversely exceptions are reported as well (Donovan et al., 2006; Haughey et al., 2002b; Krezymon et al., 2013; Mirochnic et al., 2009; Unger et al., 2016; Verret et al., 2007; Yu et al., 2009). It must be noted that all these findings relied on transgenic mice that strongly overexpress (combinations of) human amyloid precursor protein (APP) and presenilin 1 (PS1) mutant transgenes, resulting in high to very high levels of A $\beta$  early in life. These high A $\beta$  levels cause a rapid development of the pathology, a wanted characteristic for drug development, which however deviates from the progression of the neuropathology in humans. Moreover, in these earlier studies, the transgenic mice were often studied at relatively young ages for practical reasons. Considering that AD is the most typical age-related neurodegenerative disorder, the preclinical mouse model APP.V7171 that exhibits a slow progression of amyloid neuropathology might be a source of novel insights into the relation between AHN and amyloid pathology.

Related to humans, mice over 18 months of age can be considered old age, whereas mice between ages 6 and 12 months can be considered adults (Flurkey et al., 2007). APP.V7171 mice first develop amyloid plaques in the entorhinal cortex around 10 months of age. Soon after this, the plaques appear in the subiculum and other hippocampal subregions of APP.V7171 mice, where it further develops to more extensive pathological levels by 15–18 months of age (Dewachter et al., 2000a,b; Heneka et al., 2005; Moechars et al., 1999; Tanghe et al., 2010).

Besides amyloid-induced alterations in AHN, neuro-inflammatory responses can modulate AHN as well, and in particular, microglia are thought to be instrumental (De Lucia et al., 2016; Ekdahl et al., 2009; Gebara et al., 2013; Olmos-Alonso et al., 2016; Sierra et al., 2010, 2014; Solano Fonseca et al., 2016; Varnum et al., 2015). Preclinical and clinical studies have revealed an association between brain aging and enhanced inflammatory signaling by microglia (Cribbs et al., 2012; Deng et al., 2006; Henry et al., 2009; Holtman et al., 2015; Sheng et al., 1998; Sierra et al., 2007; Von Bernhardi et al., 2011). The inflammatory response of microglia to amyloid pathology (Cribbs et al., 2012; Heneka et al., 2015a,b; Holtman et al., 2015; Marlatt et al., 2014) might hamper neurogenesis and hippocampal plasticity (Barrientos et al., 2006; Biscaro et al., 2012; Chapman et al., 2012; Chugh et al., 2013; Von Bernhardi et al., 2015). It is therefore of interest to consider if and how age- and AD-related changes in microglia in concert with emerging amyloid pathology may affect AHN.

Here, we characterized both cell-associated amyloid as well as amyloid plaque pathology in APP.V7171 mice at age 10, 14, 19, and 26 months and studied whether AHN was altered relative to the age-related changes in neuropathology and microglial activation.

## 2. Methods

### 2.1. Mice

A total of 25 male mice were analyzed in this study: 14 APP.V7171 heterozygous mice (Moechars et al., 1999) and 11 wild-type (WT) mice, all of the FVB/N genetic background. As described before in detail, the APP.V7171 mice produce both A $\beta$ 40 and A $\beta$ 42 peptides in the brain and develop dense-cored plaques that contain primarily

A $\beta$ 42 and are Congo Red and Thioflavin S positive (Dewachter et al., 2000b; Moechars et al., 1999; Van Dorpe et al., 2000). In contrast to highly overexpressing and rapidly progressing mouse models, the APP.V7171 mouse model is characterized by a long preplaque stage, and the first plaques do not emerge until  $\pm$ 12 months of age (Dewachter et al., 2000b; Moechars et al., 1999; Tanghe et al., 2010). Thereby, the model more closely resembles the slow, age-related development of amyloid pathology in human AD patients.

Mice were subdivided into 4 age groups with different stages of amyloid pathology: 10  $\pm$  1 months (WT n = 1, APP.V7171 n = 4), 14  $\pm$  1 months (WT n = 3, APP.V7171 n = 2), 19  $\pm$  1 months (WT n = 1, APP.V7171 n = 6), and 26  $\pm$  1 months (WT n = 6, APP.V7171 n = 2) of age. Mice aged 10–14 months represented the early pathological stages with still few amyloid plaques, whereas mice aged 19–26 months displayed widespread amyloid pathology. All mice were housed with no more than 4 littermates per cage, and all experiments were carried out in accordance with the EU Directive 2010/63/EU on animal welfare for scientific purposes.

### 2.2. Tissue collection

Brains were processed as described previously (Naninck et al., 2015). Briefly, mice were anesthetized by intraperitoneal injection of 120 mg/kg pentobarbital before transcardial perfusion with 0.9% saline, followed by 4% paraformaldehyde in 0.1M phosphate buffer (PB, pH 7.4). The brains were removed and postfixed in 4% paraformaldehyde in 0.1M PB overnight at 4 °C and stored in 0.1M PB containing 0.01% sodium azide at 4 °C.

Before sectioning, brains were kept overnight in 30% sucrose in 0.1M PB for cryoprotection at 4 °C, subsequently frozen and cut in 40- $\mu$ m thick coronal sections with a sliding microtome. Sections were divided over 8 series to obtain an even representation of each brain region per series and collected in an antifreeze solution of 20% glycerol, 30% ethylene glycol, and 50% 0.05M phosphate-buffered saline and stored at  $-20$  °C until further use.

### 2.3. Immunohistochemistry

Immunohistochemistry (IHC) was performed to determine (1) amyloid load; (2) CD68 expressing microglia, the marker present in lysosomes and endosomes of monocytes. IHC for (3) AHN that was based on the number of cells expressing doublecortin (DCX) as a marker of the differentiation of neuroprogenitor cells to postmitotic immature neurons (Couillard-Després et al., 2005) and on the number of cells expressing calretinin (CR) as a marker for more mature postmitotic immature neurons, in addition to DCX (Brandt et al., 2003). Parallel series of brain sections were used for all stainings. Amyloid load in APP.V7171 mice was assessed by IHC using an antibody directed against the N-terminal of the amyloid peptide (rabbit polyclonal anti-A $\beta$ [N], #18584, IBL Japan, GUMMA, Japan; Marlatt et al., 2013). IHC for CD68 marked microglial lysosomal activation (rat anti-mouse CD68 clone FA-11, MCA1957, Serotec, Kidlington, UK; Hoeijmakers et al., 2017). AHN was determined by IHC for DCX (goat anti-DCX, sc-8066, Santa Cruz Biotechnology, Santa Cruz, CA, USA; Naninck et al., 2015) and CR (rabbit anti-calretinin, 7697, Swant, Marly, Switzerland; Naninck et al., 2015).

Sections for amyloid staining were premounted on coated glass slides (Superfrost Plus; Menzel, Braunschweig, Germany) with antigen retrieval by sequential citrate buffer and formic acid pretreatment as described (Christensen et al., 2009; Marlatt et al., 2013). After washing in 0.05M Tris-buffered saline (TBS), and rinsing with sterile water, the slides were incubated in 0.01M citrate buffer (pH 6.0) using a standard microwave protocol at 95 °C–99 °C

for 15 minutes. After cooling to room temperature (RT), antibody retrieval was continued by 3-minute incubation in 88% formic acid.

Next, the pretreated slides for amyloid IHC and the free-floating sections for CD68, DCX and CR staining were washed in 0.05M TBS. Subsequently, slides and sections were incubated in 0.3% H<sub>2</sub>O<sub>2</sub> for 15 minutes to block the endogenous peroxidase activity. Nonspecific antibody binding was blocked by 30-minute incubation in 1% bovine serum albumin, 0.1% Triton X-100 in 0.05M TBS (A $\beta$ , CD68), 2% milk powder in TBS (DCX), 2% normal goat serum, and 0.3% Triton X-100 in 0.05M TBS (CR). Primary antibodies were diluted in a blocking mix (1:1000 A $\beta$ , 1:400 CD68, and 1:5000 CR) or in an incubation mix of 0.25% gelatin, 0.1% Triton X-100, in 0.05M TBS (1:800 DCX), and incubated for 1 hour at RT followed by overnight incubation at 4 °C.

Secondary biotinylated antibodies for A $\beta$  and CR (goat anti-rabbit IgG 1:500 Vector Laboratories, Burlingame, CA, USA), for CD68 (donkey anti-rat IgG 1:500 Vector Laboratories, Burlingame, CA, USA), and for DCX (donkey anti-goat IgG 1:500 Jackson Laboratories, Bar Harbor, ME, USA) were diluted in the same buffers as the primary antibodies and added to the sections for 2 hours at RT, followed by 90-minute incubation with avidin-biotin complex (Vectastain elite ABC peroxidase kit, 1:800 in 0.05M TBS, Vectastain, Brunschwig Chemie, Amsterdam, the Netherlands). DCX staining included an additional signal amplification step for 30 minutes with biotinylated tyramide (1:500 in 0.01% H<sub>2</sub>O<sub>2</sub> in 0.01M TBS) followed by a second incubation of 90 minutes with avidin-biotin complex. Finally, the tissues were thoroughly washed in 0.05M Tris buffer (TB) prior to incubation in 0.5 mg/mL diaminobenzidine, 0.01% H<sub>2</sub>O<sub>2</sub> in 0.05M TB for chromogen development, followed by washing in 0.05M TB. Free-floating sections were mounted on precoated glass slides (Superfrost Plus slides, Menzel-Glaser, Braunschweig, Germany) and cover slipped with Entellan (EMD Millipore, Billerica, MA, USA).

## 2.4. Image analysis and quantification

Quantification of immunoreactive staining was performed by an observer unaware of the experimental conditions. The hippocampus was subdivided over the rostral-caudal axis based on the predetermined bregma points, with all sections from bregma -1.22 to -2.30 mm representing the rostral/dorsal hippocampus, and all sections from bregma -2.70 to -3.64 mm representing the caudal/ventral hippocampus. Six bilateral sections with an approximate intersection distance of 480  $\mu$ m per animal were chosen for analysis for all 4 quantifications (amyloid, CD68, DCX, and CR), thereby including 3 sections representing the rostral hippocampus and 3 sections representing the caudal hippocampus.

### 2.4.1. Amyloid and CD68 immunoreactivity

Amyloid plaque load and CD68 immunoreactivity (referred to as CD68 coverage) were quantified in the hippocampal subregions subiculum, DG, cornu ammonix (CA) by image analysis based on standard thresholding method (Hoeijmakers et al., 2017; Marlatt et al., 2013). The respective regions were viewed and recorded with a Leica CTR5500 microscope (10 $\times$  objective for A $\beta$  and 20 $\times$  objective for CD68) using dedicated software (Leica MetaMorph AF, version 1.6.0; Molecular Devices Sunnyvale, CA, USA). Images were processed using publicly available software (ImageJ; NIH, Bethesda, MD, USA). The respective regions were delineated in all images and converted to 8-bit grayscale pictures. A fixed threshold was set to include all IHC-positive signals in the delineated regions, allowing us to determine the relative areas that define amyloid plaque load and CD68 coverage.

Next, we manually counted the number of CD68+ cells and A $\beta$ + cells. CD68+ cells were sampled in the subiculum (250  $\mu$ m  $\times$  250  $\mu$ m area), CA1 (250  $\mu$ m  $\times$  250  $\mu$ m area), and molecular layer of the DG (150  $\mu$ m  $\times$  150  $\mu$ m area) of the aforementioned selected brain sections. The CD68+ individual cell surface ( $\mu$ m<sup>2</sup>) was further measured by dividing the CD68+ surface coverage ( $\mu$ m<sup>2</sup>) in the individual squares by the number of counted cells in this area, as a proxy for the changes in CD68 expression at the individual cell level. The number of A $\beta$ + cells is referred to as cell-associated and intraneuronal amyloid (Christensen et al., 2009; Jeong et al., 2006; LaFerla et al., 2007). In each image, we quantified the cells in a 200  $\mu$ m  $\times$  200  $\mu$ m area in the center of the subiculum and in a 100  $\mu$ m  $\times$  400  $\mu$ m area covering a part of the pyramidal cell layers of CA1 and CA3. Quantification of cell-associated amyloid in CA1 and CA3 pyramidal cell layers were combined to represent the cell-associated amyloid in the CA.

### 2.4.2. DCX and CR immunoreactive cell numbers

DCX immunoreactive cells (DCX+) and CR immunoreactive cells (CR+) were manually quantified at 20 $\times$  magnification (Zeiss Axiophot Microscope, Microfire camera; Optronics, Goleta, CA, USA) using dedicated software (Stereo Investigator software; MicroBrightField, Magdeburg, Germany). DCX+ and CR+ cells were counted in the DG granular cell layer (GCL) and subgranular zone. DCX+ cells were further classified into 3 different developmental stages based on their morphological appearance (Oomen et al., 2010). The proliferative stage represents cells with no or very short, plump processes; the intermediate stage refers to cells with one process approaching or reaching the molecular layer; the postmitotic/immature neuron stage includes cells with dendritic branching into the GCL and/or molecular layer (Oomen et al., 2010).

### 2.4.3. Volume estimation

Estimations of the volumes of GCL, DG, and total hippocampus were based on the Cavalieri principle (Gundersen and Jensen, 1987; Hoeijmakers et al., 2017). A surface estimation of the regions was obtained based on the 6 bilateral hippocampal sections by outlining the contour of the specific region of interest. The total estimated surface was then multiplied by the section thickness (40  $\mu$ m), by the number of series (8), and by the ratio of bilateral hippocampal sections sampled out of the total number of hippocampal sections within a series (6 out of 9).

## 2.5. Statistical analysis

Data graphs present means + standard error of the mean. Statistical outliers were not present in the data, as test by the freely available online Grubb's test (Graphpad software, San Diego, CA, USA). Further statistical analysis was performed with SPSS 22.0 software. Significance was accepted for  $p < 0.05$ . Amyloid pathology in APP.V717I mice was analyzed by 1-way analysis of variance and post hoc analyses were performed using Bonferroni multiple comparison tests. Data of CD68, DCX+ cell numbers, and CR+ cell numbers in WT and APP.V717I mice were analyzed using the two-way analysis of variance model with genotype and age as independent factors. For these analyses, the 2 youngest (10 and 14 months) and 2 oldest (19 and 26 months) age groups were combined in order to compare an early pathological stage (10 and 14 months) with more abundant pathology (19 and 26 months). The relatively low power prevented the assessment of age-specific effects within all 4 age groups. Overall, interparameter relationships were tested using Pearson's bivariate correlation analysis.



### 3. Results

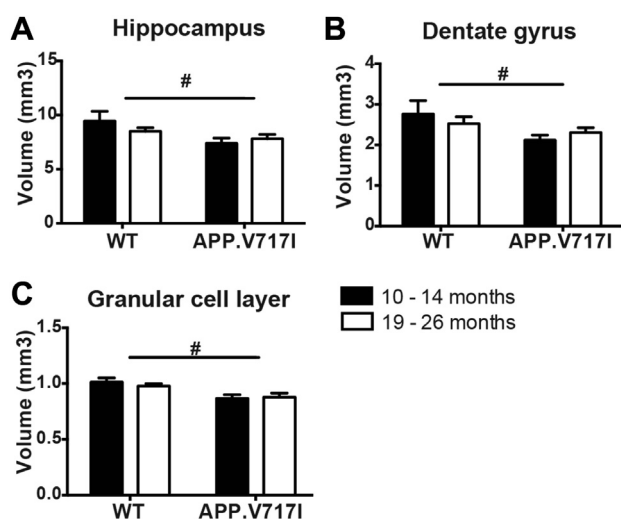
#### 3.1. APP.V7171 expression, but not age, induced hippocampal atrophy

Hippocampal atrophy is one of the hallmarks of AD, and we therefore estimated the volume of the hippocampus with specific attention for DG and GCL. Hippocampal, DG, and GCL volumes were smaller in APP.V7171 compared to age- and gender-matched WT mice, independent of age (Fig. 1A–C; hippocampus: age  $F(1,20) = 0.282$ , ns, genotype  $F(1,20) = 7.773$ ,  $p = 0.011$ , interaction  $F(1,20) = 1.886$ , ns; DG: age  $F(1,20) = 0.020$ , ns, genotype  $F(1,20) = 6.278$ ,  $p = 0.021$ , interaction  $F(1,20) = 1.522$ , ns; GCL: age  $F(1,21) = 0.105$ , ns, genotype  $F(1,21) = 13.708$ ,  $p < 0.001$ , interaction  $F(1,21) = 0.487$ , ns).

#### 3.2. Amyloid pathology increased with age in APP.V7171 mice

Quantification confirmed the age-related progression of amyloid pathology between 10- and 26-month-old APP.V7171 mice, which was brain region specific (Fig. 2A and B). Amyloid load was low at 10–14 months of age in all brain regions and progressed at older age, primarily in the subiculum (Fig. 2C,  $F(3,10) = 17.704$ ,  $p < 0.001$ ; Bonferroni post hoc test 10 months vs. 19 months  $p < 0.001$ , 10 months vs. 26 months  $p = 0.011$ , 14 months vs. 19 months  $p = 0.005$ , 14 months vs. 26 months  $p = 0.047$ ). Amyloid plaque load was further elevated in DG and CA at 26 months of age (Fig. 2D and E; DG:  $F(3,10) = 7.166$ ,  $p = 0.007$ ; Bonferroni post hoc test 10 months vs. 26 months  $p = 0.009$ , 14 months vs. 26 months  $p = 0.023$ , 19 months vs. 26 months  $p = 0.018$ , all other comparisons ns; CA:  $F(3,10) = 7.166$ ,  $p = 0.007$ ; Bonferroni post hoc test 10 months vs. 26 months  $p < 0.001$ , 14 months vs. 26 months  $p < 0.001$ , and 19 months vs. 26 months  $p < 0.001$ ).

Next to amyloid plaque pathology, we quantified cell-associated amyloid, which was not present in the DG, and at only low and stable levels in the CA pyramidal cell layers (Fig. 2F;  $F(3,10) = 2.146$ ,  $p = 0.158$ ). In contrast and remarkably, cell-associated amyloid was high in the subiculum of 10- and 14-month-old mice, but became reduced upon further aging (Fig. 2G;  $F(3,10) = 6.432$ ,  $p = 0.011$ ; Bonferroni post hoc test 10 months vs. 26 months  $p = 0.021$ ).



**Fig. 1.** Hippocampal volume is reduced in APP.V7171 males. The volume of (A) the entire hippocampus, (B) the DG, and (C) the GCL is reduced in APP.V7171 mice, irrespective of age. Annotations: #, genotype effect. Abbreviations: APP, amyloid precursor protein; DG, dentate gyrus; GCL, granular cell layer.

Furthermore, in the subiculum, cell-associated amyloid was inversely correlated with amyloid load (Fig. 2H;  $r = -0.667$ ,  $p = 0.011$ ).

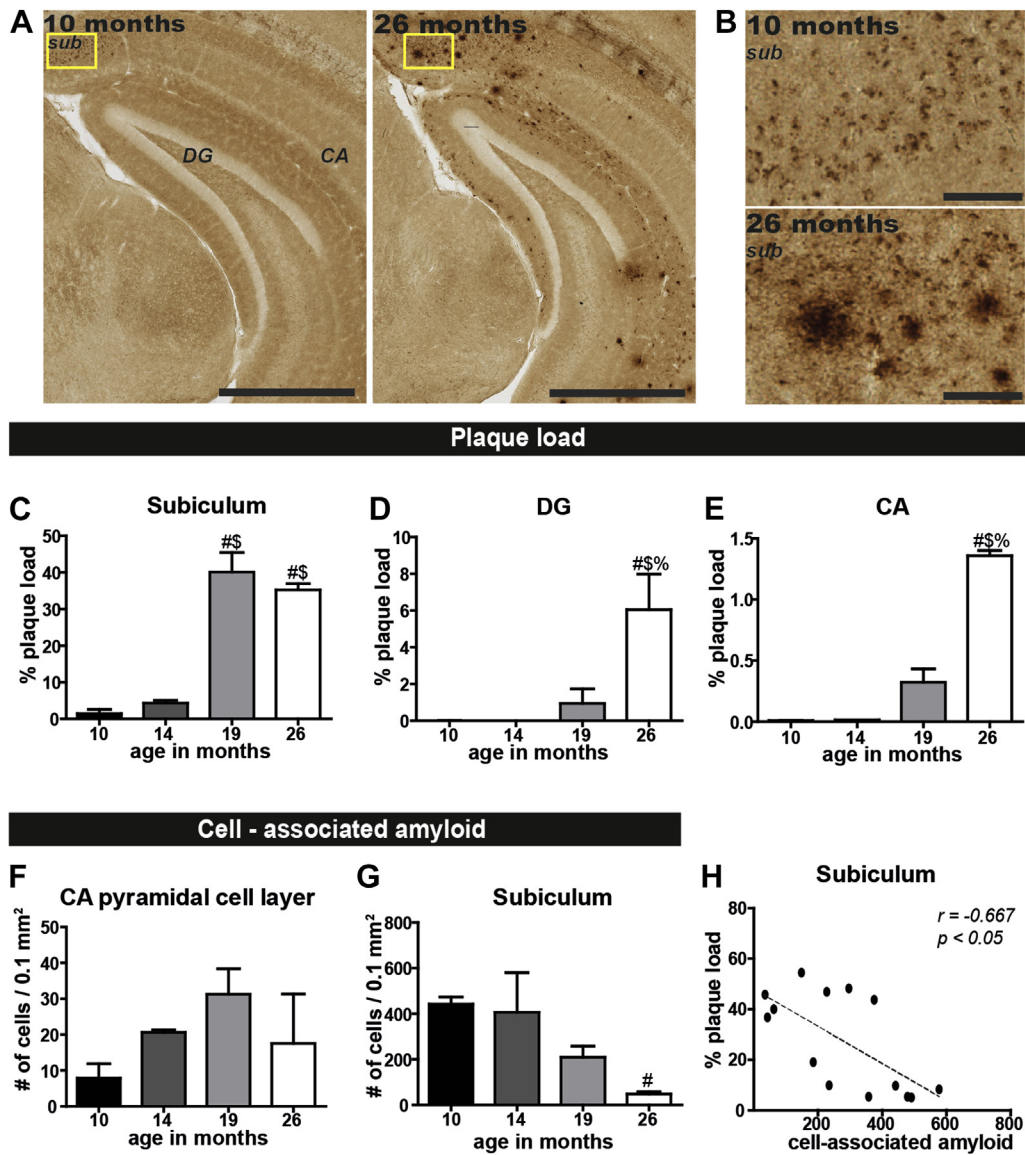
#### 3.3. Microglial phagocytic CD68 increased in relation to A $\beta$ pathology

The microglial response in WT and APP.V7171 mice during aging was analyzed by IHC for the phagocytic marker CD68 (Fig. 3A). This staining showed CD68 immunoreactive cells (Fig. 3B) with a small CD68+ soma and a more punctate CD68+ pattern in their processes in 10-month-old WT and APP.V7171 mice (arrows), cells with a larger CD68+ soma in 26-month-old WT mice (white arrowheads), and cells with thick CD68+ processes that cluster together in the subiculum of 26-month-old APP.V7171 mice (black arrowheads).

CD68 coverage increased overall in the subiculum of APP.V7171 mice as well as in the subiculum of WT mice with advancing age, although this increase tended to be primarily observed in 19- to 26-month-old APP.V7171 mice (Fig. 3C; age  $F(1,20) = 5.453$ ,  $p = 0.030$ , genotype  $F(1,20) = 13.501$ ,  $p = 0.002$ , interaction  $F(1,20) = 3.907$ ,  $p = 0.062$ ). In CA and DG, CD68 coverage was upregulated in APP.V7171 mice, irrespective of age (Fig. 3D and E; CA: age  $F(1,18) = 0.138$ , ns, genotype  $F(1,18) = 7.695$ ,  $p = 0.013$ , interaction  $F(1,18) = 1.728$ , ns; DG: age  $F(1,18) = 0.247$ , ns, genotype  $F(1,18) = 10.614$ ,  $p = 0.004$ , interaction  $F(1,18) = 1.603$ , ns).

In addition, we distinguished whether changes in CD68 coverage resulted from a higher number of CD68+ cells or from changes in CD68 expression at the individual cell level. The number of CD68+ cells in the subiculum was increased in APP.V7171 mice in an age-independent manner (Fig. 3F; age  $F(1,20) = 0.000$ , ns, genotype  $F(1,20) = 19.874$ ,  $p < 0.001$ , interaction  $F(1,20) = 0.403$ , ns). CD68 expression at the individual cell level was significantly increased in the 19- to 26-month-old APP.V7171 mice, compared to all other groups (Fig. 3G; age  $F(1,20) = 5.5336$ ,  $p = 0.029$ , genotype  $F(1,20) = 17.152$ ,  $p < 0.001$ , interaction  $F(1,20) = 4.920$ ,  $p = 0.038$ ; Bonferroni post hoc test: WT 10–14 months vs. APP.V7171 19–26 months  $p < 0.001$ , WT 19–26 months vs. APP.V7171 19–26 months  $p < 0.001$ , APP.V7171 10–14 months vs. APP.V7171 19–26 months  $p < 0.001$ ). The number of CD68+ cells was increased in the CA1 and DG of APP.V7171 mice but not in WT mice (data not shown; CA1: age  $F(1,18) = 0.003$ , ns, genotype  $F(1,18) = 16.980$ ,  $p < 0.001$ , interaction  $F(1,18) = 0.002$ , ns; DG: age  $F(1,18) = 0.138$ , ns, genotype  $F(1,18) = 7.034$ ,  $p < 0.016$ , interaction  $F(1,18) = 0.002$ , ns). CD68 expression at the individual cell level in these regions was not significantly altered by either age or genotype (Fig. 3H, CA1: age  $F(1,18) = 2.002$ , ns, genotype  $F(1,18) = 1.672$ , ns, interaction  $F(1,18) = 1.509$ , ns; DG, data not shown: age  $F(1,18) = 1.453$ , ns, genotype  $F(1,18) = 0.864$ , ns, interaction  $F(1,18) = 0.761$ , ns).

We next questioned whether the observed elevation in microglial CD68 in APP.V7171 mice was associated with either or both types of amyloid pathology studied in these regions. We observed that CD68 coverage overall is positively correlated with amyloid plaque load in subiculum, DG, and CA (data not shown; subiculum:  $r = 0.580$ ,  $p = 0.030$ ; DG:  $r = 0.744$ ,  $p = 0.004$ ; CA:  $r = 0.639$ ,  $p = 0.019$ ). Interestingly, CD68 expression at the individual cell level was correlated with plaque load in both the subiculum and CA1, but not with plaque load in the DG (Fig. 3I: subiculum:  $r = 0.597$ ,  $p = 0.004$ ; CA, data not shown:  $r = 0.647$ ,  $p = 0.017$ ; DG, data not shown:  $r = 0.089$ , ns). CD68 cell numbers did not correlate with the plaque load in these regions (data not shown; subiculum:  $r = 0.180$ , ns; CA:  $r = -0.096$ , ns; DG:  $r = 0.079$ , ns). Interestingly, cell-associated amyloid was inversely correlated with both CD68 individual cell expression and CD68 coverage in the subiculum (Fig. 3J; subiculum CD68 coverage:  $r = -0.718$ ,  $p = 0.004$ ;



**Fig. 2.** Characterization of amyloid pathology in APP.V7171 males. (A) Representative image of A $\beta$  immunoreactive staining in the hippocampus of 10- and 26-month-old APP.V7171 mice. (B) Enlarged images of the subiculum, revealing ample cell-associated amyloid staining in the subiculum at 10 months and abundant plaque pathology at 26 months. Amyloid plaque load increases with age in the (C) subiculum, (D) DG, and (E) CA. (F) The pyramidal cell layer of the CA shows relatively little cell-associated amyloid staining, which remains stable with aging. (G) Cell-associated amyloid is abundant in the subiculum at 10 months but decreases significantly with aging. (H) In the subiculum, cell-associated amyloid correlates with plaque pathology, indicating that cell-associated amyloid reduces when plaque pathology increases in this region. Scale bars: (A) 1000  $\mu$ m, (B) 100  $\mu$ m. Annotations: #, sig. from 10 months; \$, sig. from 14 months; %, sig. from 19 months. Abbreviations: APP, amyloid precursor protein; CA, cornu ammonis; DG, dentate gyrus; Sub, subiculum.

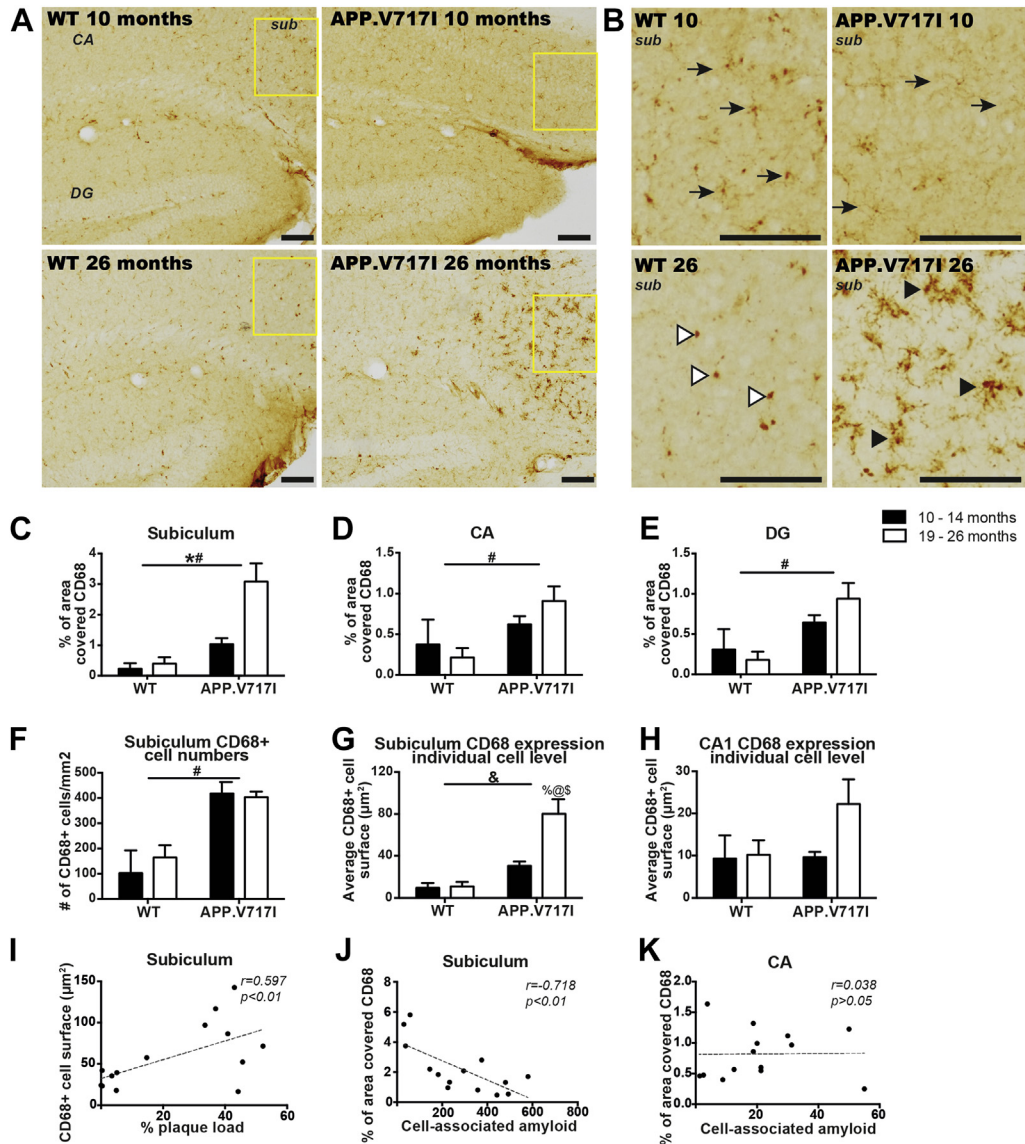
subiculum CD68 individual cell expression, data not shown:  $r = -0.721$ ,  $p = 0.004$ ), but these measures did not correlate in the CA1 (Fig. 3K; CA CD68 coverage:  $r = 0.038$ , ns; CA CD68 individual cell expression, data not shown:  $r = -0.045$ , ns).

#### 3.4. Amyloid pathology in APP.V7171 mice does not correlate with neurogenesis

DCX+ cell numbers (Fig. 4A and B) and CR+ cell numbers (Fig. 5A and B) were quantified in the hippocampus of WT and APP.V7171 mice as a representative measure of AHN. The DCX+ cells were classified based on their developmental stage (Fig. 4B). The number of DCX+ cells decreased with age in both WT and APP.V7171 mice (Fig. 4C, age  $F(1,20) = 5.776$ ,  $p = 0.026$ , genotype  $F(1,20) = 0.107$ , ns, interaction  $F(1,20) = 0.027$ , ns). The decrease was

statistically significant in the rostral part of the hippocampus, but not in the caudal part (rostral: age  $F(1,20) = 8.372$ ,  $p = 0.009$ , genotype  $F(1,20) = 0.068$ , ns, interaction  $F(1,20) = 0.546$ , ns; caudal:  $F(1,20) = 3.592$ ,  $p = 0.073$ , genotype  $F(1,20) = 0.607$ , ns, interaction  $F(1,20) = 0.790$ , ns).

Further classification of DCX+ cells based on their developmental stages, revealed that age specifically reduced the number of DCX+ cells in the intermediate and immature stages, but not the DCX+ cells in the proliferative stage (Fig. 4C; proliferative: age  $F(1,20) = 1.965$ , ns, genotype  $F(1,20) = 0.637$ , ns, interaction  $F(1,20) = 0.116$ , ns; intermediate: age  $F(1,20) = 4.444$ ,  $p = 0.048$ , genotype  $F(1,20) = 0.031$ , ns, interaction  $F(1,20) = 0.036$ , ns; immature neuron: age  $F(1,20) = 5.744$ ,  $p = 0.026$ , genotype  $F(1,20) = 0.090$ , ns, interaction  $F(1,20) = 0.045$ , ns). The numbers of DCX+ cells in the DG of APP.V7171 mice were neither associated



**Fig. 3.** Microglial CD68 coverage is elevated in APP.V7171 males in association with amyloid pathology. (A) Representative images of CD68 immunoreactive staining in the hippocampus of WT and APP.V7171 mice at 10 and 26 months of age. (B) Enlarged images of cells in the subiculum. The arrows point to CD68 immunoreactive cells with a small soma and dotted CD68 pattern in the processes that are particularly present in the 10- to 14-month-old mice. The white arrowheads point to CD68+ cells observed in the subiculum of a 26-month-old WT mouse, with large soma's and little visible CD68 immunoreactive processes. The black arrowheads point the typical clustered CD68 immunoreactive cells with thick processes in the subiculum of a 26-month-old APP.V7171 mouse. (C) CD68 coverage in the subiculum is increased in APP.V7171 mice as well as with aging, although the age-related increase tends to be more prominent in APP.V7171 mice. (D) In the CA, (E) as well as the DG, CD68 coverage is increased by APP.V7171 alone. (F) The number of CD68+ cells is increased in the subiculum of APP.V7171 mice. (G) The expression of CD68 in individual cells in the subiculum is increased in 19- to 26-month-old APP.V7171 mice in comparison to all 3 other groups. (H) There is no significant difference in the CD68 expression at the individual cell level in the CA1. (I) The CD68 expression at the individual cell level in the subiculum is positively correlated with the amount of plaque load in this region. (J) Cell-associated amyloid is negatively correlated with CD68 coverage in the subiculum, but (K) cell-associated amyloid in the pyramidal cell layers of the CA is not associated with CD68 coverage in this region. Scale bars: (A, B) 100  $\mu$ m. Annotations: \*, age effect; #, genotype effect; &, interaction effect. Post hoc annotations: %, sig from WT 10–14 months; @, sig from WT 19–26 months; \$, sig from APP.V7171 10–14 months. Abbreviations: APP, amyloid precursor protein; CA, cornu ammonis; DG, dentate gyrus; Sub, subiculum; WT, wild-type.

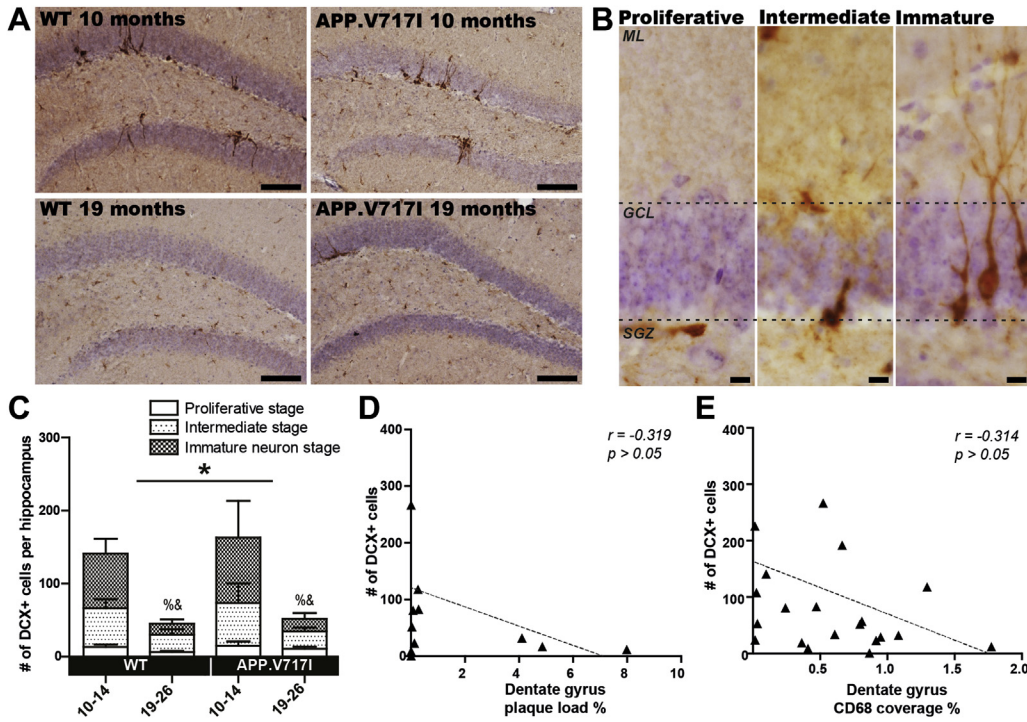
with amyloid plaque load nor with microglial CD68 coverage (Fig. 4D; DCX and plaque load:  $r = -0.319$ , ns; Fig. 4E DCX and CD68:  $r = -0.314$ , ns).

CR+ cells were not altered by the age or genotype of the mice, although the numbers of CR+ cells tended to increase in APP.V7171 mice (Fig. 5C; age  $F(1,20) = 0.23$ , ns, genotype  $F(1,20) = 4.31$ ,  $p = 0.051$ , interaction  $F(1,20) = 1.73$ , ns). The numbers of CR+ cells in the DG were neither associated with amyloid plaque load in APP.V7171 mice nor with microglial CD68 coverage in WT and APP.V7171 mice (Fig. 5D and E; CR and plaque load:  $r = -0.168$ , ns; CR and CD68:  $r = 0.359$ , ns).

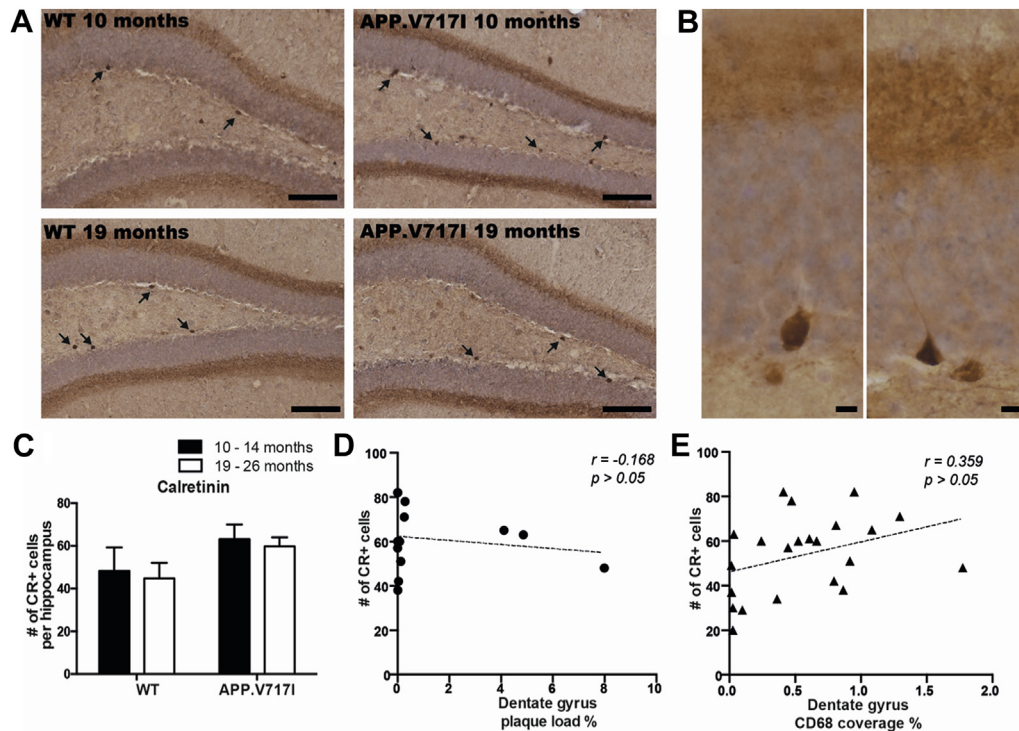
#### 4. Discussion

The current study demonstrates that AHN is reduced by age, but that this decline is neither affected by the progressive accumulation of amyloid pathology nor by the paralleled microglial activation in middle-aged and old APP.V7171 mice. We confirmed and extended on the characterization of age-related accumulation of amyloid pathology in APP.V7171 mice. Amyloid pathology progressed slowly, with plaques appearing most abundantly in the subiculum and a plaque coverage of approximately 40% in this brain region in mice over 19 months of age. Lower levels are present in the DG and CA.





**Fig. 4.** Hippocampal DCX+ cells are reduced in aged WT and APP.V7171 mice. (A) Representative images of DCX immunoreactivity in 10-month-old WT and APP.V7171, as well as 19-month-old WT and APP.V7171 mice. (B) DCX+ cells in the SGZ and GCL can be discriminated in 3 developmental stages as depicted: proliferative, intermediate, and immature neuron. (C) The absolute DCX+ cell numbers are reduced at 19–26 months. Classification of DCX+ cells based on the developmental stages shows this reduction to primarily present in cells during the intermediate and immature neuron stage. (D) DCX+ cell numbers are not associated with A $\beta$  plaque pathology in the DG, (E) or with CD68 coverage in the DG. Scale bars: (A) 100  $\mu$ m, (B) 10  $\mu$ m. Annotations: \*, age effect; %, intermediate stage significantly different from 10–14 months; &, immature neuron stage significantly different from 10–14 months. Abbreviations: APP, amyloid precursor protein; DCX, doublecortin; DG, dentate gyrus; GCL, granular cell layer; ML, molecular layer; SGZ, subgranular zone; WT, wild-type.



**Fig. 5.** Neurogenic CR+ cells in WT and APP.V7171 are not affected by aging. (A) Representative images of CR immunoreactivity in the hippocampus of 10- and 19-month-old WT and APP.V7171 mice. Black arrows point to a couple of CR+ cells in the DG. (B) Two example images of CR+ cells in the SGZ and GCL of the DG are not significantly affected by either age or genotype, although CR+ cell numbers tended to be increased in APP.V7171. CR+ cell counts are not correlated with (D) plaque pathology in the DG or (E) CD68 coverage in the DG. Scale bars: (A) 100  $\mu$ m, (B) 10  $\mu$ m. Abbreviations: APP, amyloid precursor protein; CR, calretinin; DG, dentate gyrus; GCL, granular cell layer; SGZ, subgranular zone; WT, wild-type.



Particularly in the subiculum was an inverse correlation between plaque- and cell-associated amyloid accumulation, with cell-associated amyloid diminishing from age 10 to 14 months onwards, which was paralleled by the increase in amyloid plaque load in this region. The age-related increase in amyloid plaque load in old APP.V7171 mice was further paralleled by increased microglial CD68 expression. The elevated level of microglial CD68 coverage in APP.V7171 was accounted for by both an increase in the number of CD68-expressing microglia, as well as by an upregulation of CD68 expression at the individual cell level, which correlated with the plaque pathology. Except for an age-related increase in CD68+ cell numbers in the subiculum, microglial changes were absent in age-matched WT mice. Interestingly, DCX+ newborn cells in the DG decreased with advancing age in both WT and APP.V7171 mice, whereas the more matured CR+ immature neurons were not significantly affected by age or genotype. These results indicate that the reduction in AHN with aging, measured at different stages, is neither modified by the increased amyloid neuropathology nor by the microglial CD68 changes in APP.V7171 mice.

#### 4.1. Amyloid pathology correlates with microglial lysosomal activity during aging in APP.V7171 mice

Amyloid pathology was primarily present in the form of cell-associated amyloid at 10 months, which diminished with increasing age to give rise to increased extracellular amyloid plaque deposition. Such a pattern and progression of amyloid pathology confirms and extends the earlier, detailed descriptions of these mice using A $\beta$  antibodies, Congo Red, or Thioflavin S staining (Dewachter et al., 2000a,b; Heneka et al., 2005; Moechars et al., 1999; Tanghe et al., 2010; Van Dorpe et al., 2000). Cell-associated or intraneuronal A $\beta$  has been observed in AD patients and in several other mouse models and is generally accepted to precede amyloid plaque pathology (Bayer and Wirths, 2011; Christensen et al., 2009, 2010; Giménez-Llort et al., 2007; Oddo et al., 2006; Wirths et al., 2002; Youmans et al., 2012). In our study, the subiculum in particular displayed early and abundant cell-associated amyloid at middle age, converting to amyloid plaques in old APP.V7171 mice, similar to the inverse relation of intracellular and extracellular A $\beta$  deposition observed in other AD-related mouse models, as well as in human AD brain tissue (Oddo et al., 2006).

The shift in the pathological amyloid pattern appeared most specific for the subiculum, while the DG and CA were less affected in APP.V7171 mice. This dynamic shift in pathology is consistent with the concept that amyloid accumulates mainly in the cell-associated, internal pool at early stages, until amyloid is “trapped” in the extracellular plaque deposits at later stages, preventing further intracellular accumulation and detection (Oddo et al., 2006). However, the still open question remains why the subiculum is subject to the most early and abundant amyloid-related pathological changes: what factor(s) determine(s) this regional selectivity? A logical explanation would be a region-specific difference in promoter-driven transgene expression. Conversely, vascular amyloid deposition is not more abundant in the subiculum than in other brain regions in the APP.V7171 model (Van Dorpe et al., 2000), implying that amyloid deposition in the subiculum is perhaps regulated by other factors than simply the level of APP transgene expression. Aside from this, the observed regional specificity in deposition might be modulated by altered APP and A $\beta$ -peptide intracellular trafficking and/or processing in neurons projecting to the subiculum, a major output region of the hippocampal circuit (Lazarov et al., 2002; Thinakaran and Koo, 2008; Wirths et al., 2002).

We went on to investigate whether changes in amyloid pathology throughout life were associated with alterations in

microglia and their activation. Although aging slightly increased the number of CD68+ cells in the subiculum of WT mice, the progression of the plaque pathology in APP.V7171 mice was paralleled by a strong upregulation in microglial CD68 expression in all hippocampal subregions. This upregulation was primarily accounted for by elevated CD68 expression at the individual cell level and to a lesser extent by an increased number of CD68+ cells. This observation is consistent with reports indicating that the gradual buildup of amyloid pathology triggers a neuroinflammatory response and with changes in microglia indicative of a response to amyloid peptides (Jung et al., 2015; Nagele et al., 2004; Serrano-Pozo et al., 2013; Zhu et al., 2014). Previous studies have demonstrated that the age-related progression of amyloid pathology in APP.V7171 mice is largely driven by an impaired clearance of A $\beta$  peptides, rather than increased production (Dewachter et al., 2000a). The observed shift from cell-associated amyloid to extracellular plaques paralleled by increase in microglial CD68 suggests that microglia might be involved in this process. Indeed, microglia can become dysfunctional with increasing age and/or change their response to amyloid peptides, thereby affecting amyloid pathology and its progression (Bates et al., 2009; Daria et al., 2017; Deane et al., 2009; Heneka et al., 2015b; Hoeijmakers et al., 2017; Zhao et al., 2014).

Activation of microglia in response to accumulating A $\beta$  alters the release of inflammatory factors as well as their support for neuronal functioning and probably for AHN (Bécheade et al., 2013; Biscaro et al., 2012; De Lucia et al., 2016; Ekdahl, 2012; Ekdahl et al., 2009; Fuster-Matanzo et al., 2013). This raised the question as to whether the alterations in A $\beta$  pathology and the concomitant responses may have also altered AHN in APP.V7171 mice.

#### 4.2. Amyloid pathology does not modulate AHN in old APP.V7171 mice

In the DG, DCX+ cells were similarly reduced with advancing age in both WT and APP.V7171 mice, with low numbers of immature cells present at age 19–26 months. In the DG, DCX+ cells were similarly reduced with advancing age in both WT and APP.V7171 mice, with low numbers of immature cells present at age 19–26 months. In addition to the DCX+ cells, the CR+ cells in DG were not reduced with age, and even tended to be increased, in APP.V7171 mice. Very few cells proliferate in the brain of rodents older than 10 months (Ben Abdallah et al., 2010; Heine et al., 2004; Ihunwo and Schliebs, 2010). We consequentially used DCX as the marker of choice to study AHN in older mice, because newborn neurons express DCX from 3 to 14 days after their birth, a relatively long time window that allows labeling of a relatively large number of neurogenic cells (Couillard-Després et al., 2005; Kempermann et al., 2003). In addition, we assessed the CR+ cell numbers to also quantify a later stage of neurogenesis, since CR expression partly overlaps with DCX expression but is still present in 4-week-old cells (Brandt et al., 2003; Kempermann et al., 2004). Interestingly, both DCX+ and CR+ cell numbers failed to correlate with the amyloid or microglial changes in APP.V7171 mice. This indicates that neither the young immature stage nor a later maturational stage of the young neurons is influenced by the (slow) emergence of pathology. It is further important to note that both DCX+ and CR+ cell numbers reflect subsets of the newborn cell pool. The fact that we did not find changes in CR+ numbers, therefore, does not fully exclude the possibility that newborn cell survival per se is altered in these mice. This question should be answered by future studies using timed injections with cell birth-date markers such as BrdU and subsequent co-labeling for NeuN.

The continued reduction in DCX+ cells from middle age up to 19–26 months, notably at ages when amyloid pathology and microgliosis began to increase, further indicates that a “floor effect”

does not relate to the DCX reduction in the younger age groups. The low power in some of the aged groups may possibly have prevented the detection of more subtle effects on AHN in APP.V717I mice. As such, caution is required when considering such (floor) effects. For the same reason, the association between pathology and AHN could not be addressed within the different age groups. Despite this limitation, the lack of an impact of A $\beta$  pathology on AHN indicates that, in contrast to the changes seen in stronger overexpressing APP and PS1 models (Cotel et al., 2012; Demars et al., 2010; Hamilton and Holscher, 2012; Taniuchi et al., 2007), AHN does neither respond to a slower and more gradually progressing development of amyloid pathology in aging APP.V717I mice nor to the concomitant changes in microglia.

To our knowledge, only few other studies have described effects of APP mutations on neurogenesis in old age. Tg2576 mice were reported to (visually) have more proliferating cells than non-transgenic mice at 16 months of age and a general absence of proliferating or DCX+ cells by 18 months of age (Ihunwo and Schliebs, 2010). Eighteen-month-old APP23 mice showed a reduction in DCX+ and CR+ cell numbers, but no difference in the survival of newborn (BrdU+/NeuN+) neurons compared to WT mice (Mirochnic et al., 2009). Interestingly, PS1 knock-in mice showed a reduction in DCX+ neurogenic cells at both 6 and 18 months of age, which aggravated in APP/PS1 double knock-in mice that develop A $\beta$  neuropathology (Zhang et al., 2007). Mutant APP knock-in alone did not lead to alterations in 2 different plasticity markers or in amyloid deposition, indicating that PS1 mutations on their own affect neurogenesis and that APP mutant knock-in requires a secondary modulating factor like a mutated PS1 knock-in to induce A $\beta$  neuropathology and affect neurogenesis. The overexpression of mutant PS1 thus complicates the interpretation of A $\beta$  effects on AHN, because of its intrinsic role in neuronal fate and neurogenesis (Veeraraghavalu et al., 2013). AHN is indeed affected in bigenic mouse lines; DCX+ cells were reduced in 2- to 10-month-old APP751SL/PS1 and APPswe/PS1dE9 mice (Cotel et al., 2012; Demars et al., 2010; Hamilton and Holscher, 2012; Taniuchi et al., 2007), whereas increased DCX+ cell numbers were reported in APPswe/PS1dE9 mice at 10 months of age (Yu et al., 2009). The differences in our findings and what was reported so far in the literature are possibly due to the fact that these AD mouse models were mostly studied at considerably younger ages, contained strong neuronal promoters to reach high overexpression of APP as well as co-expression of mutant PS1 which more than doubles the resulting A $\beta$  levels (Borchelt et al., 1997; Götz et al., 2004). As a result, the rapid progressing of amyloid and associated PS1-mediated pathology is often already present around such a very young age (4–6 months). Consequently, these aggressive models differ considerably from the APP.V717I mice in which amyloid plaque pathology is not observed until 10–12 months of age. We propose a possible explanation for the currently observed lack of impact of amyloid pathology on AHN. In mouse models with early and rapid development of amyloid pathology, the high A $\beta$  levels will impact all cellular processes already at considerably younger ages than in our current model. At such young age, the level of neurogenesis is higher and might be more responsive. The neurogenic pool in the more rapidly progressing AD models will therefore be more vulnerable to the pathological changes. These differences make neurogenic progression, in particular, in single-APP-mutant models, an interesting topic for future studies. Furthermore, such studies should also consider the inclusion of (aging) female mice, given the changing levels of sex-hormone levels over the lifespan that might impact neurogenesis differentially with age (Duarte-Guterman et al., 2015; Pawluski et al., 2009). Such differential, sex-specific effects are indeed reported for hippocampal plasticity and pathological progression in AD mouse models (Richetin et al., 2017; Rodríguez et al., 2008).

The lack of reduction in DCX+ and CR+ cells in the current APP.V717I model suggest that AHN is not affected by the progression of amyloid pathology at these older ages. Modeling of amyloid pathology based on multiple clinical imaging studies in AD patients suggests it to follow a sigmoidal buildup over time, starting in a slowly progressive manner, evolving into the extensive pathological hallmarks commonly present in the elderly (Jack et al., 2013). The slow, age-related accumulation of amyloid in APP.V717I mice therefore better resembles the gradual buildup in humans than the more aggressive models that display rapidly developing amyloid pathology already at younger age. This important age-related component of amyloid pathology in humans, and the observed lack of impact on AHN in old age, highlights the necessity to study AD models, and the consequences of amyloid pathology, in a proper and moderate age-related framework and context.

In AD-patients, the question remains to what extent AHN contributes to their clinical phenotype: is it causally involved in the cognitive deficits, or is it a secondary phenomenon or consequence? The accumulation of A $\beta$  peptides in the human brain is accepted to start several decades before the onset of any cognitive impairments, when both the level and the potential involvement of AHN is still substantial (Spalding et al., 2013; Weissleder et al., 2016). AHN might therefore still be vulnerable in such earlier pathological stage, although this remains unresolved to date.

One more interesting option is whether ‘boosting’ AHN at an earlier age will be beneficial, to e.g. build a cognitive “reserve” and/or to prevent, or at least provide some protection, against neurodegeneration in the elderly (Stern, 2002, 2012). Of note, physical activity in adult and aged rodents has potent neurogenic effects and benefits cognitive performance (Marlatt et al., 2013; Ryan and Nolan, 2016; Van Praag et al., 2005). In addition to physical activity, enrichment and diet are part of the lifestyle factors that were shown to be important in determining the development and progression of AD (Jack et al., 2013; Rolandi et al., 2016; Scheltens et al., 2016). These factors all benefit AHN and cognition in rodents (Maruszak et al., 2014; Mirochnic et al., 2009; Scarmeas et al., 2009; Van Praag et al., 2005). Lifestyle factors that impact AHN may thus be influential in AD patients (Grande et al., 2014; Kandola et al., 2016; Singh et al., 2014; Sofi et al., 2011; Vivar et al., 2013), making AHN an interesting substrate to study in relation to cognitive reserve and its possible role in providing protection against age-related cognitive decline and AD.

#### 4.3. Implications of this study

The current study highlights that, in contrast to previous studies using rapidly progressing mouse models, the slower accumulation of amyloid pathology and the parallel microglial responses in APP.V717I mice did not affect AHN during middle age and advanced aging. This data set highlights that AHN is vulnerable to the more early, fast accumulating excessive levels of A $\beta$  peptides present in young adulthood rather than in aged individuals.

#### Disclosure statement

The authors declare no competing interests.

#### Acknowledgements

This research is funded by ISAO/Alzheimer Nederland (LH, AK, and PJJ), NWO PRIOMED (PJJ), and HersenStichting Nederland (PJJ). The authors thank Michael Marlatt for his contribution in the collection of tissue for this study.

## References

- Barnes, C.A., Suster, M.S., Shen, J.M., McNaughton, B.L., 1997. Multistability of cognitive maps in the hippocampus of old rats. *Nature* 388, 272–275.
- Barrientos, R.M., Higgins, E.A., Biedenkapp, J.C., Sprunger, D.B., Wright-Hardesty, K.J., Watkins, L.R., Rudy, J.W., Maier, S.F., 2006. Peripheral infection and aging interact to impair hippocampal memory consolidation. *Neurobiol. Aging* 27, 723–732.
- Bates, K.A., Verdile, G., Li, Q.-X., Ames, D., Hudson, P., Masters, C.L., Martins, R.N., 2009. Clearance mechanisms of Alzheimer's amyloid- $\beta$  peptide: implications for therapeutic design and diagnostic tests. *Mol. Psychiatry* 14, 469–486.
- Bayer, T.A., Wirths, O., 2011. Intraneuronal A $\beta$  as a trigger for neuron loss: can this be translated into human pathology? *Biochem. Soc. Trans.* 39, 857–861.
- Béchéde, C., Cantaut-Belarif, Y., Bessis, A., 2013. Microglial control of neuronal activity. *Front. Cell Neurosci* 7, 32.
- Ben Abdallah, N.M.B., Slomianka, L., Vyssotski, A.L., Lipp, H.-P., 2010. Early age-related changes in adult hippocampal neurogenesis in C57 mice. *Neurobiol. Aging* 31, 151–161.
- Biscaro, B., Lindvall, O., Tesco, G., Ekdahl, C.T., Nitsch, R.M., 2012. Inhibition of microglial activation protects hippocampal neurogenesis and improves cognitive deficits in a transgenic mouse model for Alzheimer's disease. *Neurodegener. Dis.* 9, 187–198.
- Bizon, J.L., LaSarge, C.L., Montgomery, K.S., McDermott, A.N., Setlow, B., Griffith, W.H., 2009. Spatial reference and working memory across the lifespan of male Fischer 344 rats. *Neurobiol. Aging* 30, 646–655.
- Bobinski, M., de Leon, M.J., Wegiel, J., Desanti, S., Convit, A., Saint Louis, L.A., Rusinek, H., Wisniewski, H.M., 2000. The histological validation of post mortem magnetic resonance imaging-determined hippocampal volume in Alzheimer's disease. *Neuroscience* 95, 721–725.
- Boekhoorn, K., Joëls, M., Lucassen, P.J., 2006. Increased proliferation reflects glial and vascular-associated changes, but not neurogenesis in the presenile Alzheimer hippocampus. *Neurobiol. Dis.* 24, 1–14.
- Borchelt, D.R., Ratovitski, T., van Lare, J., Lee, M.K., Gonzales, V., Jenkins, N.A., Copeland, N.G., Price, D.L., Sisodia, S.S., 1997. Accelerated amyloid deposition in the brains of transgenic mice coexpressing mutant presenilin 1 and amyloid precursor proteins. *Neuron* 19, 939–945.
- Brandt, M.D., Jessberger, S., Steiner, B., Kronenberg, G., Reuter, K., Bick-Sander, A., Behrens, W.V.D., Kempermann, G., 2003. Transient calretinin expression defines early postmitotic step of neuronal differentiation in adult hippocampal neurogenesis of mice. *Mol. Cell. Neurosci.* 24, 603–613.
- Breyhan, H., Wirths, O., Duan, K., Marcello, A., Rettig, J., Bayer, T.A., 2009. APP/PS1KI bigenic mice develop early synaptic deficits and hippocampus atrophy. *Acta Neuropathol.* 117, 677–685.
- Briley, D., Ghirardi, V., Woltjer, R., Renck, A., Zolochovska, O., Tagliatalata, G., Micci, M.-A., 2016. Preserved neurogenesis in non-demented individuals with AD neuropathology. *Sci. Rep.* 6, 27812.
- Cameron, H.A., McKay, R., 1999. Restoring production of hippocampal neurons in old age. *Nat. Neurosci.* 2, 894–897.
- Chapman, T.R., Barrientos, R.M., Ahrendsen, J.T., Hoover, J.M., Maier, S.F., Patterson, S.L., 2012. Aging and infection reduce expression of specific brain-derived neurotrophic factor mRNAs in hippocampus. *Neurobiol. Aging* 33, 832.e1–832.e14.
- Christensen, D.Z., Bayer, T.A., Wirths, O., 2009. Formic acid is essential for immunohistochemical detection of aggregated intraneuronal A $\beta$  peptides in mouse models of Alzheimer's disease. *Brain Res.* 1301, 116–125.
- Christensen, D.Z., Schneider-Axmann, T., Lucassen, P.J., Bayer, T.A., Wirths, O., 2010. Accumulation of intraneuronal A $\beta$  correlates with ApoE4 genotype. *Acta Neuropathol.* 119, 555–566.
- Chugh, D., Nilsson, P., Afjei, S.-A., Bakochi, A., Ekdahl, C.T., 2013. Brain inflammation induces post-synaptic changes during early synapse formation in adult-born hippocampal neurons. *Exp. Neurol.* 250, 176–188.
- Cotel, M.-C., Jawhar, S., Christensen, D.Z., Bayer, T.A., Wirths, O., 2012. Environmental enrichment fails to rescue working memory deficits, neuron loss, and neurogenesis in APP/PS1KI mice. *Neurobiol. Aging* 33, 96–107.
- Couillard-Després, S., Winner, B., Schauback, S., Aigner, R., Vroemen, M., Weidner, N., Bogdahn, U., Winkler, J., Kuhn, H.-G., Aigner, L., 2005. Doublecortin expression levels in adult brain reflect neurogenesis. *Eur. J. Neurosci.* 21, 1–14.
- Cribbs, D.H., Berchtold, N.C., Perreau, V., Coleman, P.D., Rogers, J., Tenner, A.J., Cotman, C.W., 2012. Extensive innate immune gene activation accompanies brain aging, increasing vulnerability to cognitive decline and neurodegeneration: a microarray study. *J. Neuroinflammation* 9, 179.
- Curtis, M.A., Penney, E.B., Pearson, A.G., van Roon, W.M.C., Butterworth, N.J., Dragunow, M., Connor, B., Faull, R.L.M., 2003. Increased cell proliferation and neurogenesis in the adult human Huntington's disease brain. *Proc. Natl. Acad. Sci. U. S. A.* 100, 9023–9027.
- Daria, A., Colombo, A., Llovera, G., Hampel, H., Willem, M., Liesz, A., Haass, C., Tahirovic, S., 2017. Young microglia restore amyloid plaque clearance of aged microglia. *EMBO J.* 36, 583–603.
- De Lucia, C., Rinchon, A., Olmos-Alonso, A., Riecken, K., Fehse, B., Boche, D., Perry, V.H., Gomez-Nicola, D., 2016. Microglia regulate hippocampal neurogenesis during chronic neurodegeneration. *Brain Behav. Immun.* 55, 179–190.
- Deane, R., Bell, R., Sagare, A., Zlokovic, B., 2009. Clearance of amyloid- $\beta$  peptide across the blood-brain barrier: implication for therapies in Alzheimer's disease. *CNS Neurol. Disord. Drug Targets* 8, 16–30.
- Demars, M., Hu, Y.S., Gadadhar, A., Lazarov, O., 2010. Impaired neurogenesis is an early event in the etiology of familial Alzheimer's disease in transgenic mice. *J. Neurosci. Res.* 88, 2103–2117.
- Deng, W., Aimone, J.B., Gage, F.H., 2010. New neurons and new memories: how does adult hippocampal neurogenesis affect learning and memory? *Nat. Rev. Neurosci.* 11, 339–350.
- Deng, X.-H., Bertini, G., Xu, Y.-Z., Yan, Z., Bentivoglio, M., 2006. Cytokine-induced activation of glial cells in the mouse brain is enhanced at an advanced age. *Neuroscience* 141, 645–661.
- Devanand, D.P., Pradhaban, G., Liu, X., Khandji, A., De Santi, S., Segal, S., Rusinek, H., Pelton, G.H., Honig, L.S., Mayeux, R., Stern, Y., Tabert, M.H., de Leon, M.J., 2007. Hippocampal and entorhinal atrophy in mild cognitive impairment: prediction of Alzheimer disease. *Neurology* 68, 828–836.
- Dewachter, I., Van Dorpe, J., Smeijers, L., Gilis, M., Kuiperi, C., Laenen, I., Caluwaerts, N., Moechars, D., Checler, F., Vanderstichele, H., Van Leuven, F., 2000a. Aging increased amyloid peptide and caused amyloid plaques in brain of old APP/V7171 transgenic mice by a different mechanism than mutant presenilin1. *J. Neurosci.* 20, 6452–6458.
- Dewachter, I., Van Dorpe, J., Spittaels, K., Tesseur, I., Van Den Haute, C., Moechars, D., Van Leuven, F., 2000b. Modeling Alzheimer's disease in transgenic mice: effect of age and of presenilin1 on amyloid biochemistry and pathology in APP/London mice. *Exp. Gerontol.* 35, 831–841.
- Dodart, J.C., Mathis, C., Saura, J., Bales, K.R., Paul, S.M., Ungerer, A., 2000. Neuroanatomical abnormalities in behaviorally characterized APP(V717F) transgenic mice. *Neurobiol. Dis.* 7, 71–85.
- Donovan, M.H., Yazdani, U., Norris, R.D., Games, D., German, D.C., Eisch, A.J., 2006. Decreased adult hippocampal neurogenesis in the PDAPP mouse model of Alzheimer's disease. *J. Comp. Neurol.* 495, 70–83.
- Duarte-Guterman, P., Yagi, S., Chow, C., Galea, L.A.M., 2015. Hippocampal learning, memory, and neurogenesis: effects of sex and estrogens across the lifespan in adults. *Horm. Behav.* 74, 37–52.
- Ekdahl, C.T., 2012. Microglial activation - tuning and pruning adult neurogenesis. *Front. Pharmacol.* 3, 41.
- Ekdahl, C.T., Kokaia, Z., Lindvall, O., 2009. Brain inflammation and adult neurogenesis: the dual role of microglia. *Neuroscience* 158, 1021–1029.
- Ekonomou, A., Savva, G.M., Brayne, C., Forster, G., Francis, P.T., Johnson, M., Perry, E.K., Attems, J., Somani, A., Minger, S.L., Ballard, C.G., 2014. Stage-specific changes in neurogenic and glial markers in Alzheimer's disease. *Biol. Psychiatry* 77, 711–719.
- Eriksson, P.S., Perfilieva, E., Bjork-Eriksson, T., Alborn, A.M., Nordborg, C., Peterson, D.A., Gage, F.H., 1998. Neurogenesis in the adult human hippocampus. *Nat. Med.* 4, 1313–1317.
- Flurkey, K., Curren, J.M., Harrison, D.E., 2007. Mouse Models in Aging Research. In: Fox, J.G., Davison, M.T., Quimby, F.W., Barthold, S.W., Newcomer, C.E., Smith, A.L. (Eds.), *The Mouse in Biomedical Research*. Elsevier, Academic Press, Burlington, pp. 637–672.
- Fotinos, A.F., Snyder, A.Z., Girton, L.E., Morris, J.C., Buckner, R.L., 2005. Normative estimates of cross-sectional and longitudinal brain volume decline in aging and AD. *Neurology* 64, 1032–1039.
- Frick, K.M., Baxter, M.G., Markowska, A.L., Olton, D.S., Price, D.L., 1995. Age-related spatial reference and working memory deficits assessed in the water maze. *Neurobiol. Aging* 16, 149–160.
- Fuster-Matanzo, A., Llorens-Martín, M., Hernández, F., Avila, J., 2013. Role of neuroinflammation in adult neurogenesis and Alzheimer disease: therapeutic approaches. *Mediators Inflamm.* 2013, 260925.
- Gebara, E., Sultan, S., Kocher-Braissant, J., Toni, N., 2013. Adult hippocampal neurogenesis inversely correlates with microglia in conditions of voluntary running and aging. *Front. Neurosci.* 7.
- Giménez-Llort, L., Blázquez, G., Cañete, T., Johansson, B., Oddo, S., Tobeña, A., LaFerla, F.M., Fernández-Teruel, A., 2007. Modeling behavioral and neuronal symptoms of Alzheimer's disease in mice: a role for intraneuronal amyloid. *Neurosci. Biobehav. Rev.* 31, 125–147.
- Gomez-Nicola, D., Suzzi, S., Vargas-Caballero, M., Fransén, N.L., Al-Malki, H., Cebrian-Silla, A., Garcia-Verdugo, J.M., Riecken, K., Fehse, B., Perry, V.H., 2014. Temporal dynamics of hippocampal neurogenesis in chronic neurodegeneration. *Brain* 137, 2312–2328.
- Göriz, C., Frisén, J., 2012. Neural stem cells and neurogenesis in the adult. *Cell Stem Cell* 10, 657–659.
- Götz, J., Streffer, J.R., David, D., Schild, A., Hoerndli, F., Pennanen, L., Kurosinski, P., Chen, F., 2004. Transgenic animal models of Alzheimer's disease and related disorders: histopathology, behavior and therapy. *Mol. Psychiatry* 9, 644–683.
- Grande, G., Vanacore, N., Maggione, L., Cucumo, V., Ghirelli, R., Galimberti, D., Scarpini, E., Mariani, C., Clerici, F., 2014. Physical activity reduces the risk of dementia in mild cognitive impairment subjects: a cohort study. *J. Alzheimers Dis.* 39, 833–839.
- Gundersen, H.J.G., Jensen, E.B., 1987. The efficiency of systematic sampling in stereology and its prediction. *J. Microsc.* 147, 229–263.
- Hamilton, A., Holscher, C., 2012. The effect of ageing on neurogenesis and oxidative stress in the APP<sup>swE</sup>/PS1<sup>deltaE9</sup> mouse model of Alzheimer's disease. *Brain Res.* 1449, 83–93.
- Hara, Y., Park, C.S., Janssen, W.G., Roberts, M.T., Morrison, J.H., Rapp, P.R., 2012. Synaptic correlates of memory and menopause in the hippocampal dentate gyrus in rhesus monkeys. *Neurobiol. Aging* 33, 421.e17–421.e28.
- Haughey, N.J., Liu, D., Nath, A., Borchard, A.C., Mattson, M.P., 2002a. Disruption of neurogenesis in the subventricular zone of adult mice, and in human cortical



- neuronal precursor cells in culture, by amyloid  $\beta$ -peptide. *Neuromol. Med.* 1, 125–135.
- Haughey, N.J., Nath, A., Chan, S.L., Borchard, A.C., Rao, M.S., Mattson, M.P., 2002b. Disruption of neurogenesis by amyloid beta-peptide, and perturbed neural progenitor cell homeostasis, in models of Alzheimer's disease. *J. Neurochem.* 83, 1509–1524.
- Heine, V.M., Maslam, S., Joëls, M., Lucassen, P.J., 2004. Prominent decline of newborn cell proliferation, differentiation, and apoptosis in the aging dentate gyrus, in absence of an age-related hypothalamus-pituitary-adrenal axis activation. *Neurobiol. Aging* 25, 361–375.
- Heneka, M.T., Carson, M.J., Khoury, J.E., Landreth, G.E., Brosseron, F., Feinstein, D.L., Jacobs, A.H., Wyss-Coray, T., Vitorica, J., Ransohoff, R.M., Herrup, K., Frautschi, S.A., Finsen, B., Brown, G.C., Verkhratsky, A., Yamanaka, K., Koistinaho, J., Latz, E., Halle, A., Petzold, G.C., Town, T., Morgan, D., Shinohara, M.L., Perry, V.H., Holmes, C., Bazan, N.G., Brooks, D.J., Hunot, S., Joseph, B., Deigendesch, N., Garaschuk, O., Boddeke, E., Dinarello, C.A., Breitner, J.C., Cole, G.M., Golenbock, D.T., Kummer, M.P., 2015a. Neuroinflammation in Alzheimer's disease. *Lancet Neurol.* 14, 388–405.
- Heneka, M.T., Golenbock, D.T., Latz, E., 2015b. Innate immunity in Alzheimer's disease. *Nat. Immunol.* 16, 229–236.
- Heneka, M.T., Sastre, M., Dumitrescu-Ozimek, L., Dewachter, I., Walter, J., Klockgether, T., Van Leuven, F., 2005. Focal glial activation coincides with increased BACE1 activation and precedes amyloid plaque deposition in APP [V717I] transgenic mice. *J. Neuroinflammation* 2, 22.
- Henry, C.J., Huang, Y., Wynne, A.M., Godbout, J.P., 2009. Peripheral lipopolysaccharide (LPS) challenge promotes microglial hyperactivity in aged mice that is associated with exaggerated induction of both pro-inflammatory IL-1 $\beta$  and anti-inflammatory IL-10 cytokines. *Brain Behav. Immun.* 23, 309–317.
- Hoeijmakers, L., Ruigrok, S.R., Amelianchik, A., Ivan, D., Dam, A.-M.V., Lucassen, P.J., Korosi, A., 2017. Early-life stress lastingly alters the neuroinflammatory response to amyloid pathology in an Alzheimer's disease mouse model. *Brain Behav. Immun.* 63, 160–175.
- Holtman, I.R., Raj, D.D., Miller, J.A., Schaafsma, W., Yin, Z., Brouwer, N., Wes, P.D., Möller, T., Orre, M., Kamphuis, W., Hol, E.M., Boddeke, E.W.G.M., Eggen, B.J.L., 2015. Induction of a common microglia gene expression signature by aging and neurodegenerative conditions: a co-expression meta-analysis. *Acta Neuropathol. Commun.* 3, 31.
- Ihunwo, A.O., Schliebs, R., 2010. Cell proliferation and total granule cell number in dentate gyrus of transgenic Tg2576 mouse. *Acta Neuropathol. Exp.* 70, 362–369.
- Jack, C.R., Knopman, D.S., Jagust, W.J., Petersen, R.C., Weiner, M.W., Aisen, P.S., Shaw, L.M., Vemuri, P., Wiste, H.J., Weigand, S.D., Lesnick, T.G., Pankratz, V.S., Donohue, M.C., Trojanowski, J.Q., 2013. Tracking pathophysiological processes in Alzheimer's disease: an updated hypothetical model of dynamic biomarkers. *Lancet Neurol.* 12, 207–216.
- Jack, C.R., Petersen, R.C., Xu, Y.C., O'Brien, P.C., Smith, G.E., Ivnik, R.J., Boeve, B.F., Waring, S.C., Tangalos, E.G., Kokmen, E., 1999. Prediction of AD with MRI-based hippocampal volume in mild cognitive impairment. *Neurology* 52, 1397–1403.
- Jagust, W., 2013. Vulnerable neural systems and the borderland of brain aging and neurodegeneration. *Neuron* 77, 219–234.
- Jeong, Y.H., Park, C.H., Yoo, J., Shin, K.Y., Ahn, S.-M., Kim, H.-S., Lee, S.H., Emson, P.C., Suh, Y.-H., 2006. Chronic stress accelerates learning and memory impairments and increases amyloid deposition in APPV717I-CT100 transgenic mice, an Alzheimer's disease model. *FASEB J.* 20, 729–731.
- Jin, K.L., Peel, A.L., Mao, X.O., Xie, L., Cottrell, B.A., Henshall, D.C., Greenberg, D.A., 2004. Increased hippocampal neurogenesis in Alzheimer's disease. *Proc. Natl. Acad. Sci. U. S. A.* 101, 343–347.
- Jung, C.K.E., Keppler, K., Steinbach, S., Blazquez-Llorca, L., Herms, J., 2015. Fibrillar amyloid plaque formation precedes microglial activation. *PLoS One* 10, e0119768.
- Kandola, A., Hendrikse, J., Lucassen, P.J., Yücel, M., 2016. Aerobic exercise as a tool to improve hippocampal plasticity and function in humans: practical implications for mental health treatment. *Front. Hum. Neurosci.* 10, 373.
- Kempermann, G., Gast, D., Kronenberg, G., Yamaguchi, M., Gage, F.H., 2003. Early determination and long-term persistence of adult-generated new neurons in the hippocampus of mice. *Development* 130, 391–399.
- Kempermann, G., Jessberger, S., Steiner, B., Kronenberg, G., 2004. Milestones of neuronal development in the adult hippocampus. *Trends Neurosci.* 27, 447–452.
- Knoth, R., Singec, I., Ditter, M., Pantazis, G., Capetian, P., Meyer, R.P., Horvat, V., Volk, B., Kempermann, G., 2010. Murine features of neurogenesis in the human hippocampus across the lifespan from 0 to 100 years. *PLoS One* 5, e8809.
- Krezymin, A., Richetin, K., Halley, H., Roybon, L., Lassalle, J.-M., Francès, B., Verret, L., Rampon, C., 2013. Modifications of hippocampal circuits and early disruption of adult neurogenesis in the tg2576 mouse model of Alzheimer's disease. *PLoS One* 8, e76497.
- Kuhn, H.G., Cooper-Kuhn, C.M., Boekhoorn, K., Lucassen, P.J., 2007. Changes in neurogenesis in dementia and Alzheimer mouse models: are they functionally relevant? *Eur. Arch. Psych. Clin. Neurosci.* 257, 281–289.
- Kuhn, H.G., Dickinson-Anson, H., Gage, F.H., 1996. Neurogenesis in the dentate gyrus of the adult rat: age-related decrease of neuronal progenitor proliferation. *J. Neurosci.* 16, 2027–2033.
- Kuhn, H.G., Palmer, T.D., Fuchs, E., 2001. Adult neurogenesis: a compensatory mechanism for neuronal damage. *Eur. Arch. Psych. Clin. Neurosci.* 251, 152–158.
- LaFerla, F.M., Green, K.N., Oddo, S., 2007. Intracellular amyloid- $\beta$  in Alzheimer's disease. *Nat. Rev. Neurosci.* 8, 499–509.
- Lazarov, O., Lee, M., Peterson, D.A., Sisodia, S.S., 2002. Evidence that synaptically released beta-amyloid accumulates as extracellular deposits in the hippocampus of transgenic mice. *J. Neurosci.* 22, 9785–9793.
- Li, B., Yamamori, H., Tatabayashi, Y., Shafiq-Zagardo, B., Tanimukai, H., Chen, S., Iqbal, K., Grundke-Iqbal, I., 2008. Failure of neuronal maturation in Alzheimer disease dentate gyrus. *J. Neuropathol. Exp. Neurol.* 67, 78–84.
- Lucassen, P.J., Jacobs, E.H., Hoeijmakers, L., Lesuis, S.L., Krugers, H.J., Korosi, A., Kuhn, H.G., Boekhoorn, K., Human Press, New York, 2015. Stem cells and neurogenesis in relation to Alzheimer's disease (models). In: Eisch, A.J., Kuhn, H.G. (Eds.), *Neural Stem Cells in Development, Adulthood and Disease*. Human Press, New York, pp. 53–78.
- Manganas, L.N., Zhang, X., Li, Y., Hazel, R.D., Smith, S.D., Wagshul, M.E., Henn, F., Benveniste, H., Djuric, P.M., Enikolopov, G., Maletic-Savatic, M., 2007. Magnetic resonance spectroscopy identifies neural progenitor cells in the live human brain. *Science* 318, 980–985.
- Marlatt, M., Lucassen, P., 2010. Neurogenesis and Alzheimer's disease: biology and pathophysiology in mice and men. *Curr. Alzheimer Res.* 7, 113–125.
- Marlatt, M.W., Aronica, E., van Haastert, E.S., Joëls, M., Bauer, J., Hoozemans, J.J.M., Lucassen, P.J., 2014. Proliferation in the Alzheimer Hippocampus is due to microglia, not Astroglia, and occurs at sites of amyloid deposition. *Neural Plast.* 2014, 1–12.
- Marlatt, M.W., Potter, M.C., Bayer, T.A., van Praag, H., Lucassen, P.J., 2013. Prolonged running, not fluoxetine treatment, increases neurogenesis, but does not alter neuropathology, in the 3xTg mouse model of Alzheimer's disease. *Curr. Top. Behav. Neurosci.* 15, 313–340.
- Maruszak, A., Pilariski, A., Murphy, T., Branch, N., Thuret, S., 2014. Hippocampal neurogenesis in Alzheimer's disease: is there a role for dietary modulation? *J. Alzheimers Dis.* 38, 11–38.
- Mattiesen, W.-R.C., Tauber, S.C., Gerber, J., Bunkowski, S., Brück, W., Nau, R., 2009. Increased neurogenesis after hypoxic-ischemic encephalopathy in humans is age related. *Acta Neuropathol.* 117, 525–534.
- Mirochnic, S., Wolf, S., Staufienbiel, M., Kempermann, G., 2009. Age effects on the regulation of adult hippocampal neurogenesis by physical activity and environmental enrichment in the APP23 mouse model of Alzheimer disease. *Hippocampus* 19, 1008–1018.
- Moechars, D., Dewachter, L., Lorent, K., Reversé, D., Baekelandt, V., Naidu, A., Tesseur, I., Spittaels, K., Haute, C.V., Checler, F., Godaux, E., Cordell, B., Van Leuven, F., 1999. Early phenotypic changes in transgenic mice that overexpress different mutants of amyloid precursor protein in brain. *J. Biol. Chem.* 274, 6483–6492.
- Mu, Y., Gage, F.H., 2011. Adult hippocampal neurogenesis and its role in Alzheimer's disease. *Mol. Neurodegener.* 6, 85.
- Nagele, R.G., Wegiel, J., Venkataraman, V., Imaki, H., Wang, K.-C., Wegiel, J., 2004. Contribution of glial cells to the development of amyloid plaques in Alzheimer's disease. *Neurobiol. Aging* 25, 663–674.
- Naninck, E.F.G., Hoeijmakers, L., Kakava-Georgiadou, N., Meesters, A., Lazić, S.E., Lucassen, P.J., Korosi, A., 2015. Chronic early life stress alters developmental and adult neurogenesis and impairs cognitive function in mice. *Hippocampus* 25, 309–328.
- Oddo, S., Caccamo, A., Smith, I.F., Green, K.N., LaFerla, F.M., 2006. A dynamic relationship between intracellular and extracellular pools of A $\beta$ . *Am. J. Pathol.* 168, 184–194.
- Olmos-Alonso, A., Schetters, S.T.T., Sri, S., Askew, K., Mancuso, R., Vargas-Caballero, M., Holscher, C., Perry, V.H., Gomez-Nicola, D., 2016. Pharmacological targeting of CSF1R inhibits microglial proliferation and prevents the progression of Alzheimer's-like pathology. *Brain* 139, 891–907.
- Oomen, C.A., Bekinschtein, P., Kent, B.A., Saksida, L.M., Bussey, T.J., 2014. Adult hippocampal neurogenesis and its role in cognition. *Wiley Interdiscip. Rev. Cogn. Sci.* 5, 573–587.
- Oomen, C.A., Soeters, H., Audureau, N., Vermunt, L., van Hasselt, F.N., Manders, E.M.M., Joëls, M., Lucassen, P.J., Krugers, H., 2010. Severe early life stress hampers spatial learning and neurogenesis, but improves hippocampal synaptic plasticity and emotional learning under high-stress conditions in adulthood. *J. Neurosci.* 30, 6635–6645.
- Parent, J.M., 2002. The role of seizure-induced neurogenesis in epileptogenesis and brain repair. *Epilepsy Res.* 50, 179–189.
- Pawluski, J.L., Brummelte, S., Barha, C.K., Crozier, T.M., Galea, L.A.M., 2009. Effects of steroid hormones on neurogenesis in the hippocampus of the adult female rodent during the estrous cycle, pregnancy, lactation and aging. *Front. Neuroendocrinol.* 30, 343–357.
- Pereira, J.B., Valls Pedret, C., Ros, E., Palacios, E., Falcón, C., Bargalló, N., Bartrés, F., D., Wahlund, L.-O., Westman, E., Junque, C., 2014. Regional vulnerability of hippocampal subfields to aging measured by structural and diffusion MRI. *Hippocampus* 24, 403–414.
- Perry, E.K., Johnson, M., Ekonomou, A., Perry, R.H., Ballard, C., Attems, J., 2012. Neurogenic abnormalities in Alzheimer's disease differ between stages of neurogenesis and are partly related to cholinergic pathology. *Neurobiol. Dis.* 47, 155–162.
- Prince, M., Bryce, R., Albanese, E., Wimo, A., Ribeiro, W., Ferri, C.P., 2013. The global prevalence of dementia: a systematic review and metaanalysis. *Alzheimers Dement.* 9, 63–75.e2.
- Raz, N., Rodrigue, K.M., Head, D., Kennedy, K.M., Acker, J.D., 2004. Differential aging of the medial temporal lobe: a study of a five-year change. *Neurology* 62, 433–438.

- Richetin, K., Leclerc, C., Toni, N., Gallopin, T., Pech, S., Roybon, L., Rampon, C., 2015. Genetic manipulation of adult-born hippocampal neurons rescues memory in a mouse model of Alzheimer's disease. *Brain* 138, 440–455.
- Richetin, K., Petsophonsakul, P., Roybon, L., Guiard, B.P., Rampon, C., 2017. Differential alteration of hippocampal function and plasticity in females and males of the APPxPS1 mouse model of Alzheimer's disease. *Neurobiol. Aging* 57, 220–231.
- Rodríguez, J.J., Jones, V.C., Tabuchi, M., Allan, S.M., Knight, E.M., LaFerla, F.M., Oddo, S., Verkhratsky, A., 2008. Impaired adult neurogenesis in the dentate gyrus of a triple transgenic mouse model of Alzheimer's disease. *PLoS One* 3, e2935.
- Rolandi, E., Frisoni, G.B., Cavado, E., 2016. Efficacy of lifestyle interventions on clinical and neuroimaging outcomes in elderly. *Ageing Res. Rev.* 25, 1–12.
- Ryan, S.M., Nolan, Y.M., 2016. Neuroinflammation negatively affects adult hippocampal neurogenesis and cognition: can exercise compensate? *Neurosci. Biobehav. Rev.* 61, 121–131.
- Scarmeas, N., Luchsinger, J.A., Schupf, N., Brickman, A.M., Cosentino, S., Tang, M.X., Stern, Y., 2009. Physical activity, diet, and risk of Alzheimer disease. *JAMA* 302, 627–637.
- Scheltens, P., Blennow, K., Breteler, M.M.B., de Strooper, B., Frisoni, G.B., Salloway, S., Van der Flier, W.M., 2016. Alzheimer's disease. *Lancet* 388, 505–517.
- Schmitz, C., Rutten, B.P.F., Pielen, A., Schafer, S., Wirths, O., Tremp, G., Czech, C., Blanchard, V., Multhaup, G., Rezaie, P., Korr, H., Steinbusch, H.W.M., Pradier, L., Bayer, T.A., 2004. Hippocampal neuron loss exceeds amyloid plaque load in a transgenic mouse model of Alzheimer's disease. *Am. J. Pathol.* 164, 1495–1502.
- Serrano-Pozo, A., Gómez-Isla, T., Growdon, J.H., Frosch, M.P., Hyman, B.T., 2013. A phenotypic change but not proliferation underlies glial responses in Alzheimer disease. *Am. J. Pathol.* 182, 2332–2344.
- Sheng, J.G., Mrak, R.E., Griffin, W.S.T., 1998. Enlarged and phagocytic, but not primed, interleukin-1 $\alpha$ -immunoreactive microglia increase with age in normal human brain. *Acta Neuropathol.* 95, 229–234.
- Shetty, A.K., Hattiangady, B., Rao, M.S., Shuai, B., 2012. Neurogenesis response of middle-aged hippocampus to acute seizure activity. *PLoS One* 7, e43286.
- Sierra, A., Beccari, S., Diaz-Aparicio, I., Encinas, J.M., Comeau, S., Tremblay, M.-E., 2014. Surveillance, phagocytosis, and inflammation: how never-resting microglia influence adult hippocampal neurogenesis. *Neural Plast.* 2014.
- Sierra, A., Encinas, J.M., Deudero, J.J.P., Chancey, J.H., Enikolopov, G., Overstreet-Wadiche, L.S., Tsirka, S.E., Maletic-Savatic, M., 2010. Microglia shape adult hippocampal neurogenesis through apoptosis-coupled phagocytosis. *Cell Stem Cell* 7, 483–495.
- Sierra, A., Gottfried-Blackmore, A.C., McEwen, B.S., Bulloch, K., 2007. Microglia derived from aging mice exhibit an altered inflammatory profile. *Glia* 55, 412–424.
- Singh, B., Parsaik, A.K., Mielke, M.M., Erwin, P.J., Knopman, D.S., Petersen, R.C., Roberts, R.O., 2014. Association of Mediterranean diet with mild cognitive impairment and Alzheimer's disease: a systematic review and meta-analysis. *J. Alzheimers Dis.* 39, 271–282.
- Small, S.A., Chawla, M.K., Buonocore, M., Rapp, P.R., Barnes, C.A., 2004. Imaging correlates of brain function in monkeys and rats isolates a hippocampal sub-region differentially vulnerable to aging. *Proc. Natl. Acad. Sci. U. S. A.* 101, 7181–7186.
- Small, S.A., Tsai, W.Y., DeLaPaz, R., Mayeux, R., Stern, Y., 2002. Imaging hippocampal function across the human life span: is memory decline normal or not? *Ann. Neurol.* 51, 290–295.
- Sofi, F., Vallecchi, D., Bacci, D., Abbate, R., Gensini, G.F., Casini, A., 2011. Physical activity and risk of cognitive decline: a meta-analysis of prospective studies. *J. Intern. Med.* 269, 107–117.
- Solano Fonseca, R., Mahesula, S., Apple, D., Raghunathan, R., Dugan, A., Cardona, A., O'Connor, J., Kokovay, E., 2016. Neurogenic niche microglia undergo positional remodeling and progressive activation contributing to age-associated reductions in neurogenesis. *Stem Cells Dev.* 25, 542–555.
- Spalding, K.L., Bergmann, O., Alkass, K., Bernard, S., Salehpour, M., Huttner, H.B., Boström, E., Westerlund, I., Vial, C., Buchholz, B.A., Possnert, G., Mash, D.C., Druid, H., Frisén, J., 2013. Dynamics of hippocampal neurogenesis in adult humans. *Cell* 153, 1219–1227.
- Stern, Y., 2002. What is cognitive reserve? Theory and research application of the reserve concept. *J. Int. Neuropsychol. Soc.* 8, 448–460.
- Stern, Y., 2012. Cognitive reserve in ageing and Alzheimer's disease. *Lancet Neurol.* 11, 1006–1012.
- Stoub, T.R., Rogalski, E.J., Leurgans, S., Bennett, D.A., deToledo-Morrell, L., 2010. Rate of entorhinal and hippocampal atrophy in incipient and mild AD: relation to memory function. *Neurobiol. Aging* 31, 1089–1098.
- Tanghe, A., Termont, A., Merchiers, P., Schilling, S., Demuth, H.-U., Scrocchi, L., Van Leuven, F., Griffioen, G., Van Dooren, T., 2010. Pathological hallmarks, clinical parallels, and value for drug testing in Alzheimer's disease of the APP[V717I] london transgenic mouse model. *J. Alzheimers Dis.* 2010, 417314.
- Taniuchi, N., Niidome, T., Goto, Y., Akaike, A., Kihara, T., Sugimoto, H., 2007. Decreased proliferation of hippocampal progenitor cells in APPswe/PS1dE9 transgenic mice. *Neuroreport* 18, 1801–1805.
- Taupin, P., 2006. Stroke-induced neurogenesis: physiopathology and mechanisms. *Curr. Neurovasc. Res.* 3, 67–72.
- Thinakaran, G., Koo, E.H., 2008. Amyloid precursor protein trafficking, processing, and function. *J. Biol. Chem.* 283, 29615–29619.
- Unger, M.S., Marschallinger, J., Kaindl, J., Höfling, C., Rossner, S., Heneka, M.T., Van der Linden, A., Aigner, L., 2016. Early changes in hippocampal neurogenesis in transgenic mouse models for Alzheimer's disease. *Mol. Neurobiol.* 53, 5796–5806.
- Van Dorpe, J., Smeijers, L., Dewachter, I., Nuyens, D., Spittaels, K., Van den Haute, C., Mercken, M., Moechars, D., Laenen, I., Kuiperi, C., Bruynseels, K., Tesseur, I., Loos, R., Vandersticche, H., Checler, F., Sciot, R., Van Leuven, F., 2000. Prominent cerebral amyloid angiopathy in transgenic mice overexpressing the london mutant of human APP in neurons. *Am. J. Pathol.* 157, 1283–1298.
- Van Praag, H., Shubert, T., Zhao, C., Gage, F.H., 2005. Exercise enhances learning and hippocampal neurogenesis in aged mice. *J. Neurosci.* 25, 8680–8685.
- Varnum, M.M., Kiyota, T., Ingraham, K.L., Ikezu, S., Ikezu, T., 2015. The anti-inflammatory glycoprotein, CD200, restores neurogenesis and enhances amyloid phagocytosis in a mouse model of Alzheimer's disease. *Neurobiol. Aging* 36, 2995–3007.
- Veeraraghavulu, K., Choi, S.H., Zhang, X., Sisodia, S.S., 2013. Endogenous expression of FAD-linked PS1 impairs proliferation, neuronal differentiation and survival of adult hippocampal progenitors. *Mol. Neurodegener.* 8, 41.
- Verret, L., Jankowsky, J.L., Xu, G.M., Borchelt, D.R., Rampon, C., 2007. Alzheimer's-Type Amyloidosis in transgenic mice impairs survival of newborn neurons derived from adult hippocampal neurogenesis. *J. Neurosci.* 27, 6771–6780.
- Vivar, C., Potter, M.C., van Praag, H., 2013. All about running: synaptic plasticity, growth factors and adult hippocampal neurogenesis. *Curr. Top. Behav. Neurosci.* 15, 189–210.
- Von Bernhardi, R., Eugenin-von Bernhardi, L., Eugenin, J., 2015. Microglial cell dysregulation in brain aging and neurodegeneration. *Front. Aging Neurosci.* 7, 1–21.
- Von Bernhardi, R., Tichauer, J., Eugenin-von Bernhardi, L., 2011. Proliferating culture of aged microglia for the study of neurodegenerative diseases. *J. Neurosci. Methods* 202, 65–69.
- Weissleder, C., Fung, S., Wong, M.W., Barry, G., Double, K.L., Halliday, G.M., Webster, M.J., Weickert, C.S., 2016. Decline in proliferation and immature neuron markers in the human subependymal zone during aging: relationship to EGF- and FGF-related transcripts. *Front. Aging Neurosci.* 8, 274.
- West, M.J., Coleman, P.D., Flood, D.G., Troncoso, J.C., 1994. Differences in the pattern of hippocampal neuronal loss in normal ageing and Alzheimer's disease. *Lancet* 344, 769–772.
- West, M.J., Kawas, C.H., Stewart, W.F., Rudow, G.L., Troncoso, J.C., 2004. Hippocampal neurons in pre-clinical Alzheimer's disease. *Neurobiol. Aging* 25, 1205–1212.
- Wirths, O., Multhaup, G., Czech, C., Feldmann, N., Blanchard, V., Tremp, G., Beyreuther, K., Pradier, L., Bayer, T.A., 2002. Intraneuronal APP/A $\beta$  trafficking and plaque formation in  $\beta$ -amyloid precursor protein and Presenilin-1 transgenic mice. *Brain Pathol.* 12, 275–286.
- Youmans, K.L., Tai, L.M., Kanekiyo, T., Stine Jr., W.B., Michon, S.-C., Nwabuisi-Heath, E., Manelli, A.M., Fu, Y., Riordan, S., Eimer, W.A., Binder, L., Bu, G., Yu, C., Hartley, D.M., LaDu, M.J., 2012. Intraneuronal A $\beta$  detection in 5xFAD mice by a new A $\beta$ -specific antibody. *Mol. Neurodegener.* 7, 8.
- Yu, Y., He, J., Zhang, Y., Luo, H., Zhu, S., Yang, Y., Zhao, T., Wu, J., Huang, Y., Kong, J., Tan, Q., Li, X.-M., 2009. Increased hippocampal neurogenesis in the progressive stage of Alzheimer's disease phenotype in an APP/PS1 double transgenic mouse model. *Hippocampus* 19, 1247–1253.
- Zhang, C., McNeil, E., Dressler, L., Siman, R., 2007. Long-lasting impairment in hippocampal neurogenesis associated with amyloid deposition in a knock-in mouse model of familial Alzheimer's disease. *Exp. Neurol.* 204, 77–87.
- Zhao, W., Zhang, J., Davis, E.G., Rebeck, G.W., 2014. Aging reduces glial uptake and promotes extracellular accumulation of A $\beta$  from a lentiviral vector. *Front. Aging Neurosci.* 6, 210.
- Zhu, M., Allard, J.S., Zhang, Y., Perez, E., Spangler, E.L., Becker, K.G., Rapp, P.R., 2014. Age-related brain expression and regulation of the chemokine CCL4/MIP-1 $\beta$  in APP/PS1 double-transgenic mice. *J. Neurobiol. Exp. Neurol.* 73, 362–374.