



UvA-DARE (Digital Academic Repository)

Familial syndromic esophageal atresia maps to p23-p24

Celli, J.; Beusekom, E.; Hennekam, R.C.M.; Gallardo, M.E.; Smeets, D.F.C.M.; de Córdoba, S.R.; Innis, J.W.; Frydman, M.; König, R.; Kingston, H.; Tolmie, J.; Govaerts, L.C.P.; van Bokhoven, H.; Brunner, H.G.

DOI

[10.1086/302779](https://doi.org/10.1086/302779)

Publication date

2000

Published in

American Journal of Human Genetics

[Link to publication](#)

Citation for published version (APA):

Celli, J., Beusekom, E., Hennekam, R. C. M., Gallardo, M. E., Smeets, D. F. C. M., de Córdoba, S. R., Innis, J. W., Frydman, M., König, R., Kingston, H., Tolmie, J., Govaerts, L. C. P., van Bokhoven, H., & Brunner, H. G. (2000). Familial syndromic esophageal atresia maps to p23-p24. *American Journal of Human Genetics*, *66*, 436-444. <https://doi.org/10.1086/302779>

General rights

It is not permitted to download or to forward/distribute the text or part of it without the consent of the author(s) and/or copyright holder(s), other than for strictly personal, individual use, unless the work is under an open content license (like Creative Commons).

Disclaimer/Complaints regulations

If you believe that digital publication of certain material infringes any of your rights or (privacy) interests, please let the Library know, stating your reasons. In case of a legitimate complaint, the Library will make the material inaccessible and/or remove it from the website. Please Ask the Library: <https://uba.uva.nl/en/contact>, or a letter to: Library of the University of Amsterdam, Secretariat, Singel 425, 1012 WP Amsterdam, The Netherlands. You will be contacted as soon as possible.

UvA-DARE is a service provided by the library of the University of Amsterdam (<https://dare.uva.nl>)

Familial Syndromic Esophageal Atresia Maps to 2p23-p24

Jacopo Celli,¹ Ellen van Beusekom,¹ Raoul C. M. Hennekam,² M. Esther Gallardo,⁸ Dominique F. C. M. Smeets,¹ Santiago Rodríguez de Córdoba,^{8,9} Jeffrey W. Innis,⁵ Moshe Frydman,^{6,7} Rainer König,¹⁰ Helen Kingston,¹¹ John Tolmie,¹² Lutgarde C. P. Govaerts,^{3,4} Hans van Bokhoven,¹ and Han G. Brunner¹

¹Department of Human Genetics, University Hospital Nijmegen, Nijmegen, The Netherlands; ²Clinical Genetics, University of Utrecht, Utrecht; ³Department of Clinical Genetics, University of Maastricht, Veldhoven, The Netherlands; ⁴Department of Clinical Genetics, University Hospital Rotterdam, Rotterdam; ⁵Departments of Pediatrics and Human Genetics, University of Michigan, Ann Arbor; ⁶Genetics Institute and Department of Radiology, Sheba Medical Center, Tel-Hashomer, Israel; ⁷Sackler School of Medicine, Tel Aviv University, Tel Aviv; ⁸Complement Genetics Laboratory Department of Immunology, Center of Biological Investigations, and ⁹Unit of Molecular Pathology, Jimenez Diaz Foundation, Madrid; ¹⁰Institute of Human Genetics, Johan Wolfgang Goethe University, Frankfurt; ¹¹Regional Genetic Service, St Mary's Hospital, Manchester, United Kingdom; and ¹²Duncan Guthrie Institute of Medical Genetics, Glasgow

Summary

Esophageal atresia (EA) is a common life-threatening congenital anomaly that occurs in 1/3,000 newborns. Little is known of the genetic factors that underlie EA. Oculodigitoesophageoduodenal (ODED) syndrome (also known as “Feingold syndrome”) is a rare autosomal dominant disorder with digital abnormalities, microcephaly, short palpebral fissures, mild learning disability, and esophageal/duodenal atresia. We studied four pedigrees, including a three-generation Dutch family with 11 affected members. Linkage analysis was initially aimed at chromosomal regions harboring candidate genes for this disorder. Twelve different genomic regions covering 15 candidate genes (~15% of the genome) were excluded from involvement in the ODED syndrome. A subsequent nondirective mapping approach revealed evidence for linkage between the syndrome and marker D2S390 (maximum LOD score 4.51 at recombination fraction 0). A submicroscopic deletion in a fourth family with ODED provided independent confirmation of this genetic localization and narrowed the critical region to 7.3 cM in the 2p23-p24 region. These results show that haploinsufficiency for a gene or genes in 2p23-p24 is associated with syndromic EA.

Introduction

Esophageal atresia (EA) is a common life-threatening congenital condition. EA occurs in ~1/3,000 newborns (David and O'Callaghan 1975; Szendrey et al. 1985). EA is frequently associated with other congenital anomalies. Of these, the most common are other gastrointestinal atresias or stenoses, anomalies of the urinary tract, and heart defects (Kimble et al. 1997). This combination of features is often referred to as the “VATER association” (MIM 192350). In some cases, EA is associated with chromosomal abnormalities, such as deletions of 22q11 (Digilio et al. 1999), trisomy 18, and trisomy 21 (Beasley et al. 1997). A recent compilation of data on chromosomal deletions failed to identify any region that is specifically associated with EA (Brewer et al. 1998). Nonsyndromic EA is considered to be a multifactorial trait whose pathogenesis and causation are ill defined. The recurrence of EA in some families (van Staey et al. 1984) suggests a contribution of genetic factors. In addition, several families with dominantly inherited forms of syndromic EA have been reported. To identify a gene involved in EA, we are studying families with the autosomal dominant oculodigitoesophageoduodenal (ODED) syndrome (MIM 164280). This syndrome has been described under the following names: microcephaly-oculo-digito-esophageal-duodenal (MODED) syndrome, microcephaly mesobrachyphalangy and tracheoesophageal fistula (MMT) syndrome, and Feingold syndrome. The principal features of ODED syndrome are clinodactyly of the 2d and 5th fingers; toe syndactyly, typically of the 4th and 5th toes; microcephaly; short palpebral fissures; and esophageal/duodenal atresia (Feingold 1975; König et al. 1990; Brunner and Winter 1991; Courtens et al. 1997; Feingold et al. 1997; Frydman et al. 1997; Innis et al. 1997). EA or duodenal atresia is present in ~33% of patients with ODED, whereas minor digital abnormalities are present in all

Received September 20, 1999; accepted for publication November 16, 1999; electronically published February 9, 2000.

Address for correspondence and reprints: Dr. Jacopo Celli, Human Genetics, University Hospital Nijmegen, Geert Grooteplein 10, 6500 HB Nijmegen, The Netherlands. E-mail: j.celli@antrg.azn.nl

© 2000 by The American Society of Human Genetics. All rights reserved. 0002-9297/2000/6602-0011\$02.00

(Brunner and Winter 1991). We conducted a linkage study of ODED syndrome in a large Dutch family with 11 affected members, as well as in three other small families. We first excluded several chromosomal regions containing candidate genes. We then started a genome-wide scan on the remaining parts of the genome that were not covered by our candidate genes. Our results clearly indicate the presence of the ODED-syndrome gene in the p23-p24 region of human chromosome 2.

Subjects

The four families with syndromic EA that were analyzed in this study all showed autosomal dominant inheritance of the ODED-syndrome phenotype, including toe syndactyly, microcephaly, and esophageal and/or duodenal atresia (for pedigrees, see figs. 1 and 2). Family A was described by Brunner and Winter (1991); family B was described by Innis et al. (1997); and family C was described by Frydman et al. (1997). Family D is an unreported family whose records were contributed by R. Hennekam. Four additional isolated patients and small families with ODED syndrome (König et al. 1990; Courtens et al. 1997; H.K. and J.T., unpublished data) were examined for mutations of the human *SIX2* gene. In these small families, as well as in the isolated patients, the core features of ODED syndrome—namely, microcephaly, limb abnormalities, and EA or duodenal atresia—were present.

The family with nonsyndromic EA (fig. 3) lacked all other ODED-syndrome characteristics (specifically, microcephaly, short palpebral fissures, and limb abnormalities) and was evaluated by L.C.P.G.

Material and Methods

Materials from Patients

After informed consent was obtained, venous blood samples were collected from affected and unaffected family members. The DNA used in this study was isolated from peripheral blood lymphocytes of patients and relatives, as described elsewhere (Miller et al. 1988).

Microsatellite PCR and Data Analysis

Polymorphic markers used were derived mainly from the Génethon genetic map (Dib et al. 1996). PCR reactions were performed in a 12- μ l volume containing 50 ng of DNA; 30 ng of each primer; 200 μ M dATP, dGTP, and dTTP; 2.4 μ M dCTP; 0.6 μ Ci α [³²P]-dCTP; 10 mM Tris-HCl pH 9.0; 50 mM KCl; 1.5 mM MgCl₂; 0.1% Triton-X100; and 0.3 U of *Taq* DNA polymerase (GIBCO-BRL Life Technologies). After initial denaturation at 94°C for 5 min, 30 cycles of amplification at 94°C for 1 min, at 55°C for 2 min, and at 72°C for 1

min, and a final extension at 72°C for 6 min were performed in a 96-well thermal cycler (M.J. Research). Amplified products were electrophoresed in 6.6% denaturing polyacrylamide gels and were visualized by autoradiography on Kodak X-OMAT films.

Linkage calculations were performed, by use of the LINKAGE package (version 5.03), on the basis of autosomal dominant inheritance, with full penetrance for the families with ODED syndrome and with incomplete penetrance (50%) for the family with nonsyndromic EA. The frequency of the mutant allele was set at .00001. Penetrance was set at 100% for the families with ODED, in accordance with other estimates (Brunner and Winter 1991). All patients with ODED have, at least, microcephaly and limb abnormalities. As for the setting of penetrance to 50% in the family with nonsyndromic EA, this was deduced from the pedigree, and it is in agreement with the penetrance of intestinal atresia in ODED syndrome.

DNA Sequence Analysis

Exon 1 of the *SIX2* gene was amplified from genomic DNA, with the use of overlapping primers designed to amplify the six domain from the N terminus of the gene (*Six2D* + *Six2B*) and the homeobox domain (*Six2A* + *Six2B*). The primer sequences were as follows: *Six2A*, GCG TGC TCA AGG CCA AGG CCG TGG; *Six2B*, CCT GTC GCG CTG CCG CCG GTT CT; and *Six2D*, GCC ACC ATG TCC ATG TTG CC. PCR reactions were performed in a 50- μ l volume containing 100 ng of DNA, 5 μ M of each primer, 0.2 mM of each dNTP, 1.5 mM of MgCl₂, 1 \times PCR buffer (200 mM Tris-HCl pH 8.4, and 500 mM KCl) (GIBCO-BRL Life Technologies), and 1 U of *Taq* DNA polymerase (GIBCO-BRL Life Technologies). After initial denaturation at 94°C for 2 min, 35 cycles of amplification at 94°C for 30 s, at 70°C for 1 min, and at 72°C for 1 min, and a final extension at 72°C of 6 min were performed in a PE 480 DNA thermal cycler (PE Biosystems). Products were sequenced with use of the Big Dye Terminator Cycle Sequencing Ready Reaction Kit mix and were analyzed with a semi-automated sequencer, Applied Biosystems model 377 (ABI/PE Biosystems).

Fluorescence In Situ Hybridization (FISH)

Four DNA probes were applied in our experiments; all were derived from the WC2.2 YAC contig of the Whitehead Institute for Biomedical Research/MIT Center for Genome Research. To identify chromosome 2, a chromosome paint for 2q was used. FISH procedures were applied as described elsewhere (Suijkerbuijk et al. 1992). In brief, the probes were labeled with biotin-14-dATP (GIBCO-BRL Life Technologies) while paint 2q was labeled with digoxigenin-11-dUTP (Boehringer), by

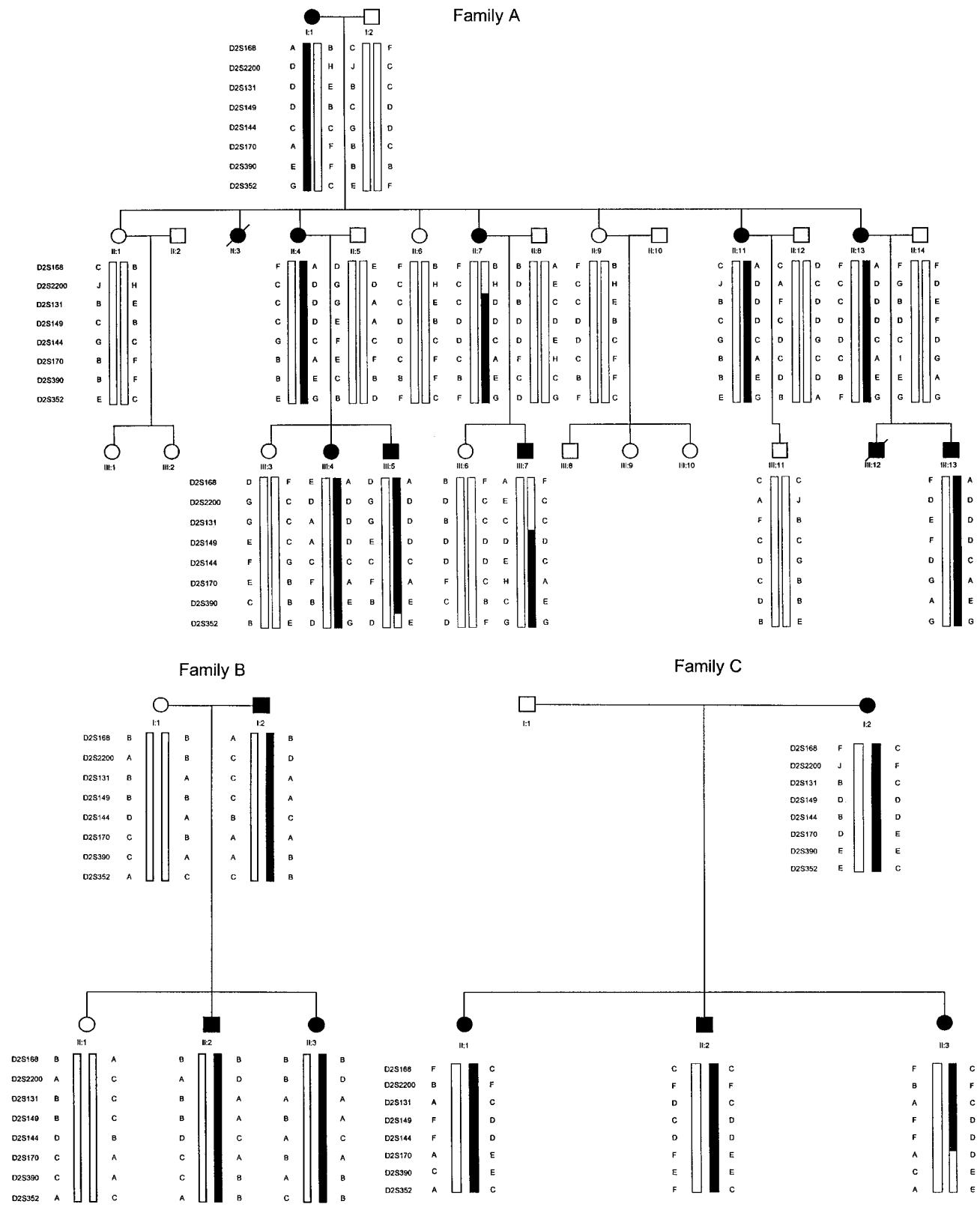


Figure 1 Pedigrees used in the DNA-marker studies. Segregation of chromosome 2 markers is seen in the three-generation Dutch family with ODED syndrome (family A). The blackened bar indicates the haplotype that segregates with the disease. Affected patients III:5 and III:7 show recombination at markers D2S352 and D2S131, respectively. Pedigrees of the two smaller families with ODED syndrome (families B and C) confirm linkage to the 2p23-p24 region. A recombination at D2S390 in individual II:3 (family C) defines the proximal border of the linkage interval.

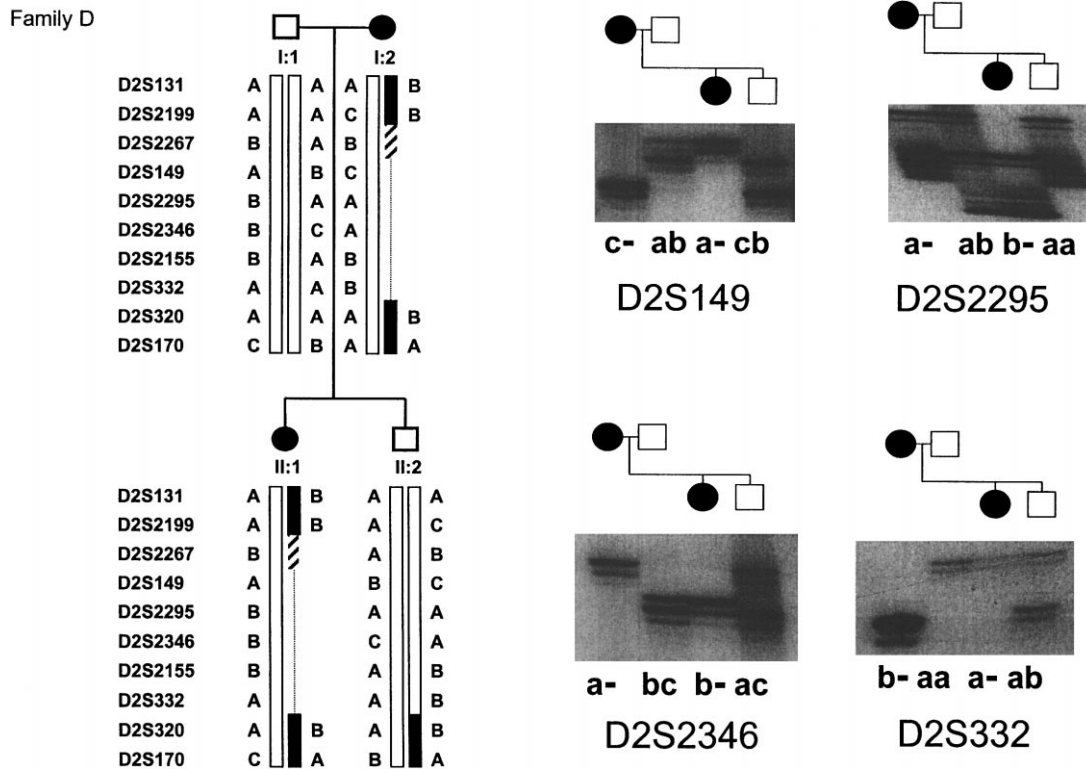


Figure 2 CA-repeat analysis of the microdeletion in 2p23-p24 in family D with ODED syndrome. In this family, the genotypes in the affected mother and daughter are inconsistent with Mendelian inheritance for the markers between D2S2199 and D2S320. In the affected daughter, these markers show only the father's allele and not the allele that is present in the mother. The mother is also hemizygous for these markers. Note that marker D2S2267 is either homozygous or hemizygous in individual II:1.

use of standard nick-translation. YACs were precipitated with human Cot.1 DNA (Life Technologies), were dissolved in hybridization solution (2 × SSC, 10% dextran sulfate, 1% Tween-20, and 50% formamide, pH 7.0), and were heat denatured. Slides were then incubated with the probes for 35 h, followed by immunochemical detection by means of avidin FITC and successive steps with rabbit anti-FITC and mouse-antirabbit FITC-conjugated antibodies. Slides were evaluated in a Zeiss epifluorescence microscope, and hybridization signals and the chromosome counterstained with 4,6-diamidino-2-phenylindole were analyzed with the Biological Detection Systems–image software package (ONCOR-Image).

Cloning and Mapping of Human SIX2

An 884-bp-long human *SIX2* cDNA fragment containing the ATG and TAG codons was obtained by reverse-transcriptase (RT)-PCR, with the use of primers derived from the mouse *Six2* gene sequence and of total RNA prepared, by means of the guanidinium thiocyanate method (Chomczynski and Sacchi 1987), from 31-wk-old human embryonic eyes. RT was performed with the use of oligo-(dT) as a primer and with Moloney

murine leukemia virus RT. Confirmation that the sequence obtained was indeed human *SIX2* was obtained by the comparison of its predicted amino acid sequence with the sequences of the human *SIX1* and the mouse *Six1* and *Six2* genes. Mapping of the human *SIX2* gene was performed with the Stanford Human Genome Center G3 Radiation Hybrid Panel (Research Genetics), by means of primers derived from the intronic sequences of the *SIX2* gene.

Results

To uncover the genetic basis of ODED, we started our mapping efforts by focusing on chromosomal regions containing candidate genes. Candidate genes were selected on the basis of gene-expression patterns, the effect of knockout mutations in mice, and the physiological role of the corresponding proteins. We selected a total of 15 candidate genes on the basis of their prominent expression in developing esophagus and limb (e.g., *PAX9*; see Peters et al. 1997), on the basis of occurrence of EA in a knockout animal (e.g., *Hoxc4*; see Boulet et al. 1996), or because mutations in these genes caused

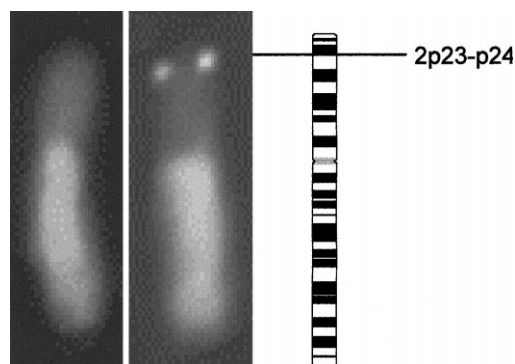


Figure 3 FISH characterization of the microdeletion in 2p23-p24 in family D with ODED syndrome. FISH with YAC probe 953G11 from 2p23-p24 shows only a single signal in a patient with ODED syndrome (patient II:1 in family D).

other forms of intestinal atresias (e.g., *ITG α 6*; see Pulkkinen et al. 1997). Genes encoding proteins involved in retinoic-acid metabolism—such as *CRABP*, *RAR*, and *RXR*—were considered candidates because of their role in apoptotic processes in early development (Båvik et al. 1997; Brickell et al. 1997; Dickman et al. 1997). We also tested genomic regions in which deletions are associated with limb abnormalities that match those of ODED syndrome (13q14-qter and 2q24-q31) (Brunner and Winter 1991; Boles et al. 1995). In total, 12 different regions of the genome were selected. These loci were tested with markers at intervals of 5–10 cM in family A shown in figure 1. No linkage was detected, which allowed us to exclude ~15% of the genome. We then started a genomewide linkage analysis in family A, to cover those areas not excluded by our candidate gene-directed screening. Linkage was almost immediately detected with marker D2S170 (maximum LOD score [Z_{\max}] 3.91 at recombination fraction [θ] 0) from the 2p23-p24 region. Positive LOD scores were also found with markers D2S390, D2S149, D2S352, and D2S168 (table 1). Linkage was then confirmed for the two smaller families (families B and C) (fig. 1). Families A–C together give $Z_{\max} = 4.51$ at $\theta = 0$ for D2S390 (table 1). These cumulative two-point linkage results were confirmed by multipoint linkage analysis that showed the presence of association with the disease, between markers D2S131 and D2S390, with $Z_{\max} = 5.1$ at marker D2S144. Haplotype analysis in family A (fig. 1) showed a recombination event between the disorder and marker D2S131 in affected individual III:7, which demarcates the distal border of the linkage interval. Recombination at marker D2S352 in an affected male (individual III:5) established the proximal border of the region. Haplotype analysis of the two other small families with ODED syndrome showed a recombination event between mark-

ers D2S170 and D2S144 in an unaffected sibling (individual II:2) in family C. With the assumption of complete penetrance, this crossover event restricts the linkage area to 18 cM between D2S170 and D2S131. The haplotype of family C also showed a recombination within the minimal linkage region at marker D2S170 in II:3 (fig. 1). In family D, initial analysis showed that the chromosome 2 marker alleles in the affected mother and daughter are inconsistent with Mendelian inheritance for marker D2S149 (fig. 2). Alternative primers were designed for marker D2S149. Identical results were obtained, indicating that this apparently null allele could not be explained by a polymorphism in the primer sequences. Absence of a maternally inherited allele in individual II:1 was also detected for markers D2S2267, D2S149, D2S2295, D2S2346, D2S2155, and D2S332. The mother and the daughter each carried only a single allele for these markers. These data are consistent with the presence of a microdeletion of 2p23-p24, inherited by an affected daughter from her affected mother (fig. 2). The microdeletion was confirmed by in situ hybridization, by use of YACs 953G11, 916C7, and 875B11 (fig. 3 and data not shown). Each of these YACs gave only a single hybridization signal. We also tested these YACs for the presence of markers used in the marker study: D2S2346 was present in YAC 953G11; D2S312 gave signal in YAC 916C7 and in YAC 875B11. Other markers used in this study that have been reported to be present in these YACs (Whitehead Institute for Biomedical Research/MIT Center for Genome Research) are markers D2S2155 and D2S332, which are present in YAC 953G11, and marker D2S2346, which is present in YAC 916C7.

For markers D2S2199 and D2S320, two alleles were present in the affected child as well as in the mother. Therefore, these markers are outside the deletion, on either side (fig. 2). Marker D2S2267 showed only a single allele in the affected daughter. Whether this represents homozygosity or hemizyosity cannot yet be de-

Table 1

Combined Maximum LOD Scores for Families A–C with ODED Syndrome

Interval ^a (cM)	Marker	Z_{\max}	θ
3.7	D2S168	1.614	.143
.0	D2S2200	2.047	.108
2.9	D2S131	3.393	.050
12.3	D2S149	3.608	.001
2.7	D2S144	3.007	.001
.7	D2S170	2.891	.064
6.4	D2S390	4.510	.001
	D2S352	2.342	.106

^a Between marker indicated and that on line below.

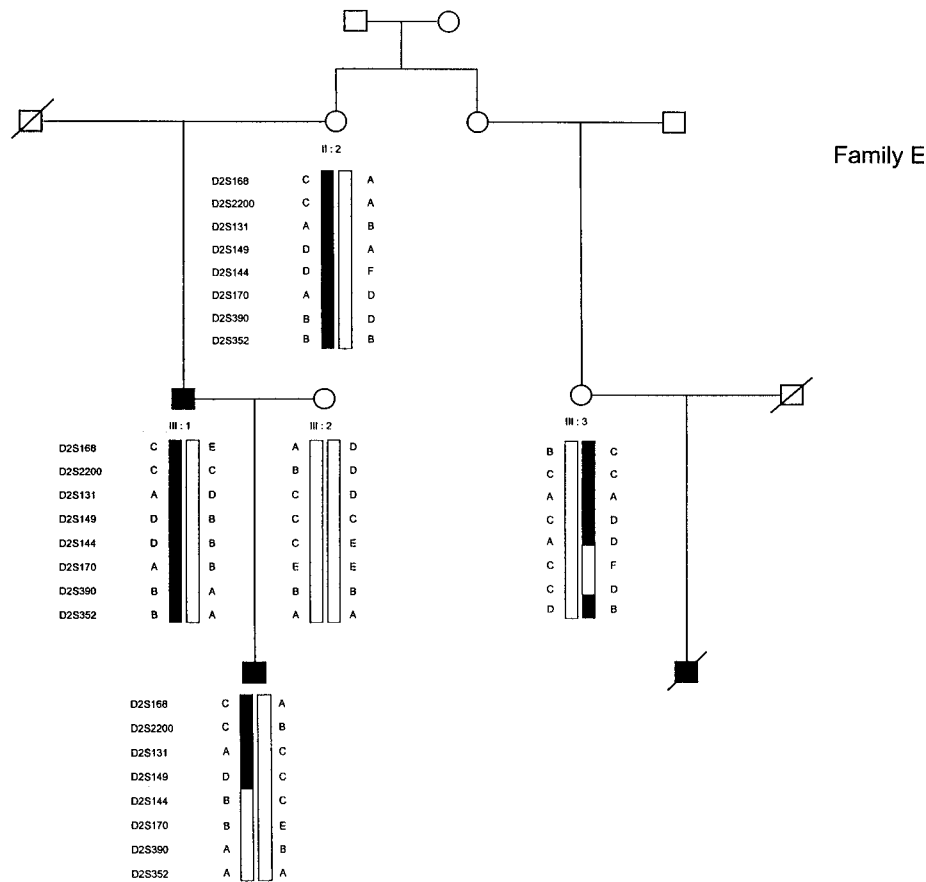


Figure 4 Pedigree of family E with nonsyndromic familial EA. Marker D2S149 segregates with the nonsyndromic form of familial EA. A recombination in individual IV-1 excludes markers proximal to D2S144.

terminated. The combined data from the linkage analysis in families A–C and the microdeletion in family D are consistent with a localization of the ODED-syndrome gene in 2p23-p24, between markers D2S2199 and D2S320.

It is currently unknown whether ODED syndrome is due to a mutation in a single gene or whether it might represent a contiguous-gene syndrome. Our finding of a small submicroscopic deletion in family D is consistent with both hypotheses. We decided to explore the hypothesis of a contiguous-gene syndrome by examining a family with nonsyndromic EA, for linkage to 2p23-p24. Interestingly, haplotype analysis in this small family with nonsyndromic EA (fig. 4) is also consistent with an assignment to 2p23-p24. However, the small size of this family precludes more-definitive conclusions, and the LOD score is only 0.35.

We identified the *SIX2* gene as a possible candidate, on the basis of homology mapping. The *Six2* gene is a member of the expanding family of homologues of the *Drosophila sine oculis* gene (Oliver et al. 1995). The *Six2* gene was originally cloned in the mouse (Oliver et

al. 1995). *Six2* maps on mouse chromosome 17, between *Lhcgr* (luteinizing hormone/choriogonadotropin receptor) and *Sos1*, both of which map to 2p21-p22 in humans. This suggests that the human *SIX2* gene might also map to this region. The pattern of mRNA expression during embryogenesis of *Six2* in the mouse is strikingly similar to what might be expected for the ODED-syndrome gene. *Six2* has prominent expression in the esophagus, pyloric region, hindbrain, and interdigital mesenchyme (Oliver et al. 1995). We used primers to amplify 546 bp of the human *SIX2* cDNA sequence containing the *Six* and homeobox domains (fig. 5). The analysis failed to identify any abnormalities in a panel of eight unrelated patients with ODED syndrome. Mapping of the human *SIX2* gene was performed with the Stanford Human Genome Center G3 Radiation Hybrid Panel (Research Genetics), by use of primers derived from the intronic sequences of the *SIX2* gene. The statistical evaluation of the results confirmed the predicted location for *SIX2* and placed it on chromosome 2, 20 cM from sequence-tagged-site marker SHGC-11647 (LOD score 5.76), within the 5.2-cM interval defined by

```
GccaccatgtccatgttggccCACCTTCGGCTTCACGCAGGAGCAAGTGGCGTGCGTGTG
CGAGGTGCTGCAGCAGGGGGCAACATCGAGCGGCTGGGCGCTTCCTGTGG
TGCCTGCCCGCTGGGAGCACCTTCACAAGAATGAAAgcgtgccaagccaagggcgtg
gTGGCTTCCACCCGGCAACTTCCGGGAGCTCTACAAGATCCTGGAGAGGCCA
ACAGTTCTCGCCGCACAACCCAGGCTCGAGCAGCTGTGGCTCAAGGCCAC
ACTACATCGAGGGCGGAGAAGCTGCCGGGGCCGCCCTGGGCGCGGTGGGCAA
ATACCCGCTGCCCGCAAATTCCTCGCTGCCCGCTCCATCTGGGACGGCGAG
GAGACCAGCTACTGCTTCAAGGAAAAGAGTCGCAGCGTGTCTGCCCGAGTGGTA
CGCGCACACCCCTACCCTTACCCTCCCGGAGAGCGTGTGGCGGAGGCC
ACGGGCTCACCACCACACAGGTGAGCAACTGGTTCAagaaccggcggcagcggcacc
ggcggccgagggccaaggaaaggagaaacaacgagaactccaattctaacagc
CACAAACCCTGAATGGCAGCGGCAAGTCGGTGTAGGCAGCTCGGAGGATGA
GAAGACTCCATCGGGGACGCCAGACCACTCATCATCCAGCCCGCACTGCTCC
TCAGCCCGCCCGCCCTGGGCTGCCGTCCCTGCACAGCCTGGGCCACCCTCC
GGGCCCCAGCGCAGTGCAGTGCCTGTCAGGGCGAGGTGGAGCGGACCC
ACTGCAACACCACCATGGCTGCAGGACTCCATCTCAACCCCATGTCAGCCAA
CCTCGTGGACCTGGGCTCTAGAG
```

Figure 5 Human *SIX2* partial cDNA sequence. Primers used are in italic lowercase type; start and stop codons are in boldface type; the *SIX* domain is underlined; and the homeobox domain is underlined twice.

Généthon markers D2S119 and D2S288. This is outside the ODED-syndrome critical region. These mapping results, as well as our failure to identify mutations in the two major domains of the *SIX2* gene, exclude it as the ODED-syndrome gene.

Discussion

We report the assignment of a gene for the autosomal dominant syndrome of EA, syndactyly, and microcephaly (ODED or Feingold syndrome) to the short arm of chromosome 2. Significant evidence for linkage was obtained in a large Dutch kindred. Analysis of two smaller kindreds confirmed the original assignment and narrowed the interval to a 18.3-cM region between markers D2S131 and D2S170.

In a smaller family, an apparently null allele for markers D2S2267, D2S149, D2S2295, D2S2346, D2S2155, and D2S332 was inherited by an affected daughter from her affected mother. These findings are best explained by a microdeletion in 2p23-p24. This interpretation was supported by FISH analysis, which indicated the presence of a single copy of probes from 2p23-2p24. The combined data from the linkage analysis and from the microdeletion suggest that the critical region for the ODED-syndrome gene lies in a 7.3-cM region between markers D2S2199 and D2S320 (fig. 6).

The *SIX2* gene appeared to be a strong candidate, on the basis of its expression pattern during mouse development (Oliver et al. 1995) and its localization in a mouse chromosome 17 region that is syntenic to human 2p21-p22. However, the lack of mutations in *SIX* and homeobox domains of *SIX2* in eight unrelated families with ODED syndrome and the subsequent localization of *SIX2* outside the ODED-syndrome critical interval, by means of radiation-hybrid mapping, excluded *SIX2* as the ODED-syndrome gene.

The ODED linkage region contains the locus for syn-

decan-1 precursor (*SYND1*), which is a possible positional candidate gene. The syndecans are a family of cell-surface heparan sulfate proteoglycans that interact with adhesion molecules, growth factors, and a variety of other molecules. *SYND1* is thought to function as a receptor for extracellular-matrix components and growth factors that are differentially expressed during development (David et al. 1993). *Synd1* is strongly expressed in esophageal, facial, and digital mesenchyme in mouse embryos (Mitsiadis et al. 1995). Fine mapping of the *SYND1* gene will be required in order to establish whether the gene is contained within the deletion area in family D.

Study of knockout mice may help to unravel the pathways that are involved in normal esophageal development. Several such targeted mutations have been reported to be associated with EA, but none of these genes map to the ODED-syndrome critical region. EA is present in mice mutants carrying nonfunctional alleles of *Hoxc4* (Boulet and Capecchi 1996) and in mice that have a homozygous null mutation for the *Gli2* gene (Motoyama et al. 1998). The human *GLI2* gene is located in 2q14, which is well outside the ODED-syndrome region identified here. Similarly, the occurrence of EA in mice that have a homozygous null mutation of the sonic hedgehog (*Shh*) gene (Litingtung et al. 1998) does not provide a likely explanation for EA in humans. The *SHH* gene is located on chromosome 7q36 in humans, and mutations are specifically associated with holoprosencephaly (Roessler et al. 1996).

Like many other structural malformations in humans, isolated EA is probably a multifactorial disorder. A number of familial cases have been identified (Casteels et al. 1993), but the actual recurrence risk is only ~1% in sporadic cases (van Staey et al. 1984). Because ODED syndrome carries a 30% risk of EA and/or duodenal atresia and because ODED syndrome is probably still underdiagnosed, it is possible that most cases of familial EA are in fact due to this syndrome. We have already identified four families with ODED syndrome from the Netherlands alone, indicating that the syndrome may not be extremely rare. Also, the microcephaly associated with the syndrome is mild and is associated with minimal learning disability or even normal intelligence (Brunner and Winter 1991; Feingold et al. 1997; Kawame et al. 1997). Some cases lack the distinctive toe syndactyly (Feingold et al. 1997) and may easily be misdiagnosed as nonsyndromic EA. Our finding of a microdeletion in 2p23-p24 in family D raises the possibility that ODED syndrome could represent a contiguous-gene syndrome. In this regard, it is of interest that the results of haplotype analysis conducted on a small family with nonsyndromic familial EA are consistent with a causative gene in 2p23-p24 (fig. 4). Families with autosomal dominant microcephaly (Rossi et al. 1987) and families with autosomal

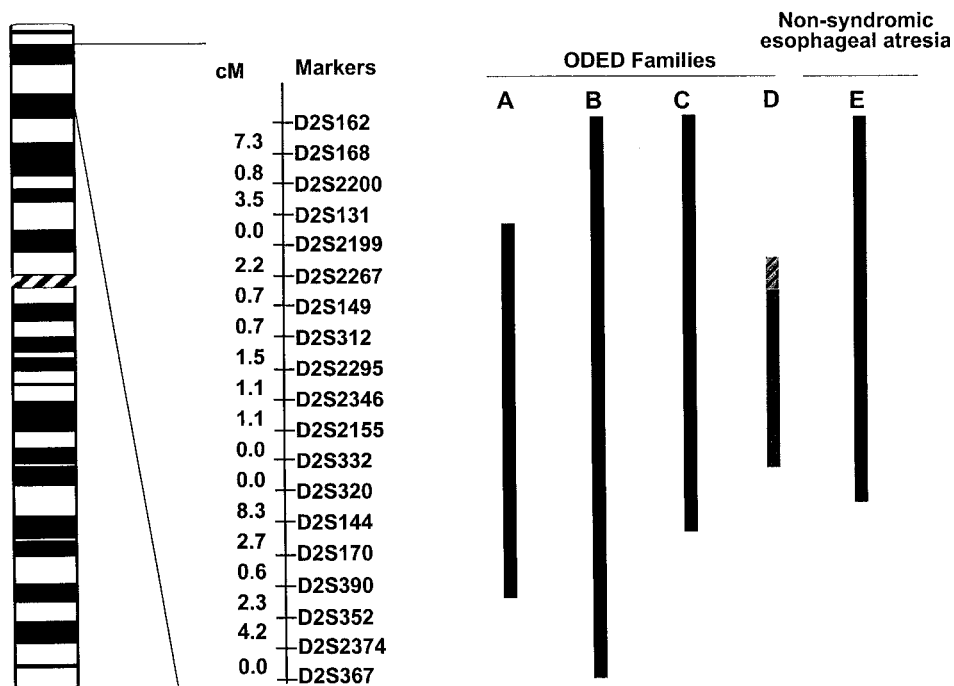


Figure 6 Comparison of linkage intervals for families A–C with ODED syndrome, the microdeletion in family D (the diagonally barred area indicates possible reduction of the deleted area; see text), and the cosegregating haplotype in nonsyndromic family E. In family E, the linkage interval continues more distally. Distances (in cM) between each marker and the next are indicated and are computed on the basis of average distances on the Génethon map for chromosome 2 (Dib et al. 1996).

dominant EA (Pletcher et al. 1991) but without other ODED-syndrome characteristics have been reported. If such families are also consistent with linkage to 2p23-p24, this would strengthen the hypothesis that ODED syndrome is in fact a microdeletion syndrome.

The best name for the syndrome studied here remains to be found. In view of the expanding phenotype, which now includes deafness and kidney anomalies in some cases, we suggest that the term “Feingold syndrome” be used, in preference to the acronyms “ODED,” “MODED,” or “MMT.”

In conclusion, haploinsufficiency of a gene or genes in 2p23-p24 causes syndromic EA (Feingold or ODED syndrome). Cloning of the ODED-syndrome gene should shed light on a significant proportion of inherited EA.

Acknowledgments

This study was supported by the Dutch Foundation for Scientific Research (Nederlandse Organisatie voor Wetenschappelijk Onderzoek) grant 901-04-183 (to H.G.B.), and the Dutch Liver-Gut Foundation, grant WS 97-81 (to H.v.B.). The skillful assistance of Saskia van de Velde-Visser, Liesbeth Boender-van Rossum, Bellinda van der Helm, Gerard Merckx, and Irene Janssen is gratefully acknowledged. We thank Dr. Hans Scheffer, Rijkuniversiteit Groningen, for chromosome 13 mapping.

Electronic-Database Information

Accession numbers and URLs for data in this article are as follows:

- Génethon, <http://www.genethon.fr/>
- Online Mendelian Inheritance in Man (OMIM), <http://www.ncbi.nlm.nih.gov/Omim/> (for VATER association [MIM 192350] and ODED syndrome [MIM 164280])
- Stanford Human Genome Center, <http://www-shgc.stanford.edu/>
- Whitehead Institute for Biomedical Research/MIT Center for Genome Research, <http://www-genome.wi.mit.edu/>

References

Båvik C, Ward SJ, Ong DE (1997) Identification of a mechanism to localize generation of retinoic acid in rat embryos. *Mech Dev* 69:155–167

Beasley SW, Allen M, Myers N (1997) The effects of Down syndrome and other chromosomal abnormalities on survival and management in esophageal atresia. *Pediatr Surg Int* 12: 550–551

Boles RG, Pober BR, Gibson LH, Willis CR, McGrath J, Roberts DJ, Yang Feng TL (1995) Deletion of chromosome 2q24-q31 causes characteristic digital anomalies: case report and review. *Am J Med Genet* 55:155–160

Boulet AM, Capecchi MR (1996) Targeted disruption of *Hoxc*

- 4 causes esophageal defects and vertebral transformations. *Dev Biol* 177:232-249
- Brewer C, Holloway S, Zawalynski P, Schinzel A, FitzPatrick D (1998) A chromosomal deletion map of human malformations. *Am J Hum Genet* 63:1153-1159
- Brickell P, Thorogood P (1997) Retinoic acid and retinoic acid receptors in craniofacial development. *Semin Cell Dev Biol* 8:437-443
- Brunner HG, Winter RM (1991) Autosomal dominant inheritance of abnormalities of the hands and feet with short palpebral fissures, variable microcephaly with learning disability, and esophageal/duodenal atresia. *J Med Genet* 28:389-394
- Casteels K, Devlieger H, Lerut T, Eggermont E (1993) Familiaal voorkomen van slokdarmatresie (in Dutch). *Tijdschr Kindergeneeskde* 61:100-102
- Chomczynski P, Sacchi N (1987) Single-step method of RNA isolation by acid guanidinium thiocyanate-phenol-chloroform extraction. *Anal Biochem* 162:156-168
- Courteens W, Levi S, Verbelen F, Verloes A, Vamos E (1997) Feingold syndrome: report of a new family and review. *Am J Med Genet* 73:55-60
- David G, Bai XM, Van der Schueren B, Marynen P, Cassiman JJ, Van den Berghe H (1993) Spatial and temporal changes in the expression of fibroglycan (syndecan-2) during mouse embryonic development. *Development* 119:841-854
- David TJ, O'Callaghan SE (1975) Esophageal atresia in the south west of England. *J Med Genet* 12:1-11
- Dib C, Faure S, Fizames C, Samson D, Drouot N, Vignal A, Millasseau P, et al (1996) A comprehensive genetic map of the human genome based on 5,264 microsatellites. *Nature* 380:152-154
- Dickman ED, Thaller C, Smith SM (1997) Temporally regulated retinoic acid depletion produces specific neural crest, ocular and nervous system defects. *Development* 124:3111-3121
- Digilio MC, Marino B, Bagolan P, Giannotti A, Dallapiccola B (1999) Microdeletion 22q11 and esophageal atresia. *J Med Genet* 36:137-139
- Feingold M (1975) Case report 30. *Syndrome Identification* 3:16-17
- Feingold M, Hall BD, Lacassie Y, Martinez Frias ML (1997) Syndrome of microcephaly, facial and hand abnormalities, tracheoesophageal fistula, duodenal atresia, and developmental delay. *Am J Med Genet* 69:245-249
- Frydman M, Katz M, Cabot SG, Soen G, Kauschansky A, Sirota L (1997) MODED: microcephaly oculo digito esophageal duodenal syndrome. *Am J Med Genet* 71:251-257
- Innis JW, Asher JH Jr, Poznanski AK, Sheldon S (1997) Autosomal dominant microcephaly with normal intelligence, short palpebral fissures, and digital anomalies. *Am J Med Genet* 71:150-155
- Kawame H, Pagon RA, Hudgins L (1997) Digital anomalies, microcephaly, and normal intelligence: new syndrome or Feingold syndrome? *Am J Med Genet* 69:240-244
- Kimble RM, Harding J, Kolbe A (1997) Additional congenital anomalies in babies with gut atresia or stenosis: when to investigate, and which investigation. *Pediatr Surg Int* 12:565-570
- König R, Selzer G, Stolp A, Fuchs S (1990) Microcephaly, mesobrachyphalangy, and tracheoesophageal fistula: MMT syndrome. *Dysmorph Clin Genet* 4:83-86
- Litingtung Y, Lei L, Westphal H, Chiang C (1998) Sonic hedgehog is essential to foregut development. *Nat Genet* 20:58-61
- Miller SA, Dykes DD, Polesky HF (1988) A simple salting out procedure for extracting DNA from human nucleated cells. *Nucleic Acid Res* 16:1215
- Mitsiadis TA, Salmivirta M, Muramatsu T, Muramatsu H, Rauvala H, Lehtonen E, Jalkanen M, et al (1995) Expression of the heparin-binding cytokines, midkine (MK), and HB-GAM (pleiotrophin) is associated with epithelial-mesenchymal interactions during fetal development and organogenesis. *Development* 121:37-51
- Motoyama J, Liu J, Mo R, Ding Q, Post M, Hui CC (1998) Essential function of Gli2 and Gli3 in the formation of lung, trachea, and esophagus. *Nat Genet* 20:54-57
- Oliver G, Wehr R, Jenkins NA, Copeland NG, Chetty BN, Hartenstein V, Zipursky SL, et al (1995) Homeobox genes and connective tissue patterning. *Development* 121:693-705
- Peters H, Schuster G, Neubuser A, Richter T, Hofler H, Balling R (1997) Isolation of the Pax9 cDNA from adult human esophagus. *Mamm Genome* 8:62-64
- Pletcher BA, Friedes JS, Breg WR, Touloukian RJ (1991) Familial occurrence of esophageal atresia with and without tracheoesophageal fistula: report of two unusual kindreds. *Am J Med Genet* 39:380-384
- Pulkkinen L, Kimonis VE, Xu Y, Spanou EN, McLean WH, Uitto J (1997) Homozygous alpha6 integrin mutation in junctional epidermolysis bullosa with congenital duodenal atresia. *Hum Mol Genet* 6:669-674
- Roessler E, Belloni E, Gaudenz K, Jay P, Berta P, Scherer SW, Tsui LC, et al (1996) Mutations in the human Sonic Hedgehog gene cause holoprosencephaly. *Nat Genet* 14:357-360
- Rossi LN, Candini G, Scarlatti G, Rossi G, Prina E, Alberti S (1987) Autosomal dominant microcephaly without mental retardation. *Am J Dis Child* 141:655-659
- Suijkerbuijk RF, Looijenga L, de Jong B, Oosterhuis JW, Cassiman JJ, Geurts van Kessel A (1992) Verification of isochromosome 12p and other chromosome 12 aberrations in gonadal and extragonadal human germ cell tumors by bicolor fluorescence in situ hybridization. *Cancer Genet Cytogenet* 63:8-16
- Szendrey T, Danyi G, Czeizel A (1985) Etiological study on isolated esophageal atresia. *Hum Genet* 70:51-58
- van Staey M, De Bie S, Matton MT, De Roose J (1984) Familial congenital esophageal atresia: personal case report and review of the literature. *Hum Genet* 66:260-266