



## UvA-DARE (Digital Academic Repository)

### Diagnostic analysis of th Rubinstein-Taybi syndrome: five cosmids should be used for microdeletion detection and low number of protein truncating mutations

Petrij, F.; Dauwerse, H.G.; Blough, R.I.; Giles, R.H.; van der Smagt, J.J.; Wallerstein, R.; Maaswinkel-Mooy, P.D.; van Karnebeek, C.D.; van Ommen, G-J.B.; van Haeringen, A.; Rubinstein, J.H.; Saal, H.M.; Hennekam, R.C.M.; Peters, D.J.M.; Breuning, M.H.

**DOI**

[10.1136/jmg.37.3.168](https://doi.org/10.1136/jmg.37.3.168)

**Publication date**

2000

**Document Version**

Final published version

**Published in**

Journal of Medical Genetics

[Link to publication](#)

**Citation for published version (APA):**

Petrij, F., Dauwerse, H. G., Blough, R. I., Giles, R. H., van der Smagt, J. J., Wallerstein, R., Maaswinkel-Mooy, P. D., van Karnebeek, C. D., van Ommen, G-JB., van Haeringen, A., Rubinstein, J. H., Saal, H. M., Hennekam, R. C. M., Peters, D. J. M., & Breuning, M. H. (2000). Diagnostic analysis of th Rubinstein-Taybi syndrome: five cosmids should be used for microdeletion detection and low number of protein truncating mutations. *Journal of Medical Genetics*, 37, 168-176. <https://doi.org/10.1136/jmg.37.3.168>

**General rights**

It is not permitted to download or to forward/distribute the text or part of it without the consent of the author(s) and/or copyright holder(s), other than for strictly personal, individual use, unless the work is under an open content license (like Creative Commons).

**Disclaimer/Complaints regulations**

If you believe that digital publication of certain material infringes any of your rights or (privacy) interests, please let the Library know, stating your reasons. In case of a legitimate complaint, the Library will make the material inaccessible and/or remove it from the website. Please Ask the Library: <https://uba.uva.nl/en/contact>, or a letter to: Library of the University of Amsterdam, Secretariat, Singel 425, 1012 WP Amsterdam, The Netherlands. You will be contacted as soon as possible.

UvA-DARE is a service provided by the library of the University of Amsterdam (<https://dare.uva.nl>)



## Diagnostic analysis of the Rubinstein-Taybi syndrome: five cosmids should be used for microdeletion detection and low number of protein truncating mutations

Fred Petrij, Hans G Dauwerse, Ruthann I Blough, Rachel H Giles, Jasper J van der Smagt, Robert Wallerstein, Petra D Maaswinkel-Mooy, Clara D van Karnebeek, Gert-Jan B van Ommen, Arie van Haeringen, Jack H Rubinstein, Howard M Saal, Raoul C M Hennekam, Dorien J M Peters and Martijn H Breuning

*J. Med. Genet.* 2000;37;168-176  
doi:10.1136/jmg.37.3.168

---

Updated information and services can be found at:  
<http://jmg.bmj.com/cgi/content/full/37/3/168>

---

*These include:*

### References

This article cites 40 articles, 6 of which can be accessed free at:  
<http://jmg.bmj.com/cgi/content/full/37/3/168#BIBL>

9 online articles that cite this article can be accessed at:  
<http://jmg.bmj.com/cgi/content/full/37/3/168#otherarticles>

### Rapid responses

You can respond to this article at:  
<http://jmg.bmj.com/cgi/eletter-submit/37/3/168>

### Email alerting service

Receive free email alerts when new articles cite this article - sign up in the box at the top right corner of the article

---

### Topic collections

Articles on similar topics can be found in the following collections

[Genetics](#) (3947 articles)

---

### Notes

---

To order reprints of this article go to:  
<http://www.bmjournals.com/cgi/reprintform>

To subscribe to *Journal of Medical Genetics* go to:  
<http://www.bmjournals.com/subscriptions/>

## Original articles

## Diagnostic analysis of the Rubinstein-Taybi syndrome: five cosmids should be used for microdeletion detection and low number of protein truncating mutations

Departments of  
Human and Clinical  
Genetics, Leiden  
University Medical  
Center,  
Wassenaarseweg 72,  
2333 AL Leiden,  
The Netherlands

F Petrij  
H G Dauwerse  
R H Giles  
J J van der Smagt  
G-J B van Ommen  
A van Haeringen  
D J M Peters  
M H Breuning

Department of Clinical  
Genetics, Erasmus  
University, Rotterdam,  
The Netherlands  
F Petrij

Cincinnati Center for  
Developmental  
Disorders, Children's  
Hospital Medical  
Center, Cincinnati,  
USA

R I Blough  
J H Rubinstein  
H M Saal

Department of  
Paediatrics, Leiden  
University Medical  
Center, Leiden,  
The Netherlands  
P D Maaswinkel-Mooy

Department of  
Pediatrics, New York  
University School of  
Medicine, New York,  
USA  
R Wallerstein

Departments of  
Human Genetics and  
Paediatrics, University  
of Amsterdam,  
Academic Medical  
Center, Amsterdam,  
The Netherlands  
R C M Hennekam  
C D van Karnebeek

Correspondence to:  
Dr Peters

Revised version received  
1 October 1999  
Accepted for publication  
18 October 1999

Fred Petrij, Hans G Dauwerse, Ruthann I Blough, Rachel H Giles, Jasper J van der Smagt, Robert Wallerstein, Petra D Maaswinkel-Mooy, Clara D van Karnebeek, Gert-Jan B van Ommen, Arie van Haeringen, Jack H Rubinstein, Howard M Saal, Raoul C M Hennekam, Dorien J M Peters, Martijn H Breuning

### Abstract

**Rubinstein-Taybi syndrome (RTS) is a malformation syndrome characterised by facial abnormalities, broad thumbs, broad big toes, and mental retardation. In a subset of RTS patients, microdeletions, translocations, and inversions involving chromosome band 16p13.3 can be detected. We have previously shown that disruption of the human CREB binding protein (*CREBBP* or *CBP*) gene, either by these gross chromosomal rearrangements or by point mutations, leads to RTS. *CBP* is a large nuclear protein involved in transcription regulation, chromatin remodeling, and the integration of several different signal transduction pathways. Here we report diagnostic analysis of *CBP* in 194 RTS patients, divided into several subsets. In one case the mother is also suspect of having RTS. Analyses of the entire *CBP* gene by the protein truncation test showed 4/37 truncating mutations. Two point mutations, one 11 bp deletion, and one mutation affecting the splicing of the second exon were detected by subsequent sequencing. Screening the *CBP* gene for larger deletions, by using different cosmid probes in FISH, showed 14/171 microdeletions. Using five cosmid probes that contain the entire gene, we found 8/89 microdeletions of which 4/8 were 5' or interstitial. This last subset of microdeletions would not have been detected using the commonly used 3' probe RT1, showing the necessity of using all five probes.**

(*J Med Genet* 2000;37:168-176)

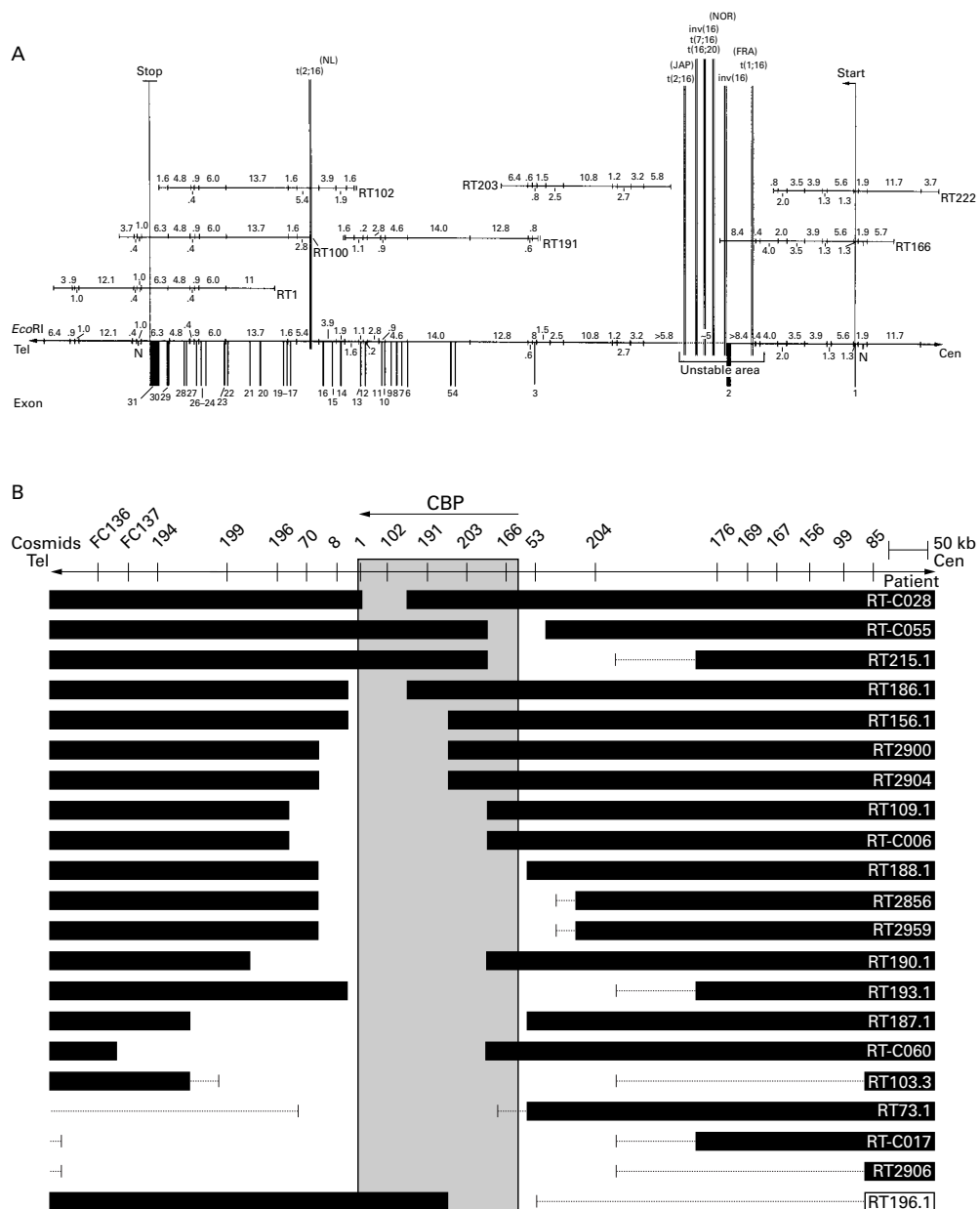
Keywords: Rubinstein-Taybi syndrome (RTS); CREB binding protein (CBP/CREBBP); protein truncation test (PTT); microdeletion

Rubinstein-Taybi syndrome (RTS) (MIM 180849), characterised by mental retardation, broad thumbs, broad big toes, and facial

abnormalities, was described in 1963 by Rubinstein and Taybi.<sup>1</sup> About three decades later, the first chromosomal translocations<sup>2,3</sup> and microdeletions<sup>4</sup> associated with this syndrome were reported. In 1995, we cloned the gene encoding the human CREB binding protein (CREBBP, hereafter called CBP) (MIM 600140/GDB:437159) and found that mutations in this gene lead to RTS.<sup>5</sup>

CBP was first described in the mouse (Cbp) by Chrivia *et al*<sup>6</sup> in 1993 as a transcriptional coactivator. The protein was named for its interaction with the cyclic AMP regulated enhancer binding (CREB) protein. Although CBP and its homologue p300 were originally proposed to function as transcriptional coactivators by forming a physical bridge between the different components of the transcription machinery, recent evidence suggests that their potent histone acetyltransferase (HAT) activity "opens" the chromatin structure, allowing transcription factors access to the DNA. Furthermore, they are mediators of different signalling pathways and participants in basic cellular functions, such as DNA repair, cell growth, cell differentiation, apoptosis, and tumour suppression.<sup>7</sup> Owing to the fact that CBP and p300 are central to multiple signal transduction pathways, thereby regulating the expression of many genes, it is difficult to relate this wide variety of functions to the characteristic manifestations of Rubinstein-Taybi syndrome.

To date, all reports using FISH analysis to detect microdeletions in RTS patients have made use of the RT1 probe (D16S237). In 19/159 (12.0%) of these RTS cases, the FISH signal on one of the chromosomes 16 was lost.<sup>4,8-11</sup> However, the RT1 cosmid probe only covers about 29 kb of the 3' end of the *CBP* gene, whereas the transcribed part of the gene spans 146 kb of genomic DNA (fig 1A). We therefore extended the screening for microdeletions with four additional cosmids in order to cover the entire *CBP* coding region. In one of these 159 analysed cases a de novo



**Figure 1** Distribution of RTS gross chromosomal rearrangements. (A) Seven translocation and inversion breakpoints and their distribution over the *CBP* gene area, depicted in a minimal tiling path cosmid contig with a refined EcoRI/NotI restriction map. Numbers above and below the DNA line are EcoRI fragment sizes. N=NotI sites. Fragment sizes and exon-intron structure were established by comparing the genomic sequence of the *CBP* gene (GenBank Accession Nos AC 005564, 004495, 004509, 004651, and 004760) with that of the mRNA (GenBank Accession No U85962) (depicted without 5' and 3' UTR). (B) Schematic representation of 21 RTS microdeletions. When a microdeletion was found, flanking DNA up to 780 kb was screened by FISH with more cosmids in order to determine the size of the deletion. Black bars represent the undeleted DNA. Thin lines represent uncloned or untested areas.

translocation t(1;16) was detected.<sup>10</sup> Five of the six other reported translocations and inversions (table 1) map to an area of approximately 13 kb at the 5' end of *CBP* (fig 1A). The breakpoints

**Table 1** Translocations and pericentric inversions reported in RTS

Chromosomal rearrangement	References
t(2;16) <sup>(JAP)</sup>	(p13.3;p13.3) Imaizumi and Kuroki <sup>2</sup>
t(7;16)	(q34;p13.3) Tommerup <i>et al</i> <sup>3</sup>
inv(16) <sup>(FRA)</sup>	(p13.3;q13) Lacombe <i>et al</i> <sup>13</sup>
inv(16) <sup>(NOR)</sup>	Unknown Breuning <i>et al</i> <sup>4</sup> Petrij <i>et al</i> <sup>5</sup>
t(16;20)	(p;q) Petrij <i>et al</i> <sup>6</sup>
t(2;16) <sup>(NL)</sup>	(q36.3;p13.3) Petrij <i>et al</i> <sup>6</sup>
t(1;16)	(p34.1;p13.2) Wallerstein <i>et al</i> <sup>10</sup>

involved in acute myeloid leukaemia (AML) associated with the somatic translocation t(8;16) (p11;p13.3), in which a large part of *CBP* is fused to an acetyl transferase gene called monocytic leukaemia zinc finger protein (*MOZ*) on 8p11,<sup>12-14</sup> map to the same area.

Previously we have shown that not only gross chromosomal rearrangements involving chromosome band 16p13.3 but also point mutations in the *CBP* gene lead to RTS.<sup>5</sup> To obtain these results we used the protein truncation test (PTT), in which gene specific fragments are transcribed and translated in vitro in order to detect translational stops.<sup>15</sup> Analyzing the first 1.2 kb of *CBP* in a series of

Table 2 Molecular studies on patients with Rubinstein-Taybi syndrome

References	Patients investigated	Microdeletion (1-5 cosmids)	5 cosmids tested	Microdeletion (5 cosmids)	Non 3' deletion (RT1/RT100 not deleted)	Presented in fig 1B	Translocation	PTT (entire CBP)	Truncated CBP			
Breuning <i>et al</i> <sup>4</sup>	24	6	25.0%	—	—	—	—	(12)	—			
Masuno <i>et al</i> <sup>8</sup>	25	1	4.0	—	—	—	—	—	—			
McGaughan <i>et al</i> <sup>9</sup>	16	2	12.5	—	—	—	—	—	—			
Wallerstein <i>et al</i> <sup>10</sup>	64	7	10.9	—	—	—	—	—	—			
Taine <i>et al</i> <sup>11</sup>	30	3	10.0	—	—	—	t(1;16)	—	—			
<b>Published microdeletions</b>	<b>159</b>	<b>19</b>	<b>12.0</b>	—	—	—	—	—	—			
<i>Present study</i>												
Blough <i>et al</i> <sup>8</sup>	66	5	7.6%	66	5	7.6%	2	5	(14)	—		
Unique to this paper	105	9	8.6	23	3	13.0	2	6	—	—		
<b>Microdeletions in this study</b>	<b>171</b>	<b>14</b>	<b>8.2</b>	<b>89</b>	<b>8</b>	<b>9.0</b>	<b>4</b>	<b>11</b>	—	—		
<b>Microdeletions total</b>	<b>330</b>	<b>33</b>	<b>10.0</b>	<b>89</b>	<b>8</b>	<b>9.0</b>	<b>4</b>	<b>21</b>	—	—		
Petrij <i>et al</i> <sup>5</sup>	16*	—	—	—	—	—	—	—	t(2;16)	16	2	12.5%
Blough <i>et al</i> <sup>8</sup>	66†	—	—	—	—	—	—	—	—	14	0	0.0
Unique to this paper	—	—	—	—	—	—	—	—	—	7	2	28.6
<b>PTT total</b>	—	—	—	—	—	—	—	—	—	<b>37</b>	<b>4</b>	<b>10.8</b>

In total we report on mutation analysis of 194 RTS patients; 157 were tested with FISH, 23 with PTT, and 14 with both techniques.

\*16 non-microdeletion cases, including 12 from Breuning *et al*,<sup>4</sup> were investigated for only the first 1.2 kb of the *CBP* transcript by PTT.

†Blough *et al* found 5/66 microdeletions by FISH; of the remaining 61 cases, 14 were investigated by PTT.

16 patients with a clear clinical diagnosis of RTS, two were found to have a single base pair substitution resulting in a premature translation stop. These results suggested that the PTT was an appropriate method for *CBP* mutation detection in RTS. We then sequenced the entire *CBP* transcript<sup>14</sup> (GenBank Accession No U85962) and developed an additional series of primers covering all of *CBP*. In this report we describe the PTT analyses of the entire 7.3 kb *CBP* coding region in eight overlapping fragments (varying in size from 0.6 to 1.9 kb) in an additional 35 RTS cases.

## Methods

### CLINICAL DIAGNOSIS AND PATIENTS

Rubinstein-Taybi syndrome is clinically defined by mental retardation, broad thumbs, broad big toes, growth retardation, and facial abnormalities. Important additional features are microcephaly, broadening of other fingers, radial deviation of the thumbs, malpositioned or crowded teeth with or without talon cusp, hypotonia, lax ligaments, stiff gait, hirsutism, cryptorchidism, glaucoma, recurrent respiratory infections, feeding problems, and keloid formation.<sup>1-16</sup> The prevalence of RTS has been estimated to be 1 in 100 000 to 125 000 living newborns.<sup>17</sup> All 194 patients in our study exhibited several features of the syndrome, establishing the clinical diagnosis. Patients originated from western Europe, Israel, and the United States and were referred to us for cytogenetic/molecular evaluation by clinical geneticists and paediatricians.

In one case the mother was also suspected of having RTS. At the age of 4 years the son had clear developmental delay with no speech (only sounds) and initial feeding problems. Furthermore, there were downward slanting palpebral fissures, long eyelashes, prominent nose, columella below the alae nasi, malpositioned ears with dysplastic helices, broad thumbs, somewhat broad toes, fetal pads, angulated penis, cryptorchidism, hirsutism, postnatal growth retardation, and a small head circumference. The karyotype was normal and no microdeletions could be detected (screened with five

probes covering the entire *CBP* gene). We were not able to investigate the mother fully, but she had a prominent beaked nose with the collumella below the alae nasi, broad, short thumbs, which showed strikingly broad, short distal phalanges on x ray, broad big toes, long eyelashes, downward slanting palpebral fissures, and low intelligence. Her physical appearance is different from that of her two unaffected brothers, but she does resemble her son with RTS. She and her partner are non-consanguineous. The boy with RTS was their first born child and they later gave birth to a second healthy son.

Of the 194 patients in this report, 86 have previously been reported, 66 of them by us<sup>18</sup> in a FISH study using the five cosmids covering *CBP*. The five microdeletions that were found were analysed in our present study for their deletion sizes and 14 non-microdeletion cases were checked for truncating mutations by PTT. Twelve non-microdeletion cases, which we also previously reported and included in a microdeletion detection study,<sup>14</sup> were analysed for truncating mutations by PTT in this study. Four cases exhibiting RT1 microdeletions, reported earlier by Wallerstein *et al*,<sup>10</sup> were analysed here for their deletion sizes. Three microdeletions and one translocation mentioned briefly in an earlier report<sup>9</sup> were analysed in more detail. In total, 171 cases were investigated for microdeletions and translocations by FISH, and 37 cases for truncating mutations by PTT (table 2).

### CYTOGENETIC ANALYSES

Almost all patients were karyotyped using standard cytogenetic methods followed by metaphase FISH analysis with one or more cosmid probes from the *CBP* gene area. The following cosmids were used: RT1, RT100, RT102, RT191, RT203, and RT166 (fig 1A and Giles *et al*<sup>14</sup>). Together they cover the entire *CBP* gene, except for the ~5 kb uncloned area between RT203 and RT166. For every cosmid, 30 metaphases per patient were examined for the presence of fluorescent dots on both chromosomes 16. At least 27 of the 30 metaphases must lack cosmid signal to be scored as deleted. In the beginning of our research we

Table 3 Protein truncation test PCR amplification of human *CBP* cDNA

Fragment	<i>CBP</i> nucleotides	Primers	Primer sequence
A	-15 - 1155	pRT7	5'-GGATCCTAATACGACTCACTATAGGGCGCGAGCAGGTGAAAATGG-3'
		pRT6	5'-GCGAGCAGGCCCGAACCTCTC-3'
B	739 - 2125	pRT38	5'-GCTAATACGACTCACTATAGGAACAGACCACCATGGTTTCCCCGCAAATGACTGGTCAC-3'
		pRT36	5'-ACAGGGGTCCATTGGAGGTCTC-3'
C	1794 - 2687	pRT41	5'-GCTAATACGACTCACTATAGGAACAGACCACCATGGACCTGCGGAGCCATCTAGTGCAT-3'
		pRT40	5'-CCGGAAGACGACACAGGAGTTG-3'
D	2469 - 3958	pRT43	5'-GCTAATACGACTCACTATAGGAACAGACCACCATGGTGCCTGGTGTCTCTTCTTAAC-3'
		pRT32	5'-TTCGAGGTCTGCCAGTTTTCTTCAA-3'
E1	3776 - 4640	pRT8	5'-GGATCCTAATACGACTCACTATAGGGAGACCACCATGGAGACGACAATTTCAAAGGATCAG-3'
		pRT2	5'-TTGGGCCAGAAATCACCTTCAA-3'
E2 primary	3284 - 4640	pRT45	5'-GCTAATACGACTCACTATAGGAACAGACCACCATGGTGCCAACCCCTAGAAGCACTGTATCG-3'
		pRT2	5'-TTGGGCCAGAAATCACCTTCAA-3'
E2 booster	3284 - 4409	pRT45	5'-GCTAATACGACTCACTATAGGAACAGACCACCATGGTGCCAACCCCTAGAAGCACTGTATCG-3'
		pRT33	5'-TGCCCTGTACATACCCTAATTTTC-3'
F	4340 - 5519	pRT46	5'-GCTAATACGACTCACTATAGGAACAGACCACCATGGCAGCCGTTTACCATGAGATCCTTATTG-3'
		pRT23	5'-ACGGGGCATTGTTTTCTTGG-3'
G primary	4866 - 5671	pRT31	5'-TGCCACCATGGAGAAGCAAG-3'
		pRT10	5'-CGGGCGGTGTGAGGTAGGAG-3'
G booster	5100 - 5671	pRT56	5'-GCTAATACGACTCACTATAGGAACAGACCACCATGGACCGCTTTGTCTACACCTGCAACG-3'
		pRT10	5'-CGGGCGGTGTGAGGTAGGAG-3'
H primary	4599 - 7395	pRT18	5'-CCAAGAAAACAAATGCCCCGT-3'
		pRT15	5'-GATGCCTGGATTTTCAGTACAAA-3'
H booster	5507 - 7381	pRT62	5'-GCTAATACGACTCACTATAGGAACAGACCACCATGGACAAATGCCCCGTGCCCTTC-3'
		pRT63	5'-CAGTACAAAAGGTCCAAGAACATGAAAGG-3'
Stop	7327 - 7329		(TAG)

First primer of each set has a forward orientation, the second reverse. Positions relative to the *CBP* cDNA are given, in which position 1 represents the translation start. Nucleotide numbers represent the complete PCR product, including both primers. Endogenous (pRT7) or artificial translation start sites (ATG) are underlined. Start sites are preceded by an eukaryotic T7 promoter sequence and a Kozak sequence.

used cosmid RT1,<sup>4</sup> which contains an insert of 51 kb. Because of instability this cosmid was replaced by RT100, which also covers the 3' end of the *CBP* gene (fig 1A). Probes are made available online for diagnostic purposes at cost price by the Genome Technology Centre (GTC), Leiden. When a microdeletion was detected, further analyses with cosmid probes from the adjacent area(s) were performed in order to determine the size of the microdeletion (fig 1B). One or two colour FISH was performed as described previously.<sup>19-21</sup>

#### RT-PCR, PTT, AND SEQUENCING

Total RNA was isolated from EBV transformed lymphoblastoid cell lines or peripheral blood and reverse transcribed with random hexamers. Primers used to amplify *CBP* cDNA fragments were selected with the help of Oligo 4.1 primer analysis software (National Biosciences) for optimal performance (table 3). PCR products were selected with a minimum

overlap of 150 bp, necessary to have full coverage for the PTT; otherwise truncations of the artificially made protein fragments at the beginning or the end will be missed.

Expression levels of *CBP* are sufficient to perform a single RT-PCR for most fragments, directly using the PTT-primers (that is, a eukaryotic T7 promoter sequence and Kozak sequence added to a 5' gene specific sequence and a second reversely orientated gene specific primer) on the cDNA pools (fragments A-D, E1, and F). For some patients, a second (booster) PCR with the same primer set had to be performed to improve yield. The PTT often requires the use of a primary PCR from which a booster PCR is performed using the PTT-primers in a nested or hemi-nested PCR reaction. In fragments E2, G, and H, the PTT primers were used in such a (hemi-) nested fashion (fig 2). In the case of pRT7, we used the endogenous translation initiation site and 15 bp of the 5' UTR of *CBP* instead of the

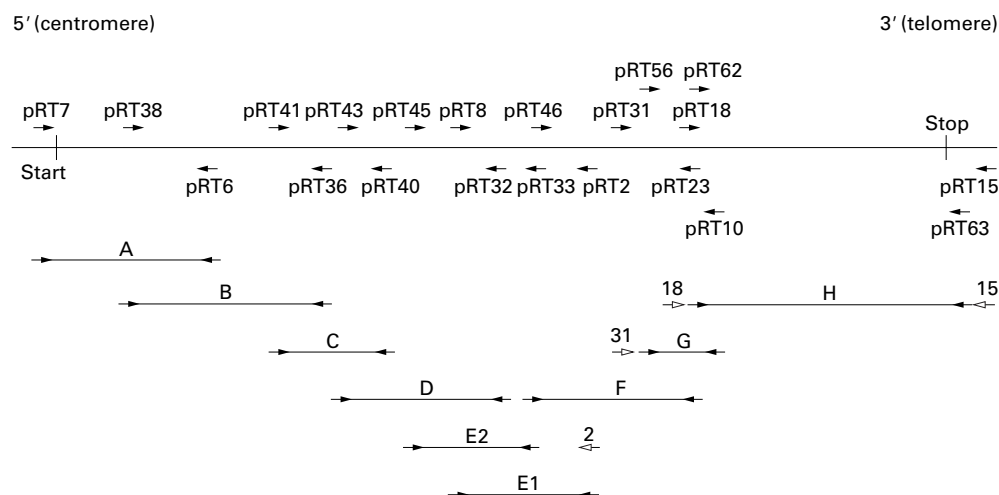


Figure 2 RT-PCR fragments for the protein truncation test (PTT) covering *CBP*. Arrowheads represent primers used. Open arrowheads represent primers used in primary PCRs for those fragments requiring both a primary and secondary (booster) PCR.

standard eukaryotic in frame translation initiation sequence.

In all PCR reactions we used 10 pmol of each primer, 1.5 mmol/l  $MgCl_2$ , 10 mmol/l Tris-HCl, pH 8.9, 50 mmol/l KCl, 0.01% gelatine, 10% glycerol, 0.2 mg/ml BSA, 0.2 mmol/l dGTP, 0.2 mmol/l dATP, 0.2 mmol/l dTTP, 0.2 mmol/l dCTP, and 3 U Gibco BRL recombinant *Taq* DNA polymerase. The buffer was stored in a 10 × concentration at  $-20^{\circ}C$  without glycerol,  $MgCl_2$ , or *Taq* DNA polymerase and was frozen at least once before use. Initial denaturing was performed for four minutes at  $94^{\circ}C$ , followed by 40 cycles of one minute denaturing at  $94^{\circ}C$ , one minute annealing at  $57^{\circ}C$ , 1.5 minutes extension at  $72^{\circ}C$ , and then final extension for five minutes at  $72^{\circ}C$ . A Hybaid Ltd OmniGene temperature cycler with Biozym thin wall 0.5 ml microcentrifuge tubes were used. The end volume of the reactions was 50  $\mu$ l. Booster PCRs were performed in the same fashion by using 1  $\mu$ l of the primary PCR product as template and only 30 PCR cycles. In the 1.9 kb fragment H, best results were obtained by extending the extension at  $72^{\circ}C$  to two minutes and by using 32 cycles in both primary and booster PCR. Since this fragment is located within *CBP*'s large final exon,<sup>14</sup> this PCR was performed on 30–100 ng genomic DNA. All PCR products were analysed for yield and quality on standard 0.8% agarose gels stained with ethidium bromide.

In this study we performed the protein truncation test as described by Roest *et al.*<sup>15</sup> Sequencing was performed with a USB/Amersham Sequenase PCR Product Sequencing Kit according to the manufacturer's recommendations or by standard dideoxy terminating chemistry on a Perkin Elmer ABI automated sequencer using the Cycle Sequencing Ready Reaction Kit (Perkin Elmer, Cat No 430349).

#### DNA EXTRACTION AND SOUTHERN BLOT HYBRIDISATION

Genomic DNA was isolated directly from peripheral blood or EBV transformed lymphoblastoid cell lines. In the RTS case where the mother is also suspected of having RTS, genomic DNA was digested with *Bam*HI, *Bgl*II, *Eco*RI, *Eco*RV, *Hind*III, *Pst*I, *Sfi*I, *Stu*I, and *Sty*I restriction endonucleases in One-Phor-All buffer PLUS (Pharmacia). DNA was electrophoresed on standard agarose gels and transferred to Hybond N+ (Amersham) nylon membranes according to the manufacturer's recommendations. Hybridisation probes were <sup>32</sup>P radiolabelled using random hexamers (Amersham), and repetitive elements were blocked by competition with 120  $\mu$ g of sonicated human placenta DNA for two hours. Membranes were hybridised overnight at  $68^{\circ}C$ , washed stringently, and autoradiographed overnight.

## Results

#### KARYOTYPING

In one patient of Dutch origin, karyotyping showed a translocation  $t(2;16)(q36.3;p13.3)$ . In a metaphase FISH experiment with probe

RT1 the translocation was confirmed; all the signal of this chromosome 16 probe is translocated to the derivative chromosome 2 (not shown). Parental chromosomes were normal.

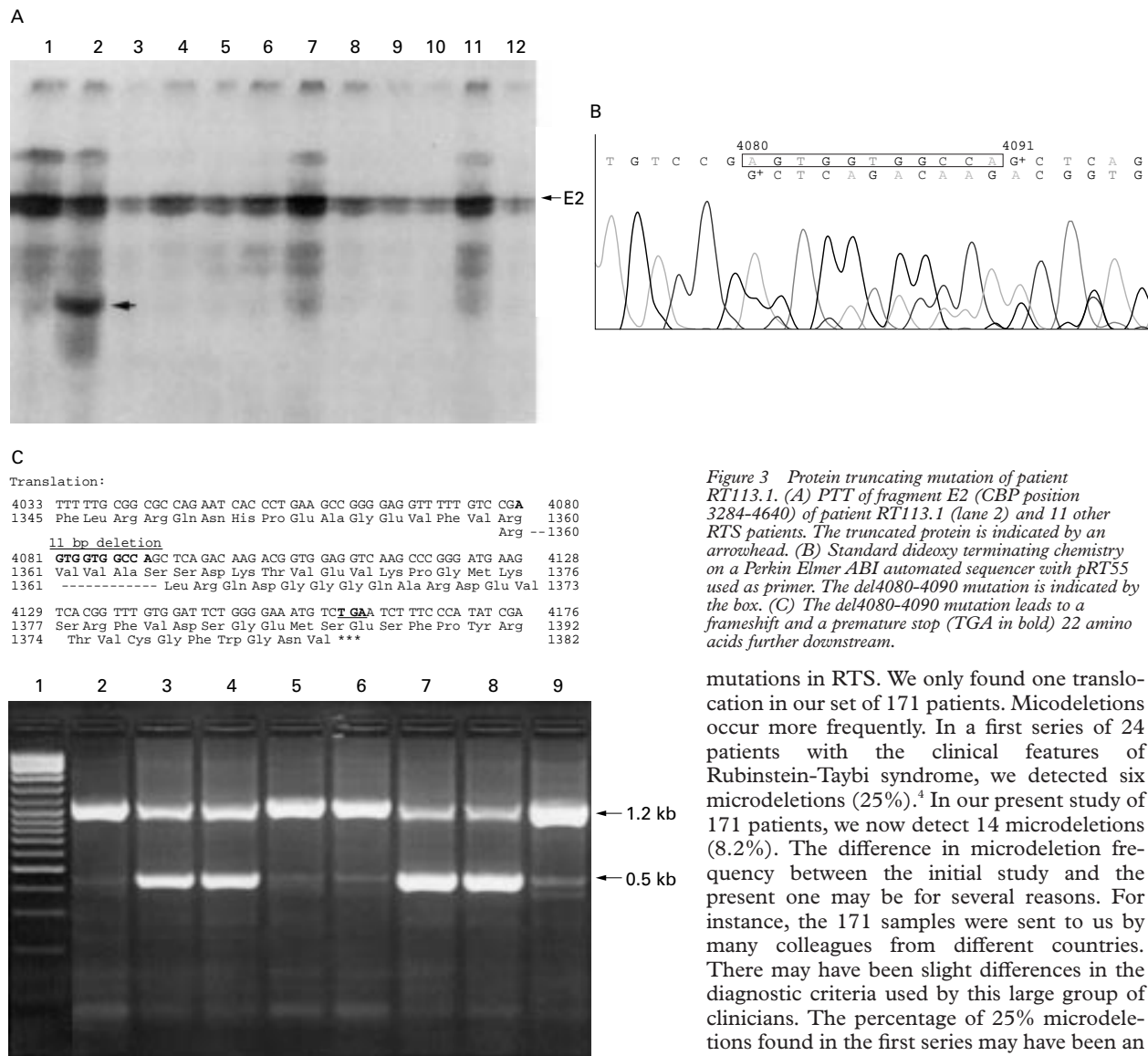
#### MICRODELETION DETECTION BY FISH

Of the 171 patients who were tested for microdeletions, 14 (8.2%) lacked one or more cosmid signals. For 11 patients, sufficient material was available for testing flanking cosmids in order to determine the sizes of their deletions. In addition, four RT1 microdeletion cases reported earlier by Wallerstein *et al.*<sup>10</sup> were analysed for their deletion size. To show deletion size distribution we included six earlier reported cases as well,<sup>5,8</sup> resulting in a total of 21 cases depicted in fig 1B. A total of 17/21 showed at least a RT1/RT100 deletion, which corresponds to the 3' end of the gene. Interestingly, not all deletions could be detected with the RT1/RT100 probe. In the four (4/21) remaining cases, the 3' end of the *CBP* gene was not affected and showed 5' deletions (patients RT-C055, RT196.1, and RT215.1) or interstitial deletions (patient RT-C028) (fig 1B). Microdeletion sizes varied from <50 kb (patient RT-C028) to >650 kb (patient RT2906).

#### CBP TRUNCATION DETECTION BY PTT

To search for truncating mutations we performed the protein truncation test on the entire *CBP* coding region of 37 cases in eight overlapping PTT fragments. Four (4/37) mutations were found. Two had been previously reported<sup>5</sup>; in both cases a codon for glutamine was changed into a stop codon by a C→T substitution. Mutations occurred at base pair positions 406 and 1069, which are positioned in PTT fragment A (fig 2). In a third case, PTT followed by sequence analyses showed a deletion of 11 bp (del4080-4090) leading to a frameshift and a premature stop 22 amino acids further downstream (patient RT113.1/PTT fragment E2). In fig 3 the truncated protein and the sequence analysis is shown. No significant differences were found between the clinical features of these three patients with a truncating mutation and those with a microdeletion.

A fourth aberration was detected on the agarose gel before we performed in vitro transcription/translation. In this case the PCR product of fragment A (with primers in exons 1 and 4) showed a very faint 1.2 kb normal product and an abundant aberrant fragment of 0.5 kb (fig 4, lanes 7 and 8). Sequencing of this RT-PCR product showed a 713 bp deletion in the mRNA which starts at nucleotide position 86 and ends at nucleotide position 798, resulting in a frameshift and translational stop 13 amino acids further downstream. The cDNA deletion exactly corresponds to the second exon of *CBP*<sup>14</sup> (fig 1A). Because the patient's mother was also suspected of having RTS, we performed RT-PCR on her DNA as well. The mother showed similar results to her son, although the intensity ratio between the two bands was approximately equal (fig 4, lanes 3 and 4). Surprisingly, the 0.5 kb PCR product



**Figure 4** RT-PCR analysis of a two generation RTS case. pRT7 and pRT26 RT-PCR products (CBP position -15-1126) electrophoresed on an ethidium bromide stained agarose gel. Lane 1, 100 bp marker; lane 2, one sample of a control; lanes 3 and 4, two samples of the mother; lanes 5 and 6, two samples of the father; lanes 7 and 8, two samples of the child with RTS; lane 9, one sample of the healthy brother. The second sample of the mother, father, and child were obtained by separate mRNA isolations. The normal product is 1.2 kb in size; the alternatively spliced product is 0.5 kb.

can also be seen in the father and other controls (n=40), but is markedly less pronounced (fig 4, lanes 2, 5, 6, and 9). We isolated the 0.5 kb fragment of the father and sequence analysis confirmed that this product also lacks exon 2. These results suggest an error in splicing. Sequence analysis of the splice site and the concomitant branch site, however, did not show any changes. By Southern analysis with several restriction enzymes (see Methods) we could not detect any large deletions at the DNA level (not shown).

### Discussion

Adding the data presented here to those previously reported, we can conclude that translocations and inversions form the minority of CBP

**Figure 3** Protein truncating mutation of patient RT113.1. (A) PTT of fragment E2 (CBP position 3284-4640) of patient RT113.1 (lane 2) and 11 other RTS patients. The truncated protein is indicated by an arrowhead. (B) Standard dideoxy terminating chemistry on a Perkin Elmer ABI automated sequencer with pRT55 used as primer. The del4080-4090 mutation is indicated by the box. (C) The del4080-4090 mutation leads to a frameshift and a premature stop (TGA in bold) 22 amino acids further downstream.

mutations in RTS. We only found one translocation in our set of 171 patients. Microdeletions occur more frequently. In a first series of 24 patients with the clinical features of Rubinstein-Taybi syndrome, we detected six microdeletions (25%).<sup>4</sup> In our present study of 171 patients, we now detect 14 microdeletions (8.2%). The difference in microdeletion frequency between the initial study and the present one may be for several reasons. For instance, the 171 samples were sent to us by many colleagues from different countries. There may have been slight differences in the diagnostic criteria used by this large group of clinicians. The percentage of 25% microdeletions found in the first series may have been an overestimation owing to small numbers. The true 16p microdeletion frequency in RTS appears to be around 10%.

As seen in fig 1B, all microdeletions cause a complete or partial deletion of the CBP gene. Partial deletions of both the 3' and the 5' end of the gene have been identified. Because many of the microdeletion cases were initially investigated for the presence of RT1/RT100 signal, data bias could occur. In order to exclude a 3' selection bias, 89 of our 171 patients were tested for microdeletions with all five cosmids simultaneously. In this subset, 8/89 (9.0%) microdeletions were found. Four of these eight (50%) were not deleted for RT1/RT100 and would therefore have been missed using standard RT1/RT100 screening methods. These data stress the importance of using all five cosmids covering the entire CBP gene to detect all microdeletions in patients with a clinical picture of RTS.

No other genes besides CBP have been mapped to the area shown in fig 1B. At the 5' side of CBP none of the 18 tested microdeletions extended beyond RT176 (three cases were excluded because they could not be tested



in this region). This would imply that other known centromeric genes such as phosphomannomutase 2 (*PMM2*) (MIM 601785), involved in carbohydrate deficient glycoprotein syndrome type I (CDG1) (MIM 212065),<sup>22</sup> are not deleted in these RTS microdeletions. On the 3' side, however, some of the microdeletions extend towards the chromosomal region which is known to contain the gene for familial Mediterranean fever (*MEFV*) (MIM 249100).<sup>14 23</sup> Because *MEFV* is an autosomal recessive disease, we do not expect symptoms in RTS patients that potentially have deletions within the *MEFV* gene area. If, however, the deletions extend into the *PKD1* and *TSC2* genes, cysts in the kidneys and stigmata of tuberous sclerosis could be expected. These features have not been described in RTS patients. Since deletions spanning this entire region have not been reported in any subject, with the exception of a ring(16) chromosome, which was later found to harbour the relevant part of 16p on the short arm of chromosome 1, it was postulated earlier that the region between *CBP* and *PKD1* may contain one or more genes of which a diploid dose is essential for survival.<sup>4</sup>

The fact that *CBP* is prone to translocations, inversions, and deletions suggests the presence of elements conferring genomic instability. As would be expected in such a case, rearrangements affecting the *CBP* gene are not evenly distributed. In fact, six out of seven studied RTS translocations exhibit breakpoints within the same 13 kb breakpoint region of intron 2,<sup>14</sup> as well as six of the microdeletion breakpoints depicted in fig 1B. The breakpoints of the AML associated somatic translocation t(8;16)(p11;p13.3) map to the same area.<sup>13 14</sup> Interestingly, the 13 kb breakpoint interval contains a 5 kb region that has proven unclonable in multiple attempts made by several groups to date.<sup>12 14</sup> Sequencing this breakpoint cluster region will hopefully lead to an explanation for the instability of this region.

To examine more subtle mutations at the transcript level we turned to the PTT. In a previous study we reported protein truncating mutations in two patients by using the PTT on the first 1.2 kb of the *CBP* transcript.<sup>5</sup> These early results indicated that PTT could be a quick method to screen for *CBP* mutations in RTS patients. To estimate the number of truncating mutations in a larger series of patients we screened the entire *CBP* transcript in 35 patients. Only two additional mutations were found, adding up to 4/37 (10.8%) truncating mutations found by RT-PCR or PTT or both. This low number of truncating mutations is confirmed by a pilot study, in which we performed single stranded conformation polymorphism analysis (SSCA) of the last *CBP* exon (29% of the transcript) on the DNA of 111 RTS patients (partly overlapping the 194 patients reported here). Three (2.7%) non-sense mutations were found (unpublished data). Taking all our data into account it becomes questionable whether the effort and costs are worth the yield and if the PTT technique is suitable for a regular diagnostic setup

for RTS. If protein truncating mutations could be detected directly on western blots, high costs and tedious multiple PTT tests could be avoided.

If fertility is not impaired one could expect a 50% recurrence risk for any haploinsufficiency disease. Two families have been described in which a mother and child both had RTS.<sup>24 25</sup> In both families, however, the children clearly had more pronounced dysmorphic features and were mentally more retarded than their mother. RTS diagnosis in the mothers would have been difficult without the more pronounced phenotype of their children. Parents of RTS children should always be evaluated carefully. These two cases and the one we present in this paper illustrate once more the variability of the syndrome. Recent mouse *Cbp/p300* knock out experiments indeed show that the genetic background is a major feature in phenotype and survival.<sup>26 27</sup> In the mother and child presented here, we could not determine the exact genomic mutational mechanism. At the RT-PCR level, the mother and child both show alternative splicing of *Cbp*. The fact that RNA of lymphoblastoid cells of normal subjects show similar alternatively spliced products (but in a much lower dose) and no genomic deletions could be detected in the mother and child indicate that a mutation could be present in one of the splice regulatory mechanisms. However, mutations in the branch site or the splice acceptor site of the skipped second exon were excluded by sequence analysis. Alternatively, post-transcriptional processing can also be influenced by intronic repeats,<sup>28</sup> silent exonic sequence variation,<sup>29 30</sup> and other unknown mechanisms. The *CBP* introns 1 and 2 and exon 2 should be analysed to determine any sequence variance in this two generation case as compared to a series of controls. Introns 1 and 2 are respectively 28.8 kb and ~33.3 kb in size and include the unstable region (fig 1A), which makes analysis of the flanking introns difficult. Whether the 43 amino acid protein product of the alternatively spliced *CBP* is stable and whether it has any function is unclear at this moment. The first 102 amino acids of *CBP* contain a nuclear hormone receptor interacting domain.<sup>31 32</sup> Thus the alternative product may still bind the nuclear hormone receptors resulting in a dominant negative effect.

The fact that we only found ~20% *CBP* mutations (either by karyotyping and FISH or by PTT) in a large set of RTS patients and that RTS is a syndrome with a highly variable phenotype suggests that not only loss of one functional copy of *CBP* but also that mutations in other genes could play a role in the aetiology of RTS. Other mutational mechanisms could include *CBP* promoter (or other regulatory element) mutations, *CBP* missense mutations (71% of the gene still has to be investigated), intronic mutations within the uncloned 5 kb area that affect transcription, silent mutations in exons, or homologous intrachromosomal recombination between repeated sequences such as seen in haemophilia A (MIM

306700).<sup>33</sup> Other genes involved could be *CBP* homologues, such as the closely related *p300* on chromosome band 22q13<sup>34-35</sup> or genes that encode proteins that participate in the different signalling pathways in which *CBP* is involved. From mouse knock out experiments it is known that losing one allele of *p300* or *Cbp* leads to major health problems.<sup>26-27-36</sup> Heterozygous *Cbp* animals show skull and rib cage deformities, and heterozygous mutants for either *cbp* or *p300* have a higher chance of dying during pregnancy (up to 50% depending on the background). Losing two alleles of either *cbp* or *p300* leads to intrauterine death. Interestingly, the compound heterozygous mouse (*Cbp* +/-, *p300* +/-) exhibits the same phenotype as either the *cbp* or *p300* homozygous mutant mice.<sup>27</sup> One could postulate a "triploinsufficiency model" in which losing one of the four *CBP/p300* alleles leads to major health problems and losing two alleles leads to early death. However, in contrast to *cbp* hemizygous mice, *p300* hemizygotes do not show RTS-like features. This makes *p300* less appropriate as a candidate gene for RTS. Furthermore, no RTS patients have been described with translocations or inversions involving chromosome band 22q13.

Further insights into how mutations in *CBP* could lead to the RTS phenotype might come from other malformation syndromes, especially Greig's cephalosyndactyly syndrome and Saethre-Chotzen syndrome. Greig's syndrome, which is similar to RTS in limb and craniofacial dysmorphisms but does not include mental retardation, is caused by mutations in the *Gli3* gene.<sup>37</sup> *Gli3* is highly homologous to the *Drosophila* gene *Cubitus interruptus (CI)*, a transcription factor in the Hedgehog signalling pathway and a member of the Gli signalling pathway. In studies using mutated *Drosophila CBP (dCBP)*, it was determined that *dCBP* functions as a cofactor for *CI*.<sup>38</sup> The similarity between Saethre-Chotzen syndrome and RTS is even more striking, illustrated by the publication of Lowry *et al*<sup>39</sup> in which a Saethre-Chotzen patient appeared to have been incorrectly diagnosed with RTS. Saethre-Chotzen syndrome is caused by haploinsufficiency of the human *TWIST* gene product.<sup>40</sup> The previously mentioned *dCBP* mutants were observed to affect the *Dorsal* dependent expression of the *Twist* gene.<sup>41</sup> Because the *Dorsal* protein recruits *dCBP* to initiate transcription of *Twist*, it seems likely that haploinsufficiency of *CBP* could influence the expression of *Twist*. Low expression of the *Twist* protein, either by mutations in *Twist* itself or by low levels of a cofactor involved in its expression (such as *Dorsal*), could lead to the clinical overlap between Saethre-Chotzen and Rubinstein-Taybi syndromes. Moreover, *Twist* was recently shown to bind to the HAT domain of *p300* itself and thereby directly regulates its HAT activity.<sup>42</sup>

Microdeletions of and truncating mutations in *CBP* account for ~20% of the mutations in RTS. *CBP* interacts with multiple proteins and participates in several signalling pathways. The

remaining mutations responsible for RTS could therefore be hidden in a large number of genes.

The authors wish to thank Annemieke Rus, Sander Kneppers, and Norman Doggett for their technical assistance or sharing unpublished data. This work was supported by the Dutch Cancer Society (IKW92-24), the Dutch Organization for Scientific Research (NWO 901-04-124), and grants from the European Community (CT93-0040). Accession numbers and URLs for data in this article are as follows: Genome Technology Centre (GTC) - Leiden, <http://ruly70.medfac.leidenuniv.nl/~gtc/vecprobe.html#RT> (for cosmid probes made available at cost price); Online Mendelian Inheritance in Man (OMIM), <http://www.ncbi.nlm.nih.gov/Omim> (for MM numbers); GenBank, <http://www.ncbi.nlm.nih.gov/Entrez/nucleotide.html> (for nucleotide sequences).

- Rubinstein JH, Taybi H. Broad thumbs and toes and facial abnormalities. *Am J Dis Child* 1963;105:588-608.
- Imaizumi K, Kuroki Y, Rubinstein-Taybi syndrome with de novo reciprocal translocation t(2;16)(p13.3;p13.3). *Am J Med Genet* 1991;38:636-9.
- Tommerup N, van der Hagen CB, Heiberg A. Tentative assignment of a locus for Rubinstein-Taybi syndrome to 16p13.3 by a de novo reciprocal translocation, t(7;16)(q34;p13.3). *Am J Med Genet* 1992;44:237-41.
- Breuning MH, Dauwerse JG, Fugazza G, *et al*. Rubinstein-Taybi syndrome caused by submicroscopic deletions within 16p13.3. *Am J Hum Genet* 1993;52:249-54.
- Petrij F, Giles RH, Dauwerse JG, *et al*. Rubinstein-Taybi syndrome is caused by mutations in the transcriptional co-activator *CBP*. *Nature* 1995;376:348-51.
- Chrivia JC, Kwok RPS, Lamb N, Haglwar M, Montimny MR, Goodman RH. Phosphorylated CREB binds specifically to the nuclear protein *CBP*. *Nature* 1993;365:855-9.
- Giles RH, Peters DJM, Breuning MH. Conjunction dysfunction: *CBP/p300* in human disease. *Trends Genet* 1998;14:178-83.
- Masuno M, Imaizumi K, Kurosawa K, *et al*. Submicroscopic deletion of chromosome region 16p13.3 in a Japanese patient with Rubinstein-Taybi syndrome. *Am J Med Genet* 1994;53:352-4.
- McGaughan JM, Gaunt L, Dore J, Petrij F, Dauwerse HG, Donnai D. Rubinstein-Taybi syndrome with deletions of FISH probe RT1 at 16p13.3: two UK patients. *J Med Genet* 1996;33:82-3.
- Wallerstein R, Anderson CE, Hay B, *et al*. Submicroscopic deletions at 16p13.3 in Rubinstein-Taybi syndrome: frequency and clinical manifestations in North American population. *J Med Genet* 1997;34:203-6.
- Taine L, Goizet C, Wen ZQ, *et al*. Submicroscopic deletion of chromosome 16p13.3 in patients with Rubinstein-Taybi syndrome. *Am J Med Genet* 1998;78:267-70.
- Borrow J, Stanton VP Jr, Andresen JM, *et al*. The translocation t(8;16)(p11;p13) of acute myeloid leukemia fuses a putative acetyl transferase to the CREB-binding protein. *Nat Genet* 1996;14:33-41.
- Giles RH, Dauwerse HG, Higgins C, *et al*. Detection of *CBP* rearrangements in acute myelogenous leukemia with t(8;16). *Leukemia* 1997;11:2087-96.
- Giles RH, Petrij F, Dauwerse HG, *et al*. Construction of a 1.2 Mb contig surrounding, and molecular analysis of, the human CREB-binding protein (*CBP/CREBBP*) gene on chromosome 16p13.3. *Genomics* 1997;42:96-114.
- Roest PA, Roberts RG, Sugino S, van Ommen GJB, den Dunnen JT. Protein truncation test (PTT) for rapid detection of translation-terminating mutations. *Hum Mol Genet* 1993;2:1719-21.
- Hennekam RCM, van den Boogaard MJ, Sibbles BJ, van Spijker HG. Rubinstein-Taybi syndrome in the Netherlands. *Am J Med Genet* 1990;suppl 6:17-29.
- Petrij F, Giles RH, Breuning MH, Hennekam RCM. Rubinstein-Taybi syndrome. In: Scriver C, *et al*, eds *The metabolic and molecular basis of inherited disease*. 8th ed. New York: Wiley-Liss (in press).
- Blough RI, Petrij F, Dauwerse JG, *et al*. Variation in microdeletions of the *CBP* gene at chromosome band 16p13.3 in the Rubinstein-Taybi syndrome. *Am J Med Genet* 2000;90:29-34.
- Kievits T, Dauwerse JG, Wiegant J, *et al*. Rapid subchromosomal localization of cosmids by non-radioactive in situ hybridization. *Cytogenet Cell Genet* 1990;53:134-6.
- Driesen MS, Dauwerse JG, Wapenaar MC, *et al*. Generation and fluorescent in situ hybridization mapping of yeast artificial chromosomes of 1p, 17p, 17q, and 19q from a hybrid cell line by high-density screening of an amplified library. *Genomics* 1991;11:1079-87.
- Dauwerse JG, Jumelet EA, Wessels JW, *et al*. Extensive cross-homology between the long and the short arm of chromosome 16 may explain leukemic inversions and translocations. *Blood* 1992;79:1299-304.
- Matthijs G, Schollen E, Pardon E, *et al*. Mutations in *PMM2*, a phosphomannomutase gene on chromosome 16p13, in carbohydrate-deficient glycoprotein type I syndrome (Jaeken syndrome). *Nat Genet* 1997;16:88-92.
- International FMF Consortium. Ancient missense mutations in a new member of the RoRet gene family are likely to cause familial Mediterranean fever. *Cell* 1997;90:797-807.

- 24 Hennekam RCM, Lommen EJP, Strengers JCM, van Spijker HG, Jansen-Kokx TMG. Rubinstein-Taybi syndrome in a mother and son. *Eur J Pediatr* 1989;148:439-41.
- 25 Marion RW, Garcia DM, Karasik JB. Apparent dominant transmission of the Rubinstein-Taybi syndrome. *Am J Med Genet* 1993;46:284-7.
- 26 Tanaka Y, Naruse I, Maekawa T, Masuya H, Shiroishi T, Ishii S. Abnormal skeletal patterning in embryos lacking a single Cbp allele: a partial similarity with Rubinstein-Taybi syndrome. *Proc Natl Acad Sci USA* 1997;94:10215-20.
- 27 Yao TP, Oh SP, Fuchs M, et al. Gene dosage-dependent embryonic development and proliferation defects in mice lacking the transcriptional integrator p300. *Cell* 1998;93:361-72.
- 28 Chu CS, Trapnell BC, Curristin S, Cutting GR, Crystal RG. Genetic basis of variable exon 9 skipping in cystic fibrosis transmembrane conductance regulator mRNA. *Nat Genet* 1993;3:151-6.
- 29 Liu W, Qian C, Francke U. Silent mutation induces exon skipping of fibrillin-1 gene in Marfan syndrome. *Nat Genet* 1997;16:328-9.
- 30 Teraoka SN, Telatar M, Becker-Catania S, et al. Splicing defects in the ataxia-telangiectasia gene, ATM: underlying mutations and consequences. *Am J Hum Genet* 1999;64:1617-31.
- 31 Kamei Y, Xu L, Heinzl T, et al. A CBP integrator complex mediates transcriptional activation and AP-1 inhibition by nuclear receptors. *Cell* 1996;85:403-14.
- 32 Chakravarti D, LaMorte VJ, Nelson MC, et al. Role of CBP/p300 in nuclear receptor signalling. *Nature* 1996;383:99-103.
- 33 Lakich D, Kazazian HH Jr, Antonarakis SE, Gitschier J. Inversions disrupting the factor VIII gene are a common cause of severe haemophilia A. *Nat Genet* 1993;5:236-41.
- 34 Eckner R, Ewen ME, Newsome D, et al. Molecular cloning and functional analysis of the adenovirus E1A-associated 300-kD protein (p300) reveals a protein with properties of a transcriptional adaptor. *Genes Dev* 1994;8:869-84.
- 35 Lundblad JR, Kwok RPS, Lurance ME, Harter ML, Goodman RH. Adenoviral E1A-associated protein p300 as a functional homologue of the transcriptional co-activator CBP. *Nature* 1995;374:85-8.
- 36 Giles RH. CBP/p300 transgenic mice. *Trends Genet* 1998;14:214.
- 37 Vortkamp A, Gessler M, Grzeschik KH. GLI3 zinc-finger gene interrupted by translocations in Greig syndrome families. *Nature* 1991;352:539-40.
- 38 Akimaru H, Chen Y, Dai P, et al. Drosophila CBP is a co-activator of cubitus interruptus in hedgehog signalling. *Nature* 1997;386:735-8.
- 39 Lowry RB. Overlap between Rubinstein-Taybi and Saethre-Chotzen syndromes: a case report. *Am J Med Genet* 1990;suppl 6:73-6.
- 40 Howard TD, Paznekas WA, Green ED, et al. Mutations in TWIST, a basic helix-loop-helix transcription factor, in Saethre-Chotzen syndrome. *Nat Genet* 1997;15:36-41.
- 41 Akimaru H, Hou DX, Ishii S. Drosophila CBP is required for dorsal-dependent twist gene expression. *Nat Genet* 1997;17:211-14.
- 42 Hamamori Y, Sartorelli V, Ogryzko V, et al. Regulation of histone acetyltransferases p300 and PCAF by the bHLH protein twist and adenoviral oncoprotein E1A. *Cell* 1999;96:405-13.
- 43 Lacombe D, Saura R, Taine L, Battin J. Confirmation of assignment of a locus for Rubinstein-Taybi syndrome gene to 16p13.3. *Am J Med Genet* 1992;44:126-8.