



## UvA-DARE (Digital Academic Repository)

### Deep radio imaging of 47 Tuc identifies the peculiar X-ray source X9 as a new black hole candidate

Miller-Jones, J.C.A.; Strader, J.; Heinke, C.O.; Maccarone, T.J.; van den Berg, M.; Knigge, C.; Chomiuk, L.; Noyola, E.; Russell, T.D.; Seth, A.C.; Sivakoff, G.R.

**DOI**

[10.1093/mnras/stv1869](https://doi.org/10.1093/mnras/stv1869)

**Publication date**

2015

**Document Version**

Final published version

**Published in**

Monthly Notices of the Royal Astronomical Society

[Link to publication](#)

**Citation for published version (APA):**

Miller-Jones, J. C. A., Strader, J., Heinke, C. O., Maccarone, T. J., van den Berg, M., Knigge, C., Chomiuk, L., Noyola, E., Russell, T. D., Seth, A. C., & Sivakoff, G. R. (2015). Deep radio imaging of 47 Tuc identifies the peculiar X-ray source X9 as a new black hole candidate. *Monthly Notices of the Royal Astronomical Society*, 453(4), 3918-3931. <https://doi.org/10.1093/mnras/stv1869>

**General rights**

It is not permitted to download or to forward/distribute the text or part of it without the consent of the author(s) and/or copyright holder(s), other than for strictly personal, individual use, unless the work is under an open content license (like Creative Commons).

**Disclaimer/Complaints regulations**

If you believe that digital publication of certain material infringes any of your rights or (privacy) interests, please let the Library know, stating your reasons. In case of a legitimate complaint, the Library will make the material inaccessible and/or remove it from the website. Please Ask the Library: <https://uba.uva.nl/en/contact>, or a letter to: Library of the University of Amsterdam, Secretariat, Singel 425, 1012 WP Amsterdam, The Netherlands. You will be contacted as soon as possible.

*UvA-DARE is a service provided by the library of the University of Amsterdam (<https://dare.uva.nl>)*

# Deep radio imaging of 47 Tuc identifies the peculiar X-ray source X9 as a new black hole candidate

J. C. A. Miller-Jones,<sup>1</sup>★ J. Strader,<sup>2</sup> C. O. Heinke,<sup>3,4</sup> T. J. Maccarone,<sup>5</sup>  
M. van den Berg,<sup>6,7</sup> C. Knigge,<sup>8</sup> L. Chomiuk,<sup>2</sup> E. Noyola,<sup>9</sup> T. D. Russell,<sup>1</sup>  
A. C. Seth<sup>10</sup> and G. R. Sivakoff<sup>3</sup>

<sup>1</sup>International Centre for Radio Astronomy Research - Curtin University, GPO Box U1987, Perth, WA 6845, Australia

<sup>2</sup>Department of Physics and Astronomy, Michigan State University, East Lansing, MI 48824, USA

<sup>3</sup>Department of Physics, University of Alberta, Room 238 CEB, Edmonton, AB T6G 2G7, Canada

<sup>4</sup>Alexander von Humboldt Fellow, at Max-Planck-Institut für Radioastronomie, Auf dem Hügel 69, D-53121 Bonn, Germany

<sup>5</sup>Department of Physics, Texas Tech University, Box 41051, Lubbock, TX 79409-1051, USA

<sup>6</sup>Anton Pannekoek Institute for Astronomy, University of Amsterdam, Science Park 904, NL-1098 XH Amsterdam, the Netherlands

<sup>7</sup>Harvard-Smithsonian Center for Astrophysics, 60 Garden Street, Cambridge, MA 02138, USA

<sup>8</sup>Physics and Astronomy, University of Southampton, Highfield, Southampton SO17 1BJ, UK

<sup>9</sup>McDonald Observatory, The University of Texas at Austin, 2515 Speedway, Stop C1402, Austin, TX 78712-1206, USA

<sup>10</sup>Department of Physics and Astronomy, University of Utah, 115 South 1400 East, Salt Lake City, UT 84112, USA

Accepted 2015 August 11. Received 2015 August 11; in original form 2015 May 8

## ABSTRACT

We report the detection of steady radio emission from the known X-ray source X9 in the globular cluster 47 Tuc. With a double-peaked C IV emission line in its ultraviolet spectrum providing a clear signature of accretion, this source had been previously classified as a cataclysmic variable. In deep ATCA (Australia Telescope Compact Array) imaging from 2010 and 2013, we identified a steady radio source at both 5.5 and 9.0 GHz, with a radio spectral index (defined as  $S_\nu \propto \nu^\alpha$ ) of  $\alpha = -0.4 \pm 0.4$ . Our measured flux density of  $42 \pm 4 \mu\text{Jy beam}^{-1}$  at 5.5 GHz implies a radio luminosity ( $\nu L_\nu$ ) of  $5.8 \times 10^{27} \text{ erg s}^{-1}$ , significantly higher than any previous radio detection of an accreting white dwarf. Transitional millisecond pulsars, which have the highest radio-to-X-ray flux ratios among accreting neutron stars (still a factor of a few below accreting black holes at the same  $L_X$ ), show distinctly different patterns of X-ray and radio variability than X9. When combined with archival X-ray measurements, our radio detection places 47 Tuc X9 very close to the radio/X-ray correlation for accreting black holes, and we explore the possibility that this source is instead a quiescent stellar-mass black hole X-ray binary. The nature of the donor star is uncertain; although the luminosity of the optical counterpart is consistent with a low-mass main-sequence donor star, the mass transfer rate required to produce the high quiescent X-ray luminosity of  $10^{33} \text{ erg s}^{-1}$  suggests the system may instead be ultracompact, with an orbital period of order 25 min. This is the fourth quiescent black hole candidate discovered to date in a Galactic globular cluster, and the only one with a confirmed accretion signature from its optical/ultraviolet spectrum.

**Key words:** stars: black holes – globular clusters: individual: 47 Tuc – radio continuum: general – X-rays: binaries.

## 1 INTRODUCTION

Globular clusters (GCs) are extremely efficient at producing low-mass X-ray binaries (LMXBs), with a specific frequency over two orders of magnitude higher than that seen in the field (Clark 1975). Although Galactic GCs comprise less than  $10^{-3}$  of the to-

tal mass of the Galaxy (Harris, Harris & Alessi 2013; Licquia & Newman 2015), they contain roughly 10 per cent of the LMXBs (Benacquista & Downing 2013). The high stellar densities of GCs imply additional formation pathways for LMXBs, via tidal capture and three-body exchange interactions. However, while 18 dynamically confirmed black holes (BHs) have been identified among the  $\sim 200$  known LMXBs in our Galaxy (see McClintock & Remillard 2006, for a review), none of these are in GCs. Either BHs

\* E-mail: james.miller-jones@curtin.edu.au

are rare in GCs, or selection effects have to date prevented their detection.

### 1.1 Stellar-mass black holes in globular clusters

The most massive stars in a newly formed GC should collapse into BHs within the first few Myr, and it was originally thought that following mass segregation (Spitzer 1969), mutual gravitational interactions would lead to the expulsion of almost all of these BHs (Kulkarni, Hut & McMillan 1993; Sigurdsson & Hernquist 1993; Portegies Zwart & McMillan 2000). However, recent detections of variable X-ray sources in extragalactic GCs with luminosities in excess of  $10^{39}$  erg s<sup>-1</sup> (e.g. Maccarone et al. 2007, 2011; Shih et al. 2010; Brassington et al. 2012; Roberts et al. 2012, and references therein) have suggested that BHs can in fact survive in GCs. Closer to home, Barnard et al. (2014) have recently used X-ray spectral fitting to identify several BH candidates in GCs in M31.

The implied survival of GC BHs has also received theoretical support (e.g. Mackey et al. 2008), with recent simulations showing that GCs could in fact retain a significant population of BHs (Morscher et al. 2013; Sippel & Hurley 2013). However, this population of predicted BHs is sensitive to the magnitude of the natal kicks received by the BHs at formation. Assuming that they are not ejected at formation, the BHs will rapidly segregate to the cluster centre, and the exchange of energy between the BH subcluster and the rest of the stars in the cluster allows a significant fraction of the BHs to be retained up to the present day. Morscher et al. (2015) performed a set of detailed Monte Carlo simulations, finding that a small fraction (~1 per cent) of the most massive BHs form a subcluster that undergoes a series of core oscillations, forming a steep cusp and ejecting the most massive single or binary BHs before re-expanding due to the interactions of three-body binaries with other objects. The rest of the (lower-mass BHs) remain permanently well mixed with the cluster stars. Depending on initial cluster parameters, up to  $10^3$  BHs can remain after a Hubble time. However, once the BH population has been sufficiently depleted the BHs cannot provide sufficient energy to the rest of the cluster, which then enters a phase of ‘core collapse’ (defined observationally via a steep radial density profile in the central regions), leading to the rapid ejection of the remaining BHs (Breen & Heggie 2013; Heggie & Giersz 2014). This would imply that clusters that have not yet undergone this phase of observational core collapse should be the best candidates to host BHs.

Although 18 LMXBs in GCs have been identified either as persistent sources or during transient outbursts (e.g. Bahramian et al. 2014), sensitive X-ray observations have enabled the detection of dozens of candidate neutron star (NS) LMXBs in quiescence, identified by their soft thermal surface emission (e.g. Rutledge et al. 2002; Heinke et al. 2003; Guillot et al. 2009), enabling the inference that there are of order 10–20 quiescent LMXBs for each LMXB seen in outburst, and thus  $\gtrsim 200$  quiescent NS LMXBs in GCs (Heinke, Grindlay & Edmonds 2005a). Identifying quiescent BH LMXBs in GCs is harder, since they do not produce a distinctive X-ray signature such as the thermal surface emission from quiescent NS LMXBs. However, accreting BHs do emit compact, partially self-absorbed radio jets in the hard and quiescent states (e.g. Gallo, Fender & Hynes 2005), with significantly higher radio luminosities than NS systems with the same X-ray luminosity (Migliari & Fender 2006). Since the recent bandwidth upgrades to the Very Large Array and the Australia Telescope Compact Array (ATCA) have now rendered this faint radio emission accessible over a significant fraction of the Galaxy, we can effectively search for

BHs using deep radio continuum observations of GCs (Maccarone 2004, 2005). The radio emission should be unresolved, with a flat or slightly inverted spectrum (i.e.  $\alpha \gtrsim 0$ , where we use the convention that flux density  $S_\nu$  scales with frequency  $\nu$  as  $S_\nu \propto \nu^\alpha$ ). The inferred radio luminosity should also fall on or within the scatter of the well-established correlation between X-ray and radio luminosities for hard state and quiescent accreting BHs (Hannikainen et al. 1998; Corbel et al. 2003; Gallo, Fender & Pooley 2003). The form of this correlation at the lowest luminosities remains relatively poorly constrained (Gallo et al. 2006), with recent evidence suggesting more scatter about the correlation than had previously been assumed (Gallo et al. 2014). However, in the absence of a dynamical mass, the presence of faint, flat-spectrum radio emission is still the best way to discriminate between an accreting BH and an analogous NS or white dwarf system. As originally suggested by Maccarone & Knigge (2007), this technique has recently been used to great effect, discovering two BH candidates in the core of M22 (Strader et al. 2012a) and a third candidate in M62 (Chomiuk et al. 2013). While follow-up observations to confirm the nature of these three flat-spectrum radio sources are ongoing, we have continued to obtain deep radio images of GCs to search for further BH candidates.

### 1.2 47 Tucanae

The dense, massive ( $6.5 \times 10^5 M_\odot$ ; Kimmig et al. 2015) GC 47 Tuc (NGC 104) lies at a distance of  $d = 4.57 \pm 0.06$  kpc (taking the average of multiple previous distance measurements and the standard error on the mean; Woodley et al. 2012). Owing to its proximity and low extinction ( $E(B - V) = 0.04 \pm 0.02$ ; Salaris et al. 2007), the cluster has been very well studied, and is rich in exotic binary systems. 47 Tuc contains 300 known X-ray sources, including five quiescent NS LMXBs (Heinke et al. 2005b) and 23 radio millisecond pulsars (Camilo et al. 2000; Freire et al. 2003), which are likely LMXB descendants. Since conditions in the cluster are clearly favourable for forming LMXBs, this makes it an ideal target for deep radio observations to search for quiescent accreting BHs. Furthermore, Giersz & Heggie (2011) recently performed detailed simulations of 47 Tuc, finding that it has not yet undergone core collapse (which will take another ~20 Gyr) and so should still retain a small population of BHs. This is in stark contrast to clusters such as M4 and NGC 6397 that have already undergone their ‘second core collapse’ phase and would no longer be expected to host a significant BH population (see fig. 1 of Heggie & Giersz 2014).

The first sensitive radio continuum observations of 47 Tuc were performed by McConnell & Ables (2000), who used 60 h of ATCA data at 1.4 and 1.7 GHz to reach rms noise levels of 42 and 46  $\mu\text{Jy beam}^{-1}$ , respectively. They detected 11 radio point sources within 5 arcmin of the cluster centre, including five sources later confirmed as millisecond pulsars (MSPs). By extending the on-source integration time to 170 h, McConnell, Deacon & Ables (2001) reached an rms noise level of 18  $\mu\text{Jy beam}^{-1}$ , detecting an additional seven MSPs and three more unidentified sources, which they suggested to be either extragalactic background sources or as yet unidentified MSPs. Within the 24-arcsec core radius (Howell, Guhathakurta & Gilliland 2000), the only detected sources were MSPs F, G/I, L, and O.

Following the recent bandwidth upgrade to the ATCA (Wilson et al. 2011), Lu & Kong (2011) made deep 5.5 and 9.0 GHz observations of 47 Tuc in 2010 January, with a total on-source integration time of 18.3 h, aiming to detect the radiative signature

of a possible intermediate-mass black hole (IMBH) at the cluster centre. After stacking both frequency bands to reach a noise level of  $13.3 \mu\text{Jy beam}^{-1}$ , they detected no source brighter than  $3\sigma$  within the central  $10 \text{ arcsec} \times 10 \text{ arcsec}$  of the cluster, giving a  $3\sigma$  upper limit on the mass of any IMBH of  $520\text{--}4900 M_{\odot}$ . A similar IMBH limit was found by McLaughlin et al. (2006), who used the cluster velocity dispersion profile to place a  $1\sigma$  upper limit of  $1500 M_{\odot}$  on the mass of any IMBH, so the evidence for such an object is not compelling.

In this paper, we combine the archival observations of Lu & Kong (2011) with new ATCA data to make the deepest radio image of 47 Tuc to date. We report the discovery of a flat-spectrum radio source within the cluster core that is an astrometric match to the known bright X-ray source X9 (Hertz & Grindlay 1983; Auriere, Koch-Miramond & Ortolani 1989). In light of its inferred radio luminosity, we suggest that the source is a quiescent BH, rather than a cataclysmic variable (CV), as had been previously inferred (Paresce, de Marchi & Ferraro 1992; Grindlay et al. 2001; Knigge et al. 2008).

In Sections 2 and 3, we describe our radio observations and results. We discuss previous observations of X9 in Section 4, comparing the source properties to those of various classes of accreting compact object. We discuss the possible nature of the system in Section 5, review the sample of GCs hosting BH candidates in Section 6, and present our conclusions in Section 7.

## 2 OBSERVATIONS AND DATA REDUCTION

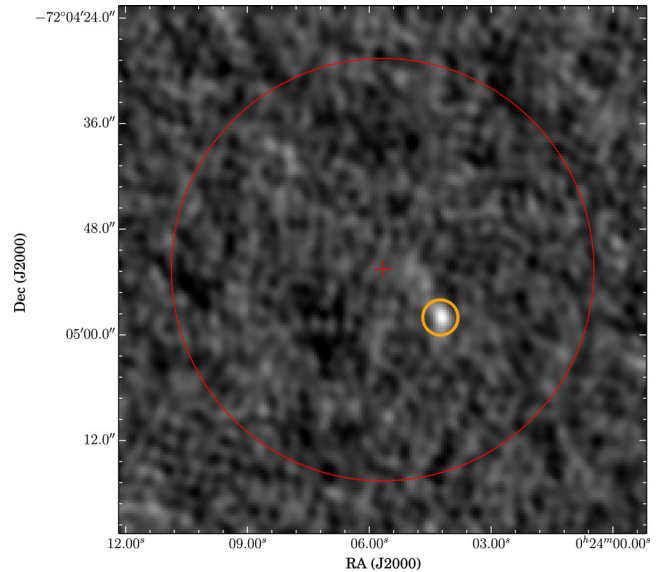
### 2.1 ATCA data

We observed the GC 47 Tuc with the ATCA on 2013 November 12, from 08:06–17:52 UT (MJD  $56608.54 \pm 0.20$ ), achieving an on-source integration time of 8.7 h. Using the Compact Array Broadband Backend, we observed simultaneously in two bands, with central frequencies of 5.5 and 9.0 GHz, each with a bandwidth of 2048 MHz. The array was in its extended 6A configuration, with a maximum baseline of 5.939 km. We used B1934-638 as both a bandpass calibrator and to set the flux density scale, and B2353-686 as the secondary calibrator to set the amplitude and phase gains.

We reduced the data for each frequency band separately, performing external gain calibration in MIRIAD (Sault, Teuben & Wright 1995) using standard procedures. We then frequency-averaged the calibrated data and imported them into the Common Astronomy Software Application (CASA; McMullin et al. 2007) for imaging. Imaging was carried out using Briggs weighting with a robust parameter of 1, which provided a good compromise between sensitivity and resolution, as well as suppressing the sidelobes of the dirty beam. Our final image sensitivities of  $5.7$  and  $6.4 \mu\text{Jy beam}^{-1}$  at 5.5 and 9.0 GHz, respectively, were close to the theoretical thermal noise levels. The final source fluxes and positions were measured in the image plane using the JMFIT algorithm within the Astronomical Image Processing System (AIPS; Greisen 2003).

### 2.2 Archival ATCA data

To improve the significance of our detections, we combined our data with the archival ATCA data taken in the same array configuration by Lu & Kong (2011) on 2010 January 24–25 (summarized briefly in Section 1.2). Our reanalysis of these data allowed us to reduce the noise levels in the 5.5 and 9.0 GHz images to the theoretically expected limits of  $6.7$  and  $9.8 \mu\text{Jy beam}^{-1}$ , respectively. Despite the longer on-source integration times, these observations were less



**Figure 1.** 5.5-GHz ATCA image of the core of 47 Tuc. The red cross denotes the cluster centre, the red circle shows the 24-arcsec core radius, and the thick orange circle highlights our detection of X9.

sensitive than those from 2013 (Section 2.1) because the older data were taken prior to the installation of the new, more sensitive 4 cm receivers at the ATCA.

## 3 RESULTS

After stacking both the new and archival ATCA data in the  $uv$ -plane, our resulting images reached rms noise levels of  $4.4 \mu\text{Jy beam}^{-1}$  at 5.5 GHz and  $5.7 \mu\text{Jy beam}^{-1}$  at 9.0 GHz. The final images at 5.5 and 9.0 GHz had resolutions of  $2.3 \text{ arcsec} \times 1.7 \text{ arcsec}$  in P.A. (position angle)  $18^\circ$ , and  $1.5 \text{ arcsec} \times 11 \text{ arcsec}$  in P.A.  $28^\circ$ , respectively.

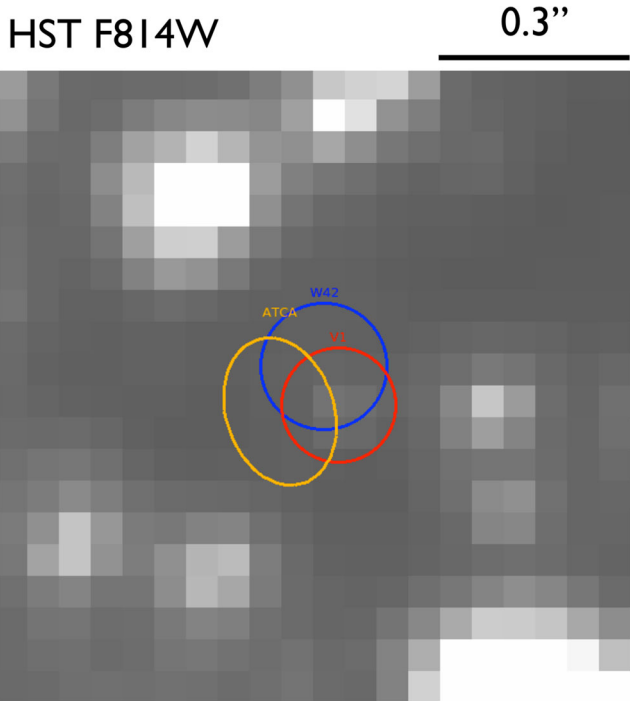
### 3.1 A radio counterpart to X9/W42

The brightest radio source within the 24-arcsec core radius of the cluster at both frequencies (Fig. 1) is coincident with the second brightest hard X-ray source in the cluster (see Fig. 2), denoted as source X9 in the *ROSAT* catalogue of Hasinger, Johnston & Verbunt (1994), and W42 in the *Chandra* catalogues of Grindlay et al. (2001) and Heinke et al. (2005b). We summarize in Table 1 the measured radio brightness of the source in each observation. Using the stacked image, a point source fit to the radio source position in the image plane using the AIPS task JMFIT gave a J2000 position of

$$\text{RA} = 00^{\text{h}}24^{\text{m}}04^{\text{s}}.264 \pm 0^{\text{s}}.016$$

$$\text{Dec.} = -72^{\circ}04^{\text{m}}58^{\text{s}}.09 \pm 0^{\text{s}}.10.$$

Our fitted peak flux densities for X9 in the stacked data were  $42 \pm 4 \mu\text{Jy beam}^{-1}$  at 5.5 GHz and  $35 \pm 6 \mu\text{Jy beam}^{-1}$  at 9.0 GHz. We therefore derive a radio spectral index of  $\alpha = -0.4 \pm 0.4$  and a 5.5-GHz radio luminosity of  $5.8 \times 10^{27} \text{ erg s}^{-1}$ . Here, and throughout this paper, we define radio luminosity by assuming a flat radio spectrum up to the observing frequency (i.e.  $L_r = 4\pi d^2 \nu S_\nu$ , where  $d$  is the source distance,  $\nu$  is the observing frequency, and  $S_\nu$  is the observed flux density). No circular polarization was detected from the source in either of the individual epochs, with the best  $5\sigma$  limit in the stacked data set being  $<22 \mu\text{Jy beam}^{-1}$  ( $<52$  per cent) at 5.5 GHz. We also placed a  $5\sigma$  limit of  $<30 \mu\text{Jy beam}^{-1}$  ( $<71$  per cent) on the 5.5-GHz linear polarization.



**Figure 2.** *HST* F814W image, showing the  $1\sigma$  error ellipses of 47 Tuc X9/W42/V1 in the radio (orange), optical (red) and X-ray (blue) bands. North is up and east is to the left. Uncertainty on the radio position arises purely from the statistical error in fitting the source position. Optical and X-ray error ellipses are dominated by the uncertainty in the absolute astrometry (matching the *HST* reference frame to 2MASS in the optical band, and using the measured positions of X-ray counterparts to known radio MSPs to estimate the uncertainty on the X-ray reference frame). The error ellipses in all three wavebands overlap.

**Table 1.** Measured flux densities of 47 Tuc X9. The source was fit as a point source in the image plane, using the AIPS task JMFIT.

Data set (J2000)	5.5-GHz flux density ( $\mu\text{Jy beam}^{-1}$ )	9.0-GHz flux density ( $\mu\text{Jy beam}^{-1}$ )	Spectral index
2010 January 24–25	$34 \pm 7$	$36 \pm 10$	$0.2 \pm 0.7$
2013 November 12	$50 \pm 6$	$36 \pm 6$	$-0.6 \pm 0.5$
Stacked data	$42 \pm 4$	$35 \pm 6$	$-0.4 \pm 0.4$

To quantify the variability of the radio counterpart to X9, we examined the individual images from the 2010 and 2013 data sets. Point source fits to the position of X9 showed the 9 GHz flux to be constant within uncertainties, while the 5.5 GHz flux increased from  $34 \pm 7$  to  $50 \pm 6 \mu\text{Jy beam}^{-1}$ , implying marginal ( $1.6\sigma$ ) evidence for variability and a slight steepening of the spectrum between the two epochs (see Table 1). We also split the more sensitive 2013 data set into two halves, finding no evidence for significant variability on time-scales of a few hours.

### 3.2 Other radio sources

While X9 was the only source in the cluster core detected at  $>5\sigma$ , there were several other radio sources in the field. We used the AEGEAN source finder (Hancock et al. 2012a,b) to detect and characterize all sources within the half-power response of the primary beam at both frequencies (radii of 4.5 arcmin and 2.7 arcmin at 5.5 and 9.0 GHz, respectively). AEGEAN fits elliptical Gaussian compo-

nents (not constrained to the synthesized beam size, hence not necessarily point sources) to all islands of pixels with a peak exceeding a user-set threshold relative to the local background rms noise level, returning the amplitude of an elliptical Gaussian fit to each component. With over  $10^7$  pixels in our images, we set a detection threshold of  $5.5\sigma$ . Including X9, AEGEAN detected 14 radio sources exceeding this threshold within the central 4.5 arcmin FWHM (full width at half-maximum) of the 5.5 GHz image (Fig. 3). At 9.0 GHz, only three sources (all with 5.5 GHz counterparts) were detected within the 2.7-arcmin diameter FWHM. Details of all detected sources are given in Table 2.

We also examined the positions of the known MSPs in our 5.5 GHz image (identified from the ATNF pulsar catalogue;<sup>1</sup> Manchester et al. 2005), and although none were detected at the  $5.5\sigma$  level (and hence picked up by AEGEAN), seven showed radio emission at  $\gtrsim 3\sigma$  (Table 3). We carried out a point source fit to each, using the JMFIT task within AIPS. For all other MSPs in the cluster, we place a  $3\sigma$  upper limit of  $15 \mu\text{Jy beam}^{-1}$  at 5.5 GHz. No MSPs were detected in the 9.0 GHz image.

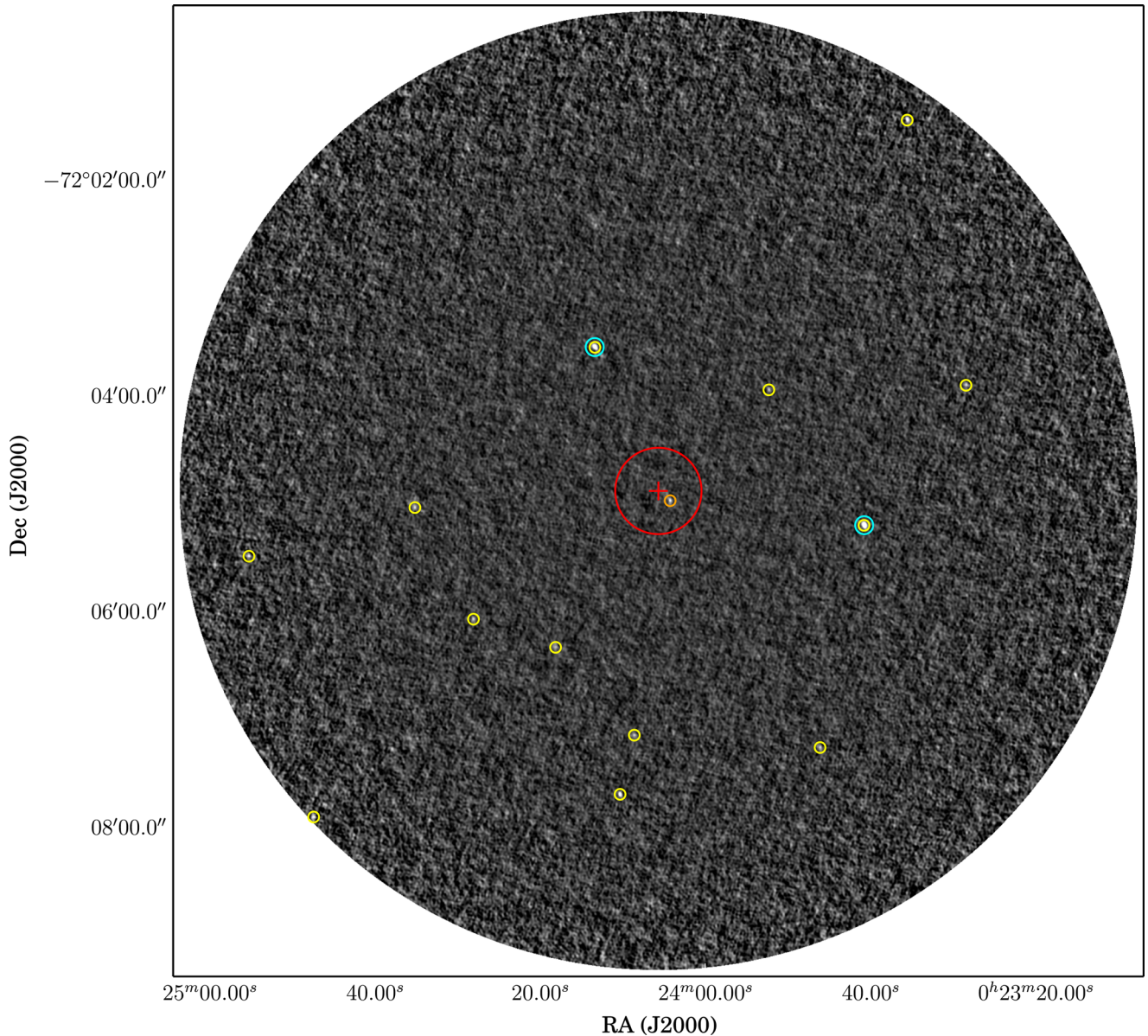
Of the 14 sources detected at 5.5 GHz by AEGEAN, four had an X-ray counterpart in the *Chandra* catalogue of Grindlay et al. (2001). These were W42 (X9), W132, W186, and W231, but only X9 had previously been identified with any particular source class. Given the flat radial distribution of X-ray sources beyond 100 arcsec (where the other three radio sources with X-ray counterparts are located), Heinke et al. (2005b) inferred that such distant sources are likely not associated with the cluster, but are more likely background active galactic nuclei (AGN). Indeed, optical imaging with the *Hubble Space Telescope* (*HST*) shows that W186 and W231 are likely associated with extragalactic sources since they since they lie in a region of extended optical emission (van den Berg et al., in preparation). Although W132 is outside the field of view of that data set, it is a very hard X-ray source (Heinke et al. 2005b), suggestive of a background AGN with intrinsic absorption (Grindlay et al. 2002; Heinke et al. 2005b). Should these identifications as background AGN prove correct, these sources could be used as calibrators to define a stationary reference frame for astrometric studies, allowing an improved distance determination for the cluster.

We compared the positions of these three X-ray sources (W132, W186, and W231) from the *Chandra* catalogue of Heinke et al. (2005b) with those of their ATCA radio counterparts (Table 2), and found that the radio and X-ray frames could be matched to a  $3\sigma$  limit of better than 0.2–0.3 arcsec. A comparison of our radio position for X9 with the X-ray position measured by *Chandra* in 2002 (Heinke et al. 2005b) suggests that the two are offset by  $0.11 \pm 0.11$  arcsec in RA and  $-0.12 \pm 0.17$  arcsec in Dec., i.e. consistent to within  $1\sigma$  (see Fig. 2).

### 4 47 TUC X9

An X-ray source was first detected in the core of 47 Tuc by the *Einstein* satellite, with a variable X-ray luminosity that reached  $\sim 1.0 \times 10^{34} \text{ erg s}^{-1}$  (0.5–10 keV; Hertz & Grindlay 1983; Auriere et al. 1989). A faint, variable, and very blue optical candidate counterpart, denoted V1, was identified by Paresce et al. (1992). *ROSAT* observations resolved the cluster into multiple X-ray sources, of which one, X9, was coincident with V1 (Hasinger et al. 1994; Verbunt & Hasinger 1998). Grindlay et al. (2001) used *Chandra* to confirm the association of this source (which they label

<sup>1</sup> <http://www.atnf.csiro.au/research/pulsar/psrcat>



**Figure 3.** 5.5-GHz ATCA image of the field surrounding 47 Tuc, encompassing the 8.9-arcmin full width at half-power (FWHP) of the primary beam at 5.5 GHz (at 9.0 GHz, the FWHP is 5.3 arcmin). Red circle shows the 24-arcsec core radius, with the cluster centre marked by the red cross. Sources detected by AEGEAN at 5.5 (9.0) GHz are denoted by yellow (cyan) circles, except for X9, which is the one orange circle inside the core radius.

W42) with V1. A far-ultraviolet (UV) observation by Knigge et al. (2002) identified V1 as far-UV bright and variable.

#### 4.1 Optical/Ultraviolet/X-ray properties

Paresce et al. (1992) suggested that the broad-band optical-through-UV spectrum of the source was consistent with an accretion disc in a quiescent CV, and on the basis of its high X-ray-to-optical flux ratio, suggested that the system could be an intermediate polar (a magnetic CV in which the accretion disc is disrupted inside the white dwarf magnetosphere, causing the infalling matter to accrete along the magnetic field lines). V1 is located bluewards of the cluster main sequence in both  $U$  against  $(U - V)$  and  $V$  against  $(V - I)$  colour-magnitude diagrams (Edmonds et al. 2003a) and shows significant optical flickering (Edmonds et al. 2003b), demonstrating that there is a substantial contribution to the optical light from the accretion

disc. The (non-simultaneous) broad-band infrared through far-UV spectral energy distribution (SED) could be qualitatively fit by an optically thick model atmosphere of temperature 12 000 K and effective radius  $0.18 R_{\odot}$ , presumably associated with the accretion disc (Knigge et al. 2008).

Time series analysis of the optical counterpart by Edmonds et al. (2003b) found a marginally significant 3.5-h sinusoidal signal in the  $V$ -band power spectrum that implied an orbital period of  $\sim 3.5$  or 7 h, depending on whether or not the periodicity could be ascribed to ellipsoidal modulations. For a Roche lobe filling main-sequence donor star, Knigge et al. (2008) found that a 7 h period would imply a donor that was too bright at wavelengths  $> 5000 \text{ \AA}$ . For non-ellipsoidal variability, a 3.5 h period would then imply a donor of mass  $0.5 M_{\odot}$ , which, while not required, could be accommodated by their model for the broad-band spectrum, which was dominated by the hot accretion disc. In slitless UV spectroscopy with *HST*,

**Table 2.** Fitted positions and flux densities of the radio sources detected at  $>5.5\sigma$  by AEGEAN. Quoted uncertainties are the  $1\sigma$  uncertainties on the elliptical Gaussian fit parameters. Identifications show the associated X-ray wadetect identifications (W-labels) from Grindlay et al. (2001) and Heinke et al. (2005b), and the radio source numbers (MA-labels) from McConnell & Ables (2000). Upper limits are given at the  $5.5\sigma$  level. The upper limits at 9 GHz vary depending on the primary beam response at the source position.

RA (J2000)	Dec. (J2000)	5.5-GHz peak flux density ( $\mu\text{Jy beam}^{-1}$ )	9.0-GHz peak flux density ( $\mu\text{Jy beam}^{-1}$ )	ID	Offset from cluster centre (arcmin)
00 23 28.608 $\pm$ 0.008	-72 03 53.62 $\pm$ 0.16	32 $\pm$ 4	<76		3.01
00 23 35.756 $\pm$ 0.007	-72 01 26.24 $\pm$ 0.13	53 $\pm$ 5	<191	MA2	4.14
00 23 40.868 $\pm$ 0.002	-72 05 11.62 $\pm$ 0.04	116 $\pm$ 3	52 $\pm$ 2	MA3	1.93
00 23 46.130 $\pm$ 0.008	-72 07 15.21 $\pm$ 0.16	31 $\pm$ 4	<66		2.81
00 23 52.358 $\pm$ 0.008	-72 03 56.36 $\pm$ 0.15	27 $\pm$ 3	<37		1.39
00 24 04.247 $\pm$ 0.006	-72 04 58.09 $\pm$ 0.12	34 $\pm$ 3	30 $\pm$ 2	W42 (X9)	0.14
00 24 08.583 $\pm$ 0.009	-72 07 08.40 $\pm$ 0.15	29 $\pm$ 3	<53	W186	2.27
00 24 10.304 $\pm$ 0.004	-72 07 41.30 $\pm$ 0.08	57 $\pm$ 3	<66	MA6	2.83
00 24 13.313 $\pm$ 0.003	-72 03 32.73 $\pm$ 0.05	71 $\pm$ 3	35 $\pm$ 1	MA7	1.46
00 24 18.081 $\pm$ 0.009	-72 06 19.54 $\pm$ 0.13	26 $\pm$ 3	<44	W231	1.73
00 24 27.990 $\pm$ 0.007	-72 06 03.82 $\pm$ 0.14	30 $\pm$ 3	<48		2.09
00 24 35.034 $\pm$ 0.008	-72 05 01.71 $\pm$ 0.15	33 $\pm$ 4	<48	W132	2.26
00 24 47.350 $\pm$ 0.010	-72 07 53.63 $\pm$ 0.12	40 $\pm$ 4	<249		4.40
00 24 55.057 $\pm$ 0.010	-72 05 28.50 $\pm$ 0.14	37 $\pm$ 4	<144		3.84

**Table 3.** Fitted 5.5 GHz positions and flux densities of the MSPs detected at  $>3\sigma$ . All known MSP positions were inspected by eye. Where radio emission was detected at the pulsar position, a point source fit was carried out using the AIPS task JMFIT.

RA (J2000)	Dec. (J2000)	Peak flux density ( $\mu\text{Jy beam}^{-1}$ )	ID
00 23 59.49 $\pm$ 0.04	-72 03 58.8 $\pm$ 0.2	19 $\pm$ 5	MSP-J
00 24 04.68 $\pm$ 0.05	-72 04 54.4 $\pm$ 0.3	16 $\pm$ 5	MSP-O
00 24 06.71 $\pm$ 0.07	-72 04 06.7 $\pm$ 0.4	11 $\pm$ 5	MSP-H
00 24 08.02 $\pm$ 0.05	-72 04 39.6 $\pm$ 0.3	15 $\pm$ 5	MSP-G/I
00 24 08.47 $\pm$ 0.05	-72 04 38.6 $\pm$ 0.3	14 $\pm$ 5	MSP-T
00 24 13.92 $\pm$ 0.03	-72 04 43.4 $\pm$ 0.2	23 $\pm$ 5	MSP-D
00 24 16.63 $\pm$ 0.05	-72 04 25.0 $\pm$ 0.3	16 $\pm$ 5	MSP-Q

Knigge et al. (2008) also detected the spectroscopic signature of a relatively high-inclination accretion disc or disc wind, namely a strong, double-peaked C IV emission line, which they took to confirm the identification of the source as a CV.

With a 0.5–6 keV luminosity of  $0.6\text{--}1.0 \times 10^{33}$  erg s $^{-1}$  (Heinke et al. 2005b, after scaling to our adopted distance of 4.57 kpc), the high X-ray-to-optical flux ratio ( $F_X/F_{\text{opt}} \sim 5$ ) is consistent with the system being a CV, but is higher than any known field CV, and comparable only to another (confirmed magnetic) CV in 47 Tuc, V3/X10 (Edmonds et al. 2003b; Heinke et al. 2005b). While Grindlay et al. (2001) reported a marginal detection of a 218 s periodicity in the X-ray emission from X9, the original claim was not highly significant, and attempts with larger data sets to recover this periodicity have failed (Bahramian et al. in preparation).

The 2000 *Chandra* X-ray spectrum of X9 could be fit by a thermal bremsstrahlung model with a temperature of  $32 \pm 6$  keV (Grindlay et al. 2001). However, a higher quality 2002 *Chandra* spectrum revealed additional features (Heinke et al. 2005b). A strong emission line (likely O VIII) at 0.65 keV superimposed on a hard continuum could be fit with a thermal plasma model, with two MEKAL components at 0.25 and  $>17$  keV, together with a third, highly absorbed component needed to fit the spectrum above 6 keV. This is not typical of a CV, but equally is not obviously indicative of any other class of source. However, the long exposure time ( $\sim 70$  ks

in 2000 and  $\sim 280$  ks in 2002) and the low absorption towards 47 Tuc ( $N_H = 1.3 \times 10^{20}$  cm $^{-2}$ ; Heinke et al. 2005b) imply that the spectrum is of higher quality than typically available for accreting stellar-mass compact objects. Since fits to MEKAL components with high temperatures are typically indistinguishable from power-law spectral fits, we therefore refit a short, 5.3 ks observation (ObsID 3384, from 2002 September 30, taken in subarray mode to alleviate pile-up) with a model consisting of an absorbed power-law plus a Gaussian line to represent the low-energy MEKAL component, to enable a comparison with typical spectra from other classes of source (see Sections 4.3 and 4.4). Fixing the absorption to the cluster value, we found a fitted photon index of  $\Gamma = 1.06 \pm 0.24$ , a line energy of  $0.56 \pm 0.03$  keV, and a line width of  $0.10 \pm 0.03$  keV.

#### 4.2 Radio emission from cataclysmic variables

Our radio detection of X9 provides new constraints on the nature of the accreting object. Since the source was previously identified as a CV, we first compare its radio properties with those of known CVs, of which only a handful have been detected in the radio band to date.

Of the magnetic CVs, the most luminous persistent radio emitter is the rapidly rotating intermediate polar AE Aqr, with a typical 5-GHz flux density of 4–8 mJy beam $^{-1}$ . Its spin period of just 33 s (Patterson 1979) creates a propeller effect (Wynn, King & Horne 1995; Eracleous & Horne 1996), with the expulsion of magnetized plasma clouds giving rise to the observed, rapidly variable synchrotron emission (Meintjes & Venter 2005), which has a typical spectral index of 0.35–0.60. At a distance of 86 pc, its maximum measured 5-GHz flux density of 16 mJy (during a short-duration,  $\sim 2$ -hour flare; see Bastian, Dulk & Chanmugam 1988; Abada-Simon et al. 1993) would correspond to a radio luminosity of  $7 \times 10^{26}$  erg s $^{-1}$ .

Other than AE Aqr, only the two polars AM Her (Chanmugam & Dulk 1982) and AR UMa (Mason & Gray 2007) have been found to be persistent radio emitters among the magnetic CVs. Their quiescent emission ( $L_r \sim 2 \times 10^{25}$  erg s $^{-1}$ ) has been attributed to gyrosynchrotron emission from energetic electrons in the white

dwarf magnetosphere, with occasional highly circularly-polarized flaring events due to cyclotron maser emission (Mason & Gray 2007). The quiescent emission of AM Her appeared to be relatively stable over a 10-year period (Chanmugam & Dulk 1982; Pavelin, Spencer & Davis 1994), and from observations at 4.9 and 8.4 GHz taken 22 yr apart, we derive a non-simultaneous spectral index of  $-0.3 \pm 0.3$ .

The most luminous reported radio emission from a CV was a decaying flare detected from the intermediate polar DQ Her by Pavelin et al. (1994). Over 30 min, the flux density decreased by a factor of 4, with an initial radio luminosity of  $L_r = 5 \times 10^{27}$  erg s $^{-1}$ . The system was not detected on three further occasions. Similarly short-time-scale flares with comparable luminosities have also been reported from V834 Cen (Wright et al. 1988) and BG CMi (Pavelin et al. 1994), although these detections were both lower-significance, and the former was from a single-dish observation and therefore potentially more susceptible to the effects of both source confusion and radio frequency interference.

Of the non-magnetic CVs, the only published radio detections to date are from the dwarf novae SS Cyg, EM Cyg, and SU UMa, and the nova-like systems V3885 Sgr, TT Ari, RW Sex, and V603 Aql. Of these, the most well-studied is SS Cyg, whose radio counterpart has been repeatedly detected at the peak of its frequent outbursts, and whose high brightness temperature radio emission has been interpreted as synchrotron emission from a jet (Körding et al. 2008). At a distance of  $114 \pm 2$  pc, its brightest detected radio flare of 3 mJy beam $^{-1}$  (Miller-Jones et al. 2013) corresponds to a radio luminosity of  $2.3 \times 10^{26}$  erg s $^{-1}$ . Single detections of both SU UMa (Benz, Fuerst & Kiplinger 1983) and EM Cyg (Benz & Güdel 1989) implied similar radio luminosities of  $\sim 1\text{--}5 \times 10^{26}$  erg s $^{-1}$  (depending on the poorly constrained source distances). The four nova-like systems were detected at levels of 0.03–0.2 mJy beam $^{-1}$  (Körding et al. 2011; Coppejans et al. 2015), which for the estimated distance ranges imply radio luminosities of  $4.5 \times 10^{24}\text{--}1.6 \times 10^{26}$  erg s $^{-1}$ .

In summary, our radio detection of X9 is an order of magnitude more luminous than the persistent emission detected from any known CV. While it is comparable to the peak luminosities of infrequent short-time-scale flaring events, the stability of the source over the course of each 10-h observing run, and between the two epochs in 2010 and 2013, argues against an origin as flaring events. Furthermore, the absence of a high level of circular polarization suggests that the emission is unlikely to arise from an electron cyclotron maser. Thus, in light of our radio data, we do not favour an interpretation of X9 as a CV.

### 4.3 A transitional millisecond pulsar?

Another class of accreting sources known to produce flat-spectrum radio emission are the binary millisecond pulsars that show occasional transitions to and from an accretion-powered state characteristic of an LMXB. To date, we know of three such confirmed transitional binary systems, which can spend years in a phase of quiescent accretion, with X-ray luminosities in the range  $10^{32}\text{--}10^{34}$  erg s $^{-1}$  (de Martino et al. 2013; Patruno et al. 2014). Both in this quiescent phase and also during the brighter outburst phase the observed millisecond X-ray pulsations at the pulsar spin period show that some fraction of the accreted material is reaching the NS surface (Papitto et al. 2013, 2015; Archibald et al. 2015). All three systems have also shown flat-spectrum continuum radio emission when in their accretion-powered states (Bond et al. 2002; Hill et al. 2011; Papitto et al. 2013; Bassa et al. 2014; Deller et al. 2015), with inferred radio luminosities significantly higher than expected

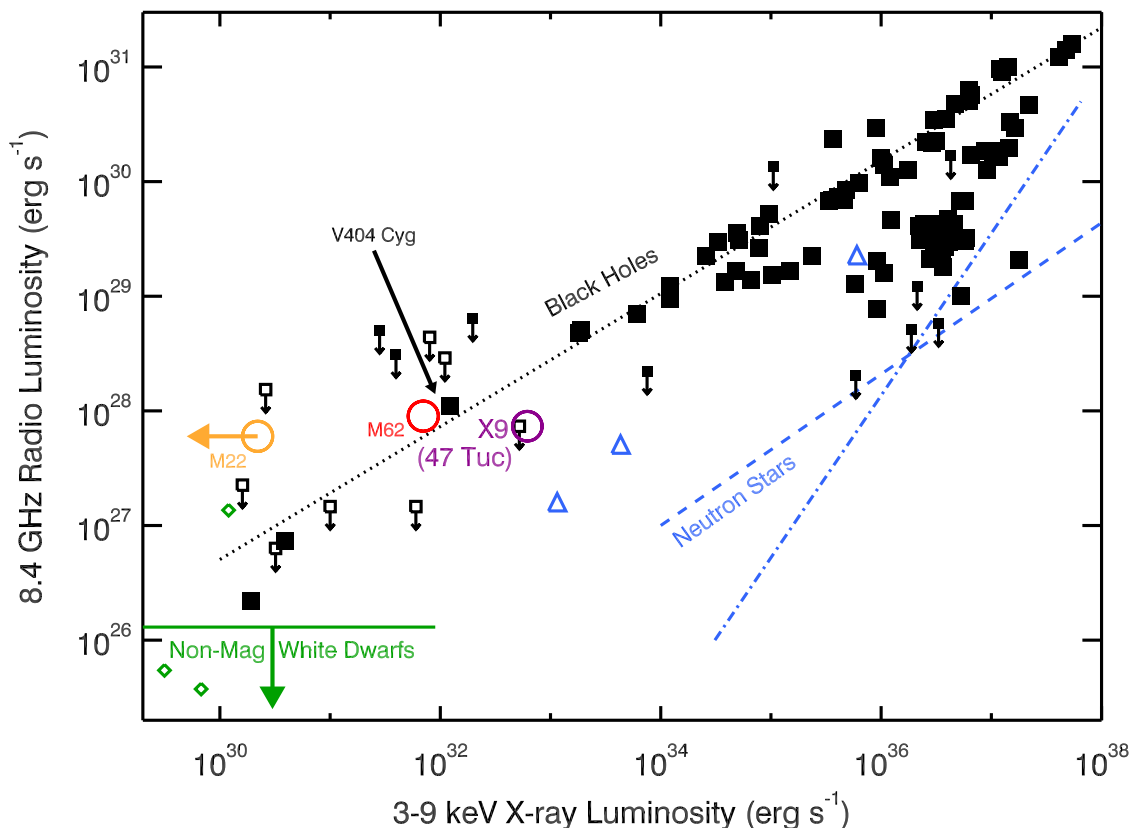
from an extrapolation of the radio/X-ray correlation for the traditional atoll source NSs (Fig. 4; see Deller et al. 2015). However, the proposed correlation between their measured radio and X-ray luminosities (Deller et al. 2015) implies radio emission a factor of  $\sim 6$  lower than seen for X9 at a similar X-ray luminosity (see Fig. 4).

The three transitional millisecond pulsar systems share some unusual X-ray variability characteristics, which can be compared to the X-ray variations of X9. Each transitional system has switched at least once between a radio pulsar state (with  $L_X \sim 10^{32}$  erg s $^{-1}$ ) and a low-luminosity accretion state (with  $L_X$  averaging  $\sim 4 \times 10^{33}$  erg s $^{-1}$ ), with M28I also showing a bright accretion outburst at  $L_X > 10^{36}$  erg s $^{-1}$ . Within the low-luminosity accretion state, each system switches among three modes; a ‘high’ mode showing pulsations, sudden dips to a ‘low’ mode (transitions less than 30 s, average flux a factor 5–10 lower), and a rarer ‘flaring’ mode (lasting 1–45 min, typically a factor  $>4$  brighter). This state also shows a remarkably constant average X-ray flux (set by the ‘high’ mode flux); multiple observations over years have not found factor-of-2 variations (de Martino et al. 2013; Linares et al. 2014; Bogdanov et al. 2015). This is in contrast to X9, where the average flux varies smoothly by a factor of 10 over time-scales of several days (Bahramian et al. 2015, in preparation).

Each transitional millisecond pulsar system also shows all three modes. Dips to the ‘low’ mode can be quite short ( $<100$  s), below our capacity to detect in the light curve of X9. However, dips longer than 100 s occur frequently; in PSR J1023+0038, dips longer than 200 s occur every 3 ks (Bogdanov et al. 2015), and in XSS J12270–4859, dips between 100 and 1100 s also occur on average every 3 ks (de Martino et al. 2013). The M28I light curve of Linares et al. (2014), limited to binning of 500 s, does not probe such short time-scales, but nevertheless showed six low states of length exceeding 1 ks, spread over 234 ks. Flares are also common, occurring every 20 ks or so in PSR J1023+0038 (Bogdanov et al. 2015), and at similar frequency (occupying 1/10 to 1/3 of the time) in XSS J12270–4859 (de Martino et al. 2013). Careful inspection of the 300 ks of ACIS-S light curves of X9 from 2002 (Heinke et al. 2005b), binned at 50 s, fails to show evidence of either sharp transitions to low modes, or flaring by a factor  $>2$ . Extrapolation from the transitional millisecond pulsars suggests that of order 100 low modes, and 15 flaring episodes, should have been observed; the lack of these behaviours strongly suggests that X9 is not a similar system as the transitional millisecond pulsars.

Furthermore, the optical spectrum of PSR J1023+0038 during its accretion-powered state shows multiple double-peaked He emission lines (Wang et al. 2009), in contrast to X9, which shows no strong evidence for He emission in its far-UV spectrum (Knigge et al. 2008). The X-ray spectrum of X9 (Section 4.1) is also markedly different from the spectra of the transitional millisecond pulsars when at comparable luminosities in the accretion-powered state. With a similarly low-absorption column density of  $N_H \sim 3 \times 10^{20}$  cm $^{-2}$ , PSR J1023+0038 shows no evidence for an emission line near 0.6 keV, and the spectrum can be well fit by a simple power-law model with no requirement for an additional MEKAL component (Bogdanov et al. 2015). And despite the larger column densities towards XSS J12270–4859 and M28I, there is no evidence for such an emission line in high-quality spectra of either source (de Martino et al. 2010; Papitto et al. 2013). Furthermore, at X-ray luminosities of  $10^{33}\text{--}10^{34}$  erg s $^{-1}$  all three transitional millisecond pulsars can be fit by simple power-law spectra with photon indices of  $\Gamma = 1.5\text{--}1.7$  (de Martino et al. 2010; Papitto et al. 2013; Bogdanov et al. 2015), significantly softer than seen in X9 (Section 4.1).





**Figure 4.** Radio/X-ray correlation in hard state and quiescent stellar-mass BHs. Black squares show field BHs from the literature (Miller-Jones et al. 2011; Gallo, Miller & Fender 2012; Ratti et al. 2012; Corbel et al. 2013; Gallo et al. 2014), blue triangles show the transitional binary MSP systems (Hill et al. 2011; Papitto et al. 2013; Deller et al. 2015), green diamonds show the magnetic CVs (Chanmugam & Dulk 1982; Abada-Simon et al. 1993; Mason & Gray 2007), yellow circle shows the M22 candidates (Strader et al. 2012a), red circle shows the M62 candidate (Chomiuk et al. 2013), and purple circle shows 47 Tuc X9. Filled symbols are from simultaneous radio and X-ray data, whereas open symbols are non-simultaneous measurements. Black dotted line shows the best-fitting relation for the BH systems ( $L_r \propto L_x^{0.58}$ ; Gallo et al. 2006). Blue dashed and dash-dotted lines show two possible radio/X-ray correlations for NS systems (Migliari & Fender 2006), and green line shows the maximum radio luminosity of non-magnetic accreting white dwarf systems in outburst (Körding et al. 2008, 2011). X9 falls within the scatter of the best-fitting radio/X-ray correlation for BHs, and is too radio luminous to be a CV.

In summary, while we cannot explicitly rule out X9 being a transitional millisecond pulsar, the available X-ray, optical, and UV data, taken together with the relatively high radio luminosity, lead us to consider this explanation to be unlikely.

#### 4.4 X9 as a black hole

The high radio luminosity implied by our observations of X9 suggests an alternative identification of X9, as a stellar-mass BH. Comparison of our radio measurements with the X-ray luminosity measured by Heinke et al. (2005b) shows that the source lies very close to the well-established radio/X-ray correlation for accreting stellar-mass BHs (Fig. 4). And while the X-ray and radio observations were separated by 8–10 yr, the relative stability of the radio flux density between 2010 and 2013, and the X-ray flux between 1992 and 2002 (Verbunt & Hasinger 1998; Grindlay et al. 2001; Heinke et al. 2005b) helps assuage (but does not eliminate) concerns about strong source variability.

Knigge et al. (2008) found the broad-band optical-through-UV spectrum of V1 to be dominated by an optically thick component of temperature  $\sim 12\,000$  K and radius  $\sim 0.18 R_\odot$ , consistent with a disc-dominated nova-like CV. However, as noted by Marsh, Robinson & Wood (1994), there are no strong differences between the optical spectra of dwarf novae and those of quiescent BHs. In the

case of V1, we note the similarity to the broad-band spectra of several dynamically confirmed quiescent BHs (McClintock et al. 2003; Froning et al. 2011; Hynes & Robinson 2012), which could all be fit by blackbodies of temperature 5000–13 000 K, with areas much smaller (0.06–1.25 per cent) than the projected area of the expected truncated quiescent accretion disc (i.e. radii of 0.01–0.09  $R_\odot$ ). This emission was explained as either the impact point of the accretion stream on the disc (McClintock et al. 2003), or as emission from the inner part of the disc, close to the truncation radius (Hynes & Robinson 2012).

The main caveat to this explanation is that the X-ray spectrum of X9 is difficult to reconcile with those of known quiescent BHs, which at luminosities of  $10^{33}$   $\text{erg s}^{-1}$  are fit by relatively soft power-law spectra with photon indices of  $\Gamma \sim 2.1$  (Plotkin, Gallo & Jonker 2013). While no evidence for low-energy emission lines close to 0.6 keV has been observed in any quiescent BH, the high column densities towards most such systems would have precluded the detection of such a line. Only three known quiescent systems (XTE J1118+480, A0620–00, and MAXI J1659–152) have absorption column densities  $< 5 \times 10^{21} \text{ cm}^{-2}$  (Plotkin et al. 2013), none of which have stringent published constraints on the presence of low-energy emission lines. The only published quiescent spectrum of sufficiently high quality to investigate the presence of such lines is that of V404 Cyg (Bradley et al. 2007). That spectrum was

fit with an absorption column of  $7\text{--}9 \times 10^{21} \text{ cm}^{-2}$ , and clearly excludes a line of similar strength in the range 0.5–0.7 keV.<sup>2</sup> In summary, the X-ray spectrum, while not fully characteristic of a quiescent BH, is not better explained by any other known class of source.

## 5 THE NATURE OF THE DONOR

Having identified a BH as a plausible accretor, we now explore the properties of X9 to help determine the nature of the system.

### 5.1 Orbital period

We reanalysed the optical data of Edmonds et al. (2003b) to check the significance of the marginal 3.5-h sinusoidal signal and found the false detection probability to be  $\gtrsim 10$  per cent, implying a significance of  $< 2\sigma$ . We also searched for shorter periods than the 1.5–14 h range considered by Edmonds et al. (2003b), finding nothing significant at the  $3\sigma$  level. Thus we have no good photometric constraint on the orbital period.

The measured *V* magnitude of X9 is in the range 19.8–21.4 (Edmonds et al. 2003a; Beccari et al. 2014), which at 4.57 kpc implies an absolute magnitude in the range 6.5–8.1. Should the optical light be attributed to the donor star, this rules out a subgiant or high-mass companion and implies a lower main-sequence donor of spectral class later than mid-*K*. Should the optical emission be dominated by the accretion flow (as seems likely given the spectral fitting of Knigge et al. 2008), the donor star would be fainter still. As determined by Knigge et al. (2008), periods shorter than 7 h would be required for Roche lobe overflow of a main-sequence donor star with a sufficiently faint visual magnitude.

At orbital periods longer than a few hours, mass transfer in X-ray binaries is driven by magnetic braking or nuclear evolution of the donor star. In this regime, there is a well-established positive empirical correlation between orbital period and quiescent X-ray luminosity (Garcia et al. 2001; McClintock, Narayan & Rybicki 2004; Armas Padilla et al. 2014), as expected from binary evolution theory in the case where quiescent accretion proceeds via an advection-dominated accretion flow (ADAF; Menou et al. 1999). At shorter orbital periods (less than a few hours), angular momentum loss via gravitational wave radiation will take over as the dominant mechanism driving the mass transfer. This should lead to mass-transfer rates (and hence X-ray luminosities) that increase with decreasing orbital period, implying the existence of a minimum X-ray luminosity at a bifurcation period of  $\sim 10$  h (Menou et al. 1999). While there is a dearth of known BH systems at short orbital periods, there is some evidence for a minimum quiescent luminosity (Gallo et al. 2008), at a level consistent with the best current constraints on the recently discovered BH candidates in the GC M22 (Strader et al. 2012a). The recent detection of two BHs with orbital periods  $< 3$  h has begun to probe the short-period regime, with MAXI J1659–152 (Homan et al. 2013) and Swift J1357.2–0933 (Armas Padilla et al. 2014) both showing higher quiescent luminosities than systems with orbital periods a few times longer (although the uncertain distance prevents a definitive conclusion in the latter case).

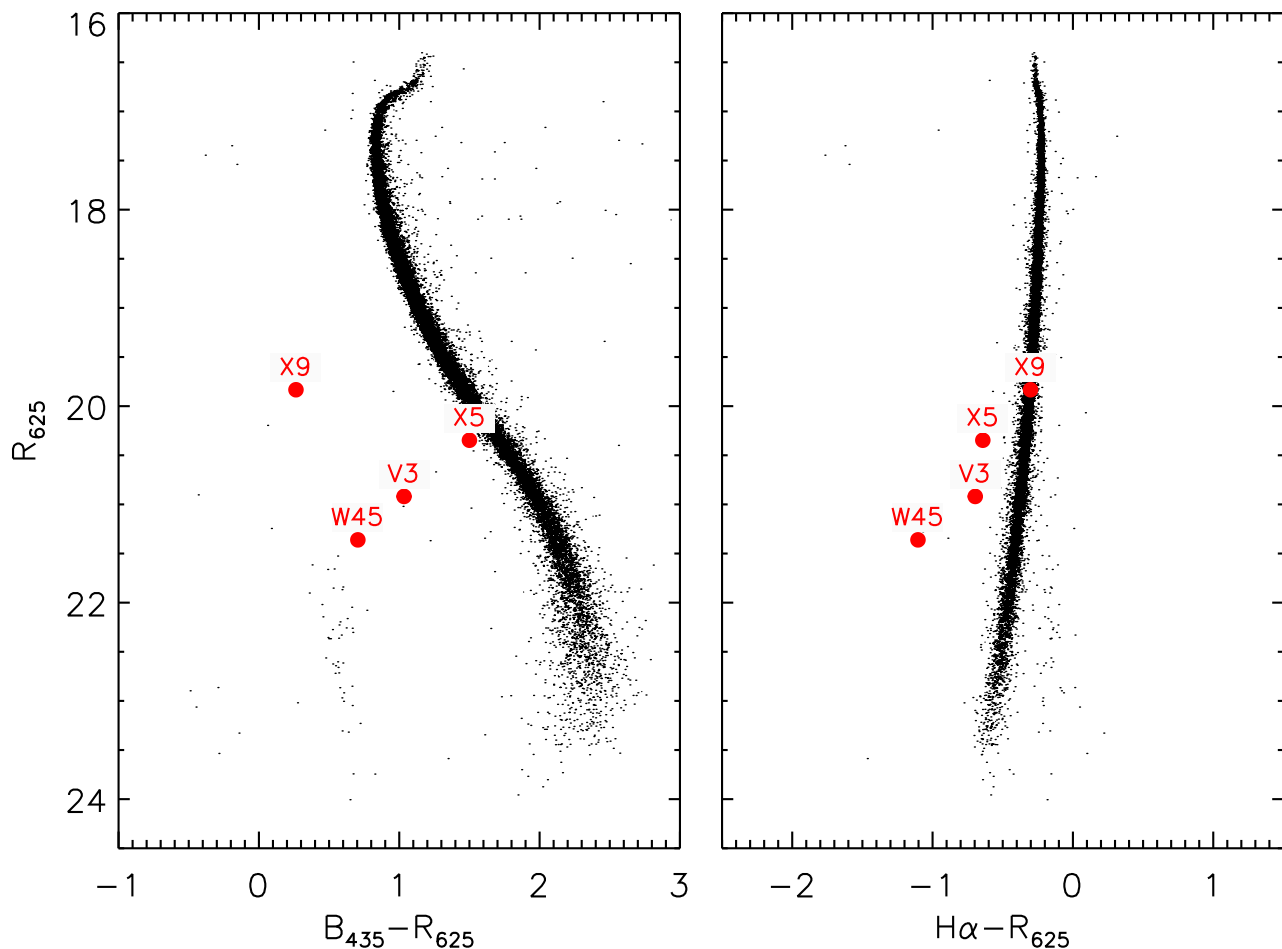
<sup>2</sup> The published spectrum shows residuals close to 0.8 keV, but they are not statistically significant, and a line at this energy has no clear explanation, in contrast to the 0.65 keV line in X9 that could potentially be explained as O VIII.

At  $10^{33} \text{ erg s}^{-1}$ , the X-ray luminosity of X9 is high for a quiescent BH, exceeding that of V404 Cygni (Fig. 4), the most luminous known quiescent field BH X-ray binary. The empirical relationship between orbital period and quiescent X-ray luminosity would then imply either a period that is roughly comparable to the 6.5 d period of V404 Cyg (Casares, Charles & Naylor 1992), or else a very short orbital period in an ultracompact system (i.e. with a white dwarf or helium star donor). The former scenario is ruled out by the measured optical emission, although given the scatter on the empirical period–luminosity correlation, we cannot exclude the possibility of a low-mass main-sequence donor with a period  $< 7$  h. Should the system be ultracompact, the absence of He II 1640-Å line emission in the far-UV spectrum of Knigge et al. (2008) would suggest a white dwarf rather than a helium star donor.

Although no Galactic ultracompact BH systems have yet been discovered, it is possible to form such systems in a GC environment following an exchange interaction, a long phase of subsequent hardening through stellar encounters, and finally triple-induced mass transfer (Ivanova et al. 2010). Indeed, the BH in the extragalactic GC RZ 2109 in NGC 4472 is believed to be an ultracompact system with a white dwarf donor and an orbital period of  $\sim 5$  min (Zepf et al. 2007, 2008; Gnedin et al. 2009) and also shows an excess of soft photons that can be modelled as O VIII emission (Joseph et al. 2015), so such a scenario would not be wholly unprecedented.

Given the similarities between the quiescent luminosities of X9 and V404 Cyg, we might expect similar mass transfer rates, i.e.  $\sim 10^{-9} M_{\odot} \text{ yr}^{-1}$  (King 1993). Such a high mass transfer rate would require the system to be ultracompact, with an orbital period of  $\sim 20$  min (van Haaften et al. 2012). While NSs in ultracompact systems with such short orbital periods are all persistent X-ray sources (Heinke et al. 2013), the low X-ray luminosity of X9 implies that it must be a quiescent transient system, which undergoes occasional outbursts due to a disc instability. Since the critical mass transfer rate for the disc instability model scales with accretor mass as  $M_a^{0.3}$ , then BH systems will become transient at slightly higher mass transfer rates. van Haaften et al. (2012, see their fig. 8) show that the highest mass transfer rate for which a BH ultracompact system will become transient (a few tens of Myr following the onset of mass transfer) is a few times  $10^{-10} M_{\odot} \text{ yr}^{-1}$  (assuming a pure He donor), with an orbital period of  $\sim 25$  min and a donor of mass  $0.02 M_{\odot}$ . If the mass transfer rate is to remain approximately similar to that of V404 Cyg, the system should not be significantly older (and with a consequently longer orbital period) than this.

For the disc instability model to operate, the outer disc would need to be below the ionization temperature of the material, implying that the  $\sim 0.18\text{--}R_{\odot}$  optically thick component fit to the SED by Knigge et al. (2008) cannot extend over the entire disc. Should the system be ultracompact, then for a 25 min orbit and a BH mass of 3–20  $M_{\odot}$ , the circularization radius should be  $1.5\text{--}3.7 \times 10^{10} \text{ cm}$  (from van Haaften et al. 2012, fig. 5), so the fitted emission size would be 34–85 per cent of the circularization radius. While this might seem uncomfortably large, the physical size is comparable to (albeit slightly larger than) that seen in other quiescent BH X-ray binaries (McClintock et al. 2003; Froning et al. 2011; Hynes & Robinson 2012, as discussed in Section 4.4), and is consistent with typical truncation radii of quiescent discs (a few thousand Schwarzschild radii; see e.g. Menou et al. 2000). While a cooler outer disc might be easier to accommodate in a longer period, main-sequence system, an ultracompact system remains plausible, particularly given that the non-simultaneity of the data and the



**Figure 5.** Colour–magnitude diagrams showing the  $B_{435}$ ,  $R_{625}$ , and  $H\alpha$  photometry obtained from the *HST* ACS/WFC GO-9281 images of 47 Tuc. The optical counterpart to X9 is shown in red, and the surrounding stars are plotted with black points. For comparison, we also show (in red) the positions of the optical counterparts to three other *Chandra* sources in 47 Tuc: V3 (W27/X10) and W45 (classified as CVs) and X5 (W58; classified as a quiescent NS LMXB).

time-varying nature of the source permitted only a qualitative fit to the SED. Quasi-simultaneous, broad-band photometry would be required to properly characterize the size of the emitting region and hence ascertain the viability of this scenario.

Within the disc truncation radius, quiescent BHs host radiatively inefficient accretion flows (e.g. ADAFs; Narayan & Yi 1994), with a population of hot electrons producing the observed X-ray emission via thermal Comptonization. In an ultracompact system, the accreted material would consist of more massive ions than the hydrogen-rich material being accreted by all known quiescent BHs in the field. The additional gravitational energy liberated could potentially increase the temperature of the particles within the ADAF, thereby affecting the photon index of the power-law and leading to a harder spectrum for X9 in comparison to known quiescent BHs. However, an in-depth exploration of this issue is beyond the scope of this paper.

## 5.2 Constraints on the $H\alpha$ emission

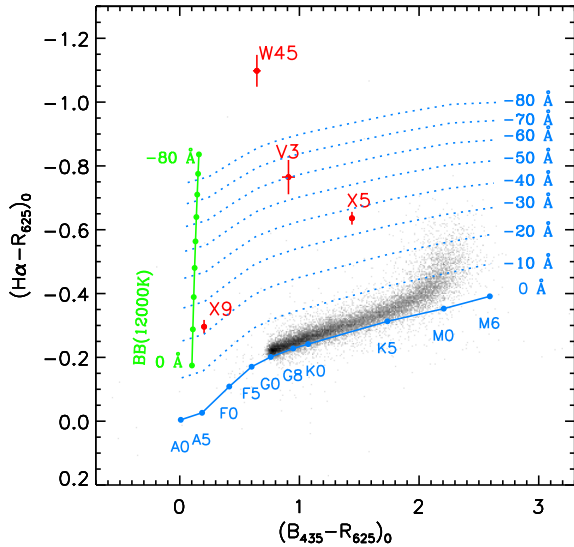
Since an ultracompact system must have a hydrogen-deficient, degenerate donor star, a test for the presence of  $H\alpha$  emission could also help to confirm or refute the ultracompact scenario. Whereas no Balmer emission would be expected from an ultracompact system, the  $H\alpha$  equivalent width (EW) of V404 Cyg was measured by Casares et al. (1993) to be  $-38.7 \text{ \AA}$ . This is roughly as expected

from the anticorrelation between X-ray luminosity and EW reported by Fender et al. (2009), for a system of luminosity  $10^{33} \text{ erg s}^{-1}$ .

Beccari et al. (2014) used archival *HST* data to calculate  $(V_{606} - H\alpha)$  and  $(V_{606} - I_{814})$  colours for X9, which showed an  $H\alpha$  excess with an EW of  $-125 \text{ \AA}$ . However, their  $V_{606}$  and  $I_{814}$  colours on the one hand, and  $H\alpha$  data on the other, were taken in different years, and a comparison of their  $V$  band ( $F606W$ ) data from 2006 March with  $F555W$  observations from 1999 July (Edmonds et al. 2003a) shows a difference of 1.55 mag, sufficient to render their non-simultaneous  $(V_{606} - H\alpha)$  colour meaningless.

To obtain a better measurement of the  $H\alpha$  emission in X9, we analysed an *HST* data set of quasi-simultaneous images of 47 Tuc in  $H\alpha$  and the surrounding continuum. The observations were taken with the Wide Field Channel (WFC) on the Advanced Camera for Surveys (ACS) under programme GO-9281 (PI: J. Grindlay). Images were obtained through blue ( $F435W$ ), red ( $F625W$ ), and  $H\alpha$  ( $F658N$ ) filters, with total exposure times of 955, 1320, and 7440 s, respectively. The observations were split over three visits, on 2002 September 30, October 2, and October 11, with observations being taken in all three filters at each epoch. The data were taken simultaneously with the 2002 *Chandra* observations of 47 Tuc presented in Heinke et al. (2005b); a full description of the GO-9281 data and results is forthcoming (van den Berg et al. in preparation).

We retrieved the flat-fielded images, corrected for charge-transfer efficiency losses, from the *HST* archive. These images still suffer



**Figure 6.** Colour–colour diagram showing in red the optical counterparts to X9 and the three comparison *Chandra* sources from Fig. 5. Colours of surrounding 47 Tuc stars are shown as black points. The photometry has been dereddened to account for the small extinction towards 47 Tuc ( $E(B - V) = 0.04$ ). The expected colours for main-sequence stars of various spectral types are shown in blue, and were computed with the *SYNPHOT* package using low-metallicity ( $\log Z = -2.5$ ) Castelli–Kurucz model spectra. The solid blue line is for  $\text{EW}(\text{H}\alpha) = 0 \text{ \AA}$ , and the dotted lines show the effect of adding a Gaussian emission line with a FWHM of  $25 \text{ \AA}$  in increments of  $\Delta\text{EW}(\text{H}\alpha) = -10 \text{ \AA}$ . In green we show the synthetic colours for a 12 000-K blackbody model (Knigge et al. 2008) with an added Gaussian emission line of different EWs.

from significant geometric distortion, which we corrected for with the *DRIZZLEPAC* software (Gonzaga et al. 2012). The individual images were astrometrically aligned and subsequently combined for each filter using *astrodrizzle*, which creates stacked images that are cleaned of cosmic rays, and that are without geometric distortion. These master images are twice-oversampled to 0.025 arcsec per pixel. All images except two 10-s *F625W* exposures and one 10-s *F435W* exposure, were included in the stacks.

Photometry for X9 and the surrounding stars was extracted using the point-spread-function fitting package *DAOPHOT*. The magnitudes were calibrated to the VEGAMAG system using the zeropoints on the STScI website.<sup>3</sup> The position of X9 in the colour–magnitude diagram (Fig. 5) shows that it is indeed a very blue object, but, in contrast to the findings of Beccari et al. (2014), it does not stand out in  $(\text{H}\alpha - R_{625})$  colour from other stars of similar  $R_{625}$  magnitude. Since the average  $(\text{H}\alpha - R_{625})$  colour of stars varies with  $(B_{435} - R_{625})$  colour, we also compared the position of X9 in a colour–colour diagram (Fig. 6). Unfortunately, X9 is one of the bluest stars in the cluster, so there is a dearth of similarly blue stars. Instead, an estimate of the  $\text{H}\alpha$  EW can be made by comparing the unreddened colours of X9 with those expected for the blue component believed to dominate the spectrum of X9 between UV and infrared wavelengths (Knigge et al. 2008).

If X9 is an ultracompact binary, a 12 000 K blackbody would be a reasonable approximation of the optical spectrum. The difference between the actual and expected  $(\text{H}\alpha - R_{625})$  colour then suggests an excess emission in the  $\text{H}\alpha$  filter that is similar to the effect of adding an  $\text{H}\alpha$  emission line with an EW of about  $-10 \text{ \AA}$ . In an ultracompact binary, no  $\text{H}\alpha$  emission is expected. The small inferred

excess could point at an incorrect description of X9’s continuum emission by the assumed blackbody, or perhaps at the presence of an emission line other than  $\text{H}\alpha$ ; for example, the  $\text{C II/O II}$  emission line at  $6580 \text{ \AA}$  in the spectrum of the ultracompact binary 4U 0614+091, which has an EW of  $\sim 3 \text{ \AA}$  (Nelemans et al. 2004; Baglio et al. 2014). Since the X-ray luminosity of 4U 0614+091 ( $3 \times 10^{36} \text{ erg s}^{-1}$ ; Migliari et al. 2010) is significantly higher than that of X9, the outer disc in X9 is expected to be more optically thin in the continuum. Since the line emission remains optically thick (e.g. Williams 1980), the EW of these C/O lines might be expected to be larger in X9 (as also manifested in the anticorrelation between X-ray luminosity and  $\text{H}\alpha$  EW; Fender et al. 2009).

If X9 is not an ultracompact binary, then the appropriate comparison model should include absorption lines as seen in the spectra of optically thick accretion discs. Comparing the colours of X9 with those for an early A-type star would then suggest an  $\text{H}\alpha$  EW of about  $-20 \text{ \AA}$ . In this case, part of the excess emission could be explained by a true  $\text{H}\alpha$  emission line associated with the accretion disc, or part could be emission from the donor star, or perhaps a disc wind. The observed flux at red wavelengths in the SED of X9 could accommodate the signature of a cool ( $\sim 4000 \text{ K}$ ) secondary (Knigge et al. 2008), but not that of an A-type main-sequence star. Furthermore, given that X9 is variable and that the data points that make up the SED were not taken simultaneously, such an additional component may not be required. Regardless, it is clear that there is no strong evidence for an  $\text{H}\alpha$  excess from X9.

We can also compare our estimate of the  $\text{H}\alpha$  EW in X9 with that found by Wang et al. (2009) for the transitional millisecond pulsar PSR J1023+0038. Summing both the red and blue components of the  $\text{H}\alpha$  line in PSR J1023+0038, Wang et al. (2009) found a line flux of  $1.8 \times 10^{-14} \text{ erg cm}^{-2} \text{ s}^{-1}$ . Combining the  $R_{625}$  magnitude of 19.8 with our estimated  $\text{H}\alpha$  EW for X9 of  $-10 \text{ \AA}$  and accounting for the difference in source distance (assuming 1.37 kpc for PSR J1023+0038; Deller et al. 2012), we find the  $\text{H}\alpha$  line luminosity of X9 to be a factor of  $\sim 7$  times lower than that of J1023+0038, suggesting that X9 has either a smaller disc or less  $\text{H}\alpha$  emission. Despite similar absolute magnitudes in the *U* band (Knigge et al. 2008; Patruno et al. 2014), PSR J1023+0038 has a redder continuum than X9 [a  $(B - R)$  colour of 1.0 compared to 0.4 for X9]. A comparison of the optical magnitude of the accreting (disc-dominated) state of PSR J1023+0038 with that in its rotation-powered state suggests that the optical continuum emission is dominated by the disc rather than the donor star in the accretion-powered state (Thorstensen & Armstrong 2005; Wang et al. 2009). Thus, the redder continuum implies more emission from the outer disc. Together with the correlation between orbital period and quiescent X-ray luminosity, the anticorrelation between  $\text{H}\alpha$  EW and quiescent X-ray luminosity (Fender et al. 2009) implies that shorter-period systems (with a smaller disc) should have a higher  $\text{H}\alpha$  EW. Since the larger disc in PSR J1023+0038 has a higher  $\text{H}\alpha$  EW, we therefore conclude that X9 is likely hydrogen-deficient.

Finally, we note that  $\sim 70$  per cent of CVs are found to be  $\text{H}\alpha$  emitters, with the only magnetic systems found to lack  $\text{H}\alpha$  emission being polars in the low state (Witham et al. 2006). This provides additional circumstantial evidence against the CV scenario, although we note that the sample of Witham et al. (2006) included only a single intermediate polar.

## 6 DISCUSSION

X9 is the fourth BH candidate in a Galactic GC discovered via deep radio continuum observations. By design, the clusters selected

<sup>3</sup> <http://www.stsci.edu/hst/acs/analysis/zeropoints>

for our deep radio observations (M22, M62, and 47 Tuc) were all relatively massive ( $M > 3 \times 10^5 M_{\odot}$ ; Pryor & Meylan 1993; Kimmig et al. 2015). In the absence of significant natal kicks, the large masses imply a significant initial population of BHs, and the long evolutionary time-scales make them more likely to retain BHs (Heggie & Giersz 2014). While the absence of any BH candidates in M15 (Strader et al. 2012b) might suggest that other factors are at play, we note that at 10.4 kpc (Harris 1996), M15 is over 50 per cent more distant than the most distant of the other three clusters, M62. At the distance of M15, the four BH candidates detected to date would have a radio flux density of  $\sim 8 \mu\text{Jy beam}^{-1}$ , which would be  $< 4\sigma$  in the deepest existing image of the cluster (Strader et al. 2012b), and hence would remain unremarked.

Given that both recent observational and theoretical work point to a population of BHs in GCs, the absence of any detected X-ray outbursts from such objects in the Galaxy might at first seem surprising. All 10 of the bright, transient LMXBs in Galactic GCs (Bahramian et al. 2014) have been identified as hosting NSs. This could be taken to suggest that either the ratio of NS to BH LMXBs in GCs is enhanced over that seen in the field, or the properties of BH LMXBs found in GCs differ from those in the field. The likelihood of this can be addressed empirically. Combining the last comprehensive LMXB catalogue (Liu, van Paradijs & van den Heuvel 2007) with a more up-to-date catalogue of field BH LMXBs (Tetarenko et al., in preparation), we determined the number of transient systems of different types: 29 LMXBs with dynamically confirmed BHs or strong BH candidates; 14 LMXBs that are weak BH candidates (and thus could be confused with NS LMXBs); 60 LMXBs with either type I X-ray bursts or no indication of being a BH (and thus are assumed to be NS LMXBs). Ignoring the harder-to-differentiate weak BH candidates, we estimate the fraction of transient LMXBs in the field that are BHs to be  $32.6_{-4.8}^{+5.0}$  per cent. We can then estimate the probability of observing zero BH LMXBs in GCs given the 10 known transient NS LMXBs, assuming the field and GCs share the probability density function of a LMXB containing a BH in the field. We find this null hypothesis probability to be just 2.3 per cent. While this suggests there may be a difference between the field and GC populations of transient LMXBs, being  $< 3\sigma$  it cannot be taken as conclusive evidence. We note that this statement remains true even if we classify all the weak BH candidates in the field as BHs.

Furthermore, we note that three of the four cluster BH candidates identified to date could be ultracompact systems (see Strader et al. 2012a for M22, and Section 5 for 47 Tuc), whereas no such systems are known in the field. Kneivt et al. (2014) suggest that BHs in short orbital period binary systems could remain undetected due to selection effects. The correlation between orbital period and peak outburst luminosity (Wu et al. 2010) implies that the luminosity of short orbital period BHs may never exceed the threshold for radiatively efficient accretion, causing a system to remain in a low-luminosity hard state throughout its outbursts (Meyer-Hofmeister 2004). The weak irradiation also leads to significantly shorter outbursts, and the duty cycles are similarly reduced to low levels. The combination of these effects then implies that such outbursts could have been undetectable or overlooked by current or previous All Sky Monitors. A more sensitive future wide-field monitor such as proposed for LOFT (Maccarone et al. 2015) would be needed to detect any such faint outbursts.

Finally, we can make a simple comparison of the relative populations of accreting NS and BH X-ray binaries in the five clusters with deep, published radio imaging (M15, M19, M22, M62, 47 Tuc; Strader et al. 2012a,b; Chomiuk et al. 2013, this work). At present, we know of three NS LMXBs in M15 (Auriere, Le Fevre

& Terzan 1984; Charles, Jones & Naylor 1986; Heinke, Cohn & Luger 2009), none in M22 (Webb et al. 2004; Webb & Servillat 2013), four in M62 (Pooley et al. 2003; Bahramian et al. 2015), and five in 47 Tuc (Heinke et al. 2003, 2005a). M19 has no existing *Chandra* or *XMM* data, and the deepest X-ray limit to date is from *ROSAT*, with  $L_X = 3 \times 10^{33} \text{ erg s}^{-1}$  (Rappaport et al. 1994), which is not sufficiently deep to detect a population of quiescent accreting NSs. Thus we know of 12 accreting NSs in our small cluster sample, as compared to four BH candidates. Although the sample of clusters is still small, the nature of the BH candidates is still to be confirmed, and both populations are the subject of poorly understood selection effects (not least the varying sensitivities achieved in different clusters in the two bands); this implies a ratio in the detectable number of accreting BHs to NSs of the order of 1:3. Given the Galactic GC population of  $\sim 200$  LMXBs (Heinke et al. 2005a), this would then imply of order 60 accreting BHs in clusters, which could in principle be detected by combining deep radio and X-ray observations, almost doubling the known population of BH candidates from the field.

## 7 CONCLUSIONS

We have detected persistent radio emission from the known X-ray source X9 in the GC 47 Tuc, which had previously been identified as an intermediate polar. The measured radio flux density of  $42 \pm 4 \mu\text{Jy beam}^{-1}$  at 5.5 GHz implies a radio luminosity of  $5.8 \times 10^{27} \text{ erg s}^{-1}$ , which is significantly brighter than the persistent emission seen from any CV. The radio emission appears to be roughly constant from 2010 to 2013, as well as within an individual 10 h observation. Together with the absence of significant circular polarization, this also allows us to rule out flaring emission from a CV. Although transitional millisecond pulsar systems are known to produce flat-spectrum radio emission in their accreting states, they show lower radio luminosities, simpler X-ray spectra, and rather different X-ray variability than does X9. While we cannot definitively rule out this explanation, we find it unlikely. Combining our radio detection with archival *Chandra* X-ray data, we find that 47 Tuc X9 lies very close to the radio/X-ray correlation for quiescent stellar-mass BHs. The similarity of its optical-through-UV spectrum to those of dynamically confirmed quiescent BHs further supports X9 being a stellar-mass BH in quiescence, which would make it the fourth BH candidate detected in a Galactic GC to date. While the optical magnitude implies that the orbital period should be  $< 7 \text{ h}$  (consistent with a lower main-sequence donor star), the high X-ray luminosity of  $10^{33} \text{ erg s}^{-1}$  and the absence of strong H  $\alpha$  emission suggest that the system could be ultracompact, with an orbital period of order 25 min. Differentiating between these two possibilities would require broad-band optical spectroscopy.

## ACKNOWLEDGEMENTS

JCAMJ thanks Paul Hancock for assistance with the AEGEAN fitting package and Joe Callingham for useful discussions regarding CVs. We thank the anonymous referee for helpful and constructive comments. The ATCA is part of the Australia Telescope National Facility which is funded by the Commonwealth of Australia for operation as a National Facility managed by CSIRO. This work was supported by the NSF through grant AST-1308124. JCAMJ is the recipient of an Australian Research Council Future Fellowship (FT140101082), and also acknowledges support from an Australian Research Council Discovery Grant (DP120102393). COH and GRS acknowledge funding from NSERC Discovery Grants,

and COH is also supported by an Ingenuity New Faculty Award and an Alexander von Humboldt Fellowship. This research has made use of NASA's Astrophysics Data System, and also of the PYTHON packages APLPY (an open-source plotting package for PYTHON hosted at <http://aplpy.github.com>) and ASTROPY (a community-developed core PYTHON package for Astronomy; Astronomy Collaboration 2013).

## REFERENCES

- Abada-Simon M., Lecacheux A., Bastian T. S., Bookbinder J. A., Dulk G. A., 1993, *ApJ*, 406, 692
- Archibald A. M. et al., 2015, *ApJ*, 807, 62
- Armas Padilla M., Wijnands R., Degenaar N., Muñoz-Darias T., Casares J., Fender R. P., 2014, *MNRAS*, 444, 902
- Astropy Collaboration, 2013, *A&A*, 558, A33
- Auriere M., Le Fevre O., Terzan A., 1984, *A&A*, 138, 415
- Auriere M., Koch-Miramond L., Ortolani S., 1989, *A&A*, 214, 113
- Baglio M. C., Mainetti D., D'Avanzo P., Campana S., Covino S., Russell D. M., Shahbaz T., 2014, *A&A*, 572, A99
- Bahramian A. et al., 2014, *ApJ*, 780, 127
- Bahramian A., Heinke C. O., Degenaar N., Chomiuk L., Wijnands R., Strader J., Ho W. C. G., Pooley D., 2015, *MNRAS*, 452, 3475
- Barnard R., Garcia M. R., Primini F., Murray S. S., 2014, *ApJ*, 791, 33
- Bassa C. G. et al., 2014, *MNRAS*, 441, 1825
- Bastian T. S., Dulk G. A., Channugam G., 1988, *ApJ*, 324, 431
- Beccari G., De Marchi G., Panagia N., Pasquini L., 2014, *MNRAS*, 437, 2621
- Benacquista M. J., Downing J. M. B., 2013, *Living Rev. Relativ.*, 16, 4
- Benz A. O., Güdel M., 1989, *A&A*, 218, 137
- Benz A. O., Fuerst E., Kiplinger A. L., 1983, *Nature*, 302, 45
- Bogdanov S. et al., 2015, *ApJ*, 806, 148
- Bond H. E., White R. L., Becker R. H., O'Brien M. S., 2002, *PASP*, 114, 1359
- Bradley C. K., Hynes R. I., Kong A. K. H., Haswell C. A., Casares J., Gallo E., 2007, *ApJ*, 667, 427
- Brassington N. J. et al., 2012, *ApJ*, 755, 162
- Breen P. G., Heggie D. C., 2013, *MNRAS*, 432, 2779
- Camilo F., Lorimer D. R., Freire P., Lyne A. G., Manchester R. N., 2000, *ApJ*, 535, 975
- Casares J., Charles P. A., Naylor T., 1992, *Nature*, 355, 614
- Casares J., Charles P. A., Naylor T., Pavlenko E. P., 1993, *MNRAS*, 265, 834
- Channugam G., Dulk G. A., 1982, *ApJ*, 255, L107
- Charles P. A., Jones D. C., Naylor T., 1986, *Nature*, 323, 417
- Chomiuk L., Strader J., Maccarone T. J., Miller-Jones J. C. A., Heinke C., Noyola E., Seth A. C., Ransom S., 2013, *ApJ*, 777, 69
- Clark G. W., 1975, *ApJ*, 199, L143
- Coppejans D. L., K rding E. G., Miller-Jones J. C. A., Rupen M. P., Knigge C., Sivakoff G. R., Groot P. J., 2015, *MNRAS*, 451, 3801
- Corbel S., Nowak M. A., Fender R. P., Tzioumis A. K., Markoff S., 2003, *A&A*, 400, 1007
- Corbel S., Coriat M., Brocksopp C., Tzioumis A. K., Fender R. P., Tomsick J. A., Buxton M. M., Bailyn C. D., 2013, *MNRAS*, 428, 2500
- de Martino D. et al., 2010, *A&A*, 515, A25
- de Martino D. et al., 2013, *A&A*, 550, A89
- Deller A. T. et al., 2012, *ApJ*, 756, L25
- Deller A. T. et al., 2015, *ApJ*, 809, 13
- Edmonds P. D., Gilliland R. L., Heinke C. O., Grindlay J. E., 2003a, *ApJ*, 596, 1177
- Edmonds P. D., Gilliland R. L., Heinke C. O., Grindlay J. E., 2003b, *ApJ*, 596, 1197
- Eracleous M., Horne K., 1996, *ApJ*, 471, 427
- Fender R. P., Russell D. M., Knigge C., Soria R., Hynes R. I., Goad M., 2009, *MNRAS*, 393, 1608
- Freire P. C., Camilo F., Kramer M., Lorimer D. R., Lyne A. G., Manchester R. N., D'Amico N., 2003, *MNRAS*, 340, 1359
- Froning C. S. et al., 2011, *ApJ*, 743, 26
- Gallo E., Fender R. P., Pooley G. G., 2003, *MNRAS*, 344, 60
- Gallo E., Fender R. P., Hynes R. I., 2005, *MNRAS*, 356, 1017
- Gallo E., Fender R. P., Miller-Jones J. C. A., Merloni A., Jonker P. G., Heinz S., Maccarone T. J., van der Klis M., 2006, *MNRAS*, 370, 1351
- Gallo E., Homan J., Jonker P. G., Tomsick J. A., 2008, *ApJ*, 683, L51
- Gallo E., Miller B. P., Fender R., 2012, *MNRAS*, 423, 590
- Gallo E. et al., 2014, *MNRAS*, 445, 290
- Garcia M. R., McClintock J. E., Narayan R., Callanan P., Barret D., Murray S. S., 2001, *ApJ*, 553, L47
- Giersz M., Heggie D. C., 2011, *MNRAS*, 410, 2698
- Gnedin O. Y., Maccarone T. J., Psaltis D., Zepf S. E., 2009, *ApJ*, 705, L168
- Gonzaga S., Hack W., Fruchter A., Mack J., eds, 2012, *The DrizzlePac Handbook*, *HST Data Handbook*. STScI, Baltimore, MD
- Greisen E. W., 2003, in Heck A., ed., *Information Handling in Astronomy: Historical Vistas*. Kluwer, Dordrecht, p. 109
- Grindlay J. E., Heinke C., Edmonds P. D., Murray S. S., 2001, *Science*, 292, 2290
- Grindlay J. E., Camilo F., Heinke C. O., Edmonds P. D., Cohn H., Lugger P., 2002, *ApJ*, 581, 470
- Guillot S., Rutledge R. E., Brown E. F., Pavlov G. G., Zavlin V. E., 2009, *ApJ*, 699, 1418
- Hancock P. J., Murphy T., Gaensler B. M., Hopkins A., Curran J. R., 2012a, *MNRAS*, 422, 1812
- Hancock P. J., Murphy T., Gaensler B. M., Hopkins A., Curran J. R., 2012b, *Astrophysics Source Code Library*, record ascl:1212.009
- Hannikainen D. C., Hunstead R. W., Campbell-Wilson D., Sood R. K., 1998, *A&A*, 337, 460
- Harris W. E., 1996, *AJ*, 112, 1487
- Harris W. E., Harris G. L. H., Alessi M., 2013, *ApJ*, 772, 82
- Hasinger G., Johnston H. M., Verbunt F., 1994, *A&A*, 288, 466
- Heggie D. C., Giersz M., 2014, *MNRAS*, 439, 2459
- Heinke C. O., Grindlay J. E., Lugger P. M., Cohn H. N., Edmonds P. D., Lloyd D. A., Cool A. M., 2003, *ApJ*, 598, 501
- Heinke C. O., Grindlay J. E., Edmonds P. D., 2005a, *ApJ*, 622, 556
- Heinke C. O., Grindlay J. E., Edmonds P. D., Cohn H. N., Lugger P. M., Camilo F., Bogdanov S., Freire P. C., 2005b, *ApJ*, 625, 796
- Heinke C. O., Cohn H. N., Lugger P. M., 2009, *ApJ*, 692, 584
- Heinke C. O., Ivanova N., Engel M. C., Pavlovskii K., Sivakoff G. R., Cartwright T. F., Gladstone J. C., 2013, *ApJ*, 768, 184
- Hertz P., Grindlay J. E., 1983, *ApJ*, 275, 105
- Hill A. B. et al., 2011, *MNRAS*, 415, 235
- Homan J., Fridriksson J. K., Jonker P. G., Russell D. M., Gallo E., Kuulkers E., Rea N., Altamirano D., 2013, *ApJ*, 775, 9
- Howell J. H., Guhathakurta P., Gilliland R. L., 2000, *PASP*, 112, 1200
- Hynes R. I., Robinson E. L., 2012, *ApJ*, 749, 3
- Ivanova N., Chaichenets S., Fregeau J., Heinke C. O., Lombardi J. C., jr, Woods T. E., 2010, *ApJ*, 717, 948
- Joseph T. D., Maccarone T. J., Kraft R. P., Sivakoff G. R., 2015, *MNRAS*, 447, 1460
- Kimmig B., Seth A., Ivans I. I., Strader J., Caldwell N., Anderton T., Gregersen D., 2015, *AJ*, 149, 53
- King A. R., 1993, *MNRAS*, 260, L5
- Kneivitt G., Wynn G. A., Vaughan S., Watson M. G., 2014, *MNRAS*, 437, 3087
- Knigge C., Zurek D. R., Shara M. M., Long K. S., 2002, *ApJ*, 579, 752
- Knigge C., Dieball A., Maiz Apell niz J., Long K. S., Zurek D. R., Shara M. M., 2008, *ApJ*, 683, 1006
- K rding E., Rupen M., Knigge C., Fender R., Dhawan V., Templeton M., Muxlow T., 2008, *Science*, 320, 1318
- K rding E. G., Knigge C., Tzioumis T., Fender R., 2011, *MNRAS*, 418, L129
- Kulkarni S. R., Hut P., McMillan S., 1993, *Nature*, 364, 421
- Licquia T. C., Newman J. A., 2015, *ApJ*, 806, 96
- Linares M. et al., 2014, *MNRAS*, 438, 251
- Liu Q. Z., van Paradijs J., van den Heuvel E. P. J., 2007, *A&A*, 469, 807
- Lu T.-N., Kong A. K. H., 2011, *ApJ*, 729, L25
- Maccarone T. J., 2004, *MNRAS*, 351, 1049

- Maccarone T. J., 2005, MNRAS, 360, L30
- Maccarone T., Knigge C., 2007, Astron. Geophys., 48, 5.12
- Maccarone T. J., Kundu A., Zepf S. E., Rhode K. L., 2007, Nature, 445, 183
- Maccarone T. J., Kundu A., Zepf S. E., Rhode K. L., 2011, MNRAS, 410, 1655
- Maccarone T. J. et al., 2015, preprint ([arXiv:1501.02769](https://arxiv.org/abs/1501.02769))
- McClintock J. E., Remillard R. A., 2006, in Lewin W. H. G., van der Klis M., eds, Compact Stellar X-Ray Sources. Cambridge Univ. Press, Cambridge, p. 157
- McClintock J. E., Narayan R., Garcia M. R., Orosz J. A., Remillard R. A., Murray S. S., 2003, ApJ, 593, 435
- McClintock J. E., Narayan R., Rybicki G. B., 2004, ApJ, 615, 402
- McConnell D., Ables J. G., 2000, MNRAS, 311, 841
- McConnell D., Deacon R., Ables J. G., 2001, PASA, 18, 136
- Mackey A. D., Wilkinson M. I., Davies M. B., Gilmore G. F., 2008, MNRAS, 386, 65
- McLaughlin D. E., Anderson J., Meylan G., Gebhardt K., Pryor C., Minniti D., Phinney S., 2006, ApJS, 166, 249
- McMullin J. P., Waters B., Schiebel D., Young W., Golap K., 2007, in Shaw R. A., Hill F., Bell D. J., eds, ASP Conf. Ser. Vol. 376, Astronomical Data Analysis Software and Systems XVI. Astron. Soc. Pac., San Francisco, p. 127
- Manchester R. N., Hobbs G. B., Teoh A., Hobbs M., 2005, AJ, 129, 1993
- Marsh T. R., Robinson E. L., Wood J. H., 1994, MNRAS, 266, 137
- Mason P. A., Gray C. L., 2007, ApJ, 660, 662
- Meintjes P. J., Venter L. A., 2005, MNRAS, 360, 573
- Menou K., Esin A. A., Narayan R., Garcia M. R., Lasota J.-P., McClintock J. E., 1999, ApJ, 520, 276
- Menou K., Hameury J.-M., Lasota J.-P., Narayan R., 2000, MNRAS, 314, 498
- Meyer-Hofmeister E., 2004, A&A, 423, 321
- Migliari S., Fender R. P., 2006, MNRAS, 366, 79
- Migliari S. et al., 2010, ApJ, 710, 117
- Miller-Jones J. C. A., Jonker P. G., Maccarone T. J., Nelemans G., Calvelo D. E., 2011, ApJ, 739, L18
- Miller-Jones J. C. A., Sivakoff G. R., Knigge C., K rding E. G., Templeton M., Waagen E. O., 2013, Science, 340, 950
- Morscher M., Umbreit S., Farr W. M., Rasio F. A., 2013, ApJ, 763, L15
- Morscher M., Pattabiraman B., Rodriguez C., Rasio F. A., Umbreit S., 2015, ApJ, 800, 9
- Narayan R., Yi I., 1994, ApJ, 428, L13
- Nelemans G., Jonker P. G., Marsh T. R., van der Klis M., 2004, MNRAS, 348, L7
- Papitto A. et al., 2013, Nature, 501, 517
- Papitto A., de Martino D., Belloni T. M., Burgay M., Pellizzoni A., Possenti A., Torres D. F., 2015, MNRAS, 449, L26
- Paresce F., de Marchi G., Ferraro F. R., 1992, Nature, 360, 46
- Patruno A. et al., 2014, ApJ, 781, L3
- Patterson J., 1979, ApJ, 234, 978
- Pavelin P. E., Spencer R. E., Davis R. J., 1994, MNRAS, 269, 779
- Plotkin R. M., Gallo E., Jonker P. G., 2013, ApJ, 773, 59
- Pooley D. et al., 2003, ApJ, 591, L131
- Portegies Zwart S. F., McMillan S. L. W., 2000, ApJ, 528, L17
- Pryor C., Meylan G., 1993, in Djorgovski S. G. Meylan G., eds, ASP Conf. Ser. Vol. 50, Structure and Dynamics of Globular Clusters. Astron. Soc. Pac., San Francisco, p. 357
- Rappaport S., Dewey D., Levine A., Macri L., 1994, ApJ, 423, 633
- Ratti E. M. et al., 2012, MNRAS, 423, 2656
- Roberts T. P. et al., 2012, ApJ, 760, 135
- Rutledge R. E., Bildsten L., Brown E. F., Pavlov G. G., Zavlin V. E., 2002, ApJ, 578, 405
- Salaris M., Held E. V., Ortolani S., Gullieuszik M., Momany Y., 2007, A&A, 476, 243
- Sault R. J., Teuben P. J., Wright M. C. H., 1995, in Shaw R., Payne H. E., Hayes J. J. E., eds, ASP Conf. Ser. Vol. 77, Astronomical Data Analysis Software and Systems IV. Astron. Soc. Pac., San Francisco, p. 433
- Shih I. C., Kundu A., Maccarone T. J., Zepf S. E., Joseph T. D., 2010, ApJ, 721, 323
- Sigurdsson S., Hernquist L., 1993, Nature, 364, 423
- Sippel A. C., Hurley J. R., 2013, MNRAS, 430, L30
- Spitzer L., Jr, 1969, ApJ, 158, L139
- Strader J., Chomiuk L., Maccarone T. J., Miller-Jones J. C. A., Seth A. C., 2012a, Nature, 490, 71
- Strader J., Chomiuk L., Maccarone T. J., Miller-Jones J. C. A., Seth A. C., Heinke C. O., Sivakoff G. R., 2012b, ApJ, 750, L27
- Thorstensen J. R., Armstrong E., 2005, AJ, 130, 759
- van Haften L. M., Nelemans G., Voss R., Wood M. A., Kuijpers J., 2012, A&A, 537, A104
- Verbunt F., Hasinger G., 1998, A&A, 336, 895
- Wang Z., Archibald A. M., Thorstensen J. R., Kaspi V. M., Lorimer D. R., Stairs I., Ransom S. M., 2009, ApJ, 703, 2017
- Webb N. A., Servillat M., 2013, A&A, 551, A60
- Webb N. A., Serre D., Gendre B., Barret D., Lasota J.-P., Rizzi L., 2004, A&A, 424, 133
- Williams R. E., 1980, ApJ, 235, 939
- Wilson W. E. et al., 2011, MNRAS, 416, 832
- Witham A. R. et al., 2006, MNRAS, 369, 581
- Woodley K. A. et al., 2012, AJ, 143, 50
- Wright A. E., Stewart R. T., Nelson G. J., Slee O. B., Cropper M., 1988, MNRAS, 231, 319
- Wu Y. X., Yu W., Li T. P., Maccarone T. J., Li X. D., 2010, ApJ, 718, 620
- Wynn G. A., King A. R., Horne K., 1995, in Buckley D. A. B., Warner B., eds, ASP Conf. Ser. Vol. 85, Magnetic Cataclysmic Variables. Astron. Soc. Pac., San Francisco, p. 196
- Zepf S. E., Maccarone T. J., Bergond G., Kundu A., Rhode K. L., Salzer J. J., 2007, ApJ, 669, L69
- Zepf S. E. et al., 2008, ApJ, 683, L139

This paper has been typeset from a  $\text{\TeX}/\text{\LaTeX}$  file prepared by the author.