



UvA-DARE (Digital Academic Repository)

Chemical study of intermediate-mass (IM) Class 0 protostars: CO depletion and N₂H⁺ deuteration

Alonso-Albi, T.; Fuente, A.; Crimier, N.; Caselli, P.; Ceccarelli, C.; Johnstone, D.; Planesas, P.; Rizzo, J.R.; Wyrowski, F.; Tafalla, M.; Lefloch, B.; Maret, S.; Dominik, C.

DOI

[10.1051/0004-6361/201014317](https://doi.org/10.1051/0004-6361/201014317)

Publication date

2010

Document Version

Final published version

Published in

Astronomy & Astrophysics

[Link to publication](#)

Citation for published version (APA):

Alonso-Albi, T., Fuente, A., Crimier, N., Caselli, P., Ceccarelli, C., Johnstone, D., Planesas, P., Rizzo, J. R., Wyrowski, F., Tafalla, M., Lefloch, B., Maret, S., & Dominik, C. (2010). Chemical study of intermediate-mass (IM) Class 0 protostars: CO depletion and N₂H⁺ deuteration. *Astronomy & Astrophysics*, 518, A52. <https://doi.org/10.1051/0004-6361/201014317>

General rights

It is not permitted to download or to forward/distribute the text or part of it without the consent of the author(s) and/or copyright holder(s), other than for strictly personal, individual use, unless the work is under an open content license (like Creative Commons).

Disclaimer/Complaints regulations

If you believe that digital publication of certain material infringes any of your rights or (privacy) interests, please let the Library know, stating your reasons. In case of a legitimate complaint, the Library will make the material inaccessible and/or remove it from the website. Please Ask the Library: <https://uba.uva.nl/en/contact>, or a letter to: Library of the University of Amsterdam, Secretariat, Singel 425, 1012 WP Amsterdam, The Netherlands. You will be contacted as soon as possible.

UvA-DARE is a service provided by the library of the University of Amsterdam (<https://dare.uva.nl>)

Chemical study of intermediate-mass (IM) Class 0 protostars

CO depletion and N₂H⁺ deuteration

T. Alonso-Albi¹, A. Fuente¹, N. Crimier², P. Caselli³, C. Ceccarelli², D. Johnstone^{4,5}, P. Planesas^{1,6}, J. R. Rizzo⁷,
F. Wyrowski⁸, M. Tafalla¹, B. Lefloch², S. Maret², and C. Dominik⁹

¹ Observatorio Astronómico Nacional (OAN, IGN), Apdo 112, 28803 Alcalá de Henares, Spain
e-mail: t.alonso@oan.es

² Laboratoire d'Astrophysique, Observatoire de Grenoble, BP 53, 38041 Grenoble Cedex 9, France

³ School of Physics & Astronomy, E.C. Stoner Building, The University of Leeds, Leeds LS2 9JT, UK

⁴ Department of Physics & Astronomy, University of Victoria, Victoria, BC, V8P 1A1, Canada

⁵ National Research Council of Canada, Herzberg Institute of Astrophysics, 5071 West Saanich Road, Victoria, BC, V9E 2E7, Canada

⁶ Joint ALMA Observatory, El Golf 40, Las Condes, Santiago, Chile

⁷ Centro de Astrobiología (CSIC/INTA), Laboratory of Molecular Astrophysics, Ctra. Ajalvir km. 4, 28850, Torrejón de Ardoz, Spain

⁸ Max-Planck-Institut für Radioastronomie, Auf dem Hügel 69, 53121 Bonn, Germany

⁹ Anton Pannekoek Astronomical Institute, University of Amsterdam, PO Box 94249, 1090 GE Amsterdam, The Netherlands

Received 24 February 2010 / Accepted 16 April 2010

ABSTRACT

Aims. We are carrying out a physical and chemical study of the protostellar envelopes in a representative sample of IM Class 0 protostars. In our first paper we determined the physical structure (density-temperature radial profiles) of the protostellar envelopes. Here, we study the CO depletion and N₂H⁺ deuteration.

Methods. We observed the millimeter lines of C¹⁸O, C¹⁷O, N₂H⁺ and N₂D⁺ towards the protostars using the IRAM 30m telescope. Based on these observations, we derived the C¹⁸O, N₂H⁺ and N₂D⁺ radial abundance profiles across their envelopes using a radiative transfer code. In addition, we modeled the chemistry of the protostellar envelopes.

Results. All the C¹⁸O 1→0 maps are well fit when assuming that the C¹⁸O abundance decreases inwards within the protostellar envelope until the gas and dust reach the CO evaporation temperature, ≈20–25 K, where the CO is released back to the gas phase. The N₂H⁺ deuterium fractionation in Class 0 IMs is [N₂D⁺]/[N₂H⁺] = 0.005–0.014, two orders of magnitude higher than the elemental [D/H] value in the interstellar medium, but a factor of 10 lower than in prestellar clumps. Chemical models account for the C¹⁸O and N₂H⁺ observations if we assume the CO abundance is a factor of ~2 lower than the canonical value in the inner envelope. This could be the consequence of the CO being converted into CH₃OH on the grain surfaces prior to the evaporation and/or the photodissociation of CO by the stellar UV radiation. The deuterium fractionation is not fitted by chemical models. This discrepancy is very likely caused by the simplicity of our model that assumes spherical geometry and neglects important phenomena like the effect of bipolar outflows and UV radiation from the star. More important, the deuterium fractionation is dependent on the ortho-to-para H₂ ratio, which is not likely to reach the steady-state value in the dynamical time scales of these protostars.

Key words. ISM: abundances – ISM: clouds – stars: formation – circumstellar matter

1. Introduction

Intermediate-mass young stellar objects (IMs) share many characteristics with high-mass stars (clustering, PDRs) but their study presents an important advantage: many are located closer to the Sun ($d \leq 1$ kpc) and in less complex regions than massive star-forming regions. On the other hand, they are also important for understanding planet formation since Herbig Ae stars are the precursors of Vega-type systems. Despite this, IMs have been studied very little so far. A few works on HAEBE stars have been carried out at millimeter wavelengths (Fuente et al. 1998, 2002; Henning et al. 1998), but almost nothing has been done for their precursors, the Class 0 IM objects.

Chemistry has been successfully used to determine the physical structure and investigate the formation and evolution of low-mass YSOs. Chemical diagnostics have also been shown to be good indicators of the protostellar evolution in these objects (see e.g. Maret et al. 2004; Jørgensen et al. 2005). However, very few works deal with IMs. Fuente et al. (2005a) present

a chemical study of the envelopes of the Class 0 IM protostar NGC 7129–FIRS 2 and the young Herbig Be star LkH α 234. They find that the changes in the physical conditions of the envelope during its evolution from the Class 0 to the Class I stage (the envelope is dispersed and warmed up) strongly influence the molecular chemistry. The Class 0 object NGC 7129–FIRS 2 presented evidence of H¹³CO⁺ depletion. Moreover, the deuterium fractionation, measured as the DCO⁺/H¹³CO⁺ ratio, decreases by a factor of 4 from the Class 0 to the Herbig Be star, very likely owing to the increase in the kinetic temperature. Regarding the abundance of complex molecules, the beam-averaged abundances of CH₃OH and H₂CO increase from the Class 0 to the Herbig Be star. A hot core was also detected in NGC 7129–FIRS 2 (Fuente et al. 2005a,b). Although two objects are not enough to establish firm conclusions, these pioneering results suggest that chemistry is also a good indicator of the evolution of IMs.

We are carrying out a chemical study of a representative sample of IM Class 0 YSOs. This is the first systematic chemical

Table 1. Selected sample.

Object	RA(2000)	Dec(2000)	Lum. (L_{\odot})	d	
Serpens-FIRS 1	18:29:49.6	+01:15:20.6	33	230	Maps in $C^{17}O, C^{18}O, N_2H^+$ and N_2D^+
Cep E-mm	23:03:13.1	+61:42:26.0	100	730	Maps in $C^{17}O, C^{18}O, N_2H^+$ and N_2D^+
L1641 S3 MMS 1	05:39:55.9	-07:30:28.0	67	500	Strip in $C^{17}O$ and $C^{18}O$, maps in N_2H^+ and N_2D^+
IC1396N	21:40:41.7	+58:16:12.8	150	750	Maps in $C^{17}O, C^{18}O, N_2H^+$ and N_2D^+
CB3	00:28:42.7	+56:42:07.1	1000	2500	Maps in $C^{17}O, C^{18}O, N_2H^+$ and N_2D^+
OMC2-FIR4	05:35:26.7	-05:10:00.5	1000	450	Maps in $C^{17}O, C^{18}O, N_2H^+$ and N_2D^+
NGC 7129-FIRS 2	21:43:01.7	+66:03:23.6	500	1250	Strip in $C^{17}O$, maps in $C^{18}O, N_2H^+$ and N_2D^+
S140	22:19:18.1	+63:18:54.6	10^4	910	N_2H^+ and N_2D^+ maps
LkH α 234	21:43:06.8	+66:06:54.4	500	1250	Maps in $C^{18}O, N_2H^+$ and N_2D^+

study of IM Class 0 objects that has been carried out so far. Some properties like the temperature of the protostellar envelope and the clustering degree depend on the final stellar mass, so the results for low-mass stars cannot be directly extrapolated to intermediate-mass objects. In the first paper (Crimier et al. 2010, hereafter C10), we determined the physical structure (density-temperature radial profiles) by modeling the dust continuum emission. We now present the observations of the millimeter lines of $C^{18}O$, $C^{17}O$, N_2H^+ , and N_2D^+ in the same sample. Our goal is to investigate the CO depletion and N_2H^+ deuteration in these Class 0 YSOs. For comparison, we also include 2 Class I objects, LkH α 234, and S140.

2. Observational strategy

Our selection was made to have a representative sample of Class 0 IM YSOs, including targets with different luminosities ($40-10^3 L_{\odot}$) and evolutionary stages. An important complication in the study of massive stars is that they are located in complex regions and are therefore difficult to model. The targets in this sample were chosen to lie preferentially in isolated areas with respect to the 30 m telescope beam. We also selected sources for which continuum maps at submillimeter and/or millimeter wavelengths are available in order to be able to model their envelopes. The list of sources and their coordinates are shown in Table 1. To provide a comparison with Class I sources, we added S140 and LkH α 234 to the sample.

Most of the observations reported here were carried out with the IRAM 30 m telescope at Pico de Veleta (Spain) during three different observing periods in June 2004 in position switching mode. Our strategy was to first make long integration single-pointing observations towards the star position and then to make $96'' \times 96''$ maps around the center position. The maps were sampled with a spacing of $12''$ in the inner $48''$ regions and $24''$ outside. The only exceptions were L1641 S3 MMS1 and S140. In L1641 S3 MMS1, we only observed a radial strip in $C^{17}O$ and $C^{18}O$. We did not observe $C^{17}O$ and $C^{18}O$ maps in S140. A summary of the observations for each source is shown in Table 1, and the list of observed lines and the telescope characteristics is shown in Table 2. During the observations, lines of the same species were observed simultaneously using the multireceiver capability of the 30 m telescope. In this way, we minimized relative pointing and calibration errors. As backends we used in parallel an autocorrelator split into several parts providing a spectral resolution that was always better than ~ 78 kHz and a 1 MHz-channel-filter-bank. Examples of the single-pointing observations are shown in Figs. 1 and 2. The intensity scale is the main brightness temperature.

Observations of the N_2H^+ $J = 4 \rightarrow 3$ line (freq = 372.6725 GHz) were carried out towards Cep E-mm, IC 1396 N,

Table 2. Description of the observations.

Line	Freq. (MHz)	HPBW	η_{MB}	Tel
$C^{18}O$ 1 \rightarrow 0	109 782.2	22''	0.75	IRAM
$C^{18}O$ 2 \rightarrow 1	219 560.3	11''	0.55	IRAM
$C^{17}O$ 1 \rightarrow 0	112 359.3	22''	0.74	IRAM
$C^{17}O$ 2 \rightarrow 1	224 714.4	11''	0.54	IRAM
N_2H^+ 1 \rightarrow 0	93 173.2	26''	0.77	IRAM
N_2H^+ 4 \rightarrow 3	372 672.5	13''	0.63	JCMT
N_2D^+ 2 \rightarrow 1	154 217.1	16''	0.67	IRAM
N_2D^+ 3 \rightarrow 2	231 321.7	11''	0.52	IRAM

NGC 7129-FIRS 2, and L1641 S3 MMS1 using the JCMT telescope at the Mauna Kea (Hawaii). In all these sources, we carried out small maps of $75'' \times 75''$ with a spacing of $25''$, but the emission was only detected towards the star position (see Fig. 3). All the lines were observed with a spectral resolution of 0.488 MHz. The spectra of the $J = 4 \rightarrow 3$ line are shown in Fig. 3.

In this paper, we also use the $C^{18}O$, N_2H^+ and N_2D^+ data towards NGC 7129-FIRS 2 and LkH α 234, which has already been published by Fuente et al. (2005b).

3. Results

The spectra of the $C^{18}O$ 1 \rightarrow 0, $C^{17}O$ 1 \rightarrow 0, N_2H^+ 1 \rightarrow 0 and N_2D^+ 2 \rightarrow 1 lines towards the star position are shown in Figs. 1 and 2. The integrated intensity maps of the $C^{18}O$ 1 \rightarrow 0, N_2H^+ 1 \rightarrow 0, and N_2D^+ 2 \rightarrow 1 lines are shown in Figs. 4 (Class 0) and 5 (Class I). In all the Class 0 sources, the emission of the N_2H^+ 1 \rightarrow 0 line is compact and peaks towards the star position, revealing a dense core around the star. However, towards the Class I sources, the peaks of the N_2H^+ emission are offset from the far-IR source. For the Herbig Be star LkH α 234, the emission peak of the N_2H^+ 1 \rightarrow 0 line is located at an offset ($-6'', 18''$) from the star position (see Fuente et al. 2005a and Fig. 5). In S140, the N_2H^+ emission peaks in an arc-shaped feature surrounding the sources IRS 1, 2 and 3. In Class I sources, either the N_2H^+ is destroyed by the evaporated CO or the outflow, or the UV radiation from the star has already disrupted the parent core.

The emission in the $C^{18}O$ 1 \rightarrow 0 line usually presents a different morphology from that of N_2H^+ 1 \rightarrow 0 line. In CB3 and IC 1396N, the emission in the $C^{18}O$ line has an elongated shape, much more extended than that of N_2H^+ (see Fig. 4). In OMC2 FIR 4 and NGC 7129-FIRS 2, the emission of the $C^{18}O$ line surrounds the star position instead of having a maximum towards it (see also Fuente et al. 2005a). Only in the low-luminosity sources Serpens-FIRS 1 and Cep E-mm does the emission from the $C^{17}O$ and $C^{18}O$ lines peak at the star position and present a morphology similar to that of the N_2H^+ emission.

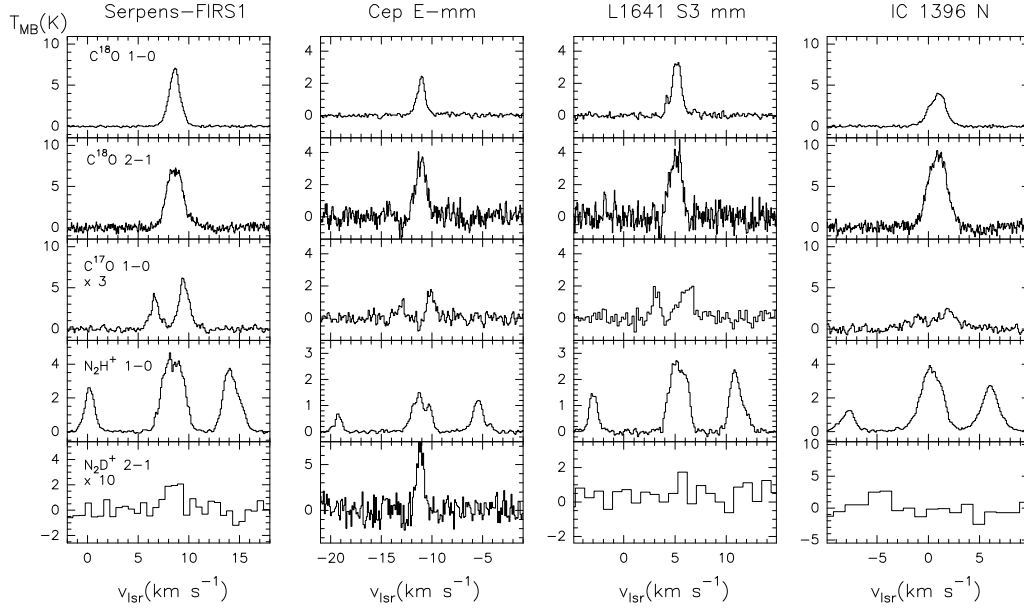


Fig. 1. Examples of the single-pointing observations towards the Serpens-FIRS 1, Cep E-mm, L1641 S3 MMS1, and IC 1396 N. All the spectra were observed with the 30 m telescope. The intensity scale is the main brightness temperature.

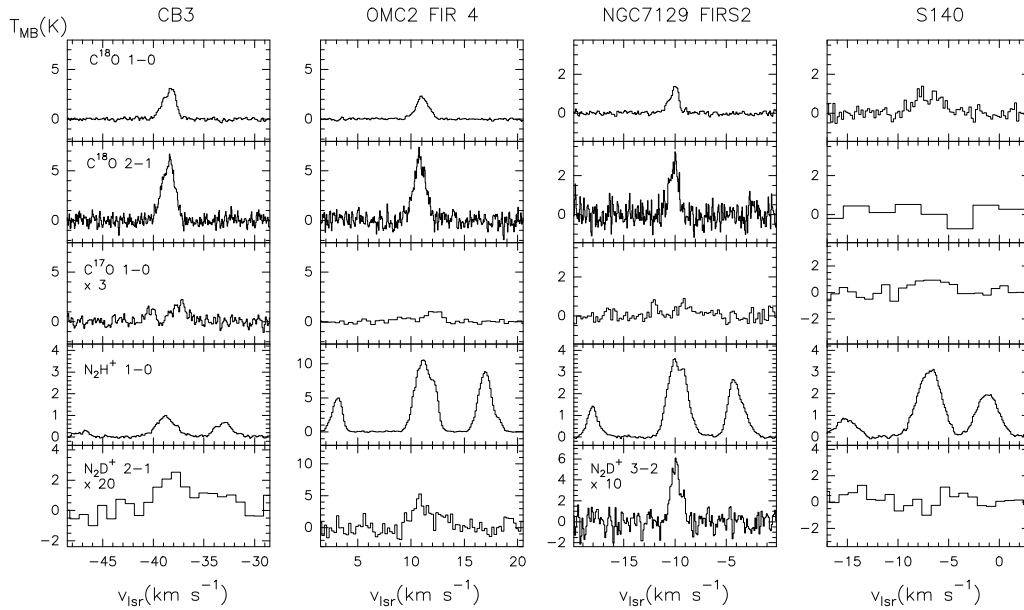


Fig. 2. The same as Fig. 1 for CB3, OMC2 FIR 4, NGC 7129-FIRS 2, and S140.

For the sources in which the signal-to-noise ratio of the N_2D^+ map is high enough, Serpens-FIRS 1 and NGC 7129 FIRS 2, we compared the N_2D^+ 2 \rightarrow 1 and N_2H^+ 1 \rightarrow 0 maps. In Serpens-FIRS 1, the N_2D^+ 2 \rightarrow 1 emission does not peak towards the star, but does in the case of NGC 7129-FIRS 2.

In Fig. 6, we show the mean integrated intensity emission of the $C^{18}O$ 1 \rightarrow 0, N_2H^+ 1 \rightarrow 0, and N_2D^+ 2 \rightarrow 1 lines in concentric rings around the protostar. In all the sources, the emission of the N_2H^+ 1 \rightarrow 0 line decreases outwards from the star. The radial profiles of the $C^{18}O$ 1 \rightarrow 0 line, however, greatly differ from one source to the next. The presumably youngest sources, OMC2 FIR 4 and NGC 7129-FIRS 2, show a flat profile. This is the expected picture when the CO abundance decreases towards the center, mainly because the molecules are frozen onto the grain surfaces. In Serpens-FIRS 1, Cep E-mm,

IC 1396 N, and CB3, the $C^{18}O$ 1 \rightarrow 0 emission decrease with the distance from the star, similar to N_2H^+ but with a less steep profile. Intense emission of the $C^{18}O$ 1 \rightarrow 0 line is detected at the edges of the protostar envelopes, which shows that a lower density envelope also contributes to the emission of this line. This envelope contribution is especially important for Serpens-FIRS 1. In fact, we must model the envelope contribution in order to fit the $C^{18}O$ 1 \rightarrow 0 emission from this protostellar core (see Appendix A1). One could interpret the different radial profiles of the $C^{18}O$ 1 \rightarrow 0 emission as an evolutionary trend, with the youngest protostars having flat profiles while the oldest have steep profiles. Given the complexity of these regions, however, one should be cautious and use multiple evolutionary tracers to define relative age. For instance, a lack of $C^{18}O$ emission towards the star position could come from CO depletion in

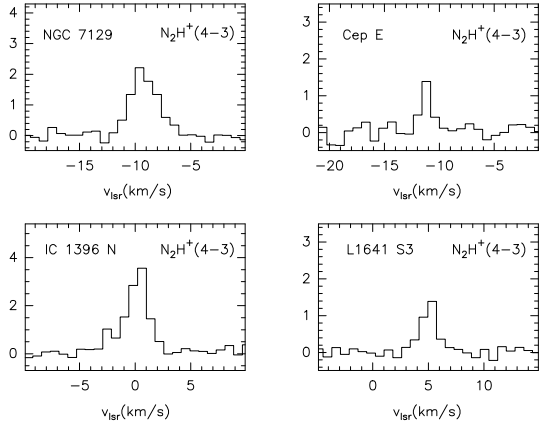


Fig. 3. Spectra of the N_2H^+ 4 \rightarrow 3 line towards NGC 7129–FIRS 2, Cep E–mm, IC 1396 N, and L1641 S3 MMS1.

the case of a very young object or to photodissociation for a borderline Class 0/I. The radial profiles of the N_2D^+ 2 \rightarrow 1 (3 \rightarrow 2 for NGC 7129–FIRS 2) are more uncertain because of the low S/N ratio of the maps.

4. LTE column densities

We have derived the $C^{18}O$ column densities using the rotation diagram method. This method gives an accurate estimate of the column density provided that the emission is optically thin, is thermalized, and arises from a homogeneous and isothermal slab. In the case of a density and temperature distribution, the derived column density represents an average value over the observational beam.

The excitation of $C^{18}O$ and $C^{17}O$ are very similar, and we have better signal-to-noise spectra for the more intense $C^{18}O$ lines. For this reason, we derived the $C^{17}O$ column density by assuming optically thin emission and the rotation temperature derived from the $C^{18}O$ data. The molecule N_2H^+ presents hyperfine splitting. This allows us to estimate the line opacity directly from the hyperfine line ratios. We derived the total N_2H^+ column density from the opacity of the N_2H^+ 1 \rightarrow 0 line, and assumed the rotation temperatures derived from N_2D^+ data when there was no N_2H^+ 4 \rightarrow 3 observations. The same rotation temperature was always used for both N_2H^+ and N_2D^+ . We assumed a beam filling factor of 1 for all the lines regardless of the observational beam size. This approach overestimates the rotation temperature when the emission is centrally peaked. In Table 3 we present the derived $C^{18}O$, $C^{17}O$, N_2H^+ , and N_2D^+ column densities. We also show the $N(C^{18}O)/N(C^{17}O)$ (hereafter R_1) and the $N(N_2D^+)/N(N_2H^+)$ (hereafter R_2) ratios. For the whole sample, we obtain a value for R_1 around 3.3 ± 0.3 , the expected value for optically thin emission. In the worst case, $R_1 = 2.5$, the correction to the $C^{18}O$ column density because of the opacity is only a factor ~ 1.3 . Thus, opacity effects are not important in our $C^{18}O$ column density estimates.

4.1. N_2D^+ and N_2H^+

The deuterium fractionation of N_2H^+ (R_2) strongly depends on the CO depletion factor and the gas temperature (Caselli et al. 2002; Ceccarelli & Dominik 2005; Daniel et al. 2007). In our sample of IM Class 0 protostars, we derive values of R_2 ranging from 0.005 to 0.014. These values are 3 orders of magnitude higher than 10^{-5} , the elemental value in the interstellar medium

(Oliveira et al. 2003). Nevertheless, the R_2 values are a factor of 10 lower than those found in prestellar clumps by Crapsi et al. (2005). According to the values of R_2 , we can classify our sources into two groups: (i) highly deuterated sources that have values of $R_2 > 0.01$ and (ii) moderately deuterated sources with $R_2 < 0.01$. Cep E–mm, CB3, and NGC 7129–FIRS 2 belong to the first group. Assuming that the $N(N_2D^+)/N(N_2H^+)$ ratio is a good gas temperature indicator, these protostars should be the coldest and very likely the youngest of our sample. We have to be cautious with CB3, however. Since this source is the most distant ($d = 2500$ pc), our single-pointing observations trace a larger fraction of the envelope. The sources Serpens–FIRS 1, IC 1396 N, OMC2–FIR 4, and S140 belong to the second group. S140 is a Class I YSO and IC 1396 N is considered a borderline Class 0/I YSO. The results are thus consistent with our interpretation of the objects in this group as being more evolved. In Serpens–FIRS 1, however, the N_2D^+ 1 \rightarrow 0 emission comes mainly from the lower density envelope and the ratio cannot be considered a tracer of the evolutionary stage of the protostar. OMC2 FIR 4 is also difficult to classify. The deuterium fractionation suggests an evolved object but the morphology of the $C^{18}O$ map is more consistent with a young Class 0 star. The peculiarity of this protostellar envelope has already been pointed out by Crimier et al. (2009). They find that the envelope of OMC2 FIR 4 is peculiarly flat and warm with a radial density power-law index of 0.6.

We present the N_2H^+ deuterium fractionation as a function of the $N(C^{18}O)/N(N_2H^+)$ ratio in Fig. 7. An excellent correlation between these two quantities is found in prestellar cores with the deuterium fractionation decreasing with increasing $N(C^{18}O)/N(N_2H^+)$ ratio (see Crapsi et al. 2005). This correlation is not valid for IM Class 0 protostars. As discussed in the following sections, this is due to the complexity of these intermediate mass star-forming regions. In prestellar cores the chemistry of these species is only driven by the CO depletion. In IMs, other phenomena like photodissociation and shocks are also playing important roles.

5. Radiative transfer model

We utilized a general ray-tracing radiative transfer code¹ to derive the fractional abundance profiles of $C^{18}O$, N_2H^+ and N_2D^+ across the envelopes. Assuming appropriate radial profiles for the temperature, density, molecular abundance, and turbulence velocity, this model calculated the brightness temperature distribution on the sky. The model map was then convolved with the telescope beam profile. The underlying source geometry was assumed to be a sphere, with the inner and outer radii, and temperature-density (T - n) profiles derived by C10. The size of the grid was set to 32×32 cells. The cells have different sizes along the line of sight to account for the different slopes in the density and temperature profiles. We used very small cells ($\lesssim 100$ AU) near the center, where the temperature and density gradients are highest. In the outer regions, the cells reach several thousand AU in size. The turbulent velocity was assumed to be fixed at 1.5 km s^{-1} , consistent with the linewidths of the observed lines. Finally, in each cell, the excitation temperature was calculated with the RADEX code (van der Tak et al. 2007), which uses the slab LVG approximation at each shell. We used

¹ The model is called DataCube and a link to install it is available upon request.

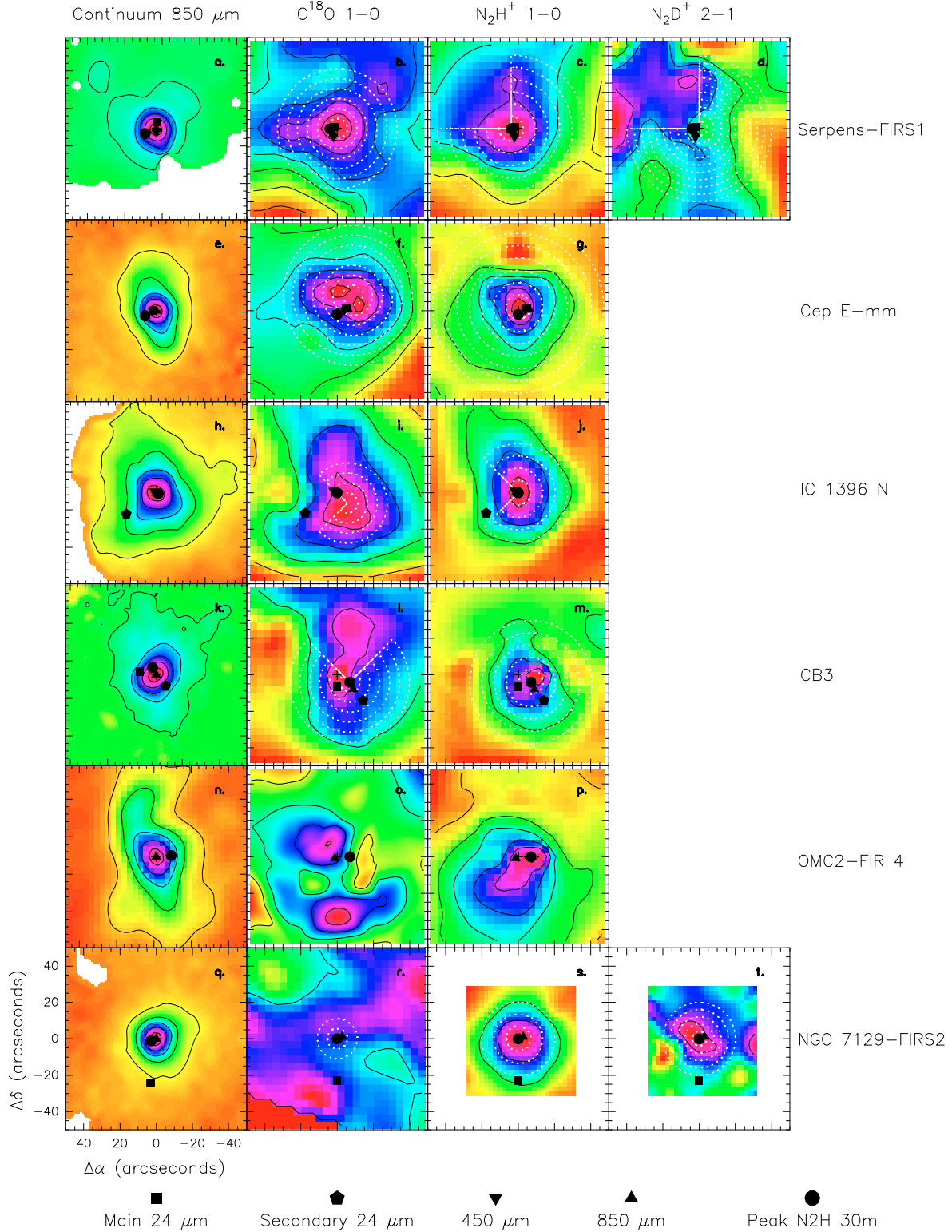


Fig. 4. Continuum maps at 850 μm from C10 (left column), and integrated intensity maps of the C^{18}O 1 \rightarrow 0, N_2H^+ 1 \rightarrow 0 and N_2D^+ 2 \rightarrow 1 (3 \rightarrow 2) in the case of NGC 7129-FIRS 2) lines towards the observed Class 0 IMs. In each panel, we have drawn the area and the number of rings considered in our model fitting. The emission peak at several wavelengths is shown with different marks. Contour levels starts at 3σ level and are **a)** 0.5, 1.6, 2.7, 3.8, 4.9, and 5.4 Jy/beam; **b)** 1 to 9 K km s^{-1} by steps of 1 K km s^{-1} ; **c)** 3 to 9 K km s^{-1} by steps of 3 K km s^{-1} ; **d)** 0.5 to 1.5 K km s^{-1} by steps of 0.5 K km s^{-1} ; **e)** 0.16, 0.49, 0.81, 1.14, and 1.46 Jy/beam; **f)** 0.5 to 3 K km s^{-1} by steps of 0.5 K km s^{-1} ; **g)** 0.5 to 2.5 K km s^{-1} by steps of 0.5 K km s^{-1} ; **h)** 0.3, 0.9, 1.5, 2.1, and 2.8 Jy/beam; **i)** 2.0 to 8.0 K km s^{-1} by steps of 2.0 K km s^{-1} ; **j)** 3.0 to 9.0 K km s^{-1} by steps of 3.0 K km s^{-1} ; **k)** 0.07, 0.20, 0.33, 0.46, and 0.59 Jy/beam; **l)** 2.0, 4.0 K km s^{-1} ; **m)** 1.0 to 3.0 K km s^{-1} by steps of 1.0 K km s^{-1} ; **n)** 1.0, 2.5, 4.0, 5.5, and 7.0 Jy/beam; **o)** 0.5 to 3.5 K km s^{-1} by steps of 0.5 K km s^{-1} ; **p)** 4.0 to 24.0 K km s^{-1} by steps of 4.0 K km s^{-1} ; **q)** 2.1, 6.3, 10.6, 14.8, and 19.0 Jy/beam; **r)** 2.0 K km s^{-1} ; **s)** 3.0, 6.0 K km s^{-1} ; **t)** 0.5 K km s^{-1} .

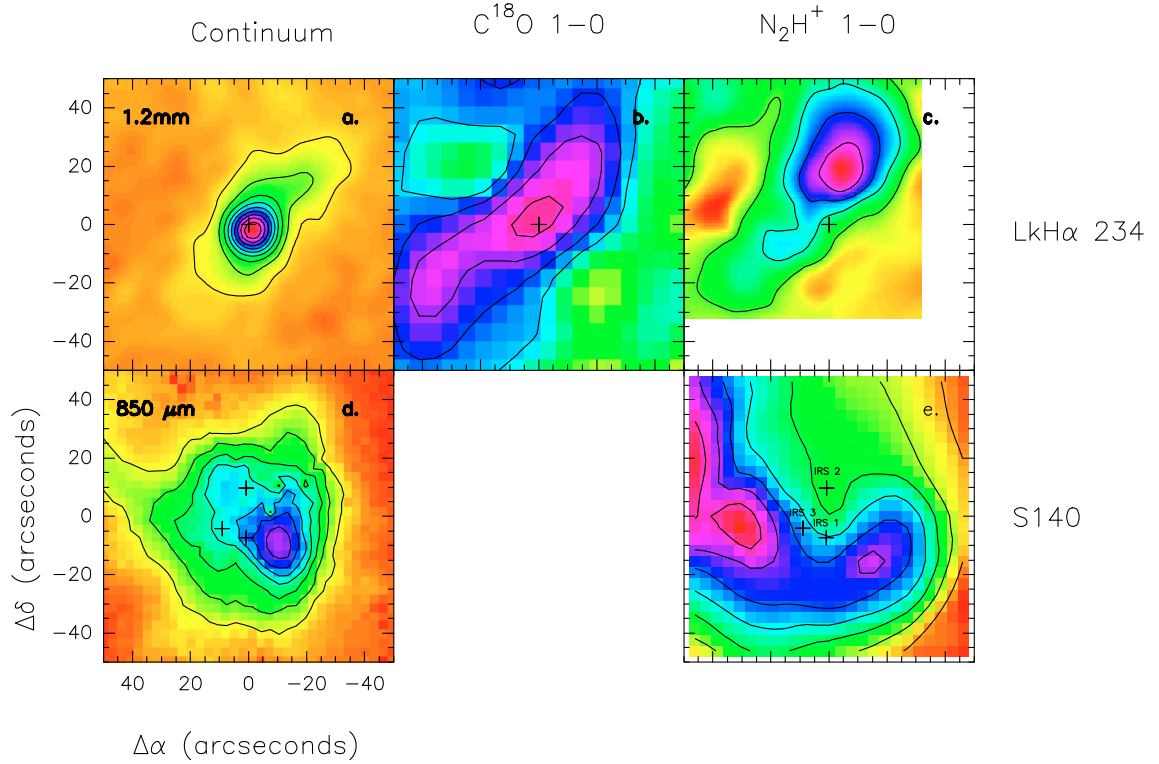


Fig. 5. Integrated intensity maps of the C^{18}O 1 \rightarrow 0 and N_2H^+ 1 \rightarrow 0 lines towards LkH α 234 and S140. Contour levels are: **a)** 0.07, 0.15, 0.23, 0.31, 0.39, 0.46, 0.54, 0.62, and 0.69 Jy/beam; **b)** 2 to 5 K km s $^{-1}$ by steps of 1 K km s $^{-1}$; **c)** 1 to 5 K km s $^{-1}$ in steps of 1 K km s $^{-1}$; **d)** 1 to 8.0 Jy/beam in steps of 1 Jy/beam ; **e)** 3 to 21 K km s $^{-1}$ in steps of 3 K km s $^{-1}$.

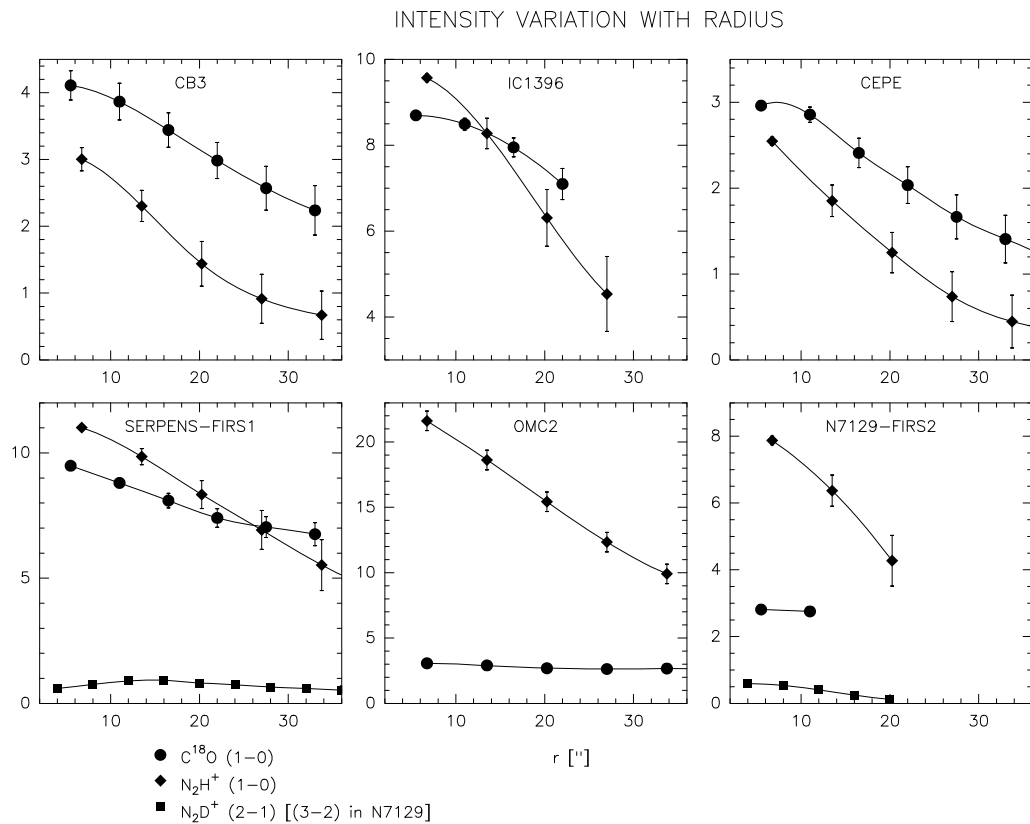


Fig. 6. Radially integrated intensity profiles of the C^{18}O 1 \rightarrow 0, N_2H^+ 1 \rightarrow 0, and N_2D^+ 2 \rightarrow 1 (3 \rightarrow 2 for NGC 7129–FIRS 2) lines in our sample of Class 0 IMs. Each point represents the mean value of the line integrated emission in a ring of a given radius. The errors are the rms of the line integrated emission in the ring. The step between two consecutive points, which is equal to the size of each ring, is equivalent to 1/4 of the beam at each frequency.

Table 3. LTE column densities.

Source	T_r (K)	$N(\text{C}^{18}\text{O})$ (cm^{-2})	$N(\text{C}^{17}\text{O})$ (cm^{-2})	R_1^*	T_r (K)	$N(\text{N}_2\text{H}^+)$ (cm^{-2})	$N(\text{N}_2\text{D}^+)$ (cm^{-2})	R_2^*
Serpens-FIRS 1	11	8.2×10^{15}	3.2×10^{15}	2.6	11 ^a	7.7×10^{13}	3.4×10^{11}	0.004
Cep E-mm	15	2.5×10^{15}	7.6×10^{14}	3.3	9 ^b	1.4×10^{13}	5.8×10^{11}	0.04
L1641 S3 MMS 1	10	3.2×10^{15}	1.3×10^{15}	2.5	8 ^b	3.6×10^{13}	$<2.1 \times 10^{11}$	<0.006
IC1396N	25	1.1×10^{16}	3.7×10^{15}	3.0	10 ^b	4.1×10^{13}	$<4.1 \times 10^{11}$	<0.01
CB3	14	5.2×10^{15}	1.6×10^{15}	3.3	6 ^a	1.2×10^{13}	1.0×10^{12}	0.08
OMC2-FIR4	22	4.8×10^{15}	1.2×10^{15}	3.4	22 ^a	2.0×10^{14}	8.7×10^{11}	0.004
NGC 7129–FIRS 2	23	1.9×10^{15}	6.9×10^{14}	2.8	13 ^c	3.8×10^{13}	5.4×10^{11}	0.014
S140	50 ^c	1.0×10^{16}	2.7×10^{15}	3.7	50 ^d	1.2×10^{14}	$<4.5 \times 10^{11}$	<0.004
LkH α 234 ^b					22	1.0×10^{13}	$<2.3 \times 10^{11}$	<0.02

Notes. ^(*) $R_1 = N(\text{C}^{18}\text{O})/N(\text{C}^{17}\text{O})$, $R_2 = N(\text{N}_2\text{D}^+)/N(\text{N}_2\text{H}^+)$.

^(a) Rotation temperature derived from our N_2D^+ observations.

^(b) Rotation temperature derived from our N_2H^+ observations.

^(c) From Fuente et al. (2005a).

^(d) From Minchin et al. (1995).

Table 4. Temperature-density (T - n) profiles from Crimier et al. (2010).

Source	CB3 mm	Cep- E mm	IC 1396 N BIMA2	NGC 7129 FIRS 2	Serpens FIRS 1
RA(J2000)	00:28:42.1	23:03:12.7	21:40:41.8	21:43:01.5	18:29:49.8
Dec(J2000)	56:41:59.4	61:42:27.4	58:16:13.5	66:03:25.0	01:15:18.4
Dust optical depth at $100 \mu\text{m}$, τ_{100}	5.8	5.0	1.4	2.3	3.0
Density power law index, α	2.2	1.9	1.2	1.4	1.5
Envelope thickness, $r_{\text{out}}/r_{\text{i}}$	400	500	630	180	200
Inner envelope radius, r_{in} , (AU)	260	70	50	100	30
Outer envelope radius, r_{out} , (AU)	103 000	35 800	29 600	18 600	5900
Radius at $T_{\text{dust}} = 100 \text{ K}$, $r_{100 \text{ K}}$, (AU)	700	223	180	373	102
H_2 density at $r_{100 \text{ K}}$, n_0 , (cm^{-3})	7.5×10^7	2.0×10^8	4.3×10^7	4.4×10^7	2.2×10^8
Envelope mass, M_{env} , (M_{\odot})	120	35	90	50	5.0

the collisional rates provided by the LAMDA database² (Schöier et al. 2005). For N_2D^+ , we used the same collisional rates as for N_2H^+ .

With these assumptions, we searched for the best fit on every source and molecule observed. The fitting process consisted of averaging the observed and modeled fluxes in concentric rings around the center position using GILDAS software. The center position was selected to be the continuum emission peak at $850 \mu\text{m}$. The radius of the first ring was set to $HPBW/4$, and incremented by the same amount in consecutive rings. As a first step we searched for the best fit using a constant abundance. Since this approach seldom produced good fits, we next searched for the best fit using radial power functions and step functions. These functions were not selected arbitrarily but were selected to mimic the predictions of chemical models. The step function accounts for the abrupt sublimation of the CO ices thanks to the increase in the dust temperature going inwards, whereas the power-law profile accounts for a smoother change in the abundance of the species. The angular resolution of our observations ($\sim 16''$ – $27''$ depending on the frequency, i.e. $\sim 16\,000$ – $27\,000$ AU at a distance of 1000 pc) prevents us from tracing the inner region ($R < \text{a few } 1000 \text{ AU}$) of the protostellar envelope. For this reason, we assume a constant abundance in the inner part.

We fit the integrated intensity maps of the C^{18}O $1 \rightarrow 0$, N_2H^+ $1 \rightarrow 0$, N_2H^+ $4 \rightarrow 3$, and N_2D^+ $2 \rightarrow 1$ lines, when possible.

The maps of the C^{18}O $2 \rightarrow 1$ and C^{17}O $1 \rightarrow 0$ and $2 \rightarrow 1$ lines are of less quality so we did not use them in our fits. Some sources show deviations from the spherical symmetry because of the contribution of the surrounding molecular cloud (Serpens–FIRS 1, CB3) or because of the cavity excavated by the outflow (IC 1396 N). In these cases we masked part of the map to avoid this contamination in the rings. A short description of each source and the individual details about the modeling are given in Appendix A. The areas masked are shown in Fig. 4, and the abundance profiles obtained from the model are listed in Table 5. We did not model the Class I sources S140 and LkH α 234. The modeling of OMC2 FIR 4 will be the subject of a forthcoming paper.

6. Limitations of our model: CO evaporation temperature

The model used here is not a reliable predictor of the chemical and physical properties within the inner envelope for several reasons. First of all we only considered the low- J rotational molecular lines. The emission of these transitions arises mainly from the outer envelope. This fact, together with the limited spatial resolution of our single dish observations, prevent us from determining the variation in the abundance in the inner envelope. Additionally, in our modeling we use the n - T profiles derived by C10. These profiles are a reasonable approximation for the outer envelope but are relatively unconstrained in the inner region. Some parameters, like the inner radius of the envelope and the dust temperature at this radius, are thus poorly determined.

² LAMDA database is available at <http://www.strw.leidenuniv.nl/~moldata/>.

Table 5. Abundance profiles derived from the observations.

Serpens-FIRS 1	X_0	R_0 (AU)	X_1	R_1 (AU)	X_2	rms (K km s ⁻¹)	Diameter('')/HPBW('')
C ¹⁸ O	1.4×10^{-7}	2000	$<7 \times 10^{-9}$	6000	1.1×10^{-7}	0.27	2.3
N ₂ H ⁺	4.0×10^{-10}	3000	$<3 \times 10^{-11}$	6000	2.5×10^{-10}	0.29	1.9
N ₂ D ⁺		$<2 \times 10^{-12}$		6000	1.9×10^{-11}	0.6	3.1
T_{ev}^* (K)	20						
n_{ev}^* (cm ⁻³)	2.4×10^6						
Cep E-mm	X_0	R_0 (AU)	X_1	R_1 (AU)	X_2	rms (K km s ⁻¹)	
C ¹⁸ O	6.0×10^{-8}	3500		$1.1 \times 10^{-7} \times (r/35\,800)$		0.24	4.4
N ₂ H ⁺	2.4×10^{-10}	6000		$2.5 \times 10^{-10} \times (r/35\,800)$		0.28	3.7
N ₂ D ⁺			7.0×10^{-12}				6.1
T_{ev} (K)	20						
n_{ev} (cm ⁻³)	1.0×10^6						
IC 1396 N	X_0	R_0 (AU)	X_1	R_1 (AU)	X_2	rms (K km s ⁻¹)	
C ¹⁸ O	6.0×10^{-8}	5500		$1.25 \times 10^{-7} \times (r/29\,600)$		0.24	3.5
N ₂ H ⁺	4.2×10^{-10}	10 000	1.0×10^{-11}	15 000	1.8×10^{-10}	0.50	3.0
N ₂ D ⁺			$<7 \times 10^{-12}$				4.9
T_{ev} (K)	19						
n_{ev} (cm ⁻³)	7.0×10^5						
CB3	X_0	R_0 (AU)	X_1	R_1 (AU)	X_2	rms (K km s ⁻¹)	
C ¹⁸ O	1.3×10^{-7}	25 000	$<3.0 \times 10^{-8}$	60 000	9.0×10^{-7}	0.24	3.7
N ₂ H ⁺			6.5×10^{-10}			0.45	3.1
N ₂ D ⁺			3.0×10^{-11}				5.1
T_{ev} (K)	15						
n_{ev} (cm ⁻³)	3.0×10^4						
NGC 7129-FIRS 2	X_0	R_0 (AU)	X_1	R_1 (AU)	X_2	rms (K km s ⁻¹)	
C ¹⁸ O			4.0×10^{-8}			0.4	1.4
N ₂ H ⁺			4.7×10^{-10}			0.4	1.1
N ₂ D ⁺	$<3.0 \times 10^{-12}$	9000	4.5×10^{-11}	11 000	$<3.0 \times 10^{-12}$	0.13	2.7

Notes. (*) Temperature and density at the CO evaporation radius.

Another important source of uncertainty is the degeneracy of the solutions. For instance, in the case of C¹⁸O we can obtain similar results by varying the molecular abundance in the inner region (X_0) or the CO evaporation radius (R_0), as long as the line is optically thin and the number of molecules in the beam remains constant. Here we discuss the impact of this degeneracy in the derived CO evaporation radius.

We ran a grid of models for Cep E-mm, IC 1396 N, and CB3. These are the sources in which the ratio between the angular diameter of the envelope and the HPBW of the telescope is greatest, so we are more sensitive to the spatial variations of the chemical abundances. In all these models, we assume that the C¹⁸O abundance profile is $X = X_0$ for radii less than the evaporation radius, R_0 , and $X = X_0 \times (R/R_{\text{out}})^\alpha$ for radii larger than R_0 . For each value of X_0 , we fit R_0 and α . X_0 is the un-depleted C¹⁸O abundance, R_0 the evaporation radius, and α measures the gradient in the C¹⁸O abundance due to depletion. The canonical abundance of C¹⁸O in principle depends on the Galactocentric distance (DGC). Following Wilson & Matteucci (1992), the CO abundance is given by

$$X_{\text{CO}} = 9.5 \times 10^5 \exp(1.105 - (0.13 \times \text{DGC}(\text{kpc}))). \quad (1)$$

Following Wilson & Rood (1994), the oxygen isotope ratio ¹⁶O/¹⁸O depends on DGC according to the relationship $^{16}\text{O}/^{18}\text{O} = 58.8 \times \text{DGC}(\text{kpc}) + 37.1$. At the distance of the Sun, 8.5 kpc, $X_{\text{C}^{18}\text{O}} = 1.7 \times 10^{-7}$. This is an average value,

so there may be local effects. In our models we varied X_0 from 1×10^{-7} to 4×10^{-7} , the range of X_0 values that we consider reasonable. For each value of X_0 , we varied R_0 and α to find the best fit. In Fig. 8 we show the results of our models for Cep E. The best fit is $X_0 = 1 \times 10^{-7}$, $R_0 = 2510$ AU, $\alpha = 1$ with rms = 0.37 K km s⁻¹. We consider that the models with rms values departing by a factor of less than 1.3 from the minimum value are still acceptable. Following this criterion, we have two different families of solutions. Assuming $X_0 = 1 \times 10^{-7}$, the best fit is obtained with $\alpha \sim 1$ and $R_0 \sim 2100$ –3100 AU. Assuming $X_0 = 2 \times 10^{-7}$, we have reasonably good solutions with $\alpha \sim 2$ and $R_0 \sim 2200$ –3200 AU. We have not found any acceptable solution for higher values of X_0 . The evaporation radius of C¹⁸O is thus 2600 ± 600 AU. These radii correspond to dust temperatures of 20–25 K. Interestingly, we would have a better fit to the observations (rms = 0.24 K km s⁻¹) if we allowed the C¹⁸O abundance in the inner region to fall below 1×10^{-7} . This is the solution we show in Table 5. We do not reject this solution because there are several physical reasons that the CO abundance could be lower in the inner envelope. First of all, C¹⁸O could have been photodissociated in the regions very close to the recently formed star. Alternatively, part of the CO could have been transformed into CH₃OH on the icy mantles, and the CO abundance once evaporated would then be different from the initial value. However, given the large uncertainty in the physical structure of the inner parts of the envelope, we cannot draw any conclusion.

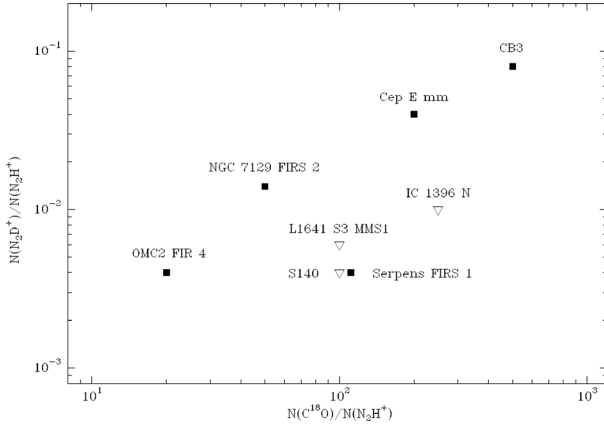


Fig. 7. Deuterium fractionation of $N_2H^+(R_2)$ vs. the $N(C^{18}O)/N(N_2H^+)$ ratio in the studied YSOs. Inverted empty triangles are upper limits for L1641 S3 MMS1, IC 1396 N, and S140, where we did not detect the $N_2D^+ 2 \rightarrow 1$ line.

In Fig. 9 we show the results for IC 1396 N. The best fit is $X_0 = 1 \times 10^{-7}$, $R_0 = 2000$ AU, and $\alpha = 0.5$ with $rms = 0.36$ K km s $^{-1}$. We consider that the models with values of $rms < 0.5$ are acceptable. Following this criterion, we only find solutions for $X_0 = 1 \times 10^{-7}$ and $R_0 < 3000$ AU; i.e., the CO evaporation temperature should be >23 K. Again, the fit can be significantly improved if values of X_0 lower than 1×10^{-7} are considered. This is similar to the case of Cep E. Finally, in Fig. 10, we show the same grid of models for CB3. The best fit is for $X_0 = 4 \times 10^{-7}$, $R_0 = 4000$ AU, and $\alpha = 0.76$ with $rms = 2.0$ K km s $^{-1}$, which corresponds to a CO evaporation temperature of ~ 30 K. However, this is not a good fit. In fact, we obtain a much better solution when assuming a step function and $T_{ev} \sim 15$ K (see Table 5).

For Serpens-FIRS 1 and NGC 7129 FIRS2, the protostars are barely resolved by our single-dish observations. In addition, the contribution of the surrounding cloud is very significant. For these reasons, we did not carry out a study similar to what is described above. We looked only for abundance profiles that fit our observations and are consistent with the behavior predicted by chemical models (see Table 5). In these two cases, we can fit the observations when assuming that the CO is evaporated at temperatures around 20–25 K. We conclude, therefore, that our $C^{18}O$ observations towards the Class 0 stars are better fit assuming CO evaporation temperatures of 20–25 K that are consistent with the CO being bound in a CO-CO matrix.

The fits to the N_2H^+ and N_2D^+ emission profiles have been done by hand. For N_2H^+ we tried two options: (i) constant N_2H^+ abundance and (ii) an abundance profile with a radial variation similar to that of $C^{18}O$. Option (ii) follows the expectation that the N_2H^+ abundance is strongly dependent on the CO abundance. In the case of CB3 and NGC 7129 FIRS 2, we are able to fit the N_2H^+ observations by assuming a constant abundance. For the rest of sources, the N_2H^+ observations are better fit by assuming that the N_2H^+ is depleted in the cold regions similarly to CO.

One expects an annular distribution for the N_2D^+ abundance, with the maximum N_2D^+ abundance in the region with the greatest CO depletion. The morphology observed in the integrated intensity map of the $N_2D^+ 2 \rightarrow 1$ line towards Serpens-FIRS 1 suggests that the N_2D^+ emission is dominated by the foreground molecular cloud. For this reason we selected a one-step function with a constant abundance inside and outside the protostellar core. In the case of NGC 7129–FIRS 2, we detected a

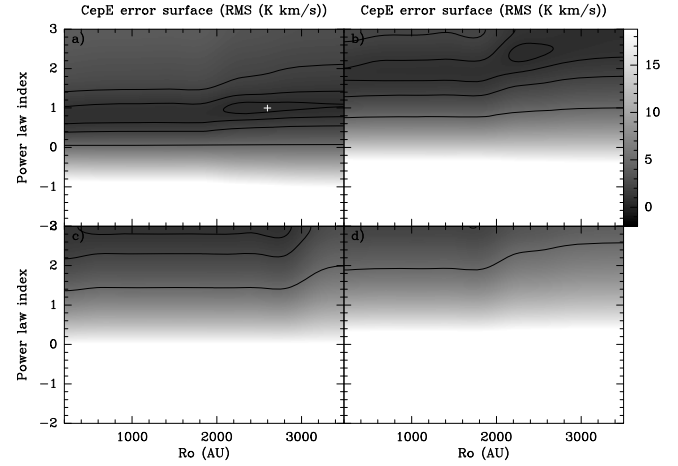


Fig. 8. Plots of the rms, defined as $\Sigma(I_{\text{model}} - I_{\text{obs}})^2$ for the grid of models run to reproduce the $C^{18}O$ emission in Cep E-mm. The $C^{18}O$ abundance is assumed to be $X = X_0$ for radii less than R_0 , and $X = X_0 \times (R/R_{\text{out}})^\alpha$ for radii larger than R_0 . The values of X_0 are 1.0×10^{-7} (panel a), 2.0×10^{-7} (panel b), 3.0×10^{-7} (panel c), and 4.0×10^{-7} (panel d). The solution with the lowest rms, 0.37, is indicated by a cross. We consider acceptable solutions those with rms less than 0.5. Contour levels are 0.5, 1, 2, and 5 K km s $^{-1}$.

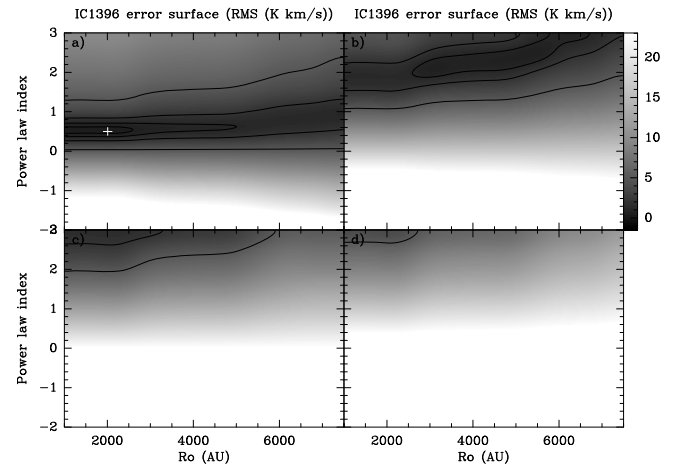


Fig. 9. The same as Fig. 8 for IC 1396 N. The solution with the lowest rms, 0.36, is indicated by a cross. We consider acceptable solutions those with rms less than 0.5. Contour levels are 0.5, 1, 2, and 5 K km s $^{-1}$.

clump of $N_2D^+ 3 \rightarrow 2$ emission towards the star. However, interferometric observations show that on scales of a few 1000 AU, there is a lack of emission towards the star (Fuente et al. 2005a). We thus fit the N_2D^+ emission assuming an annular abundance distribution.

7. Chemical model

The chemical composition was modeled with the simple chemical code originally described in Caselli et al. (2002), and updated following Caselli et al. (2008) with new measurements of the CO and N_2 binding energies (Collings et al. 2003; Öberg et al. 2005) and sticking coefficients (Bisschop et al. 2006), thermal desorption, and the detailed physical structure. The clouds are assumed to be spherically symmetric, with the density and temperature profiles derived from the dust continuum emission. An interpolation procedure has been included in the code in order to have smooth profiles. The chemical network contains the neutral

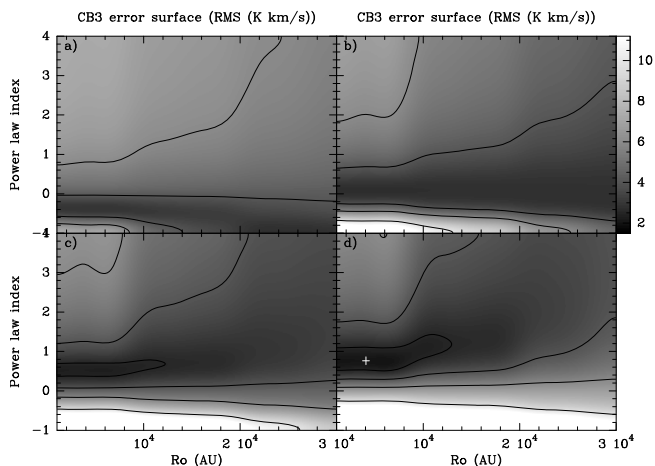


Fig. 10. The same as Fig. 8 for CB 3. The solution with the lowest rms, 2.5, is indicated by a cross. Contour levels are 2.5, 4, 6, and 10 K km s⁻¹.

species CO and N₂, which can freeze out onto dust grains and desorb owing to cosmic ray impulsive heating (as in Hasegawa & Herbst 1993) and by thermal evaporation (following Hasegawa et al. 1992). The initial abundances of CO and N₂ have been fixed to 9.5×10^{-5} (Frerking et al. 1982) and 2×10^{-5} , respectively. The abundances of molecular and atomic nitrogen are difficult to determine in dense cores, but recent works suggest low values in low-mass, star-forming regions: $X(\text{N}) = n(\text{N})/n(\text{H}_2) \lesssim 2 \times 10^{-6}$ (Hily-Blant et al. 2010), and $X(\text{N}_2) \sim 10^{-6}$ (Maret et al. 2006). Our adopted value is consistent with 25% of the total abundance of N ($n(\text{N})/n(\text{H}) = 7.9 \times 10^{-5}$, see Anders & Grevesse 1989) locked in N₂ and with the pseudo-time dependent models of Lee et al. (1996), after the chemistry reaches steady state. Although atomic oxygen can affect the amount of deuterium fractionation (see discussion in Caselli et al. 2002), no atomic oxygen is included in the code because of the large uncertainties associated with its value (see e.g. Caux et al. 1999 and Melnick & Bergin 2005). This issue is discussed further at the end of this section.

The abundances of the molecular ions (HCO⁺, N₂H⁺, H₃⁺, and all their deuterated forms) were calculated in terms of the instantaneous abundances of neutral species, assuming that the timescale for ion chemistry is much shorter than for freeze-out (Caselli et al. 2002). The rate coefficients are adopted from the UMIST database (<http://www.udfa.net>). For the proton-deuteron exchange reactions (such as H₃⁺ + HD → H₂D⁺ + H₂), we used the rates measured by Gerlich et al. (2002), which better fit the deuterium fractionation in low-mass Class 0 sources, as recently found by Emprechtinger et al. (2009). Hugo et al. (2009) have recently measured the proton-deuteron rate coefficients again, finding average values of total rates (for H₃⁺ and its deuterated isotopologues, the total rate refers to the average of multiple rates weighted according to the fraction of ortho and para forms; Sipilä et al. 2010) about 4–5 times more than those derived by Gerlich et al. (2002; see also Sipilä et al. 2010). Although this difference could affect our results by increasing the deuterium fractionation by a similar factor (thus worsening the comparison with observations), we decided not to include the new values because the nuclear spin variants of all H₃⁺ isotopologues and H₂ have not been distinguished in the current model. In fact, as Pagani et al. (1992) and Flower et al. (2004) showed, small temperature variations significantly alter the ortho-to-para ratio of H₂, which in turn strongly affects the D-fractionation (ortho-H₂ being more efficient than para-H₂ in driving back

the proton-deuteron exchange reactions thus decreasing the D-fractionation), even in the temperature regime between 9 and 20 K, where CO is mostly frozen onto dust grains (see also the discussion about the drop in ortho-H₂D⁺ column density at temperatures above 10 K in Caselli et al. 2008). Such temperature variations are definitely present in the envelopes of intermediate-mass Class 0 protostars (see also Emprechtinger et al. 2009), so that a simple increase in the rate coefficients without accounting for nuclear spin variants and, in particular, the possible increase in the H₂ ortho-to-para ratio may overestimate the D-fractionation calculated by our models. A more detailed chemical network is currently under development. The electron fraction has been computed using a simplified version of the reaction scheme of Umebayashi & Nakano (1990), where a generic molecular ion mH⁺ is formed via proton transfer with H₃⁺, and it is destroyed by dissociative recombination with electrons and recombination on grain surfaces (using rates from Draine & Sutin 1987). Dust grains follow a Mathis et al. (1977; MRN) size distribution, but the minimum size has been increased to 5×10^{-6} cm to simulate possible dust coagulation, as in the best-fit model of the prestellar core L1544 shown by Vastel et al. 2006 (see also Flower et al. 2005 and Bergin et al. 2006). The initial abundance of metals (assumed to freeze out with a rate similar to that of CO) is 10^{-6} (see McKee 1989).

The cosmic ray ionization rate is fixed at $\zeta = 3 \times 10^{-17}$ s⁻¹ (van der Tak & van Dishoeck 2000). The adopted CO binding energy is 1100 K, a weighted mean of the CO binding energy on icy mantles (1180 K; Collings et al. 2003) and CO mantles (885 K; Öberg et al. 2005), assuming that solid water is about four times more abundant than solid CO. The models are computed for envelope lifetimes of 10⁶ yr, although solutions do not appreciably change after $\approx 10^5$ yr.

In Figs. 11 to 14, we show the fits for Cep E-mm. We adopt this protostar as a fiducial example because it is the one with the best spatial sampling of the envelope, its geometry looks spherical, and the contribution of the surrounding molecular cloud is negligible. It is impossible to reproduce the observations towards Cep E-mm using the standard chemical model. With the standard model, i.e., assuming a CO binding energy of ~ 1100 K, we are able to reproduce the qualitative behavior of the C¹⁸O and N₂H⁺ emission (see Fig. 11), but the model reproduces the line integrated intensities poorly. The line intensity predictions are a factor of 2–4 higher than the observations (see Fig. 11). Increasing the CO binding energy (e.g. assuming that a large fraction of CO is trapped in water ice) does not improve the fit (see model 2 in Table 6 and Fig. 12).

The abundance profiles given in Table 5 suggest that the fit to the C¹⁸O emission would improve by lowering the CO abundance in the inner part of the core. As pointed out there, this low CO abundance has some physical justification. One possibility is that a significant fraction of CO is converted into CH₃OH on the grain surfaces before evaporation, in agreement with observations of solid methanol along the line of sight toward embedded young stellar objects (e.g. Boogert et al. 2008). We mimic this situation with model 3. In this model, only 10% of the CO is released back to the gas phase at the CO evaporation temperature. Another possibility is that CO is either destroyed by the stellar UV radiation and/or X-rays close to the star or transformed into more complex molecules via hot core chemistry. This case corresponds to our model 4, where only 10% of the CO survives when the temperature is higher than 100 K. The two models, 3 and 4, fit the C¹⁸O and N₂H⁺ emission better than the standard model (see Figs. 13 and 14), with model 3 being a slightly better fit to the Cep E-mm observations. Thus, we applied these most

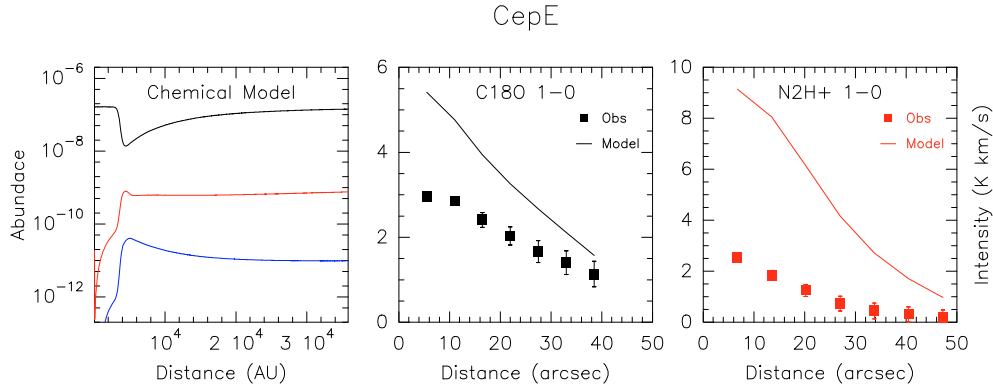


Fig. 11. *Left:* results of our chemical model for Cep E-mm assuming a binding energy of 1100 K (standard value, model 1). The $C^{18}O$ abundance is shown in black, N_2H^+ in red, and N_2D^+ in blue. *Center:* comparison between the predicted $C^{18}O$ 1 \rightarrow 0 line intensities (continuous line) and the observed values (filled squares). *Right:* same for N_2H^+ 1 \rightarrow 0.

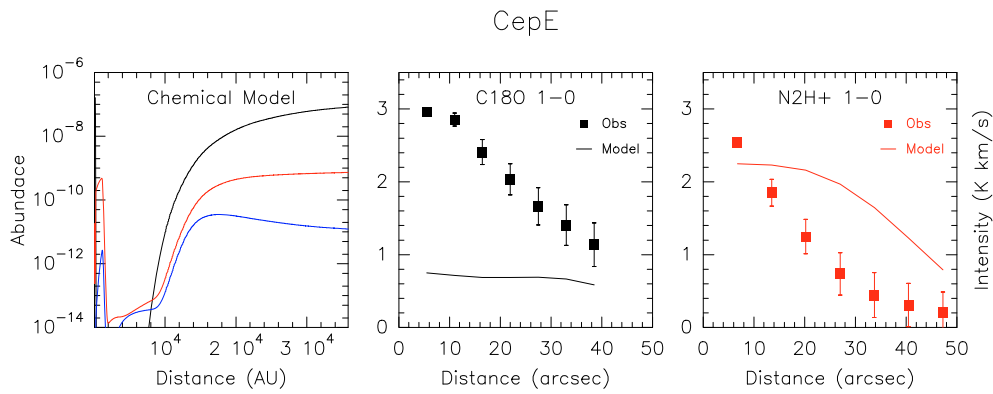


Fig. 12. The same as Fig. 11 for model 2.

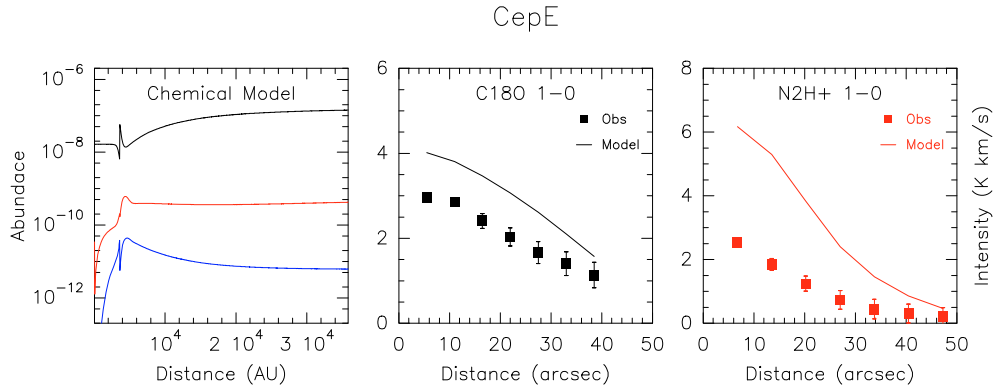


Fig. 13. The same as Fig. 11 for model 3.

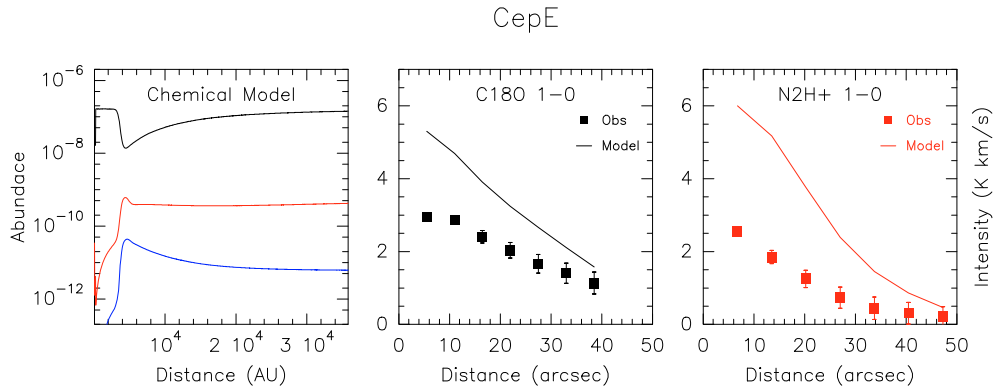


Fig. 14. The same as Fig. 11 for model 4.

Table 6. Model results.

Source	Model	CO Binding energy	$\chi_{\text{C}^{18}\text{O}}^a$	$\chi_{\text{N}_2\text{H}^+}$	$\chi_{\text{N}_2\text{D}^+}$	
Serpens–FIRS 1	Model 3	1100	4.37	3.89	4.52	only 10% of CO evaporated
	Model 4	1100	2.55	3.77	4.46	only 10% survives for $T > 100$ K
Cep E-mm	Model 1	1100	1.48	4.12	0.71	
	Model 2	5000	1.51	0.86	0.45	
	Model 3	1100	0.91	2.26	1.19	only 10% of CO evaporated
	Model 4	1100	1.42	2.19	1.12	only 10% survives for $T > 100$ K
IC 1396 N	Model 3	1100	2.95	4.45	>4.3	only 10% of CO evaporated
	Model 4	1100	1.79	4.35	>4.0	only 10% survives for $T > 100$ K
CB3	Model 3	1100	1.63	0.76	0.31	only 10% of CO evaporated
	Model 4	1100	1.24	0.86	0.51	only 10% survives for $T > 100$ K
NGC 7129–FIRS 2	Model 3	1100	0.97	1.29	2.05	only 10% of CO evaporated
	Model 4	1100	1.39	1.48	1.73	only 10% survives for $T > 100$ K

Notes. ^(a) χ is defined as $\chi = \sqrt{[\sum(I_{\text{model}} - I_{\text{obs}})^2]/N}$. Note that this is an absolute error and the comparison among values in different sources is not straightforward. See Figs. 11 to 18.

successful models, model 3 and 4, to all the other sources and have obtained reasonable fits (line integrated intensities fitted within a factor of 2) to the C^{18}O and N_2H^+ emission in all of them. For both IC 1396 N and Serpens–FIRS 1, model 4 gives a better fit, while model 3 is better for the rest.

While we obtain reasonable fits for C^{18}O and N_2H^+ , our models do not succeed in reproducing the N_2D^+ data towards Serpens–FIRS 1 and IC 1396 N. In fact, the chemical models predict intensities higher by a factor of ~ 10 than the observed intensities for these sources. All the considered models predict that the spatial distribution of N_2D^+ is similar to that of N_2H^+ and that the deuteration fraction $[\text{N}_2\text{D}^+]/[\text{N}_2\text{H}^+] \sim 0.01$ in most of the envelope. This is not true for our low-deuterated sources, Serpens–FIRS 1 and IC 1396 N, in which the $[\text{N}_2\text{D}^+]/[\text{N}_2\text{H}^+]$ ratio is a few 0.001. This discrepancy could have different origins. First of all, the models assume a spherical geometry. It is clear that bipolar outflows have excavated large cavities in these protostellar envelopes (see e.g. Fuente et al. 2009). The walls of these cavities are warmed by the stellar UV radiation and shocks. Moderate temperatures, UV radiation, and shocks would lower the abundance of N_2H^+ and change the $[\text{N}_2\text{D}^+]/[\text{N}_2\text{H}^+]$ ratio. In fact, the large linewidths observed ($\sim 1.5 \text{ km s}^{-1}$) are hard to maintain without shocks and dissipation. The role of UV radiation and shocks is expected to be greater in IM Class 0 objects than in low-mass ones.

This simple model ignores many other important parameters that could decrease the deuterium fractionation in warmer sources. These include (i) an increased abundance of atomic O in the gas phase, possibly coming from the release of water from the icy dust mantles. Atomic oxygen is an efficient destruction partner for all the H_3^+ isotopologues, and lowers the D-fractionation, as discussed by Caselli et al. (2002). (ii) The ortho-to-para H_2 ratio, which in systems out of equilibrium (such as free-falling) can exceed the steady-state value by more than an order of magnitude (Flower et al. 2006; Pagani et al. 2009). A larger fraction of ortho- H_2 leads to a lower D-fractionation, given that the more energetic ortho- H_2 can more easily drive the proton-deuteron exchange reactions (e.g. $\text{H}_3^+ + \text{HD} \rightarrow \text{H}_2\text{D}^+ + \text{H}_2$) backward and reduce the $\text{H}_2\text{D}^+/\text{H}_3^+$ abundance ratio (Gerlich et al. 2002). (iii) A higher ionization rate, ζ , which may be due to the presence of X-rays. A larger ζ implies a larger electron fraction and thus a higher dissociative recombination rates for molecular ions, including H_3^+ isotopologues (e.g. Caselli et al. 2008). (iv) The presence of small grains (in particular PAHs; see

discussion in Caselli et al. 2008, Sect. 5.1) may arise from the interaction of outflow lobes and UV radiation with the molecular envelope. The associated shocks will partially destroy dust grains along the way (e.g. Jones et al. 1996; Caselli et al. 1997; Guillet et al. 2009) and increase the surface area for recombination of molecular ions onto dust grains.

Because of the low angular resolution of the present observations, it is hard to disentangle the influences of the above parameters. Both more detailed observations and more comprehensive models are needed for a deeper understanding of the chemical and physical evolution of the envelopes surrounding young intermediate-mass stars.

8. Summary and conclusions

We carried out a study of the CO depletion and N_2H^+ deuteration in a sample of representative IM Class 0 protostars. Our results can be summarized as follows.

- We observed the millimeter lines of C^{18}O , C^{17}O , N_2H^+ , and N_2D^+ using the IRAM 30m telescope in a sample of 7 Class 0 and 2 Class I IM stars. We have found a clear evolutionary trend that differentiates Class 0 from Class I sources. While the emission of the $\text{N}_2\text{H}^+ 1 \rightarrow 0$ peaks towards the star position in Class 0 protostars, it surrounds the FIR sources in the case of Class I stars. This occurs because the recently formed star has heated and disrupted the parent core in the case of Class I objects. The deuterium fractionation, R_2 , is low, below a few 0.001 in all Class I sources. There is, however, a wide dispersal in the values of R_2 in Class 0 sources ranging from a few 0.001 to a few 0.01. This at least two orders of magnitude greater than the elemental value in the interstellar medium, although a factor of 10-100 lower than in prestellar clumps.

It is impossible, however, to establish an evolutionary trend among Class 0 sources based on simple parameters such as the average CO depletion and the average N_2H^+ deuterium fractionation. This stems from the complexity of these regions (multiplicity) and the limited angular resolution of our observations, which prevents us from tracing the inner regions of the envelope. Interferometric observations are required to provide a more precise picture of the evolutionary stage of these objects.

IC 1396

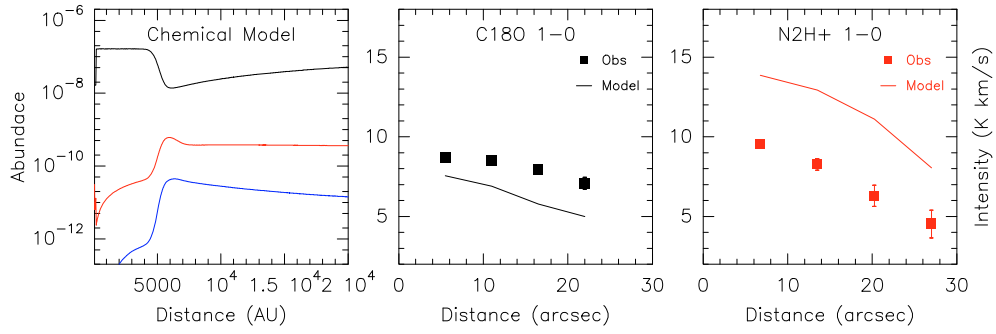


Fig. 15. The same as Fig. 11 for IC 1396 N and model 4.

CB3

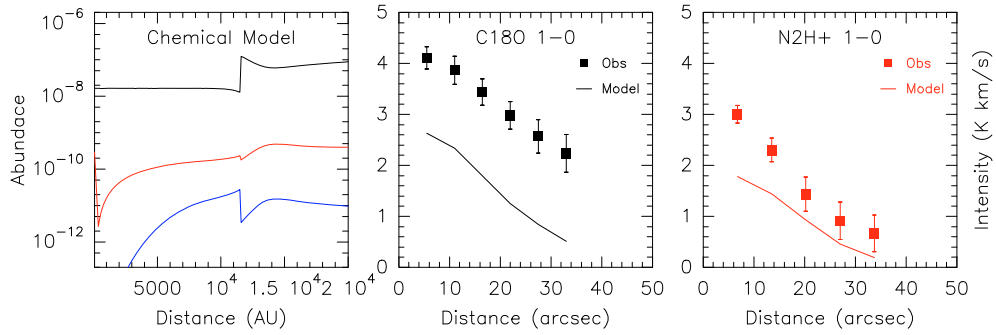


Fig. 16. The same as Fig. 11 for CB 3 and model 3.

N7129

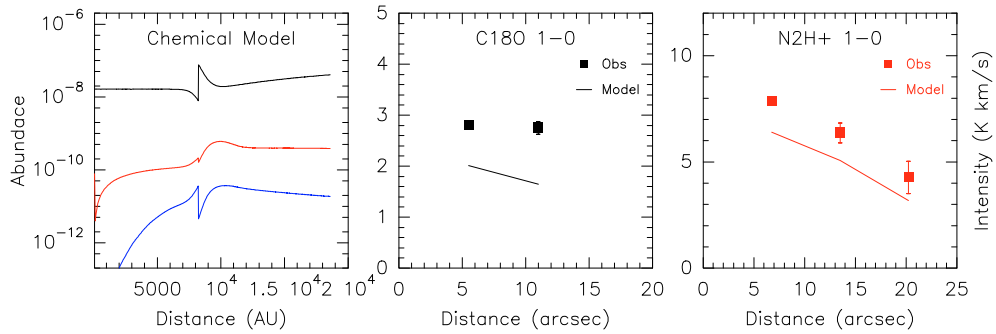


Fig. 17. The same as Fig. 11 for NGC 7129-FIRS 2 and model 3.

Serpens-Firs 1

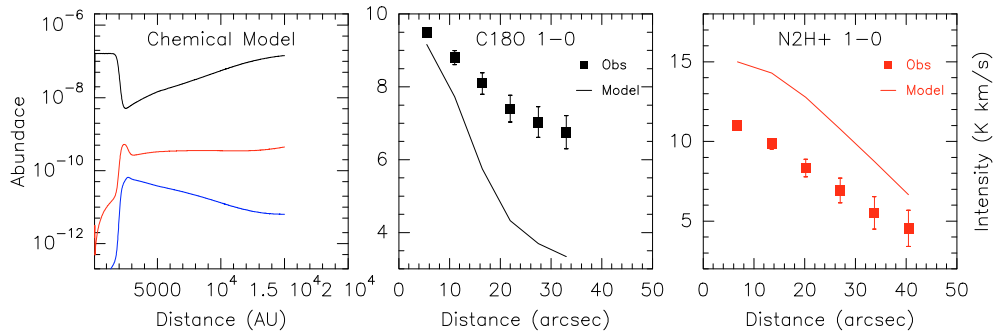


Fig. 18. The same as Fig. 11 for Serpens-FIRS 1 and model 3.

- We used a radiative transfer code to derive the $C^{18}O$, N_2H^+ , and N_2D^+ radial abundance profiles in 5 IM Class 0 stars. In particular, we fit the $C^{18}O$ $1\rightarrow 0$ maps by assuming that the $C^{18}O$ abundance decreases inwards within the protostellar envelope until the gas and dust reach the CO evaporation temperature, T_{ev} . Our observational data are better fit with values of $T_{ev} \sim 20\text{--}25$ K, consistent with the binding energy of 1100 K, which is the measured in the laboratory for a CO–CO matrix.
- We determined the chemistry of the protostellar envelopes using the model by Caselli et al. (2002). A spherical envelope and steady-state chemical model cannot account for the observations. We had to introduce modifications to better fit the $C^{18}O$ and N_2H^+ maps. In particular the CO abundance in the inner envelope seems to be lower than the canonical value. This could be due to the conversion of CO into CH_3OH on the grain surfaces, the photodissociation of CO by the stellar UV radiation, or even geometrical effects. Likewise, we have problems fitting the low values of the deuterium fractionation (\sim a few 0.001) measured for some Class 0 IMs. Several explanations have been proposed to account for this discrepancy.

Acknowledgements. This Paper was partially supported by MICINN, within the program CONSOLIDER INGENIO 2010, under grant “Molecular Astrophysics: The Herschel and ALMA Era – ASTROMOL” (ref.: CSD2009-00038)

Appendix A:

Below we discuss the details of the modeling for each individual source.

A.1. Serpens-FIRS 1

Serpens-FIRS 1, located near the center of the Serpens main core, is the most luminous object embedded in the cloud. Several continuum studies lead to its classification as a Class 0 source with a bolometric luminosity estimated to range from $46 L_{\odot}$ to $84 L_{\odot}$ (Harvey et al. 1984; Casali et al. 1993; Hurt & Barsony 1996; Larsson et al. 2000). The latest estimate of its luminosity (see Table 4) suggests that Serpens-FIRS 1 is on the low mass/IM borderline. Serpens-FIRS 1 drives a molecular outflow that is oriented at a position angle of 50° (Rodríguez et al. 1989). C10 modeled this source as a sphere with an outer radius of 5900 AU, $25.5''$ at the distance of Serpens. Convolution with the observational beams, one would expect a source diameter of $55''$, $57''$, and $53''$ for the $C^{18}O$ $1\rightarrow 0$, N_2H^+ $1\rightarrow 0$, and N_2D^+ $2\rightarrow 1$ maps, respectively. In our maps, the emission is much more extended ($>80''$), showing that the dense molecular cloud significantly contributes to the molecular emission (see also Fig. 6). To mimic the molecular cloud component, we increased the outer radius in the Crimier et al. profile. We assumed that the radius of the protostellar envelope is 15 000 AU, and the dust density and temperature smoothly vary between the last point of the Crimier et al. profile ($r = 5900$ AU, $n = 5 \times 10^5$ cm $^{-3}$, $T_d = 13$ K) and the values assumed at $r = 15$ 000 AU, which are $n = 1 \times 10^4$ cm $^{-3}$ and $T_d = 10$ K. This profile was used for our fitting.

The integrated intensity map of $C^{18}O$ cannot be fit with a constant abundance profile. Thus, we decided to assume a step function for the $C^{18}O$ abundance: (i) a constant abundance, X_0 , that is expected to be close to the canonical value ($X_0 = 2 \pm 2 \times 10^{-7}$) for radii lower than a given radius, R_0 and (ii) an abundance, X_1 , that is expected to be $<X_0$ for larger radii. Thus

defined R_0 , is the evaporation radius of CO. The values of X_0 , R_0 , and X_1 were fit by the model. This approximation was still not sufficient to produce a good fit. We had to add another step, and two new variables, R_1 and X_2 , in the $C^{18}O$ abundance profile. The best fit is shown in Table 5. We have (i) a warm region ($R < 2000$ AU) with an $C^{18}O$ abundance $\sim 1.2 \times 10^{-7}$; (ii) an intermediate layer with a high value for the $C^{18}O$ depletion, $f_D \sim 20$, and (iii) an external layer ($R > 6000$ AU), which is essentially the molecular cloud component, in which the $C^{18}O$ abundance is close to the canonical value again.

We followed the same procedure for N_2H^+ . In this case the emission extends to the NE and greatly differs from spherical symmetry. For this reason we masked the NE quadrant in our fitting (see Fig. 4). Again, we conclude that the N_2H^+ abundance has a standard value of a few 10^{-10} in the inner region ($R < 3000$ AU) and in the molecular cloud, but decreases by at least a factor of 10 in the region between them.

Serpens-FIRS 1 is one of the three sources where we were able to fit the N_2D^+ $2\rightarrow 1$ emission. It is clear from the map morphology that the N_2D^+ emission is dominated by the molecular cloud component. Similar to the case of N_2H^+ , we masked the NE quadrant in our fitting. We found $X(N_2D^+) = 1.9 \times 10^{-11}$ in the molecular cloud, and obtained an upper limit of $X(N_2D^+) < 2.0 \times 10^{-12}$ for the protostellar core. Thus we have a deuterium fractionation of ~ 0.01 in the molecular cloud, and at least an order of magnitude lower in the core (see Fig. 7).

A.2. Cep E

Cep E-mm was cataloged as a Class 0 protostar by Lefloch et al. (1996). Cep E-mm was observed with IRAM 30 m (Lefloch et al. 1996; Chini et al. 2001), SCUBA (Chini et al. 2001), ISO (Froeblich et al. 2003), and Spitzer (Noriega-Crespo et al. 2005). All these studies confirm the Class 0 status of Cep E-mm and constrain the source total mass and bolometric luminosity in the range of $7\text{--}25 M_{\odot}$ and $80\text{--}120 L_{\odot}$, respectively. A bipolar molecular outflow, first reported by Fukui et al. (1989), is associated with Cep E-mm. The H_2 and [FeII] study by Eisloffel et al. (1996) shows a quadrupolar outflow morphology suggesting that the driving source is a binary.

C10 modeled this source as a sphere with an outer radius of 35 800 AU, $49''$ at the distance of Cepheus (see Table 4). Convolution with the observational beams, one would expect a source diameter of $\sim 108''$, $\sim 110''$, and $100''$ for the $C^{18}O$ $1\rightarrow 0$, N_2H^+ $1\rightarrow 0$, and N_2D^+ $2\rightarrow 1$ maps, respectively. These sizes agree with those found in our maps. Of our sources, Cep E has the largest envelope diameter versus $HPBW$ ratio and thus the best spatial sampling of the varying chemical conditions in its protostellar envelope (see Table 5).

In this source, we fit the emission with a constant and close-to-standard abundance of 6×10^{-8} for radii below 3500 AU, and a power-law variation of the $C^{18}O$ abundance for larger radii (see Table 5). The high value of f_D , ~ 10 , would occur close to $R = 3500$ AU. The same kind of profile was fit for the N_2H^+ abundance. In this case, the quality of the N_2D^+ $2\rightarrow 1$ line was not good enough to fit the abundance profile. We derived an averaged abundance across the envelope of $\sim 7 \times 10^{-12}$ by fitting the spectrum observed towards the center position.

A.3. IC 1396 N

IC 1396 N is the globule associated with IRAS 21391+5802. It has strong submillimeter and millimeter continuum emission

(Wilking et al. 1993; Sugitani et al. 2000; Codella et al. 2001), high density gas (Serabyn et al. 1993; Cesaroni et al. 1999; Codella et al. 2001; Beltrán et al. 2004), and water maser emission (Felli et al. 1992; Tofani et al. 1995; Patel et al. 2000). IC 1396 N is thus an active site of star formation. Using BIMA interferometric millimeter observations, Beltrán et al. (2002) detected three sources (BIMA 1, BIMA 2, and BIMA 3) deeply embedded within the globule. Among the three, BIMA 2 has the strongest millimeter emission and is associated with an energetic E-W bipolar outflow (Codella et al. 2001; Beltrán 2002, 2004). Recent studies by Neri et al. (2007) and Fuente et al. (2007) using the Plateau de Bure interferometer show that BIMA 2 is itself a protocluster composed of 3 cores.

C10 modeled BIMA 2 as a sphere with an outer radius of 29 600 AU, 39'' at the distance of IC 1396 N (see Table 4). Together with Cep E-mm, it is our best-sampled protostellar envelope (large envelope diameter to *HPBW* ratio). Interferometric observations published by Fuente et al. (2009) reveal that the outflow has already eroded a large biconical cavity in the molecular cloud. This is very likely the reason for the scarce C¹⁸O 1→0 and N₂H⁺ 1→0 emission to the east of the source. We have therefore masked this region to have a more accurate description of the toroidal envelope (see Fig. 4). This masking does not affect our results significantly (more than a factor of 2 in the abundances).

Similarly to Cep-E, the C¹⁸O emission was better fit with a constant and close-to-standard abundance of 6×10^{-8} in the inner region ($R < 5500$ AU) and a power-law variation of the C¹⁸O abundance for larger radii (see Table 5). The highest value of f_D is ~ 5 , and it would occur close to $R = 5500$ AU. The N₂H⁺ emission was better fit with a two-step function, $X_{N_2H^+} = 4.2 \times 10^{-10}$ for $R < 10\,000$ AU, 1.8×10^{-10} for $R > 15\,000$ AU, and 1.0×10^{-11} in between. The last step could be due to the vicinity of the sources BIMA 3 and BIMA 2 that heat the outer part of the envelope. These sources are not considered in the (*n-T*) fit by C10. In IC 1396 N, we have not detected the N₂D⁺ 2→1 line. We derived an upper limit to the N₂D⁺ abundance of $< 7 \times 10^{-12}$. The lower value of f_D and the non-detection of N₂D⁺ is consistent with this source being a warmer and more evolved object.

A.4. CB3

The CB3 Bok globule is located at ~ 2.5 kpc (Launhardt & Henning 1997; Wang et al. 1995). CB3-mm is the brightest millimeter source of the globule, first detected by Launhardt & Henning (1997) and subsequently observed in the sub-millimeter by Huard et al. (2000). Yun & Clemens (1994) detected a molecular bipolar outflow in CO, elongated in the NE-SW direction, associated with H₂O masers (de Gregorio-Monsalvo et al. 2006). This outflow has been mapped in various molecular lines by Codella & Bachiller (1999), who concluded that it originates from CB3-mm. The same authors concluded that CB3-mm is probably a Class 0 source.

CB3 is different from all the other sources in our sample. In this object, the 24 μ m sources are not spatially coincident with the 850 μ m emission peak. CB3-mm hosts two 24 μ m sources separated by $\sim 12''$ and neither of them is spatially coincident with the column density peak. The column density peak, better traced by the 850 μ m continuum emission, is located in between and almost equidistant from the two 24 μ m sources (see Fig. 4). C10 modeled the SED of this source by adding up the flux of the two 24 μ m sources. They fit the spatial distribution of the 450 μ m and 850 μ m maps as a sphere with an outer radius of 103 000 AU (i.e. 41'') (see Table 4). The radial density power

law in this source is steeper, ~ 2 , than in the others, with low densities (\sim a few 10^3 cm⁻³) in the outer envelope, $> 50\,000$ AU. This means that, although the protostellar envelope is very large, most of the emission comes from the inner 50 000 AU.

We fit the C¹⁸O emission with a step function. The abundance is constant at 1.3×10^{-7} for radii less than 25 000 AU, decreases to $< 3 \times 10^{-8}$ ($f_D > 3$), and then increases to 9.0×10^{-7} for $R > 60\,000$ AU (see Table 5). The large C¹⁸O abundance at large radii is very likely caused by the modeled extended low-density envelope providing a poor approximation. More likely, there are dense clumps immersed in a lower density cloud. The N₂H⁺ emission is fit with a constant abundance of $X_{N_2H^+} = 6.5 \times 10^{-10}$. The N₂D⁺ emission is fit with a constant abundance of $X_{N_2D^+} = 3.0 \times 10^{-11}$, implying an average $[N_2D^+]/[N_2H^+] = 0.05$.

A.5. NGC 7129–FIRS 2

NGC 7129 is a reflection nebula located in a complex and active star-forming site at a distance of 1250 pc (Hartigan & Lada 1985; Miranda et al. 1993). NGC 7129 FIRS 2 is not detected at optical or near-infrared wavelengths. Its position is spatially coincident with a ¹³CO column density peak (Bechis et al. 1978) and a high-density NH₃ cloudlet (Guesten & Marcaide 1986), and it is close to an H₂O maser (Rodríguez et al. 1980). NGC 7129–FIRS 2 has been classified as a Class 0 IM protostar by Eiroa et al. (1998), who carried out a multi-wavelength study of the continuum emission from 25 to 2000 μ m. Edwards & Snell (1983) detected a bipolar CO outflow associated with FIRS 2. The interferometric study by Fuente et al. (2001) reveals that this outflow presents a quadrupolar morphology. In fact, the outflow seems to be the superposition of two flows, FIRS 2-out 1 and FIRS 2-out 2, likely associated with FIRS 2 and a more evolved star (FIRS 2-IR), respectively. Fuente et al. (2005a,b) carried out a complete chemical study of FIRS 2 providing the first detection of hot core in an IM Class 0. Based on all these studies, FIRS 2 is considered the youngest IM object known at present.

C10 modeled NGC 7129–FIRS 2 as a sphere with an outer radius of 18 600 AU, 15'' at the distance of NGC 7129 (see Table 4). Since the source is very compact and barely resolved in the maps of the C¹⁸O 1→0 and N₂H⁺ 1→0 lines, we fit only an average abundance in for these species. The average CO depletion factor is $f_D = 3$, consistent with the depletion factor found by Fuente et al. (2005a) based on H¹³CO⁺ observations. The protostellar envelope is, however, resolved at the frequency of the N₂D⁺ 3→2 line. Since previous interferometric observations published by Fuente et al. (2005a) reveal that the N₂D⁺ emission is absent towards the hot core, we fitted the N₂D⁺ 3→2 emission assuming that it arises in a ring. The best fit is for a ring with inner radius of 9000 AU and an outer radius of 11 000 AU. Within the ring the N₂D⁺ abundance is $\sim 4.5 \times 10^{-11}$, and the deuterium fractionation, ~ 0.1 , is the typical value found in prestellar cores.

References

- Anders, E., & Grevesse, N. 1989, *Geochim. Cosmochim. Acta*, 53, 197
 Bechis, K. P., Harvey, P. M., Campbell, M. F., & Hoffmann, W. F. 1978, *ApJ*, 226, 439
 Beltrán, M. T., Girart, J. M., Estalella, R., Ho, P. T. P., & Palau, A. 2002, *ApJ*, 573, 246
 Beltrán, M. T., Girart, J. M., Estalella, R., & Ho, P. T. P. 2004, *A&A*, 426, 941
 Bergin, E. A., Maret, S., van der Tak, F. F. S., et al. 2006, *ApJ*, 645, 369
 Bisschop, S. E., Fraser, H. J., Öberg, K. I., van Dishoeck, E. F., & Schlemmer, S. 2006, *A&A*, 449, 1297
 Boogert, A. C. A., Pontoppidan, K. M., Knez, C., et al. 2008, *ApJ*, 678, 985
 Casali, M. M., Eiroa, C., & Duncan, W. D. 1993, *A&A*, 275, 195
 Caselli, P., Hartquist, T. W., & Havnes, O. 1997, *A&A*, 322, 296

- Caselli, P., Walmsley, C. M., Zucconi, A., et al. 2002, *ApJ*, 565, 344
- Caselli, P., Vastel, C., Ceccarelli, C., et al. 2008, *A&A*, 492, 703
- Caux, E., Ceccarelli, C., Castets, A., et al. 1999, *A&A*, 347, L1
- Ceccarelli, C., & Dominik, C. 2005, *A&A*, 440, 583
- Cesaroni, R., Felli, M., Jenness, T., et al. 1999, *A&A*, 345, 949
- Chini, R., Ward-Thompson, D., Kirk, J. M., et al. 2001, *A&A*, 369, 155
- Codella, C., & Bachiller, R. 1999, *A&A*, 350, 659
- Codella, C., Bachiller, R., Nisini, B., Saraceno, P., & Testi, L. 2001, *A&A*, 376, 271
- Collings, M. P., Dever, J. W., Fraser, H. J., McCoustra, M. R. S., & Williams, D. A. 2003, *ApJ*, 583, 1058
- Crapsi, A., Caselli, P., Walmsley, C. M., et al. 2005, *ApJ*, 619, 379
- Crimier, N., Ceccarelli, C., Lefloch, B., & Faure, A. 2009, *A&A*, 506, 1229
- Crimier, N., et al. 2010, *A&A*, accepted
- Daniel, F., Cernicharo, J., Roueff, E., Gerin, M., & Dubernet, M. L. 2007, *ApJ*, 667, 980
- de Gregorio-Monsalvo, I., Gómez, J. F., Suárez, O., et al. 2006, *AJ*, 132, 2584
- Draine, B. T., & Sutin, B. 1987, *ApJ*, 320, 803
- Edwards, S., & Snell, R. L. 1983, *ApJ*, 270, 605
- Eiroa, C., Palacios, J., & Casali, M. M. 1998, *A&A*, 335, 243
- Emprechtinger, M., Caselli, P., Volgenau, N. H., Stutzki, J., & Wiedner, M. C. 2009, *A&A*, 493, 89
- Felli, M., Palagi, F., & Tofani, G. 1992, *A&A*, 255, 293
- Flower, D. R., Pineau des Forêts, G., & Walmsley, C. M. 2004, *A&A*, 427, 887
- Flower, D. R., Pineau Des Forêts, G., & Walmsley, C. M. 2005, *A&A*, 436, 933
- Flower, D. R., Pineau Des Forêts, G., & Walmsley, C. M. 2006, *A&A*, 449, 621
- Froeberich, D., Smith, M. D., Hodapp, K.-W., & Eislöffel, J. 2003, *MNRAS*, 346, 163
- Fuente, A., Martín-Pintado, J., Bachiller, R., Neri, R., & Palla, F. 1998, *A&A*, 334, 253
- Fuente, A., Neri, R., Martín-Pintado, J., et al. 2001, *A&A*, 366, 873
- Fuente, A., Martín-Pintado, J., Bachiller, R., Rodríguez-Franco, A., & Palla, F. 2002, *A&A*, 387, 977
- Fuente, A., Neri, R., & Caselli, P. 2005a, *A&A*, 444, 481
- Fuente, A., Rizzo, J. R., Caselli, P., Bachiller, R., & Henkel, C. 2005b, *A&A*, 433, 535
- Fuente, A., Ceccarelli, C., Neri, R., et al. 2007, *A&A*, 468, L37
- Fuente, A., Castro-Carrizo, A., Alonso-Albi, T., et al. 2009, *A&A*, 507, 1475
- Frerking, M. A., Langer, W. D., & Wilson, R. W. 1982, *ApJ*, 262, 590
- Fukui, Y., Iwata, T., Mizuno, A., Ogawa, H., & Takaba, H. 1989, *Nature*, 342, 161
- Gerlich, D., Herbst, E., & Roueff, E. 2002, *Planet. Space Sci.*, 50, 1275
- Guesten, R., & Marcaide, J. M. 1986, *A&A*, 164, 342
- Guillet, V., Jones, A. P., & Pineau Des Forêts, G. 2009, *A&A*, 497, 145
- Hartigan, P., & Lada, C. J. 1985, *ApJS*, 59, 383
- Harvey, P. M., Wilking, B. A., & Joy, M. 1984, *ApJ*, 278, 156
- Hasegawa, T. I., Herbst, E., & Leung, C. M. 1992, *ApJS*, 82, 167
- Hasegawa, T. I., & Herbst, E. 1993, *MNRAS*, 263, 589
- Henning, T., Burkert, A., Launhardt, R., Leinert, C., & Stecklum, B. 1998, *A&A*, 336, 565
- Hily-Blant, P., Walmsley, M., Pineau Des forêts, G., & Flower, D. 2010, *A&A*, 513, A41
- Huard, T. L., Weintraub, D. A., & Sandell, G. 2000, *A&A*, 362, 635
- Hugo, E., Asvany, O., & Schlemmer, S. 2009, *J. Chem. Phys.*, 130, 164302
- Hurt, R. L., & Barsony, M. 1996, *ApJ*, 460, L45
- Jones, A. P., Tielens, A. G. G. M., & Hollenbach, D. J. 1996, *ApJ*, 469, 740
- Jørgensen, J. K., Schöier, F. L., & van Dishoeck, E. F. 2005, *A&A*, 437, 501
- Larsson, B., Liseau, R., Men'shchikov, A. B., et al. 2000, *A&A*, 363, 253
- Launhardt, R., & Henning, T. 1997, *A&A*, 326, 329
- Lee, H.-H., Bettens, R. P. A., & Herbst, E. 1996, *A&ASS*, 119, 111
- Lefloch, B., Eisloffel, J., & Lazareff, B. 1996, *A&A*, 313, L17
- Maret, S., Ceccarelli, C., Caux, E., et al. 2004, *A&A*, 416, 577
- Maret, S., Bergin, E. A., & Lada, C. J. 2006, *Nature*, 442, 425
- Mathis, J. S., Rumpl, W., & Nordsieck, K. H. 1977, *ApJ*, 217, 425
- McKee, C. F. 1989, *ApJ*, 345, 782
- Melnick, G. J., & Bergin, E. A. 2005, *Adv. Space Res.*, 36, 1027
- Minchin, N. R., White, G. J., & Ward-Thompson, D. 1995, *A&A*, 301, 894
- Miranda, L. F., Eiroa, C., & Gomez de Castro, A. I. 1993, *A&A*, 271, 564
- Neri, R., Fuente, A., Ceccarelli, C., et al. 2007, *A&A*, 468, L33
- Noriega-Crespo, A., Moro-Martín, A., Carey, S., et al. 2005, *ESA Spec. Publ.*, 577, 453
- Öberg, K. I., van Broekhuizen, F., Fraser, H. J., et al. 2005, *ApJ*, 621, L33
- Oliveira, C. M., Hébrard, G., Howk, J. C., et al. 2003, *ApJ*, 587, 235
- Pagani, L., Vastel, C., Hugo, E., et al. 2009, *A&A*, 494, 623
- Pagani, L., Salez, M., & Wannier, P. G. 1992, *A&A*, 258, 479
- Patel, N. A., Greenhill, L. J., Herrnstein, J., et al. 2000, *ApJ*, 538, 268
- Rodríguez, L. F., Moran, J. M., Ho, P. T. P., & Gottlieb, E. W. 1980, *ApJ*, 235, 845
- Rodríguez, L. F., Curiel, S., Moran, J. M., et al. 1989, *ApJ*, 346, L85
- Schöier, F. L., van der Tak, F. F. S., van Dishoeck, E. F., & Black, J. H. 2005, *A&A*, 432, 369
- Serabyn, E., Guesten, R., & Mundy, L. 1993, *ApJ*, 404, 247
- Sipilä, O., Hugo, E., Harju, J., et al. 2010, *A&A*, 509, A98
- Sugitani, K., Matsuo, H., Nakano, M., Tamura, M., & Ogura, K. 2000, *AJ*, 119, 323
- Tofani, G., Felli, M., Taylor, G. B., & Hunter, T. R. 1995, *A&AS*, 112, 299
- Umebayashi, T., & Nakano, T. 1990, *MNRAS*, 243, 103
- Van der Tak, F. F. S., & van Dishoeck, E. F. 2000, *A&A*, 358, L79
- Van der Tak, F. F. S., Black, J. H., Schöier, F. L., Jansen, D. J., & van Dishoeck, E. F. 2007, *A&A*, 468, 627
- Vastel, C., Caselli, P., Ceccarelli, C., et al. 2006, *ApJ*, 645, 1198
- Wang, Y., Evans, N. J., II, Zhou, S., & Clemens, D. P. 1995, *ApJ*, 454, 217
- Wilking, B., Mundy, L., McMullin, J., Hezel, T., & Keene, J. 1993, *AJ*, 106, 250
- Wilson, T. L., & Matteucci, F. 1992, *A&AR*, 4, 1
- Wilson, T. L., & Rood, R. 1994, *A&ARv*, 32, 191
- Yun, J. L., & Clemens, D. P. 1994, *AJ*, 108, 612