



UvA-DARE (Digital Academic Repository)

Aggregation of the reef-building tube worm *Filogranella elatensis* at Sempora, eastern Sabah, Malaysia

Hoeksema, B.W.; ten Hove, H.A.

DOI

[10.1007/s00338-011-0785-8](https://doi.org/10.1007/s00338-011-0785-8)

Publication date

2011

Document Version

Final published version

Published in

Coral reefs

[Link to publication](#)

Citation for published version (APA):

Hoeksema, B. W., & ten Hove, H. A. (2011). Aggregation of the reef-building tube worm *Filogranella elatensis* at Sempora, eastern Sabah, Malaysia. *Coral reefs*, 30(3), 839-839. <https://doi.org/10.1007/s00338-011-0785-8>

General rights

It is not permitted to download or to forward/distribute the text or part of it without the consent of the author(s) and/or copyright holder(s), other than for strictly personal, individual use, unless the work is under an open content license (like Creative Commons).

Disclaimer/Complaints regulations

If you believe that digital publication of certain material infringes any of your rights or (privacy) interests, please let the Library know, stating your reasons. In case of a legitimate complaint, the Library will make the material inaccessible and/or remove it from the website. Please Ask the Library: <https://uba.uva.nl/en/contact>, or a letter to: Library of the University of Amsterdam, Secretariat, Singel 425, 1012 WP Amsterdam, The Netherlands. You will be contacted as soon as possible.

UvA-DARE is a service provided by the library of the University of Amsterdam (<https://dare.uva.nl>)

Reef sites

Aggregation of the reef-building tube worm *Filogranella elatensis* at Semporna, eastern Sabah, Malaysia

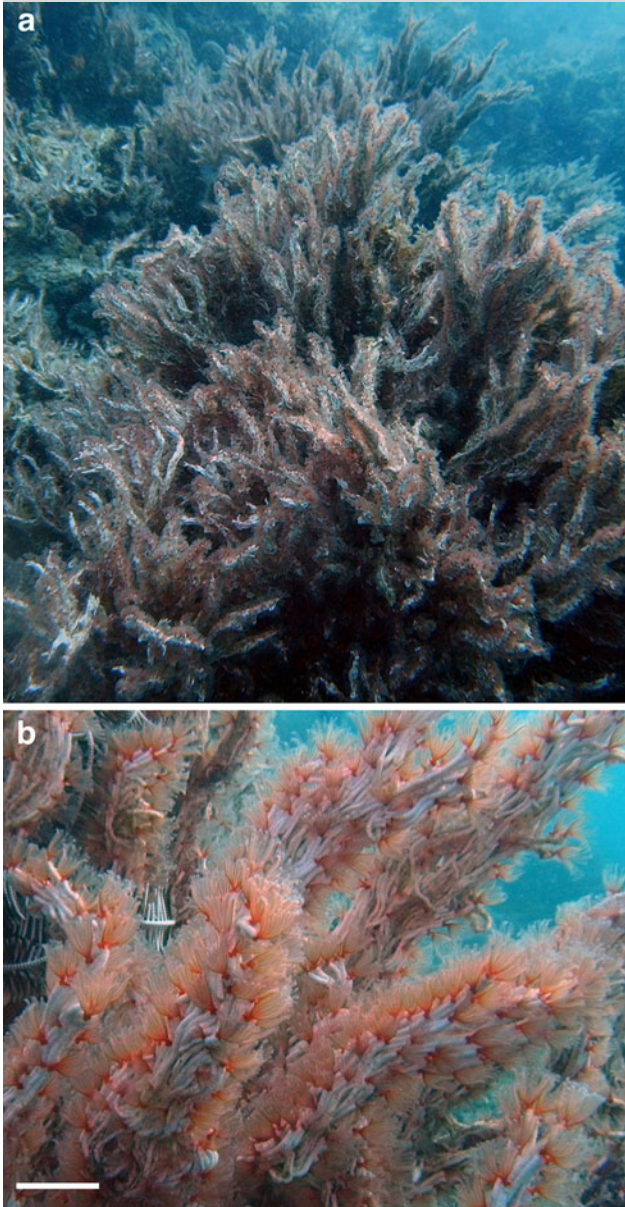


Fig. 1 *Filogranella elatensis* at Bakungan I., eastern Sabah. **a** Field of variable height with hummocky appearance. **b** Close-up: bundles of tubes. Scale bar: 2 cm

B. W. Hoeksema (✉)

Department of Marine Zoology, Netherlands Center for Biodiversity Naturalis, P.O. Box 9517, 2300 RA Leiden, The Netherlands
e-mail: bert.hoeksema@ncbnaturalis.nl

H. A. Ten Hove

Netherlands Center for Biodiversity Naturalis (Section ZMA), University of Amsterdam, P.O. Box 94766, 1090 GT Amsterdam, The Netherlands

Received: 15 April 2011 / Accepted: 18 May 2011 / Published online: 23 June 2011

© The Author(s) 2011. This article is published with open access at Springerlink.com

During the Semporna Marine Ecological Expedition in eastern Sabah (SMEE2010), a large field (ca. 15 m long, 3–6 m wide, with a cover of 75–100%) of the reef-building tube worm *Filogranella elatensis* Ben-Eliahu and Dafni, 1979 (Polychaeta: Serpulidae) was encountered on 16 December 2010 along the sheltered upper reef slope of Bakungan I. (N 04°45'11", E 118°29'16"), Darvel Bay, Semporna region, Malaysia (Fig. 1). The aggregation was fragmented and had an overall hummocky appearance. Its depth range varied between 3 and 7 m and its maximum height was approximately 50–60 cm. The various parts of the aggregation did not appear to be attached to the predominantly sandy substrate. As such, the morphology of these “reefs” is reminiscent of aggregations of the genus *Serpula* from temperate and cold waters (Ten Hove and Van den Hurk 1993).

Aggregations of this species are not uncommon (Ten Hove and Kupriyanova 2009) but previously they have not been reported to cover a large area of this size. The first record concerns a colony of 1.5 m wide, described by Ben-Eliahu and Dafni (1979), who suggested that aggregations in these serpulids may be related to pollution and a result of asexual reproduction. However, records from unpolluted areas are also known (Ten Hove and Van den Hurk 1993) and although the reef site in Darvel Bay did not show high coral cover, there was no direct indication for pollution. Similar to previously described serpulid aggregations, this field of tube worms was found in a sheltered habitat.

Acknowledgments WWF Malaysia organized SMEE2010. Research permits were issued by Sabah Parks and the Economic Planning Unit, Prime Minister’s Department, Malaysia.

Open Access This article is distributed under the terms of the Creative Commons Attribution Noncommercial License which permits any noncommercial use, distribution, and reproduction in any medium, provided the original author(s) and source are credited.

References

- Ben-Eliahu MN, Dafni J (1979) A new reef-building serpulid genus and species from the Gulf of Elat and the Red Sea, with notes on other gregarious tubeworms from Israeli waters. *Isr J Zool* 28:199–208
- Ten Hove HA, Kupriyanova EK (2009) Taxonomy of Serpulidae (Annelida, Polychaeta): The state of affairs. *Zootaxa* 2036:1–126
- Ten Hove HA, Van den Hurk P (1993) A review of Recent and fossil serpulid “reefs”; actiopaleontology and the ‘Upper Malm’ serpulid limestones in NW Germany. *Geol Mijnb* 72:23–67

Coral Reefs (2011) 30:839
DOI 10.1007/s00338-011-0785-8