



## UvA-DARE (Digital Academic Repository)

### Massive pulmonary embolism

van der Wouw, P.A.; Bax, M.

**DOI**

[10.1056/NEJM199702063360605](https://doi.org/10.1056/NEJM199702063360605)

**Publication date**

1997

**Published in**

The New England journal of medicine

[Link to publication](#)

**Citation for published version (APA):**

van der Wouw, P. A., & Bax, M. (1997). Massive pulmonary embolism. *The New England journal of medicine*, 336, 416-416. <https://doi.org/10.1056/NEJM199702063360605>

**General rights**

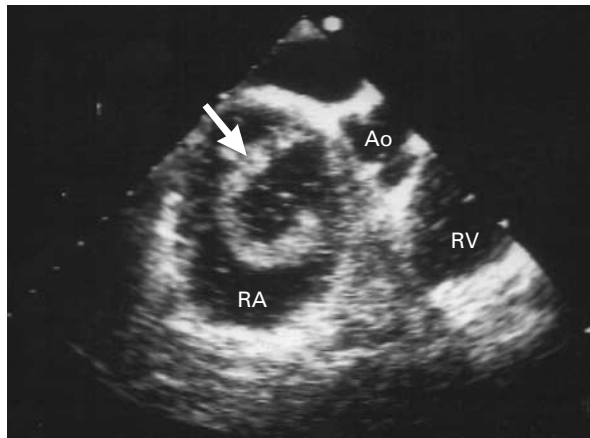
It is not permitted to download or to forward/distribute the text or part of it without the consent of the author(s) and/or copyright holder(s), other than for strictly personal, individual use, unless the work is under an open content license (like Creative Commons).

**Disclaimer/Complaints regulations**

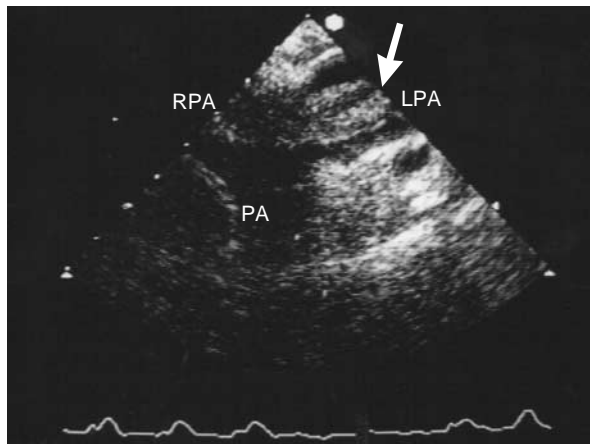
If you believe that digital publication of certain material infringes any of your rights or (privacy) interests, please let the Library know, stating your reasons. In case of a legitimate complaint, the Library will make the material inaccessible and/or remove it from the website. Please Ask the Library: <https://uba.uva.nl/en/contact>, or a letter to: Library of the University of Amsterdam, Secretariat, Singel 425, 1012 WP Amsterdam, The Netherlands. You will be contacted as soon as possible.



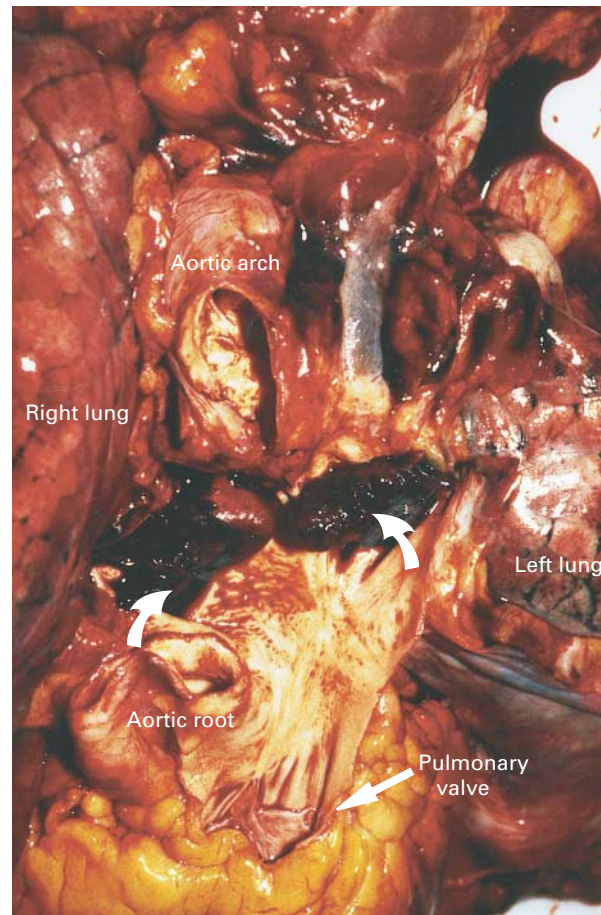
## Images in Clinical Medicine



A



B



C

*Massive Pulmonary Embolism*

An 82-year-old woman with a history of myocardial infarction and heart failure collapsed during rehabilitation following a cerebral infarction with hemiparesis. Several days earlier, the presence of deep venous thrombosis of the right leg was suspected but could not be confirmed by vascular ultrasonography. The patient was admitted to the intensive care unit with severe dyspnea and circulatory shock. The blood pressure was 70/40 mm Hg, and the central venous pressure was 30 mm Hg. The electrocardiogram showed sinus rhythm and right bundle-branch block. A transthoracic echocardiogram revealed dilatation of the chambers of the right side of the heart and nearly empty chambers on the left side. Transesophageal echocardiography showed a large, free-floating, echodense mass in the right atrium (arrow in Panel A) and a large mass in the left pulmonary artery (arrow in Panel B). The patient died five hours after the initiation of treatment with tissue plasminogen activator, inotropic agents, pulmonary vasodilators, and artificial ventilation. Postmortem examination showed large pulmonary emboli in the left and right pulmonary arteries (curved arrows in Panel C). Ao denotes aorta, RV right ventricle, RA right atrium, PA pulmonary-artery trunk, LPA left pulmonary artery, and RPA right pulmonary artery.

POLL A. VAN DER WOUW, M.D.  
MATTHIJS BAX, M.D.  
Academic Medical Center  
1105 AZ Amsterdam, the Netherlands

©1997, Massachusetts Medical Society.