



## UvA-DARE (Digital Academic Repository)

### Using CT colonography as a triage technique after a positive faecal occult blood test in colorectal cancer screening

Liedenbaum, M.H.; van Rijn, A.F.; de Vries, A.H.; Dekker, H.M.; Thomeer, M.; van Marrewijk, C.J.; Hol, L.; Dijkgraaf, M.G.; Fockens, P.; Bossuyt, P.M.; Dekker, E.; Stoker, J.

**DOI**

[10.1136/gut.2009.176867](https://doi.org/10.1136/gut.2009.176867)

**Publication date**

2009

**Document Version**

Final published version

**Published in**

Gut

[Link to publication](#)

**Citation for published version (APA):**

Liedenbaum, M. H., van Rijn, A. F., de Vries, A. H., Dekker, H. M., Thomeer, M., van Marrewijk, C. J., Hol, L., Dijkgraaf, M. G., Fockens, P., Bossuyt, P. M., Dekker, E., & Stoker, J. (2009). Using CT colonography as a triage technique after a positive faecal occult blood test in colorectal cancer screening. *Gut*, *58*(9), 1242-1249.  
<https://doi.org/10.1136/gut.2009.176867>

**General rights**

It is not permitted to download or to forward/distribute the text or part of it without the consent of the author(s) and/or copyright holder(s), other than for strictly personal, individual use, unless the work is under an open content license (like Creative Commons).

**Disclaimer/Complaints regulations**

If you believe that digital publication of certain material infringes any of your rights or (privacy) interests, please let the Library know, stating your reasons. In case of a legitimate complaint, the Library will make the material inaccessible and/or remove it from the website. Please Ask the Library: <https://uba.uva.nl/en/contact>, or a letter to: Library of the University of Amsterdam, Secretariat, Singel 425, 1012 WP Amsterdam, The Netherlands. You will be contacted as soon as possible.

*UvA-DARE is a service provided by the library of the University of Amsterdam (<https://dare.uva.nl>)*



## Using CT colonography as a triage technique after a positive faecal occult blood test in colorectal cancer screening

M H Liedenbaum, A F van Rijn, A H de Vries, et al.

*Gut* 2009 58: 1242-1249 originally published online July 21, 2009

doi: 10.1136/gut.2009.176867

---

Updated information and services can be found at:

<http://gut.bmj.com/content/58/9/1242.full.html>

---

*These include:*

### References

This article cites 49 articles, 23 of which can be accessed free at:

<http://gut.bmj.com/content/58/9/1242.full.html#ref-list-1>

Article cited in:

<http://gut.bmj.com/content/58/9/1242.full.html#related-urls>

### Open Access

This is an open-access article distributed under the terms of the Creative Commons Attribution Non-commercial License, which permits unrestricted use, distribution, and reproduction in any medium, provided the original work is properly cited.

### Email alerting service

Receive free email alerts when new articles cite this article. Sign up in the box at the top right corner of the online article.

---

### Topic Collections

Articles on similar topics can be found in the following collections

[Endoscopy](#) (1316 articles)

[Unlocked](#) (547 articles)

[Colon cancer](#) (2812 articles)

---

### Notes

---

To request permissions go to:

<http://group.bmj.com/group/rights-licensing/permissions>

To order reprints go to:

<http://journals.bmj.com/cgi/reprintform>

To subscribe to BMJ go to:

<http://journals.bmj.com/cgi/ep>

# Using CT colonography as a triage technique after a positive faecal occult blood test in colorectal cancer screening

M H Liedenbaum,<sup>1</sup> A F van Rijn,<sup>1</sup> A H de Vries,<sup>1</sup> H M Dekker,<sup>2</sup> M Thomeer,<sup>3</sup> C J van Marrewijk,<sup>3</sup> L Hol,<sup>3</sup> M G W Dijkgraaf,<sup>1</sup> P Fockens,<sup>1</sup> P M M Bossuyt,<sup>1</sup> E Dekker,<sup>1</sup> J Stoker<sup>1</sup>

<sup>1</sup>Academic Medical Centre Amsterdam, The Netherlands; <sup>2</sup>Radboud University Nijmegen Medical Centre, The Netherlands; <sup>3</sup>Erasmus Medical Centre Rotterdam, The Netherlands

Correspondence to: Mrs M H Liedenbaum, Department of Radiology, G1-226, Academic Medical Centre, Meibergdreef 9, 1105 AZ Amsterdam, The Netherlands; [M.H.Liedenbaum@amc.uva.nl](mailto:M.H.Liedenbaum@amc.uva.nl)

Revised 31 March 2009  
Accepted 1 April 2009

## ABSTRACT

**Objective:** The purpose of this study was to evaluate the effectiveness of CT colonography (CTC) as a triage technique in faecal occult blood test (FOBT)-positive screening participants.

**Methods:** Consecutive guaiac (G-FOBT) and immunochemical (I-FOBT) FOBT-positive patients scheduled for colonoscopy underwent CTC with iodine tagging bowel preparation. Each CTC was read independently by two experienced observers. Per patient sensitivity, specificity and positive and negative predictive values (PPV and NPV) were calculated based on double reading with different CTC cut-off lesion sizes using segmental unblinded colonoscopy as the reference standard. The acceptability of the technique to patients was evaluated with questionnaires.

**Results:** 302 FOBT-positive patients were included (54 G-FOBT and 248 I-FOBT). 22 FOBT-positive patients (7%) had a colorectal carcinoma and 211 (70%) had a lesion  $\geq 6$  mm. Participants considered colonoscopy more burdensome than CTC ( $p < 0.05$ ). Using a 6 mm CTC size cut-off, per patient sensitivity for CTC was 91% (95% CI 85% to 91%) and specificity was 69% (95% CI 60% to 89%) for the detection of colonoscopy lesions  $\geq 6$  mm. The PPV of CTC was 87% (95% CI 80% to 93%) and NPV 77% (95% CI 69% to 85%). Using CTC as a triage technique in 100 FOBT-positive patients would mean that colonoscopy could be prevented in 28 patients while missing  $\geq 10$  mm lesions in 2 patients.

**Conclusion:** CTC with limited bowel preparation has reasonable predictive values in an FOBT-positive population and a higher acceptability to patients than colonoscopy. However, due to the high prevalence of clinically relevant lesions in FOBT-positive patients, CTC is unlikely to be an efficient triage technique in a first round FOBT population screening programme.

Colorectal carcinoma (CRC) is the second leading cause of cancer deaths in the USA and many other countries, with an approximate lifetime risk of 6%.<sup>1</sup> Most CRCs are assumed to develop from benign, neoplastic adenomatous polyps.<sup>2</sup> Early detection and treatment of CRCs and colorectal adenomas could reduce mortality. Therefore, several countries are currently investigating or have already started a CRC screening programme using a faecal occult blood test (FOBT). The FOBT is a cost-effective, safe test that is acceptable to patients and that detects more cancers at a less advanced stage than would have presented symptomatically.<sup>3</sup> Screening with FOBT has been

demonstrated to reduce CRC-related mortality by 14–16% over 10–18 years.<sup>4–6</sup>

Similar to other screening tests, such as mammography or PAP smear, the FOBT generates a considerable number of false positives. In CRC screening trials, between 0.8% and 15% of participants tested had a positive FOBT result, while 55–65% of participants with a positive FOBT result had no CRC or adenoma.<sup>3,7,8</sup> As a result these participants undergo an unnecessary colonoscopy, which is considered by many individuals as an investigation with significant burden and risk of complications.<sup>9</sup> A potential solution to reduce this number of unnecessary colonoscopies would be the introduction of a triage instrument. A prerequisite for using a triage instrument is that it has the ability to identify correctly participants without CRC or large polyps in those with an FOBT-positive result. With a very high negative predictive value (NPV), the number of FOBT-positive patients receiving a colonoscopy could be reduced while no cases with CRC or large polyps would be missed. CT colonography (CTC) has been shown to have good per patient test characteristics in detecting CRC and large polyps.<sup>10–12</sup> Its per patient sensitivity was 96% in the detection of colorectal cancer, with a sensitivity of 93% in identifying polyps  $\geq 10$  mm and 86% for polyps  $\geq 6$  mm. The specificity for polyps  $\geq 10$  mm was 97% and for polyps  $\geq 6$  mm 86%.<sup>10</sup>

Good adherence to a population screening examination can be obtained if the offered screening method is highly acceptable to patients.<sup>13</sup> Previous studies have shown that CTC examinations are experienced as less burdensome than colonoscopy.<sup>9,14</sup> The burden of the CTC may be reduced even further if the examination is performed without an extensive bowel preparation as is required for colonoscopy.<sup>15–17</sup>

So far, the accuracy and acceptability to patients of CTC have only been evaluated in a screening setting and in a high-risk population, not in FOBT screening-positive patients as a triage technique. In this study we evaluated the use of CTC in an FOBT-positive screening population in terms of its diagnostic accuracy, positive predictive value (PPV) and NPV, and its burden, relative to colonoscopy.

## METHODS

### Study population

In two FOBT screening pilot studies in The Netherlands a cohort of approximately 30 000



This paper is freely available online under the BMJ Journals unlocked scheme, see <http://gut.bmj.com/info/unlocked.dtl>

individuals between 50 and 75 years of age received an FOBT test at home, of which half received a non-rehydrated guaiac test (G-FOBT; Haemocult II, Beckman Coulter, Fullerton, California, USA) and the other half received a semi-quantitative immunochemical test with a cut-off level of 50 ng/ml for positive testing (I-FOBT, OC-sensor, Eiken Chemical, Tokyo, Japan). This was the first pilot study of CRC screening in The Netherlands, thus invitees had not received any other CRC screening test previously. The results of this FOBT pilot study have been reported in detail elsewhere.<sup>18 19</sup> The FOBT-positive patients scheduled to undergo colonoscopy were invited to undergo a CTC before the colonoscopy at the Academic Medical Centre of Amsterdam, Radboud University Nijmegen Medical Centre or the Erasmus Medical Centre of Rotterdam, The Netherlands. Exclusion criteria were: terminal illness, severe psychiatric symptoms, colonoscopy or another FOBT in the previous 2 years, examinations for research purposes with radiation exposure in the last 12 months, iodine contrast allergy, hyperthyroidism and pregnancy. The CTC study had been approved by the institutional review boards of the three institutions and written informed consent was obtained from all participants.

## CT colonography

### Bowel preparation

A non-cathartic bowel preparation was used to reduce patient discomfort. Two different bowel regimes were used. The first 153 participants received preparation 1 and the following 149 participants received preparation 2. Preparation 1 started 2 days before CTC and consisted of ingestion of 50 ml of high-osmolar ionic monomer meglumine ioxithalamate (Telebrix Gastro 300 mg I/ml; Guerbet, Cedex, France) with each meal ending with 50 ml 1.5 h before CTC (total 350 ml). In addition, patients followed a low-fibre diet for 2 days and took only liquids on the evening and morning before CTC. Preparation 2 started 1 day before CTC with the low-fibre diet and 50 ml of Telebrix four times (total 200 ml). The amount of ingested contrast agent was reduced during the second half of this study because new publications on CTC bowel preparation showed that only 1 day of bowel preparation results in good image quality and polyp detection.<sup>15 16 20</sup>

### CTC technique

Examinations were performed using a low dose protocol with 40 or 32 reference mAs on two 64-slice CT scanners (table 1). Participants were scanned in the supine and prone position. A muscle relaxant, 20 mg of butylscopolamine bromide (Buscopan; Boehringer-Ingelheim, Ingelheim, Germany) or, when contraindicated, 1 mg of glucagon hydrochloride (Glucagen; Novo-Nordisk, Bagsvaerd, Denmark), was injected immediately prior to insufflation of the colon. A flexible balloon-tipped rectal catheter (20 French gauge) was inserted to insufflate approximately 3 litres of CO<sub>2</sub> gas into the colon, using an automated insufflator (ProtoCO<sub>2</sub>, Bracco Diagnostics, Princeton, New York, USA). No intravenous contrast medium was administered.

### CTC image analysis

Because of the restricted bowel regime and the presence of tagged stool, a primary 2D axial evaluation (primary window setting 1500, -250 HU) was carried out with 3D problem solving for the detection of polyps. This was performed on a workstation with specialised software (View Forum, Philips

Medical Systems, The Netherlands; Aquarius Workstation, TeraRecon, San Matteo, California, USA). Two of seven experienced observers (radiologists and research fellows) who had each evaluated at least 100 CTCs verified by colonoscopy (range 100–700 CTCs) identified lesions in the FOBT-positive participants. The results of two observers were combined: CTC was considered positive if at least one observer had detected a lesion (“double reading”). This approach was used to enhance detection as CTC is used as a triage technique for which sensitivity and NPV are critical. The chance of missing a relevant lesion in an FOBT positive should be minimised.

Lesions were measured at the multiplanar reformatted (MPR) setting that showed the maximal diameter of the detected lesion. For each lesion, the location, morphology, size and probability (on a 5-point scale: 0, 25, 50, 75 or 100%) were annotated. Flat polyps were defined as lesions that protrude <2.5 mm from the adjacent mucosa.<sup>21</sup> Only lesions ≥6 mm that the observer reported with a ≥50% probability were considered positive and unblinded at colonoscopy. Quality of bowel preparation was rated on a scale from 1 (uninterpretable images due to untagged faeces) to 5 (excellent preparation with almost no untagged faeces) by each observer. When the CTC was judged insufficient for evaluation by two observers, the patient was excluded for analysis. All CTCs were also interpreted on extracolonic findings by one of five gastrointestinal radiologists. Findings were classified according to the CTC Reporting and Data System (C-RADS; for classification of categories see table 5).<sup>22</sup>

## Colonoscopy

Within approximately 2 weeks (mean 11 days; SD 10 days) after CTC, a colonoscopy was performed. Bowel preparation consisted of 4 litres of polyethylene glycol electrolyte solution (KleanPrep; Helsinn Birex Pharmaceuticals, Dublin, Ireland) or 4 litres of macrogol solution (Colofort; Laboratoires Macors, Auxerre, France) and a clear liquid diet starting the evening before colonoscopy. Experienced gastroenterologists, gastroenterology fellows and colonoscopy nurses with supervision performed optical colonoscopy with a standard colonoscope (Olympus, Tokyo, Japan). Sedation (midazolam, Dormicum; Roche, Basel, Switzerland), analgesics (fentanyl, Fentanyl-Janssen; Janssen Pharmaceuticals, Beerse, Belgium) and a muscle relaxant (butylscopolamine bromide, Buscopan; Boehringer-Ingelheim, Ingelheim, Germany) were commonly used in all patients (only 2% refused sedation).

During the withdrawal of the colonoscope starting from the caecum, the colonoscopy was videotaped and the findings of the CTC were revealed to the colonoscopist after completing the examination of one colonic segment. This technique is called “segmental unblinding” and leads to an enhanced reference standard due to combination of CTC and colonoscopy results. Polyp size was estimated by an opened biopsy forceps or by a linear measure probe (Olympus, Tokyo, Japan). In participants with an incomplete colonoscopy, the colonoscopy was repeated at a later time point. The histology of the lesion biopsies was classified as normal, hyperplastic, adenoma (serrated, tubular, tubulovillous or villous) or carcinoma according to the Vienna classification.<sup>23</sup> Advanced adenomas were defined as adenomas ≥10 mm, with high-grade dysplasia or with a villous component >20%.<sup>24</sup>

## Questionnaires and participation

Six standardised questionnaires, also used in previous CTC studies,<sup>9 25</sup> were given to all participants. Questionnaire 1 was to



## Colorectal cancer

**Table 1** CT parameters

	Philips Brilliance*	Siemens SOMATOM Sensation†
Collimation	64×0.625 mm	64×0.6 mm
Tube voltage	120 kV	120 kV
Pitch	1.2	1.4
Reference mAs	40 mAs	32 mAs
Slice thickness	0.9 mm	1.0 mm
Rotation time	0.4 s	0.5 s
Dose modulation	z-axis	CARE Dose 4D‡

\*Brilliance, Philips Medical Systems, Best, The Netherlands.

†SOMATOM Sensation, Siemens Medical Solutions, Munich, Germany.

‡CARE dose 4D incorporates x-y and z-axis modulation.

be completed at home before both examinations, questionnaires 2–5 before and just after CTC and colonoscopy, and questionnaire 6 was sent 5 weeks after colonoscopy. In questionnaire 1, participants were asked about their demographic characteristics. In questionnaire 2 (before the CTC) and questionnaire 4 (before colonoscopy) questions about discomfort of bowel preparation were asked on a 5-point scale (1 = no burden, 2 = mild, 3 = moderate, 4 = severe or 5 = extreme burden). Questions about discomfort of the examination were also asked after the examinations on a 5-point scale (questionnaire 3 and 5, respectively). In questionnaires 5 and 6, participants were asked which examination or bowel preparation they found most burdensome and what examination they would prefer in the future (answered on a 7-point scale: 1 = definitely CTC to 7 = definitely colonoscopy).

The participation rate was calculated for all FOBT-positive patients who attended the outpatient clinic. Reasons for not participating in the CTC study were noted for all FOBT-positive subjects who attended the outpatient clinic.

### Statistical analysis

The sensitivity, specificity, PPV and NPV of CTC using a CTC lesion size cut-off of  $\geq 10$  mm and  $\geq 6$  mm were calculated on a per patient basis for two size categories: lesions  $\geq 10$  mm and lesions  $\geq 6$  mm found at colonoscopy. This was done for both G-FOBT and I-FOBT at a 50 and 100 ng/ml cut-off. For our calculations the largest polyp size measured by CTC by the two observers was used when calculating the accuracy of CTC as a triage technique. A patient with a matched polyp that measured 4 mm at CTC, for example, but was measured as 6 mm at colonoscopy was considered as a false negative (using a  $\geq 6$  mm cut-off at CTC). Furthermore, we calculated the PPV and NPV for different CTC cut-off values and plotted them on a graph. Per polyp sensitivity for colonoscopy was calculated using the false-negative lesions at colonoscopy (known after unblinding of the CTC results). Answers on acceptability of the technique to patients and degree of burden between CTC and colonoscopy were compared using ordinal regression analysis. Differences in quality of bowel preparation were tested with the  $\chi^2$  test.

### RESULTS

Between June 2006 and May 2008, 356 participants were included in the CTC triage study in the participating centres. In fig 1 a flowchart is given, presenting the numbers of participants that gave informed consent and the numbers of excluded participants. The data of 302 participants were complete for analysis. The mean age of the participants was 61 years (SD 6). Further demographic characteristics of the participants are given in table 2. A total of 248 participants had a positive I-FOBT and 54 participants had a positive G-FOBT. This difference was due

to the differences in FOBT participation rate (I-FOBT had a 12.7% higher participation rate) and FOBT positivity rate; 2.4% of returned tests was positive for the G-FOBT and 8.5% for the I-FOBT with 50 ng/ml cut-off.<sup>18 19 26</sup>

### FOBT and colonoscopy results

CRC was found in 22 participants (7%); these were 14 participants in the I-FOBT group (PPV CRC 6%) and 8 participants in the G-FOBT group (PPV CRC 15%). A total of 208 lesions  $\geq 10$  mm were found in 142 participants (47%) and 398 lesions  $\geq 6$  mm in 211 participants (70%). The PPV for lesions  $\geq 10$  mm in the G-FOBT-positive group was 59% vs 44% in the I-FOBT-positive group. For lesions  $\geq 6$  mm the PPVs were 67 and 70% respectively. In table 3 the distribution of lesions per histology type is given (see van Rossum *et al*<sup>18</sup> for more details on the FOBT results). In total, 14 lesions  $\geq 6$  mm were found at colonoscopy after unblinding of the CTC results, and thus were false negative for colonoscopy. This results in a per polyp sensitivity for colonoscopy of 96% for lesions  $\geq 6$  mm. In 11 participants (3.6%) bleeding followed after polypectomy during colonoscopy for which one participant needed a hospital stay of one night. In none of the participants did a perforation occur.

### CT colonography

There were no complications at CTC. The CTCs of 10 participants were rated of insufficient quality for evaluation. The quality of bowel preparation in both preparation groups was not rated significantly different.

### Sensitivity and specificity

When using a CTC cut-off  $\geq 10$  mm, the per patient sensitivity of CTC was 82% (95% CI 74% to 89%) and the specificity was 86% (95% CI 80% to 93%) for finding lesions at colonoscopy  $\geq 10$  mm. One participant with a carcinoma was missed at CTC (sensitivity 95%) and 24 participants (17%) with an adenoma of  $\geq 10$  mm were missed. Twenty-three of these adenomas measured between 10 and 16 mm at colonoscopy and one measured 30 mm. The missed carcinoma was a flat rectal carcinoma that was even retrospectively not visible at CTC. In the 24 participants with a missed adenoma, 20 of these had a lesion that was detected at CTC but measured between 6 and 9 mm, thus being smaller than the 10 mm cut-off. In table 4 results for sensitivity and specificity are shown for I-FOBT with 50 and 100 ng/ml cut-off and for G-FOBT separately.

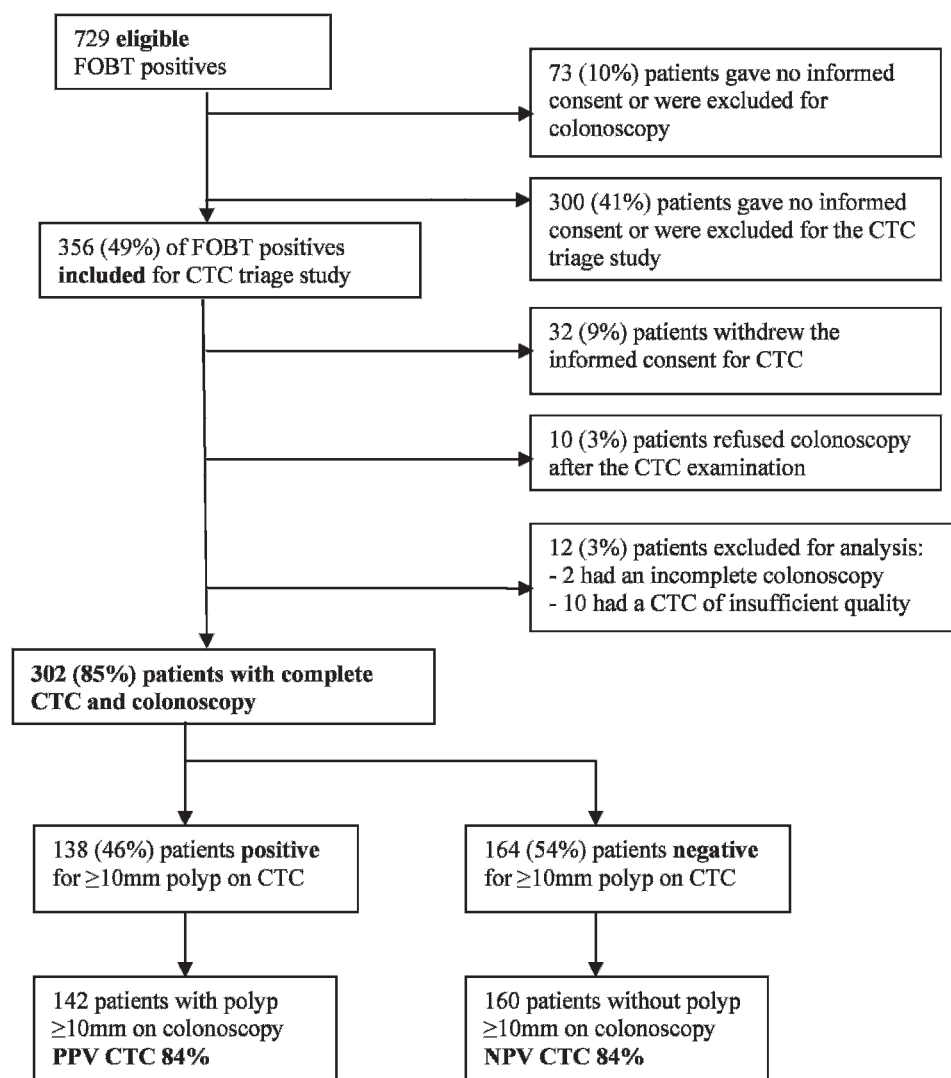
When using a CTC cut-off  $\geq 6$  mm the per patient sensitivity of CTC was 91% (95% CI 85% to 97%) and the specificity was 69% (95% CI 60% to 78%) for finding lesions at colonoscopy  $\geq 6$  mm.

Again the participant with the flat rectal carcinoma was missed using this cut-off; 15 participants (8%) with an adenoma of  $\geq 6$  mm and 6 (5%) with an adenoma of  $\geq 10$  mm were missed.

### Positive and negative predictive values

The PPV of CTC was 84% (95% CI 77% to 91%) for the detection of lesions  $\geq 10$  mm found at colonoscopy, when using a cut-off  $\geq 10$  mm at CTC. The NPV using this cut-off was 84% (95% CI 77% to 91%). Using a cut-off of  $\geq 6$  mm (for CTC and colonoscopy lesions) the PPV of CTC was 87% (95% CI 80% to 93%). An NPV of 77% (95% CI 69% to 85%) corresponded to this cut-off. Using CTC triage with a 10 mm cut-off in 100 FOBT-positive patients would mean that colonoscopy could be prevented in 54 patients, while missing  $\geq 10$  mm lesions in 9 patients. For a

**Figure 1** Flowchart of faecal occult blood test (FOBT)-positive participants. CTC, CT colonography; NPV, negative predictive value; PPV, positive predictive value.



6 mm cut-off this would mean prevention of colonoscopy in 28 patients, while missing  $\geq 10$  mm lesions in 2 patients.

Figure 2 shows a comparison of PPV and NPV for different CTC cut-off values. A cut-off value of 9.5 mm for CTC had a PPV of 81% and an NPV of 86% for the detection of colonoscopy lesions  $\geq 10$  mm; for 10.5 mm this was 89% and

83%. For a 5.5 mm cut-off this was 85% and 81% and for 6.5 mm this was 90% and 71%, respectively, for detection of colonoscopy lesions  $\geq 6$  mm.

#### Extracolonic findings

In total 12 E4 extracolonic findings were reported in 9 participants (2.7%). These findings had not previously been diagnosed in these patients. See table 5 for the detected extracolonic findings classified according to the C-RADS classification and the additional procedures that have been performed.

**Table 2** Demographic characteristics and FOBT type

Mean age in years (SD)	61 (6)
Male/female (ratio)	187/115 (1.6:1)
Ethnicity: total number of whites	291 (97%)
Highest education level:	
Primary school	20 (7%)
High school	27 (9%)
Vocational education	173 (57%)
University	77 (25%)
Not provided	5 (2%)
Nett income per month	
<US\$2059/>US\$2059/not provided	88/131/83
FOBT:	
G-FOBT	54 (18%)
I-FOBT	248 (82%)

FOBT, faecal occult blood test; G-FOBT, guaiac FOBT; I-FOBT, immunochemical FOBT.

**Table 3** Information on histology types of all removed lesions at colonoscopy

	All FOBT-positive subjects	I-FOBT 50 ng/ml (248 participants)	G-FOBT (54 participants)
Carcinoma	22	14	8
Adenoma	574	473	101
Hyperplastic polyp	207	182	25
Hamartoma	1	1	0
Inflammatory polyp	4	4	0
Lipoma	3	3	0

FOBT, faecal occult blood test; G-FOBT, guaiac FOBT; I-FOBT, immunochemical FOBT.

**Table 4** Per patient sensitivity, specificity, positive and negative predictive values for CT colonography (CTC) per lesion size category

	Both FOBT		I-FOBT 50 ng/ml		I-FOBT 100 ng/ml		G-FOBT	
	%	Ratio (95% CI)	%	Ratio (95% CI)	%	Ratio (95% CI)	%	Ratio (95% CI)
<b>Lesions <math>\geq 10</math> mm*</b>								
Sensitivity	82	116/142 (74 to 89)	80	88/110 (72 to 88)	81	69/85 (74 to 89)	88	28/32 (81 to 94)
Specificity	86	138/160 (80 to 93)	86	119/138 (79 to 93)	88	58/66 (81 to 94)	86	19/22 (80 to 93)
PPV	84	116/138 (77 to 91)	82	88/107 (75 to 90)	90	69/77 (84 to 96)	90	28/31 (85 to 96)
NPV	84	138/164 (77 to 91)	84	119/141 (77 to 92)	78	58/74 (70 to 86)	83	19/23 (75 to 90)
<b>Lesions <math>\geq 6</math> mm†</b>								
Sensitivity	91	192/211 (85 to 91)	90	157/174 (84 to 96)	90	100/111 (84 to 96)	94	34/36 (90 to 99)
Specificity	69	63/91 (60 to 89)	72	53/74 (63 to 80)	68	27/40 (57 to 77)	56	10/18 (46 to 65)
PPV	87	119/220 (80 to 93)	88	157/178 (82 to 95)	88	100/113 (82 to 95)	81	34/42 (73 to 89)
NPV	77	63/82 (69 to 85)	76	53/70 (67 to 84)	71	27/38 (62 to 80)	83	10/12 (76 to 91)

\*Detection of lesions  $\geq 10$  mm at colonoscopy using a CTC size cut-off of  $\geq 10$  mm. †Detection of lesions  $\geq 6$  mm at colonoscopy using a CTC size cut-off of  $\geq 6$  mm.

FOBT, faecal occult blood test; G-FOBT, guaiac FOBT; I-FOBT, immunochemical FOBT; NPV, negative predictive value; PPV, positive predictive value.

### Questionnaires and participation

When comparing the two examinations, 16% of all participants experienced the CTC examination as extremely or severely burdensome versus 41% for the colonoscopy examination ( $p < 0.05$ ; see fig 3A). For the bowel preparations, 23% of all participants experienced the CTC bowel preparation as extremely or severely burdensome, compared with 34% for colonoscopy ( $p > 0.05$ ; see fig 3B). After 5 weeks, 85% of the participants rated the colonoscopy as the most burdensome examination of the two. A majority of 67% of all participants would choose CTC as first examination after FOBT in future screening. Of all participants that were scheduled to undergo colonoscopy, 356 (54%) were also willing to undergo CTC (see fig 1). The main reason for not participating in CTC triage was that participants did not want to undergo an unnecessary additional examination (67%).

### DISCUSSION

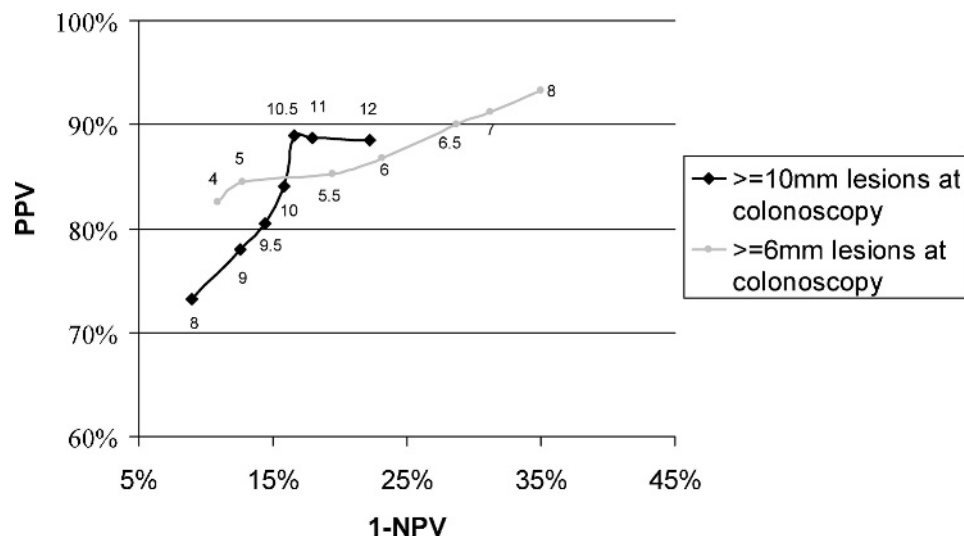
CTC has proven to be an accurate technique for detection of colorectal polyps and carcinomas.<sup>10 12</sup> This study investigated the role of CTC with a limited bowel preparation as a triage technique after positive FOBT in order to reduce the number of unnecessary colonoscopies. We found a high per patient

sensitivity of CTC in the FOBT-positive subjects, especially for finding lesions  $\geq 6$  mm at colonoscopy. The sensitivity for finding lesions  $\geq 10$  mm was somewhat lower, which may have resulted from the fact that most patients had only one lesion of  $\geq 10$  mm but multiple lesions of  $\geq 6$  mm, resulting in a higher probability of detecting at least one lesion  $\geq 6$  mm in a patient. It is important to realise, however, that most polyps of 6–9 mm are serendipitous findings because they usually do not bleed and therefore are not the main target of an FOBT screening programme.

When considering the usefulness of CTC as a triage technique, one should aim for a high NPV. NPVs in this study were fair but did not approach 100%, which would be ideal in a triage setting. When the CTC cut-off level was decreased, the NPV increased as result, but the number of false positives also increased, which is not preferable. The PPVs differed somewhat for CTC performance in the FOBT groups; the lowest PPV was found for I-FOBT with 50 ng/ml cut-off. This difference most probably occurred because of a difference in lesion prevalence in the FOBT groups, which can result in a different proportion of false positives.

One of the main reasons for performing CTC triage in FOBT-positive subjects instead of a direct colonoscopy is that the

**Figure 2** Plot of the positive predictive value (PPV) versus the negative predictive value (NPV) when using different cut-off sizes for CT colonography (CTC) for detection of true colonoscopy lesions of  $\geq 10$  mm and  $\geq 6$  mm. The curve shows a plot of PPV versus 1–NPV. Results for detection of patients with lesions on colonoscopy of  $\geq 10$  mm, for cut-off sizes for CTC lesions of  $\geq 8, 9, 9.5, 10, 10.5, 11$  and 12 mm are shown. Results for detection of lesions of  $\geq 6$  mm are shown for CTC cut-off sizes of 4, 5, 5.5, 6, 6.5, 7 and 8 mm.



**Table 5** Extracolonic findings in FOBT-positive participants

C-RADS classification*	No of participants†	Type of E4 findings‡	Additional procedures
E1	138 (42.6%)	–	
E2	164 (50.6%)	–	
E3	13 (4.0%)	–	Imaging: 3
E4	10 (3.1%)	Aortic aneurysm: 2 Iliac aneurysm: 1 Extracolonic mass: 8 Lung nodules: 2	Imaging: 12 Operation: 2

\*C-RADS classification:<sup>22</sup> E1 normal exam or anatomical variant; E2 clinically unimportant finding (eg, liver or kidney cysts); E3 probably unimportant finding (eg, indeterminate renal lesions); E4 potentially important finding (eg, aortic aneurysm, solid mass in liver or kidney).

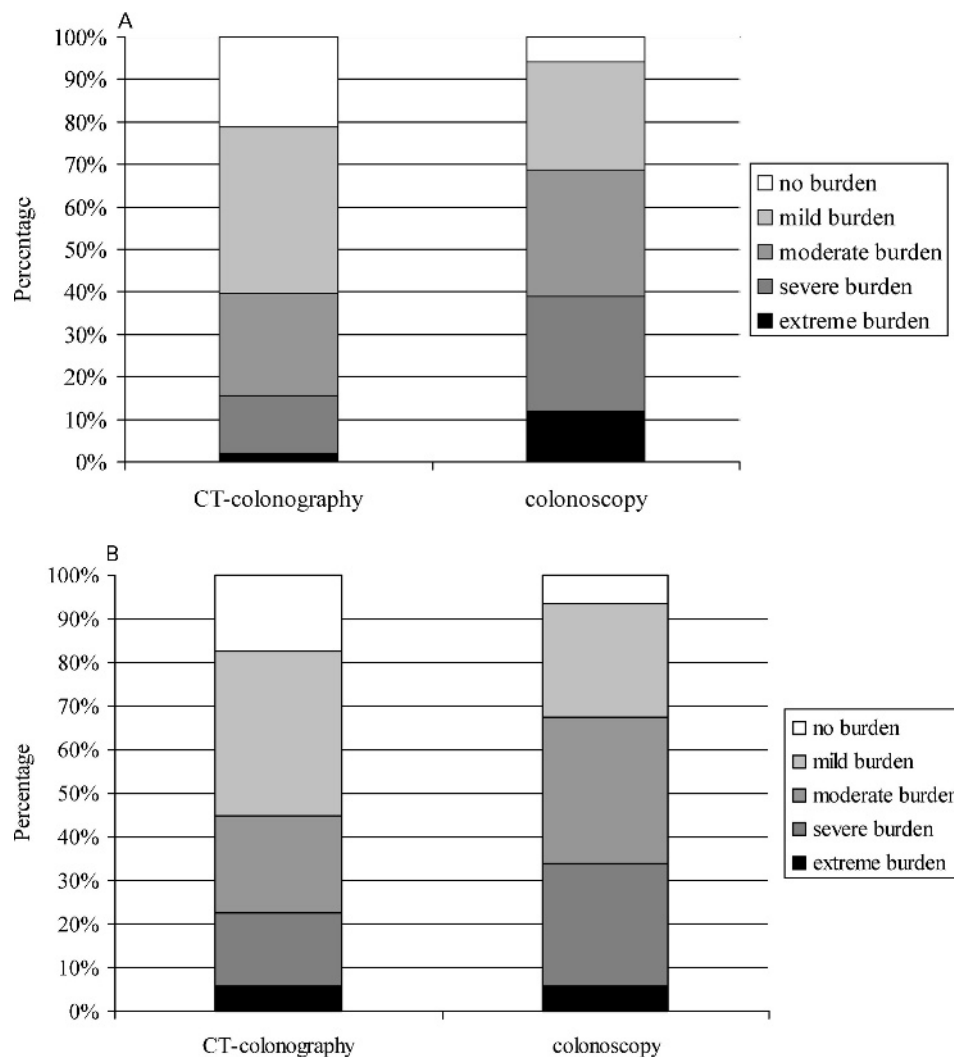
†Numbers represent all participants that received a CTC scan (thus also participants that refused a colonoscopy after CTC and participants with a CTC that was of insufficient quality for polyp detection)

‡All extracolonic findings found in 9 participants.

C-RADS, CTC Reporting and Data System; FOBT, faecal occult blood test.

acceptability has been reported to be better for CTC than for colonoscopy.<sup>9–14</sup> In this study too the majority of participants reported a lower burden of the total examination including bowel preparation for CTC than for colonoscopy. Furthermore, 67% of the participants would prefer CTC instead of colonoscopy as first choice for future examination.

**Figure 3** (A) Degree of burden for both examinations overall. Participants found the colonoscopy examination significantly more burdensome than the colonoscopy preparation. (B) Degree of burden from CT colonography and colonoscopy bowel preparations. No significant difference was found between the degree of burden from the colonoscopy bowel preparation and the CT colonography bowel preparation.





the I-FOBT.<sup>28</sup> Furthermore, a few studies have reported a decrease in lesion prevalence in successive FOBT screening rounds.<sup>29 30</sup> The use of CTC might then become more cost-efficient. Additionally, when calculating cost-efficiency, the false-negative lesions at colonoscopy should also be considered. In our study the per polyp sensitivity of colonoscopy was high (96%) for lesions  $\geq 6$  mm.

When considering the positivity rate of the FOBT itself, this was similar to that found in previous studies. In a review by Hewitson *et al*,<sup>5</sup> the positivity rate of the G-FOBT varied from 0.8% to 5.3%, and other studies showed I-FOBT positivity rates of 4.7% and 6.9%.<sup>8 28</sup> In this study, 2.4% of returned G-FOBTs and 8.5% of returned I-FOBTs with 50 ng/ml cut-off were positive.<sup>18 19</sup> A higher positivity rate of the FOBT consequently results in a higher number of false positives, which would make CTC as triage more efficient. The PPV of the I-FOBT was indeed lower than that of the G-FOBT; however, still 46% of patients in the I-FOBT group had an adenoma or cancer  $\geq 10$  mm. Therefore, CTC triage seems not to be an efficient strategy in this first round FOBT.

In contrast to previous CTC studies, we calculated the diagnostic accuracy by using the CTC lesion size as the cut-off: participants will be referred for colonoscopy based on the size of lesions measured at CTC. This method of analysing CTC as a triage technique may give a more realistic view than the method of matching CTC and colonoscopy polyps, and then using the colonoscopy lesion size as the reference size for data reporting. In this study reporting of sensitivity or specificity per lesion histology was considered irrelevant for the evaluation of triage with CTC, because the histology cannot be defined at CTC and only polyp size can be used as an indicator for referral to colonoscopy. Polyp size is an important parameter because larger polyps ( $\geq 10$  mm) have a higher chance of malignant development.<sup>2 31</sup> A disadvantage of this method is that differences in measurement of lesions at CTC and colonoscopy are not corrected by matching. Previous studies have shown that quite large differences in measurement of CTC and colonoscopy lesions can exist.<sup>32 33</sup> These differences can cause an increase in the number of false positives and false negatives of CTC in the setting of triage.

The graph of the predictive values for different CTC polyp size cut-offs shows an optimal cut-off for CTC (highest PPV and NPV) at 10 or 10.5 mm and 6 or 6.5 mm, respectively (see fig 2). These cut-offs might be different in other settings with another method of measurement (2D vs 3D) and different observers.<sup>34 35</sup> In this study, a 2D measurement was performed because a primary 2D read was carried out in the tagging-only prepared CTCs. Currently, there is lack of consensus on the optimal method of measurement; some studies showed that 2D measurement was most accurate,<sup>34 36 37</sup> while others recommended 3D measurement.<sup>35 38</sup>

A known advantage of CTC compared with colonoscopy is the lower complication rate. Previous studies reported perforation rates of 0.009% for CTC in screening participants<sup>39</sup> and of 0.3% for screening colonoscopy.<sup>40 41</sup> In this study no complications occurred during CTC, whereas 11 of those screened reported rectal blood loss after colonoscopy. No perforations occurred during colonoscopy. However, we must realise that colonoscopy is not only diagnostic but also incorporates treatment. Subjects with lesions at CTC will also have to undergo colonoscopy and have similar risks of complications.

At CTC, extracolonic findings should be reported for ethical reasons.<sup>42</sup> In this study group the number of highly relevant findings (E4) was low (3.1%), especially when compared with

other studies with high or average risk patients, where incidences of highly relevant findings have been reported ranging between 9% and 23%.<sup>43-45</sup> The results of our study are comparable with what was found in a large CTC screening trial with asymptomatic patients.<sup>11</sup> This could be due to the low radiation dose protocols in these studies, which might result in a reduced visibility and detection of E4 findings.<sup>46</sup> The significant extracolonic findings will inevitably lead to increased costs due to additional examinations and treatment when CTC is used as triage technique. Pickhardt *et al* showed that costs per screened person increased by US\$98.56 due to extracolonic findings in CTC screening.<sup>47</sup>

A potential limitation of this study is that bowel preparation with meglumine ioxithalamate was reduced from 2 days to just 1 day after inclusion of 153 participants. This was done to diminish the burden of the bowel preparation even more and because newly published literature pointed out that 1 day preparation was sufficient.<sup>15 16 20</sup> No differences in image quality were seen by the CTC observers, so this change of bowel preparation regime probably did not influence outcomes. Another potential limitation is that all CTCs were scored by two observers who varied during the research period. To facilitate a quick review process, the results of both observers were combined (double reading) and no consensus reading was performed. Due to the double reading the number of false negatives decreases and the sensitivity and NPV increase, at the expense of the specificity and PPV.<sup>48</sup> A double read is more costly and might not be time-efficient for screening or triage purposes in large populations. A computer-aided detection (CAD) system could be a solution to this problem, but on the other hand the additional value of CAD for experienced readers has not been proven.<sup>49</sup> A third potential limitation is that selection might have occurred between participants and non-participants in this CTC study. However, when aspects of age, gender and lesion prevalence between the FOBT-positive subjects in this study and the first original FOBT pilot study are compared, no differences are observed when considering those characteristics.<sup>18</sup>

In conclusion, this study shows that CTC with limited bowel preparation is unlikely to be an efficient triage technique in a first round FOBT population screening programme. The patient burden of the CTC was lower than that of colonoscopy and most participants preferred CTC to colonoscopy for future examination. However, due to the high lesion prevalence in the FOBT-positive group and the relatively high miss rate of relevant lesions at CTC, CTC should not be considered as a triage technique in this specific first round FOBT population. In further FOBT screening rounds, lesion prevalence is possibly lower and in this situation CTC could be more effective.

**Acknowledgements:** We thank all the staff of the Departments of Radiology and Gastroenterology and Hepatology of the Academic Medical Centre in Amsterdam, the Radboud University Nijmegen Medical Centre and the Erasmus Medical Centre in Rotterdam who contributed to this study.

**Funding:** Supported by The Netherlands Organization for Health Research and Development (ZonMW: project number 62300036)

**Competing interests:** None.

**Ethics approval:** The CTC study was approved by the institutional review boards of the three institutions involved in the study.

## REFERENCES

1. Winawer S, Fletcher R, Rex D, *et al*. Colorectal cancer screening and surveillance: clinical guidelines and rationale. Update based on new evidence. *Gastroenterology* 2003;124:544-60.

2. **Bond JH**. Polyp guideline: diagnosis, treatment, and surveillance for patients with colorectal polyps. Practice Parameters Committee of the American College of Gastroenterology. *Am J Gastroenterol* 2000;**95**:3053–63.
3. **Hardcastle JD**, Chamberlain JO, Robinson MH, *et al*. Randomised controlled trial of faecal-occult-blood screening for colorectal cancer. *Lancet* 1996;**348**:1472–7.
4. **Heresbach D**, Manfredi S, D'halluin PN, *et al*. Review in depth and meta-analysis of controlled trials on colorectal cancer screening by faecal occult blood test. *Eur J Gastroenterol Hepatol* 2006;**18**:427–33.
5. **Hewitson P**, Glasziou P, Irwig L, *et al*. Screening for colorectal cancer using the faecal occult blood test, Hemoccult. *Cochrane Database Syst Rev* 2007;(1):CD001216.
6. **Towler B**, Irwig L, Glasziou P, *et al*. A systematic review of the effects of screening for colorectal cancer using the faecal occult blood test, hemoccult. *BMJ* 1998;**317**:559–65.
7. **Kronborg O**, Fenger C, Olsen J, *et al*. Randomised study of screening for colorectal cancer with faecal-occult-blood test. *Lancet* 1996;**348**:1467–71.
8. **Segnan N**, Senore C, Andreoni B, *et al*. Comparing attendance and detection rate of colonoscopy with sigmoidoscopy and FIT for colorectal cancer screening. *Gastroenterology* 2007;**132**:2304–12.
9. **van Gelder RE**, Birnie E, Florie J, *et al*. CT colonography and colonoscopy: assessment of patient preference in a 5-week follow-up study. *Radiology* 2004;**233**:328–37.
10. **Halligan S**, Altman DG, Taylor SA, *et al*. CT colonography in the detection of colorectal polyps and cancer: systematic review, meta-analysis, and proposed minimum data set for study level reporting. *Radiology* 2005;**237**:893–904.
11. **Kim DH**, Pickhardt PJ, Taylor AJ, *et al*. CT colonography versus colonoscopy for the detection of advanced neoplasia. *N Engl J Med* 2007;**357**:1403–12.
12. **Mulhull BP**, Veerappan GR, Jackson JL. Meta-analysis: computed tomographic colonography. *Ann Intern Med* 2005;**142**:635–50.
13. **Beebe TJ**, Johnson CD, Stoner SM, *et al*. Assessing attitudes toward laxative preparation in colorectal cancer screening and effects on future testing: potential receptivity to computed tomographic colonography. *Mayo Clin Proc* 2007;**82**:666–71.
14. **Taylor SA**, Halligan S, Saunders BP, *et al*. Acceptance by patients of multidetector CT colonography compared with barium enema examinations, flexible sigmoidoscopy, and colonoscopy. *AJR Am J Roentgenol* 2003;**181**:913–21.
15. **Jensch S**, de Vries AH, Pot D, *et al*. Image quality and patient acceptance of four regimens with different amounts of mild laxatives for CT colonography. *AJR Am J Roentgenol* 2008;**191**:158–67.
16. **Taylor SA**, Slater A, Burling DN, *et al*. CT colonography: optimisation, diagnostic performance and patient acceptability of reduced-laxative regimens using barium-based faecal tagging. *Eur Radiol* 2008;**18**:32–42.
17. **Zalis ME**, Perumpillichira JJ, Magee C, *et al*. Tagging-based, electronically cleansed CT colonography: evaluation of patient comfort and image readability. *Radiology* 2006;**239**:149–59.
18. **Van Rossum LG**, Van Rijn AF, Laheij RJ, *et al*. Random comparison of guaiac and immunochemical fecal occult blood tests for colorectal cancer in a screening population. *Gastroenterology* 2008;**135**:82–90.
19. **Hol L**, Kuipers EJ, van Ballegooijen M, *et al*. Diagnostic yield of screening for colorectal cancer in the Netherlands; randomized controlled trial comparing two different forms of faecal occult blood testing and sigmoidoscopy [abstract]. *Gastroenterology* 2008;**134**:A482.
20. **Callstrom MR**, Johnson CD, Fletcher JG, *et al*. CT colonography without cathartic preparation: feasibility study. *Radiology* 2001;**219**:693–8.
21. **Participants in the Paris workshop**. The Paris endoscopic classification of superficial neoplastic lesions: esophagus, stomach, and colon: November 30 to December 1, 2002. *Gastrointest Endosc* 2003;**58**(6 Suppl):S3–43.
22. **Zalis ME**, Barish MA, Choi JR, *et al*. CT colonography reporting and data system: a consensus proposal. *Radiology* 2005;**236**:3–9.
23. **Schlemper RJ**, Riddell RH, Kato Y, *et al*. The Vienna classification of gastrointestinal epithelial neoplasia. *Gut* 2000;**47**:251–5.
24. **Levine JS**, Ahnen DJ. Clinical practice. Adenomatous polyps of the colon. *N Engl J Med* 2006;**355**:2551–7.
25. **Florie J**, Jensch S, Nievelstein RA, *et al*. MR colonography with limited bowel preparation compared with optical colonoscopy in patients at increased risk for colorectal cancer. *Radiology* 2007;**243**:122–31.
26. **Hol L**, van Leerdam ME, van Ballegooijen M, *et al*. Attendance to screening for colorectal cancer in the Netherlands; randomized controlled trial comparing two different forms of faecal occult blood tests and sigmoidoscopy [abstract]. *Gastroenterology* 2008;**134**:A87–A88.
27. **Regge D**, Hassan C, Pickhardt PJ, *et al*. Impact of computer-aided detection on the cost-effectiveness of CT colonography. *Radiology* 2009;**250**:488–97.
28. **Guittet L**, Bouvier V, Mariotte N, *et al*. Comparison of a guaiac based and an immunochemical faecal occult blood test in screening for colorectal cancer in a general average risk population. *Gut* 2007;**56**:210–4.
29. **Steele RJ**, McClements P, Libby G, *et al*. Results from the first three rounds of the Scottish demonstration pilot of FOBT screening for colorectal cancer. *Gut* 2009;**58**:530–5.
30. **Weller D**, Coleman D, Robertson R, *et al*. The UK colorectal cancer screening pilot: results of the second round of screening in England. *Br J Cancer* 2007;**97**:1601–5.
31. **Lieberman D**, Moravec M, Holub J, *et al*. Polyp size and advanced histology in patients undergoing colonoscopy screening: implications for CT colonography. *Gastroenterology* 2008;**135**:1100–5.
32. **Gopalswamy N**, Shenoy VN, Choudhry U, *et al*. Is in vivo measurement of size of polyps during colonoscopy accurate? *Gastrointest Endosc* 1997;**46**:497–502.
33. **Gupta S**, Durkalski V, Cotton P, *et al*. Variation of agreement in polyp size measurement between computed tomographic colonography and pathology assessment: clinical implications. *Clin Gastroenterol Hepatol* 2008;**6**:220–7.
34. **Punwani S**, Halligan S, Irving P, *et al*. Measurement of colonic polyps by radiologists and endoscopists: who is most accurate? *Eur Radiol* 2008;**18**:874–81.
35. **Taylor S**, Slater A, Honeyfield L, *et al*. CT Colonography: effect of colonic distension on polyp measurement accuracy and agreement—in vitro study. *Acad Radiol* 2006;**13**:850–9.
36. **Burling D**, Halligan S, Taylor S, *et al*. Polyp measurement using CT colonography: agreement with colonoscopy and effect of viewing conditions on interobserver and intraobserver agreement. *AJR Am J Roentgenol* 2006;**186**:1597–604.
37. **Park SH**, Choi EK, Lee SS, *et al*. Polyp measurement reliability, accuracy, and discrepancy: optical colonoscopy versus CT colonography with pig colonic specimens. *Radiology* 2007;**244**:157–64.
38. **Yeshwant SC**, Summers RM, Yao J, *et al*. Polyps: linear and volumetric measurement at CT colonography. *Radiology* 2006;**241**:802–11.
39. **Pickhardt PJ**. Incidence of colonic perforation at CT colonography: review of existing data and implications for screening of asymptomatic adults. *Radiology* 2006;**239**:313–6.
40. **Lieberman DA**, Weiss DG, Bond JH, *et al*. Use of colonoscopy to screen asymptomatic adults for colorectal cancer. Veterans Affairs Cooperative Study Group 380. *N Engl J Med* 2000;**343**:162–8.
41. **Nelson DB**, McQuaid KR, Bond JH, *et al*. Procedural success and complications of large-scale screening colonoscopy. *Gastrointest Endosc* 2002;**55**:307–14.
42. **Miller FG**, Mello MM, Joffe S. Incidental findings in human subjects research: what do investigators owe research participants? *J Law Med Ethics* 2008;**36**:271–9, 211.
43. **Hara AK**, Leighton JA, Sharma VK, *et al*. Imaging of small bowel disease: comparison of capsule endoscopy, standard endoscopy, barium examination, and CT. *Radiographics* 2005;**25**:697–711.
44. **Hellstrom M**, Svensson MH, Lason A. Extracolonic and incidental findings on CT colonography (virtual colonoscopy). *AJR Am J Roentgenol* 2004;**182**:631–8.
45. **Yee J**, Kumar NN, Godara S, *et al*. Extracolonic abnormalities discovered incidentally at CT colonography in a male population. *Radiology* 2005;**236**:519–26.
46. **Rajapaksa RC**, Macari M, Bini EJ. Prevalence and impact of extracolonic findings in patients undergoing CT colonography. *J Clin Gastroenterol* 2004;**38**:767–71.
47. **Pickhardt PJ**, Hanson ME, Vanness DJ, *et al*. Unsuspected extracolonic findings at screening CT colonography: clinical and economic impact. *Radiology* 2008;**249**:151–9.
48. **Johnson CD**, MacCarty RL, Welch TJ, *et al*. Comparison of the relative sensitivity of CT colonography and double-contrast barium enema for screen detection of colorectal polyps. *Clin Gastroenterol Hepatol* 2004;**2**:314–21.
49. **Mang T**, Peloschek P, Plank C, *et al*. Effect of computer-aided detection as a second reader in multidetector-row CT colonography. *Eur Radiol* 2007;**17**:2598–607.