

X-RAY GALAXIES SELECTED FROM HYPERLEDA DATABASE

N. Pulatova^{1,3}, A. Tugay², L. Zadorozhna^{2,4}, R. Seeburger¹, O. Lukina², O. Gugin², O. Malyi⁵

¹*Max-Planck-Institut für Astronomie, Königstuhl 17, D-69117 Heidelberg, Germany,*

²*Taras Shevchenko National University of Kyiv, 4, Hlushkov Ave., Kyiv, UA-03127, Ukraine,*

³*Main Astronomical Observatory of the National Academy of Sciences of Ukraine,
27, Akademika Zabolotnoho St., Kyiv, UA-03143, Ukraine,*

⁴*Jagiellonian University, Faculty of Physics, Astronomy and Applied Computer Science,
ul. prof. Stanisława Łojasiewicza 11, 30-348, Kraków, Poland,*

⁵*Albufeira Astronomy Club, Albufeira, Portugal,*

e-mail: nadya@mao.kiev.ua

(Received 11 June 2022; in final form 05 August 2022; accepted 26 September 2022; published online 10 December 2022)

We cross-matched the 4XMM-DR10 catalog with the HyperLEDA database and obtained a new sample of galaxies that contain X-ray sources. Excluding duplicate observations and false matches, we present a total of 7759 galaxies with X-ray sources. In the current work, we present general properties of the sample: namely the distribution in equatorial coordinates, radial velocity distribution, morphological type, and X-ray fluxes. The sample includes morphological classification for 5241 galaxies with X-ray emission, almost half of which, 42%, are elliptical (E, E-S0). Most galaxies in the sample have nuclear X-ray emission (6313 or 81%), and the remaining 1443 (19%) present X-ray emission from the host galaxy. This sample can be used for future deep studies of multi-wavelengths properties of the galaxies with X-ray emission.

Key words: X-rays: galaxies, catalogues, galaxies: statistics

DOI: <https://doi.org/10.30970/jps.26.4901>

I. INTRODUCTION

The X-ray emission of galaxies is theorized to arise mostly from accretion on the supermassive black holes for active galactic nuclei (AGN) [6, 8, 9, 15, 17, 26], onto compact objects in binary systems, and from the hot phase of the interstellar medium for non-AGN [3, 10]. Therefore, X-ray observations of galaxies' central regions allow us to study properties of the accretion disc around compact objects. The broad studies of the numerous galaxies allow us to detect general patterns in the distribution of their parameters or investigate a certain type of their nuclear activity [4].

A recent study [5] compiled a catalog of 1172 X-ray galaxies. Each of the galaxies from this catalog was manually verified. There are a series of works dedicated to XXL region that was observed with the XMM Newton telescope [21, 24, 29]. The authors detected in XMM XXL field 50 000 X-ray AGNs, calculated the correlation function for each of them, and investigated their environment. Multiple images from XXL field among the optical counterparts of X-ray selected point-like sources were analyzed in [22], and the number and statistics were calculated. In [23] the authors have found that the sources with a hard-spectrum are more clustered than soft-spectrum sources, which may indicate that the two main types of AGN populate different environments. The influence of environment was studied more deeply in [25, 27, 28]. The results of this investigation provide evidence of the physical mechanisms that drive AGN and galaxy evolution within clusters.

A detailed search for every galaxy from the catalog was carried out and it was found that most galaxies have an active X-ray nucleus; Seyfert galaxies dominate at short distances, and quasars are prevalent at large distances.

It was revealed that 169 galaxies exhibit extended nuclei with a visible surface brightness distribution and 173 galaxies with more than one X-ray source. Of the 1172 X-ray galaxies from the catalog, we selected 11 nearby optically bright QSOs [11]. More than half of the sources (6 out of 11) are classified as radio-quiet QSOs. These sources have steep spectra $\Gamma > 2.1$. Extremely steep photon index ($\sim 2.4 - 2.5$) occurs for three radio-loud type I quasars.

Along with Chandra NuSTAR, Fermi-LAT, eROSITA X-ray observatories, XMM-Newton is one of the most important sources of X-ray observations. It is a space observatory that has been observing the sky in X-ray band for the last 20 years. The 4XMM-DR10 catalog contains data from 11647 observations covering an energy interval from 0.2 keV to 12 keV, which corresponds to 575158 unique X-ray sources [1]. HyperLEDA [<http://leda.univ-lyon1.fr>] is a database to study the physics of the galaxies and cosmology, which combines optical measurements published in literature and modern surveys into a unique homogeneous description of the astronomical objects [2].

Samples of X-ray galaxy clusters are used in observational cosmology for the derivation of cosmological parameters. X-ray observations of galaxy clusters are also used for the studies of galaxy clusters themselves, the physics of intracluster gas, interaction processes, matter transportation, and feedback processes. [7]. In particular, properties of X-ray galaxy clusters were studied in the following papers: [12–14, 16].

II. SAMPLE OF X-RAY GALAXIES

In this work, we chose the 4XMM-DR10 as one of the largest repository of X-ray sources from a single space telescope [1]. We cross-matched XMM-



Newton catalog with the HyperLEDA database. The HyperLEDA database contains more than 1.5 million objects that are identified as galaxies covering the whole sky. The 4XMM-DR10 database covers 849 991 detections of 575 158 unique sources over 2.85% of the sky. The fluxes and spectra are accessible for 303 023 bright sources (53% of all observations). We performed automatic cross-matching of these two databases using TOPCAT, and created a sample which includes 7905 X-ray galaxies. Correlation was performed in two stages. First, due to the EPIC cameras of the XMM, the telescope has a field of view (FOV) of 30' and the energy range from 0.15 to 15 keV, and angular resolution (6.6'' the FWHM of the point spread function (PSF) [20]); a galaxy in the HyperLEDA base may be identified as an X-ray source when the latter is found among the 4XMM-DR10 objects at a distance smaller than 6.6'' from the galaxy. We rounded the X-ray resolution and chose the limit 7'' between an X-ray source and the optical center of the galaxy. The second stage was to determine the upper boundary for the number of X-ray galaxies; we increased the radius of correlation between the X-ray 4XMM-DR10 source and a galaxy's center from the HyperLEDA database to a value of the semimajor axis of the galaxy in the U spectral band (the SDSS system). The U band was used because the number of galaxies, whose sizes are available, is the largest in this band. This extension of the radius resulted in detecting extragalactic X-ray sources beyond the galactic nuclei. Some of the input data was false or repetitive. Therefore, we performed checking for duplicate observations and false matches for spatially close objects. Several closest galaxies with large angular sizes were excluded from the sample because of a high probability of containing the background X-ray sources that are not connected with the host galaxy. After this, we determined 272 objects in our sample which were excluded as double entities. We excluded 3 galaxies with the angular size more than 26' (ESO056-115, ESO206-020A, NGC5457) containing many background X-ray sources not associated with the

goal of our research. Our sample was reduced from 7905 objects to 7759 galaxies emitting X-rays. For a few close galaxies, we have multiple (two or more) X-ray sources. We studied them in our previous paper, published in 2021 [5]. In this paper, we concentrate on distant galaxies with X-ray emission. If there was more than one X-ray source in a galaxy, we chose the brighter source located closer to the galactic center.

For each galaxy, we include the following parameters: Right ascension (*deg*), Declination (*deg*), Optical B magnitude (*mag*), Optical size (arcsec) from the HyperLEDA database, Radial velocity *cz* (km/s), X-ray flux in the total photon energy band (0.2–12 keV) from the XMM-DR10 catalog ($\text{erg}/\text{cm}^2 \cdot \text{s}$), the angular separation between the position of a galaxy's center in the HyperLEDA and XMM-Newton catalog (arcsec), and the designation of each object according to the Catalogue of Principal Galaxies (PGC). Morphological types are given for 67% of the sample. The rest of the sample consists of distant galaxies which appear as point sources.

Our sample of X-ray galaxies, which were identified in the cross-matching of these two databases, may form a basis for deeper studies for sampling certain interesting groups of objects, building spectra of objects of certain classes, and developing or improving the theory of their emission.

III. RESULTS

We present different types of distributions of the sample's parameters: the distribution of galaxies in equatorial coordinates, distributions of morphological types, the angular separation between the position of a galaxy's center in the HyperLEDA and XMM-Newton catalogs, and the angular diameter of a galaxy. Additionally, we discuss the relation between the optical magnitude and X-ray flux, and the relation between the optical magnitude and the radial velocity for the galaxies with X-ray sources in the sample.

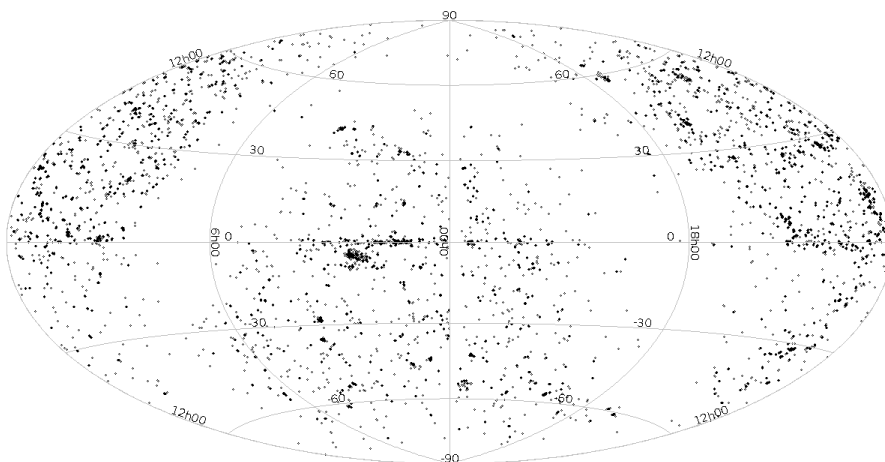


Fig. 1. Distribution in equatorial coordinates

A. Distribution of the sample of galaxies with X-ray sources in equatorial coordinates

Figure 1 shows the distribution of all galaxies of the sample on the celestial sphere with the equatorial coordinate system. It is possible to infer from the figure that X-ray galaxies of the sample tend towards a homogeneous distribution except the zones in the vicinity of 6h and

18h right ascensions. They correspond to the zone of avoidance of the HyperLEDA [2]. At the same time, the observations of XMM-Newton have a close to uniform distribution on the celestial sphere [1]. Some small regions with higher density of detected galaxies with X-ray emission do not indicate higher spacial density of galaxies with X-ray sources. This feature corresponds to the most intensive observations with XMM-Newton in these regions.

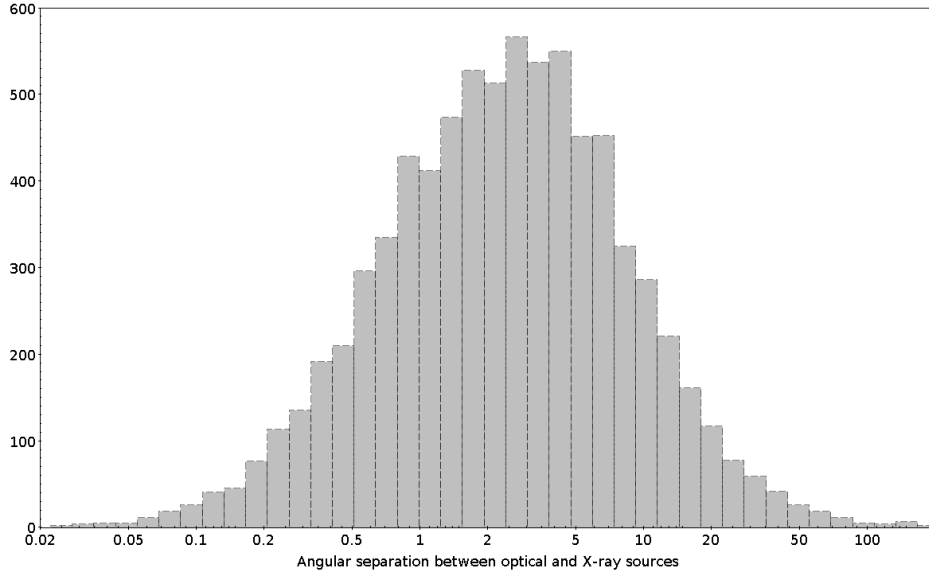


Fig. 2. The angular separation between the position of objects in HyperLEDA and XMM-Newton catalog, in arcsec (")

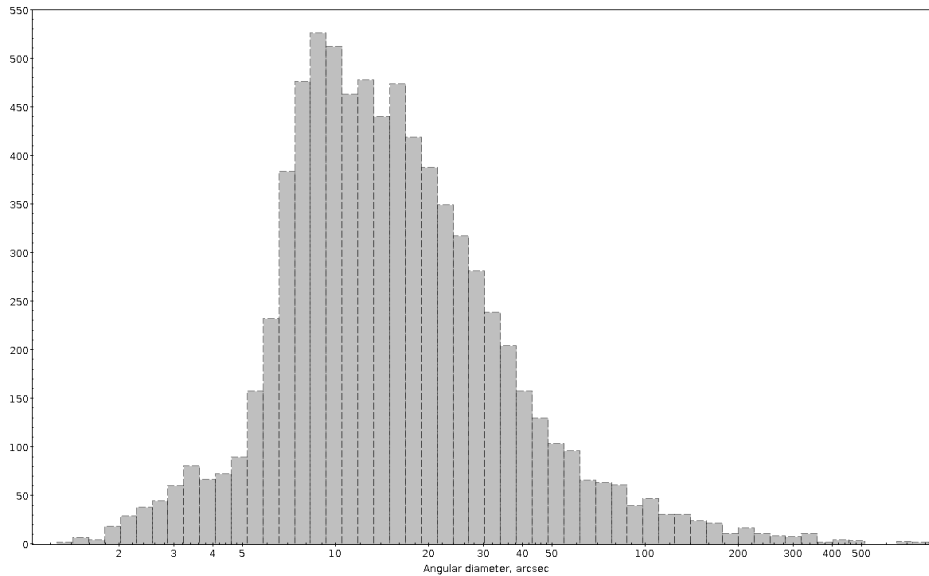


Fig. 3. Distribution by angular diameter, in arcsec (")

B. Morphological classification of the sample of galaxies with X-ray sources

Out of 7759 galaxies with X-ray sources, there are 5241 galaxies for which the morphological type is given in the HyperLEDA database (67% of the full sample). Almost half (42%) of the galaxies with X-ray emission with the morphological classification are elliptical (E, E-

S0); 35% are spiral without bars (S0-a, S0, Sb, Sab, Sa, Sm), 12% are barred galaxies (SBc, SBb, SBab, SBbc, SBa, SBm, SBcd, SBd), 2% are spiral galaxies with weak bars (SABb, SABc, SABA, SABd), and the other 1% are irregular (I, IB, IAB). Table 1 shows the exact number of galaxies of each type in the sample. A question mark next to the type designation indicates that classification of these galaxies is not clear.

C. The angular separation between the position of objects in HyperLEDA and XMM-Newton catalog

Figure 2 shows the distribution of the angular separation between the position of objects in the HyperLEDA and XMM-Newton catalogs in arcseconds. The minimum value of distance is $0.01''$, the maximum value is $191''$, and the mean value is $6.7''$. It is worth noting that the mean value corresponds to the angular resolution of XMM-Newton observations. 6314 galaxies of our sample have separation between the X-ray source and the optical center of a galaxy smaller than $7''$. We put a limit for the angular separation between the position of objects in the HyperLEDA and XMM catalogs that corresponds to the resolution of XMM telescope. It was chosen with the idea that even if 2 or more X-ray sources exist in this area, we will be able to identify only one common X-ray source.

But we also included in the whole sample X-ray sources which belong to the host galaxy. The shape of this distribution is similar to the logarithmic Gaussian. In this case, the falling inflection point is about $6''$. After this point, the number of detected objects decreases rapidly. Most of the galaxies of the sample belong to galaxies with X-ray nuclear emission, namely 6313 galaxies or 81% of whole sample, and 1443 galaxies (19%) present X-ray emission from the host galaxy.

D. Angular size distribution

Figure 3 shows the distribution of optical large semi-axis a of galaxies in arcseconds. The minimum value of a is $1.3''$, the maximum value is $25.6''$ corresponding to NGC5128. The mean value of the angular size is $25.8''$.

Type	E	E-S0	E?	S0-a	S0	S?	Sb	Sab	Sa
Number	1706	279	195	525	409	318	254	174	148
Type	Sm	Sc	SBc	SBb	Scd-Sm	SBab	SBbc	SBa	SBm
Number	18	340	306	101	75	68	66	55	12
Type	SBcd	SBd	SABb	SABc	SABa	SABd	I	IB	IAB
Number	13	7	42	34	29	6	42	14	5

Table 1. Morphological classification

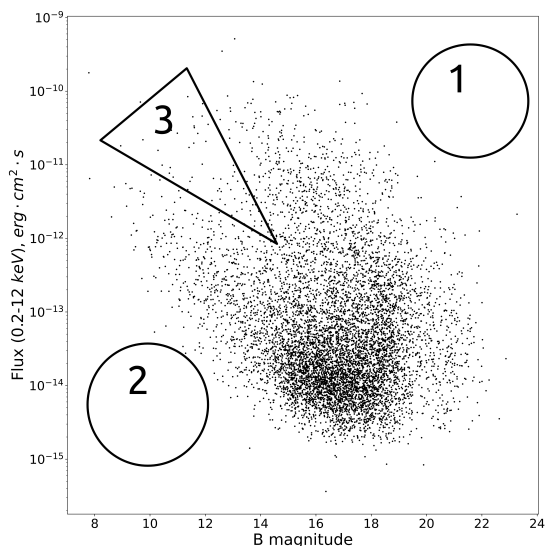


Fig. 4. Optical B magnitude and X-ray flux. The three regions marked with numbers 1-3 correspond to: 1 – the brightest galaxies with a low redshift; 2 – the limit of XMM sensitivity; 3 – the gap between two populations of active galaxies

E. Optical B magnitude and X-ray flux

Figure 4 shows the relation between the X-ray flux in the total photon energy band (0.2–12 keV) in $\text{erg}/\text{cm}^2 \cdot \text{s}$ and the optical magnitude for the sample of galaxies with X-ray sources. The optical magnitude is given in B band. The bottom part of the diagram corresponds to the limit of the instrument’s sensitivity (region number

2 on Fig. 4). On this diagram, there are some galaxies with X-ray sources bright in both X-ray and optical ranges; they are low redshift galaxies (region number 1 on Fig. 4). Most of the galaxies with faint X-ray sources are also faint in the optical range. Another feature that we see is that this diagram demonstrates two populations: bright in X-ray sources and faint optical galaxies and bright optical and faint X-ray sources. The upper right group is more active galaxies, the bottom left is less active objects, and the groups are separated by a gap (region number 3 on Fig. 4). Most of the galaxies are in the range of B magnitude 15–20 *mag* and X-ray fluxes $10^{-14} - 10^{-13} \text{ erg}/\text{cm}^2 \cdot \text{s}$.

F. Optical B magnitude and radial velocity cz

Figure 5 shows the relation between radial velocity in km/s and optical magnitude. Optical magnitude is given in B band. Radial velocity was calculated from the redshift using $v = cz$ dependence. Most galaxies follow a linear trend and lie in the range of 15–20 *mag* and $10^4 - 10^5 \text{ km}/\text{s}$. The brightest galaxies are located in the upper part of the graph due to having a high value of velocity ($>2 \cdot 10^5 \text{ km}/\text{s}$) and low magnitude (around 18^m). We suppose that these observational features are occurrences of the selection effect, because the sensitivity of telescopes does not allow detection of fainter objects at higher distances (and higher cz respectively). These galaxies are beamed quasars, namely the jets of beamed quasars that are oriented to the observer; therefore there is high intensity optical emission [18, 19].

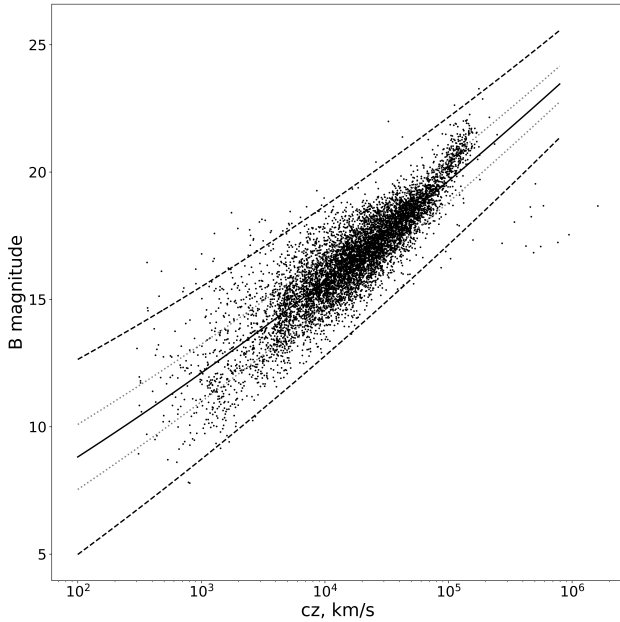


Fig. 5. Optical B magnitude and radial velocity cz . The solid line represents the best fit $cz = a \cdot B^2 + b \cdot B + c$, where: cz , B – radial velocity and B magnitude; a, b, c are free parameters. The values $a = 0.16$; $b = 2.51$; $c = 3.17$ were obtained by applying `optimize` function from `scipy` package. Gray dotted and black dashed lines represent 1σ and 3σ error, respectively

IV. CONCLUSIONS

We created a sample of 7759 X-ray galaxies from the XMM Newton DR10 catalog identified with the HyperLEDA database. Equatorial coordinates, optical magnitude, angular size, radial velocity, X-ray flux, the distance between optical and X-ray images, and a name are given to each X-ray galaxy. Most galaxies in the sample have nuclear X-ray emission (6313 or 81%), and

the remaining 1443 (19%) present X-ray emission from the host galaxy. We found and analyzed properties of parameter distributions of the sample, which can be used for future studies of X-ray properties of the galaxies. The whole sample is available on our website <https://sites.google.com/view/xgal>.

ACKNOWLEDGEMENTS

The authors are grateful to Dr Morgan Fouesneau (Max-Planck-Institut für Astronomie) for modeling “radial velocity versus B magnitude” with a quadratic regression and to Mr Alexander J. Dimoff (Max-Planck-Institut für Astronomie) for the helpful suggestion which has improved the English text of our paper. Nadiia G. Pulatova is grateful for the financial support for this work to The Max Planck Society Germany and to the director of the Max-Planck-Institut für Astronomie Prof. Dr. Dr. h.c. Thomas K. Henning for supporting Ukrainian astronomers. The work of Li-dia V. Zadorozhna was supported by the grant No. UMO-2018/30/Q/ST9/00795 from the National Science Centre, Poland. This research was made with the support of the Center for the Collective Use of Scientific Equipment “Laboratory of high energy physics and astrophysics”. This research has made use of the data obtained from the 4XMM XMM-Newton serendipitous source catalog compiled by the 10 institutes of the XMM-Newton Survey Science Centre selected by ESA.

We acknowledge the usage of the HyperLEDA database.

Funding for the Sloan Digital Sky Survey IV has been provided by the Alfred P. Sloan Foundation, the U.S. Department of Energy Office of Science, and the Participating Institutions. SDSS-IV acknowledges support and resources from the Center for High Performance Computing at the University of Utah. The SDSS website is www.sdss.org.

-
- [1] N. A. Webb *et al.*, *Astron. Astrophys.* **641**, A136 (2020); <https://doi.org/10.1051/0004-6361/201937353>.
 - [2] D. Makarov, P. Prugniel, N. Terekhova, H. Courtois, I. Vauglin, *Astron. Astrophys.* **570**, A13 (2014); <https://doi.org/10.1051/0004-6361/201423496>.
 - [3] A. R. Basu-Zych *et al.*, *Mon. Notices Royal Astron. Soc.*, **498**, 1651 (2020); <https://doi.org/10.1093/mnras/staa2481>.
 - [4] I. Galiullin, M. Gilfanov, *Astron. Astrophys.* **646**, A85 (2021); <https://doi.org/10.1051/0004-6361/202039522>.
 - [5] L. V. Zadorozhna, A. V. Tugay, S. Y. Shevchenko, N. G. Pulatova, *Kinemat. Phys. Celest. Bodies* **37**, 149 (2021); <https://doi.org/10.15407/kfnt2021.03.068>.
 - [6] D. Lynden-Bell, *Nature* **223**, 690 (1969); <https://doi.org/10.1038/223690a0>
 - [7] C. C. Kirkpatrick *et al.*, *Mon. Notices Royal Astron. Soc.* **503**, 5763 (2021); <https://doi.org/10.1093/mnras/stab127>.
 - [8] D. M. Alexander, R. C. Hickox, *New Astron. Rev.* **56**, 93 (2012); <https://doi.org/10.1016/j.newar.2011.11.003>.
 - [9] W. N. Brandt, G. Hasinger, *Annu. Rev. Astron. Astrophys.* **43**, 827 (2005); <https://doi.org/10.1146/annurev.astro.43.051804.102213>
 - [10] G. Fabbiano, in *Astrophysics and Space Science Library* **378**, p. 1; https://doi.org/10.1007/978-1-4614-0580-1_1.
 - [11] L. V. Zadorozhna, A. V. Tugay, O. I. Maluy, N. G. Pulatova, *J. Phys. Stud.* **25**, 4901 (2021); <https://doi.org/10.30970/jps.25.4901>.
 - [12] A. V. Tugay, L. V. Zadorozhna, S. Yu. Shevchenko, *Odessa Astron. Publ.* **33**, 22 (2020); <https://doi.org/10.18524/1810-4215.2020.33.216304>.

- [13] A. V. Tugay, S. S. Dylida, E. A. Panko, *Odessa Astron. Publ.* **29**, 34 (2016); <https://doi.org/10.18524/1810-4215.2016.29.84961>.
- [14] S. Y. Shevchenko, A. V. Tugay, *Odessa Astron. Publ.* **30**, 45 (2017); <https://doi.org/10.18524/1810-4215.2017.30.114263>.
- [15] A. A. Vasylenko, I. B. Vavilova, N. G. Pulatova, *Astron. Nachr.* **341**, Iss. 1-2 (2020); <https://doi.org/10.1002/asna.202013783>.
- [16] A. V. Tugay, N. G. Pulatova, A. D. Zhoga, *Odessa Astron. Publ.* **31**, 42 (2018); <https://doi.org/10.18524/1810-4215.2018.31.144738>.
- [17] N. G. Pulatova, I. B. Vavilova, U. Sawangwit, Iu. Babyk, S. Klimanov, *Mon. Notices Royal Astron. Soc.* **447**, 2209 (2015); <https://doi.org/10.1093/mnras/stu2556>.
- [18] Ting-Gui Wang, Hong-Yan Zhou, Jun-Xian Wang, You-Jun Lu, Yu Lu, *Astrophys. J.* **645**, 856 (2006); <https://doi.org/10.1086/504397>.
- [19] D. A. Schwartz *et al.*, *Astrophys. J.* **640**, 592 (2006); <https://doi.org/10.1086/500102>.
- [20] L. Strüder *et al.*, *Astron. Astrophys.* **365**, L18 (2001); <https://doi.org/10.1051/0004-6361:20000066>.
- [21] O. Melnyk *et al.*, *Astron. Astrophys.* **620**, A6 (2018); <https://doi.org/10.1051/0004-6361/201730479>.
- [22] F. Finet, A. Elyiv, O. Melnyk, O. Wertz, C. Horellou, J. Surdej, *Mon. Notices Royal Astron. Soc.* **452**, 1480 (2015); <https://doi.org/10.1093/mnras/stv1401>.
- [23] A. A. Elyiv, B. I. Hnatyk *Kinemat. Phys. Celest. Bodies* **23**, 56 (2007); <https://doi.org/10.3103/S088459130702002X>.
- [24] M. Pierre *et al.*, *Astron. Astrophys.* **592**, A1 (2016); <https://doi.org/10.1051/0004-6361/201526766>.
- [25] E. Koulouridis *et al.*, *Astron. Astrophys.* **620**, A20 (2018); <https://doi.org/10.1051/0004-6361/201832974>.
- [26] I. B. Vavilova, A. A. Vasylenko, I. V. Babyk, N. G. Pulatova, in *Active Galactic Nuclei: what's in a name? (AGN 2016)* (ESO, Garching bei München, Germany, 2016), p. 105 (2016); <https://doi.org/10.5281/zenodo.60643>.
- [27] I. B. Vavilova *et al.*, *Kosm. Nauk. Tehnol.* **21**, 94 (2015); <https://doi.org/10.15407/knit2015.05.094>.
- [28] I. B. Vavilova, A. A. Vasylenko, I. V. Babyk, N. G. Pulatova, *Odessa Astron. Publ.* **28**, 150 (2015); <https://doi.org/10.18524/1810-4215.2015.28.70610>.
- [29] M.-L. Menzel *et al.*, *Mon. Notices Royal Astron. Soc.* **457**, 110 (2016); <https://doi.org/10.1093/mnras/stv2749>.

РЕНТГЕНІВСЬКІ ГАЛАКТИКИ, ВІДБРАНІ З БАЗИ ДАНИХ HYPERLEDA

Н. Г. Пулатова^{1,3}, А. В. Тугай², Л. В. Задорожна^{2,4}, Р. Зеебургер¹, О. Лукіна², О. Гугнін², О. Малий⁵

¹Інститут астрономії імені Макса Планка, вул. Кьонігсштрассе, 17, Д-69117, Гайдельберг, Німеччина,

²Київський національний університет імені Тараса Шевченка, просп. Глушкова, 4, Київ, 03127, Україна,

³Головна астрономічна обсерваторія НАН України, вул. Академіка Заболотного, 27, Київ, 03143, Україна,

⁴Факультет фізики, астрономії та прикладної інформатики, Ягеллонський університет, Краків, 30-348, Польща,

⁵Астрономічний клуб Албуфейра, Португалія

Ми зіставили каталог 4XMM-DR10 з базою даних HyperLEDA та отримали нову вибірку галактик, які містять джерела рентгенівського випромінювання. Після відкидання повторних спостережень і помилкових збігів отримано загалом 7759 галактик із рентгенівськими джерелами. У цій статті описано загальні властивості вибірки: а саме розподіл в екваторіальних координатах, розподіл радіальних швидкостей, морфологічний тип і рентгенівські потоки. Вибірка містить морфологічну класифікацію для 5241 галактик із рентгенівським випромінюванням, майже половина з яких, 42%, є еліптичними (E, E-S0). Для вибірки більшості галактик характерне рентгенівське випромінювання з ядра, (6313 або 81%), а решта 1443 (19%) становлять рентгенівське випромінювання батьківської галактики. Цю вибірку можна використовувати для майбутніх детальних багатохвильових досліджень властивостей галактик із рентгенівським випромінюванням.

Ключові слова: рентген: галактики, каталоги, галактики: статистика.