

---

12-2022

## Education on Boyer 4th Newsletter - December 2022

Tina Keller

Follow this and additional works at: [https://mosaic.messiah.edu/edu\\_st](https://mosaic.messiah.edu/edu_st)



Part of the [Education Commons](#)

Permanent URL: [https://mosaic.messiah.edu/edu\\_st/26](https://mosaic.messiah.edu/edu_st/26)

---

Sharpening Intellect | Deepening Christian Faith | Inspiring Action

Messiah University is a Christian university of the liberal and applied arts and sciences. Our mission is to educate men and women toward maturity of intellect, character and Christian faith in preparation for lives of service, leadership and reconciliation in church and society. This content is freely provided to promote scholarship for personal study and not-for-profit educational use.

# EDUCATION ON Boyer 4th

The campus newsletter of the Messiah University Education Department

Issue 22 | December 2022

## MATH MANIPULATIVES AND CULTURAL RESPONSIVENESS

Dr. Buckley writes on the importance of cultural responsiveness in math.

## ESTEAM SATURDAY

Education majors hosted migrant ed students on campus

*In Every Issue*

MESSAGE FROM THE CHAIR, STUDENTS IN THE DEPARTMENT, TECHNOLOGY CORNER, PHOTOS FROM THE FIELD, PROFESSOR SPOTLIGHT, ALUMNI ADVICE, DEVOTIONAL, UPCOMING EVENTS



# MESSAGE FROM THE CHAIR

DR. TINA KELLER

December, 2022

Merry Christmas!

'O Holy Night' is one of my favorite Christmas carols. The Celtic Woman version featuring Chloë Agnew is the best rendition, in my humble opinion. As we celebrate the birth of Jesus this season, I am reminded of the lyrics of this beloved song. The phrase, "the weary world rejoices," keeps replaying in my mind.

This world is so weary! Schools are weary. Teachers are especially weary. I will not replay the list of reasons; you could probably name them all as well as I can. The exhaustion is real and palpable.

I was recently interviewed by our local newspaper, The Sentinel, regarding districts experiencing increased refugee and immigrant students. These new students have experienced change and weariness in ways that many of us cannot imagine. Some students are also English Learners, meaning they may not be able to communicate their basic needs to their teachers.

How do we respond? Does our faith impact this response?

I would like to offer that it is only due to our own "thrill of hope" that we can rejoice in our weariness. As Christians, we have a hope that many around us do not understand.

*"For our light affliction, which is but for a moment, is working for us a far more exceeding and eternal weight of glory, while we do not look at the things which are seen, but at the things which are not seen. For the things which are seen are temporary, but the things which are not seen are eternal." 2 Corinthians 4:17-18.*

When asked to comment on the increase of English Learners in our local schools, I intentionally tried to reframe the question to highlight these children's intrinsic beauty and worth. We have the privilege of welcoming these newcomers to our schools. My faith calls me to see these children as having tremendous ability and potential. They are made in the likeness of God; they are not an unwanted burden on already taxed school districts.

How does faith impact your hope? The weary world needs it.



*"The thrill of hope, the weary world rejoices, For yonder breaks a new and glorious morn."*



## On the Cover:

It's beginning to look a lot like Christmas around campus. Dr. Fischer and her Junior Level students turned Boyer into a Winter wonderland! We even had the chance to join the Polar Express.



# DEVOTIONAL

A MONTHLY DEVOTION WRITTEN BY MESSIAH  
UNIVERSITY EDUCATION STUDENTS.

*In the Midst of*

## THE WAVES



By Julie Condie

Psalm 22: 1-2  
(ESV)

“1 My God, my God, why have you forsaken me?

Why are you so far from saving me, from the words of my groaning?

20 my God, I cry by day, but you do not answer, and by night, but I find no rest”

Have you ever felt like this? You have prayed and prayed to God to find peace, but it seems like he’s not answering. Storms and waves crash down on you from each side. You’re drowning in your sorrows and can’t find the light. Situations will arise like the death of a loved one, your loss of a job, your can’t make this month’s rent, the one person you believe you could trust betrays you.

Overtime, situations like these keep happening and you feel lost, like a ship lost out at sea.

You think to yourself, “how can I ever find peace in this raging sea?”

Hope.

Hebrews 6:19-20 describes a hope that is sure and never-ending. It is our anchor in the storm and raging sea. Whatever may be happening in our lives, we know that Jesus is in control and will never let go of us. He has in the palm of his hands and just like anchors, he will keep us secure and, in a place, where we know we are safe and secure in his loving arms.

Hebrews 6:19-20  
(ESV)

“19 We have this as a sure and steadfast anchor of the soul, a hope that enters into the inner place behind the curtain, 20 where Jesus has gone as a forerunner on our behalf, having become a high priest forever after the order of Melchizedek”





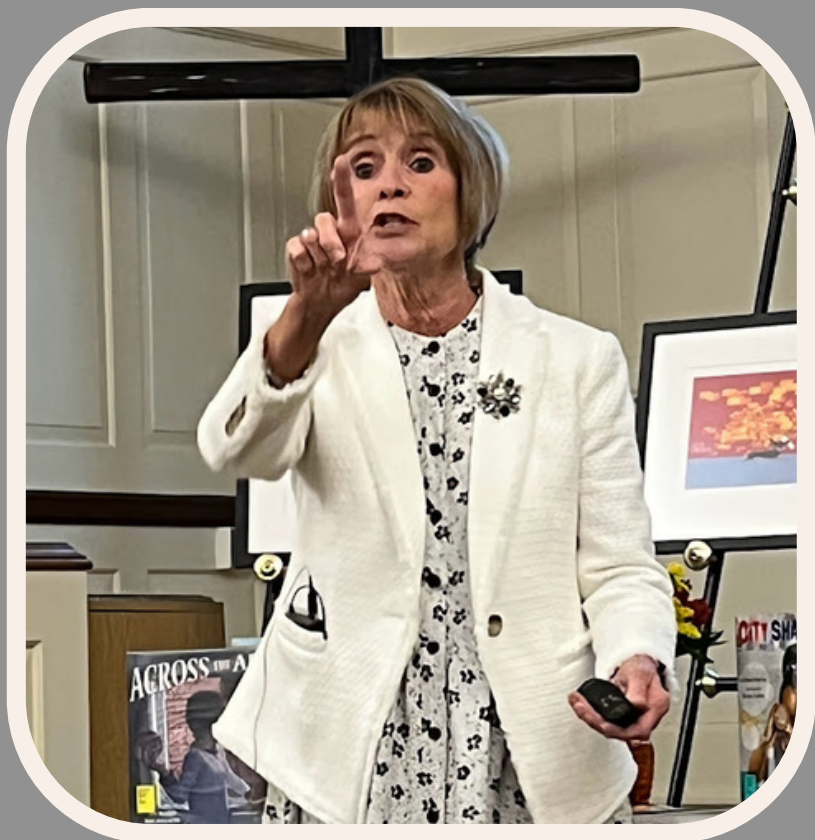
# Guest Speaker Michele Struss

On November 28th, Professor Burchard's Worth Narratives FYS class got to hear from guest speaker, Michele Struss. Michele talked about her life and her journey as a Christian painter. Michele's challenges along the way are a great example of adversity moving someone closer to Christ.

Her art is centered around the various names, images, and roles of God. For more information please visit her website: <https://www.hispaintbrush.com>



# A Peek Through the Looking Glass: Why Children's Books Matter



On Friday November 4th we welcomed Dr. Anita Voelker to Campus for the annual Friends of the Murray Library Dinner. In her presentation, "A Peek Through the Looking Glass: Why Children's Books Matter," Anita discussed how most readers have one particular children's book that sustained them in childhood and fortified them in adulthood.



# HEARD IN THE CLASSROOM

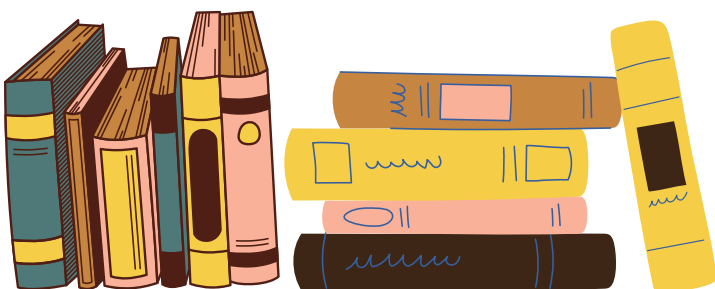
*What are we talking  
about this month?*



## Lily Womer

First Year  
PreK-4 Education Major

"I am learning so many fun things this semester, I love my First Year Seminar class worth narratives taught by professor Burchard, we discuss the worth of different characters in books and how that narrative changes and how that reflects the worth of ourselves. This class has reinforced my identity in God and has made me more confident in my college life."





# DR. DAVID HAZEN

PROFESSOR SPOTLIGHT

Office: Boyer 411 Email: dhazen@messiah.edu

## EDUCATIONAL BACKGROUND

Ed.D. Curriculum and Instruction, Walden University, St. Paul, MN  
Course work toward Ph.D. History, Marquette University, Milwaukee, WI  
M.A. Social Studies Education, University of St. Thomas, St. Paul, MN  
B.A. History, Winona State University, Winona, MN

## CLASSES I TEACH

EDUC 342 Social Studies: Climate, Curriculum, and Instruction for Elementary School  
EDUC 331 Instructional Design and Assessment for Middle and Secondary Grades  
EDUC 305 Middle-Level Methods  
EDUC 203 Educational Psychology

## SERVICE

Assessment of Student Learning Committee  
Teacher Education Committee  
Education Recruitment Committee  
Northern York High School Basketball and Football Booster Clubs

## RESEARCH INTERESTS

Substitute Teaching  
Technology in Education

## FAVORITE SCRIPTURE VERSE AND WHY

Romans 12:15-18 "Rejoice with them that do rejoice, and weep with them that weep. Be of the same mind one toward another. Mind not high things, but condescend to men of low estate. Be not wise in your own conceits. Recompense to no man evil for evil. Provide things honest in the sight of all men. If it be possible, as much as lieth in you, live peaceably with all men."  
This verse always reminds me to be compassionate for others' struggles and seek to do good to all peoples at all times. Living in peace is a struggle that we all meet head-on daily. When evil raises its head as it will, it is our calling to not consider ourselves better than others, to be honest with one another, and as much as it depends upon my efforts, to live at peace with all men.

## FAVORITE TEACHING MOMENT

My favorite teaching moment happens every spring when my social studies methods class create the Messiah University student Museum. Students take "artifacts" from their rooms and create a "museum" in a day. Students tell the story of what it is like to be a Messiah University student using artifacts from their rooms to tell a collective story. I am always amazed at how the students can tell such a complete account of what it means to be a student using only items gathered from their rooms and cars.

## WHAT I LOVE MOST ABOUT MESSIAH

I will say that, besides the students, working with my fellow professors in the Education and Teacher Education Departments is such a joy. Having such a dedicated group of people who are genuinely interested in making our students the best they can be makes coming into work each day a blessing. Each of the professors has their unique talents and approaches, giving students a well-rounded experience. Likewise, we support each other in our research and professional practice while also pushing each other to give our very best. My hope and prayer are that we exhibit a dedicated professional learning community for our students to emulate in their future professional practices.

## IF I WASN'T A PROFESSOR I WOULD BE...

A barista. I have a strong affinity for excellent coffee and espresso.

## HIDDEN TALENTS

I love to fish, especially fly fishing. Additionally, I love to sing 1970's country music (David Allen Coe, Waylon Jennings, Merle Haggard) and Classic Rock (Thin Lizzy, ZZ Top, Dire Straits) by myself in my car!



# A Polar Party

WITH THE HELP OF HER CHILDREN'S LITERATURE STUDENTS, DR. FISCHER HOSTED AN ANUAL CHRISTMAS PARTY FOR FACULTY'S FAMILIES THIS SEASON. FAMILIES ENJOIED GAMES, CRAFTS, SNACKS, AND A SPECIAL READING OF "THE POLAR EXPRESS."





# Dr. Keller Speaks to the Women of Solly 3rd



Each semester residence halls invite faculty members to visit their floors to chat with students. Dr. Keller was invited to speak to the women of Solly 3rd. Little did they know that Dr. Keller lived on Solly 3rd as a first year student many years ago! She was thrilled to return and speak about kindness. Women created kindness rocks and shared their hopes for the rest of the semester.



# Scholarships

APPLICATIONS ARE DUE 12:00 NOON ON THE LAST THURSDAY IN FEBRUARY

## Ethel Brandt Bigham Endowed Education Award

All PK-4 and Grades 4-8 juniors with a minimum cumulative GPA of 3.60 and a desire to teach in an urban or rural setting are encouraged to apply for this approximately \$1200 award.

## Ernest L. Boyer, Sr. Teacher Scholarship

All current Teacher Education Program students (all certification programs) in their junior year with a minimum cumulative GPA of 3.60 and an outstanding record of community service and leadership are invited to apply for this \$3000 award.

## Suzanne Joy Johnson Endowed Scholarship Award

All current Teacher Education Program students (preference given to PK-4 and Grades 4-8 majors) in their junior year with a minimum cumulative GPA of 3.60 and demonstrated dynamic interpersonal skills are invited to apply for this award (approximately \$1300).

## Terry L. Stoudnour Endowed Education Award

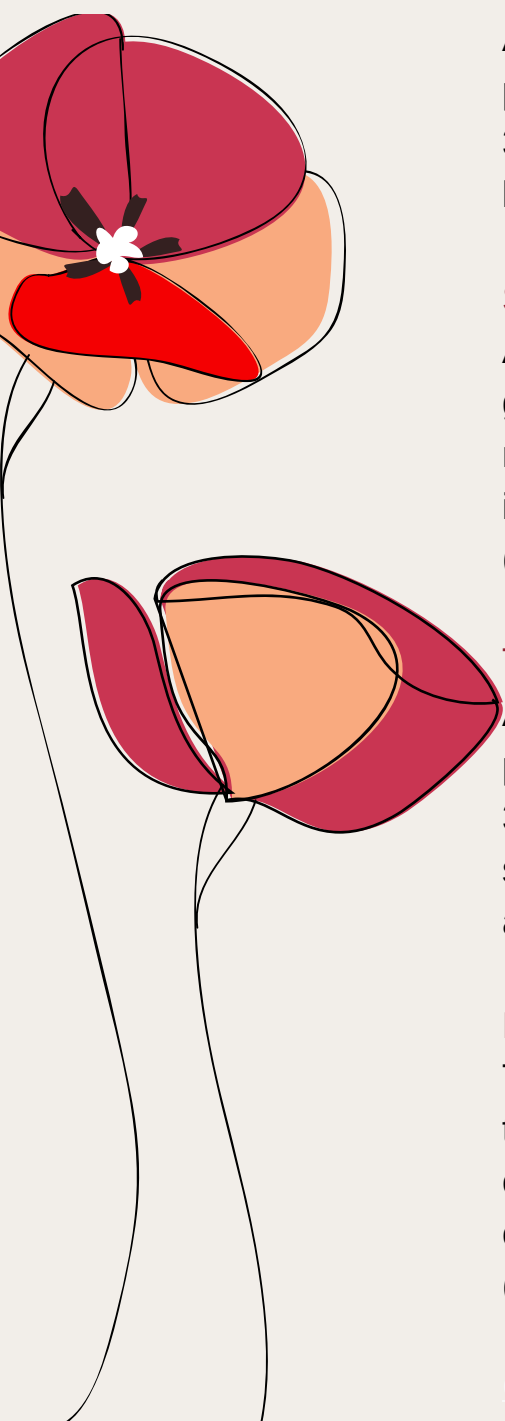
All current Teacher Education Program students (all certification programs) in their junior year with a minimum cumulative GPA of 3.60, an exemplary record of leadership, service, ethical standards, and academic achievement are invited to apply for this approximately \$1400 award.

## Murk-Hayes Endowed Education Award

The award is open to candidates of any Messiah University teacher certification program and seeks to recognize a teacher certification candidate who has a demonstrated interest and capacity for serving K-12 educators in urban contexts (approximately \$1000).

[Click Here for the applications](#)

All of these awards are add-on awards. They will be added to, not substituted for, any financial aid the recipient already receives. Award amounts may vary slightly, based on market performance.





# eSTEAM Saturday



**What an amazing day that took place a few weeks ago here on Messiah's campus. Students and their families joined the Messiah TESOL and Education team to learn about composting, adventure through the Oakes Museum, and create in nature! Thank you to all who came and all who helped make this day possible!**



**"eSTEAM Saturday was such a fun day for me. We started off with a little lesson about composting and the impact we can make by cutting down on trash. After that, we headed over to the Oakes Museum to look around and learn more about the food chain. We had lunch at Lottie, which I really enjoyed because I got to bond with the kiddos who I was spending the day with! In the afternoon, we had it down to the Breeches to make art out of the items we found in nature. Overall, it was such a fun day and I loved getting to meet some new friends!" —Makenna Dietz**



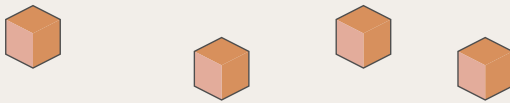


# MATH MANIPULATIVES AND CULTURAL RESPONSIVENESS

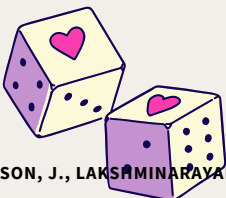
DR. CAROL BUCKLEY

IN MATH CLASS, WE USE MANIPULATIVES TO PROGRESS THROUGH STAGES OF THE CRA PROCESS: CONCRETE, REPRESENTATIONAL, ABSTRACT. CRA IS GROUNDED IN OUR THEORIES ABOUT CHILD DEVELOPMENT. IN THE 1960S, BRUNER DESCRIBED “STAGES OF REPRESENTATION” WHICH IS STILL CONSIDERED TO BE VALID TODAY (PATTAN, N.D.). IN THESE “STAGES OF REPRESENTATION”, CHILDREN PROGRESSED THROUGH VARIOUS LEVELS TO SUPPORT THEIR UNDERSTANDING (PATTAN, N.D.). FIRST, THEY LEARNED THROUGH MOVEMENT AND ACTION, ANALOGOUS TO CONCRETE MANIPULATION OF OBJECTS (PATTAN, N.D.). THEN, THEY COULD TRANSFER THAT UNDERSTANDING TO LEARNING THROUGH PICTURES (REPRESENTATIONAL) (PATTAN, N.D.). FINALLY, THEY WERE ABLE TO DEMONSTRATE THAT LEARNING BY USE OF SYMBOLS (I.E. +, -, X) THAT REPRESENTED THE INFORMATION (ABSTRACT) (PATTAN, N.D.). CRA IS ONE OF THE MOST COMMON AND VALUED TEACHING STRATEGIES IN OUR MATH CLASSES TODAY.

I’D LIKE TO FOCUS JUST ON THE CONCRETE MANIPULATIVES HERE. MANIPULATIVES ARE THE TOOLS OF MATH THAT ARE SOMETIMES FUN TO PLAY WITH YET HAVE SUCH AN IMPORTANT ROLE. WE MOVE THEM AROUND TO BUILD A STRONG FOUNDATION AND DEMONSTRATE OUR UNDERSTANDING ABOUT ALMOST ANY MATH CONCEPT. MANIPULATIVES HAVE COME A LONG WAY DURING MY TEACHING CAREER. IT COULD BE ANYTHING FROM CM CUBES, MULTI-LINK BLOCKS, TEDDY BEAR COUNTERS, TWO-COLORED COUNTERS, TEN-FRAMES, BASE-TEN BLOCKS, SPINNERS, ETC. HOWEVER, I’M A FAN OF USING SOMEWHAT ATYPICAL MANIPULATIVES. FOR INSTANCE, MY FAVORITE MANIPULATIVE IS BUTTONS. MY FASCINATION WITH BUTTONS GOES BACK DECADES. AS A YOUNG CHILD I WOULD PLAY WITH MY MOTHER’S BUTTON BOX WHILE SHE SEWED, AND IT MAKES ME SMILE WHEN I USE THEM IN MATH CLASS. IT IS A PART OF MY HERITAGE, MY CULTURE, MY IDENTITY. I’VE USED BUTTONS AS A COUNTER TO DEMONSTRATE QUANTITY OR MAGNITUDE, AS PART OF A SORT, ALIKE/DIFFERENT ACTIVITY, SIZE COMPARISON, AND FOR USE IN DEVELOPING MATH VOCABULARY SUCH AS ORDINAL NUMBERS, ABOVE, BELOW, LAST, BEFORE, AFTER, ETC.



IN YOUR CLASSROOM, I URGE YOU TO CONSIDER THE VALUE OF USING ATYPICAL MANIPULATIVES, ESPECIALLY SOMETHING STUDENTS PROVIDE. CONSIDER A BYOM (BRING YOUR OWN MANIPULATIVE) DAY, WHERE STUDENTS BRING A MANIPULATIVE FROM HOME (ALLINGER & KERNS (2022); MUNSON, LAKSHMINARAYANA, AND RODNEY 2022). YOU MIGHT JUST OPEN A WINDOW INTO THEIR WORLD. STUDENTS COULD BRING 20 PENNIES, TOY CARS, OR CEREAL PIECES. THEN PAY ATTENTION TO WHAT THEY BRING; LISTEN TO THE STORIES THEY TELL ABOUT IT. THEY WILL FEEL SO VALUED! MOST STUDENTS WILL PUT A LOT OF THOUGHT INTO THEIR SELECTION, AND IT WILL OFTEN REVEAL WHAT IS IMPORTANT TO THEM OR SOMETHING ABOUT THEIR CULTURE. THIS SIMPLE ACT HELPS STUDENTS TO REALIZE THAT THEIR WORLD OUTSIDE OF THE 60 MINUTES SPENT IN MATH CLASS IS STILL PACKED FULL OF MATHEMATICAL IDEAS AND CONTENT. IT ALSO REVEALS INFORMATION TO YOU, THEIR TEACHER, ABOUT THEIR CULTURE AND LIVES. IT HELPS YOU CONNECT WITH THEM AS A PERSON, AND TO BE AWARE OF AND RESPONSIVE TO THEIR CULTURE.



ALLINGER, R. & KERNS, C. (2022) ACTIVE LEARNING ONLINE PLC. MESSIAH UNIVERSITY.

MUNSON, J., LAKSHMINARAYANA, G., & RODNEY, T. (OCTOBER, 2022). CULTURAL RESPONSIVENESS AND MATHEMATICAL PRACTICES. MATHEMATICS TEACHER: LEARNING & TEACHING PK-12. VOLUME 115. ISSUE 10, PP. 698-706.

PENNSYLVANIA DEPARTMENT OF EDUCATION: BUREAU OF SPECIAL EDUCATION, PENNSYLVANIA TRAINING AND TECHNICAL ASSISTANCE NETWORK (PATTAN) (N.D.). CONCRETE-REPRESENTATIONAL-ABSTRACT: INSTRUCTIONAL SEQUENCE FOR MATHEMATICS. WWW.FACEBOOK.COM/PATTANPUBLICATIONS.



# Do you want to be a teacher?

## Then you need to take educational psychology!

Messiah University is offering a dual enrollment educational psychology course next year in both the fall and spring semesters. If you want to be a teacher, you should take it.

If you want to be a teacher, one of the required courses you will need to take is Educational Psychology. A standard introductory or general psychology course may not count toward degree or licensure requirements. Educational Psychology is a required course at the following colleges and universities: **Messiah University**, Penn State, Grove City, IUPA, Wilkes, Pitt, Temple, Kutztown, Gettysburg, Susquehanna, University of Scranton, Bucknell, LVC, Dickinson, Villanova, Geneva, Eastern, Lafayette, Swarthmore, Drexel and many more. Instruction will be delivered online, providing an opportunity for you to learn alongside Messiah undergraduate students. **Get a head start today on your journey toward becoming a teacher!**

- Available during fall and spring semesters
- Earn credits towards your teaching degree
- Learn alongside on-campus students
- Asynchronous delivery with on-campus learning opportunities

### Questions?

Contact: Matt Reitnour

Associate Director of Admissions/Coordinator of Dual Enrollment

Email: mreitnour@messiah.edu | Call: 717-691-6000



### Benefits of being dual enrolled at Messiah University

- Create a more flexible schedule as a college student
- Strengthen your potential to graduate from college in less than 4 years
- Experience college life by taking classes taught by Messiah University professors
- Take college courses that may satisfy both high school and college credit requirements

22\_1360



# TECHNOLOGY CORNER

*Our Favorite Online Resources and Tools*

TECH TOOL: MICROSOFT  
TRANSLATOR

*Dr. Christina Simmons*



## Microsoft Translator



Having the ability to translate information from English to another language is not just for those teachers who have English language learners in their classrooms. There are many English proficient students whose parents/guardians may not know English. It is the right of these parental individuals to access the same information and participate in the same level of school interactions as the English proficient parents/guardians.

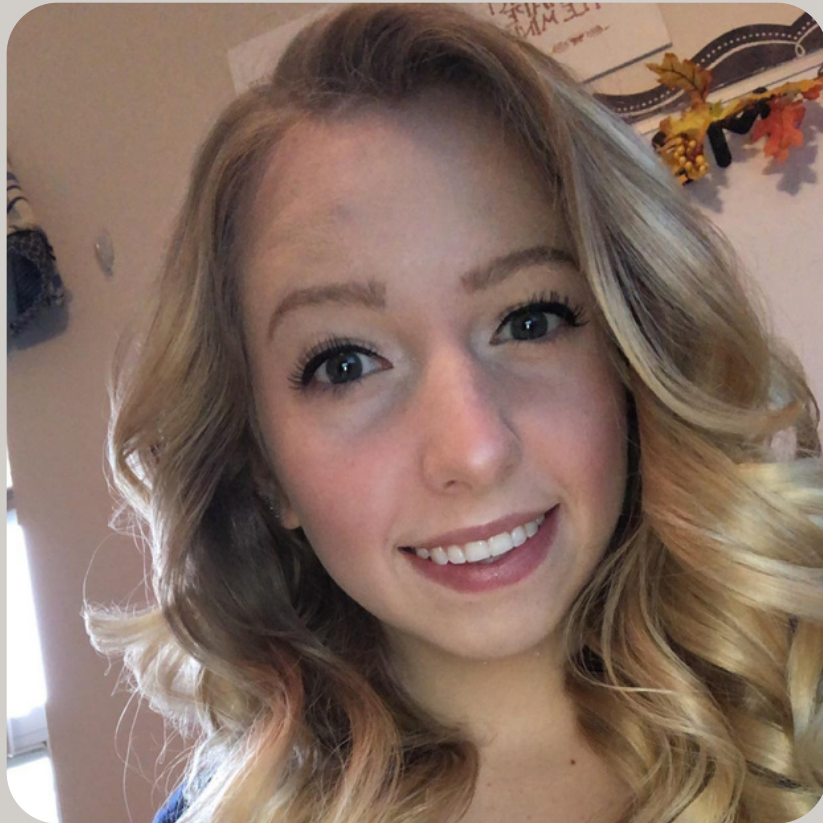
While schools are required to offer interpreters to parents/guardians who speak a language other than English, sometimes parents/guardians show up for emergency meetings or without indicating they need an interpreter and they are met with the challenge of communicating with school personnel. One tool that I have successfully used in the past in these types of scenarios is Microsoft Translator. While no technology translator is ideal, this particular tool allows an individual to talk in his/her native language into a computer or phone. The tool then translates the oral conversation into a text-based conversation in the recipient's native language. The ability to record an oral conversation allows for a more free flowing conversation. One can access the tool through the app or from the website. A final and unique feature is the ability to hold a multilingual conversation. I held a conversation with a Spanish speaker and Arabic speaker at the same time where they were able to read what I was saying and equally contribute to the conversation in their native languages.



# ALUMNI ADVICE

LESSONS FROM MESSIAH ALUM

---



## ALUMNI PROFILE

---

*Amanda  
Maye Kirk*

CLASS OF 2020

---

Mariana Bracetti Academy  
Philadelphia, PA

---

3rd Grade Special Education

## ADVICE FOR FUTURE TEACHERS

There are going to be parents, students, other educators, administrators, and community members who treat your students as less than. Never be afraid to stand up for each student and show their worth. Every single student is able; show them that they have worth and that they are so loved and appreciated by you.





# Upcoming Events

MARK YOUR CALENDARS

## DECEMBER

December 12-15-Finals Week

December 16-Jan 8-Winter Break

- Show God's Love
- Sleep
- Play with your pets
- Love your family
- Read a good book

HAPPY BIRTHDAY to... Dr. Obed Mfum-Mensah  
December 23

December 25-Celebrate

Would you like to contribute to our newsletter? Do you have an idea for an article? We would love to hear from current students or Messiah Alumni!

Email ideas to [tkeller@messiah.edu](mailto:tkeller@messiah.edu)



FOLLOW US



Scan the Code to Read Past Issues of the Newsletter:

**MESSIAH UNIVERSITY**  
Teacher Education Program  
facebook.com

**Special Education Messiah University**  
facebook.com

**Messiah University TESOL**  
Messiah University TESOL. 298 likes. A page featuring stories of current and former TESOL students and faculty. Information on job and service opportunities...

**Messiah University Educ. Dept...**  
Instagram photos and videos  
instagram.com

