





## RESEARCH ARTICLE

# Seychelles warblers with silver spoons: Juvenile body mass is a lifelong predictor of annual survival, but not annual reproduction or senescence

Thomas J. Brown<sup>1</sup>  | Hannah L. Dugdale<sup>2</sup>  | Martijn Hammers<sup>2</sup>  | Jan Komdeur<sup>2</sup> | David S. Richardson<sup>1,3</sup> 

<sup>1</sup>School of Biological Sciences, University of East Anglia, Norwich, UK

<sup>2</sup>Groning Institute for Evolutionary Life Sciences, University of Groningen, Groningen, The Netherlands

<sup>3</sup>Nature Seychelles, Victoria, Mahé, Seychelles

## Correspondence

Thomas J. Brown and David Richardson, School of Biological Sciences, University of East Anglia, Norwich, UK.

Email: [tom.j.brown@uea.ac.uk](mailto:tom.j.brown@uea.ac.uk) (T.J.B.) and [david.richardson@uea.ac.uk](mailto:david.richardson@uea.ac.uk) (D.R.)

## Funding information

Biotechnology and Biological Sciences Research Council, Grant/Award Number: BB/M011216/1; Natural Environment Research Council, Grant/Award Number: NE/K005502/1, NE/F02083X/1, NE/I021748/1 and NE/R0115/2002/00712; Nederlandse Organisatie voor Wetenschappelijk Onderzoek, Grant/Award Number: 854.11.003, 863.15.020 and NWO-ALW 823.01.014

## Abstract

The environment experienced during development, and its impact on intrinsic condition, can have lasting outcomes for individual phenotypes and could contribute to variation in adult senescence trajectories. However, the nature of this relationship in wild populations remains uncertain, owing to the difficulties in summarizing natal conditions and in long-term monitoring of individuals from free-roaming long-lived species. Utilizing a closely monitored, closed population of Seychelles warblers (*Acrocephalus sechellensis*), we determine whether juvenile body mass is associated with natal socio-environmental factors, specific genetic traits linked to fitness in this system, survival to adulthood, and senescence-related traits. Juveniles born in seasons with higher food availability and into smaller natal groups (i.e., fewer competitors) were heavier. In contrast, there were no associations between juvenile body mass and genetic traits. Furthermore, size-corrected mass—but not separate measures of natal food availability, group size, or genetic traits—was positively associated with survival to adulthood, suggesting juvenile body mass is indicative of natal condition. Heavier juveniles had greater body mass and had higher rates of annual survival as adults, independent of age. In contrast, there was no association between juvenile mass and adult telomere length attrition (a measure of somatic stress) nor annual reproduction. These results indicate that juvenile body mass, while not associated with senescence trajectories, can influence the likelihood of surviving to old age, potentially due to silver-spoon effects. This study shows that measures of intrinsic condition in juveniles can provide important insights into the long-term fitness of individuals in wild populations.

## KEYWORDS

aging, avian, body mass, juvenile condition, senescence, silver-spoon, wild population

## TAXONOMY CLASSIFICATION

Applied ecology; Conservation ecology; Evolutionary ecology; Life history ecology; Population ecology

This is an open access article under the terms of the [Creative Commons Attribution](https://creativecommons.org/licenses/by/4.0/) License, which permits use, distribution and reproduction in any medium, provided the original work is properly cited.

© 2022 The Authors. *Ecology and Evolution* published by John Wiley & Sons Ltd.

## 1 | INTRODUCTION

Senescence—defined as the decline in fitness-related traits with advancing age—is widespread across the tree of life (Jones et al., 2014). However, longitudinal studies have demonstrated that, even within the same species, individuals can show considerable variation in their onset and rate of senescence in natural environments (Nussey, Froy, Lemaître, Gaillard, & Austad, 2013; Williams et al., 2006). Identifying drivers of this individual variation is vital for understanding the causes and evolution of senescence. Environmental exposure during development—from conception to maturity—is of particular importance in modulating adult phenotypes (Lindström, 1999; Taborsky, 2006; Vaiserman, Koliada, & Lushchak, 2018). However, there remains uncertainty regarding how differences in developmental environment and/or condition affect senescence.

Body mass and derived indices (e.g., size-corrected mass) are commonly used measures of individual condition in ecological studies. Body mass has a strong positive correlation with body fat content—the main component of energy storage—and the structural size of individuals (Hayes & Shonkwiler, 2010; Labocha and Hayes, 2012a; Schulte-Hostedde, Zinner, Millar, & Hickling, 2005). In juveniles, being heavier, fatter, and larger often reduces vulnerability to predation (at least in non-flying organisms—see below), food-shortages, and cold-weather events, and can provide a competitive advantage over peers (Arendt, 1997). Higher body mass is associated with factors that improve the quality of natal socioenvironmental conditions, such as higher food abundance, provisioning effort, and lower densities of competitors (e.g., Bebbington et al., 2017a,b; Mumme, Bowman, Pruett, & Fitzpatrick, 2015). Furthermore, high juvenile body mass is often linked to beneficial genetic traits, such as heterozygosity (e.g., Coltman, Bowen, & Wright, 1998) and immune gene diversity (Arct et al., 2017; Coltman et al., 1998; Kim, Fargallo, Vergara, & Martínez-Padilla, 2013; Lukasch et al., 2017). As a result, it is common for juvenile body mass to be positively associated (directly and/or indirectly) with survival to adulthood, at least in birds and mammals (Ronget et al., 2018; Tinbergen & Boerlijst, 1990).

There has been extensive debate concerning the quantification of condition (Frauendorf et al., 2021; Green, 2001; Labocha & Hayes, 2012; Labocha, Schutz, & Hayes, 2014; Speakman, 2001; Stevenson & Woods, 2006; Wilder, Raubenheimer, & Simpson, 2016), and it is agreed that simple positive correlations between natal environment, body mass, condition, and fitness cannot be assumed without validation. For example, individuals may retain more fat (resulting in greater body mass) in response to less plentiful and/or predictable food supplies (Cuthill et al., 2000; Marshall et al., 2017). Furthermore, excessive fat deposition (i.e., high body mass relative to size) can reduce an individual's ability to evade predators, especially for flying organisms (Covas, Brown, Anderson, & Brown, 2002; Gosler, Greenwood, & Perrins, 1995). Therefore, the “optimal” body mass (i.e., that which corresponds to highest condition) may be less

than the maximum achievable body mass (Barnett, Suzuki, Sakaluk, & Thompson, 2015).

Juvenile body mass, and the factors associated with it, can have lasting effects on adult condition and fitness (e.g., Bowers et al., 2014). Factors that restrict the normal fat deposition and growth rates of juveniles, such as adverse natal environments, generally have negative fitness outcomes (Hsu, Dijkstra, & Groothuis, 2017; Metcalfe & Monaghan, 2001; Seress, Sándor, Evans, & Liker, 2020). For example, in captive zebra finches (*Taeniopygia guttata*) juveniles reared on poor-quality diets have lower body mass, but also lower reproductive success (Blount et al., 2006; Haywood & Perrins, 1992) and shorter adult life spans (Birkhead, Fletcher, & Pellatt, 1999). Conversely, better natal socioenvironmental conditions, which tend to contribute positively to juvenile mass, can benefit multiple fitness-related traits in adulthood (Cooper & Kruuk, 2018; Lindström, 1999; Pettorelli et al., 2002); a phenomenon referred to as the “silver-spoon effect” (Monaghan, 2008). Furthermore, since mass is often positively associated with beneficial genetic and immunological traits, juvenile body mass can be indicative of long-term individual quality (Gaillard, Festa-Bianchet, Delorme, & Jorgenson, 2000; Gleeson, Blows, & Owens, 2005; Sakaluk et al., 2015).

Associations between juvenile body mass and adult fitness mean that juvenile body mass could also be informative of adult fitness late in life. For example, silver-spoon effects can result in delayed (or reduced) senescence when the fitness benefits persist into late life (Cooper & Kruuk, 2018; Nussey, Kruuk, Morris, & Clutton-Brock, 2007; Pigeon, Festa-Bianchet, & Pelletier, 2017). Furthermore, where body mass is linked to individual quality, higher mortality rates of lower quality adults (i.e., selective disappearance) would result in a positive relationship between juvenile body mass and longevity (Bowers et al., 2014; Nussey, Coulson, Festa-Bianchet, & Gaillard, 2008). Alternatively, juvenile body mass can be negatively associated with longevity and late-life fitness due to trade-offs with early-life fitness (e.g., Hunt et al., 2004; Spagopoulou et al., 2020). A greater allocation of resources into growth and reproduction during early adult life can be costly to somatic maintenance and, consequently, later-life fitness (Hammers, Richardson, Burke, & Komdeur, 2013; Kirkwood, 1977; Lemaître et al., 2014). Hence, juveniles that are heavier/larger, or that have grown at faster rates can have reduced fitness in late life (Kraus, Pavard, & Promislow, 2013; Metcalfe & Monaghan, 2003; Miller, Harper, Galecki, & Burke, 2002). Likewise, in contrast to silver-spoon effects, harsh or restrictive natal environments can generate more resilient adult phenotypes (e.g., “thrifty phenotype hypothesis”; Hales & Barker, 2001) or remove individuals with less-resilient phenotypes at younger ages (selection hypothesis; Nol & Smith, 1987), resulting in individuals that are more resistant to fitness declines in late life (Marshall et al., 2017).

One proposed mechanism by which both natal adversity and growth investments can accelerate senescence is telomere attrition. Telomeres are repetitive nucleotide sequences at the ends of chromosomes, which protect the functional integrity of the genome.

In many taxa, telomeres shorten progressively with age (Barrett, Burke, Hammers, Komdeur, & Richardson, 2013; Bendix et al., 2014; Stier, Reichert, Criscuolo, & Bize, 2015) and with increased exposure to various stressors (Chatelain, Drobniak, & Szulkin, 2020; Sudyka, 2019; Young, 2018). Furthermore, shorter telomeres and/or faster rates of telomere attrition are frequently associated with increased mortality risk (Barrett et al., 2013; Fairlie et al., 2016; Vera, Bernardes de Jesus, Foronda, Flores, & Blasco, 2012). Hence, telomere length has been advocated as a marker of life-history costs to somatic maintenance (Wilbourn et al., 2018; Young, 2018). Both natal adversity and greater investments in early-life growth tend to be associated with accelerated telomere shortening (reviewed in Monaghan & Ozanne, 2018). Therefore, juvenile body mass/growth and linked natal factors can have long-term somatic costs, and thus contribute to senescence.

Most previous studies concerned with the impact of natal conditions on senescence use proxies of food availability or closely related factors (e.g., population density and weather) to summarize natal environment. A recent meta-analysis of such studies found that good natal environments are more often associated with slower rates of reproductive (but not survival) senescence in wild populations; suggesting persistent silver-spoon effects are more prevalent (or detectable) than early- versus late-life fitness trade-offs (Cooper & Kruuk, 2018). However, natal condition is a multifaceted concept, involving a suite of both extrinsic and intrinsic factors, which is unlikely to be captured by a limited number of broad-scale environmental measures. As discussed, juvenile body mass in wild populations can reflect multiple aspects of the natal environment, individual quality, and physiological determinants of survival, for example, energy stores. However, surprisingly few studies have assessed whether natural variation in juvenile body mass is associated with long-term fitness or senescence; perhaps owing to the difficulty of monitoring individuals across their entire life course in most wild populations (but see Lewin, Swanson, Williams, & Holekamp, 2017).

In this study, we determine whether the body mass of juveniles predicts senescence-related traits in adult Seychelles warblers, *Acrocephalus sechellensis*—a small insectivorous passerine endemic to the Seychelles. The closely monitored, closed population on Cousin Island is uniquely suited for this study; each individual has annual measures of survival and reproduction, and repeated measures of condition starting from juvenile age. Furthermore, this system benefits from extensive environmental, social, genetic, and physiological data from which the relative contributions of factors to juvenile body mass can be determined. Specifically, we explore the relationship between juvenile body mass and survival to adulthood while accounting for differences in natal food availability, group size, and important genetic traits. Second, we determine whether juvenile body mass is predictive of declines in condition (body mass and telomere length) and fitness (annual survival and reproduction) in late life. This study will contribute to our understanding of the role that natal condition plays on individual variation in senescence in wild populations.

## 2 | METHODS

### 2.1 | Study species and data collection

The Seychelles warbler is a small insectivorous passerine endemic to the Seychelles. The population on Cousin Island (29 ha; 4°20'S, 55°40'E)—containing ca. 320 adult individuals at any given point (Brouwer et al., 2009)—has been extensively monitored since 1985 (Hammers et al., 2015; Komdeur, 1992; Sparks et al., 2020a). Since 1997, nearly all individuals (>96%) have been ringed with a unique combination of a British Trust for Ornithology (BTO) metal ring and three color rings for easy identification (Raj Pant et al., 2020a; Richardson, Jury, Blaakmeer, Komdeur, & Burke, 2001). Individuals are usually first caught as nestlings, or as dependent juveniles (<5 months old) in their natal territory using mist nets (see Kingma, Komdeur, Hammers, & Richardson, 2016 for details). Juveniles are aged as fledglings (1–3 months), old fledglings (3–5 months), or sub-adults (5–8 months) based on behavior and eye color (Komdeur, 1992). In addition to capturing unringed juveniles, as much of the ringed adult population as possible (normally ca. 35%) is re-captured and sampled during the major breeding season (June–September) each year.

The population is structured into ca. 115 clearly defined territories (Kingma et al., 2016), each containing a socially monogamous dominant pair. However, the Seychelles warbler is a facultative cooperative breeder; thus, ca. 50% of territories contain 1–5 sexually mature subordinates (which are usually, but not always, past offspring of the dominant pair), of which ca. 20% of males and ca. 42% of females engage in helping behavior and cobreeding (Hammers et al., 2019; Richardson, Komdeur and Burke, 2003b). Each year, during the major breeding season, each territory is visited at least every 2 weeks to identify all individuals present and determine their status through behavioral observations (Richardson, Burke and Komdeur, 2003a). During visits, the dominant female is followed for ≥15 min to assess breeding activity (Richardson, Burke, & Komdeur, 2007). The majority of breeding activity (94% of territories) occurs from June to August, but a minor breeding season also occurs from January to March (Komdeur & Daan, 2005). Most breeding attempts involve one-egg clutches (Komdeur, 1994a) but clutches of two or three eggs occur (Richardson et al., 2001). The extensive duration of parental care (ca. 3 months post-fledging), relative to the length of breeding seasons, limits the opportunity for multiple successful breeding attempts (Komdeur, 1996b). As a result, the majority of successful territories produce just one clutch per breeding season.

In both males and females, annual reproductive success follows a bell-shaped relationship with age; increasing until 6–8 years-of-age before declining in older age (Hammers, Richardson, Burke, & Komdeur, 2012; Raj Pant et al., 2020a). The resighting probability of adults during the major breeding season is close to one ( $0.98 \pm 0.01$  SE; Brouwer et al., 2010) and dispersal from the island is virtually absent (Komdeur et al., 2004). Therefore, individuals that are not observed during the major breeding season can be confidently assumed

dead. First-year survival is  $0.61 \pm 0.09$  SE, increasing to a relatively stable  $0.84 \pm 0.04$  SE annual survival in adults (Brouwer, Richardson, Eikenaar, & Komdeur, 2006), before declining from ca. 7 years-of-age, that is, the onset of survival senescence (Hammers et al., 2013, 2015). In elderly females, reproductive success is also lower in the last year of life ("Terminal year effect"), suggesting that elderly females are in poorer physiological condition prior to death (Hammers et al., 2012).

During capture events, body mass is measured using either a Pesola or electronic scale ( $\pm 0.1$  g) and structural size is measured using sliding calipers ( $\pm 0.1$  mm) as the length of the right tarsus. Approximately 25  $\mu$ l of blood is taken from the brachial vein and stored in 100% ethanol (Richardson et al., 2001). DNA extracted from blood samples (following Richardson et al., 2001) is used to confirm sex, using up to three sexing markers, and assign parentage using MasterBayes 2.52 (Hadfield et al., 2006) based on genotypes derived from 30 microsatellite loci (for details see Sparks et al., 2020b). Genetic parentage was used to calculate reproductive success of adults, since estimates based on parental behavior (i.e., incubating, provisioning) are confounded by high rates of extra-pair paternity (ca. 41%; Raj Pant, Komdeur, Burke, Dugdale, & Richardson, 2019) and co-breeding among dominant and subordinate helper females (Bebbington et al., 2018; Richardson et al., 2001). Genetic parentage is an underestimation of reproductive success since we excluded offspring for which parents could not be assigned (c. 15% of offspring) and some offspring are likely to have died before being sampled (Edwards, Burke, & Dugdale, 2017). Relative Telomere Length (RTL; the concentration of amplified telomeric DNA relative to that amplified at GAPDH – a single copy gene) has also been measured as part of a previous study (for details see Spurgin et al., 2018). As with many other species, Seychelles warbler telomere length declines with age and with increased exposure to various stressors (Barrett et al., 2013; Spurgin et al., 2018).

In most years of the study (except 2000–2002 and 2005), the availability of food was calculated per territory per field season (following Komdeur, 1992). Briefly, the number of arthropods (on the undersides of leaves) was multiplied by the percentage cover of broad-leaf vegetation within territories. From this data, we calculated two metrics of food availability, (1) island food availability—mean arthropod abundance across territories during the juvenile's natal field season, and (2) local food availability—arthropod abundance within the juvenile's natal territory. Local food availability was corrected for seasonal differences in overall food availability by subtracting island food availability; thus, positive/negative values of local food availability represent above/below-average arthropod abundance in the natal territory, respectively, relative to seasonal arthropod abundance. For each natal territory, we also calculated group size (i.e., the number of resident individuals) as a measure of local density, reflecting the intensity of local competition (Brouwer et al., 2006).

## 2.2 | Statistical analysis

All analyses were performed in RStudio (version 1.2.5033 and R version 4.0.3, Rstudio Team, 2020). We selected all individuals with

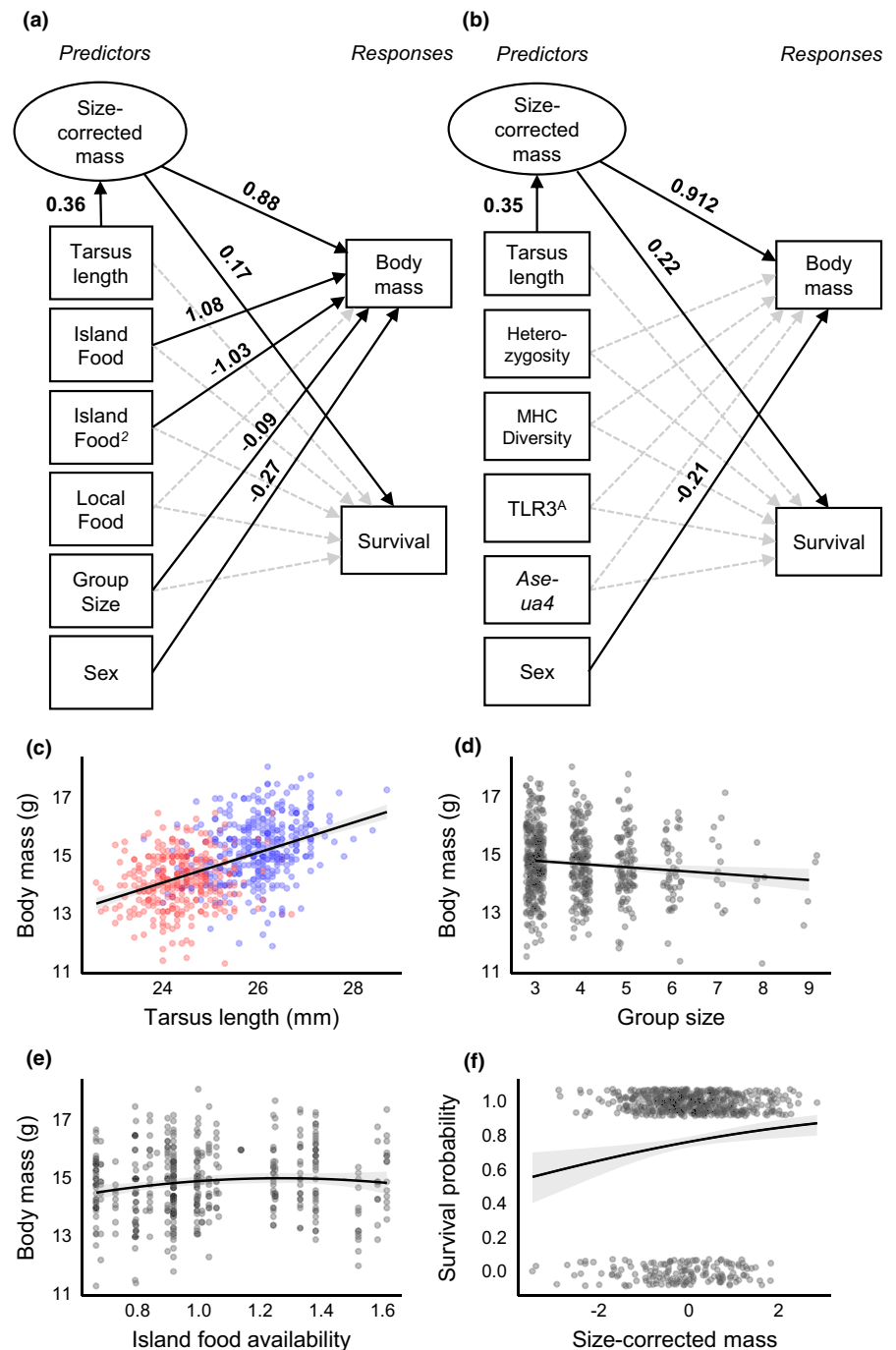
biometric data at post-fledging juvenile age (3 weeks to 5 months after hatching). This is just after the developmental period when skeletal growth is complete (Komdeur, 1991), when juveniles are still dependent on the adults from the natal territory, and before sexual maturity (ca. 8 months; Komdeur, 1997). The Seychelles warbler is sexually dimorphic, with males being larger than females (Safford, 2013). Body mass, as well as being higher in males than females, is also positively correlated with structural size (tarsus length; Kingma et al., 2016).

## 2.3 | Juvenile body mass and survival

To conceptualize juvenile condition in terms of body mass and natal socioenvironmental factors, we used a structural equation model (SEM) or path analysis (package lavaan v0.6-10; Rosseel, 2012), as advocated by Frauendorf et al., 2021. Specifically, we determined the relative contributions of body mass, food availability (island and local), and group size to juvenile survival, and (for food availability and group size) whether contributions to survival occurred directly and/or indirectly via associations with body mass (see Figure 1a). These factors were included due to previously reported associations with Seychelles warbler survival (Brouwer et al., 2006; Hammers et al., 2013). The benefit of a SEM approach over multiple regression models is that juvenile body mass can be a response (i.e., regressed on other variables) and predictor of juvenile survival simultaneously (Figure 1). This removes the need to extract residuals from one regression model to be repurposed as a predictor in a second regression model—a practice which has received extensive criticism (Freckleton, 2002; Green, 2001). For instance, since body mass is often positively correlated with structural size, past studies have regularly used residuals from body mass regressed on size measures as a condition index, with the expectation that this "size-corrected" mass better reflects an individual's energy store, that is, fat and protein content (Labocha and Hayes, 2012a; Schulte-Hostedde et al., 2005). In contrast, within our SEM-model, we use a latent variable—a theoretical construct for which we have no direct measure (Grace, Anderson, Olff, & Scheiner, 2010)—termed "size-corrected mass" to estimate the relationship between juvenile body mass and survival while accounting for the effect of size (tarsus length) on mass (see Frauendorf et al., 2021 for detail). We also included a squared function for island food availability as both extreme low and high values (indicating drought and high rainfall, respectively) during the natal season are expected to be detrimental to juvenile body mass and survival (Brouwer et al., 2006). We used the maximum likelihood estimation WLSMV to account for the binomial error structure of juvenile survival, defined as whether or not the individual survived to  $>1$  year-of-age. So that the strengths of different paths could be compared, we calculated standardized coefficients which are estimates expressed in equivalent units (Figure 1).

As well as investigating the effects of natal socioenvironmental factors, we were interested in whether juvenile body mass, survival, or the body mass–survival relationship were influenced

**FIGURE 1** SEM models of natal intrinsic and extrinsic condition in juvenile Seychelles warblers. (a) and (b) are graphical representations of paths between measured variables (in boxes) and the latent variable size-corrected mass (in oval). Black arrows symbolize significant ( $p < 0.05$ ) paths, with values of standardized coefficients shown next to each line. Standardized coefficients are estimates expressed in equivalent units so that the strengths of different paths can be compared. Grey broken arrows symbolize non-significant paths. Model (a) incorporates socio-environmental factors ( $n = 428$ ), while model (b) incorporates genetic traits previously associated with Seychelles warbler survival and fitness ( $n = 233$ ). Plots (c), (d), (e) and (f) visualize significant relationships of interest as estimated by the SEM (a). The fit lines are regressions - linear in (c) and (d), quadratic in (e) and binomial in (f) - between y- and x-axes, with 95% confidence limits. Points are raw data, which in (c) are red for males and blue for females. Y-axis in (f) is the probability of surviving to  $> 1$  year of age (Y/N)



by specific genetic factors. For a smaller subset of individuals in our dataset (233 of 428), information on overall and immunological genetic diversity was available, specifically; heterozygosity, MHC diversity, and the presence of TLR3<sup>A</sup> and MHC *Ase-ua4* alleles (yes/no). These traits have been associated with juvenile survival and individual fitness in earlier studies on this species (Brouwer et al., 2010; Davies et al., 2021; Richardson, Komdeur, & Burke, 2004). Using a similar approach as described above, these factors were incorporated into a SEM-model with juvenile body mass and survival as response variables (Figure 1b). We opted to build a separate SEM-model (i.e., not including socio-environmental factors from the previous model) for genetic traits

due to a lack of complete data ( $n = 118$ ), and thus concerns of over-parameterization.

## 2.4 | Juvenile body mass, adult body mass, and telomere length

The following analyses on juveniles that survived to adulthood involve testing specific interactions between predictors and the incorporation of random effects (e.g., to account for repeated measures within-individuals), neither of which are easily accommodated by SEM packages that form latent variables (Frauendorf et al., 2021).

Hence, the following analyses were conducted using linear and generalized linear mixed models (package lme4 v1.1-25; Bates, Mächler, Bolker, & Walker, 2015). We also use juvenile body mass rather than size-corrected mass as our marker of juvenile condition due to the aforementioned criticisms regarding the use of residuals as predictors (Freckleton, 2002; Green, 2001). Nonetheless, tarsus length was included as a control (i.e., predictor) in all analyses.

First, we determined whether juvenile body mass was associated with two measures of adult condition—body mass and RTL—and or their age-dependent declines, that is, physiological senescence. Both traits were fitted as responses in two Linear Mixed Models (LMM). Juvenile body mass, adult tarsus length, and sex were included as main effects. In the RTL model, we also included technician identity as a two-level factor to account for personnel-related differences in RTL (Sparks et al., 2020b). We used within-subject centering (van de Pol & Wright, 2009) to separate the role of between- versus within-individual variation with age, that is, cross-sectional from longitudinal effects. In this way, the individual's age (at measurement of body mass/telomere length) was split into two predictors, (i) mean age across all sampling events for a given individual (mean age), and (ii) within-individual deviation from mean age ( $\Delta$ age). An interaction term between juvenile body mass and  $\Delta$ age tested whether juvenile body mass alters the within-individual slope of adult body mass/telomere length. Since individuals often had multiple measures of adult body mass and telomere length, individual identity was included as a random effect. In the body mass model, observer identity was also included as a random effect to control for possible observer bias in measurements. In the telomere length model, PCR plate identity was included as a random effect to control for possible inter-plate variation in telomere length (Sparks et al., 2020b).

## 2.5 | Juvenile body mass, annual survival, and reproduction

We tested whether juvenile body mass was associated with two fitness components shown to senesce in later adult life in the Seychelles warbler; annual survival and annual reproduction (Hammers et al., 2012, 2013, 2015; Raj Pant et al., 2020). For this analysis, we excluded individuals that had not died by the end of the study period (2019). Furthermore, we excluded the first year of the individual's life, since first-year survival was covered in our survival to adulthood analysis (see above) and individuals rarely reproduce before 1 year-of-age (Komdeur, 1991, 1992). Annual survival was defined as whether or not the individual died before the subsequent main breeding season. Annual reproduction indicated whether the individual produced at least one independent offspring (i.e., surviving to at least 5 months of age) during that year. These fitness traits were fitted as binomial responses (yes vs. no) with a log link function in Generalized Linear Mixed Models (GLMMs). Juvenile body mass was entered as a main effect and as an interaction term with age. A significant main effect would indicate that juvenile body mass influences the fitness component overall, independently of age, while a significant interaction would indicate that juvenile body mass modifies the age-dependent

change in the fitness component. Age (at the end of the main breeding season) was included as a linear and squared term (Hammers et al., 2012; Raj Pant et al., 2020a). To confirm the presence of late-life declines in survival and reproduction, we repeated analyses including only data above the age of onset of declines; determined visually from non-standardized squared functions of age (Figures 3a and 4a). Sex and tarsus length were included as additional predictors. Since individuals had multiple measures of fitness, individual identity was included as a random factor. Year was also included as a random factor to control for annual differences in fitness (Brouwer et al., 2006).

In the annual reproduction model, additional predictors were included due to their previously reported associations with annual reproduction and fledging success in this system. An interaction term between sex and age was included due to sex-specific differences in the onset of reproductive senescence (Hammers et al., 2012; Raj Pant et al., 2020b). Since juvenile body mass is also co-dependent on sex (see Results), we performed separate male-only and female-only models to test whether age-dependent annual reproduction is influenced by juvenile body mass without the need for overly complex three-way interactions (i.e., involving sex, juvenile body mass and both linear and squared age terms). Island- and local-food availability were included (for years when these were measured) due to positive associations with fledging success (Hammers et al., 2012). Whether or not the year in question was the last year of an individual's life (terminal year, yes/no) was included, since fledging success was found to be lower in the terminal year of old ( $\geq 6$  years) females (Hammers et al., 2012). We also included age-at-death, to quantify the within-individual effect of age on reproductive success while controlling for selective disappearance (Hammers et al., 2012; van de Pol & Verhulst, 2006).

In all models, non-significant interaction terms (coefficient  $p$ -value  $< 0.05$ ) were removed sequentially (in order of least significance), so that the first-order effects could be interpreted, and were only reported if of specific interest. All fixed effects remained in final models (regardless of significance) except for squared functions of continuous variables, which were removed when non-significant (see Whittingham et al., 2006). Parameter estimates and significance of removed effects were determined by re-entering them into final models. Continuous fixed effects involved in squared effects and interactions were mean centered to reduce collinearity and aid interpretation (Schielzeth, 2010). Where model singularity errors occurred, we applied maximum a posteriori estimation using blme (v1.0-5; Dorie, 2013). Where model convergence issues occurred, we used the "BOBYQA" nonlinear optimization (Powell, 2009). Model fit was calculated as conditional  $R^2$  using MuMin (v1.43.17; Bartoń, 2019).

## 3 | RESULTS

### 3.1 | Juvenile body mass and survival

Juvenile body mass was associated with tarsus length and sex, with larger juveniles and males being heavier (Figure 1c). Juvenile body mass was also associated with natal socioenvironmental

conditions. Juveniles from smaller natal group sizes were heavier (Figure 1d) and juveniles born in seasons with moderate food availability were heavier compared juveniles born in seasons of extreme low or high food availability (Table S1; Figure 1e). In contrast, there was no relationship between local-food availability (i.e., the relative quality of the natal territory) and juvenile body mass (Figure 1a; Table S1). Of the 694 juveniles included in our analysis, 532 survived to adulthood (>1 year-of-age). Heavier juveniles (after controlling for their size) were more likely to survive to adulthood (Figure 1f). In contrast, there was no direct effect of island/local food availability or group size on survival, despite associations with body mass (Table S1). Complete data for genetic factors (heterozygosity, MHC diversity, TLR3<sup>A</sup>, and MHC *Ase-ua4* allele presence), previously shown to influence juvenile survival, were available for 240 juveniles. In our model, none of these genetic factors were associated with juvenile body mass or survival, and the observed juvenile survival–mass relationship remained significant while controlling for these genetic factors (Figure 1b; Table S1).

### 3.2 | Juvenile body mass, adult body mass, and telomere length

As expected, adult body mass was higher in males and increased with tarsus length in both sexes; in a similar manner to that observed with juvenile body mass (Table 1a). While controlling for these factors, adult body mass was positively correlated with juvenile body mass (Table 1a; Figure 2). This indicated that relatively heavier or lighter juveniles tended to remain relatively heavier or lighter, respectively, as adults. Adult body mass increased with age between individuals (i.e., cross-sectional) and not within-individuals (longitudinal). These slopes significantly differed ( $t = 2.133$ ,  $p = 0.033$ ), indicating that the between-individual rate of increase was greater than the within-individual lack of change (Table 1a). Juvenile body mass did not influence the within-individual slope of adult body mass (Table 1a;  $\Delta$  age  $\times$  Juvenile body mass).

Relative Telomere Length tended to decrease both within and between individuals with increasing age (Table 1b). The within- and between individual rate of change in RTL did not significantly differ

**TABLE 1** Linear mixed effects models explaining variation in (a) adult body mass, and (b) relative telomere length (RTL) in the Seychelles warbler

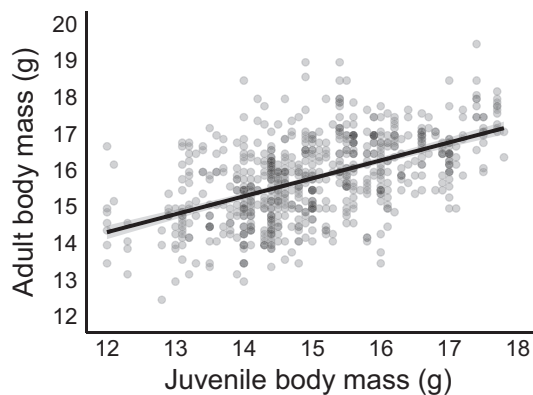
Predictor	Estimate	SE	t	P
(a) Adult body mass; conditional $R^2 = 0.602$				
(Intercept)	8.473	1.347	6.291	<0.001
<b>Juvenile body mass</b>	<b>0.212</b>	<b>0.042</b>	<b>5.033</b>	<b>&lt;0.001</b>
<b>Sex (female)</b>	<b>-0.706</b>	<b>0.108</b>	<b>-6.516</b>	<b>&lt;0.001</b>
<b>Tarsus length</b>	<b>0.292</b>	<b>0.052</b>	<b>5.615</b>	<b>&lt;0.001</b>
<b>Mean age</b>	<b>0.048</b>	<b>0.018</b>	<b>2.636</b>	<b>0.009</b>
$\Delta$ age	-0.005	0.016	-0.308	0.758
$\Delta$ age $\times$ Juvenile body mass	0.004	0.014	0.270	0.787
Random	711 observations	Variance		
Bird Identity	313 individuals	0.125		
Observer	41 observers	0.044		
Residual		0.505		
(b) Relative Telomere Length (RTL); conditional $R^2 = 0.176$				
(Intercept)	1.057	0.363	2.914	0.004
Juvenile body mass	0.009	0.011	0.835	0.406
Sex (female)	0.002	0.029	0.052	0.958
Tarsus length	-0.005	0.014	-0.356	0.722
$\Delta$ age	-0.011	0.006	-1.763	0.079
Mean age	-0.009	0.005	-1.950	0.053
<b>Technician</b>	<b>0.081</b>	<b>0.022</b>	<b>3.728</b>	<b>&lt;0.001</b>
$\Delta$ age $\times$ Juvenile body mass	0.006	0.005	1.106	0.270
<b>Random</b>	<b>427 observations</b>	<b>Variance</b>		
Bird Identity	207 individuals	0.001		
qPCR plate	70 PCR plates	0.004		
Residual		0.032		

Note: Significant effects are in bold.

( $t = -1.770$ ,  $P = 0.078$ ). Neither overall adult RTL (Table 1b) nor the within-individual decline in RTL (Table 1b;  $\Delta$  age  $\times$  Juvenile body mass) was associated with juvenile body mass. RTL was not associated with sex or tarsus length (Table 1b).

### 3.3 | Juvenile body mass, annual survival, and reproduction

Annual survival remained relatively stable at ca. 80% from one to 7 years-of-age, beyond which annual survival declined with age (Figure 3a). This decline in annual survival was confirmed by re-running the analysis with data  $\geq 7$  years-of-age ( $\beta = -0.2523 \pm 0.086$ ,  $z = -2.954$ ,  $p = 0.003$ ). Juvenile body mass was positively associated with annual survival, independent of age (Table 2a; Age  $\times$  Juvenile body mass, Figure 3b). Therefore, heavier juveniles had higher annual survival throughout adult life. Annual survival was not influenced by sex or tarsus length (Table 2a).

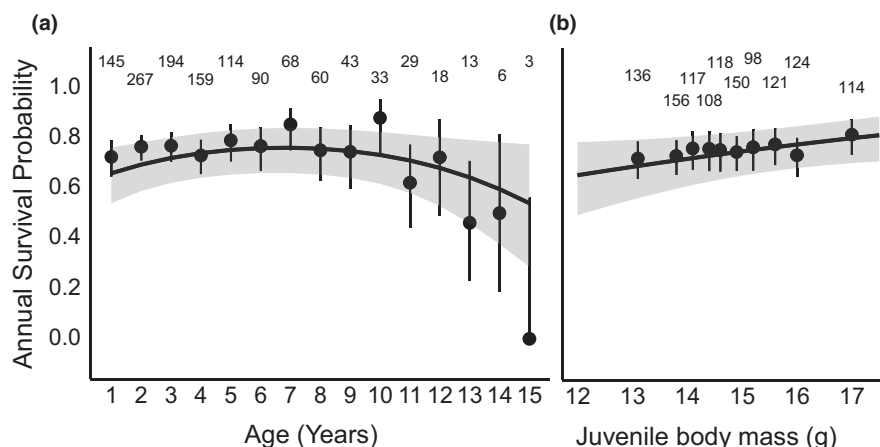


**FIGURE 2** The relationship between juvenile body mass and adult (>1 year of age) body mass in the Seychelles warbler. The fit-line is a linear regression with 95% confidence limits. Points depict raw data

Annual reproduction was not influenced by island/local food availability; thus these predictors were removed to maximize sample size ( $N = 1034$  versus  $N = 1242$ ). Annual reproduction exhibited a humped relationship with age; increasing in early life before peaking and declining from mid- to late life (Figure 4a). The age of the peak in annual reproduction (and thus the onset of reproductive senescence) differed between sexes (Figure 4a), with female and male annual reproduction peaking at ca. 6 and 8 years-of-age, respectively. Annual reproduction was also lower in the terminal year (Table 2b). Re-running the analysis on ages from the onset of reproductive senescence ( $\geq 6$  years for females,  $\geq 8$  years in males) confirmed that annual reproduction declined with advanced age, and that the slope of the decline was greatest in the terminal year (Age  $\times$  Terminal year:  $\beta = 0.979 \pm 0.396$ ,  $z = 2.471$ ,  $p = 0.013$ , Figure 4b). Neither annual reproduction nor the age-dependent change in annual reproduction was influenced by juvenile body mass in males or females (Tables 2b and S2; Age  $\times$  Juvenile body mass). Annual reproduction was not influenced by tarsus length (Table 2b).

## 4 | DISCUSSION

Juvenile body mass was positively associated with better natal socioenvironmental conditions (measured as island food availability and group size) but not with previously identified beneficial genetic traits. Furthermore, juvenile body mass (corrected for size) was, among the socioenvironmental factors and genetic traits tested, the only significant predictor of juvenile survival. For individuals that survived to adulthood, juvenile body mass was positively associated with adult body mass—indicating that individual differences in body mass are maintained from the juvenile period throughout adulthood. More importantly, the survival benefit of being heavier as a juvenile persisted into adult life. Therefore, juveniles that reached adulthood



**FIGURE 3** The probability of adult Seychelles warblers surviving to the next year relative to (a) age and (b) juvenile body mass. The fit-lines are model-predicted survival curves with 95% confidence limits. Points with error bars are mean survival and binomial 95% confidence intervals of raw data, grouped by (a) age and (b) percentiles of juvenile body mass; note that the x-axis position of points corresponds to the percentile distribution of juvenile body mass. In text numbers refer to sample sizes per age (c) and percentile of juvenile body mass (b)



**TABLE 2** General linear mixed effects models explaining variation in (a) annual survival and (b) annual reproduction in adult Seychelles warblers

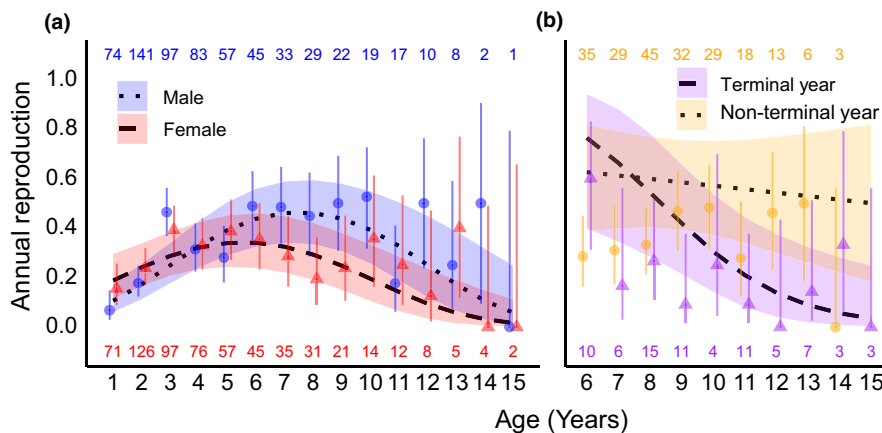
Predictor	Estimate	SE	z	P
(a) Annual survival; conditional $R^2 = 0.194$				
(Intercept)	-1.666	2.591	-0.643	0.520
<b>Age</b>	<b>0.207</b>	<b>0.098</b>	<b>2.114</b>	<b>0.035</b>
<b>Age<sup>2</sup></b>	<b>-0.132</b>	<b>0.057</b>	<b>-2.297</b>	<b>0.022</b>
<b>Juvenile body mass</b>	<b>0.172</b>	<b>0.086</b>	<b>1.997</b>	<b>0.046</b>
Sex (female)	0.399	0.211	1.895	0.058
Tarsus length	0.109	0.100	1.084	0.279
Age × Juvenile body mass	0.052	0.094	0.554	0.579
Age <sup>2</sup> × Juvenile body mass	-0.052	0.058	-0.896	0.371
Random	1242 observations	Variance		
Bird Identity	306 individuals	<0.001		
Year	21 years	0.731		
(b) Annual Reproductive Success; conditional $R^2 = 0.287$				
(Intercept)	0.415	3.245	0.128	0.898
<b>Age</b>	<b>0.856</b>	<b>0.173</b>	<b>4.938</b>	<b>&lt;0.001</b>
<b>Age<sup>2</sup></b>	<b>-0.417</b>	<b>0.093</b>	<b>-4.502</b>	<b>&lt;0.001</b>
Juvenile body mass	0.129	0.110	1.179	0.239
Sex (female)	-0.120	0.289	-0.414	0.679
Tarsus length	-0.062	0.125	-0.491	0.623
<b>Terminal year (no)</b>	<b>0.718</b>	<b>0.210</b>	<b>3.414</b>	<b>0.001</b>
Age at death	0.054	0.131	0.414	0.679
<b>Age × Sex (female)</b>	<b>-0.596</b>	<b>0.205</b>	<b>-2.909</b>	<b>0.004</b>
Age <sup>2</sup> × Sex (female)	0.071	0.134	0.531	0.595
Males: Age × Juvenile body mass	0.028	0.162	0.175	0.861
Males: Age <sup>2</sup> × Juvenile body mass	-0.172	0.099	-1.734	0.083
Females: Age × Juvenile body mass	0.325	0.225	1.447	0.148
Females: Age × Juvenile body mass	0.020	0.214	0.095	0.924
Random	1242 observations	Variance		
Bird Identity	306 individuals	0.486		
Year	21 years	0.358		

Note: Significant effects are in bold. See Table S2 for sex-specific analysis of annual reproductive success.

despite being lighter still had poorer survival in a given year compared to adults that were heavier as juveniles. The effect of juvenile body mass on annual survival was constant with age, that is, the age-dependent decline in survival from 7 years-of-age observed in this species did not change with respect to juvenile body mass. Thus, while heavier juveniles are more likely to reach older ages, they still exhibit a similar pattern of survival senescence as those individuals that were lighter as juveniles. There was no observable effect of juvenile body mass on annual reproductive success, nor the maintenance of adult telomere length.

The finding that body mass is positively associated with a juvenile's likelihood of surviving to adulthood in the Seychelles warbler is consistent with findings across birds and mammals (reviewed in Ronget

et al., 2018). Our findings suggest high juvenile body mass is indicative of better natal socioenvironmental conditions, which subsequently leads to higher survival. Similarly, previous studies investigating the effects of cooperative breeding in the Seychelles warbler indicate that juveniles receiving nest care from helpers (in addition to parental care) have higher provisioning rates, juvenile body mass, and survival rates than juveniles without helpers (van Boheemen et al., 2019; Hammers et al., 2021; Komdeur, 1994). Similarly, between-population comparisons of this species suggest that individual body mass on Cousin Island is primarily constrained by food availability and/or population density (Brouwer et al., 2009). Furthermore, experimental studies demonstrate that manipulations of natal/early-life environments have similar outcomes for juvenile mass/condition and survival in other species



**FIGURE 4** The probability of adult Seychelles warblers producing an independent offspring in a year relative to age and (a) sex and (b) terminal year (yes/no). The fit-lines are model predicted probability curves with 95% confidence limits. Points with error bars are mean annual reproduction and binomial 95% confidence intervals of raw data, grouped by age per sex (a) and age per terminal year (b). In text numbers refer to the sample sizes per age per grouping variable. Males and females had differing onsets of decline in annual reproduction (a), and the rate of decline was greatest in the terminal year (b)

(e.g., Grace, Froud, Meillère, & Angelier, 2017; Le Galliard, Ferrière, & Clobert, 2005). Variation in juvenile body mass can also reflect genetic differences which, subsequently, contribute to survival. However, we did not find evidence of this in our study.

Direct benefits of being heavier can also occur where this reflects more abundant energy stores (i.e., fat and protein), since newly independent juveniles lacking experience can be more vulnerable to starvation and exposure (e.g., Jones, Ward, Benson, & Brawn, 2017). Our findings indicate that juvenile body mass is more strongly associated with survival than socioenvironmental factors and known-genetic traits, which suggests a direct effect of juvenile body mass on survival, perhaps mediated by energy storage. However, body mass (correct for size) can also reflect differences in bodily components other than fat content, such as muscle and organ mass (Labocha and Hayes, 2012a) and genetic constraints. The benefits of high body mass or more abundant energy stores can be traded against increased predation risk, resulting in a body mass–survival relationship that becomes negative with increasing body mass (Adriaensen, Dhondt, Dongen, Lens, & Matthysen, 1998; Blums, Nichols, Hines, Lindberg, & Mednis, 2005). In contrast to these systems, we found that this body mass–survival relationship did not become negative, which was expected given that post-fledging predation does not occur in this population (Komdeur, 1996a). Therefore, high juvenile body mass, by reflecting better socioenvironments and survival prospects, is indicative of natal condition in this system.

Juvenile body mass was positively correlated with adulthood body mass in the Seychelles warbler, independently of permanent mass constraints such as sex and structural size. This indicates that between-individual differences in the variable component of juvenile mass (e.g., fat, muscle) are partially maintained across an individual's lifetime. Similar within-individual consistencies between juvenile and adult mass have been observed in other bird species (Guillemain, Green, Simon, & Gauthier-Clerc, 2013; Merilä & Svensson, 1997). Previous studies on adult Seychelles

warblers have shown that mass is lost during energy-demanding reproductive behaviors (Bebbington, Kingma, Fairfield, Dugdale, et al., 2017a; Komdeur, 2001; van de Crommenacker, Komdeur, & Richardson, 2011). Therefore, heavier juveniles may be better able to maintain or recover lost energy reserves (i.e., mass) in adult life, perhaps contributing to heavier juveniles also having higher rates of annual survival observed in this study. Conversely, achieving high juvenile body mass at the expense of other physiological components could have negative consequences for adult condition. One potential trade-off is a greater rate of telomere shortening in early life, resulting in shorter telomere lengths in adulthood (Monaghan & Ozanne, 2018). In many systems, including the Seychelles warbler, short telomeres and/or greater telomere shortening in adulthood also reflects more stressful life histories and reduced survival prospects (Barrett et al., 2013; Hammers et al., 2019; Monaghan & Ozanne, 2018; Wilbourn et al., 2018). However, we found no association between juvenile body mass and adult telomere length, which suggests that the initial benefit of high juvenile body mass does not have long-term physiological costs, at least when measured with telomere length. This is perhaps not surprising given recent findings in this system demonstrating that telomere dynamics are strongly influenced by the current life-history pressures faced by the individual (e.g., malarial infections) and thus may poorly reflect differences in natal condition/environment (Brown et al., 2021).

We found that the survival benefits associated with high juvenile body mass were not limited to the first year of life in the Seychelles warbler, with heavier juveniles also having higher annual survival throughout adulthood. This is consistent with our adult body mass analysis, which showed that body mass increased between individuals with age. Silver-spoon effects of early-life environment on adult survival have been observed in many wild populations (Alberts, 2019; Cartwright, Nicoll, Jones, Tatayah, & Norris, 2014; Reid, Bignal, Bignal, McCracken, & Monaghan, 2003; Van De Pol et al., 2006).

Such effects may occur because juveniles that are heavier and/or reared in better natal conditions have a competitive advantage that leads to them occupying better quality habitat as adults (Verhulst, Perrins and Riddington, 1997; Both, Visser and Verboven, 1999; Van De Pol et al., 2006). In contrast, juveniles that survive to adulthood despite poor-natal conditions may have required compensatory physiological mechanisms that have delayed survival costs (Briga, Koetsier, Boonekamp, Jimeno, & Verhulst, 2017; Metcalfe & Monaghan, 2001). Juvenile body mass may also reflect differences in intrinsic quality, and thus the longevity, through a combination of environmental (i.e., silver-spoon effects) and genetic associations (Bowers et al., 2014; Nussey et al., 2008).

The effect of juvenile body mass on annual survival also contributes to lifetime reproductive success, since this is strongly correlated with longevity in the Seychelles warbler (Davies et al., 2021). However, juvenile body mass did not affect the probability of producing offspring in a given year (after controlling for age-effects) in this species, which is in contrast to studies that have measured the effect of the natal environment on reproductive success (e.g., Douhard et al., 2014; Nussey et al., 2007). In the warbler system, individual breeding attempts are strongly constrained by population density (i.e., limited availability of breeding positions) and seasonal food availability (Komdeur, 1992, 1996c). Additionally, the success of breeding attempts is likely to depend on fine-scale environmental variation, such as weather, which was not accounted for in this study. Therefore, ecological constraints and confounds may limit the detectable influence of juvenile body mass on annual reproductive success. Furthermore, the strong decline of annual reproduction in the terminal year likely means that poor condition and/or illness in the current year outweighs the effect of past condition (Hammers et al., 2012).

The effect of juvenile body mass on annual survival was constant with age and did not affect the onset or rate of survival senescence. This is consistent with a recent meta-analysis that found that the quality of early-life environments was not associated with survival senescence across 18 wild populations (Cooper & Kruuk, 2018). One explanation is that the majority of juveniles that experience poor natal conditions, or are themselves in poor condition, die before reaching senescent age (the age at which a population exhibits reduced survival), while the few individuals that reach old age share traits that mask the effects of natal factors ("selection hypothesis"; Nol & Smith, 1987; Dugdale et al., 2011). Another possibility is that the potential silver-spoon effect of juvenile body mass is not associated with early-life investments (e.g., growth, reproductive effort) that have delayed costs for late-life performance (Hunt et al., 2004; Spagopoulou et al., 2020). For example, (Hammers et al., 2013) identified in this species a trade-off between early-life reproductive effort and late-life survival; individuals that start breeding at earlier ages had an earlier onset of survival senescence. In contrast, our findings suggest that investments in early adult life (in terms of age-specific annual reproduction) are not associated with juvenile body mass. Therefore, juvenile body mass may fail to generate such

resource allocation trade-offs (i.e., between early-life reproductive effort and somatic maintenance) that influence senescence patterns.

Our study shows that a juvenile's body mass can be a marker of persistent individual differences in adult condition and performance. This finding reinforces the hypothesis that factors contributing to natal condition can have individual fitness consequences beyond juvenile survival. While juvenile body mass may not predict individual differences in senescence rates, juvenile body mass can be positively associated with longevity, and thus the likelihood of reaching the age at which senescence occurs in wild populations.

#### AUTHOR CONTRIBUTIONS

**Thomas James Brown:** Conceptualization (equal); formal analysis (lead); investigation (lead); methodology (lead); writing – original draft (lead). **Hannah Dugdale:** Conceptualization (supporting); data curation (supporting); funding acquisition (equal); methodology (supporting); supervision (supporting); writing – review and editing (supporting). **Martijn Hammers:** Funding acquisition (supporting); methodology (supporting); writing – review and editing (supporting). **Jan Komdeur:** Funding acquisition (equal); writing – review and editing (equal). **David Richardson:** Conceptualization (equal); formal analysis (equal); funding acquisition (equal); investigation (equal); methodology (equal); supervision (lead); writing – original draft (equal); writing – review and editing (equal).

#### ACKNOWLEDGMENTS

We thank Nature Seychelles for facilitating fieldwork on Cousin Island. This study would not have been possible without the contribution of many fieldworkers, laboratory technicians, students, and database managers during the whole study period. T.J.B was funded by the UKRI Biotechnology and Biological Sciences Research Council Norwich Research Park Biosciences Doctoral Training Partnership (BB/M011216/1). The long-term Seychelles warbler study was funded by the Natural Environment Research Council (NERC) grants to D.S.R and H.L.D (NER/I/S/2002/00712, NE/I021748/1, NE/F02083X/1, NE/K005502/1), and NWO grants from the Dutch Science Council (NWO) to J.K., with D.S.R. and H.L.D. (NWO-ALW 823.01.014, 854.11.003). M.H was funded by NWO VENI Fellowship (863.15.020).

#### CONFLICT OF INTERESTS

None declared.

#### DATA AVAILABILITY STATEMENT

The data that support the findings are openly available in Dryad Digital Repository <https://doi.org/10.5061/dryad.ttdz08m1z>

#### ORCID

Thomas J. Brown  <https://orcid.org/0000-0002-4235-0856>

Hannah L. Dugdale  <https://orcid.org/0000-0001-8769-0099>

Martijn Hammers  <https://orcid.org/0000-0002-6638-820X>

David S. Richardson  <https://orcid.org/0000-0001-7226-9074>

## REFERENCES

- Adriaenssens, F., Dhondt, A. A., Dongen, S. V., Lens, L., & Matthysen, E. (1998). Stabilizing selection on blue tit fledgling mass in the presence of sparrowhawks. *Proceedings of the Royal Society B: Biological Sciences*, 265, 1011–1016. <https://doi.org/10.1098/rspb.1998.0392>
- Alberts, S. C. (2019). Social influences on survival and reproduction: Insights from a long-term study of wild baboons. *Journal of Animal Ecology*, 88(1), 47–66. <https://doi.org/10.1111/1365-2656.12887>
- Arct, A., Sudyka, J., Podmokła, E., Drobniak, S. M., Gustafsson, L., & Cichoń, M. (2017). Heterozygosity–fitness correlations in blue tit nestlings (*Cyanistes caeruleus*) under contrasting rearing conditions. *Evolutionary Ecology*, 31(5), 803–814. Springer International Publishing. <https://doi.org/10.1007/s10682-017-9911-6>
- Arendt, J. D. (1997). Adaptive intrinsic growth rates: An integration across taxa. *Quarterly Review of Biology*, 72(2), 149–177. <https://doi.org/10.1086/419764>
- Barnett, C. A., Suzuki, T. N., Sakaluk, S. K., & Thompson, C. F. (2015). Mass-based condition measures and their relationship with fitness: In what condition is condition? *Journal of Zoology*, 296, 1–5. Blackwell Publishing Ltd. <https://doi.org/10.1111/jzo.12213>
- Barrett, E. L. B., Burke, T. A., Hammers, M., Komdeur, J., & Richardson, D. S. (2013). Telomere length and dynamics predict mortality in a wild longitudinal study. *Molecular Ecology*, 22(1), 249–259. <https://doi.org/10.1111/mec.12110>
- Bartoń, K. (2019). MuMIn: Multi-Model Inference. R package version 1.43.6. <https://cran.r-project.org/web/packages/MuMIn/>
- Bates, D., Mächler, M., Bolker, B., & Walker, S. (2015). Fitting linear mixed-effects models using lme4. *Journal of Statistical Software*, 67(1), 1–48. <https://doi.org/10.18637/jss.v067.i01>
- Bebbington, K., Kingma, S. A., Fairfield, E. A., Spurgin, L. G., Komdeur, J., & Richardson, D. S. (2017). Consequences of sibling rivalry vary across life in a passerine bird. *Behavioral Ecology*, 28(2), 407–418. Oxford Academic. <https://doi.org/10.1093/beheco/arw167>
- Bebbington, K., Kingma, S. A., Fairfield, E. A., Dugdale, H. L., Komdeur, J., Spurgin, L. G., & Richardson, D. S. (2017). Kinship and familiarity mitigate costs of social conflict between Seychelles warbler neighbors. *Proceedings of the National Academy of Sciences of the United States of America*, 114(43), E9036–E9045. <https://doi.org/10.1073/pnas.1704350114>
- Bebbington, K., Fairfield, E. A., Spurgin, L. G., Kingma, S. A., Dugdale, H., Komdeur, J., & Richardson, D. S. (2018). Joint care can outweigh costs of nonkin competition in communal breeders. *Behavioral Ecology*, 29(1), 169–178. <https://doi.org/10.1093/beheco/axx137>
- Bendix, L., Thinggaard, M., Fenger, M., Kolvraa, S., Avlund, K., Linneberg, A., & Osler, M. (2014). Longitudinal changes in leukocyte telomere length and mortality in humans. *The Journals of Gerontology Series A Biological Sciences and Medical Sciences*, 69(2), 231–239. <https://doi.org/10.1093/gerona/glt153>
- Birkhead, T. R., Fletcher, F., & Pellatt, E. J. (1999). Nestling diet, secondary sexual traits and fitness in the zebra finch. *Proceedings of the Royal Society B: Biological Sciences*, 266(1417), 385–390. <https://doi.org/10.1098/rspb.1999.0649>
- Blount, J. D., Metcalfe, N. B., Arnold, K. E., Surai, P. F., & Monaghan, P. (2006). Effects of neonatal nutrition on adult reproduction in a passerine bird. *Ibis*, 148(3), 509–514. <https://doi.org/10.1111/j.1474-919X.2006.00554.x>
- Blums, P., Nichols, J. D., Hines, J. E., Lindberg, M. S., & Mednis, A. (2005). Individual quality, survival variation and patterns of phenotypic selection on body condition and timing of nesting in birds. *Oecologia*, 143(3), 365–376. Springer. <https://doi.org/10.1007/s00442-004-1794-x>
- van Boheemen, L. A., Hammers, M., Kingma, S. A., Richardson, D. S., Burke, T., Komdeur, J., & Dugdale, H. L. (2019). Compensatory and additive helper effects in the cooperatively breeding Seychelles warbler (*Acrocephalus sechellensis*). *Ecology and Evolution*, 9(5), 2986–2995. John Wiley and Sons Ltd. <https://doi.org/10.1002/ece3.4982>
- Bowers, E. K., Hodges, C. J., Forsman, A. M., Vogel, L. A., Masters, B. S., Johnson, B. G. P., Johnson, L. S., Thompson, C. F., & Sakaluk, S. K. (2014). Neonatal body condition, immune responsiveness, and hemocrit predict longevity in a wild bird population. *Ecology*, 95(11), 3027–3034. <https://doi.org/10.1890/14-0418.1.Neonatal>
- Briga, M., Koetsier, E., Boonekamp, J. J., Jimeno, B., & Verhulst, S. (2017). Food availability affects adult survival trajectories depending on early developmental conditions. *Proceedings of the Royal Society B: Biological Sciences*, 284(1846), 1–8. <https://doi.org/10.1098/rspb.2016.2287>
- Brouwer, L., Richardson, D. S., Eikenaar, C., & Komdeur, J. (2006). The role of group size and environmental factors on survival in a cooperatively breeding tropical passerine. *Journal of Animal Ecology*, 75(6), 1321–1329. <https://doi.org/10.1111/j.1365-2656.2006.01155.x>
- Brouwer, L., Tinbergen, J. M., Both, C., Bristol, R., Richardson, D. S., & Komdeur, J. (2009). Experimental evidence for density-dependent reproduction in a cooperatively breeding passerine. *Ecology*, 90(3), 729–741. John Wiley & Sons, Ltd. <https://doi.org/10.1890/07-1437.1>
- Brouwer, L., Barr, I., Martijn, P., Burke, T., Komdeur, J. A. N., & Richardson, D. S. (2010). MHC-dependent survival in a wild population: Evidence for hidden genetic benefits gained through extra-pair fertilizations. *Molecular Ecology*, 19(16), 3444–3455. John Wiley & Sons, Ltd. <https://doi.org/10.1111/j.1365-294X.2010.04750.x>
- Brown, T. J., Spurgin, L. G., Dugdale, H. L., Komdeur, J., Burke, T., & Richardson, D. S. (2021). Causes and consequences of telomere lengthening in a wild vertebrate population. *Molecular Ecology*. John Wiley and Sons Inc. <https://doi.org/10.1111/mec.16059>
- Cartwright, S. J., Nicoll, M. A., Jones, C. G., Tatayah, V., & Norris, K. (2014). Anthropogenic natal environmental effects on life histories in a wild bird population. *Current Biology*, 24(5), 536–540. <https://doi.org/10.1016/j.cub.2014.01.040>
- Chatelain, M., Drobniak, S. M., & Szulkin, M. (2020). 'The association between stressors and telomeres in non-human vertebrates: A meta-analysis. *Ecology Letters*. Edited by J. Cote. Blackwell publishing Ltd, 381–398. <https://doi.org/10.1111/ele.13426>
- Coltman, D. W., Bowen, W. D., & Wright, J. M. (1998). Birth weight and neonatal survival of harbour seal pups are positively correlated with genetic variation measured by microsatellites. *Proceedings of the Royal Society B: Biological Sciences*, 265(1398), 803–809. <https://doi.org/10.1098/rspb.1998.0363>
- Cooper, E. B., & Kruuk, L. E. B. (2018). Ageing with a silver-spoon: A meta-analysis of the effect of developmental environment on senescence. *Evolution Letters*, 2(5), 460–471. Wiley. <https://doi.org/10.1002/evl3.79>
- Covas, R., Brown, C. R., Anderson, M. D., & Brown, M. B. (2002). Stabilizing selection on body mass in the sociable weaver *Philetairus socius*. *Proceedings of the Royal Society B: Biological Sciences*, 269(1503), 1905–1909. <https://doi.org/10.1098/rspb.2002.2106>
- van de Crommenacker, J., Komdeur, J., & Richardson, D. S. (2011). Assessing the cost of helping: The roles of body condition and oxidative balance in the Seychelles warbler (*Acrocephalus sechellensis*). *PLoS One*, 6(10), e26423. <https://doi.org/10.1371/journal.pone.0026423>
- Cuthill, I. C., Maddocks, S. A., Weall, C. V., & Jones, E. K. (2000). Body mass regulation in response to changes in feeding predictability and overnight energy expenditure. *Behavioral Ecology*, 11(2), 189–195. Oxford Academic. <https://doi.org/10.1093/beheco/11.2.189>
- Davies, C., Taylor, M., Hammers, M., Burke, T., Komdeur, J., Dugdale, H., & Richardson, D. (2021). Contemporary evolution of the viral-sensing TLR3 gene in an isolated vertebrate population. *Authoria*

- Preprints. <https://doi.org/10.22541/AU.160992924.47833640/V1>
- Dorie, V. (2013). blme: Bayesian Linear Mixed-Effects Models. R package version 1.0-1. <http://CRAN.R-project.org/package=blme>
- Douhard, M., Plard, F., Gaillard, J. M., Capron, G., Delorme, D., Klein, F., Duncan, P., Loe, L. E., & Bonenfant, C. (2014). Fitness consequences of environmental conditions at different life stages in a long-lived vertebrate. *Proceedings of the Royal Society B: Biological Sciences*, 281(1785) Royal Society, 20140276. <https://doi.org/10.1098/rspb.2014.0276>
- Dugdale, H. L., Pope, L. C., Newman, C., Macdonald, D. W., & Burke, T. (2011). Age-specific breeding success in a wild mammalian population: Selection, constraint, restraint and senescence. *Molecular Ecology*, 20(15), 3261–3274. John Wiley & Sons, Ltd. <https://doi.org/10.1111/j.1365-294X.2011.05167.x>
- Edwards, H. A., Burke, T., & Dugdale, H. L. (2017). Repeatable and heritable behavioural variation in a wild cooperative breeder. *Behavioral Ecology*, 28(3), 668–676. <https://doi.org/10.1093/beheco/axr013>
- Fairlie, J., Holland, R., Pilkington, J. G., Pemberton, J. M., Harrington, L., & Nussey, D. H. (2016). Lifelong leukocyte telomere dynamics and survival in a free-living mammal. *Aging Cell*, 15(1), 140–148. <https://doi.org/10.1111/acel.12417>
- Frauendorf, M., Allen, A. M., Verhulst, S., Jongejans, E., Ens, B. J., Kolk, H. J., Kroon, H., Nienhuis, J., & Pol, M. (2021). Conceptualizing and quantifying body condition using structural equation modelling: A user guide. *Journal of Animal Ecology*, 90(11), 2478–2496. <https://doi.org/10.1111/1365-2656.13578>
- Freckleton, R. P. (2002). On the misuse of residuals in ecology: Regression of residuals vs. multiple regression. *Journal of Animal Ecology*, 71(3), 542–545. <https://doi.org/10.1046/j.1365-2656.2002.00618.x>
- Gaillard, J. M., Festa-Bianchet, M., Delorme, D., & Jorgenson, J. (2000). Body mass and individual fitness in female ungulates: Bigger is not always better. *Proceedings of the Royal Society of London. Series B*, 267(1442), 471–477. <https://doi.org/10.1098/rspb.2000.1024>
- Le Galliard, J. F., Ferrière, R. and Clobert, J. (2005) 'Juvenile growth and survival under dietary restriction: Are males and females equal?', *Oikos*. John Wiley & Sons, Ltd, 111(2), pp. 368–376. <https://doi.org/10.1111/j.0030-1299.2005.14163.x>
- Gleeson, D. J., Blows, M. W., & Owens, I. P. F. (2005). Genetic covariance between indices of body condition and immunocompetence in a passerine bird. *BMC Evolutionary Biology*, 5(1), 1–9BioMed Central. <https://doi.org/10.1186/1471-2148-5-61>
- Gosler, A. G., Greenwood, J. J. D., & Perrins, C. (1995). Predation risk and the cost of being fat. *Nature*, 377(6550), 621–623. Chapman & Hall. <https://doi.org/10.1038/377621a0>
- Grace, J. B., Anderson, T. M., Olf, H., & Scheiner, S. M. (2010). On the specification of structural equation models for ecological systems. *Ecological Monographs*, 80(1), 67–87. <https://doi.org/10.1890/09-0464.1>
- Grace, J. K., Froud, L., Meillère, A., & Angelier, F. (2017). House sparrows mitigate growth effects of post-natal glucocorticoid exposure at the expense of longevity. *General and Comparative Endocrinology*, 253, 1–12. Academic Press Inc. <https://doi.org/10.1016/j.ygcen.2017.08.011>
- Green, A. J. (2001). Mass/length residuals: Measures of body condition or generators of spurious results? *Ecology*, 82(5), 1473–1483. [https://doi.org/10.1890/0012-9658\(2001\)082\[1473:MLRMOB\]2.0.CO;2](https://doi.org/10.1890/0012-9658(2001)082[1473:MLRMOB]2.0.CO;2)
- Guillemain, M., Green, A. J., Simon, G., & Gauthier-Clerc, M. (2013). Individual quality persists between years: Individuals retain body condition from one winter to the next in teal. *Journal of Ornithology*, 154(4), 1007–1018. <https://doi.org/10.1007/s10336-013-0968-x>
- Hadfield, J. D., Richardson, D. S., & Burke, T. (2006). Towards unbiased parentage assignment: Combining genetic, behavioural and spatial data in a Bayesian framework. *Molecular Ecology*, 15(12), 3715–3730. <https://doi.org/10.1111/j.1365-294X.2006.03050.x>
- Hales, C. N., & Barker, D. J. (2001). The thrifty phenotype hypothesis: Type 2 diabetes. *British Medical Bulletin*, 60(1), 5–20. <https://doi.org/10.1093/bmb/60.1.5>
- Hammers, M., Richardson, D. S., Burke, T., & Komdeur, J. (2012). Age-dependent terminal declines in reproductive output in a wild bird. *PLoS One*, 7(7), e40413. <https://doi.org/10.1371/journal.pone.0040413>
- Hammers, M., Richardson, D. S., Burke, T., & Komdeur, J. (2013). The impact of reproductive investment and early-life environmental conditions on senescence: Support for the disposable soma hypothesis. *Journal of Evolutionary Biology*, 26(9), 1999–2007. <https://doi.org/10.1111/jeb.12204>
- Hammers, M., Kingma, S. A., Bebbington, K., van de Crommenacker, J., Spurgin, L. G., Richardson, D. S., Burke, T., Dugdale, H. L., & Komdeur, J. (2015). Senescence in the wild: Insights from a long-term study on Seychelles warblers. *Experimental Gerontology*, 71, 69–79. Elsevier Inc. <https://doi.org/10.1016/j.exger.2015.08.019>
- Hammers, M., Kingma, S. A., Spurgin, L. G., Bebbington, K., Dugdale, H. L., Burke, T., Komdeur, J., & Richardson, D. S. (2019). 'Breeders that receive help age more slowly in a cooperatively breeding bird. *Nature Communications*, 10(1), 1–10. <https://doi.org/10.1038/s41467-019-09229-3>
- Hammers, M., Kingma, S. A., van Boheemen, L., Sparks, A. M., Burke, T., Dugdale, H. L., Richardson, D. S., & Komdeur, J. (2021). Helpers compensate for age-related declines in parental care and offspring survival in a cooperatively breeding bird. *Evolution Letters*, Wiley, 5, 143–153. <https://doi.org/10.1002/evl3.213>
- Hayes, J. P., & Shonkwiler, J. S. (2010). Morphological indicators of body condition: Useful or wishful thinking? In J. R. Speakman (Ed.), *Body composition analysis of animals* (pp. 8–38). Cambridge University Press. <https://doi.org/10.1017/cbo9780511551741.003>
- Haywood, S., & Perrins, C. M. (1992). Is clutch size in birds affected by environmental conditions during growth? *Proceedings of the Royal Society B: Biological Sciences*, 249(1325), 195–197. <https://doi.org/10.1098/rspb.1992.0103>
- Hsu, B. Y., Dijkstra, C., & Groothuis, T. G. G. (2017). 'Organizing effects of adverse early-life condition on body mass, compensatory growth and reproduction: Experimental studies in rock pigeons. *Journal of Avian Biology*, 48(8), 1166–1176. John Wiley & Sons, Ltd. <https://doi.org/10.1111/jav.01172>
- Hunt, J., Brooks, R., Jennions, M. D., Smith, M. J., Bentsen, C. L., & Bussière, L. F. (2004). High-quality male field crickets invest heavily in sexual display but die young. *Nature*, 432(7020), 1024–1027. <https://doi.org/10.1038/nature03084>
- Jones, O. R., Scheuerlein, A., Salguero-Gómez, R., Camarda, C. G., Schaible, R., Casper, B. B., Dahlgren, J. P., Ehrlén, J., García, M. B., Menges, E. S., Quintana-Ascencio, P. F., Caswell, H., Baudisch, A., & Vaupel, J. W. (2014). Diversity of ageing across the tree of life. *Nature*, 505(7482), 169–173. <https://doi.org/10.1038/nature12789>
- Jones, T. M., Ward, M. P., Benson, T. J., & Brawn, J. D. (2017). 'Variation in nestling body condition and wing development predict cause-specific mortality in fledgling dickcissels. *Journal of Avian Biology*, 48(3), 439–447. Blackwell Publishing Ltd. <https://doi.org/10.1111/jav.01143>
- Kim, S. Y., Fargallo, J. A., Vergara, P., & Martínez-Padilla, J. (2013). Multivariate heredity of melanin-based coloration, body mass and immunity. *Heredity*, 111(2), 139–146. Nature Publishing Group. <https://doi.org/10.1038/hdy.2013.29>
- Kingma, S. A., Komdeur, J., Hammers, M., & Richardson, D. S. (2016). The cost of prospecting for dispersal opportunities in a social bird. *Biology Letters*, 12(6), 20160316. <https://doi.org/10.1098/rsbl.2016.0316>
- Kirkwood, T. B. L. (1977). Evolution of ageing. *Nature*, 270(5635), 301–304. <https://doi.org/10.1038/270301a0>
- Komdeur, J. (1991). Cooperative breeding in the Seychelles warbler. *Trends in Ecology & Evolution*, 7(10), 330–331. <https://ethos.bl.uk/>

- OrderDetails.do?uin=uk.bl.ethos.239141 (Accessed: 15 August 2019)
- Komdeur, J. (1992). Importance of habitat saturation and territory quality for evolution of cooperative breeding in the Seychelles warbler. *Nature*, 358(6386), 493–495. Nature Publishing Group. <https://doi.org/10.1038/358493a0>
- Komdeur, J. (1994). Experimental evidence for helping and hindering by previous offspring in the cooperative-breeding Seychelles warbler *Acrocephalus sechellensis*. *Behavioral Ecology and Sociobiology*, 34(3), 175–186. Springer-Verlag. <https://doi.org/10.1007/BF00167742>
- Komdeur, J. (1996a). Influence of age on reproductive performance in the Seychelles warbler. *Behavioral Ecology*, 7(4), 417–425. <https://doi.org/10.1093/beheco/7.4.417>
- Komdeur, J. (1996b). Seasonal timing of reproduction in a tropical bird, the Seychelles warbler: A field experiment using translocation. *Journal of Biological Rhythms*, 11, 333–346. <https://doi.org/10.1177/074873049601100407> Sage Publications, Inc.
- Komdeur, J. (1997). Inter-Island transfers and population dynamics of Seychelles warblers *Acrocephalus sechellensis*. *Bird Conservation International*, 7(1), 7–26. Cambridge University Press. <https://doi.org/10.1017/S0959270900001374>
- Komdeur, J. (2001). Mate guarding in the Seychelles warbler is energetically costly and adjusted to paternity risk. *Proceedings of the Royal Society B: Biological Sciences*, 268(1481), 2103–2111. <https://doi.org/10.1098/rspb.2001.1750>
- Komdeur, J., Piersma, T., Kraaijeveld, K., Kraaijeveld-Smit, F., & Richardson, D. S. (2004). Why Seychelles Warblers fail to recolonize nearby islands: Unwilling or unable to fly there? *Ibis*, 146(2), 298–302. John Wiley & Sons, Ltd (10.1111). <https://doi.org/10.1046/j.1474-919X.2004.00255.x>
- Komdeur, J., & Daan, S. (2005). Breeding in the monsoon: Semi-annual reproduction in the Seychelles warbler (*Acrocephalus sechellensis*). *Journal of Ornithology*, 146(4), 305–313. Springer-Verlag. <https://doi.org/10.1007/s10336-005-0008-6>
- Kraus, C., Pavad, S., & Promislow, D. E. L. (2013). The size-life span trade-off decomposed: Why large dogs die young. *American Naturalist*, 181(4), 492–505. <https://doi.org/10.1086/669665>
- Labocha, M. K., & Hayes, J. P. (2012). Morphometric indices of body condition in birds: A review. *Journal of Ornithology*, 153(1), 1–22. <https://doi.org/10.1007/s10336-011-0706-1>
- Labocha, M. K., Schutz, H., & Hayes, J. P. (2014). Which body condition index is best? *Oikos*, 123(1), 111–119. John Wiley & Sons, Ltd. <https://doi.org/10.1111/j.1600-0706.2013.00755.x>
- Lemaitre, J. F., Gaillard, J. M., Pemberton, J. M., Clutton-Brock, T. H., & Nussey, D. H. (2014). Early life expenditure in sexual competition is associated with increased reproductive senescence in male red deer. *Proceedings of the Royal Society B: Biological Sciences*, 281(1792), 20140792. <https://doi.org/10.1098/rspb.2014.0792>
- Lewin, N., Swanson, E. M., Williams, B. L., & Holekamp, K. E. (2017). Juvenile concentrations of IGF-1 predict life-history trade-offs in a wild mammal. *Functional Ecology*, 31(4), 894–902. Blackwell Publishing Ltd. <https://doi.org/10.1111/1365-2435.12808>
- Lindström, J. (1999). Early development and fitness in birds and mammals. *Trends in Ecology & Evolution*, 14(9), 343–348. [https://doi.org/10.1016/S0169-5347\(99\)01639-0](https://doi.org/10.1016/S0169-5347(99)01639-0)
- Lukasch, B., Westerdahl, H., Strandh, M., Knauer, F., Winkler, H., Moodley, Y., & Hoi, H. (2017). Major histocompatibility complex genes partly explain early survival in house sparrows. *Scientific Reports*, 7(1), 1–11. Nature Publishing Group. <https://doi.org/10.1038/s41598-017-06631-z>
- Marshall, H. H., Vitikainen, E. I., Mwanguhya, F., Businge, R., Kyabulima, S., Hares, M. C., Inzani, E., Kalema-Zikusoka, G., Mwesige, K., Nichols, H. J., Sanderson, J. L., Thompson, F. J., & Cant, M. A. (2017). 'Lifetime fitness consequences of early-life ecological hardship in a wild mammal population. *Ecology and Evolution*, 7(6), 1712–1724. John Wiley & Sons, Ltd. <https://doi.org/10.1002/ece3.2747>
- Merilä, J., & Svensson, E. (1997). Are fat reserves in migratory birds affected by condition in early life? *Journal of Avian Biology*. 28(4), 279–286.
- Metcalfe, N. B., & Monaghan, P. (2001). Compensation for a bad start: Grow now, pay later? *Trends in Ecology & Evolution*, 16(5), 254–260. Elsevier Current Trends. [https://doi.org/10.1016/S0169-5347\(01\)02124-3](https://doi.org/10.1016/S0169-5347(01)02124-3)
- Metcalfe, N. B., & Monaghan, P. (2003). Growth versus lifespan: Perspectives from evolutionary ecology. *Experimental Gerontology*, 38, 935–940. Elsevier Inc. [https://doi.org/10.1016/S0531-5565\(03\)00159-1](https://doi.org/10.1016/S0531-5565(03)00159-1)
- Miller, R. A., Harper, J. M., Galecki, A., & Burke, D. T. (2002). Big mice die young: Early life body weight predicts longevity in genetically heterogeneous mice. *Aging Cell*, 1(1), 22–29. <https://doi.org/10.1046/j.1474-9728.2002.00006.x>
- Monaghan, P. (2008). Early growth conditions, phenotypic development and environmental change. *Philosophical Transactions of the Royal Society, B: Biological Sciences*, 363, 1635–1645. <https://doi.org/10.1098/rstb.2007.0011>
- Monaghan, P., & Ozanne, S. E. (2018). Somatic growth and telomere dynamics in vertebrates: Relationships, mechanisms and consequences. *Philosophical Transactions of the Royal Society, B: Biological Sciences*, 373, 20160446. <https://doi.org/10.1098/rstb.2016.0446>
- Mumme, R. L., Bowman, R., Pruett, M. S., & Fitzpatrick, J. W. (2015). Natal territory size, group size, and body mass affect lifetime fitness in the cooperatively breeding Florida Scrub-jay. *Auk*, 132(3), 634–646. Oxford Academic. <https://doi.org/10.1642/AUK-14-258.1>
- Nol, E., & Smith, J. N. M. (1987). Effects of age and breeding experience on seasonal reproductive success in the song sparrow. *The Journal of Animal Ecology*, 56(1), 301. <https://doi.org/10.2307/4816>
- Nussey, D. H., Kruuk, L. E. B., Morris, A., & Clutton-Brock, T. H. (2007). Environmental conditions in early life influence ageing rates in a wild population of red deer. *Current Biology*, 17, R1000–R1001. Cell Press. <https://doi.org/10.1016/j.cub.2007.10.005>
- Nussey, D. H., Coulson, T., Festa-Bianchet, M., & Gaillard, J. M. (2008). Measuring senescence in wild animal populations: Towards a longitudinal approach. *Functional Ecology*, 22(3), 393–406. <https://doi.org/10.1111/j.1365-2435.2008.01408.x>
- Nussey, D. H., Froy, H., Lemaitre, J. F., Gaillard, J. M., & Austad, S. N. (2013). Senescence in natural populations of animals: Widespread evidence and its implications for bio-gerontology. *Ageing Research Reviews*, 12(1), 214–225. <https://doi.org/10.1016/j.arr.2012.07.004>
- Pettorelli, N., Gaillard, J. M., van Laere, G., Duncan, P., Kjellander, P., Liberg, O., Delorme, D., & Maillard, D. (2002). Variations in adult body mass in roe deer: The effects of population density at birth and of habitat quality. *Proceedings of the Royal Society B: Biological Sciences*, 269(1492), 747–753. <https://doi.org/10.1098/rspb.2001.1791>
- Pigeon, G., Festa-Bianchet, M., & Pelletier, F. (2017). Long-term fitness consequences of early environment in a long-lived ungulate. *Proceedings of the Royal Society B: Biological Sciences*, 284(1853), 20170222. <https://doi.org/10.1098/rspb.2017.0222>
- Powell, M. J. D. (2009). The BOBYQA algorithm for bound constrained optimization without derivatives. Technical Report DAMTP 2009/NA06, Centre for Mathematical Sciences. University of Cambridge. [http://www.damtp.cam.ac.uk/user/na/NA\\_papers/NA2009\\_06.pdf](http://www.damtp.cam.ac.uk/user/na/NA_papers/NA2009_06.pdf)
- Van De Pol, M., Bruinzeel, L. W., Heg, D. I. K., Van Der Jeugd, H. P., & Verhulst, S. (2006). A silver spoon for a golden future: Long-term effects of natal origin on fitness prospects of oystercatchers (*Haematopus ostralegus*). *Journal of Animal Ecology*, 75(2), 616–626. <https://doi.org/10.1111/j.1365-2656.2006.01079.x>
- van de Pol, M., & Verhulst, S. (2006). Age-dependent traits: A new statistical model to separate within- and between-individual effects.

- The American Naturalist*, 167(5), 766–773. The University of Chicago Press. <https://doi.org/10.1086/503331>
- van de Pol, M., & Wright, J. (2009). A simple method for distinguishing within- versus between-subject effects using mixed models. *Animal Behaviour*, 77, 753–758. <https://doi.org/10.1016/j.anbehav.2008.11.006>
- Raj Pant, S., Komdeur, J., Burke, T. A., Dugdale, H. L., & Richardson, D. S. (2019). Socio-ecological conditions and female infidelity in the Seychelles warbler. *Behavioral Ecology*, 30, 1254–1264. <https://doi.org/10.1093/beheco/arz072>
- Raj Pant, S., Hammers, M., Komdeur, J., Burke, T., Dugdale, H. L., & Richardson, D. S. (2020). Age-dependent changes in infidelity in Seychelles warblers. *Molecular Ecology*, 29(19), 3731–3746. <https://doi.org/10.1111/mec.15563>
- Reid, J. M., Bignal, E. M., Bignal, S., McCracken, D. I., & Monaghan, P. (2003). Age-specific reproductive performance in red-billed choughs *Pyrrhocorax pyrrhocorax*: Patterns and processes in a natural population. *Journal of Animal Ecology*, 72(5), 765–776. <https://doi.org/10.1046/j.1365-2656.2003.00750.x>
- Richardson, D. S., Jury, F. L., Blaakmeer, K., Komdeur, J., & Burke, T. (2001). Parentage assignment and extra-group paternity in a cooperative breeder: The Seychelles warbler (*Acrocephalus sechellensis*). *Molecular Ecology*, 10(9), 2263–2273. <https://doi.org/10.1046/j.0962-1083.2001.01355.x>
- Richardson, D. S., Burke, T., & Komdeur, J. (2003). Sex-specific associative learning cues and inclusive fitness benefits in the Seychelles warbler. *Journal of Evolutionary Biology*, 16(5), 854–861. John Wiley & Sons, Ltd (10.1111). <https://doi.org/10.1046/j.1420-9101.2003.00592.x>
- Richardson, D. S., Burke, T., & Komdeur, J. (2007). Grandparent helpers: The adaptive significance of older, postdominant helpers in the Seychelles warbler. *Evolution*, 61(12), 2790–2800. <https://doi.org/10.1111/j.1558-5646.2007.00222.x>
- Richardson, D. S., Komdeur, J., & Burke, T. (2003). Avian behaviour: Altruism and infidelity among warblers. *Nature*, 422(6932), 580. Nature Publishing Group. <https://doi.org/10.1038/422580a>
- Richardson, D. S., Komdeur, J., & Burke, T. (2004). Inbreeding in the Seychelles warbler: Environment-dependent maternal effects. *Evolution*, 58(9), 2037–2048. Society for the Study of Evolution. <https://doi.org/10.1111/j.0014-3820.2004.tb00488.x>
- Ronget, V., Gaillard, J. M., Coulson, T., Garratt, M., Gueyffier, F., Lega, J. C., & Lemaître, J. F. (2018). Causes and consequences of variation in offspring body mass: Meta-analyses in birds and mammals. *Biological Reviews*, 93(1), 1–27. Wiley/Blackwell (10.1111). <https://doi.org/10.1111/brv.12329>
- Rosseel, Y. (2012). 'Lavaan: An R package for structural equation modeling. *Journal of Statistical Software*, 48, 1–36. American Statistical Association. <https://doi.org/10.18637/jss.v048.i02>
- Safford, R., & Hawkins, F. (2013). The Seychelles warbler. In *The birds of Africa: Volume VII: The Malagasy region: Madagascar, Seychelles, Comoros, Mascarenes*. Christopher Helm.
- Sakaluk, S. K., Wilson, A. J., Bowers, E. K., Johnson, L. S., Masters, B. S., Johnson, B. G. P., Vogel, L. A., Forsman, A. M., & Thompson, C. F. (2015). Genetic and environmental variation in condition, cutaneous immunity, and haematocrit in house wrens. *BMC Evolutionary Biology*, 14(1), 1–11. <https://doi.org/10.1186/s12862-014-0242-8>
- Schielezeth, H. (2010). Simple means to improve the interpretability of regression coefficients. *Methods in Ecology and Evolution*, 1(2), 103–113. <https://doi.org/10.1111/j.2041-210x.2010.00012.x>
- Schulte-Hostedde, A. I., Zinner, B., Millar, J. S., & Hickling, G. J. (2005). Restitution of mass – Size residuals: Validating body condition indices. *Ecology*, 86(1), 155–163. <https://doi.org/10.1890/04-0232>
- Seress, G., Sándor, K., Evans, K. L., & Liker, A. (2020). Food availability limits avian reproduction in the city: An experimental study on great tits *Parus major*. *Journal of Animal Ecology*, 89(7), 1570–1580. Edited by E. Derryberry. Blackwell Publishing Ltd. <https://doi.org/10.1111/1365-2656.13211>
- Spagopoulou, F., Teplitsky, C., Chantepie, S., Lind, M. I., Gustafsson, L., & Maklakov, A. A. (2020). Silver-spoon upbringing improves early-life fitness but promotes reproductive ageing in a wild bird. *Ecology Letters*, 23(6), 994–1002. Edited by J. Metcalf. Blackwell publishing Ltd. <https://doi.org/10.1111/ele.13501>
- Sparks, A. M., Spurgin, L. G., van der Velde, M., Fairfield, E. A., Komdeur, J., Burke, T., Richardson, D. S., & Dugdale, H. L. (2020a) 'Telomere heritability and parental age at conception effects in a wild avian population'. *EcoEvoRxiv*. <https://doi.org/10.32942/osf.io/eq2af>
- Sparks, A. M., Spurgin, L. G., van der Velde, M., Fairfield, E. A., Komdeur, J., Burke, T., Richardson, D. S., & Dugdale, H. L. (2020b) 'Telomere heritability and parental age at conception effects in a wild avian population', *Molecular Ecology*, p. mec.15804. <https://doi.org/10.32942/osf.io/eq2af>
- Speakman, J. (2001) Body composition analysis of animals. <https://doi.org/10.1017/cbo9780511551741>
- Spurgin, L. G., Bebbington, K., Fairfield, E. A., Hammers, M., Komdeur, J., Burke, T., Dugdale, H. L., & Richardson, D. S. (2018). Spatio-temporal variation in lifelong telomere dynamics in a long-term ecological study. *Journal of Animal Ecology*, 87(1), 187–198. <https://doi.org/10.1111/1365-2656.12741>
- Stevenson, R. D., & Woods, W. A. (2006). Condition indices for conservation: New uses for evolving tools. *Integrative and Comparative Biology*, 46, 1169–1190. <https://doi.org/10.1093/icb/icl052>
- Stier, A., Reichert, S., Criscuolo, F., & Bize, P. (2015). Red blood cells open promising avenues for longitudinal studies of ageing in laboratory, non-model and wild animals. *Experimental Gerontology*, 71, 118–134. Elsevier Inc. <https://doi.org/10.1016/j.exger.2015.09.001>
- Sudyka, J. (2019). Does reproduction shorten telomeres? Towards integrating individual quality with life-history strategies in telomere Biology. *BioEssays*, 41, 1900095. John Wiley and Sons Inc. <https://doi.org/10.1002/bies.201900095>
- Taborsky, B. (2006). The influence of juvenile and adult environments on life-history trajectories. *Proceedings of the Royal Society B: Biological Sciences*, 273(1587), 741–750. Royal Society. <https://doi.org/10.1098/rspb.2005.3347>
- Tinbergen, J. M., & Boerlijst, M. C. (1990). Nestling weight and survival in individual great tits (*Parus major*). *The Journal of Animal Ecology*, 59(3), 1113. JSTOR. <https://doi.org/10.2307/5035>
- Vaiserman, A., Koliada, A., & Lushchak, O. (2018). Developmental programming of aging trajectory. *Ageing Research Reviews*, 47, 105–122. Elsevier Ireland Ltd. <https://doi.org/10.1016/j.arr.2018.07.007>
- Vera, E., Bernardes de Jesus, B., Foronda, M., Flores, J. M., & Blasco, M. A. (2012). The rate of increase of short telomeres predicts longevity in mammals. *Cell Reports*, 2(4), 732–737. The Authors. <https://doi.org/10.1016/j.celrep.2012.08.023>
- Whittingham, M. J., Stephens, P. A., Bradbury, R. B., & Freckleton, R. P. (2006). Why do we still use stepwise modelling in ecology and behaviour? *Journal of Animal Ecology*, 75(5), 1182–1189. John Wiley & Sons, Ltd (10.1111). <https://doi.org/10.1111/j.1365-2656.2006.01141.x>
- Wilbourn, R. V., Moatt, J. P., Froy, H., Walling, C. A., Nussey, D. H., & Boonekamp, J. J. (2018). The relationship between telomere length and mortality risk in non-model vertebrate systems: A meta-analysis. *Philosophical Transactions of the Royal Society, B: Biological Sciences*, 373(1741), 20160447. <https://doi.org/10.1098/rstb.2016.0447>
- Wilder, S. M., Raubenheimer, D., & Simpson, S. J. (2016). Moving beyond body condition indices as an estimate of fitness in ecological and evolutionary studies. *Functional Ecology*, 30(1), 108–115. <https://doi.org/10.1111/1365-2435.12460>
- Williams, P. D., Day, T., Fletcher, Q., & Rowe, L. (2006). The shaping of senescence in the wild. *Trends in Ecology & Evolution*, 21(8), 458–463. <https://doi.org/10.1016/j.tree.2006.05.008>

Young, A. J. (2018). The role of telomeres in the mechanisms and evolution of life-history trade-offs and ageing. *Philosophical Transactions of the Royal Society, B: Biological Sciences*, 373, 20160452. <https://doi.org/10.1098/rstb.2016.0452>

### SUPPORTING INFORMATION

Additional supporting information can be found online in the Supporting Information section at the end of this article.

**How to cite this article:** Brown, T. J., Dugdale, H. L., Hammers, M., Komdeur, J., & Richardson, D. S. (2022). Seychelles warblers with silver spoons: Juvenile body mass is a lifelong predictor of annual survival, but not annual reproduction or senescence. *Ecology and Evolution*, 12, e9049. <https://doi.org/10.1002/ece3.9049>