

9-28-2018

## Infectious complications after deployment trauma: Following wounded US military personnel into Veterans Affairs care

Jay R McDonald  
*Washington University School of Medicine in St. Louis*

Stephen Y Liang  
*Washington University School of Medicine in St. Louis*

Ping Li  
*Uniformed Services University*

Salwa Maalouf  
*Veterans Affairs St. Louis Health Care System*

Clinton K Murray  
*San Antonio Military Medical Center*

*See next page for additional authors*

Follow this and additional works at: [https://digitalcommons.wustl.edu/oa\\_3](https://digitalcommons.wustl.edu/oa_3)



Part of the [Medicine and Health Sciences Commons](#)

### Please let us know how this document benefits you.

---

#### Recommended Citation

McDonald, Jay R; Liang, Stephen Y; Li, Ping; Maalouf, Salwa; Murray, Clinton K; Weintrob, Amy C; Schnaubelt, Elizabeth R; Kuhn, Janis; Ganesan, Anuradha; Bradley, William; Tribble, David R; and Infectious Disease Clinical Research Program Trauma Infectious Disease Outcomes Study Group, "Infectious complications after deployment trauma: Following wounded US military personnel into Veterans Affairs care." *Clinical infectious diseases*. 67, 8. 1205 - 1212. (2018).  
[https://digitalcommons.wustl.edu/oa\\_3/29](https://digitalcommons.wustl.edu/oa_3/29)

This Open Access Publication is brought to you for free and open access by the Open Access Publications at Digital Commons@Becker. It has been accepted for inclusion in 2010-2019 OA Pubs by an authorized administrator of Digital Commons@Becker. For more information, please contact [vanam@wustl.edu](mailto:vanam@wustl.edu).

---

**Authors**

Jay R McDonald, Stephen Y Liang, Ping Li, Salwa Maalouf, Clinton K Murray, Amy C Weintrob, Elizabeth R Schnaubelt, Janis Kuhn, Anuradha Ganesan, William Bradley, David R Tribble, and Infectious Disease Clinical Research Program Trauma Infectious Disease Outcomes Study Group

# Infectious Complications After Deployment Trauma: Following Wounded US Military Personnel Into Veterans Affairs Care

Jay R. McDonald,<sup>1,2</sup> Stephen Y. Liang,<sup>2</sup> Ping Li,<sup>3,4</sup> Salwa Maalouf,<sup>1</sup> Clinton K. Murray,<sup>5</sup> Amy C. Weintrob,<sup>3,4,6,a</sup> Elizabeth R. Schnaubelt,<sup>7</sup> Janis Kuhn,<sup>1,2</sup> Anuradha Ganesan,<sup>4,5</sup> William Bradley,<sup>3,4</sup> and David R. Tribble<sup>3</sup>; for the Infectious Disease Clinical Research Program Trauma Infectious Disease Outcomes Study Group

<sup>1</sup>Veterans Affairs St. Louis Health Care System, and <sup>2</sup>Washington University School of Medicine, St. Louis, Missouri; <sup>3</sup>Infectious Disease Clinical Research Program, Department of Preventive Medicine and Biostatistics, Uniformed Services University of the Health Sciences, and <sup>4</sup>The Henry M. Jackson Foundation for the Advancement of Military Medicine, Inc., Bethesda, Maryland; <sup>5</sup>San Antonio Military Medical Center, JBSA Fort Sam Houston, Texas; <sup>6</sup>Walter Reed National Military Medical Center, Bethesda, Maryland; and <sup>7</sup>Landstuhl Regional Medical Center, Germany

**Background.** Infectious complications related to deployment trauma significantly contribute to the morbidity and mortality of wounded service members. The Trauma Infectious Disease Outcomes Study (TIDOS) collects data on US military personnel injured in Iraq and Afghanistan in an observational cohort study of infectious complications. Patients enrolled in TIDOS may also consent to follow-up through the Department of Veterans Affairs (VA). We present data from the first 337 TIDOS enrollees to receive VA healthcare.

**Methods.** Data were collected from the Department of Defense (DoD) Trauma Registry, TIDOS infectious disease module, DoD and VA electronic medical records, and telephone interview. Cox proportional hazard analysis was performed to identify predictors of post-discharge infections related to deployment trauma.

**Results.** Among the first 337 TIDOS enrollees who entered VA healthcare, 111 (33%) had 244 trauma-related infections during their initial trauma hospitalization (2.1 infections per 100 person-days). Following initial discharge, 127 (38%) enrollees had 239 trauma-related infections (170 during DoD follow-up and 69 during VA time). Skin and soft-tissue infections and osteomyelitis were predominant during and after the initial trauma hospitalization. In a multivariate model, a shorter time to development of a new infection following discharge was independently associated with injury severity score  $\geq 10$  and occurrence of  $\geq 1$  inpatient infection during initial trauma hospitalization.

**Conclusions.** Incident infections related to deployment trauma continue well after initial hospital discharge and into VA healthcare. Overall, 38% of enrolled patients developed a new trauma-related infection after their initial hospital discharge, with 29% occurring after the patient left military service.

**Keywords.** trauma-related infections; combat-related infections; military health; veterans affairs.

Infectious complications after combat-related traumatic injuries have been well described throughout history [1–6]. Although risk varies based on the mechanism and pattern of injury, infections have impacted approximately a third of US military personnel wounded in the wars in Iraq and Afghanistan [2–6]. To date, much of the focus has been on infections that arise in the days to weeks following traumatic injury. Significantly less is known about the medium-term (6–9 months) and long-term ( $\geq 12$  months) risk of infection among wounded military personnel beyond their initial trauma hospitalization, and even

less is understood about infectious complications of trauma developing after wounded warriors have left active-duty military service.

The Trauma Infectious Disease Outcomes Study (TIDOS), a multicenter Department of Defense (DoD)–Department of Veterans Affairs (VA) observational cohort study, began enrolling military personnel after deployment-related traumatic injury in June 2009 in order to assess short- and long-term infectious complications of those injuries [5]. As part of TIDOS, DoD healthcare data are prospectively collected on participants both during and after their initial trauma hospitalization. Participants who leave the military and enroll in VA healthcare are given the option of consenting to additional collection of VA healthcare data for inclusion in TIDOS databases. The combination of DoD and VA healthcare data provides near-continuous infectious disease surveillance for the large subset of TIDOS participants who transition to VA healthcare.

Previous analyses of TIDOS data prior to the incorporation of VA data into the databases have shown a heavy burden of

Received 20 November 2017; editorial decision 24 March 2018; accepted 5 April 2018; published online April 6, 2018.

<sup>a</sup>Present affiliation/address: Washington DC Veterans Affairs Medical Center, Washington, D.C.

Correspondence: J. R. McDonald, VA St. Louis Health Care System, John Cochran Division, 915 N. Grand Blvd, Mail code 111/JC, St. Louis, MO 63106 (Jay.McDonald1@va.gov).

Clinical Infectious Diseases® 2018;67(8):1205–12

Published by Oxford University Press for the Infectious Diseases Society of America 2018. This work is written by (a) US Government employee(s) and is in the public domain in the US. DOI: 10.1093/cid/ciy280

infection after deployment-related traumatic injury in the DoD. An analysis of the first 3 years of TIDOS data (2009–2012) found an early onset infection rate during initial hospitalization of 31% among military personnel with deployment-related traumatic injury sustained in Iraq or Afghanistan who were admitted to Landstuhl Regional Medical Center (LRMC; Germany) and transferred to a participating DoD hospital in the United States [7]. Variables related to the pattern and severity of injury (eg, traumatic amputations and volume of blood transfused within 24 hours of injury) were found to be independent risk factors for infectious complications after traumatic injury. In this subset of TIDOS enrollees (TIDOS–VA cohort), we report the incidence and natural history of infections that span from the time of initial deployment-related injury through military discharge and into civilian life.

## METHODS

### Study Population

A full description of the TIDOS project design has been previously published [5]. Patients were eligible for inclusion in the TIDOS cohort if they were active duty personnel aged  $\geq 18$  years, sustained a deployment-related traumatic injury, and required medical evacuation to LRMC before transfer to a participating DoD hospital in the National Capital Region (National Naval Medical Center and Walter Reed Army Medical Center; later merged to be Walter Reed National Military Medical Center) or San Antonio, Texas (Brooke Army Medical Center; renamed San Antonio Military Medical Center). The analyses herein are specific to the subset of the TIDOS population who enrolled in VA healthcare and subsequently consented to additional follow-up through review of VA electronic medical records (EMRs; TIDOS–VA cohort). The Infectious Disease Institutional Review Board (IRB) of the Uniformed Services University of the Health Sciences in Bethesda, Maryland, and the IRB of the VA St. Louis Health Care System approved the study.

Eligible patients were first approached and consented for enrollment during their initial trauma hospitalization at a participating US hospital between 1 June 2009 and 31 January 2015. Participants who subsequently left military service and entered the VA healthcare system were again contacted to obtain a second informed consent, allowing data abstraction of relevant VA healthcare records.

### Study Design and Data Collection

After initial consent to participate in TIDOS, data elements obtained from the DoD Trauma Registry [8] provided information about demographics, injury circumstances and patterns, trauma history, injury severity, and elements of early trauma care prior to arrival at LRMC. Data regarding clinical care at LRMC and US DoD hospitals during initial trauma hospitalization were abstracted from medical records using the supplemental TIDOS infectious disease module [5]. To account for potential documentation delays/omissions from multiple

transitions of care, prophylactic antibiotics received on day of injury (DOI) or DOI plus 1 day (DOI+1) were included.

Study participants were contacted at prespecified intervals following their initial hospital discharge (ie, 1 month, 3 months, 6 months, 12 months, 18 months, 2 years, 3 years, 4 years, and 5 years). Methods used to obtain follow-up data included telephonic interviews and review of DoD EMRs. After VA consent was obtained, study personnel at the VA St. Louis Health Care System using the VA's Compensation and Pension Records Interchange abstracted VA healthcare data from the patients' medical records. Trained study personnel collected data using a comprehensive data collection manual, with consultation from infectious diseases specialists as needed. Data definitions between DoD and VA were identical. The VA study data were entered directly into TIDOS study databases through a secure electronic interface.

Infectious disease events during follow-up were only collected if they were considered complications of the initial traumatic injury and included skin and soft-tissue infections (SSTIs), osteomyelitis, bloodstream infections, sepsis, pneumonia, intraabdominal infections, central nervous system infections, urinary tract infections (UTIs), sinusitis, and *Clostridium difficile* infections. UTIs were included if there was a traumatic injury to the pelvic/genital region or a severe head/spinal injury that necessitated urinary catheterization. Intrathoracic infections, including empyema and pneumonia, were included if there was a penetrating thoracic injury or severe head injury that required use of mechanical ventilation. As previously described [5], infections were identified based on clinical findings, laboratory test results, and imaging studies and were classified in accordance with standardized definitions. Infectious disease events were included in the analysis if there was a clinical diagnosis of infection associated with directed antimicrobial treatment (duration  $\geq 5$  days) even if the a priori definitions were not met. Conversely, if an alternate noninfectious diagnosis was documented and antimicrobial therapy was discontinued, candidate events were excluded. An infection that occurred at an identical anatomic site was considered to be a new infection if the previous treatment was completed, along with an absence of signs and symptoms of infection following discontinuation of treatment.

### Statistical Analyses

Characteristics of patients with documented post-discharge infections related to their initial trauma were compared using  $\chi^2$  testing for categorical indicators and nonparametric testing for continuous characteristics. A Cox proportional hazard model was used to identify associations between potential risk factors and the time to first infection following initial hospital discharge. Variables significantly associated with time to first infection or development of any infection in the unadjusted univariate models were evaluated with stepwise selection for inclusion in the adjusted multivariate model. Time to first infection in relation to various factors was analyzed in Kaplan-Meier

plots (assessed with log-rank and Wilcoxon  $\chi^2$ ). Analysis was conducted with SAS version 9.3 (SAS, Cary, North Carolina). Statistical significance was defined as  $P < .05$ .

## RESULTS

### Study Population

A total of 1359 wounded military personnel enrolled in TIDOS between 1 June 2009 and 31 January 2015 (end of enrollment period; Figure 1). As of 31 March 2015, 1152 enrollees (86%) had registered at a VA facility and 500 had enrolled in the TIDOS-VA cohort (enrollment remains ongoing and is currently 638). Data abstraction has been completed for the first 337 patients enrolled in the cohort, which is the study population discussed herein.

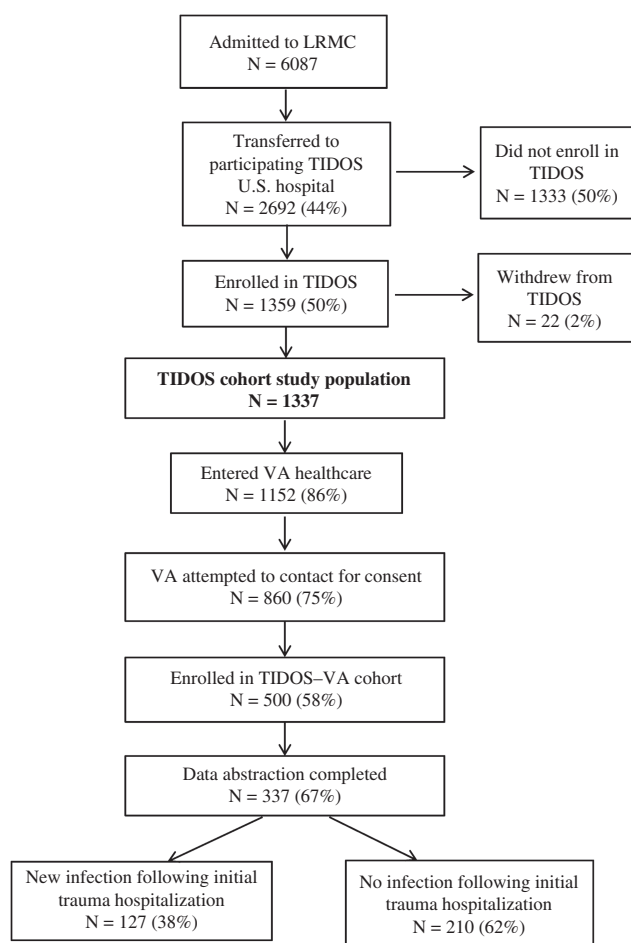
Patients included in the TIDOS-VA cohort were predominantly male (99%) serving in the US Army (64%) in support of operations in Afghanistan (87%). In addition, the majority of patients sustained blast injuries (73%) and were started on

post-trauma antimicrobial prophylaxis (79%). Injury severity on initial presentation was high throughout the cohort, with 55% being assigned an injury severity score (ISS) [9] of  $>15$ , indicating severe or critical injuries. Nonetheless, 53% of patients were not admitted to the intensive care unit (ICU). Time to VA registration occurred a median of 424 days (interquartile range [IQR], 267–720) after initial trauma hospitalization, while data abstraction of enrolled patients was a median of 1449 days (IQR, 1330–1578). The total person-days of follow-up was 688 214, with a median of 2084 days (IQR, 1884–2249).

### Incident Infections

#### Infections Occurring During Initial Trauma Hospitalization

Of the 337 patients, 111 (33%) were diagnosed with at least 1 infection related to traumatic injury during their initial trauma hospitalization either at LRMCM or a participating US DoD hospital. There were 244 unique initial trauma hospitalization infections and a rate of 2.1 infections per 100 person-days (Table 1). A higher rate of infection was found among patients admitted to



**Figure 1.** Flowchart of patients following admission to Landstuhl Regional Medical Center through enrollment in the Veterans Affairs cohort of the Trauma Infectious Disease Outcomes Study, with inclusion of infection outcome information. Abbreviations: LRMCM, Landstuhl Regional Medical Center; TIDOS, Trauma Infectious Disease Outcomes Study; VA, Veterans Affairs.

**Table 1. Characteristics of Infections Related to Traumatic Injury Diagnosed During the Initial Trauma Hospitalization Among Wounded Military Personnel Enrolled in the Trauma Infectious Disease Outcomes Study—Veterans Affairs Cohort**

Infection Characteristic	Patients (N = 337)
Unique infections, no.	244
Infections per 100 person-days, no. (95% CI)	2.1 (1.9–2.4)
Patients admitted initially to LRMCM ICU <sup>a</sup>	2.8 (2.4–3.3)
Patients admitted initially to LRMCM ward <sup>a</sup>	1.1 (0.8–1.5)
Incidence density rate ratio (95% CI): LRMCM ICU vs ward*	2.5 (1.9–3.5)
Patients with $\geq 1$ infection, no. (%)	111
Infections per patient, no. (%) <sup>b</sup>	
1 event	48 (43.2)
2 events	31 (27.9)
3 events	14 (12.6)
$\geq 4$ events	18 (16.2)
Level of care location for infection, no. (%) <sup>b</sup>	
LRMCM only	7 (6.3)
US hospital only	89 (80.2)
Both LRMCM and US hospital	15 (13.5)
Type of Infection, No. (%) <sup>c</sup>	
Skin and soft-tissue infections	104 (42.6)
Osteomyelitis	34 (13.9)
Pneumonia	31 (12.7)
Bloodstream infection	26 (10.7)
Urinary tract infection	12 (4.9)
Sepsis (excluding systemic inflammatory response system)	8 (3.3)

Abbreviations: CI, confidence interval; ICU, intensive care unit; LRMCM, Landstuhl Regional Medical Center.

<sup>a</sup>Total number of patients initially admitted to LRMCM ICU and ward was 147 and 190, respectively.

\* $P < .001$ .

<sup>b</sup>The total number of patients with  $\geq 1$  infection was used to calculate percent.

<sup>c</sup>The total number of unique infections was used to calculate percent. Does not include miscellaneous infections, such as sinusitis and central nervous system infections.

the LRMC ICU vs the non-ICU ward ( $P < .001$ ). Patients most frequently had either 1 or 2 infections (43% and 28%, respectively), and the majority of these were diagnosed following admission to hospitals in the United States (80%). The most common infections were SSTIs (43%), osteomyelitis (14%), pneumonia (13%), and bloodstream infections (11%). Moreover, SSTIs and bloodstream infections were most frequent among patients with  $\geq 3$  infections (43% and 16%, respectively). Regarding the timing of infections, pneumonia had the shortest duration from injury to diagnosis (median, 4 days), followed by sepsis (median, 5 days), bloodstream infections (median, 8 days), SSTIs (median, 17 days), and osteomyelitis (median, 25 days).

### Infections Occurring After Discharge From Initial Trauma Hospitalization

Following initial hospitalization, 127 patients (38%) developed a total of 239 new infections related to their traumatic injury

(Table 2). Patients diagnosed with a new infection post-discharge were more likely to have had an ISS  $\geq 10$  during their initial trauma hospitalization compared to those who did not (83% vs 64%;  $P = .002$ ). In addition, more patients with new post-discharge infections received large-volume ( $\geq 10$  units) transfusions of blood products within 24 hours post-injury (28% vs 15%;  $P = .004$ ) and prophylactic antimicrobial therapy (86% vs 75%;  $P = .020$ ). Patients who developed a new infection post-discharge were also more than twice as likely to have had at least 1 infection during their initial trauma hospitalization compared to those who did not develop a later infection (47% vs 24%;  $P < .001$ ). Approximately 66% of patients with  $\geq 3$  infections during initial hospitalization developed a new infection post-discharge.

Of the 239 unique infections after initial hospital discharge, 170 (71%) were identified through DoD medical records and follow-up and 69 (29%) via VA EMRs (Table 3). Similar to

**Table 2. Characteristics of Wounded Military Personnel by Presence or Absence of Infection Related to Traumatic Injury After Discharge From Initial Trauma Hospitalization**

Characteristic	Total (N = 337)	Infection Following Discharge (N = 127)	No Infection Following Discharge (N = 210)	P Value
Operational theater, no. (%)				.989
Iraq	45 (13.3)	17 (13.3)	28 (13.3)	...
Afghanistan	292 (86.6)	110 (86.6)	182 (86.6)	...
Male, no. (%)	333 (98.8)	125 (98.4)	208 (99.0)	.630
Age at time of injury, median (IQR)	24 (22, 29)	24 (22, 29)	24 (22, 28)	.106
Branch of service, no. (%)				.608
Army	215 (63.7)	85 (66.9)	130 (61.9)	...
Marine	104 (30.8)	35 (27.5)	69 (32.8)	...
Air Force/Navy	18 (5.3)	7 (5.5)	11 (5.2)	...
Blast mechanism of injury, no. (%)	247 (73.2)	97 (76.3)	150 (71.4)	.320
Dismounted at time of injury, no. (%) <sup>a</sup>	106 (31.4)	45 (35.4)	61 (29.0)	.412
Injury severity score, <sup>b</sup> no. (%)				.002
0–9 (minor)	97 (28.7)	21 (16.5)	76 (36.1)	...
10–15 (moderate)	54 (16.0)	23 (18.1)	31 (14.7)	...
16–25 (severe)	74 (21.9)	31 (24.4)	43 (20.4)	...
$\geq 26$ (critical)	112 (33.2)	52 (40.9)	60 (28.5)	...
ICU admission, no. (%) <sup>c</sup>				.540
LRMC only	43 (12.7)	15 (11.8)	28 (13.3)	...
US hospital $\pm$ LRMC	115 (34.1)	48 (37.7)	67 (31.9)	...
Non-ICU	179 (53.1)	64 (50.3)	115 (54.7)	...
Blood transfusion within 24 hours (units)				.004
Zero or missing units <sup>d</sup>	187 (55.5)	56 (44.1)	131 (62.4)	...
1–9	84 (24.9)	36 (28.3)	48 (22.8)	...
10–20	47 (13.9)	23 (18.1)	24 (11.4)	...
$>20$	19 (5.6)	12 (9.4)	7 (3.3)	...
Received prophylactic antimicrobial therapy DOI/DOI + 1	267 (79.2)	109 (85.8)	158 (75.2)	.020
Had an inpatient infection	111 (32.9)	60 (47.2)	51 (24.2)	$<.001$
Total hospitalization, median days (IQR)	23 (13, 43)	30 (19, 55)	18 (11, 35)	$<.001$

Abbreviations: DOI/DOI + 1, day of injury or day of injury plus 1 day; ICU, intensive care unit; IQR, interquartile range; LRMC, Landstuhl Regional Medical Center.

<sup>a</sup>Mounted status data are missing/unknown for 130 patients.

<sup>b</sup>Injury severity score provides an overall score of injury severity based on anatomic regional values [9].

<sup>c</sup>Admission is recorded within the first week of care at each facility.

<sup>d</sup>Eight patients had zero units and 179 had missing data. Missing blood transfusion data are not randomly distributed. Patients with missing blood data are characterized by lower injury severity scores and shock indices. In addition, the majority of patients with missing blood data did not sustain a traumatic amputation and were not admitted to the LRMC ICU.

**Table 3. Distribution of Infections Related to Traumatic Injury Following Initial Trauma Hospitalization Among Wounded Military Personnel Enrolled in the Trauma Infectious Disease Outcomes Study—Veterans Affairs Cohort**

Type of Infection	Number of Infections <sup>a</sup>	Data Source, No. (%)			
		Department of Defense		Veterans Affairs	
		N	Time to Diagnosis, Median (IQR) <sup>b</sup>	N	Time to Diagnosis, Median (IQR) <sup>b</sup>
Skin and soft-tissue infections	161	117 (73)	170 (48–411)	44 (27)	829 (187–1292)
Osteomyelitis	31	23 (74)	97 (26–315)	8 (26)	81 (41–910)
Urinary tract infections	16	4 (25)	119 (43–666)	12 (75)	95 (17–748)
Sinusitis and mastoiditis	11	11 (100)	266 (162–423)	0	NA
Pneumonia/tracheobronchitis	6	6 (100)	422 (291–507)	0	NA
Intraabdominal infection	6	6 (100)	211 (9–493)	0	NA
Bloodstream infection	5	3 (60)	180 (36–409)	2 (40)	401 (0–802)
<i>Clostridium difficile</i>	2	0	NA	2 (100)	1260 (1253–1267)
Otitis media	1	0	NA	1 (100)	1578 (NA)
Total	239	170 (71)	...	69 (29)	...

Abbreviations: IQR, interquartile range; NA, not applicable.

<sup>a</sup>Patients may have more than 1 infection, so sum is greater than patient total.

<sup>b</sup>Days from initial hospital discharge to infection diagnosis.

infections that occurred during the initial trauma hospitalization, the most common infections after initial discharge were SSTIs (68%) and osteomyelitis (13%), as well as UTIs (7%). The time from initial hospital discharge to diagnosis of incident infections was a median of 88 days (IQR, 19–351) for any infection, 104 days (IQR, 33–462) for SSTIs, 54 days (IQR, 20–99) for osteomyelitis, and 69 days (IQR, 15–860) for UTIs (Figure 2). Using time following hospital discharge to diagnosis of first infection, the incidence density rate for SSTIs was 0.018 per 100 person-days (95% confidence interval [CI], 0.015–0.023), while it was 0.004 (95% CI, 0.002–0.005) for osteomyelitis and 0.002 (95% CI, 0.0008–0.003) for UTIs.

### Risk Factor Analysis

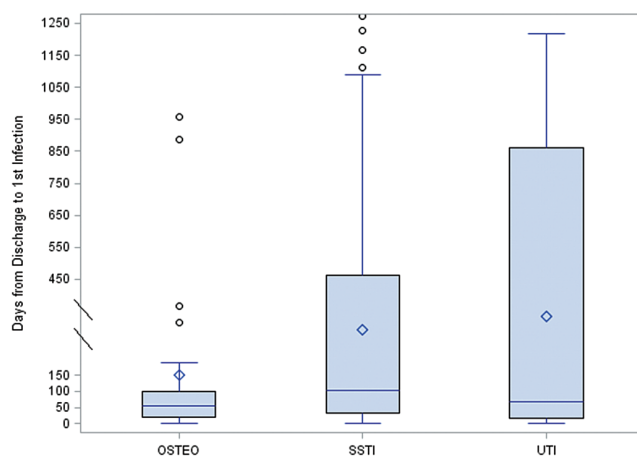
Risk factors were examined in a Cox proportional hazard model using time to first infection following discharge from the initial US hospitalization as the primary event (Table 4). Volume of blood products transfused within 24 hours post-injury, ISS, length of initial trauma hospitalization, number of infections during initial hospitalization, number of operating room visits within 2 weeks of injury, receipt of prophylactic antibiotics, and sustaining a traumatic or surgical amputation were significantly associated with a shorter time to infection in the univariate model. Upon multivariate analysis, an ISS of  $\geq 10$  (greatest with ISS 10–15; hazard ratio [HR], 2.72; 95% CI, 1.45–5.11) and having at least 1 infection during initial hospitalization (greatest with  $\geq 3$  infections; HR, 2.66; 95% CI, 1.50–4.73) remained statistically significant independent risk factors for a shorter time to first infection following the initial trauma hospitalization (Table 4).

The associations of time to new infection with ISS, volume of blood transfusion in the first 24 hours post-injury, length of

initial trauma hospitalization, and number of infections during initial trauma hospitalization were also examined in Kaplan-Meier plots (Figure 3). The likelihood of developing an infection was greatest within the first year following hospital discharge. Associations between time to new infection and all 4 examined variables were statistically significant in Kaplan-Meier analyses.

### DISCUSSION

While many trauma-related infections present during the initial phase of care after a combat-related injury, the burden of infectious complications persists long after hospital discharge for many wounded military personnel. The TIDOS project is the first study



**Figure 2.** Time to new infection related to traumatic injury following initial trauma hospital discharge for the most common infections (skin and soft-tissue infections, osteomyelitis, urinary tract infections). Abbreviations: OSTEO, osteomyelitis; SSTI, skin and soft-tissue infection; UTI, urinary tract infection.

**Table 4. Cox Proportional Hazard Analysis of Factors Associated With the Time to First Infection Related to Traumatic Injury Following Initial Trauma Hospitalization**

Risk Factor	Unadjusted Hazard Ratio (95% CI)	Adjusted Hazard Ratio (95% CI)	P Value
<b>Operational theater</b>			
Afghanistan	Reference	...	...
Iraq	1.08 (0.65–1.81)	...	...
Combat-related injury	1.13 (0.46–2.76)	0.56 (0.20–1.56)	.265
<b>Mechanism of injury</b>			
Non-blast	Reference	...	...
Blast	1.12 (0.75–1.69)	...	...
<b>Injury severity score</b>			
0–9 (minor)	Reference	Reference	...
10–15 (moderate)	2.66 (1.45–4.88)	2.72 (1.45–5.11)	.002
16–25 (severe)	2.67 (1.53–4.67)	2.65 (1.45–4.84)	.002
≥26 (critical)	2.66 (1.57–4.51)	2.40 (1.24–4.62)	.009
<b>Blood transfusion within 24 hours (units)</b>			
Zero <sup>a</sup>	Reference	...	...
1–9	1.59 (1.04–2.41)	...	...
10–20	1.85 (1.14–3.02)	...	...
>20	2.15 (1.15–4.01)	...	...
<b>Total initial hospitalization (days)</b>			
≤14	Reference	...	...
15–30	1.86 (1.12–3.09)	...	...
31–60	2.32 (1.37–3.95)	...	...
>60	3.13 (1.80–5.43)	...	...
Received prophylactic antimicrobial therapy DOI/DOI + 1	1.88 (1.11–3.17)	1.71 (0.95–3.11)	.076
<b>ICU admission, no. (%)</b>			
Non-ICU	Reference	Reference	...
LRMC only	0.97 (0.55–1.70)	0.58 (0.31–1.10)	.094
US hospital ± LRMC	1.19 (0.82–1.73)	0.65 (0.40–1.05)	.079
<b>Infections diagnosed during initial hospitalization</b>			
None	Reference	Reference	...
1–2	1.91 (1.29–2.84)	1.81 (1.16–2.82)	.009
≥3	2.73 (1.67–4.46)	2.66 (1.50–4.73)	<.001
<b>Operating room visits with 2 weeks of injury</b>			
None or 1	Reference	...	...
2–3	1.70 (1.02–2.84)	...	...
≥4	2.16 (1.34–3.48)	...	...
<b>Mechanical ventilation during initial hospitalization</b>			
None	Reference	...	...
LRMC only	1.28 (0.82–2.00)	...	...
LRMC and US hospital –first week	1.22 (0.69–2.15)	...	...
LRMC and US hospital ≥second week	1.29 (0.67–2.50)	...	...
Traumatic amputation <sup>b</sup>	1.58 (1.07–2.33)	...	...
Surgical amputation/revision of amputation <sup>c</sup>	1.82 (1.16–2.83)	...	...

Abbreviations: CI, confidence interval; DOI/DOI + 1, day of injury or day of injury plus 1 day; ICU, intensive care unit; LRMC, Landstuhl Regional Medical Center.

<sup>a</sup>If patients were missing blood transfusion data, they were included in “zero” category.

<sup>b</sup>Amputation recorded prior to or at LRMC.

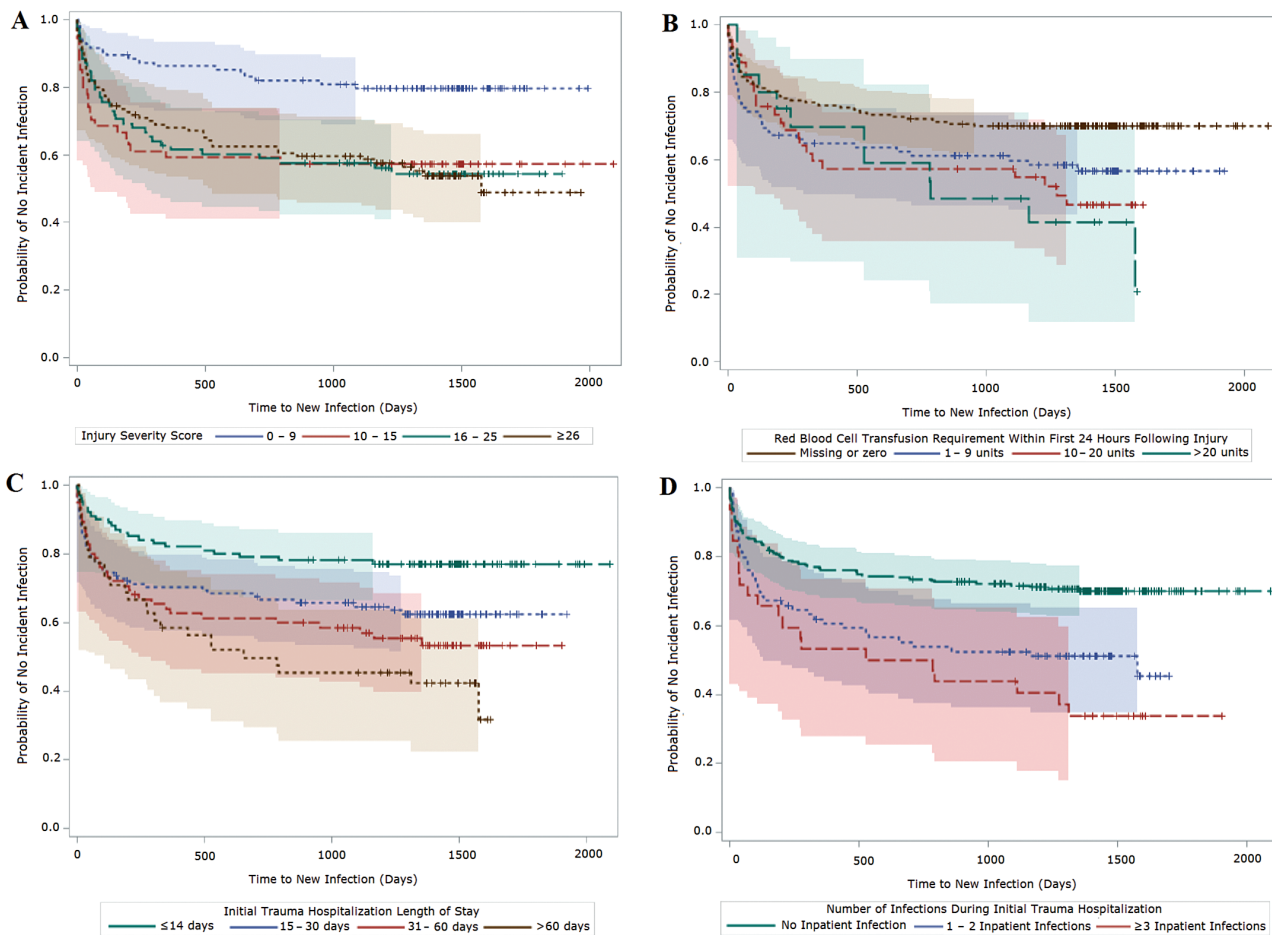
<sup>c</sup>Amputation recorded at US hospital.

to assess trauma-related infections among deployed military personnel with respect to rates, syndromes, outcomes, and risk factors from the time of initial care through military service and into civilian life. The merging of DoD and VA data for this study provides a unique opportunity to understand the burden and natural history of infection in this population. Our data show that approximately 38% of enrolled patients developed a new trauma-related

infection after their initial hospital discharge and that 29% of such infections occurred after leaving military service.

The results of our risk factor analysis corroborate prior investigations that identified an independent association between ISS and infection risk [3, 10]. The high injury severity is likely a reflection of the high rate of blast injuries that occurred in Afghanistan, where 87% of our study population sustained





**Figure 3.** Kaplan-Meier survival plots (with 95% Hall-Wellner bands) of time to new infection following initial trauma hospital discharge. *A*, Plot stratified by injury severity score. Log-rank  $\chi^2$ , 16.8 ( $P < .001$ ); Wilcoxon  $\chi^2$ , 16.2 ( $P = .001$ ). *B*, Plot stratified by volume of blood transfusion within 24 hours of injury. Log-rank  $\chi^2$ , 11.2 ( $P = .011$ ); Wilcoxon  $\chi^2$ , 7.4 ( $P = .060$ ). *C*, Plot stratified by length of inpatient hospitalization. Log-rank  $\chi^2$ , 18.7 ( $P < .001$ ); Wilcoxon  $\chi^2$ , 15.7 ( $P = .001$ ). *D*, Plot stratified by number of inpatient infections. Log-rank  $\chi^2$ , 21.8 ( $P < .001$ ); Wilcoxon  $\chi^2$ , 18.2 ( $P < .001$ ).

injuries. These injuries were frequently characterized by traumatic amputations and often required large-volume blood transfusions within 24 hours of injury [11]. It is noteworthy that risk factors independently associated with a shorter time to development of a new infection following initial hospital discharge are not variables that can be easily modified by clinicians but could increase awareness and close follow-up during this period.

SSTIs and osteomyelitis were the most common types of infection identified within the TIDOS-VA cohort both during initial trauma hospitalization and in subsequent DoD and VA healthcare, consistent with what is expected from blast injuries with contaminated wounds. Both infection syndromes are well-described sequelae of open lower extremity fractures sustained by military personnel after blast injury in Afghanistan and Iraq [12–17]. While most of these infections occurred within the first 30 days of injury in our cohort, we identified a second peak in SSTIs and, to a lesser extent, osteomyelitis 6 to 12 months later. This is not surprising given the often chronic

and recurrent nature of these types of infections, and it is likely that the VA healthcare system will shoulder the majority of care of these patients as they leave active-duty service. Interestingly, UTIs were more frequently diagnosed in VA healthcare compared to the DoD in our cohort and may represent an under-recognized and potentially chronic complication of perineal trauma, which is frequently seen after blast-related injury in dismounted military personnel.

This study provides the first longitudinal survey of infectious complications in combat-injured US military personnel spanning DoD and VA healthcare. The use of DoD and VA healthcare system EMRs allows for the comprehensive capture of clinical data from most, if not all, health encounters within each respective system. It is possible that TIDOS-VA participants may have also received healthcare at civilian clinical sites outside of the DoD and VA system. While telephonic interviews are a component of TIDOS data collection, such outside events could have been missed due to recall inaccuracies or lack of disclosure by the participant. By virtue of our reliance on EMRs for clinical data,

another limitation of this study is that all determinations of infectious disease events were made based on the strength of clinical documentation. Therefore, it is plausible that minor or ambiguous infections could have been excluded from our database. As all TIDOS-VA participants had to have sustained trauma severe enough to require medical evacuation to Germany before being transferred back to the United States, our cohort does not include patients with minor trauma treated exclusively within the combat zone. If we had included these patients, it is possible that we might have identified even more trauma-related infections, particularly SSTIs, given potential for wound contamination with improvised explosive devices and other blast mechanisms.

It is possible that key risk factors for infection related to modifiable elements of early care were not included in this analysis. Future analyses focusing on specific infectious syndromes, such as SSTI and osteomyelitis, may elucidate such early care elements, which may be adjusted in order to improve outcomes. In addition, of particular interest to us is the impact of mental health and social support on infection recurrence. We have collected longitudinal data for this cohort on depression, post-traumatic syndrome disorder, substance use, and social support during VA healthcare time. Future analyses focusing on the risk of infection during VA care will incorporate these data elements and help determine whether these potentially modifiable risk factors impact late infection risk.

The unique nature of our data, obtainable only through DoD-VA collaboration, highlights the vital importance of interagency research collaboration. While many research groups have successfully combined DoD and VA healthcare data for research, it is notable that many daunting barriers to carrying out such research persist, most prominently related to sharing data and research funding. Efforts by both agencies to streamline processes of collaboration should continue.

In conclusion, our analysis of the TIDOS-VA cohort demonstrates that many wounded US military personnel from the wars in Iraq and Afghanistan remain at significant risk for trauma-related infection for many years, long past the point of hospital discharge and even after leaving military service. Although our study was restricted to severely wounded service members, our findings may be applicable to generalized military and civilian populations in circumstances that involve serious traumatic injuries, particularly those involving a blast mechanism. In the coming years, more US veterans of the wars in Iraq and Afghanistan will transition to VA healthcare. As TIDOS-VA enrollment and data collection are presently ongoing, the size and statistical power of the cohort will continue to grow. Future analyses of this cohort will include examination of specific infectious syndromes, risk of late/recurrent infection, and impact of mental health and social support on infection.

## Notes

**Acknowledgments.** We are indebted to the Infectious Disease Clinical Research Program, The Trauma Infectious Disease Outcomes Study team of

clinical coordinators, microbiology technicians, data managers, clinical site managers, and administrative support personnel for their tireless hours to ensure the success of this project.

**Disclaimer.** The views expressed are those of the authors and do not reflect the official views or policies of the Uniformed Services University of the Health Sciences, the Henry M. Jackson Foundation for the Advancement of Military Medicine, Inc., the National Institutes of Health or the Department of Health and Human Services, Brooke Army Medical Center, Walter Reed National Military Medical Center, Landstuhl Regional Medical Center, US Army Medical Department, the US Army Office of the Surgeon General, the Department of Defense, and the Departments of the Army, Navy, and Air Force. Mention of trade names, commercial products, or organizations does not imply endorsement by the US Government.

**Financial support.** This work (IDCRP-024) was supported by the Infectious Disease Clinical Research Program, a DoD program executed through the Uniformed Services University of the Health Sciences, Department of Preventive Medicine and Biostatistics. This project was funded by the National Institute of Allergy and Infectious Diseases, National Institute of Health (interagency Agreement Y1-AI-5072), and the Department of the Navy under the Wounded, Ill, and Injured Program (HU001-10-1-0014).

**Potential conflicts of interest.** All authors: No reported conflicts of interest. All authors have submitted the ICMJE Form for Disclosure of Potential Conflicts of Interest. Conflicts that the editors consider relevant to the content of the manuscript have been disclosed.

## References

1. Murray CK, Hinkle MK, Yun HC. History of infections associated with combat-related injuries. *J Trauma* **2008**; 64:S221-31.
2. Murray CK. Epidemiology of infections associated with combat-related injuries in Iraq and Afghanistan. *J Trauma* **2008**; 64:S232-8.
3. Petersen K, Riddle MS, Danko JR, et al. Trauma-related infections in battlefield casualties from Iraq. *Ann Surg* **2007**; 245:803-11.
4. Murray CK, Wilkins K, Molter NC, et al. Infections in combat casualties during Operations Iraqi and Enduring Freedom. *J Trauma* **2009**; 66:S138-44.
5. Tribble DR, Conger NG, Fraser S, et al. Infection-associated clinical outcomes in hospitalized medical evacuees after traumatic injury: Trauma Infectious Disease Outcome Study. *J Trauma* **2011**; 71:S33-42.
6. Murray CK, Wilkins K, Molter NC, et al. Infections complicating the care of combat casualties during Operations Iraqi Freedom and Enduring Freedom. *J Trauma* **2011**; 71:S62-73.
7. Weintrob AC, Murray CK, Xu J, et al. Infections complicating the care of casualties from Iraq and Afghanistan. *Surg Infect* **2018**; 19:286-97.
8. Eastridge BJ, Jenkins D, Flaherty S, Schiller H, Holcomb JB. Trauma system development in a theater of war: experiences from Operation Iraqi Freedom and Operation Enduring Freedom. *J Trauma* **2006**; 61:1366-72; discussion 1372-3.
9. Linn S. The injury severity score—importance and uses. *Ann Epidemiol* **1995**; 5:440-6.
10. Dickens CP, Kilcoyne CK, Kluk CM, et al. Risk factors for infection and amputation following open, combat-related calcaneal fractures. *J Bone Joint Surg Am* **2013**; 95: e241-8.
11. Ficke JR, Eastridge BJ, Butler F, et al. Dismounted complex blast injury report of the Army Dismounted Complex Blast Injury Task Force. *J Trauma Acute Care Surg* **2012**; 73:S520-34.
12. Johnson EN, Burns TC, Hayda RA, Hospenthal DR, Murray CK. Infectious complications of open type III tibial fractures among combat casualties. *Clin Infect Dis* **2007**; 45:409-15.
13. Yun HC, Branstetter JG, Murray CK. Osteomyelitis in military personnel wounded in Iraq and Afghanistan. *J Trauma* **2008**; 64:S163-8; discussion S168.
14. Mody RM, Zapor M, Hartzell JD, et al. Infectious complications of damage control orthopedics in war trauma. *J Trauma* **2009**; 67:758-61.
15. Burns TC, Stinner DJ, Mack AW, et al; Skeletal Trauma Research Consortium. Microbiology and injury characteristics in severe open tibia fractures from combat. *J Trauma Acute Care Surg* **2012**; 72:1062-7.
16. Huh J, Stinner DJ, Burns TC, Hsu JR; Late Amputation Study Team. Infectious complications and soft tissue injury contribute to late amputation after severe lower extremity trauma. *J Trauma* **2011**; 71:S47-51.
17. Napierala MA, Rivera JC, Burns TC, Murray CK, Wenke JC, Hsu JR; Skeletal Trauma Research Education Consortium. Infection reduces return-to-duty rates for soldiers with type III open tibia fractures. *J Trauma Acute Care Surg* **2014**; 77:S194-7.