

AperTO - Archivio Istituzionale Open Access dell'Università di Torino

Drugs and mucus: an innovative biosimilar mucus model to study the diffusion of drugs

This is the author's manuscript

Original Citation:

Availability:

This version is available <http://hdl.handle.net/2318/1763060> since 2020-11-24T11:53:57Z

Terms of use:

Open Access

Anyone can freely access the full text of works made available as "Open Access". Works made available under a Creative Commons license can be used according to the terms and conditions of said license. Use of all other works requires consent of the right holder (author or publisher) if not exempted from copyright protection by the applicable law.

(Article begins on next page)

Cosmin Butnarusu^a, Daniela Pacheco^b, Paola Petrini^b, Livia Visai^c, Sonja Visentin^a

^a Dipartimento di Biotecnologie Molecolari e Scienze per la Salute, Università degli Studi di Torino, 10125 Italia

^b Dipartimento di Chimica, Materiali e Ingegneria Chimica, Politecnico di Milano, 20133 Italia

^c Dipartimento di Medicina Molecolare, Università degli studi di Pavia, 27100 Italia

The need

Up until now there are no standard protocols that model the passage of molecules through mucus.



Pharmaceutical companies need an *in vitro* screening mucus model in order to reduce the number of non effective drugs reaching preclinical trials.

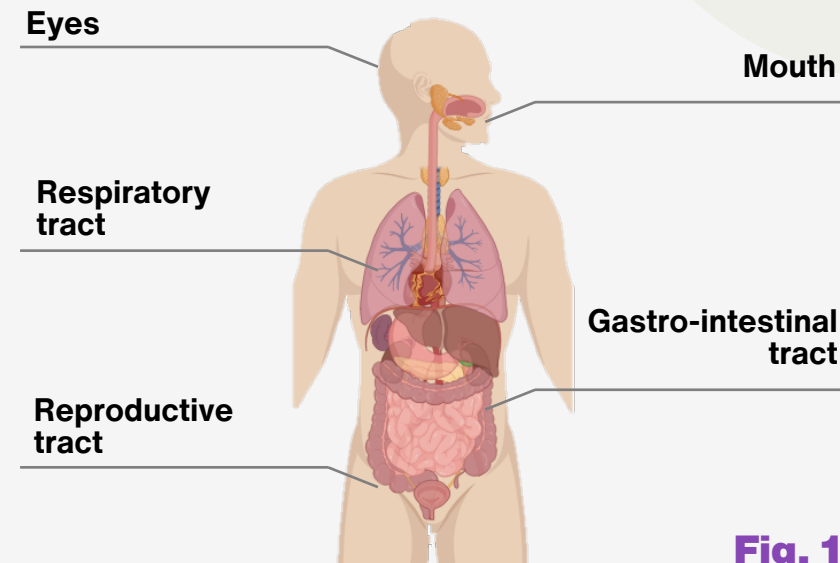


Fig. 1

Mucus distribution

Mucus covers all the wet tissues of the human body. Mucus is helping us staying healthy. It is a natural barrier (Fig 1).

Mucus barriers

Mucus is a selective barrier against pathogens however, it is an obstacle even for drugs orally administered. Drugs may rest trapped into the mucus network (Fig 2).

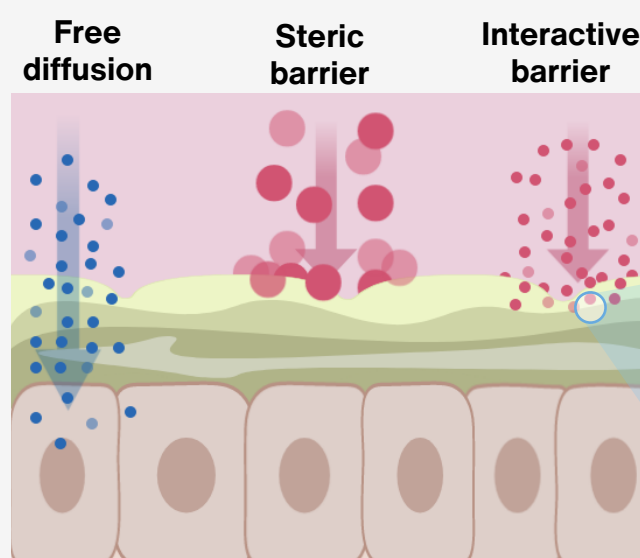


Fig. 2

Physico-chemical characteristics

The mucus model Mu³Gel, produced by Bac³Gel (www.bac3gel.com) reproduces the physico-chemical properties of cystic fibrosis mucus.

Rheological parameters such as the elastic (G') and the viscous (G'') modulus of the biosimilar mucus are as similar as possible to the pathological mucus (Fig. 3).

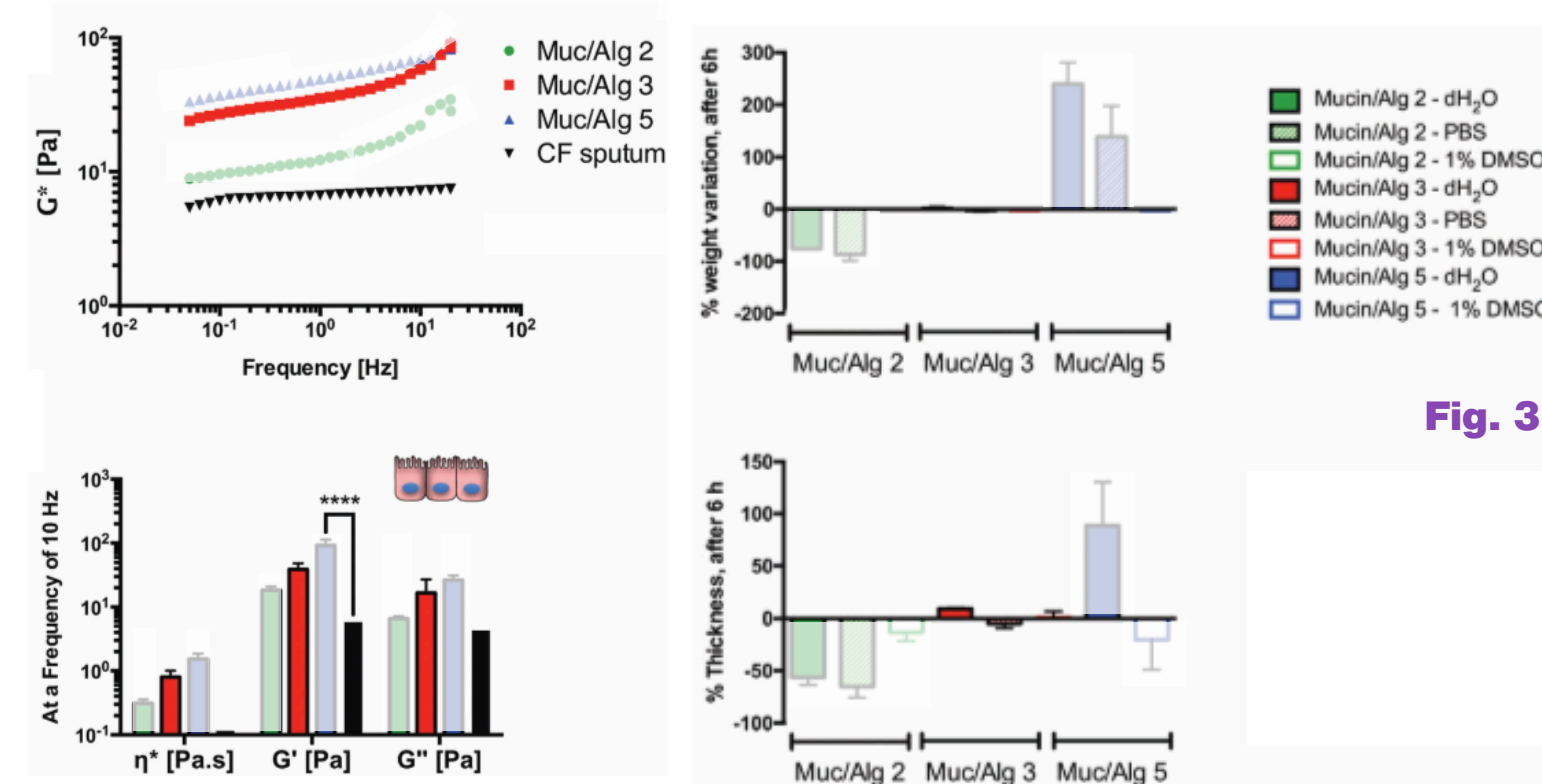


Fig. 3

Diffusion of drugs

The mucus model can be coupled to classic diffusion platforms (e.g. PAMPA) for high throughput analysis.

The diffusion across the mucus model of different drugs was studied by means of PAMPA and compared with the diffusion rates in absence of mucus (Fig. 4).

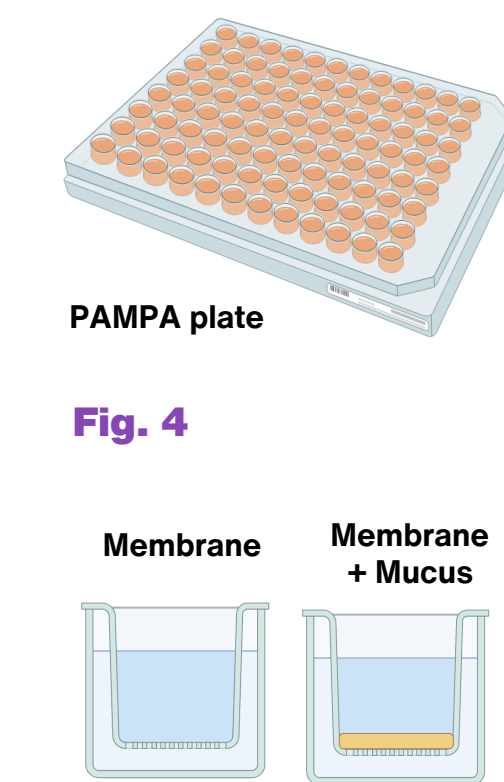
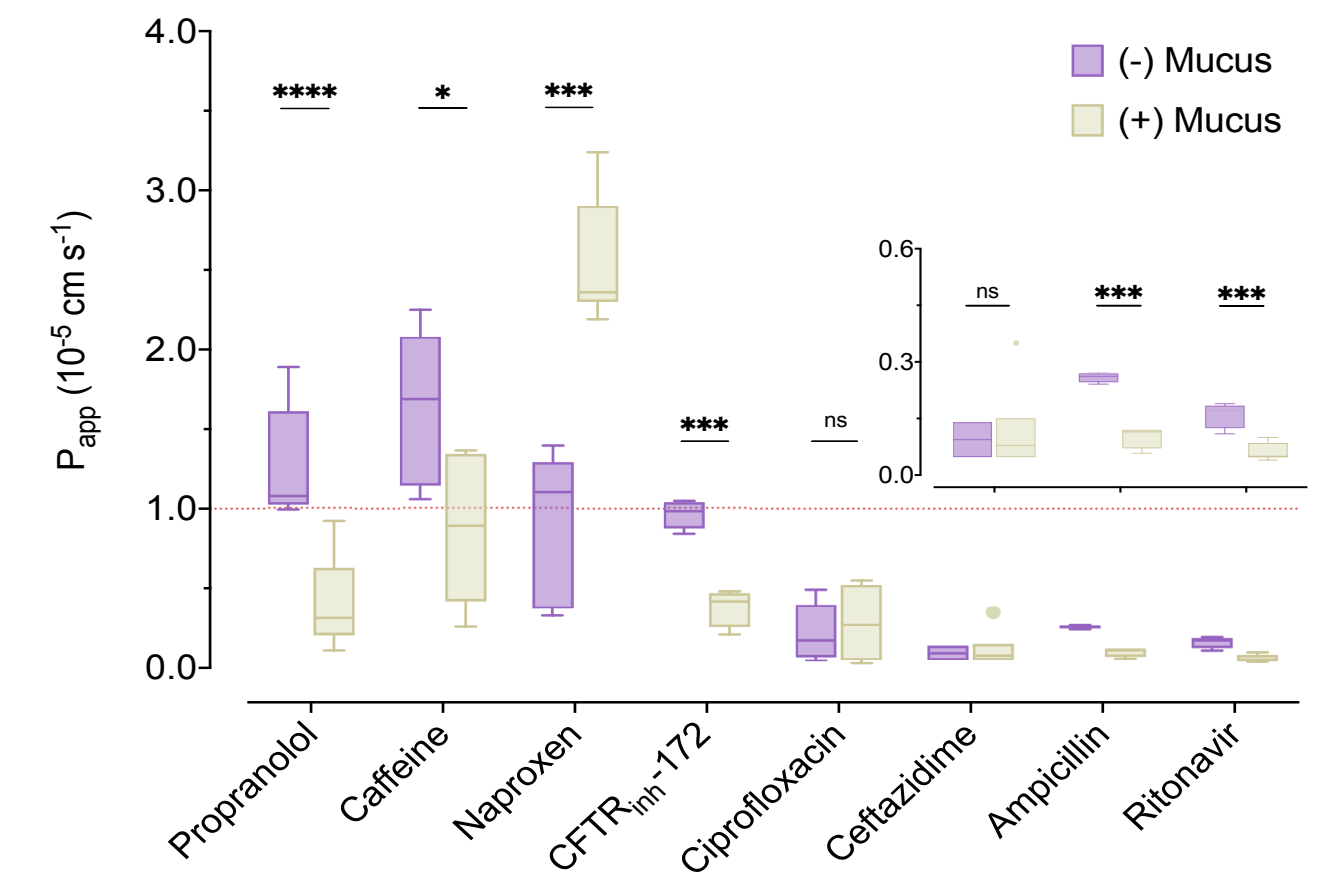


Fig. 4



Take home messages

- Mu³Gel is fully tuneable. The production method allow to incorporate other mucus components
- Mu³Gel reproduces the interactive and steric barrier of human mucus
- Mu³Gel is cytocompatible
- Mu³Gel can host different and competitive microorganisms
- Mu³Gel is easy to use and easy to produce

