

AperTO - Archivio Istituzionale Open Access dell'Università di Torino

**Unravelling the existence of Alpine Nunataks: the hidden paleosols of the Stolenberg Plateau (NW Italy)**

**This is the author's manuscript**

*Original Citation:*

*Availability:*

This version is available <http://hdl.handle.net/2318/1888514> since 2023-01-30T11:35:06Z

*Terms of use:*

Open Access

Anyone can freely access the full text of works made available as "Open Access". Works made available under a Creative Commons license can be used according to the terms and conditions of said license. Use of all other works requires consent of the right holder (author or publisher) if not exempted from copyright protection by the applicable law.

(Article begins on next page)





# Unravelling the existence of Alpine Nunataks: the hidden paleosols of the Stolenberg Plateau (NW Italy)



Pintaldi E.<sup>1</sup>, D'Amico M.<sup>1,2</sup>, Santoro V.<sup>1</sup>, Colombo N.<sup>1,3,4</sup>, Celi L.<sup>1</sup>, Freppaz M.<sup>1,3</sup>

<sup>1</sup>Università degli Studi di Torino - DISAFA, Largo Paolo Braccini 2, 10095, Grugliasco (TO), Italy

<sup>2</sup>Università degli Studi di Milano - DISAA, Via Celoria 2, 20133 Milano (MI), Italy

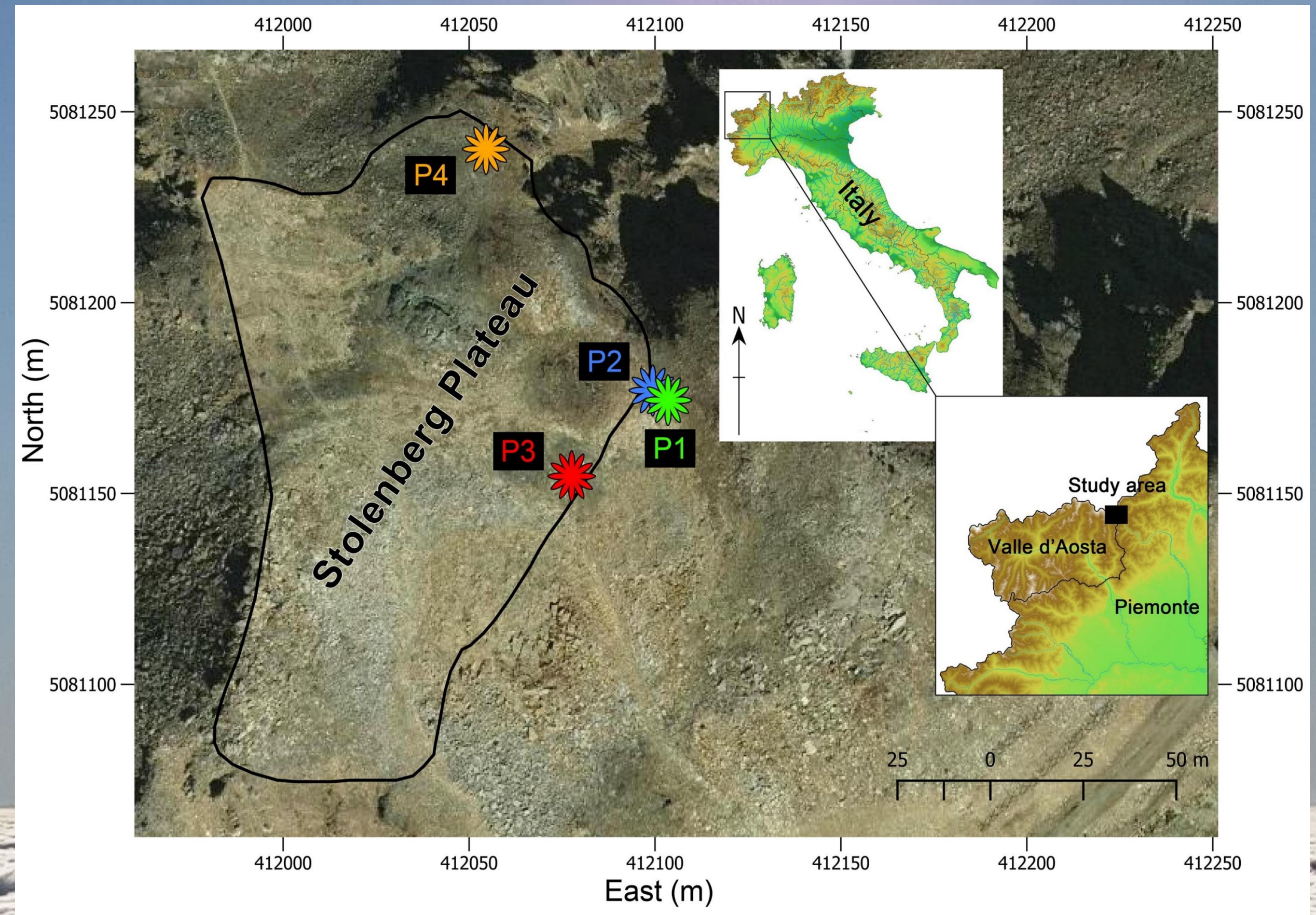
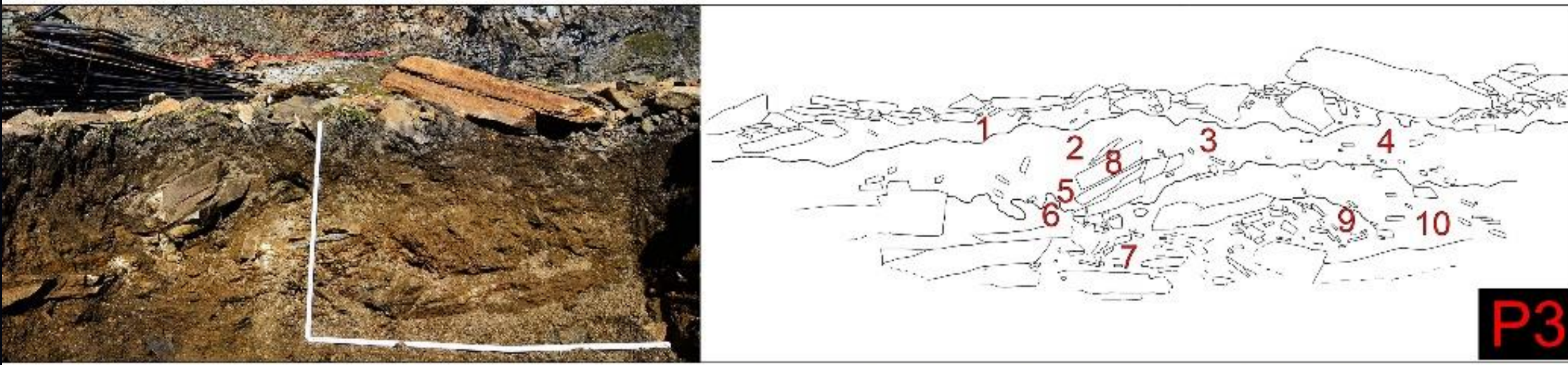
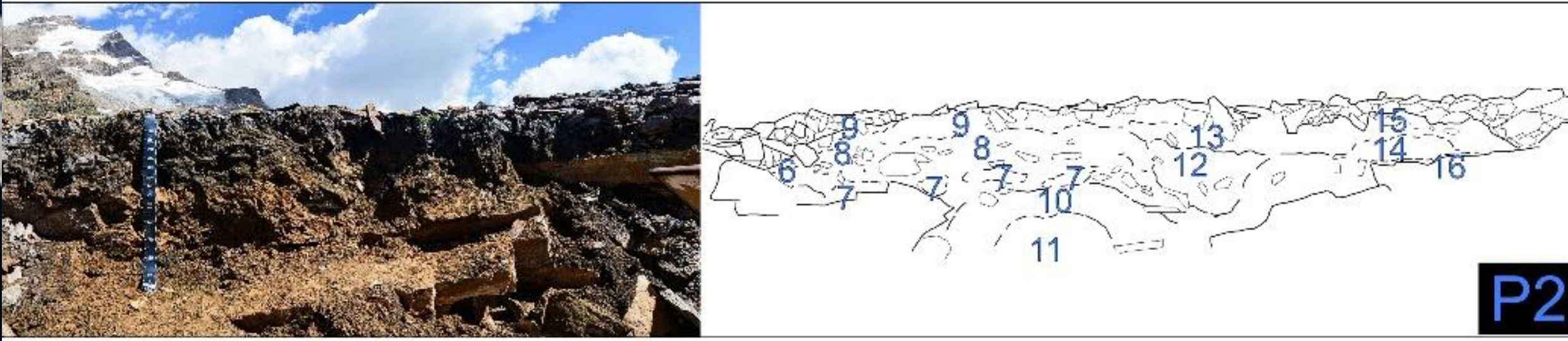
<sup>3</sup>Università degli Studi di Torino, NATRISK, Research Centre on Natural Risks in Mountain and Hilly Environments, Largo Paolo Braccini 2, 10095, Grugliasco (TO), Italy

<sup>4</sup>National Research Council, Water Research Institute, Strada Provinciale 35d, 00010 Montelibretti (RM), Italy

## Introduction

In high-mountain areas, Pleistocene glaciations and erosion-related processes erased most of the pre-existing soils. However, on scattered stable surfaces, ancient soils can be locally preserved for long periods, either through coverage by non-erosive, cold-based, ice or as nunataks.

This study was performed in the periglacial environment of the Stolenberg Plateau (LTER site Istituto Mosso) located at ca. 3030 m a.s.l., on the southern slope of the Monte Rosa Massif (Western Italian Alps). The plateau is covered by thick periglacial blockfields and blockstreams, with a scarce plant cover (3-5% of the surface). These periglacial landforms unexpectedly revealed well-developed Umbrisols characterized by thick and dark (between 30 and 65 cm) A horizons. The organic carbon stocks were comparable to forest soils at lower elevation (above 5 kg\*m<sup>-2</sup>). Geophysical investigations showed that these soils were widespread under the stony cover, with a thickness ranging between 20 and 90 cm.



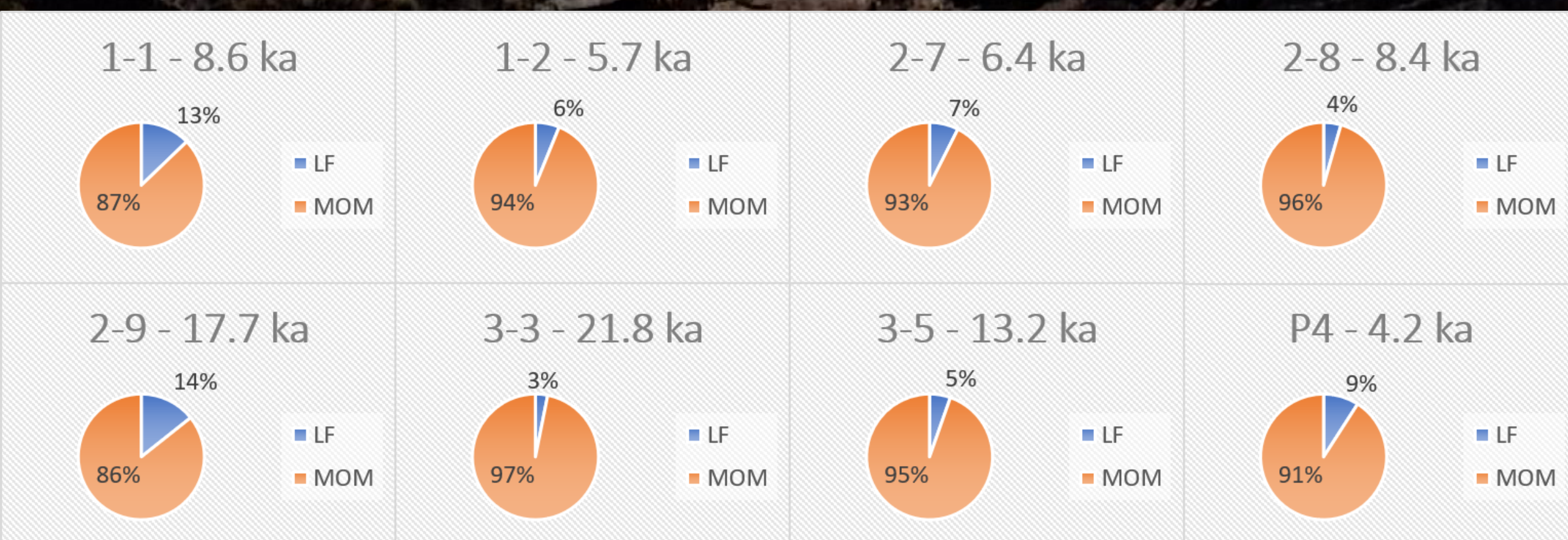
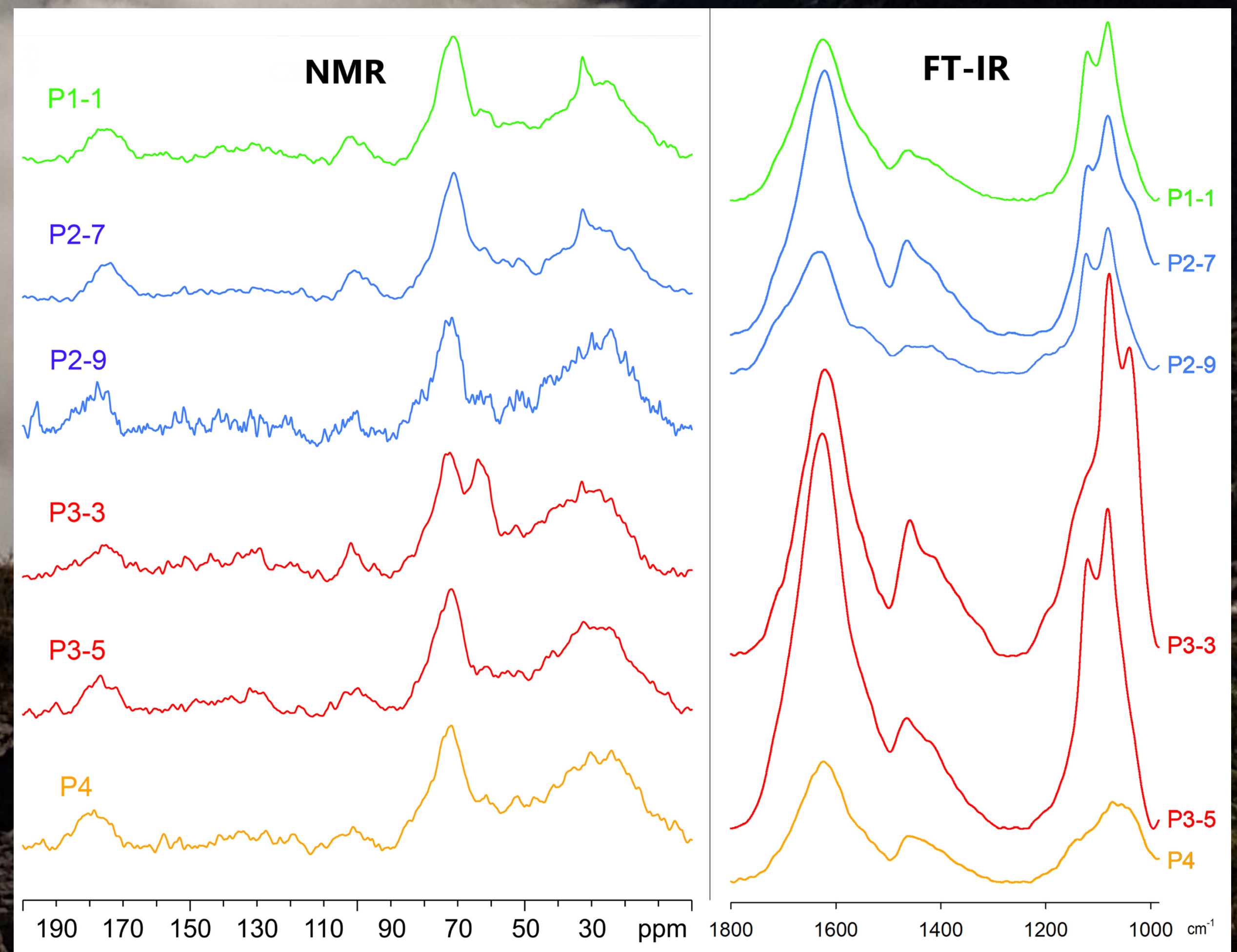
## Methods

- Soil <sup>14</sup>C datings (AMS)
- Soil  $\delta^{13}C$  (IRMS)
- OM physical and chemical fractionation
- Solid state <sup>13</sup>C NMR
- FT-IR spectroscopies

## Results

- Radiocarbon dating (<sup>14</sup>C) spanned from 4.4 to over 22 ka BP
- Soil  $\delta^{13}C$  correspondence with soils and alpine vegetation in high-elevation ecosystems
- The greatest part of organic carbon was stored in the stable mineral OM pool (MOM)
- The OM consisting mainly of paraffinic substances (lipids and waxes), cellulose and hemicellulose derived from autochthonous, well-adapted, ancient alpine vegetation

Sample ID	Cal. Radiocarbon Age (cal. yr BP) (2s range)	$\delta^{13}C$ (‰)	Phase
P1-1	8787-8434	-24.7	Holocene Climatic Optimum
P1-2	5744-5583	-23.9	Holocene Climatic Optimum
P2-7	6500-6306	-24.2	Holocene Climatic Optimum
P2-8	8534-8302	-23.9	Holocene Climatic Optimum
P2-9	17536-17014	-24.5	Early Lateglacial Ice Decay
P2-9bis	18228-17870	-24.5	Early Lateglacial Ice Decay
P3-2	18916-18611	-23.8	Early Lateglacial Ice Decay
P3-3	22168-21431	-23.5	Last Glacial Maximum/ Early Lateglacial Ice Decay
P3-5	13337-13110	-23.6	Bølling-Allerød
P4	4405-4090	-22.7	Late Holocene



## Conclusion

Our results indicate that these hidden soils recorded the main warming climatic phases occurred from the end of the Last Glacial Maximum until the Late Holocene ~4,000 yr BP. Thus the environmental conditions on the Plateau were suitable for alpine plant life and pedogenesis, already since 22-21 ka BP. The Plateau represents one of the first documented Alpine Nunataks, which acted as a biological refugia since the end of the LGM, representing therefore, a valuable natural and historical archive for unravelling the post-LGM history of the high-elevation landscape of the European Alps.