

OPEN  
ARTICLE

# The United States COVID-19 Forecast Hub dataset

Estee Y. Cramer<sup>1,200</sup>, Yuxin Huang<sup>1,200</sup>, Yijin Wang<sup>1,200</sup>, Evan L. Ray<sup>1</sup>, Matthew Cornell<sup>1</sup>, Johannes Bracher<sup>2,3</sup>, Andrea Brennen<sup>4</sup>, Alvaro J. Castro Rivadeneira<sup>1</sup>, Aaron Gerding<sup>1</sup>, Katie House<sup>1</sup>, Dasuni Jayawardena<sup>1</sup>, Abdul Hannan Kanji<sup>1</sup>, Ayush Khandelwal<sup>1</sup>, Khoa Le<sup>1</sup>, Vidhi Mody<sup>1</sup>, Vrushti Mody<sup>1</sup>, Jarad Niemi<sup>5</sup>, Ariane Stark<sup>1</sup>, Apurv Shah<sup>1</sup>, Nutcha Wattanchit<sup>1</sup>, Martha W. Zorn<sup>1</sup>, Nicholas G. Reich<sup>1</sup>✉ & US COVID-19 Forecast Hub Consortium\*

Academic researchers, government agencies, industry groups, and individuals have produced forecasts at an unprecedented scale during the COVID-19 pandemic. To leverage these forecasts, the United States Centers for Disease Control and Prevention (CDC) partnered with an academic research lab at the University of Massachusetts Amherst to create the US COVID-19 Forecast Hub. Launched in April 2020, the Forecast Hub is a dataset with point and probabilistic forecasts of incident cases, incident hospitalizations, incident deaths, and cumulative deaths due to COVID-19 at county, state, and national, levels in the United States. Included forecasts represent a variety of modeling approaches, data sources, and assumptions regarding the spread of COVID-19. The goal of this dataset is to establish a standardized and comparable set of short-term forecasts from modeling teams. These data can be used to develop ensemble models, communicate forecasts to the public, create visualizations, compare models, and inform policies regarding COVID-19 mitigation. These open-source data are available via download from GitHub, through an online API, and through R packages.

## Introduction

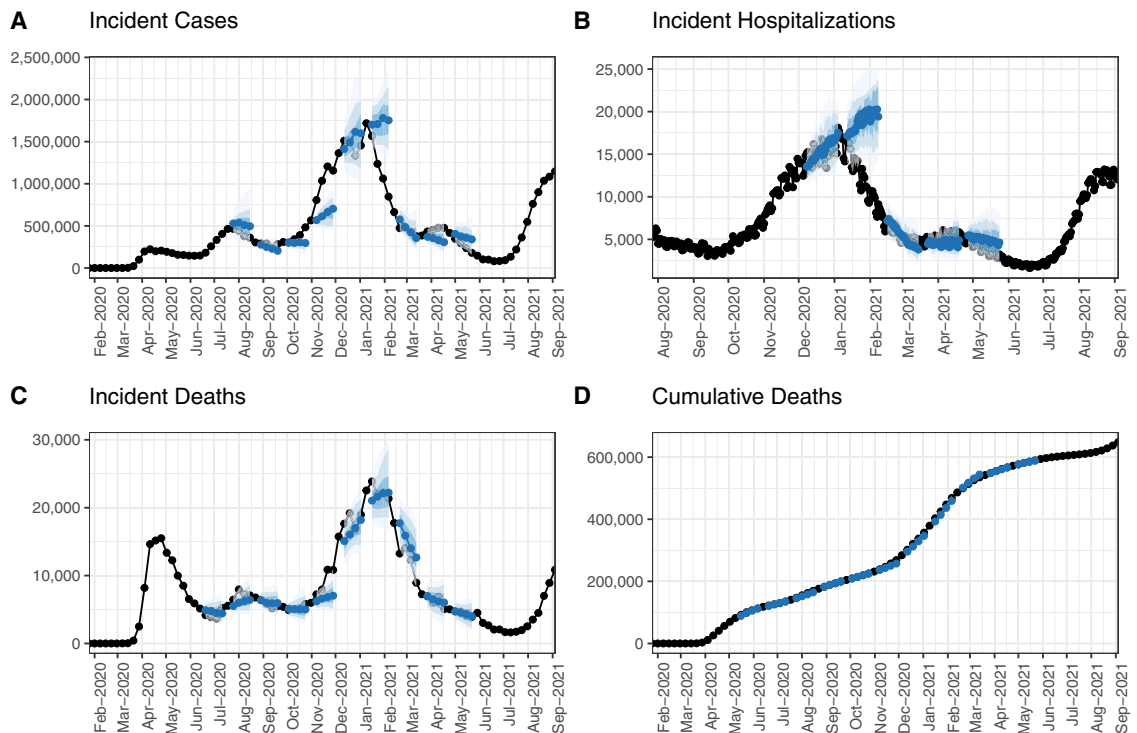
To understand how the COVID-19 pandemic would progress in the United States, dozens of academic research groups, government agencies, industry groups, and individuals produced probabilistic forecasts for COVID-19 outcomes starting in March 2020<sup>1</sup>. We collected forecasts from over 90 modeling teams in a data repository, thus making forecasts easily accessible for COVID-19 response efforts and forecast evaluation. The data repository is called the US COVID-19 Forecast Hub (hereafter, Forecast Hub) and was created through a partnership between the United States Centers for Disease Control and Prevention (CDC) and an academic research lab at the University of Massachusetts Amherst.

The Forecast Hub was launched in early April 2020 and contains real-time forecasts of reported COVID-19 cases, hospitalizations, and deaths. As of May 3<sup>rd</sup>, 2022, the Forecast Hub had collected over 92 million individual point or quantile predictions contained within over 6,600 submitted forecast files from 110 unique models. The forecasts submitted each week reflected a variety of forecasting approaches, data sources, and underlying assumptions. There were no restrictions in place regarding the underlying information or code used to generate real-time forecasts. Each week, the latest forecasts were combined into an ensemble forecast (Fig. 1), and all recent forecast data were updated on an official COVID-19 Forecasting page hosted by the US CDC (<https://www.cdc.gov/coronavirus/2019-ncov/science/forecasting/mathematical-modeling.html>). The ensemble models were also used in the weekly reports that are posted on the Forecast Hub website, <https://covid19forecasthub.org/doc/reports/>.

Forecasts are quantitative predictions about data that will be observed at a future time. Forecasts differ from scenario-based projections, which examine feasible outcomes conditional on a variety of future assumptions. Because forecasts are unconditional estimates of data that will be observed in the future, they can be evaluated against eventual observed data. An important feature of the Forecast Hub is that submitted forecasts are

<sup>1</sup>Department of Biostatistics and Epidemiology, University of Massachusetts Amherst, Amherst, MA, 01003, USA.

<sup>2</sup>Chair of Econometrics and Statistics, Karlsruhe Institute of Technology, Karlsruhe, 76185, Germany. <sup>3</sup>Computational Statistics Group, Heidelberg Institute for Theoretical Studies, Heidelberg, 69118, Germany. <sup>4</sup>IQT Labs, Waltham, MA, 02451, USA. <sup>5</sup>Department of Statistics, Iowa State University, Ames, IA, 50011, USA. <sup>200</sup>These authors contributed equally: Estee Y. Cramer, Yuxin Huang, Yijin Wang. \*A list of authors and their affiliations appears at the end of the paper. ✉e-mail: [nick@umass.edu](mailto:nick@umass.edu)



**Fig. 1** Time series of weekly incident deaths at the national level and forecasts from the COVID-19 Forecast Hub ensemble model for selected weeks in 2020 and 2021. Ensemble forecasts (blue) with 50%, 80% and 95% prediction intervals shown in shaded regions and the ground-truth data (black) for incident cases (A), incident hospitalizations (B), incident deaths (C) and cumulative deaths (D). The truth data come from JHU CSSE (panels A, C, D) and HealthData.gov (panel B).

time-stamped so the exact time at which a forecast was made public can be verified. In this way, the Forecast Hub serves as a public, independent registration system for these forecast model outputs. Data from the Forecast Hub have served as the basis for research articles for forecast evaluation<sup>2</sup> and forecast combination<sup>3–5</sup>. These studies can be used to determine how well models have performed at various points during the pandemic, which can, in turn, guide best practices for utilizing forecasts in practice and inform future forecasting efforts<sup>2</sup>.

Teams submitted predictions in a structured format to facilitate data validation, storage, and analysis. Teams also submitted a metadata file and license for their model's data. Forecast data, ground truth data from the Johns Hopkins University Center for Systems Science and Engineering (JHU CSSE)<sup>6</sup>, New York Times (NYTimes)<sup>7</sup>, USA Facts<sup>8</sup>, and HealthData.gov<sup>9</sup> and model metadata were stored in the public Forecast Hub GitHub repository<sup>10</sup>.

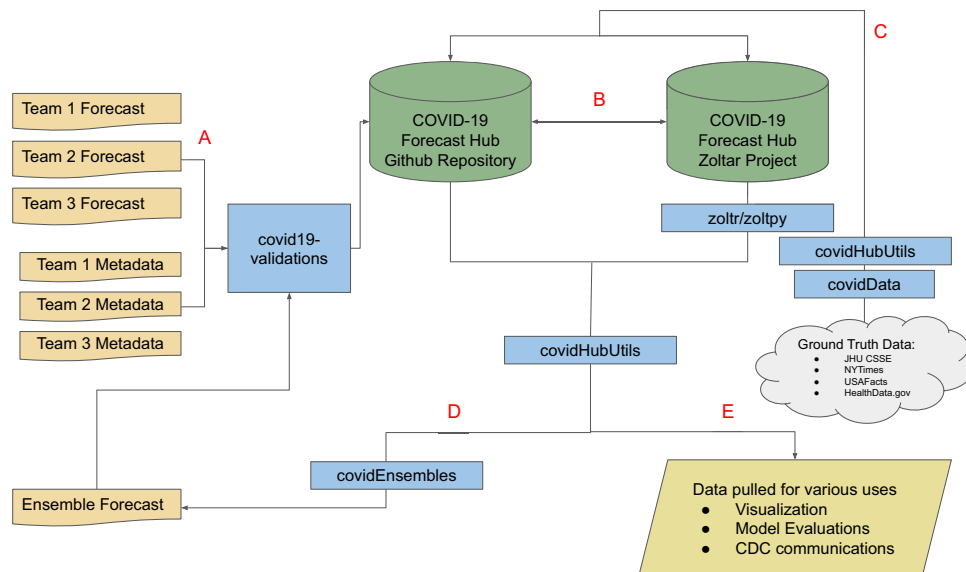
The forecasts were automatically synchronized with an online database called Zoltar via calls to a representational State Transfer (REST) application programming interface (API)<sup>11</sup> every six hours (Fig. 2). Raw forecast data may be downloaded directly from GitHub or Zoltar via the *covidHubUtils* R package<sup>12</sup>, the *zoltr* R package<sup>13</sup> or *zoltpy* Python library<sup>14</sup>.

This dataset of real-time forecasts created during the COVID-19 pandemic can provide insights into the shortcomings and successes of predictions and improve forecasting efforts in years to come. Although these data are restricted to forecasts for COVID-19 in the United States, the structure of this dataset has been used to create datasets of COVID-19 forecasts in the EU and the UK, and longer-term scenario projections in the US<sup>15–18</sup>. The general structure of this data collection could be applied to additional diseases or forecasting outcomes in the future<sup>11</sup>.

This large collaborative effort has provided data on short-term forecasts for over two years of forecasting efforts. Nearly all data were collected in real time and therefore are not subject to retrospective biases. The data are also openly available to the public, thus fostering a transparent, open science approach to support public health efforts.

## Results

**Data acquisition.** Beginning in April 2020, the Reich Lab at the University of Massachusetts, Amherst, in partnership with the US CDC, began collecting probabilistic forecasts of key COVID-19 outcomes in the United States (Table 1). The effort began by collecting forecasts of deaths and hospitalizations at the weekly and daily scales for the 50 US states and 5 territories (Washington DC, Puerto Rico, US Virgin Islands, Guam, and the Northern Mariana Islands) as well as the aggregated US national level. In July 2020, daily resolution-level forecasts for COVID-19 deaths were discontinued, and the effort expanded to include forecasts of weekly incident



**Fig. 2** Schematic of the data storage and related infrastructure surrounding the COVID-19 Forecast Hub. (A) Forecasts are submitted to the COVID-19 Forecast Hub GitHub repository and undergo data format validation before being accepted into the system. (B) A continuous integration service ensures that the GitHub repository and PostgreSQL database stay in sync with mirrored versions of the data. (C) Truth data for visualization, evaluation, and ensemble building are retrieved once per week using both the *covidHubUtils* and the *covidData* R packages. Truth data are stored in both repositories. (D) Once per week, an ensemble forecast submission is made using the *covidEnsembles* R package. It is submitted to the GitHub repository and undergoes the same validation as other submissions. (E) Using the *covidHubUtils* R package, forecast and truth data may be extracted from either the GitHub or PostgreSQL database in a standard format for tasks such as scoring or plotting.

cases at the county, state, and national levels. Forecasts may include a point prediction and/or quantiles of a predictive distribution.

Any team was eligible to submit data to the Forecast Hub provided they used the correct formatting. Upon initial submission of forecast data, teams were required to upload a metadata file that briefly described the methods used to create the forecasts and specified a license under which their forecast data were released. Individual model outputs are available under different licenses as specified in the GitHub data repository. No model code was stored in the Forecast Hub.

During the first month of operation, members of the Forecast Hub team downloaded forecasts made available by teams publicly online, transformed these forecasts into the correct format (see *Forecast format* section), and pushed them into the Forecast Hub repository. Starting in May 2020, all teams were required to format and submit their own forecasts.

**Repository structure.** The dataset containing forecasts is stored in two locations, and all data can be accessed through either source. The first is the COVID-19 Forecast Hub GitHub repository, <https://github.com/reichlab/covid19-forecast-hub>, and the second is an online database, Zoltar, which can be accessed via a REST API<sup>11</sup>. Details about data access and format are documented in the subsequent sections.

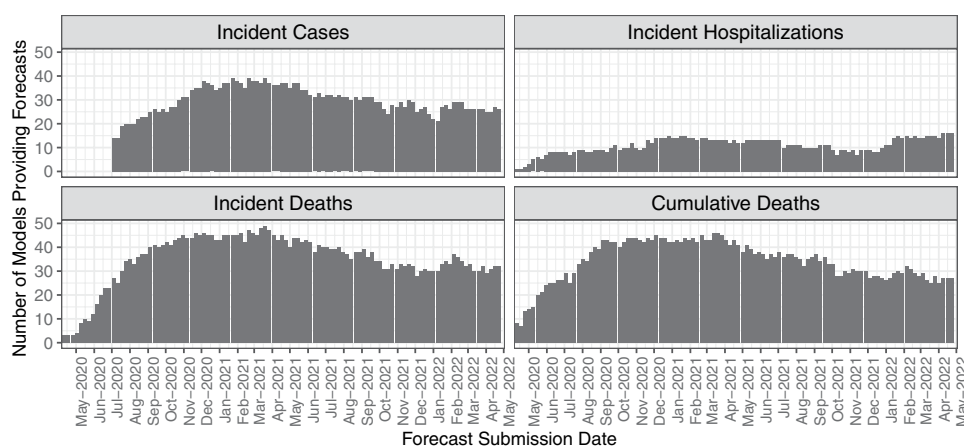
When accessing data through the Zoltar forecast repository REST API, subsets of submitted forecasts can be queried directly from a PostgreSQL database. This eliminates the need to access individual CSV files and facilitates access to versions of forecasts in cases when they were updated.

**Forecast outcomes.** The Forecast Hub dataset stores forecasts for four different outcomes: incident cases, incident hospitalizations, incident deaths, and cumulative deaths (Table 1). Incident case forecasts were first introduced as a forecast outcome several months after the Forecast Hub started and have several key differences from other predicted outcomes. They are the only outcomes for which the Forecast Hub accepts county-level forecasts, as well as state and national level forecasts. Since there are over 3,000 counties in the US, this required some compromises on the scale of data collected for these forecasts in other ways. Specifically, case forecasts may only be submitted for up to 8 weeks into the future instead of up to 20 weeks for deaths and are required to have fewer quantiles (seven quantiles) compared to other outcomes, which can have up to twenty-three quantiles. This gives a coarser representation of the forecast (see the section on Forecast format below).

**Forecast target dates.** Weekly targets follow the standard of epidemiological weeks (EW) used by the CDC, which defines a week as starting on Sunday and ending on the following Saturday<sup>19</sup>. Forecasts of cumulative deaths target the number of cumulative deaths reported by Saturday ending a given week. Forecasts of weekly incident cases or deaths target the difference between reported cumulative cases or deaths on consecutive

Outcome	Scale	Locations			Horizons Stored	Number of quantiles for probabilistic forecasts	Earliest Forecast Date	First date of standardized truth data	Date of first ensemble forecast
		County	State	National					
Incident Cases	Weekly	X	X	X	1 - 8 weeks	7	2020-07-05	2020-03-15	2020-07-18
Incident Hospitalizations	Daily		X	X	1 - 130 days	23	2020-03-27	2020-11-16	2020-12-05
Incident Deaths	Daily		X	X	1 - 130 days	23	2020-03-15	2020-03-15	NA
Incident Deaths	Weekly		X	X	1-20 weeks	23	2020-03-15	2020-03-15	2020-06-20
Cumulative Deaths	Daily		X	X	1 - 130 days	23	2020-03-15	2020-03-15	NA
Cumulative Deaths	Weekly		X	X	1-20 weeks	23	2020-03-15	2020-03-15	2020-04-13

**Table 1.** Forecast characteristics for all four outcomes. The table shows the temporal scale, spatial scale of locations, horizons stored, number of quantiles, and dates of the earliest forecast, earliest standardized truth data, and earliest ensemble build.



**Fig. 3** Number of primary forecasts submitted for each outcome per week from April 27<sup>th</sup>, 2020 through May 3<sup>rd</sup>, 2022. In the initial weeks of submission, fewer than 10 models provided forecasts. Over time, the number of teams submitting forecasts for each forecasted outcome increased into early 2021 and then saw a small decline through the end of 2021, with some renewed interest in 2022.

Saturdays. As an example of a forecast and the corresponding observation, forecasts submitted between Tuesday, October 6, 2020 (day 3 of EW41) and Monday, October 12, 2020 (day 2 of EW42) contained a “1 week ahead” forecast of incident deaths that corresponded to the change in cumulative reported deaths observed in EW42 (i.e., the difference between the cumulative reported deaths on Saturday, October 17, 2020, and Saturday, October 10, 2020), a “2 week ahead” forecast that corresponded to the change in cumulative reported deaths in week EW43. In this paper, we refer to the “forecast week” of a submitted forecast as the week corresponding to a “0-week ahead” horizon. In the example above, the forecast week would be EW41. Daily incident hospitalization horizons are for the number of reported hospitalizations a specified number of days after the forecast was generated.

**Summary of forecast data collected.** In the initial weeks of submission, fewer than 10 models provided forecasts. As the pandemic spread, the number of teams submitting forecasts increased; as of May 3<sup>rd</sup>, 2022, 93 primary, 9 secondary models, and 17 models with the designation “other” had been submitted to the Forecast Hub. As of May 3<sup>rd</sup>, 2022, across all weeks, a median of 30 primary models (range: 14 to 39) contributed incident case forecasts (Fig. 3a), a median of 11 primary models (range: 1 to 16) contributed incident hospitalizations (Fig. 3b), a median of 37 primary models (range 1 to 49) contributed incident death forecasts (Fig. 3c), and a median of 35 primary models (range 3 to 46) contributed cumulative death forecasts each week (Fig. 3d). As of May 3<sup>rd</sup>, 2022, the dataset contained 6,633 forecast files with 92,426,015 point or quantile predictions for unique combinations of targets and locations.

**Ensemble and baseline forecasts.** Alongside the models submitted by individual teams, there are also baseline and ensemble models generated by the Forecast Hub and CDC.

The COVIDhub-baseline model was created by the Forecast Hub in May 2020 as a benchmarking model. Its point forecast is the most recent observed value as of the forecast creation date with a probability distribution around that based on weekly differences in previous observations<sup>2</sup>. The baseline model initially produced forecasts for case and death outcomes. Hospitalization baseline forecasts were added in September 2021.

The COVIDhub-ensemble model creates a combination of submitted forecasts to the Forecast Hub. The ensemble produces forecasts of incident cases at a horizon of 1 week ahead, forecasts of incident hospitalizations at horizons up to 14 days ahead, and forecasts of incident and cumulative deaths at horizons up to 4 weeks ahead.

Initially the ensemble produced forecasts of incident cases at horizons of 1 to 4 weeks and incident hospitalizations at 1 to 28 days. However, in September 2021, due to the unreliability of incident case and hospitalization forecasts at horizons greater than 1 week (for cases) and 14 days (for hospitalizations), horizons past those respective thresholds were excluded from the COVIDhub-ensemble model, although they were still included in the COVIDhub-4\_week\_ensemble<sup>20</sup>. Other work details the methods used for determining the appropriate combination approach<sup>3,4</sup>. Starting in February 2021, GitHub tags were created to document the exact version of the repository used each week to create the COVIDhub-ensemble forecast. This creates an auditable trail in the repository so the correct version of the forecasts used could be recovered even in cases when some forecasts were subsequently updated.

The Forecast Hub also collaborates with the CDC on the production of three additional ensemble forecasts each week. These are the COVIDhub-4\_week\_ensemble, COVIDhub-trained\_ensemble, and the COVIDhub\_CDC-ensemble. The COVIDhub-4\_week\_ensemble produces forecasts of incident cases, incident deaths, and cumulative deaths at horizons of 1 through 4 weeks ahead, and forecasts of incident hospitalizations at horizons of 1 through 28 days ahead and uses the equally-weighted median of all component forecasts at each location, forecast horizon, and quantile level. The COVIDhub-trained\_ensemble uses the same targets as the COVIDhub-4\_week\_ensemble but computes the models as a weighted median of the ten component forecasts with the best performance as measured by their weighted interval score (WIS) in the 12 weeks prior to the forecast date. The COVIDhub\_CDC-ensemble pulls forecasts of cases and hospitalizations from the COVIDhub-4\_week\_ensemble and forecasts of deaths from the COVIDhub-trained\_ensemble. The set of horizons that are included is updated regularly using rules developed by the CDC based on recent forecast performance.

Several other models are also combinations of some or all models submitted to the Forecast Hub. As of May 3<sup>rd</sup>, 2022, these models are FDANIHASU-Sweight, JHUAPL-SLPHospEns, and KITmetricslab-select\_ensemble. These models are flagged in the metadata using the Boolean metadata field, “ensemble\_of\_hub\_models”.

**Use scenarios.** *R package covidHubUtils.* We have developed the *covidHubUtils* R package at <https://github.com/reichlab/covidHubUtils> to facilitate bulk retrieval of forecasts for analysis and evaluation. Examples of how to use the *covidHubUtils* package and its functions can be found at <https://reichlab.io/covidHubUtils/>. The package supports loading forecasts from a local clone of the GitHub repository or by querying data from Zoltar. The package supports common actions for working with the data, such as loading specific subsets of forecasts, plotting forecasts, scoring forecasts, retrieving ground truth data, and many other utility functions to simplify working with the data.

*Visualization of forecasts in the COVID-19 Forecast Hub.* In addition to viewing forecasts in an R package, forecasts can also be viewed through our public website, <https://viz.covid19forecasthub.org/>. Through this tool, viewers can select the outcome, location, prediction interval, issue date of the truth data, and the models of interest to view forecasts. This tool can be used to see forecasts for the upcoming weeks, qualitatively evaluate model performance in past weeks, or visualize past performance based on available data at the time of forecasting (Fig. 4).

*Communicating results from the COVID-19 Forecast Hub.* Communication of probabilistic forecasts to the public is challenging<sup>21,22</sup>, and the best practices regarding the communication of outbreaks are still developing<sup>23</sup>. Starting in April 2020, the CDC published weekly summaries of these forecasts on their public website<sup>24</sup>, and these forecasts were occasionally used in public briefings by the CDC Director<sup>25</sup>. Additional examples of the communication of Forecast Hub data can be viewed through weekly reports generated by the Forecast Hub team for dissemination to the general public, including state and local departments of health (<https://covid19forecasthub.org/doc/reports/>). On December 22nd, 2021, the CDC ceased communication of case forecasts due to low reliability of these forecasts (<https://www.cdc.gov/coronavirus/2019-ncov/science/forecasting/forecasts-cases.html>).

## Discussion

We present here the US COVID-19 Forecast Hub, a data repository that stores structured forecasts of COVID-19 cases, hospitalizations, and deaths in the United States. The Forecast Hub is an important asset for visualizing, evaluating, and generating aggregate forecasts. It also demonstrates the highly collaborative effort that has gone into COVID-19 modeling efforts. This open-source data repository is beneficial for researchers, modelers, and casual viewers interested in forecasts of COVID-19. The website was viewed over half a million times in the first two years of the pandemic.

The US COVID-19 Forecast Hub is a unique, large-scale, collaborative infectious disease modeling effort. The Forecast Hub emerged from years of collaborative modeling efforts that started as government sponsored forecasting “challenges”. These collaborations are distinct from modeling efforts of individual teams, as the Forecast Hub has created open collaborative systems that facilitate model collection, curation, comparison, and combination, often in direct collaboration with governmental public health agencies<sup>26–28</sup>. The Forecast Hub built on these past efforts by developing a new quantile-based data format as well as automated data submission and validation procedures. Additionally, the scale of the collaborative effort for the US COVID-19 Forecast Hub has exceeded prior COVID-19 forecasting efforts by an order of magnitude in terms of the number of participating teams and forecasts collected. Finally, the infrastructure developed for the US COVID-19 Forecast Hub has been adapted for use by a number of other modeling hubs, including the US COVID-19 Scenario Modeling Hub<sup>17</sup>, the European COVID-19 Forecast Hub<sup>15</sup>, the German/Polish COVID-19 Forecasting Hub<sup>16</sup>, the German COVID-19 Hospitalization Nowcasting Hub<sup>29</sup>, and the 2022 US CDC Influenza Hospitalization Forecasting challenge<sup>30</sup>.

The Forecast Hub has played a critical role in collecting forecasts in a single format from over 100 different prediction models and making these data available to a wide variety of stakeholders during the COVID-19

Outcome: 
 Location: 
 Interval: 

Select Truth Data:

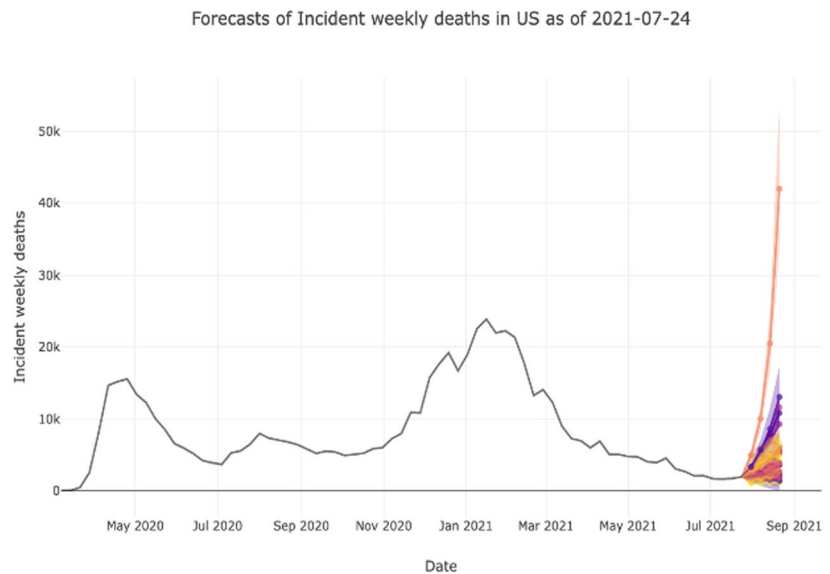
- 
- Current (2021-12-11)
- 
- As of 2021-07-24

Select Models: 

Shuffle Colours

- 
- COVIDhub-ensemble
- 
- COVIDhub-baseline
- 
- Alpert-pwllnod
- 
- BPagano-RtDriven
- 
- CEID-Walk
- 
- Columbia\_UNC-SurvCon
- 
- CovidAnalytics-DELPHI
- 
- COVIDhub-4\_week\_ensemble
- 
- COVIDhub-trained\_ensemble
- 
- CU-select
- 
- DDS-NBDS

**Most forecasts have failed to reliably predict rapid changes in the trends of reported cases and hospitalizations. Due to this limitation, they should not be relied upon for decisions about the possibility or timing of rapid changes in trends.**



**Fig. 4** Visualization tool updated weekly by the US COVID-19 Forecast Hub displays model forecasts and truth data at selected forecast dates, locations, forecast outcomes and PI levels. US national level incident death forecasts from 39 models are shown with point values and a 50% PI. These forecasts are for 1 through 4 week ahead horizons. Data used for forecasting were generated on July 24th, 2021. The visualization tool is available at: <https://viz.covid19forecasthub.org>.

pandemic. While some of these teams register their forecasts in other publicly available locations, many teams do not. Thus the Forecast Hub is the only location where many teams' forecasts are available. In addition to curating data from other models, the Forecast Hub has also played a central role in synthesizing the outputs of models together. The Forecast Hub has generated an ensemble forecast, which has been used in official communications by the CDC, every week since April 2020. The ensemble model for incident deaths, a median aggregate of all other eligible models, was consistently the most accurate model when aggregated across forecast targets, weeks, and locations, even though it was rarely the single most accurate forecast for any single prediction<sup>2</sup>.

The US COVID-19 Forecast Hub has built a specific set of open-source tools that have facilitated the development of operational stand-alone and ensemble forecasts for the pandemic. However, the structure of the tools is quite general and could be adapted for use in other real-time prediction efforts. Additionally, the Forecast Hub infrastructure and data described represent best practices for collecting, aggregating, and disseminating forecasts<sup>31</sup>. The US COVID-19 Forecast Hub has developed and operationalized one standardized forecast format, time-stamped submissions, open access, and a collection of tools to facilitate working with the data.

The data in this hub will be useful in the future for continuing analysis and comparisons of forecasting methods. The data can also be used as an exploratory dataset for creating and testing novel models and methods for model analysis (e.g., new ways to create an ensemble or post hoc forecast calibration methods). Because the data serve as an open repository of the state of the art in infectious disease forecasting, they will also be helpful as a retrospective reference point for comparison when new forecasting models are developed.

Model coordination efforts occur in many fields –including climate science<sup>32</sup>, ecology<sup>33</sup>, and space weather<sup>34</sup>, among others– to inform policy decisions by curating many models and synthesizing their outputs and uncertainties. Such efforts ensure that individual model outputs may indeed be easily compared to and assimilated with one another, and thus play a role in making scientific research more rigorous and transparent. As the use of advanced computational models becomes more commonplace in a wide range of scientific fields, model coordination projects and model output standardization efforts will play an increasingly important role in ensuring that policy makers can be provided with a unified set of model outputs.

## Methods

**Forecast assumptions.** Forecasters used a variety of assumptions to build models and generate predictions. Forecasting approaches include statistical or machine learning models, mechanistic models incorporating disease transmission dynamics, and combinations of multiple approaches<sup>2</sup>. Teams have also included varying assumptions regarding future changes in policies and social distancing measures, the transmissibility of COVID-19, vaccination rates, and the spread of new virus variants throughout the United States.

**Weekly submissions.** A forecast submission consists of a single comma-separated value (CSV) file submitted via pull request to the GitHub repository. Forecast submissions are validated for technical accuracy and formatting (see below) using automated checks implemented by continuous integration servers before being merged. To be included in the weekly ensemble model, teams were required to submit their forecast on Sunday or prior to a deadline on Monday. The majority of teams contributing to the dataset submitted forecasts to the Forecast Hub repository on Sunday or Monday, although some teams submitted at other times depending on their model production schedule.

**Exclusion criteria.** No forecasts were excluded from the dataset due to the forecast values or the background experience of the forecasters. Forecast files were only rejected if they did not meet the automatic formatting criteria implemented through automatic GitHub checks<sup>55</sup>. These included checks to ensure that, among other criteria:

- A forecast file is submitted no more than two days after it has been created (to ensure forecasts submitted were truly prospective). The creation date is based on the date in the filename created by the submitting team.
- The forecast dates in the content of the file are in the format YYYY-MM-DD and must match the creation date.
- Quantile forecasts do not contain any quantiles at probability levels other than the required levels (see Forecast Format section below).

**Updates to files.** To ensure that forecasting is done in real-time, all forecasts are required to be submitted to the Forecast Hub within 2 days of the forecast date, which is listed in a column within each forecast file. Although occasional late submissions were accepted through January 2021, the policy was updated to not accept late forecasts due to missed deadlines, updated modeling methods, or other reasons.

Exceptions to this policy were made if there was a bug that affected the forecasts in the original submission or if a new team joined. If there was a bug, teams were required to submit a comment with their updated submission affirming that there was a bug and that the forecast was only produced using data that were available at the time of the original submission. In the case of updates to forecast data, both the old and updated versions of the forecasts can be accessed either through the GitHub commit history or through time-stamped queries of the forecasts in the Zoltar database. Note that an updated forecast can include “retracting” a particular set of predictions in the case when an initial forecast was not able to be updated. When new teams join the Forecast Hub, they can submit late forecasts if they can provide publicly available evidence that the forecasts were made in real-time (e.g., GitHub commit history).

**Ground truth data.** Data from the JHU CSSE dataset<sup>36</sup> are used as the ground truth data for cases and deaths. Data from the HealthData.gov system for state-level hospitalizations are used for the hospitalization outcome. JHU CSSE obtained counts of cases and deaths by collecting and aggregating reports from state and local health departments. HealthData.gov contains reports of hospitalizations assembled by the U.S. Department of Health and Human Services. Teams were encouraged to use these sources to build models. Although hospitalization forecasts were collected starting in March 2020, hospitalization data from HealthData.gov were only available later, and we started encouraging teams to target these data in November 2020. Some teams used alternate data sources, including the NYTimes, USAFacts, US Census data, and other signals<sup>2</sup>. Versions of truth data from JHU CSSE, USAFacts, and the NYTimes are stored in the GitHub repository.

Previous reports of ground truth data for past time points were occasionally updated as new records became available, definitions of reportable cases, deaths, or hospitalizations changed, or errors in data collection were identified and corrected. These revisions to the data are sometimes quite substantial<sup>35,36</sup>, and for purposes such as retrospective ensemble construction, it is necessary to use the data that would have been available in real-time. The historically versioned data can be accessed either through GitHub commit records, data versions released on HealthData.gov, or third-party tools such as the covidcast API provided by the Delphi group at Carnegie Mellon University or the *covidData* R package<sup>37</sup>.

**Model designation.** Each model stored in the repository must have a classification of “primary,” “secondary,” or “other.” Each team must only have one “primary” model. Teams submitting multiple models with similar forecasting approaches can use the designations “secondary” or “other” for their models. Models with the designation “primary” are included in evaluations, the weekly ensemble, and the visualization. The “secondary” label is designed for models that have a substantive methodological difference than a team’s “primary” model. Models with the designation “secondary” are included only in the ensemble and the visualization. The “other” label is designed for models that are small variations on a team’s “primary” model. Models with the designation “other” are not included in evaluations, the ensemble build, or the visualization.

**GitHub repository data structure.** Forecasts in the GitHub repository are available in subfolders organized by model. Folders are named with a team name and model name, and each folder includes a metadata file and

forecast files. Forecast CSV files are named using the format “<YYYY-MM-DD>-<team abbreviation>-<model abbreviation>.csv”. In these files, each row contains data for a single outcome, location, horizon, and point or quantile prediction as described above.

The metadata file for each team, named using the format “metadata-<team abbreviation>-<model abbreviation>.txt”, contains relevant information about the team and the model that the team is using to generate forecasts.

**Forecast format.** Forecasts were required to be submitted in the format of point predictions and/or quantile predictions. Point predictions represented single “best” predictions with no uncertainty, typically representing a mean or median prediction from the model. Quantile predictions are an efficient format for storing predictive distributions of a wide range of outcomes.

Quantile representations of predictive distributions lend themselves to natural computations of, for example, pinball loss or a weighted interval score, both proper scoring rules that can be used to evaluate forecasts<sup>38</sup>. However, they do not capture the structure of the tails of the predictive distribution beyond the reported quantiles. Additionally, the quantile format does not preserve any information on correlation structures between different outcomes.

The forecast data in this dataset are stored in seven columns:

1. **forecast\_date** - the date the forecast was made in the format YYYY-MM-DD.
2. **target** - a character string giving the number of days/weeks ahead that are being forecasted (horizon) and the outcome. Horizons must be one of the following:
  - a. “N wk ahead cum death” where N is a number between 1 and 20
  - b. “N wk ahead inc death” where N is a number between 1 and 20
  - c. “N wk ahead inc case” where N is a number between 1 and 8
  - d. “N day ahead inc hosp” where N is a number between 0 and 130
3. **target\_end\_date** - a character string representing the date for the forecast target in the format YYYY-MM-DD. For “k day-ahead” targets, target\_end\_date will be k days after forecast\_date. For “k week ahead” targets, target\_end\_date will be the Saturday at the end of the specified epidemic week, as described above.
4. **location** - character string of Federal Information Processing Standard Publication (FIPS) codes identifying U.S. states, counties, territories, and districts as well as “US” for national forecasts. The values for the FIPS codes are available in a CSV file in the repository and as a data object in the covidHubUtils R package for convenience.
5. **type** - character value of “point” or “quantile” indicating whether the row corresponds to a point forecast or a quantile forecast.
6. **quantile** - the probability level for a quantile forecast. For death and hospitalization forecasts, forecasters can submit quantiles at 23 probability levels: 0.01, 0.025, 0.05, 0.10, 0.15 . . . , 0.95, 0.975, and 0.99. For cases, teams can submit up to 7 quantiles at levels .025, 0.100, 0.250, 0.5, 0.750, 0.900 and 0.975. If the forecast “type” is equal to “point”, the value in the quantile column is equal to “NA”.
7. **value** - non-negative numbers indicating the “point” or “quantile” prediction for the row. For a “point” prediction, the value is simply the value of that point prediction for the target and location associated with that row. For a “quantile” prediction, the model predicts that the eventual observation will be less than or equal to this value with the probability given by the quantile probability level.

**Metadata format.** Each team documents their model information in a metadata file which is required along with the first forecast submission. Each team is asked to record their model’s design and assumptions, the model contributors, the team’s website, information regarding the team’s data sources, and a brief model description. Teams may update their metadata file periodically to keep track of minor changes to a model.

A standard metadata file should be a YAML file with the following required fields in a specific order:

1. **team\_name** - the name of the team (less than 50 characters).
2. **model\_name** - the name of the model (less than 50 characters).
3. **model\_abbr** - an abbreviated and uniquely identified name for the model that is less than 30 alphanumeric characters. The model abbreviation must be in the format of ‘[team\_abbr]-[model\_abbr]’ where each of the ‘[team\_abbr]’ and ‘[model\_abbr]’ are text strings that are each less than 15 alphanumeric characters that do not include a hyphen or whitespace.
4. **model\_contributors** - a list of all individuals involved in the forecasting effort, affiliations, and email addresses. At least one contributor needs to have a valid email address. The syntax of this field should be name1 (affiliation1) <user@address>, name2 (affiliation2) <user2@address2>
5. **website\_url\*** - a URL to a website that has additional data about the model. We encourage teams to submit the most user-friendly version of the model, e.g., a dashboard, or similar, that displays the model forecasts. If there is an additional data repository where forecasts and other model code are stored, this can be included in the methods section. If only a more technical site, e.g., GitHub repo, exists, that link should be included here.
6. **license** - one of the acceptable license types in the Forecast Hub. We encourage teams to submit as a “cc-by-4.0” to allow the broadest possible use, including private vaccine production (which would be excluded



by the “cc-by-nc-4.0” license). If the value is “LICENSE.txt”, then a LICENSE.txt file must exist within the model folder and provide a license.

7. **team\_model\_designation** - upon initial submission this field should be one of “primary”, “secondary” or “other”.
8. **methods** - a brief description of the forecasting methodology that is less than 200 Characters.
9. **ensemble\_of\_hub\_models** - a Boolean value (‘true’ or ‘false’) that indicates whether a model combines multiple hub models into an ensemble.

\*in earlier versions of the metadata files, this field was named **model\_output**.

Teams are also encouraged to add model information with optional fields described below:

1. **institution\_affil** - University or company names, if relevant.
2. **team\_funding** - Like an acknowledgement in a manuscript, teams can acknowledge funding here.
3. **repo\_url** - A GitHub repository url or something similar.
4. **twitter\_handles** - one or more Twitter handles (without the @) separated by commas.
5. **data\_inputs** - A description of the data sources used to inform the model and the truth data targeted by model forecasts. Common data sources are NYTimes, JHU CSSE, COVIDTracking, Google mobility, HHS hospitalization, etc. An example description could be “case forecasts use NYTimes data and target JHU CSSE truth data, hospitalization forecasts use and target HHS hospitalization data”
6. **citation** - a url (doi link preferred) to an extended description of the model, e.g., blog post, website, pre-print, or peer-reviewed manuscript.
7. **methods\_long** - An extended description of the methods used in the model. If the model is modified, this field can be used to provide the date of the modification and a description of the change.

## Technical Validations

Two similar but distinct validation processes were used to validate data on the GitHub repository and on Zoltar.

**Validations during data submission.** Validations were set up using GitHub Actions to manage the continuous integration and automated data checking<sup>35</sup>. Teams submitted their metadata files and forecasts through pull requests on GitHub. Each time a new pull request was submitted, a validation script ran on all new or updated files in the pull request to test for their validity. Separate checks ran on metadata file changes and forecast data file changes.

The metadata file for each team was required to be in a valid YAML format, and a set of specific checks were required before a new metadata file could be merged into the repository. Checks included ensuring that all metadata files are using the rules outlined in the Metadata Format section, that the proposed team and model names do not conflict with existing names, that a valid license for data reuse is specified, and that a valid model designation was present. Additionally, each team must have their files under a folder named consistently with their *model\_abbrev*, and they must only have one *primary* model.

New or changed forecast data files for each team were required to pass a series of checks for data formatting and validity. These checks also ensured that the forecast data files did not meet any of the exclusion criteria (see the Methods section for specific rules). Each forecast file is subject to the validation rules documented at: <https://github.com/reichlab/covid19-forecast-hub/wiki/Forecast-Checks>.

**Validations on Zoltar.** When a new forecast file is uploaded to Zoltar, unit tests are run on the file to ensure that forecast elements contain a valid structure. (For a detailed specification of the structure of forecast elements, see <https://docs.zoltardata.com/validation/>.) If a forecast file does not pass all unit tests, the upload will fail and the forecast file will not be added to the database; only when all tests pass will the new forecast be added to Zoltar. The validations in place on GitHub ensure that only valid forecasts will be uploaded to Zoltar.

**Truth data.** Raw truth data from multiple sources including JHU, NYTimes, USAFacts, and Healthdata.gov, were downloaded and reformatted using the scripts in the R packages *covidHubUtils* (<https://github.com/reichlab/covidHubUtils>) and *covidData* (<https://github.com/reichlab/covidData>). This data generating process is automated by GitHub Actions every week, and the results (called “truth data”) are directly uploaded to the Forecast Hub repository and Zoltar. Specifically, case and death raw truth data were aggregated to a weekly level, and all three outcomes (cases, deaths, and hospitalization) are reformatted for use within the Forecast Hub.

## Data availability

The datasets generated and/or analyzed during the current study are available in the [reichlab/covid19-forecast-hub](https://github.com/reichlab/covid19-forecast-hub) GitHub repository, <https://github.com/reichlab/covid19-forecast-hub>. A permanent DOI for the GitHub repository for the Forecast Hub is available as <https://doi.org/10.5281/zenodo.5208210><sup>10</sup>. Forecast data are also available through our Zoltar forecast repository at <https://zoltardata.com/project/44>.

## Code availability

All code for forecast data validation and storage associated with the current submission is available in the Forecast Hub GitHub repository, <https://github.com/reichlab/covid19-forecast-hub-validations>. Ensemble models are built with code in the *covidEnsembles* R package, <https://github.com/reichlab/covidEnsembles>. The code for forecast analysis is at <https://doi.org/10.5281/zenodo.5207940><sup>12</sup> (*covidHubUtils* R package) and <https://doi.org/10.5281/zenodo.5208224><sup>7</sup> (*covidData* R package). Any updates will also be published on Zenodo.

Received: 17 January 2022; Accepted: 29 June 2022;

Published online: 01 August 2022

## References

- Haghani, M. & Bliemer, M. C. J. Covid-19 pandemic and the unprecedented mobilisation of scholarly efforts prompted by a health crisis: Scientometric comparisons across SARS, MERS and 2019-nCoV literature. *Scientometrics* **125**, 2695–2726 (2020).
- Cramer, E. Y. *et al.* Evaluation of individual and ensemble probabilistic forecasts of COVID-19 mortality in the United States. *Proc. Natl. Acad. Sci. U. S. A.* **119**, e2113561119 (2022).
- Brooks, L. C. *et al.* Comparing ensemble approaches for short-term probabilistic COVID-19 forecasts in the U.S. *International Institute of Forecasters* (2020).
- Ray, E. L. *et al.* Comparing trained and untrained probabilistic ensemble forecasts of COVID-19 cases and deaths in the United States. *arXiv [stat.ME]* (2022).
- Taylor, J. W. & Taylor, K. S. Combining Probabilistic Forecasts of COVID-19 Mortality in the United States. *Eur. J. Oper. Res.* <https://doi.org/10.1016/j.ejor.2021.06.044> (2021).
- CSSEGISandData/COVID-19. *GitHub* <https://github.com/CSSEGISandData/COVID-19>.
- Ray, E. *et al.* reichlab/covidData: repository release for Zenodo. *Zenodo* <https://doi.org/10.5281/zenodo.5208224> (2021).
- US COVID-19 cases and deaths by state. <https://usafacts.org/visualizations/coronavirus-covid-19-spread-map/> (2021).
- HealthData.gov. *healthdata.gov* <https://healthdata.gov/>. (2022).
- Cramer, E. *et al.* reichlab/covid19-forecast-hub: release for Zenodo, 20210816. *Zenodo* <https://doi.org/10.5281/zenodo.5208210> (2021).
- Reich, N. G., Cornell, M., Ray, E. L., House, K. & Le, K. The Zoltra forecast archive, a tool to standardize and store interdisciplinary prediction research. *Sci Data* **8**, 59 (2021).
- Wang, S. Y. *et al.* reichlab/covidHubUtils: repository release for Zenodo. *Zenodo* <https://doi.org/10.5281/zenodo.5207940> (2021).
- Cornell, M., Gruson, H., Wang, S. Y. & Ray, E. reichlab/zoltra: Release for Zenodo, 20210816. *Zenodo* <https://doi.org/10.5281/zenodo.5207856> (2021).
- Cornell, M. *et al.* reichlab/zoltpy: Release for Zenodo, 20210816. *Zenodo* <https://doi.org/10.5281/zenodo.5207932> (2021).
- covid19-forecast-hub-europe: European Covid-19 Forecast Hub.* (Github).
- covid19-forecast-hub-de: German and Polish COVID-19 Forecast Hub.* (Github).
- Borchering, R. K. *et al.* Modeling of Future COVID-19 Cases, Hospitalizations, and Deaths, by Vaccination Rates and Nonpharmaceutical Intervention Scenarios - United States, April-September 2021. *MMWR Morb. Mortal. Wkly. Rep.* **70**, 719–724 (2021).
- COVID 19 scenario model hub. <https://covid19scenariomodelinghub.org/>.
- MMWR Week Fact Sheet. National Notifiable Diseases Surveillance System, Division of Health Informatics and Surveillance, National Center for Surveillance, Epidemiology and Laboratory Services. Downloaded from [http://www.cdc.gov/nndss/document/MMWR\\_Week\\_overview.pdf](http://www.cdc.gov/nndss/document/MMWR_Week_overview.pdf).
- Nicholas G. Reich, Ryan J. Tibshirani, Evan L. Ray, Roni Rosenfeld. On the predictability of COVID-19. *International Institute of Forecasters* <https://forecasters.org/blog/2021/09/28/on-the-predictability-of-covid-19/> (2021).
- Gigerenzer, G., Hertwig, R., van den Broek, E., Fasolo, B. & Katsikopoulos, K. V. 'A 30% chance of rain tomorrow': how does the public understand probabilistic weather forecasts? *Risk Anal* **25**, 623–629 (2005).
- Raftery, A. E. Use and Communication of Probabilistic Forecasts. *Stat. Anal. Data Min* **9**, 397–410 (2016).
- Tracy L. Rouleau, L. U. Risk Communication and Behavior Best Practices and Research Findings. National Oceanic and Atmospheric Administration. 1-66.(2016).
- CDC. COVID-19 Forecasts: Deaths. <https://www.cdc.gov/coronavirus/2019-ncov/covid-data/forecasting-us.html> (2021).
- Waldrop, T., Andone, D. & Holcombe, M. CDC warns new Covid-19 variants could accelerate spread in US. *CNN* (2021).
- Johansson, M. A. *et al.* An open challenge to advance probabilistic forecasting for dengue epidemics. *Proc. Natl. Acad. Sci. U. S. A.* **116**, 24268–24274 (2019).
- Reich, N. G. *et al.* Accuracy of real-time multi-model ensemble forecasts for seasonal influenza in the U.S. *PLoS Comput. Biol.* **15**, e1007486 (2019).
- Viboud, C. *et al.* The RAPIDD ebola forecasting challenge: Synthesis and lessons learnt. *Epidemics* **22**, 13–21 (2018).
- hospitalization-nowcast-hub: Collecting nowcasts of the 7-day hospitalization incidence in Germany.* <https://github.com/KITmetricslab/hospitalization-nowcast-hub> (2022).
- CDC. FluSight: Flu Forecasting. *Centers for Disease Control and Prevention* <https://www.cdc.gov/flu/weekly/fluSight/index.html> (2021).
- Reich, N. G. *et al.* Collaborative hubs: making the most of predictive epidemic modeling. *Am. J. Public Health* e1–e4 (2022).
- IPCC — Intergovernmental Panel on Climate Change. <https://www.ipcc.ch/> (2022).
- The Inter-Sectoral Impact Model Intercomparison Project. <https://www.isimip.org/about/marine-ecosystems-fisheries/> (2022).
- CCMC: Community Coordinated Modeling Center. <https://ccmc.gsfc.nasa.gov/index.php> (2022).
- Hannan, A., Huang, Y. D. & Wang, S. Y. reichlab/covid19-forecast-hub-validations: Release for Zenodo, 20210816. *Zenodo* <https://doi.org/10.5281/zenodo.5207934> (2021).
- Dong, E., Du, H. & Gardner, L. An interactive web-based dashboard to track COVID-19 in real time. *Lancet Infect. Dis.* **20**, 533–534 (2020).
- Reinhart, A. *et al.* An open repository of real-time COVID-19 indicators. *Proc. Natl. Acad. Sci. USA.* **118**, (2021).
- Bracher, J., Ray, E. L., Gneiting, T. & Reich, N. G. Evaluating epidemic forecasts in an interval format. *PLoS Comput. Biol.* **17**, e1008618 (2021).

## Acknowledgements

This work has been supported in part by the US Centers for Disease Control and Prevention (1U01IP001122) and the National Institutes of General Medical Sciences (R35GM119582). The content is solely the responsibility of the authors and does not necessarily represent the official views of the CDC, FDA, NIGMS or the National Institutes of Health. Johannes Bracher was supported by the Helmholtz Foundation via the SIMCARD Information & Data Science Pilot Project. For teams that reported receiving funding for their work, we report

the sources and disclosures below. *Apert-pwllnod*: Natural Sciences and Engineering Research Council of Canada. *Caltech-CS156*: Gary Clinard Innovation Fund. *CEID-Walk*: University of Georgia. *CMU-TimeSeries*: CDC Center of Excellence, gifts from Google and Facebook. *Covid19Sim*: National Science Foundation awards 2035360 and 2035361, Gordon and Betty Moore Foundation, and Rockefeller Foundation to support the work of the Society for Medical Decision Making COVID-19 Decision Modeling Initiative. *COVIDhub*: This work has been supported by the US Centers for Disease Control and Prevention (1U01IP001122) and the National Institutes of General Medical Sciences (R35GM119582). The content is solely the responsibility of the authors and does not necessarily represent the official views of the CDC, NIGMS or the National Institutes of Health. Johannes Bracher was supported by the Helmholtz Foundation via the SIMCARD Information & Data Science Pilot Project. Tilmann Gneiting gratefully acknowledges support by the Klaus Tschira Foundation. *CUBoulder*. *CUB-PopCouncil*: The Population Council, and the University of Colorado Population Center (CUPC) funded by Eunice Kennedy Shriver National Institute of Child Health & Human Development of the National Institutes of Health (P2CHD066613). *CU-select*: NSF DMS-2027369 and a gift from the Morris-Singer Foundation. *DDS-NBDS*: NSF III-1812699. *epiforecasts-ensemble1*: Wellcome Trust (210758/Z/18/Z). *FDANIHASU*: supported by the Intramural Research Program of the NIH/NIDDK. *GT CHHS-COVID19*: William W. George Endowment, Virginia C. and Joseph C. Mello Endowment, NSF DGE-1650044, NSF MRI 1828187, research cyberinfrastructure resources and services provided by the Partnership for an Advanced Computing Environment (PACE) at Georgia Tech, and the following benefactors at Georgia Tech: Andrea Laliberte, Joseph C. Mello, Richard “Rick” E. & Charlene Zalesky, and Claudia & Paul Raines, CDC MInD-Healthcare U01CK000531-Supplement. *GT-DeepCOVID*: This work was supported in part by the NSF (Expeditions CCF-1918770, CAREER IIS-2028586, RAPID IIS-2027862, Medium IIS-1955883, Medium IIS-2106961, CCF-2115126), CDC MInD program, ORNL, faculty research award from Facebook and funds/computing resources from Georgia Tech. BA was supported by CDC-MIND U01CK000594 and start-up funds from University of Iowa. *IHME*: This work was supported by the Bill & Melinda Gates Foundation, as well as funding from the state of Washington and the National Science Foundation (award nocoviddata. FAIN: 2031096). *Imperial-ensemble1*: SB acknowledges funding from the Wellcome Trust (219415). *Institute of Business Forecasting*: IBF. *IowaStateLW-STEM*: NSF DMS-1916204, Iowa State University Plant Sciences Institute Scholars Program, NSF CCF-1934884, Laurence H. Baker Center for Bioinformatics and Biological Statistics. *IUPUI CIS*: NSF. *JHU CSSE-DECOM*: JHU CSSE: National Science Foundation (NSF) RAPID “Real-time Forecasting of COVID-19 risk in the USA”. 2021-2022. Award ID: 2108526. National Science Foundation (NSF) RAPID “Development of an interactive web-based dashboard to track COVID-19 in real-time”. 2020. Award ID: 2028604. *JHU IDD-CovidSP*: State of California, US Dept of Health and Human Services, US Dept of Homeland Security, Johns Hopkins Health System, Office of the Dean at Johns Hopkins Bloomberg School of Public Health, Johns Hopkins University Modeling and Policy Hub, Centers for Disease Control and Prevention. (5U01CK000538-03), University of Utah Immunology, Inflammation, & Infectious Disease Initiative (26798 Seed Grant). *JHU\_UNC\_GAS-StatMechPool*: NIH NIGMS: R01GM140564. *JHUAPL-Bucky*: US Dept of Health and Human Services. *KITmetricslab-select\_ensemble*: Daniel Wolfram was supported by the Klaus Tschira Foundation as well as the Helmholtz Association under the joint research school “HIDSS4Health – Helmholtz Information and Data Science School for Health”. Moreover, his work was funded by the German Federal Ministry of Education and Research (BMBF) and the Baden-Württemberg Ministry of Science as part of the Excellence Strategy of the German Federal and State Governments. *LANL-GrowthRate*: LANL LDRD 20200700ER. *LosAlamos\_NAU-CModel* *SDVaxVar*: NIH/NIGMS grant R01GM111510; LANL-Directed Research and Development Program, Defense Threat Reduction Agency; Laboratory-Directed Research and Development Program project 20220268ER. *LU-compUncertLab*: UMass Amherst Center of Excellence for Influenza, Institute for Data Intelligent Systems and Computation. *MIT-Cassandra*: MIT Quest for Intelligence. *MOBS-GLEAM\_COVID*: COVID Supplement CDC-HHS-6U01IP001137-01; CA NU38OT000297 from the Council of State and Territorial Epidemiologists (CSTE). *NCSU-COVSIM*: Cooperative Agreement NU38OT000297 from the CSTE and the CDC. *NotreDame-FRED*: NSF RAPID DEB 2027718. *NotreDame-mobility*: NSF RAPID DEB 2027718. *PSI-DRAFT*: NSF RAPID Grant # 2031536. *QJHong-Encounter*: NSF DMR-2001411 and DMR-1835939. *SDSC\_ISG-TrendModel*: The development of the dashboard was partly funded by the Fondation Privée des Hôpitaux Universitaires de Genève. *UA-EpiCovDA*: NSF RAPID Grant # 2028401. *UChicagoCHATTOPADHYAY-UNIT*: Defense Advanced Research Projects Agency (DARPA) #HR00111890043/P00004 (I. Chattopadhyay, University of Chicago). *UCSB-ACTS*: NSF RAPID IIS 2029626. *UCSD\_NEU-DeepGLEAM*: Google Faculty Award, W31P4Q-21-C-0014. *UMass-MechBayes*: NIGMS #R35GM119582, NSF #1749854, NIGMS #R35GM119582. *UMich-RidgeTfReg*: This project is funded by the University of Michigan Physics Department and the University of Michigan Office of Research. *USC-SikJalpha*: This material is based upon work supported by the National Science Foundation RAPID under Grant No. 2135784 with support from Centers for Disease Control and Prevention (CDC). *UVA-Ensemble*: National Institutes of Health (NIH) Grant 1R01GM109718, NSF BIG DATA Grant IIS-1633028, NSF Grant No.: OAC-1916805, NSF Expeditions in Computing Grant CCF-1918656, CCF-1917819, NSF RAPID CNS-2028004, NSF RAPID OAC-2027541, US Centers for Disease Control and Prevention 75D30119C05935, a grant from Google, University of Virginia Strategic Investment Fund award number SIF160, Defense Threat Reduction Agency (DTRA) under Contract No. HDTRA1-19-D-0007, and Virginia Dept of Health Grant VDH-21-501-0141. *Wadnawani AI-BayesOpt*: This study is made possible by the generous support of the American People through the United States Agency for International Development (USAID). The work described in this article was implemented under the TRACETB Project, managed by WIAI under the terms of Cooperative Agreement Number 72038620CA00006. The contents of this manuscript are the sole responsibility of the authors and do not necessarily reflect the views of USAID or the United States Government. *WalmartLabsML-LogForecasting*: Team acknowledges Walmart to support this study.

## Competing interests

AV, MC, and APP report grants from Metabiota Inc outside the submitted work.

## Additional information

**Correspondence** and requests for materials should be addressed to N.G.R.

**Reprints and permissions information** is available at [www.nature.com/reprints](http://www.nature.com/reprints).

**Publisher's note** Springer Nature remains neutral with regard to jurisdictional claims in published maps and institutional affiliations.



**Open Access** This article is licensed under a Creative Commons Attribution 4.0 International License, which permits use, sharing, adaptation, distribution and reproduction in any medium or format, as long as you give appropriate credit to the original author(s) and the source, provide a link to the Creative Commons license, and indicate if changes were made. The images or other third party material in this article are included in the article's Creative Commons license, unless indicated otherwise in a credit line to the material. If material is not included in the article's Creative Commons license and your intended use is not permitted by statutory regulation or exceeds the permitted use, you will need to obtain permission directly from the copyright holder. To view a copy of this license, visit <http://creativecommons.org/licenses/by/4.0/>.

© The Author(s) 2022

---

## US COVID-19 Forecast Hub Consortium

Tilmann Gneiting<sup>3,6</sup>, Anja Mühlemann<sup>7</sup>, Youyang Gu<sup>8</sup>, Yixian Chen<sup>9</sup>, Krishna Chintanippu<sup>9</sup>, Viresh Jivane<sup>9</sup>, Ankita Khurana<sup>9</sup>, Ajay Kumar<sup>9</sup>, Anshul Lakhani<sup>9</sup>, Prakhar Mehrotra<sup>9</sup>, Sujitha Pasumarty<sup>9</sup>, Monika Shrivastav<sup>9</sup>, Jialu You<sup>9</sup>, Nayana Bannur<sup>10</sup>, Ayush Deva<sup>10</sup>, Sansiddh Jain<sup>10</sup>, Mihir Kulkarni<sup>10</sup>, Srujana Merugu<sup>10</sup>, Alpan Raval<sup>10</sup>, Siddhant Shingi<sup>10</sup>, Avtansh Tiwari<sup>10</sup>, Jerome White<sup>10</sup>, Aniruddha Adiga<sup>11</sup>, Benjamin Hurt<sup>11</sup>, Bryan Lewis<sup>11</sup>, Madhav Marathe<sup>11,12</sup>, Akhil Sai Peddireddy<sup>13</sup>, Przemyslaw Porebski<sup>11</sup>, Srinivasan Venkatramanan<sup>11</sup>, Lijing Wang<sup>14,15</sup>, Maytal Dahan<sup>16</sup>, Spencer Fox<sup>17</sup>, Kelly Gaither<sup>16</sup>, Michael Lachmann<sup>18</sup>, Lauren Ancel Meyers<sup>17</sup>, James G. Scott<sup>19</sup>, Mauricio Tec<sup>20</sup>, Spencer Woody<sup>17</sup>, Ajitesh Srivastava<sup>21</sup>, Tianjian Xu<sup>22</sup>, Jeffrey C. Cegan<sup>23</sup>, Ian D. Dettwiller<sup>24</sup>, William P. England<sup>24</sup>, Matthew W. Farthing<sup>24</sup>, Glover E. George<sup>24</sup>, Robert H. Hunter<sup>24</sup>, Brandon Lafferty<sup>24</sup>, Igor Linkov<sup>23</sup>, Michael L. Mayo<sup>24</sup>, Matthew D. Parno<sup>25</sup>, Michael A. Rowland<sup>24</sup>, Benjamin D. Trump<sup>23</sup>, Samuel Chen<sup>26</sup>, Stephen V. Faraone<sup>27</sup>, Jonathan Hess<sup>27</sup>, Christopher P. Morley<sup>28</sup>, Asif Salekin<sup>29</sup>, Dongliang Wang<sup>28</sup>, Yanli Zhang-James<sup>27</sup>, Thomas M. Baer<sup>30</sup>, Sabrina M. Corsetti<sup>31</sup>, Marisa C. Eisenberg<sup>32</sup>, Karl Falb<sup>31</sup>, Yitao Huang<sup>31</sup>, Emily T. Martin<sup>33</sup>, Ella McCauley<sup>31</sup>, Robert L. Myers<sup>31</sup>, Tom Schwarz<sup>31</sup>, Graham Casey Gibson<sup>34</sup>, Daniel Sheldon<sup>35</sup>, Liyao Gao<sup>36</sup>, Yian Ma<sup>37</sup>, Dongxia Wu<sup>38</sup>, Rose Yu<sup>39,40</sup>, Xiaoyong Jin<sup>41</sup>, Yu-Xiang Wang<sup>41</sup>, Xifeng Yan<sup>41</sup>, YangQuan Chen<sup>38</sup>, Lihong Guo<sup>42</sup>, Yanting Zhao<sup>43</sup>, Jinghui Chen<sup>44</sup>, Quanquan Gu<sup>44</sup>, Lingxiao Wang<sup>44</sup>, Pan Xu<sup>44</sup>, Weitong Zhang<sup>44</sup>, Difan Zou<sup>44</sup>, Ishanu Chattopadhyay<sup>45</sup>, Yi Huang<sup>45</sup>, Guoqing Lu<sup>46</sup>, Ruth Pfeiffer<sup>47</sup>, Timothy Sumner<sup>48</sup>, Dongdong Wang<sup>49</sup>, Liqiang Wang<sup>49</sup>, Shunpu Zhang<sup>48</sup>, Zihang Zou<sup>49</sup>, Hannah Biegel<sup>50</sup>, Joceline Lega<sup>50</sup>, Fazole Hussain<sup>51</sup>, Zeina Khan<sup>51</sup>, Frank Van Bussel<sup>51</sup>, Steve McConnell<sup>52,53</sup>, Stephanie L. Guertin<sup>54</sup>, Christopher Hulme-Lowe<sup>55</sup>, V. P. Nagraj<sup>54</sup>, Stephen D. Turner<sup>54</sup>, Benjamín Bejar<sup>56</sup>, Christine Choirat<sup>56</sup>, Antoine Flahault<sup>57</sup>, Ekaterina Krymova<sup>56</sup>, Gavin Lee<sup>56</sup>, Elisa Manetti<sup>57</sup>, Kristen Namigai<sup>57</sup>, Guillaume Obozinski<sup>56</sup>, Tao Sun<sup>56</sup>, Dorina Thanou<sup>58</sup>, Xuegang Ban<sup>59</sup>, Yunfeng Shi<sup>60</sup>, Robert Walraven<sup>61</sup>, Qi-Jun Hong<sup>62,63</sup>, Axel van de Walle<sup>64</sup>, Michal Ben-Nun<sup>65</sup>, Steven Riley<sup>66</sup>, Pete Riley<sup>65</sup>, James Turtle<sup>65</sup>, Duy Cao<sup>67</sup>, Joseph Galasso<sup>67</sup>, Jae H. Cho<sup>68</sup>, Areum Jo<sup>68</sup>, David DesRoches<sup>69</sup>, Pedro Forli<sup>70</sup>, Bruce Hamory<sup>71</sup>, Ugur Koyluoglu<sup>72</sup>, Christina Kyriakides<sup>73</sup>, Helen Leis<sup>74</sup>, John Milliken<sup>72</sup>, Michael Moloney<sup>72</sup>, James Morgan<sup>72</sup>, Ninad Nirgudkar<sup>75</sup>, Gokce Ozcan<sup>72</sup>, Noah Pivonka<sup>74</sup>, Matt Ravi<sup>75</sup>, Chris Schrader<sup>74</sup>, Elizabeth Shakhnovich<sup>74</sup>, Daniel Siegel<sup>72</sup>, Ryan Spatz<sup>75</sup>, Chris Stiefeling<sup>76</sup>, Barrie Wilkinson<sup>77</sup>, Alexander Wong<sup>73</sup>, Sean Cavany<sup>78</sup>, Guido España<sup>78</sup>, Sean Moore<sup>78</sup>, Rachel Oidtman<sup>78</sup>, Alex Perkins<sup>78</sup>, Julie S. Ivy<sup>79</sup>, Maria E. Mayorga<sup>79</sup>, Jessica Mele<sup>79</sup>, Erik T. Rosenstrom<sup>79</sup>, Julie L. Swann<sup>79</sup>, Andrea Kraus<sup>80</sup>, David Kraus<sup>80</sup>, Jiang Bian<sup>81</sup>, Wei Cao<sup>81</sup>, Zhifeng Gao<sup>81</sup>, Juan Lavista Ferres<sup>81</sup>, Chaozhuo Li<sup>81</sup>, Tie-Yan Liu<sup>81</sup>, Xing Xie<sup>81</sup>, Shun Zhang<sup>81</sup>, Shun Zheng<sup>81</sup>, Matteo Chinazzi<sup>82</sup>, Alessandro Vespignani<sup>82,83</sup>, Xinyue Xiong<sup>82</sup>, Jessica T. Davis<sup>82</sup>, Kunpeng Mu<sup>82</sup>, Ana Pastore y Piontti<sup>82</sup>, Jackie Baek<sup>84</sup>, Vivek Farias<sup>85</sup>, Andreea Georgescu<sup>84</sup>, Retsef Levi<sup>85</sup>, Deeksha Sinha<sup>84</sup>, Joshua Wilde<sup>84</sup>, Andrew Zheng<sup>84</sup>, Omar Skali Lami<sup>84</sup>, Amine Bennouna<sup>84</sup>, David Nze Ndong<sup>85</sup>,

Georgia Perakis<sup>84,85</sup>, Divya Singhvi<sup>86</sup>, Ioannis Spantidakis<sup>84</sup>, Leann Thayaparan<sup>84</sup>, Asterios Tsiourvas<sup>84</sup>, Shane Weisberg<sup>84</sup>, Ali Jadbabaie<sup>87</sup>, Arnab Sarker<sup>87</sup>, Devavrat Shah<sup>87</sup>, Leo A. Celis<sup>88</sup>, Nicolas D. Penna<sup>88</sup>, Saketh Sundar<sup>89</sup>, Abraham Berlin<sup>90</sup>, Parth D. Gandhi<sup>91</sup>, Thomas McAndrew<sup>92</sup>, Matthew Piriya<sup>90</sup>, Ye Chen<sup>93</sup>, William Hlavacek<sup>94</sup>, Yen Ting Lin<sup>95</sup>, Abhishek Mallela<sup>96</sup>, Ely Miller<sup>97</sup>, Jacob Neumann<sup>98</sup>, Richard Posner<sup>97</sup>, Russ Wolfinger<sup>99</sup>, Lauren Castro<sup>100</sup>, Geoffrey Fairchild<sup>100</sup>, Isaac Michaud<sup>101</sup>, Dave Osthus<sup>101</sup>, Daniel Wolfram<sup>3,102</sup>, Dean Karlen<sup>103,104</sup>, Mark J. Panaggio<sup>105</sup>, Matt Kinsey<sup>105</sup>, Luke C. Mullany<sup>105</sup>, Kaitlin Rainwater-Lovett<sup>105</sup>, Lauren Shin<sup>105</sup>, Katharine Tallaksen<sup>105</sup>, Shelby Wilson<sup>105</sup>, Michael Brenner<sup>106,107</sup>, Marc Coram<sup>106</sup>, Jessie K. Edwards<sup>108</sup>, Keya Joshi<sup>109</sup>, Ellen Klein<sup>106</sup>, Juan Dent Hulse<sup>110</sup>, Kyra H. Grantz<sup>110</sup>, Alison L. Hill<sup>111</sup>, Kathryn Kaminsky<sup>112</sup>, Joshua Kaminsky<sup>110</sup>, Lindsay T. Keegan<sup>113</sup>, Stephen A. Lauer<sup>110</sup>, Elizabeth C. Lee<sup>110</sup>, Joseph C. Lemaître<sup>114</sup>, Justin Lessler<sup>110,115,116</sup>, Hannah R. Meredith<sup>110</sup>, Javier Perez-Saez<sup>110</sup>, Sam Shah<sup>117</sup>, Claire P. Smith<sup>110</sup>, Shaun A. Truelove<sup>118</sup>, Josh Wills<sup>119</sup>, Lauren Gardner<sup>120</sup>, Maximilian Marshall<sup>120</sup>, Kristen Nixon<sup>120</sup>, John C. Burant<sup>121</sup>, Jozef Budzinski<sup>122</sup>, Wen-Hao Chiang<sup>123</sup>, George Mohler<sup>123</sup>, Junyi Gao<sup>124</sup>, Lucas Glass<sup>125</sup>, Cheng Qian<sup>126</sup>, Justin Romberg<sup>127</sup>, Rakshith Sharma<sup>126</sup>, Jeffrey Spaeder<sup>128</sup>, Jimeng Sun<sup>129</sup>, Cao Xiao<sup>130</sup>, Lei Gao<sup>131</sup>, Zhiling Gu<sup>132</sup>, Myungjin Kim<sup>132</sup>, Xinyi Li<sup>133</sup>, Yueying Wang<sup>134</sup>, Guannan Wang<sup>135</sup>, Lily Wang<sup>132</sup>, Shan Yu<sup>136</sup>, Chaman Jain<sup>137</sup>, Sangeeta Bhatia<sup>138</sup>, Pierre Nouvellet<sup>139,140</sup>, Ryan Barber<sup>141</sup>, Emmanuela Gaikedu<sup>141</sup>, Simon Hay<sup>141</sup>, Steve Lim<sup>141</sup>, Chris Murray<sup>141</sup>, David Pigott<sup>141</sup>, Robert C. Reiner<sup>141</sup>, Prasith Baccam<sup>142</sup>, Heidi L. Gurung<sup>142</sup>, Steven A. Stage<sup>143</sup>, Bradley T. Suchoski<sup>142</sup>, Chung-Yan Fong<sup>144</sup>, Dit-Yan Yeung<sup>144</sup>, Bijaya Adhikari<sup>145</sup>, Jiaming Cui<sup>146</sup>, B. Aditya Prakash<sup>146</sup>, Alexander Rodríguez<sup>146</sup>, Anika Tabassum<sup>147,148</sup>, Jiajia Xie<sup>146</sup>, John Asplund<sup>149</sup>, Arden Baxter<sup>150</sup>, Pinar Keskinocak<sup>150</sup>, Buse Eylul Oruc<sup>150</sup>, Nicoleta Serban<sup>150</sup>, Sercan O. Arik<sup>151</sup>, Mike Dusenberry<sup>151</sup>, Arkady Epshteyn<sup>151</sup>, Elli Kanal<sup>151</sup>, Long T. Le<sup>151</sup>, Chun-Liang Li<sup>151</sup>, Tomas Pfister<sup>151</sup>, Rajarishi Sinha<sup>151</sup>, Thomas Tsai<sup>152</sup>, Nate Yoder<sup>151</sup>, Jinsung Yoon<sup>151</sup>, Leyou Zhang<sup>151</sup>, Daniel Wilson<sup>153</sup>, Artur A. Belov<sup>154</sup>, Carson C. Chow<sup>155</sup>, Richard C. Gerkin<sup>156</sup>, Osman N. Yogurtcu<sup>154</sup>, Mark Ibrahim<sup>157</sup>, Timothee Lacroix<sup>158</sup>, Matthew Le<sup>157</sup>, Jason Liao<sup>159</sup>, Maximilian Nickel<sup>157</sup>, Levent Sagun<sup>158</sup>, Sam Abbott<sup>160</sup>, Nikos I. Bosse<sup>160</sup>, Sebastian Funk<sup>160</sup>, Joel Hellewell<sup>161</sup>, Sophie R. Meakin<sup>160</sup>, Katharine Sherratt<sup>160</sup>, Rahi Kalantari<sup>162</sup>, Mingyuan Zhou<sup>163</sup>, Morteza Karimzadeh<sup>164</sup>, Benjamin Lucas<sup>165</sup>, Thoai Ngo<sup>166</sup>, Hamidreza Zoraghein<sup>166</sup>, Behzad Vahedi<sup>165</sup>, Zhongying Wang<sup>165</sup>, Sen Pei<sup>167</sup>, Jeffrey Shaman<sup>167</sup>, Teresa K. Yamana<sup>167</sup>, Dimitris Bertsimas<sup>85</sup>, Michael L. Li<sup>84</sup>, Saksham Soni<sup>84</sup>, Hamza Tazi Bouardi<sup>84</sup>, Madeline Adey<sup>168</sup>, Turgay Ayer<sup>169,170</sup>, Jagpreet Chhatwal<sup>168,171</sup>, Ozden O. Dalgic<sup>172</sup>, Mary A. Ladd<sup>168</sup>, Benjamin P. Linares<sup>173</sup>, Peter Mueller<sup>168</sup>, Jade Xiao<sup>170</sup>, Jurgen Bosch<sup>174,175</sup>, Austin Wilson<sup>175</sup>, Peter Zimmerman<sup>175</sup>, Qinxia Wang<sup>176</sup>, Yuanjia Wang<sup>176</sup>, Shanghong Xie<sup>176</sup>, Donglin Zeng<sup>177</sup>, Jacob Bien<sup>178</sup>, Logan Brooks<sup>179</sup>, Alden Green<sup>179</sup>, Addison J. Hu<sup>179</sup>, Maria Jahja<sup>179</sup>, Daniel McDonald<sup>180</sup>, Balasubramanian Narasimhan<sup>181</sup>, Collin Politsch<sup>182</sup>, Samyak Rajanala<sup>183</sup>, Aaron Rumack<sup>182</sup>, Noah Simon<sup>184</sup>, Ryan J. Tibshirani<sup>179</sup>, Rob Tibshirani<sup>183</sup>, Valerie Ventura<sup>179</sup>, Larry Wasserman<sup>179</sup>, John M. Drake<sup>185</sup>, Eamon B. O'Dea<sup>185</sup>, Yaser Abu-Mostafa<sup>186</sup>, Rahil Bathwal<sup>186</sup>, Nicholas A. Chang<sup>186</sup>, Pavan Chitta<sup>187</sup>, Anne Erickson<sup>186</sup>, Sumit Goel<sup>186</sup>, Jethin Gowda<sup>188</sup>, Qixuan Jin<sup>186</sup>, HyeongChan Jo<sup>186</sup>, Juhyun Kim<sup>186</sup>, Pranav Kulkarni<sup>186</sup>, Samuel M. Lushtak<sup>186</sup>, Ethan Mann<sup>186</sup>, Max Popken<sup>186</sup>, Connor Soohoo<sup>189</sup>, Kushal Tirumala<sup>186</sup>, Albert Tseng<sup>186</sup>, Vignesh Varadarajan<sup>186</sup>, Jagath Vytheeswaran<sup>186</sup>, Christopher Wang<sup>186</sup>, Akshay Yeluri<sup>190</sup>, Dominic Yurk<sup>186</sup>, Michael Zhang<sup>186</sup>, Alexander Zlokapa<sup>191</sup>, Robert Pagano<sup>192</sup>, Chandini Jain<sup>193</sup>, Vishal Tomar<sup>194</sup>, Lam Ho<sup>195</sup>, Huong Huynh<sup>196,197</sup>, Quoc Tran<sup>196,198</sup>, Velma K. Lopez<sup>199</sup>, Jo W. Walker<sup>199</sup>, Rachel B. Slayton<sup>199</sup>, Michael A. Johansson<sup>199</sup>, Matthew Biggerstaff<sup>199</sup> & Nicholas G. Reich<sup>1</sup>

<sup>6</sup>Institute of Stochastics, Karlsruhe Institute of Technology, Karlsruhe, Germany. <sup>7</sup>Institute of Mathematical Statistics and Actuarial Science, University of Bern, 3012, Bern, Switzerland. <sup>8</sup>Unaffiliated, New York, NY, 10016, USA. <sup>9</sup>Walmart, Sunnyvale, CA, 94086, USA. <sup>10</sup>Wadhvani Institute of Artificial Intelligence, Mumbai, Maharashtra, 400093, India. <sup>11</sup>Biocomplexity Institute, University of Virginia, Charlottesville, Virginia, 22904-4298, USA. <sup>12</sup>Department of Computer Science, University of Virginia, Charlottesville, Virginia, 22904-4298, USA. <sup>13</sup>Discreet Labs, Raleigh, North Carolina, USA. <sup>14</sup>Boston Children's Hospital, Boston, Massachusetts, 02115, USA. <sup>15</sup>Harvard Medical School, Boston, Massachusetts, USA. <sup>16</sup>Texas Advanced Computing Center, Austin, Texas, 78758, USA. <sup>17</sup>Department of Integrative Biology, University of Texas at Austin, Austin, TX, 78712, USA. <sup>18</sup>Santa Fe Institute, Santa Fe, NM, 87501, USA. <sup>19</sup>Department of Information, Risk, and Operations Management, University of Texas at Austin, Austin, TX, 78712, USA. <sup>20</sup>Department of Statistics and Data Sciences, University of Texas at Austin, Austin, TX, 78712, USA. <sup>21</sup>Ming Hsieh Department of Electrical and Computer Engineering, University of Southern California, Los Angeles, California, 90089, USA. <sup>22</sup>Department of Computer Science, University of Southern California, Los Angeles, California, 90089, USA.

Angeles, California, 90089, USA. <sup>23</sup>US Army Engineer Research and Development Center, Concord, MA, 01742, USA. <sup>24</sup>US Army Engineer Research and Development Center, Vicksburg, MS, 39180, USA. <sup>25</sup>US Army Engineer Research and Development Center, Hanover, NH, 03755, USA. <sup>26</sup>School of Medicine, State University of New York Upstate Medical University, Syracuse, NY, 13210, USA. <sup>27</sup>Department of Psychiatry and Behavioral Sciences, State University of New York Upstate Medical University, Syracuse, NY, 13210, USA. <sup>28</sup>Department of Public Health & Preventive Medicine, State University of New York Upstate Medical University, Syracuse, NY, 13210, USA. <sup>29</sup>Department of Electrical Engineering and Computer Science, Syracuse University, Syracuse, NY, 13210, USA. <sup>30</sup>Department of Physics, Trinity University, San Antonio, TX, 78212, USA. <sup>31</sup>Department of Physics, University of Michigan - Ann Arbor, Ann Arbor, MI, 48109, USA. <sup>32</sup>Departments of Epidemiology, Complex Systems, and Mathematics, University of Michigan - Ann Arbor, Ann Arbor, MI, 48109, USA. <sup>33</sup>School of Public Health, University of Michigan - Ann Arbor, Ann Arbor, MI, 48109, USA. <sup>34</sup>School of Public Health and Health Sciences, University of Massachusetts Amherst, Amherst, MA, 01003, USA. <sup>35</sup>College of Information and Computer Sciences, University of Massachusetts Amherst, Amherst, MA, 01003, USA. <sup>36</sup>Department of Statistics, University of Washington, Seattle, WA, 98195, USA. <sup>37</sup>Halcioğlu Data Science Institute, University of California, San Diego, San Diego, CA, 92093, USA. <sup>38</sup>Mechatronics, Embedded Systems and Automation Lab, Department of Mechanical Engineering, University of California Merced, Merced, CA, 95301, USA. <sup>39</sup>Northeastern University, Boston, MA, 02115, USA. <sup>40</sup>Department of Computer Science and Engineering, University of California, San Diego, San Diego, CA, 93106, USA. <sup>41</sup>Department of Computer Science, University of California at Santa Barbara, Santa Barbara, CA, 92093, USA. <sup>42</sup>Jilin University, Changchun City, Jilin Province, PR China. <sup>43</sup>University of Science and Technology of China, Hefei, Anhui, China. <sup>44</sup>Department of Computer Science, University of California, Los Angeles, CA, USA. <sup>45</sup>Department of Medicine, University of Chicago, Chicago, IL, 60637, USA. <sup>46</sup>University of Nebraska Omaha, Omaha, NE, 68182, USA. <sup>47</sup>National Cancer Institute (NCI), NIH, Rockville, MD, 20850, USA. <sup>48</sup>Department of Statistics and Data Science, University of Central Florida, Orlando, FL, 32816, USA. <sup>49</sup>Department of Computer Science, University of Central Florida, Orlando, FL, 32816, USA. <sup>50</sup>Department of Mathematics, University of Arizona, Tucson, AZ, 85721, USA. <sup>51</sup>Department of Mechanical Engineering, Texas Tech University, Lubbock, Texas, 79409, USA. <sup>52</sup>Construx Software, Bellevue, WA, 98004, USA. <sup>53</sup>Construx, Bellevue, WA, 98004, USA. <sup>54</sup>Quality Assurance and Data Science, Signature Science, LLC, Charlottesville, Virginia, 22911, USA. <sup>55</sup>Quality Assurance and Data Science, Signature Science, LLC, Austin, Texas, 78759, USA. <sup>56</sup>Swiss Data Science Center, EPFL & ETHZ, 1015, Lausanne, Switzerland. <sup>57</sup>Institute of Global Health, Faculty of Medicine, University of Geneva, 1202, Geneva, Switzerland. <sup>58</sup>Center for Intelligent Systems, EPFL, 1015, Lausanne, Switzerland. <sup>59</sup>Department of Civil and Environmental Engineering, University of Washington, Seattle, WA, 98195, USA. <sup>60</sup>Department of Materials Science and Engineering, Rensselaer Polytechnic Institute, Troy, NY, 12309, USA. <sup>61</sup>Unaffiliated, Davis, California, 95616, USA. <sup>62</sup>Brown University, Providence, RI, 02912, USA. <sup>63</sup>School for Engineering of Matter, Transport and Energy, Arizona State University, Tempe, Arizona, 85287, USA. <sup>64</sup>School of Engineering, Brown University, Providence, RI, 02912, USA. <sup>65</sup>Infectious Disease Group, Predictive Science, Inc, San Diego, California, 92116, USA. <sup>66</sup>Department of Infectious Disease Epidemiology, Imperial College, London, Westminster, London, W2 1PG, UK. <sup>67</sup>University of Dallas, Irving, TX, 75062, USA. <sup>68</sup>Unaffiliated, Seattle, WA, USA. <sup>69</sup>Oliver Wyman Digital, Oliver Wyman, Boston, MA, 02110, USA. <sup>70</sup>Oliver Wyman Digital, Oliver Wyman, Sao Paulo, 04711-904, Brazil. <sup>71</sup>Health & Life Sciences, Oliver Wyman, Boston, MA, 2110, USA. <sup>72</sup>Financial Services, Oliver Wyman, New York, NY, 10036, USA. <sup>73</sup>Oliver Wyman Digital, Oliver Wyman, New York, NY, 10036, USA. <sup>74</sup>Health & Life Sciences, Oliver Wyman, New York, NY, 10036, USA. <sup>75</sup>Core Consultant Group, Oliver Wyman, New York, NY, 10036, USA. <sup>76</sup>Financial Services, Oliver Wyman, Toronto, ON, M5J 0A1, Canada. <sup>77</sup>Financial Services, Oliver Wyman, Marylebone, London, W1U 8EW, UK. <sup>78</sup>Department of Biological Sciences, University of Notre Dame, Notre Dame, IN, 46556, USA. <sup>79</sup>Department of Industrial and Systems Engineering, North Carolina State University, Raleigh, NC, 27695, USA. <sup>80</sup>Department of Mathematics and Statistics, Masaryk University, Brno, 61137, Czech Republic. <sup>81</sup>Microsoft, Redmond, WA, 98029, USA. <sup>82</sup>Laboratory for the Modeling of Biological and Socio-technical Systems, Northeastern University, Boston, MA, USA. <sup>83</sup>ISI Foundation, Turin, Italy. <sup>84</sup>Operations Research Center, Massachusetts Institute of Technology, Cambridge, MA, 02139, USA. <sup>85</sup>Sloan School of Management, Massachusetts Institute of Technology, Cambridge, MA, 02142, USA. <sup>86</sup>Leonard N Stern School of Business, New York University, NY, USA. <sup>87</sup>Institute for Data, Systems, and Society, Massachusetts Institute of Technology, Cambridge, MA, 02139, USA. <sup>88</sup>Laboratory for Computational Physiology, Massachusetts Institute of Technology, Cambridge, MA, 02139, USA. <sup>89</sup>River Hill High School, Clarksville, MD, USA. <sup>90</sup>Department of Computer Science and Engineering, Lehigh University, Bethlehem, PA, 18015, USA. <sup>91</sup>Department of Industrial and Systems Engineering, Lehigh University, Bethlehem, PA, 18015, USA. <sup>92</sup>College of Health, Lehigh University, Bethlehem, PA, 18015, USA. <sup>93</sup>Department of Mathematics and Statistics, Northern Arizona University, Flagstaff, AZ, 86011, USA. <sup>94</sup>Theoretical Division, Los Alamos National Laboratory, Los Alamos, NM, 87545, USA. <sup>95</sup>Information Sciences Group, Los Alamos National Laboratory, Los Alamos, NM, 87545, USA. <sup>96</sup>Theoretical Biology and Biophysics Group (T-6), Theoretical Division, Los Alamos National Laboratory, Los Alamos, NM, 87545, USA. <sup>97</sup>Department of Biological Sciences, Northern Arizona University, Flagstaff, AZ, 86011, USA. <sup>98</sup>Department of Chemistry and chemical biology, Cornell University, Ithaca, NY, 14850, USA. <sup>99</sup>Life Sciences, JMP, LLC, Cary, NC, 27513, USA. <sup>100</sup>Information Systems and Modeling Group, Los Alamos National Laboratory, Los Alamos, NM, 87545, USA. <sup>101</sup>Statistical Sciences Group, Los Alamos National Laboratory, Los Alamos, NM, 87545, USA. <sup>102</sup>Chair of Econometrics and Statistics, Karlsruhe Institute of Technology, Karlsruhe, Germany. <sup>103</sup>TRIUMF, Vancouver, BC, V6T 2A3, Canada. <sup>104</sup>Department of Physics and Astronomy, University of Victoria, Victoria, BC, V8W 2Y2, Canada. <sup>105</sup>Johns Hopkins University Applied Physics Lab, Laurel, MD, 20723, USA. <sup>106</sup>Google Research, Mountainview, CA, 94043, USA. <sup>107</sup>School of Engineering and Applied Sciences, Harvard University, Cambridge, MA, 02134, US. <sup>108</sup>Department of Epidemiology, UNC Gillings School of Public Health, University of North Carolina at Chapel Hill, Chapel Hill, NC, 27599, USA. <sup>109</sup>Department of Epidemiology, Harvard TH Chan School of Public Health, Boston, MA, 02115, USA. <sup>110</sup>Department of Epidemiology, Johns Hopkins Bloomberg School of Public Health, Baltimore, MD, 21205, USA. <sup>111</sup>Institute for Computational Medicine, Johns Hopkins University, Baltimore, MD, 21218, USA. <sup>112</sup>Unaffiliated, Baltimore, MD, 21205, USA.

<sup>113</sup>Division of Epidemiology, Department of Internal Medicine, University of Utah, Salt Lake City, UT, 84108, USA. <sup>114</sup>Laboratory of Ecohydrology, School of Architecture, Civil and Environmental Engineering, École Polytechnique Fédérale de Lausanne, Lausanne, 1015, Switzerland. <sup>115</sup>Department of Epidemiology, Gillings School of Global Public Health and The Carolina Population Center, University of North Carolina at Chapel Hill, Chapel Hill, NC, 27599, US. <sup>116</sup>The Carolina Population Center, University of North Carolina at Chapel Hill, Chapel Hill, NC, 27599, USA. <sup>117</sup>Unaffiliated, San Francisco, CA, 94107, USA. <sup>118</sup>International Vaccine Access Center, Department of International Health, Department of Epidemiology, Johns Hopkins Bloomberg School of Public Health, Baltimore, MD, 21231, USA. <sup>119</sup>Unaffiliated, San Francisco, CA, 94122, USA. <sup>120</sup>Department of Civil and Systems Engineering, Johns Hopkins University, Baltimore, MD, 21218-2682, USA. <sup>121</sup>Unaffiliated, Amsterdam, Netherlands. <sup>122</sup>Unaffiliated, Vienna, 1010, Austria. <sup>123</sup>Indiana University–Purdue University Indianapolis, Indianapolis, IN, 46202, USA. <sup>124</sup>University of Illinois at Urbana-Champaign, Champaign, IL, USA. <sup>125</sup>Analytics Center of Excellence, IQVIA, Plymouth Meeting, Pennsylvania, PA, USA. <sup>126</sup>Analytics Center of Excellence, IQVIA, Cambridge, MA, USA. <sup>127</sup>Georgia Institute of Technology, Atlanta, GA, USA. <sup>128</sup>IQVIA, Evanston, IL, USA. <sup>129</sup>University of Illinois at Urbana-Champaign, Champaign, IL, USA. <sup>130</sup>Amplitude, San Francisco, CA, USA. <sup>131</sup>Department of Finance, Iowa State University, Ames, IA, 50011-1090, USA. <sup>132</sup>Department of Statistics, Iowa State University, Ames, IA, 50011-1090, USA. <sup>133</sup>School of mathematical and statistical sciences, Clemson University, Clemson, SC, 29634, USA. <sup>134</sup>Iowa State University, Ames, IA, 50011-1091, USA. <sup>135</sup>Department of mathematics, College of William & Mary, Williamsburg, VA, 23187, USA. <sup>136</sup>Department of Statistics, University of Virginia, Charlottesville, VA, 22904, USA. <sup>137</sup>Institute of Business Forecasting (IBF), Great Neck, NY, 11021, USA. <sup>138</sup>Imperial College London, London, UK. <sup>139</sup>Imperial College London, Brighton, UK. <sup>140</sup>University of Sussex, Falmer, Brighton, BN1 9RH, UK. <sup>141</sup>Institute for Health Metrics and Evaluation, University of Washington, Seattle, WA, 98121, USA. <sup>142</sup>Emerging Technologies, IEM, Inc, Bel Air, MD, 21015, USA. <sup>143</sup>Emerging Technologies, IEM, Inc, Baton Rouge, LA, 70809, USA. <sup>144</sup>The Hong Kong University of Science and Technology, Clear Water Bay, Hong Kong. <sup>145</sup>Department of Computer Science, University of Iowa, Iowa City, IA, 52242, USA. <sup>146</sup>College of Computing, Georgia Institute of Technology, Atlanta, GA, 30308, USA. <sup>147</sup>Georgia Institute of Technology, Atlanta, GA, 30308, USA. <sup>148</sup>Department of Computer Science, Virginia Tech, Falls Church, VA, 22043, USA. <sup>149</sup>Advanced Data Analytics, Metron, Inc, Reston, VA, 20190, USA. <sup>150</sup>School of Industrial and Systems Engineering, Georgia Institute of Technology, Atlanta, GA, 30318, USA. <sup>151</sup>Google Cloud, Sunnyvale, CA, 94089, USA. <sup>152</sup>Harvard University, Cambridge, MA, 02138, USA. <sup>153</sup>Economic Research Department, Federal Reserve Bank of San Francisco, San Francisco, CA, 94105, USA. <sup>154</sup>Office of Biostatistics and Epidemiology, Center for Biologics Evaluation and Research, Food and Drug Administration, Center for Biologics Evaluation and Research, Silver Spring, MD, 20993, USA. <sup>155</sup>Mathematical Biology Section, NIDDK/LBM, NIH, Bethesda, MD, 20892, USA. <sup>156</sup>School of Life Sciences, Arizona State University, Tempe, AZ, 85287, USA. <sup>157</sup>Meta AI, New York, NY, USA. <sup>158</sup>Meta AI, Paris, France. <sup>159</sup>Meta, Menlo Park, CA, USA. <sup>160</sup>Centre for Mathematical Modelling of Infectious Diseases, London School of Hygiene & Tropical Medicine, London, UK. <sup>161</sup>London School of Hygiene & Tropical Medicine, London, UK. <sup>162</sup>Department of Electrical and Computer Engineering, The University of Texas at Austin, Austin, TX, 78712, USA. <sup>163</sup>McCombs School of Business, The University of Texas at Austin, Austin, TX, 78712, USA. <sup>164</sup>Department of Geography, Institute of Behavioral Science, University of Colorado Boulder, Boulder, CO, 80309, USA. <sup>165</sup>Department of Geography, University of Colorado Boulder, Boulder, CO, 80309, USA. <sup>166</sup>Social and Behavioral Science Research, Population Council, New York, NY, 10017, USA. <sup>167</sup>Department of Environmental Health Sciences, Columbia University, New York, NY, 10032, USA. <sup>168</sup>Radiology - Institute for Technology Assessment, Massachusetts General Hospital, Boston, MA, 02114, USA. <sup>169</sup>Emory University Medical School, Atlanta, GA, 30322, USA. <sup>170</sup>H. Milton Stewart School of Industrial and Systems Engineering, Georgia Institute of Technology, Atlanta, GA, 30332, USA. <sup>171</sup>Harvard Medical School, Boston, MA, 02114, USA. <sup>172</sup>Health Economic Modeling, Value Analytics Labs, Boston, MA, 02114, USA. <sup>173</sup>Department of Medicine, Section of Infectious Diseases, Boston University School of Medicine, Boston, MA, 02118, USA. <sup>174</sup>InterRayBio, LLC, Cleveland, Ohio, 44106, USA. <sup>175</sup>Center for Global Health & Diseases, Case Western Reserve University, Cleveland, OH, 44106-4983, USA. <sup>176</sup>Department of Biostatistics, Columbia University, New York, NY, 10032, USA. <sup>177</sup>Department of Biostatistics, UNC Chapel Hill, Chapel Hill, NC, 27599, USA. <sup>178</sup>Marshall School of Business, Department of Data Sciences and Operations (DSO), University of Southern California, Los Angeles, CA, 90089, USA. <sup>179</sup>Department of Statistics, Carnegie Mellon University, Pittsburgh, PA, 15213, USA. <sup>180</sup>Department of Statistics, University of British Columbia, Vancouver, BC, V6T 1Z4, Canada. <sup>181</sup>Department of Biomedical Data Sciences and Department of Statistics, Stanford University, Stanford, CA, 94305-4020, USA. <sup>182</sup>Machine Learning Department, Carnegie Mellon University, Pittsburgh, PA, 15213, USA. <sup>183</sup>Department of Statistics, Stanford University, Stanford, CA, 94305-4020, USA. <sup>184</sup>Department of Biostatistics, University of Washington, Seattle, WA, 98195, USA. <sup>185</sup>Center for the Ecology of Infectious Diseases, University of Georgia, Athens, GA, 30602, USA. <sup>186</sup>California Institute of Technology, Pasadena, CA, 91125, USA. <sup>187</sup>California Institute of Technology, Mountain View, CA, 94043, USA. <sup>188</sup>California Institute of Technology, Chicago, IL, 60606, USA. <sup>189</sup>California Institute of Technology, Redwood City, CA, 94065, USA. <sup>190</sup>California Institute of Technology, Edison, NJ, 08820, USA. <sup>191</sup>Center for Theoretical Physics, California Institute of Technology, Cambridge, MA, 02139, USA. <sup>192</sup>Unaffiliated, Tucson, AZ, 85710, USA. <sup>193</sup>Auquan, London, EC2A 4DP, UK. <sup>194</sup>Auquan, Bengaluru, KA, India. <sup>195</sup>Department of Mathematics and Statistics, Dalhousie University, Halifax, Nova Scotia, B3H 4R2, Canada. <sup>196</sup>Alpert, San Carlos, CA, 94070, USA. <sup>197</sup>Virtual Power System, Milpitas, CA, 95035, USA. <sup>198</sup>Walmart Inc, Sunnyvale, CA, 94085, USA. <sup>199</sup>Centers for Disease Control and Prevention, Atlanta, GA, USA.