

Journal Pre-proof

Comprehensive biomarker analysis of long-term response to trastuzumab in patients with HER2-positive advanced gastric or gastroesophageal adenocarcinoma

Isabel Porth, Daniela Hirsch, Yonca Ceribas, Philip Weidner, Wilko Weichert, Thorsten Oliver Götze, Sven Perner, Kim Luley, Christian Moritz Heyer, Carolina de la Torre, Ralf-Dieter Hofheinz, Sylvie Lorenzen, Timo Gaiser



PII: S0959-8049(23)00046-1

DOI: <https://doi.org/10.1016/j.ejca.2023.01.022>

Reference: EJC 12800

To appear in: *European Journal of Cancer*

Received Date: 20 December 2022

Revised Date: 23 January 2023

Accepted Date: 25 January 2023

Please cite this article as: Porth I, Hirsch D, Ceribas Y, Weidner P, Weichert W, Götze TO, Perner S, Luley K, Heyer CM, Torre Cdl, Hofheinz R-D, Lorenzen S, Gaiser T, Comprehensive biomarker analysis of long-term response to trastuzumab in patients with HER2-positive advanced gastric or gastroesophageal adenocarcinoma, *European Journal of Cancer*, <https://doi.org/10.1016/j.ejca.2023.01.022>.

This is a PDF file of an article that has undergone enhancements after acceptance, such as the addition of a cover page and metadata, and formatting for readability, but it is not yet the definitive version of record. This version will undergo additional copyediting, typesetting and review before it is published in its final form, but we are providing this version to give early visibility of the article. Please note that, during the production process, errors may be discovered which could affect the content, and all legal disclaimers that apply to the journal pertain.

© 2023 University Medical Center Mannheim, University of Heidelberg. Published by Elsevier Ltd.

Isabel Porth: Investigation, Visualization, Writing - Original Draft, Software. **Daniela Hirsch:** Investigation, Writing - Review & Editing. **Yonca Ceribas:** Investigation. **Philip Weidner:** Resources. **Wilko Weichert:** Resources. **Thorsten Oliver Götze:** Resources. **Sven Perner:** Resources. **Kim Luley:** Resources. **Christian Moritz Heyer:** Software. **Carolina de la Torre:** Investigation, Data Curation. **Ralf-Dieter Hofheinz:** Resources, Writing - Review & Editing. **Sylvie Lorenzen:** Resources, Writing - Review & Editing. **Timo Gaiser:** Conceptualization, Writing - Original Draft, Supervision.

Journal Pre-proof

Comprehensive biomarker analysis of long-term response to trastuzumab in patients with HER2-positive advanced gastric or gastroesophageal adenocarcinoma

Authors

Isabel Porth^{1*}, Daniela Hirsch¹, Yonca Ceribas¹, Philip Weidner², Wilko Weichert³, Thorsten Oliver Götze⁴, Sven Perner⁵, Kim Luley⁶, Christian Moritz Heyer⁷, Carolina de la Torre⁸, Ralf-Dieter Hofheinz⁹, Sylvie Lorenzen¹⁰, Timo Gaiser^{1,11}

Affiliations

1 Institute of Pathology, University Medical Center Mannheim, University of Heidelberg, 68167 Mannheim, Germany

2 Department of Medicine II, Medical Faculty Mannheim, Heidelberg University, 68167 Mannheim, Germany

3 Institute of Pathology, School of Medicine, Technical University of Munich, Klinikum rechts der Isar, 81675 Munich, Germany; German Cancer Consortium (DKTK), Partner Site Munich; Bavarian Cancer Center (BZKF)

4 Institute of Clinical Cancer Research, Krankenhaus Nordwest, UCT-University Cancer Center, Frankfurt, Germany; IKF Klinische Krebsforschung GmbH am Krankenhaus Nordwest, 60488 Frankfurt, Germany

5 Institute of Pathology, University of Luebeck and University Hospital Schleswig-Holstein Campus Luebeck, 23538 Luebeck, Germany; Pathology, Research Center Borstel, Leibniz Lung Center, Borstel, Germany

6 Clinic for Hematology and Oncology, University Hospital Schleswig-Holstein-Campus Luebeck, 23538 Luebeck, Germany

7 Biomedical Informatics, Data Mining and Data Analytics, Augsburg University, 86159 Augsburg, Germany; Faculty of Biosciences, Heidelberg University, 69120 Heidelberg, Germany.

8 NGS Core Facility, Medical Faculty Mannheim, University of Heidelberg, 68167 Mannheim, Germany.

9 Interdisciplinary Tumor Center Mannheim, University Hospital Mannheim, University Heidelberg, 68167 Mannheim, Germany

10 Medical Clinic III, Klinikum rechts der Isar, Technical University of Munich, 81675 Munich, Germany

11 Institute of Applied Pathology, 67346 Speyer, Germany

*Correspondence: Isabel Porth, Institute of Pathology, University Medical Center Mannheim, University of Heidelberg, Theodor-Kutzer-Ufer 1-3, 68167 Mannheim Germany, isabel.porth@medma.uni-heidelberg.de, +49621-383-6649

Abstract

Background: A subgroup of patients with HER2-positive metastatic gastric and gastroesophageal junction cancers shows long-term response under trastuzumab maintenance monotherapy. Obviously, HER2 status alone is not able to identify these patients. We performed this study to identify potential new prognostic biomarkers for this long-term responding patient group.

Patients and methods: Tumor samples of 19 patients with HER2-positive metastatic gastric and gastroesophageal junction cancer who underwent trastuzumab treatment were retrospectively collected from multiple centers. Patients were divided into long-term responding (n=7) or short-term responding group (n=12) according to progression-free survival (PFS \geq 12 months vs. PFS<12 months). Next generation sequencing and microarray-based gene expression analysis were performed along with HER2 and PD-L1 immunohistochemistry.

Results: Long-term responding patients had significantly higher PD-L1 combined positive scores (CPS) and CPS correlated with longer progression-free survival. PD-L1 positivity (CPS \geq 1) was further associated with an increased CD4+ memory T-cell score. The *ERBB2* copy number as well as the tumor mutational burden could not discriminate between short-term and long-term responding patients. Genetic alterations and co-amplifications in HER2 pathway associated genes such as *EGFR*, which were connected to trastuzumab resistance, were present in 10% of the patients and equally distributed between the groups.

Conclusion: The study highlights the clinical relevance of PD-L1 testing also in the context of trastuzumab treatment and offers a biological rationale by demonstrating elevated CD4+ memory T-cells scores in the PD-L1-positive group.

Keywords

HER2, PD-L1, prognostic factor, gastric cancer, trastuzumab

Introduction

Gastric cancer (GC) is the fifth most common cancer with the fourth-highest mortality worldwide [1]. Between 12% and 30% of metastatic gastric and gastroesophageal junction cancers (mGC/mGEJC) show overexpression of the human epidermal growth factor receptor 2 (HER2) caused by *ERBB2* amplification [2].

In 2010, the ToGA study demonstrated that the addition of trastuzumab, a humanized monoclonal HER2-targeting antibody, to chemotherapy significantly improved the survival of patients with HER2-positive mGC/mGEJC in comparison to chemotherapy alone [3]. Even though this was a tremendous success, the overall survival remained poor with a median of 13.8 months [3,4]. However, several case reports and few smaller studies have reported that a subgroup of HER2-positive mGC/mGEJC patients showed prolonged survival for several years under maintenance therapy with trastuzumab alone [5-8]. To date, a biomarker that reliably identifies this long-term responder to trastuzumab treatment remains elusive.

A high level of HER2 gene amplification was proposed as improved predictor of sensitivity to trastuzumab treatment, but the studies defined different thresholds [9-12]. Furthermore, a tumor mutational burden (TMB) of more than 10 mutations per Mb was indicated to be a potential biomarker for trastuzumab efficacy [13]. Moreover, initial resistance to trastuzumab or impaired treatment response was associated with the presence of co-amplifications and mutations of oncogenes or genes related to the HER2 signaling pathway such as *EGFR* and *KRAS* [10,14,15]. In addition, intratumoral heterogeneity of HER2 protein expression, frequently found in GC and GEJC, was associated with poor prognosis [16-18].

In 2021, immunotherapy offered new treatment options for mGC/mGEJC patients and the combination of nivolumab/pembrolizumab and chemotherapy was approved as first-line therapy for programmed cell death ligand 1 (PD-L1) expressing tumors. Since then, PD-L1 expression is routinely assessed in clinical diagnostics in addition to the HER2 status [4,19-20]. Recent studies like the KEYNOTE-811 explored the efficacy of anti-PD-L1 treatment in HER2-positive mGC/mGEJC showing that the combination of pembrolizumab and trastuzumab with chemotherapy leads to improved response rates compared to treatment with chemotherapy and trastuzumab alone [21]. In addition, the combined expression of PD-L1 and HER2 was found to be a positive prognostic factor for survival in GC [22]. Findings from a preliminary biomarker analysis of the DESTINY-Gastric03 trial, showed a large overlap between HER2 and PD-L1 expression in 85% of the patients GC or GEJC [23]. In the KEYNOTE-811 study similar frequencies for double positivity (HER2+/PD-L1+) have been reported [21].

In this retrospective study, we divided HER2-positive mGC/mGEJC patients into two groups based on progression-free survival (PFS) under trastuzumab-based treatment and performed an explorative analysis of biomarkers. We applied targeted next generation sequencing (NGS) using a 409 gene panel, Affymetrix gene expression analysis and immunohistochemistry to evaluate biomarkers and investigated their prognostic impact in this cohort.

Material and methods

Patients

In this retrospective study, formalin-fixed paraffin-embedded (FFPE) tumor samples from locally tested HER2-positive advanced and/or metastatic adenocarcinoma of the stomach or gastro-esophageal junction prior to trastuzumab therapy were collected. Diagnoses were

established between 2010 and 2021. Patients with available survival and therapy information as well as available tumor tissue were included (Figure 1). All patients received a platinum and 5-FU based chemotherapy in combination with trastuzumab (Supplementary table 1). Tumor FFPE samples were received from the archives of the Institutes of Pathology of the University Medical Center Mannheim, Nord-West Krankenhaus Frankfurt, Technical University Munich and University of Luebeck. Tumor-adjacent normal tissue and five healthy gastric mucosa samples were collected from the archive of the Institute of Pathology of the University Medical Center Mannheim. Samples were reviewed histologically and tumor areas were marked by two board certified pathologists (TG, DH). This study was approved by the local ethics committee of the Medical Faculty Mannheim of Heidelberg University (2016-080R-MA).

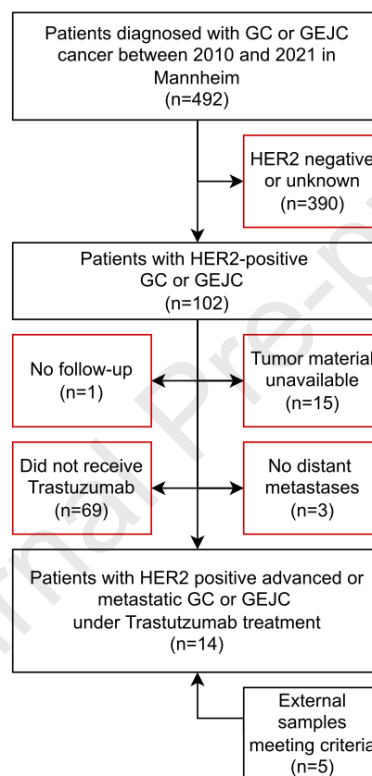


Figure 1 Flowchart of the selection process of the retrospective study cohort. Criteria for exclusion are shown in red. FFPE, Formalin-fixed paraffin-embedded; HER2, human epidermal growth factor receptor 2; gastric and gastroesophageal junction cancers, GC/GEJC

Grouping

Patients were separated into two groups according to PFS under trastuzumab-containing therapy. The first group includes patients with PFS longer or equal to 12 months. Patients with short-term response (PFS<12 months) are in the second group.

Immunohistochemistry and *in-situ* hybridization

FFPE tissue sections with 2-3 μm thickness were used for all immunohistochemistry (IHC), silver and fluorescence *in-situ* hybridization (SISH/FISH) experiments.

PD-L1 IHC was performed on a VENTANA BenchMark ULTRA autostainer utilizing OptiView DAB Detection kit (Roche Diagnostics GmbH, Mannheim, Germany), and Biocare PD-L1 antibody (clone CAL10, 1:50, ACI 3171 C, Biocare Medical, Den Haag, Netherlands). Testing was done alongside with a tonsil section as on-slide positive control. PD-L1 stained slides were interpreted according to combined tumor and immune cell score (combined positive score, CPS) by two board-certified pathologists (T.G.; D.H.) who received appropriate training.

HER2

The HER2 status of all samples was centrally re-evaluated. HER2 IHC was carried out with primary HER2 antibody (polyclonal, 1:500, A0485, Dako/Agilent). For heat-induced antigen retrieval, the sections were immersed in pre-heated Epitope Retrieval Solution, pH 6 (1:10, RE7113, Leica Biosystems, UK) and incubated at 95°C in a water bath for 40 min. For detection, the EnVision Detection System, Peroxidase/DAB, Rabbit/Mouse (Agilent, Santa Clara, CA, USA) was used. The HER2 status was evaluated according to CAP guidelines [24]. In cases with equivocal HER2 status (2+), either SISH or FISH was used to detect chromosomal amplification of HER2. For SISH, the VENTANA HER2 dual ISH Assay (Roche Diagnostics GmbH, Mannheim, Germany) was executed on a VENTANA BenchMark ULTRA autostainer using Ventana HER2 Dual ISH DNA Probe cocktail with Ventana silver ISH DNP and Ventana Red ISH DIG Detection kits (Roche Diagnostics GmbH, Mannheim, Germany). For FISH, a CEN17/*ERBB2* Dual Color Probe was used (ZytoVision GmbH, Bremerhaven, Germany). Pre-treatment, denaturation, hybridization, and detection were done with the ZytoLight FISH-Tissue Implementation Kit (ZytoVision GmbH, Bremerhaven, Germany) according to the manufacturer's protocol. Slides were evaluated using an Olympus A0485 fluorescence microscope with UPlanSApo 60x objective. In addition, the uniformity of HER2 expression in all samples was microscopically evaluated by two board certified pathologists (TG, DH). HER2 heterogeneity was assessed for all staining intensities as described by Motoshima et al [25].

EBV

To detect Epstein-Barr virus-encoded small RNAs (EBER), automated *in-situ* hybridization was performed on VENTANA BenchMark ULTRA autostainer with Ventana EBER Probe and VENTANA ISH iView Blue Detection Kit (Roche Diagnostics GmbH, Mannheim, Germany)

MSI

Microsatellite status was determined using Idylla MSI Test (Biocartis NV, Belgium) according to the manufacturer's protocol.

Nucleic acid isolation

For DNA and RNA isolation, one to five 10 µm FFPE tissue sections were cut for tumor and normal samples. The tumor areas were macro-dissected, guided by prior markings on a HE-stained slide, to ensure high tumor content. Nucleic acid isolation was performed with the RecoverAll™ Multi-Sample RNA/DNA Isolation Workflow according to the manufacturer's protocol. Concentrations were determined using a Qubit™ 3 fluorometer with the Qubit™ RNA high sensitivity (HS) Assay-Kit and Qubit™ dsDNA HS Assay-Kit. Devices and reagents were purchased from Thermo Fisher Scientific, Waltham, MA, USA.

Target panel sequencing

Prior to library preparation, 20 ng DNA was treated with uracil DNA glycosylase according to the manufacturer's protocol. Then the DNA was used to prepare the sequencing library for the OncoPrint™ Tumor Mutation Load Assay (TML) with an Ion Chef Instrument. Libraries were diluted to 50 pM and loaded with an Ion 540 chip for sequencing on an Ion GeneStudio™ S5 Prime system. The TML panel covers 409 full-length genes and 1.65 Mb. Sequencing and library preparation were performed in duplicates for all samples. Devices and reagents for library preparation and sequencing were obtained from Thermo Fisher Scientific, Waltham, MA, USA.

Bam files of tumor and normal samples were downloaded from the IonReporter for analysis of single nucleotide and copy number variants (SNV/CNV) using an automated snakemake pipeline [26]. Detailed information and the pipeline code are available on github (<https://github.com/JPorth/TMLflow>). In CNV calling, shallow amplification, amplification, deletion and deep deletion were defined at the following copy number (CN) thresholds: $CN \geq 3$, $CN \geq 4$, $CN \leq 1$ and $CN = 0$, respectively. SNVs were filtered for allele frequency (AF) > 0.1 and read depth (DP) > 250 . All mutations were visually inspected using the Integrative Genomics Viewer [27]. TMB was calculated by dividing the number of mutations, including nonsynonymous and frameshift mutations, by the Mb size of the TML panel.

Microarray

18 tumor and 5 healthy gastric mucosa RNA samples were used for gene expression profiling using GeneChip® Human Transcriptome 2.0 Arrays (Thermo Fisher Scientific, Waltham, MA, USA). Biotinylated antisense cDNA was then prepared according to the standard labeling protocol with the GeneChip® WT Plus Reagent Kit and the GeneChip® Hybridization, Wash and Stain Kit (Thermo Fisher Scientific, Waltham, MA, USA). Next, the hybridization on the chip was performed in a GeneChip® Hybridization oven 640, then dyed in the GeneChip® Fluidics Station 450 and subsequently scanned with a GeneChip® Scanner 3000. All of the equipment used was from the Affymetrix-Company (Affymetrix, High Wycombe, UK). A Custom CDF Version 22 with ENTREZ-based gene definitions was used to annotate the arrays [28]. The raw fluorescence intensity values were normalized by applying quantile normalization and RMA background correction. Pat1 could not be included in the Affymetrix microarray analysis as the patient sample arrived after the experiment.

Bioinformatics immune cell analysis

For evaluation of immune cell populations and activity, normalized expression values were used as input for xCell [29], CIBERSORTx [30] and for calculation of the cytolytic activity (CYT) score [31]. With CIBERSORTx, the absolute cell fractions of 22 immune cell types were calculated. The gene signature enrichment of 64 cell types was analyzed with xCell.

Statistical analysis

Statistical analysis was performed with GraphPad Prism 9 (GraphPad Software; www.graphpad.com) and R4.0.5 (<https://www.r-project.org/>). The Wilcoxon rank sum test was applied for comparisons of continuous variables between patient groups. Categorical variables were tested with Fisher's exact test. The association between data series was calculated using the Spearman correlation coefficient. Progression-free survival was statistically evaluated using Kaplan-Meier analysis and compared with the Mantel-Haenszel test. Statistical significance was accepted at $p \leq 0.05$. The significance levels were defined as follows: ns not significant, $*p \leq 0.05$, $**p \leq 0.01$.

Data availability

The Affymetrix gene expression microarray data of 18 tumor and 5 normal samples are on GEO under accession number GSE220917. Sequencing data will be provided upon request.

Results

19 patients with HER2-positive mGC/mGEJC adenocarcinomas obtained from four German medical centers were included in this retrospective study. The patients were grouped according to PFS under trastuzumab-based therapy into a short-term responder group (n=12) and a long-term responder group (n=7). At a median follow-up of 18 months, the median PFS was 6 months and 22 months in the short-term responding and long-term responding patients, respectively. There were no significant differences in the clinicopathological characteristics or the HER2 status between patient groups (Table 1). However, there was a slight gender and age imbalance, as patients in the long-term responding group were all male (p=0.2) and they tend to be younger at diagnosis (p=0.1).

Table 1 Clinicopathological patient characteristics in long-term responding versus short-term responding patients

Characteristics	Long-Term Responder (n=7) ¹	Short-Term Responder (n=12) ¹	p-value ²
Age	59 (58,62)	71 (63,72)	0.1
Gender			0.2
male	7 (100 %)	8 (67%)	
female	0 (0%)	4 (33%)	
PFS	22 (19,40)	6 (4,9)	<0.001
Location			>0.6
GEJC	3 (43%)	7 (58%)	
GC	4 (57%)	5 (42%)	
Differentiation			>0.9
G2	4 (57%)	6 (45%)	
G3	3 (43%)	5 (45%)	
unknown	0	1 (9.1 %)	
No. of metastatic sites			0.5
1	3 (43%)	4 (33%)	
2	2 (29%)	7 (58%)	
>2	2 (29%)	1 (8.3%)	
Perioperative chemotherapy*	1 (14%)	3 (25%)	>0.9
HER2 Status			>0.9
2+ (ISH positive)	2 (29%)	5 (36%)	
3+	5 (71%)	7 (64%)	

¹ n (%); Median (IQR)

² Fisher's exact test; Wilcoxon rank sum test

* Without trastuzumab

Immunohistochemical staining of PD-L1 was performed on tumor samples prior to trastuzumab treatment (Figure 2A). A positive PD-L1 status (CPS≥1) was detected in 47.3 % of the patients. Although CPS values were in general very low, CPS was significantly higher in long-term responders compared to patients with short-term response (p=0.005, Figure 2B). Further statistical analysis revealed a correlation between CPS and PFS, when the

patients were not grouped ($r=0.596$, $p=0.007$, Figure 2C). PD-L1 positivity was statistically associated with longer PFS (hazard ratio 0.27, 95% CI 0.084-0.841, Figure 2D) compared to PD-L1 negative patients. In addition, PD-L1 expression was significantly correlated with younger age at diagnosis ($p=0.019$).

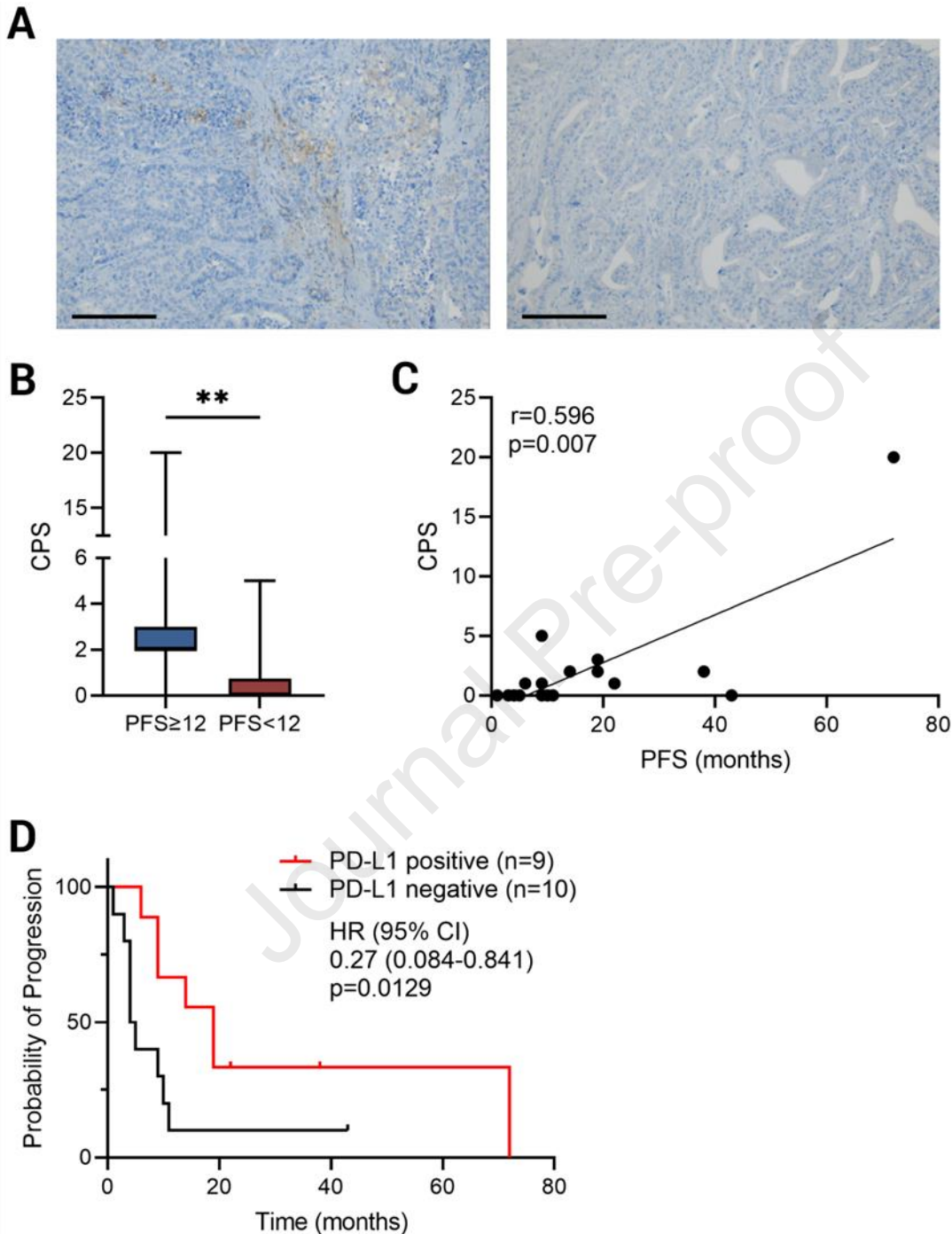


Figure 2 Evaluation of clinical relevance of PD-L1 expression in HER2-positive mGC/mGEJC. A: Exemplary PD-L1 IHC stainings of mGC/mGEJC sections of patients with high (left) and low combined positive score (CPS, right). Scale bar: 50 μ m. B: Comparison of PD-L1 CPS between long-term responding (blue) and short-term responding (red) patients. C: Correlation analysis of PFS and PD-L1 CPS using the Spearman rank coefficient and linear regression; D: Kaplan-Meier survival curve comparing PD-L1 positive and negative patients.

To investigate immune cell populations and activity in the patient cohort, the microarray data was analyzed with xCell and CIBERSORTx. Both cell population analyses did not exhibit differences in CD8+ and CD4+ T-cells between the patient groups (Supplementary figure 1), but the analysis detected an increased abundance of CD4+ memory T-cells in PD-L1-positive patients (Figure 3). XCell additionally determined higher CD4+ T central memory (Tcm) and CD8+ T effector memory (Tem) cells in PD-L1 negative patients (Figure 3A). Furthermore, the CYT score was significantly increased in the long-term responder patients but was not associated with positive PD-L1 status (Supplementary figure 2). There was also no correlation between TMB and PD-L1 status (Supplementary figure 3). As a side note, all tumor samples were negative for EBV and microsatellite stable (data not shown).

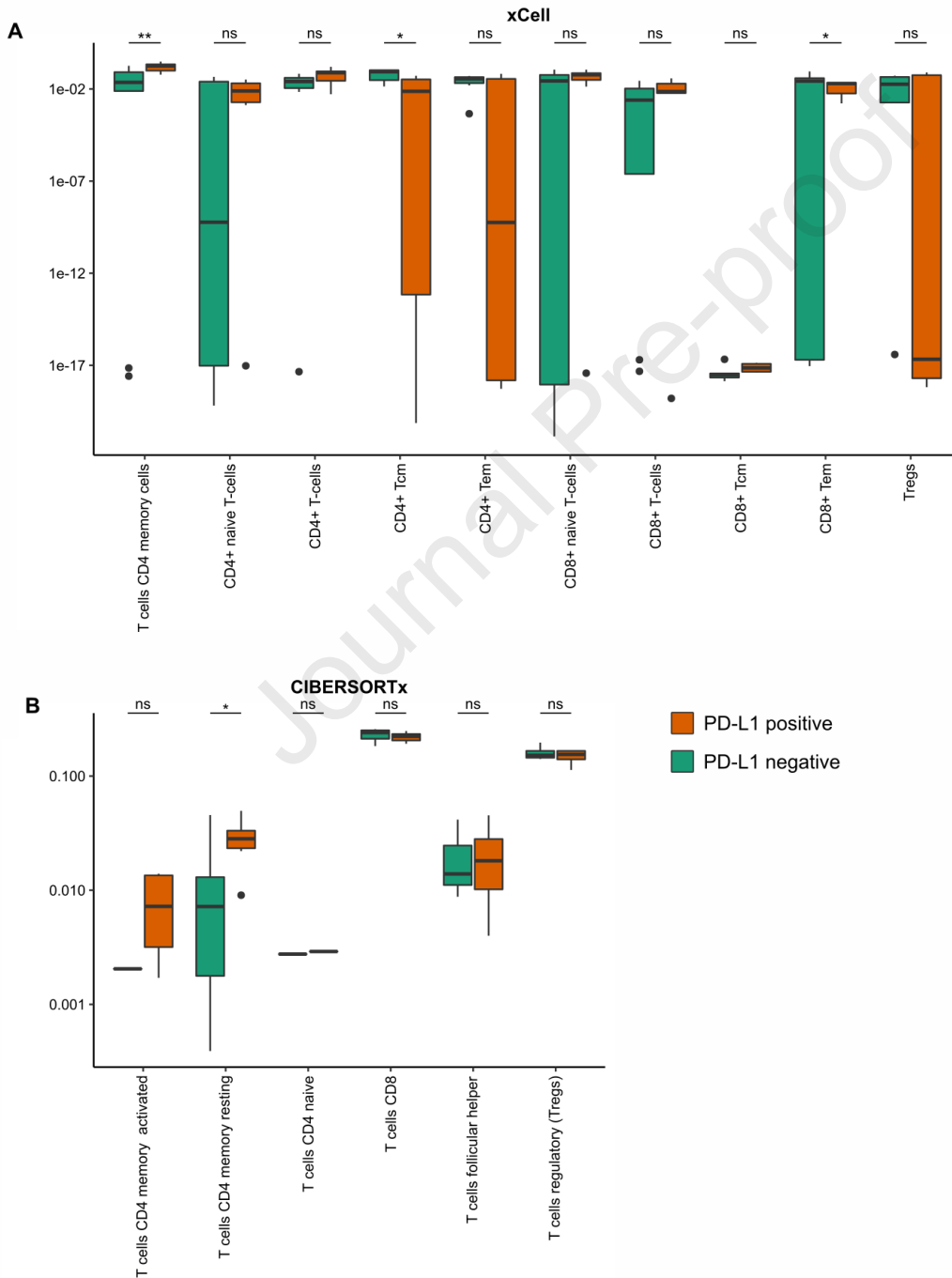


Figure 3 Comparison of T-cell scores between PD-L1-positive and PD-L1-negative patients using A) xCell and B) CIBERSORTx

All included patients had a positive IHC and/or ISH HER2 status according local pathology and centrally confirmation was achieved in 95% (18/19) of the patients. One locally HER2 IHC 3+ tested patient did not show any HER2 staining or FISH amplification at central testing. The reason for this could not conclusively be clarified but intratumoral heterogeneity could be a factor. Determining *ERBB2* CN with NGS revealed an amplification in 68 % of the patients. The level of amplification did not differ significantly between patient PFS groups (Figure 4A). The detected *ERBB2* CN was lower in resection specimen, which made up 32 % of the tumor samples, but the trend was not statistically significant (Figure 4B). Moreover, higher *ERBB2* CN were determined in samples with homogenous HER2 expression compared to samples with heterogeneous expression pattern (Figure 4C).

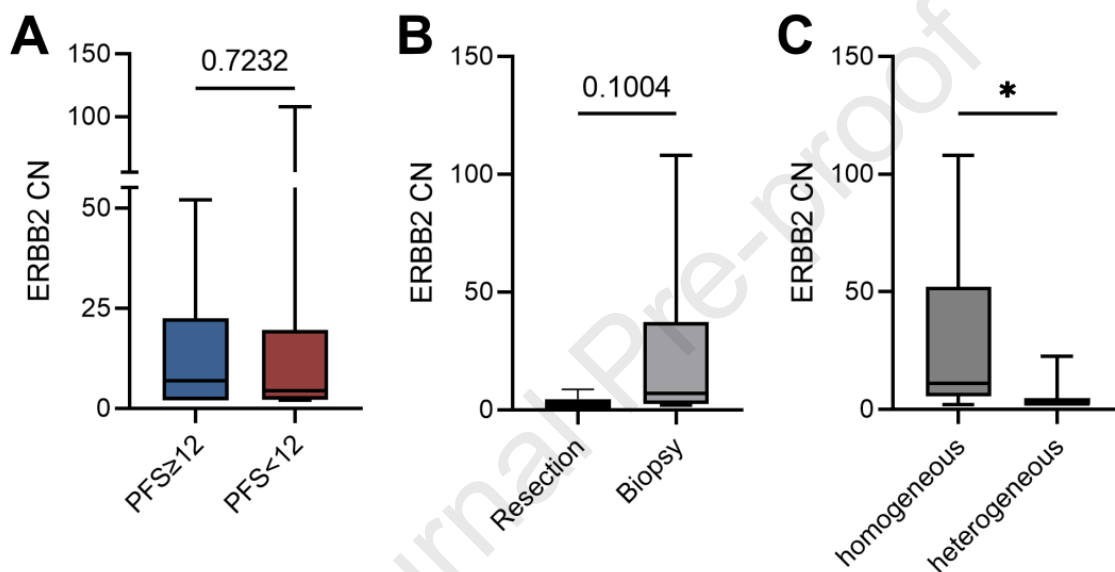


Figure 4 Evaluation of *ERBB2* CN in context of progression-free survival (A), tumor sample type (B) and HER2 expression pattern (C)

Two patients in the long-term responder group had missense mutations in *ERBB2* (Figure 5A). In Patient 5, the *ERBB2* p.P489L mutation was detected together with an *EGFR* R408Q mutation. In this case, *ERBB2* was not amplified based on NGS analysis. Patient 4 carried the *ERBB2* mutation p.V777L in addition to the *ERBB2* amplification. Mutations in HER2 signaling associated genes occurred solely for *EGFR* (2 of 19 patients) and were evenly distributed among the different prognostic groups. Mutations in *KRAS*, *MET* and *PIK3CA* were not detected. *ERBB2* was frequently co-amplified with *PGAP3*, *RARA* and *CDK12*, which are in spatial proximity to *ERBB2* on chr17. Furthermore, *CCNE1* and *MYC* amplifications were both found in 26 % of the patients. The copy numbers of these co-amplified genes did not differ significantly between responder groups (Supplementary figure 4)

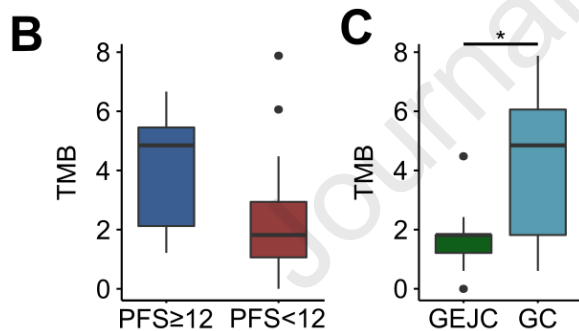
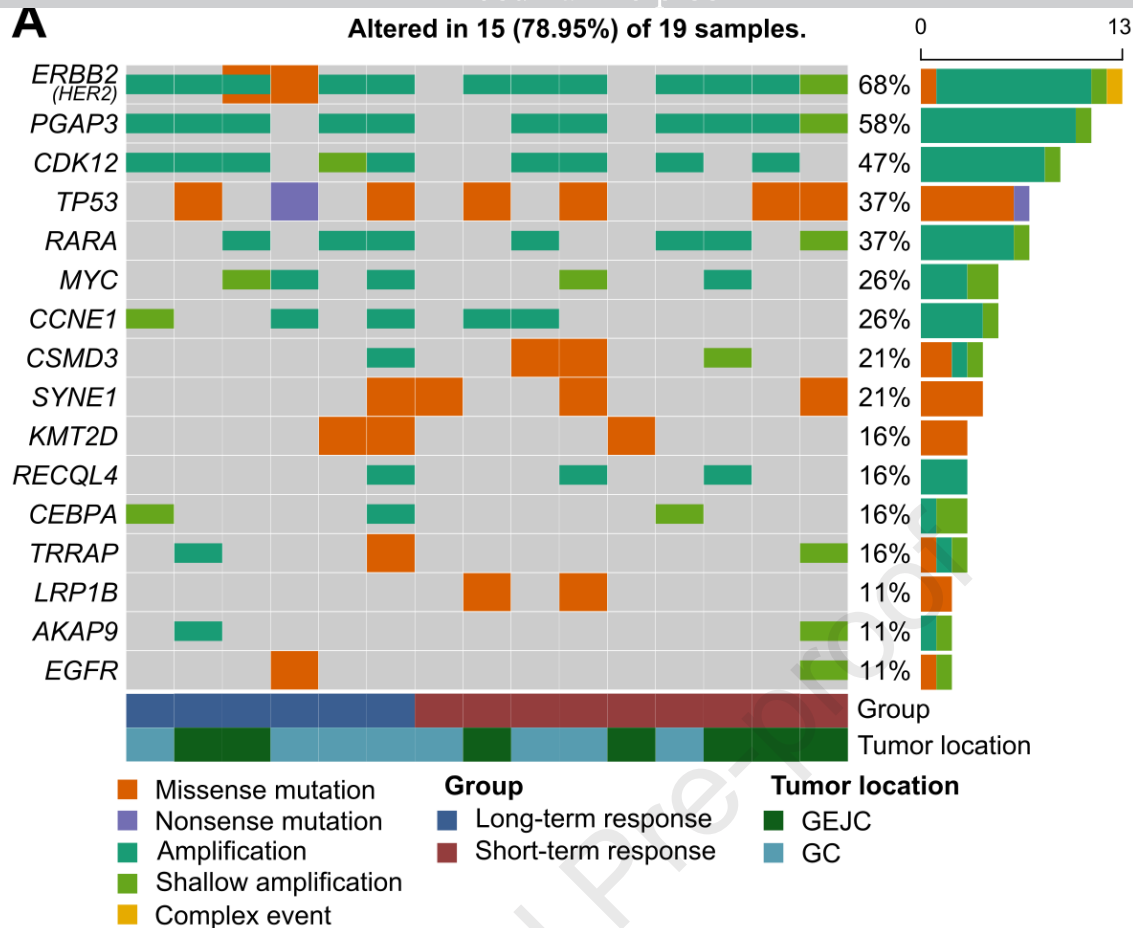


Figure 5 Distribution of molecular alterations and TMB in HER2-positive mGC/mGEJC patients A) Oncoplot summarizing the single nucleotide and copy number variants. C) Tumor mutational burden (TMB) calculated for both patient groups D) TMB association with tumor location

In the next step, the TMB was calculated based on the SNV data. A non-significant trend of higher TMB in long-term responding patients could be observed ($p=0.141$, Figure 5B), but the TMB was significantly different depending on tumor location ($p=0.049$, Figure 5C). The median TMB was 1.82 and 4.85 in tumors located in the GEJC and GC, respectively.

DISCUSSION

In this retrospective, multicenter study, we screened for prognostic biomarkers of long-term response to trastuzumab in HER2-positive mGC/mGEJC and found increased PD-L1 expression in the patient group with superior response. In addition, we detected that CD4+ memory T-cells were upregulated in PD-L1-positive patients. A significant prognostic value of *ERBB2* CN, TMB and genomic alterations associated with HER2 signaling could not be confirmed in this cohort.

PD-L1 expression has been found to co-occur with HER2-positivity in 25-85% of GC/GEJ patients [21-23,32]. With 47.3% of HER2+/PD-L1+ patients, our result falls within the reported range. The prognostic role of PD-L1 expression in context of HER2-positive GC is controversial in literature. In the study by Lian et al., combined HER2 and PD-L1 positivity was associated with improved overall survival in resectable GC [22]. In contrast, Lv et al. showed that HER2+/PD-L1+ GC patients had inferior survival compared with HER2-/PD-L1- patients [32]. The authors speculated that immunotherapy would be less suitable for HER2-positive GC, which is controversial since the first interim analysis of the KEYNOTE-811 demonstrated an increased response rate of HER2-positive mGC/mGEJC patients to trastuzumab and pembrolizumab combined with chemotherapy [21]. We found improved PFS in HER2+/PD-L1+ mGC/mGEJC patients, which is in accordance with the Lian et al. [22]. Due to the design of the study, it could not be concluded if PD-L1 expression is prognostic or predictive in the context of trastuzumab treatment. Taking into account that even in the context of immune checkpoint inhibitors PD-L1 has limitations as predictive biomarker due to variability in evaluated cell type and thresholds for positivity [33], clarifying this issue is reserved for biomarker analysis within large clinical trials, like the KEYNOTE-811 [21].

We observed an increased CD4+ memory T-cells score in PD-L1-positive patients which is in accordance with literature as PD-L1 expression in GC was associated with increased numbers of tumor infiltrating lymphocytes (TIL), such as CD4+ and CD8+ T-cells [34,35]. However, the studies are controversial about the effect of TIL on survival. The presence of CD8+ T-cells in combination with PD-L1 expression was associated with improved and impaired OS in HER2 negative GC [36,37]. To our knowledge, increased CD4+ memory T-cells in PD-L1 and HER2 positive mGC/mGEJC versus PD-L1 negative and HER2 positive mGC/mGEJC have not been reported yet.

To date, positive HER2 status by IHC or ISH is the prerequisite for the administration of trastuzumab in mGC/mGEJC patients. Besides that, a higher amplification level of *ERBB2* was tended to be associated with improved survival under trastuzumab treatment [9-12]. NGS is an emerging technology with the potential to detect the absolute *ERBB2* copy number. A cut-off defining high *ERBB2* amplification in sequencing data has not been established yet. Studies have used the median *ERBB2* CN or calculation of the receiver operating characteristic curve to set a threshold for identification of patients with long-term benefit. However, there is no consensus about the best threshold defining a high *ERBB2* amplification in NGS data [10,12]. In our cohort, the anticipated *ERBB2* amplification could only be confirmed by using NGS in 68% of the patient. Heterogeneity as well as low tumor purity could explain this discrepancy between detected HER2 status by IHC/ISH and *ERBB2* CN assessed by NGS [38,39].

ERBB2 mutations rarely occur in HER2-positive mGC/mGEJC but are mainly associated with resistance to trastuzumab [10,40,41]. In our study, we detected two *ERBB2* missense mutations (p.V777L and p.P489L) in two long-term responding patients. The p.V777L missense mutation was located in the tyrosine kinase domain and was reported once in a HER2-positive mGC patient with fast-progressing disease under trastuzumab [10]. One may speculate that in our case the mutational surrounding complementing the *ERBB2* mutation might

have changed the anticipated effect of this mutation. The other *ERBB2* mutation, p.F469L, was located in the extracellular domain of HER2. It has not been reported in context of trastuzumab response in mGC/mGEJC, yet but it was associated with increased sensitivity to trastuzumab in acute myeloid leukemia [42].

Mutations or amplification in HER2 signaling associated genes like *EGFR*, *KRAS*, *MET* or *PIK3CA* occurring in addition to *ERBB2* alterations were found to be predictors for impaired response or resistance to trastuzumab treatment [10,15]. Of the above-mentioned genes, only *EGFR* alterations were detected in our study but no association to the patient groups was obvious. In general, the detected genetic alterations were not associated with PFS in our study.

Our work has several limitations. First, our retrospective cohort has a small sample size. In addition, the cohorts are heterogeneous with respect to tumor location (GEJC vs. GC). All analyzed samples were collected prior to trastuzumab treatment, thus acquired response mechanisms have not been investigated. We perform targeted panel sequencing which restricts the analysis of genomic alterations to 409 genes. Alterations in genomic regions outside the targeted genes might have been missed in this study. A stringent AF (>0.1) and DP (>250) thresholds for SNV calling to exclude sequencing artifacts could have resulted in missing low frequency mutations.

Conclusions

To conclude, in our study *ERBB2* CN, TMB, co-amplifications or mutations in HER2 pathway associated genes did not exhibit prognostic relevance for detecting trastuzumab long-term responding patients. However, the data highlights the clinical relevance of PD-L1 IHC testing also in the context of trastuzumab treatment and offers a biological rationale by demonstrating elevated CD4⁺ memory T-cells in the PD-L1-positive group.

Funding

This study was funded by the Stiftung Deutsche Krebshilfe (70113500).

References

- [1] Sung H, Ferlay J, Siegel RL, Laversanne M, Soerjomataram I, Jemal A, et al. Global Cancer Statistics 2020: GLOBOCAN Estimates of Incidence and Mortality Worldwide for 36 Cancers in 185 Countries. *CA Cancer J Clin* 2021;71:209–49. <https://doi.org/10.3322/caac.21660>.
- [2] Baretton G, Kreipe HH, Schirmacher P, Gaiser T, Hofheinz R, Berghauer KH, et al. HER2 testing in gastric cancer diagnosis: insights on variables influencing HER2-positivity from a large, multicenter, observational study in Germany. *Virchows Arch* 2019;474:551–60. <https://doi.org/10.1007/s00428-019-02541-9>.
- [3] Bang YJ, Van Cutsem E, Feyereislova A, Chung HC, Shen L, Sawaki A, et al. Trastuzumab in combination with chemotherapy versus chemotherapy alone for treatment of HER2-positive advanced gastric or gastro-oesophageal junction cancer (ToGA): a phase

- 5, open-label, randomised controlled trial. *Lancet* 2010;376:667–97. [https://doi.org/10.1016/S0140-6736\(10\)61121-X](https://doi.org/10.1016/S0140-6736(10)61121-X).
- [4] Lordick F, Carneiro F, Cascinu S, Fleitas T, Haustermans K, Piessen G, et al. Gastric cancer: ESMO Clinical Practice Guideline for diagnosis, treatment and follow-up. *Ann Oncol* 2022. <https://doi.org/10.1016/j.annonc.2022.07.004>.
- [5] Fu X, Zhang Y, Yang J, Qi Y, Ming Y, Sun M, et al. Efficacy and safety of trastuzumab as maintenance or palliative therapy in advanced HER2-positive gastric cancer. *Onco Targets Ther* 2018;11:6091–100. <https://doi.org/10.2147/OTT.S174138>.
- [6] Ilhan-Mutlu A, Taghizadeh H, Beer A, Dolak W, Ba-Ssalamah A, Schoppmann SF, et al. Correlation of trastuzumab-based treatment with clinical characteristics and prognosis in HER2-positive gastric and gastroesophageal junction cancer: A retrospective single center analysis. *Cancer Biol Ther* 2018;19:169–74. <https://doi.org/10.1080/15384047.2017.1414759>.
- [7] Puhr HC, Ilhan-Mutlu A. A case report on the long-term survival of a patient with HER2-positive metastatic gastric adenocarcinoma and a short review of the current literature. *Memo - Magazine of European Medical Oncology* 2020;13:453–8. <https://doi.org/10.1007/s12254-020-00649-2>.
- [8] Schade S, Koenig U, Mekolli A, Gaedcke J, Neesse A, Reinecke J, et al. Cure Is Possible: Extensively Metastatic HER2-Positive Gastric Carcinoma with 5 years of Complete Remission after Therapy with the FLOT Regimen and Trastuzumab. *Case Rep Gastroenterol* 2022;16:80–8. <https://doi.org/10.1159/000520057>.
- [9] Gomez-Martin C, Plaza JC, Pazo-Cid R, Salud A, Pons F, Fonseca P, et al. Level of HER2 gene amplification predicts response and overall survival in HER2-positive advanced gastric cancer treated with trastuzumab. *J Clin Oncol* 2013;31:4445–52. <https://doi.org/10.1200/JCO.2013.48.9070>.
- [10] Hino K, Nishina T, Kajiwara T, Bando H, Nakamura M, Kadowaki S, et al. Association of ERBB2 Copy Number and Gene Coalterations With Trastuzumab Efficacy and Resistance in Human Epidermal Growth Factor Receptor 2-Positive Esophagogastric and Gastric Cancer. *JCO Precis Oncol* 2022;6:e2200135. <https://doi.org/10.1200/PO.22.00135>.
- [11] Ock CY, Lee KW, Kim JW, Kim JS, Kim TY, Lee KH, et al. Optimal Patient Selection for Trastuzumab Treatment in HER2-Positive Advanced Gastric Cancer. *Clin Cancer Res* 2015;21:2520–9. <https://doi.org/10.1158/1078-0432.CCR-14-2659>.
- [12] Stein SM, Snider J, Ali SM, Miksad RA, Alexander BM, Castellanos E, et al. Real-world association of HER2/ERBB2 concordance with trastuzumab clinical benefit in advanced esophagogastric cancer. *Future Oncol* 2021;17:4101–14. <https://doi.org/10.2217/fon-2021-0203>.
- [13] Kim HR, Ahn S, Jo H, Kim H, Hong J, Lee J, et al. The Impact of Tumor Mutation Burden on the Effect of Frontline Trastuzumab Plus Chemotherapy in Human Epidermal Growth Factor Receptor 2-Positive Advanced Gastric Cancers. *Front Oncol* 2021;11:792340. <https://doi.org/10.3389/fonc.2021.792340>.
- [14] Kim J, Fox C, Peng S, Pusung M, Pectasides E, Matthee E, et al. Preexisting oncogenic events impact trastuzumab sensitivity in ERBB2-amplified gastroesophageal adenocarcinoma. *J Clin Invest* 2014;124:5145–58. <https://doi.org/10.1172/JCI75200>.
- [15] Pietrantonio F, Fuca G, Morano F, Gloghini A, Corso S, Aprile G, et al. Biomarkers of Primary Resistance to Trastuzumab in HER2-Positive Metastatic Gastric Cancer Patients:

- [16] Wakatsuki T, Yamamoto N, Sano T, Chin K, Kawachi H, Takahari D, et al. Clinical impact of intratumoral HER2 heterogeneity on trastuzumab efficacy in patients with HER2-positive gastric cancer. *J Gastroenterol* 2018;53:1186–95. <https://doi.org/10.1007/s00535-018-1464-0>.
- [17] Yagi S, Wakatsuki T, Yamamoto N, Chin K, Takahari D, Ogura M, et al. Clinical significance of intratumoral HER2 heterogeneity on trastuzumab efficacy using endoscopic biopsy specimens in patients with advanced HER2 positive gastric cancer. *Gastric Cancer* 2019;22:518–25. <https://doi.org/10.1007/s10120-018-0887-x>.
- [18] Kaito A, Kuwata T, Tokunaga M, Shitara K, Sato R, Akimoto T, et al. HER2 heterogeneity is a poor prognosticator for HER2-positive gastric cancer. *World J Clin Cases* 2019;7:1964–77. <https://doi.org/10.12998/wjcc.v7.i15.1964>.
- [19] Janjigian YY, Shitara K, Moehler M, Garrido M, Salman P, Shen L, et al. First-line nivolumab plus chemotherapy versus chemotherapy alone for advanced gastric, gastro-oesophageal junction, and oesophageal adenocarcinoma (CheckMate 649): a randomised, open-label, phase 3 trial. *Lancet* 2021;398:27–40. [https://doi.org/10.1016/S0140-6736\(21\)00797-2](https://doi.org/10.1016/S0140-6736(21)00797-2).
- [20] Sun JM, Shen L, Shah MA, Enzinger P, Adenis A, Doi T, et al. Pembrolizumab plus chemotherapy versus chemotherapy alone for first-line treatment of advanced oesophageal cancer (KEYNOTE-590): a randomised, placebo-controlled, phase 3 study. *Lancet* 2021;398:759–71. [https://doi.org/10.1016/S0140-6736\(21\)01234-4](https://doi.org/10.1016/S0140-6736(21)01234-4).
- [21] Janjigian YY, Kawazoe A, Yanez P, Li N, Lonardi S, Kolesnik O, et al. The KEYNOTE-811 trial of dual PD-1 and HER2 blockade in HER2-positive gastric cancer. *Nature* 2021;600:727–30. <https://doi.org/10.1038/s41586-021-04161-3>.
- [22] Lian J, Zhang G, Zhang Y, Liu H, Zhang J, Nan P, et al. PD-L1 and HER2 expression in gastric adenocarcinoma and their prognostic significance. *Dig Liver Dis* 2022;54:1419–27. <https://doi.org/10.1016/j.dld.2022.01.128>.
- [23] Janjigian Y, Rha S, Oh D, Díez García M, Laarhoven H van, Chao Y, et al. SO-7 Co-occurring HER2 and PD-L1 expression in patients with HER2-positive trastuzumab-refractory gastric cancer (GC)/gastroesophageal junction adenocarcinoma (GEJA): Biomarker analysis from the trastuzumab deruxtecan (T-DXd) DESTINY-Gastric03 trial. *Annals of Oncology* 2022;33:S358–9. <https://doi.org/10.1016/j.annonc.2022.04.406>.
- [24] Ruschoff J, Hanna W, Bilous M, Hofmann M, Osamura RY, Penault-Llorca F, et al. HER2 testing in gastric cancer: a practical approach. *Mod Pathol* 2012;25:637–50. <https://doi.org/10.1038/modpathol.2011.198>.
- [25] Motoshima S, Yonemoto K, Kamei H, Morita M, Yamaguchi R. Prognostic implications of HER2 heterogeneity in gastric cancer. *Oncotarget* 2018;9:9262–72. <https://doi.org/10.18632/oncotarget.24265>.
- [26] Molder F, Jablonski KP, Letcher B, Hall MB, Tomkins-Tinch CH, Sochat V, et al. Sustainable data analysis with Snakemake. *F1000Res* 2021;10:33. <https://doi.org/10.12688/f1000research.29032.2>.
- [27] Robinson JT, Thorvaldsdottir H, Wenger AM, Zehir A, Mesirov JP. Variant Review with the Integrative Genomics Viewer. *Cancer Research* 2017;77:E31–4. <https://doi.org/10.1158/0008-5472.Can-17-0337>.

- [28] Dai M, Wang F, Boyd AD, Kostov G, Alley D, Jones EG, et al. Evolving gene/transcript definitions significantly alter the interpretation of GeneChip data. *Nucleic Acids Res* 2005;33:e175. <https://doi.org/10.1093/nar/gni179>.
- [29] Aran D, Hu Z, Butte AJ. xCell: digitally portraying the tissue cellular heterogeneity landscape. *Genome Biol* 2017;18:220. <https://doi.org/10.1186/s13059-017-1349-1>.
- [30] Newman AM, Steen CB, Liu CL, Gentles AJ, Chaudhuri AA, Scherer F, et al. Determining cell type abundance and expression from bulk tissues with digital cytometry. *Nature Biotechnology* 2019;37:773+. <https://doi.org/10.1038/s41587-019-0114-2>.
- [31] Wakiyama H, Masuda T, Motomura Y, Hu QJ, Tobo T, Eguchi H, et al. Cytolytic Activity (CYT) Score Is a Prognostic Biomarker Reflecting Host Immune Status in Hepatocellular Carcinoma (HCC). *Anticancer Research* 2018;38:6631–8. <https://doi.org/10.21873/anticancer.13030>.
- [32] Lv H, Zhang J, Sun K, Nie C, Chen B, Wang J, et al. Expression of Human Epidermal Growth Factor Receptor-2 Status and Programmed Cell Death Protein-1 Ligand Is Associated With Prognosis in Gastric Cancer. *Front Oncol* 2020;10:580045. <https://doi.org/10.3389/fonc.2020.580045>.
- [33] Davis AA, Patel VG. The role of PD-L1 expression as a predictive biomarker: an analysis of all US Food and Drug Administration (FDA) approvals of immune checkpoint inhibitors. *J Immunother Cancer* 2019;7:278. <https://doi.org/10.1186/s40425-019-0768-9>.
- [34] Wang YL, Gong Y, Lv Z, Li L, Yuan Y. Expression of PD1/PDL1 in gastric cancer at different microsatellite status and its correlation with infiltrating immune cells in the tumor microenvironment. *J Cancer* 2021;12:1698–707. <https://doi.org/10.7150/jca.40500>.
- [35] Zurlo IV, Schino M, Strippoli A, Calegari MA, Cocomazzi A, Cassano A, et al. Predictive value of NLR, TILs (CD4+/CD8+) and PD-L1 expression for prognosis and response to preoperative chemotherapy in gastric cancer. *Cancer Immunol Immunother* 2022;71:45–55. <https://doi.org/10.1007/s00262-021-02960-1>.
- [36] Thompson ED, Zahurak M, Murphy A, Cornish T, Cuka N, Abdelfatah E, et al. Patterns of PD-L1 expression and CD8 T cell infiltration in gastric adenocarcinomas and associated immune stroma. *Gut* 2017;66:794–801. <https://doi.org/10.1136/gutjnl-2015-310839>.
- [37] Choi E, Chang MS, Byeon SJ, Jin H, Jung KC, Kim H, et al. Prognostic perspectives of PD-L1 combined with tumor-infiltrating lymphocytes, Epstein-Barr virus, and microsatellite instability in gastric carcinomas. *Diagn Pathol* 2020;15:69. <https://doi.org/10.1186/s13000-020-00979-z>.
- [38] Ross DS, Zehir A, Cheng DT, Benayed R, Nafa K, Hechtman JF, et al. Next-Generation Assessment of Human Epidermal Growth Factor Receptor 2 (ERBB2) Amplification Status: Clinical Validation in the Context of a Hybrid Capture-Based, Comprehensive Solid Tumor Genomic Profiling Assay. *J Mol Diagn* 2017;19:244–54. <https://doi.org/10.1016/j.jmoldx.2016.09.010>.
- [39] Yang J, Luo H, Li Y, Li J, Cai Z, Su X, et al. Intratumoral heterogeneity determines discordant results of diagnostic tests for human epidermal growth factor receptor (HER) 2 in gastric cancer specimens. *Cell Biochem Biophys* 2012;62:221–8. <https://doi.org/10.1007/s12013-011-9286-1>.
- [40] Park S, Ahn S, Kim DG, Kim H, Kang SY, Kim KM. High Frequency of Juxtamembrane Domain ERBB2 Mutation in Gastric Cancer. *Cancer Genomics Proteomics* 2022;19:105–12. <https://doi.org/10.21873/cgp.20307>.

[41] Jiao XD, Liu R, Wu Y, Zhou XC, Qin BD, Ling Y, et al. HER2 Splice Site Mutation c.1899-1G>A as the Potential Acquired Resistance to Trastuzumab in a Patient with HER2-Positive Gastric Adenocarcinoma. *Oncologist* 2021;26:717–21. <https://doi.org/10.1002/onco.13799>.

[42] Joshi SK, Keck JM, Eide CA, Bottomly D, Traer E, Tyner JW, et al. ERBB2/HER2 mutations are transforming and therapeutically targetable in leukemia. *Leukemia* 2020;34:2798–804. <https://doi.org/10.1038/s41375-020-0844-7>.

Journal Pre-proof

Highlights

- Identify potential new prognostic biomarkers for trastuzumab long-term response
- Retrospective study of HER2-positive gastric cancer patients treated with trastuzumab
- Biomarker analysis using immunohistochemistry, NGS and gene-expression analysis
- PD-L1 expression has clinical relevance for HER2-positive gastric cancer
- PD-L1 positivity was associated with higher CD4+ memory T-cell scores

Journal Pre-proof

Declaration of interests

The authors declare that they have no known competing financial interests or personal relationships that could have appeared to influence the work reported in this paper.

The authors declare the following financial interests/personal relationships which may be considered as potential competing interests:

Wilko Weichert has attended and given talks at Advisory Boards, gave advice to and served as speaker on national and international conferences for MSD, BMS, AstraZeneca, Roche, Pfizer, Merck, Lilly, Boehringer, Novartis, Takeda, Bayer, Amgen, Astellas, Eisai, Johnson&Johnson, Janssen, Illumina, Siemens, Agilent, ADC, GSK and Molecular Health. Wilko Weichert receives research funding from Roche, MSD, BMS and AstraZeneca; Timo Gaiser received honoraria from MSD, Roche, AstraZeneca and BMS. All remaining authors have declared no conflicts of interest.