

Tilburg University

The Psychological Science Accelerator's COVID-19 rapid-response dataset



OPEN

DATA DESCRIPTOR

The Psychological Science Accelerator's COVID-19 rapid-response dataset

Erin M. Buchanan *et al.*[#]

In response to the COVID-19 pandemic, the Psychological Science Accelerator coordinated three large-scale psychological studies to examine the effects of loss-gain framing, cognitive reappraisals, and autonomy framing manipulations on behavioral intentions and affective measures. The data collected (April to October 2020) included specific measures for each experimental study, a general questionnaire examining health prevention behaviors and COVID-19 experience, geographical and cultural context characterization, and demographic information for each participant. Each participant started the study with the same general questions and then was randomized to complete either one longer experiment or two shorter experiments. Data were provided by 73,223 participants with varying completion rates. Participants completed the survey from 111 geopolitical regions in 44 unique languages/dialects. The anonymized dataset described here is provided in both raw and processed formats to facilitate re-use and further analyses. The dataset offers secondary analytic opportunities to explore coping, framing, and self-determination across a diverse, global sample obtained at the onset of the COVID-19 pandemic, which can be merged with other time-sampled or geographic data.

Background & Summary

In 2020, the rise of the COVID-19 pandemic presented enormous challenges to people's health and well-being. In response to this challenge, in March 2020, the Psychological Science Accelerator (PSA)¹ announced a call for studies focusing on applied research to answer questions on how to reduce the negative emotional and behavioral impacts of the pandemic, the PSA COVID-Rapid (PSACR) Project. The PSA is a global collaborative network of over 1,000 members across 80+ countries/geopolitical locations that develop large, "big-team science" projects. Three research studies were selected to pursue, paired with a general survey about health behaviors, COVID-19 experiences, and demographic information (<https://osf.io/x976j>). The dataset described here represents three studies on the psychology of message communication: Study (1) how framing affects health communication messages using gain-versus-loss framing²; Study (2) cognitive reappraisal³; and Study (3) how self-determination theory can inform health messaging for social distancing uptake⁴. Participants either completed Loss-Gain Framing (Study 1) and Self-Determination (Study 3) (order counterbalanced), only the Self-Determination (Study 3) or Cognitive Reappraisal (Study 2) (see Figs. 1 and 2).

Loss-gain framing (Study 1). In the first study, participants read health excerpts that framed these messages behaviors as gains or losses, and we subsequently measured participants' intentions to follow guidelines to prevent COVID-19 transmission, attitudes towards COVID-19 prevention policies, propensity to seek additional information about COVID-19, and anxiety (using both self-report and behavioral measures)². This study was designed to examine the role of message framing in influencing compliance with the pandemic recommendations using gain-versus-loss framing. The gain-framed messages in this study highlighted the usefulness of compliance with the messages (e.g., there is so much to gain. If you practice these four steps, you can protect yourself and others), whereas the loss-framed messages spotlighted the negative effects of ignoring the recommendations (e.g., there is so much to lose. If you do not practice these four steps, you can endanger yourself and others)⁵. Research on the

[#]A full list of authors and their affiliations appears at the end of the paper.

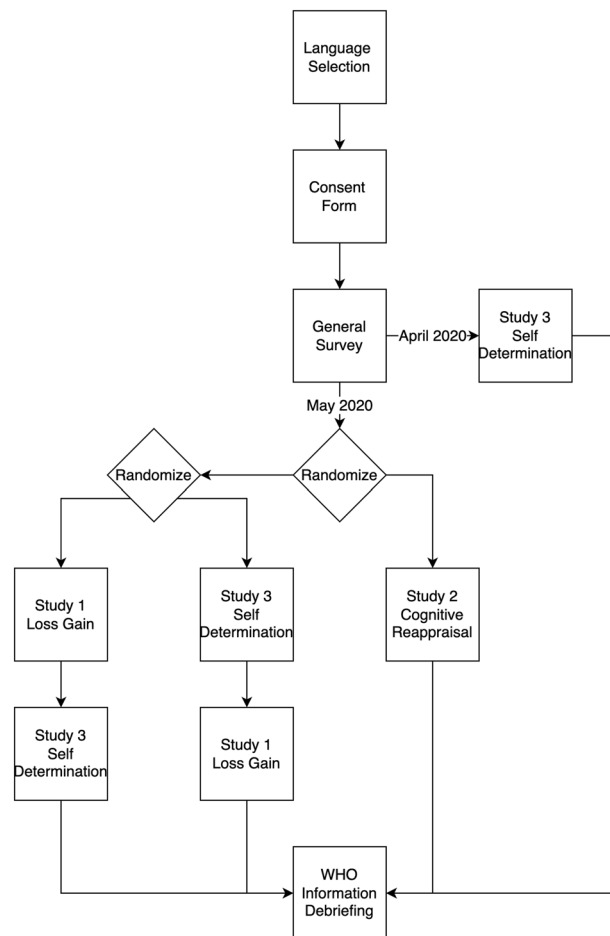


Fig. 1 Survey flow for the PSACR project. As shown in Fig. 2, participants were given one path through the study determined by the date they completed the study and randomization factors.

impact of message framing on emotion and behavior is critical⁶, and previous studies suggest that loss-framing elicits negative emotion⁷. This study extended previous research to measure the impact of framing on anxiety.

Summary of study findings. Loss-framed messages (as compared to gain-framed) increased participants' self-reported anxiety. On the contrary, there were no meaningful differences between gain framing and loss framing in effects on 1) behavioral intentions to follow COVID-19 prevention guidelines, (2) attitudes toward COVID-19 prevention policies, and 3) whether participants chose to seek more information about COVID-19. Crucially, most of these results were relatively consistent across 84 countries.

Cognitive reappraisal (Study 2). The second study focused on emotion regulation through cognitive reappraisal³. The COVID-19 pandemic has been shown to decrease positive emotions and psychological health and increase negative emotions^{8–10}. These emotional changes could potentially be mitigated by emotion regulation strategies. Cognitive reappraisal is one such strategy that encourages changes in the way one thinks about a situation in order to change the way one feels¹¹, and this study specifically used reconstrual and repurposing as reappraisal methods. Previous research has shown that participants engaging in cognitive reappraisal can increase resilience in a simple and effective manner¹², especially in comparison to other emotion strategies, such as emotion suppression¹³. Study 2 examined the effectiveness of reappraisal strategies to reduce negative emotions and increase positive ones regarding COVID-19 situations. Moreover, we explored whether cognitive reappraisals influence health behavioral intentions.

Summary of study findings. The two variations of reappraisal strategies tested in this study (reconstrual and repurposing) both reduced negative emotions and increased positive emotions related to COVID-19 situations compared to control conditions. Neither strategy affected health behavior intentions related to stay-at-home behaviors and hand washing behaviors. The two strategies had similar effects to one another.

Self-determination (Study 3). The third study examined motivations/intentions to participate in social distancing using self-determination theory as a framework to design messages that either induced individual autonomy through supportive messaging or pressured individuals through controlling messaging^{14,15}.

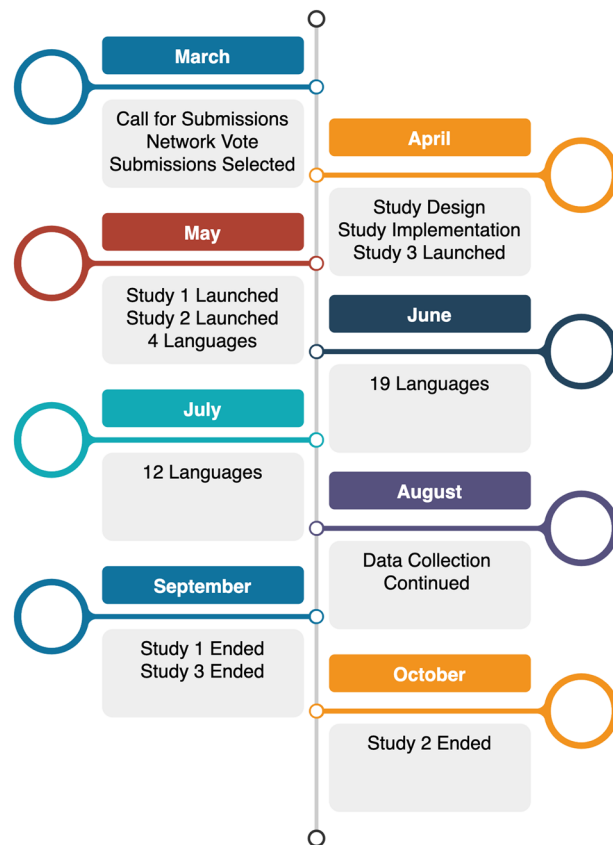


Fig. 2 Timeline for the PSACR project in 2020. In April, only the English version of the study was available for participants. In May, Hungarian, Dutch, Polish, and Portuguese were added to the study. In the next month, French, Macedonian, Swedish, Spanish, Farsi, Norwegian, Russian, Turkish, Bulgarian, Urdu, Czech, Greek, Italian, Japanese, Slovak, Arabic, Hebrew, Filipino, and Korean were launched. In July, Croatian, German, Yoruba, Armenian, Chinese, Serbian, Finnish, Romanian, Uzbek, Bengali, Slovenian, and Hebrew were included. Languages were generally launched with its dialect variants (e.g., Dutch and Dutch-Belgian).

Autonomy-supportive communication styles include information on perspective-taking, the rationale for changing behavior, and engaging an individual's autonomy of choice in a scenario¹⁶. Controlling communication styles use shame and blame to induce a change in behavior¹⁷. In general, autonomy-supportive messages have been shown to increase behavior change¹⁸, whereas controlling messages often lead to behaviors that are the opposite of what was intended^{19,20}. Study 3 examined the effects of autonomy-supportive versus controlling messages about social distancing on the quality of motivation, feelings of defiance, and behavioral intentions to engage in social distancing.

Summary of study findings. The controlling message increased controlled motivation for social distancing, a relatively ineffective form of motivation concerning avoiding shame and social consequences, relative to the control group who received no message. On the other hand, the autonomy-supportive message decreased feelings of defiance compared with the controlling message. Unexpectedly, neither autonomy-supportive or controlling messages influenced behavioral intentions, though existing motivations did, with autonomous motivation predicting greater long-term intentions, and controlled motivation predicting fewer long-term intentions to social distance.

Here, we present the aggregated data from all studies and from a health behavior survey assessing demographics and COVID-19 experience and local restrictions²¹. These data can be further merged with corresponding data using time and/or location information, potentially to track responses in tandem with COVID-19 rates (<https://data.humdata.org/dataset/oxford-covid-19-government-response-tracker>), vaccinations²², hospitalizations (<https://ourworldindata.org/coronavirus-data-explorer>), or other psychological variables (e.g., anxiety, depression; <https://www.nih.gov/news-events/news-releases/all-us-research-program-launches-covid-19-research-initiatives>). The dataset provides an array of untapped insights into human emotion, motivation, persuasion, and other topics that can be unlocked through secondary analyses (e.g., regional moderator analyses).

Methods

Survey flow. The PSACR project consisted of a general survey (i.e., consisting of health behaviors, COVID-19 information, and demographics) and the three studies described above (see the survey flow in Fig. 1). Data were collected online, and participants were able to complete the study from any internet-enabled device. First, participants were shown a landing page to select their language or regional variation of a language, with 44 languages included as options. Participants then read an informed consent form to familiarize themselves with the general

objectives of the study and indicate their consent to participate in the study (yes/no choice). The entire study was approved by the Institutional Review Board at Ashland University as the main research hub, and local approval was obtained from other research labs depending on individual institution requirements.

The participants were then shown a general survey, COVID-19 experience, and demographics survey designed by the PSACR admin team (described below). Participants were then randomly invited to complete either (a) Cognitive Reappraisal (Study 2), or (b) both the Loss-Gain Framing (Study 1) and Self-Determination (Study 3) studies in random order. However, a small portion of participants received only Study 3 (Self-Determination), as this study was deployed before the other two studies were ready (see Fig. 2 for a timeline of the project). Creating two survey flows (Study 1 and 3 versus Study 2) kept participant completion time to approximately 20–30 minutes across the entire survey as Study 2 took longer to complete than Study 1 and 3. Data collection for Loss-Gain Framing (Study 1) and Self-Determination (Study 3) ended before Cognitive Reappraisal (Study 2) for which data collection was continued to achieve the *a priori* determined sample size. A timeline for the different PSACR studies onsets and offsets is presented in Fig. 2. After completing the studies, participants were shown a debriefing about the studies that included information about the pandemic and World Health Organization (WHO) recommendations. All translations and materials can be found at <https://osf.io/gvw56/> and at <https://osf.io/s4hj2/>.

Translation. The translation team consisted of one lead coordinator, two assistant coordinators, one language specific coordinator, and translators within each language. The lead coordinator, along with the assistant coordinators, oversaw all languages organizing and connecting information between the study teams, translation teams, and implementation teams. The language coordinator worked with the individual translators for their target language, and approximately 268 individuals helped achieve the translations for this study. The translation process included three stages: forward translation, backward translation, and cultural adjustment. During forward translation, at least two translators worked together to translate each study from English to each target language. Separately, two translators then reversed this process by backward translating from each target language to English. Between these two stages, all inconsistencies were eliminated by discussion between team members. Last, the translated materials were sent to separate individuals for cultural adjustment. Cultural adjustment included wording tweaks for understanding within that culture. For example, several of the educational levels were modified based on the education system in the area that generally spoke the target language (see <https://osf.io/ca3ks> for a review of the translation process).

Study deployment. The study was implemented online using *formr* survey software²³ which enabled complex randomization and study tracking during the life of the project. The study can be reproduced using the Excel files for each language and the overall survey flow **psacr-pool.json** file (<https://osf.io/643aw/>) provided in the **formr** folder in the Open Science Framework (OSF) repository. *formr* software allows a researcher to import a survey flow through .json formatted files, and the exact questions and study design can be imported using Excel or Google Sheets files. Within each language folder, we have provided the consent form, the general survey, the Loss-Gain Framing survey (Study 1), the Cognitive Reappraisal survey (Study 2), the Self-Determination survey (Study 3), and the final WHO and debriefing information. Each language setup uses the same survey flow and therefore can be recreated using the provided .json survey flow and the relevant Excel files.

General survey. The general survey was designed to gather information about the participants' experiences with COVID-19 protocols and restrictions in their lives as well as demographic information. Participants first reported their health behaviors in response to the pandemic by indicating how many times they had left their homes in the past week, the reasons for leaving their home, their mask usage, hand washing, and coughing/sneezing actions. The next section covered COVID-19 restrictions and government responses, including current restrictions, ability to manage restrictions, and trust and satisfaction in government activities. Participants then indicated if they had been tested for COVID-19, were self-isolating for symptoms, their confidence about understanding and preventing COVID-19, and their worry over their physical and emotional well-being. The last section of the general survey covered participant demographics (age, gender, education, geopolitical region, nationality, state of residence for U.S. participants, and type of community), questions about how the participant was recruited into the survey, and questions about their household (number of members, socioeconomic status, and health conditions).

Loss-gain framing (Study 1). In this study, each participant was first presented with an overall description of the task, which was to express their opinions on various recommendations for mitigating COVID-19. Participants were randomized into two framing conditions about the steps one can take to meet COVID-19 guidelines. These two conditions were framed in either a gain perspective ("You have so much to gain by practicing these steps") or a loss perspective ("You have so much to lose by not following these steps"). Within the loss- and gain-framed conditions, the messages were written in three different ways, and participants were randomly assigned which version of the message to view. Participants then rated the likelihood to comply with these recommendations while the instructions were presented on the page. Next, they rated their feelings on government policies related to health, rated their emotions (i.e., anger, anxiety, fear) when considering these policies, and indicated if they wanted to learn more about WHO guidelines. Finally, participants were asked to complete a manipulation check about the information they had read to ensure they had paid attention during the study.

Cognitive reappraisal (Study 2). This study focused on determining if a cognitive reappraisal strategy would change the emotional responses to photos related to COVID-19. First, participants rated their emotions they were feeling "right now." For positive emotions, they indicated how hopeful, loved, peaceful, understood, and cared for they felt. For negative emotions, they indicated how annoyed, sad, angry, stressed, left out, and much

hate they felt. These emotions were randomly presented such that each person saw positive and negative emotion questions interspersed, beginning either with positive (i.e., positive, negative, positive, negative, etc.) or negative. The order of the questions was also randomized across participants.

At this point in the study, participants were randomized into one of four conditions: (1) reflecting: reflecting upon your thoughts and feelings about any situation can lead to different emotional responses; (2) rethinking: different ways of interpreting or thinking about any situation can lead to different emotions; (3) refocusing: finding something good in even the most challenging situations can lead to different emotional responses; and (4) a control condition that suggested participants respond as they naturally would. Participants were provided with instructions on how to implement these appraisals. Consequently, participants had four practice trials where each time they viewed a picture, rated their current affect/mood, and wrote a few sentences about how they implemented the appraisal with respect to the picture.

After completion of the practice trials, participants rated ten COVID-19 related pictures (e.g., person on a stretcher being taken out of an ambulance, grieving/worried relatives, etc.) followed by questions about how positive and negative they felt viewing the pictures. The pictures were selected by lead team of Study 2 by searching major news sources across Asia, Europe, and North America. These pictures were rated by the lead team on sadness/anxiety and whether they should use the pictures. The final selection of pictures received higher-than-average scores (on a 1–7 Likert scale), for both ratings. This section was followed by the original emotion questions presented at the beginning of the study, in the same randomized order as they had been previously seen. These questions were then adjusted to determine anticipated emotions (i.e., to what extent will you feel sad). Participants next answered questions about their positive habits, such as exercising, and negative habits, such as drinking and smoking. Last, participants were given a series of attention check questions to identify inattentive responding, along with a final question about their current emotional state relative to their emotional state at the beginning of the study.

Self-determination (Study 3). This study examined the COVID-19 recommendations for social-distancing across three randomly assigned conditions: (1) an autonomy-supportive message promoting personal agency and reflective choices, (2) a controlling message that was forceful and shaming, and 3) no message about social distancing. Each participant rated their current adherence with social distancing before receiving these messages. After the messages, participants rated their motivations to engage in social distancing, and how the messaging about social distancing made them feel. They then re-rated the original items about their social distancing intentions for the next week (i.e., how often will you see friends in the next week) and the next six months. At the end of the study, participants completed manipulation check items to ensure messages were experienced as supportive vs. pressuring.

Data processing. The complete data processing scripts from the study, along with annotations, can be found at <https://osf.io/gvw56/>. During the data collection phase of the studies, we tracked several indicators such as the current participant counts, timing, and other important factors in the study (e.g., the number of people in each language and group). The code for this tracking is presented in <https://osf.io/uzqdr/>, but those summary data were collected only for monitoring purposes during the study. The following data processing steps were taken on the raw data, and the final output can be found in the **raw_data** folder in the OSF repository. The raw data are stored separately by month in compressed zip files due to their large size and file storage limits. The processing steps included:

- 1) Eliminate duplicate rows. We collected data across multiple servers, and sometimes, the server posted the same participant data twice.
- 2) Creation of unique identifiers for each participant. One language of the study (Swedish) briefly did not include the appropriate code to enable creating unique identifiers. Therefore, these data were matched using other information embedded in the surveys and the unique identifier was filled in for these participants.
- 3) Removal of pilot data. We removed pilot testing responses from the dataset. These responses were identified by the start dates and times for each language separately.
- 4) Participant completion codes (e.g., unique subject identifiers created for reporting completion at the end of the study) were extracted from the raw data for researchers to check if their participants had completed the study.
- 5) Participant personal information (i.e., information that could be used to identify the participant, information for creating completion codes, emails or phone numbers for lottery participants) was excluded before uploading data into the **raw_data** folder.

Next, we transformed the raw data set to facilitate reuse of the data. The code for this stage can be found at <https://osf.io/shd9a/>. The following steps were performed to create a processed dataset, and the output from this data curation can be found in the **processed_data** folder online.

- 1) The information presented on the screen to the participant was included as a new column matching each item label from the *formr* worksheets. These labels were added as new columns in English and the language the study was displayed in.
- 2) The answer choice from a participant is included in numeric format (e.g., 1 = *Strongly Agree* to 5 = *Strongly Disagree*), and therefore, we included a new column with the original labels of the answer choice for items that had text labels. These labels are in English, even if the study was presented in a different language.
- 3) We created an overall participant file that has relevant information for participants across the entire study. This data file is described below.

- 4) We separated the data from each of the embedded studies (General Survey, Loss Gain, etc. described above) into independent data files, and these files are described below.
- 5) For the Cognitive Reappraisal study, we added a column that identified the exact items shown to participants. The original labels contain markdown and R code that generated the random order of items for each participant. The label column includes that code but can be difficult to interpret. Therefore, we recreated the order seen by each participant and merged that information into the Cognitive Reappraisal study file only.

Exclusion criteria. Each of the three individual studies used different exclusion criteria for their analyses (see technical validation description below). For the dataset described in this manuscript, no exclusion criteria were employed other than data curation described above. Therefore, the dataset includes all answers from any person that opened the survey, regardless of completion times or missing data.

Data Records

In this section, we describe the contents of the **processed_data** folder created from the data processing steps described above. All data is stored on OSF²¹. The **raw_data** folder contains files in a similar structure, which should be interpretable from the descriptions provided below. The main difference in these files is that the processed data include additional columns to disambiguate the information contained in each row.

Global participant data. The overall participant data consist of one participant information file and two dictionary files that detail the hand-coded processing of a free text response. The participant information file (**participants.csv**) is a comma separated text file that contains overall participant information and can be accessed at <https://osf.io/rjgwh/>. The information for each column of the participant file is found in Supplemental Table 1. The file included the geopolitical region from which the participant indicated they had taken the survey, along with the state (only for U.S. participants). This information was a free text response in the original survey. The **country_dictionary.xlsx** (<https://osf.io/8zv42/>) and **state_dictionary.xlsx** (<https://osf.io/5xbce/>) were used to merge geopolitical information from the overall general survey into this file. These files are in Excel format with two tabs. Each text answer was examined by two individuals and coded into geopolitical region codes and U.S. state names. In cases of disagreement, a third person arbitrated that decision. The first tab of each document includes the final chosen answer, and the second tab includes all coder responses for transparency. Supplemental Tables 2 and 3 include the metadata for each column. Figure 3 demonstrates the geopolitical region data and corresponding sample sizes from this processing.

Individual study data. The data are in long format wherein each line represents a single item that was shown to the participant, including submit buttons, notes, and hidden item information. All four data files have the same format (Supplemental Table 4). The general survey data can be found at <https://osf.io/37uca/> (**general_data.csv.zip**), the Loss-Gain Framing study at <https://osf.io/ctsrk/> (**study1_data.csv.zip**), the Cognitive Reappraisal study at <https://osf.io/bec2f/> (**study2_data.csv.zip**), and the Self-Determination study at <https://osf.io/aqkjh/> (**study3_data.csv.zip**). Each file is in comma separated text format, which was then compressed into a zip archive to fit within space limitations for OSF. As noted in Supplemental Table 4, the Cognitive Reappraisal study has one extra column of data due to the specific randomization involved in the study.

Table 1 includes information about completion rates and demographic measures for each study. The number of participants who started the survey is first reported. Each participant started with the general survey indicating a large portion of the participants generally opened the link to the study and then declined to continue (i.e., 73,223 participants opened the link while only 54,952 started the general survey). The number of participants who completed the last item in each section is also reported. In the next row, we present the number of participants who completed most of the items (>95%) on the survey as a secondary measure of the amount of usable data within each area. Depending on the secondary interest variables, more data may be available for each study. The number of languages and geopolitical regions represented in each study are found next in the table and the overall demographics can be found in Fig. 3. The gender breakdown is provided for each study, and most participants identified as female. Last, we provide information for technical validation described below.

Technical Validation

As participants entered the survey, they were randomized into one of two combinations of studies (Cognitive Reappraisal only or Loss-Gain Framing and Self-Determination combined). Within each of these studies, the experimental group manipulations were randomly assigned. Last, when noted above, study items were randomly ordered. The participants were blind to their conditions within the study. The technical programmers and study lead investigators had knowledge of the study conditions, but these were not known to most of the data collection teams. Samples were recruited from participant pools, paid participant websites, and social media. Research teams had no control over the allocation of participants to conditions. Samples were tracked through an online Shiny app (i.e., an R statistical software that creates online interactive applications²⁴) that displayed the total number of participants, separated by language and condition, to ensure appropriate randomization during the study deployment.

As shown in Table 1, the timing of the study completion may be used to ensure data quality by excluding participants who completed the study too quickly (as defined by a secondary analysis team). Each individual study also included manipulation checks to determine participant attentiveness. In the Loss-Gain Framing study, each participant was asked to indicate which framing message they had seen, and the number of participants indicated in Table 1 represents those who chose the correct answer based on their group assignment.

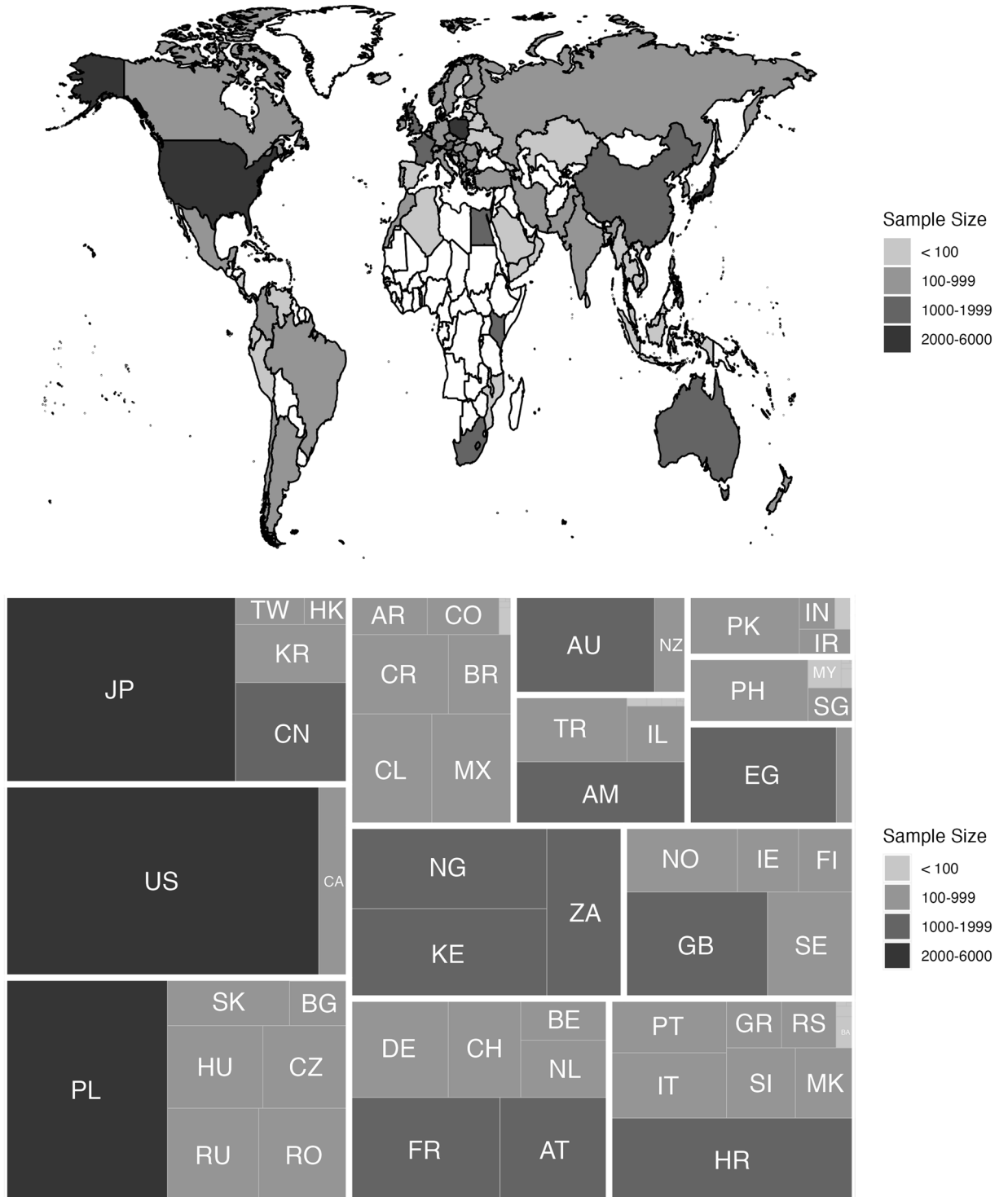


Fig. 3 The top panel includes a map of the countries/geopolitical locations from which data was collected for the PSACR project with corresponding sample size. The bottom panel includes a treemap of sample size by geopolitical region, and these values are grouped by UN subregion: Eastern Europe, Northern America, Eastern Asia, Western Europe, Southern Europe, Sub-Saharan Africa, Northern Europe, Latin American and the Caribbean, Western Asia, Australia and New Zealand, South-Eastern Asia, and Southern Asia (listed here largest to smallest). Cell size depicts relative sample size for each sub-region to the whole sample and within groups relative sample size.

The Cognitive-Reappraisal study had two manipulation check questions: participants had to pick a picture they had not previously seen and had to indicate the instructions they had been given to appraise those pictures. The values in Table 1 represent those who answered both questions correctly.

	General Study	Loss-Gain Framing Study 1	Cognitive Reappraisal Study 2	Self-Determination Study 3
Number Started Survey	54952	17682	27979	20033 ^a
Number Completed Last Item	48434 ^b	16775 ^c	21425	18806
Number Completed Most Items	48182	16799	21447 ^d	18999
Number Languages	44	44	43	44
Number Geopolitical Regions	110	89	89	90
Gender				
Female	30226	10300	13543	11602
Male	17277	6185	7575	6864
Prefer Not to Say/Other	557	187	219	223
Missing	374	103	88	117
<i>M</i> Minutes Completion	7.51	4.19	20.41	6.37
<i>SD</i> Minutes Completion	5.27	4.03	10.71	4.94
Manipulation Check Passed	NA	12049	13859 ^d	NA

Table 1. Completion and Demographic Information. *Note.* All items starting with Number Languages are calculated based on participants who completed the last item in the study. ^aThe published version of this study added a secondary dataset collected by the lead authors. That data is not included in our publication or these sample sizes. ^bWhen more participants complete the last item versus all items, this generally occurred because participants skipped many items or pages of the survey. ^cWhen more participants complete most items versus the last time, this generally occurred when people left the survey early or skipped the last page (either on purpose or because they clicked Continue twice too quickly). ^dThis study used two exclusions: participants had to answer at least one manipulation check item correctly (here, we present the number who answered both correctly), and they had to complete at least 50% of the study items (here, we present people who completed most items).

The Self-Determination study did not use a manipulation check with a “correct” answer, but rather examined if their manipulation changed the responses to questions presented at the end of the study (1 *Strongly Disagree* to 7 *Strongly Agree*). The autonomy group ($M = 4.11$, $SD = 1.70$) rated the instructions as providing more choices than the controlling message group ($M = 3.57$, $SD = 2.01$, $d = 0.29$) and the no message group ($M = 3.75$, $SD = 1.82$, $d = 0.20$), while the controlling message group rated the messages lower than the no message group ($d = 0.10$). A second question asked participants to rate the messages seen as trying to pressure people. The controlling messages group rated the item the highest ($M = 3.30$, $SD = 2.07$) in comparison to the autonomy message group ($M = 2.62$, $SD = 1.91$, $d = 0.34$) and the no message group ($M = 2.88$, $SD = 1.96$, $d = 0.21$). The no message group rated this item as higher than the autonomy group, $d = 0.14$. While these effect sizes are small, they indicate a pattern of responses that support participants’ responding to the manipulations presented for their group.

Code availability

All code can be found at <https://osf.io/gvw56/>.

Received: 9 June 2022; Accepted: 27 October 2022;

Published online: 11 February 2023

References

- Moshontz, H. *et al.* The Psychological Science Accelerator: Advancing Psychology Through a Distributed Collaborative Network. *Adv. Methods Pract. Psychol. Sci.* **1**, 501–515 (2018).
- Dorison, C. A. *et al.* In COVID-19 Health Messaging, Loss Framing Increases Anxiety with Little-to-No Concomitant Benefits: Experimental Evidence from 84 Countries. *Affect. Sci.* **3**, 577–602 (2022).
- Wang, K. *et al.* A multi-country test of brief reappraisal interventions on emotions during the COVID-19 pandemic. *Nat. Hum. Behav.* **5**, 1089–1110 (2021).
- Psychological Science Accelerator Self-Determination Theory Collaboration. *et al.* A global experiment on motivating social distancing during the COVID-19 pandemic. *Proc. Natl. Acad. Sci.* **119**, e2111091119 (2022).
- Meyerowitz, B. E. & Chaiken, S. The effect of message framing on breast self-examination attitudes, intentions, and behavior. *J. Pers. Soc. Psychol.* **52**, 500–510 (1987).
- Bavel, J. J. V. *et al.* Using social and behavioural science to support COVID-19 pandemic response. *Nat. Hum. Behav.* **4**, 460–471 (2020).
- Nabi, R. L. *et al.* Can Emotions Capture the Elusive Gain-Loss Framing Effect? A Meta-Analysis. *Commun. Res.* **47**, 1107–1130 (2020).
- Hou, Z., Du, F., Jiang, H., Zhou, X. & Lin, L. Assessment of Public Attention, Risk Perception, Emotional and Behavioural Responses to the COVID-19 Outbreak: Social Media Surveillance in China. *SSRN Electron. J.* <https://doi.org/10.2139/ssrn.3551338> (2020).
- Cullen, W., Gulati, G. & Kelly, B. D. Mental health in the COVID-19 pandemic. *QJM Int. J. Med.* **113**, 311–312 (2020).
- Yarrington, J. S. *et al.* Impact of the COVID-19 Pandemic on Mental Health among 157,213 Americans. *J. Affect. Disord.* **286**, 64–70 (2021).
- McRae, K. & Gross, J. J. Emotion regulation. *Emotion* **20**, 1–9 (2020).
- Tugade, M. M. & Fredrickson, B. L. Regulation of Positive Emotions: Emotion Regulation Strategies that Promote Resilience. *J. Happiness Stud.* **8**, 311–333 (2007).

13. Webb, T. L., Miles, E. & Sheeran, P. Dealing with feeling: A meta-analysis of the effectiveness of strategies derived from the process model of emotion regulation. *Psychol. Bull.* **138**, 775–808 (2012).
14. Deci, E. L. & Ryan, R. M. Self-determination theory: A macrotheory of human motivation, development, and health. *Can. Psychol.* **49**, 182–185 (2008).
15. Ryan, R. M. & Deci, E. L. *Self-Determination Theory: Basic Psychological Needs in Motivation, Development, and Wellbeing*. (Guilford Publications, 2017).
16. Su, Y.-L. & Reeve, J. A Meta-analysis of the Effectiveness of Intervention Programs Designed to Support Autonomy. *Educ. Psychol. Rev.* **23**, 159–188 (2011).
17. Bartholomew, K. J., Ntoumanis, N. & Thøgersen-Ntoumani, C. A review of controlling motivational strategies from a self-determination theory perspective: implications for sports coaches. *Int. Rev. Sport Exerc. Psychol.* **2**, 215–233 (2009).
18. Sheeran, P. *et al.* Self-determination theory interventions for health behavior change: Meta-analysis and meta-analytic structural equation modeling of randomized controlled trials. *J. Consult. Clin. Psychol.* **88**, 726–737 (2020).
19. Weinstein, N., Vansteenkiste, M. & Paulmann, S. Don't you say it that way! Experimental evidence that controlling voices elicit defiance. *J. Exp. Soc. Psychol.* **88**, 103949 (2020).
20. Legault, L., Gutsell, J. N. & Inzlicht, M. Ironic Effects of Antiprejudice Messages: How Motivational Interventions Can Reduce (but Also Increase) Prejudice. *Psychol. Sci.* **22**, 1472–1477 (2011).
21. Buchanan, E. *et al.* Data and Scripts. *Open Science Framework* <https://doi.org/10.17605/OSF.IO/GVW56> (2022).
22. Mathieu, E. *et al.* A global database of COVID-19 vaccinations. *Nat. Hum. Behav.* **5**, 947–953 (2021).
23. Arslan, R. C., Walther, M. P. & Tata, C. S. formr: A study framework allowing for automated feedback generation and complex longitudinal experience-sampling studies using R. *Behav. Res. Methods* **52**, 376–387 (2020).
24. Chang, W. *et al.* shiny: Web Application Framework for R. (2021).

Acknowledgements

We would like to acknowledge the contribution of multiple funders who contributed to the success of this project (all listed below). Additionally, the authors would like to thank others who contributed to the PSACR project, as not all contributed to this manuscript. A complete list of personnel can be found at <https://psyarxiv.com/x976j/>. Erin M. Buchanan: Amazon Web Services (AWS) Imagine Grant. Amélie Gourdon-Kanhukamwe: Internal funding from Kingston University. Hannah Moshontz: National Institute of Mental Health of the National Institutes of Health under Award Number T32MH018931. Adeyemi Adetula: PSA research grant (\$285.59) for the PSACR projects data collection. Dmitrii Dubrov: The work of Dmitrii Dubrov was supported within the framework of the Basic Research Program at HSE University, RF. Marek A. Vranka: Progres Q18/Cooperatio MCOM, Charles University. Yuki Yamada: JSPS KAKENHI Grant Numbers JP18K12015 and JP20H04581. Niklas Johannes: Huo Family Foundation. Tatsunori Ishii: JSPS (The Japan Society for the Promotion of Science) KAKENHI, Grant Number 19K14370. Małgorzata Kossowska: The Institute of Psychology, Jagiellonian University. Kevin van Schie: Rubicon grant (019.183SG.007) from the Netherlands Organization for Scientific Research (NWO). Robert M. Ross: Australian Research Council (DP180102384). Dmitry Grigoryev: The Russian data was collected within the framework of the HSE University Basic Research Program. Tripat Gill: Social Science and Humanities Research Council of Canada. Anthony J. Krafnick: Dominican University Faculty Support Grant. Jaime R. Silva: FONDECYT 1221538. William Jiménez-Leal: Vicerrectoria de Investigaciones, Uniandes. Agnieszka Sorokowska: Statutory funds of the Institute of Psychology, University of Wrocław. Adriana Julieth Olaya Torres: University of Desarrollo, Faculty of Psychology. Piotr Sorokowski: Study was founded by IDN Being Human Lab (University of Wrocław). Michal Misiak: IDN Being Human Lab (University of Wrocław). Krystian Barzykowski: was supported by the National Science Centre, Poland (2019/35/B/HS6/00528). Patrícia Arriaga: was supported by UID/PSI/03125/2019 from the Portuguese National Foundation for Science and Technology (FCT). Ivan Ropovik: PRIMUS/20/HUM/009 and NPO Systemic Risk Institute (LX22NPO5101). Andrej Findor: Agentúra na podporu výskumu a vývoja (Slovak Research and Development Agency) - APVV-17-0596. Matej Hruška: Agentúra na podporu výskumu a vývoja (Slovak Research and Development Agency) - APVV-17-0596. Matus Adamkovic: Slovak Research and Development Agency, project no. APVV-20-0319. Gabriel Baník: Slovak Research and Development Agency, project no. APVV-17-0418. Dawn L. Holford: is supported by a Horizon 2020 grant 964728 (JITSUVAX) from the European Commission and was supported by a United Kingdom Research and Innovation (UKRI) Research Fellowship grant ES/V011901/1. Rodrigo A. Cárcamo: ANID - Fondecyt 1201513. Sébastien Massoni: Program FUTURE LEADER of Lorraine Université d'Excellence within the program Investissements Avenir (ANR-15-IDEX-04-LUE) operated by the French National Research Agency. Alexandre Bran: Association Nationale de la Recherche Scientifique and Pacifica (CIFRE grant 2017/0245).

Author contributions

Writing - original draft: Erin M. Buchanan, Jeffrey M. Pavlicic, Savannah C. Lewis. Writing - review & editing: All authors. Visualization: Erin M. Buchanan, Peder Mortvedt Isager. Validation: Erin M. Buchanan. Formal Analysis: Erin M. Buchanan. Data curation: Erin M. Buchanan, Bastien Paris. Conceptualization, Methodology: Patrícia Arriaga, Nicholas A. Coles, Charles A. Dorison, Amit Goldenberg, James J. Gross, Blake Heller, Michael C. Mensink, Jeremy K. Miller, Ivan Ropovik, Alexander J. Rothman, Richard M. Ryan, Andrew G. Thomas, Ke Wang, Nicole Legate, Brian P. Gill, Vaughan W. Rees, Nancy Gibbs, Thuy-vy Thi Nguyen. Project Administration: Flavio Azevedo, Jennifer L. Beaudry, Julie E. Beshears, Erin M. Buchanan, Dr. Christopher R. Chartier, Nicholas A. Coles, Patrick S. Forscher, Amélie Gourdon-Kanhukamwe, Hans IJzerman, Carmel A. Levitan, Savannah C. Lewis, Peter R. Mallik, Shira Meir Drexler, Jeremy K. Miller, Hannah Moshontz, Bastien Paris, Maximilian A. Primbs, MohammadHasan Sharifian, Miguel Alejandro A. Silan, Jordan W. Suchow, Anna Louise Todsén. Resources: Balazs Aczel, Matus Adamkovic, Sylwia Adamus, Adeyemi Adetula, Gabriel Agboola Adetula, Arca Adigüzel, Bamikole Emmanuel AGESIN, Lina Pernilla Ahlgren, Afroja Ahmed, Handan Akkas, Sara G. Alves, Benedict G. Antazo, Jan Antfolk, Lisa Anton-Boicuk, Patrícia Arriaga, John Jamir Benzon R. Aruta, Adrian Dahl

Askelund, Flavio Azevedo, Soufian Azouaghe, Ekaterina Baklanova, Gabriel Baník, Krystian Barzykowski, Jozef Bavolar, Maja Becker, Julia Beitner, Jana B. Berkessel, Michał Białek, Olga Bialobrzeska, Ahmed Bokkour, Alexandre Bran, Tara Bulut Allred, Martin Čadek, Mariagrazia Capizzi, Nicola Cellini, Zhang Chen, Faith Chiu, Hu Chuan-Peng, Noga Cohen, Sami Çoksan, Vera Cubela Adoric, Wilson Cyrus-Lai, Johanna Czamanski-Cohen, Gabriela Czarnek, Ilker Dalgar, Anna Dalla Rosa, Lisa M. DeBruine, Ikhlal Djamai, Artur Domurat, Dmitrii Dubrov, Maksim Fedotov, Katarzyna Filip, Andrej Findor, Oscar J. Galindo-Caballero, Sandra J. Geiger, Biljana Gjoneska, Amélie Gourdon-Kanhukamwe, Caterina Grano, Agata Groyecka-Bernard, Nandor Hajdu, Paul H. P. Hanel, Mikayel Harutyunyan, Karlijn Hoyer, Evgeniya Hristova, Matej Hruška, Barbora Hubena, Keiko Ihaya, Peder Mortvedt Isager, Tatsunori Ishii, Teodor Jernsäter, Xiaoming Jiang, Niklas Johannes, Ondřej Kácha, Pavol Kačmár, Lada Kaliska, Julia Arhondis Kamburidis, Gwenaël Kaminski, Cemre Karaarslan, Alper Karababa, Angelos P. Kassianos, Ahmed KHAOUDI, Julita Kiełińska, Halil Emre Kocalar, Maria Koptjevskaja-Tamm, Max Korbmayer, Tatiana Korobova, Małgorzata Kossowska, Marta Kowal, Luca Kozma, Dajana Krupić, Dino Krupić, Yoshihiko Kunisato, Jonas R. Kunst, Murathan Kurfalı, Elizaveta Kushnir, Ranran Li, Gabriel Lins de Holanda Coelho, Efsio Manunta, Gabriela-Mariana Marcu, Marcel Martončík, Sébastien Massoni, Princess Lovella G. Maturan, Irem Metin-Orta, Jasna Milošević Đorđević, Giovanna Mioni, Aviv Mokady, Renan P. Monteiro, Sara Morales-Izquierdo, Farnaz Mosannenzadeh, Fany Muchembled, Mina Nedelcheva-Datsova, Gustav Nilsson, Raquel Oliveira, Clara Overkott, Asil Ali Özdoğru, Tamar Elise Paltrow, Myrto Pantazi, Bastien Paris, Mariola Paruzel-Czachura, Michał Parzuchowski, Ilse L. Pit, Sara Johanna Pöntinen, Razieh Pourafshari, Ekaterina Pronizius, Nikolay R. Rachev, Niv Reggev, Ulf-Dietrich Reips, Rafael R. Ribeiro, Marta Roczniewska, Ivan Ropovik, Susana Ruiz-Fernandez, Asli Saçaklı, Dušana Dušan Šakan, Anabela Caetano Santos, Nicolas Say, Vidar Schei, Nadya-Daniela Schmidt, Jana Schrötter, Daniela Serrato Alvarez, MohammadHasan Sharifian, Miguel Alejandro A. Silan, Claudio Singh Solorzano, Karolina Staniaszek, Stefan Stieger, Eva Štrukelj, Anna Studzinska, Naoyuki Sunami, Lilian Suter, Therese E. Sverdrup, Anna Szala, Barnabas Szasz, Christian K Tamnes, Anna Louise Todsén, Murat Tümer, Anum Urooj, Kevin van Schie, Martin R. Vasilev, Milica Vdovic, Diego Vega, Jeroen P.H. Verharen, Kevin Vezirian, Luc Vieira, Roosevelt Vilar, Jáchym Vintř, Leonhard Volz, Claudia C. von Bastian, Marek A. Vranka, Lara Warmelink, Minja Westerlund, Yuki Yamada, Ilya Zakharov, Danilo Zambrano, Janis H. Zickfeld, Andras N. Zsido, Barbara Žuro. Investigation: Christopher L. Aberson, Matus Adamkovic, Adeyemi Adetula, Arca Adigüzel, Reza Afhami, Elena Agadullina, Lina Pernilla Ahlgren, Afroja Ahmed, Nihan Albayrak-Aydemir, Inês A. T. Almeida, Sara G. Alves, Gulnaz Anjum, Michele Anne, Benedict G Antazo, Jan Antfolk, Nwadiogo Chisom Arinze, Azuka Ikechukwu Arinze, Patrícia Arriaga, John Jamir Benzon R. Aruta, Alexios Arvanitis, Adrian Dahl Askelund, Soufian Azouaghe, Hui Bai, Busra Bahar Balci, Tonia Ballantyne, Gabriel Baník, Krystian Barzykowski, Ernest Baskin, Sanja Batić Očovaj, Carlota Batres, Jozef Bavolar, Maja Becker, Behzad Behzadnia, Anabel Belaus, Jana B. Berkessel, Michał Białek, Olga Bialobrzeska, Gijsbert Bijlstra, Ahmed Bokkour, Jordane Boudesseul, Alexandre Bran, Erin M. Buchanan, Tara Bulut Allred, Carsten Bundt, Muhammad Mussaffa Butt, Robert J Calin-Jageman, Rodrigo A. Cárcamo, Joelle Carpentier, Nicola Cellini, Abdelilah Charyate, Zhang Chen, Faith Chiu, William J. Chopik, Weilun Chou, Sami Çoksan, W. Matthew Collins, Nadia Sarai Corral-Frias, Johanna Czamanski-Cohen, Shimrit Daches, Ilker Dalgar, Anna Dalla Rosa, William E. Davis, Anabel de la Rosa-Gómez, Barnaby James Wyld Dixon, Ikhlal Djamai, Artur Domurat, Hongfei Du, Dmitrii Dubrov, Celia Esteban-Serna, Luis Eudave, Gilad Feldman, Ana Ferreira, Andrej Findor, Paul A G Forbes, Francesco Foroni, Patrick S. Forscher, Martha Frias-Armenta, Cynthia H.Y. Fu, Tripat Gill, Biljana Gjoneska, Hendrik Godbersen, Amélie Gourdon-Kanhukamwe, Caterina Grano, Dmitry Grigoryev, Agata Groyecka-Bernard, Paul H. P. Hanel, Andree Hartanto, Mikayel Harutyunyan, Dawn L Holford, Thomas J. Hostler, Monika Hricova, Evgeniya Hristova, Matej Hruška, Keiko Ihaya, Hans IJzerman, Tatsunori Ishii, Bastian Jaeger, Allison P Janak, Steve M. J. Janssen, Lisa M. Jaremka, Teodor Jernsäter, Xiaoming Jiang, William Jiménez-Leal, Jennifer A. Joy-Gaba, Pavol Kačmár, Julia Arhondis Kamburidis, Gwenaël Kaminski, Heather Barry Kappes, Cemre Karaarslan, Alper Karababa, Maria Karekla, Angelos P. Kassianos, Ahmed KHAOUDI, Meetu Khosla, Julita Kiełińska, Natalia Kiselnikova, Halil Emre Kocalar, Monica A Koehn, Maria Koptjevskaja-Tamm, Małgorzata Kossowska, Marta Kowal, Luca Kozma, Anthony J. Krafnick, Franki Y. H. Kung, Yoshihiko Kunisato, Jonas R. Kunst, Elizaveta Kushnir, Anna O. Kuzminska, Claus Lamm, Ljiljana B. Lazarevic, David M. G. Lewis, Tiago J. S. Lima, Samuel Lins, Gabriel Lins de Holanda Coelho, Elkin O. Luis, PAULO MANUEL L. MACAPAGAL, Nadyanna M. Majeed, Mathi Manavalan, Efsio Manunta, Gabriela-Mariana Marcu, Marcel Martončík, Sébastien Massoni, Randy McCarthy, Joseph P. McFall, Michael C. Mensink, Jeremy K. Miller, Jasna Milošević Đorđević, Giovanna Mioni, Michał Misiak, Aviv Mokady, Renan P. Monteiro, David Moreau, Farnaz Mosannenzadeh, Rafał Muda, Erica D. Musser, Izuchukwu L.G. Ndukaihe, Mina Nedelcheva-Datsova, Gustav Nilsson, Nora L. Nock, Chris Noone, CHISOM ESTHER OGBONNAYA, Adriana Julieth Olaya Torres, Raquel Oliveira, Jonas K. Olofsson, Sandersan Onie, Thomas Ostermann, Asil Ali Özdoğru, Myrto Pantazi, Marietta Papadatou-Pastou, Mariola Paruzel-Czachura, Michał Parzuchowski, Jeffrey M. Pavlacic, Jennifer T Perillo, Gerit Pfuhl, Sara Johanna Pöntinen, Maximilian A. Primbs, Ekaterina Pronizius, Nikolay R. Rachev, Theda Radtke, Rima-Maria Rahal, Crystal Reeck, Niv Reggev, Ulf-Dietrich Reips, Dongning Ren, Matheus Fernando Felix Ribeiro, Marta Roczniewska, Jan Philipp Röer, Ivan Ropovik, Robert M. Ross, Susana Ruiz-Fernandez, Asli Saçaklı, Dušana Dušan Šakan, Anabela Caetano Santos, Nicolas Say, Vidar Schei, Kathleen Schmidt, Jana Schrötter, Martin Seehuus, Daniela Serrato Alvarez, Jaime R. Silva, Claudio Singh Solorzano, Miroslav Sirota, Agnieszka Sorokowska, Piotr Sorokowski, Jose A. Soto, Daniela Sousa, Ian D Stephen, Daniel Shafik Storage, Eva Štrukelj, Anna Studzinska, Naoyuki Sunami, Clare AM Sutherland, Therese E. Sverdrup, Paulina Szwed, Srinivasan Tatachari, María del Carmen Tejada R., Andrew G. Thomas, Mónica Camila Toro Venegas, Ulrich S. Tran, Giovanni A. Travaglino, Alexa M Tullett, Murat Tümer, Jan Urban, Anum Urooj, Jim Uttley, David C. Vaidis, Zahir Vally, Natalia Van Doren, Martin R. Vasilev, Leigh Ann Vaughn, Milica Vdovic, Diego Vega, Frederck Verbruggen, Kevin Vezirian, Luc Vieira, Roosevelt Vilar, Iris Vilares, Johannes K. Vilsmeier, Leonhard Volz,

Claudia C. von Bastian, Martin Voracek, Marek A. Vranka, Radoslaw B. Walczak, Minja Westerlund, Erin C. Westgate, Aaron L. Wichman, Megan L. Willis, Kelly Wolfe, Qinyu Xiao, Siu Kit Yeung, Karen Yu, Ilya Zakharov, Danilo Zambrano, Przemyslaw Marcin Zdybek, Ignazio Ziano, Janis H. Zickfeld, Saša Zorjan, Andras N. Zsido.

Competing interests

The authors declare no competing interests.

Additional information

Supplementary information The online version contains supplementary material available at <https://doi.org/10.1038/s41597-022-01811-7>.

Correspondence and requests for materials should be addressed to E.M.B.

Reprints and permissions information is available at www.nature.com/reprints.

Publisher's note Springer Nature remains neutral with regard to jurisdictional claims in published maps and institutional affiliations.



Open Access This article is licensed under a Creative Commons Attribution 4.0 International License, which permits use, sharing, adaptation, distribution and reproduction in any medium or format, as long as you give appropriate credit to the original author(s) and the source, provide a link to the Creative Commons license, and indicate if changes were made. The images or other third party material in this article are included in the article's Creative Commons license, unless indicated otherwise in a credit line to the material. If material is not included in the article's Creative Commons license and your intended use is not permitted by statutory regulation or exceeds the permitted use, you will need to obtain permission directly from the copyright holder. To view a copy of this license, visit <http://creativecommons.org/licenses/by/4.0/>.

© The Author(s) 2023

Erin M. Buchanan¹✉, Savannah C. Lewis², Bastien Paris³, Patrick S. Forscher⁴, Jeffrey M. Pavlic⁵, Julie E. Beshears⁶, Shira Meir Drexler⁷, Amélie Gourdon-Kanhukamwe^{8,9}, Peter R. Mallik¹⁰, Miguel Alejandro A. Silan¹¹, Jeremy K. Miller¹², Hans IJzerman^{13,14}, Hannah Moshontz¹⁵, Jennifer L. Beaudry¹⁶, Jordan W. Suchow¹⁷, Christopher R. Chartier², Nicholas A. Coles¹⁸, MohammadHasan Sharifian¹⁹, Anna Louise Todsén²⁰, Carmel A. Levitan²¹, Flávio Azevedo²², Nicole Legate²³, Blake Heller²⁴, Alexander J. Rothman²⁵, Charles A. Dorison²⁶, Brian P. Gill²⁷, Ke Wang²⁸, Vaughan W. Rees²⁹, Nancy Gibbs³⁰, Amit Goldenberg³¹, Thuy-vy Thi Nguyen³², James J. Gross³³, Gwenaél Kaminski³⁴, Claudia C. von Bastian³⁵, Mariola Paruzel-Czachura^{36,37}, Farnaz Mosannenzadeh³⁸, Soufian Azouaghe^{13,39}, Alexandre Bran⁴⁰, Susana Ruiz-Fernandez⁴¹, Anabela Caetano Santos^{42,43}, Niv Reggev⁴⁴, Janis H. Zickfeld⁴⁵, Handan Akkas⁴⁶, Myrto Pantazi⁴⁷, Ivan Ropovik^{48,49}, Max Korbmayer⁵⁰, Patricia Arriaga⁵¹, Biljana Gjoneska⁵², Lara Warmelink⁵³, Sara G. Alves⁵⁴, Gabriel Lins de Holanda Coelho⁵⁵, Stefan Stieger⁵⁶, Vidar Schei⁵⁷, Paul H. P. Hanel⁵⁸, Barnabas Szasz⁵⁹, Maksim Fedotov⁶⁰, Jan Antfolk⁶¹, Gabriela-Mariana Marcu⁶², Jana Schrötter⁶³, Jonas R. Kunst⁶⁴, Sandra J. Geiger⁶⁵, Adeyemi Adetula^{13,66}, Halil Emre Kocalar⁶⁷, Julita Kiełińska⁶⁸, Pavol Kačmár⁶⁹, Ahmed Bokkour⁷⁰, Oscar J. Galindo-Caballero⁷¹, Ikhlas Djamaï³⁹, Sara Johanna Pöntinen⁶¹, Bamikole Emmanuel AGESIN⁷², Teodor Jernsäther⁷³, Anum Urooj⁷⁴, Nikolay R. Rachev⁷⁵, Maria Koptjevskaja-Tamm⁷⁶, Murathan Kurfalı⁷⁶, Ilse L. Pit^{77,78}, Ranran Li⁷⁹, Sami Çoksan⁸⁰, Dmitrii Dubrov⁸¹, Tamar Elise Paltrow⁸², Gabriel Banik⁸³, Tatiana Korobova⁸⁴, Anna Studzinska⁸⁵, Xiaoming Jiang⁸⁶, John Jamir Benzon R. Aruta⁸⁷, Jáchym Vintř⁸⁸, Faith Chiu^{58,89}, Lada Kaliska⁹⁰, Jana B. Berkessel⁹¹, Murat Tümer⁹², Sara Morales-Izquierdo⁹³, Hu Chuan-Peng⁹⁴, Kevin Vezirian¹³, Anna Dalla Rosa⁹⁵, Olga Bialobrzeska⁹⁶, Martin R. Vasilev⁹⁷, Julia Beitner⁹⁸, Ondřej Kácha⁸⁸, Barbara Žuro^{99,100}, Minja Westerlund⁶¹, Mina Nedelcheva-Datsova⁷⁵, Andrej Findor¹⁰¹, Dajana Krupić¹⁰², Marta Kowal¹⁰³, Adrian Dahl Askelund¹⁰⁴, Raziéh Pourafshari¹⁰⁵, Jasna Milošević Đorđević¹⁰⁶, Nadya-Daniela Schmidt¹⁰⁷, Ekaterina Baklanova¹⁰⁸, Anna Szala¹⁰⁹, Ilya Zakharov¹¹⁰, Marek A. Vranka¹¹¹, Keiko Ihaya¹¹², Caterina Grano¹¹³, Nicola Cellini¹¹⁴, Michał Białek¹⁰³, Lisa Anton-Boicuk¹¹⁵, Ilker Dalgar¹¹⁶, Arca Adigüzel⁶⁷, Jeroen P. H. Verharen¹¹⁷, Princess Lovella G. Maturan¹¹⁸, Angelos P. Kassianos¹¹⁹, Raquel Oliveira¹²⁰, Martin Čadek¹²¹, Vera Cubela Adoric¹²², Asil Ali Özdoğru¹²³, Therese E. Sverdrup⁵⁷, Balázs Aczel¹²⁴, Danilo Zambrano¹²⁵, Afroja Ahmed¹²⁶, Christian K. Tamnes⁶⁴, Yuki Yamada¹²⁷, Leonhard Volz¹²⁸, Naoyuki Sunami¹²⁹, Lilian Suter¹³⁰, Luc Vieira¹³¹,

Agata Groyecka-Bernard¹⁰³, Julia Arhondis Kamburidis¹³², Ulf-Dietrich Reips¹³³, Mikayel Harutyunyan¹¹¹, Gabriel Agboola Adetula⁷², Tara Bulut Allred¹³⁴, Krystian Barzykowski¹³⁵, Benedict G Antazo¹³⁶, Andras N. Zsido¹³⁷, Dušana Dušan Šakan¹³⁸, Wilson Cyrus-Lai¹³⁹, Lina Pernilla Ahlgren⁶¹, Matej Hruška¹⁴⁰, Diego Vega¹⁴¹, Efsio Manunta¹⁴², Aviv Mokady¹⁴³, Mariagrazia Capizzi¹⁴⁴, Marcel Martončík^{145,146}, Nicolas Say¹⁴⁷, Katarzyna Filip¹³⁵, Roosevelt Vilar¹⁴⁸, Karolina Staniaszek¹⁴⁹, Milica Vdovic¹⁰⁶, Matus Adamkovic^{146,150}, Niklas Johannes¹⁵¹, Nandor Hajdu⁵⁹, Noga Cohen¹⁵², Clara Overkott¹⁵³, Dino Krupić¹⁵⁴, Barbora Hubena¹⁵⁵, Gustav Nilsson^{73,156,157}, Giovanna Mioni¹¹⁴, Claudio Singh Solorzano^{113,158}, Tatsunori Ishij¹⁵⁹, Zhang Chen¹⁶⁰, Elizaveta Kushnir¹⁶¹, Cemre Karaarslan¹⁶², Rafael R. Ribeiro¹⁶³, Ahmed Khaoudi⁷⁰, Małgorzata Kossowska¹⁶⁴, Jozef Bavolar⁶⁹, Karlijn Hoyer¹⁶⁵, Marta Roczniowska^{166,167}, Alper Karababa⁶⁷, Maja Becker¹⁴², Renan P. Monteiro¹⁶⁸, Yoshihiko Kunisato¹⁶⁹, Irem Metin-Orta¹⁷⁰, Sylwia Adamus¹³⁵, Luca Kozma^{137,171}, Gabriela Czarnek¹³⁵, Artur Domurat¹⁷², Eva Štrukelj¹⁷³, Daniela Serrato Alvarez¹²⁵, Michal Parzuchowski¹⁷⁴, Sébastien Massoni¹⁷⁵, Johanna Czamanski-Cohen¹⁷⁶, Ekaterina Pronizius¹⁷⁷, Fany Muchembled¹⁷⁸, Kevin van Schie^{179,180,181}, Aslı Saçaklı¹⁸², Evgeniya Hristova¹⁸³, Anna O. Kuzminska¹⁸⁴, Abdelilah Charyate^{185,186}, Gijsbert Bijlstra¹⁸⁷, Reza Afhami¹⁸⁸, Nadyanna M. Majeed¹⁸⁹, Erica D. Musser¹⁹⁰, Miroslav Sirota¹⁹¹, Robert M. Ross¹⁹², Siu Kit Yeung¹⁹³, Marietta Papadatou-Pastou¹⁹⁴, Francesco Foroni¹⁹⁵, Inês A. T. Almeida¹⁹⁶, Dmitry Grigoryev¹⁹⁷, David M. G. Lewis¹⁹⁸, Dawn L. Holford¹⁹⁹, Steve M. J. Janssen²⁰⁰, Srinivasan Tatachari²⁰¹, Carlota Batres²⁰², Jonas K. Olofsson⁷³, Shimrit Daches²⁰³, Anabel Belaus²⁰⁴, Gerit Pfuhl²⁰⁵, Nadia Sarai Corral-Frias²⁰⁶, Daniela Sousa²⁰⁷, Jan Philipp Röer²⁰⁸, Peder Mortvedt Isager²⁰⁹, Hendrik Godbersen⁴¹, Radosław B. Walczak²¹⁰, Natalia Van Doren²¹¹, Dongning Ren¹⁶⁵, Tripat Gill²¹², Martin Voracek¹⁷⁷, Lisa M. DeBruine²¹³, Michele Anne²⁰⁰, Sanja Batić Očovaj²¹⁴, Andrew G. Thomas²¹⁵, Alexios Arvanitis²¹⁶, Thomas Ostermann²¹⁷, Kelly Wolfe²¹⁸, Nwadiogo Chisom Arinze⁶⁶, Carsten Bundt⁶⁴, Claus Lamm¹⁷⁷, Robert J Calin-Jageman²¹⁹, William E. Davis²²⁰, Maria Karekla²²¹, Saša Zorjan²²², Lisa M. Jaremka²²³, Jim Uttley³⁵, Monika Hricova⁶⁹, Monica A Koehn²²⁴, Natalia Kiselnikova²²⁵, Hui Bai²²⁶, Anthony J. Krafnick²²⁷, Busra Bahar Balci²²⁸, Tonia Ballantyne²²⁹, Samuel Lins²³⁰, Zahir Vally²³¹, Celia Esteban-Serna²³², Kathleen Schmidt², Paulo Manuel L. Macapagal^{233,234}, Paulina Szwed²³⁵, Przemysław Marcin Zdybek²¹⁰, David Moreau²³⁶, W. Matthew Collins²³⁷, Jennifer A. Joy-Gaba²³⁸, Iris Vilares²³⁹, Ulrich S. Tran¹⁷⁷, Jordane Boudesseul^{240,241}, Nihan Albayrak-Aydemir^{242,243}, Barnaby James Wyld Dixson²⁴⁴, Jennifer T Perillo^{245,246}, Ana Ferreira¹⁹⁶, Erin C. Westgate²⁴⁷, Christopher L. Aberson²⁴⁸, Azuka Ikechukwu Arinze⁶⁶, Bastian Jaeger²⁴⁹, Muhammad Mussaffa Butt²⁵⁰, Jaime R. Silva²⁵¹, Daniel Shafik Storage²⁵², Allison P Janak²⁵³, William Jiménez-Leal²⁵⁴, Jose A. Soto²¹¹, Agnieszka Sorokowska²⁵⁵, Randy McCarthy²⁵⁶, Alexa M Tullett²⁵⁷, Martha Frias-Armenta²⁵⁸, Matheus Fernando Felix Ribeiro²⁵⁹, Andree Hartanto¹⁸⁹, Paul A. G. Forbes¹¹⁵, Megan L. Willis²⁶⁰, María del Carmen Tejada R²⁶¹, Adriana Julieth Olaya Torres²⁶², Ian D Stephen²⁶³, David C. Vaidis⁴⁰, Anabel de la Rosa-Gómez²⁶⁴, Karen Yu²⁶⁵, Clare A. M. Sutherland^{266,267}, Mathi Manavalan²⁵, Behzad Behzadnia²⁶⁸, Jan Urban²⁶⁹, Ernest Baskin²⁷⁰, Joseph P. McFall²⁷¹, Chisom Esther Ogbonnaya⁶⁶, Cynthia H. Y. Fu²⁷², Rima-Maria Rahal²⁷³, Izuchukwu L. G. Ndukaihe²⁷⁴, Thomas J. Hostler²⁷⁵, Heather Barry Kappes²⁴³, Piotr Sorokowski²⁵⁵, Meetu Khosla²⁷⁶, Ljiljana B. Lazarevic²⁷⁷, Luis Eudave²⁷⁸, Johannes K. Vilsmeier¹⁷⁷, Elkin O. Luis²⁷⁹, Rafał Muda²⁸⁰, Elena Agadullina¹⁹⁷, Rodrigo A. Cárcamo²⁸¹, Crystal Reeck²⁸², Gulnaz Anjum⁶⁴, Mónica Camila Toro Venegas²⁶¹, Michal Misiak^{283,284}, Richard M. Ryan¹⁹⁵, Nora L. Nock²⁸⁵, Giovanni A. Travaglino²⁸⁶, Michael C. Mensink²⁸⁷, Gilad Feldman²⁸⁸, Aaron L. Wichman²⁸⁹, Weilun Chou²⁹⁰, Ignazio Ziano²⁹¹, Martin Seehuus²⁹², William J. Chopik²⁹³, Franki Y. H. Kung²⁹⁴, Joelle Carpentier²⁹⁵, Leigh Ann Vaughn²⁹⁶, Hongfei Du²⁹⁷, Qinyu Xiao²⁹⁸, Tiago J. S. Lima²⁹⁹, Chris Noone³⁰⁰, Sandersan Onie^{301,302}, Frederick Verbruggen¹⁶⁰, Theda Radtke³⁰³ & Maximilian A. Primbs³⁸

¹Analytics, Harrisburg University of Science and Technology, Harrisburg, USA. ²Ashland University, Ashland, USA.³Université Grenoble Alpes, Grenoble, France. ⁴Busara Center for Behavioral Economics, Nairobi, Kenya.⁵Department of Psychology, University of Mississippi, Oxford, USA. ⁶Alliant International University, San Diego, USA.⁷Department of Neurology, Mauritius Hospital Meerbusch, Meerbusch, Germany. ⁸King's College, London, United Kingdom.⁹Kingston University, London, United Kingdom. ¹⁰Hubbard Decision Research, Glen Ellyn, USA. ¹¹Anney

Behavioral Science Lab, Université Lumière Lyon 2, Lyon, France. ¹²Willamette University, Salem, USA. ¹³LIP/PC2S, Université Grenoble Alpes, Grenoble, France. ¹⁴Institut Universitaire de France, Paris, France. ¹⁵University of Wisconsin - Madison, Madison, USA. ¹⁶Department of Psychological Sciences, Swinburne University of Technology, Melbourne, Australia. ¹⁷School of Business, Stevens Institute of Technology, Hoboken, USA. ¹⁸Center for the Study of Language and Information, Stanford University, Stanford, USA. ¹⁹Department of Psychology, University of Tehran, Tehran, Iran. ²⁰School of Psychology and Neuroscience, University of St Andrews, St Andrews, United Kingdom. ²¹Occidental College, Los Angeles, USA. ²²Department of Psychology, University of Cambridge, Cambridge, United Kingdom. ²³Illinois Institute of Technology, Chicago, USA. ²⁴Hobby School of Public Affairs, University of Houston, Houston, USA. ²⁵University of Minnesota, Minneapolis, USA. ²⁶Kellogg School of Management, Evanston, USA. ²⁷Mathematica, Princeton, USA. ²⁸Harvard University, Boston, USA. ²⁹Department of Social and Behavioral Sciences, Harvard T.H. Chan School of Public Health, Boston, USA. ³⁰Harvard Kennedy School, Boston, USA. ³¹Harvard Business School, Boston, USA. ³²Durham University, Durham, United Kingdom. ³³Department of Psychology, Stanford University, Stanford, CA, USA. ³⁴CLLE, Université de Toulouse, Toulouse, France. ³⁵University of Sheffield, Sheffield, United Kingdom. ³⁶Institute of Psychology, University of Silesia in Katowice, Katowice, Spain. ³⁷Penn Center for Neuroaesthetics, ChatLab, University of Pennsylvania, Philadelphia, US. ³⁸Radboud University, Nijmegen, Netherlands. ³⁹Department of Psychology, Mohammed V University, Rabat, Morocco. ⁴⁰Université Paris Cité, Paris, France. ⁴¹FOM University of Applied Sciences, Essen, Germany. ⁴²Department of Education, Social Sciences and Humanities, Faculty of Human Kinetics, University of Lisbon, Lisbon, Portugal. ⁴³Environmental Health Institute, Faculty of Medicine, University of Lisbon, Lisbon, Portugal. ⁴⁴Department of Psychology and School of Brain Sciences and Cognition, Ben Gurion University, Beersheba, Israel. ⁴⁵Department of Management, Aarhus University, Aarhus, Denmark. ⁴⁶MIS Department, Ankara Science University, Ankara, Turkey. ⁴⁷Center for Social and Cultural Psychology, Université libre de Bruxelles, Brussels, Belgium. ⁴⁸Faculty of Education, Institute for Research and Development of Education, Charles University, Prague, Czechia. ⁴⁹Faculty of Education, University of Presov, Presov, Slovakia. ⁵⁰Western Norway University of Applied Sciences, Bergen, Norway. ⁵¹CIS_Iscte - University Institute of Lisbon, Lisbon, Portugal. ⁵²Macedonian Academy of Sciences and Arts, Skopje, North Macedonia. ⁵³Lancaster University, Lancaster, United Kingdom. ⁵⁴Center for Psychology at University of Porto, Faculty of Psychology and Educational Sciences, University of Porto, Porto, Portugal. ⁵⁵University College Cork, Cork, Ireland. ⁵⁶Department of Psychology and Psychodynamics, Karl Landsteiner University of Health Sciences, Krems an der Donau, Austria. ⁵⁷Department of Strategy and Management, NHH Norwegian School of Economics, Bergen, Norway. ⁵⁸University of Essex, Essex, United Kingdom. ⁵⁹Institute of Psychology, ELTE - Eötvös Loránd University, Budapest, Hungary. ⁶⁰Institute for Linguistic Studies, Russian Academy of Sciences, Moscow, Russia. ⁶¹Faculty of Arts, Psychology and Theology, Åbo Akademi University, Turku, Finland. ⁶²Department of Psychology, "Lucian Blaga" University of Sibiu, Sibiu, Romania. ⁶³Department of Psychiatry, Medical Faculty, Pavol Jozef Šafárik University in Košice, Košice, Slovakia. ⁶⁴Department of Psychology, University of Oslo, Oslo, Norway. ⁶⁵Environmental Psychology, Department of Cognition, Emotion, and Methods, Faculty of Psychology, University of Vienna, Vienna, Austria. ⁶⁶Alex Ekwueme Federal University, Ndufu-Alike, Nigeria. ⁶⁷Department of Psychological Counseling and Guidance, Muğla Sıtkı Koçman University, Kotekli, Turkey. ⁶⁸Jan Długosz University in Czeszochowa, Czeszochowa, Poland. ⁶⁹Department of Psychology, Faculty of Arts, Pavol Jozef Šafárik University in Košice, Košice, Slovakia. ⁷⁰Mohammed V University, Rabat, Morocco. ⁷¹Facultad de Ciencias Sociales y Humanas, Universidad Manuela Beltrán, Bogota, Colombia. ⁷²Department of Pure & Applied Psychology, Adekunle Ajasin University, Akungba Akoko, Nigeria. ⁷³Department of Psychology, Stockholm University, Stockholm, Sweden. ⁷⁴La Trobe University, Melbourne, Australia. ⁷⁵Department of General, Experimental, Developmental, and Health Psychology, Sofia University St. Kliment Ohridski, Sofia, Bulgaria. ⁷⁶Department of Linguistics, Stockholm University, Stockholm, Sweden. ⁷⁷Institute of Human Sciences, University of Oxford, Oxford, United Kingdom. ⁷⁸Calleva Research Centre for Evolution and Human Sciences, Magdalen College, Oxford, United Kingdom. ⁷⁹Vrije Universiteit Amsterdam, Amsterdam, Netherlands. ⁸⁰Department of Psychology, Erzurum Technical University, Erzurum, Turkey. ⁸¹Higher School of Economics, National Research University, Moscow, Russian Federation. ⁸²Independent Scientist, Krakow, USA. ⁸³Institute of Psychology, University of Presov, Presov, Slovakia. ⁸⁴London Gates Education Group, Riga, Russian Federation. ⁸⁵Humanities Department, Icam Toulouse, Toulouse, France. ⁸⁶Institute of Linguistics, Shanghai International Studies University, Shanghai, China. ⁸⁷Department of Psychology, School of Medical and Life Sciences, Sunway University, Subang Jaya, Malaysia. ⁸⁸Green Dock, Hostovice, Czech Republic. ⁸⁹English Language and Linguistics, University of Glasgow, Glasgow, Scotland. ⁹⁰Matej Bel University in Banská Bystrica, Banská Bystrica, Slovakia. ⁹¹University of Mannheim, Mannheim, Germany. ⁹²Independent Scientist, Istanbul, Turkey. ⁹³Department of Psychology, University of Warwick, Warwick, United Kingdom. ⁹⁴School of Psychology, Nanjing Normal University, Nanjing, China. ⁹⁵Department of Philosophy, Sociology, Education and Applied Psychology, University of Padova, Padova, Italy. ⁹⁶SWPS University of Social Sciences and Humanities, Warsaw, Poland. ⁹⁷Department of Psychology, Bournemouth University, Poole, United Kingdom. ⁹⁸Department of Psychology, Goethe University Frankfurt, Frankfurt, Germany. ⁹⁹Institute of Psychology, Dublin, Ireland. ¹⁰⁰Faculty of Humanities and Social Sciences, University of Osijek, Osijek, Croatia. ¹⁰¹Faculty of Social and Economic Sciences, Comenius University in Bratislava, Bratislava, Slovakia. ¹⁰²Centre for Psychological Counselling and Research Norvel, Osijek, Croatia. ¹⁰³Institute of Psychology, University of Wrocław, Wrocław, Poland. ¹⁰⁴Lovisenberg Diaconal Hospital, Nic Waals Institute, Oslo, Norway. ¹⁰⁵University of Tehran, Tehran, Iran. ¹⁰⁶Faculty of Media and Communication, Singidunum University, Belgrade, Serbia. ¹⁰⁷Institute of Psychology, University of Hildesheim, Hildesheim, Germany. ¹⁰⁸Lomonosov Moscow State University, Moscow, Russia. ¹⁰⁹Centre of Language Evolution Studies, Nicolaus Copernicus University in Toruń, Toruń, Poland. ¹¹⁰Psychological Institute of Russian Academy of Education, Moscow, Russia. ¹¹¹Charles University, Prague, Czech Republic. ¹¹²Fukuoka Institute of Technology, Fukuoka, Japan. ¹¹³Department of Psychology, Sapienza University of Rome, Rome, Italy. ¹¹⁴Department of General Psychology, University of Padova, Padova, Italy. ¹¹⁵University of Vienna, Vienna, Austria. ¹¹⁶Ankara Medipol University, Altındağ/Ankara, Turkey. ¹¹⁷Department of Molecular and Cell Biology, University of California Berkeley, Berkeley, USA. ¹¹⁸Department of Psychology, University of the Philippines Diliman, Quezon City,

Philippines. ¹¹⁹Department of Nursing, Cyprus University of Technology, Limassol, Cyprus. ¹²⁰Iscte-Instituto Universitário de Lisboa (Cis-Iul), Lisboa, Portugal. ¹²¹Leeds Beckett University, Leeds, United Kingdom. ¹²²University of Zadar, Zadar, Croatia. ¹²³Üsküdar University, İstanbul, Turkey. ¹²⁴ELTE - Eotvos Lorand University, Budapest, Hungary. ¹²⁵Facultad de Psicología, Fundación Universitaria Konrad Lorenz, Bogotá, Colombia. ¹²⁶Global MINDS, University of Limerick, Limerick, Ireland. ¹²⁷Kyushu University, Fukuoka, Japan. ¹²⁸University of Amsterdam, Amsterdam, Netherlands. ¹²⁹Institute for Globally Distributed Open Research and Education (IGDORE), Stockholm, Sweden. ¹³⁰Zurich University of Applied Sciences, School of Applied Psychology, Zurich, Switzerland. ¹³¹University of Paris, Paris, France. ¹³²Sofia University "St. Kliment Ohridsky", Sofia, Bulgaria. ¹³³Department of Psychology, University of Konstanz, Konstanz, Germany. ¹³⁴Laboratory for Research of Individual Differences, Faculty of Philosophy, University of Belgrade, Belgrade, Serbia. ¹³⁵Institute of Psychology, Jagiellonian University, Krakow, Poland. ¹³⁶Jose Rizal University, Metro Manila, Philippines. ¹³⁷Institute of Psychology, University of Pécs, Pécs, Hungary. ¹³⁸Department of Psychology, Faculty for Legal and Business Studies Dr Lazar Vrkatić, Novi Sad, Serbia. ¹³⁹INSEAD, Singapore, Singapore. ¹⁴⁰Faculty of Social and Economic Sciences, Institute of European Studies and International Relations, Comenius University, Bratislava, Slovakia. ¹⁴¹Universidad Latina de Costa Rica, San Pedro, Costa Rica. ¹⁴²CLLE, CNRS, Université de Toulouse, Toulouse, France. ¹⁴³Department of Psychology, Ben Gurion University, Beersheba, Israel. ¹⁴⁴Department of Experimental Psychology, University of Granada, Granada, Spain. ¹⁴⁵Faculty of Arts, University of Presov, Presov, Slovakia. ¹⁴⁶Institute of Social Sciences CSPS, Slovak Academy of Sciences, Bratislava, Slovakia. ¹⁴⁷Prague University of Economics and Business, Praha, Czechia. ¹⁴⁸Universitas Sebelas Maret, Kota Surakarta, Indonesia. ¹⁴⁹Independent Scientist, Krakow, Poland. ¹⁵⁰Faculty of Humanities and Social Sciences, University of Jyväskylä, Jyväskylä, Finland. ¹⁵¹University of Oxford, Oxford, UK. ¹⁵²Department of Special Education and The Edmond J. Safra Brain Research Center for the Study of Learning Disabilities, University of Haifa, Haifa, Israel. ¹⁵³Department of Psychology, University of Zurich, Zurich, Switzerland. ¹⁵⁴University of Osijek, Osijek, Croatia. ¹⁵⁵Independent Researcher, Praha, Czech Republic. ¹⁵⁶Department of Clinical Neuroscience, Karolinska Institutet, Solna, Sweden. ¹⁵⁷Swedish National Data Service, Gothenburg University, Gothenburg, Sweden. ¹⁵⁸Laboratory of Alzheimer's Neuroimaging and Epidemiology, IRCCS Istituto Centro San Giovanni di Dio Fatebenefratelli, Brescia, Italy. ¹⁵⁹Department of Psychology, Faculty of Integrated Arts & Social Science, Japan Women's University, Tokyo, Japan. ¹⁶⁰Department of Experimental Psychology, Ghent University, Ghent, Belgium. ¹⁶¹Södertörn University, Huddinge, Sweden. ¹⁶²Independent Scientist, Ankara, Turkey. ¹⁶³ISCTE-University Institute of Lisbon, Lisboa, Portugal. ¹⁶⁴Faculty of Philosophy, Institute of Psychology, Jagiellonian University, Warszawa, Poland. ¹⁶⁵Tilburg University, Tilburg, The Netherlands. ¹⁶⁶SWPS University of Social Sciences and Humanities, Sopot, Poland. ¹⁶⁷Karolinska Institute, Stockholm, Sweden. ¹⁶⁸Federal University of Paraíba, Paraíba, Brazil. ¹⁶⁹Department of Psychology, Senshu University, Toyko, Japan. ¹⁷⁰Department of Psychology, Atilim University, Ankara, Turkey. ¹⁷¹School of Education and Social Sciences, Division of Psychology, University of the West of Scotland, Paisley, Scotland. ¹⁷²University of Silesia in Katowice, Katowice, Poland. ¹⁷³Sapienza University of Rome, Rome, Slovenia. ¹⁷⁴Center for Research on Cognition and Behavior, SWPS University of Social Sciences and Humanities, Sopot, Poland. ¹⁷⁵CNRS, Université de Lorraine, Nancy, France. ¹⁷⁶The School of Creative Arts Therapies, Faculty of Social Welfare and Health Sciences, University of Haifa, Haifa, Israel. ¹⁷⁷Department of Cognition, Emotion and Methods in Psychology, Faculty of Psychology, University of Vienna, Vienna, Austria. ¹⁷⁸Departamento de Idiomas, Campus Sonora Norte, Tecnológico de Monterrey, Hermosillo, México. ¹⁷⁹Medical and Clinical Psychology, Tilburg University, Tilburg, The Netherlands. ¹⁸⁰Department of Psychology, Education and Child Studies, Erasmus School of Social and Behavioural Sciences, Erasmus University, Rotterdam, The Netherlands. ¹⁸¹MRC Cognition and Brain Sciences Unit, University of Cambridge, Rotterdam, United Kingdom. ¹⁸²Independent Researcher, İstanbul, Turkey. ¹⁸³Cognitive Science and Psychology Department, New Bulgarian University, Sofia, Bulgaria. ¹⁸⁴Faculty of Management, University of Warsaw, Warsaw, Poland. ¹⁸⁵Ibn Tofail University (ESEF), Kenitra, Morocco. ¹⁸⁶BETA, Université de Strasbourg, Strasbourg, France. ¹⁸⁷Behavioural Science Institute, Radboud University, Nijmegen, The Netherlands. ¹⁸⁸Tarbiat Modares University, Tehran, Iran. ¹⁸⁹Singapore Management University, Singapore, Singapore. ¹⁹⁰Psychology Department, Florida International University, Miami, USA. ¹⁹¹Department of Psychology, University of Essex, Colchester, United Kingdom. ¹⁹²School of Psychological Sciences, Macquarie University, Sydney, Australia. ¹⁹³Chinese University of Hong Kong, Hong Kong S.A.R., China. ¹⁹⁴National and Kapodistrian University of Athens, Athens, Greece. ¹⁹⁵Australian Catholic University, North Sydney, New South Wales, Australia. ¹⁹⁶Faculty of Medicine FMUC, Institute of Nuclear Sciences Applied to Health ICNAS, Coimbra Institute for Biomedical Imaging and Translational Research CIBIT, University of Coimbra, Coimbra, Portugal. ¹⁹⁷HSE University, Moscow, Russia. ¹⁹⁸Discipline of Psychology, Centre for Healthy Ageing, Health Futures Institute, Murdoch University, Perth, Australia. ¹⁹⁹University of Bristol, Bristol, United Kingdom. ²⁰⁰University of Nottingham Malaysia, Semenyih, Malaysia. ²⁰¹T A Pai Management Institute, Manipal Academy of Higher Education, Manipal, India. ²⁰²Franklin and Marshall College, Lancaster, USA. ²⁰³Psychology Department, Bar Ilan University, Ramat Gan, Israel. ²⁰⁴Instituto de Investigaciones Psicológicas (IIPsi), Consejo Nacional de Investigaciones Científicas y Técnicas, Universidad Nacional de Córdoba, Córdoba, Argentina. ²⁰⁵Department of Psychology, Norwegian University of Science and Technology, Trondheim, Norway. ²⁰⁶University of Sonora, Sonora, Mexico. ²⁰⁷Institute of Nuclear Sciences Applied to Health ICNAS, Coimbra Institute for Biomedical Imaging and Translational Research CIBIT, University of Coimbra, Coimbra, Portugal. ²⁰⁸Witten/Herdecke University, Witten, Germany. ²⁰⁹Oslo New University College, Oslo, Norway. ²¹⁰University of Opole, Institute of Psychology, Opole, Poland. ²¹¹The Pennsylvania State University, State College, USA. ²¹²Lazaridis School of Business and Economics, Wilfrid Laurier University, Waterloo, Canada. ²¹³School of Psychology & Neuroscience, University of Glasgow, Glasgow, Scotland, UK. ²¹⁴Faculty of Law and Business Studies Dr Lazar Vrkatić, Novi Sad, Serbia. ²¹⁵School of Psychology, Swansea University, Swansea, United Kingdom. ²¹⁶Department of Psychology, University of Crete, Rethymno, Greece. ²¹⁷Department for Psychology and Psychotherapy, Witten/Herdecke University, Witten, Germany. ²¹⁸University of Edinburgh, Edinburgh, United Kingdom. ²¹⁹Neuroscience Program, Dominican University, River Forest, USA. ²²⁰Wittenberg University, Springfield, USA. ²²¹University of Cyprus, Nicosia, Cyprus. ²²²Department of Psychology, University of Maribor, Maribor, Slovenia. ²²³University of

Delaware, Newark, USA. ²²⁴Discipline of Psychology, Faculty of Health, University of Canberra, Canberra, Australia. ²²⁵Educational Centre "Psychodemia", Moscow, Russian Federation. ²²⁶Stanford University, Stanford, USA. ²²⁷Psychology Department, Dominican University, River Forest, USA. ²²⁸Samsun University Department of Psychology, Samsun, Turkey. ²²⁹Indiana University Pennsylvania, Indiana, USA. ²³⁰University of Porto, Porto, Portugal. ²³¹Department of Clinical Psychology, United Arab Emirates University, Al Ain, United Arab Emirates. ²³²Division of Psychology and Language Sciences, University College London, London, United Kingdom. ²³³Social Science Department, College of Liberal Arts, Technological University of the Philippines, Manila, Philippines. ²³⁴School of Psychology, Arellano University, Metro Manila, Philippines. ²³⁵Jagiellonian University, Krakow, Poland. ²³⁶University of Auckland, Auckland, New Zealand. ²³⁷Nova Southeastern University, Broward County, USA. ²³⁸Virginia Commonwealth University, Richmond, USA. ²³⁹Department of Psychology, University of Minnesota, Minneapolis, USA. ²⁴⁰Laboratoire Parisien de Psychologie Sociale, Université Paris Nanterre, Nanterre, France. ²⁴¹Grupo de Investigación en Comunicación y Salud, Instituto de Investigación Científica, Universidad de Lima, Lima, Peru. ²⁴²Open University, Milton Keynes, United Kingdom. ²⁴³London School of Economics and Political Science, London, United Kingdom. ²⁴⁴School of Health and Behavioural Sciences, University of the Sunshine Coast, Petrie, QLD, Petrie, Australia. ²⁴⁵Department of Psychology, Indiana University of Pennsylvania, Indiana, USA. ²⁴⁶Division of Community Behavioral Health, Department of Psychiatry and Behavioral Sciences, University of New Mexico Health Sciences Center, Albuquerque, USA. ²⁴⁷University of Florida, Gainesville, USA. ²⁴⁸Cal Poly Humboldt, Humboldt, USA. ²⁴⁹Department of Experimental and Applied Psychology, Vrije Universiteit Amsterdam, Amsterdam, The Netherlands. ²⁵⁰Department of Psychology, Government College University, Lahore, Pakistan. ²⁵¹Universidad del Desarrollo, Concepcion, Chile. ²⁵²Department of Psychology, University of Denver, Denver, USA. ²⁵³Yale School of Public Health, Department of Chronic Disease Epidemiology, New Haven, USA. ²⁵⁴Psychology Department, Universidad de los Andes, Bogota, Colombia. ²⁵⁵Institute of Psychology, University of Wrocław, Wrocław, Poland. ²⁵⁶Northern Illinois University, Dekalb, USA. ²⁵⁷University of Alabama, Tuscaloosa, USA. ²⁵⁸Universidad de Sonora, Hermosillo, México. ²⁵⁹Universidade de Brasília, Brasília, Brasil. ²⁶⁰School of Behavioural and Health Sciences, Australian Catholic University, New South Wales, Australia. ²⁶¹Facultad de Psicología, Universidad del Desarrollo, Concepcion, Chile. ²⁶²Faculty of Psychology, University of Desarrollo, Desarrollo, Chile. ²⁶³NTU Psychology, Nottingham Trent University, Nottingham, United Kingdom. ²⁶⁴Faculty of Higher Studies Iztacala, National Autonomous University of Mexico, Mexico City, Mexico. ²⁶⁵Department of Psychology, Sewanee: The University of the South, Sewanee, USA. ²⁶⁶University of Aberdeen, Aberdeen, Scotland. ²⁶⁷University of Western Australia, Crawley, Australia. ²⁶⁸University of Tabriz, Tabriz, Iran. ²⁶⁹Environment Centre, Charles University, Prague, Czech Republic. ²⁷⁰Saint Joseph's University, Philadelphia, USA. ²⁷¹State University of New York at Fredonia, Fredonia, USA. ²⁷²School of Psychology, University of East London, London, UK. ²⁷³Max Planck Institute for Research on Collective Goods, Bonn, Germany. ²⁷⁴Department of Psychology, Alex Ekwueme Federal University, Ndufu-Alike, Nigeria. ²⁷⁵Manchester Metropolitan University, Manchester, United Kingdom. ²⁷⁶Department of Psychology, Daulat Ram College, University of Delhi, Delhi, India. ²⁷⁷Faculty of Philosophy, University of Belgrade, Belgrade, Serbia. ²⁷⁸School of Education and Psychology, University of Navarra, Pamplona, Spain. ²⁷⁹Psychological Processes in Education and Health Group, School of Education and Psychology, University of Navarra, Pamplona, Spain. ²⁸⁰Faculty of Economics, Maria Curie-Sklodowska University, Lublin, Poland. ²⁸¹Facultad de Psicología, Universidad San Sebastián, Valdivia, Chile. ²⁸²Department of Marketing, Fox School of Business, Temple University, Philadelphia, USA. ²⁸³IDN Being Human Lab, University of Wrocław, Wrocław, Poland. ²⁸⁴School of Anthropology & Museum Ethnography, University of Oxford, Oxford, United Kingdom. ²⁸⁵Department of Population and Quantitative Health Sciences, Case Western Reserve University, Cleveland, USA. ²⁸⁶Department of Law and Criminology, Royal Holloway, University of London, London, UK. ²⁸⁷University of Wisconsin-Stout, Menomonie, USA. ²⁸⁸University of Hong Kong, Hong Kong S.A.R., China. ²⁸⁹Western Kentucky University, Bowling Green, USA. ²⁹⁰Fo Guang University, Jiaoxi, Taiwan. ²⁹¹Grenoble Ecole de Management, Grenoble, France. ²⁹²Middlebury College, Middlebury, USA. ²⁹³Michigan State University, East Lansing, USA. ²⁹⁴Purdue University, West Lafayette, USA. ²⁹⁵Department of Organization and Human Resources, UQAM, Montreal, Canada. ²⁹⁶Psychology Department, Ithaca College, Ithaca, USA. ²⁹⁷Institute of Advanced Studies in Humanities and Social Sciences, Beijing Normal University, Zhuhai, China. ²⁹⁸Department of Psychology, University of Hong Kong, Hong Kong S.A.R., China. ²⁹⁹Department of Social and Work Psychology, University of Brasília, Brasília, Brazil. ³⁰⁰University of Galway, Galway, Ireland. ³⁰¹Black Dog Institute, UNSW Sydney, Sydney, Australia. ³⁰²Emotional Health for All Foundation, Jakarta, Indonesia. ³⁰³University of Wuppertal, Wuppertal, Germany. ✉e-mail: ebuchanan@harrisburgu.edu