



Universiteit  
Leiden  
The Netherlands

**Erratum: "Molecules with ALMA at Planet-forming Scales (MAPS). III. Characteristics of radial chemical substructures" (2021, ApJS, 257, 3)**

Law, C.J.; Loomis, R.A.; Teague, R.; Öberg, K.I.; Czekala, I.; Andrews, S.M.; ... ; Zhang, K.

**Citation**

Law, C. J., Loomis, R. A., Teague, R., Öberg, K. I., Czekala, I., Andrews, S. M., ... Zhang, K. (2022). Erratum: "Molecules with ALMA at Planet-forming Scales (MAPS). III. Characteristics of radial chemical substructures" (2021, ApJS, 257, 3). *The Astrophysical Journal Supplement Series*, 260(1). doi:10.3847/1538-4365/ac69e9

Version: Publisher's Version  
License: [Creative Commons CC BY 4.0 license](#)  
Downloaded from: <https://hdl.handle.net/1887/3562704>

**Note:** To cite this publication please use the final published version (if applicable).



## Erratum: “Molecules with ALMA at Planet-forming Scales (MAPS). III. Characteristics of Radial Chemical Substructures” (2021, ApJS, 257, 3)

Charles J. Law<sup>1</sup> , Ryan A. Loomis<sup>2</sup> , Richard Teague<sup>1</sup> , Karin I. Öberg<sup>1</sup> , Ian Czekala<sup>3,4,5,6,7,24</sup> , Sean M. Andrews<sup>1</sup> , Jane Huang<sup>1,8,24</sup> , Yuri Aikawa<sup>9</sup> , Felipe Alarcón<sup>8</sup> , Jaehan Bae<sup>10,11,24</sup> , Edwin A. Bergin<sup>8</sup> , Jennifer B. Bergner<sup>12,24</sup> , Yann Boehler<sup>13</sup> , Alice S. Booth<sup>14,15</sup> , Arthur D. Bosman<sup>8</sup> , Jenny K. Calahan<sup>8</sup> , Gianni Cataldi<sup>9,16</sup> , L. Ilseore Cleeves<sup>17</sup> , Kenji Furuya<sup>16</sup> , Viviana V. Guzmán<sup>18</sup> , John D. Ilee<sup>15</sup> , Romane Le Gal<sup>1,13,19,20</sup> , Yao Liu<sup>21</sup> , Feng Long<sup>1</sup> , François Ménard<sup>13</sup> , Hideko Nomura<sup>16</sup> , Chunhua Qi<sup>1</sup> , Kamber R. Schwarz<sup>22,24</sup> , Anibal Sierra<sup>23</sup> , Takashi Tsukagoshi<sup>16</sup> , Yoshihide Yamato<sup>9</sup> , Merel L. R. van 't Hoff<sup>8</sup> , Catherine Walsh<sup>15</sup> , David J. Wilner<sup>1</sup> , and Ke Zhang<sup>8,25</sup>

<sup>1</sup> Center for Astrophysics | Harvard & Smithsonian, 60 Garden St., Cambridge, MA 02138, USA; [charles.law@cfa.harvard.edu](mailto:charles.law@cfa.harvard.edu)

<sup>2</sup> National Radio Astronomy Observatory, 520 Edgemont Rd., Charlottesville, VA 22903, USA

<sup>3</sup> Department of Astronomy and Astrophysics, 525 Davey Laboratory, The Pennsylvania State University, University Park, PA 16802, USA

<sup>4</sup> Center for Exoplanets and Habitable Worlds, 525 Davey Laboratory, The Pennsylvania State University, University Park, PA 16802, USA

<sup>5</sup> Center for Astrostatistics, 525 Davey Laboratory, The Pennsylvania State University, University Park, PA 16802, USA

<sup>6</sup> Institute for Computational & Data Sciences, The Pennsylvania State University, University Park, PA 16802, USA

<sup>7</sup> Department of Astronomy, 501 Campbell Hall, University of California, Berkeley, CA 94720-3411, USA

<sup>8</sup> Department of Astronomy, University of Michigan, 323 West Hall, 1085 S. University Avenue, Ann Arbor, MI 48109, USA

<sup>9</sup> Department of Astronomy, Graduate School of Science, The University of Tokyo, Tokyo 113-0033, Japan

<sup>10</sup> Earth and Planets Laboratory, Carnegie Institution for Science, 5241 Broad Branch Road NW, Washington, DC 20015, USA

<sup>11</sup> Department of Astronomy, University of Florida, Gainesville, FL 32611, USA

<sup>12</sup> University of Chicago, Department of the Geophysical Sciences, Chicago, IL 60637, USA

<sup>13</sup> Univ. Grenoble Alpes, CNRS, IPAG, F-38000 Grenoble, France

<sup>14</sup> Leiden Observatory, Leiden University, 2300 RA Leiden, The Netherlands

<sup>15</sup> School of Physics and Astronomy, University of Leeds, Leeds, LS2 9JT, UK

<sup>16</sup> National Astronomical Observatory of Japan, 2-21-1 Osawa, Mitaka, Tokyo 181-8588, Japan

<sup>17</sup> Department of Astronomy, University of Virginia, Charlottesville, VA 22904, USA

<sup>18</sup> Instituto de Astrofísica, Pontificia Universidad Católica de Chile, Av. Vicuña Mackenna 4860, 7820436 Macul, Santiago, Chile

<sup>19</sup> IRAP, Université de Toulouse, CNRS, CNES, UT3, F-31400 Toulouse, France

<sup>20</sup> IRAM, 300 rue de la piscine, F-38406 Saint-Martin d'Hères, France

<sup>21</sup> Purple Mountain Observatory & Key Laboratory for Radio Astronomy, Chinese Academy of Sciences, Nanjing 210023, People's Republic of China

<sup>22</sup> Lunar and Planetary Laboratory, University of Arizona, 1629 E. University Blvd., Tucson, AZ 85721, USA

<sup>23</sup> Departamento de Astronomía, Universidad de Chile, Camino El Observatorio 1515, Las Condes, Santiago, Chile

Received 2022 April 22; published 2022 May 13

In the published article, we computed the disk size in 18 molecular emission lines and the 90 and 260 GHz continuum for all sources (Section 3.5). We defined  $R_{\text{gas}}$  as the radius which encloses 90% of the total line emission or continuum flux. However, we omitted the necessary factor of  $2\pi r$  when computing the cumulative sums, i.e., the integral of a radial function has an areal element of  $2\pi r dr$ .

Table 2 is revised and lists the updated gas and continuum disk sizes, and Figures 15 and 16 are also updated. For all sources, the disk size of each line increases in nearly all cases, with mean increases of 45% (IM Lup), 47% (GM Aur), 22% (AS 209), 44% (HD 163296), and 43% (MWC 480). The most notable changes are  $\gtrsim 100\%$  increases in the continuum sizes of the IM Lup and MWC 480 disks. The continuum emission in the AS 209 disk is no longer smaller than the majority of lines, and instead it is slightly larger than the complex nitriles and comparable to that of  $\text{C}_2\text{H}$  3–2 and CS 2–1.

Overall, the relative ordering of disk sizes among lines remains approximately the same, as shown in Figures 15 and 16, and all subsequent discussion and conclusions presented in the published article remain unchanged.

### ORCID iDs

Charles J. Law <https://orcid.org/0000-0003-1413-1776>  
Ryan A. Loomis <https://orcid.org/0000-0002-8932-1219>  
Richard Teague <https://orcid.org/0000-0003-1534-5186>  
Karin I. Öberg <https://orcid.org/0000-0001-8798-1347>  
Ian Czekala <https://orcid.org/0000-0002-1483-8811>  
Sean M. Andrews <https://orcid.org/0000-0003-2253-2270>

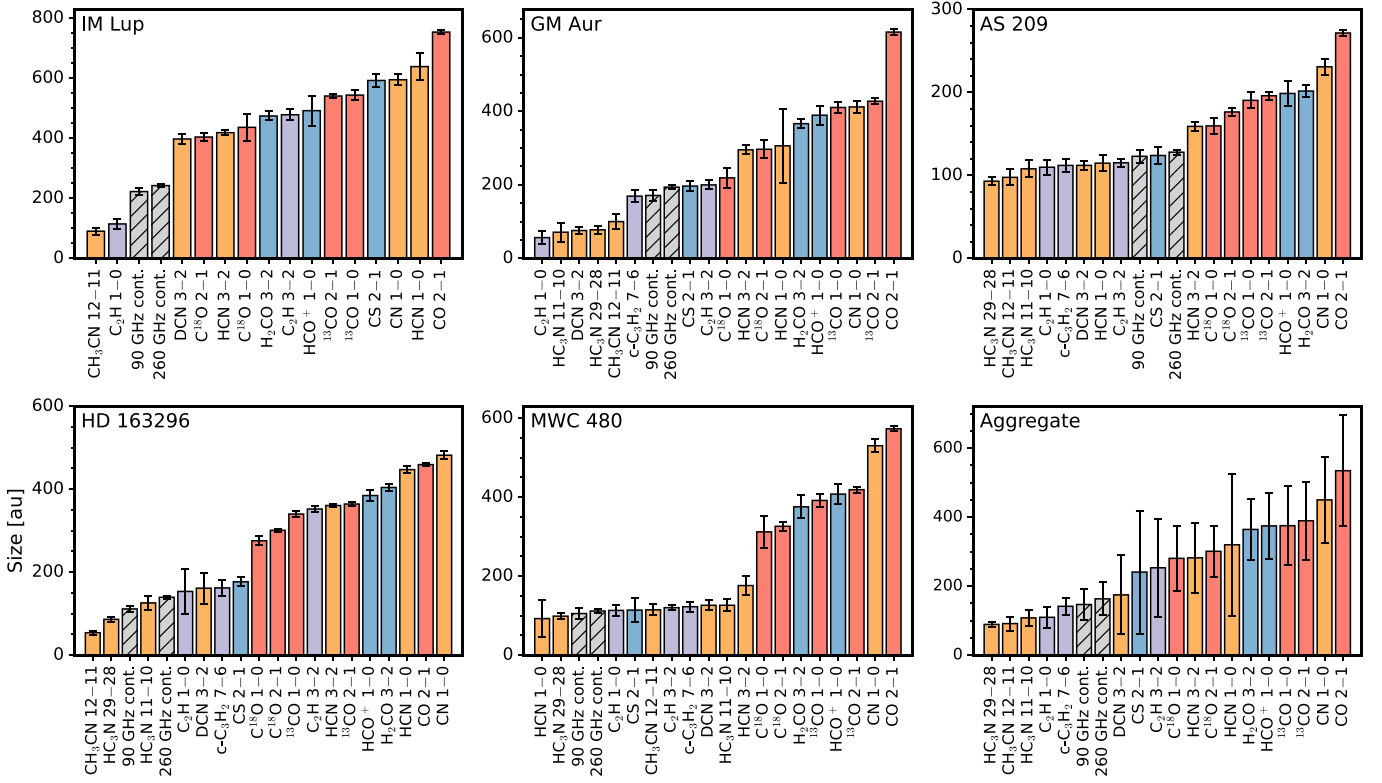
Jane Huang <https://orcid.org/0000-0001-6947-6072>  
Yuri Aikawa <https://orcid.org/0000-0003-3283-6884>  
Felipe Alarcón <https://orcid.org/0000-0002-2692-7862>  
Jaehan Bae <https://orcid.org/0000-0001-7258-770X>  
Edwin A. Bergin <https://orcid.org/0000-0003-4179-6394>  
Jennifer B. Bergner <https://orcid.org/0000-0002-8716-0482>  
Yann Boehler <https://orcid.org/0000-0002-8692-8744>  
Alice S. Booth <https://orcid.org/0000-0003-2014-2121>  
Arthur D. Bosman <https://orcid.org/0000-0003-4001-3589>  
Jenny K. Calahan <https://orcid.org/0000-0002-0150-0125>  
Gianni Cataldi <https://orcid.org/0000-0002-2700-9676>  
L. Ilseore Cleeves <https://orcid.org/0000-0003-2076-8001>  
Kenji Furuya <https://orcid.org/0000-0002-2026-8157>  
Viviana V. Guzmán <https://orcid.org/0000-0003-4784-3040>

<sup>24</sup> NASA Hubble Fellowship Program Sagan Fellow.

<sup>25</sup> NASA Hubble Fellow.



Original content from this work may be used under the terms of the [Creative Commons Attribution 4.0 licence](https://creativecommons.org/licenses/by/4.0/). Any further distribution of this work must maintain attribution to the author(s) and the title of the work, journal citation and DOI.



**Figure 15.** Gas disk size for all lines organized by increasing sizes within each disk. Sizes are color coded by species, as described in Section 3.5. The size of the 90 and 260 GHz continuum disks are shown as gray hatched bars for comparison. The aggregate panel shows mean sizes of each line across the MAPS disks with error bars showing the standard deviation. Disk sizes are defined as the radius containing 90% of total flux.

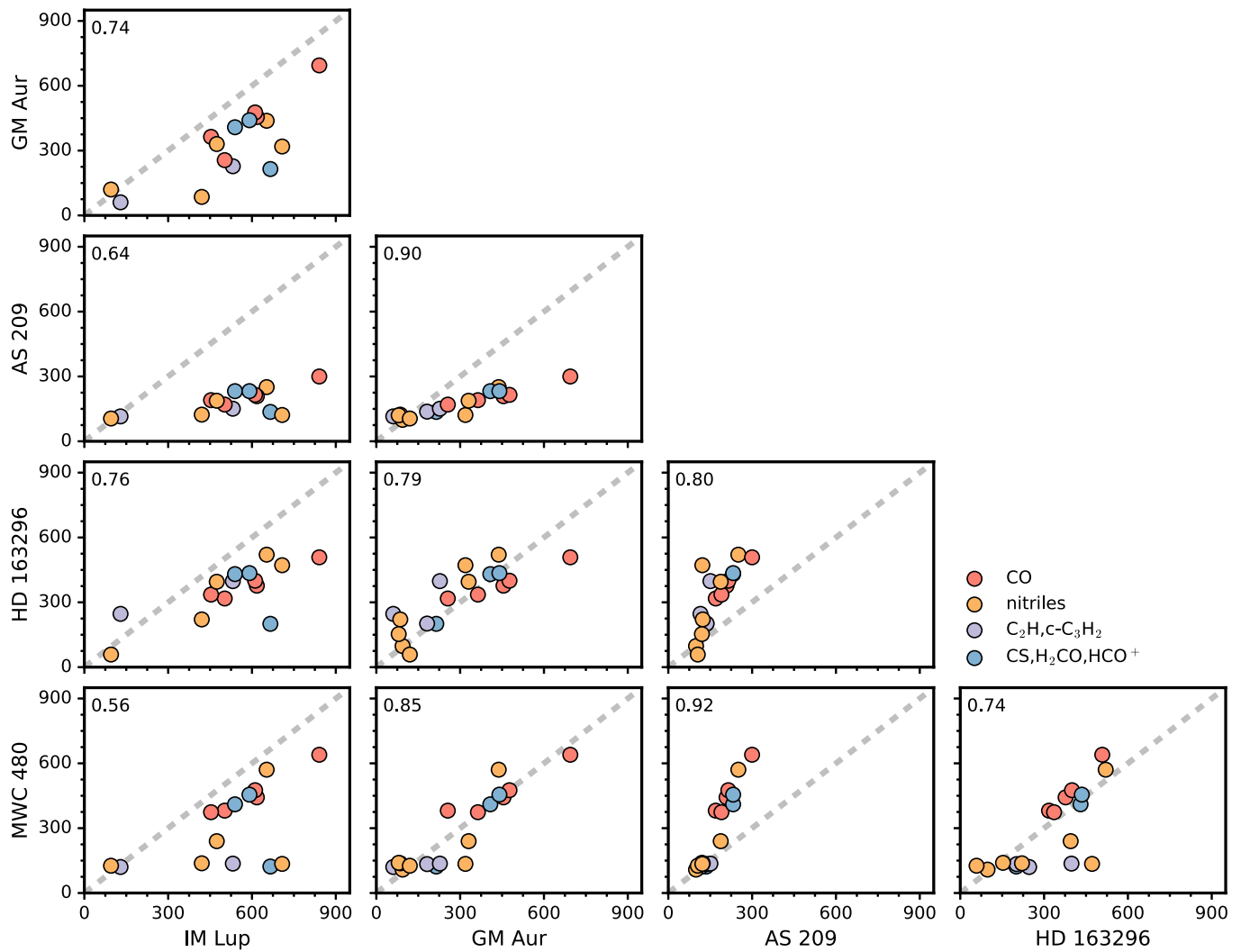
**Table 2**  
Gas Disk Sizes

Line	Disk Size (au)				
	IM Lup	GM Aur	AS 209	HD 163296	MWC 480
CO 2–1	753 ± 6	616 ± 9	272 ± 4	459 ± 4	573 ± 7
<sup>13</sup> CO 2–1	540 ± 7	427 ± 9	196 ± 5	364 ± 4	419 ± 7
<sup>13</sup> CO 1–0	543 ± 16	410 ± 16	190 ± 10	340 ± 8	392 ± 17
C <sup>18</sup> O 2–1	404 ± 14	297 ± 24	176 ± 5	301 ± 4	326 ± 11
C <sup>18</sup> O 1–0	436 ± 45	219 ± 26	160 ± 9	275 ± 11	312 ± 40
C <sub>2</sub> H 3–2	478 ± 18	200 ± 12	115 ± 5	352 ± 8	120 ± 7
C <sub>2</sub> H 1–0	114 ± 15	56 ± 17	110 ± 9	153 ± 55	113 ± 14
c-C <sub>3</sub> H <sub>2</sub> 7–6	...	169 ± 16	112 ± 8	162 ± 20	122 ± 13
H <sub>2</sub> CO 3–2	474 ± 15	366 ± 13	202 ± 7	404 ± 9	375 ± 29
HCO <sup>+</sup> 1–0	492 ± 50	389 ± 25	199 ± 15	385 ± 13	408 ± 26
CS 2–1	592 ± 21	197 ± 13	124 ± 10	177 ± 11	114 ± 31
HCN 3–2	418 ± 9	295 ± 13	159 ± 5	361 ± 4	176 ± 24
HCN 1–0	638 ± 45	306 ± 100	115 ± 9	447 ± 9	92 ± 47
DCN 3–2	397 ± 17	76 ± 10	112 ± 6	161 ± 37	126 ± 12
HC <sub>3</sub> N 29–28	...	77 ± 11	93 ± 5	86 ± 6	98 ± 8
HC <sub>3</sub> N 11–10	...	71 ± 26	108 ± 10	126 ± 16	126 ± 15
CN 1–0	594 ± 18	412 ± 16	231 ± 9	482 ± 9	530 ± 16
CH <sub>3</sub> CN 12–11	90 ± 12	100 ± 21	98 ± 10	54 ± 5	114 ± 14
90 GHz continuum	222 ± 10	171 ± 14	123 ± 8	111 ± 6	105 ± 13
260 GHz continuum	242 ± 4	194 ± 5	128 ± 3	139 ± 3	111 ± 5

**Note.** Disk size was computed as the radius which encloses 90% of the total disk flux (see Section 3.5). Note that this is often smaller than the total radial extent of an emission line due to the presence of diffuse, low flux emission at large radii.

John D. Ilee <https://orcid.org/0000-0003-1008-1142>  
 Romane Le Gal <https://orcid.org/0000-0003-1837-3772>  
 Yao Liu <https://orcid.org/0000-0002-7616-666X>

Feng Long <https://orcid.org/0000-0002-7607-719X>  
 François Ménard <https://orcid.org/0000-0002-1637-7393>  
 Hideko Nomura <https://orcid.org/0000-0002-7058-7682>



**Figure 16.** Gas disk size of chemical species in astronomical units for each disk plotted against one another. Spearman correlation coefficients are displayed in the upper left corners of each scatter plot. A one-to-one size ratio is shown as a gray dashed line. Sizes are color coded by species according to the legend. In general, the distribution of sizes in different species is quite consistent among disks.

Chunhua Qi <https://orcid.org/0000-0001-8642-1786>  
 Kamber R. Schwarz <https://orcid.org/0000-0002-6429-9457>  
 Anibal Sierra <https://orcid.org/0000-0002-5991-8073>  
 Takashi Tsukagoshi <https://orcid.org/0000-0002-6034-2892>  
 Yoshihide Yamato <https://orcid.org/0000-0003-4099-6941>

Merel L. R. van 't Hoff <https://orcid.org/0000-0002-2555-9869>  
 Catherine Walsh <https://orcid.org/0000-0001-6078-786X>  
 David J. Wilner <https://orcid.org/0000-0003-1526-7587>  
 Ke Zhang <https://orcid.org/0000-0002-0661-7517>