



Universiteit
Leiden
The Netherlands

The MOSDEF survey: a new view of a remarkable $z = 1.89$ merger

Runco, J.N.; Shapley, A.E.; Kriek, M.T.; Cappellari, M.; Topping, M.W.; Sanders, R.L.; ... ; Aird, J.

Citation

Runco, J. N., Shapley, A. E., Kriek, M. T., Cappellari, M., Topping, M. W., Sanders, R. L., ... Aird, J. (2022). The MOSDEF survey: a new view of a remarkable $z = 1.89$ merger. *Monthly Notices Of The Royal Astronomical Society*, 517(3), 4405-4416.
doi:10.1093/mnras/stac2863

Version: Accepted Manuscript

License: [Leiden University Non-exclusive license](#)

Downloaded from: <https://hdl.handle.net/1887/3561719>

Note: To cite this publication please use the final published version (if applicable).

The MOSDEF Survey: A New View of a Remarkable $z = 1.89$ Merger¹

Jordan N. Runco,^{2*} Alice E. Shapley,² Mariska Kriek,^{3,4} Michele Cappellari,⁵
 Michael W. Topping,^{2,6} Ryan L. Sanders,^{7,8} Vasily I. Kokorev,^{9,10,11} Sedona H. Price,¹²
 Naveen A. Reddy,¹³ Alison L. Coil,¹⁴ Bahram Mobasher,¹³ Brian Siana,¹³
 Tom Zick,⁴ Georgios E. Magdis,^{10,11,15} Gabriel Brammer,^{10,11} James Aird¹⁶

¹Based on data obtained at the W.M. Keck Observatory, which is operated as a scientific partnership among the California Institute of Technology, the University of California, and the National Aeronautics and Space Administration, and was made possible by the generous financial support of the W.M. Keck Foundation.

²Physics & Astronomy Department, University of California: Los Angeles, 430 Portola Plaza, Los Angeles, CA 90095, USA

³Leiden Observatory, Leiden University, PO Box 9513, NL-2300 RA Leiden, The Netherlands

⁴Astronomy Department, University of California, Berkeley, CA 94720, USA

⁵Sub-Department of Astrophysics, Department of Physics, University of Oxford, Denys Wilkinson Building, Keble Road, Oxford, OX1 3RH, UK

⁶Department of Astronomy/Steward Observatory, 933 North Cherry Ave, Rm N204, Tucson, AZ 85721-0065, USA

⁷Department of Physics, University of California, Davis, One Shields Ave, Davis, CA 95616, USA

⁸Hubble Fellow

⁹Kapteyn Astronomical Institute, University of Groningen, P.O. Box 800, 9700AV Groningen, The Netherlands

¹⁰Cosmic Dawn Center (DAWN), Jagtvej 128, DK2200 Copenhagen N, Denmark

¹¹Niels Bohr Institute, University of Copenhagen, Blegdamsvej 17, DK2100 Copenhagen Ø, Denmark

¹²Max-Planck-Institut für Extraterrestrische Physik, Postfach 1312, Garching, 85741, Germany

¹³Department of Physics & Astronomy, University of California, Riverside, 900 University Avenue, Riverside, CA 92521, USA

¹⁴Center for Astrophysics and Space Sciences, University of California, San Diego, 9500 Gilman Dr., La Jolla, CA 92093-0424, USA

¹⁵DTU-Space, Technical University of Denmark, Elektrovej 327, DK-2800 Kgs. Lyngby, Denmark

¹⁶Institute for Astronomy, University of Edinburgh, Royal Observatory, Edinburgh EH9 3HJ, UK

Accepted XXX. Received YYY; in original form ZZZ

ABSTRACT

We present a detailed study of a galaxy merger taking place at $z = 1.89$ in the GOODS-S field. Here we analyze Keck/MOSFIRE spectroscopic observations from the MOSFIRE Deep Evolution Field (MOSDEF) survey along with multi-wavelength photometry assembled by the 3D-HST survey. The combined dataset is modeled to infer the past star-formation histories (SFHs) of both merging galaxies. They are found to be massive, with $\log_{10}(M_*/M_\odot) > 11$, with a close mass ratio satisfying the typical major-merger definition. Additionally, in the context of delayed- τ models, GOODS-S 43114 and GOODS-S 43683 have similar SFHs and low star-formation rates ($\log_{10}(\text{SFR}(\text{SED})/M_\odot/\text{yr}^{-1}) < 1.0$) compared to their past averages. The best-fit model SEDs show elevated $H\delta_A$ values for both galaxies, indicating that their stellar spectra are dominated by A-type stars, and that star formation peaked $\sim 0.5 - 1$ Gyr ago and has recently declined. Additionally, based on SED fitting both merging galaxies turned on and shut off star formation within a few hundred Myr of each other, suggesting that their bursts of star formation may be linked. Combining the SFHs and $H\delta_A$ results with recent galaxy merger simulations, we infer that these galaxies have recently completed their first pericentric passage and are moving apart. Finally, the relatively low second velocity moment of GOODS-S 43114 given its stellar mass, suggests a disk-like structure. However, including the geometry of the galaxy in the modeling does not completely resolve the discrepancy between the dynamical and stellar masses. Future work is needed to resolve this inconsistency in mass.

Key words: galaxies: evolution — galaxies: high-redshift – galaxies: interactions

1 INTRODUCTION

Within the current Λ CDM cosmological framework, galaxies grow in mass through both merging events and the smooth accretion of

* E-mail: jrunco@astro.ucla.edu

baryons and dark matter. Mergers are an important component of galaxy formation models (e.g., Hopkins et al. 2010), and obtaining empirical constraints on merger rates as a function of galaxy mass and redshift is a current goal for observational galaxy evolution (e.g., Lotz et al. 2011; Cibinel et al. 2019; Duncan et al. 2019). Merging systems have been observed out to $z \sim 6$ (Ventou et al. 2017), approximately ~ 0.9 Gyr after the big bang.

Locally (i.e., $z \sim 0$), the Sloan Digital Sky Survey (SDSS) has obtained large statistical samples of pre-coalescence galaxy pairs with projected separations of 30 – 80 kpc and radial velocity differences of 200 – 500 km s⁻¹ (Ellison et al. 2008; Patton et al. 2011, 2013; Scudder et al. 2012, 2015). Compared to isolated galaxies at fixed stellar mass, these systems are identified as having gas-phase metallicity depressed by $\sim 0.02 - 0.05$ dex and star-formation rate (SFR) enhanced by $\sim 60\%$ out to 30 kpc separation (Scudder et al. 2012). Merging systems at $z > 1$ are identified through a variety of methods including photometric pairs (e.g., Williams et al. 2011; Man et al. 2012, 2016; Mantha et al. 2018), spectroscopic features (e.g., Tasca et al. 2014; Ventou et al. 2017; Dai et al. 2021), and visible morphological features such as tidal tails and double nuclei (e.g., Lofthouse et al. 2017; Kartaltepe et al. 2015).

Rest-optical spectroscopy provides a powerful probe of key galaxy properties such as SFR and metallicity, which register the effects of merging interactions. In the last decade, the commissioning of multi-object near-IR spectrographs on large ground-based telescopes has enabled us to obtain large samples of high S/N rest-optical emission-line spectra for galaxies at $z \sim 1.5 - 3.5$. Utilizing the MultiObject Spectrometer For Infra-Red Exploration (MOSFIRE; McLean et al. 2012) instrument on the 10 m Keck I telescope, the MOSFIRE Deep Evolution Field (MOSDEF) survey (Kriek et al. 2015) has observed ~ 1500 galaxies at $1.4 \leq z \leq 3.8$ (roughly half of which are at $z \sim 2$). Previous MOSDEF studies have identified high-redshift mergers using multiple methods. Horstman et al. (2021) identified 55 mergers at $z \sim 2$ using the Cosmic Assembly Near-infrared Dark Energy Legacy Survey (CANDELS) morphology catalog (Kartaltepe et al. 2015), and Wilson et al. (2019) spectroscopically identified 30 galaxy pairs at $1.5 \lesssim z \lesssim 3.5$.

In this study, we present a merger at $z = 1.89$ between the galaxies GOODS-S 43114 and GOODS-S 43683, where galaxy IDs are drawn from the 3D-HST survey catalogs of Skelton et al. (2014). GOODS-S 43114 was targeted by the MOSDEF team, and high-quality J -, H -, and K_s -band Keck/MOSFIRE spectra were obtained. GOODS-S 43683 was not a MOSDEF target; however, it was serendipitously captured in the MOSFIRE slit given the mask position angle. This merger pair has been previously identified by van Dokkum & Brammer (2010) and is in the CANDELS morphology catalog (Kartaltepe et al. 2015), though it has not been highlighted in previous MOSDEF merger analyses (e.g., Wilson et al. 2019; Horstman et al. 2021). van Dokkum & Brammer (2010) analyze the *HST* images and low-resolution WFC3 grism spectra of the merger pair, and, in addition, report that both galaxies contain an active galactic nucleus (AGN) based on X-ray luminosity data from Luo et al. (2008).

The goal of this study is to build on the earlier work of van Dokkum & Brammer (2010) by analyzing the spectroscopic and host-galaxy properties of both galaxies using Keck/MOSFIRE spectra and emission-line corrected SED fitting and comparing with state-of-the-art galaxy merger simulations. Specifically, we aim to better understand the galaxy star formation histories (SFHs) and stellar population properties and the evolutionary stage of the merger, by fitting the H δ absorption feature following the methodology from Zick et al. (2018) and using it to estimate the second velocity mo-

ment and dynamical mass of the system. Our analysis is enhanced relative to previous work on this merger pair based on both the inclusion of higher-resolution rest-optical spectroscopy enabling a dynamical analysis of GOODS-S 43114, and also more systematic SED modeling of both members of the galaxy pair that folds in pan-chromatic observations extending through the mid- and far-IR. Section 2 provides an overview of the MOSDEF survey and presents the observations, the SED fitting methodology, and derived galaxy properties. Section 3 presents the results, while Section 4 provides a discussion of the key results in the context of current work with galaxy merger simulations. Finally, Section 5 summarizes the key results from this study.

All emission-line wavelengths are given in the vacuum frame. Throughout this paper, we adopt a Λ -CDM cosmology with $H_0 = 70$ km s⁻¹ Mpc⁻¹, $\Omega_m = 0.3$, and $\Omega_\Lambda = 0.7$. Also, we assume the solar abundance pattern from Asplund et al. (2009).

2 OBSERVATIONS & METHODS

2.1 The MOSDEF Survey

Using the MOSFIRE instrument on the 10 m Keck I telescope, the MOSDEF survey has observed ~ 1500 galaxies throughout its 48.5-night observing program between 2012-2016. MOSDEF galaxies were selected from five well-studied CANDELS and 3D-HST legacy fields (Grogin et al. 2011; Koekemoer et al. 2011; Momcheva et al. 2016) – AEGIS, COSMOS, GOODS-N, GOODS-S, and UDS – and were targeted in three distinct redshift ranges: $1.37 \leq z \leq 1.70$, $2.09 \leq z \leq 2.61$, and $2.95 \leq z \leq 3.80$. These redshift bins were selected to optimise the detection of strong rest-optical emission-lines (e.g., [O II] $\lambda\lambda 3727, 3730$, H β , [O III] $\lambda\lambda 4960, 5008$, H α , [N II] $\lambda 6585$, and [S II] $\lambda\lambda 6718, 6733$) within windows of atmospheric transmission. Moderate spectral resolution ($R = 3000-3650$) was obtained, and the survey is H -band (rest-optical) magnitude-limited ($H_{AB} = 24.0, 24.5, \text{ and } 25.0$, respectively, in the low-, middle-, and high-redshift bins of the MOSDEF sample). We use an ABA'B' (+1."5, 1."2, -1."2, -1."5) dither pattern to account for detector defects, sky variations, and increase the S/N of the final spectra (Kriek et al. 2008). For additional MOSDEF observing details, see Kriek et al. (2015).

2.2 GOODS-S 43114 & GOODS-S 43683 Observations

GOODS-S 43114 was targeted for MOSDEF spectroscopic observations based on a cataloged spectroscopic redshift of $z = 2.6087$ from Balestra et al. (2010). In fact, this cataloged spectroscopic redshift is inconsistent with both the photometric redshift of $z = 1.9135$ listed in the 3D-HST catalog (see also Schawinski et al. 2011), and the grism spectroscopic redshift presented in van Dokkum & Brammer (2010), the latter of which we were unaware of at the time of observation. The 3D-HST photometric redshift in fact places GOODS-S 43114 outside all of the nominal MOSDEF target ranges. However, within the MOSDEF targeting process, existing spectroscopic redshifts were given priority in the event that a discrepancy arose between spectroscopic and photometric redshift. Using the erroneous spectroscopic redshift for GOODS-S 43114 led to the fortuitous observation of the unique spectra described here.

GOODS-S 43114 was observed across two nights: January 1 and 2 2016. The integration time was 2 hours in each of the J , H , and K_s bands with seeing of 0.67, 0.86, and 0.65 arcseconds, respectively. The spectroscopic redshift derived from our MOSFIRE

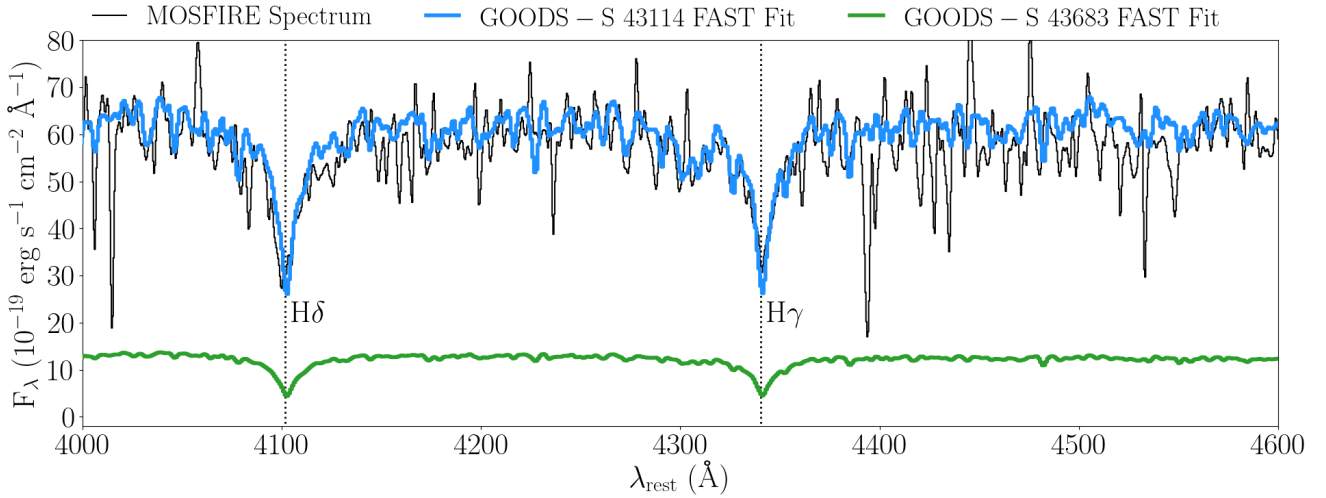


Figure 1. MOSFIRE J -band spectrum (black) for GOODS-S 43114 along with the section of the GOODS-S 43114 FAST fit (blue) and GOODS-S 43683 FAST fit (green) that overlaps with the spectra. The $H\delta$ and $H\gamma$ stellar absorption features are labeled. The y-axis is given in units of $10^{-19} F_\lambda$ (i.e., $\text{erg s}^{-1} \text{cm}^{-1} \text{\AA}^{-1}$). The MOSFIRE spectrum has been smoothed to match the resolution of the best-fit FAST model.

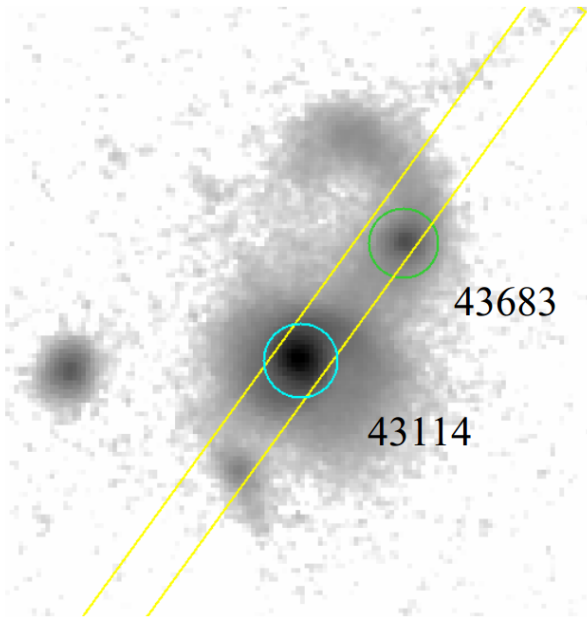


Figure 2. The HST WFC3 F160W image from the CANDELS survey with the MOSFIRE slit (yellow), GOODS-S 43114 centroid (blue) and GOODS-S 43683 centroid (green) identified. The image is shown with North up and East to the left.

observations is $z = 1.8869$, which is consistent with the photometric redshift in the 3D-HST catalog (1.9135 ± 0.0395), and slightly lower than the redshift presented in van Dokkum & Brammer (2010) (1.902 ± 0.002). At this redshift, nebular emission lines such as $[\text{O II}]\lambda\lambda 3727, 3730$, $H\beta$, $[\text{O III}]\lambda\lambda 4960, 5008$, $H\alpha$, $[\text{N II}]\lambda 6585$, and $[\text{S II}]\lambda\lambda 6718, 6733$ fall outside of the J , H , and K_s -bands. However, we did observe the $H\gamma$ and $H\delta$ Balmer absorption lines in the J band, from which we derived a spectroscopic redshift for GOODS-S 43114. The J -band MOSFIRE spectrum of GOODS-S 43114 is shown in Figure 1. No discernible emission- or absorption-line features were captured in the H or K_s -bands. For the observation of this merger pair, the MOSFIRE slit width was $0.7''$ (5.89 kpc at

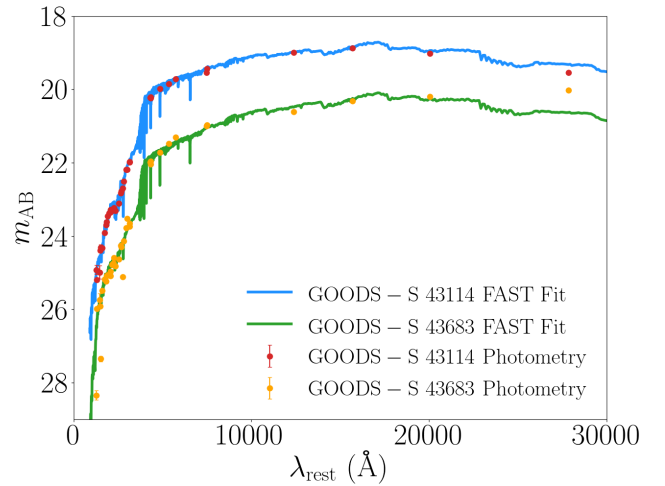


Figure 3. The best-fit FAST models and photometric datapoints for GOODS-S 43114 and GOODS-S 43683, shown in the rest frame. The best-fit FAST model and photometric data are indicated, respectively, with a blue curve and red points for GOODS-S 43114, and a green curve and orange points, respectively, for GOODS-S 43683. The y-axis is given in units of AB magnitude (m_{AB}).

$z = 1.89$) and the FWHM of the profile used for optimal extraction was $1.1''$ (9.26 kpc at $z = 1.89$).

Figure 2 shows the HST WFC3 F160W 2D image of GOODS-S 43114 and GOODS-S 43683, including identifications of the centroids of the galaxies and the position of the MOSFIRE slit. We measure that the centroids of the two galaxies are 2.135 arcseconds (18 kpc) apart, which agrees with van Dokkum & Brammer (2010). As previously stated, GOODS-S 43683 was not specifically targeted as part of the MOSDEF survey; however, as Figure 2 shows, it was captured serendipitously in the MOSDEF slit with GOODS-S 43114 given the slit position angle of -40 degrees E of N. Unfortunately, due to the adopted ABA'B' dither pattern and our method of using dithered exposures for sky subtraction (Kriek et al. 2015), we cannot detect the spectrum of GOODS-S 43683. Specifically, at a separation of 2.135 arcseconds, the positive contin-

uum of GOODS-S 43683 overlaps with the negative sky-subtraction residual of GOODS-S 43114 offset towards the top of the slit.

GOODS-S 43114 and GOODS-S 43683 have been identified as a merger pair in [van Dokkum & Brammer \(2010\)](#) and the CANDELS morphology catalog ([Kartaltepe et al. 2015](#)). The latter classifies mergers and other galaxy features based on the visual inspection. For GOODS-S 43114 (GOODS-S 43683), 100% (66%) of people classified it as having “any interaction” while 66% (100%) claimed that tidal arms exist. GOODS-S 43114 is a class 4 merger, while GOODS-S 43683 is a class 3 merger, both of which are high confidence merger classifications. [van Dokkum & Brammer \(2010\)](#) also report this galaxy pair as having merger features such as diffuse, tidally-induced spiral arms and tails.

2.3 SED Fitting & Derived Properties

We use the SED fitting code FAST¹ ([Kriek et al. 2009](#)) to obtain best-fit SEDs and estimates of key galaxy properties for GOODS-S 43114 and GOODS-S 43683. With FAST, we adopt the Flexible Stellar Population Synthesis (FSPS) library from ([Conroy & Gunn 2010](#)) and assume a [Chabrier \(2003\)](#) stellar initial mass function (IMF), a [Calzetti et al. \(2000\)](#) dust attenuation curve, and delayed- τ star-formation histories where $\text{SFR}(\text{SED}) \propto t \times e^{-t/\tau}$ where τ is the characteristic star-formation timescale and t is the time since the onset of star formation. We allow t , τ , the amount of interstellar extinction (A_V), and stellar mass of the galaxy (M_*) to vary within the models, while fixing the metallicity to 0.019 (defined to be solar metallicity in the [Conroy & Gunn 2010](#) library). For the SED fitting, we fix GOODS-S 43114 and GOODS-S 43683 redshifts to the MOSFIRE spectroscopic redshift obtained for GOODS-S 43114. Given that these galaxies are in a merger with the centroids being only ~ 18 kpc apart, this redshift assumption for GOODS-S 43683 seems reasonable. [van Dokkum & Brammer \(2010\)](#) validate our assumption, reporting $z = 1.898 \pm 0.003$ for GOODS-S 43683 (they report $z = 1.902 \pm 0.002$ for GOODS-S 43114). In addition, fitting the photometry with the code EAZY² ([Brammer et al. 2008](#)) yields a photometric redshift of 1.899. Along with the best-fit SED and an estimate of M_* , $\text{SFR}(\text{SED})$, A_V , and t/τ , we estimate $s\text{SFR}(\text{SED})$ from $\text{SFR}(\text{SED})$ and M_* . UVJ colors are measured from the best-fit SED using the IRAF ([Tody 1986, 1993](#)) routine *sbands*.

We use broadband photometry drawn from the 3D-HST v4.1 catalogs ([Skelton et al. 2014](#)) for both GOODS-S 43114 and GOODS-S 43683. A full description of the method used for multi-wavelength photometric measurements is provided in [Skelton et al. \(2014\)](#). For GOODS-S 43114, we fit a combination of the broadband photometry and the J -band MOSFIRE spectra. Here the MOSFIRE spectra are normalized to match the flux density corresponding to the photometric points in each band. Additionally, for the fitting, we ensure that the $R = 3300$ MOSFIRE J -band spectrum and FAST models (with a native resolution of 2.5\AA in the rest frame, [Johnson et al. 2021a](#)) are matched in spectral resolution. For GOODS-S 43683, we only use the photometry in the fitting process because this target was not spectroscopically detected in the MOSFIRE observations.

The best-fit SEDs and photometry are shown in Figure 3. For GOODS-S 43683, there is an offset between the photometry (specifically IRAC channels 3 and 4) and best-fit SED due to the contribution of the AGN. As a sanity check, we refit the photometry with

FAST without IRAC channels 2, 3, and 4, and find no significant difference in the estimated galaxy properties. Therefore, the presence of the AGN does not bias the SED fit. The portion of the best-fit SEDs that overlaps with the MOSDEF J -band spectrum is shown in Figure 1.

We estimate the 4000 \AA break (D_n4000) and the $H\delta$ absorption-line feature ($H\delta_A$) using the wavelength ranges from, respectively, [Worthey & Ottaviani \(1997\)](#) and [Balogh et al. \(1999\)](#). D_n4000 traces the opacity of stellar atmospheres and increases with metallicity and age. $H\delta_A$ peaks when A-type stars dominate the spectrum, which occurs when a short burst of star formation is followed by rapid quenching. Therefore, the combination of these features can reveal information about the star formation timescale and evolutionary phase of a galaxy, as $H\delta_A$ is sensitive to recently-quenched star formation while D_n4000 is sensitive to age. We utilize the best-fit FAST models to measure both quantities for both GOODS-S 43114 and GOODS-S 43683. For GOODS-S 43114, it is also possible to estimate $H\delta_A$ from the spectra; however, part of the D_n4000 feature is blue-ward of the J -band spectrum, so we do not use the spectrum to estimate that quantity. The measurement of $H\delta_A$ from the model (i.e., 7.81\AA) is consistent at the $1 - 2\sigma$ level with that estimated from direct integration of the J -band spectrum itself ($H\delta_{A,\text{spectrum}} = 8.42_{0.56}^{0.56}\text{\AA}$).

We adopt morphological properties and uncertainties from the F160W catalog of [van der Wel et al. \(2014\)](#), in particular the half-light radius (R_e), the Sérsic index (n), the axis ratio (q), and the luminosity estimated from the Sérsic fit (L_{Ser}). [van der Wel et al. \(2014\)](#) used a single-component Sérsic profile fit to the two-dimensional light distribution of the F160W band to estimate these properties. The associated methodology for estimating the associated uncertainties on morphological properties is described in detail in [van der Wel et al. \(2012\)](#).

We used the Penalized Pixel-Fitting routine (ppxf³; [Cappellari & Emsellem 2004; Cappellari 2017](#)) to estimate the second moment of the line-of-sight velocity distribution within the half-light radius (σ_e) for GOODS-S 43114. We fit the MOSFIRE J -band spectrum using the [Vazdekis et al. \(2010\)](#) stellar population library. Specifically, we used a subset of 150 single stellar population template spectra with 25 stellar population ages logarithmically spaced between 0.063 and 15.8 Gyr and six metallicities, $[\text{M}/\text{H}] = (-1.71, -1.31, -0.71, -0.40, 0.00, \text{and } 0.22)$. In the fit, we used additive polynomials of degree four. Since the MOSFIRE spectrum is higher resolution than the stellar templates, we corrected the fitted second velocity moment upwards by the quadratic differences of the two resolutions using the following equation:

$$\sigma_e^2 = \sigma_{\text{obs}}^2 + \sigma_{\text{instr_temp}}^2 - \sigma_{\text{instr_gal}}^2 \quad (1)$$

where $\sigma_{\text{instr_temp}}^2$ and $\sigma_{\text{instr_gal}}^2$ are the instrumental dispersions of the templates and MOSFIRE spectrum, respectively, σ_{obs}^2 is the observed second moment, and σ_e^2 is the second velocity moment corrected for the difference in template and spectrum resolutions. Note that both the $H\gamma$ and $H\delta$ lines are included in the fit. [Tanaka et al. \(2019\)](#) show that the choice of stellar population library and whether or not to mask the Balmer absorption lines does not bias the estimated second velocity moment. We computed bootstrap uncertainties on σ_e^2 by perturbing the MOSFIRE J -band spectrum within its error spectrum and randomly changing the polynomial degree for the fit between 1 and 5.

¹ <https://w.astro.berkeley.edu/mariska/FAST.html>

² <http://www.astro.yale.edu/eazy/?home>

³ <https://pypi.org/project/ppxf/>

The second velocity moment, σ_e^2 , is used to estimate the dynamical mass (M_{dyn}) using the following methodology. First, we estimated the virial M/L ratio using the following equation:

$$(M/L)_{\text{vir}} = \frac{\beta(n) \times R_e \times \sigma_e^2}{L_{\text{Ser}} \times G} \quad (2)$$

where G is the gravitational constant and, as described above, the remaining variables and uncertainties are adopted from the [van der Wel et al. \(2014\)](#) catalog (i.e., R_e , n , and L_{Ser}). We adopted equation 20 from [Cappellari et al. \(2006\)](#) to estimate the virial coefficient ($\beta(n)$) using the Sérsic index. We used this M/L_{vir} ratio to estimate M_{dyn} according to the following equation:

$$M_{\text{dyn}} = (M/L)_{\text{vir}} \times L_{\text{FAST}} \quad (3)$$

where L_{FAST} is the F160W luminosity from the best-fit FAST model.

2.4 SDSS Comparison Sample

In Section 3, we compare the D_n4000 and $H\delta_A$ values of GOODS-S 43114 and GOODS-S 43683 with those of local galaxies using archival data from SDSS Data Release 7 (DR7; [Abazajian et al. 2009](#)), specifically from the MPA-JHU DR7 release of spectrum measurements⁴. We use the $H\delta_A$ and D_n4000 values from the catalog where the measured continuum indices in the spectra have been corrected for sky-line contamination using the best-fit model spectrum. We restrict the SDSS sample to a redshift range of $0.04 \leq z \leq 0.10$. These criteria give us a final local sample of 305,005 galaxies.

3 RESULTS

3.1 Galaxy Stellar Populations

The galaxy properties discussed in Section 2.3 are shown in Table 1. The reported 1σ uncertainties for best-fit galaxy properties (i.e., M_* , SFR(SED), sSFR(SED), τ , t/τ , and A_V) are estimated from perturbing the photometry and each wavelength element of the MOSFIRE J -band spectrum within their uncertainties and re-fitting 500 times. The same procedure was adopted to estimate uncertainties on properties obtained from the best-fit SED (i.e., UVJ colors, D_n4000 , and $H\delta_A$). Specifically, for each random iteration, the best-fit SEDs from the perturbed data are re-fit, and 1σ uncertainties (16th and 84th percentiles) for the parameters are estimated from the distributions of the fitted, perturbed quantities.

As discussed in Section 2.3, we obtain bootstrap uncertainties on σ_e by perturbing the MOSFIRE J -band spectrum within its error spectrum and randomly changing the polynomial degree of fit. The uncertainty on M_{dyn} was estimated by propagating the uncertainties on σ_e , R_e , n , and L_{Ser} through Equations 2 and 3. Finally, the derivation of the uncertainties for the morphological properties adopted from the [van der Wel et al. \(2014\)](#) catalog (i.e., R_e , n , and q) is described in [van der Wel et al. \(2012\)](#).

Note that many of the reported uncertainties are very small for properties estimated from the SED fitting, which results from both galaxies having both a very high number (39) of photometry points and small photometric error bars. In cases where we formally found zero uncertainty, we report upper limit in the magnitude of uncertainties based on either the smallest detected finite uncertainty

GOODS-S 43114 & GOODS-S 43683 Physical Properties

| Physical Property (1) | GOODS-S 43114 (2) | GOODS-S 43683 (3) |
|--|----------------------------|----------------------------|
| H_{AB} | 19.843 ± 0.003 | 21.479 ± 0.011 |
| $\log_{10}(M_*/M_{\odot})$ | $11.64^{<+0.01}_{>-0.01}$ | $11.04^{<+0.01}_{>-0.01}$ |
| $\log_{10}(t/\tau)$ | $0.96^{<+0.01}_{>-0.01}$ | $0.88^{+0.01}_{>-0.01}$ |
| $\log_{10}(\tau/\text{yr})$ | $8.00^{<+0.10}_{>-0.10}$ | $7.80^{<+0.10}_{>-0.10}$ |
| $\log_{10}(\text{SFR(SED)}) (M_{\odot} \text{ yr}^{-1})$ | $0.81^{<+0.01}_{>-0.01}$ | $0.97^{+0.01}_{>-0.06}$ |
| $\log_{10}(\text{sSFR(SED)}) (\text{yr}^{-1})$ | $-10.83^{<+0.01}_{>-0.01}$ | $-10.07^{<+0.01}_{>-0.06}$ |
| A_V | $0.46^{<+0.01}_{>-0.01}$ | $1.24^{+0.01}_{>-0.02}$ |
| U–V | $1.50^{<+0.001}_{>-0.001}$ | $1.56^{+0.005}_{>-0.005}$ |
| V–J | $0.82^{<+0.001}_{>-0.001}$ | $1.06^{+0.007}_{>-0.001}$ |
| D_n4000 | $1.23^{<+0.001}_{>-0.001}$ | $1.16^{+0.004}_{>-0.001}$ |
| $H\delta_A$ (Å) | $7.81^{<+0.01}_{>-0.01}$ | $10.17^{+0.06}_{>-0.01}$ |
| σ_e (km s ⁻¹) | 166 ± 21 | N/A |
| $\log_{10}(M_{\text{dyn}}/M_{\odot})$ | 11.16 ± 0.11 | N/A |
| R_e (arcseconds) | 0.366 ± 0.002 | N/A |
| Sérsic Index | 5.26 ± 0.06 | N/A |
| Axis Ratio | 0.865 ± 0.004 | N/A |

Table 1. Col. (1): Physical property of the galaxies in the sample. Col. (2): Property value for GOODS-S 43114. Col. (3): Property value for GOODS-S 43683. “N/A” is listed for σ_e and $\log_{10}(M_{\text{dyn}})$ because we do not have MOSFIRE spectra for this galaxy. Additionally, “N/A” is listed for the Sérsic index, axis ratio, and R_e due to poor fits. As discussed, the negligible formal uncertainties in the stellar population properties reported here (i.e., M_* , t , τ , SFR(SED), sSFR(SED), A_V , U–V, V–J, and D_n4000) do not reflect the true systematic uncertainties in such quantities.

for GOODS-S 43683 (e.g., U–V and V–J) or the parameter grid spacing (e.g., A_V and τ). However, it is essential to note that the quoted errors do not reflect systematic uncertainties due to various assumptions inherent to SED fitting models (e.g., stellar initial mass function, treatment of late stages of stellar evolution, dust attenuation curve; [Kriek et al. 2016](#)). [Muzzin et al. 2009](#) report that these systematic uncertainties are typically a few tenths of a dex, but the exact estimate varies for each measured property (e.g., M_* , t , etc.).

GOODS-S 43114 is found to be more massive and less dusty with a slightly older stellar population, lower SFR(SED), sSFR(SED), $H\delta_A$, larger D_n4000 , and bluer UVJ colors compared to GOODS-S 43683. Note that the observed difference in sSFR(SED) can be mostly attributed to the difference in M_* . According to standard classification (e.g., [Cox et al. 2008](#)), the close stellar mass ratio between GOODS-S 43114 and GOODS-S 43683 implies that this system is a “major merger.” We note that [van Dokkum & Brammer \(2010\)](#) described the merger between GOODS-S 43114 and GOODS-S 43683 as a “minor merger,” based on an approximate comparison of H -band brightnesses. However, based on both our

⁴ <https://www.mpa.mpa-garching.mpg.de/SDSS/DR7/>

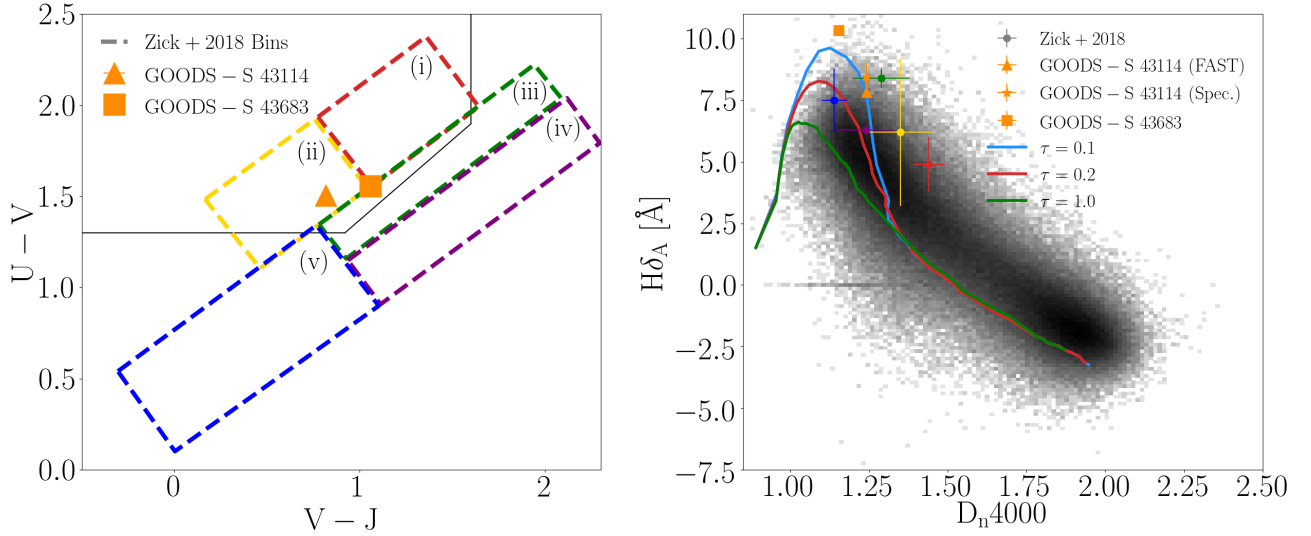


Figure 4. Left: UVJ diagram. GOODS-S 43114 and GOODS-S 43683 are shown by the orange triangle and square, respectively. The dashed boxes identify the five bins of galaxies from [Zick et al. \(2018\)](#): quiescent (red), post-starburst (yellow), dusty galaxies with lower sSFRs (green), dust star-forming (purple), and non-dusty star-forming (blue). GOODS-S 43114 falls into the post-starburst bin (i.e., bin (ii)), while GOODS-S 43683 falls at the intersection of bins (i), (ii), and (iii). The black line identifies the quiescent box defined in ([Williams et al. 2009](#)). Right: $H\delta_A$ vs. D_n4000 . The red, yellow, green, purple, and blue circles are color matched to identify the five bins of galaxies shown in the UVJ diagram. The blue, red, and green lines identify three delayed- τ SFHs, where $\tau = 0.1, 0.2,$ and 1.0 Gyr, respectively. The grayscale 2D histogram indicates local SDSS galaxies. The orange star identifies the $H\delta_A$ value measured from the MOSFIRE J -band spectrum of GOODS-S 43114, while the orange triangle and square have the same meaning as in the left-hand panel. The D_n4000 values for both galaxies are taken from the best-fit FAST models.

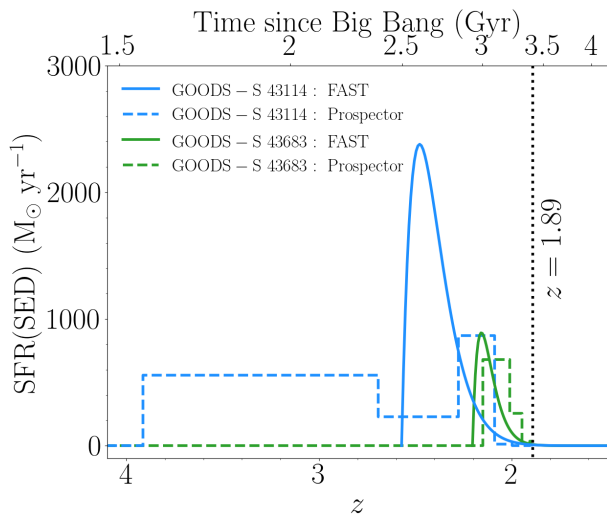


Figure 5. SFR(SED) vs. z displaying the best-fit SFHs assuming a delayed- τ model for GOODS-S 43114 (blue) and GOODS-S 43683 (green). The black dashed line identifies the epoch of observation (i.e., $z = 1.89$). The rapid burst of star formation followed by rapid quenching over the course of ~ 500 Myr or less gives an approximation of when the first pericentric passage took place.

updated comparison of H -band brightnesses and stellar masses from actual SED fits to both galaxies (indeed, [van Dokkum & Brammer 2010](#) only modeled the stellar population of GOODS-S 43114), we find a significantly closer mass ratio between the two galaxies.

Recall from Section 2.3 that we fit a combination of the photometry and MOSFIRE spectra of GOODS-S 43114, while we only fit the photometry of GOODS-S 43683. The values presented in Table 1 do not change significantly if we fit GOODS-S 43114 us-

ing only the photometry, applying the same methodology as for GOODS-S 43683. In addition, the conclusions we derive from these results (see Section 4) are not dependent on whether we fit both the photometry and MOSFIRE spectra of GOODS-S 43114, or the photometry alone.

Based on rest-frame UVJ colors, [Zick et al. \(2018\)](#) group galaxies into five bins: quiescent (i), post-starburst (ii), dusty galaxies with lower sSFRs (iii), dusty star-forming (iv), and non-dusty star-forming (v). These bins were created based on known correlations between galaxy properties and UVJ colors. For star-forming galaxies, A_V increases linearly with increasing $U-V$ and $V-J$. sSFR(SED) decreases along a direction perpendicular to this A_V sequence (i.e., $U-V$ increases and $V-J$ decreases as sSFR(SED) decreases; e.g., [Yano et al. 2016](#)). These relationships motivate the creation of bins (iii), (iv), and (v). Once a galaxy has stopped forming stars its colors will evolve towards the quiescent box. As galaxies age away from their star forming epochs, they move along the quiescent sequence in the UVJ diagram (i.e., increasing in $U-V$ and $V-J$ color). Therefore, bins (i) and (ii) comprise an age gradient for galaxies no longer forming stars (e.g., [Whitaker et al. 2012](#); [Bell et al. 2019](#)).

The left panel of Figure 4 gives the UVJ diagram with these galaxy bins from [Zick et al. \(2018\)](#) identified. The region occupied by quiescent galaxies following the definition from [Williams et al. \(2009\)](#) is also included. It can be seen that GOODS-S 43114 falls well within the post-starburst bin (i.e., bin (ii)), while GOODS-S 43683 falls at the intersection of bins (i), (ii), and (iii) — reflecting its redder $V-J$ color. The SFR(SED) and sSFR(SED) values in both galaxies indicate that these systems are not currently forming stars at a rapid rate relative to their past averages. In addition, the characteristic shapes of the SEDs in the right panel of Figure 1 (specifically, the steep decline in flux density bluewards of ~ 4000 Å) suggests that both galaxies are in a post-starburst phase.

Figure 4 shows GOODS-S 43114 and GOODS-S 43683 on the

$H\delta_A$ vs. D_n4000 diagram. Also included are the five datapoints from Zick et al. (2018) representing stacks of galaxies in each of the five UVJ bins, and tracks of SFH with $\tau = 0.1, 0.2,$ and 1.0 Gyr. To create these tracks, we use the code `python-FSPS`⁵ (Johnson et al. 2021a) which generates spectra for synthetic stellar populations using the FSPS library (Conroy & Gunn 2010). For these models, we make similar assumptions to those in our SED fitting (i.e., a Chabrier 2003 stellar initial mass function (IMF), a Calzetti et al. 2000 dust attenuation curve, and delayed- τ SFHs).

We find that both GOODS-S 43114 and GOODS-S 43683 fall within the uncertainties of bin (ii) on the $H\delta_A$ vs. D_n4000 diagram. Based on the elevated $H\delta_A$ value found for both galaxies, it is likely that the spectra are dominated by A-type stars, which implies that star formation shut down in a time frame where the O- and B-type stars no longer exist but the A-type stars still remain. In addition, the fact that the D_n4000 feature and t/τ ratio are very similar for both galaxies indicates that both galaxies have similar stellar population ages, and therefore shut off star formation at roughly the same time.

This approximate synchronization is confirmed in Figure 5, which shows the estimated SFHs for GOODS-S 43114 and GOODS-S 43683 obtained using the FAST best-fit SFR(SED), t , and τ values from Table 1. Also shown are the SFHs estimated using Prospector⁶ (Johnson et al. 2021b), which utilizes “non-parametric” SFHs (i.e., models that do not assume a functional form for SFR as a function of time). For the Prospector modeling, we adopt the FSPS stellar library (Conroy & Gunn 2010) and assume a Chabrier (2003) IMF with a $300 M_\odot$ upper limit, a Calzetti et al. (2000) dust attenuation curve, and fix the metallicity to solar (0.019). We split the non-parametric SFH into eight time bins, assume constant star formation in each bin, and adopt a built-in continuity prior that weights against sharp variations in SFR between adjacent time bins (see Tacchella et al. 2022 for discussion on how non-parametric models are influenced by the choice in priors used). The first two age bins are fixed at 0-30 Myr and 30-100 Myr, with the remaining bins spaced logarithmically from 100 Myr to the age of the universe at $z = 1.89$. We include an additional prior placing an upper limit of $10 M_\odot \text{ yr}^{-1}$ on the SFR in the earliest time bins ($z > 4$) and also the time bin closest to the epoch of observation, for consistency with the strong Balmer absorption observed in the J -band spectrum of GOODS-S 43114.

While there are differences between the inferred SFHs using FAST and Prospector in detail, in terms of the precise SFH shape and lookback time of peak star formation, we emphasize the qualitative similarities here. Both the FAST delayed- τ and Prospector non-parametric SFHs suggest that the onsets and peaks of the most recent bursts of star formation in these two galaxies are synchronized to within a few hundred Myrs of each other. There is uncertainty between the models on the exact timing of the onset and peak of the burst, as well as peak level of SFR; however, it is clear that the star-forming events in these two galaxies are linked. We note that van Dokkum & Brammer (2010) model the multi-wavelength SED and rest-optical spectrum of GOODS-S 43114 using simple top-hat SFHs, also finding that star formation recently ceased and must have been significantly higher in the past. In Section 4.1, we discuss the impact of the galaxy interaction on the star-formation histories of GOODS-S 43114 and GOODS-S 43683.

3.2 Second Velocity Moment & Dynamical Mass of GOODS-S 43114

As discussed, the MOSFIRE J -band spectrum enables an estimate of the dynamical properties of GOODS-S 43114. Using `ppxf`, we find $\sigma_e = 166 \pm 21 \text{ km s}^{-1}$. Combining equations 2 and 3 results in $\log_{10}(M_{\text{dyn}}/M_\odot) = 11.16 \pm 0.11$ for GOODS-S 43114. Figure 6 shows the fit to the J -band spectrum with the residuals of the fit. The dynamical mass estimate is approximately a factor of three lower than the M_* measurement, which raises concerns about the validity the method used to derive the dynamical mass. We discuss the discrepancy between the mass estimates in Section 4.2. Since we do not have MOSFIRE spectra of GOODS-S 43683, we cannot estimate σ_e and subsequently M_{dyn} for this galaxy.

4 DISCUSSION

4.1 State of the Merger

Comparing observations to galaxy simulations is important for connecting isolated snapshots of galaxies with the larger evolutionary picture. Numerical simulations help improve our understanding of the both the merger process and the significance of mergers to galaxy formation (e.g., Barnes & Hernquist 1991, 1996; Di Matteo et al. 2007; Cox et al. 2008; Di Matteo et al. 2008; Moreno et al. 2015; Blumenthal & Barnes 2018). State-of-the-art galaxy formation simulations have the resolution to capture feedback-regulated star formation and multi-phase structures within the interstellar medium (ISM; e.g., FIRE-1 and FIRE-2; Hopkins et al. 2011, 2014, 2018), and, therefore, how these galaxy processes and components will respond to a merger event. For example, recent merger modeling with FIRE-2 (Moreno et al. 2019) probes enhanced star formation and ISM gas content during the merger process. In this work, three key stages in a merger are identified: the first pericentric passage, the second pericentric passage, and coalescence. The time between the first and second pericentric passage is ~ 2 -2.5 Gyr while the time between the second pericentric passage and coalescence is $\lesssim 0.5$ Gyr. In addition, Moreno et al. (2019) suggest that SFR spikes at each of these three events with a significant decrease in SFR during the large time gap between the pericentric passages. The SFR stays elevated in the short time between second pericentric passage and coalescence.

One important caveat to note is that Moreno et al. (2019) simulated mergers for local galaxies. Additionally, the masses of the galaxies in the Moreno et al. (2019) fiducial model are an order of magnitude lower than those of the galaxy pair in this study. Such differences (in addition to the detailed orbital configurations of the simulated and observed mergers) will likely result in different absolute timescales for the merger and the corresponding rise and fall in the SFRs of the merging galaxies. While the precise timescales between pericentric passages and the magnitude of the SFR spikes resulting from these events may be different for the high-mass $z \sim 2$ galaxy pair investigated in this study, we assume that the basic pattern of galaxies having an elevation in SFR at each pericentric passage with a decrease in-between still applies (see also, e.g., Cox et al. 2008; Hopkins et al. 2008). Therefore, we only make a qualitative comparison with the Moreno et al. (2019) fiducial model, focusing generally on the phase of the merging process in which GOODS-S 43114 and GOODS-S 43683 are observed based on their galaxy properties and recent SFHs at the epoch of observation.

For the merger analyzed here, the low SFR(SED) and sSFR(SED) values of GOODS-S 43114 and GOODS-S 43683 com-

⁵ <https://dfm.io/python-fsps/current/>

⁶ <https://prospect.readthedocs.io/en/latest/>

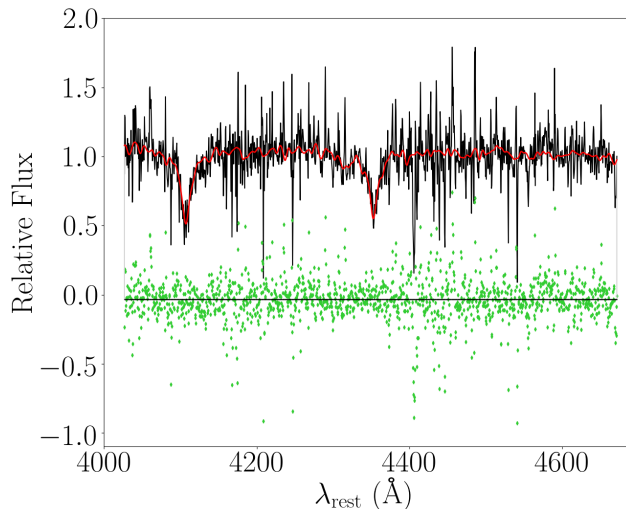


Figure 6. Fit to the MOSFIRE J -band spectrum of GOODS-S 43114 using `ppxf` to estimate σ_e . The MOSFIRE spectrum is shown in black while the fit is shown in red. The residuals to the fit are given as green points. The spectrum and fit are centered at a relative flux of 1, while the residuals are centered at a relative flux of 0.

pared to their past averages indicate that these galaxies are not observed during one of the merger phases corresponding to elevated star formation. Additionally, Figure 5 indicates that both galaxies had much higher SFRs in the past. The tidal tail features exhibited by both galaxies suggest that this system has undergone at least one pericentric passage. Due to the depressed SFR at the date of observation, it is likely that the merger is observed between the first and second pericentric passages. Furthermore, the SFHs shown in Figure 5 show that the recent burst of star formation began ~ 0.5 – 1 Gyr (depending on the model) before the data of observation, suggesting that the first pericentric passage occurred around that time.

The elevated $H\delta_A$ values and SFHs shown in Figure 5 for GOODS-S 43114 and GOODS-S 43683 suggest that both galaxies have recently shut off their star formation. The main sequence lifespan of O-, B- and A-type stars are ~ 0.01 , ~ 0.1 and ~ 1 Gyr, respectively. A-type stars will dominate the stellar spectrum during their main sequence lifetime after the main sequence lifetimes of O- and B-type stars have passed. For both the FAST and Prospector models, the time since peak star formation is longer than the O- and B-star lifetime, corresponding to a phase when the light from A stars will contribute significantly to the rest-frame optical spectrum.

Combining all of the information gained from the SED fitting with inferences from the models indicates that these galaxies recently underwent their first pericentric passage and are moving away from each other. Detailed velocity mapping would be needed to confirm this theory, and such data currently do not exist for this merger.

As discussed earlier in this section, it is difficult to make direct comparisons with simulated mergers as a variety of parameters can alter the timescales and elevation/depression of star formation. Aside from galaxy mass and redshift, additional caveats are differences in other merger parameters relative to the Moreno et al. (2019) fiducial model. For example, different orientations and levels of gas content in the galaxies can affect the time between pericentric passages and the elevation in SFR. Fensch et al. (2017) show that mergers with 10% gas fractions characteristic of $z \sim 0$ galaxies undergo a larger increase in SFR compared to mergers of more gas-

rich (60% gas fraction) systems characteristic of $z \sim 2$ galaxies. Along the same lines, Scudder et al. (2015) find an anti-correlation between SFR enhancement during the merger and the initial gas fraction. This dependence of SFR enhancement during the merger on gas content can be attributed to a correlation between ISM turbulence and central gas inflow during the merger. In the Fensch et al. (2017) models, both the local-analog gas-poor mergers and $z \sim 2$ -analog gas-rich mergers display similar peak gas inflow rates that fuel star formation. The difference in SFR enhancement between the two scenarios is therefore due to the fact that the $z \sim 2$ -analog gas-rich galaxies begin the merging process with much higher gas gas reservoirs.

4.2 Implications of the Apparent Mass Discrepancy

The large discrepancy between M_* and M_{dyn} for GOODS-S 43114, in particular with $M_{\text{dyn}} < M_*$, raises concerns about the accuracy of these measurements. As stated in Section 2.3, our methodology for estimating M_* is robust. In Table 1, we list the M_* estimated from the delayed- τ model. Note that we experimented with other parametric SFHs (constant, exponentially rising, and exponentially falling), as well as a Prospector non-parametric model, and find similar M_* to that inferred from the delayed- τ model (i.e., the choice of a different SFH does not resolve the tension between the inferred stellar and dynamical masses. The SED is fit assuming a realistic delayed- τ SFH and we use 39 photometry points to constrain the shape of the SED. Additionally, we not only find consistent results using non-parametric modeling with the Prospector code, but also our estimate of M_* agrees within uncertainties with past studies (van Dokkum & Brammer 2010).

Therefore, it is likely that the M_{dyn} measurement is significantly underestimated. There is a straightforward explanation for how such an underestimate can arise. The axis ratio of the galaxy obtained from the best fit Sérsic model is 0.865 ± 0.004 . In one plausible scenario, this large axis ratio would result if GOODS-S 43114 is a roughly face-on disk. In such a geometry, the estimate of the second velocity moment (and subsequent M_{dyn} estimate) is biased low relative to the true value.

For a more in-depth estimate of M_{dyn} , we compute the dynamical mass of the galaxy by constructing a cylindrically-aligned Jeans Anisotropic Model (JAM_{cyl}; Cappellari 2008) of its Sérsic approximation. The advantage of this approach with respect to using a Sérsic-dependent virial equation is that JAM allows one to explore the effect of inclination as well as modelling the effect of the PSF and the kinematics extraction aperture. We first approximated a Sérsic profile with the index $n = 5.26$ given by van der Wel et al. (2014) with 30 Gaussians using the Multi-Gaussian Expansion (MGE) parametrization and the `mge_fit_1d` procedure⁷ of Cappellari (2002). Then we used the fitted MGE to compute the velocity second moment using the `jam_axi_proj` procedure in the Jeans Anisotropic Modelling (JAM) software package⁸ of Cappellari (2008). We also included a central black hole with a mass of 0.2% of the total mass of the Sérsic model. This value is half of the expected value in the local Universe (Kormendy & Ho 2013) and has minimal effect on the result. We adopted a unitary mass for the Sérsic model, and assumed both that mass follows light

⁷ We used v5.0 of the MgeFit Python package from <https://pypi.org/project/mgefit/>

⁸ We used v6.3 of the JamPy Python package from <https://pypi.org/project/jampy/>

and a typical anisotropy $\beta = 0.2$ (Figure 9 of Cappellari 2016) to compute the PSF-convolved JAM model predictions for the line-of-sight velocity second moments $\overline{v_{\text{los},j}^2}$ on a dense grid of values covering the observed rectangular aperture over which the MOSFIRE spectrum was extracted. The model is placed at the angular-size distance (D_A) for the adopted standard cosmology. We then co-added these luminosity-weighted values inside the aperture as $\overline{v_{\text{los}}^2} = \Sigma_j I_j \overline{v_{\text{los},j}^2} / \Sigma_j I_j$, where I_j is the PSF-convolved galaxy surface brightness at the j -th grid location.

Given the adopted unitary mass of the JAM model and the proportionality between masses and squared velocities, the galaxy dynamical mass can be computed as $M_{\text{JAM}} = V_{\text{rms}}^2 / \overline{v_{\text{los}}^2}$, where V_{rms} is the observed velocity dispersion fitted by pPXF from the MOSFIRE spectrum, which approximates the luminosity-weighted second velocity moments inside the aperture (see discussion after equation 29 of Cappellari et al. 2013). The fitted dynamical mass physically represents the stellar mass of the galaxy, under the assumption that the stellar mass follows the light and the M/L has the same value as its average $(M/L)(r < R_{\text{ap}})$ inside the region $R_{\text{ap}} \lesssim 1.35R_e$ covered by the MOSFIRE kinematics:

$$M_{\text{JAM}} \approx L_{\text{Ser}} \times (M/L)(r < R_{\text{ap}}) \quad (4)$$

If the galaxy contains dark matter, then M_{JAM} should be decreased by a fraction $1 - f_{\text{DM}}(r = R_{\text{ap}})$ (equation 23 of Cappellari et al. 2013) to obtain an estimate of the galaxy stellar mass.

As extreme cases, we obtained $\log_{10}(M_{\text{JAM}}/M_{\odot}) = 11.19 \pm 0.10$ when assuming the galaxy has the intrinsic axial ratio $q_{\text{intr}} = 0.2$ of a flat stellar disk, in which case it is seen at an inclination $i = 31^\circ$, and $\log_{10}(M_{\text{JAM}}/M_{\odot}) = 11.06 \pm 0.10$ when assuming the galaxy is edge-on ($i = 90^\circ$) and has the same $q_{\text{intr}} = 0.87$ as the observed isophotes. We obtained insignificant differences in the two extreme assumptions that the MOSFIRE slit was aligned with either the major or minor projected axis of the galaxy. As a final test, we disregard the observed axial ratio and assume as the most extreme case that the galaxy is perfectly face-on, still with $q_{\text{intr}} = 0.2$ and anisotropy $\beta = 0.2$. This unrealistic scenario results in $\log_{10}(M_{\text{JAM}}/M_{\odot}) = 11.44$, still less than the measured M_* from FAST. Therefore, the discrepancy between M_* and M_{dyn} cannot be resolved by simply taking into consideration the observed geometry of the galaxy. Further investigation into solving this mass inconsistency is outside the scope of this paper, but will likely need to incorporate the effect of the merger on the internal dynamics of GOODS-S 43114.

Better consistency between dynamical and stellar mass measurements has been found in other studies of high-redshift quiescent galaxies. For example, van de Sande et al. (2013) find dynamical masses $\sim 15\%$ larger than stellar masses for a sample of 5 massive ($\log_{10}(M_*/M_{\odot}) > 11$) quiescent $z \sim 2$ galaxies. Additional studies of high-redshift, massive, quiescent galaxies find that M_* and M_{dyn} are roughly consistent with each other (e.g., Belli et al. 2017; Tanaka et al. 2019; Esdaile et al. 2021). However, the majority of galaxies in these earlier works have structural properties consistent with a spheroidal geometry.

GOODS-S 43114 is not unique for appearing disk-like at $z \sim 2$. For example, Newman et al. (2018a,b) identify four fast-rotating ($v/\sigma \sim 2$), disk-dominated quiescent galaxies at $z \sim 2$ with comparable stellar masses to those presented here (see also Toft et al. 2012, 2017). Newman et al. and Toft et al. argue that merger interactions will cause these massive galaxies evolve into the slow rotator ETGs that dominate above $M_* \gtrsim 2 \times 10^{11} M_{\odot}$ in the nearby Universe (see review by Cappellari 2016), given their already-extreme masses.

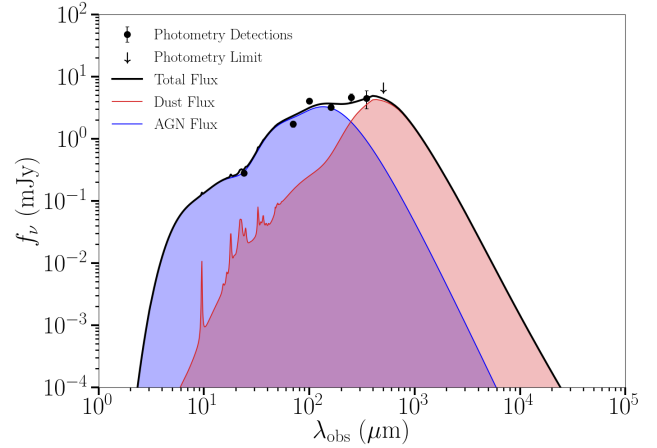


Figure 7. Fit to the *Spitzer*/MIPS 24 μm , *Herschel*/PACS 70, 100, and 160 μm , and *Herschel*/SPIRE 250, 350, and 500 μm far-IR flux measurements of the GOODS-S 43114+GOODS-S 43683 merging system. The galaxy pair is unresolved at these wavelengths, so the MIPS, PACS, and SPIRE measurements represent the summed contributions from both galaxies. The SED-fitting code, *Stardust*, is used to constrain the longer wavelength portion of the SED for the galaxy pair and estimate the AGN (blue) and dust (red) components of the total flux (black). The photometric data points and associated uncertainties are shown with black data points, except for the 500 μm SPIRE band which is given as an arrow because it is a limit.

GOODS-S 43114 is undergoing a major merger interaction with GOODS-S 43683, which will likely have a significant impact on its structural properties. Its subsequent star-formation history to the present day will depend on the details of the merger interaction with GOODS-S 43683 as well as the cool gas content in both galaxies. Accordingly, both GOODS-S 43114 and GOODS-S 43683 comprise compelling targets for observations of molecular gas (e.g., CO), in order to understand the fuel available for subsequent star formation.

4.3 Constraints from Far-IR and Radio Observations

Up until this point, the longest wavelength data analyzed here has been the IRAC Channel 4 band at 8 μm ($\sim 2.75 \mu\text{m}$ in the rest frame). In this section, we fold longer wavelength data into the discussion, specifically the 24 μm band from the Multiband Imaging Photometer for *Spitzer* (MIPS; Rieke et al. 2004) instrument on the *Spitzer Space Telescope* (Werner et al. 2004); the 70, 100, and 160 μm bands from the Photodetector Array Camera and Spectrometer (PACS; Poglitsch et al. 2010) and the 250, 350, and 500 μm bands from the Spectral and Photometric Imaging Receiver (SPIRE; Griffin et al. 2010) instruments on the *Herschel Space Observatory*; and the 1.4 GHz band from the *Very Large Array* (VLA; Perley et al. 2011; Miller et al. 2013; Biggs et al. 2011, Smail et al., private communication). We obtained MIPS data from Giavalisco et al. (2004), and PACS and SPIRE observations from Elbaz et al. (2011). These longer-wavelength data points more directly trace the dust content of galaxies and can reveal star formation and AGN activity that is severely obscured by dust at rest-frame UV through rest-frame near-IR wavelengths. For example, Smail et al. (1999) show in a sample of $z = 0.4$ cluster galaxies that some galaxies previously classified as post-starbursts from rest-frame optical data alone contain radio-bright components revealing previously unaccounted-for, obscured star formation.

Long wavelength observations of the merger system in fact re-

veal detections at mid- and far-IR wavelengths, indicating the presence of dust emission. However, the angular resolution of MIPS, PACS, and SPIRE is not sufficient to secure spatially-distinct of GOODS-S 43114 and GOODS-S 43683 (i.e., the two galaxies are blended together). Therefore, in this analysis, we attempt to constrain the total dust-obscured SFR and AGN contribution associated with the combined 43114+43683 system (as opposed to estimating the dust-obscured SFR and AGN contribution in each galaxy individually). We can use this combined SFR estimate to test if both galaxies are found in a post-starburst phase, even when long-wavelength data is taken into account. The methodology adopted here avoids uncertain assumptions about the distribution of mid-IR and far-IR flux between the two galaxies. We use the code *Stardust* (Kokorev et al. 2021) to model the observed mid- and far-IR SED of the 43114+43683 pair. The *Stardust* code is ideal for this analysis, given the known AGN detections of GOODS-S 43114 and GOODS-S 43683, because *Stardust* simultaneously accounts for the multi-wavelength contributions from stars, AGN, and infrared dust emission. Furthermore, *Stardust* does not require energy balance, thus allowing for additional star formation that is completely obscured at rest-frame UV through near-IR wavelengths (Kokorev et al. 2021). Note that we use the Mullaney et al. (2011) templates to fit the AGN component, the Draine & Li (2007); Draine et al. (2014) templates to fit the IR dust, and utilize Jin et al. (2018) for the deblending technique in the extraction of far-IR photometry.

Figure 7 shows the mid- and far-IR SED for the 43114+43683 merger system, along with the best-fit multi-component *Stardust* model. The blue shaded region identifies the portion of the SED attributed to light from the AGN ($L_{\text{IR,AGN}} = (1.14 \pm 0.02) \times 10^{12} L_{\odot}$) while the red shaded region identifies the portion attributed to dust emission that has been heated by the stellar population ($L_{\text{IR,SF}} = (3.1 \pm 0.6) \times 10^{11} L_{\odot}$, with an associated $M_{\text{dust}} = (2.8 \pm 0.5) \times 10^9 M_{\odot}$). The black curve represents the total AGN+dust SED. We find that the resultant SFR associated with the non-AGN portion of the IR SED is $31 \pm 6 M_{\odot} \text{ yr}^{-1}$, which is not significantly elevated compared with our FAST estimate ($\sim 16 M_{\odot} \text{ yr}^{-1}$). We note that the inferred 1.4 GHz flux density of $30 \pm 7 \mu\text{Jy}$ (while not included in the *Stardust* fitting) is entirely consistent with the best-fit AGN+dust model fit to the combined mid- and far-IR SED following the L_{IR} to radio correlation from Delhaize et al. (2017).

The SFR estimate inferred from the fit to the long-wavelength data, while larger than that inferred from the SED at *Spitzer*/IRAC and shorter wavelengths, is also significantly lower than the peak SFRs inferred several hundred Myr in the past from both FAST and *Prospector* (see Figure 5). Additionally, the higher SFR value from *Stardust* could be due to a time lag, as the SFR estimated from long wavelengths is less responsive to recent changes in the SFR compared to the rest-optical regime. If the SFR of the system is actively decreasing, which is expected between the first and second pericentric passages (see Moreno et al. (2019)), the SFR estimated from dust could easily be larger than the SFR inferred from the rest-optical regime. Therefore, we conclude that the inclusion of the mid- and far-IR data does not change the principal conclusions of this work: both galaxies still appear to be in a post-starburst phase, which is consistent with multiple pieces of evidence (i.e., strong Balmer absorption lines and SFHs fit to rest-frame UV through rest-frame near-IR SEDs) presented in this study.

As we look ahead, JWST and/or ALMA will be needed to obtain distinct observations of GOODS-S 43114 and GOODS-S 43683 (i.e., not blended together) at long wavelengths. Such data will enable more robust constraints on the dust content, AGN activity, and obscured star formation, individually, in each galaxy. We

also note that van Dokkum & Brammer (2010) find evidence for faint spiral arms in the residuals of the F160W image of GOODS-S 43114, once the dominant compact core is subtracted off. The spatially-resolved *HST*/WFC3 grism spectrum of GOODS-S 43114 may suggest a faint level of residual star formation associated with these spiral arms.

5 SUMMARY

In this study we analyze high-quality Keck/MOSFIRE spectra and multi-wavelength photometry of a merger at $z = 1.89$ between two galaxies that host AGN: GOODS-S 43114 and GOODS-S 43683. Stellar Balmer absorption lines ($\text{H}\gamma$ and $\text{H}\delta$) are detected in the MOSFIRE *J*-band of GOODS-S 43114. Combining the high S/N spectra and broadband SED-fitting with insights from realistic galaxy merger simulations enables us to obtain and study the physical properties and SFHs of both galaxies in the merger pair as well as the current phase of the merger process.

The main results are as follows:

(i) Both merging galaxies have a close M_* ratio, indicating that this is a major merger. In addition, both galaxies have recently shut off their star formation as shown by their SFR(SED) and strong Balmer absorption lines.

(ii) The depressed star formation rates combined with the visible tidal tails imply that the galaxies have undergone their first pericentric passage. Modeling the SFHs suggests that the pericentric passage most likely happened ~ 0.5 -1 Gyr ago (approximately around the time of peak star formation of the system).

(iii) GOODS-S 43114 has a low inclination indicating that it is roughly a face-on disk based on its morphology and smaller than expected second velocity moment estimate. More robust modeling that takes into account the inclination and geometry of a face-on disk does not resolve the discrepancy between the dynamical and stellar masses. More work is needed to address this mass inconsistency. Galaxies that are massive ($\log_{10}(M_*/M_{\odot}) > 11$), disk-shaped, rotating, and quiescent at $z \sim 2$ are likely the progenitors of the most massive, spheroidal and slow-rotating elliptical galaxies present in the local universe. However, they must undergo significant structural evolution over the intervening ~ 10 Gyr.

(iv) Fitting the spatially-unresolved mid- and far-IR SED of the combined GOODS-S 43114 and GOODS-S 43683 system yields consistent conclusions to those obtained by fitting the rest-frame UV through near-IR data of the individual merging galaxies. Specifically, we still find that the GOODS-S 43114 and GOODS-S 43683 system is in a post-starburst phase with ongoing AGN activity, and significantly lower star formation at the epoch of observation compared to the past peak. One limitation of the longer wavelength data is that the $2''$ separation between GOODS-S 43114 and GOODS-S 43683 is smaller than the angular resolution of *Spitzer*/MIPS, and *Herschel*/PACS and SPIRE. JWST and/or ALMA observations are needed to study these galaxies in this long-wavelength regime individually.

Understanding the rapid onset and shut-down of star formation during mergers, especially at $z \sim 2$ (i.e., the peak epoch of star formation), is important for furthering our knowledge of how mergers affect the galactic baryon cycle. Comprehensive studies of individual mergers like the GOODS-S 43114/GOODS-S 43683 system can help further constrain simulations leading to a more accurate galaxy evolution models. For the merger pair analyzed in this work, space-based observations with the James Webb Space Telescope

will enable us to observe the full range of rest-optical emission-lines (e.g., $H\alpha$, $H\beta$, $[\text{O III}]\lambda\lambda 4960, 5008$, and $[\text{O II}]\lambda\lambda 3727, 3730$) that are currently hidden outside the windows of atmospheric transmission. Measurement of these emission-lines will greatly increase our knowledge of the merger, as they contain a wealth of information on AGN activity and gas outflows, as well as the physical properties of the ionized ISM.

ACKNOWLEDGEMENTS

We acknowledge support from NSF AAG grants AST1312780, 1312547, 1312764, 1313171, 2009313, 2009085, 2009278, grant AR-13907 from the Space Telescope Science Institute, and grant NNX16AF54G from the NASA ADAP program. We also acknowledge a NASA contract supporting the “WFIRST Extragalactic Potential Observations (EXPO) Science Investigation Team” (15-WFIRST15-0004), administered by GSFC. Support for this work was also provided through the NASA Hubble Fellowship grant #HST-HF2-51469.001-A awarded by the Space Telescope Science Institute, which is operated by the Association of Universities for Research in Astronomy, Incorporated, under NASA contract NAS5-26555. We thank the 3D-*HST* collaboration, who provided spectroscopic and photometric catalogs used to select MOSDEF targets and to derive stellar population parameters. We acknowledge useful conversations with Ian Smail that benefited this work. This research made use of Astropy,⁹ a community-developed core Python package for Astronomy (Astropy Collaboration et al. 2013, 2018). Finally, we wish to extend special thanks to those of Hawaiian ancestry on whose sacred mountain we are privileged to be guests.

DATA AVAILABILITY

The data underlying this article will be shared on reasonable request to the corresponding author.

Facilities: Keck/MOSFIRE, SDSS

Software: Astropy (Astropy Collaboration et al. 2013, 2018), EAZY (Brammer et al. 2008), FAST (Kriek et al. 2009), IPython (Perez & Granger 2007), JAMPy (Cappellari 2008), Matplotlib (Hunter 2007), MGEfit (Cappellari 2002), NumPy (van der Walt et al. 2011; Harris et al. 2020), Pandas (Wes McKinney 2010; The pandas development team 2020), pPXF (Cappellari & Emsellem 2004; Cappellari 2017), Prospector (Johnson et al. 2021b), python-FSPS (Johnson et al. 2021a), SciPy (Oliphant 2007; Millman & Aivazis 2011; Virtanen et al. 2020), Starburst (Kokorev et al. 2021)

REFERENCES

Abazajian K. N., et al., 2009, *ApJS*, 182, 543
 Asplund M., Grevesse N., Sauval A. J., Scott P., 2009, *ARA&A*, 47, 481
 Astropy Collaboration et al., 2013, *A&A*, 558, A33
 Astropy Collaboration et al., 2018, *AJ*, 156, 123
 Balestra L., et al., 2010, *A&A*, 512, A12
 Balogh M. L., Morris S. L., Yee H. K. C., Carlberg R. G., Ellingson E., 1999, *ApJ*, 527, 54
 Barnes J. E., Hernquist L. E., 1991, *ApJ*, 370, L65
 Barnes J. E., Hernquist L., 1996, *ApJ*, 471, 115
 Belli S., Newman A. B., Ellis R. S., 2017, *ApJ*, 834, 18

Belli S., Newman A. B., Ellis R. S., 2019, *ApJ*, 874, 17
 Biggs A. D., et al., 2011, *MNRAS*, 413, 2314
 Blumenthal K. A., Barnes J. E., 2018, *MNRAS*, 479, 3952
 Brammer G. B., van Dokkum P. G., Coppi P., 2008, *ApJ*, 686, 1503
 Calzetti D., Armus L., Bohlin R. C., Kinney A. L., Koornneef J., Storchi-Bergmann T., 2000, *ApJ*, 533, 682
 Cappellari M., 2002, *MNRAS*, 333, 400
 Cappellari M., 2008, *MNRAS*, 390, 71
 Cappellari M., 2016, *ARA&A*, 54, 597
 Cappellari M., 2017, *MNRAS*, 466, 798
 Cappellari M., Emsellem E., 2004, *PASP*, 116, 138
 Cappellari M., et al., 2006, *MNRAS*, 366, 1126
 Cappellari M., et al., 2013, *MNRAS*, 432, 1709
 Chabrier G., 2003, *PASP*, 115, 763
 Cibinel A., et al., 2019, *MNRAS*, 485, 5631
 Conroy C., Gunn J. E., 2010, *ApJ*, 712, 833
 Cox T. J., Jonsson P., Somerville R. S., Primack J. R., Dekel A., 2008, *MNRAS*, 384, 386
 Dai Y. S., et al., 2021, *ApJ*, 923, 156
 Delhaize J., et al., 2017, *A&A*, 602, A4
 Di Matteo P., Combes F., Melchior A. L., Semelin B., 2007, *A&A*, 468, 61
 Di Matteo P., Bournaud F., Martig M., Combes F., Melchior A. L., Semelin B., 2008, *A&A*, 492, 31
 Draine B. T., Li A., 2007, *ApJ*, 657, 810
 Draine B. T., et al., 2014, *ApJ*, 780, 172
 Duncan K., et al., 2019, *ApJ*, 876, 110
 Elbaz D., et al., 2011, *A&A*, 533, A119
 Ellison S. L., Patton D. R., Simard L., McConnachie A. W., 2008, *AJ*, 135, 1877
 Esdaile J., et al., 2021, *ApJ*, 908, L35
 Fensch J., et al., 2017, *MNRAS*, 465, 1934
 Gialvalisco M., et al., 2004, *ApJ*, 600, L93
 Griffin M. J., et al., 2010, *A&A*, 518, L3
 Grogin N. A., et al., 2011, *ApJS*, 197, 35
 Harris C. R., et al., 2020, *Nature*, 585, 357–362
 Hopkins P. F., Hernquist L., Cox T. J., Kereš D., 2008, *ApJS*, 175, 356
 Hopkins P. F., et al., 2010, *ApJ*, 724, 915
 Hopkins P. F., Quataert E., Murray N., 2011, *MNRAS*, 417, 950
 Hopkins P. F., Kereš D., Oñorbe J., Faucher-Giguère C.-A., Quataert E., Murray N., Bullock J. S., 2014, *MNRAS*, 445, 581
 Hopkins P. F., et al., 2018, *MNRAS*, 480, 800
 Horstman K., et al., 2021, *MNRAS*, 501, 137
 Hunter J. D., 2007, *Computing in Science & Engineering*, 9, 90
 Jin S., et al., 2018, *ApJ*, 864, 56
 Johnson B., et al., 2021a, *dfm/python-fsps: python-fsps v0.4.1rc1*, doi:10.5281/zenodo.4737461, <https://doi.org/10.5281/zenodo.4737461>
 Johnson B. D., Leja J., Conroy C., Speagle J. S., 2021b, *ApJS*, 254, 22
 Kartaltepe J. S., et al., 2015, *ApJS*, 221, 11
 Koekemoer A. M., et al., 2011, *ApJS*, 197, 36
 Kokorev V. I., et al., 2021, *ApJ*, 921, 40
 Kormendy J., Ho L. C., 2013, *ARA&A*, 51, 511
 Kriek M., et al., 2008, *ApJ*, 677, 219
 Kriek M., van Dokkum P. G., Labbé I., Franx M., Illingworth G. D., Marchesini D., Quadri R. F., 2009, *ApJ*, 700, 221
 Kriek M., et al., 2015, *ApJS*, 218, 15
 Kriek M., et al., 2016, *Nature*, 540, 248
 Lofthouse E. K., Kaviraj S., Conselice C. J., Mortlock A., Hartley W., 2017, *MNRAS*, 465, 2895
 Lotz J. M., Jonsson P., Cox T. J., Croton D., Primack J. R., Somerville R. S., Stewart K., 2011, *ApJ*, 742, 103
 Luo B., et al., 2008, *ApJS*, 179, 19
 Man A. W. S., Toft S., Zirm A. W., Wuyts S., van der Wel A., 2012, *ApJ*, 744, 85
 Man A. W. S., Zirm A. W., Toft S., 2016, *ApJ*, 830, 89
 Mantha K. B., et al., 2018, *MNRAS*, 475, 1549
 McLean I. S., et al., 2012, in *Ground-based and Airborne Instrumentation for Astronomy IV*. p. 84460J, doi:10.1117/12.924794

⁹ <http://www.astropy.org>

Miller N. A., et al., 2013, *ApJS*, **205**, 13

Millman K. J., Aivazis M., 2011, *Computing in Science & Engineering*, **13**, 9

Momcheva I. G., et al., 2016, *ApJS*, **225**, 27

Moreno J., Torrey P., Ellison S. L., Patton D. R., Bluck A. F. L., Bansal G., Hernquist L., 2015, *MNRAS*, **448**, 1107

Moreno J., et al., 2019, *MNRAS*, **485**, 1320

Mullaney J. R., Alexander D. M., Goulding A. D., Hickox R. C., 2011, *MNRAS*, **414**, 1082

Muzzin A., Marchesini D., van Dokkum P. G., Labbé I., Kriek M., Franx M., 2009, *ApJ*, **701**, 1839

Newman A. B., Belli S., Ellis R. S., Patel S. G., 2018a, *ApJ*, **862**, 125

Newman A. B., Belli S., Ellis R. S., Patel S. G., 2018b, *ApJ*, **862**, 126

Oliphant T. E., 2007, *Computing in Science & Engineering*, **9**, 10

Patton D. R., Ellison S. L., Simard L., McConnachie A. W., Mendel J. T., 2011, *MNRAS*, **412**, 591

Patton D. R., Torrey P., Ellison S. L., Mendel J. T., Scudder J. M., 2013, *MNRAS*, **433**, L59

Perez F., Granger B. E., 2007, *Computing in Science & Engineering*, **9**, 21

Perley R. A., Chandler C. J., Butler B. J., Wrobel J. M., 2011, *ApJ*, **739**, L1

Poglitsch A., et al., 2010, *A&A*, **518**, L2

Rieke G. H., et al., 2004, *ApJS*, **154**, 25

Schawinski K., Treister E., Urry C. M., Cardamone C. N., Simmons B., Yi S. K., 2011, *ApJ*, **727**, L31

Scudder J. M., Ellison S. L., Torrey P., Patton D. R., Mendel J. T., 2012, *MNRAS*, **426**, 549

Scudder J. M., Ellison S. L., Momjian E., Rosenberg J. L., Torrey P., Patton D. R., Fertig D., Mendel J. T., 2015, *MNRAS*, **449**, 3719

Skelton R. E., et al., 2014, *ApJS*, **214**, 24

Smail I., Morrison G., Gray M. E., Owen F. N., Ivison R. J., Kneib J. P., Ellis R. S., 1999, *ApJ*, **525**, 609

Tacchella S., et al., 2022, *ApJ*, **927**, 170

Tanaka M., et al., 2019, *ApJ*, **885**, L34

Tasca L. A. M., et al., 2014, *A&A*, **565**, A10

The pandas development team 2020, pandas-dev/pandas: Pandas, doi:10.5281/zenodo.3509134, <https://doi.org/10.5281/zenodo.3509134>

Tody D., 1986, in Crawford D. L., ed., *Society of Photo-Optical Instrumentation Engineers (SPIE) Conference Series Vol. 627, Instrumentation in astronomy VI*. p. 733, doi:10.1117/12.968154

Tody D., 1993, in Hanisch R. J., Brissenden R. J. V., Barnes J., eds, *Astronomical Society of the Pacific Conference Series Vol. 52, Astronomical Data Analysis Software and Systems II*. p. 173

Toft S., Gallazzi A., Zirm A., Wold M., Zibetti S., Grillo C., Man A., 2012, *ApJ*, **754**, 3

Toft S., et al., 2017, *Nature*, **546**, 510

Vazdekis A., Sánchez-Blázquez P., Falcón-Barroso J., Cenarro A. J., Beasley M. A., Cardiel N., Gorgas J., Peletier R. F., 2010, *MNRAS*, **404**, 1639

Ventou E., et al., 2017, *A&A*, **608**, A9

Virtanen P., et al., 2020, *Nature Methods*, **17**, 261

Werner M. W., et al., 2004, *ApJS*, **154**, 1

Wes McKinney 2010, in Stéfan van der Walt Jarrod Millman eds, *Proceedings of the 9th Python in Science Conference*. pp 56 – 61, doi:10.25080/Majora-92bf1922-00a

Whitaker K. E., Kriek M., van Dokkum P. G., Bezanson R., Brammer G., Franx M., Labbé I., 2012, *ApJ*, **745**, 179

Williams R. J., Quadri R. F., Franx M., van Dokkum P., Labbé I., 2009, *ApJ*, **691**, 1879

Williams R. J., Quadri R. F., Franx M., 2011, *ApJ*, **738**, L25

Wilson T. J., et al., 2019, *ApJ*, **874**, 18

Worthey G., Ottaviani D. L., 1997, *ApJS*, **111**, 377

Yano M., Kriek M., van der Wel A., Whitaker K. E., 2016, *ApJ*, **817**, L21

Zick T. O., et al., 2018, *ApJ*, **867**, L16

van Dokkum P. G., Brammer G., 2010, *ApJ*, **718**, L73

van de Sande J., et al., 2013, *ApJ*, **771**, 85

van der Walt S., Colbert S. C., Varoquaux G., 2011, *Computing in Science & Engineering*, **13**, 22

van der Wel A., et al., 2012, *ApJS*, **203**, 24

van der Wel A., et al., 2014, *ApJ*, **788**, 28

This paper has been typeset from a $\text{\TeX}/\text{\LaTeX}$ file prepared by the author.