



ORIGINAL RESEARCH ARTICLE

A method for using monthly average temperatures in phenology models for grapevine (*Vitis vinifera* L.)

Omar Garcia-Tejera^{1,2,10*}, Raúl Marcos-Matamoros^{3,4}, Boris Basile⁵, Alessandro Mataffo⁵, Pasquale Scognamiglio⁵, Henar Prieto⁶, Luis Mancha⁶, Inês Cabral⁷, Jorge Queiroz⁷, Joana Valente⁸, Fernando Alves⁸, Nube González-Reviriego³, Sara Hernández-Barrera⁹, Mercè Mata¹⁰ and Joan Girona¹⁰

¹ Universidad de La Laguna, Departamento de Ingeniería Agraria y del Medio Natural. Ctra. Geneto, 2, La Laguna, 38200 Tenerife, Spain

² Instituto de Agricultura Sostenible-CSIC, Av. Menéndez Pidal s/n, 14080 Cordoba, Spain

³ Barcelona Supercomputing Center (BSC), c/Jordi Girona, 29, 08034 Barcelona, Spain

⁴ University of Barcelona, Faculty of Physics, c/Martí i Franquès 1, 08028 Barcelona, Spain

⁵ Department of Agricultural Sciences, University of Naples Federico II, Portici (Napoli), Italy

⁶ Center for Scientific and Technological Research of Extremadura (CICYTEX). Agricultural Research Institute "Finca La Orden-Valdesequera". Highway A-5 km. 372, 06187 Guadajira (Badajoz), Spain

⁷ GreenUPorto – Sustainable Agrifood Production Research Centre / Inov4Agro, DGAOT, Faculty of Sciences of University of Porto, Campus de Vairão, Rua da Agrária, 747, 4485-646 Vairão, Portugal

⁸ Symington Family Estates, Vinhos, S.A., Travessa Barão de Forrester 86, 4400-034 Vila Nova de Gaia, Portugal

⁹ Instituto Tecnológico y de Energías Renovables, S.A. (ITER), Polígono Industrial de Granadilla s/n, 38600 Granadilla (Santa Cruz de Tenerife), Spain

¹⁰ Efficient Use of Water Program, Institut de Recerca i Tecnologia Agroalimentàries (IRTA), Parc de Gardeny, Edifici Fruitcentre, 25003 Lleida, Spain



*correspondence:
ogarcia@ias.csic.es

Associate editor:
Daniel Molitor



Received:
11 February 2022

Accepted:
17 October 2022

Published:
21 November 2022



This article is published under the **Creative Commons licence (CC BY 4.0)**.

Use of all or part of the content of this article must mention the authors, the year of publication, the title, the name of the journal, the volume, the pages and the DOI in compliance with the information given above.

ABSTRACT

In recent years, there have been increasing efforts to link phenology models with seasonal climate predictions in so-called Decision Support Systems (DSS) to tailor crop management strategies. However, temporal discrepancies between phenology models with temperature data gathered on a daily basis and seasonal forecasting systems providing predictability on monthly scales have limited their use. In this work, we present a novel methodology to use monthly average temperature data in phenology models. Briefly stated, we modelled the timing of the appearance of specific grapevine phenological phases using monthly average temperatures. To do so, we computed the cumulative thermal time (S_f) and the number of effective days per month (eff_d). The eff_d is the number of days in a month on which temperatures would be above the minimum value for development (T_b). The calculation of eff_d is obtained from a normal probability distribution function derived from historical weather records. We tested the methodology on four experimental plots located in different European countries with contrasting weather conditions and for four different grapevine cultivars. The root mean square deviation (RMSD) ranged from 4 to 7 days for all the phenological phases considered, at all the different sites, and for all the cultivars. Furthermore, the bias of observed vs predicted comparisons was not significantly different when using either monthly mean or daily temperature values to model phenology. This new methodology, therefore, provides an easy and robust way to incorporate monthly temperature data into grapevine phenology models.

KEYWORDS: phenology modelling, grapevine, seasonal, forecast

INTRODUCTION

“Phenological development is the most important attribute of crop adaptation” (Sadras *et al.*, 2009). Knowing the phenology of a plant helps to understand the climatic limitations and yield potential of a crop (Jones and Davis, 2000; Ritchie and Nesmith, 1991). Moreover, from a crop management perspective, knowledge of plant phenology helps to plan field tasks like pesticide applications, pruning or irrigation based on plant water demands (Jones and Davis, 2000). It is not, therefore, surprising that historically speaking, there has been huge interest in modelling plant phenology (Chuine *et al.*, 2013; Wang, 1960).

In addition, phenological modelling is a very useful tool for studying the response of plant development to climate variability. It is well known that plant development is almost proportional to temperature (Ritchie and Nesmith, 1991). In grapevines, several approaches have been proposed to model phenology based on the calculation of thermal time (Parker *et al.*, 2013; Parker *et al.*, 2011). Thermal time computes the time of the year when a phenological phase takes place based on the total accumulated temperature above a threshold. The thresholds refer to a temperature below which development ceases, the base temperature (T_b) (Parker *et al.*, 2011; Ritchie and Nesmith, 1991).

The main advances in phenology modelling took place in the last part of the 20th century (Chuine *et al.*, 2013). Interest was stimulated by increasing concerns about global warming (Chuine *et al.*, 2013). Nowadays, the negative effects of global warming are more evident than ever. For instance, some of the premium wine regions in Europe have already passed their optimum temperature for growing (Jones *et al.*, 2005), and this trend is expected to continue in the future. IPCC projections present a global scenario in which temperatures will probably rise by more than the projected 1.5 °C (RCP4.5, RCP6.0, and RCP8.5) threshold by the end of the present century. This will also be accompanied by an increase in the frequency of extreme weather events (IPCC, 2014; IPCC, 2018). These changes have created a high degree of uncertainty in crop management as yields and berry quality may be compromised (Jones and Davis, 2000; Jones *et al.*, 2005). Faced with such uncertainty, the thermal time approach has been introduced, in combination with weather forecasting, to predict short-term phenology.

Over longer time scales, seasonal predictions have been highlighted as a potential planning tool for the agriculture sector (Hansen *et al.*, 2011) and phenology in particular (Ceglar and Toreti, 2021). Seasonal predictions are forecasts of climate conditions for periods ranging from one month to one year into the future. These forecasts are possible due to the existence of slowly evolving systems (such as oceans, snow cover, arctic ice, etc.) that interact with the atmosphere and favour certain states as opposed to others (see Hansen *et al.* (2011) or Doblas-Reyes *et al.* (2013)). Within this framework, the capacity to use seasonal forecasts to anticipate temperature behaviour several months into the future could potentially place phenological predictions at the forefront of

efforts to mitigate the negative effects of climate change in agriculture. Examples of the use of seasonal forecasts include adjusting sowing dates or predicting the appearance of pests and diseases and can be found in the existing literature (Hansen and Indeje, 2004; Régnière and Bolstad, 1994; Sporleder *et al.*, 2008). In the case of grapevines, Santos *et al.* (2020) used seasonal forecasts to estimate yields in the Douro Region of Portugal. However, to the best of our knowledge, and as also highlighted by Santos *et al.* (2020), there has been no published information about the use of seasonal forecasts to predict grapevine phenology. Probably, the lack of adoption of seasonal forecasts to model phenology has been due to both the intrinsic uncertainty of this information, highly dependent on region, variable and season (Weisheimer and Palmer, 2014), as well as the temporal mismatch between the predictability provided by seasonal forecasts and the data required by grapevine phenology models. Although seasonal forecast systems can provide daily data, predictability on seasonal scales is centred on monthly to multi-month scales, so the sign is displayed in these aggregations (Doblas-Reyes *et al.*, 2013). However, seasonal forecasting systems suffer uncertainties and biases in their predictions; these need to be corrected before they can be used (Doblas-Reyes *et al.*, 2006). The existence of this temporal gap between phenology models, which requires daily or sub-daily temperature data, and seasonal forecasts presents a hurdle to providing seasonal phenology forecasts that can be used as a decision-making tool for grapevine management.

The objective of the present paper is to compare the performance of a phenology model when using either daily average temperatures or to use a novel methodology to digest monthly average temperatures. The robustness of the proposed approach is tested using a multiple-year phenological dataset collected from four grapevine cultivars grown in four different areas of Europe.

MATERIALS AND METHODS

1. Phenology forecasts

To test the performance of the methodology proposed, we used the Spring Warming (SW) model (Hunter and Lechowicz, 1992). The SW model has been widely used in grapevines (Costa *et al.*, 2019; Parker *et al.*, 2011; Zapata *et al.*, 2017). The model calculates the accumulated thermal time (S_p , °C d) for a given period as the sum of the development rate $R_f(\bar{T}_a)$ computed from daily average temperatures (\bar{T}_a). The model requires three parameters: base temperature (T_b), thermal time or forcing units required to reach a phenology stage (F^*), and starting date to accumulate temperature (t_0).

$$(1) R_f(\bar{T}_a) = \begin{cases} 0 & \text{if } \bar{T}_a \leq T_b \\ \bar{T}_a - T_b & \text{if } \bar{T}_a > T_b \end{cases}$$

$$(2) S_f = \sum_{t_0}^y R_f(\bar{T}_a) \geq F^*$$

where y is the date when the target phenological event occurs.

2. Estimation of phenology forecast from monthly mean temperatures

As previously indicated, the thermal time model requires daily values of mean air temperature to compute $R_f(\bar{T}_a)$, but the objective of our research is to model phenology using average monthly temperatures (\bar{T}_m). To address this, we propose the monthly downscaling approach (DMA). The DMA calculates the S_f from the rate of development computed from \bar{T}_m and the number of effective days per month (eff_d). We define the eff_d as the number of days in a particular month that had a daily temperature above T_b .

$$(3) R_f(\bar{T}_m) = \begin{cases} T_b eff_d & \text{if } \bar{T}_m \leq T_b \\ (\bar{T}_m - T_b) eff_d & \text{if } \bar{T}_m > T_b \end{cases}$$

$$(4) S_f = \sum_{m=1}^n R_f(\bar{T}_m) \geq F^*$$

where n is the number of months, m is the starting month and $R_f(\bar{T}_m)$ is the rate of development of the m^{th} month using a monthly mean temperature. The eff_d was calculated as follows: first, we used historical weather records to obtain the standard deviation of the monthly temperature distributions (σ_{T_m}). Then, we computed the cumulative distribution function (cdf) for each month, from σ_{T_m} and T_b . The eff_d was obtained by multiplying the number of days of that month (n_{days}) by 1 minus cdf .

$$(5) eff_d = n_{days} [1 - cdf(\bar{T}_m, \sigma_{T_m}, T_b)]$$

3. Site description

The analysis was performed at four experimental plots located in three different countries. The experimental plots were: Vilarica (Portugal), Raimat (Spain), La Orden (Spain), and Mirabella Eclano (Italy) (Figure 1). The model was validated for the following four cultivars of *Vitis vinifera* L.: ‘Touriga Nacional’, ‘Tempranillo’, ‘Aglianico’, and ‘Chardonnay’. At each experimental plot, the phenology was recorded every week. The phenology was tracked according to the scale proposed by Baggolini (1952) for bud break, bloom, fruit set, and veraison. Weather data were retrieved from nearby

weather stations; these either belonged to the winery itself or were public. At each site, the plants were managed according to standard local winery practices. Table 1 summarises the information obtained at the different sites.

4. Calibration of the SW model

We carried out a specific calibration of the SW model for each cultivar and site. For each phenological phase and year, we calculated S_f from Equation 1 by computing $R_f(\bar{T}_a)$ from t_0 until the recorded date of the phenological phase in the corresponding year. The F^* for the corresponding phenology phase was calculated by averaging all the S_f . T_b was from Moncur *et al.* (1989), who set a T_b of 3.5 °C for bud break and 7.1 °C for the rest of the phenological phases. The t_0 was set for January 1st. The F^* values obtained from the SW calibration process were the used in the DMA approach.

5. Statistical analysis of model performance

We explored the performance of the DMA by computing the root mean square deviation (RMSD). The RMSD (Equation 6) represents the mean deviation of the predicted values (P) to the observed ones (O) (Kobayashi and Salam, 2000).

$$(6) RMSD = \sqrt{\frac{1}{n} \sum_{i=1}^n (P_i - O_i)^2}$$

6. Testing the model compatibility

We computed the phenology using both the SW model (\bar{T}_a) and the DMA (\bar{T}_m). In both models, we applied the F^* values derived from the SW calibration (Section 4). Temperature values were obtained from the selected weather stations at each location. The \bar{T}_m were calculated by averaging \bar{T}_a for the corresponding month. A regression analysis was performed comparing phenology forecasts from the SW model and from the DMA. In the regression analysis, we tested for slope = 1 and intercept = 0. If the null hypothesis for the slope is rejected, the DMA will have no consistency with the SW model. If the null hypothesis for the intercept



FIGURE 1. Location of the study sites.

TABLE 1. Location, cultivars, years of phenological records, and period of historical weather records used in the analysis.

Country	Location	Geographical coordinates	Cultivar	Period of phenological records	Period of historical weather records
Spain	Raïmat	41.65 N 0.51 E	Tempranillo, Chardonnay	2017–2020	1997–2017
Spain	La Orden	38.51 N 6.41 W	Tempranillo	2005–2017	1998–2005
Portugal	Vilariça	41.24 N 7.11 W	Touriga Nacional	2017–2020	1985–2017
Italy	Mirabella Eclano	41.06 N 14.98 E	Aglianico	2017–2020	1978–2017

is rejected, then the DMA is biased. Finally, if both null hypotheses are not rejected, the bias observed is due to the unexplained variance (Piñeiro *et al.*, 2008). The significance level for the test was 0.05. Moreover, we evaluated DMA's performance using the Willmot index of agreement (d) and Theil's partial inequality coefficients (U_{bias} , U_{slope} , and U_{error}) (Piñeiro *et al.*, 2008; Willmott, 1984). The d evaluates the model's performance based on a ranking that varies from 0 (no agreement) to 1 (perfect fit), using both predicted (P) and observed (O) values (Equation 7). For the purpose of the performance test, P values corresponded to the phenology forecasts from the DMA and O values from the SW model.

$$(7) d = 1 - \frac{\sum_{i=1}^n (P_i - O_i)^2}{\sum_{i=1}^n (|P_i - \bar{O}| + |O_i - \bar{P}|)^2}$$

Theil's partial inequality coefficients separate the total prediction error into three different proportions to assess the performance of the regression. These proportions are: the bias of the prediction (U_{bias}); the slope of the fitted model against the identity line (U_{slope}), and the unexplained variance (U_{error}) (Paruelo *et al.*, 1998).

$$(8) U_{bias} = \frac{n(\bar{obs} - \bar{pre})^2}{\sum_{i=1}^n (obs_i - pre_i)^2}$$

$$(9) U_{slope} = \frac{(\beta - 1)^2 \sum_{i=1}^n (pre_i - \bar{pre})^2}{\sum_{i=1}^n (obs_i - est_i)^2}$$

$$(10) U_{bias} = \frac{\sum_{i=1}^n (est_i - obs_i)^2}{\sum_{i=1}^n (obs_i - pre_i)^2}$$

where n is the number of values, obs and pre are the observed and predicted values, \bar{obs} and \bar{pre} are the averages of the observed and predicted values, and est are the values estimated from the fitted regression model.

The compatibility of SW and the DMA was also tested by applying a two-sample t-test to the residuals of each calibrated model (Kalpić *et al.*, 2011). These residuals were obtained from comparisons between the observations and predictions (from SW or DMA) at the different sites. The analysis was also applied to the four cultivars. Considering that the number of phenological records was rather limited (see Table 1), testing was conducted on a cultivar-wise basis. Our objective was to demonstrate that the two approaches, SW and DMA, were compatible. With this aim, the null hypothesis (H_0) was that the mean difference of residuals between the two models would be 0 (or compatible with 0). Conversely, the alternative hypothesis (H_a) was that the DMA and SW would significantly differ from 0 and, consequently, would not be compatible.

7. Sensitivity analysis of the model

We performed an analysis to explore the effect of the number of years for the historical records on the calculation of eff_d (Figure 6). The analysis focused on the sites with the largest data set, Raïmat, Vilariça and Mirabela Eclano. At each site, we changed the number of years to compute eff_d , starting with three years and subsequently increasing the number of years by two. For each number of years, we forecast the period of phenological records (Table 1) 100 times. In each forecast, the combination of years for eff_d calculation was changed. For instance, in Raïmat, when the number of years for eff_d calculation was three, the phenology was predicted from [(1997, 2005, 2004); (1999, 2010, 2000); ...; (2002, 2011, 2014)].

RESULTS

1. Climatic characteristics of the sites studied

Figure 2 presents the frequent temperature distribution obtained from historical weather records (Table 1). They all show bi-modal behaviour, with a primary probability maximum at around 11 °C and a secondary maximum at around 21 °C. The amplitude of these maximums and the frequencies of the extreme values are site-dependent. La Orden was the least extreme of the four, with its highest probabilities corresponding to the central temperature range. Vilariça, on the other hand, had the warmest extremes and was the site where bi-modal behaviour was least prominent. Raïmat was the coldest of the four sites, with its highest probabilities being in the lower temperature range. Finally, Mirabella Eclano was similar to La Orden but slightly cooler. These very different characteristics made the sites interesting to explore the functionality of the proposed approach under different temperature accumulation regimes.

Figure 3 presents the average distribution throughout the year and the maximum and minimum values registered. As expected from Figure 2, Raïmat and Mirabella Eclano present the coolest climate and Vilariça the hottest. La Orden had the lowest variability in \bar{T}_a , presenting an average difference between the maximum and minimum \bar{T}_a of 7.4 °C. This difference contrasts with the 11.9 °C in Vilariça or the 12.5 °C in Mirabela Eclano. The mean \bar{T}_a is above T_b before bud break at all the sites, with Raïmat having the closest average to T_b before bud break.

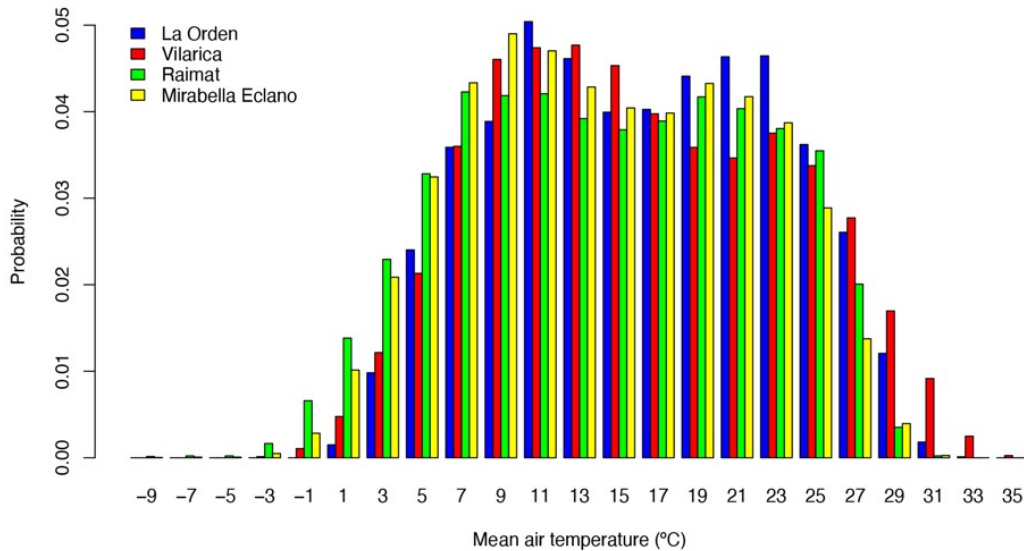


FIGURE 2. The probability distribution for the average daily temperature at the four experimental sites.

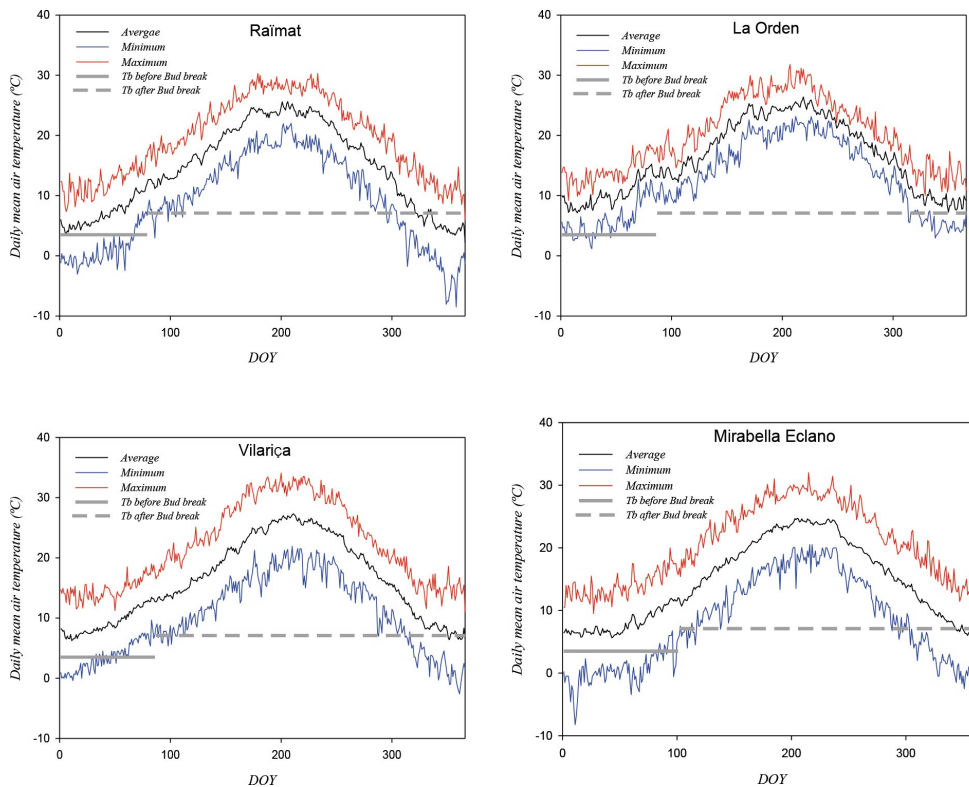


FIGURE 3. The daily evolution of average, minimum, and maximum mean air temperatures at the four study sites from the historical records is presented in Table 1. Horizontal lines indicate the base temperature (T_b) used before bud break (solid) and after bud break (dashed).

2. Calibration results

Table 2 reports the results of the calibration procedure performed at the different sites. ‘Chardonnay’ presented the lowest F^* values at bud break, whereas ‘Aglianico’ had the highest. We obtained different F^* values in the two sites for ‘Tempranillo’. La Orden had a higher F^* than Raimat in all the phenology phases except for veraison. When we summed

the F^* for all the phenology phases, the largest value was for Aglianico and the lowest for Chardonnay (Table 2).

3. Model performance at different locations

The DMA performed well for all the cultivars and locations (Figure 4). The RMSDs were between 4 and 6 days and depended on the cultivar and location (Figure 4). However, the model’s performance changed from year to year and for

TABLE 2. Forcing units (F^*) for the different phenological phases and grapevine cultivars. Values used for the base temperature (T_b) were 3.5 °C for the period from January 1st to bud break and 7.1 °C thereafter. Forcing units were obtained from daily air temperature records and used in the daily and monthly approaches.

Location	Cultivar	F^* (GDD, °C d)			
		Bud break	Bloom	Fruitset	Veraison
Raïmat	Tempranillo	345	425	525	1443
Raïmat	Chardonnay	274	436	530	1489
Vilarica	Touriga Nacional	499	428	525	1648
La Orden	Tempranillo	514	434	636	1430
Mirabella Eclano	Aglanico	534	478	718	1954

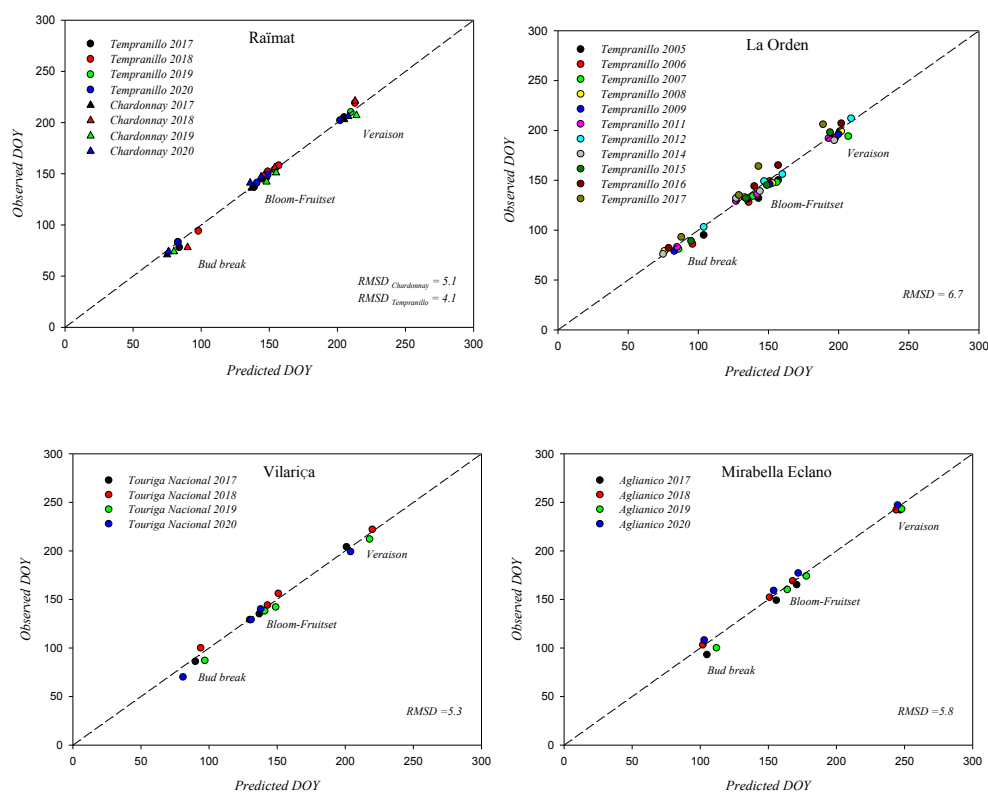


FIGURE 4. Observed vs Predicted bud break, bloom, fruit set, and veraison in Raïmat, La Orden, Vilarica, and Mirabella Eclano. Predicted DOY refers to values computed using the downscaling approach (DMA).

the different phenology events (Figure 4). For instance, in La Orden, the RMSDs ranged from 3.3 to 8.4 days. In 2017, in La Orden, we observed an unusual deviation of the prediction at fruitset and veraison (21 and 17 days difference from the observation). However, the same bias was observed when we used the SW model instead of the DMA.

4. Model comparison and compatibility analysis

Figure 5 presents a regression analysis comparing the SW model with the DMA. All the data are close to the identity line (dashed line in the figure), and no significant deviations or outliers were observed (Figure 5, statistic indexes).

The statistical regression analysis confirms the null hypothesis (p -Intercept and p -Slope > 0.05). The DMA predicts phenology with the same variance as the SW model. Most of the observed variance can be attributed to unexplained errors ($U_{error} = 0.78$). Furthermore, all the RMSD comparisons for the different phenological stages were very similar. Modelling phenology with the DMA provided slightly better results than the SW model, except for bud break (Table 3). When using the DMA, the highest RMSD was obtained at bud break, whereas with the SW model, the highest RMSD was at veraison. The lowest RMSDs were observed at bloom in both models.

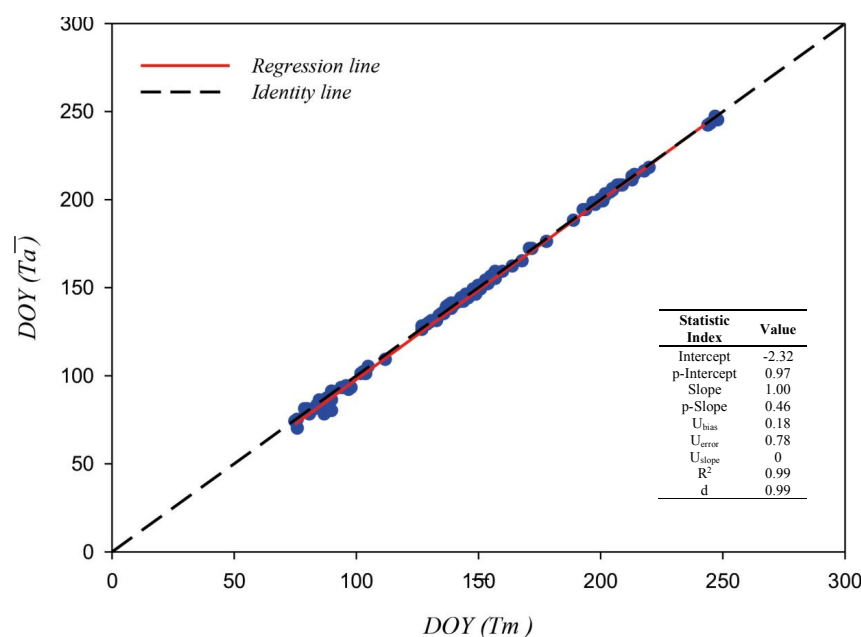


FIGURE 5. Comparison of the predicted phenology phases using the SW model or the DMA for all the sites and periods of phenological records (Table 2). The table presents the statistical indexes for the regression (red solid line): the slope and intercept, the Wilmott index (d) and the R2 value. The null hypothesis assumes that both models agree and there is no bias, if $p > 0.05$ for the intercept and the slope. The dashed line corresponds to the identity line. In both models (SW or DMA), we used the forcing units reported in Table 2.

TABLE 3. Root-mean-square deviation (RMSD) of predicted versus observed dates of key phenological stages for predictions based on the spring warming model (SW) or the downscaling monthly approach (DMA). The analysis includes all the cultivars and sites.

Phenological phase	RMSD (days)	
	SW	DMA
Bud break	5.4	6.7
Bloom	5.0	4.4
Fruit set	6.0	6.0
Veraison	6.4	5.9

The significance level established for testing the model's compatibility was 0.05 (5 %) (Fisher and Yates, 1938). Since the test is two-sided, as the difference can be either positive or negative, the p_{val} needed to reject the H_0 is 0.025. Thus, the next step was to compute the different parameters of the test, the standard error, degrees of freedom, mean residual value, the t-statistic, and the p_{val} corresponding to this statistic. Table 4 summarises these outcomes separately for each cultivar. Although the mean residuals were higher for the DMA, we could not reject the H_0 for any of the models because the p_{val} was always above the level of significance (0.025). Consequently, both models were compatible for all of the situations studied.

We conducted a sensitivity analysis to test the effect of varying the number of years of historical weather records on the models' performance. We decided to exclude La Orden from the analysis because the number of years was low.

However, we found no differences in RMSD when we compared the predictions with the observations (Figure 6). Changing the number of years of the historical records from 3 to more than 30 (Mirabella Eclano) produced a slight fluctuation in the RMSD but no apparent trend.

DISCUSSION

We present a novel approach to incorporate monthly mean air temperatures into phenology models, opening the way for more straightforward use of seasonal forecasts in the prediction of grapevine phenology and its implementation into DSSs. Several examples of the use of seasonal forecasts to schedule agronomic tasks can already be found in the literature. For instance, seasonal precipitation forecasts can be used to optimise the date at which maize is sown (Hansen and Indeje, 2004). The incorporation of temperature and precipitation

TABLE 4. Results of the t-test were carried out for the comparison of the distributions of the residuals obtained with the two models. The table shows the mean parameters for t-testing the compatibility of the model through mean residual comparison using the SW model and the DMA.

Site	Statistical test				
	Mean residual (days)		Standard error of the difference between the means of the two samples*	t-statistic	P _{val}
	SW	DMA			
Raïmat (Chardonnay)	0.50	3.06	1.99	-1.29	0.21
Raïmat (Tempranillo)	0.69	2.94	1.78	-1.26	0.22
Mirabella Eclano	1.00	2.93	2.13	-0.91	0.37
La Orden	0.77	1.36	1.41	-0.42	0.68
Vilariça	0.73	2.00	1.79	-0.71	0.49

*The standard error of the two samples was computed as $SE = \sqrt{\frac{\sigma_1^2}{n_1} + \frac{\sigma_2^2}{n_2}}$.

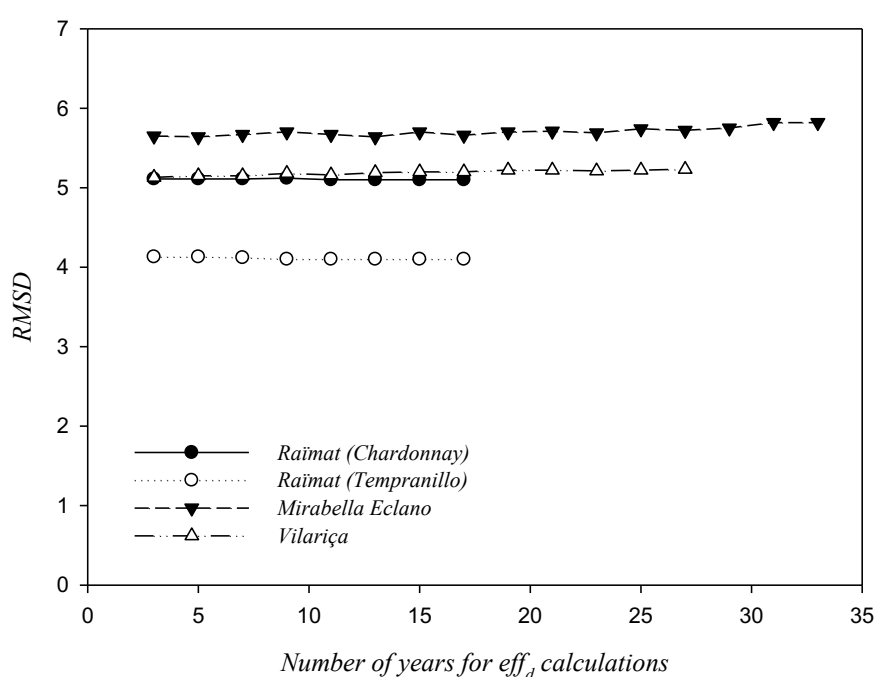


FIGURE 6. Effect of the number of years of historical weather on eff_d calculations. The lines represent the RMSDs after comparing observed and predicted phenology.

forecasts into pest and disease models can be used to tailor crop protection strategies (Régnière and Bolstad, 1994; Sporleder *et al.*, 2008). In the case of grapevines, seasonal weather forecasts have proven to be useful for estimating wine production in the Douro region (Santos *et al.*, 2020). However, the use of seasonal data to forecast grapevine phenology is still lacking (Santos *et al.*, 2020). One of the complexities in the use of seasonal predictions to forecast phenology is that it relies on conserving the monthly signal when introducing daily data into phenological models. We have presented a downscaling approach that will conserve the signal as well as any hypothetical bias correction that may need to be applied to monthly data.

The two phenological models, based on \bar{T}_a and \bar{T}_m , achieved similar results. Indeed, the residual comparison of the two approaches using real observations showed that

they could not be regarded as being incompatible at the 5 % confidence level (Table 4). This means that we can use both approaches to compute phenological stages and expect to obtain similar performances (similar RMSDs) for different grape varieties and across different phenological stages and sites (Table 3). The regression analysis confirms this result (Figure 5). The statistical indexes for slope and intercept and Theil's test confirmed that the bias observed in Figure 5 was a consequence of unexplained variance and not related to poor performance of the DMA (Piñeiro *et al.*, 2008). It is important to bear in mind that we used the same F^* and T_b in both approaches. The F^* was derived from inverse modelling of the SW model using \bar{T}_a . According to the results in Figure 5 and Table 4, it is possible to directly use the DMA from available F^* without any further calibration. The usability of the DMA might not be restricted to just DSSs, as it can be

a useful alternative when missing data are large enough to prevent any interpolation and gaps are distributed in a way that will not affect the monthly mean value.

The use of a statistical approach to perform a site-specific calibration requires a larger dataset than the ones available at the study sites (Chuine *et al.*, 2013). However, our main goal was not to test the accuracy of the DMA but to compare it with a well-established model for grapevine phenology forecasting. To overcome data limitations, we decided to use a T_b from the literature. The T_b selected was proposed by Moncur *et al.* (1989). To the best of our knowledge, this is the only work that has used an experimental approach to directly obtain T_b from the linear regression between temperature and phase duration for a wide range of grapevine varieties. The use of a proper T_b through a site-specific calibration would certainly improve DMA performance.

Equation 3 presents the general calculation approach. However, in only two cases was \overline{T}_m below T_b , Raïmat 2017 and 2019. We acknowledge that this is a limited number of cases, and there is a need to explore more situations in which \overline{T}_m is below T_b . Especially at sites with cooler climates than the ones used in the present study. Perhaps, at cooler sites with sudden temperature changes, the model will tend to underestimate S_f during the winter season. The magnitude of the bias in phenology forecasting associated with S_f underestimation will depend on the T_b selected (Parker *et al.*, 2011). However, our study sites provided a good representation of temperate dry-summer growing regions according to the Köppen-Geiger climate classification (Peel *et al.*, 2007). At other sites with similar climates, the model should perform as well as at the study sites.

The methodology proposed in the present paper is based on probability distribution functions for monthly temperatures obtained from meteorological records. Climate change can alter monthly temperature distributions, but we think that the rate of change will be slow enough not to compromise the DMA performance. The updated definition of ‘present-day’ climate provided by the World Meteorological Organization (WMO, 2017) is formally represented by the meteorological statistics of the period 1991-2020 (Hulme, 2020). In two of the four sites studied (Raïmat and La Orden), the historical weather records are within the ‘present-day’ definition (Table 2). Interestingly, the RMSDs remained in the same range in the other two sites (Mirabella Eclano and Vilariça). We found no significant trends in the monthly average temperature in the historical weather records presented in Table 2. Possibly, alteration in monthly temperature distribution occurs at a lower rate than the frequency of extremes. Figure 6 supports this hypothesis. We found no differences in model performance when varying the number of years used for eff_d calculations. However, we recommend keeping the historical weather records for eff_d calculations within the ‘present-day’ definition by the WMO to track climate change alterations of monthly mean temperatures.

CONCLUSIONS

We have presented a downscaling monthly approach (DMA) to replace T_a by \overline{T}_m with further modification in F^* . The DMA, tested at different study sites and varieties, was able to forecast various phenology phases with an adequate level of error. The DMA was also able to maintain the same bias as the reference spring warming model (SW). Therefore, one could use the DMA and expect the same prediction accuracy as the SW model. The next step will be to examine the utility of the present methodology when seasonal forecasts are used.

ACKNOWLEDGEMENTS

This work was supported by project RTA2015-00089-C02-02 of the Spanish Government’s Ministry of Economy and Competitiveness and by the European Union’s Horizon 2020 research and innovation programme [No 730253] and the project PCI2019-103621, financed by “Agencia Estatal de Investigación - Ministerio de Ciencia, Innovación y Universidades”, in the framework of the MAPPY project (JPI-Climate ERA-NET, AXIS call). The authors would like to thank the “Juan de la Cierva formación”, which is funded by the *Ministerio de Economía y Competitividad* [grant number FJCI-2017-34086] for funding Dr Omar Garcia-Tejera. The research conducted in this paper by Nube González-Reviriego and Raül Marcos-Mamoros received funding from the EU H2020 [grant agreements 730253 and 776467]

The authors would also like to thank all the staff of Mastroberardino, Raïmat, and Symington for hosting the experiment at their respective wineries. Special mention goes to Prof. Piero Mastroberardino for hosting some of the trials and to Antonio Dente (Mastroberardino) and Xavi Bordes (Raïmat) for their important technical assistance. The authors are also very grateful to Dr Maurizio Teobaldelli for his excellent technical support.

REFERENCES

- Baggiolini, M. (1952). Les stades repères dans le développement annuel de la vigne et leur utilisation pratique. *Revue Romande d’Agriculture, de Viticulture et d’Arboriculture*, 8: 4-6.
- Ceglar, A., & Toreti, A. (2021). Seasonal climate forecast can inform the European agricultural sector well in advance of harvesting. *npj Climate and Atmospheric Science*, 4(1): 42. <https://doi.org/10.1038/s41612-021-00198-3>
- Costa, R., Fraga, H., Fonseca, A., García de Cortázar-Atauri, I., Val, M.C., Carlos, C., Reis, S., & Santos, J. A. (2019). Grapevine Phenology of cv. Touriga Franca and Touriga Nacional in the Douro Wine Region: Modelling and Climate Change Projections. *Agronomy*, 9(4): 210. <https://doi.org/10.3390/agronomy9040210>
- Chuine, I., de Cortázar-Atauri, I.G., Kramer, K. & Hänninen, H. (2013). Plant Development Models. In: M.D. Schwartz (Editor), *Phenology: An Integrative Environmental Science*. Springer Netherlands, Dordrecht, pp. 275-293. https://doi.org/10.1007/978-94-007-6925-0_15

- Doblas-Reyes, F., Hagedorn, R. and Palmer, T. (2006). Developments in dynamical seasonal forecasting relevant to agricultural management. *Climate Research*, 33(1): 19-26. <https://doi.org/10.3354/cr033019>
- Doblas-Reyes, F.J., García-Serrano, J., Lienert, F., Biescas, A.P. and Rodrigues, L.R.L. (2013). Seasonal climate predictability and forecasting: status and prospects. *WIREs Climate Change*, 4(4): 245-268. <https://doi.org/10.1002/wcc.217>
- Fisher, R.A. and Yates, F. (1938). Statistical tables for biological, agricultural and medical research. Statistical tables for biological, agricultural and medical research. Oliver & Boyd, Oxford, England, 90-90 pp.
- Hansen, J.W., & Indeje, M. (2004). Linking dynamic seasonal climate forecasts with crop simulation for maize yield prediction in semi-arid Kenya. *Agricultural and Forest Meteorology*, 125(1): 143-157. <https://doi.org/10.1016/j.agrformet.2004.02.006>
- Hansen, J.W., Mason, S.J., Sun, L., & Tall, A. (2011). Review of seasonal climate forecasting for agriculture in sub-saharan africa. *Experimental Agriculture*, 47(2): 205-240. <https://doi.org/10.1017/S0014479710000876>
- Hulme, M. (2020). Climates Multiple: Three Baselines, Two Tolerances, One Normal. Academia Letters. <https://doi.org/10.20935/AL102>
- Hunter, A.F., & Lechowicz, M.J. (1992). Predicting the Timing of Budburst in Temperate Trees. *The Journal of Applied Ecology*, 29(3): 597. <https://doi.org/10.2307/2404467>
- IPCC (2014). Climate change 2014: Synthesis Report Contribution of Working Groups I, II and III to the Fifth Assessment Report of the Intergovernmental Panel on Climate Change, Geneva, Switzerland.
- IPCC (2018). Summary for Policymakers. In: Global Warming of 1.5°C. An IPCC Special Report on the impacts of global warming of 1.5°C above pre-industrial levels and related global greenhouse gas emission pathways, in the context of strengthening the global response to the threat of climate change, sustainable development, and efforts to eradicate poverty, World Meteorological Organization, Geneva, Switzerland.
- Jones, G.V., & Davis, R.E. (2000). Climate Influences on Grapevine Phenology, Grape Composition, and Wine Production and Quality for Bordeaux, France. *American Journal of Enology and Viticulture*, 51(3): 249-261.
- Jones, G.V., White, M.A., Cooper, O.R., & Storchmann, K. (2005). Climate Change and Global Wine Quality. *Climatic Change*, 73(3): 319-343. <https://doi.org/10.1007/s10584-005-4704-2>
- Kalpić, D., Hlupić, N., & Lovrić, M. (2011). Student's t-Tests. In: M. Lovrić (Editor), International Encyclopedia of Statistical Science. Springer Berlin Heidelberg, Berlin, Heidelberg, pp. 1559-1563. https://doi.org/10.1007/978-3-642-04898-2_641
- Kobayashi, K., & Salam, M.U. (2000). Comparing Simulated and Measured Values Using Mean Squared Deviation and its Components. *Agronomy Journal*, 92(2): 345-352. <https://doi.org/10.2134/agronj2000.922345x>
- Moncur, M.W., Rattigan, K., Mackenzie, D.H., & Mc Intyre, G.N. (1989). Base Temperatures for Budbreak and Leaf Appearance of Grapevines. *American Journal of Enology and Viticulture*, 40(1): 21-26.
- Parker, A., García de Cortázar-Atauri, I., Chuine, I., Barbeau, G., ... (2013). Classification of varieties for their timing of flowering and veraison using a modelling approach: A case study for the grapevine species *Vitis vinifera* L. *Agricultural and Forest Meteorology*, 180: 249-264. <https://doi.org/10.1016/j.agrformet.2013.06.005>
- Parker, A.K., De Cortazar-Atauri, I.G., Van Leeuwen, C., & Chuine, I. (2011). General phenological model to characterise the timing of flowering and veraison of *Vitis vinifera* L. *Australian Journal of Grape and Wine Research*, 17(2): 206-216. <https://doi.org/10.1111/j.1755-0238.2011.00140.x>
- Paruelo, J.M., Jobbágy, E.G., Sala, O.E., Lauenroth, W.K., & Burke, I.C. (1998). Functional and structural convergence of temperate grassland and shrubland ecosystems. *Ecological Applications*, 8(1): 194-206. [https://doi.org/10.1890/1051-0761\(1998\)008\[0194:FASCOT\]2.0.CO;2](https://doi.org/10.1890/1051-0761(1998)008[0194:FASCOT]2.0.CO;2)
- Peel, M.C., Finlayson, B.L., & McMahon, T.A. (2007). Updated world map of the Köppen-Geiger climate classification. *Hydrology and Earth System Sciences*, 11(5): 1633-1644. <https://doi.org/10.5194/hess-11-1633-2007>
- Piñeiro, G., Perelman, S., Guerschman, J.P., & Paruelo, J.M. (2008). How to evaluate models: Observed vs. predicted or predicted vs. observed? *Ecological Modelling*, 216(3): 316-322. <https://doi.org/10.1016/j.ecolmodel.2008.05.006>
- Régnière, J., & Bolstad, P. (1994). Statistical Simulation of Daily Air Temperature Patterns Eastern North America to Forecast Seasonal Events in Insect Pest Management. *Environmental Entomology*, 23(6): 1368-1380. <https://doi.org/10.1093/ee/23.6.1368>
- Ritchie, J.T., & Nesmith, D.S. (1991). Temperature and Crop Development. In: J. Hanks and J.T. Ritchie (Editors), Modeling Plant and Soil Systems. Agronomy Monograph. American Society of Agronomy, Crop Science Society of America, Soil Science Society of America, Madison, WI, pp. 5-29. <https://doi.org/10.2134/agronmonogr31.c2>
- Sadras, V.O., Reynolds, M.P., De La Vega, A.J., Petrie, P.R., & Robinson, R. (2009). Phenotypic plasticity of yield and phenology in wheat, sunflower and grapevine. 110(3): 242-250. <https://doi.org/10.1016/j.fcr.2008.09.004>
- Santos, J.A., Ceglar, A., Toreti, A., & Prodhomme, C. (2020). Performance of seasonal forecasts of Douro and Port wine production. *Agricultural and Forest Meteorology*, 291. <https://doi.org/10.1016/j.agrformet.2020.108095>
- Sporleder, M., Simon, R., Juarez, H., & Kroschel, J. (2008). Regional and seasonal forecasting of the potato tuber moth using a temperature-driven phenology model linked with geographic information systems. Integrated Pest Management for the Potato Tuber Moth *Phthorimaea operculella* Zeller—A Potato Pest of Global Importance. Weikersheim, Germany, Margraf Publishers: 15-30.
- Wang, J.Y. (1960). A Critique of the Heat Unit Approach to Plant Response Studies. *Ecology*, 41(4): 785-790. <https://doi.org/10.2307/1931815>
- Weisheimer, A., & Palmer, T.N. (2014). On the reliability of seasonal climate forecasts. *Journal of The Royal Society Interface*, 11(96): 20131162. <https://doi.org/10.1098/rsif.2013.1162>
- Willmott, C.J. (1984). On the Evaluation of Model Performance in Physical Geography. In: G.L. Gaile and C.J. Willmott (Editors), Spatial Statistics and Models. Springer Netherlands, Dordrecht, pp. 443-460. https://doi.org/10.1007/978-94-017-3048-8_23
- WMO (2017). Guidelines on the Calculation of Climate Normals (WMO-1203). World Meteorological Organization Geneva.
- Zapata, D., Salazar-Gutierrez, M., Chaves, B., Keller, M., & Hoogenboom, G. (2017). Predicting Key Phenological Stages for 17 Grapevine Cultivars (*Vitis vinifera* L.). *American Journal of Enology and Viticulture*, 68(1): 60-72. <https://doi.org/10.5344/ajev.2016.15077>