



## Feeding with Badly Preserved Silages and Occurrence of Subclinical Ketosis in Dairy Cows

F. Vicente

*Servicio Regional de Investigacion y Desarrollo Agroalimentario, Spain*

B. de la Roza

*Servicio Regional de Investigacion y Desarrollo Agroalimentario, Spain*

A. Argamentería

*Servicio Regional de Investigacion y Desarrollo Agroalimentario, Spain*

M. L. Rodríguez

*Sociedad Asturiana de Servicios Agropecuarios, Spain*

M. Peláez

*Sociedad Asturiana de Servicios Agropecuarios, Spain*

Follow this and additional works at: <https://uknowledge.uky.edu/igc>



Part of the [Agricultural Science Commons](#), [Agronomy and Crop Sciences Commons](#), [Plant Biology Commons](#), [Plant Pathology Commons](#), [Soil Science Commons](#), and the [Weed Science Commons](#)

This document is available at <https://uknowledge.uky.edu/igc/20/satellitesymposium2/34>

The XX International Grassland Congress took place in Ireland and the UK in June-July 2005.

The main congress took place in Dublin from 26 June to 1 July and was followed by post congress satellite workshops in Aberystwyth, Belfast, Cork, Glasgow and Oxford. The meeting was hosted by the Irish Grassland Association and the British Grassland Society.

Proceedings Editor: D. A. McGilloway

Publisher: Wageningen Academic Publishers, The Netherlands

© Wageningen Academic Publishers, The Netherlands, 2005

The copyright holder has granted the permission for posting the proceedings here.

## Feeding with badly preserved silages and occurrence of subclinical ketosis in dairy cows

F. Vicente<sup>1</sup>, B. de la Roza<sup>1</sup>, A. Argamentería<sup>1</sup>, M.L. Rodríguez<sup>2</sup> and M. Peláez<sup>2</sup>

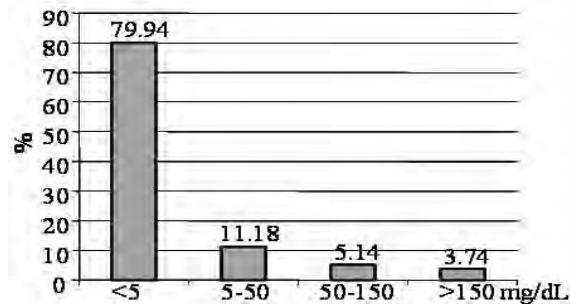
<sup>1</sup>Servicio Regional de Investigación y Desarrollo Agroalimentario (SERIDA). PO Box 13; 33300 Villaviciosa (Asturias), Spain, Email: fvicente@serida.org, <sup>2</sup>Sociedad Asturiana de Servicios Agropecuarios, S.L. Polígono Bravo-Sierra de Granda s/n; 33199 Granda Siero (Asturias), Spain.

**Keywords:** ketosis, dairy cows, silage fermentation

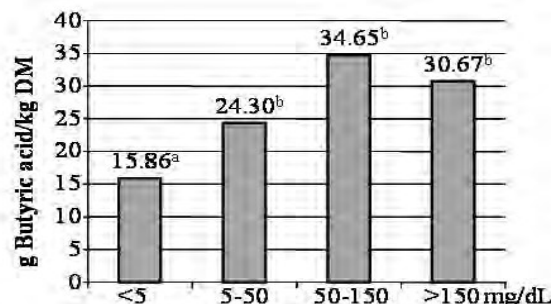
**Introduction** Ketosis in dairy cows is due to high levels of circulating ketone bodies in blood (Duffiel, 2000). In early lactation, the capacity of voluntary dry matter intake does not allow dairy cows to cover the total energy requirements for maintenance and production, and then the body reserves are mobilised. However, the amounts of fatty acids that can be metabolised in the liver are limited, later they are converted to ketone bodies (Tveit *et al.*, 1992). During forage ensiling, acetic and lactic fermentations only are desirable, but frequently butyric and alcoholic fermentations appear. When the animals ingest these silages, the butyric acid is metabolised to ketone bodies (Chalupa, 1974). The ketosis problems could be due to both causes simultaneously. The objective of this paper was to establish the incidence of subclinical ketosis in dairy herds of Asturias (Spain) and its relationship with the nutritive and fermentative characteristics of silages used in the ration.

**Materials and methods** Twenty representative dairy herds were recorded over a 12-month period. Monthly, the feeding was recorded and samples of total ration and its components were taken. Simultaneously, the urine of all cows that were between the previous month of parturition and three months later was sampled to determine the incidence of subclinical ketosis. The proximate analyses of feed samples were determined by techniques proposed by Wende (AOAC, 1984) and Van Soest *et al.* (1991). The volatile fatty acid concentration was determined by HPLC. The urine ketone bodies level was determined immediately with quantitative test strips.

**Results** A total of 2831 urine samples were taken from 1112 dairy cows. Of the total, 79.94% did not show a detectable excretion of ketone bodies by urine, whereas 11.18% presented slight subclinical ketosis and 5.14% and 3.74% presented moderate and high levels of excretion (Figure 1). The metabolisable energy content of the diet in the four levels of ketone bodies excretion was similar ( $10.73 \pm 0.141$  MJ ME/kg DM). However, the concentration of butyric acid in the diet was significantly higher in the animals with subclinical ketosis ( $P < 0.001$ , Figure 2).



**Figure 1** Proportions of cases of subclinical ketosis according to content in ketone bodies in urine



**Figure 2** Butyric acid intake in each urine ketone bodies excretion

**Conclusions** The analysis of frequencies in which the positive cases appear indicates that the probability of subclinical ketosis in cows is higher when they are feeding a ration elaborated with silages with high butyric acid content. A low energy concentration of the ration ( $<10.5$  MJ ME/kg DM), does not imply a higher probability of ketosis incidence, because, in our study, the distribution of positive cases are not related with that. However, the incidence in our cases can be further reduced by the use of maize silage well preserved as an energy supplement.

**Acknowledgement** This work is supported by Spanish PROFIT project FIT-06000-2004-1

### References

- AOAC, (1984). "Official methods of analysis" Ed: Association of official agricultural chemist. 14th ed.
- Chalupa, W. (1974). In: D.C. Church (ed.) Fisiología digestiva y nutrición de los rumiantes. Vol. 3, Nutrición práctica. Acribia, Zaragoza, 320-351.
- Duffiel, T. (2000). In: T.H. Herdt (ed.) Metabolic disorders of ruminants. W.B. Saunders, Philadelphia, 231-253.
- Tveit, B., F. Lingaas, M. Svendsen & Ø.V. Sjaastad (1992). Etiology of acetonemia in Norwegian cattle. 1. Effect of ketogenic silage, season, energy level, and genetic factors. *Journal of Dairy Science*, 75, 2421-2432.
- Van Soest, P.J., J.B. Robertson, & B.A. Lewis (1991). Methods of dietary fibre, neutral detergent fibre, and nonstarch polysaccharides in relation to animal nutrition. *Journal of Dairy Science*, 74, 3583-3597.