

# Factors associated with the clinical outcome of patients with relapsed/refractory CD19<sup>+</sup> acute lymphoblastic leukemia treated with ARI-0001 CART19-cell therapy

Valentín Ortiz-Maldonado <sup>1,2</sup>, Susana Rives,<sup>3,4</sup> Marta Español-Rego,<sup>5</sup> Anna Alonso-Saladrígues,<sup>3</sup> Mercedes Montoro,<sup>1</sup> Laura Magnano,<sup>1,2</sup> Eva Giné,<sup>1,2,6</sup> Mariona Pascal,<sup>2,5</sup> Marina Díaz-Beyá,<sup>1,2</sup> Maria Castella,<sup>7</sup> Albert Català,<sup>3,4,8</sup> Anna Faura,<sup>3</sup> Luis Gerardo Rodríguez-Lobato,<sup>1,2</sup> Aina Oliver-Caldes <sup>1,2</sup>, Alexandra Martínez-Roca,<sup>1</sup> Montserrat Rovira,<sup>1,2</sup> E Azucena González-Navarro,<sup>5</sup> Juan Ramón Ortega,<sup>5</sup> Joan Cid,<sup>2,9</sup> Miquel Lozano,<sup>2,9,10</sup> Enric Garcia-Rey,<sup>7</sup> Sara Fernández,<sup>11</sup> Pedro Castro,<sup>2,10,11</sup> Iolanda Jordan,<sup>4,10,12</sup> Neus Villamor,<sup>2,6,13</sup> Marta Aymerich,<sup>2,13</sup> Montserrat Torredadell,<sup>4,8,14</sup> Àngela Deyà,<sup>15</sup> Carlos Fernández de Larrea,<sup>1,2,10</sup> Daniel Benitez-Ribas,<sup>2,5</sup> Esteve Trias,<sup>16</sup> Sara Varea,<sup>17</sup> Gonzalo Calvo,<sup>16,17</sup> Jordi Esteve,<sup>1,2,10,18</sup> Alvaro Urbano-Ispizua,<sup>2,10,18</sup> Manel Juan <sup>2,5,10,19</sup>, Julio Delgado <sup>1,2,6,10</sup>

**To cite:** Ortiz-Maldonado V, Rives S, Español-Rego M, *et al.* Factors associated with the clinical outcome of patients with relapsed/refractory CD19<sup>+</sup> acute lymphoblastic leukemia treated with ARI-0001 CART19-cell therapy. *Journal for ImmunoTherapy of Cancer* 2021;9:e003644. doi:10.1136/jitc-2021-003644

► Additional supplemental material is published online only. To view, please visit the journal online (<http://dx.doi.org/10.1136/jitc-2021-003644>).

Accepted 04 November 2021



© Author(s) (or their employer(s)) 2021. Re-use permitted under CC BY-NC. No commercial re-use. See rights and permissions. Published by BMJ.

For numbered affiliations see end of article.

## Correspondence to

Dr Julio Delgado;  
[jdelgado@clinic.cat](mailto:jdelgado@clinic.cat)

Dr Manel Juan;  
[mjuan@clinic.cat](mailto:mjuan@clinic.cat)

The prognosis of patients with relapsed/refractory (R/R) acute lymphoblastic leukemia (ALL) remains poor, particularly for those relapsing after allogeneic hematopoietic cell transplantation (alloHCT).<sup>1</sup> Novel agents such as inotuzumab ozogamicin or blinatumomab achieve increased response rates, but these are generally transient unless followed by alloHCT. Chimeric antigen receptors (CAR) targeting CD19 have shown promising results in R/R ALL, and one of these products (tisagenlecleucel) has been approved for the treatment of patients with R/R ALL up to 25 years of age.<sup>2</sup>

In 2013, we designed our own CAR19 construct, comprising a single chain variable fraction sequence from the A3B1 hybridoma and the 4-1BB/CD3z signaling domains (online supplemental figure 1). After scaling up both lentiviral and cell production,<sup>3,4</sup> the Spanish Medicines Agency (AEMPS) approved our product (ARI-0001 cells) and the CART19-BE-01 trial.<sup>5</sup> In October 2019, once the recruitment was completed, the AEMPS approved a compassionate use program (CUP) for patients fulfilling the same inclusion/exclusion criteria. The trial's preliminary results were published elsewhere.<sup>5</sup> Here, we present the long-term results of all consecutive patients with R/R ALL recruited into the CART19-BE-01 trial and the subsequent

CUP. Detailed information on ARI-0001 cell manufacturing, inclusion/exclusion criteria, primary and secondary endpoints and assessment criteria can be found elsewhere.<sup>5</sup>

Before ARI-0001 cell infusion, patients received fludarabine at 30 mg/m<sup>2</sup>/day plus cyclophosphamide at 300 mg/m<sup>2</sup>/day on days -6, -5, and -4 followed by ARI-0001 cells. The first 15 patients received a single intravenous infusion of 0.5–1×10<sup>6</sup> ARI-0001 cells/kg (adults) or 5×10<sup>6</sup> ARI-0001 cells/kg (children) on day 0. The following 38 patients (23 from the CART19-BE-01 trial and 15 from the CUP) received 1×10<sup>6</sup> ARI-0001 cells/kg regardless of age: the first fraction (10%) on day 0, followed by the second (30%) and third (60%) fraction. The second fraction was administered 24–48 hours after the first, and the third 24–48 hours after the second, only if the patient had no signs or symptoms of CRS (online supplemental figure 2). The reason for this amendment to the protocol were three cases of fatal toxicity (two patients, aged 11 and 19, who died of refractory CRS, and one patient, age 35, who died of pseudomembranous colitis as a complication of grade 4 CRS).<sup>5</sup> The entire patients' disposition is depicted in online supplemental figure 3.

Adverse events and response rates are presented with 95% exact Clopper-Pearson CIs. The possible association between CRS

(all grades and grade  $\geq 3$ ), tumor burden at screening ( $<5\%$  vs  $\geq 5\%$  blasts in the bone marrow (BM)) and type of administration (single dose vs fractionated) was assessed using Fisher's exact test. We also analyzed the impact on progression-free survival (PFS) and overall survival (OS) of the following variables: age ( $<25$  vs  $\geq 25$  years), type of administration, tumor burden and loss of B-cell aplasia (BCA), the latter as a time-dependent covariate. PFS/OS curves were plotted using the Kaplan-Meier method for time-fixed covariates and the Simon-Makuch method for BCA loss. Landmark analyses were performed to identify the most appropriate timepoint for BCA loss. Univariate Cox regression was used to evaluate the impact of these covariates on PFS/OS, and those with Benjamini-Hochberg adjusted  $p$  values lower than 0.1 were introduced into a multivariate Cox regression. Schönfeld residuals were used to check the proportional hazards assumption. The trial was registered at [clinicaltrials.gov](https://clinicaltrials.gov) (NCT03144583).

Fifty-three patients with R/R ALL received therapy with ARI-0001 cells: 38 in the context of the CART19-BE-01 trial and 15 as part of the CUP. The median age was 30 years (range, 3–68), while 24 (45%) patients were female. Baseline characteristics of the entire population are displayed in online supplemental table 1). The data cut-off date was March, 2021, when all infused patients had a minimum follow-up of 100 days or had experienced disease relapse or death before that date.

Patients received ARI-0001 cells a median of 55.5 days (range, 27–216) after inclusion, and the median vein-to-vein time (from apheresis to infusion) was 43 days (range, 21–190). The original target dose was infused to all except 3 (5.7%) patients who received  $0.1\text{--}0.4 \times 10^6$  ARI-0001 cells/kg due to CRS. CRS was reported in 56.6% (95% CI 42.3%–70.2%) of patients, being grade  $\geq 3$  in 11.3% (95% CI 4.3% to 23%) and requiring treatment with tocilizumab and steroids in 20.7% and 11.3% of patients, respectively. Patients with  $\geq 5\%$  lymphoblasts in the BM had a higher incidence of CRS (any grade: 82% vs 39%,  $p=0.0022$ ; grade  $\geq 3$ : 27% vs 0%,  $p=0.0036$ ) compared with those with  $<5\%$  lymphoblasts. Moreover, the incidence and severity of CRS was also associated with single dose versus fractionated administration of ARI-0001 cells (any grade: 87% vs 45%,  $p=0.0064$ ; grade  $\geq 3$ : 27% vs 5%,  $p=0.047$ ). Neurotoxicity was observed in 13.2% (95% CI 5.5% to 25.3%) of patients, with one self-limited grade  $\geq 3$  occurrence (1.9%). No new second malignancies have been reported apart from a previously notified case of myelodysplasia (1/53; 1.9%).<sup>5</sup>

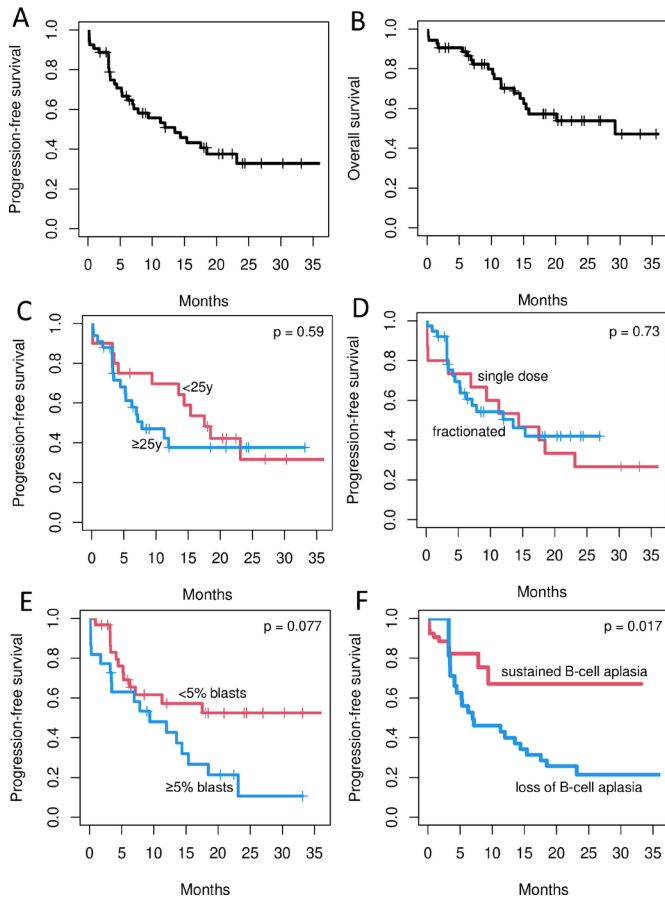
The safety profile of ARI-0001 cells was comparable to that of similar products, with grade  $\geq 3$  CRS/neurotoxicity rates lower than 5%.<sup>2,6</sup> Moreover, both fractionated administration and tumor burden were significantly associated with the incidence of CRS, in keeping with similar studies.<sup>7–10</sup> Of note, two patients enrolled in the CUP experienced grade  $\geq 3$  CRS with the first fraction ( $0.1 \times 10^6$  cells/kg), but successfully recovered after treatment with tocilizumab. Both patients had a high tumor burden

( $>90\%$  blasts in the BM) at study inclusion, and yet they could receive therapy while avoiding irreversible toxicity.

The measurable residual disease (MRD)-negative CR rate was 88.6% (95% CI 77.0% to 95.7%) at day +28 and 79.2% (95% CI 65.9% to 89.2%) at day +100. All three patients who received less than  $1 \times 10^6$  ARI-0001 cells/kg due to toxicity achieved an MRD-negative CR. All evaluable patients ( $n=50$ ) developed absolute BCA that lasted for a median of 4.2 months (95% CI 3.32 to 7.53 months). PFS was 50.9% (95% CI 38.4% to 67.4%) and 32.9% (95% CI 20.6% to 52.6%) at one and 2 years, respectively, while the 1-year and 2-year OS were 70.2% (95% CI 58.1% to 84.8%) and 53.9% (95% CI 40.5% to 71.8%). Progressive disease has occurred in 27 (50.9%; 95% CI 36.8 to 64.9%) patients at a median of 5.3 (range, 0.2–23.1) months. Tumor cells expressed CD19 in 24 (89%) of these relapses, while three (11%) were CD19-negative. ARI-0001 cells served as a bridge to alloHCT in three (6%) patients. Second ARI-0001 infusions were documented in nine patients (three more than previously reported<sup>5</sup>: four due to CD19 +relapse and five in patients with early BCA loss). These resulted in transient responses and brief periods of BCA, but one of these responses allowed the patient to receive a second alloHCT.

Subgroup analyses are depicted in figure 1 and online supplemental table 2. By univariate analysis, only two variables had a potential impact on PFS: tumor burden ( $<5\%$  vs  $\geq 5\%$  lymphoblasts in the BM at screening), with a 2-year PFS of 52.5% (95% CI 36.4% to 75.7%) vs 10.7% (95% CI 2.1% to 54.4%) and an HR of 2.14 (95% CI 1.04 to 4.42) for patients with 5% or more blasts (adjusted  $p=0.077$ ). On the other hand, loss of BCA had an HR of 4.41 (95% CI 1.59 to 12.2), adjusted  $p=0.0172$ . Both variables (tumor burden and loss of BCA) were also confirmed in the multivariate model, with an HR of 2.05 (95% CI 1.004 to 4.17) for patients with 5% or more blasts at screening ( $p=0.0484$ ) and an HR of 4.32 (95% CI 1.57 to 11.86) for patients with loss of BCA ( $p=0.0045$ ). Regarding OS, none of the covariates evaluated had sufficient impact to justify a multivariate analysis. Seeing that BCA loss had such an impact on PFS, we performed a series of landmark analyses to identify the most appropriate cut-off for clinical practice. We chose 3 and 6 months as potential landmark times because the median time to BCA loss was 4.2 months in our series. According to these analyses, the 3-month time point was the closest to statistical significance (HR 1.83; 95% CI 0.82 to 4.11;  $p=0.15$ , (online supplemental table 3).

With more patients and longer follow-up, we identified two covariates of potential predictive value: tumor burden in the BM and loss of BCA. This contrasts with our previous report, where this potential effect was not fully evident.<sup>5</sup> The adverse impact of tumor burden has been documented for other therapies, including alloHCT and CART19-cells,<sup>8,10</sup> and is therefore not surprising. The importance of BCA loss is, on the other hand, more controversial. Our strategy was associated with a relatively short in vivo ARI-0001 cell survival (median 4.2 months)



**Figure 1** Progression-free (PFS) and overall survival (OS) of patients with relapsed/refractory acute lymphoblastic leukemia treated with ARI-0001 cells. A, B show the PFS (A) and OS (B) of the entire population. C–F depict the PFS of patients according to age (C) (red curve: <25 years; blue curve: ≥25 years); type of administration (D) (red curve: single dose; blue curve: fractionated); percentage of blasts in the bone marrow (E) (red curve: <5%; blue curve: ≥5%); and loss of B-cell aplasia (F) (red curve: no; blue curve: yes). P values refer to the Benjamini-Hochberg-adjusted univariate analysis.

and most relapses had a CD19-positive phenotype, all in keeping with other studies.<sup>8–10</sup> Consequently, further immune manipulation may be justified in patients with a short-lived BCA, perhaps less than 3 months, although this potential timepoint needs further validation.

In conclusion, both tumor burden and BCA loss appeared to have a significant impact on PFS and could guide clinicians in the management of patients after cell infusion. The validity of the fractionated cell administration was also confirmed and will be explored in a phase 2 trial. The results of the CART19-BE-01 trial led to the approval by the AEMPS of ARI-0001 cells for the treatment of patients with R/R ALL older than 25 years of age (Hospital Exemption). To the best of our knowledge, this is the first purely academic CART19-cell product approved in any European country for any indication. This also makes Spain the only country in Europe where patients with R/R ALL have at least one approved CART19-cell

product regardless of age (tisagenlecleucel for younger patients; ARI-0001 cells for older patients).

#### Author affiliations

- <sup>1</sup>Department of Hematology, Hospital Clínic de Barcelona, Barcelona, Spain
- <sup>2</sup>Institut d'Investigacions Biomèdiques August Pi i Sunyer, Barcelona, Spain
- <sup>3</sup>Department of Pediatric Hematology and Oncology, Hospital Sant Joan de Déu, Barcelona, Spain
- <sup>4</sup>Institut de Recerca Pediàtrica Sant Joan de Déu, Barcelona, Spain
- <sup>5</sup>Department of Immunology, Hospital Clínic de Barcelona, Barcelona, Spain
- <sup>6</sup>Centro de Investigación Biomédica en Red de Cáncer, Madrid, Spain
- <sup>7</sup>Banc de Sang i Teixits, Barcelona, Spain
- <sup>8</sup>Centro de Investigación Biomédica en Red de Enfermedades Raras, Madrid, Spain
- <sup>9</sup>Apheresis & Cell Therapy Unit, Hospital Clínic de Barcelona, Barcelona, Spain
- <sup>10</sup>Department of Medicine, University of Barcelona, Barcelona, Spain
- <sup>11</sup>Medical Intensive Care Unit, Hospital Clínic de Barcelona, Barcelona, Spain
- <sup>12</sup>Pediatric Intensive Care Unit, Hospital Sant Joan de Déu, Barcelona, Spain
- <sup>13</sup>Hematopathology Unit, Hospital Clínic de Barcelona, Barcelona, Spain
- <sup>14</sup>Laboratory of Hematology, Hospital Sant Joan de Déu, Barcelona, Spain
- <sup>15</sup>Clinical Immunology and Primary Immunodeficiencies Unit, Hospital Sant Joan de Déu, Barcelona, Spain
- <sup>16</sup>Advanced Therapies Unit, Hospital Clínic de Barcelona, Barcelona, Spain
- <sup>17</sup>Department of Clinical Pharmacology, Hospital Clínic de Barcelona, Barcelona, Spain
- <sup>18</sup>Josep Carreras Leukemia Research Institute, Barcelona, Spain
- <sup>19</sup>Clinical Immunology Platform, Hospital Clínic-Sant Joan de Déu, Barcelona, Spain

**Twitter** Aina Oliver-Caldes @ainitaoliver

**Acknowledgements** We are very grateful to Prof. Josep Maria Ribera (Hospital Germans Trias i Pujol, Badalona), who critically read our manuscript. We thank the patients who participated in the study and their families, friends, caregivers and referring physicians. We are very grateful to Drs. Miguel Ángel Perales (Memorial Sloan Kettering Cancer Center, New York), Shannon Maude (Children's Hospital of Philadelphia), Juan José Lasarte (Centro de Investigación Médica Aplicada, Navarra) and Michael Schmitt (Universitäts Klinikum Heidelberg), members of the CART19-BE-01 trial DSMB. We are also indebted to the study staff and health care providers at Hospitals Clínic and Sant Joan de Déu, specifically to Anna Boronat, Raquel Martín-Ibáñez, Unai Perpiñá, Josep M. Canals, Vanina Rodríguez and Guillermo Suñé, who participated in the initial development of the construct; Judit Pich, Gabriela Recalde, Leticia Pereira and Joan Albert Arnáiz, from the Clinical Trials Unit; Andrea Scalise, Joaquín Sáez-Peñataro, Ferran Torres and Sandra Castaño, from the Department of Pharmacology; and Josep Maria Campistol, Antoni Castells, Airea Mira, Manel del Castillo, Miquel Pons and Marc Roda as the main representatives from both hospitals.

**Contributors** VO-M, SR, MJ and JD designed the clinical trial and wrote the paper; JE, GC and AU-I provided significant contribution to the study planning and analysis; VO-M, JE, LM, EG, MD-B, MM, LGR-L, AO-C, AM-R, MR, PC, SF and JD looked after adult patients; SR, AA-S, AC, AF and IJ looked after pediatric patients; DB-R, EAG-N, ME-R, JRO, MP and MJ manufactured ARI-0001 cells and monitored B-cell aplasia; MC and MJ designed the CAR construct and produced the lentiviral vector; NV, MA and MT performed measurable residual disease tests; JC, EG-R and ML performed leukocytaphereses; JD performed the statistical analysis; ET, GC and SV coordinate the Advanced Therapies Unit at Hospital Clínic. All authors reviewed the study data, read and approved the manuscript.

**Funding** This study was funded by CatSalut, Projecte ARI and grants cofinanced by the Instituto de Salud Carlos III–Subdirección General de Evaluación y Fomento de la Investigación Sanitaria–and Fondo Europeo de Desarrollo Regional (FEDER) PIC14/122, P13/676, PIE13/33, P18/775. VO-M was a recipient of a research grant from FEHH and JD was a recipient of a research grant from the Generalitat de Catalunya (PERIS IPFE SLT006/17/301).

**Competing interests** VO-M: Consultant or advisory role (Kite Gilead, Celgene, Novartis), travel grants (Kite Gilead, Celgene, Novartis, Roche, Takeda, Janssen), honoraria (Kite Gilead). SR: Consultant or advisory role (Novartis, Jazz, Shire/Servier, Amgen, Celgene/Bristol-Myers, Kite Gilead), travel grants (Novartis, Jazz, Shire/Servier, Amgen, Celgene/Bristol-Myers, Kite Gilead), honoraria (Novartis, Jazz, Shire/Servier, Amgen, Celgene/Bristol-Myers, Kite Gilead). AA-S: Consultant or advisory role (Novartis), travel grants (Novartis), honoraria (Novartis). EG: Consultant or advisory role (Kite Gilead, Janssen, Genmab), research funding (Kite

Gilead, Janssen, Roche). MD-B: Consultant or advisory role (Celgene, Novartis, Jazz, Astellas). AC: Consultant or advisory role (Novartis, Celgene), travel grants (Novartis, Celgene), honoraria (Novartis, Celgene). AF: Consultant or advisory role (Novartis), travel grants (Novartis), honoraria (Novartis). LGR-L: Travel grants (Kite Gilead, Amgen, Janssen). ML: Honoraria (Grifols, Fresenius Kabi), research funding (Terumo BCT, Maco-Pharma). AM-R: Consultant or advisory role (Bristol Myers Squibb, Abbvie), travel grants (Kite Gilead, Roche, Takeda, Janssen, Abbvie), honoraria (Abbvie). EG-R: Honoraria (Novartis). PC: Consultant or advisory role (Kite Gilead, Celgene, Janssen), travel grants (Kite Gilead, MSD, Janssen). MT: Consultant or advisory role (Novartis). CFDL: Consultant or advisory role (Janssen, Celgene/Bristol-Myers, GSK), honoraria (Janssen, Celgene/Bristol-Myers, Amgen, GSK), research funding (Janssen, Celgene/Bristol-Myers, Amgen, Takeda). GC: Consultant or advisory role (Celgene, Novartis). JE: Consultant or advisory role (Abbvie, Novartis, Celgene, Astellas, Jazz, Daiichi Dankyo, Roche, Amgen, Pfizer), travel grants (Celgene, Roche, Astellas, Daiichi Dankyo), research funding (Novartis, Celgene). AU-I: Consultant or advisory role (Kite Gilead, Celgene/Bristol-Myers, Miltenyi), travel grants (Kite Gilead, Celgene/Bristol-Myers). MJ: Consultant or advisory role (Kite Gilead, Grifols), honoraria (Kite Gilead, Grifols).

**Patient consent for publication** Not applicable.

**Ethics approval** The CART19-BE-01 clinical trial and subsequent compassionate use program were approved by the Spanish Medicines Agency (AEMPS) and both Institutions' Review Boards and Ethics Committees. All participants provided written informed consent.

**Provenance and peer review** Not commissioned; externally peer reviewed.

**Data availability statement** Not applicable (this trial started recruitment in July 2017).

**Supplemental material** This content has been supplied by the author(s). It has not been vetted by BMJ Publishing Group Limited (BMJ) and may not have been peer-reviewed. Any opinions or recommendations discussed are solely those of the author(s) and are not endorsed by BMJ. BMJ disclaims all liability and responsibility arising from any reliance placed on the content. Where the content includes any translated material, BMJ does not warrant the accuracy and reliability of the translations (including but not limited to local regulations, clinical guidelines, terminology, drug names and drug dosages), and is not responsible for any error and/or omissions arising from translation and adaptation or otherwise.

**Open access** This is an open access article distributed in accordance with the Creative Commons Attribution Non Commercial (CC BY-NC 4.0) license, which permits others to distribute, remix, adapt, build upon this work non-commercially,

and license their derivative works on different terms, provided the original work is properly cited, appropriate credit is given, any changes made indicated, and the use is non-commercial. See <http://creativecommons.org/licenses/by-nc/4.0/>.

#### ORCID iDs

Valentín Ortiz-Maldonado <http://orcid.org/0000-0003-4699-6862>

Aina Oliver-Caldes <http://orcid.org/0000-0002-7921-5420>

Manel Juan <http://orcid.org/0000-0002-3064-1648>

Julio Delgado <http://orcid.org/0000-0002-5157-4376>

#### REFERENCES

- Gökbuğet N, Stanze D, Beck J, *et al*. Outcome of relapsed adult lymphoblastic leukemia depends on response to salvage chemotherapy, prognostic factors, and performance of stem cell transplantation. *Blood* 2012;120:2032–41.
- Maude SL, Laetsch TW, Buechner J, *et al*. Tisagenlecleucel in children and young adults with B-cell lymphoblastic leukemia. *N Engl J Med* 2018;378:439–48.
- Castella M, Boronat A, Martín-Ibáñez R, *et al*. Development of a novel anti-CD19 chimeric antigen receptor: a paradigm for an affordable CAR T cell production at academic institutions. *Mol Ther Methods Clin Dev* 2019;12:134–44.
- Castella M, Caballero-Baños M, Ortiz-Maldonado V, *et al*. Point-of-care CAR T-cell production (ARI-0001) using a closed semi-automatic bioreactor: experience from an academic phase I clinical trial. *Front Immunol* 2020;11:482.
- Ortiz-Maldonado V, Rives S, Castellà M, *et al*. CART19-BE-01: a multicenter trial of ari-0001 cell therapy in patients with CD19<sup>+</sup> relapsed/refractory malignancies. *Mol Ther* 2021;29:636–44.
- Sheth VS, Gauthier J. Taming the beast: CRS and ICANS after CAR T-cell therapy for ALL. *Bone Marrow Transplant* 2021;56:552–66.
- Maude SL, Frey N, Shaw PA, *et al*. Chimeric antigen receptor T cells for sustained remissions in leukemia. *N Engl J Med* 2014;371:1507–17.
- Park JH, Rivière I, Gonen M, *et al*. Long-term follow-up of CD19 CAR therapy in acute lymphoblastic leukemia. *N Engl J Med* 2018;378:449–59.
- Frey NV, Shaw PA, Hexner EO, *et al*. Optimizing chimeric antigen receptor T-cell therapy for adults with acute lymphoblastic leukemia. *J Clin Oncol* 2020;38:415–22.
- Hay KA, Gauthier J, Hirayama AV, *et al*. Factors associated with durable EFS in adult B-cell ALL patients achieving MRD-negative CR after CD19 CAR T-cell therapy. *Blood* 2019;133:1652–63.

## SUPPLEMENTARY APPENDIX

### Factors associated with the clinical outcome of patients with relapsed/refractory CD19<sup>+</sup> acute lymphoblastic leukemia treated with ARI-0001 CART19-cell therapy

Valentín Ortíz-Maldonado et al.

#### SUPPLEMENTARY TABLES

##### Supplementary Table 1: Baseline characteristics of patients with relapsed-refractory acute lymphoblastic leukemia who received ARI-0001 cell therapy

Characteristic	n = 53
Age in years, median (range)	30 (3-68)
Female sex, n (%)	24 (54)
Presence of Philadelphia chromosome, n (%)	6 (11)
Prior lines of therapy, median (range)	4 (2-8)
Prior IO, n (%)	28 (53)
Prior blinatumomab, n (%)	12 (23)
Prior alloHCT, n (%)	42 (79)
Measurable disease at screening, n (%)	42 (79)
Extramedullary disease, n (%)	19 (36)
≥ 5% blasts in the bone marrow, n (%)	22 (42)
CNS disease, n (%)	7 (13)
Follow-up in months from infusion, median (range)	19 (3-40)

Abbreviations: IO, inotuzumab ozogamicin; alloHCT, allogeneic hematopoietic cell transplantation; CNS, central nervous system.

**Supplementary Table 2: Subgroup analysis of efficacy of ARI-0001 cells in patients with acute lymphoblastic leukemia**

Population	n	Progression-free survival		Overall survival	
		Median (95% CI) 2-year rate (95% CI)	Univariate HR (95% CI), p value*	Median (95% CI) 2-year rate (95% CI)	Univariate HR (95% CI), p value*
Total	53	13.52 mo (7.14-NA) 32.9% (20.6-52.6%)		29.2 mo (15.0-NA) 53.9% (40.5-71.8%)	
Single dose	15	14.4 mo (6.94-NA) 26.7% (11.5-61.7%)		29.2 mo (11.5-NA) 53.3% (33.2-85.6%)	
Fractionated	38	13.5 mo (5.3-NA) 42.0% (27.5-64.2%)	0.88 (0.41-1.86), p = 0.73	NA (14.5-NA) 54.4% (38.4-77.1%)	0.91 (0.36-2.31), p = 0.84
< 25 years	20	17.53 mo (13.52-NA) 31.6% (14.5-68.9%)		29.2 mo (15.8-NA) 57.2% (38.4-85.1%)	
≥ 25 years	33	7.83 mo (5.23-NA) 37.6% (23-61.6%)	1.34 (0.64-2.81), p = 0.59	NA (11.5-NA) 53.4% (36.7-77.8%)	1.25 (0.52-3.01), p = 0.84
< 5% blasts in BM	31	NA (7.14-NA) 52.5% (36.4-75.7%)		NA (29.2-NA) 72% (56.2-92.2%)	
≥ 5% blasts in BM	22	9.38 mo (3.45-NA) 10.7% (2.1-54.4%)	2.14 (1.04-4.42), p = 0.077	15.4 mo (10.4-NA) 33.4% (17.6-63.5%)	2.55 (1.06-6.17), p = 0.134
Loss of BCA	53		4.41 (1.59-12.21), p = 0.0172		1.28 (0.44-3.68), p = 0.84

Abbreviations: BM, bone marrow; IO, inotuzumab ozogamicin; alloHCT, allogeneic hematopoietic cell transplantation; BCA, B-cell aplasia; CI, confidence interval; mo, months; NA, not available/not reached; HR, hazard ratio.

\*Adjusted according to Benjamini-Hochberg method

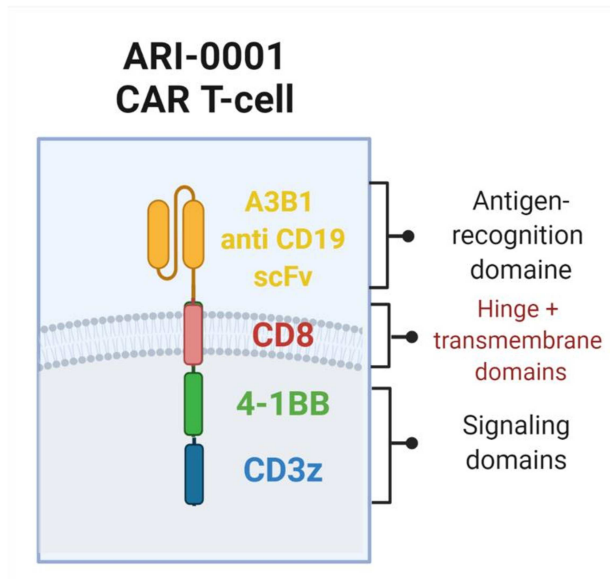
### Supplementary Table 3: Landmark analyses evaluating the impact of loss of B-cell aplasia at different time points

Population	n	Progression-free survival	
		Median (95% CI) 2-year rate (95% CI)	Univariate HR (95% CI), p value
Loss of BCA < 3 mo	15	11.4 (1.14-NE) 22.5% (8.4-60.3%)	1.83 (0.82-4.11), p = 0.15
Loss of BCA ≥ 3 mo	30	15.5 mo (6.38-NE) 49.3% (32.5-74.8%)	
Loss of BCA < 6 mo	17	17.1 (8.38-NE) 43.5% (23.0-82.2%)	1.39 (0.45-4.28), p = 0.56
Loss of BCA ≥ 6 mo	15	NE (7.52-NE) 55.3% (31.2-98.0%)	

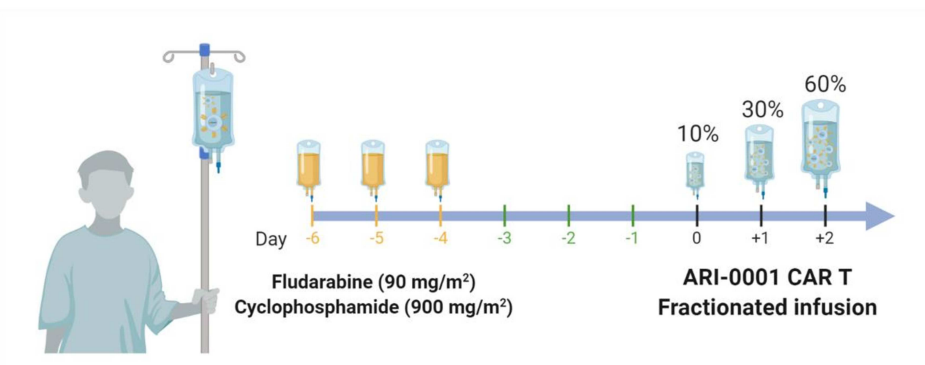
Abbreviations: BCA, B-cell aplasia; CI, confidence interval; NE, not estimable; HR, hazard ratio.

## SUPPLEMENTARY FIGURES

Supplementary Figure 1: Diagram of ARI-0001 chimeric antigen receptor construct

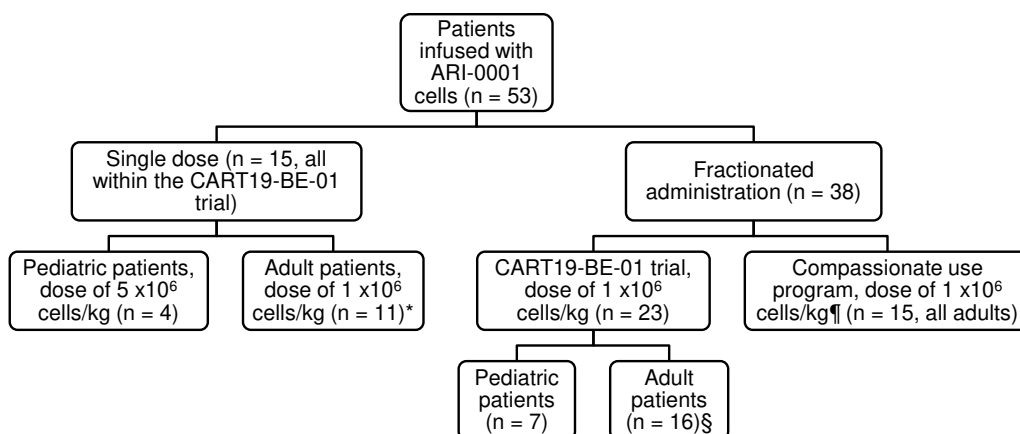


Supplementary Figure 2: Diagram of the lymphodepleting chemotherapy and ARI-0001 cells infusion used in the CART19-BE-01 clinical trial and subsequent compassionate use program





## Supplementary Figure 3: Patients' disposition



\*The first patient ever treated with ARI-0001 cells only received  $0.5 \times 10^6$  cells/kg as mandated by the Spanish Medicines Agency.

§One adult patient recruited into the CART19-BE-01 trial received  $0.4 \times 10^6$  cells/kg because of cytokine release syndrome after the second fraction.

¶Two adult patients recruited into the compassionate use program received  $0.1 \times 10^6$  cells/kg because of cytokine release syndrome after the first fraction.