



This is a repository copy of *Home dialysis: conclusions from a Kidney Disease: Improving Global Outcomes (KDIGO) controversies conference*.

White Rose Research Online URL for this paper:

<https://eprints.whiterose.ac.uk/196109/>

Version: Published Version

Article:

Perl, J., Brown, E.A., Chan, C.T. et al. (75 more authors) (2023) Home dialysis: conclusions from a Kidney Disease: Improving Global Outcomes (KDIGO) controversies conference. *Kidney International*. ISSN 0085-2538

<https://doi.org/10.1016/j.kint.2023.01.006>

Reuse

This article is distributed under the terms of the Creative Commons Attribution-NonCommercial-NoDerivs (CC BY-NC-ND) licence. This licence only allows you to download this work and share it with others as long as you credit the authors, but you can't change the article in any way or use it commercially. More information and the full terms of the licence here: <https://creativecommons.org/licenses/>

Takedown

If you consider content in White Rose Research Online to be in breach of UK law, please notify us by emailing eprints@whiterose.ac.uk including the URL of the record and the reason for the withdrawal request.



eprints@whiterose.ac.uk
<https://eprints.whiterose.ac.uk/>

Home dialysis: conclusions from a Kidney Disease: Improving Global Outcomes (KDIGO) Controversies Conference

Q25 Jeffrey Perl¹, Edwina A. Brown², Christopher T. Chan³, Cécile Couchoud⁴, Simon J. Davies⁵, Rumezka Kazancioglu⁶, Scott Klarenbach⁷, Adrian Liew⁸, Daniel E. Weiner⁹, Michael Cheung¹⁰, Michel Jadoul¹¹, Wolfgang C. Winkelmayer¹² and Martin Wilkie¹³; for Conference Participants¹⁴

Q3 ¹Division of Nephrology, St. Michael's Hospital and the Keenan Research Center in the Li Ka Shing Knowledge Institute, St. Michael's Hospital, University of Toronto, Toronto, Ontario, Canada; ²Imperial College Renal and Transplant Centre, Hammersmith Hospital, London, United Kingdom; ³University Health Network, University of Toronto, Toronto, Ontario, Canada; ⁴REIN Registry, Agence de La Biomedicine, Paris, France; ⁵School of Medicine, Keele University, Staffordshire, United Kingdom; ⁶Department of Nephrology, Bezmialem Vakif University, Faculty of Medicine, Istanbul, Turkey; ⁷Division of Nephrology, Department of Medicine, University of Alberta, Edmonton, Alberta, Canada; ⁸The Kidney & Transplant Practice, Mount Elizabeth Novena Hospital, Singapore, Singapore; ⁹William B. Schwartz Division of Nephrology, Tufts Medical Center, Boston, Massachusetts, USA; ¹⁰KDIGO, Brussels, Belgium; ¹¹Cliniques Universitaires Saint Luc, Université Catholique de Louvain, Brussels, Belgium; ¹²Selzman Institute for Kidney Health, Section of Nephrology, Department of Medicine, Baylor College of Medicine, Houston, Texas, USA; and ¹³Sheffield Kidney Institute, Sheffield Teaching Hospital NHS Foundation Trust, Sheffield, United Kingdom

Home dialysis modalities (home hemodialysis [HD] and peritoneal dialysis [PD]) are associated with greater patient autonomy and treatment satisfaction compared with in-center modalities, yet the level of home-dialysis use worldwide is low. Reasons for limited utilization are context-dependent, informed by local resources, dialysis costs, access to healthcare, health system policies, provider bias or preferences, cultural beliefs, individual lifestyle concerns, potential care-partner time, and financial burdens. In May 2021, KDIGO (Kidney Disease: Improving Global Outcomes) convened a controversies conference on home dialysis, focusing on how modality choice and distribution are determined and strategies to expand home-dialysis use. Participants recognized that expanding use of home dialysis within a given health system requires alignment of policy, fiscal resources, organizational structure, provider incentives, and accountability. Clinical outcomes across all dialysis modalities are largely similar, but for specific clinical measures, one modality may have advantages over another. Therefore, choice among available modalities is preference-sensitive, with consideration of quality of life, life goals, clinical characteristics, family or care-partner support, and living environment. Ideally, individuals, their care-partners, and their healthcare teams will employ shared decision-making in assessing initial and subsequent kidney failure treatment options. To meet this goal, iterative, high-quality education and support for healthcare professionals, patients, and

care-partners are priorities. Everyone who faces dialysis should have access to home therapy. Facilitating universal access to home dialysis and expanding utilization requires alignment of policy considerations and resources at the dialysis-center level, with clear leadership from informed and motivated clinical teams.

Kidney International (2023) ■, ■-■; <https://doi.org/10.1016/j.kint.2023.01.006>

KEYWORDS: dialysis modality; healthcare policy; hemodialysis; peritoneal dialysis; quality of life

Copyright © 2023, Published by Elsevier, Inc., on behalf of the International Society of Nephrology.

Home dialysis modalities, including home hemodialysis (HD) and peritoneal dialysis (PD), are associated with increased patient autonomy and treatment satisfaction and are sometimes less costly than in-center HD (ICHD).¹⁻⁷ Yet, despite mounting evidence regarding the benefits of home dialysis, its use worldwide remains low. The availability and use of home-based dialysis therapies remain variable, shaped by a complex interplay among national healthcare policies, systems for dialysis delivery, financial considerations, and culture. In many regions, including several high-income areas, individuals facing kidney failure have limited or no access to home HD. For PD, recent substantial growth in use among low- and middle-income regions has been accompanied by a concomitant decline in PD among many high-income regions.⁸

Globally, the net burden of untreated kidney disease is rising.⁹ The population of individuals receiving dialysis therapy is projected to double from 2010 to 2030.¹⁰ In response, increasing worldwide home dialysis utilization may be a means to improve universal access to kidney replacement therapy (KRT) in low- and middle-income

Correspondence: Michael Cheung, KDIGO, Avenue Louise 65, Suite 11, Brussels 1050, Belgium. E-mail: michael.cheung@kdigo.org

¹⁴Other Conference Participants are listed in the Appendix.

Received 29 July 2022; revised 9 December 2022; accepted 9 January 2023

regions by developing and implementing low-cost, self-managed dialysis.

In 2018, the first Kidney Disease: Improving Global Outcomes (KDIGO) dialysis controversies conference, entitled Dialysis Initiation, Modality Choice, Access, and Prescription, cemented the understanding that choice of dialysis modality plays a central role in a person-centered and goal-directed approach to KRT.¹¹ In 2019, the second KDIGO dialysis controversies conference addressed Blood Pressure and Volume Management in Dialysis, both of which are significantly and variably impacted by dialysis modality.¹² This third meeting of the KDIGO dialysis conference series focused on policy, facility, and patient factors affecting home dialysis utilization (Figure 1; Table 1), as well as considerations for expanding its use (Table 2).¹³

POLICY FACTORS AFFECTING MODALITY AVAILABILITY

Who pays for dialysis varies internationally and has significant implications for availability of care. Publicly funded treatment is free for patients in some regions, but in other regions, individuals must pay for some or all services.¹⁴ Some models are

hybrids in which modality access and coverage are influenced by whether the payer is public or private. For healthcare systems, providing access to dialysis and optimizing healthcare economics are often competing interests (Figure 2). The amount spent on healthcare is increasing annually for all Organisation for Economic Co-operation and Development nations.¹⁵ Dialysis care is expensive, and for many, it is associated with poor quality of life.^{16,17} For lower- and middle-income regions, costs of dialysis care are often too high to provide KRT to all patients with kidney failure.¹⁸ A rationale for PD-first policies in publicly funded systems is that the lowered costs maximize dialysis availability to the largest possible population¹⁹; however, a consequence of PD-first policies may be constraint of individual choice of therapy.²⁰

In addition to the considerable costs of dialysis therapy, its environmental impact is significant, and mitigation strategies should be prioritized.²¹ Action is required on waste reduction, as well as efficiency of energy and water use, which apply equally to home- and center-based dialysis. A clear advantage of home therapies is the lower level of need for transportation and the decreased associated carbon footprint; however, more-frequent dialysis in the home can offset this benefit.²¹

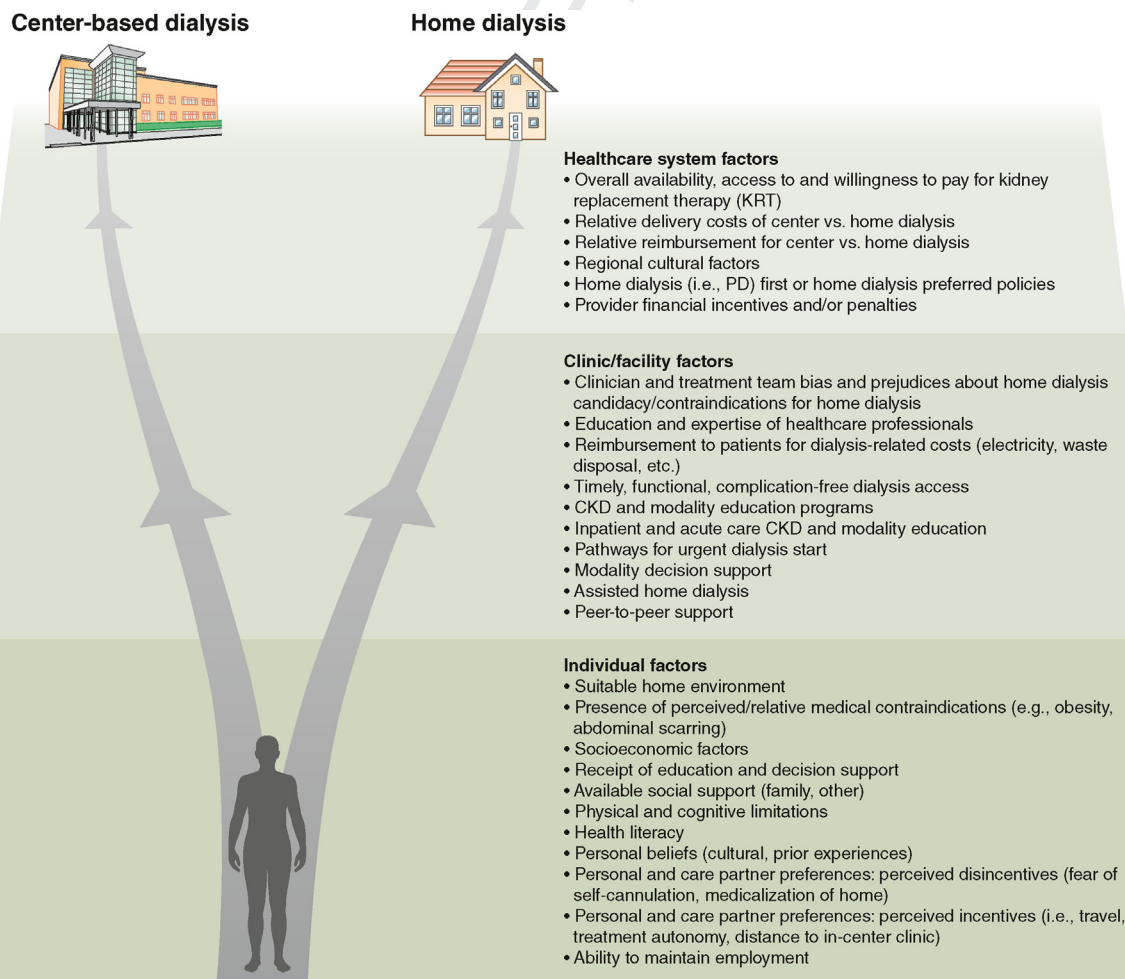


Figure 1 | Factors leading to either center-based or home-based dialysis. CKD, chronic kidney disease; PD, peritoneal dialysis.

Table 1 | Summary of consensus points and residual controversies**Consensus points**

- Economic and local policies have a strong role in dialysis modality distribution within a region.
- Clinical outcomes are comparable among existing dialysis modalities, although patient quality of life may be better with home dialysis across certain domains.
- All individuals in need of maintenance dialysis should have home dialysis as a potential treatment option.
- Individualized care, patient choice, education, and shared decision-making are central to modality selection in environments where multiple dialysis treatment options are available.
- The choice of dialysis modality should be directed by the anticipated benefits to quality of life as perceived by the patient and care-partners.
- High-quality education and clinical experience for healthcare professionals around home dialysis therapies are priorities.

Residual controversies and questions

- Is a stronger evidence base needed to support interventions purported to increase the use of home dialysis?
- Is it advisable or feasible to initiate further randomized clinical trials of dialysis modality comparisons given prior efforts and the importance of patient choice?
- How do we measure the success of home dialysis growth as use expands to individuals previously considered ineligible?
- In what contexts or circumstances could PD-first policies be considered and endorsed?
- How do we measure and cross-compare home dialysis utilization in the context of differential rates of transplantation and conservative nondialytic care?

PD, peritoneal dialysis.

Whether home dialysis can result in cost savings from the perspective of the payer is context-dependent. In general, PD costs are lower than ICHD costs, but this tends to be truer in high-income regions, largely due to staffing costs. In several countries, the cost of PD is greater than that of ICHD, often because of the high costs of consumables.²² Large-scale use of PD can lead to cost reductions, and local manufacturing of PD fluid reduces shipping and tariffs.

Modifying the frequency or amount of assistance with home dialysis also influences costs. Having trained personnel provide assistance to PD patients in their homes increases expense and may reduce realized cost savings relative to ICHD. For home HD, the first year of treatment has high costs associated with installation of equipment and initial patient training, but in subsequent years, costs become lower than those with ICHD.²² For patients who do not continue long enough on home HD to recoup training and set-up costs, savings may not be realized. High rates of transition, such as for kidney transplantation or a return to ICHD, may increase costs of home, relative to center-based, therapies.²³

Regardless of region, home dialysis often results in at least some cost burden being shifted to patients or their care-partners. To offset these costs, some countries, including Canada, Australia, the United Kingdom, and New Zealand, have local reimbursement policies to individuals for power, water, and waste disposal. Whether such reimbursements influence choice of modality is unclear.

Expansion of use of home dialysis within a given health-care system is complex and requires alignment of policy, fiscal resources, organizational structure, and provider incentives or accountability (Table 3). Financial and policy levers for influencing the use of home dialysis need to be contextualized to the population of interest, existing culture, healthcare infrastructure and resources, and health priorities and challenges. Policy makers, health economists, clinicians, patients, and their care-partners all have varying priorities that need to be balanced. The most appropriate financial model and

healthcare policy toward home dialysis should be determined by each jurisdiction, after considering the accessibility to dialysis, healthcare economics, sustainability, and local outcomes.

Historically, many successful PD initiatives have been operationalized at the payer and dialysis-provider level. Figure 3 documents countries in which high utilization of home dialysis can be attributed partly to such initiatives.^{24–29} In many regions, ICHD is the default and therefore predominant modality, and financial pressures to keep all stations in HD centers full may be present. In reimbursement models, the 4 key stakeholders are the payer, the dialysis provider, the nephrologist, and the patient (Figure 4). Actions by the payer and provider are likely to have the greatest impact. Payer interventions can take several forms, such as direct fiscal incentives or penalties, coverage for a particular modality type(s), capacity limits, or a combination of these. Incentives to providers should reach the team of professionals supporting home dialysis, including nurses, surgeons, and radiologists.³⁰ However, financial incentives alone are unlikely to increase use of home dialysis, as they are only one piece in a complex system.^{31,32}

EVALUATING AND COMPARING MODALITY OUTCOMES

Comparisons of clinical outcomes between home and ICHD are largely limited to observational studies, and the results can be challenging to interpret in the context of selection bias and confounding. Very few studies include robust measures of residual kidney function, frailty, or social determinants of health, limiting analysis of key subgroups. Most studies are from higher-income regions, limiting their global applicability.

Clinical outcomes

Peritoneal dialysis versus hemodialysis. Although the evidence has major limitations, it suggests that age,^{33–38} gender,^{37,39,40} race,^{37,41,42} region, diabetes status, vascular

Table 2 | Research priorities for home dialysis outcomes and implementation**Standardized reporting and outcomes**

- Define and identify core outcomes of critical importance and relevance to all home dialysis stakeholders.
- Use metrics to evaluate, report, and benchmark performance of dialysis modalities.
- Develop and test strategies for capturing, reporting, and disseminating key outcomes (e.g., worksheets, toolkits, scorecards).

Policy and economics

- Evaluate the role of setting regional targets for home dialysis utilization on usage rates
- In regions with limited dialysis availability, explore the role of home dialysis and its delivery as a sustainable, low-cost approach.
- Develop policies that enable and improve access to technological innovation for home dialysis.
- Examine initiatives that reduce the ecological impact of dialysis.
- Evaluate and compare implementation of health economic models for dialysis delivery and their impact on home dialysis use.
- Evaluate whether the outcomes of PD-first policies are modified by differing local and regional circumstances.
- Evaluate whether physician reimbursement impacts rates of home dialysis utilization.
- Evaluate the cost-effectiveness of different models of assisted home dialysis.

Facility and organizational culture

- Develop and test mechanisms that build a culture of confidence around home therapies for healthcare professionals, patients, and care-partners.
- Understand the best approaches to share expertise among networked facilities.
- Develop and test tools that assess and address physician and healthcare team bias in modality selection.
- Develop and test tools to assess home dialysis unit organizational culture.

Modality education and decision-making

- Evaluate approaches to enhance shared decision-making and assess and measure shared decision-making uptake and effectiveness.
- Develop unbiased, commercial-free educational programs for staff, patients, care-partners, and family members.
- Evaluate and compare models of training, including the following: virtual and personalized training; online education (providers and patients); hybrid individual training and group training; remote and home training; integrated in-center and teaching-specific facilities that focus on self-care dialysis skills; transitional care facilities and standard dialysis facilities; and subspecialty home dialysis facilities and mixed facilities.
- Measure the impact of patient motivation and ability, for example, using patient activation measures and their role in home dialysis utilization.
- Use virtual platforms and leverage existing technology to develop novel methods (i.e., simulations) for education and training (especially for cannulation).
- Evaluate best models for peer support (live and video) from experienced units and assess their impact on patient-reported outcomes and home dialysis utilization.

Technology, monitoring, and support

- Evaluate effectiveness of eHealth interventions and their integration into home management.
- Enhance communication and cooperation between dialysis providers and primary care providers.
- Evaluate the role of telehealth, remote monitoring, and virtual patient encounters on home dialysis utilization.
- Assess the prevalence of care-partner burnout and how it impacts home dialysis utilization.

Modality transition

- Analyze data from population-based registries on transitions between dialysis modalities and identify areas for improvement.
- Analyze perspectives of patients, care-partners, and health professionals on the process of transitioning.
- Identify predictive factors of switching from in-center to home HD/PD and predictive factors of switching among home modalities.
- Assess outcomes of patients who switch modalities, moving from in-center to home dialysis or among home modalities; map the recruitment pathway to facilitate this transition; and identify optimal transition pathways from PD to home HD.

Assisted home dialysis

- Standardize definitions and data collection (clinical and economic) on assisted home dialysis.
- Initiate cost-effectiveness analyses of assisted home dialysis compared to unassisted home dialysis across a broad range of models of care delivery and regions.
- Compare paid versus unpaid assistance and type of assistance (professional vs. family).
- Design studies inclusive of patient-centered outcomes and family-member outcomes (burden of care, physical and emotional fatigue, etc.) and consider comparator groups of nondialytic conservative care and alternate dialysis modalities.

HD, hemodialysis; PD, peritoneal dialysis.

access type,⁴³ and body mass index⁴³ affect relative survival with PD or ICHD. Two prospective randomized controlled trials explored whether outcomes for those starting ICHD differ from outcomes for those starting PD. The first study ended prematurely, due to low enrollment,⁴⁴ and the second study had a substantial number of patients who declined randomization to modality.⁴⁵ These studies underscore the important role of patient choice in dialysis modality selection

and illustrate logistical challenges that limit feasibility of controlled trials to compare home versus in-center dialysis.⁴⁵

Hemodialysis at home versus in-center. Several observational studies have compared home HD with ICHD. Although interpretation of these studies needs to be taken in the context of the various home HD prescriptions evaluated, findings have generally suggested that home HD is associated with lower rates of hospitalization, decreased mortality, and

- Dependent on country's healthcare needs, resources, and priorities
- Key factors influencing home dialysis access may vary at different time-points with changing priorities
- Priorities may differ between policymakers, healthcare payers, clinicians, and patients/caregivers

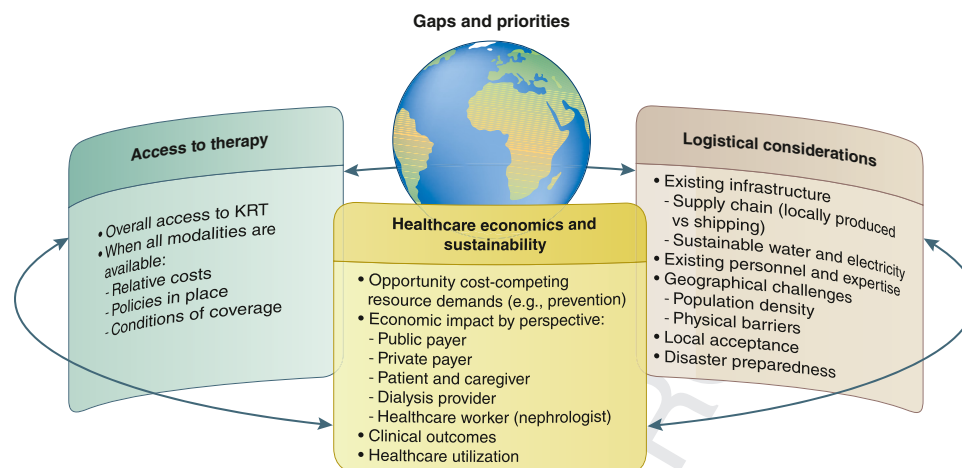


Figure 2 | Global perspectives on access to home-based dialysis. KRT, kidney replacement therapy.

fewer adverse non-access events.^{46–51} Limited randomized controlled trial data suggest that intensive HD improves blood pressure control, regresses left ventricular hypertrophy, and normalizes phosphate levels without dietary restrictions, but adverse vascular access events may be increased.^{4,52} Given inherent biases in observational data and limited published subgroup data, still unclear is whether clinically important outcomes differ by modality, and, if so, which populations are most likely to derive substantial benefits from home dialysis versus ICHD.

Quality of life

Home versus in-center dialysis. Health-related quality of life is highly valued by patients and their families. Data from randomized controlled trials and observational studies^{53–55} comparing PD with ICHD have found only small differences in health-related quality of life by modality, with a marginally better physical component score among PD patients.^{7,53} In categorical analyses, 23% to 39% of ICHD patients, and 14% to 24% of PD patients, had the highest burden range (burden score <25), and 8% to 25% of ICHD patients, and 10% to 37% of PD patients, had the lowest reported burden.¹³ A study from the United Kingdom of frail, older patients highlighted similar quality of life with assisted PD and ICHD,^{54–56} although, an important finding is that older patients report being more satisfied with PD.^{54,57}

Table 3 | Factors required for expanding use of home dialysis within a healthcare system

- Healthcare policy (e.g., home dialysis–first policies)
- Fiscal resources
- Organizational structure
- Provider incentives and accountability
- Measurement of impact and ongoing feedback

Quality and performance metrics for evaluating home dialysis programs

As home dialysis programs expand, identification of the most-appropriate metrics to use for assessing and enabling improvement of care is key. Data from the Standardized Outcomes in Nephrology (SONG) initiative indicate that life participation and fatigue are 2 key patient concerns in the dialysis community,^{58,59} yet these outcomes are challenging to measure and are therefore infrequently incorporated into quality-assessment programs. Additionally, very few of the quality practice indicators used to assess dialysis practice, such as vascular access type, blood stream infections, and calcium and phosphorus levels, directly address home dialysis. Others, including measures of small solute clearance (e.g., Kt/V), have limited evidence to support their use in individuals on home dialysis and, when implemented, may disadvantage facilities in quality-assessment programs.⁶⁰

Although efforts are in progress,⁶¹ standardization of metrics across countries or regions is lacking. A home-dialysis–specific (home HD and PD) patient experience measure has been developed for use in the US,⁶² although comparison of PROMs (patient-reported outcome measures) and PREMs (patient-reported experience measures) among sites of care and among patients can be difficult.

Quality metrics need to be feasible to implement (not limited by economic status or healthcare setting), standardized to reduce heterogeneity nationally and internationally, and meaningful to all end-users (Table 4⁶³). Tools to define quality can include measures of structure, process, and outcomes, with the first 2 items serving as surrogates for the third.⁶⁴ Patient-, center-, and policy-level components should be balanced to measure the feasibility and outcomes of home dialysis expansion, keeping the patient's perspective central while integrating facility-level and national-level metrics.

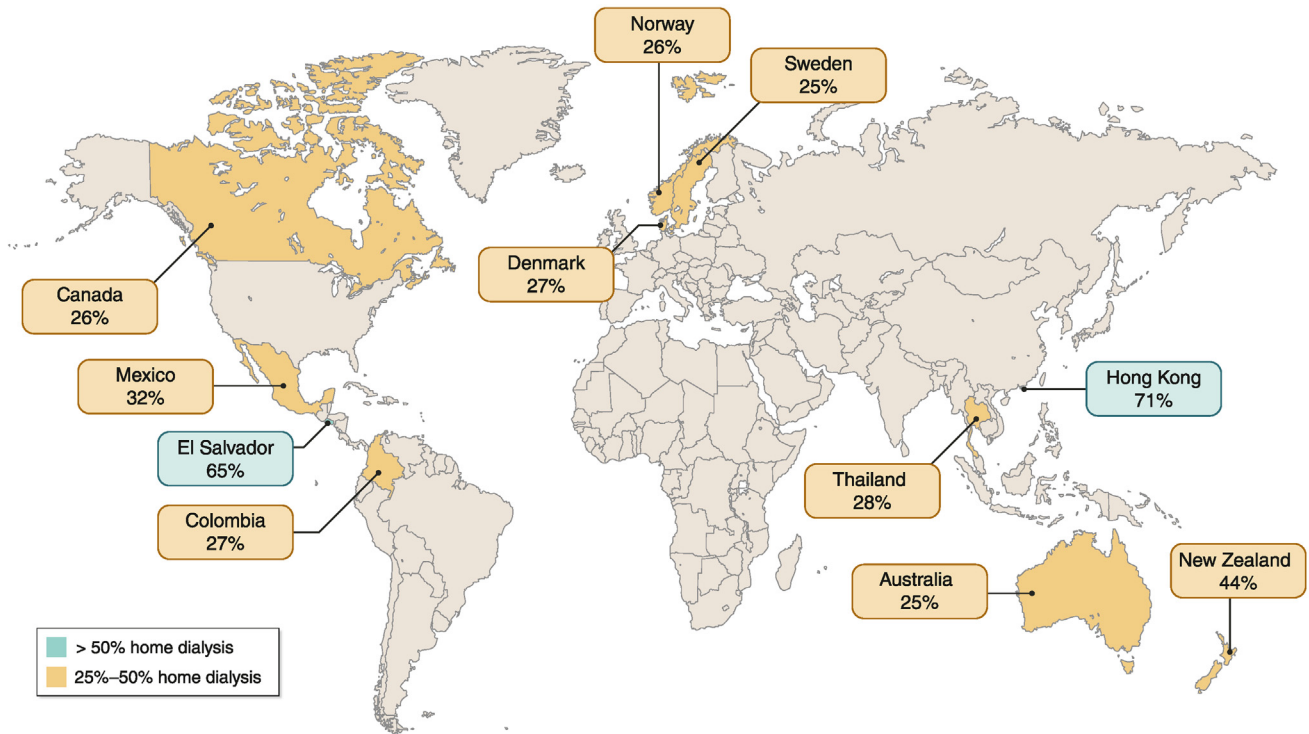


Figure 3 | Representation of countries with high utilization of home-based dialysis in prevalent patients with kidney failure. Countries with high utilization of home dialysis have implemented home dialysis–first or –preferred policies. Home dialysis–first policies have largely centered around peritoneal dialysis (as in Hong Kong,²⁴ Thailand,²⁵ Mexico,²⁶ and Colombia²⁷), although in some countries, home dialysis–preferred policies have included home-based hemodialysis (as in Canada, Australia, New Zealand, and multiple Scandinavian countries). Home dialysis–preferred policies may be implemented regionally within a given country and vary by the degree of financial incentives. Figures obtained from US Renal Data System 2020 Annual Data Report,²⁸ except for Thailand,²⁵ and Australia and New Zealand.²⁹

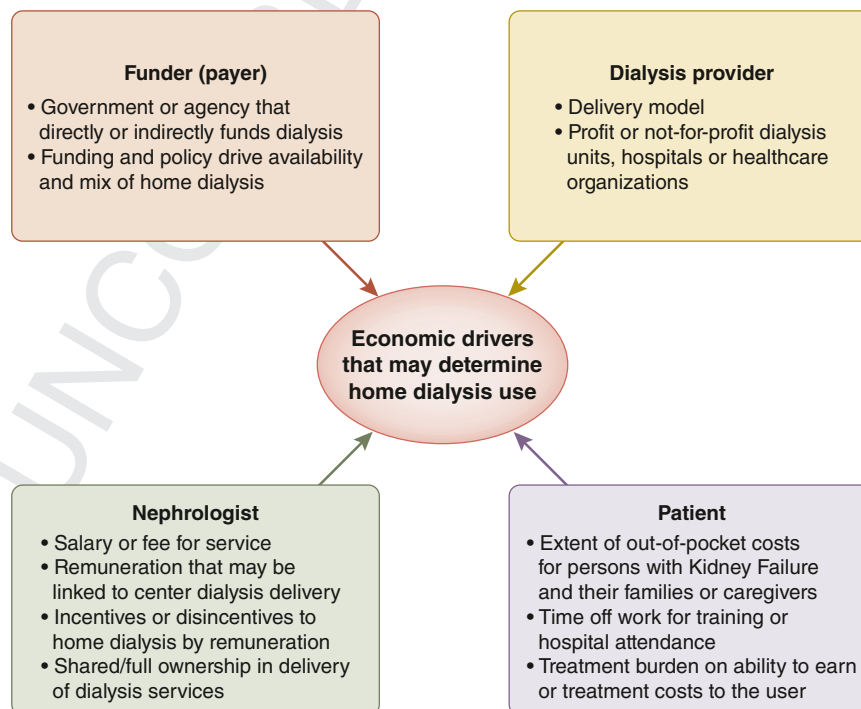


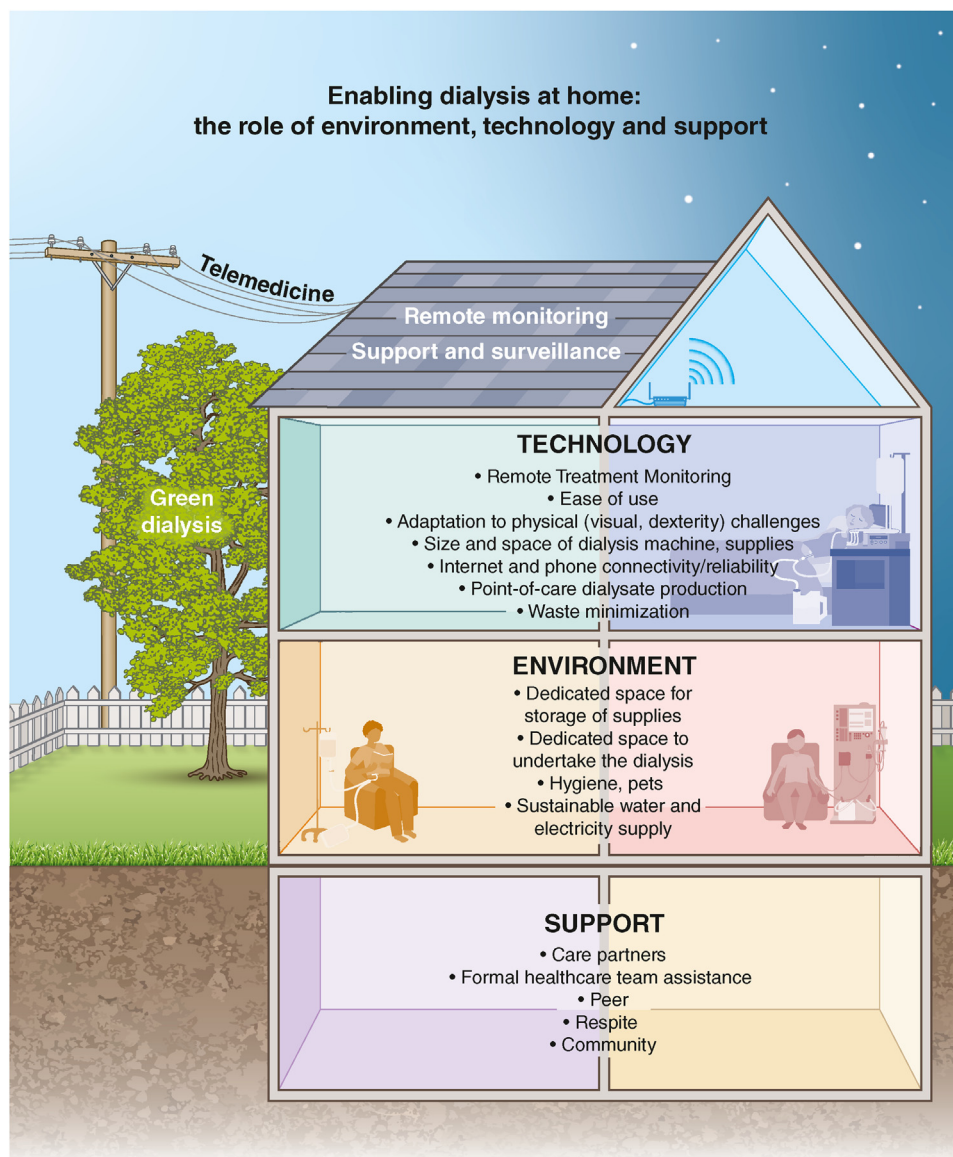
Figure 4 | Economic drivers influencing use of home-based dialysis.

Table 4 | Potential quality metrics in home dialysis

	Challenges in applying a standardized definition	PD	Home HD
Patient survival	<ul style="list-style-type: none"> Heavily dependent on comorbidities and frailty Whether to classify and capture cause of death Whether to include dialysis withdrawal as a death event How to account for deaths after transition to center-based therapy (these may be premorbid events underestimating home dialysis-related mortality). 	X	X
Technique survival	<ul style="list-style-type: none"> Most experience relates to PD, but has a role in the understanding of home HD What constitutes technique failure? <ul style="list-style-type: none"> Classify temporary transition (whether to include specific time intervals) and the particular value of death-censored technique failure Work is underway to standardize causes 	X	X
Patient-reported experience and outcomes measures	<ul style="list-style-type: none"> Selection of kidney-specific versus generic measures Impact of repeated assessments and floor/ceiling effects Response bias including disparities among responders versus non-responders⁶³ Heterogeneity of domains Uncertainty regarding goal—specifically, whether the focus should be on modifiable outcomes or identification of key issues Cultural and health literacy generalizability 	X	X
Hospitalization	<ul style="list-style-type: none"> Separate tools potentially needed for care-partners Uncertainty regarding whether time in hospital (e.g., length of stay) versus frequency of hospitalization is paramount (e.g., rate) Attribution to a home versus in-center modality for recent modality change Differentiating “good” hospitalizations (transplant, elective procedures) from “avoidable” hospitalizations Emphasis on readmission versus initial admission 	X	X
PD infections and peritonitis	<ul style="list-style-type: none"> Heterogeneity of data capture Some subjectivity in the definition of a PD-related infection Work underway to standardize metric focusing on episodes per patient-year as defined by the ISPD 	X	
Residual kidney function	<ul style="list-style-type: none"> Uncertain numerator and denominator Heterogeneity of causes of residual kidney function loss, with some etiologies potentially avoidable and other loss nonmodifiable Variability in assessment with some relying on volume and others on measures of solute clearance High patient burden with collection, and frequent inaccuracy 	X	X
Biochemical markers of small solute clearance	<ul style="list-style-type: none"> Limited data supporting a specific target threshold for small-molecule clearance Focus on numbers rather than overall well-being to make treatment decisions Lack of universal data standards, including determining inputs into Kt/V calculations 	X	X
Noninfectious catheter loss	<ul style="list-style-type: none"> Many causes not modifiable Regional factors influence access to advanced surgical techniques (such as laparoscopy) Standardized definitions (work underway) Registries often do NOT capture access loss prior to PD commencement, missing a high number of individuals with early mechanical complications 	X	
Vascular access infection	<ul style="list-style-type: none"> Balancing patient preference versus risk, particularly with buttonhole cannulation May disincentivize more frequent hemodialysis, as the more an access is used, the higher the risk of infection May disincentivize home hemodialysis among those with fears of using arteriovenous access by disincentivizing use of central venous catheters 		X
Noninfectious vascular access loss	<ul style="list-style-type: none"> Relatively low numbers of accesses lost Instruments under development 		X
Adverse procedure-related events	<ul style="list-style-type: none"> Relatively rare events Dependent on patient self-report, resulting in limited and inconsistent ascertainment 	X	X
Water quality	<ul style="list-style-type: none"> Likely topped out for use as a metric Clear link between standards and outcomes is missing 	X	

HD, hemodialysis; ISPD, International Society for Peritoneal Dialysis; PD, peritoneal dialysis.

When developing and implementing home dialysis quality measures, potential items to evaluate include the proportion of people that select a modality who ultimately receive that modality, as well as the rate of transfer from the home modality to ICHD. The reasons for discontinuing a modality and whether these reasons are modifiable are important to track.



816 **Figure 5 | Enabling dialysis at home.**

817
818
819
820
821
822
823
824
825
826
827
828
829
830
831
832
833
834

These data need to be conceptualized within the context of conservative care and kidney transplantation utilization, both of which vary widely across jurisdictions, impacting measures of home dialysis utilization. Additional metrics and domains are discussed in Table 4. Ideally, any list of measures would be parsimonious, would be updated frequently to maintain relevance and immediacy to clinical care, and would help alleviate rather than reinforce disparities in home dialysis utilization.⁶⁵

829 CHOOSING HOME DIALYSIS

830
831
832
833
834

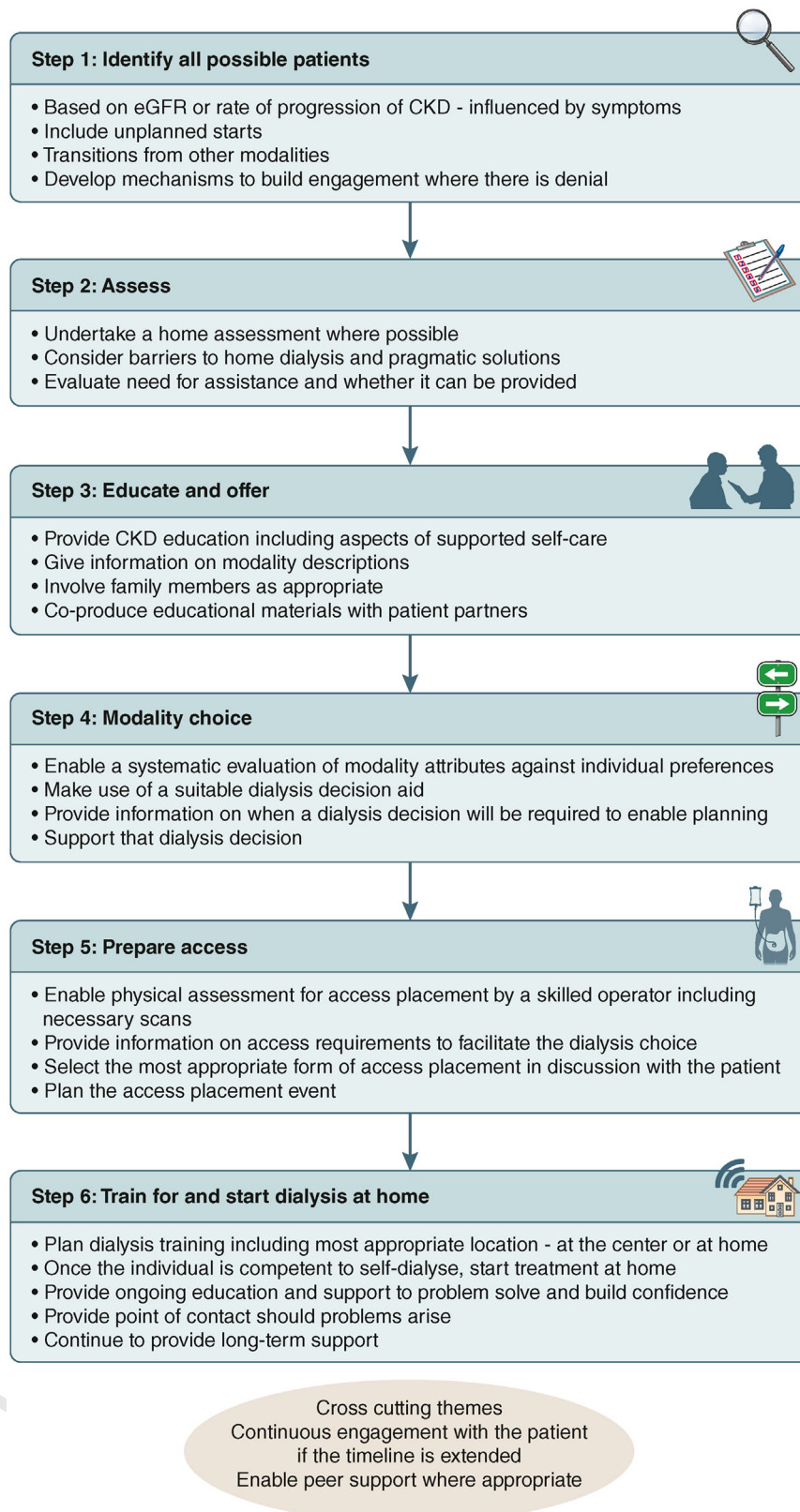
Given evidence suggesting only small differences in outcomes between home and in-center dialysis, modality choice should be preference-sensitive, informed, and individualized based

835
836
837
838
839
840
841
842
843
844
845
846
847
848
849
850
851
852
853
854
855
856
857
858
859
860
861
862
863
864
865
866
867
868
869
870
871
872
873
874
875
876
877
878
879
880

on perceived quality of life, life goals, and symptom burden. Ideally, individuals, their care-partners, and their healthcare teams will decide together on the most appropriate initial modality, using shared decision-making.⁶⁶ Choices may be more widely available in higher-income regions, where KRT options are less likely to be constrained by economic factors.

881
882
883
884
885
886
887
888
889
890

Clinician bias and approach have a strong influence on patient decision-making.⁶⁷ Incumbent upon clinicians is presentation of both dialysis and dialysis modality as choices, emphasizing that several treatment options exist and that many individuals with kidney failure will require, over time, several different kidney failure treatment modalities. Currently, the number of dedicated educators on dialysis modalities is insufficient, especially those who can



Adapted from Blake, P. et al, PDI, 2013; 33(3): 233–241

Figure 6 | The chronic kidney disease (CKD) home therapies evaluation and assessment pathway. Based on Blake *et al.*, 2013.⁷² eGFR, ^{Q22} estimated glomerular filtration rate.

provide an unbiased, comprehensive view of the spectrum of kidney failure treatment options, including PD, home HD, in-center hemodialysis, transplant, and nondialysis conservative care.⁶⁸

Patient considerations

Factors that have been associated with lower uptake of home dialysis are male sex, minority ethnicity, older age, greater comorbid burden, late referral to kidney care, lower socioeconomic status, obesity, and close proximity to dialysis centers.^{69,70} Patient subgroups, including indigenous populations, minority ethnicities, certain religious groups, displaced persons, lower socioeconomic groups, and those with language barriers, lower health literacy, or cognitive impairment may have more barriers to engaging in decision-making and/or to being offered alternative modalities. These individuals require responsive strategies. Community and cultural experiences can influence individual choice; individuals may feel shame about being ill or that discussions about illness are taboo.

Pragmatically, multiple resources are needed for successful home dialysis, including a safe and clean environment, access to technology, and in many cases, support from family or community (Figure 5). Those who require physical support in performing dialysis may not have a care-partner or access to home support or paid care. Certain programs may discourage or may not support home dialysis for persons who live alone. Patients and families may be concerned about assuming responsibility for therapy, risk of infections, or a perceived lack of support, or they may believe that home therapy represents suboptimal or substandard care. Individuals may worry about imposing treatment on family/household members, and indeed, patients and their families can become fatigued, especially with long-term home care. Space in the home may be limited for materials and equipment, and some individuals may want to separate their home life from dialysis treatments. Waste management and environmental hygiene can also impact decision-making.

That stated, home dialysis has few absolute contraindications. Unstable or insufficient housing may be a barrier to both home HD and PD. Lack of a viable peritoneum, such as when the peritoneum has been damaged through surgery or inflammation, is an absolute contraindication for PD. Lack of vascular access is an absolute contraindication to home HD. Critically, a contraindication to one home modality, such as no remaining HD vascular access sites, may be a firm indication for a different home modality, such as PD. Relative contraindications to home dialysis exist on a spectrum (for example, mental health and cognitive impairment disorders) and potentially may be overcome with environmental modifications, technology adaptation, and assistance from care-partners or professionals.

Dialysis at home should not be limited to patients with high levels of activation and involvement in self-care. No threshold of these characteristics should determine candidacy; these can be developed with appropriate education and

support.⁷¹ For individuals who are reviewed in chronic kidney disease clinics, recurrent evaluation and iterative education and preparedness planning, governed by principles of shared decision-making, are important (Figure 6).⁷² Emotional preparedness, and therefore support, is as important as educational preparedness and may require input from trained mental health professionals. Informing those who start ICHD urgently that changing modality after clinical improvement is a possibility is important.

PATIENT TRAINING

The association between patient-targeted education interventions and the subsequent choice and receipt of PD is strong.⁷³ Uptake of home HD can be increased through stepwise efforts to support and train individuals to participate in specific tasks related to their HD treatment.^{71,74} Educational strategies and formats for training and evaluation vary,^{73,75,76} and they exist for many aspects of dialysis care,⁷⁷ peer support, and peer education.^{78,79}

Above all, education should be iterative, culturally sensitive, and consistent when provided by different team members. For individuals without predialysis care, education that occurs early in the dialysis tenure is imperative. For those who have unplanned starts, a pathway designed for early education that includes home opportunities should be established in each program. Having a dedicated team for new-start patients after discharge from hospital can facilitate education for individuals who may not have received predialysis education or made their modality decision.^{80,81} Education can be provided in groups or one-to-one with healthcare teams, videos (internet, virtual, or video-based), written materials, and peer support. Using a variety of education methods is important, to accommodate learning styles. Educators must have a clear grasp of both home and in-center modalities. Training for healthcare professionals, critical to successful home dialysis programs, is discussed below. Improving clinician education and providing support to small centers are critical for increasing home dialysis utilization.

Qualitative studies evaluating barriers to home HD uptake indicate that self-cannulation is a significant source of fear and anxiety. Resources are needed to help overcome these fears and instill patient confidence.^{82–84} In some cases, use of a central venous catheter rather than arteriovenous access may be a practical, although controversial, solution. Shared center-based HD care, whereby individuals are provided with support and given the choice to learn and perform tasks relating to their own care, may instill important principles of self-management, enabling more people to consider home dialysis.⁷¹ This requires that all dialysis nurses and care professionals receive specific training, so that patient education becomes part of the routine delivery of care.

Availability of a range of PD catheter-insertion techniques, including percutaneous and surgical, allows use of the most appropriate approach given the individual patient characteristics. The percutaneous technique utilized by expert operators can often enable PD to be started in a timely manner for

Table 5 | Different models of assisted peritoneal dialysis delivery

Country	Healthcare system funded	Model of care	Comments
France ⁹⁵	Community nurses	Mostly CAPD 3–4 visits; some APD 2 visits	51% incident patients with assisted PD: 82% nurse assisted and 18% family assisted ^{Q15}
Denmark ^{96,97}	Community nurses or nursing home staff	Predominantly APD with 2 visits	Assisted program also used to support urgent start of PD
Ontario, Canada ^{98,99}	Community nurses	APD 1–2 visits/d	Family assistance also required for some tasks; many also have access to integrated geriatric care
British Columbia, Canada ¹⁰⁰	Community non-healthcare professionals with PD training	APD 1 visit/d	Family assistance also required for some tasks
United Kingdom ⁵⁶	Non-healthcare professionals with PD training	Predominantly APD 1 visit/d; 2 visits/d APD, or CAPD supported in some centers	Assistants predominantly from healthcare agency organized by commercial supplier of PD fluid; some units employ own assistants; healthcare system reimburses 1 visit.
Brazil ¹⁰¹	Nurse assistant	APD 1–2 visits/d	Single-center experience; PD funded by renal center, as not reimbursed by public healthcare system
China ^{102,103}	Family, home care assistant, younger PD patients	CAPD	Funded by family/patient; some centers train younger PD patients to assist older ones
Saudi Arabia ¹⁰⁴	Family, home care assistant	CAPD, APD	Funded by family/patient; single-center report

APD, ambulatory peritoneal dialysis; CAPD, continuous APD; PD, peritoneal dialysis.

suitable individuals, whereas advanced laparoscopic surgical approaches may be preferred in complex patients and those with intra-abdominal considerations.^{85,86}

Peer support should be facilitated by dialysis programs because it provides vital and unique insights for new patients who are considering home therapies. Dialysis programs can work with local patient kidney organizations; in the United Kingdom, the National Kidney Foundation has initiated such a program (<https://www.kidney.org.uk/peer-support>).⁷⁹ Webinars or seminars targeted to patients and families can address myths relating to home dialysis and can ease individual concerns by providing open-question periods. Patient and care-partner input into the development of these programs is crucial (including prevalent home-dialysis patients and those who did not choose home dialysis). Studies of whether peer support groups increase home dialysis utilization are needed. Home visits support individual and family confidence in the home. Managing patient expectations and specifying that a change of modalities may be necessary in the future are important. Anxiety is common with early in-home practice, and provision of details regarding support contacts is essential, for reassurance and to enable problem solving. Reassurance should be provided that nursing or medical and technical support will continue when patients are at home.

Although no clear evidence indicates that decision aids impact usage of home dialysis, they can improve patient clarity and autonomy in decision-making and increase perception of control.⁸⁷ Example decision aids are the Yorkshire Dialysis decision aid,⁸⁷ the SHERPA decision aid, the National Patient Decision Aid for Established Renal Failure, the My Kidneys My Choice aid, and the Decision Aid for

Renal Therapy.⁸⁸ They should be employed as part of, and not as a replacement for, standard in-person education. A 3-talk model of shared decision-making comprises a series of sessions for dialysis education, exploration of potential benefits and drawbacks for each modality, and a decision talk in which the patient decision is made and evaluated.^{89,90}

Patients report having a positive feeling toward remote consultation and monitoring, but they feel that neither should replace face-to-face clinical contact.^{91–93} Remote monitoring may be embraced by clinicians as a means of assessing whether patients are safely using home dialysis. Despite the high interest in using remote monitoring, good-quality evidence of effectiveness is needed before its widespread use in home dialysis is implemented.⁹⁴

Assisted home dialysis

Assisted home dialysis refers to the provision of assistance to individuals receiving home dialysis by care-partners (i.e., family or friends), or hired staff (i.e., professionally trained dialysis nurses, personal support workers, community health workers, or other skilled aides) (Table 5^{95–104}). Assistance can be nontechnical (for example, carrying dialysate bags into patient rooms), technical (machine setup, dialysis-related operations), clinical (evaluation of exit site, fluid-volume assessment), partial or complete, temporary or permanent, and paid or unpaid.

Family assistance for PD is ubiquitous, as reflected by evidence that the presence of social support is associated with greater uptake of PD.¹⁰⁵ Healthcare-provided assistance is more limited. France has the longest experience of assisted PD, predominantly as assisted continuous ambulatory PD using community nurses.⁹⁵ In the United

Kingdom, assisted PD provided by healthcare assistants has been shown to increase the rate of PD initiation, particularly in older patients.¹⁰⁶ Funded assisted PD, however, is not available in the majority of European countries.¹⁰⁷ Data from Canada indicates that nurse-assisted PD is associated with better technique survival, compared with that of family or self-care PD.¹⁰⁸

Unpaid care-partner assistance occurs commonly. The majority of assisted PD in Asia and the Middle East is performed by domestic helpers, often as an additional workload.^{109,110} In Malaysia, full or partial assistance by care-partners is defined in a renal registry, and no community nurse assistance is available. In the US, access to assistance is limited; some individuals have unpaid care-partners or hire private assistants. Notably, a recent feasibility study showed that appropriately trained nonregistered nurse assistants can successfully support patients on PD within the US healthcare system, at least on a temporary basis.¹¹¹

For assisted home dialysis, relative program evaluations are difficult. A recent systematic review and jurisdictional scan evaluating the role of assisted PD across 34 studies, 46,597 patients, and 20 jurisdictions could not demonstrate clear clinical and economic benefits of PD assistance.¹¹² This failure to find benefit was likely due to the heterogeneity of study quality, outcomes, and models and types of assistances. Cost effectiveness and clinical outcomes evaluations of assisted home dialysis can be considered against both center-based dialysis and conservative, nondialysis care.

Strategies to decrease care burden without substantially increasing costs could include the following: adjusting the prescription for residual kidney function (fewer exchanges per day or incorporating days off dialysis, referred to as incremental dialysis); early and frequent education and monitoring for burnout; time-limited staff-assisted home dialysis during periods in which technique failure or complication rates are high (e.g., after falls or fractures); public-private partnerships (cost-sharing between government and dialysis organizations); and nominal incentives to care-partners (monetary or otherwise).

Care-partners require specific support; data suggest that their quality of life is poorer than that of the general population.¹¹³ The optimal methods for educating and supporting care-partners of dialysis patients are not clear. Care-partners may benefit from some “time out” or “respite” that is scheduled proactively; this time is an important part of home dialysis programs (provided resources are adequate to support this approach). This respite can be provided as assistance or ICHD for distinct time periods or limited days, such as 1–3 days per week. Routine evaluation for burnout and proactive referrals are essential.

HOME DIALYSIS PROGRAM DEVELOPMENT AND PROVIDER EDUCATION

Home dialysis programs engage multiple stakeholders to serve the local community.¹¹⁴ Although each program is unique,

development of a home dialysis program is underpinned by certain key principles, including the following: equity of access; patient, care-partner, and/or other stakeholder involvement; the addressing of population needs within the local healthcare system; clinical leadership; shared decision-making; and a quality-improvement culture.¹¹⁵ Successful PD and home HD access programs are vital parts of all dialysis programs, with home dialysis integrated with existing ICHD and transplantation, such that each modality is viewed as complementary, not competitive. An organized, standardized approach is needed to identify new dialysis starts, assess home dialysis eligibility, and provide modality education and support while enabling individuals to make an informed decision regarding a treatment strategy.¹¹⁶ Complex, multi-system, evidence-based systematic clinic-based interventions (i.e., education, feedback, and audits) have not always demonstrated benefit of increased utilization of home dialysis. This finding underscores the importance of stakeholder accountability (i.e., incentives/penalties) and feedback from patients’ care-partners and providers for the success of any intervention. The development and implementation of local quality-improvement initiatives may be more successful for increasing home dialysis utilization than top-down approaches.¹¹⁷

A roadmap for developing home dialysis programs includes local assessment of needs; mentorship/support by local/regional expertise; a realistic plan for growth, underpinned by adequate resources and staff requirements, with competencies, safety training, and retention support; and standardization of processes and procedures (e.g., patient education, access creation, and treatment of common complications). Facility culture is key for maintaining a successful program.¹¹⁸

The most appropriate working arrangements for care teams will be influenced by the patient population and the number of available staff across disciplines. A meta-analysis of 10 studies of PD found a mortality benefit with larger centers,¹¹⁹ although this could be due in part to newer centers having a smaller number of patients. These findings also suggest that smaller centers may need additional support over time.

Training health professionals

All healthcare professionals involved in caring for persons with kidney disease should receive early and comprehensive core training in all KRT options, including home dialysis.¹²⁰ This training should include contact during fellowship training that involves treating patients with home dialysis; such training is important both for building physician confidence in home dialysis care and limiting physician bias regarding home dialysis eligibility among certain individuals or patient groups.¹²¹ Continuous maintenance training is necessary for nephrologists and nurses. Training should be underpinned by a system of competencies and responsibilities that will differ based upon local resources and healthcare

systems. The full multidisciplinary team contributing to staff education in home dialysis gives a unified message that builds individual confidence.

Home dialysis experts and educators

Home dialysis specialists have a specific skill set that requires recognition—it includes modality expertise combined with complex case management in the home setting. Rotating/mixing these specialists with other subspecialty experts risks diluting this expertise but may be necessary in smaller or resource-limited settings where individuals have multiple responsibilities. Specific home-dialysis educators and navigation specialists are professionals essential to the increased uptake of home therapies, as they can provide patient education that supports modality choice.

Modality transitions

Modality transitions are common and result from complications such as mechanical problems or infections, changes in social circumstances, or the development of additional comorbid conditions.¹²² They can occur among any of the dialysis modalities, are often complex for centers to manage, and can be distressing and frightening for patients. When possible, transitions should be anticipated and planned for,¹²³ with a focus on improving patient quality of life as well as facilitating access to patient-centered HD regimes (e.g., adjustments to the intensity of HD therapy).^{11,124} Successful transition is underpinned by protocols that require the following: comprehensive patient-centered education; support of a multidisciplinary healthcare team; well-defined care models delivered by dedicated staff skilled in patient training, monitoring, and support; and adequate infrastructure and organization.^{11,77,115,123,125,126} Strategies to increase home-to-home dialysis transitions may need to focus on integrating home dialysis (home HD and PD) care whereby equal experience and comfort exists across all home dialysis modalities^{127–129}; addressing unique patient barriers to home HD; and promoting technologic advances that simplify performing either PD or home HD.

Insights from the coronavirus disease 2019 (COVID-19) pandemic

The COVID-19 pandemic demonstrated the need to build system resilience for all possible disaster types and dialysis modalities. It illustrated difficulties in surgical dialysis access prioritization, provision supply chain problems, and vulnerability to staffing shortages.¹³⁰ The pandemic also highlighted the benefits of being able to dialyze at home amidst widespread challenges in obtaining and providing healthcare. Indeed, home dialysis can be advantageous in terms of flexibility and safety,¹³¹ but it relies on the availability of supplies and consistent access to electricity and clean water.¹³² Across some jurisdictions, the use of PD increased during the pandemic, but across many regions, training of new patients and reduction in access to PD catheter insertion may have restricted home dialysis growth.^{133,134} Important lessons

learned from the pandemic to improve home dialysis care and provision include prioritizing strategies and healthcare policies that maximize successful and timely PD access placement, exploring the role of and improving access to telemedicine, building redundancies in facility staffing and home dialysis training resources, and enhancing support so that patients can continue to receive treatment at home.¹³⁵

CONCLUSION

Our consensus conference reaffirmed the need for advocacy and efforts to ensure equitable access to home dialysis to all individuals in need of KRT globally. Multiple research needs exist, and a systematic prioritization would aid implementation, although this undertaking was outside the scope of this conference. The importance of context, choice, and education in facilitating successful home dialysis is clear. There is no one-size-fits-all model for promoting and delivering home dialysis at any level, from patient to facility to healthcare system. Effective approaches are multipronged, engage multiple stakeholders, and take account of local circumstances. Clinical studies comparing modalities are limited in their generalizability; however, existing evidence suggests in-center dialysis, PD, and home HD are sufficiently similar in clinical outcomes to support personalized and individual choice among these options.

The conference agenda, scope of work, and plenary presentations can be found at <https://kdigo.org/conferences/hd/>.

APPENDIX

Other Conference Participants: Alferso C. Abrahams, Netherlands; Samaya J. Anumudu, USA; Joanne M. Bargman, Canada; Geraldine Biddle Moore, USA; Peter G. Blake, Canada; Natalie Borman, United Kingdom [UK]; Elaine Bowes, UK; James O. Burton, UK; Agnes Caillette-Beaudoin, France; Yeoungjee Cho, Australia; Brett Cullis, South Africa; Yael Einbinder, Israel; Osama el Shamy, USA; Kevin F. Erickson, USA; Ana E. Figueiredo, Brazil; Fred Finkelstein, USA; Richard Fluck, UK; Jennifer E. Flythe, USA; James Fotheringham, UK; Masafumi Fukagawa, Japan; Eric Goffin, Belgium; Thomas A. Golper, USA; Rafael Gómez, Colombia; Vivekanand Jha, India; David W. Johnson, Australia; Talerngsak Kanjanabuch, Thailand; Yong-Lim Kim, South Korea; Mark Lambie, UK; Edgar V. Lerma, USA; Robert S. Lockridge, USA; Fiona Loud, UK; Ikuto Masakane, Japan; Nicola Matthews, Canada; Will McKane, UK; David C. Mendelsohn, Canada; Thomas Mettang, Germany; Sandip Mitra, UK; Thyago Proença de Moraes, Brazil; Rachael Morton, Australia; Lily Mushahar, Malaysia; Annie-Claire Nadeau-Fredette, Canada; KS Nayak, India; Joanna L. Neumann, USA; Grace Ngaruiya, Kenya; Ikechi Okpechi, South Africa; Robert R. Quinn, Canada; Janani Rangaswami, USA; Yuvaram N.V. Reddy, USA; Brigitte Schiller, USA; Jenny I. Shen, USA; Rukshana Shroff, UK; Maria Fernanda Slon Roblero, Spain; Laura Solá, Uruguay; Henning Sondergaard, Denmark; Isaac Teitelbaum, USA; Karthik Tennankore, Canada; Floris Van Ommeslaeghe, Belgium; Rachael C. Walker, New Zealand; Robert J. Walker, New Zealand; Angela Yee-Moon Wang, Hong Kong; Bradley A. Warady, USA; Suzanne Watnick, USA; Eric D. Weinhandl, USA; Caroline M. Wilkie, USA; and Jennifer Williams, UK.

DISCLOSURE

The conference was sponsored by KDIGO and was supported in part by unrestricted educational grants from Akebia, AstraZeneca, Baxter, Boehringer Ingelheim, CVS Kidney Care, Fresenius Medical Care, Home Dialyzers United, Lilly, Otsuka, Outset, and US Renal Care.

ACKNOWLEDGMENTS

The authors thank Jennifer King, PhD, for assistance with manuscript preparation.

REFERENCES

1. Walker RC, Hanson CS, Palmer SC, et al. Patient and caregiver perspectives on home hemodialysis: a systematic review. *Am J Kidney Dis.* 2015;65:451–463.
2. Dahlerus C, Quinn M, Messersmith E, et al. Patient perspectives on the choice of dialysis modality: results from the Empowering Patients on Choices for Renal Replacement Therapy (EPOCH-RRT) Study. *Am J Kidney Dis.* 2016;68:901–910.
3. Chaudhary K, Sangha H, Khanna R. Peritoneal dialysis first: rationale. *Clin J Am Soc Nephrol.* 2011;6:447–456.
4. Culleton BF, Walsh M, Klarenbach SW, et al. Effect of frequent nocturnal hemodialysis vs conventional hemodialysis on left ventricular mass and quality of life: a randomized controlled trial. *JAMA.* 2007;298:1291–1299.
5. McFarlane PA, Pierratos A, Redelmeier DA. Cost savings of home nocturnal versus conventional in-center hemodialysis. *Kidney Int.* 2002;62:2216–2222.
6. Rubin HR, Fink NE, Plantinga LC, et al. Patient ratings of dialysis care with peritoneal dialysis vs hemodialysis. *JAMA.* 2004;291:697–703.
7. Chuasuwan A, Pooripussarakul S, Thakkinstian A, et al. Comparisons of quality of life between patients underwent peritoneal dialysis and hemodialysis: a systematic review and meta-analysis. *Health Qual Life Outcomes.* 2020;18:191.
8. Jain AK, Blake P, Cordy P, et al. Global trends in rates of peritoneal dialysis. *J Am Soc Nephrol.* 2012;23:533–544.
9. Harris DCH, Davies SJ, Finkelstein FO, et al. Increasing access to integrated ESKD care as part of universal health coverage. *Kidney Int.* 2019;95:S1–S33.
10. Liyanage T, Ninomiya T, Jha V, et al. Worldwide access to treatment for end-stage kidney disease: a systematic review. *Lancet.* 2015;385:1975–1982.
11. Chan CT, Blankestijn PJ, Dember LM, et al. Dialysis initiation, modality choice, access, and prescription: conclusions from a Kidney Disease: Improving Global Outcomes (KDIGO) Controversies Conference. *Kidney Int.* 2019;96:37–47.
12. Flythe JE, Chang TL, Gallagher MP, et al. Blood pressure and volume management in dialysis: conclusions from a Kidney Disease: Improving Global Outcomes (KDIGO) Controversies Conference. *Kidney Int.* 2020;97:861–876.
13. Brown EA, Zhao J, McCullough K, et al. Burden of kidney disease, health-related quality of life, and employment among patients receiving peritoneal dialysis and in-center hemodialysis: findings from the DOPPS Program. *Am J Kidney Dis.* 2021;78:489–500.e1.
14. Cho Y, Bello AK, Levin A, et al. Peritoneal dialysis use and practice patterns: an international survey study. *Am J Kidney Dis.* 2021;77:315–325.
15. Organisation for Economic Co-operation and Development. OECD health statistics 2021. Accessed September 9, 2021. <https://www.oecd.org/health/health-data.htm>
16. Laupacis A, Keown P, Pus N, et al. A study of the quality of life and cost-utility of renal transplantation. *Kidney Int.* 1996;50:235–242.
17. Canadian Agency for Drugs and Technologies in Health (CADTH). Dialysis modalities for the treatment of end-stage kidney disease: a health technology assessment—project protocol. CADTH optimal use report. No. 6.2a. Accessed July 14, 2022. <https://www.ncbi.nlm.nih.gov/books/NBK409527/>
18. van der Tol A, Lameire N, Morton RL, et al. An international analysis of dialysis services reimbursement. *Clin J Am Soc Nephrol.* 2019;14:84–93.
19. Chuengsamarn P, Kasemsup V. PD first policy: Thailand's response to the challenge of meeting the needs of patients with end-stage renal disease. *Semin Nephrol.* 2017;37:287–295.
20. Changsirikulchai S, Sriprach S, Thokanit NS, et al. Survival analysis and associated factors in Thai patients on peritoneal dialysis under the PD-first policy. *Perit Dial Int.* 2018;38:172–178.
21. Barraclough KA, Agar JWM. Green nephrology. *Nat Rev Nephrol.* 2020;16:257–268.
22. Karopadi AN, Mason G, Rettore E, et al. Cost of peritoneal dialysis and haemodialysis across the world. *Nephrol Dial Transplant.* 2013;28:2553–2569.
23. Weinhandl ED, Saffer TL, Aragon M. Hidden costs associated with conversion from peritoneal dialysis to hemodialysis. *Kidney360.* 2022;3:883–890.
24. Li PK-T, Lu W, Mak S-K, et al. Peritoneal dialysis first policy in Hong Kong for 35 years: global impact. *Nephrology.* 2022;27:787–794.
25. Kanjanabuch T, Takkavatakarn K. Global dialysis perspective: Thailand. *Kidney360.* 2020;1:671–675.
26. Vasquez-Jimenez E, Madero M. Global dialysis perspective: Mexico. *Kidney360.* 2020;1:534–537.
27. Sanabria M, Devia M, Hernández G, et al. Outcomes of a peritoneal dialysis program in remote communities within Colombia. *Perit Dial Int.* 2015;35:52–61.
28. US Renal Data System. 2022 annual report. End stage renal disease: Chapter 11: International comparisons. Figure 11.16. Distribution of dialysis modality in prevalent patients with ESRD, by country/region. 2020. Accessed December 4, 2022. <https://usrds-adr.niddk.nih.gov/2022/end-stage-renal-disease/11-international-comparisons>
29. US Renal Data System. 2021 annual report. End stage renal disease: Chapter 11: International comparisons. Figure 11.16. Distribution of dialysis modality in prevalent patients with ESRD, by country/region. 2019. Accessed December 1, 2022. <https://usrds-adr.niddk.nih.gov/2021/end-stage-renal-disease/11-international-comparisons>
30. Ahmad M, Wallace EL, Jain G. Setting up and expanding a home dialysis program: Is there a recipe for success? *Kidney360.* 2020;1:569–579.
31. Manns B, Agar JWM, Biyani M, et al. Can economic incentives increase the use of home dialysis? *Nephrol Dial Transplant.* 2019;34:731–741.
32. Wallace EL, Allon M. ESKD treatment choices model: Responsible home dialysis growth requires system changes. *Kidney360.* 2020;1:424–427.
33. Han SS, Park JY, Kang S, et al. Dialysis modality and mortality in the elderly: a meta-analysis. *Clin J Am Soc Nephrol.* 2015;10:983–993.
34. Marshall MR, Hawley CM, Kerr PG, et al. Home hemodialysis and mortality risk in Australian and New Zealand populations. *Am J Kidney Dis.* 2011;58:782–793.
35. Mehrotra R, Chiu YW, Kalantar-Zadeh K, et al. Similar outcomes with hemodialysis and peritoneal dialysis in patients with end-stage renal disease. *Arch Intern Med.* 2011;171:110–118.
36. Liem YS, Wong JB, Hunink MG, et al. Comparison of hemodialysis and peritoneal dialysis survival in The Netherlands. *Kidney Int.* 2007;71:153–158.
37. Vonesh EF, Snyder JJ, Foley RN, et al. The differential impact of risk factors on mortality in hemodialysis and peritoneal dialysis. *Kidney Int.* 2004;66:2389–2401.
38. Oliver MJ, Al-Jaishi AA, Dixon SN, et al. Hospitalization rates for patients on assisted peritoneal dialysis compared with in-center hemodialysis. *Clin J Am Soc Nephrol.* 2016;11:1606–1614.
39. van de Luijngaarden MW, Noordzij M, Stel VS, et al. Effects of comorbid and demographic factors on dialysis modality choice and related patient survival in Europe. *Nephrol Dial Transplant.* 2011;26:2940–2947.
40. Haapio M, Helve J, Kyllonen L, et al. Modality of chronic renal replacement therapy and survival—a complete cohort from Finland, 2000–2009. *Nephrol Dial Transplant.* 2013;28:3072–3081.
41. McDonald SP, Marshall MR, Johnson DW, et al. Relationship between dialysis modality and mortality. *J Am Soc Nephrol.* 2009;20:155–163.
42. Tanna MM, Vonesh EF, Korbet SM. Patient survival among incident peritoneal dialysis and hemodialysis patients in an urban setting. *Am J Kidney Dis.* 2000;36:1175–1182.
43. Trinh E, Chan CT, Perl J. Dialysis modality and survival: done to death. *Semin Dial.* 2018;31:315–324.
44. Korevaar JC, Feith GW, Dekker FW, et al. Effect of starting with hemodialysis compared with peritoneal dialysis in patients new on dialysis treatment: a randomized controlled trial. *Kidney Int.* 2003;64:2222–2228.
45. Fan L, Yang X, Chen Q, et al. Burden of kidney disease among patients with peritoneal dialysis versus conventional in-centre haemodialysis: a randomised, non-inferiority trial. *Perit Dial Int.* 2022;42:246–258.
46. McGregor DO, Buttimore AL, Lynn KL, et al. A comparative study of blood pressure control with short in-center versus long home hemodialysis. *Blood Purif.* 2001;19:293–300.
47. Nitsch D, Steenkamp R, Tomson CR, et al. Outcomes in patients on home haemodialysis in England and Wales, 1997–2005: a comparative cohort analysis. *Nephrol Dial Transplant.* 2011;26:1670–1677.
48. Krahn MD, Bremner KE, de Oliveira C, et al. Home dialysis is associated with lower costs and better survival than other modalities: a population-based study in Ontario, Canada. *Perit Dial Int.* 2019;39:553–561.
49. Weinhandl ED, Liu J, Gilbertson DT, et al. Survival in daily home hemodialysis and matched thrice-weekly in-center hemodialysis patients. *J Am Soc Nephrol.* 2012;23:895–904.

- 1563 50. Perl J, Na Y, Tennankore KK, Chan CT. Temporal trends and factors
1564 associated with home hemodialysis technique survival in Canada. *Clin J*
1565 *Am Soc Nephrol.* 2017;12:1248–1258. 1620
- 1566 51. Pauly RP, Maximova K, Coppens J, et al. Patient and technique survival
1567 among a Canadian multicenter nocturnal home hemodialysis cohort.
1568 *Clin J Am Soc Nephrol.* 2010;5:1815–1820. 1621
- 1569 52. Rocco MV, Lockridge RS Jr, Beck GJ, et al. The effects of frequent
1570 nocturnal home hemodialysis: The Frequent Hemodialysis Network
1571 Nocturnal Trial. *Kidney Int.* 2011;80:1080–1091. 1622
- 1572 53. Bonenkamp AA, van Eck van der Sluijs A, Hoekstra T, et al. Health-
1573 related quality of life in home dialysis patients compared to in-center
1574 hemodialysis patients: a systematic review and meta-analysis. *Kidney*
1575 *Med.* 2020;2:139–154. 1623
- 1576 54. Iyasere O, Brown E, Gordon F, et al. Longitudinal trends in quality of life
1577 and physical function in frail older dialysis patients: a comparison of
1578 assisted peritoneal dialysis and in-center hemodialysis. *Perit Dial Int.*
1579 2019;39:112–118. 1624
- 1580 55. Iyasere O, Brown EA, Johansson L, et al. Quality of life with conservative
1581 care compared with assisted peritoneal dialysis and haemodialysis. *Clin*
1582 *Kidney J.* 2019;12:262–268. 1625
- 1583 56. Iyasere OU, Brown EA, Johansson L, et al. Quality of life and physical
1584 function in older patients on dialysis: a comparison of assisted
1585 peritoneal dialysis with hemodialysis. *Clin J Am Soc Nephrol.* 2016;11:
1586 423–430. 1626
- 1587 57. Derrett S, Darmody M, Williams S, et al. Older peoples' satisfaction with
1588 home-based dialysis. *Nephrology.* 2010;15:464–470. 1627
- 1589 58. Manera KE, Johnson DW, Craig JC, et al. Establishing a core outcome set
1590 for peritoneal dialysis: report of the SONG-PD (Standardized Outcomes
1591 in Nephrology-Peritoneal Dialysis) Consensus Workshop. *Am J Kidney*
1592 *Dis.* 2020;75:404–412. 1628
- 1593 59. Evangelidis N, Tong A, Manns B, et al. Developing a set of core
1594 outcomes for trials in hemodialysis: an international Delphi survey. *Am J*
1595 *Kidney Dis.* 2017;70:464–475. 1629
- 1596 60. Flanagan EP, Chivate Y, Weiner DE. Home dialysis in the United States: a
1597 roadmap for increasing peritoneal dialysis utilization. *Am J Kidney Dis.*
1598 2020;75:413–416. 1630
- 1599 61. Dalrymple LS, Young EW, Farag YMK, et al. Kidney Health Initiative ESKD
1600 Data Standards Project. *Kidney Med.* 2022;4:100495. 1631
- 1601 62. Rivara MB, Edwards T, Patrick D, et al. Development and content
1602 validity of a patient-reported experience measure for home dialysis.
1603 *Clin J Am Soc Nephrol.* 2021;16:588–598. 1632
- 1604 63. Dad T, Tighiouart H, Fenton JJ, et al. Evaluation of non-response to the
1605 In-Center Hemodialysis Consumer Assessment of Healthcare Providers
1606 and Systems (ICH CAHPS) survey. *BMC Health Serv Res.* 2018;18:790. 1633
- 1607 64. Weiner D, Watnick S. The ESRD Quality Incentive Program—Can we
1608 bridge the chasm? *J Am Soc Nephrol.* 2017;28:1697–1706. 1634
- 1609 65. Reaves AC, Weiner DE. The ESRD Quality Incentive Program: Everything
1610 can be improved. *Am J Kidney Dis.* 2021;78:907–910. 1635
- 1611 66. de Jong RW, Stel VS, Rahmel A, et al. Patient-reported factors
1612 influencing the choice of their kidney replacement treatment modality.
1613 *Nephrol Dial Transplant.* 2022;37:477–488. 1636
- 1614 67. Ladin K, Pandya R, Perrone RD, et al. Characterizing approaches to
1615 dialysis decision making with older adults: a qualitative study of
1616 nephrologists. *Clin J Am Soc Nephrol.* 2018;13:1188–1196. 1637
- 1617 68. Koch-Weser S, Porteny T, Rifkin DE, et al. Patient education for kidney
1618 failure treatment: a mixed-methods study. *Am J Kidney Dis.* 2021;78:
690–699. 1638
69. Ethier I, Cho Y, Hawley C, et al. Effect of patient- and center-level
characteristics on uptake of home dialysis in Australia and New
Zealand: a multicenter registry analysis. *Nephrol Dial Transplant.*
2020;35:1938–1949. 1639
70. Castledine CI, Gilg JA, Rogers C, et al. Renal centre characteristics and
physician practice patterns associated with home dialysis use. *Nephrol*
Dial Transplant. 2013;28:2169–2180. 1640
71. Wilkie M, Barnes T. Shared hemodialysis care: increasing patient
involvement in center-based dialysis. *Clin J Am Soc Nephrol.* 2019;14:
1402–1404. 1641
72. Blake PG, Quinn RR, Oliver MJ. Peritoneal dialysis and the process of
modality selection. *Perit Dial Int.* 2013;33:233–241. 1642
73. Devoe DJ, Wong B, James MT, et al. Patient education and peritoneal
dialysis modality selection: a systematic review and meta-analysis. *Am J*
Kidney Dis. 2016;68:422–433. 1643
74. Fotheringham J, Barnes T, Dunn L, et al. A breakthrough series
collaborative to increase patient participation with hemodialysis tasks:
a stepped wedge cluster randomised controlled trial. *PLoS One.*
2021;16:e0253966. 1644
75. Figueiredo AE, Bernardini J, Bowes E, et al. A syllabus for teaching
peritoneal dialysis to patients and caregivers. *Perit Dial Int.* 2016;36:592–
605. 1645
76. Wood E. Patient-to-patient peer support in renal care: what, why and
how? *J Renal Nurs.* 2014;6:239–243. 1646
77. Green JA, Boulware LE. Patient education and support during CKD
transitions: when the possible becomes probable. *Adv Chronic Kidney*
Dis. 2016;23:231–239. 1647
78. Appleby S. Shared care, home haemodialysis and the expert patient.
J Ren Care. 2013;39(suppl 1):16–21. 1648
79. National Kidney Foundation. NKFpeers. Accessed November 10, 2021.
<https://www.kidney.org/peers> 1649
80. Rioux JP, Cheema H, Bargman JM, et al. Effect of an in-hospital chronic
kidney disease education program among patients with unplanned
urgent-start dialysis. *Clin J Am Soc Nephrol.* 2011;6:799–804. 1650
81. Hanko J, Jastrzebski J, Nieva C, et al. Dedication of a nurse to educating
suboptimal haemodialysis starts improved transition to independent
modalities of renal replacement therapy. *Nephrol Dial Transplant.*
2010;26:2302–2308. 1651
82. Moore C, Majeed-Ariss R, Jayanti A, et al. How an ordeal becomes the
norm: a qualitative exploration of experiences of self-cannulation in
male home haemodialysis patients. *Br J Health Psychol.* 2018;23:544–
560. 1652
83. Cafazzo JA, Leonard K, Easty AC, et al. Patient-perceived barriers to the
adoption of nocturnal home hemodialysis. *Clin J Am Soc Nephrol.*
2009;4:784–789. 1653
84. Pipkin M, Eggers PW, Larive B, et al. Recruitment and training for home
hemodialysis: experience and lessons from the Nocturnal Dialysis Trial.
Clin J Am Soc Nephrol. 2010;5:1614–1620. 1654
85. Crabtree JH, Shrestha BM, Chow KM, et al. Creating and maintaining
optimal peritoneal dialysis access in the adult patient: 2019 update.
Perit Dial Int. 2019;39:414–436. 1655
86. Perl J, Pierratos A, Kandasamy G, et al. Peritoneal dialysis catheter
implantation by nephrologists is associated with higher rates of
peritoneal dialysis utilization: a population-based study. *Nephrol Dial*
Transplant. 2015;30:301–309. 1656
87. Winterbottom AE, Gavaruzzi T, Mooney A, et al. Patient acceptability of
the Yorkshire Dialysis Decision Aid (YoDDA) Booklet: a prospective non-
randomized comparison study across 6 predialysis services. *Perit Dial*
Int. 2016;36:374–381. 1657
88. Ladin K, Tighiouart H, Bronzi O, et al. Effectiveness of an intervention to
improve decision making for older patients with advanced chronic
kidney disease: a randomized controlled trial. *Ann Intern Med.* 2023;176:
29–38. 1658
89. Amir N, McCarthy HJ, Tong A. A working partnership: a review of shared
decision-making in nephrology. *Nephrology (Carlton).* 2021;26:851–857. 1659
90. Funderup J, Dam Jensen J, Lomborg K. Evaluation of a shared decision-
making intervention for dialysis choice at four Danish hospitals: a
qualitative study of patient perspective. *BMJ Open.* 2019;9:e029090. 1660
91. Walker RC, Tong A, Howard K, et al. Patients' and caregivers'
expectations and experiences of remote monitoring for peritoneal
dialysis: a qualitative interview study. *Perit Dial Int.* 2020;40:540–547. 1661
92. Antoun J, Brown DJ, Jones DJW, et al. Understanding the impact of
initial COVID-19 restrictions on physical activity, wellbeing and quality
of life in shielding adults with end-stage renal disease in the United
Kingdom dialysing at home versus in-centre and their experiences with
telemedicine. *Int J Environ Res Public Health.* 2021;18:3144. 1662
93. Ewart C, Baharani J, Wilkie M, Thomas N. Patient perspectives and
experiences of remote consultations in people receiving kidney care: a
scoping review. *J Ren Care.* 2022;48:143–153. 1663
94. Cartwright EJ, Zs Goh Z, Foo M, et al. eHealth interventions to support
patients in delivering and managing peritoneal dialysis at home: a
systematic review. *Perit Dial Int.* 2021;41:32–41. 1664
95. Boyer A, Lanot A, Lambie M, et al. Trends in assisted peritoneal dialysis
over the last decade: a cohort study from the French Peritoneal Dialysis
Registry. *Clin Kidney J.* 2020;13:1003–1011. 1665
96. Bechade C, Lobbedez T, Ivarsen P, et al. Assisted peritoneal dialysis for
older people with end-stage renal disease: the French and Danish
experience. *Perit Dial Int.* 2015;35:663–666. 1666
97. Povlsen JV, Sorensen AB, Ivarsen P. Unplanned start on peritoneal
dialysis right after PD catheter implantation for older people with end-
stage renal disease. *Perit Dial Int.* 2015;35:622–624. 1667

- 1675 98. Oliver MJ, Quinn RR, Richardson EP, et al. Home care assistance and the
1676 utilization of peritoneal dialysis. *Kidney Int.* 2007;71:673–678. 1731
- 1677 99. Fonseca-Correa JI, Farragher JF, Tomlinson G, et al. Longitudinal
1678 changes in the use of PD assistance for patients maintained on
1679 peritoneal dialysis. *Kidney360.* 2021;2:469–476. 1732
- 1680 100. Bevilacqua MU, Turnbull L, Saunders S, et al. Evaluation of a 12-month
1681 pilot of long-term and temporary assisted peritoneal dialysis. *Perit Dial*
1682 *Int.* 2017;37:307–313. 1733
- 1683 101. Franco MR, Fernandes N, Ribeiro CA, et al. A Brazilian experience in
1684 assisted automated peritoneal dialysis: a reliable and effective home
1685 care approach. *Perit Dial Int.* 2013;33:252–258. 1734
- 1686 102. Xu R, Zhuo M, Yang Z, et al. Experiences with assisted peritoneal dialysis
1687 in China. *Perit Dial Int.* 2012;32:94–101. 1735
- 1688 103. Pommer W, Su X, Zhang M, et al. Implementing assisted peritoneal
1689 dialysis in renal care: a Chinese-German perspective. *Kidney Blood Press*
1690 *Res.* 2018;43:1646–1654. 1736
- 1691 104. Al Wakeel JS, Al Ghonaim MA, Aldohayan A, et al. Appraising the
1692 outcome and complications of peritoneal dialysis patients in self-
1693 care peritoneal dialysis and assisted peritoneal dialysis: a 5-year
1694 review of a single Saudi center. *Saudi J Kidney Dis Transpl.* 2018;29:
1695 71–80. 1737
- 1696 105. Oliver MJ, Garg AX, Blake PG, et al. Impact of contraindications, barriers
1697 to self-care and support on incident peritoneal dialysis utilization.
1698 *Nephrol Dial Transplant.* 2010;25:2737–2744. 1738
- 1699 106. Boyer A, Solis-Trapala I, Tabinor M, et al. Impact of the implementation
1700 of an assisted peritoneal dialysis service on peritoneal dialysis initiation.
1701 *Nephrol Dial Transplant.* 2020;35:1595–1601. 1739
- 1702 107. Brown EA, Ekstrand A, Gallieni M, et al. Availability of assisted peritoneal
1703 dialysis in Europe: call for increased and equal access. *Nephrol Dial*
1704 *Transplant.* 2022;37:2080–2089. 1740
- 1705 108. Maierean SM, Oliver MJ. Health outcomes and cost considerations of
1706 assisted peritoneal dialysis: a narrative review. *Blood Purif.* 2021;50:662–
1707 666. 1741
- 1708 109. Ng JK, Chan GC, Chow KM, et al. Helper-assisted continuous ambulatory
1709 peritoneal dialysis: Does the choice of helper matter? *Perit Dial Int.*
1710 2020;40:34–40. 1742
- 1711 110. Bamforth RJ, Beaudry A, Ferguson TW, et al. Costs of assisted home
1712 dialysis: a single-payer Canadian model from Manitoba. *Kidney Med.*
1713 2021;3:942–950.e41. 1743
- 1714 111. Hussein WF, Bennett PN, Anwaar A, et al. Implementation of a staff-
1715 assisted peritoneal dialysis program in the United States: a feasibility
1716 study. *Clin J Am Soc Nephrol.* 2022;17:703–705. 1744
- 1717 112. Hofmeister M, Klarenbach S, Soril L, et al. A systematic review and
1718 jurisdictional scan of the evidence characterizing and evaluating
1719 assisted peritoneal dialysis models. *Clin J Am Soc Nephrol.* 2020;15:511–
1720 520. 1745
- 1721 113. Gilbertson EL, Krishnasamy R, Foote C, et al. Burden of care and quality
1722 of life among caregivers for adults receiving maintenance dialysis: a
1723 systematic review. *Am J Kidney Dis.* 2019;73:332–343. 1746
- 1724 114. Silver SA, Harel Z, McQuillan R, et al. How to begin a quality
1725 improvement project. *Clin J Am Soc Nephrol.* 2016;11:893–900. 1747
- 1726 115. Marshall MR, Young BA, Fox SJ, et al. The home hemodialysis hub:
1727 physical infrastructure and integrated governance structure. *Hemodial*
1728 *Int.* 2015;19(suppl 1):S8–S22. 1748
- 1729 116. Quinn RR, Mohamed F, Pauly R, et al. Starting dialysis on time, at home
1730 on the right therapy (START): description of an intervention to increase
the safe and effective use of peritoneal dialysis. *Can J Kidney Health Dis.*
2021;8:20543581211003764. 1749
- 1731 117. Manns BJ, Garg AX, Sood MM, et al. Multifaceted intervention to
1732 increase the use of home dialysis: a cluster randomized controlled trial.
1733 *Clin J Am Soc Nephrol.* 2022;17:535–545. 1750
- 1734 118. Vest JR, Gamm LD. A critical review of the research literature on Six
1735 Sigma, Lean and StuderGroup's Hardwiring Excellence in the United
1736 States: the need to demonstrate and communicate the effectiveness of
1737 transformation strategies in healthcare. *Implement Sci.* 2009;4:35. 1751
- 1738 119. Pieper D, Mathes T, Marshall MR. A systematic review of the impact of
1739 center volume in dialysis. *BMC Res Notes.* 2015;8:812. 1752
- 1740 120. Glickman JD, Seshasai RK. Home hemodialysis education during
1741 postdoctoral training: challenges and innovations. *Semin Dial.* 2018;31:
1742 111–114. 1753
- 1743 121. Shen JI, Schreiber MJ, Zhao J, et al. Attitudes toward peritoneal dialysis
1744 among peritoneal dialysis and hemodialysis medical directors: Are We
1745 Preaching to the Right Choir? *Clin J Am Soc Nephrol.* 2019;14:1067–
1746 1070. 1754
- 1747 122. McGill RL, Weiner DE, Ruthazer R, et al. Transfers to hemodialysis among
1748 US patients initiating renal replacement therapy with peritoneal
1749 dialysis. *Am J Kidney Dis.* 2019;74:620–628. 1755
- 1750 123. Chan C, Combes G, Davies S, et al. Transition between different renal
1751 replacement modalities: gaps in knowledge and care—The Integrated
1752 Research Initiative. *Perit Dial Int.* 2019;39:4–12. 1756
- 1753 124. Robinson BM, Akizawa T, Jager KJ, et al. Factors affecting outcomes in
1754 patients reaching end-stage kidney disease worldwide: differences in
1755 access to renal replacement therapy, modality use, and haemodialysis
1756 practices. *Lancet.* 2016;388:294–306. 1757
- 1757 125. Mitra S, Cress C, Goovaerts T. Workforce development and models of
1758 care in home dialysis. *Hemodial Int.* 2015;19(suppl 1):543–551. 1758
- 1759 126. Howard K, McFarlane PA, Marshall MR, et al. Funding and planning:
1760 what you need to know for starting or expanding a home hemodialysis
1761 program. *Hemodial Int.* 2015;19(suppl 1):523–542. 1759
- 1762 127. Elbokl MA, Kennedy C, Bargman JM, et al. Home-to-home dialysis
1763 transition: a 24-year single-centre experience. *Perit Dial Int.* 2022;42:
1764 324–327. 1760
- 1765 128. Cinà DP, Dacouris N, Kashani M, et al. Use of home hemodialysis after
1766 peritoneal dialysis technique failure. *Perit Dial Int.* 2013;33:96–99. 1761
- 1767 129. Nadeau-Fredette A-C, Bargman JM, Chan CT. Clinical outcome of home
1768 hemodialysis in patients with previous peritoneal dialysis exposure:
1769 evaluation of the integrated home dialysis model. *Perit Dial Int.* 2015;35:
1770 316–323. 1762
- 1771 130. Nadim MK, Forni LG, Mehta RL, et al. COVID-19-associated acute kidney
1772 injury: consensus report of the 25th Acute Disease Quality Initiative
1773 (ADQI) Workgroup. *Nat Rev Nephrol.* 2020;16:747–764. 1763
- 1774 131. Hsu CM, Weiner DE, Awah G, et al. Epidemiology and outcomes of
1775 COVID-19 in home dialysis patients compared with in-center dialysis
1776 patients. *J Am Soc Nephrol.* 2021;32:1569–1573. 1764
- 1777 132. Perl J, Thomas D, Tang Y, et al. COVID-19 among adults receiving home
1778 versus in-center dialysis. *CJASN.* 2021;16:1410–1412. 1765
- 1779 133. Poinen K, Er L, Copland MA, et al. Quantifying missed opportunities for
1780 recruitment to home dialysis therapies. *Can J Kidney Health Dis.* 2021;8:
1781 2054358121993250. 1766
- 1782 134. Albakr R, Bieber B, Aylward R, et al. An ISN-DOPPS survey of the global
1783 impact of the COVID-19 pandemic on peritoneal dialysis services.
1784 *Kidney Int Rep.* 2022;7:2196–2206. 1767
- 1785 135. Oliver MJ, Crabtree JH. Prioritizing peritoneal catheter placement
1786 during the COVID-19 pandemic: a perspective of the American Society
of Nephrology COVID-19 Home Dialysis Subcommittee. *Clin J Am Soc*
Nephrol. 2021;16:1281–1283. 1768