

# Does repeated influenza vaccination attenuate effectiveness? A systematic review and meta-analysis



Elenor Jones-Gray\*, Elizabeth J Robinson\*, Adam J Kucharski, Annette Fox, Sheena G Sullivan



## Summary

**Background** Influenza vaccines require annual readministration; however, several reports have suggested that repeated vaccination might attenuate the vaccine's effectiveness. We aimed to estimate the reduction in vaccine effectiveness associated with repeated influenza vaccination.

**Methods** In this systematic review and meta-analysis, we searched MEDLINE, EMBASE, and CINAHL Complete databases for articles published from Jan 1, 2016, to June 13, 2022, and Web of Science for studies published from database inception to June 13, 2022. For studies published before Jan 1, 2016, we consulted published systematic reviews. Two reviewers (EJ-G and EJR) independently screened, extracted data using a data collection form, assessed studies' risk of bias using the Risk Of Bias In Non-Randomized Studies of Interventions (ROBINS-I) and evaluated the weight of evidence by Grading of Recommendations Assessment, Development, and Evaluation (GRADE). We included observational studies and randomised controlled trials that reported vaccine effectiveness against influenza A(H1N1)pdm09, influenza A(H3N2), or influenza B using four vaccination groups: current season; previous season; current and previous seasons; and neither season (reference). For each study, we calculated the absolute difference in vaccine effectiveness ( $\Delta$ VE) for current season only and previous season only versus current and previous season vaccination to estimate attenuation associated with repeated vaccination. Pooled vaccine effectiveness and  $\Delta$ VE were calculated by season, age group, and overall. This study is registered with PROSPERO, CRD42021260242.

**Findings** We identified 4979 publications, selected 681 for full review, and included 83 in the systematic review and 41 in meta-analyses.  $\Delta$ VE for vaccination in both seasons compared with the current season was  $-9\%$  (95% CI  $-16$  to  $-1$ ,  $I^2=0\%$ ; low certainty) for influenza A(H1N1)pdm09,  $-18\%$  ( $-26$  to  $-11$ ,  $I^2=7\%$ ; low certainty) for influenza A(H3N2), and  $-7\%$  ( $-14$  to  $0$ ,  $I^2=0\%$ ; low certainty) for influenza B, indicating lower protection with consecutive vaccination. However, for all types, A subtypes and B lineages, vaccination in both seasons afforded better protection than not being vaccinated.

**Interpretation** Our estimates suggest that, although vaccination in the previous year attenuates vaccine effectiveness, vaccination in two consecutive years provides better protection than does no vaccination. The estimated effects of vaccination in the previous year are concerning and warrant additional investigation, but are not consistent or severe enough to support an alternative vaccination regimen at this time.

**Funding** WHO and the US National Institutes of Health.

**Copyright** © 2022 The Author(s). Published by Elsevier Ltd. This is an Open Access article under the CC BY 4.0 license.

## Introduction

Influenza vaccines require annual readministration because circulating viruses, especially influenza A(H3N2) viruses,<sup>1</sup> undergo rapid antigenic drift demanding reconfiguration of the vaccine and because vaccine-induced immunity against homologous strains might wane.<sup>2,3</sup> Annual seasonal influenza vaccination is currently recommended in some countries.<sup>4</sup> However, vaccine effectiveness might attenuate with repeated administration.<sup>5</sup>

The first study to report reduced vaccine effectiveness in repeat vaccinees came from a 1970s vaccine trial in an English boarding school, which observed that infection rates were higher for boys vaccinated in the current and previous season than for boys receiving their first vaccination.<sup>5</sup> A 1999 review of ensuing immunological studies identified that roughly half of published

serological studies reported reduced post-vaccination antibody titres against A(H3N2) in people who had received multiple influenza vaccinations compared with those who had received a single influenza vaccination.<sup>6</sup> Several subsequent studies have shown diminishing post-vaccination antibody responses<sup>7–11</sup> and diminishing vaccine effectiveness<sup>12–19</sup> as the number of previous vaccines an individual has been given increases.

These findings indicate that the capacity of vaccination to update immunity against new influenza viruses might be limited by pre-existing immunity.<sup>11</sup> Hoskins and colleagues<sup>20</sup> proposed that, by preventing infection-acquired immunity, vaccination increases the risk of infection by an antigenically drifted strain. However, the effects of previous vaccination vary among studies<sup>21</sup> and seasons,<sup>22,23</sup> leading to speculation that the effects of pre-existing immunity might depend on the degree of

*Lancet Respir Med* 2022; 11: 27–44

Published Online  
September 21, 2022  
[https://doi.org/10.1016/S2213-2600\(22\)00266-1](https://doi.org/10.1016/S2213-2600(22)00266-1)

See [Comment](#) page 2

\*Contributed equally

Department of Infectious Diseases, University of Melbourne (E Jones-Gray MPH, E J Robinson MPH, A Fox PhD, S G Sullivan PhD), and WHO Collaborating Centre for Reference and Research on Influenza, Royal Melbourne Hospital (A Fox, S G Sullivan), Peter Doherty Institute for Infection and Immunity, Melbourne, VIC, Australia; Department of Epidemiology, University of California, Los Angeles, CA, USA (S G Sullivan); Centre for the Mathematical Modelling of Infectious Diseases (CMMID), London School of Hygiene and Tropical Medicine, London, UK (Prof A J Kucharski PhD)

Correspondence to:  
Dr Sheena Sullivan, WHO Collaborating Centre for Reference and Research on Influenza, Royal Melbourne Hospital, Peter Doherty Institute for Infection and Immunity, Melbourne, VIC 3000, Australia  
[sheena.sullivan@influenzacentre.org](mailto:sheena.sullivan@influenzacentre.org)

### Research in context

#### Evidence before this study

We searched MEDLINE, Web of Science, CINAHL Complete, and EMBASE with the terms “influenza”, “vaccines”, “immunization”, “efficacy”, and “effectiveness” without language restriction from database inception to June 13, 2022, and the reference lists of previous systematic reviews on repeat influenza vaccine effectiveness. Studies of any design were included if they investigated the vaccine effectiveness of influenza vaccination in consecutive seasons. Two previous related meta-analyses have summarised influenza A subtypes and influenza B with minimal subgroup analysis and quality appraisal. Our literature search revealed substantially more articles for inclusion since these reviews were published.

#### Added value of this study

We identified 83 observational studies from 30 countries; 41 studies were included in meta-analysis with the earliest season estimates from 2007–08. Our meta-analysis provides up-to-date summary vaccine effectiveness estimates for influenza vaccination in two consecutive seasons for policy planning consideration. We included a critical appraisal of the body of evidence by providing a risk-of-bias assessment for studies included in the meta-analysis. Our protocol is available on Prospero for those wishing to repeat our process. We estimated that vaccine effectiveness against influenza A(H1N1)pdm09 and

the influenza B viruses for people vaccinated in both the current and previous seasons were, on average, slightly attenuated compared with effectiveness in people vaccinated in the current season only. Vaccine effectiveness against influenza A(H3N2) was worse overall than for influenza B and displayed a greater loss in effectiveness with repeated vaccination. However, on average, vaccination in both the current and previous seasons afforded better protection than not being vaccinated in either season or vaccination in the previous season only for all types, A subtypes and B lineages examined.

#### Implications of all the available evidence

Annual seasonal influenza vaccination is currently recommended in several countries. Our study contributes to the growing body of evidence on repeated influenza vaccination. We used the Grading of Recommendations Assessment, Development, and Evaluation (GRADE) approach to assess the certainty of the body of evidence by type, A subtype and B lineage, which was low for influenza A(H1N1)pdm09 and influenza B, and very low for influenza A(H3N2). The currently available evidence does not warrant a change to policies that recommend annual vaccination. Our results support current season vaccination regardless of previous season vaccination and suggest that vaccination in any combination of current and previous seasons provided better protection than not being vaccinated.

antigenic change between successively encountered strains. The antigenic distance hypothesis is a possible explanation for this phenomenon, including inconsistencies among studies.<sup>24</sup> The hypothesis posits that, when two vaccine strains are antigenically similar, responses to epitopes in the first vaccine strain dominate, such that repeat vaccination impairs vaccine effectiveness if the circulating strain has changed from the second vaccine strain but enhances vaccine effectiveness if the circulating strain has not changed. In contrast, if the first and second vaccine strains are antigenically distant, repeat vaccination has little effect because responses to the second vaccine strain are not compromised.<sup>16,19</sup> These effects are not expected each year because of annual differences in the first and second vaccine strains and in the antigenic distance between the second vaccine strain and the circulating strain. However, these effects are seen more often for influenza A(H3N2) viruses,<sup>21</sup> probably because of higher rates of antigenic drift.<sup>25</sup>

Concepts regarding the underlying immunological mechanisms have evolved over many years. The initial concept of original antigenic sin suggests that a person's first influenza infection preferentially orients antibodies towards priming epitopes that remain in subsequent strains, often as subdominant epitopes.<sup>26</sup> Furthermore, the concept of antigenic seniority suggests previous infections have cumulative negative effects on responses to later strains, resulting in higher antibody titres to strains encountered earlier in life.<sup>17</sup> Immune boosting

and interference might account for these concepts, with successive influenza exposures boosting antibody responses to more senior strains that dominate over responses to new epitopes, suggesting that memory responses are invoked.<sup>27,28</sup> Indeed, studies have shown preferential focusing of antibodies on a conserved epitope among successively encountered strains.<sup>29,30</sup> Consequently, a future opportunity cost might be created if conserved epitopes are subsequently altered in circulating strains.<sup>31</sup> Thus, antibody focusing might be linked to antigenic drift and the antigenic distance hypothesis;<sup>24</sup> for example, a series of similar vaccines containing a shared epitope might promote antibody focusing that would provide little protection if the circulating strain drifts, thereby reducing vaccine effectiveness.

Since many people vaccinated in any one season tend to be vaccinated in every season, any loss in effectiveness presents an important policy consideration since it will affect the majority of those vaccinated. To investigate whether vaccine effectiveness is reduced by repeated vaccination, we did a systematic review and meta-analysis of studies reporting vaccine effectiveness by the previous year's vaccination status.

## Methods

### Search strategy and selection criteria

We followed PRISMA guidelines (appendix pp 2–4) throughout this systematic review and meta-analysis. We

See Online for appendix

searched MEDLINE, EMBASE, and CINAHL Complete databases for articles published from Jan 1, 2016, to June 13, 2022, and Web of Science for studies published in English from database inception to June 13, 2022. We also searched reference lists of reviews,<sup>32,33</sup> and we searched MEDLINE, EMBASE, and CINAHL Complete databases for non-English language studies published up to Dec 31, 2015. Search terms included variations of “influenza”, “vaccines”, “immunization”, “efficacy” and “effectiveness” (appendix p 5). We searched reference lists of eligible studies for additional inclusions and we contacted experts and asked whether they had any unpublished papers.

We included observational studies and randomised controlled trials that reported vaccine effectiveness against laboratory-confirmed influenza for four comparison groups: current season only, previous season only, current and previous seasons, and neither season (reference group). For studies not in English, we required an English language abstract.

Two reviewers (EJ-G and EJR) independently conducted screening, data extraction, and risk of bias analyses. Titles and abstracts were initially screened, followed by full-text screening according to predefined exclusion and inclusion criteria using Covidence. Conflicts between reviewers were resolved via consensus or consultation with a third reviewer (SGS). Non-English language studies were evaluated by individuals fluent in the relevant language.

### Data analysis

We extracted data using a standardised form after the removal of duplicates (appendix pp 6–7). Extracted data included study and patient characteristics, as well as vaccine effectiveness or odds ratio (OR; 95% CI) estimates for individual seasons by age group and influenza virus type. We contacted authors of publications that did not provide the numerical values required for meta-analysis. We preferentially recorded adjusted, rather than crude, estimates. If the publication reanalysed already published data, we extracted the most recent published estimate.

We assessed study quality using Risk of Bias in Non-Randomized Studies of Interventions (ROBINS-I).<sup>34</sup> We graded the certainty of evidence presented in the meta-analysis using the Grading of Recommendations Assessment, Development, and Evaluation (GRADE) approach.<sup>35</sup>

The absolute difference in vaccine effectiveness ( $\Delta VE$ ) for people who were vaccinated in the current and previous ( $VE_{CP}$ ) seasons and those vaccinated in the current season only ( $VE_C$ ) was calculated as:  $\Delta VE = VE_{CP} - VE_C$ .  $\Delta VE > 0$  implies higher vaccine effectiveness if vaccinated in the current and previous seasons than in the current season alone. We calculated CIs for  $\Delta VE$  by bootstrapping 1000 samples for  $VE_C$  and  $VE_{CP}$  (appendix pp 8–9).<sup>36</sup> The absolute difference in vaccine effectiveness for people vaccinated in the current and previous season against the previous season only  $\Delta VE_p$ ,

was also calculated. This relationship might be less biased by confounding<sup>37</sup> and might be more relevant to frequent vaccinees<sup>32</sup> because it considers potential residual effects of vaccination in the preceding season.<sup>38</sup>

For the meta-analysis, we estimated pooled vaccine effectiveness with 95% CIs for influenza A(H1N1)pdm09, influenza A(H3N2), and influenza B by season and age group for each vaccination group (ie, current season only, previous season only, current and previous seasons). If studies did not report estimates for all four comparison groups, we used all available estimates. We did not incorporate studies with estimates or 95% CI values equal to 100% vaccine effectiveness.

The primary analysis for each type, A subtype or B lineage used vaccine effectiveness estimates for the broadest age group (eg, all ages or  $\geq 9$  years). Estimates from studies that only reported vaccine effectiveness for a particular age group (eg, children) were only included in age group estimates. Southern hemisphere estimates were grouped with northern hemisphere estimates with the same vaccine formulation. Inpatient and outpatient studies were pooled, as these have been found to be broadly consistent.<sup>36</sup> We did age subgroup analyses considering three age groups: children, adults, and older adults (as defined in each study). For influenza B, we calculated separate pooled estimates for the infecting lineage and also calculated separate pooled estimates for the lineage included in trivalent influenza vaccines. We evaluated statistical heterogeneity using Cochran's Q and the  $I^2$  statistic. In addition, we calculated both random-effects and fixed-effect models as discrepancies could indicate instability in the pooled estimates.<sup>39</sup> Publication bias was investigated by funnel plots and formally tested using Egger's test, in which at least ten estimates were available.<sup>40,41</sup>

We did several sensitivity analyses to assess the robustness of pooled estimates to study design: inclusion of studies using non-PCR diagnostics tests; restriction of data to the northern hemisphere; restriction of data to outpatient studies; restriction of data to test-negative studies; and exclusion of studies with serious, critical, or no information risk of bias assessed by ROBINS-I.

All analyses were done in R (version 3.6.1) using the package metafor for meta-analyses and the robvis package for risk of bias visualisations.

This systematic review and meta-analysis was pre-registered on PROSPERO (CRD42021260242).

### Role of the funding source

The WHO SAGE Working Group on Influenza defined the scope of the review and provided feedback on the final report. The US National Institutes of Health had no role in study design, data collection, analysis, or interpretation.

### Results

We identified 4979 unduplicated publications and selected 681 for full-text review. 83 publications met the

For the protocol see [https://www.crd.york.ac.uk/PROSPERO/display\\_record.php?RecordID=260242](https://www.crd.york.ac.uk/PROSPERO/display_record.php?RecordID=260242)

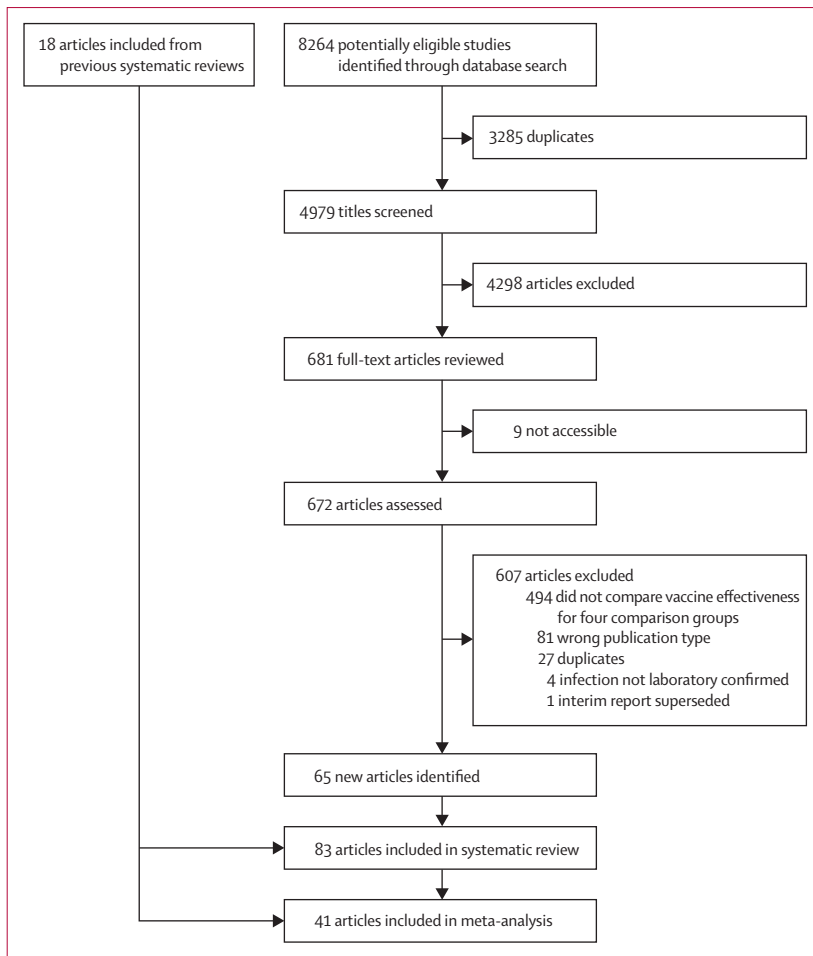


Figure 1: Study selection

eligibility criteria (appendix pp 10–14; figure 1). The characteristics of the 83 studies are presented in table 1 and the appendix (pp 15–39). All included studies were observational, including five cohort studies, six case-control studies, and 72 test-negative studies. Most were done in Europe and North America. The earliest eligible study was published Feb 17, 2011, and the earliest season was 2007–08.

Influenza infection was identified by RT-PCR in 79 (95%) studies and by a rapid diagnostic test in four (5%) studies.<sup>89,95–97</sup> 43 (51%) of 83 studies were done in outpatient settings, 19 (23%) in inpatient settings,<sup>42,43,45,46,52–55,60,71,76,77,84,85,87,91–94</sup> 13 (16%) in outpatient and inpatient settings,<sup>44,47–51,66,68,70,80,89,106</sup> and eight (10%) in community settings.<sup>8,79,88,105,107,108,111,113</sup>

Influenza vaccination was confirmed by medical record or registry in 41 (49%) studies,<sup>13,22,42–51,54,57,58,60,66–74,76,78–81,84,89,95–98,106,109–113</sup> by self-report in 13 (17%),<sup>14–18,59,63,65,99–101,103,104</sup> a mixture of medical record or registry and self-report in 26 (31%),<sup>15–18,44,56,58,61,63,64,74,76,77,82,83,86,90,99–104,109,115</sup> and the method of confirmation was not specified in three (4.8%).<sup>53,62,94</sup> Patients were classified as vaccinated if they were

vaccinated at least 14 days before symptom onset in all studies. Trivalent inactivated vaccines were used in 50 (60%) of 83 studies; however, many studies did not provide information about the specific type of vaccines administered or available.

Among the 83 studies included in the systematic review, 20 (24%) studies provided a total of 27 vaccine effectiveness estimates against generalised influenza for one previous season.<sup>15–18,41,43–45,47,51,54,57,58,63,65,66,75,76,78–90,99,100,108,109</sup> 14 estimates<sup>15,66,67,78,86,95–98,105,111</sup> showed better vaccine effectiveness for vaccination in the current season only, 12<sup>15,64,68,72,84,87,97,98,104,108,112</sup> favoured vaccinations in the current and previous seasons, and one<sup>42</sup> favoured the previous season only.

Four (5%) of 83 studies<sup>45,46,60,71</sup> compared vaccine effectiveness for various severe outcomes: intensive care unit admission,<sup>45,46,60</sup> death in hospital<sup>60</sup> or within 30 days of admission,<sup>45,46</sup> influenza-associated severe acute respiratory infection,<sup>60</sup> and hospitalisation of people with diabetes.<sup>71</sup> The majority of estimates indicated a large increase in vaccine effectiveness for people vaccinated in the current and previous seasons compared with those vaccinated in the current season only.

Ten (12%) of 83 studies<sup>16–18,48,74–76,88,93,94</sup> provided vaccine effectiveness estimates with a history covering two or more previous seasons, seven of which<sup>16–18,48,74,88,94</sup> provided 15 estimates for one and two previous vaccinations (appendix p 40). Overall, there appeared to be improved vaccine effectiveness for people vaccinated in the current and one previous season and decreased vaccine effectiveness for those vaccinated in the current and two previous seasons, with 12 (80%) of 15 estimates showing lower VE point estimates in the group vaccinated in two prior seasons. However, results were inconsistent, and increased vaccine effectiveness with an increased number of previous vaccinations was observed for three (20%) of 15 estimates, even for influenza A(H3N2). Multiple previous season vaccine effectiveness was also studied across three,<sup>46,51,70,74,96</sup> four,<sup>49,58</sup> five,<sup>22,50,66,70,71,80</sup> six,<sup>69</sup> and ten previous seasons.<sup>66</sup> Generally, we identified no consensus trend of vaccine effectiveness with increasing vaccinations in previous seasons.

Two (2%) of 83 studies<sup>95,96</sup> reported vaccine effectiveness among patients with and without medically-attended influenza A infection in the previous season. In one study, vaccine effectiveness for the groups vaccinated in the current season and both the current and previous seasons was higher for the group with documented influenza A in the previous season compared with the group with no documented influenza A infection in the previous season.<sup>95</sup> The other study conducted a sensitivity analysis comparing their main findings with estimates obtained when the sample was restricted to patients with no documented influenza infection in the previous season. They observed a drop in vaccine effectiveness for the group vaccinated in the current and one previous season when the analysis was restricted to

	Country	Design	Setting	Age range	Influenza virus type	Current season studied	Number of years previous vaccination
Boddington et al (2019) <sup>42</sup>	England	Test negative	Inpatient	2–16 years	Any	2015–16	1
Buchan et al (2017) <sup>43</sup>	Canada	Test negative	Inpatient	6–59 months	A(H1N1)pdm09, A(H3N2), and B	2010–11 to 2013–14	1
Buchan et al (2018) <sup>44</sup>	Canada	Test negative	Inpatient and outpatient	2–17 years	A(H1N1)pdm09, A(H3N2), and B	2012–13, 2013–14, 2014–15, and 2015–16	1
Casado et al (2016) <sup>45</sup>	Spain	Test negative	Inpatient	≥65 years	Any	2013–2014	1
Casado et al (2018) <sup>46</sup>	Spain	Case control	Inpatient	≥65 years	Any	2013–2014 and 2014–15	3
Castilla et al (2011) <sup>47</sup>	Spain	Nested case control	Inpatient and outpatient	All ages	Any	2010–11	1
Castilla et al (2016) <sup>48</sup>	Spain	Test negative	Inpatient and outpatient	≥6 months	A(H3N2) and B	2014–15	2
Castilla et al (2017) <sup>49</sup>	Spain	Test negative	Inpatient and outpatient	≥9 years	A(H3N2)	2016–17	4
Castilla et al (2018) <sup>50</sup>	Spain	Test negative	Inpatient and outpatient	≥9 years	A(H3N2) and B	2017–18	5
Castilla et al (2018) <sup>50</sup>	Spain	Test negative	Inpatient and outpatient	≥9 years	Any	2017–18	5
Castilla et al (2020) <sup>51</sup>	Spain	Test negative	Inpatient and outpatient	≥9 years	Any	2018–19	3
Cheng et al (2017) <sup>52</sup>	Australia	Test negative	Inpatient	>9 years	A(H1N1)pdm09, A(H3N2), and B	2011–15	1
Dominguez et al (2017) <sup>53</sup>	Spain	Case control	Inpatient	≥65 years	Any	2014–15	1
El Omeiri et al* (2018) <sup>54</sup>	Latin America	Test negative	Inpatient	≥60 years	A(H1N1)pdm09 and any	2013	1
Ferdinands et al (2019) <sup>55</sup>	USA	Test negative	Inpatient	≥18 years	Any	2015–16	1
Flannery et al (2019) <sup>56</sup>	USA	Test negative	Outpatient	≥9 years	A(H3N2) and B	2016–17	1
Fu et al† (2015) <sup>57</sup>	China	Case control	Outpatient	3–6 years	A(H1N1)pdm09	2012–13	1
Gaglani et al* (2016) <sup>58</sup>	USA	Test negative	Outpatient	≥50 years, 18–49 years, and 9–17 years	A(H1N1)pdm09	2013–14	1
Gaglani et al* (2016) <sup>58</sup>	USA	Test negative	Outpatient	≥9 years	A(H1N1)pdm09	2013–14	1 and 4
Gherasim et al† (2017) <sup>59</sup>	Spain	Test negative	Outpatient	≥9 years	A(H1N1)pdm09	2010–11, 2013–14, and 2015–16	1
Gherasim et al† (2017) <sup>59</sup>	Spain	Test negative	Outpatient	≥9 years	A(H3N2)	2011–12, 2013–14, and 2014–15	1
Gherasim et al† (2017) <sup>59</sup>	Spain	Test negative	Outpatient	≥9 years	B	2010–11, 2012–13, 2014–15, and 2015–16	1
Grijalva et al (2021) <sup>60</sup>	USA	Test negative	Inpatient	≥18 years	Any	2019–20	1
Jackson et al* (2017) <sup>61</sup>	USA	Test negative	Outpatient	≥9 years	A(H1N1)pdm09, and B/Victoria, and B/Yamagata	2015–16	1
Jiménez-Jorge et al (2012) <sup>62</sup>	Spain	Test negative	Outpatient	0–95 years	A(H1N1)pdm09	2010–11	1
Kim et al* (2021) <sup>38</sup>	USA	Test negative	Outpatient	≥9 years	A(H1N1)pdm09	2013–14 and 2015–16	1
Kim et al* (2021) <sup>38</sup>	USA	Test negative	Outpatient	≥9 years	A(H3N2)	2012–13, 2014–15, 2016–17, and 2017–18	1
Kim et al* (2021) <sup>38</sup>	USA	Test negative	Outpatient	≥9 years	B	2012–13, 2014–15, 2015–16, 2016–17, and 2017–18	1
Kissling et al* (2018) <sup>63</sup>	Europe	Test negative	Outpatient	≥9 years	A(H1N1)pdm09	2015–16	1
Kissling et al* (2018) <sup>63</sup>	Europe	Test negative	Outpatient	15–64 years	B	2015–16	1
Kissling et al* (2019) <sup>64</sup>	Europe	Test negative	Outpatient	≥9 years	A(H3N2)	2018–19	1
Kissling et al* (2019) <sup>65</sup>	Europe	Test negative	Outpatient	≥9 years	A(H1N1)pdm09	2017–18	1
Kissling et al* (2019) <sup>65</sup>	Europe	Test negative	Outpatient	≥9 years	A(H3N2)	2016–17 and 2017–18	1
Kwong et al (2020) <sup>66</sup>	Canada	Test negative	Inpatient and outpatient	>65 years	Any	2010–11 to 2015–16	1

(Table 1 continues on next page)

	Country	Design	Setting	Age range	Influenza virus type	Current season studied	Number of years previous vaccination
(Continued from previous page)							
Kwong et al (2020) <sup>66</sup>	Canada	Test negative	Inpatient and outpatient	≥70 years	Any	2010–11 to 2015–16	5
Kwong et al (2020) <sup>66</sup>	Canada	Test negative	Inpatient and outpatient	≥75 years	Any	2010–11 to 2015–16	10
Ma et al (2017) <sup>67</sup>	China	Test negative	Outpatient	≥6 months	Any	2014–15	1
Martinez-Baz et al (2013) <sup>68</sup>	Spain	Test negative	Inpatient and outpatient	≥6 months	A(H1N1)pdm09	2010–11	1
Martinez-Baz et al (2017) <sup>69</sup>	Spain	Test negative	Inpatient and outpatient	≥6 months	A(H1N1)pdm09	2010–11, 2012–13, 2013–14, and 2015–16	1
Martinez-Baz et al (2017) <sup>69</sup>	Spain	Test negative	Inpatient and outpatient	≥9 months	A(H1N1)pdm09	2010–11, 2012–13, 2013–14, and 2015–16	1–6
Martinez-Baz et al (2021) <sup>70</sup>	Spain	Test negative	Inpatient, and outpatient	≥9 years	A(H1N1)pdm09	2012–13, 2013–14, 2015–16, 2017–18, and 2018–19	1, 3, and 5
Martinez-Baz et al (2021) <sup>70</sup>	Spain	Test negative	Inpatient	≥9 years	A(H3N2)	2011–12, 2013–14, 2014–15, 2016–17, 2017–18, and 2018–19	1, 3, and 5
Martinez-Baz et al (2021) <sup>70</sup>	Spain	Test negative	Outpatient	≥9 years	A(H3N2)	2011–12, 2013–14, 2014–15, 2015–16, 2016–17, 2017–18, and 2018–19	1, 3, and 5
Martinez-Baz et al (2021) <sup>70</sup>	Spain	Test negative	Inpatient and outpatient	≥9 years	B	2011–12, 2012–13, 2014–15, 2015–16, and 2017–18	1, 3, and 5
Martinez-Baz et al (2021) <sup>71</sup>	Spain	Test negative	Inpatient	9–64 years	Any	2013–14 to 2018–19	1 and 5
Martinez-Baz et al (2021) <sup>72</sup>	Spain	Test negative	Inpatient	≥64 years	Any	2013–14 to 2018–19	1 and 5
McLean et al* (2014) <sup>22</sup>	USA	Test negative	Outpatient	≥9 years	A(H3N2)	2004–05 to 2007–08 and 2010–11 to 2012–13	5
McLean et al* (2014) <sup>22</sup>	USA	Test negative	Outpatient	≥9 years	A(H3N2)	2004–05 to 2007–08, 2010–11 to 2012–13, 2007–08, and 2012–13	1
McLean et al* (2014) <sup>22</sup>	USA	Test negative	Outpatient	≥9 years	B	2004–05 to 2008–09 and 2010–11 to 2012–13	1 and 5
McLean et al* (2015) <sup>72</sup>	USA	Test negative	Outpatient	≥9 years	A(H3N2), B/Yamagata	2012–13	1
McLean et al* (2017) <sup>73</sup>	USA	Test negative	Outpatient	2–17 years	A(H3N2)	2014–15	1
McLean et al† (2018) <sup>24</sup>	USA	Test negative	Outpatient	2–17 years	A(H1N1)pdm09	2013–14 and 2015–16	1, 2, and 3
McLean et al† (2018) <sup>24</sup>	USA	Test negative	Outpatient	2–17 years	A(H3N2)	2014–15	1, 2, and 3
McLean et al† (2018) <sup>24</sup>	USA	Test negative	Outpatient	2–17 years	B/Victoria	2014–15 and 2015–16	1
McLean et al† (2018) <sup>24</sup>	USA	Test negative	Outpatient	2–17 years	B/Yamagata	2013–14, 2014–15, and 2015–16	1
McLean et al† (2018) <sup>24</sup>	USA	Test negative	Outpatient	2–17 years	B	2013–14, 2014–15, and 2015–16	1, 2, and 3
Mira-Iglesias et al (2018) <sup>75</sup>	Spain	Test negative	Inpatient	≥60 years	Any	2016–17	2
Mira-Iglesias et al (2019) <sup>76</sup>	Spain	Test negative	Inpatient	≥60 years	A(H1N1)pdm09, A(H3N2), and B/Yamagata	2017–18	2
Nichols et al† (2019) <sup>77</sup>	Canada	Test negative	Inpatient	≥16 years	A(H1N1)pdm09	2011–2012, 2012–13, and 2013–14	1
Nichols et al† (2019) <sup>77</sup>	Canada	Test negative	Inpatient	≥16 years	A(H3N2) and B	2011–12, 2012–13, 2013–14, and 2014–15	1
Ohmit et al* (2014) <sup>13</sup>	USA	Test negative	Outpatient	≥9 years	A(H3N2)	2011–12	1
Ohmit et al (2015) <sup>78</sup>	USA	Prospective cohort	Community	≥9 years	Any	2012–13	1
Ohmit et al† (2016) <sup>79</sup>	USA	Prospective cohort	Community	<9 years and ≥9 years	A(H1N1)pdm09	2013–14	1
Ortqvist et al (2018) <sup>80</sup>	Sweden	Retrospective cohort	Inpatient and outpatient	≥66 years	Any	2015–16 and 2016–17	1

(Table 1 continues on next page)

	Country	Design	Setting	Age range	Influenza virus type	Current season studied	Number of years previous vaccination
(Continued from previous page)							
Ortqvist et al (2018) <sup>90</sup>	Sweden	Retrospective cohort	Inpatient and outpatient	≥70 years	Any	2015–16 and 2016–17	4 and 5
Pebody et al* (2013) <sup>91</sup>	UK	Test negative	Outpatient	All	A(H1N1)pdm09 and B	2010–11	1
Pebody et al† (2017) <sup>92</sup>	UK	Test negative	Outpatient	≥18 years and 2–17 years	A(H3N2)	2016–17	1
Pebody et al* (2019) <sup>93</sup>	UK	Test negative	Outpatient	≥18 years and 2–17 years	A(H3N2), B	2017–18	1
Pebody et al* (2020) <sup>94</sup>	England	Test negative	Inpatient	2–17 years	A(H1N1)pdm09 and A(H1N1)	2018–19	1
Pebody et al* (2020) <sup>95</sup>	England	Test negative	Inpatient	≥65 years	A(H1N1)pdm09 and A(H1N1)	2018–19	1
Pebody et al (2020) <sup>96</sup>	UK	Test negative	Outpatient	All ages	Any	2018–19	1
Petrie et al* (2016) <sup>97</sup>	USA	Test negative	Inpatient	≥18 years	A(H3N2)	2014–15	1
Petrie et al* (2017) <sup>98</sup>	USA	Prospective cohort	Community	≥9 years and 3–8 years	A(H3N2) and B/ Yamagata	2014–15	1 and 2
Powell et al (2020) <sup>99</sup>	USA	Test negative	Inpatient and outpatient	6 months to 18 years	Any	2017–18	1
Rao et al (2021) <sup>90</sup>	USA	Test negative	Outpatient	6 months to 8 years	Any	2016–17 and 2017–18	1
Rondy et al* (2015) <sup>91</sup>	Europe	Test negative	Inpatient	≥18 years	A(H1N1)pdm09, A(H3N2), and B	2012–13	1
Rondy et al* (2017) <sup>92</sup>	Europe	Test negative	Inpatient	≥65 years	A(H3N2)	2016–17	1
Rondy et al (2017) <sup>93</sup>	Europe	Test negative	Inpatient	≥65 years	A(H1N1)pdm09	2012–13, 2013–14, and 2015–16	2
Rondy et al (2017) <sup>93</sup>	Europe	Test negative	Inpatient	≥65 years	A(H3N2)	2011–12 and 2013–14	2
Rondy et al (2017) <sup>93</sup>	Europe	Test negative	Inpatient	≥65 years	B	2012–13 and 2015–16	2
Rose et al (2020) <sup>94</sup>	Europe	Test negative	Inpatient	≥65 years	A(H3N2) and B	2017–18	2
Saito et al (2017) <sup>95</sup>	Japan	Test negative	Outpatient	≥2 years	A	2009–10, 2010–11, and 2011–12	1
Saito et al (2018) <sup>96</sup>	Japan	Test negative	Outpatient	9–18 years	A and B	2011–12, 2012–13, and 2013–14	1 and 3
Shinjoh et al (2018) <sup>97</sup>	Japan	Test negative	Outpatient	2–15 years	Any and B	2016–17	1
Simpson et al (2015) <sup>98</sup>	Scotland	Test negative	Outpatient	All ages	Any	2000–01 to 2008–09	1
Skowronski et al* (2012) <sup>99</sup>	Canada	Test negative	Outpatient	≥2 years	A(H1N1)pdm09	2010–11	1
Skowronski et al* (2014) <sup>100</sup>	Canada	Test negative	Outpatient	≥2 years	A(H3N2), B, B/ Victoria, and B/ Yamagata	2012–13	1
Skowronski et al* (2014) <sup>101</sup>	Canada	Test negative	Outpatient	≥2 years	A(H1N1)pdm09, A(H3N2), B, B/ Victoria, and B/ Yamagata	2011–12	1
Skowronski et al* (2015) <sup>102</sup>	Canada	Test negative	Outpatient	≥2 years	A(H1N1)pdm09, B/ Yamagata, and B	2013–14	1
Skowronski et al* (2016) <sup>103</sup>	Canada	Test negative	Outpatient	≥2 years and 20–64 years	A(H3N2), B, and B/ Yamagata	2014–15	1
Skowronski et al* (2016) <sup>103</sup>	Canada	Test negative	Outpatient	≥3 years	A(H3N2), B, and B/ Yamagata	2014–15	2
Skowronski et al† (2017) <sup>104</sup>	Canada	Test negative	Outpatient	≥9 years	A(H3N2)	2010–11, 2012–13, and 2014–15	1 and 2
Skowronski et al* (2017) <sup>105</sup>	Canada	Test negative	Outpatient	≥9 years	A(H1N1)pdm09, B, and B/Victoria	2015–16	1 and 2
Skowronski et al† (2019) <sup>106</sup>	Canada	Test negative	Outpatient	≥9 years	B/Yamagata	2011–12, 2014–15, and 2017–18	1
Skowronski et al* (2019) <sup>107</sup>	Canada	Test negative	Outpatient	≥9 years	A(H3N2)	2018–19	1
Skowronski et al* (2020) <sup>108</sup>	Canada	Test negative	Outpatient	≥9 years	A(H3N2)	2016–17 and 2017–18	1

(Table 1 continues on next page)

Country	Design	Setting	Age range	Influenza virus type	Current season studied	Number of years previous vaccination	
(Continued from previous page)							
Smithgall et al (2016) <sup>105</sup>	USA	Test negative	Community	>6 months	Any	2013–14	1
Song et al* (2020) <sup>106</sup>	China	Test negative	Inpatient and outpatient	≥65 years	B	2012–13, 2013–14, and 2014–15	1
Sullivan et al (2013) <sup>15</sup>	Australia	Test negative	Outpatient	≥9 years	Any	2011, 2012	1
Sullivan et al† (2017) <sup>19</sup>	Australia	Test negative	Outpatient	All ages	A(H3N2) and B	2017	1
Syrjänen et al (2014) <sup>107</sup>	Finland	Prospective cohort	Community	18–75 years	A(H1N1)pdm09	2010–11	1
Thompson et al (2014) <sup>108</sup>	USA	Test negative	Community	Not specified	A(H1N1)pdm09, A(H3N2), and B	2010–11 and 2011–12	1
Thompson et al* (2016) <sup>109</sup>	USA	Test negative	Outpatient	2–8 years	A(H3N2)	2011–12 and 2012–13	1
Thompson et al* (2016) <sup>109</sup>	USA	Test negative	Outpatient	2–8 years	B	2012–13	1
Valenciano et al (2016) <sup>110</sup>	Europe	Test negative	Outpatient	≥18 years	A(H1N1)pdm09, A(H3N2), and B	2014–15	1
Valenciano et al* (2018) <sup>23</sup>	Europe	Test negative	Outpatient	≥9 years	A(H1N1)pdm09	2012–13, 2013–14, 2014–15, and 2015–16	1
Valenciano et al* (2018) <sup>23</sup>	Europe	Test negative	Outpatient	≥9 years	A(H3N2)	2011–12, 2013–14, 2014–15, and 2016–17	1
Valenciano et al* (2018) <sup>23</sup>	Europe	Test negative	Outpatient	≥9 years	B	2012–13, 2014–15, and 2015–16	1
Zhang et al (2017) <sup>111</sup>	China	Case control	Community	6–18 years	A	2014–15	1
Zhang et al* (2018) <sup>112</sup>	China	Test negative	Outpatient	≥2 years	A(H1N1)pdm09 and A(H3N2)	2015–16	1
Zhang et al* (2020) <sup>113</sup>	China	Case control	Community	6–19 years	A(H1N1)pdm09 and A(H3N2)	2016–17	1
Zimmerman et al* (2016) <sup>114</sup>	USA	Test negative	Outpatient	≥9 years	A(H3N2) and B/Yamagata	2014–15	1

ROBINS-I=Risk of Bias in Non-Randomized Studies of Interventions. \*Study was included in meta-analysis and was assessed as being at moderate risk of bias by the ROBINS-I. †Study was included in meta-analysis and was assessed as being at serious risk of bias by the ROBINS-I.

**Table 1: Study characteristics of 83 articles that met eligibility criteria for assessment of current and previous season vaccine effectiveness**

patients with no documented influenza A in the previous season.<sup>96</sup> For influenza B, however, estimates were comparable with their main findings when the analysis was restricted to those patients with no documented influenza B infection in the previous season.<sup>96</sup>

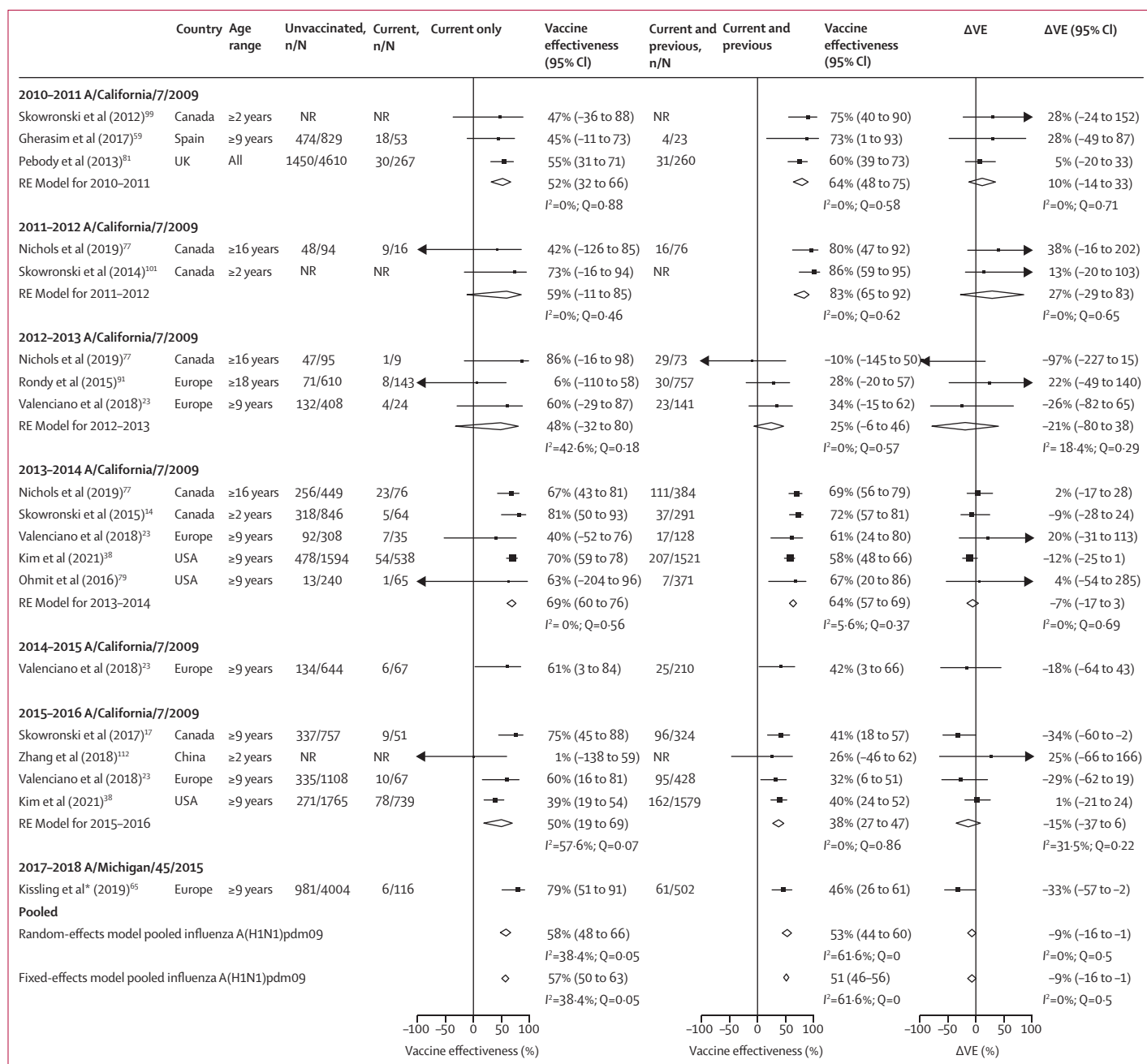
41 (49%) of 83 studies were eligible for inclusion in the meta-analysis (appendix pp 10–12). These studies reported a total of 85 type-specific or subtype-specific all-age estimates: 19 (23%) for influenza A(H1N1)pdm09, 30 (36%) for influenza A(H3N2), 22 (26%) for influenza B (lineage not specified), five (4%) for influenza B/Victoria, and nine (11%) for influenza B/Yamagata (figures 2–4 and table 2). Additionally, 28 estimates were age specific for children, adults, or older adults, in a ratio of 5:1:3 for influenza A(H1N1)pdm09, 7:1:2 for influenza A(H3N2), 2:2:3 for influenza B, and 1:1:0 for influenza B/Yamagata. No age-specific estimates were identified for influenza B/Victoria.

Estimates for influenza A(H1N1)pdm09 were reported for seven seasons (figure 2 and appendix pp 42–43). Across seasons, vaccine effectiveness was lower for people vaccinated in both the current and previous season (overall ΔVE -9% [95% CI -16 to -1]) than for those vaccinated for the current season only; however, in 2010–11 and 2011–12,

ΔVE was positive (10% [-14 to 33] and 27% [-29 to 83]). Few age group-specific vaccine effectiveness estimates were available. ΔVE was calculable for children and older adults and was close to the null for both these age groups (children ΔVE 1% [-18 to 21]; older adults ΔVE 6% [-14 to 26]; appendix pp 44–45).

Vaccine effectiveness estimates for influenza A(H3N2) were available for ten seasons but estimates could only be pooled for 7 seasons (figure 3 and appendix pp 46–47). Pooled vaccine effectiveness estimates for influenza A(H3N2) were low compared with other types, A subtypes or B lineages. Pooled vaccine effectiveness was 37% (95% CI 29–45) for the current season only group, 20% (12–27; ΔVE -18% [-26 to -11]) for the current and previous season group, and 9% (-3 to 19) for the previous season only group. Season-specific pooled vaccine effectiveness estimates for the current and previous season group were lower than for the current season only group (ΔVE >0%), except in 2013–14. The lower season-specific pooled vaccine effectiveness estimates for the current and previous season group were most pronounced in 2014–15 (ΔVE -38% [-67 to -9]). A small number of age-specific estimates were available to pool (appendix pp 48–49), which





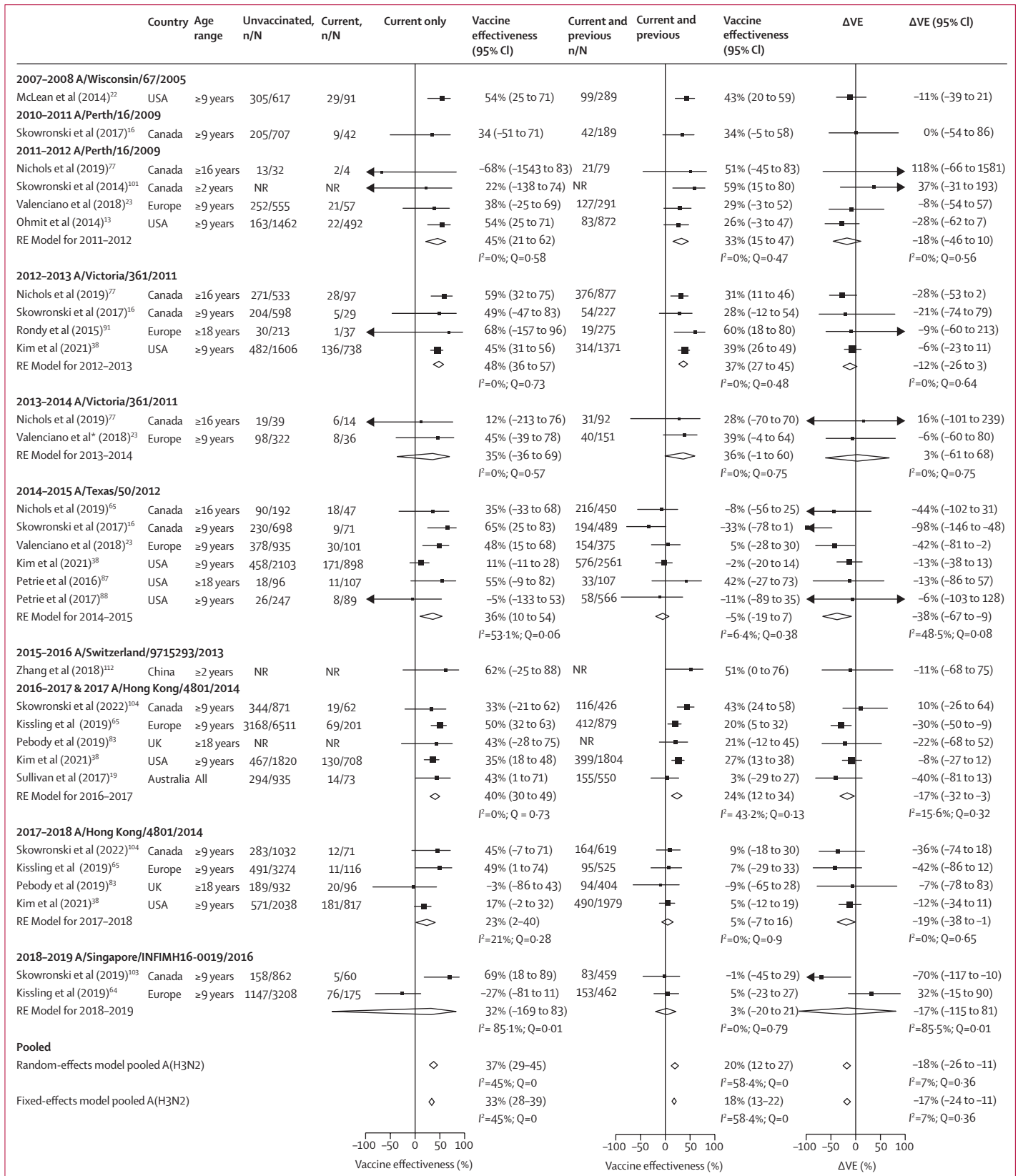
**Figure 2: Pooled vaccine effectiveness estimates against influenza A(H1N1)pdm09 for people vaccinated in the current season only, and current and previous seasons, and the difference in these estimates**

The reference group is people vaccinated in neither season. The previous season is defined as the influenza season immediately before the current season. The absolute difference in vaccine effectiveness (ΔVE) for people who were vaccinated in the current and previous (VE<sub>cp</sub>) seasons and those vaccinated in the current season only (VE<sub>c</sub>) was calculated as: ΔVE = VE<sub>cp</sub> - VE<sub>c</sub>. Random-effect models for each vaccination group are presented pooled by current season and across all seasons; see appendix (p 42) for fixed-effect estimates. Fixed-effect models are only presented for pooled estimates across all seasons; for season-specific fixed-effect estimates see appendix (p 42). NR=not reported. RE model=random-effect model estimate. ΔVE=change in vaccine effectiveness.

suggested vaccine effectiveness was better for children vaccinated in the current and previous seasons than for those vaccinated in the current season only, but worse for older adults. However, these estimates should be interpreted with caution as heterogeneity was moderate to high, random-effects and fixed-effects estimates

yielded divergent results (see the appendix p 48), and 95% CIs were wide and crossed the null, indicating inconsistent effects.

Most studies providing estimates for influenza B did not estimate vaccine effectiveness by lineage. Across eight seasons, irrespective of the infecting lineage and



the lineage included in the vaccine, vaccine effectiveness was minimally reduced for people vaccinated in consecutive seasons compared with those vaccinated in the current season only ( $\Delta VE$  -7% [95% CI -14 to 0]; figure 4; appendix pp 50–51). In seasons when trivalent vaccines included an influenza B/Yamagata lineage antigen, there was a greater drop in vaccine effectiveness for the current and previous season vaccination group (-10% [-19 to -2]) compared with when an influenza B/Victoria lineage antigen was in the vaccine (-2% [-13 to 9]). However, the infecting virus was often not lineage-matched to the vaccine. Season-specific pooled  $\Delta VE$  estimates favoured current and previous season vaccination for the 2011–12 seasons when the influenza B(Brisbane/60/2008)/Victoria lineage was the vaccine antigen but influenza B/Yamagata viruses dominated. Few estimates were available for age group analysis and pooled age-stratified estimates suggested no differences in effect between children, adults, and older adults ( $\Delta VE$  near the null; appendix pp 54–55).

Nine North American studies provided estimates against influenza B/Victoria and influenza B/Yamagata infection (appendix pp 52–53). Pooled estimates for each lineage suggested that the net reduction in vaccine effectiveness among those vaccinated in the current and previous seasons compared with those vaccinated in the current season only was greater for influenza B/Victoria viruses ( $\Delta VE$  -10% [95% CI -31 to 12]) than for influenza B/Yamagata viruses (-5% [-17 to 6]). However, the circulating lineage was mismatched in many seasons, with inconsistent trends across seasons.

Most studies included in the meta-analysis were judged to be at moderate risk of bias (all-age analyses: 23 [77%] studies; age-specific analyses: 12 [75%] studies; Table 1, appendix pp 56). Seven (23%) studies included in the all-age analyses<sup>16,19,77,93,79,88,102</sup> and four (25%) studies in age-group analyses<sup>57,74,79,88</sup> were judged to be at a serious risk of bias. The main sources of bias were potential confounding, bias in the classification of interventions due to self-reported vaccination status, and bias due to missing data (appendix p 56).

Within seasons, heterogeneity was generally small. However, there were some exceptions when estimates

from the different studies within a season provided divergent results leading to high  $I^2$  and discrepancies in random-effect and fixed-effect estimates (appendix p 42, 46). Across seasons, there was generally moderate heterogeneity for all types, A subtypes and B lineages, highlighting seasonal variations in vaccine effectiveness as vaccination formulation and circulating strains change. For influenza A(H3N2), there was also evidence of heterogeneity when summarising across age groups (appendix pp 48–49). Evidence of publication bias was apparent for influenza A(H3N2) estimates for the current and previous season vaccination group ( $p=0.03$ ; appendix pp 57–58).

None of the sensitivity analyses revealed a concerning change in estimates (appendix pp 59–63).

Using GRADE analysis, we assessed the certainty of evidence at baseline as low, owing to the observational study designs. The certainty for attenuation of vaccine effectiveness for influenza A(H1N1)pdm09 and influenza B remained low with subsequent vaccinations; that is, repeat vaccination might reduce vaccine effectiveness (appendix pp 64–68). For influenza A(H3N2), the certainty of evidence was downgraded to very low due to concerns about imprecision (ie, repeat vaccination might have reduced vaccine effectiveness, but the certainty of evidence was very low).

## Discussion

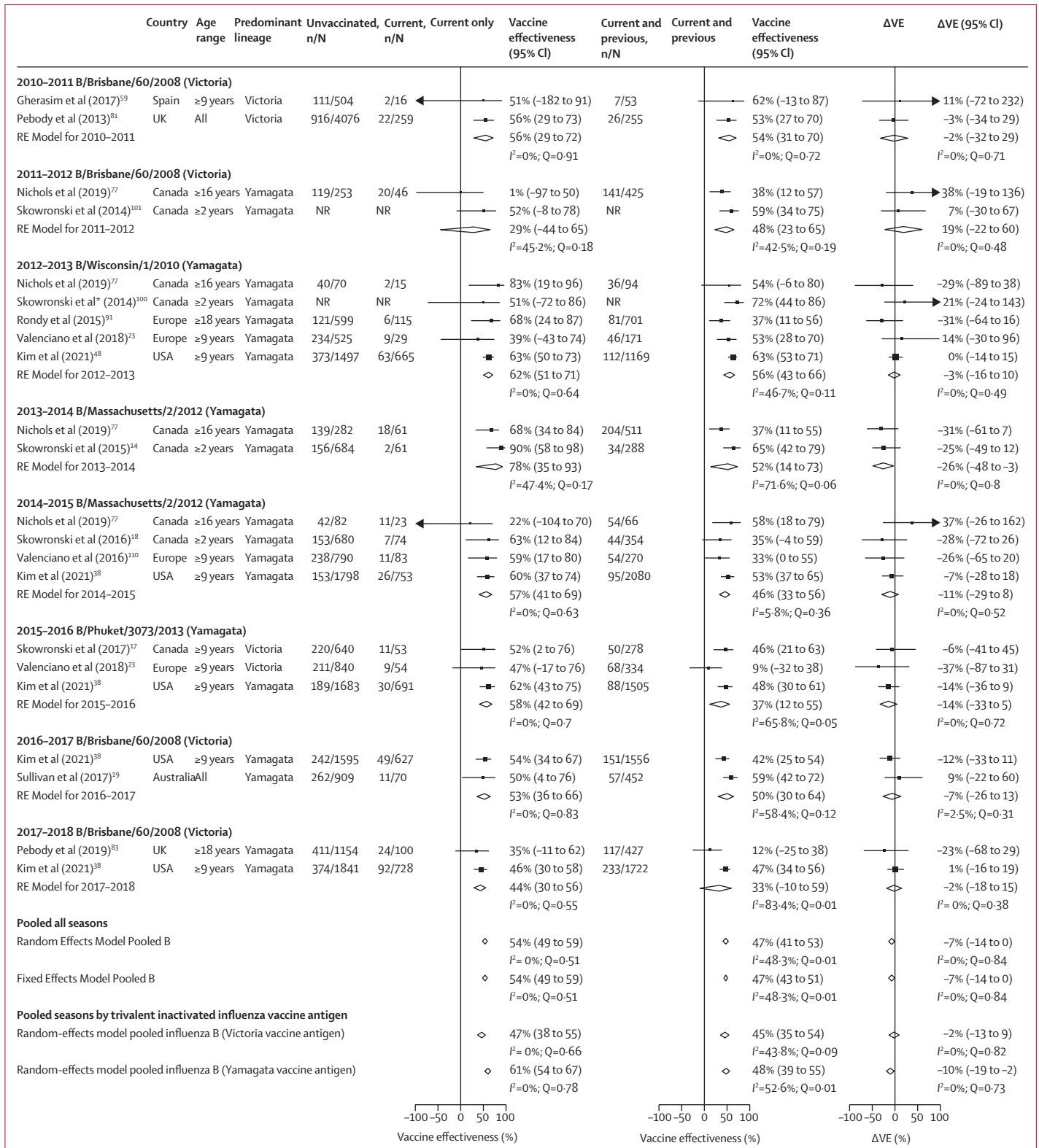
This systematic review of 83 studies did not identify sufficient evidence to warrant a change in annual influenza vaccination recommendations. The meta-analysis of 41 studies observed an average reduction in vaccine effectiveness for people vaccinated in the current and previous seasons compared with the current only season ( $\Delta VE$ ) of -9% (95% CI -16 to -1) for influenza A(H1N1)pdm09, -18% (-26 to -11) for influenza A(H3N2), and -7 (-14 to 0) for influenza B. These estimates suggest that there might be some attenuation of vaccine effectiveness with successive revaccination. However, in most seasons, vaccine effectiveness for the group vaccinated in the current and previous season was positive (vaccine effectiveness >0%) and was higher than vaccine effectiveness for the people vaccinated in the previous season only, indicating that vaccination in successive seasons offers better protection against influenza illness than no vaccination.

Estimates for the effects of repeated vaccination for influenza A(H1N1)pdm09 immediately after its pandemic appeared to indicate an additive benefit of consecutive vaccination for these viruses and lingering benefits to vaccination in a previous season, an observation shared with previous reviews.<sup>32,33</sup> “In the two seasons immediately following the influenza A(H1N1)pdm09 pandemic, a higher proportion of patients would have been recently infected (infected within the previous two seasons) than during seasons not immediately following a pandemic. Vaccination might have boosted infection-acquired

**Figure 3: Pooled vaccine effectiveness estimates against influenza A(H3N2) for people vaccinated in the current season only, and current and previous seasons, and the difference in these estimates**

The reference group is people vaccinated in neither season. The previous season is defined as the influenza season immediately before the current season.

The absolute difference in vaccine effectiveness ( $\Delta VE$ ) for people who were vaccinated in the current and previous ( $VE_{cp}$ ) seasons and for those vaccinated in the current season only ( $VE_c$ ) was calculated as:  $\Delta VE = VE_{cp} - VE_c$ . Random-effect models for each vaccination group are presented pooled by current season and across all seasons. Fixed-effect models are only presented for pooled estimates across all seasons; for season-specific fixed-effect estimates see appendix (p 46). NR=not reported. RE model=random-effect model estimate.  $\Delta VE$ =change in vaccine effectiveness. \*Unadjusted vaccine effectiveness estimates are only presented in study.



antibodies and conferred a high degree of protection in people who were vaccinated. This idea was supported by observations that vaccine effectiveness, even in people who had repeated vaccination, was higher in those with recent infection than in those without recent infection.<sup>11,95,96</sup> Moreover, influenza pandemic vaccine formulations in 2009–10 were adjuvanted and might have stimulated a broader immune response that continued to provide protection during the viruses' initial evolution. They were also initially monovalent so only stimulated antibody responses to one antigen, rather than three. Finally, the vaccination history in these seasons soon after the pandemic represent a cleaner vaccination history as they could not have received vaccination prior to 2009.

Low vaccine effectiveness against influenza A(H1N1)pdm09 in the 2013–14 season has been linked to a change in an epitope conserved between older seasonal influenza A(H1N1) and influenza A(H1N1)pdm09 viruses, on which antibodies were focused.<sup>29,30,116</sup> Some evidence suggests these effects are most pronounced in adult individuals born between 1965 and 1979.<sup>116</sup> However, in our study there were insufficient estimates available to assess whether the effects of repeated vaccination might vary with age. Since 2013–14, influenza A(H1N1)pdm09 viruses have continued to evolve and have diversified into cocirculating antigenically-distinct groups. This diversity increases the possibility that emerging circulating viruses will be antigenically distinct from the selected vaccine antigen. The degree to which  $\Delta VE$  continues to decrease for influenza A(H1N1)pdm09 might not become evident for several more years.

As expected, vaccine effectiveness against influenza A(H3N2) viruses appeared to be reduced most by repeated vaccination.  $\Delta VE$  estimates for influenza A(H3N2) viruses were the largest observed among types, A subtypes and B lineages, compounded by overall low vaccine effectiveness (mostly <40%). Nevertheless, in most seasons, vaccination in consecutive seasons afforded some protection and this protection exceeded the protection afforded by vaccination in the previous season only. In seasons when repeated vaccination appeared to be helpful, data were sparse and imprecise and the influence of those seasons on overall estimates was limited.

**Figure 4: Pooled vaccine effectiveness estimates against influenza B of any lineage for people vaccinated in the current season only, and current and previous seasons, and the difference in these estimates**

The reference group is people vaccinated in neither season. The previous season is defined as the influenza season immediately before the current season.

The absolute difference in vaccine effectiveness ( $\Delta VE$ ) for people who were vaccinated in the current and previous ( $VE_{cp}$ ) seasons and for those vaccinated in the current season only ( $VE_c$ ) was calculated as:  $\Delta VE = VE_{cp} - VE_c$ . Random-effect models for each vaccination group are presented pooled by current season, across all seasons, and by seasons by influenza B antigen included in the trivalent influenza vaccines. Fixed-effect models are presented for pooled estimates across all seasons; for season-specific fixed-effect estimates see appendix (p 50). NR=not reported. RE model=random-effect model estimate.  $\Delta VE$ =change in vaccine effectiveness.

	Current season	Previous season	Current and previous season	$\Delta VE_{\dagger}$	$\Delta VE_{\dagger}$
A(H1N1)pdm09	58% (48 to 66)	33% (21 to 43)	53% (44 to 60)	-9% (-16 to -1)	21% (11 to 30)
A(H3N2)	37% (29 to 45%)	9% (-3 to 19)	20% (12 to 27)	-18% (-26 to -11)	7% (-4 to 18)
B	54% (49 to 59)	21% (12 to 29)	47% (41 to 53)	-7% (-14 to 0)	25% (16 to 34)
B infection and B/Victoria in TIV	47% (38 to 55)	19% (6 to 31)	45% (35 to 54)	-2% (-13 to 9)	26% (11 to 40)
B infection and B/Yamagata in TIV	61% (54 to 67)	23% (11 to 34)	48% (39 to 55)	-10% (-19 to -2)	24% (12 to 37)
B-Victoria infection	61% (43 to 73)	31% (0 to 53)	52% (38 to 63)	-10% (-31 to 12)	15% (-10 to 41)
B-Yamagata infection	56% (39 to 68)	38% (25 to 49)	52% (42 to 60)	-5% (-17 to 6)	14 (0 to 28)

Data are vaccine effectiveness estimates (95% CI). TIV=trivalent influenza vaccine. VE=vaccine effectiveness. \*Random effect model results shown; for fixed effect estimates refer to the appendix (pp 41–55). † $\Delta VE > 0$  implies higher vaccine effective estimate when vaccinated in current and previous seasons compared with the current ( $VE_c$ ) or previous ( $VE_p$ ) season only.

**Table 2: Summary of meta-analyses\* of vaccine effectiveness for two consecutive seasons' vaccination history and influenza type or subtype**

Multiple factors might contribute to poor vaccine effectiveness against influenza A(H3N2). First, there is greater heterogeneity among circulating influenza A(H3N2) viruses than other influenza viruses, making it difficult to select antigens capable of eliciting a broad antibody response.<sup>117</sup> Second, influenza viruses might acquire adaptations that enable growth in eggs but alter antigenicity.<sup>31</sup> Most vaccination studies involve inactivated egg-grown virus vaccines, the effectiveness of which has been compromised in seasons when adaptations in the egg have affected key antigenic or glycosylation sites.<sup>100</sup> Inactivated cell-grown and recombinant haemagglutinin might be more immunogenic<sup>118–120</sup> and effective than egg-grown vaccines.<sup>121–123</sup> However, there were insufficient data available in our systematic review and meta-analysis to assess whether the growth substrate can overcome or alleviate the attenuating effects of repeated vaccination.

Immunological studies have shown that antibody responses to influenza A(H3N2) can be blunted with each additional vaccination received.<sup>8,10</sup> How this decrease in antibody response translates to vaccine effectiveness is unclear and the studies providing such information observed no consistent losses in vaccine effectiveness with successive years of vaccination, consistent with our expectations that these effects vary annually.<sup>24</sup> Antibody responses might increase when encountering an antigenically distinct vaccine antigen,<sup>11</sup> but infection appears to be more immunogenic than vaccination<sup>124</sup> and might mitigate the negative effects of previous vaccination.<sup>11,95</sup> However, permitting infection to improve vaccine responses is counterintuitive. Similarly, biannual vaccination has been proposed as a potential measure to mitigate repeat vaccination effects, and one modelling study suggests this would provide comparable protection

to annual vaccination in repeat vaccinees.<sup>125</sup> However, such a programme might be logistically challenging. Continued and bolstered support for surveillance systems and research is needed to investigate these scenarios of successive vaccination, interrupted vaccination, and infection versus vaccination to help guide policy decision making.

Our analysis of influenza A(H3N2) vaccine effectiveness by age group was also hampered by insufficient data. Importantly, the data available represented a small number of seasons and should be interpreted with caution because of strong seasonal effects and heterogeneity among seasons. Although attenuation of vaccine effectiveness might be more pronounced in older age groups than in younger age groups, we cannot be certain of this on the basis of the available data. Some of the reduced vaccine effectiveness in older age groups might be associated with immunosenescence. However, modelling studies have suggested that poor vaccine effectiveness in older age groups is better explained by repeated vaccination than with age-associated immunosenescence.<sup>126</sup> More data are needed before drawing any conclusions about the age-specific effects of repeated influenza A(H3N2) vaccination.

For influenza B, the reduction in vaccine effectiveness associated with repeated vaccination was small. Understanding these effects for influenza B is complicated by lineage-mismatched trivalent inactivated influenza vaccine and interseasonal variations in the dominant lineage. Disentangling the effects of repeated vaccination for influenza B lineages will be enabled by increased use of quadrivalent vaccines. However, circulation of influenza B/Yamagata lineage viruses has not been confirmed since early 2020,<sup>127</sup> so ongoing monitoring of this lineage might become irrelevant.

A key observation for all types, A subtypes or B lineages of influenza was evidence of heterogeneity between, but not necessarily within, seasons. In some seasons, the  $I^2$  statistic might not have been a reliable indicator of heterogeneity because most estimates were imprecise and consistency of effect might be more important for interpretation. Nevertheless, interseasonal variability in estimates reinforces hypotheses that the effects of repeated vaccination are not expected to be evident every year and are influenced by interseasonal variations in vaccine formulations, dominant circulating viruses, emergence of antigenically drifted variants, antigenic similarity between vaccine and circulating antigens, and the overall population susceptibility. Pooling data across seasons hides some of these problems but does not indicate the absence of a problem.

Our systematic review and meta-analysis followed PRISMA guidelines (see appendix (pp 2-4) for PRISMA checklist) and registered our protocol with Prospero. We incorporated a risk of bias analysis and used GRADE to evaluate the weight of the available information. We conducted extensive sensitivity analyses to assess the

robustness of our conclusions and have highlighted where the data provide inconclusive evidence. Nevertheless, our study was hampered by low availability of estimates for subgroup assessments, especially for age group. Given the importance of repeated vaccine effectiveness for vaccination policy, it is recommended that studies attempting to estimate seasonal influenza vaccine effectiveness routinely collect information on previous season's vaccination status and be sufficiently powered for subgroup estimation. In addition, many studies had few patients in the current season vaccination only and previous season vaccination only groups, leading to estimates with high uncertainty and, in some cases, vaccine effectiveness could not be estimated. In these cases, we elected to include all available estimates even if some vaccine group estimates were unavailable for a particular study, preferring to use all available information than to exclude a study. Bolstered support for vaccine effectiveness studies to ensure adequate numbers of patients in all vaccination groups is necessary to improve the quality of estimates to inform vaccine policy decision making.

In conclusion, the data available currently suggest the vaccine effectiveness for people vaccinated in both the current and previous season is, on average, comparable with vaccine effectiveness for people vaccinated in the current season only and better than vaccine effectiveness for people vaccinated in the previous season only. Vaccine effectiveness against influenza A(H3N2) is worse overall and there is a greater loss of effectiveness with repeated vaccination. Quantifying the relative vaccine effectiveness for people vaccinated in consecutive seasons is difficult if vaccine effectiveness is low and points to the general need for better vaccines against these viruses in particular and against influenza in general.<sup>128</sup> Although there will be seasons when the effects of repeated vaccination are more pronounced than others, the current evidence does not suggest there is a consistent and severe enough attenuation to recommend any changes to annual vaccination recommendations.

#### Contributors

AJK, AF, and SGS secured funding to support this study. SGS and EJ-G developed the protocol. EJ-G designed and ran the literature search. EJ-G and EJR screened records, extracted data, and assessed risk of bias. EJ-G and EJR independently extracted the estimates used in meta-analyses (the underlying data), and all authors had access to the extracted data and the scripts used for statistical analyses. EJR did statistical analyses with input from EJ-G and SGS. EJ-G, EJR, and SGS wrote the initial draft. All authors provided critical conceptual input, analysed and interpreted data, and critically revised subsequent drafts. All authors accept responsibility for the decision to submit for publication.

#### Declaration of interests

SGS and AF report the following funding for influenza vaccination and infection studies: US National Institutes of Health (SGS and AF); US Centers for Disease Control (SGS and AF); the National Health and Medical Research Council of Australia (AF); and OptumLabs research credits (SGS). SGS and AF are employed by the WHO Collaborating Centre for Reference and Research on Influenza, which receives funding from the International Federation of Pharmaceutical Manufacturers and

Associations and Seqiris for the development of influenza vaccines. SGS has served in an unpaid capacity on advisory boards for Sanofi and Seqiris. From 2017–21, SGS was a member of the WHO Strategic Advisory Group of Experts (SAGE) on Immunization Working Group on Influenza. SGS serves on the Australian National Influenza Surveillance Committee. EJ-G, EJ-R, and AJ-K declare no competing interests.

#### Data sharing

Extracted data are available from the corresponding author on request.

#### Acknowledgments

This systematic review and meta-analysis was commissioned and partly supported by WHO for the Strategic Advisory Group of Experts (SAGE) on Immunization. EJ-R and EJ-G were additionally supported by US National Institutes of Health project grant (R01AI141534). The authors are responsible for the views expressed in this article and they do not necessarily represent the decisions, policy, or views of WHO or the US National Institutes of Health. We thank Stephany Sanchez (Peter Doherty Institute for Infection and Immunity, Melbourne, VIC, Australia) for assistance with Spanish language articles; Xin (Kelly) Mu (University of Melbourne, Melbourne, VIC, Australia) for assistance with Chinese language articles; Arseniy Khvorov (Peter Doherty Institute for Infection and Immunity, Melbourne, VIC, Australia) for assistance with Russian language articles; Kylie Ainslie (National Institute for Public Health and the Environment, Bilthoven, Netherlands) for assistance with Dutch language articles; Yuzo Arima (National Institute for Infectious Diseases, Tokyo, Japan) and Miku Kuba (Peter Doherty Institute for Infection and Immunity, Melbourne, VIC, Australia) for assistance with Japanese language articles. We also thank members of the SAGE Immunization Working Group on Influenza for feedback on the original report. The WHO Collaborating Centre for Reference and Research on Influenza is supported by the Australian Government Department of Health and Aged Care.

#### References

- Bedford T, Riley S, Barr IG, et al. Global circulation patterns of seasonal influenza viruses vary with antigenic drift. *Nature* 2015; **523**: 217–20.
- Kissling E, Nunes B, Robertson C, et al. I-MOVE multicentre case-control study 2010/11 to 2014/15: is there within-season waning of influenza type/subtype vaccine effectiveness with increasing time since vaccination? *Euro Surveill* 2016; **21**: 13–24.
- Ferdinands JM, Fry AM, Reynolds S, et al. Intra-season waning of influenza vaccine effectiveness: evidence from the US Influenza Vaccine Effectiveness Network, 2011–12 through 2014–15. *Clin Infect Dis* 2017; **64**: 544–50.
- Vaccines against influenza WHO position paper—November 2012. *Wkly Epidemiol Rec* 2012; **87**: 461–76.
- Hoskins TW, Davies JR, Smith AJ, Miller CL, Allchin A. Assessment of inactivated influenza-A vaccine after three outbreaks of influenza A at Christ's Hospital. *Lancet* 1979; **1**: 33–35.
- Beyer WE, de Bruijn IA, Palache AM, Westendorp RG, Osterhaus AD. Protection against influenza after annually repeated vaccination: a meta-analysis of serologic and field studies. *Arch Intern Med* 1999; **159**: 182–88.
- Nabeshima S, Kashiwagi K, Murata M, Kanamoto Y, Furusyo N, Hayashi J. Antibody response to influenza vaccine in adults vaccinated with identical vaccine strains in consecutive years. *J Med Virol* 2007; **79**: 320–25.
- Thompson MG, Naleway A, Fry AM, et al. Effects of repeated annual inactivated influenza vaccination among healthcare personnel on serum hemagglutinin inhibition antibody response to A/Perth/16/2009 (H3N2)-like virus during 2010–11. *Vaccine* 2016; **34**: 981–88.
- Leung VKY, Carolan LA, Worth LJ, et al. Influenza vaccination responses: evaluating impact of repeat vaccination among health care workers. *Vaccine* 2017; **35**: 2558–68.
- Leung VKY, Fox A, Carolan LA, et al. Impact of prior vaccination on antibody response and influenza-like illness among Australian healthcare workers after influenza vaccination in 2016. *Vaccine* 2021; **39**: 3270–78.
- Fox A, Carolan L, Leung V, et al. Opposing effects of prior infection versus prior vaccination on vaccine immunogenicity against influenza A(H3N2) viruses. *Viruses* 2022; **14**: 470.
- Ohmit SE, Petrie JG, Malosh RE, et al. Influenza vaccine effectiveness in the community and the household. *Clin Infect Dis* 2013; **56**: 1363–69.
- Ohmit SE, Thompson MG, Petrie JG, et al. Influenza vaccine effectiveness in the 2011–2012 season: protection against each circulating virus and the effect of prior vaccination on estimates. *Clin Infect Dis* 2014; **58**: 319–27.
- Skowronski DM, Chambers C, Sabaiduc S, et al. Interim estimates of 2014/15 vaccine effectiveness against influenza A(H3N2) from Canada's Sentinel Physician Surveillance Network, January 2015. *Euro Surveill* 2015; **20**: 21022.
- Sullivan SG, Kelly H. Stratified estimates of influenza vaccine effectiveness by prior vaccination: caution required. *Clin Infect Dis* 2013; **57**: 474–76.
- Skowronski DM, Chambers C, De Serres G, et al. Serial vaccination and the antigenic distance hypothesis: effects on influenza vaccine effectiveness during A(H3N2) epidemics in Canada, 2010–2011 to 2014–2015. *J Infect Dis* 2017; **215**: 1059–99.
- Skowronski DM, Chambers C, Sabaiduc S, et al. Beyond antigenic match: possible agent-host and immuno-epidemiological influences on influenza vaccine effectiveness during the 2015–2016 season in Canada. *J Infect Dis* 2017; **216**: 1487–500.
- Skowronski DM, Chambers C, Sabaiduc S, et al. A perfect storm: impact of genomic variation and serial vaccination on low influenza vaccine effectiveness during the 2014–2015 season. *Clin Infect Dis* 2016; **63**: 21–32.
- Sullivan SG, Chilver MB, Carville KS, et al. Low interim influenza vaccine effectiveness, Australia, 1 May to 24 September 2017. *Euro Surveill* 2017; **22**: 17–00707.
- Hoskins TW, Davies JR, Smith AJ, Allchin A, Miller CL, Pollock TM. Influenza at Christ's Hospital: March, 1974. *Lancet* 1976; **1**: 105–08.
- Belongia EA, Skowronski DM, McLean HQ, Chambers C, Sundaram ME, De Serres G. Repeated annual influenza vaccination and vaccine effectiveness: review of evidence. *Expert Rev Vaccines* 2017; **16**: 1–14.
- McLean HQ, Thompson MG, Sundaram ME, et al. Impact of repeated vaccination on vaccine effectiveness against influenza A(H3N2) and B during 8 seasons. *Clin Infect Dis* 2014; **59**: 1375–85.
- Valenciano M, Kissling E, Larrauri A, et al. Exploring the effect of previous inactivated influenza vaccination on seasonal influenza vaccine effectiveness against medically attended influenza: results of the European I-MOVE multicentre test-negative case-control study, 2011/2012–2016/2017. *Influenza Other Respir Viruses* 2018; **12**: 567–81.
- Smith DJ, Forrest S, Ackley DH, Perelson AS. Variable efficacy of repeated annual influenza vaccination. *Proc Natl Acad Sci USA* 1999; **96**: 14001–06.
- Bedford T, Suchard MA, Lemey P, et al. Integrating influenza antigenic dynamics with molecular evolution. *eLife* 2014; **3**: e01914.
- Davenport FM, Hennessy AV, Francis T Jr. Epidemiologic and immunologic significance of age distribution of antibody to antigenic variants of influenza virus. *J Exp Med* 1953; **98**: 641–56.
- Fonville JM, Wilks SH, James SL, et al. Antibody landscapes after influenza virus infection or vaccination. *Science* 2014; **346**: 996–1000.
- Lessler J, Riley S, Read JM, et al. Evidence for antigenic seniority in influenza A (H3N2) antibody responses in southern China. *PLoS Pathog* 2012; **8**: e1002802.
- Li Y, Myers JL, Bostick DL, et al. Immune history shapes specificity of pandemic H1N1 influenza antibody responses. *J Exp Med* 2013; **210**: 1493–500.
- Huang KY, Rijal P, Schimanski L, et al. Focused antibody response to influenza linked to antigenic drift. *J Clin Invest* 2015; **125**: 2631–45.
- Zost SJ, Parkhouse K, Gumina ME, et al. Contemporary H3N2 influenza viruses have a glycosylation site that alters binding of antibodies elicited by egg-adapted vaccine strains. *Proc Natl Acad Sci USA* 2017; **114**: 12578–83.
- Ramsay LC, Buchan SA, Stirling RG, et al. The impact of repeated vaccination on influenza vaccine effectiveness: a systematic review and meta-analysis. *BMC Med* 2019; **17**: 9.
- Belongia EA, Skowronski DM, McLean HQ, Chambers C, Sundaram ME, De Serres G. Repeated annual influenza vaccination and vaccine effectiveness: review of evidence. *Expert Rev Vaccines* 2017; **16**: 1–14.

- 34 Sterne JA, Hernán MA, Reeves BC, et al. ROBINS-I: a tool for assessing risk of bias in non-randomised studies of interventions. *BMJ* 2016; **355**: i4919.
- 35 Schünemann HBJ, Guyatt G, Oxman A, eds. GRADE handbook for grading quality of evidence and strength of recommendations. Updated October 2013. The GRADE Working Group. <https://gdt.gradepro.org/app/handbook/handbook.html> (accessed June 1, 2022).
- 36 Feng S, Cowling BJ, Kelly H, Sullivan SG. Estimating influenza vaccine effectiveness with the test-negative design using alternative control groups: a systematic review and meta-analysis. *Am J Epidemiol* 2018; **187**: 389–97.
- 37 Foppa IM, Haber M, Ferdinands JM, Shay DK. The case test-negative design for studies of the effectiveness of influenza vaccine. *Vaccine* 2013; **31**: 3104–09.
- 38 Kim SS, Flannery B, Foppa IM, et al. Effects of prior season vaccination on current season vaccine effectiveness in the United States Flu Vaccine Effectiveness Network, 2012–2013 through 2017–2018. *Clin Infect Dis* 2021; **73**: 497–505.
- 39 Poole C, Greenland S. Random-effects meta-analyses are not always conservative. *Am J Epidemiol* 1999; **150**: 469–75.
- 40 Lin L, Chu H. Quantifying publication bias in meta-analysis. *Biometrics* 2018; **74**: 785–94.
- 41 Higgins JPT, Thomas J, Chandler J, et al. *Cochrane Handbook for Systematic Reviews of Interventions*, 2nd edn. Hoboken, NJ: Wiley Blackwell, 2019.
- 42 Boddington NL, Warburton F, Zhao H, et al. Influenza vaccine effectiveness against hospitalisation due to laboratory-confirmed influenza in children in England in the 2015–2016 influenza season—a test-negative case-control study. *Epidemiol Infect* 2019; **147**: e201.
- 43 Buchan SA, Chung H, Campitelli MA, et al. Vaccine effectiveness against laboratory-confirmed influenza hospitalizations among young children during the 2010–11 to 2013–14 influenza seasons in Ontario, Canada. *PLoS One* 2017; **12**: e0187834.
- 44 Buchan SA, Booth S, Scott AN, et al. Effectiveness of live attenuated vs inactivated influenza vaccines in children during the 2012–2013 through 2015–2016 influenza seasons in Alberta, Canada: a Canadian Immunization Research Network (CIRN) study. *JAMA Pediatr* 2018; **172**: e181514.
- 45 Casado I, Domínguez A, Toledo D, et al. Effect of influenza vaccination on the prognosis of hospitalized influenza patients. *Expert Rev Vaccines* 2016; **15**: 425–32.
- 46 Casado I, Domínguez Á, Toledo D, et al. Repeated influenza vaccination for preventing severe and fatal influenza infection in older adults: a multicentre case-control study. *CMAJ* 2018; **190**: e3–12.
- 47 Castilla J, Moran J, Martínez-Artola V, et al. Effectiveness of trivalent seasonal and monovalent influenza A(H1N1)2009 vaccines in population with major chronic conditions of Navarre, Spain: 2010/11 mid-season analysis. *Euro Surveill* 2011; **16**: 19799.
- 48 Castilla J, Navascués A, Fernández-Alonso M, et al. Effectiveness of subunit influenza vaccination in the 2014–2015 season and residual effect of split vaccination in previous seasons. *Vaccine* 2016; **34**: 1350–57.
- 49 Castilla J, Navascués A, Casado I, et al. Combined effectiveness of prior and current season influenza vaccination in northern Spain: 2016/17 mid-season analysis. *Euro Surveill* 2017; **22**: 30465.
- 50 Castilla J, Navascués A, Casado I, et al. Interim effectiveness of trivalent influenza vaccine in a season dominated by lineage mismatched influenza B, northern Spain, 2017/18. *Euro Surveill* 2018; **23**: 18–00057.
- 51 Castilla J, Portillo ME, Casado I, et al. Effectiveness of the current and prior influenza vaccinations in Northern Spain, 2018–2019. *Vaccine* 2020; **38**: 1925–32.
- 52 Cheng AC, Macartney KK, Waterer GW, et al. Repeated vaccination does not appear to impact upon influenza vaccine effectiveness against hospitalization with confirmed influenza. *Clin Infect Dis* 2017; **64**: 1564–72.
- 53 Domínguez A, Soldevila N, Toledo D, et al. The effectiveness of influenza vaccination in preventing hospitalisations of elderly individuals in two influenza seasons: a multicentre case-control study, Spain, 2013/14 and 2014/15. *Euro Surveill* 2017; **22**: 30602.
- 54 El Omeiri N, Azziz-Baumgartner E, Thompson MG, et al. Seasonal influenza vaccine effectiveness against laboratory-confirmed influenza hospitalizations—Latin America, 2013. *Vaccine* 2018; **36**: 3555–66.
- 55 Ferdinands JM, Gaglani M, Martin ET, et al. Prevention of influenza hospitalization among adults in the United States, 2015–2016: results from the US Hospitalized Adult Influenza Vaccine Effectiveness Network (HAIVEN). *J Infect Dis* 2019; **220**: 1265–75.
- 56 Flannery B, Chung JR, Monto AS, et al. Influenza vaccine effectiveness in the United States during the 2016–2017 season. *Clin Infect Dis* 2019; **68**: 1798–806.
- 57 Fu C, Xu J, Lin J, et al. Concurrent and cross-season protection of inactivated influenza vaccine against A(H1N1)pdm09 illness among young children: 2012–2013 case-control evaluation of influenza vaccine effectiveness. *Vaccine* 2015; **33**: 2917–21.
- 58 Gaglani M, Pruszyński J, Murthy K, et al. Influenza vaccine effectiveness against 2009 pandemic influenza A(H1N1) virus differed by vaccine type during 2013–2014 in the United States. *J Infect Dis* 2016; **213**: 1546–56.
- 59 Gherasim A, Martínez-Baz I, Castilla J, Pozo F, Larrauri A. Effect of previous and current vaccination against influenza A(H1N1)pdm09, A(H3N2), and B during the post-pandemic period 2010–2016 in Spain. *PLoS One* 2017; **12**: e0179160.
- 60 Grijalva CG, Feldstein LR, Talbot HK, et al. Influenza vaccine effectiveness for prevention of severe influenza-associated illness among adults in the United States, 2019–2020: a test-negative study. *Clin Infect Dis* 2021; **73**: 1459–68.
- 61 Jackson ML, Chung JR, Jackson LA, et al. Influenza vaccine effectiveness in the United States during the 2015–2016 season. *N Engl J Med* 2017; **377**: 534–43.
- 62 Jiménez-Jorge S, Savulescu C, Pozo F, et al. Effectiveness of the 2010–11 seasonal trivalent influenza vaccine in Spain: cycEVA study. *Vaccine* 2012; **30**: 3595–602.
- 63 Kissling E, Valenciano M, Pozo F, et al. 2015/16 I-MOVE/I-MOVE+ multicentre case-control study in Europe: moderate vaccine effectiveness estimates against influenza A(H1N1)pdm09 and low estimates against lineage-mismatched influenza B among children. *Influenza Other Respir Viruses* 2018; **12**: 423–37.
- 64 Kissling E, Pozo F, Buda S, et al. Low 2018/19 vaccine effectiveness against influenza A(H3N2) among 15–64-year-olds in Europe: exploration by birth cohort. *Euro Surveill* 2019; **24**: 1900604.
- 65 Kissling E, Pozo F, Buda S, et al. Effectiveness of influenza vaccine against influenza A in Europe in seasons of different A(H1N1)pdm09 and the same A(H3N2) vaccine components (2016–17 and 2017–18). *Vaccine X* 2019; **3**: 100042.
- 66 Kwong JC, Chung H, Jung JK, et al. The impact of repeated vaccination using 10-year vaccination history on protection against influenza in older adults: a test-negative design study across the 2010/11 to 2015/16 influenza seasons in Ontario, Canada. *Euro Surveill* 2020; **25**: 1900245.
- 67 Ma C, Pan Y, Zhang L, et al. Influenza vaccine effectiveness against medically attended influenza illness in Beijing, China, 2014/15 season. *Hum Vaccin Immunother* 2017; **13**: 2379–84.
- 68 Martínez-Baz I, Martínez-Artola V, Reina G, et al. Effectiveness of the trivalent influenza vaccine in Navarre, Spain, 2010–2011: a population-based test-negative case-control study. *BMC Public Health* 2013; **13**: 191.
- 69 Martínez-Baz I, Casado I, Navascués A, et al. Effect of repeated vaccination with the same vaccine component against 2009 pandemic influenza A(H1N1) virus. *J Infect Dis* 2017; **215**: 847–55.
- 70 Martínez-Baz I, Navascués A, Casado I, Aguinaga A, Ezpeleta C, Castilla J. Simple models to include influenza vaccination history when evaluating the effect of influenza vaccination. *Euro Surveill* 2021; **26**: 2001099.
- 71 Martínez-Baz I, Navascués A, Portillo ME, et al. Effect of influenza vaccination in preventing laboratory-confirmed influenza hospitalization in patients with diabetes mellitus. *Clin Infect Dis* 2021; **73**: 107–14.
- 72 McLean HQ, Thompson MG, Sundaram ME, et al. Influenza vaccine effectiveness in the United States during 2012–2013: variable protection by age and virus type. *J Infect Dis* 2015; **211**: 1529–40.
- 73 McLean HQ, Caspard H, Griffin MR, et al. Effectiveness of live attenuated influenza vaccine and inactivated influenza vaccine in children during the 2014–2015 season. *Vaccine* 2017; **35**: 2685–93.



- 74 McLean HQ, Caspard H, Griffin MR, et al. Association of prior vaccination with influenza vaccine effectiveness in children receiving live attenuated or inactivated vaccine. *JAMA Netw Open* 2018; **1**: e183742.
- 75 Mira-Iglesias A, Lopez-Labrador FX, Guglieri-Lopez B, et al. Influenza vaccine effectiveness in preventing hospitalisation of individuals 60 years of age and over with laboratory-confirmed influenza, Valencia Region, Spain, influenza season 2016/17. *Euro Surveill* 2018; **23**: 17–00318.
- 76 Mira-Iglesias A, Lopez-Labrador FX, Baselga-Moreno V, et al. Influenza vaccine effectiveness against laboratory-confirmed influenza in hospitalised adults aged 60 years or older, Valencia Region, Spain, 2017/18 influenza season. *Euro Surveill* 2019; **24**: 1800461.
- 77 Nichols MK, Andrew MK, Ye L, et al. The impact of prior season vaccination on subsequent influenza vaccine effectiveness to prevent influenza-related hospitalizations over 4 influenza seasons in Canada. *Clin Infect Dis* 2019; **69**: 970–79.
- 78 Ohmit SE, Petrie JG, Malosh RE, Fry AM, Thompson MG, Monto AS. Influenza vaccine effectiveness in households with children during the 2012–2013 season: assessments of prior vaccination and serologic susceptibility. *J Infect Dis* 2015; **211**: 1519–28.
- 79 Ohmit SE, Petrie JG, Malosh RE, et al. Substantial influenza vaccine effectiveness in households with children during the 2013–2014 influenza season, when 2009 pandemic influenza A(H1N1) virus predominated. *J Infect Dis* 2016; **213**: 1229–36.
- 80 Örtqvist Å, Brytting M, Leval A, Hergens MP. Impact of repeated influenza vaccinations in persons over 65 years of age: a large population-based cohort study of severe influenza over six consecutive seasons, 2011/12–2016/17. *Vaccine* 2018; **36**: 5556–64.
- 81 Pebody RG, Andrews N, Fleming DM, et al. Age-specific vaccine effectiveness of seasonal 2010/2011 and pandemic influenza A(H1N1) 2009 vaccines in preventing influenza in the United Kingdom. *Epidemiol Infect* 2013; **141**: 620–30.
- 82 Pebody R, Warburton F, Ellis J, et al. End-of-season influenza vaccine effectiveness in adults and children, United Kingdom, 2016/17. *Euro Surveill* 2017; **22**: 17–00306.
- 83 Pebody R, Djennad A, Ellis J, et al. End of season influenza vaccine effectiveness in adults and children in the United Kingdom in 2017/18. *Euro Surveill* 2019; **24**: 1800488.
- 84 Pebody RG, Zhao H, Whitaker HJ, et al. Effectiveness of influenza vaccine in children in preventing influenza associated hospitalisation, 2018/19, England. *Vaccine* 2020; **38**: 158–64.
- 85 Pebody R, Whitaker H, Zhao H, et al. Protection provided by influenza vaccine against influenza-related hospitalisation in ≥65 year olds: early experience of introduction of a newly licensed adjuvanted vaccine in England in 2018/19. *Vaccine* 2020; **38**: 173–79.
- 86 Pebody RG, Whitaker H, Ellis J, et al. End of season influenza vaccine effectiveness in primary care in adults and children in the United Kingdom in 2018/19. *Vaccine* 2020; **38**: 489–97.
- 87 Petrie JG, Ohmit SE, Cheng CK, et al. Influenza Vaccine Effectiveness against antigenically drifted influenza higher than expected in hospitalized adults: 2014–2015. *Clin Infect Dis* 2016; **63**: 1017–25.
- 88 Petrie JG, Malosh RE, Cheng CK, et al. The household influenza vaccine effectiveness study: lack of antibody response and protection following receipt of 2014–2015 influenza vaccine. *Clin Infect Dis* 2017; **65**: 1644–51.
- 89 Powell LN, Bégue RE. Influenza vaccine effectiveness among children for the 2017–2018 season. *J Pediatric Infect Dis Soc* 2020; **9**: 468–73.
- 90 Rao S, Moss A, Lamb MM, Asturias EJ. Evaluation of influenza vaccine effectiveness among young children receiving consecutive versus nonconsecutive vaccination during influenza A(H3N2)-predominant seasons. *J Pediatric Infect Dis Soc* 2021; **10**: 359–62.
- 91 Rondy M, Launay O, Puig-Barbera J, et al. 2012/13 influenza vaccine effectiveness against hospitalised influenza A(H1N1)pdm09, A(H3N2) and B: estimates from a European network of hospitals. *Euro Surveill* 2015; **20**: 21011.
- 92 Rondy M, Gherasim A, Casado I, et al. Low 2016/17 season vaccine effectiveness against hospitalised influenza A(H3N2) among elderly: awareness warranted for 2017/18 season. *Euro Surveill* 2017; **22**: 17–00645.
- 93 Rondy M, Launay O, Castilla J, et al. Repeated seasonal influenza vaccination among elderly in Europe: Effects on laboratory confirmed hospitalised influenza. *Vaccine* 2017; **35**: 4298–306.
- 94 Rose AMC, Kissling E, Gherasim A, et al. Vaccine effectiveness against influenza A(H3N2) and B among laboratory-confirmed, hospitalised older adults, Europe, 2017–18: a season of B lineage mismatched to the trivalent vaccine. *Influenza Other Respir Viruses* 2020; **14**: 302–10.
- 95 Saito N, Komori K, Suzuki M, et al. Negative impact of prior influenza vaccination on current influenza vaccination among people infected and not infected in prior season: a test-negative case-control study in Japan. *Vaccine* 2017; **35**: 687–93.
- 96 Saito N, Komori K, Suzuki M, Kishikawa T, Yasaka T, Ariyoshi K. Dose-dependent negative effects of prior multiple vaccinations against influenza A and influenza B among schoolchildren: a study of Kamigoto Island in Japan during the 2011–2012, 2012–2013, and 2013–2014 influenza seasons. *Clin Infect Dis* 2018; **67**: 897–904.
- 97 Shinjoh M, Sugaya N, Yamaguchi Y, et al. Inactivated influenza vaccine effectiveness and an analysis of repeated vaccination for children during the 2016/17 season. *Vaccine* 2018; **36**: 5510–18.
- 98 Simpson CR, Lone NI, Kavanagh K, et al. Trivalent inactivated seasonal influenza vaccine effectiveness for the prevention of laboratory-confirmed influenza in a Scottish population 2000 to 2009. *Euro Surveill* 2015; **20**: 21043.
- 99 Skowronski DM, Janjua NZ, De Serres G, et al. A sentinel platform to evaluate influenza vaccine effectiveness and new variant circulation, Canada 2010–2011 season. *Clin Infect Dis* 2012; **55**: 332–42.
- 100 Skowronski DM, Janjua NZ, De Serres G, et al. Low 2012–13 influenza vaccine effectiveness associated with mutation in the egg-adapted H3N2 vaccine strain not antigenic drift in circulating viruses. *PLoS One* 2014; **9**: e92153.
- 101 Skowronski DM, Janjua NZ, Sabaiduc S, et al. Influenza A/subtype and B/lineage effectiveness estimates for the 2011–2012 trivalent vaccine: cross-season and cross-lineage protection with unchanged vaccine. *J Infect Dis* 2014; **210**: 126–37.
- 102 Skowronski DM, Chambers C, De Serres G, et al. Vaccine effectiveness against lineage-matched and -mismatched influenza B viruses across 8 seasons in Canada, 2010–2011 to 2017–2018. *Clin Infect Dis* 2019; **68**: 1754–57.
- 103 Skowronski DM, Sabaiduc S, Leir S, et al. Paradoxical clade- and age-specific vaccine effectiveness during the 2018/19 influenza A(H3N2) epidemic in Canada: potential imprint-regulated effect of vaccine (I-REV). *Euro Surveill* 2019; **24**: 1900585.
- 104 Skowronski DM, Leir S, Sabaiduc S, et al. Influenza vaccine effectiveness by A(H3N2) phylogenetic sub-cluster and prior vaccination history: 2016–17 and 2017–18 epidemics in Canada. *J Infect Dis* 2022; **225**: 1387–98.
- 105 Smithgall M, Vargas CY, Reed C, et al. Influenza vaccine effectiveness in a low-income, urban community cohort. *Clin Infect Dis* 2016; **62**: 358–60.
- 106 Song JY, Noh JY, Lee JS, et al. Effectiveness of repeated influenza vaccination among the elderly population with high annual vaccine uptake rates during the three consecutive A/H3N2 epidemics. *Vaccine* 2020; **38**: 318–22.
- 107 Syrjänen RK, Jokinen J, Ziegler T, et al. Effectiveness of pandemic and seasonal influenza vaccines in preventing laboratory-confirmed influenza in adults: a clinical cohort study during epidemic seasons 2009–2010 and 2010–2011 in Finland. *PLoS One* 2014; **9**: e108538.
- 108 Thompson MG, Li DK, Shifflett P, et al. Effectiveness of seasonal trivalent influenza vaccine for preventing influenza virus illness among pregnant women: a population-based case-control study during the 2010–2011 and 2011–2012 influenza seasons. *Clin Infect Dis* 2014; **58**: 449–57.
- 109 Thompson MG, Clippard J, Petrie JG, et al. Influenza vaccine effectiveness for fully and partially vaccinated children 6 months to 8 years old during 2011–2012 and 2012–2013: the importance of two priming doses. *Pediatr Infect Dis J* 2016; **35**: 299–308.
- 110 Valenciano M, Kissling E, Reuss A, et al. Vaccine effectiveness in preventing laboratory-confirmed influenza in primary care patients in a season of co-circulation of influenza A(H1N1)pdm09, B and drifted A(H3N2), I-MOVE Multicentre Case-Control Study, Europe 2014/15. *Euro Surveill* 2016; **21**: 30139.
- 111 Zhang L, Yang P, Thompson MG, et al. Influenza vaccine effectiveness in preventing influenza illness among children during school-based outbreaks in the 2014–2015 season in Beijing, China. *Pediatr Infect Dis J* 2017; **36**: e69–75.

- 112 Zhang L, Pan Y, Hackert V, et al. The 2015–2016 influenza epidemic in Beijing, China: unlike elsewhere, circulation of influenza A(H3N2) with moderate vaccine effectiveness. *Vaccine* 2018; **36**: 4993–5001.
- 113 Zhang L, van der Hoek W, Krafft T, et al. Influenza vaccine effectiveness estimates against influenza A(H3N2) and A(H1N1)pdm09 among children during school-based outbreaks in the 2016–2017 season in Beijing, China. *Hum Vaccin Immunother* 2020; **16**: 816–22.
- 114 Zimmerman RK, Nowalk MP, Chung J, et al. 2014–2015 influenza vaccine effectiveness in the United States by vaccine type. *Clin Infect Dis* 2016; **63**: 1564–73.
- 115 Skowronski DM, Chambers C, Sabaiduc S, et al. Integrated sentinel surveillance linking genetic, antigenic, and epidemiologic monitoring of influenza vaccine-virus relatedness and effectiveness during the 2013–2014 influenza season. *J Infect Dis* 2015; **212**: 726–39.
- 116 Linderman SL, Chambers BS, Zost SJ, et al. Potential antigenic explanation for atypical H1N1 infections among middle-aged adults during the 2013–2014 influenza season. *Proc Natl Acad Sci USA* 2014; **111**: 15798–803.
- 117 Barr IG, Russell C, Besselaar TG, et al. WHO recommendations for the viruses used in the 2013–2014 Northern Hemisphere influenza vaccine: epidemiology, antigenic and genetic characteristics of influenza A(H1N1)pdm09, A(H3N2) and B influenza viruses collected from October 2012 to January 2013. *Vaccine* 2014; **32**: 4713–25.
- 118 Cowling BJ, Perera RAPM, Valkenburg SA, et al. Comparative immunogenicity of several enhanced influenza vaccine options for older adults: a randomized, controlled trial. *Clin Infect Dis* 2020; **71**: 1704–14.
- 119 Gouma S, Zost SJ, Parkhouse K, et al. Comparison of human H3N2 antibody responses elicited by egg-based, cell-based, and recombinant protein-based influenza vaccines during the 2017–2018 season. *Clin Infect Dis* 2020; **71**: 1447–53.
- 120 Wang W, Alvarado-Facundo E, Vassell R, et al. Comparison of A(H3N2) neutralizing antibody responses elicited by 2018–2019 season quadrivalent influenza vaccines derived from eggs, cells, and recombinant hemagglutinin. *Clin Infect Dis* 2021; **73**: e4312–20.
- 121 Izurieta HS, Chillarige Y, Kelman J, et al. Relative effectiveness of cell-cultured and egg-based influenza vaccines among elderly persons in the United States, 2017–2018. *J Infect Dis* 2019; **220**: 1255–64.
- 122 DeMarcus L, Shoubaki L, Federinko S. Comparing influenza vaccine effectiveness between cell-derived and egg-derived vaccines, 2017–2018 influenza season. *Vaccine* 2019; **37**: 4015–21.
- 123 Klein NP, Fireman B, Goddard K, et al. Vaccine effectiveness of cell-culture relative to egg-based inactivated influenza vaccine during the 2017–18 influenza season. *PLoS One* 2020; **15**: e0229279.
- 124 Auladell M, Phuong HVM, Mai LTQ, et al. Influenza virus infection history shapes antibody responses to influenza vaccination. *Nat Med* 2022; **28**: 363–72.
- 125 Ainslie KEC, Riley S. Is annual vaccination best? A modelling study of influenza vaccination strategies in children. *Vaccine* 2022; **40**: 2940–48.
- 126 Mosterin Höpping A, McElhaney J, Fonville JM, Powers DC, Beyer WEP, Smith DJ. The confounded effects of age and exposure history in response to influenza vaccination. *Vaccine* 2016; **34**: 540–46.
- 127 WHO. Recommended composition of influenza virus vaccines for use in the 2022 southern hemisphere influenza season. Sept 24, 2021. <https://www.who.int/publications/m/item/recommended-composition-of-influenza-virus-vaccines-for-use-in-the-2022-southern-hemisphere-influenza-season> (accessed June 1, 2022).
- 128 Paules CI, Sullivan SG, Subbarao K, Fauci AS. Chasing seasonal influenza—the need for a universal influenza vaccine. *N Engl J Med* 2018; **378**: 7–9.