

Georgia State University

ScholarWorks @ Georgia State University

Biology Honors Theses

Department of Biology

Winter 12-5-2022

Impact of ethanol on regulated cell death Crithidia Fasciculata

Morgan McCraw

Follow this and additional works at: https://scholarworks.gsu.edu/biology_hontheses

Recommended Citation

McCraw, Morgan, "Impact of ethanol on regulated cell death Crithidia Fasciculata." Thesis, Georgia State University, 2022.

https://scholarworks.gsu.edu/biology_hontheses/10

This Thesis is brought to you for free and open access by the Department of Biology at ScholarWorks @ Georgia State University. It has been accepted for inclusion in Biology Honors Theses by an authorized administrator of ScholarWorks @ Georgia State University. For more information, please contact scholarworks@gsu.edu.

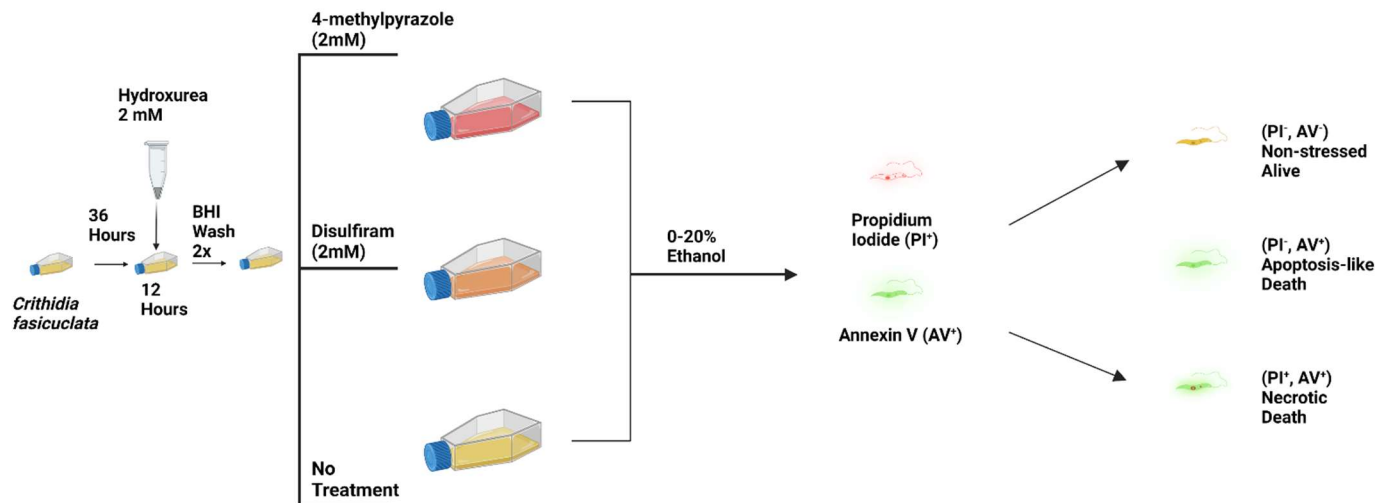
2022

Impact of ethanol on regulated cell death *Crithidia fasciculata*

MORGAN MCCRAW

FACULTY ADVISOR: PAUL ULRICH

FALL 2022



Abstract

Given the early divergence of trypanosomatids in evolution and absence of genes central to “classical” cell death pathways, induction, and mechanisms of regulated cell death in these species will shed light on origin of these processes. The early divergence of eukaryotic cells can be observed with the Trypanosomatids taxa (Green, 2015)

Crithidia fasciculata is a trypanosomatid, mosquito parasite. We explored sensitivity of *Crithidia* to ethanol ($\leq 20\%$) on cell death and externalization of phosphatidylserine (PS) using propidium iodide (PI) and annexin V-FITC (AV). While 20% ethanol killed cells necrotically (PI⁺/AV⁺), 9% ethanol resulted elicited nonlethal, PS externalization in a subset (2%) of the population (PI⁻/AV⁺). To elucidate the mechanism of this cell death-like phenotype, alcohol dehydrogenases (ADH) and aldehyde dehydrogenases (ALDH) were inhibited. I hypothesized inhibition of (ALDH) with disulfiram will increase proportion of stressed, alive cells (PI⁻/AV⁺) because of (ALDH) is used to process acetaldehyde with the enzyme (ALDH) that produces acetate that is used in many metabolic processes. While disulfiram yielded an increase in this subset of cells, effects of inhibition were ethanol independent. In contrast, the (ADH) inhibitor 4- methyl pyrazole caused necrosis. The different patterns of cellular death can be observed by the different staining. These results suggest cell death pathways are sensitive to fermentation products produced by trypanosomatids and that early evolution of “classical,” cell death pathways could have been driven by responses to sublethal stress.

Introduction

Cell death, or cessation of the metabolic processes of cell, can occur by various, regulated pathways (Shen, 2000). In this study we look at the relationship of ethanol to apoptosis-like cell in *C. fasciculata*. Ethanol-induced cell death is dose-dependent and is known to induce apoptosis in animal cells (Cardoso, 1983). Yeast experience evidence of apoptosis-like cell death from exposure to ethanol (Ishemgulova, 2017). Because ethanol causes dose dependent apoptosis cell death in both yeast and animal cells and *C. fasciculata* is from an early divergent branch in the evolutionary tree. Apoptosis is the most well studied of the regulated pathways, but there is no apoptosis causing genetic material present in trypanosomatids (Gerasimov, 2019). Trypanosomatid autophagy is well established, but alternative pathways and biological significance remain mysterious (Gerasimov, 2019).

Crithidia fasciculata is a trypanosomatid parasite non-pathogenic to humans that can be safely used as a model to understand novel cell death pathways. The parasite *C. fasciculata* is monoxenous living only a single host: mosquitoes (Ho, 2021). Mosquitoes go through major life stages of eggs, larva, pupa, and adult. *Crithidia fasciculata* is acquired by the larva stage in water other infected mosquitoes live around. With each molting which occurs around three times the hindgut lining is shed as well as all the *C. fasciculata* located in the hindgut (Schneider, 2012). Once mosquitoes reach the adult stage in the life cycle *C. fasciculata* will remain in the hindgut, rectum, and papillae rectum until death occurs for the adult mosquito. *Crithidia fasciculata* can replicate exponentially in the host mosquito so in this study it is proposed that the ethanol that is produced as a major by-product of the metabolic pathway of the Krebs cycle is used as a regulatory molecule to halt mitosis.

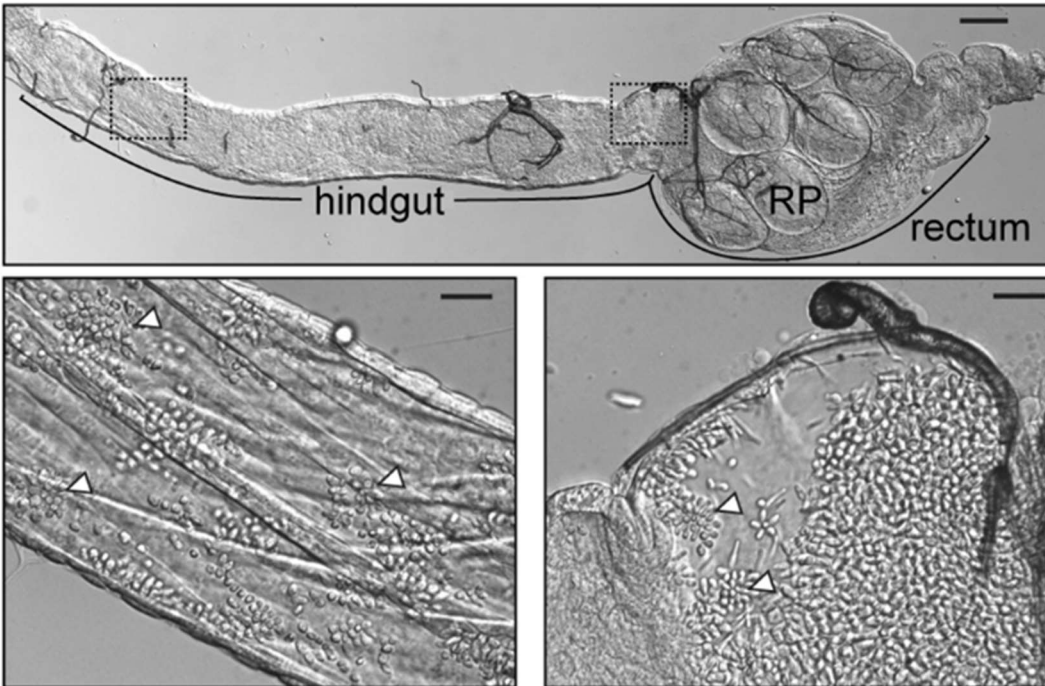


Figure 1 *Crithidia fasciculata* adheres to the mosquito hindgut, rectum, and rectal papillae (RP). As shown in the images above *Crithidia fasciculata* adhering inside *Aedes aegypti*. The author indicates adherence with the white arrow heads. Scale bar is 100 μm (Filosa, 2019).

Crithidia fasciculata has a dose-dependent relationship with ethanol. Carbohydrate metabolism processes observed in (figure 2) yields ethanol from pyruvate via the enzyme alcohol dehydrogenase (Castilla, 2004). In *C. fasciculata*, acetaldehyde is converted to ethanol using (ALDH). Alcohol can then be consumed using the enzyme (ALDH) to acetaldehyde. Acetaldehyde is converted to acetate via acetaldehyde dehydrogenase. Acetate is widely used in metabolism via derivatives like acetyl coenzyme or fatty acids (figure 2). One of the end pathways pyruvates take in *C. fasciculata* from (Aldehyde Dehydrogenase – Alcohol Metabolism). *Crithidia fasciculata* uses (ADH) to oxidize NADH via a redox reaction. Alcohol dehydrogenase in yeast have similar amino acid sequences, reactions to thiols, and reactions to gel filtrations to (ADH) in *C. fasciculata*. However, *C. fasciculata* (ADH) and (ALDH) is considered more efficient at NADH

oxidation because it has a lower K_m value than yeast so less cofactors are required for the enzymes (Castilla, 2004). Ethanol is produced and processed in *C. fasciculata*. Using inhibitors can demonstrate on how various parts of the metabolic process interact with signaling cell death pathways with the addition of ethanol as well as how does this impact mitosis and growth.

When considering an appropriate inhibitor that is used to inform about the various metabolic pathways that specifically targets the enzymes (ADH) and (ALDH). Disulfiram inhibits human and yeast acetaldehyde dehydrogenase (Schindelin, 2012) because it has a higher binding affinity than acetate. The use of disulfiram has yet to be used for *C. fasciculata* and inhibiting (ALDH). Acetaldehyde dehydrogenase is like the human enzyme from the amino acid sequences, and it is a variety of enzymes (Rieger, 2011). The inhibitor 4-methylpyrazole is also successful at inhibiting class I (ADH) oxidation of ethanol (Kitagaki, 2007).

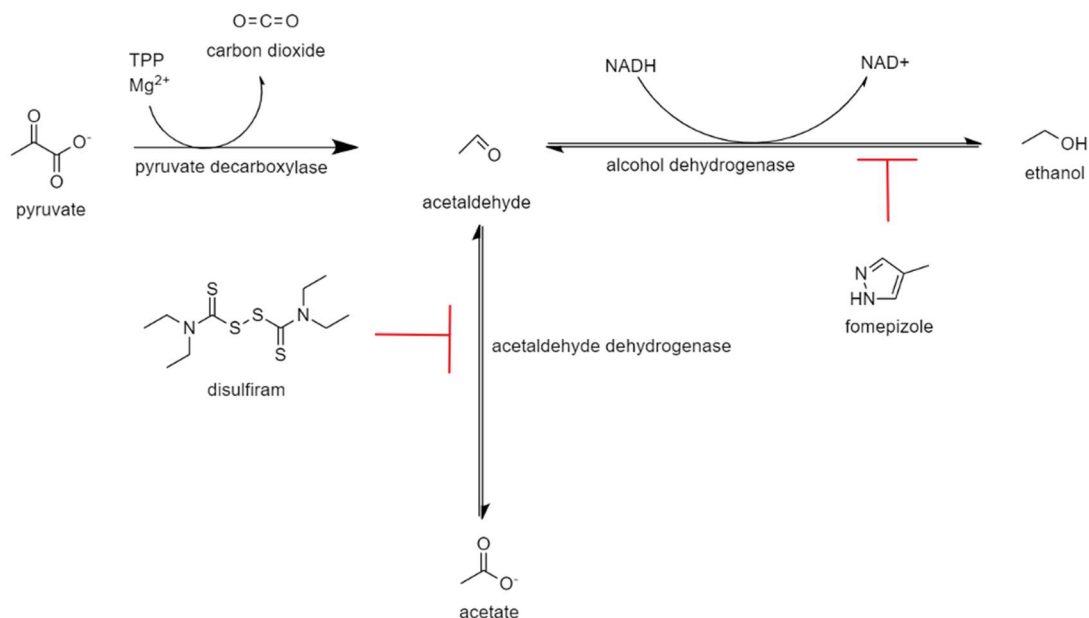


Figure 2. Metabolism of acetate and ethanol. Disulfiram and 4-methyl pyrazole inhibitors are included.

Common laboratory protocols rely on necrotically killing cells with 70% ethanol, but lower concentrations may cause less traumatic, regulated cell death or differentiation processes. Ethanol slows growth of *C. fasciculata*, growth rate resumes after 9 days with a treatment of 2% ethanol (Cazzulo, 1985). A stress mechanism is the *ZC3H30* gene in *Trypanosoma brucei*, an RNA-binding protein. This RNA binding protein when knocked out of *Trypanosoma brucei* and was exposed to only 1% ethanol for an hour, a change in the replication time of the cells was observed (Cevallos, 2017). This is believed to cause a stress related response that could eventually lead to the understanding of how apoptosis-like cell death occurs. This gene is identified in *C. fasciculata* (carter).

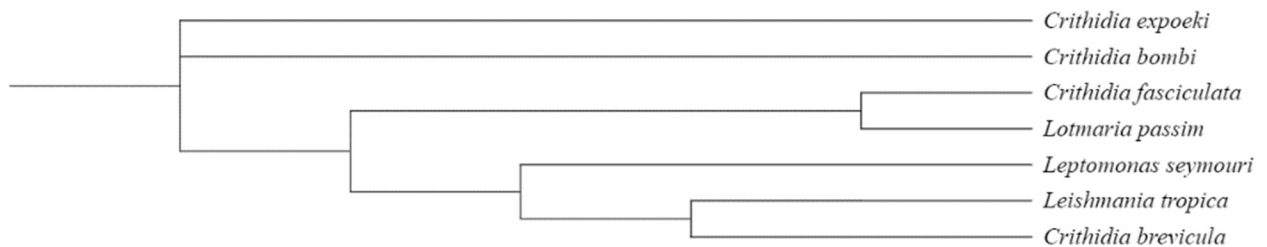


Figure 3. The phylogenetic tree shows the early splitting of the heteroxenous and the monoxenous parasites. Using 18S rRNA to compile the phylogenetic tree.

Methods and Materials

Cell Culture

Crithidia fasciculata (ATCC 11745) was incubated in (BHI, BD BBL™ Brain Heart Infusion) brain heart infusion media containing hemin (2.5 $\mu\text{g mL}^{-1}$) and penicillin-streptomycin (diluted 1:100, Corning®). Experiments were all started using 5 mL cell cultures at a density of 10^6 cells mL^{-1} and grown in a shaking incubator at 27°C. Maintenance cultures were passed every five days at a starting density of 10^6 cells mL^{-1} . Cell lines only existed for 1 month before proper disposal and new cells were unfrozen.

Optimizing Cell Culture Synchronization

Synchronization of cell cycle with hydroxyurea ensures that experiments are performed with a population that remains in the same replication cycle of *C. fasciculata*. Optimal conditions were determined for hydroxyurea exposure time. Cells were incubated in 2mM hydroxyurea for 12 hours before washing twice with fresh BHI. Vortexing during each wash step breaks up the pellet. Additionally, BHI should be added to resuspend the washed cells to a final volume of 5 mL. Cell density doubles every ~4 hours following removal of hydroxyurea.

Stress and death caused by ethanol

Phosphatidylserine (PS) externalization is an indicator of apoptosis in mammalian cells (Aldehyde Dehydrogenase, 2012). This was assayed in *C. fasciculata* using FITC-labeled annexin V (BD Pharmingen™). Prior to exploring the impact of ethanol on cell death, positive and negative

controls for (AV) staining were performed using a thermal stress protocol developed previously in our laboratory (unpublished results). Briefly, 100 μL of cells were warmed to 62 $^{\circ}\text{C}$ for 30 minutes in a water bath (positive control), followed by cooling in an ice bath for 5 minutes. Cells without heat shock were used as a negative control. Using (PI) to identify dead cells and (AV) to see if any cells experience apoptosis. Fluorescence of (AV) ($\lambda_{\text{excitation}} = 560\text{nm}$; $\lambda_{\text{emission}} = 595\text{nm}$) and propidium iodide ($\lambda_{\text{excitation}} = 535\text{nm}$; $\lambda_{\text{emission}} = 615\text{nm}$) results were measured using an epifluorescence microscope (Zeiss Axio Imager.A1). All cells in the thermal treatment were (AV^+/PI^+) necrotic. Imaging settings were carefully controlled. An exposure time of 65ms and gain of 4.1 were used for phase contrast and propidium iodide. Annexin V-FITC was imaged with exposure time of 135ms and a gain of 4.1.

Crithidia fasciculata is a parasite that is from an early branching of the eukaryotes. Ethanol causes a dose dependent cell death that in lower concentrations causes an apoptosis-like cell death and in higher concentration necrosis occurs. This is investigating how does ethanol impact apoptosis-like cell death using the inhibitors of (ADH) and (ALDH) which are a part of different parts of the metabolic pathway. For ethanol treatment, a stock solution of 90mL of BHI with a cell density of 10^6 cells mL^{-1} . The stock solution was divided equally into eighteen flasks. Cell cultures were incubated at 27 $^{\circ}\text{C}$ with shaking for 36 hours. Triplicate flasks were treated with 0% (negative control), 9%, and 20% ethanol (positive control). In concert with fluorescence imaging, density of cultures was measured. If needed to ensure sufficient number of cells in a field of view, sample density was adjusted to a density of 10^7 mL^{-1} . Cells were washed twice in 90 μL PBS. For each wash, cells were centrifuged at 2500 rpm at 20 $^{\circ}\text{C}$ for 5 minutes, supernatant was removed, cells resuspended in 90 μL of (AV)binding buffer, and vortexed for 5 seconds. Cells were stained at a final concentration of 1.5 μM propidium iodide and by addition of 10 μL (AV) Prior to imaging,

cells rested for 20 minutes. Image analysis was conducted using ImageJ and GraphPad version 9.0.0 for Windows, GraphPad Software, San Diego, California USA, www.graphpad.com. to obtain percentage of necrotic cells (PI⁺, AV⁺) as a function of the total. Data were analyzed using a one-factor ANOVA test and t-tests for the impact of varying ethanol concentrations and the interaction on the measured cell death.

Observing stressed and dead cells from varying doses of ethanol

Synchronized cells at 36 hours of cell incubation in standard conditions were treated with 100 μ M disulfiram. with resuspension during the final wash. Cells were then returned to the incubator for an hour. After pretreatment with disulfiram, ethanol was added to 9% or 20%. No ethanol was added to the negative control flasks (0% ethanol). Cells were incubated three hours after addition of ethanol.

During the incubation period, cell density was assessed so treated cells could ultimately be resuspended to a final density of 10^7 mL⁻¹. The cells are transferred to a microfuge tube. The cells were then washed with 10 μ L 1xPBS and centrifuged at $1,200 \times g$ for 5 minutes at 21°C twice with the supernatant removed. Added to the solution of washed cells is 90 μ L of 1x (AV) binding buffer (freshly prepared) is then vortexed in the microfuge tubes to break up the pellet of cells. Then 90 μ L was removed and added to a new microfuge tube. Propidium Iodide with a final concentration of 1.5:100 concentration is added to the tubes. Then 1:10 concentration of (AV) is added to the tubes and set in a dark drawer for 20 minutes. The slides are prepared in a dark microscope room to avoid light bleaching, which is very common for (AV).

Images were analyzed with ImageJ (37). Pre-processing of all images was performed by adjusting the threshold using Otsu's threshold clustering algorithm or commonly referred to as OTSU, selecting a threshold, smoothing, and conversion to binary. The resulting black-and-white images are inverted to have the cells be black on a white background. Then the images are analyzed using an algorithm that recognizes a binary object that is present in contrast to the background with the pixel range set to 10-250 that can identify and measure the pixels that are different. Masking the cell images ensures all the cells are counted appropriately.

```
@Article{otsu79,
  author = "N. Otsu",
  title = "A threshold selection method from gray level
          histograms",
  journal = "{IEEE} Trans. Systems, Man and Cybernetics",
  year = "1979",
  volume = "9",
  pages = "62--66",
  month = mar,
  keywords = "threshold selection",
  note = "minimize inter class variance",
}
```

Disulfiram, 4- methyl pyrazole, and Ethanol

The cells are started with the density of 10^6 cells mL⁻¹ in BHI media in the shaken incubator at 27°C, which is the standard condition in triplicates. After 36 hours, the cells were grown and synchronized using 2mM hydroxyurea for 12 hours, then washed twice with fresh BHI. Cells were grown in incubation in standard conditions. Disulfiram is added to the nine designated flasks; the final concentration is 2mM in each flask, while the cells are in the falcon tubes during the rinses. Then .83 µl of the liquid 4-methyl pyrazole is added to nine designated flasks. The final

concentration of each 5mL flask with 4-methyl pyrazole added is 2 mM. The cells are added to the flasks and then returned to the incubator for an hour. After the hour, the ethanol 9% and 20% concentrations are added to the appropriate flasks. Then the three hours wait occurs.

During the three-hour wait, the cells are counted using a hemocytometer to calculate the concentrations, so the cell density used for staining is 10^7 . The cells are transferred to a microtube. The cells are then washed with $10\mu\text{L}$ 1xPBS and centrifuged at $1,200 \times g$ for 5 minutes at 21°C twice with supernatant being removed. Then $90\mu\text{L}$ of freshly made 1x (AV) binding buffer is then vortexed in the microtubes to break up the pellet of cells. Remove $90\mu\text{L}$ to a new microtube. Propidium iodide with a final concentration of $1.5\mu\text{M}$ is added to the tubes. Then $10\mu\text{L}$ of (AV) is added to the tubes, and then they are set in a dark drawer for 20 minutes. In a dark microscope room, the slides are prepared to avoid light bleaching, which is very common for (AV).

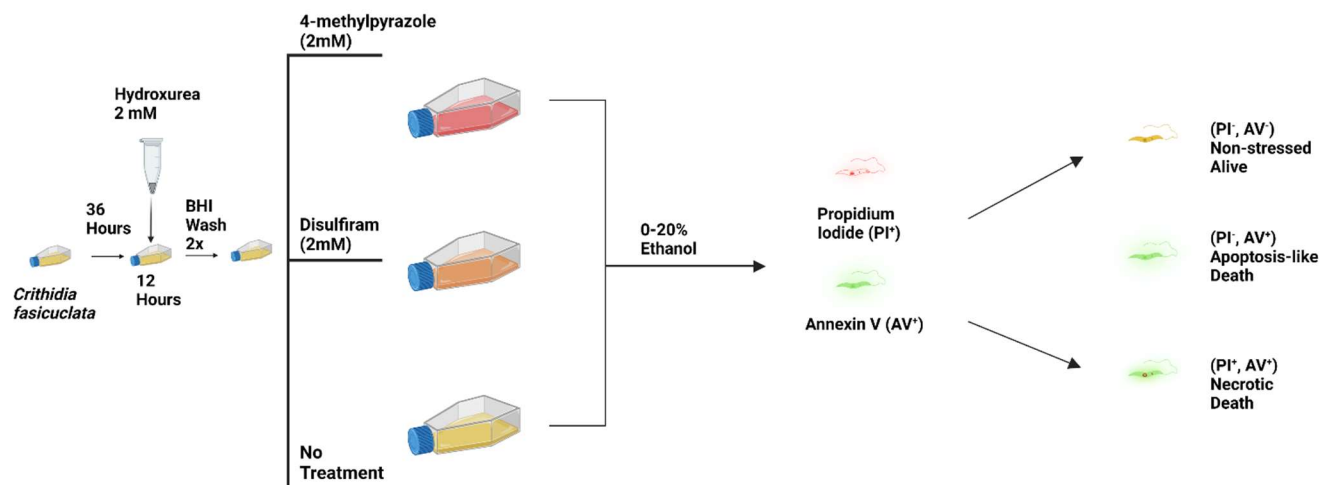


Figure 4. The role of ethanol metabolism in cell death of *Crithidia fasciculata* was assessed in a two-way design utilizing ethanol and inhibitors of pathways of ethanol metabolism.

Results

Synchronization of cell cultures was achieved using 2 mM hydroxyurea. (AV) shows the PS-binding protein flipped to the outside of the membrane when the cells are stressed, about to die, or died, which propidium iodide can indicate by penetrating the membrane (PLOS, 2014). Living cells are able to exclude PI from the cell and are (PI⁻). However, the externalized phosphatidylserine indicates that the cells are in a stressed state.



Figure 5. These cells above are synchronized with 2mM hydroxyurea. Cytokinesis can be observed in cells by the presence of separatory anchor ends. By observing morphological changes that mitosis is occurring in synchronous with the surrounding cells with the final step of cytokinesis can be observed.

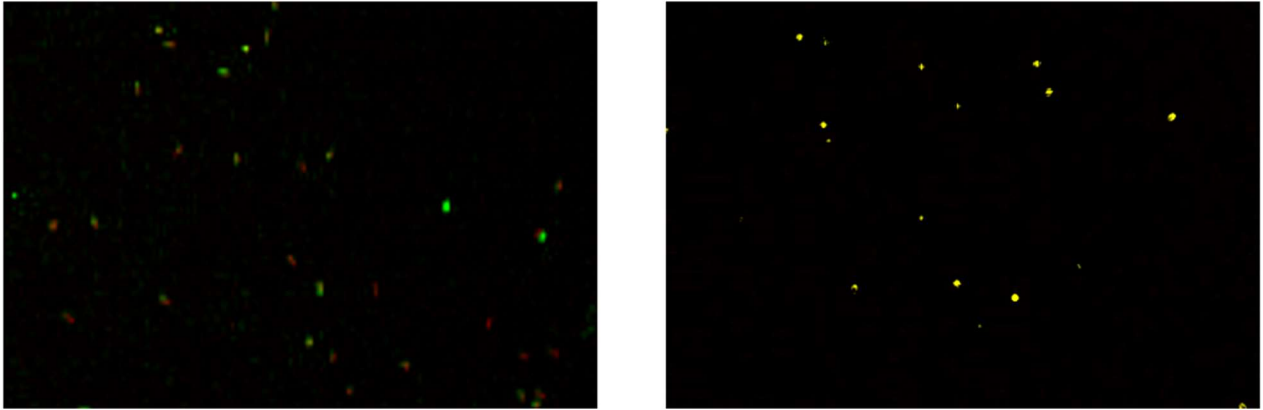


Figure 6. Cells that die necrotically stain for both PI and AV. (A) Cells heated to 62 °C for 30 minutes. (B) Control cells not exposed to high temperatures. *Red*, propidium iodide. *Green*, annexin V-FITC.

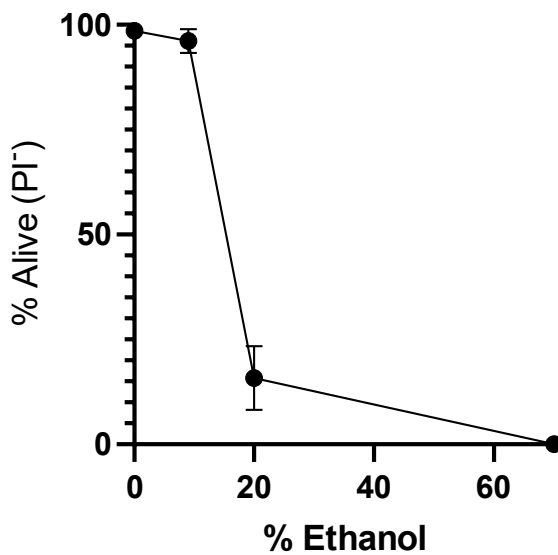


Figure 7. LC₅₀ graph of varying concentrations of ethanol with *C. fasciculata*. After 3 hours of exposure to varying concentrations of ethanol the calculated LC₅₀ is 15.17%. The formula below is how the curve is calculated for the LC₅₀ graph.

$\ln(\text{Odds}) = 0 = \beta_0 + \beta_1 * X$, we can solve for X:

$$\beta_0 + \beta_1 * X = 0$$

$$\beta_1 * X = -\beta_0$$

$$X = -\beta_0 / \beta_1$$

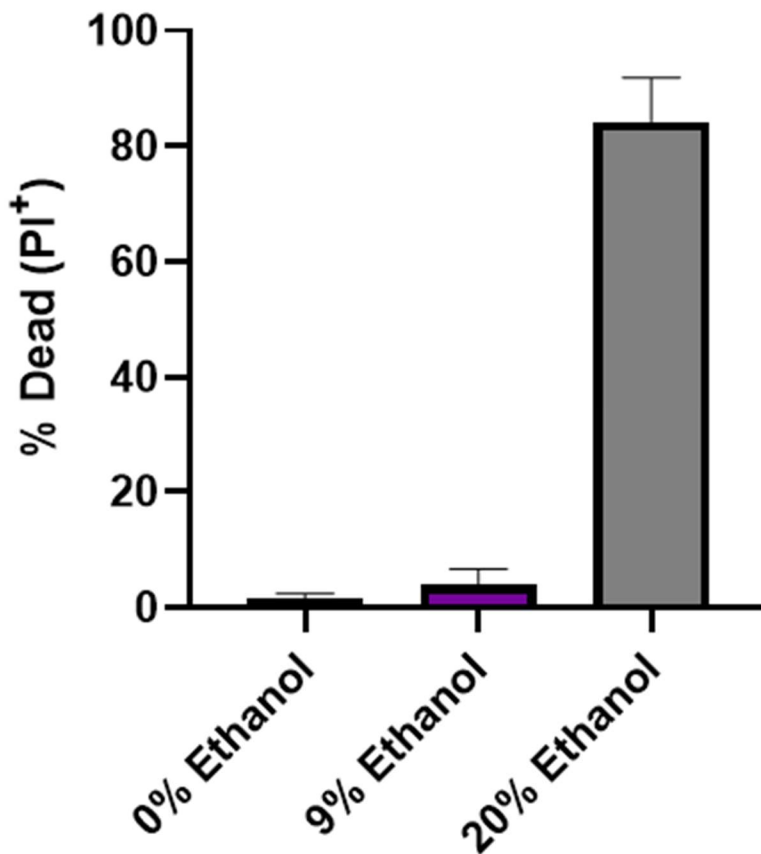


Figure 8. Cell death significantly increases at 20% ethanol. *Crithidia fasciculata* when exposed to varying concentrations of ethanol when a one-way anova is performed it shows significance of $P < 0.0001$.

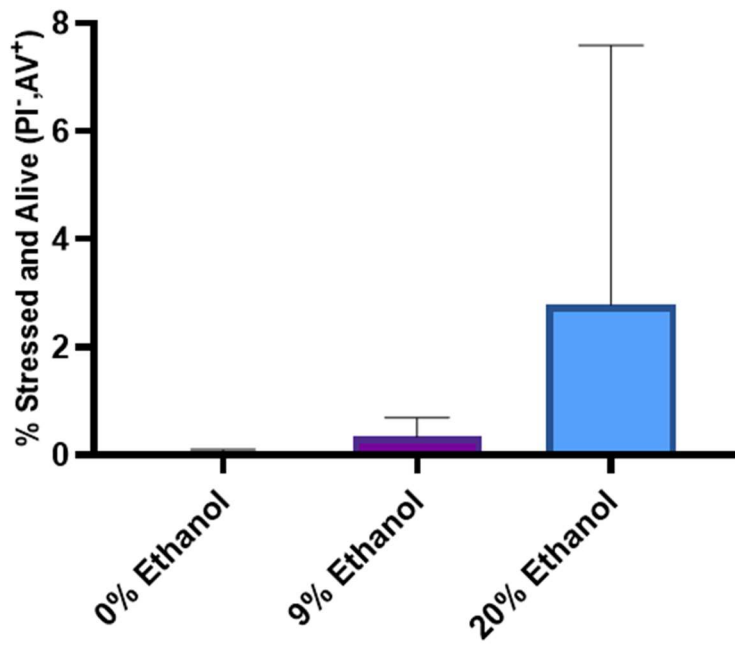


Figure 9. Using varying concentrations of ethanol with synchronized cells after 3 hours of exposure. One-way anova showed differences were marginally significant ($p=.0547$, ANOVA, $n=3$).

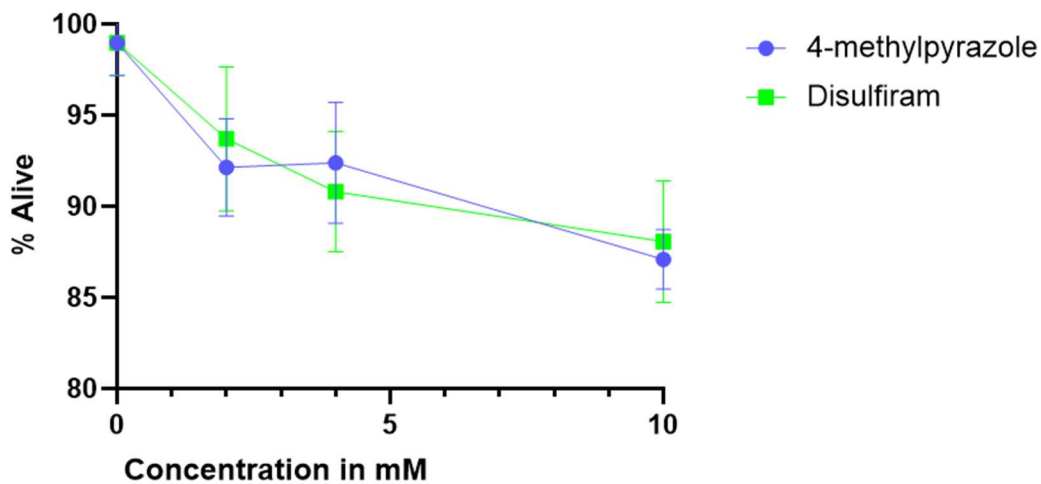


Figure 10. The lethal concentrations of Disulfiram at 2mM 4mM, and 10mM. Disulfiram and 4-methyl pyrazole (2-10 mM) only kills around 10% of *C. fasciculata* with 4 hours of treatment.

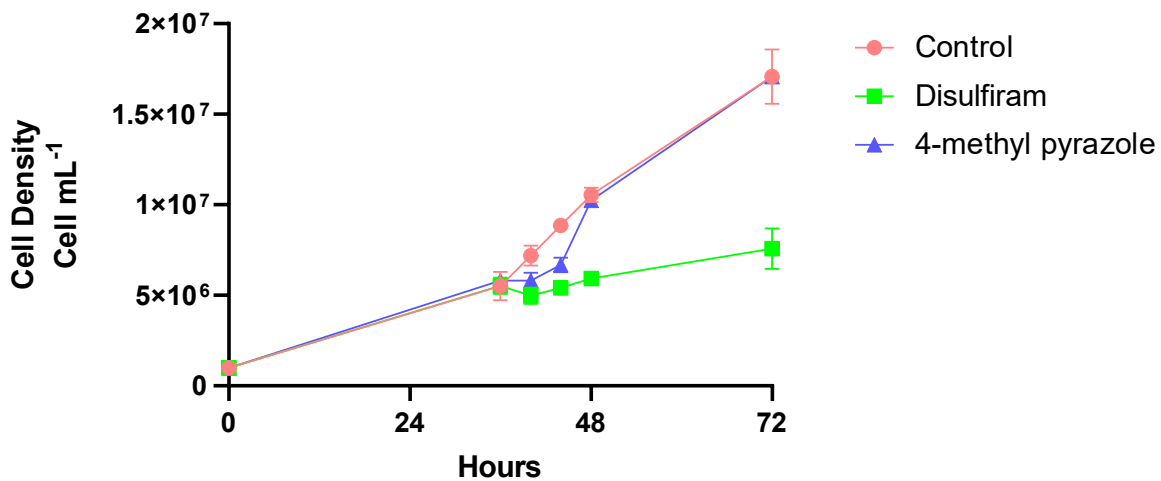


Figure 11. The growth curves of the inhibitor's disulfiram and 4- methyl pyrazole compared to a negative control. There is a 12 hour delay in the growth curve after the introduction of 4-methyl pyrazole.

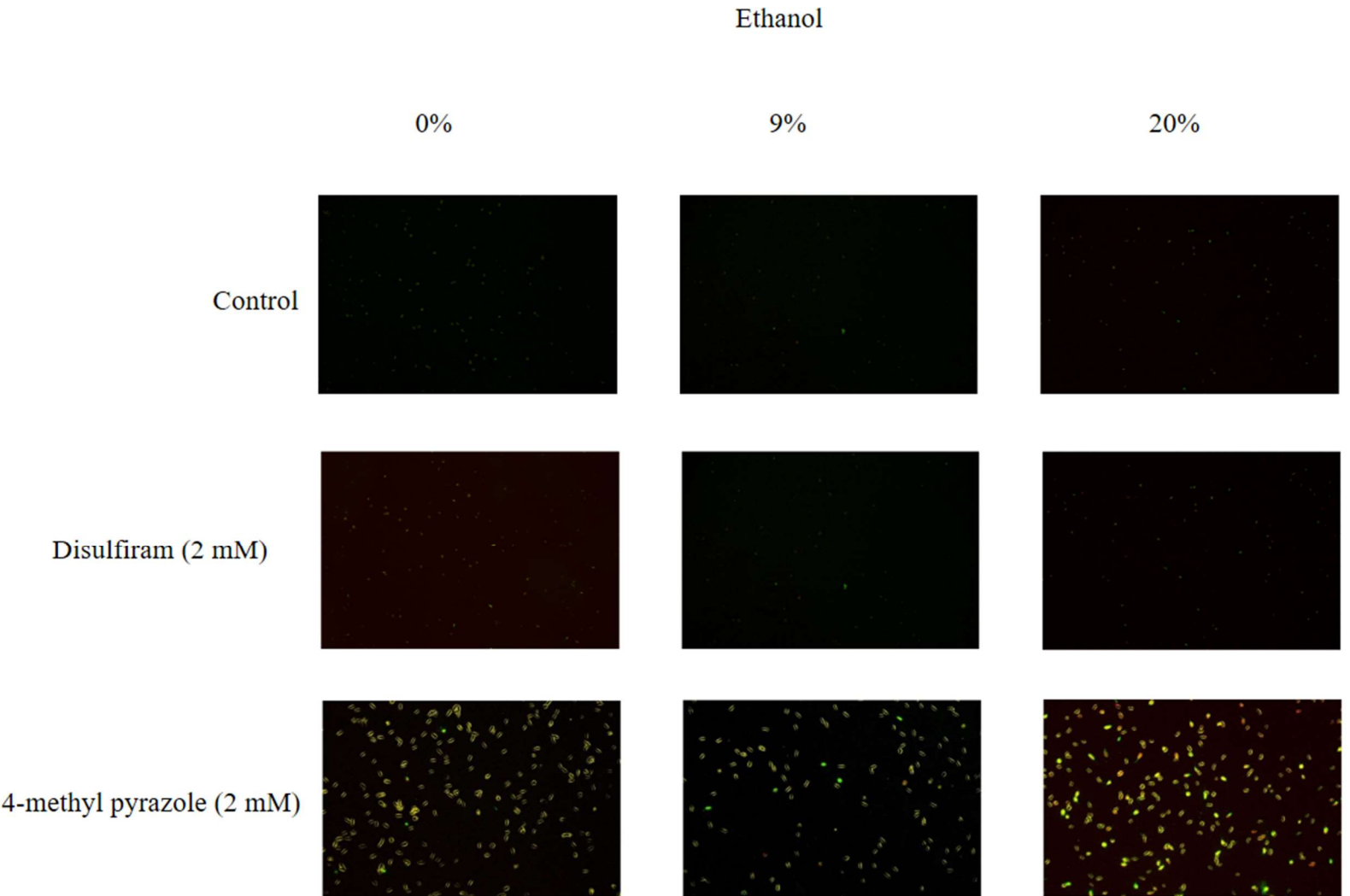


Figure 12 The (AV⁺) cells are located on the left and the propidium positive cells are on the left of each image. The treatments are listed above the corresponding images. Samples viewed

under (AV) had an exposure time of 350 and gain of 4.9. Propidium iodide was viewed at an exposure time of 65 and gain of 4.9.

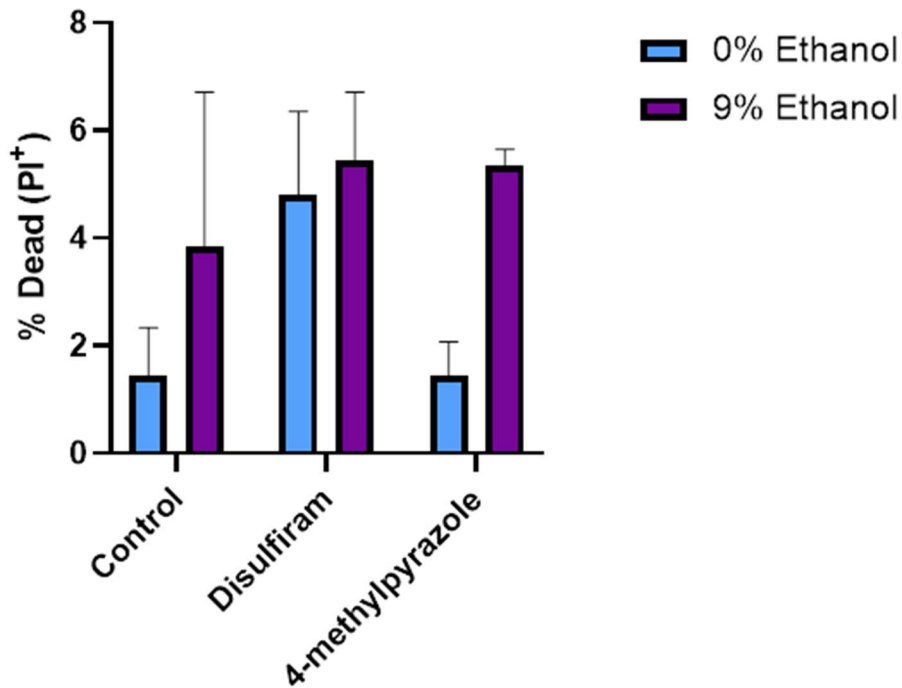


Figure 13. With a lower amount of cell death. Disulfiram 2 mM with no ethanol had more cell death than the control and 4-methyl pyrazole 2 mM. A t-test shows no significant difference caused from 9% ethanol ($p=0.1324$).

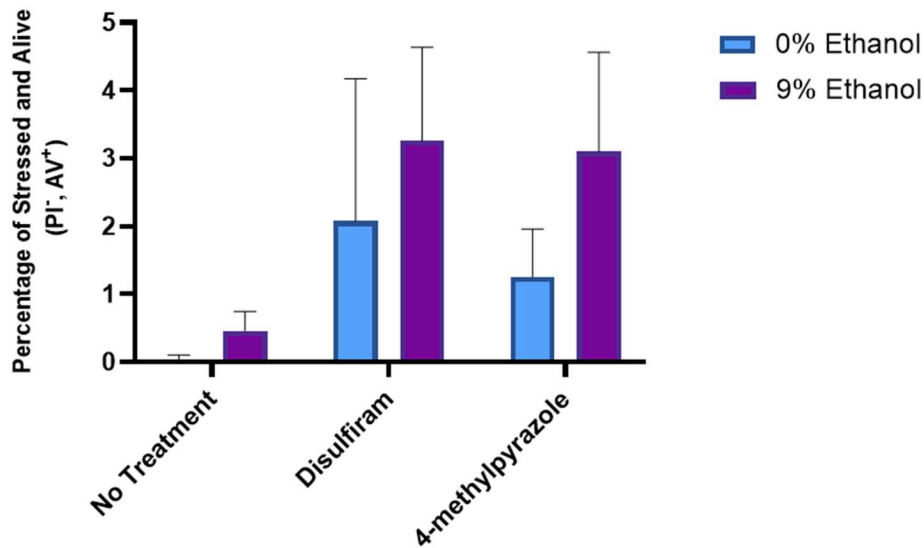


Figure 14. There is a greater amount of stressed and alive cells with inhibitors 4-methyl pyrazole 2 mM and disulfiram 2 mM than the negative control cells. A t-test showed ethanol had no significance ($p=0.1923$). Disulfiram and 4-methyl pyrazole had similar percentage of stressed and alive cultures (PI-, AV⁺) and both was a greater amount then control with less than 1% of stressed and alive cultures.

Discussion

Ethanol does cause apoptosis-like cell death in *C. fasciculata* also when treated with disulfiram that inhibits the enzyme (ADLH) also cells that are treated with 4-methyl pyrazole. The purpose of these experiments is to help identify reliable ways of inducing a unique cell death pathway called apoptosis-like cell death in *C. fasciculata*. This is important because this a single celled organism that can undergo an apoptosis-like cell death process. The apoptosis-like cell death is observed at exposure to low concentrations of ethanol (Figure 9). *Crithidia fasciculata* produces ethanol as an offshoot of the metabolic pathway (Castilla, 2004). The slight increase in cell death compared to the negative control cells can also be observed in the LC₅₀ graph (figures 13 and 10). There is a low amounts of cell death around 10% in the graphs with the addition of ethanol. It is an interesting finding that is likely related to disulfiram impacting more than just the acetate not being broken down.

A mere 1% of ethanol causes a delay in the growth curve and yet one of the byproducts of its metabolic pathway is producing ethanol (Cevallos, 2017). There is a regulatory death pathway that has a dose dependent relationship with ethanol for 9% ethanol causing apoptosis-like cell death in 4-methyl pyrazole and disulfiram but when 20% ethanol is added necrosis is observed. Keep in perspective that the host is a mosquito, and *C. fasciculata* only get to occupy the hindgut, rectum, and rectal papillae (Filosa, 2019). Given it is such a small volume that is allowed and a limited supply of glucose, having a mechanism that signals to delay the rapid growth of *C. fasciculata*. Ethanol in small concentrations may temporarily slow the cell cycle, until ethanol has been processed, for the very possible greater survival of all *C. fasciculata* in the mosquito is just an evolutionary advantage.

Future projects that the findings of this paper can lead to is a way of reliably causing apoptosis-like cell death to be observed using 4-methylpyrazole or disulfiram and 9% ethanol to capture in detail the morphological changes of the apoptosis like cell death pathway, as well as leading to the discovery of the genes that activate the apoptosis-like cell death pathway. Thinking about the host of *C. fasciculata* there could be experiments that measure the amount of ethanol present and the amount of ethanol present and if there were behavioral changes because of the ethanol produced. This can all lead to a greater understanding of how the relationship of not just *C. fasciculata* but other trypanosomatids to the host insect.

Conclusion

Apoptosis-like cell death may have appeared early in evolution, and investigation of early diverging lineages may inform our understanding of development of these pathways. Trypanosomatids belong to an ancient lineage that lacks classical apoptosis genes yet present apoptosis-like phenotypes in response to low ethanol concentrations (Gerasimov, 2019). Additionally, inhibition of (ADH) induces a 12 hour delay in growth rate and drastically increased back to the growth rate of the cultures exposed to 4-methyl pyrazole. Yet inhibition of (ALDH) showed a greater amount of cell death, stressed and alive cells, and a delay in the growth curve that after 36 hours of exposure to disulfiram is still delayed (figure 11). Inhibition of (ADH) and (ALDH) appear to drive cell death through a path independent of ethanol, suggesting that cell death observed in the presence of ethanol may represent an alternative mechanism at work (Castilla, 2004). Varying concentrations of ethanol causes a variety of regulated cell death pathways. Because lower concentrations of 9% ethanol are shown to cause apoptosis-like cell death and 20% ethanol causes necrosis in *C. fasciculata*.

Ethanol is a byproduct of the major metabolic pathway (Cevallos, 2017). Mosquitos are the host of *C. fasciculata* and the limited space of the hindgut, rectum, and rectum papillae. In order to not overwhelm the host and killing the mosquito *C. fasciculata* possibly uses the byproduct of ethanol to slow the growth rate (Cevallos, 2017). These experiments help peel back the curtain just a little bit about the possible development of apoptosis that our human cells do every day.

References

- 4 Methylpyrazole - an overview* | *ScienceDirect Topics*. (n.d.). Retrieved July 6, 2022, from <https://www.sciencedirect.com/topics/medicine-and-dentistry/4-methylpyrazole>
- Alcolea, P. J., Alonso, A., García-Tabares, F., Toraño, A., & Larraga, V. (2014). An Insight into the Proteome of *Crithidia fasciculata* Choanomastigotes as a Comparative Approach to Axenic Growth, Peanut Lectin Agglutination and Differentiation of *Leishmania* spp. Promastigotes. *PLOS ONE*, *9*(12), e113837. <https://doi.org/10.1371/journal.pone.0113837>
- Aldehyde Dehydrogenase – Alcohol Metabolism*. (n.d.). Retrieved July 27, 2022, from <https://sites.tufts.edu/alcoholmetabolism/the-biological-pathway/aldehyde-dehydrogenase/>
- An Insight into the Proteome of *Crithidia fasciculata* Choanomastigotes as a Comparative Approach to Axenic Growth, Peanut Lectin Agglutination and Differentiation of *Leishmania* spp. Promastigotes. (2014). *PLOS ONE*, *9*(12), e113837. <https://doi.org/10.1371/journal.pone.0113837>
- Bancos, I., Bida, J. P., Tian, D., Bundrick, M., John, K., Holte, M. N., Her, Y. F., Evans, D., Saenz, D. T., Poeschla, E. M., Hook, D., Georg, G., & Iii, L. J. M. (2013). High-Throughput Screening for Growth Inhibitors Using a Yeast Model of Familial Paraganglioma. *PLOS ONE*, *8*(2), e56827. <https://doi.org/10.1371/journal.pone.0056827>
- Basmaciyan, L., Azas, N., & Casanova, M. (2017). Calcein+/PI- as an early apoptotic feature in *Leishmania*. *PLOS ONE*, *12*(11), e0187756. <https://doi.org/10.1371/journal.pone.0187756>
- Bílý, T., Sheikh, S., Mallet, A., Bastin, P., Pérez-Morga, D., Lukeš, J., & Hashimi, H. (2021). Ultrastructural Changes of the Mitochondrion During the Life Cycle of *Trypanosoma brucei*. *Journal of Eukaryotic Microbiology*, *68*(3), e12846. <https://doi.org/10.1111/jeu.12846>

- Bouma, M. J., Snowdon, D., Fairlamb, A. H., & Ackers, J. P. (1998). Activity of disulfiram (bis(diethylthiocarbamoyl)disulphide) and ditiocarb (diethyldithiocarbamate) against metronidazole-sensitive and -resistant *Trichomonas vaginalis* and *Tritrichomonas foetus* [In Process Citation]. *Journal of Antimicrobial Chemotherapy*, *42*(6), 817–820.
<https://doi.org/10.1093/jac/42.6.817>
- Brackney, D. E., LaReau, J. C., & Smith, R. C. (2021). Frequency matters: How successive feeding episodes by blood-feeding insect vectors influences disease transmission. *PLOS Pathogens*, *17*(6), e1009590. <https://doi.org/10.1371/journal.ppat.1009590>
- Buendía-Abad, M., García-Palencia, P., de Pablos, L. M., Alunda, J. M., Osuna, A., Martín-Hernández, R., & Higes, M. (2022). First description of *Lotmaria passim* and *Crithidia mellificae* haptomonad stages in the honeybee hindgut. *International Journal for Parasitology*, *52*(1), 65–75. <https://doi.org/10.1016/j.ijpara.2021.06.005>
- Cardoso de Almeida, M. L., Allan, L. M., & Turner, M. J. (1984). Purification and properties of the membrane form of variant surface glycoproteins (VSGs) from *Trypanosoma brucei*. *The Journal of Protozoology*, *31*(1), 53–60. <https://doi.org/10.1111/j.1550-7408.1984.tb04289.x>
- Cardoso de Almeida, M. L., & Turner, M. J. (1983). The membrane form of variant surface glycoproteins of *Trypanosoma brucei*. *Nature*, *302*(5906), 349–352.
<https://doi.org/10.1038/302349a0>
- Carter, M., Gomez, S., Gritz, S., Larson, S., Silva-Herzog, E., Kim, H.-S., Schulz, D., & Hovel-Miner, G. (2020). A *Trypanosoma brucei* ORFeome-Based Gain-of-Function Library Identifies Genes That Promote Survival during Melarsoprol Treatment. *MSphere*, *5*(5), e00769-20.
<https://doi.org/10.1128/mSphere.00769-20>

- Castilla, R., González, R., Fouad, D., Fraga, E., & Muntané, J. (2004). Dual effect of ethanol on cell death in primary culture of human and rat hepatocytes. *Alcohol and Alcoholism (Oxford, Oxfordshire)*, 39(4), 290–296. <https://doi.org/10.1093/alcalc/agh065>
- Cazzulo, J. J., & Franke de Cazzulo, B. M. (1985). Pyruvate decarboxylase and alcohol dehydrogenase in the insect trypanosomatid, *Crithidia fasciculata*. *Comparative Biochemistry and Physiology Part B: Comparative Biochemistry*, 81(4), 1019–1022. [https://doi.org/10.1016/0305-0491\(85\)90106-3](https://doi.org/10.1016/0305-0491(85)90106-3)
- Cevallos, A. M., Herrera, J., López-Villaseñor, I., & Hernández, R. (2017). Differential Effects of Two Widely Used Solvents, DMSO and Ethanol, on the Growth and Recovery of *Trypanosoma cruzi* Epimastigotes in Culture. *The Korean Journal of Parasitology*, 55(1), 81–84. <https://doi.org/10.3347/kjp.2017.55.1.81>
- Chakraborty, C., & Clayton, C. (2018). Stress susceptibility in *Trypanosoma brucei* lacking the RNA-binding protein ZC3H30. *PLOS Neglected Tropical Diseases*, 12(10), e0006835. <https://doi.org/10.1371/journal.pntd.0006835>
- Creek, D. J., Vincent, I. M., & Barrett, M. P. (2013). Pharmacological Metabolomics in Trypanosomes. In T. Jäger, O. Koch, & L. Flohé (Eds.), *Trypanosomatid Diseases* (1st ed., pp. 37–56). Wiley. <https://doi.org/10.1002/9783527670383.ch3>
- Dawidek-Pietryka, K., Szczepaniak, S., Dudka, J., & Mazur, M. (1998). In vitro studies of human alcohol dehydrogenase inhibition in the process of methanol and ethylene glycol oxidation. *Archives of Toxicology*, 72(9), 604–607. <https://doi.org/10.1007/s002040050550>
- Diaz, F., & Komuniecki, R. (1995). Pyruvate dehydrogenase complex from the primitive insect trypanosomatid, *Crithidia fasciculata*: dihydrolipoyl dehydrogenase-binding protein has multiple

lipoyl domains. *Molecular and Biochemical Parasitology*, 75(1), 87–97.

[https://doi.org/10.1016/0166-6851\(95\)02498-0](https://doi.org/10.1016/0166-6851(95)02498-0)

Docampo, R., Cruz, F. S., Boveris, A., Muniz, R. P. A., & Esquivel, D. M. S. (1979). β -lapachone enhancement of lipid peroxidation and superoxide anion and hydrogen peroxide formation by Sarcoma 180 ascites tumor cells. *Biochemical Pharmacology*, 28(6), 723–728.

[https://doi.org/10.1016/0006-2952\(79\)90348-4](https://doi.org/10.1016/0006-2952(79)90348-4)

Ethanol Metabolism - Biochemistry - Medbullets Step 1. (n.d.). Retrieved July 27, 2022, from

<https://step1.medbullets.com/biochemistry/102041/ethanol-metabolism>

Filosa, J. N., Berry, C. T., Ruthel, G., Beverley, S. M., Warren, W. C., Tomlinson, C., Myler, P. J., Dudkin, E. A., Povelones, M. L., & Povelones, M. (2019). Dramatic changes in gene expression in different forms of *Crithidia fasciculata* reveal potential mechanisms for insect-specific adhesion in kinetoplastid parasites. *PLOS Neglected Tropical Diseases*, 13(7), e0007570.

<https://doi.org/10.1371/journal.pntd.0007570>

Georgia State University Login. (n.d.). Retrieved August 1, 2022, from

https://idp.gsu.edu/oxauth/authorize.htm?scope=openid+email+user_name&response_type=code&redirect_uri=https%3A%2F%2Fidp.gsu.edu%2Fidp%2FAuthn%2FoxyAuth&state=eyJ0eXAiOiJKV1QiLCJhbGciOiJIub251In0.eyJzdGF0ZSI6ImZTcTdJOHA4YkMiLCJjb252ZXJzYXRpb24iOiJlMjMxIn0.&nonce=w4v9XmARr7&client_id=1101.fbda2f40-d0b7-4330-ab1b-108299475543

Gerasimov, E., Zemp, N., Schmid-Hempel, R., Schmid-Hempel, P., & Yurchenko, V. (2019).

Genomic Variation among Strains of *Crithidia bombi* and *C. expoeki*. *MSphere*, 4(5), e00482-19.

<https://doi.org/10.1128/mSphere.00482-19>

- Green, D. R., & Llambi, F. (2015). Cell Death Signaling. *Cold Spring Harbor Perspectives in Biology*, 7(12), a006080. <https://doi.org/10.1101/cshperspect.a006080>
- Ho, A. (n.d.). *Stressful Situations: Investigating Cell Death Pathways in Protozoal Parasite Crithidia fasciculata*. <https://doi.org/10.57709/26634859>
- Hughes, A. L., & Piontkivska, H. (2003). [No title found]. *Kinetoplastid Biology and Disease*, 2(1), 15. <https://doi.org/10.1186/1475-9292-2-15>
- Ishemgulova, A., Butenko, A., Kortiřová, L., Boucinha, C., Grybchuk-Ieremenko, A., Morelli, K. A., Tesařová, M., Kraeva, N., Grybchuk, D., Pánek, T., Flegontov, P., Lukeř, J., Votýpka, J., Pavan, M. G., Opperdoes, F. R., Spodareva, V., d'Avila-Levy, C. M., Kostygov, A. Yu., & Yurchenko, V. (2017). Molecular mechanisms of thermal resistance of the insect trypanosomatid *Crithidia thermophila*. *PLoS ONE*, 12(3), e0174165. <https://doi.org/10.1371/journal.pone.0174165>
- Kimura, H., & Murad, F. (1975). Subcellular localization of guanylate cyclase. *Life Sciences*, 17(6), 837–843. [https://doi.org/10.1016/0024-3205\(75\)90433-6](https://doi.org/10.1016/0024-3205(75)90433-6)
- Kitagaki, H., Araki, Y., Funato, K., & Shimoi, H. (2007). Ethanol-induced death in yeast exhibits features of apoptosis mediated by mitochondrial fission pathway. *FEBS Letters*, 581(16), 2935–2942. <https://doi.org/10.1016/j.febslet.2007.05.048>
- MacGregor, P., Szöoř, B., Savill, N. J., & Matthews, K. R. (2012). Trypanosomal immune evasion, chronicity and transmission: an elegant balancing act. *Nature Reviews. Microbiology*, 10(6), 10.1038/nrmicro2779. <https://doi.org/10.1038/nrmicro2779>
- MacGregor, P., Szöoř, B., Savill, N. J., & Matthews, K. R. (2012). Trypanosomal immune evasion, chronicity and transmission: an elegant balancing act. *Nature Reviews. Microbiology*, 10(6), 431–438. <https://doi.org/10.1038/nrmicro2779>

- Mårdh, G., Luehr, C. A., & Vallee, B. L. (1985). Human class I alcohol dehydrogenases catalyze the oxidation of glycols in the metabolism of norepinephrine. *Proceedings of the National Academy of Sciences*, 82(15), 4979–4982. <https://doi.org/10.1073/pnas.82.15.4979>
- Menna-Barreto, R. F. S. (2019). Cell death pathways in pathogenic trypanosomatids: lessons of (over)kill. *Cell Death & Disease*, 10(2), 93. <https://doi.org/10.1038/s41419-019-1370-2>
- Panin, F., & Peana, A. T. (2019). Sleep and the Pharmacotherapy of Alcohol Use Disorder: Unfortunate Bedfellows. A Systematic Review With Meta-Analysis. *Frontiers in Pharmacology*, 10. <https://www.frontiersin.org/articles/10.3389/fphar.2019.01164>
- Pyruvate decarboxylase - Proteopedia, life in 3D*. (n.d.). Retrieved July 27, 2022, from https://proteopedia.org/wiki/index.php/Pyruvate_decarboxylase
- Rangel, D. A., Lisboa, C. V., Novaes, R. L. M., Silva, B. A., Souza, R. de F., Jansen, A. M., Moratelli, R., & Roque, A. L. R. (2019). Isolation and characterization of trypanosomatids, including *Crithidia mellificae*, in bats from the Atlantic Forest of Rio de Janeiro, Brazil. *PLOS Neglected Tropical Diseases*, 13(7), e0007527. <https://doi.org/10.1371/journal.pntd.0007527>
- Rieger, A. M., Nelson, K. L., Konowalchuk, J. D., & Barreda, D. R. (2011). Modified annexin V/propidium iodide apoptosis assay for accurate assessment of cell death. *Journal of Visualized Experiments: JoVE*, 50, 2597. <https://doi.org/10.3791/2597>
- Schindelin, J., Arganda-Carreras, I., Frise, E., Kaynig, V., Longair, M., Pietzsch, T., Preibisch, S., Rueden, C., Saalfeld, S., Schmid, B., Tinevez, J.-Y., White, D. J., Hartenstein, V., Eliceiri, K., Tomancak, P., & Cardona, A. (2012). Fiji: an open-source platform for biological-image analysis. *Nature Methods*, 9(7), 676–682. <https://doi.org/10.1038/nmeth.2019>
- Schneider, C. A., Rasband, W. S., & Eliceiri, K. W. (2012). NIH Image to ImageJ: 25 years of image analysis. *Nature Methods*, 9(7), 671–675. <https://doi.org/10.1038/nmeth.2089>

- Shen, M. L., Lipsky, J. J., & Naylor, S. (2000). Role of disulfiram in the in vitro inhibition of rat liver mitochondrial aldehyde dehydrogenase. *Biochemical Pharmacology*, *60*(7), 947–953.
[https://doi.org/10.1016/S0006-2952\(00\)00435-4](https://doi.org/10.1016/S0006-2952(00)00435-4)
- Shen, N., Wang, J., Liu, C., Li, Y., & Li, Q. (2014). Domesticating brewing yeast for decreasing acetaldehyde production and improving beer flavor stability. *European Food Research and Technology*, *238*(3), 347–355. <https://doi.org/10.1007/s00217-014-2169-0>
- Singh, A., Allam, M., Kwenda, S., Khumalo, Z. T. H., Ismail, A., & Oliver, S. V. (2022). The dynamic gut microbiota of zoophilic members of the *Anopheles gambiae* complex (Diptera: Culicidae). *Scientific Reports*, *12*(1), 1495. <https://doi.org/10.1038/s41598-022-05437-y>
- Smith, T. K., Bringaud, F., Nolan, D. P., & Figueiredo, L. M. (2017). Metabolic reprogramming during the *Trypanosoma brucei* life cycle. *F1000Research*, *6*, F1000 Faculty Rev-683.
<https://doi.org/10.12688/f1000research.10342.2>
- Stokes, M., & Abdijadid, S. (2022). Disulfiram. In *StatPearls*. StatPearls Publishing.
<http://www.ncbi.nlm.nih.gov/books/NBK459340/>
- Thiamine Pyrophosphate - an overview* | *ScienceDirect Topics*. (n.d.). Retrieved July 27, 2022, from <https://www.sciencedirect.com/topics/agricultural-and-biological-sciences/thiamine-pyrophosphate>
- Wang, X., Jobe, M., Tyler, K. M., & Steverding, D. (2008). Efficacy of common laboratory disinfectants and heat on killing trypanosomatid parasites. *Parasites & Vectors*, *1*, 35.
<https://doi.org/10.1186/1756-3305-1-35>
- Wild Fermentation. (2020, December 6). *Science in the News*.
<https://sitn.hms.harvard.edu/flash/2020/wild-fermentation/>

- Wolvetang, E. J., Johnson, K. L., Krauer, K., Ralph, S. J., & Linnane, A. W. (1994). Mitochondrial respiratory chain inhibitors induce apoptosis. *FEBS Letters*, *339*(1–2), 40–44.
[https://doi.org/10.1016/0014-5793\(94\)80380-3](https://doi.org/10.1016/0014-5793(94)80380-3)
- Yi, H.-S., Lee, Y.-S., Byun, J.-S., Seo, W., Jeong, J.-M., Park, O., Dueter, G., Haseba, T., Kim, S. C., Park, K.-G., Gao, B., & Jeong, W.-I. (2014). Alcohol dehydrogenase III exacerbates liver fibrosis by enhancing stellate cell activation and suppressing natural killer cells in mice: YI ET AL. *Hepatology*, *60*(3), 1044–1053. <https://doi.org/10.1002/hep.27137>
- Zhang, X., Li, S.-J., Li, Z., He, C. Y., Hide, G., Lai, D.-H., & Lun, Z.-R. (2019a). Cell cycle and cleavage events during in vitro cultivation of bloodstream forms of *Trypanosoma lewisi*, a zoonotic pathogen. *Cell Cycle*, *18*(5), 552–567. <https://doi.org/10.1080/15384101.2019.1577651>