



Genetic Variations in the Transforming Growth Factor- β 1 Pathway May Improve Predictive Power for Overall Survival in Non-small Cell Lung Cancer

Hong Zhang¹, Weili Wang², Wenhu Pi³, Nan Bi⁴, Colleen DesRosiers⁵, Fengchong Kong⁶, Monica Cheng⁵, Li Yang⁷, Tim Lautenschlaeger⁵, Shruti Jolly⁶, Jianyue Jin² and Feng-Ming (Spring) Kong^{2,7*}

¹ Department of Radiation Oncology, School of Medicine, University of Maryland Baltimore, Baltimore, MD, United States,

² Department of Radiation Oncology, Case Western Reserve University Comprehensive Cancer Center, Cleveland, OH,

United States, ³ Laboratory of Cellular and Molecular Radiation Oncology, Department of Radiation Oncology, Radiation Oncology Institute of Enze Medical Health Academy, Affiliated Taizhou Hospital of Wenzhou Medical University, Taizhou,

China, ⁴ Department of Radiation Oncology, National Cancer Center/National Clinical Research Center for Cancer/Cancer Hospital, Chinese Academy of Medical Sciences and Peking Union Medical College, Beijing, China, ⁵ Departments of

Radiation Oncology, IU Simon Cancer Center, Indiana University School of Medicine, Indianapolis, IN, United States,

⁶ Michigan Medicine Radiation Oncology, University Hospital, Ann Arbor, MI, United States, ⁷ Department of Clinical

Oncology, The University of Hong Kong-Shenzhen Hospital, Li Ka SHing Medical School, Shenzhen, China

OPEN ACCESS

Edited by:

Kristin Higgins,
Emory University, United States

Reviewed by:

Sibo Tian,
Emory University, United States
Aparna Kesarwala,
Emory University, United States

*Correspondence:

Feng-Ming (Spring) Kong
kong0001@hku.hk;
fxk132@case.edu

Specialty section:

This article was submitted to
Thoracic Oncology,
a section of the journal
Frontiers in Oncology

Received: 28 August 2020

Accepted: 12 February 2021

Published: 07 July 2021

Citation:

Zhang H, Wang W, Pi W, Bi N,
DesRosiers C, Kong F, Cheng M,
Yang L, Lautenschlaeger T, Jolly S,
Jin J and Kong F-M (2021) Genetic
Variations in the Transforming Growth
Factor- β 1 Pathway May Improve
Predictive Power for Overall Survival in
Non-small Cell Lung Cancer.
Front. Oncol. 11:599719.
doi: 10.3389/fonc.2021.599719

Purpose: Transforming growth factor- β 1 (TGF- β 1), a known immune suppressor, plays an important role in tumor progression and overall survival (OS) in many types of cancers. We hypothesized that genetic variations of single nucleotide polymorphisms (SNPs) in the TGF- β 1 pathway can predict survival in patients with non-small cell lung cancer (NSCLC) after radiation therapy.

Materials and Methods: Fourteen functional SNPs in the TGF- β 1 pathway were measured in 166 patients with NSCLC enrolled in a multi-center clinical trial. Clinical factors, including age, gender, ethnicity, smoking status, stage group, histology, Karnofsky Performance Status, equivalent dose at 2 Gy fractions (EQD2), and the use of chemotherapy, were first tested under the univariate Cox's proportional hazards model. All significant clinical predictors were combined as a group of predictors named "Clinical." The significant SNPs under the Cox proportional hazards model were combined as a group of predictors named "SNP." The predictive powers of models using Clinical and Clinical + SNP were compared with the cross-validation concordance index (C-index) of random forest models.

Results: Age, gender, stage group, smoking, histology, and EQD2 were identified as significant clinical predictors: Clinical. Among 14 SNPs, BMP2:rs235756 (HR = 0.63; 95% CI:0.42–0.93; p = 0.022), SMAD9:rs7333607 (HR = 2.79; 95% CI 1.22–6.41; p = 0.015), SMAD3:rs12102171 (HR = 0.68; 95% CI: 0.46–1.00; p = 0.050), and SMAD4: rs12456284 (HR = 0.63; 95% CI: 0.43–0.92; p = 0.016) were identified as powerful predictors of SNP. After adding SNP, the C-index

of the model increased from 84.1 to 87.6% at 24 months and from 79.4 to 84.4% at 36 months.

Conclusion: Genetic variations in the TGF- β 1 pathway have the potential to improve the prediction accuracy for OS in patients with NSCLC.

Keywords: machine learning, single nuclear polymorphism, overall survival, non-small cell lung cancer, TGF- β 1

INTRODUCTION

Lung cancer is the leading cause of cancer death and the second most commonly diagnosed type of cancer in the USA. It was estimated that 235,760 new cases would be diagnosed in 2020, accounting for about 12.5% of all cancers diagnosed, and only 23% of cases are diagnosed at an early stage (1, 2). The 5-year survival rate is only about 22.6% in the USA, though there is already a 13% improvement over the last 5 years for all lung cancers (2, 3). Approximately, 83% of patients with lung cancer are identified with non-small cell cancer (NSCLC) (4), and radiation therapy (RT) is a mainstay local treatment used for all stages of the disease (5). However, the survival benefit of RT to an individual patient varies with the baseline clinical and genetic factors of each patient. Some clinical factors, such as age, stage group, and histology, have a strong correlation with the overall survival (OS) of patients with NSCLC after RT (6). There is a need for an integrated clinical and genetic model for survival prediction.

Recent studies have shown a strong correlation between transforming growth factor- β 1 (TGF- β 1) and OS in various types of cancer (7). TGF- β 1 is a prototype of a multifunctional cytokine and plays an important role in tumor angiogenesis, stroma formation, immune suppression, carcinogenesis, tumor metastasis progression, and prognosis for patients with cancer. Single nucleotide polymorphisms (SNPs) of TGF- β 1 have been significant factors for prognosis in colon and pancreatic cancers (8, 9). We hypothesized that functional SNPs of the TGF- β 1 pathway genes can regulate the TGF- β 1 expression level and function of the downstream pathway genes for tumor progression and the immune system of the host, thus contributing to OS in patients with NSCLC.

MATERIALS AND METHODS

Study Population

This study included 166 patients with inoperable stages I–III NSCLC, enrolled through prospective studies approved by the institutional review board (IRB) of participating centers. All patients signed written informed consent. Patients received definitive thoracic radiotherapy (≥ 55 Gy EQD2) with or without chemotherapy. All patients were treated with three-dimensional conformal RT techniques as described in previous studies (10, 11). Clinical factors, including total equivalent dose at 2 Gy fractions (EQD2), age, gender, ethnicity, smoking history, histology, stage group, Karnofsky performance score (KPS), and the use of chemotherapy, were collected prospectively.

Selection of SNPs

We selected 14 functional SNPs present in the 11 genes responsible for the TGF- β 1 pathways based on the following criteria: (1) tag SNPs in the candidate genes; (2) a minor allele frequency greater than 10%; and (3) previously reported significant findings with correlation with the outcome of RT or chemotherapy or cancer risk.

Sample Collection and Genotyping

The buffy coat was collected from each patient before the commencement of treatment and stored at -80°C . Genomic DNA was extracted from the buffy coat using the Blood Mini Kit of Gentra[®] Puregene[®] (Qiagen, Valencia, CA) according to the protocol of the manufacturer. The concentrations of genomic DNA were measured by a Nano Drop 2000c Spectrophotometer (Nano Drop Technologies, Inc., Wilmington, DE). Quantified DNA samples were placed on a matrix-assisted laser desorption/ionization time-of-flight mass spectrometer (Sequenom, Inc., San Diego, CA) according to the protocol of the manufacturer. For pre-genotyping quality control, randomly selected samples were blindly run in duplicate or triplicate. For post-genotyping quality control, low call-rate SNPs that had a call rate of $<90\%$ in all samples or the samples that had a call rate of $<90\%$ in all SNPs were excluded from further analysis.

Statistical Analysis

The analysis was performed with R (12), and the missing data were imputed with the most frequent values. A power analysis was performed based on the data. The Cox proportional hazards model (13) was used to carry out univariate analysis, and the random survival forest tree (14) was used to carry out multivariate analysis. For discrete clinical factors, the median survival time (MST) with 95% CIs and the 24-month survival time with 95% CIs were calculated. At first, the Cox proportional hazards model was used to estimate the hazard ratio (HR) and 95% confidence interval (CI) of each predictor. The OS and event indicator, used as the output variables, were calculated from the beginning of treatment to the last visit or death. All significant predictors ($p < 0.05$) selected from clinical factors with the univariate Cox proportional hazards model were combined as a group of predictors named “Clinical.” The independence between SNPs was tested before running a multivariate model. To show the results of the independence test, the linkage disequilibrium (LD) (15) was calculated and plotted. Then, each SNP was tested with the Cox proportional hazards model. The significant SNPs were combined as a group of predictors named “SNP.” Two models, *RModel1* and *RModel2*, were built as random survival forest trees on Clinical and Clinical + SNP, respectively. The

justification for using the random survival forest tree instead of the Cox proportional hazards model as the multivariate model was given that: (1) the ensemble structure of the random survival forest tree could avoid the overfitting issue, given the limited number of patients and numerous predictors used in the study; (2) the random survival forest tree could handle both categorical and continuous predictors smoothly; (3) the Cox model assumes that continuous predictor variables have linear relationships with the risk of the event occurring, which is usually not true (16).

The predictive power of *RModel1* and *RModel2* were estimated and compared in terms of the concordance index (C-index) (17) with a 3-fold cross-validation (18). The 3-fold cross-validation randomly and evenly divided the whole data set into three groups. Then, the random survival forest classifier was trained by using two groups as training data. The trained classifier was tested using the remaining group to get the evaluation metrics. In this way, three evaluation metrics could be achieved using three separate groups as testing data, and the mean evaluation metrics were used in the evaluation.

RESULTS

Patient Clinical Factors

A total of 166 patients were included in this study. The death probability was 0.51 for the data. The postulated HR was set as 2. The postulated proportions of the sample size allotted to one group were 0.5. Type I error was 0.05, as stated above. The power of 166 patients was 0.7, which is less than the traditional 0.8, but it is still reasonable (19). The median age was 65.7 (64.1, 67.8) years. About 75.3% (68.7, 81.9%) patients received concurrent and adjuvant chemotherapy. The overall MST was 24.5 (19.3, 30.6) months, and the median follow-up time was 22.8 (9.2, 36.3) months. The clinical factors of the patients shown in **Table 1**, including gender ($p = 0.0084$), stage group ($p = 0.016$ for stage group 2 and $p = 0.19$ for stage group 3), smoking ($p = 0.061$ for former smokers and $p = 0.041$ for smokers), histology ($p = 0.024$ for squamous, $p = 0.022$ for large cell, and $p = 0.0018$ for other), age ($p = 0.011$), and EQD2 ($p = 0.00024$), were significant. This group of significant clinical factors was defined as Clinical. The favorable factors were female, early-stage group, no smoking, adenocarcinoma, young, and high EQD2, consistent with published studies (20). Ethnicity, the use of chemotherapy, and KPS did not show a significant correlation with survival and were not included in the multivariate analysis.

The effect of clinical factors in patients with stage III NSCLC was also tested similarly, and the results were similar to that discussed above. Detailed findings were shown in the **Supplementary File**.

Individual SNPs and OS

The correlation of all SNPs with OS was summarized in **Table 2**. The genetic model for each SNP followed the previous publication (21). Among them, four SNPs, including BMP2:rs235756 ($p = 0.022$), SMAD9:rs7333607 ($p = 0.015$), SMAD3:rs12102171 ($p = 0.050$), and SMAD4: rs12456284 ($p = 0.016$), were significant predictors for OS. The Kaplan-Meier

(KM) plots of these four SNPs are shown in **Figure 1** with p -values for the log-rank test listed. All p -values for the log-rank test were significant with the cut-off value of 0.05.

BMP2:rs235756 (HR = 0.63; 95% CI:0.42–0.93) in a recessive model showed lower risk for patients with minor allele (T). The MST increased from 22 months for patients with the wild-type (C) to 37.9 months for patients carrying the minor allele (T) (Log-rank $p = 0.020$, **Figure 1A**).

SMAD9:rs7333607 (HR = 2.79; 95% CI 1.22–6.41) in a recessive model was correlated with an increased risk of death among patients carrying the minor allele (G). Patients with minor allele (G) of this SNP had a significantly shorter MST of 7.1 months compared with 25.1 months for patients with the wild type (A) (Log-rank $p = 0.011$, **Figure 1B**).

SMAD3:rs12102171 (HR = 0.68; 95% CI: 0.46–1.00) was in a dominant model. Patients carrying the minor allele (T) had a significantly decreased risk of death. This decrease in risk resulted in an increased MST by nearly 11.8 months: from 18.8 months for those with the wild-type genotype (C) to 30.6 months for patients carrying the minor allele (T) (Log-rank $p = 0.050$, **Figure 1C**).

SMAD4: rs12456284 (HR = 0.63; 95% CI: 0.43–0.92) in a dominant model which correlated with a decreased risk of death among patients carrying the minor allele (G). These patients with the minor allele (G) of this SNP had a significantly longer MST of 32 months compared with 22 months for patients with the wild type (A) (Log-rank $p = 0.011$, **Figure 1D**).

The effect of SNPs in patients with stage III NSCLC was also tested similarly, and the results were similar to that discussed above. Detailed findings were shown in the **Supplementary File**.

A Combined Model of Integrating *Clinical and SNP* Factors for Survival

The LD plot of 14 SNPs is shown in **Figure 2**. Most SNPs showed strong independence ($R^2 < 0.2$). The significant SNPs were independent of each other, and the multivariate analysis of each SNP was valid.

After a long-term follow-up of 18–100 months, the random forest classifier of *RModel2* with 1,000 trees trained with Clinical+SNP significantly increased the C-index compared to that of *RModel1* as shown in **Figure 3A**. For example, the C-index of *RModel1* at 24 months was 84.1%. After adding SNP as predictors, the C-index of *RModel2* increased to 87.6%. At 36 months, the C-index increased from 79.4 to 84.4%. A t -test was applied on the C-index of the two models, and the p -value was 0.003 for both models, which indicated that *RModel2* performed better than *RModel1* in terms of the C-index.

DISCUSSION

This study analyzed the correlation with clinical outcomes in patients with several adverse genotypes, and the results suggest that the cumulative influence by multiple genetic variants within the TGF- β signaling pathways could improve the prediction accuracy for survival among patients with NSCLC after RT.

TABLE 1 | Selected clinical factors of NSCLC patient population.

Factors	Cases # n (%)	MST, 95% CI (month)	2 years survival, 95%CI (%)	HR (95% CI)	P-value
Gender					
Male	127 (76.5)	22.0	45.1 (37.2, 54.7)		
Female	39 (23.5)	38.2	65.8 (53.2, 82.7)	0.52 (0.32,0.85)	0.0084
Ethnicity					
Caucasian	158 (95.2)	24.5	50.2 (42.9, 58.7)		
No Caucasian	8 (4.8)	25.6	50.0 (25.0, 100)	0.85 (0.34,2.09)	0.73
Stage					
1	32 (19.3)	39.4	71.7 (57.7, 89.2)		
2	19 (11.4)	14.3	26.3 (12.4,55.8)	2.26 (1.16,4.38)	0.016
3	115 (69.3)	23.0	47.6 (39.2,57.9)	1.39 (0.85,2.27)	0.19
Smoking					
No smoking	6 (3.6)	NA	83.3 (58.3,100)		
Former smoker	79 (47.6)	23.1	48.1 (38.3,60.5)	6.64 (0.92,48.03)	0.061
Smoker	81 (48.8)	22.0	47.0 (36.6,60.4)	7.93 (1.09,57.55)	0.041
Chemotherapy					
No	41 (24.7)	22.0	48.7 (35.5,66.7)		
Yes	125 (75.3)	25.1	50.3 (41.7,60.6)	0.84 (0.55,1.28)	0.43
Histology					
Adenocarcinoma (1)	35 (21.1)	37.2	65.7 (51.7,83.5)		
Squamous (2)	56 (33.7)	22.2	47.5 (35.9,62.7)	1.91 (1.09, 3.34)	0.024
Other (3)	75 (45.2)	18.6	38.5 (27.3,54.2)	2.42 (1.41,4.17)	0.0014
Age				1.02 (1.005,1.04)	0.011
KPS				1.00 (0.98,1.008)	0.51
EQD2				0.97 (0.96,0.993)	0.00024

MST, median survival time; HR, hazard ratio. Bold indicate statistical significance at P value of 0.05.

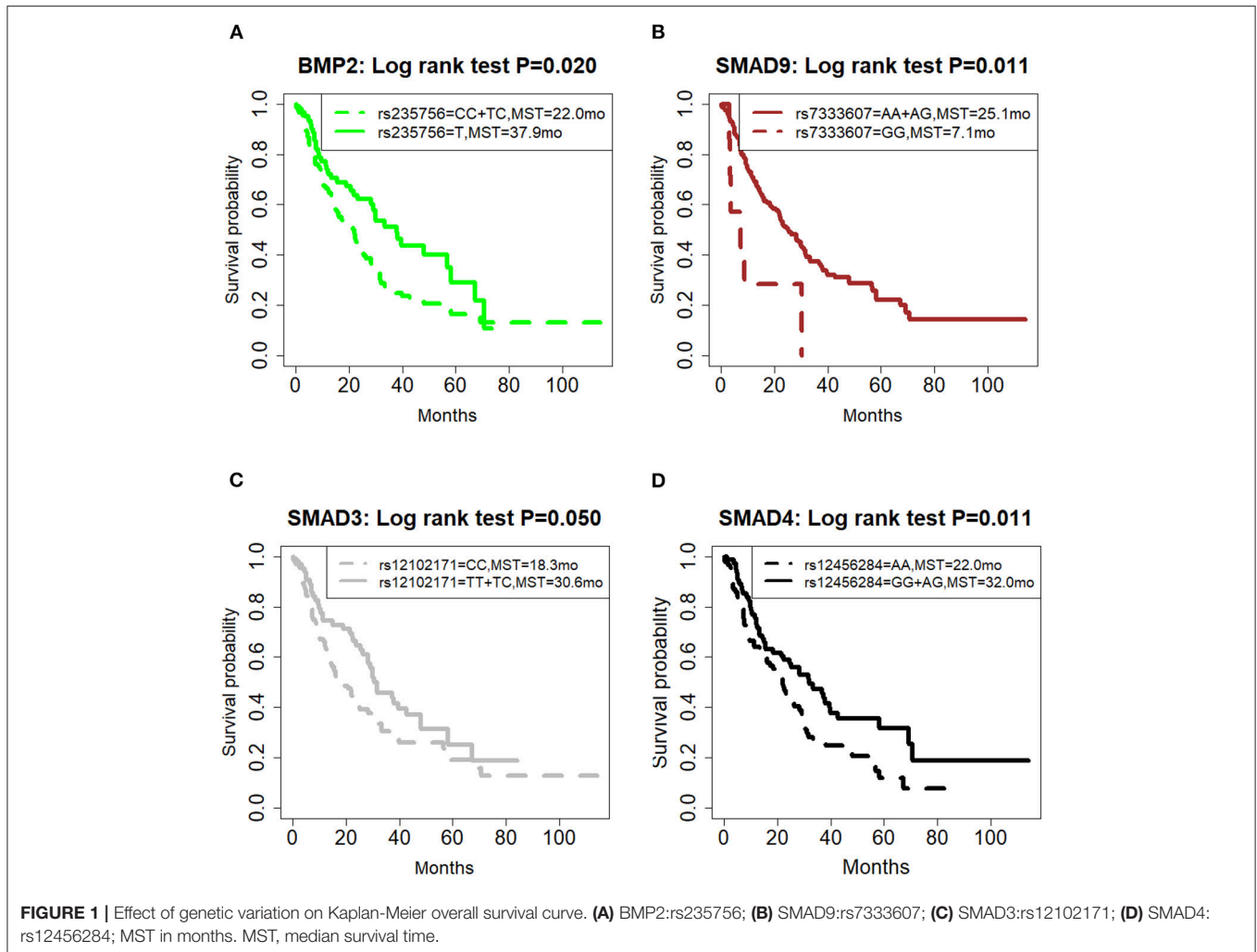
TABLE 2 | Genetic correlation with OS, univariate analysis (N = 166).

Gene	SNP	Wild genotype#	Model*	HR for the minor allele (95%CI)	Effect of minor on survival	P-value
BMP2	rs235756	C (63.2%)	rec	0.63 (0.42,0.93)	Favorable	0.022
ACVR2A	rs1424954	A (34.6%)	rec	1.72 (0.92,3.18)	Unfavorable	0.088
BMP1	rs3857979	C (75.9%)	rec	1.17 (0.76,1.81)	Unfavorable	0.47
INHBC	rs4760259	C (90.7%)	rec	1.07 (0.58,2.01)	Unfavorable	0.82
SMAD3	rs4776342	A (58.8%)	add	0.76 (0.52,1.12)	Favorable	0.17
TGFB1	rs4803455	A (25.9%)	dom	1.38 (0.88,2.18)	Unfavorable	0.16
SMAD3	rs6494633	C (76.9%)	rec	1.06 (0.68,1.63)	Unfavorable	0.81
SMAD7	rs7227023	A (0.6%)	dom	1.11 (0.15,7.95)	Unfavorable	0.92
SMAD9	rs7333607	A (95.8%)	rec	2.79 (1.22,6.41)	Unfavorable	0.015
SMAD1	rs11724777	A (69.0%)	rec	0.76 (0.49,1.16)	Favorable	0.20
SMAD1	rs11939979	A (19.0%)	dom	1.02 (0.64,1.64)	Unfavorable	0.93
SMAD3	rs12102171	C (62.0%)	dom	0.68 (0.46,1.00)	Favorable	0.050
SMAD4	rs12456284	A (55.4%)	dom	0.63 (0.43,0.92)	Favorable	0.016
SMAD6	rs12913975	A (6.8%)	dom	1.23 (0.57,2.64)	Unfavorable	0.60

*The percentage was based on our data *Genetic model of inheritance: dom, dominant model; rec, recessive model; add, additive model. SNP, single nucleotide polymorphism. Bold indicate statistical significance at P value of 0.05.

The survival significance of TGF- β 1 pathway genomics has a biologic rationale. The TGF- β is a prototype of a multifunctional cytokine and is the ligand for the TGF- β type I and II receptors. TGF- β composes of TGF- β 1,

2, 3, and other about 30 family members, including the activin/inhibin subfamily, such as BMP subfamily (Bone Morphogenetic Proteins BMPs) and the mullerian inhibitory substance (22, 23). BMPs are the intracellular signaling

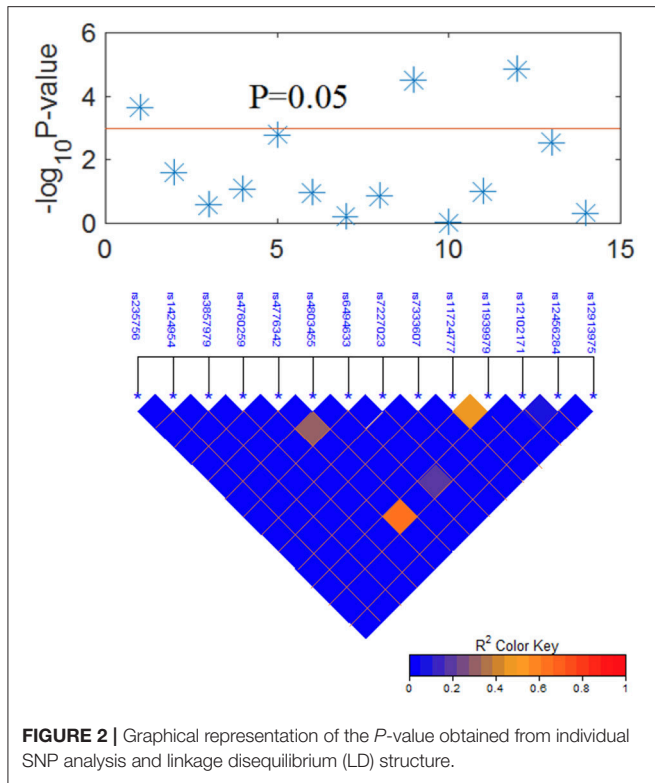


members which can activate downstream signaling genes in TGF- β signaling pathways (24, 25). Smad proteins (Smad 1 through 9) are transcriptional regulators which are important for intracellular TGF- β signaling (26). In TGF- β signaling pathways, those subfamily genes have a similar effect on cell growth, cell proliferation and differentiation, and cell death and plays a key role in embryonic development, immune system regulation, and the duo roles of diseases, such as skeletal diseases, fibrosis, and cancer (23, 27–30). TGF- β signaling is very important in lung health and disease, regulating lung organogenesis and homeostasis, including alveolar cells and epithelial cells differentiation, fibroblast activation, and extracellular matrix organization. Whereas, TGF- β is the most potent epithelial-mesenchymal transition (EMT) inducer in NSCLC formation (31). DNA variants like SNPs can affect gene expressions and the functions of core disease-related genes (32).

The findings that SNPs in the TGF- β 1 pathway genes can predict survival are clinically meaningful SNPs and consistent with the previous reports. Signature of TGF- β predicts metastasis-free survival in NSCLC (33, 34). SNPs of TGF- β 1

gene have been reported to associate with OS in patients with NSCLC treated with definitive radio (chemo) therapy (35–37). The signature of a single SNP may only provide a modest or undetectable effect, whereas the amplified effects of combined SNPs in the same pathway may enhance predictive power (7, 38). In radiation, TGF- β 1 may help in predicting radiation-induced lung toxicity (RILT) (39–41).

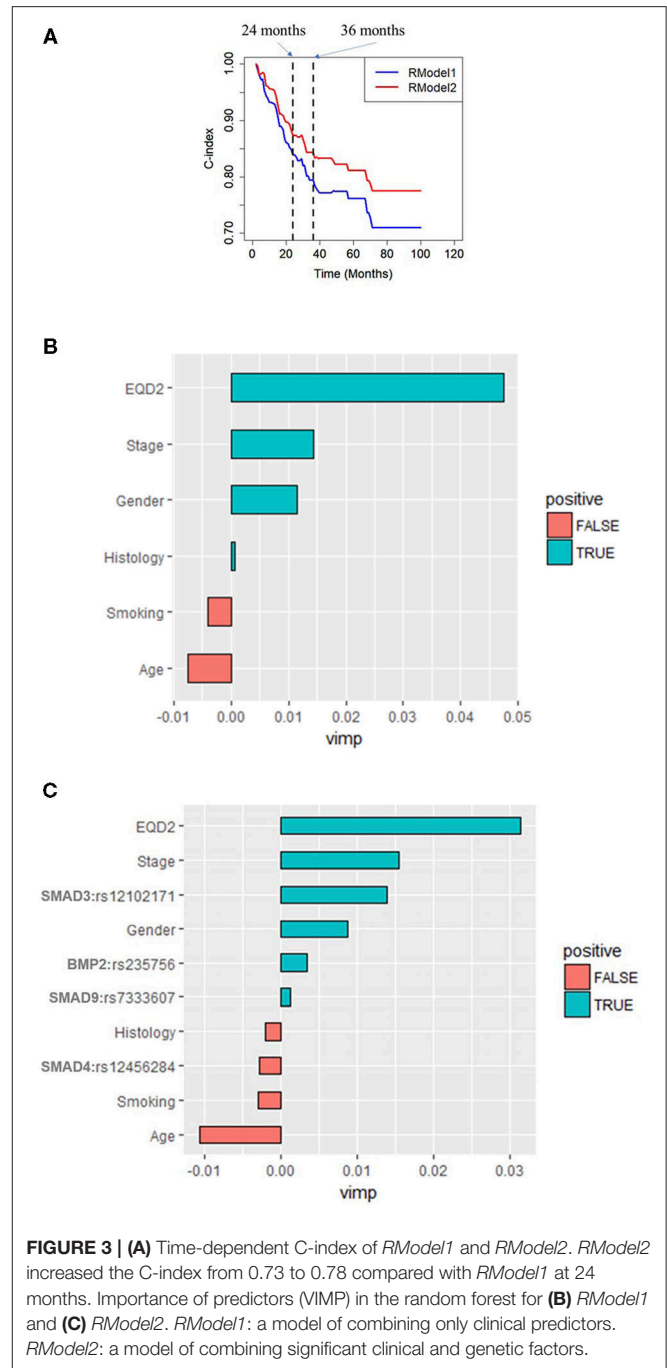
The SNPs identified in the study with prognostic values are consistent with reports from other investigators on their significance in other cancers (42–44). BMP2:rs235756 is in the downstream region of the BMP2 gene and has already been shown to alter normal BMP function. Several studies suggested that BMP2:rs235756 increased the production of the BMP protein and the concentration of serum ferritin levels, which promoted BMP signaling in cancer progression (42–44). BMP2 is highly expressed in lung cancer and is involved in regulating lung cancer angiogenesis and metastasis (45, 46). Silencing the expression of BMP-2 inhibits lung cancer cell proliferation and migration (47). BMP2:rs235756 has previously been reported as a significant biomarker for OS in patients with lung cancer (21). For patients who underwent RT, BMP2:rs235756 was shown



to predict radiation pneumonitis (48), which is an important clinical outcome.

Furthermore, this study also suggested that SMAD3:rs12102171 correlated with OS in NSCLC. SMAD3:rs12102171, located in the intron region between exon3 and 4 of the SMAD3 gene, is known for its function as a mediator of TGF-β pro-fibrotic activities. Inflammatory cells and fibroblasts without smad3 do not auto-induce TGF-β, but Smad3 null mice are resistant to radiation-induced fibrosis (49). TGF-β/Smad3 signaling plays critical roles in biological processes, such as epithelial-mesenchymal transition (EMT) lung cancer cell progression and lung cancer patient survival (21, 50). That report showed a significant correlation with osteoarthritis (51). SMAD9:rs7333607 is located in the intron region of the SMAD9 gene and only correlated with lung cancer survival (21).

Smad4 belongs to the Smad gene family, acts as a mediator of TGF-β signaling pathways (26), and was classified as a tumor suppressor gene which plays important roles in maintaining tissue homeostasis and suppressing tumorigenesis (1). The loss of SMAD4 expression significantly correlated with poor OS in patients with cancers, such as pancreatic cancer, colorectal cancer, and prostate cancer (52, 53). The SNP rs12456284 locates 3' UTR region of the Smad4 gene, was predicted to influence the potential miRNA binding, and downregulate the gene expression with Smad4 associated with gastric cancer (54). Genetic variants in the BMP/Smad4/Hamp hepcidin-regulating pathway, such as Hamp rs1882694, BMP2 rs1979855, rs3178250, and rs1980499,



were associated with OS, local-regional progression-free survival, progression-free survival, and distant metastasis-free survival in patients receiving definitive RT for NSCLC but not rs12456284 (55).

In a tree analysis of the study, the variable importance (VIMP) measures the increase (or decrease) in prediction error for the forest classifier when a variable is randomly “noised-up.” A large positive VIMP shows that the prediction accuracy of the forest classifier is significantly degraded when a variable is noised-up. Thus, a large VIMP shows a more predictive variable. The

VIMP of each variable in the *RModel1* and *RModel2* are listed in **Figures 3B,C**. It is shown that EQD2 and stage group were always two important predictors in the two models. SMAD3:rs12102171 was more important than other predictors, except for EQD2 and stage group, which was not reported before. BMP2:rs235756 and SMAD4: rs12456284 have a similar importance as smoking, which has been consistently shown as an important predictor in the clinical OS of patients with NSCLC. SMAD9:rs7333607 was less important and it may be overlooked should the results be validated by independent studies.

The present study has several limitations. First, this study has limited statistical power because of the small sample size in each stage group and the analysis of the limited number of SNPs. Second, the selection of the SNPs was rather arbitrary, which was limited by the published data at the start of this study. Additional SNPs candidates may be further identified; future studies can use the methodology of the study to develop better models with the inclusion of more candidates and more external validations. Although it showed the promise of genetic variation in guiding personalized medicine, the study shall be considered exploratory. The findings should be validated by an independent study population.

CONCLUSIONS

In this study, we systematically evaluated genetic variations in the TGF- β 1 pathway as predictors of the outcomes for patients with NSCLC treated with RT. Four SNPs (SMAD3:rs12102171, BMP2:rs235756, SMAD9:rs7333607, and SMAD4: rs12456284) showed strong correlations with OS in patients with NSCLC after RT. The current model improves prediction accuracy by adding genetic variations in the TGF- β 1 pathway.

DATA AVAILABILITY STATEMENT

The datasets presented in this study can be found in online repositories. The names of the repository/repositories and

accession number(s) can be found below: NCBI (accession numbers are: SCV001478478–SCV001478481).

ETHICS STATEMENT

The studies involving human participants were reviewed and approved by IRB. The patients/participants provided their written informed consent to participate in this study. Written informed consent was obtained from the individual(s) for the publication of any potentially identifiable images or data included in this article.

AUTHOR CONTRIBUTIONS

Concept and design: JJ, HZ, and F-MK. Acquisition, analysis, or interpretation of data: HZ, WW, WP, NB, JJ, and F-MK. Drafting of the manuscript: HZ, JJ, and F-MK. Critical revision of the manuscript for important intellectual content: WW, NB, WP, FK, MC, LY, TL, and SJ. Statistical analysis: HZ, CD, and JJ. Obtained funding: F-MK. Administrative, technical, or material support: WW, WP, and NB. Study supervision: JJ and F-MK.

FUNDING

This study was supported in parts by the National Institutes of Health (grant number R01CA142840, PI: F-MK) and Shenzhen Science and Technology grant KQTD20180411185028798 (PI: F-MK).

SUPPLEMENTARY MATERIAL

The Supplementary Material for this article can be found online at: <https://www.frontiersin.org/articles/10.3389/fonc.2021.599719/full#supplementary-material>

REFERENCES

1. Siegel RL, Miller KD, Jemal AJC. Cancer statistics, 2019 (2019) 69:7–34. doi: 10.3322/caac.21551
2. Siegel RL, Miller KD, Fuchs HE, Jemal A. Cancer statistics, 2021. *CA Cancer J Clin.* (2021) 71:7–33. doi: 10.3322/caac.21654
3. Staff A. *Cancer Facts and Figures*. Atlanta: American Cancer Society, Cancer (2018).
4. Miller KD, Siegel RL, Lin CC, Mariotto AB, Kramer JL, Rowland JH, et al. Cancer treatment and survivorship statistics, 2016. *CA Cancer J Clin.* (2016) 66:271–89. doi: 10.3322/caac.21349
5. Cheng M, Jolly S, Quarshie WO, Kapadia N, Vigneau FD, Spring Kong FM. Modern radiation further improves survival in non-small cell lung cancer: an analysis of 288,670 Patients. *J Cancer.* (2019) 10:168. doi: 10.7150/jca.26600
6. Wang W, Huang L, Jin JY, Jolly S, Zang Y, Wu H, et al. IDO immune status after chemoradiation may predict survival in lung cancer patients. *Cancer Res.* (2018) 78:809–16. doi: 10.1158/0008-5472.CAN-17-2995
7. Lin M, Stewart DJ, Spitz MR, Hildebrandt MA, Lu C, Lin J, et al. Genetic variations in the transforming growth factor-beta pathway as predictors of survival in advanced non-small cell lung cancer. *Carcinogenesis.* (2011) 32:1050–6. doi: 10.1093/carcin/bgr067
8. Bellam N, Pasche B. TGF- β signaling alterations and colon cancer. *Cancer Genetics.* (2010) 85–103.
9. Javle M, Li Y, Tan D, Dong X, Chang P, Kar S, et al. Biomarkers of TGF- β signaling pathway and prognosis of pancreatic cancer. *PLoS ONE.* (2014) 9:e85942. doi: 10.1371/journal.pone.0085942
10. Chapet O, Kong FM, Quint LE, Chang AC, Ten Haken RK, Eisbruch A, et al. CT-based definition of thoracic lymph node stations: an atlas from the University of Michigan. *Int J Radiat Oncol Biol Phys.* (2005) 63:170–8. doi: 10.1016/j.ijrobp.2004.12.060
11. Kong FM, Hayman JA, Griffith KA, Kalemkerian GP, Arenberg D, Lyons S, et al. Ten Haken, Final toxicity results of a radiation-dose escalation study in patients with non-small-cell lung cancer (NSCLC): predictors for radiation pneumonitis and fibrosis. *Int J Radiat Oncol Biol Phys.* (2006) 65:1075–86. doi: 10.1016/j.ijrobp.2006.01.051
12. Team RC. *R Language Definition*. Vienna: R foundation for statistical computing (2000).

13. Lin DY, Wei L-J. The robust inference for the Cox proportional hazards model. *J Am Stat Assoc.* (1989) 84:1074–8. doi: 10.1080/01621459.1989.10478874
14. Ishwaran H, Kogalur UB, Blackstone EH, Lauer MS. Random survival forests. *Ann Appl Stat.* (2008) 2:841–60. doi: 10.1214/08-AOAS169
15. Hill W, Robertson A. Linkage disequilibrium in finite populations. *Theoret Appl Genet.* (1968) 38:226–31. doi: 10.1007/BF01245622
16. Kattan MW, Hess KR, Beck JR. Experiments to determine whether recursive partitioning (CART) or an artificial neural network overcomes theoretical limitations of Cox proportional hazards regression. *Comput Biomed Res.* (1998) 31:363–73. doi: 10.1006/cbmr.1998.1488
17. Gerds TA, Kattan MW, Schumacher M, Yu C. Estimating a time-dependent concordance index for survival prediction models with covariate dependent censoring. *Stat Med.* (2013) 32:2173–84. doi: 10.1002/sim.5681
18. Kohavi R. A study of cross-validation and bootstrap for accuracy estimation and model selection. *IJCAI.* (1995) 14:1137–45.
19. Mann M, Crouse D, Prentice E. Appropriate animal numbers in biomedical research in light of animal welfare considerations. *Lab Anim Sci.* (1991) 41:6–14.
20. Kawaguchi T, Takada M, Kubo A, Matsumura A, Fukai S, Tamura A, et al. Performance status and smoking status are independent favorable prognostic factors for survival in non-small cell lung cancer: a comprehensive analysis of 26,957 patients with NSCLC. *J Thorac Oncol.* (2010) 5:620–30. doi: 10.1097/JTO.0b013e3181d2dcd9
21. Lin M, Stewart DJ, Spitz MR, Hildebrandt MA, Lu C, Lin J, et al. Genetic variations in the transforming growth factor beta pathway as predictors of survival in advanced non-small cell lung cancer. *Carcinogenesis.* (2011) 32:1050–6. doi: 10.1158/1538-7445.AM10-1675
22. Miyazawa K, Shinozaki M, Hara T, Furuya T, Miyazono K. Two major Smad pathways in TGF- β superfamily signalling. *Genes Cells.* (2002) 7:1191–204. doi: 10.1046/j.1365-2443.2002.00599.x
23. Weiss A, Attisano L. The TGF β superfamily signaling pathway. *Wiley Interdiscip Rev Dev Biol.* (2013) 2:47–63. doi: 10.1002/wdev.86
24. Mueller TD, Nickel J. Promiscuity and specificity in BMP receptor activation. *FEBS Lett.* (2012) 586:1846–59. doi: 10.1016/j.febslet.2012.02.043
25. Nickel J, Mueller TD. Specification of BMP Signaling. *Cells.* (2019) 8:1579. doi: 10.3390/cells8121579
26. Massagué J. TGF β signalling in context. *Nat Rev Mol Cell Biol.* (2012) 13:616–30. doi: 10.1038/nrm3434
27. de Caestecker MP, Piek E, Roberts AB. Role of transforming growth factor- β signaling in cancer. *J Natl Cancer Inst.* (2000) 92:1388–402. doi: 10.1093/jnci/92.17.1388
28. Zinski J, Tajer B, Mullins MC. TGF-beta family signaling in early vertebrate development. *Cold Spring Harb Perspect Biol.* (2018) 10:a033274. doi: 10.1101/cshperspect.a033274
29. Battle E, Massagué J. Transforming growth factor-beta signaling in immunity and cancer. *Immunity.* (2019) 50:924–40. doi: 10.1016/j.immuni.2019.03.024
30. MacFarlane EG, Haupt J, Dietz HC, Shore EM. TGF-beta family signaling in connective tissue and skeletal diseases. *Cold Spring Harb Perspect Biol.* (2017) 9:a038331. doi: 10.1101/cshperspect.a022269
31. Saito A, Horie M, Nagase T. TGF-beta signaling in lung health and disease. *Int J Mol Sci.* (2018) 19:2460. doi: 10.3390/ijms19082460
32. Boyle EA, Li YI, Pritchard JK. An expanded view of complex traits: from polygenic to omnigenic. *Cell.* (2017) 169:1177–86. doi: 10.1016/j.cell.2017.05.038
33. Gordian E, Welsh EA, Gimbrone N, Siegel EM, Shibata D, Creelan BC, et al. Transforming growth factor beta-induced epithelial-to-mesenchymal signature predicts metastasis-free survival in non-small cell lung cancer. *Oncotarget.* (2019) 10:810–24. doi: 10.18632/oncotarget.26574
34. Chen Y, Zou L, Zhang Y, Chen Y, Xing P, Yang W, et al. Transforming growth factor-beta1 and alpha-smooth muscle actin in stromal fibroblasts are associated with a poor prognosis in patients with clinical stage I-IIIa nonsmall cell lung cancer after curative resection. *Tumour Biol.* (2014) 35:6707–13. doi: 10.1007/s13277-014-1908-y
35. Jurisic V, Vukovic V, Obradovic J, Gulyaeva LF, Kushlinskii NE, Djordjevic N. EGFR polymorphism and survival of NSCLC patients treated with Tkis: a systematic review and meta-analysis. *J Oncol.* (2020) 2020:1973241. doi: 10.1155/2020/1973241
36. Xue SL, Zheng YH, Su HF, Deng X, Zhang XB, Zou CL, et al. Association between single nucleotide polymorphisms of the transforming growth factor-beta1 gene and overall survival in unresectable locally advanced non-small cell lung cancer patients treated with radio (chemo) therapy in a Chinese population. *Med Oncol.* (2013) 30:512. doi: 10.1007/s12032-013-0512-0
37. Yuan ST, Ellingrod VL, Schipper M, Stringer KA, Cai X, Hayman JA, et al. Genetic variations in TGFbeta1, tPA, and ACE and radiation-induced thoracic toxicities in patients with non-small-cell lung cancer. *J Thorac Oncol.* (2013) 8:208–13. doi: 10.1097/JTO.0b013e318274592e
38. Li Q, Yang J, Yu Q, Wu H, Liu B, Xiong H, et al. Associations between single-nucleotide polymorphisms in the PI3K-PTEN-AKT-mTOR pathway and increased risk of brain metastasis in patients with non-small cell lung cancer. *Clin Cancer Res.* (2013) 19:6252–60. doi: 10.1158/1078-0432.CCR-13-1093
39. Wang S, Campbell J, Stenmark MH, Zhao J, Stanton P, Matuszak MM, et al. Plasma levels of IL-8 and TGF-beta1 predict radiation-induced lung toxicity in non-small cell lung cancer: a validation study. *Int J Radiat Oncol Biol Phys.* (2017) 98:615–21. doi: 10.1016/j.ijrobp.2017.03.011
40. Kong FM, Washington MK, Jirtle RL, Anscher MS. Plasma transforming growth factor-beta 1 reflects disease status in patients with lung cancer after radiotherapy: a possible tumor marker. *Lung Cancer.* (1996) 16:47–59. doi: 10.1016/S0169-5002(96)00611-3
41. Zhao L, Sheldon K, Chen M, Yin MS, Hayman JA, Kalemkerian GP, et al. The predictive role of plasma TGF-beta1 during radiation therapy for radiation-induced lung toxicity deserves further study in patients with non-small cell lung cancer. *Lung Cancer.* (2008) 59:232–9. doi: 10.1016/j.lungcan.2007.08.010
42. Milet J, Déhais V, Bourgain C, Jouanolle AM, Mosser A, Perrin M, et al. Common variants in the BMP2, BMP4, and HJV genes of the hepcidin regulation pathway modulate HFE hemochromatosis penetrance. *Am J Hum Genet.* (2007) 81:799–807. doi: 10.1086/520001
43. An P, Wu Q, Wang H, Guan Y, Mu M, Liao Y, et al. Tmprss6, but not Tf, Tfr2 or BMP2 variants are associated with increased risk of iron-deficiency anemia. *Hum Mol Genet.* (2012) 21:2124–31. doi: 10.1093/hmg/dds028
44. Ji Y, Flower R, Hyland C, Saiepour N, Faddy H. Genetic factors associated with iron storage in Australian blood donors. *Blood Transfus.* (2016) 16:123–9. doi: 10.2450/2016.0138-16
45. Langenfeld EM, Langenfeld J. Bone morphogenetic protein-2 stimulates angiogenesis in developing tumors. *Mol Cancer Res.* (2004) 2:141–9.
46. Langenfeld E, Kong Y, Langenfeld J. Bone morphogenetic protein 2 stimulation of tumor growth involves the activation of Smad-1/5. *Oncogene.* (2006) 25:685. doi: 10.1038/sj.onc.1209110
47. Chu H, Luo H, Wang H, Chen X, Li P, Bai Y, et al. Silencing BMP-2 expression inhibits A549 and H460 cell proliferation and migration. *Diagn Pathol.* (2014) 9:123. doi: 10.1186/1746-1596-9-123
48. Yang J, Xu T, Gomez DR, Yuan X, Nguyen Q-N, Jeter M, et al. Polymorphisms in BMP2/BMP4, with estimates of mean lung dose, predict radiation pneumonitis among patients receiving definitive radiotherapy for non-small cell lung cancer. *Oncotarget.* (2017) 8:43080. doi: 10.18632/oncotarget.17904
49. Flanders KC. Smad3 as a mediator of the fibrotic response. *Int J Exp Pathol.* (2004) 85:47–64. doi: 10.1111/j.0959-9673.2004.00377.x
50. Ooshima A, Park J, Kim SJ. Phosphorylation status at Smad3 linker region modulates transforming growth factor-beta-induced epithelial-mesenchymal transition and cancer progression. *Cancer Sci.* (2019) 110:481–8. doi: 10.1111/cas.13922
51. Kang B, Zhao F, Zhang X, Deng X, He X. Association between the interaction of SMAD3 polymorphisms with body mass index and osteoarthritis susceptibility. *Int J Clin Exp Pathol.* (2015) 8:7364. doi: 10.7860/JCDR/2017/22371.10073
52. Shugang X, Hongfa Y, Jianpeng L, Xu Z, Jingqi F, Xiangxiang L, et al. Prognostic value of SMAD4 in pancreatic cancer: a meta-analysis. *Transl Oncol.* (2016) 9:1–7. doi: 10.1016/j.tranon.2015.11.007

53. Ma Y, Yan F, Li L, Liu L, Sun J. Deletion and down-regulation of SMAD4 gene in colorectal cancers in a Chinese population. *Chin J Cancer Res.* (2014) 26:525–31. doi: 10.3978/j.issn.1000-9604.2014.09.02
54. Wu D-M, Zhu H-X, Zhao Q-H, Zhang Z-Z, Wang S-Z, Wang M-L, et al. Genetic variations in the SMAD4 gene and gastric cancer susceptibility. *World J Gastroenterol.* (2010) 16:5635. doi: 10.3748/wjg.v16.i44.5635
55. Yang J, Xu T, Gomez DR, Yuan X, Nguyen QN, Jeter M, et al. Nomograms incorporating genetic variants in BMP/Smad4/Hamp pathway to predict disease outcomes after definitive radiotherapy for non-small cell lung cancer. *Cancer Med.* (2018) 7:2247–55. doi: 10.1002/cam4.1349

Conflict of Interest: The authors declare that the research was conducted in the absence of any commercial or financial relationships that could be construed as a potential conflict of interest.

Copyright © 2021 Zhang, Wang, Pi, Bi, DesRosiers, Kong, Cheng, Yang, Lautenschlaeger, Jolly, Jin and Kong. This is an open-access article distributed under the terms of the Creative Commons Attribution License (CC BY). The use, distribution or reproduction in other forums is permitted, provided the original author(s) and the copyright owner(s) are credited and that the original publication in this journal is cited, in accordance with accepted academic practice. No use, distribution or reproduction is permitted which does not comply with these terms.