



Occurrence of thermophilic *Campylobacter* spp. in pigs and the assessment of biosecurity measures employed at unorganized pig farms in Thrissur, Kerala

R. Vivekanandhan^{*1}, B. Sunil², C. Latha³, K. Vrinda Menon⁴, R. Ambily⁵ and V.L. Gleeja⁶

Department of Veterinary Public Health,
College of Veterinary and Animal Sciences, Mannuthy, Thrissur -680651
Kerala Veterinary and Animal Sciences University, Kerala, India.

Citation: Vivekanandhan, R., Sunil, B., Latha, C., Vrinda Menon, K., Ambily, R. and Gleeja, V.L. 2022. Occurrence of thermophilic *Campylobacter* spp. in pigs and the assessment of biosecurity measures employed at unorganized pig farms in Thrissur, Kerala. *J. Vet. Anim. Sci.* **53**(4): 602-608
DOI: <https://doi.org/10.51966/jvas.2022.53.4.602-608>

Received: 29.04.2022

Accepted: 29.06.2022

Published: 31.12.2022

Abstract

Campylobacter spp. is considered as one of the major causes of foodborne illnesses worldwide. A total of 130 samples including faecal samples (n=40), rectal swabs (n=40) and sewage samples (n=50) were collected from the two unorganized pig farms to study the occurrence of *Campylobacter* spp. The biosecurity measures on the farms were also assessed. An overall occurrence of 26.15 per cent with a higher rate of isolation from rectal swabs (57.5 per cent) than faecal and sewage samples (25 per cent and 2 per cent) were observed. The occurrence of *C. coli* was found to be 55 per cent, while that of *C. jejuni* and *C. coli* was 5 per cent in rectal swabs collected from Farm A. *Campylobacter coli* could be isolated only from the sewage sample from farm B. Direct multiplex PCR screening detected *C. coli* in 32 per cent and 44 per cent of sewage samples from farms A and B, respectively. This indicates that the *Campylobacter* organisms in sewage samples might have attained viable but not culturable form. In both farms, no effective biosecurity measures were followed. The lack of biosecurity measures in farms contributes to the transmission of *Campylobacter* spp. from the environment to the animals. Farm workers of both the farms were unaware of hygienic practices and biosecurity measures. Furthermore, little attention was paid to personal protective measures, which could pose a significant occupational risk of contracting campylobacteriosis, resulting in complex sequelae.

Keywords: Biosecurity, *Campylobacter*, *Campylobacteriosis*, One Health, Pig farm

1. PhD Scholar,
 2. Professor and Head
 3. Director of Academics and Research, Kerala Veterinary and Animal Sciences University, Pookode, Wayanad, Kerala-673576.
 4. Associate Professor.
 5. Assistant Professor, Department of Veterinary Microbiology, College of Veterinary and Animal Sciences, Mannuthy.
 6. Associate Professor and Head, Statistics, College of Veterinary and Animal Sciences, Mannuthy.
- * Corresponding Author: vivekrmv22@gmail.com, Ph: 8056479674

Copyright: © 2022 Vivekanandhan *et al.* This is an open access article distributed under the terms of the Creative Commons Attribution 4.0 International License (<http://creativecommons.org/licenses/by/4.0/>), which permits unrestricted use, distribution, and reproduction in any medium, provided the original author and source are credited.

Campylobacter spp. are often considered to be one of the leading causes of foodborne illnesses in humans and are implicated in approximately 400 to 500 million diarrheal diseases (Ruiz-Palacios, 2007) with serious complications such as Guillain-Barre Syndrome, Miller Fisher Syndrome, Irritable Bowel Syndrome, and Reactive Arthritis (Smith, 2002; Peterson, 1994). Direct contact with farm animals, consumption of raw meat, and handling of contaminated food items are the major risk factors for campylobacteriosis in humans (Kuhn *et al.*, 2017). Campylobacteriosis is a major public health problem with complex epidemiology (Humphrey *et al.*, 2007) and chicken and pigs are the main reservoirs and primary sources of *Campylobacter jejuni* and *Campylobacter coli* infections, respectively in humans. Furthermore, the absence of biosecurity measures on pig farms exposes them to the reservoirs of infection leading to the colonisation of *Campylobacter* in pigs (Brown *et al.*, 2004). To avoid organism contamination and multiplication, strict biosecurity measures are essential (Athulya *et al.*, 2021). Campylobacteriosis remains a bacterial foodborne pathogen that will pose a significant threat to public health in the coming

years (Deepa *et al.*, 2022). Hence, the possible risk of campylobacteriosis in pigs and the entry of *Campylobacter* spp. into the food chain should be viewed seriously. Hence, the present study was conducted to assess the occurrence of *Campylobacter* spp. infection in pigs and biosecurity measures observed if any in two pig farms in Thrissur district, Kerala.

Materials and methods

Sample processing and molecular confirmation

A total of 130 samples including rectal swabs, faecal and sewage samples were collected from September to December, 2019 from two unorganized pig farms in Thrissur, (Table 1). The samples were collected from pigs aged between one to six months. All the samples were transported to the laboratory in a cold chain and immediately processed as per the OIE (2017) guidelines. Rectal and faecal samples were directly streaked on modified charcoal cefoperazone deoxycholate agar (mCCDA) plates, while sewage samples were enriched on charcoal cefoperazone deoxycholate (CCD) broth and incubated at 42°C in a carbon dioxide (CO₂) incubator with

Table 1. Details of samples collected from pig farms

Sample Sources	Pig Farms		Total
	Pig Farm A	Pig Farm B	
Rectal Swabs	20	20	40
Faecal sample	20	20	40
Sewage sample	25	25	50
Total	65	65	130

Table 2. Details of primers and product size

Gene	Primer sequence	Annealing Temperature	Size (bp)	Reference
16S rRNA	F - 5'-GGATGACACTTTTCGGAGC-3'	51.8°C	816	Linton <i>et al.</i> (1996)
	R - 5'-CATTGTAGCACGTGTGTC-3'			
mapA	F - 5'-CTATTTTATTTTGAGTGCTTGTG-3'		589	Denis <i>et al.</i> (1999)
	R - 5'-GCTTTATTTGCCATTTGTTTTATTA-3'			
ceuE	F - 5'-AATTGAAAATTGCTCCAAC TATG-3'		462	Denis <i>et al.</i> (1999)
	R - 5'-TGATTTTATTATTTGTAGC AGCG-3'			

ten per cent CO₂ for 48 hours before streaking on mCCDA plates. Genomic DNA extracted from enriched sewage samples by snap chill method was used for confirming the isolates by performing a multiplex polymerase chain reaction (mPCR) (Englen and Kelley, 2000) targeting the 16S rRNA gene for *Campylobacter* genus, *mapA* gene for *C. jejuni* and *ceuE* gene for *C. coli*. Information of primers, annealing temperature and product sizes are shown in Table 2. The *C. jejuni* (NCTC 11168) and *C. coli* (NCBI accession no: OM810312) were used as positive controls in mPCR. Physico-chemical parameters such as pH, dissolved oxygen (DO), total dissolved solids (TDS), conductivity, temperature, and salinity and biochemical oxygen demand (BOD) of sewage samples collected from both the farms were analysed (APHA, 2005).

Knowledge about personal hygiene measures and farm biosecurity measures among pig farm workers were analysed. A Chi-square test using SPSS version 24.0 software was employed to analyse the difference in the occurrence of *Campylobacter* spp. between farms and between different sources of samples.

Assessment of biosecurity measures in pig farms

Biosecurity measures such as fencing, over nets, flies and rodent traps, disinfectant dips for vehicles and workers, water source, feeding trough, feed accessibility to scavenging birds and feeding practices, movement of pet/stray animals inside farms, visitor's records and farm worker's hygienic practices were analysed in both the farms to determine the possibilities of transmission of *Campylobacter* spp. from the environmental reservoirs to the pigs.

Results and discussion

On molecular confirmation of *Campylobacter* genus and species by mPCR assay, all 34 isolates yielded an amplicon of 816 bp size, specific for *Campylobacter* genus. An amplicon of 462 bp size, specific for *C. coli* was obtained with 94.12 per cent of isolates while, 2.94 per cent of isolates generated an amplicon of 589 bp size, specific for *C. jejuni*.

2.94 per cent of the isolates yielded amplicons of 462 bp and 589 bp (combination of *C. jejuni* and *C. coli*) (Fig. 1).

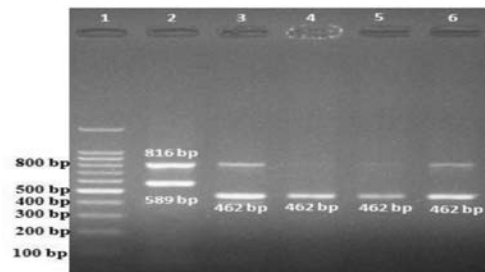


Fig.1 Amplicons of mPCR

Genus: 16S rRNA (816 bp)
Lane 1: 100 bp plus ladder
Lane 2: *C. jejuni* positive control (589 bp)
Lane 3: *C. coli* positive control (462 bp)
Lane 4-6: Field isolates *C. coli* (462 bp)

The occurrence of *Campylobacter* spp. in the pig farms was 26.15 per cent and was comparable to the findings of Muralikrishna (2018) and Karikari *et al.* (2017), who reported an overall occurrence of 27.5 per cent and 28.7 per cent from pig farms in Kerala and Ghana, respectively. However, no significant difference was observed in the occurrence of *Campylobacter* in these two farms. An overall occurrence of 57.5 per cent of *Campylobacter* spp. were observed from the rectal swabs in this study. It is consistent with the findings of Gebreyes *et al.* (2005), who found that 55.8 per cent of pigs in the United States harboured *C. coli*. The rate of isolation of *C. coli* from rectal swabs was significantly higher ($p < 0.001$) compared to the isolation rate of *C. jejuni* and/or a combination of *C. jejuni* and *C. coli* from both farms. Moreover, the rate of isolation of *Campylobacter* spp. from rectal swabs was comparatively higher than those from faecal samples. In this context, it is worth noting that *C. coli* is a human pathogen more commonly implicated in indigenously acquired foodborne illnesses than *Salmonella enterica* serovar Typhimurium (Tam *et al.*, 2003). Occurrence of *Campylobacter* spp. from different sources of both the farms are represented in Table 3.

Table 3. Details of *Campylobacter* spp. isolates from different sources

	<i>Campylobacter</i> spp.	Occurrence & Source			Overall occurrence
		Rectal swabs	Faecal samples	Sewage samples	
Farm (A)	<i>C. jejuni</i>	0	5	0	1.53
	<i>C. coli</i>	55	20	0	23.07
	Combination of <i>C. jejuni</i> & <i>C. coli</i>	5	0	0	1.53
	Occurrence	60 ^a	25	0	26.15 ^{ns}
Farm (B)	<i>C. jejuni</i>	0	0	0	0
	<i>C. coli</i>	55	25	4	26.15
	Combination of <i>C. jejuni</i> & <i>C. coli</i>	0	0	0	0
	Occurrence	55 ^a	25	4 ^b	26.15 ^{ns}
Overall occurrence		57.5	25	2	26.15

^{a, b} significant at 0.01 level; ^{ns} not significant

In this study, the direct screening of enriched sewage samples by mPCR detected *C. coli* in 32 per cent and 44 per cent on farm A and B, respectively. However, *C. coli* could be cultured only from 4 per cent of sewage samples from the farm B (Table 3). *Campylobacter* might be difficult to isolate in environmental samples (Dyke *et al.*, 2010). This might be due to poor cell recovery using standard selective culture techniques, low concentrations of often damaged or stressed cells, and the development of viable but non-culturable cells (VBNC) (Dyke *et al.*, 2010). When *Campylobacter* is found outside the gastrointestinal tract and exposed to the environment, it quickly develops into VBNC forms (Rollins and Colwell, 1986). Although VBNC form of *Campylobacter* spp. are not easily discovered using standard culture techniques, their pathogenicity is equivalent to that of culturable forms (Thomas *et al.*, 1998).

The physico-chemical parameters of the sewage samples from both the farms were within normal limits, except for BOD₅ (Table 4), which was much higher than the maximum permitted level of 30 mg/L according to Indian Standards for Quality of Effluents IS:10500, Part A (CPCB, 2019) and can lead to environmental pollution around farms if discharged untreated.

Effective biosecurity measures such as disinfection dips, fencing to restrict visitor's entry, and measures to deter/control scavenging birds, pests and rodents were absent on both the farms (Table 5; fig. 2), which led to the easy accessibility of feeding troughs

Table 4. Physico-chemical parameters of sewage samples

S.No.	Parameters	Farm A	Farm B
1.	pH	7.104	7.753
2.	Salinity (PSU)	6.565	4.113
3.	TDS (ppt)	3.69	1.4
4.	DO (mg/L)	11.81	9.54
5.	Conductivity (µs/cm)	11.70	7.38
6.	BOD (mg/L)	900	800
7.	Temperature (°C)	29.2	30.1
8.	Resistance Ω/cm	134.5	84.21

and sources of drinking water to cranes and crows. Crow mobbing in farm settings (Houston, 1977) and subsequent contamination of the farm environment with their faeces may lead to cross-transmission of *Campylobacter* spp. among animals and occupational groups (Muralikrishna *et al.*, 2018). Effective implementation of biosecurity measures is vital in controlling campylobacteriosis in pig farms. Feeding of raw chicken waste observed on both the farms can be a potential source of *Campylobacter* spp. infection and throws light on the importance of feeding cooked chicken waste, as a majority of caecal samples taken from commercial and backyard poultry settings revealed the presence of *C. coli* (Rangaraju *et al.*, 2022).

Farmworkers in both farms were not using personal protective equipment and were not aware of personal hygiene measures (Table 5). Farm owners were advised to give adequate training to employees on personal hygiene and implement strict biosecurity measures to

Table 5. Biosecurity measures followed in pig farms

S. No	Biosecurity Measures	Farm A	Farm B
1.	Fencing around farm	No	No
2.	Effective over nets	No	No
3.	Fly and rodent traps	No	No
4.	Disinfectant dips at farm and animal area entry	No	No
5.	Accessibility of water source and feeding trough to wild birds	Yes	Yes
6.	Movement of pet animals inside farm premises	Yes	No
7.	Visitor's record	No	No
Farm worker's hygienic practices/personnel protection			
1.	Wearing gloves	No	No
2.	Wearing gumboots	No	No
3.	Wearing overalls	No	No
4.	Washing hands and legs with soap before and after farm operations	No	No
5.	The habit of using hand sanitizers in farm premises	No	No

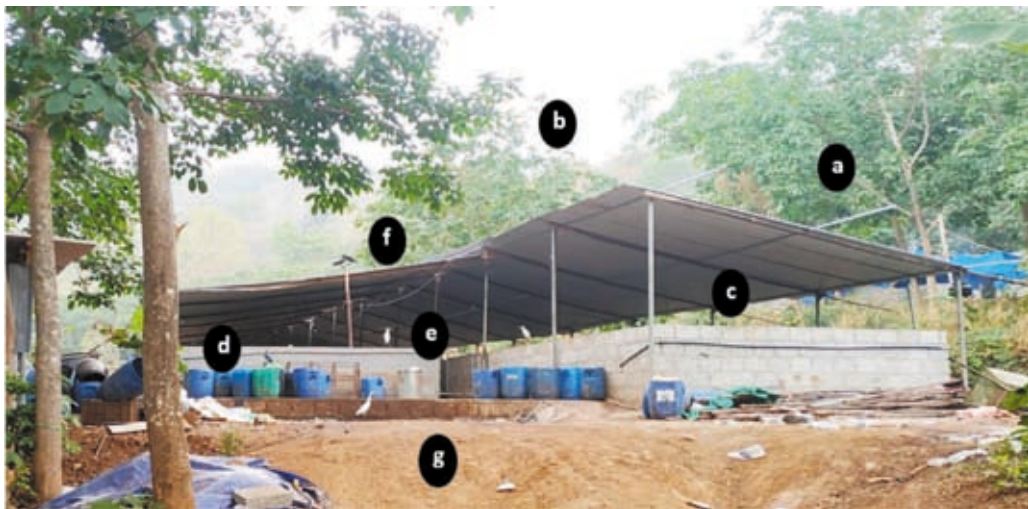


Fig. 2. Biosecurity breaches in pig farm: a) No fencing on the farm to prevent entry of unauthorized persons, stray and wild animals, b) No over nets to prevent the entry of wild birds c) No fly and rodent traps, d) Animal feeding and water trough were easily accessible to wild birds, e & f) Accessibility of animal area to wild birds such as crane and crow and g) Disinfection dips not installed at the entry points.

control the occurrence of campylobacteriosis in pigs.

Conclusion

Campylobacter spp. is one of the leading causes of foodborne gastroenteritis worldwide. The present study pointed out the predominance of *C. coli* on both the farms and lack of sewage treatment plant, biosecurity measures and personal protection equipments for pig farm workers. It is therefore advised to establish sewage treatment plants and adequate biosafety measures in pig farms and conduct awareness programmes for farm

workers to reduce the spread of *Campylobacter* spp. among animals and subsequent spread of infection to humans through a holistic One Health approach.

Acknowledgement

Financial assistance provided by the Indian Council of Medical Research (ICMR) through Junior Research Fellow (JRF) for the research work is gratefully acknowledged.

Conflict of interest

The authors declare no conflict of interest.

References

- APHA. 2005. Standard Methods for the Examination of Water and Wastewater. In: Andrew D. Eaton, Eugene W. Rice, Lenore S. Clesceri, Mary Ann H. Franson, Arnold E. Greenberg (21st Ed.), American Public Health Association, Washington DC. 158p.
- Athulya, T. R., Latha, C., Sunil, B., Deepa, J. and Shynu, M. 2021. Occurrence of *Campylobacter* spp. in duck and associated environmental samples in Thrissur district. *J. Vet. Anim. Sci.* **52**(4): 325-330.
- Brown, P.E., Christensen, O.F., Clough, H.E., Diggle, P.J., Hart, C.A., Hazel, S., Kemp, R., Leatherbarrow, A.J., Moore, A., Sutherst, J., Turner, J., Williams, N.J., Wright, E.J., French, N.P. 2004. Frequency and spatial distribution of environmental *Campylobacter* spp. *Appl. Environ. Microbiol.* **70**(11): 6501-6511.
- CPCB (Central Pollution Control Board). 2019. General standards for discharge of environmental pollutants part-A: effluents. Central Pollution Control Board (Online) 545-548. Available: <https://cpcb.nic.in/displaypdf.php?id=R2VuZXJhbFN0YWw5kYXJkcy5wZGY=> [23-10-2019].
- Deepa, J., Sunil, B., Latha, C., Vrinda, K. M., Mini, M. and Aravindakshan, T. V. 2022. Prevalence of *Campylobacter* spp. in marine fishes, crustaceans and molluscs in Kozhikode district, Kerala. *J. Vet. Anim. Sci.* **53**(1): 32-38.
- Denis, M., Soumet, C., Rivoal, K., Ermel, G., Blivet, D., Salvat, G. and Colin, P. 1999. Development of a multiplex PCR assay for simultaneous identification of *Campylobacter jejuni* and *C. coli*. *Lett. Appl. Microbiol.* **29**(6): 406-410.
- Dyke, V.M.I., Morton, V.K., McLellan, N.L. and Huck, P.M. 2010. The occurrence of *Campylobacter* in river water and waterfowl within a watershed in southern Ontario, Canada. *J. Appl. Microbiol.* **109**(3): 1053-1066.
- Englen, M.D. and Kelley, L.C. 2000. A rapid DNA isolation procedure for the identification of *Campylobacter jejuni* by the polymerase chain reaction. *Lett. Appl. Microbiol.* **31**(6): 421-426.
- Gebreyes, W.A., Thakur, S. and Morrow, W.M. 2005. *Campylobacter coli*: prevalence and antimicrobial resistance in antimicrobial-free (ABF) swine production systems. *J. Antimicrob. Chemother.* **56**(4): 765-768.
- Houston, D. 1977. The effect of Hooded Crows on hill sheep farming in Argyll, Scotland: the food supply of Hooded Crows. *J. Appl. Eco.* **1**: 1-15.
- Humphrey, T., O'Brien, S., Madsen, M. 2007. *Campylobacters* as zoonotic pathogens: a food production perspective. *Int. J. Food. Microbiol.* **117**(3): 237-57.
- Karikari, A.B., Obiri-Danso, K., Frimpong, E.H. and Krogfelt, K.A. 2017. Antibiotic resistance of *Campylobacter* recovered from faeces and carcasses of healthy livestock. *Biomed Res. Int.* Article ID 4091856: 9p.
- Kuhn, K.G., Falkenhorst, G., Emborg, H.D., Ceper, T., Torpdahl, M., Krogfelt, K.A., Ethelberg, S. and Mølbak, K. 2017. Epidemiological and serological investigation of a waterborne *Campylobacter jejuni* outbreak in a Danish town. *Epidemiol. Infect.* **145**(4): 701-709.
- Linton, D., Owen, R.J. and Stanley, J. 1996. Rapid identification by PCR of the genus *Campylobacter* and five *Campylobacter* species enteropathogenic for man and animals. *Res. Microbiol.* **147**(9): 707-718.
- Muralikrishna, P. 2018. Prevalence of *Campylobacter* spp. in swine production facilities and pork processing lines. *M.V.Sc thesis*, Kerala Veterinary and Animal Sciences University, Pookode,

pp. 43

- Muralikrishna, P., Sunil, B., Menon, V.K., Jolly, D., Latha, C., Kumar, A and Saifudeen, S.M. 2018. Colonization in Piglets by *Campylobacter* Species and its Antimicrobial Profile. *Int. J. Curr. Microbiol. App. Sci*, **7**(7): 3801-3807.
- OIE, [World Organisation for Animal Health]. 2017. Terrestrial Manual. (Chap. 2.9.3.). *Infection with Campylobacter jejuni* and *C. coli*. OIE, Paris. 9p.
- Peterson, M.C., 1994. Clinical aspects of *Campylobacter jejuni* infections in adults. *West J. Med.* **161**(2): 148p.
- Rangaraju, V., Malla, B.A., Milton, A.A.P., Madesh, A., Madhukar, K.B., Kadwalia, A., Vinodhkumar, O.R., Kumar, M.S. and Dubal, Z.B. 2022. Occurrence, antimicrobial resistance and virulence properties of thermophilic *Campylobacter coli* originating from two different poultry settings. *Gene Rep.* **27**: 1-7.
- Rollins, D.M. and Colwell, R.R. 1986. Viable but nonculturable stage of *Campylobacter jejuni* and its role in survival in the natural aquatic environment. *Appl Environ. Microbiol.* **52**(3): 531-538.
- Ruiz-Palacios, G. M. 2007. The health burden of *Campylobacter* infection and the impact of antimicrobial resistance: playing chicken. *Clin. Infect. Dis.* **44**(5): 701-703.
- Smith, J.L., 2002. *Campylobacter jejuni* infection during pregnancy: long-term consequences of associated bacteraemia, Guillain-Barré syndrome, and reactive arthritis. *J. Food Prot.* **65**(4): 696-708.
- Tam, C.C., O'brien, S.J., Adak, G.K., Meakins, S.M. and Frost, J.A. 2003. *Campylobacter coli*-an important foodborne pathogen. *J. Infect.* **47**(1): 28-32.
- Thomas, C., Gibson, H., Hill, D.J. and Mabey, M., 1998. *Campylobacter* epidemiology: an aquatic perspective. *J. Appl. Microbiol.* **85**(S1): 168S-177S. ■