

Histological Studies of Snails at Different Periods of Their Life Activity

I. S. Danilova¹ , T. I. Fotina² , T. M. Danilova³ 

¹State Poultry Research Station of National Academy of Agrarian Sciences of Ukraine, Tsentralna Str., 20, v. Birky, Kharkiv region, 63421, Ukraine

²Sumy National Agrarian University, G. Kondratieva Str., 160, Sumy, 40021, Ukraine

³State Biotechnological University, Akademichna Str., 1, v. Mala Danylivka, Kharkiv region, 62341, Ukraine

Article info

Received 07.09.2022

Received in revised form
11.10.2022

Accepted 12.10.2022

Correspondence author

Iryna Danilova

Tel.: +38-067-30-59-351

E-mail: irrulik@meta.ua

2022 Danilova I. et al. This is an open-access article distributed under the Creative Commons Attribution License, which permits unrestricted use, distribution, and reproduction in any medium, provided the original author and source are credited.



Contents

1. Introduction	18
2. Materials and methods	19
3. Results and discussion	19
4. Conclusions	21
References	21

Abstract

Large species of terrestrial mollusks are used for human consumption and are bred for this purpose. They have become a part of national cuisine in many countries. Histology is used in many fields of humane and veterinary medicine. Its main essence is that this method can diagnose the presence of formations and inclusions. It is used to determine this process's structure and stage of development. Samples of different tissues can be used as material for histological examination. The specialist analyzes and describes the histological preparations obtained after processing the material. Thus, we proposed a histological method of studying snails. This method can provide the data of snails' state as a whole. Snails of the species *Helix aspersa maxima*, *Helix aspersa muller*, and *Helix pomatia* were the material for the study. Ten snails of each species were selected for the experiment at different periods: immediately after hibernation, five days after wakening, 14 days after wakening, and at the time of their active life – in July. First, we conducted histological studies of snails during their active life, i.e., in the summer months. Therefore, for this purpose, snails for the experiment were taken in July. It was determined that if the snail eats and has an everyday life, its digestive gland generally consists of digestive tubules separated by intertubular connective tissue containing hemolymphatic sinuses and hemocytes. Thus, in our research, we studied the structure of the digestive gland. A circular muscle layer surrounds each tubule. There are three different cell types in the epithelium lining the tubules of the digestive glands, which differentiate into digestive cells, calcium cells, and excretory cells. Digestive cells are the most numerous cellular component of the tubular epithelium of the digestive gland. Basally located nuclei of digestive cells have a round or oval shape. During the rest period, the digestive gland of snails is characterized by a complete loss of digestive function and the transformation of digestive cells into excretory ones. Metabolic products are not excreted into the environment. When they accumulate, they fill all cavities in the body of snails, namely the lumens of glandular tubules, excretory ducts, stomach, and intestines. Food intake in snails increases the level of metabolism. It stimulates the differentiation of digestive cells, the functional activity of excretory cells, and the volume of excretory products. It leads to the complete liberation of the digestive tract from accumulated excretion products during the rest period. The structure of the digestive gland is completely restored.

Keywords: terrestrial mollusks, periods of the year, laboratory tests, cell structure, digestive tract.

Citation:

Danilova, I. S., Fotina, T. I., & Danilova, T. M. (2022). Histological Studies of Snails at Different Periods of Their Life Activity. *Ukrainian Journal of Veterinary and Agricultural Sciences*, 5(3), 18–22.

1. Introduction

Terrestrial mollusks are an ecological group of creatures that makes up about 35,000 modern species. They belong to the Gastropoda class and are an important part of many ecosystems as they process much of the dead organic matter, distributing some substances and forming the diet basis for many animals (Köse et al., 2015; Peña et al., 2017; Cilia & Fratini, 2018; Becker et al., 2021).

Large species of terrestrial mollusks are used for human consumption and are bred for this purpose. They have become a part of national cuisine in many countries. Terrestrial mollusks are the most successful model objects for many studies due to limited mobility and settlement (both active

and passive) (Hamlet et al., 2012; Lobo-da-Cunha, 2019; Noothuan et al., 2021).

Improving the quality of meat products produced in unstable raw materials conditions requires solving several practical tasks in the field of veterinary medicine. There is a search for modern, scientifically based, objective, and accessible laboratory methods for determining the freshness of snails. Another issue, namely, the study of some processes concerning snails, is partially studied (Hamed et al., 2007; Noothuan et al., 2021).

Thus, we proposed a histological method of studying snails. This method can provide the data of snails' state as a whole.

Histology is a branch of biology that studies the structure, life activity, and development of living organism tis-

sues, i.e., the structure at the tissue level. With the help of histology, it is possible to study the development and differentiation of cells and tissues, adaptation at the cellular and tissue levels, the problems of regeneration of tissues and organs, etc. (Mohammadein et al., 2013; Ali & Said, 2019).

Histological examination is a very accurate method of laboratory diagnostics, which studies the changes in tissues at the cellular level under a microscope. This method is one of the most effective and modern methods of diagnostics (Habib, 2018). It is complex and involves different technologies of material processing and different methods of microscopy. Histology is used in many fields of humane and veterinary medicine (Parvate & Thayi, 2017). Its main essence is that this method can diagnose the presence of formations and inclusions. It is used to determine this process's structure and stage of development. Samples of different tissues can be used as material for histological examination. The specialist analyzes and describes the histological preparations obtained after processing the material (Pirger et al., 2004; Amal & Abdel-Rahman, 2020).

DSTU 7353:2013 "Meat. Method of histological determination of freshness and degree of ripening" was developed by the staff of the Institute of Food Resources of the National Academy of Agrarian Sciences (IFR NAAS) to increase the objectivity of the examination. It describes the essence of the method; measuring equipment, test equipment, ancillary equipment, materials, and reagents; rules for reagents preparation, selection and preparation of a test sample for the research; research process; the processing of results; registration of research results, safety and personnel requirements. However, due to this DSTU, it is impossible to study and determine all processes occurring in the body of snails (DSTU 7353: 2013).

With the help of this research, it is possible to determine the stage of the digestive gland, its structure, functioning, and the strategy for using snails in the future (Hamed et al., 2007).

Nowadays, a detailed ultrastructural study of snails and the study of changes in organs at different periods remain relevant.

We decided to study the structure of digestive cells in snails at different periods after waking. It helps to differentiate and analyze them according to specially developed and scientifically sound morphological criteria.

2. Materials and methods

Snails of the species *Helix aspersa maxima*, *Helix aspersa muller*, and *Helix pomatia* were the material for the study. Ten snails of each species were selected for the experiment at different periods: immediately after hibernation, five days after waking, 14 days after waking, and at the time of their active life – in July.

Before a histological examination, pieces of organs were carefully removed and fixed in a 10 % formalin solution. They were washed with water from the fixative. Dehydration was performed in alcohols of different strengths: 70 °C, 80 °C, 90 °C, 96 °C and in absolute alcohol for 12 hours.

Then the material was kept in a solution of alcohol with chloroform (1:1) for 30 minutes, in chloroform for 1 hour, and in chloroform with paraffin (1:1) for 1 hour in a thermostat at 37 °C.

Paraffin was poured into a thermostat at 57 °C for 15 minutes each.

Histological sections were made on a rotary microtome MPS-2 3–4 µm thick and stained with hematoxylin-eosin. For this purpose, sections were deparaffinized in xylene for 20 minutes, dehydrated with 96 °C alcohol, washed with distilled water for 1 minute, and stained with hematoxylin for 10 minutes. Then they were washed with tap water, differentiated in 1 % sulfuric acid solution, washed with water, stained with 1 % eosin solution, washed with distilled water, and dehydrated with 96 °C alcohol. In the last stage, they were put in a 25 % polystyrene solution and covered with a cover glass.

Preparations stained with hematoxylin-eosin were subjected to review microscopy to assess the histoarchitectonics of the digestive gland under the microscope Axioskop 40 (Zeiss).

It should also be noted that the histological picture in analyzing experimental preparations from different species of snails was the same. Thus, the type of snail did not affect the study.

3. Results and discussion

First, we conducted histological studies of snails during their active life, i.e., in the summer months. Therefore, for this purpose snails for the experiment were taken in July.

The digestive gland of mollusks is involved in the extracellular and intracellular digestion of food material, absorption of nutrients, storage of lipids, glycogen, and minerals, and plays an essential role in detoxification.

It was determined that if the snail eats and has an everyday life, its digestive gland generally consists of digestive tubules separated by intertubular connective tissue containing hemolymphatic sinuses and hemocytes. Thus, in our research, we studied the structure of the digestive gland.

A circular muscle layer surrounds each tubule. There are three different cell types in the epithelium lining the tubules of the digestive glands, which differentiate into digestive cells, calcium cells, and excretory cells.

Digestive cells are the most numerous cellular component of the tubular epithelium of the digestive gland. Basally located nuclei of digestive cells have a round or oval shape (Fig. 1).

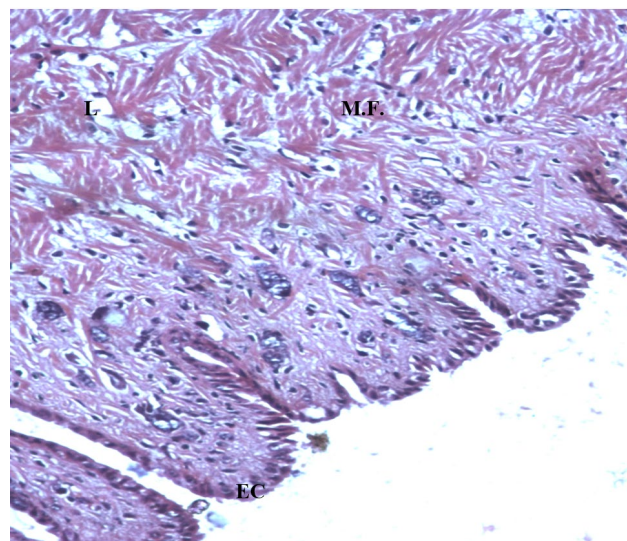


Fig. 1. Histological section of *Helix pomatia* snail in July. Magnification 10×/0.25. L – lumen, M.F. – muscle fibers, E.C. – epithelial cover

Figure 1 shows that muscle fibers surround the digestive tubules. Each tubule has a lumen and well-defined epithelial cover.

Digestive cells are the main cellular component of the digestive tubules of the gland, and they are involved in critical morphofunctional changes following the digestive activity of the snail. They are round or oval and have one nucleolus. They contain two types of granules, shown in Fig. 2.

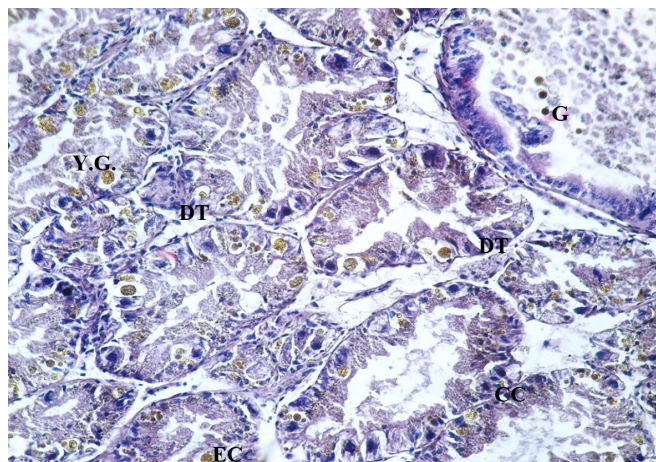


Fig. 2. Digestive gland of *Helix aspersa muller* snail in summer. Magnification $10\times/0.25$. D.T. – digestive tubules, CC – calcium cells, G.G. – green granules, Y.G. – yellow granules, E.C. – excretory cells

Green granules are mainly in the vacuoles and are limited to the distal edge of the cells, and yellow granules - are in the basal area.

Calcium cells are less involved in the digestive process compared to other cells. They are located either separately or in pairs in the corners of the tubules and have a pyramidal shape.

Excretory cells have a spherical shape. They are characterized by their presence in the vacuole and occupy almost their entire volume.

Thin cells are rarely observed in microscopic specimens. They are distributed randomly among other cell types.

During the rest period, the digestive gland of snails is characterized by a complete loss of digestive function and the transformation of digestive cells into excretory ones. Metabolic products are not excreted into the environment. When they accumulate, they fill all cavities in the body of snails, namely the lumens of glandular tubules, excretory ducts, stomach, and intestines (Fig. 3).

There is a gradual restoration of digestive cell function and digestive processes in snails that wake up after anabiosis. Under the influence of digestive enzymes, the excretory mass accumulated during anabiosis is broken down, liquefied, and excreted into the environment. There are also different types of hemocytes identified in the vacuoles. They can be of different shapes: round, oval, or pear-shaped, with a large nucleus, and occupy almost the entire volume of the vacuole (Fig. 4).

Food intake in snails increases the level of metabolism. It stimulates the differentiation of digestive cells, the functional activity of excretory cells, and the volume of excretory products. It leads to the complete liberation of the digestive tract from accumulated excretion products during the rest period. The structure of the digestive gland is wholly restored (Fig. 5).

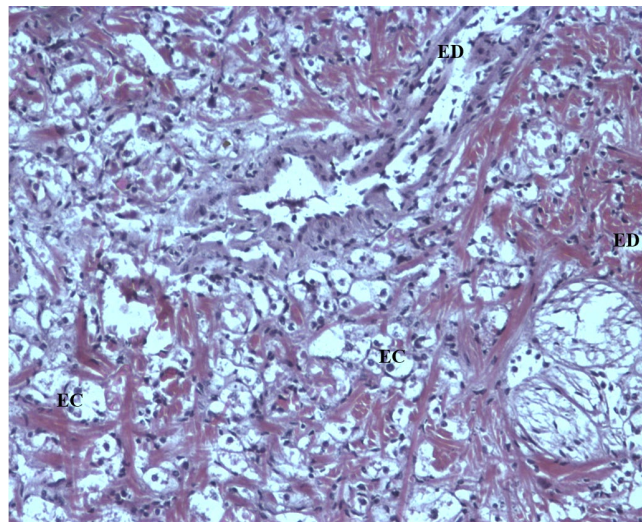


Fig. 3 Histological section of the *Helix aspersa maxima* snail immediately after waking. Magnification $10\times/0.25$. E.C. – excretory cells, E.D. – excretory duct.

Fourteen days after anabiosis, cells of the digestive tubules completely recovered. They have a well-defined shape. Digestive cells are packed with green and yellow granules. Hemocytes are partially observed.

The hepatopancreas (digestive gland) of mollusks is a multifunctional organ. According to some authors, it performs such functions as food uptake, extracellular and intracellular digestion, secretion, excretion, and osmoregulation, and it plays an essential role in detoxification. The digestive glands of mollusks are known as target organs for toxicants. The changes in cytoarchitectonics of the digestive gland in snails are used as a biomarker of induced toxicity. Thus, any structural damage to the digestive gland affects animals different.

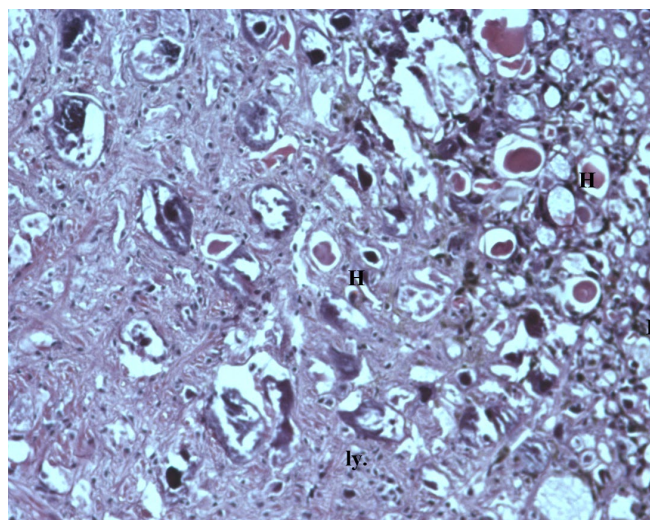


Fig. 4 Histological section of the *Helix pomatia* snail five days after waking. Magnification $10\times/0.25$. H – hemocytes, D.C. – digestive cells.

It was found that the digestive gland of snails is represented by three types of cells: digestive, excretory, and calcium. Their ratio is different and depends on the stage of the snail's life.

There is a standard 19496-2013 called “Meat and meat products. The method of histological examination”. It is used only in Armenia, Kazakhstan, Moldova, and other

countries. It is used for meat of all slaughtered animals and poultry, meat products, and canned meat. However, only due to the histological method it is possible to determine the freshness and degree of meat maturation and the structure and composition of meat products.

Therefore, the authors proposed this method to determine the state of the digestive gland in snails to obtain data on their further use. In this case, the histological method is based on the determination of microstructural parameters of the digestive gland, identification of the components of the analyzed samples following their microstructural features, and the compliance of these components to histological specimens. The study of the digestive gland characterizes the state of the snail as a whole.

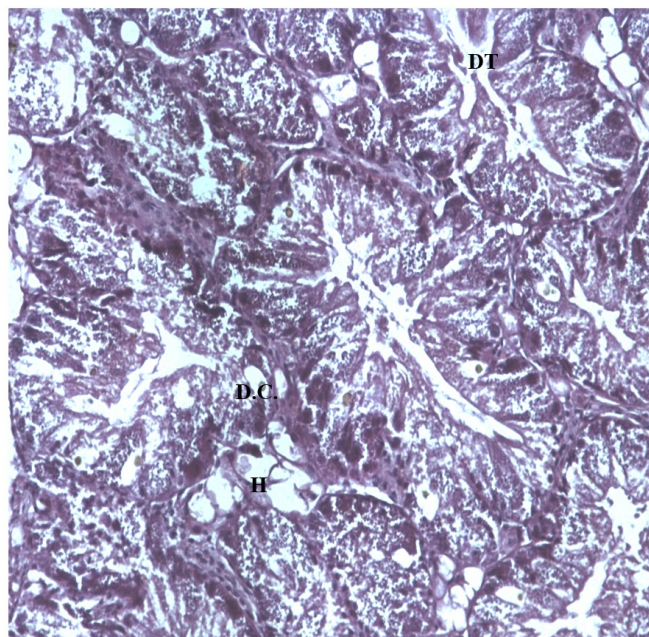


Fig. 5. Histological section of the *Helix muller* snail 14 days after wakening. Magnification 10×/0.25. D.T. – digestive tubules, D.C. – digestive cells, H – hematocytes.

The disadvantage of this method is that it is pretty expensive. It requires special equipment (materials, reagents, equipment, etc.) and a well-qualified specialist with appropriate education.

According to some authors, bioindication of freshwater pollution can be carried out based on the histopathological examination of the organs and tissues of mollusks, namely ampullaria. Therefore, the prospect of further research will be the study of *Helix aspersa maxima* snails, *Helix aspersa muller* snails, and *Helix pomatia* snails as bioindicators of the environment.

4. Conclusions

Histological studies confirm the possibility of their use to study microstructural changes in the organs of snails at different stages of their life. Therefore, it is essential to conduct research to identify morphological changes in the organs during hibernation and at different periods after snails' waking and compare the results. The digestive gland of mollusks is one of the organs that can be used as a marker in various types of research. Histological studies of snails at different periods of life can be studied on one species, as the type of snail does not affect the result. Studying the diges-

tive gland of snails at the histological level makes it possible to determine its state and the possibility of using snails for food. We found that it is possible to use snail meat for food only 14 days after the anabiotic state. This research method can be used as one of the methods of application in some pathological assumptions about snails. Data obtained by the histological method can be used to study snails' digestive glands for control and their use in manufacturing various dishes.

Conflict of interest

The authors claim that there is no conflict of interest.

References

- Ali, S. M., & Said, S. M. (2019). Histological and scanning electron microscopic study of the effect of UV-A radiation on the land snail *Monacha obstructa*. *The Journal of Basic and Applied Zoology*, 80, 8. [\[Crossref\]](#) [\[Google Scholar\]](#)
- Amal, H. E., & Abdel-Rahman (2020). Histopathological alterations in the foot and digestive gland of the land snail, *Monacha* sp. (Gastropoda: Helicidae) treated with some plant oils and neomyl. *Egyptian Journal of Plant Protection Research Institute*, 3(4), 1255–1270. [\[Google Scholar\]](#)
- Becker, J. E., Mirochnitchenko, N. A., Ingram, H., Everett, A., & McCluney, K. E. (2021). Water-seeking behavior among terrestrial arthropods and mollusks in a cool mesic region: Spatial and temporal patterns. *PLoS One*, 16(11), e0260070. [\[Crossref\]](#) [\[Google Scholar\]](#)
- Cilia, G., & Fratini, F. (2018). Antimicrobial properties of terrestrial snail and slug mucus. *Journal of Complementary and Integrative Medicine*, 15(3), 20170168. [\[Crossref\]](#) [\[Google Scholar\]](#)
- DSTU 7353: 2013 Miaso. Metodyka histolohichnoho vyznachennia svizhosti ta stupenia dozrivannia. *Chynnyi vid 2014-01-01* [DSTU 7353:2013. Meat. Method of histological determination of freshness and degree of ripening. Valid from 2014-01-01]. (2014). Kyiv (in Ukrainian).
- Habib, U. N. T., Abdel-Haleem, A. A., Omaima, M. M., & Eman, H. I. (2018). Histological and ultrastructural alterations in the digestive gland of the Egyptian slug, *Limax maximus* (Linnaeus, 1758) treated with botanic molluscicidal thymol, with reference to biological studies. *Egyptian Journal of Aquatic Biology & Fisheries*, 22(5), 137–148. [\[Crossref\]](#) [\[Google Scholar\]](#)
- Hamed, S. S., Abdelmeguid, N. E., Essawy, A. E., Radwan, M. A., & Hegazy, A. E. (2007). Histological and Ultrastructural Changes Induced by Two Carbamate Molluscicides on the Digestive Gland of *Eobania vermiculata*. *Journal of Biological Sciences*, 7, 1017–1037. [\[Crossref\]](#) [\[Google Scholar\]](#)
- Hamlet, S. A., Bensoltane, S.B., Djekoun, M., Yassi, F., & Berrebbah, H. (2012). Histological changes and biochemical parameters in the hepatopancreas of terrestrial gastropod *Helix aspersa* as biomarkers of neonicotinoid insecticide exposure. *African journal of biotechnology*, 11(96), 16277–16283. [\[Crossref\]](#) [\[Google Scholar\]](#)
- Köse, M., Eser, M., Kartal, K., & Bozkurt, M. F. (2015). Infections of Larval Stages of *Dicrocoelium dendriticum* and *Brachylaima* sp. in Brown Garden Snail, *Helix aspersa*, in Turkey. *The Korean Journal of Parasitology*, 53(5), 647–651. [\[Crossref\]](#) [\[Google Scholar\]](#)
- Lobo-da-Cunha, A. (2019). Structure and function of the digestive system in molluscs. *Cell and Tissue Research*, 377(3), 475–503. [\[Crossref\]](#) [\[Google Scholar\]](#)

- Mohammadein, A., EL-Shenawy, N. S., & AL-Fahmie, Z. H. (2013). Bioaccumulation and histopathological changes of the digestive gland of the land snail *Eobania vermiculata* (Mollusca: Gastropoda), as biomarkers of terrestrial heavy metal pollution in Taif city. *Italian Journal of Zoology*, 80(3), 345–357. [\[Crossref\]](#) [\[Google Scholar\]](#)
- Noothuan, N., Apitanyasai, K., Panha, S., & Tassanakajon, A. (2021). Snail mucus from the mantle and foot of two land snails, *Lissachatina fulica* and *Hemiplecta distincta*, exhibits different protein profile and biological activity. *BMC Research Notes*, 14, 138. [\[Crossref\]](#) [\[Google Scholar\]](#)
- Parvate, Y. A., & Thayi, L. (2017). Toxic effect of clove oil on the survival and histology of various tissues of pestiferous land snail *Achatina fulica*. *Journal of Experimental Biology and Agricultural Sciences*, 5(4), 492–505. [\[Crossref\]](#) [\[Google Scholar\]](#)
- Peña, S. C., Pocsidio, G. N., & Co, E. L. (2017). Histological Responses of Golden Apple Snail (*Pomacea canaliculata*) to Copper. *Philippine Journal of Science*, 146(3), 315–321. [\[Article\]](#) [\[Google Scholar\]](#)
- Pirger, Z. S., Elekes, K., & Kiss, T. (2004). Functional morphology of the salivary gland of the snail, *Helix pomatia*: a histochemical and immunocytochemical study. *Acta Biologica Hungarica*, 55(1–4), 221–232. [\[Crossref\]](#) [\[Google Scholar\]](#)