

Crime Laboratory Division Newsletter

www.dps.texas.gov/section/crime-laboratory-service/overview

Inside this issue:

Technical Programs	2-5
Abilene Lab	6
Amarillo Lab	7
Austin Lab	8-9
Breath Alcohol Lab	10
Capitol Area Lab	11
CODIS Lab	12
Corpus Christi Lab	13
El Paso Lab	14
Garland Lab	15
Houston Lab	16
Laredo Lab	17
Lubbock Lab	18
Midland Lab	19
Tyler Lab	20
Waco Lab	21
Weslaco Lab	22

Message from the Chief's Office

Greetings from the DPS Crime Laboratory Division!

Welcome to our first statewide Crime Laboratory Division newsletter. The purpose of our newsletter is to increase the lines of communication between the laboratory and our customers. Thanks to the support of the Legislature, we were able to add over 100 new staff members over the last two years. These new staff members were much needed and will go a long way in helping us keep up with the ever-rising demands for forensic services. The focus over the

last two years has been Toxicology-blood alcohol and sexual assault cases. The additional resources, the use of video testimony, and the resilience of our staff to find a way to work through the COVID-19 pandemic have allowed the Division to make a great deal of headway in these two disciplines.

As we move forward we need to continue to leverage our 1 lab 16 locations concept by moving cases to DPS locations that have the capacity to work them and continued use of video testimony. Thank you for



your continued partnership on both of these efforts.

We welcome any feedback on how we can improve our services. If you have any questions, suggestions, comments, or concerns, please email us or complete our survey.

<https://www.surveymonkey.com/r/TS83H2B>

Thank you,
Brady Mills, Chief
Crime Laboratory Division

Crime Laboratory Division Notices

87th Legislative Update

HB 3774: Allows TFSC to use their funds to support training for labs.

HB 2706: Among other things, increases the time frame during which a sexual assault survivor can receive a reimbursable forensic exam from 96 hours to 120 hours.

SB 1125: Clearly delineated that drug materials for destruction can be released to a lab for R&D/method development.

HB 1706: Creates a court for sexual assault cases to better serve survivors.

HB 957: Firearms suppressors fully manufactured in Texas protected from federal rules.

SB 768: Makes 1-4 grams of fentanyl or fentanyl analogues a second-degree felony; 4-200 grams: possible life sentence.

HB 1024: Makes permanent pandemic-era permissions for delivery and pickup of alcoholic beverages.

Toxicology Kits

Due to the shortage of Toxicology Blood Evidence Collection Kits, the following vendors have kits that are comparable to DPS Kits:

- ◆ Lynn Peavey: Item #05786
- ◆ Tri-Tech Forensics: Item #BA-2
- ◆ Sirchie: Item #BSC100A
- ◆ Arrowhead Forensics: Item #A-BAS-10

TECHNICAL SERVICES

5800 Guadalupe St

Austin, TX 78752

Phone: (512) 424-2105

E-mail: LabQA@dps.texas.gov

Asst. Laboratory Director: Melissa Valadez

System Quality Manager: Heather Greco

Asst. System Quality Manager: Zoe Smith

Asst. System Quality Manager: Carly Bishop

Toxicology Program: Trevis Beckworth

Biology Program: Vanessa Nelson

Comparative Sciences Program: Sandy Parent

Seized Drugs Program: Chance Cline

Evidence Coordination: Chris Fontenet

Digital Multimedia Evidence: Erin Maslon

Laboratory Records Program: Justin Parker

Quality Assurance Program

The DPS crime laboratories have been continuously accredited since 1986 through the American Society of Crime Laboratory Directors/ Laboratory Accreditation Board (ASCLD/LAB), now ANSI National Accreditation Board (ANAB). The Crime Laboratory continues to maintain its accreditation in Forensic Testing to the requirements of ISO 17025:2017, ANAB accreditation requirements, FBI Quality Assurance Standards for Forensic DNA Testing Laboratories, and Quality Assurance Standards for DNA Databasing Laboratories.

Since 2013, the Breath Alcohol Laboratory has been accredited to the requirements of ISO 17025 for Forensic Calibration and Certified Reference Material through the American Society of Crime Laboratory Directors/ Laboratory Accreditation Board (ASCLD/LAB), now ANSI National Accreditation Board (ANAB). In 2019, the Certified Reference Material program transitioned to ISO 17034 for reference material production.

What is accreditation and why is it important?

Laboratory accreditation is a process by which an authoritative body evaluates the technical competency of the laboratory using internationally recognized processes and standards. This independent assessment includes all elements that contribute to the production of accurate, reliable test data including, but not limited to, the competence of staff; the validity and appropriateness of test methods; the traceability of measurements and calibrations; the suitability, calibration, and maintenance of equipment; and the testing environment.

The accrediting body considers conformance, competence, and effectiveness of the overall management system when granting accreditation. Accreditation provides laboratory customers with the underlying assurance that the laboratory is adhering to internationally recognized standards.

Seized Drugs Program Updates

New Instrumentation

The laboratory is in the process of installing and validating replacement and additional laboratory equipment at our 13 seized drug locations. This equipment includes additional gas chromatograph mass spectrometers, ultraviolet and visible spectrophotometers, and Fourier transform infrared spectrophotometers. We are also expanding our testing to include liquid chromatography mass spectrometry and Raman spectrophotometry. This additional instrumentation will enable us to expand our testing methodology and identify novel psychoactive substances as they evolve and change.

try and Raman spectrophotometry. This additional instrumentation will enable us to expand our testing methodology and identify novel psychoactive substances as they evolve and change.

E-cigarette and vape pen testing

The laboratory is developing a method for distinguishing hemp products from controlled substances in electronic smoking devices and oils suspected of containing tetrahydrocanna-

binols. This will allow the criminal justice system across the state to move forward with these types of cases. The method is expected to be completed, validated, and implemented before the end of the year.

Comparative Sciences Program Updates

The **Firearms and Toolmarks Section** is responsible for the comparison of firearms, cartridge cases, fired shotshells, projectiles, and other evidence that may be associated through toolmarks.

Toolmarks result whenever two items come into contact with one another with sufficient force such that one or both of the items bear markings resulting from the other item.

Other examinations performed by the Firearms and Toolmarks Section include functional testing of firearms,

determination of caliber or potentially determining a manufacturer of the firearm that fired a particular projectile/cartridge case from an unknown firearm, muzzle-to-garment distance determinations, and serial number restorations.

The most important method utilized for examining evidence in the Firearms and Toolmark section is comparison microscopy, in which an analyst uses a microscope to compare toolmarks on two different items to determine if they have a common source. Although DPS Crime Labs no

longer perform NIBIN entries, suspected associations submitted by a customer utilizing external NIBIN testing services may be confirmed by the laboratory.

We offer firearms testing in Austin, El Paso, Garland, Houston, Laredo, Lubbock, Tyler and Weslaco; toolmark testing of hand tools (wire cutters, bolt cutters, pry bars, etc.) and distance determination testing are offered in select locations only.

Please see the table below for FTM Examinations and Limitations.

Possible Types of Evidence	Possible Examinations	Limitations
Projectiles ("Bullets") Cartridge Cases	Caliber and/or weapon type Possible firearm manufacturer Determination if projectiles or cartridge cases were fired by a single firearm or multiple firearms	Cannot determine if a bullet came from a particular cartridge case
Firearm	General condition (mechanically functional) Trigger Pull (pressure required to fire) Restoration of obliterated serial numbers Determination of modifications Test firing to obtain test specimens for comparisons to fired evidence	Serial numbers may not be restorable depending on method of etching and/or obliteration Determination if evidence projectiles or cartridge cases were fired by the firearm may result in inconclusive opinions
Shot Pellets and Shot Wads (Fired Shotshells)	Size of shot pellets Gauge of wad	Cannot determine gauge on shot pellet
Clothing	Approximate distance firearm was from clothing when fired	Requires ammunition and the firearm with a positive association to fired evidence
Suspected Tool and Toolmark(s)	Determination if a submitted tool produced the mark/cut on evidence	The tool needs to be associated with the suspect, prior to any comparisons

Biology Program Updates

DPS has contracted with Signature Science Forensic DNA Laboratory to outsource Sexual Assault cases that were submitted to the Crime Lab prior to September 1, 2019. Signature Science, along with the University of North Texas Health Science Center, will be accepting cases from the DPS Crime Labs for

processing. If your case is identified for outsourcing, you will receive a Closed Without Analysis Report indicating this information. Analysis reports and evidence returns will be sent directly to submitting agencies from the outsourcing labs.

Comparative Sciences Program Updates

Please see the articles in the Austin Laboratory section of this newsletter for information regarding the **Forensic Document Examination** discipline and the **Trace Evidence** discipline.

Digital Multimedia Evidence Updates

The Digital/Multimedia Section is now accepting vehicle infotainment/telematics systems for analysis. At this time we are only accepting modules that have been removed from vehicles, not the vehicles themselves. After a consultation, we can provide instructions for the forensic removal of modules if requested. All vehicle module submissions should include the following information:

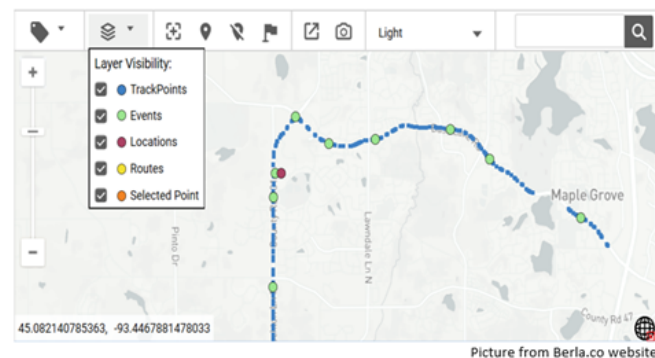
- * Make, model, and trim of vehicle, or
 - * Vehicle Identification Number (VIN)
 - * Valid search authorization (signed consent or search warrant)
- The laboratory can provide extraction and analysis of data from the modules. Recoverable data may include:
- * Information about connected devices (Bluetooth, WiFi, unique identifiers)

- * Information from connected devices (contacts, call logs, SMS messages, media files)
- * Events logged by the vehicle (gear shifts, hard braking, hard acceleration, traction events, seat belts, etc)
- * Navigation information (tracklogs that show the GPS coordinates of where the vehicle actually traveled, locations entered by the user, and routes).

Content Type	Description
Connections	Bluetooth, Wi-Fi – unique identifiers
Devices	Phones <ul style="list-style-type: none"> • Unique Identifiers • Contacts • Call Logs • SMS • Media Files Mass Storage Devices Embedded Device CD/DVD
Events	Bluetooth Connections, Doors, Devices, Gear Shifts, Light Status, Media, Odometer Reading, Phone Calls, Stop/Start Log, System, Time Updates, USB Connections, Wi-Fi Connections, Message Display, GPS Warnings, Voice Recording, Traffic Update, Hard Braking, Hard Acceleration, Traction Events, Driver Distraction, Apple Carplay enabled, Android Auto enabled, Voice Command, Speech Recognition, Web Browser History, Seat Belts, Ignition Key, Navigation, Power, Emergency Assistance

Content Type	Description
Navigation	<u>Tracklogs*</u> , Location, Routes
System Metadata	Information about the vehicle

*Tracklogs are a collection of trackpoints that show the GPS coordinates of where the vehicle actually traveled. Even if the driver did not enter a location into the navigation unit, these trackpoints can be recorded and recovered.



Benefits of Vehicle Forensics can include:

- * placing a person, vehicle, or mobile device at a specific location at a certain date/time
- * accessing information from a phone that was connected to the vehicle when the phone itself is inaccessible (encrypted or locked)

- * identify events logged by the system relating to car accidents

Please note that not all vehicles have infotainment/telematics modules. Additionally, not all modules are supported or fully supported by our forensic software. It is also possible that not all events occurring in a vehicle are recorded. There is inherent risk involved when removing modules

from vehicles. It is possible that damage may occur to the vehicle or module. When a module is removed from a vehicle, the vehicle will not be operable until the module is reinstalled.

Please contact Digital/Multimedia Section Supervisor Jennifer Land at 512-424-7558 or Jennifer.land@dps.texas.gov for any questions you may have.

Evidence Program Updates

What is a Proper Seal?

A proper seal is one which prevents loss, cross-transfer, or contamination while ensuring that attempted entry into the container is detectable.

For a seal to be considered proper, the date and handwritten initials or other identification of the person who created the seal must be visible on, or across, the seal.

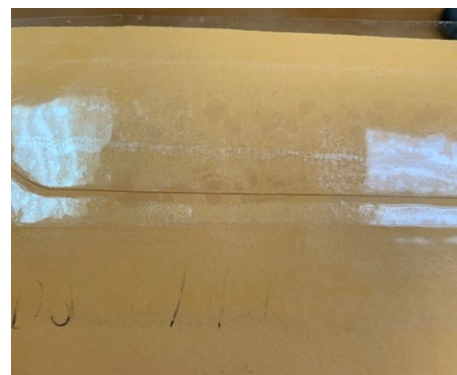
NOTE: A permanent marker should be used to initial and date the seals. Ball point pens should NOT be used as they are not perma-

nent and can be removed with handling and/or environmental conditions (see examples on the right).

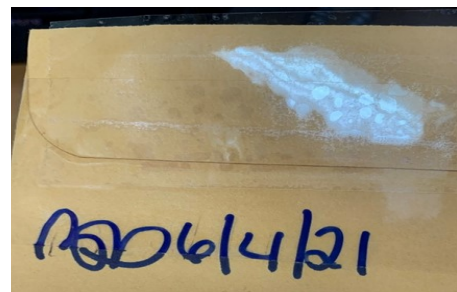
All container edges, corners, manufactured seals, and other openings should be reinforced with tape in order to prevent loss of contents.

Application of a proper seal further supports the integrity of the container, but is not required.

Staples may not be used as they do not constitute a proper seal and may present a safety hazard.



NOT a Proper Seal: Ball Point Pen was used for initials and date and they are no longer present.



Proper Seal

Seized Drug Evidence Submission FAQs and Tips

Does the case have multiple suspects AND multiple exhibits? If 'yes', indicate which suspect(s) is associated with each exhibit in the 'Source' field.

Does an exhibit in this case have multiple bags, bottles, tablets, etc.? If 'yes', indicate the number of bags, bottles, tablets, etc. in the 'quantity' field. *DO NOT put a weight in the 'Brief Description of Evidence' or 'Quantity' fields.*

Has the evidence been sealed in additional layers of packaging? If 'yes', do not describe additional layers in the 'Brief Description of Evidence' field.

Is there only one suspect but multiple exhibits AND multiple suspected substances associated with this case? If 'yes', review the 'Case Acceptance and Analysis Policies' in the Laboratory Customer Handbook prior to submitting the evidence. *Submitting more evidence than allowed by policy

will increase the time required for analysis and to issue the report.*

Has any other evidence associated with this offense been submitted to the laboratory? If 'yes', please advise Evidence Coordination staff.

Are different pharmaceutical preparations being submitted? If 'yes', please advise Evidence Coordination staff.

Are multiple exhibits being submitted for analysis? If 'yes', mark the evidence with exhibit numbers so that we can easily determine which evidence is associated with each exhibit.

Does your case include a liquid exhibit? If 'yes', review the 'General Evidence Collection Guidelines and Packaging Requirements' in the Laboratory Customer Handbook prior to submitting the evidence. *Leak-proof containers are essential.*

Is the substance in a bag that is open

at the top? If 'yes', please seal the top of the bag OR seal the bag inside of another bag before sealing it in an envelope or box.

Have non-liquid substances been contained in a plastic or paper bag before being sealed in an envelope or box? If 'no', please consider sealing the evidence in a plastic bag or small envelope before sealing it in an envelope or box. *Exceptions include plant substance and mushrooms that may need to be packaged in paper containers to prevent the formation of mold.*

*Placing powder or crystalline substance loose into an envelope or box can result in the substance leaking out of a corner that is not completely taped. The substance can also become adhered to the tape, and that complicates weighing and analysis.

*Small tablets can also work their way out of untaped corners of envelopes.



Abilene Laboratory News

Evidence submission tips:

Please double check the information on the submission forms to ensure that it does not contain old or previously submitted information.

For non-DPS agencies, please make sure to contact the laboratory prior to submitting any hemp cases. This is due to our limited storage space.

Please do not submit Disposition of Seized Drugs (Controlled Substance) Evidence Forms for any pending cases. Destruction forms are only required for cases author-

ized for destruction.

When corresponding via email with the laboratory, please use the Abilene Crime Lab email address: AbileneCrimeLab@dps.texas.gov

This email is continuously monitored during working hours.

Reminder, the Abilene Crime Lab no longer performs blood alcohol analysis. If you are unsure where to send your blood alcohol kit, please contact the laboratory and our staff will be happy to assist you in locating the correct laboratory.

ABILENE LABORATORY

2720 Industrial Blvd

Abilene, TX 79605

Phone: (325) 795-4040

E-mail: AbileneCrimeLab@dps.texas.gov

Laboratory Manager: Mary Avalos Belli

Quality Manager: Kevin Condel

Community Outreach

In the past, the Abilene Crime Laboratory has provided classes that offer the seized drug discipline overview, as well as evidence handling and submission assistance.

We would be happy to come out and provide an evidence handling class at your location.

Please give us a call to set up a class near you.

We are excited with all of our new staff and to have such a great team! We are ready to assist in any way that we can. Let us know how we can help you.

Section Spotlight

The Abilene Crime Laboratory now has an Administrative Assistant, **Pat Goodnature**.

You may have already met her in person or on the phone. She has been of great assistance in welcoming visitors and customers, answering phone calls, responding to emails, as well as many other projects.

Additionally, we now have a Seized Drug Technician, **Marian Cabasal**.

She assists in the Seized Drug section

by maintaining and performing monthly checks on instruments, performance checks on color tests, and ordering laboratory supplies.

She assists with various laboratory projects, and occasionally receives evidence as well.

The Abilene Crime Laboratory now has 5 fully trained Forensic Scientists and one Forensic Scientist in training (with only a few more months left in training).



Amarillo Laboratory News

Laboratory Staff

The Amarillo Crime Laboratory currently has a regional laboratory manager, three evidence technicians, four forensic scientists, one forensic scientist in training, and one breath alcohol technical supervisor.

Turn-Around-Time

As of June 9, 2021, the turn-around time for cases in the Amarillo Crime Laboratory is approximately 22 days for non-THC cases and local cases.

With the new method validated to test plant substances, we have been able to reduce our excess quantity plant cases.

Building Update

The Amarillo lab is expecting a remodel in the near future. There is currently not a set date; however, we are looking for ways to continue receiving and processing cases and providing our law enforcement partners with forensic services during the remodel.

Evidence submission and other tips/updates

Please double check submission forms to ensure that the listed information (i.e. agency case number, suspect information, agency item number, description, quantity) is accurate to prevent any delay in analysis.

For quantity, put the number of items you are submitting for testing, not weights.

Ensure that evidence is properly sealed and that seals are intact prior to submitting to the laboratory to prevent loss of evidence. Reminder: A proper seal constitutes initials and date across the seal.

Use the Amarillo Crime Laboratory email address:
Amarillo.CrimeLab@dps.texas.gov

when corresponding with the laboratory or when emailing subpoenas.

For DPS agencies only: Evidence for destruction only will be submitted in Sirchie evidence bags as soon as DPS has a sufficient amount of them in stock.

Community Outreach

Laboratory Hours

Monday-Friday

8:00 AM – 5:00 PM

Closed for lunch from 12:00 – 1:00 PM

Evidence coordination stops receiving at 4:00 PM

The Amarillo Crime Laboratory has provided presentations on evidence submission in the past.

Please contact us if you are interested in a presentation.

If there is any way we can assist you, please let us know!

AMARILLO LABORATORY

4200 Canyon Drive

Amarillo, TX 79109

Phone: (806) 468-1431

E-mail: AmarilloCrimeLab@dps.texas.gov

Laboratory Manager: Brandon Conrad

Quality Manager: Kevin Condel



Austin Laboratory — Employee News

New Hires

Melissa Pemberton – DNA
 Jessica Mory - DNA
 Liz Hosage – DNA
 Kelsey King – DNA
 Kiersten Drake – SD
 Isabel Brownlow – FR
 Ginna Miller – FR
 Austin Gludt – ECS
 Chelsey Smith – AFIS

Anniversaries

Hank Amen – SD – 30 years
 Rusty White – TE – 25 years
 Karen Ream – TOX – 20 years
 Allison Heard – DNA – 15 years
 Robert Meade – DNA – 15 years
 Mallory Foster – FTM – 10 years
 Meghan Blackburn – FR – 15 years

Promotions

Keelie Johnson – FDE – FSI
 Veronika Fischer – DNA – FSI
 Melissa Kimbrell – DM – FSI

AUSTIN LABORATORY

5800 Guadalupe St, Bldg U

Austin, TX 78752

Phone: (512) 424-2105

E-mail: AustinCrimeLab@dps.texas.gov

Laboratory Manager: Haley Yaklin

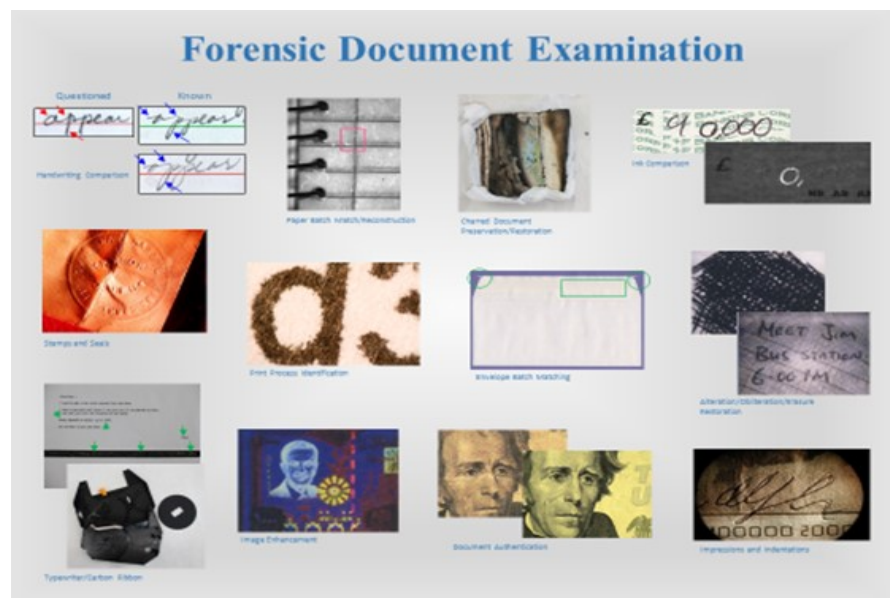
Quality Manager: Michelle Melo

QA Specialist: Stephanie Meek

Section Spotlight

Forensic Document Examination is tasked with examining evidence in order to determine the origin, authenticity or authorship of documents in a variety of crimes including, but not limited to: forgery, fraud, homicide/suicide, threatening correspondence, tampering with government documents and counterfeiting.

Our discipline conducts several types of analyses in these types of cases including: handwriting identification and comparison, paper batch match and reconstruction (reassembling torn or machine shredded documents), envelope batch matching, examination/preservation of charred and saturated documents, latent writing impression restoration, image enhancement, identification of conventional and digital print processes, document authentication (including passports, identification cards and driver licenses), spectral ink comparison (non-destructive), examination of carbon ribbon evidence (typewriters), and other miscellaneous document examinations.



Known documents should accompany the questioned material where applicable. If no known handwriting can be located, exemplars can be prepared *before* submission. Please contact the laboratory for this service.

FDE also houses a reference collection where any robbery notes or demand letters can be compared to existing documents for an investigative lead.

Please always try to preserve evidence and avoid processing for latent prints and DNA until after FDE analysis is complete. We will preserve the evidence for further testing.

If you have any questions, or need any additional information, please contact the FDE discipline at DPSForensicDocs@dps.texas.gov or at 512-424-2105.

Section Spotlight

We would like to take this opportunity to introduce the **Trace Evidence Section** of the Austin laboratory. The Trace Evidence Section is composed of 12 analysts who collectively perform analysis in four main areas that include **Materials, Impressions, Gunshot Primer Residue (GSR), and Ignitable Liquid Residue**. The strength of trace evidence is to associate people, places, or objects which cannot otherwise be associated. While our section does not provide statistical results, the value of trace analysis resides in its ability to serve as an associative evidence, develop leads, and corroborate case testimonies and/or circumstances.

The subcategory of **Materials** consists of hair, fiber, glass, physical match, paint/polymer, filaments, tape, and unknowns analysis (please note that filaments, tape, and unknowns analyses requests are fulfilled in other regional laboratories). The majority of these analyses are most beneficial if a known sample is provided for comparison. In hair analysis, a known sample is composed of hair collected from the victim and/or suspect that consist of at least 25 pulled and/or combed hairs. Depending on the case, both head and pubic hair samples may be needed. Known samples for fiber, glass, and paint analysis consist of the suspected source of the questioned material being submitted. In addition, we can provide investigative leads for cases involving automotive paint samples utilizing a paint database. Depending on the quality of the questioned sample, this database can provide makes, models, and year ranges for potential vehicles that may have



deposited the questioned paint sample.

The sub-category of **Impressions** focuses on the analysis of footwear, tire, and fabric impressions. The analysis typically consists of the comparison of a questioned impression left at a scene to a known shoe, tire, or fabric. Questioned impressions may be submitted as photographs, lifts, or casts. It is important to note that the quality of the photograph taken of an impression can greatly impact the analysis performed on it. A few factors to remember when taking impression photographs on scene include filling the frame or field of view with the impression, placing a ruler or scale in the photograph, ensuring the lens of the camera is parallel to the surface of the impression, and utilizing a raw format when capturing the photographs.

The sub-category of **Gunshot Primer Residue (GSR)** analysis utilizes a scanning electron microscope paired with an energy dispersive X-ray spectrometer to analyze samples from people and inanimate objects for GSR. The strength of this analysis is to associate people, places, or objects with the discharge of a firearm which cannot otherwise be associated. In order to efficiently assess and assign this case-work, the GSR information form (provided in most GSR kits) is needed. This form provides our laboratory with information such as when the incident

occurred, when the kit was collected, injury sustained by the individual, as well as event specific information. Two stub kits from individual's hands are preferred for efficiency and workflow purposes. GSR kits collected from an individual's hands greater than four hours after the incident and kits collected from individuals who have sustained a gunshot wound (based on case scenario) will not be analyzed by our laboratory.

The sub-category of **Ignitable Liquid Residue** analysis (formally referred to as Fire Debris) involves the examination of materials from the scene of a fire to determine the presence or absence of an ignitable liquid. While most materials to be tested for ignitable liquids consist of debris from a fire, other items that can be tested include clothing from a victim or suspect, suspected liquids, soil or vegetation, or empty containers that may have been used to carry an ignitable liquid to a scene. The packaging of this evidence can greatly impact the analysis. The samples should be packaged in epoxy-lined metal cans to limit the loss of potential evidence.

Have questions on if or how trace evidence should be collected? Feel free to give us a call or send an email, and we are more than happy to help. The Trace Section Supervisor is Lyndsi De La Rosa. Her contact information is 512-424-2105 x3193 and Lyndsi.delarosa@dps.texas.gov. Additionally, information regarding evidence collection/packaging, what analyses we perform, how to collect/submit known standards, and much more can be found in the Customer Handbook on the Texas DPS website.

Breath Alcohol Laboratory News

Intoxilyzer 9000 Operator Schools

The Office of the Scientific Director (OSD) provides training for law enforcement personnel seeking certification as an Intoxilyzer 9000 operator. Full information may be obtained by visiting the OSD webpage: www.dps.texas.gov/BalLab. The FAQs tab will contain a schedule of schools which are conducted throughout Texas.

Testing Activity

BAL testing activity for the first quarter of 2021 remains below pre-pandemic levels with 7045 complete subject tests statewide.

Court Activity

As the state begins to recover from the pandemic, court activity has begun to return to normal levels. BAL Forensic Scientists testified in eight criminal trials, swore to 1226 affidavits and prepared 150 discovery packets for criminal litigation.



BREATH ALCOHOL LABORATORY

5800 Guadalupe St., Bldg U

Austin, TX 78752

Phone: (512) 424-2405

E-mail: OSD@dps.texas.gov

Scientific Director: Trevis Beckworth

Quality Manager: Jennifer Howard

Employee Spotlight

BAL Summer Intern

Rica Diaz has joined the BAL as a summer intern. She is a senior at St. Mary's University, majoring in Forensic Science Criminology with a minor in Biology. The intern project will focus on reorganizing and updating the BAL Science Library. In addition to updating the indexing system and current documents in the library, the intern will select articles from the Washington State Patrol's Forensic Science Library Bureau (FSLB) from 2019 to present for toxicology-related

articles. These studies will be reviewed by the intern for relevant content and submitted to the intern supervisor for inclusion in the BAL Science Library.

Personnel

Forensic Scientist **Melynda Carter** completed forensic alcohol training, received work authorization in the BAL and received certification as a Technical Supervisor. She is now providing BAL supervision in Region 5 Amarillo Laboratory.

Capitol Area Laboratory News

The Capitol Area Laboratory (CAP) was formed through an MOU with the City of Austin in 2017. The lab is located within the Austin PD Robert Martinez, Sr. Central East Substation and Forensic Center. The CAP lab performs DNA analysis on Austin PD and Travis County evidence and performs technical review of outsource data for entry into CODIS.

There are currently 11 positions at the CAP Lab made up of DPS FTEs and City of Austin personnel. Over the last

three years, the team has worked hard to complete the review of approximately 4,444 outsource cases from three different private laboratories while also performing analysis on in-house cases. The data review project was completed in April 2021.

Over the last year, new instrumentation was received by the lab and validated and the analysts will soon begin training on the new instruments in order to utilize in a new workflow.

CAPITOL AREA LABORATORY

812 Springdale Road

Austin, TX 78702

Phone: (512) 424-7873

E-mail: CapitolCrimeLab@dps.texas.gov

Acting Laboratory Manager: Melissa Valadez

Quality Manager: Michelle Melo

Employee Spotlight



Samantha Perkins

Samantha Perkins is the DNA Supervisor and Technical Leader of the Capitol Area Lab. She began her career with the department almost 10 years ago and has spent time in the Austin, Corpus Christi, and the Waco Labs before promoting to the CAP Lab DNA Supervisor.

The best part about working in so many labs was getting to work with so many great people across the state. She is married to a state trooper whom she met at Texas A&M (Whoop!) while they were in the Corps of Cadets together, and they have a 2 year old, Alan, 1 schnauzer, and 2 German Shepherds. She enjoys traveling, comedy, spending time with family and friends, coffee, birthday breakfasts/lunches with her team, practical jokes, food, and running.

Employee News

New Hires:

Amanda Gonzalez began with the CAP lab in April 2020. She has 8 years' experience as a Forensic Scientist and we are excited to have her join our team!

Promotions:

Keara Trevino-Davis promoted to Forensic Scientist III in June 2021! Congratulations, Keara!

DPS Anniversary:

Misty Hernandez celebrated 10 years with the department in January 2021! Congratulations, Misty!

CODIS Laboratory News

Sample Submissions, 2021 Q1

Blood samples received: 3,372

Buccal samples received: 8,928

Total received: 12,300 samples

Month	CODIS Hits	Samples Processed
January	375	2999
February	153	2469
March	288	3219

Turnaround time for processing these samples and uploading DNA profiles to CODIS was 30 days.

2021 Internal Audit completed successfully.

What is Familial Searching?

Familial searching is a service of using the CODIS database to try to identify a close biological relative of an unknown DNA profile from a crime scene. The target relationship conducted in the search is either a parent/child or full sibling. These searches are only conducted as a last resort after all other investigative leads have been exhausted and if the crime is a homicide, sexual assault, or crime that has significant public safety concerns.

Employee News

New Hires

Shekinah C. *CODIS Interagency Liaison*

Madeleine F. *CODIS Technician*

Eve S. *CODIS Technician*

Employee Highlight

Ryan S. *Lean Six Sigma Green Belt Certification*

Promotions

Christopher P. *CODIS Program Coordinator*

Delilah P. *Forensic Scientist IV*

Ryan S. *LIMS Specialist*

Mario M. *CODIS Interagency Liaison*

CODIS LABORATORY

5800 Guadalupe St, Bldg Q

Austin, TX 78752

Phone: (512) 424-2790

E-mail: codislab@dps.texas.gov

Program Manager: Gary Molina

CODIS Interagency Liaison: Mario Mora

CODIS Interagency Liaison: Shekinah Cooper

SAE Program Specialist: Rebecca Vieh

Community Outreach

The CODIS Liaisons and an AFIS technician traveled to Brady, Texas on May 11th to be a part of a training presentation at the Montgomery County Sheriff's Office.

Five law enforcement agencies from the surrounding area were in attendance along with the Montgomery County Judge. The main topic was to inform/provide information regarding House Bill 1399 (from the 86th Legislative Session), training on how to properly collect DNA from qualifying

individuals and minimizing sample rejections.

Most common rejections for sample submissions:

- Bad quality fingerprints on the data card
- Blank swab envelope or blood tube
- Missing fingerprints
- Sample not collected with a CODIS collection kit

CODIS Program Website

<https://www.dps.texas.gov/section/crime-laboratory-service/statewide-codis-dna-database-program-overview>

We have a new DNA collection video!

<https://www.youtube.com/watch?v=bEnSNfWMvNO>

Corpus Christi Laboratory News

Seized Drug Section Update

Seized drugs is turning around cases within 60 days.

DNA Section Update

All requests for expedited analysis for DNA cases need to be submitted via a LAB-213 for consideration. Sexual Assault kits submitted with offense dates past 9/1/19 do not need a LAB-213.

CORPUS CHRISTI LABORATORY

1922 South Padre Island Drive

Corpus Christi, TX 78416

Phone: (361) 698-5641

E-mail: CorpusChristiCrimeLab@dps.texas.gov

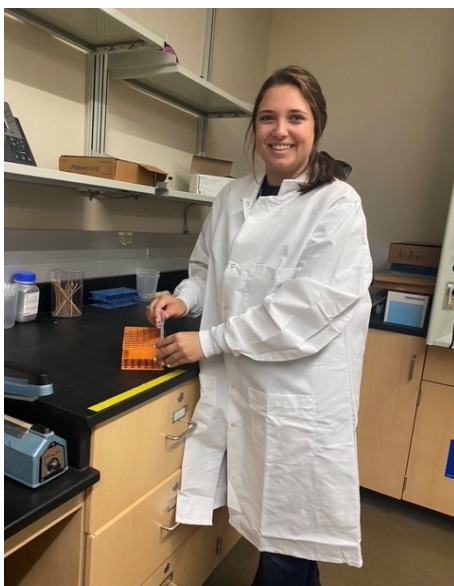
Laboratory Manager: Brian Nacu

Quality Manager: Catalina Cuervo

Employee Spotlight

Chas Bomgardner

Chas is a new hire who came all the way from Pennsylvania to pursue her life-long dream of being a Forensic Scientist. She graduated with a B.S. in Chemistry in hopes of someday working with controlled substances in a forensic lab. She is excited to have started her career by serving in one of the Seized Drugs sections as an analyst. Chas is very excited to be starting her career with Texas DPS and embracing Texas as her new home!



Employee Spotlight

Madalyn Beach

Madalyn is a new hire who moved from Dallas, Texas. She graduated with a B.S. in Chemistry from the University of North Texas and a B.S. in Bioenvironmental Sciences from Texas A&M University.

She is excited to move back to her hometown of Corpus Christi, TX to pursue her dream of being a Forensic Scientist.

El Paso Laboratory News

Hello El Paso Region customers!

Your El Paso team has been busy during the Pandemic. We added 5 new Forensic Scientists to our staff, 2 in Seized Drugs, 1 in Blood Alcohol, 1 in DNA and 1 in Firearms. We also have a Crime Laboratory technician in the DNA section. Our Quality Assurance Specialist promoted and is now our Quality Manager! We are open for business and look forward to working with you soon!

Section Spotlight

The **DNA Section** has 8 staff members including the Section Supervisor, and they've all been working diligently to complete the analysis of sexual assault kits in 90 days as mandated by legislature. Due to increased staffing the past year and a half, the section is able to keep up with cases of other offenses too. Meet the DNA team:

Nick Ronquillo, DNA Section Supervisor/Technical Leader, (915)849-4128

Christine Cenicerros, Forensic Scientist VI, 23 years

Evidence Submission:

◆ For customers submitting blood specimens for blood alcohol analysis, paperwork should not be placed inside the blood kit. Please reference Appendix 9 of the Laboratory Customer Handbook for additional information. If your agency protocols dictate that forms be submitted, (Specimen Routing Forms, Blood Collection Reports, Instructions For Collection, Submission of



Blood Specimens Forms), it would be preferable for the additional forms be provided at the same time as the laboratory submission form.

◆ In order to facilitate faster service, please ensure that the information documented on the Laboratory Submission Form is as accurate and error-free as possible. Thank you.

Cathey Serrano, Forensic Scientist IV, 13 years

Imer Cardona, Forensic Scientist III, 12 years

Agatha Eason, Forensic Scientist III, 4 years

Jessica Gonzales-Pena, Forensic Scientist II, 3 years

Victoria Head, Crime Lab Technician, 1 year

Stephanie Carreon, Forensic Scientist II, 1 year anniversary was June 1st!

EL PASO LABORATORY

11612 Scott Simpson Drive

El Paso, TX 79936

Phone: (915) 849-4113

E-mail: ElPasoCrimeLab@dps.texas.gov

Laboratory Manager: Joseph Correa

Quality Manager: Angel Rios

Community Outreach

Counties we service:

Brewster, Crane, Crockett, Culberson, Hudspeth, Jeff Davis, Loving, Pecos, Presidio, Reagan, Reeves, Sutton Terrell, Upton Ward, Winkler



El Paso Firearms section attending S.O.G. Expo at Ft Bliss, TX

Firearms Section Forensic Scientists Attended SOG Expo at Ft. Bliss

On May 5th and 6th the U.S. Border Patrol Special Operations Group (SOG) hosted their 19th Annual Law Enforcement Equipment & Technology Expo at Biggs Army Airfield in El Paso, TX. This was a great opportunity for DPS firearms examiners to talk with industry insiders/representatives about new technology on the market. Day 2 of the Expo took place on the range, allowing attendees to test fire various newly introduced, suppressed, scoped, fully-automatic, and

high-powered firearms.

On June 8th GLOCK Professional held an Armorer's course hosted by the El Paso Community College Law Enforcement Training Academy. The 8-hour course taught how to fully disassemble and diagnose function issues in any generation of GLOCK pistols. Attendees were provided with their own pistol to field strip and disassemble. Classes such as these are great opportunities for firearms examiners to learn the intricacies of the firearms they see on a daily basis directly from the manufacturer.

Garland Laboratory News



Garland Crime Laboratory Building

Greetings from Garland!

The lab personnel demonstrated tremendous resiliency during the pandemic.

The **Toxicology (Alcohol/Volatiles) Section** made significant progress in the turn-around time to complete a case.

The average turn-around time is less than 30 days which is down from an average of 155 days in 2020.

Evidence Submissions

New submission forms are available here: <https://www.dps.texas.gov/section/crime-laboratory-service/publications>.

The “Quantity” on the submission form is for the number of items (baggies, tablets, etc). Please do not use this field to enter the weight of the exhibit.

A kiosk computer is available in the lobby for our customers to type and print out submission forms.

Employee News

GARLAND LABORATORY

402 West IH 30

Garland, TX 75043

Phone: (214) 861-2190

E-mail: GarlandCrimeLab@dps.texas.gov

Laboratory Manager: James Nichols

Quality Manager: Uyen Henson

New Hires:

Shara Hegr—Records Analyst

Michelle Palma—Seized Drug Crime Lab Specialist

Kimberly Foster—Toxicology (Alcohol/Volatiles) Analyst

Arlette Lopez—DNA Analyst

Destinee Morton—DNA Analyst

Faith Forinash—DNA Analyst

Mallori Joseph—DNA Analyst

Jackie Winston—DNA Analyst

Morgan Hosbrough—DNA Analyst

DPS Anniversaries:

Andrew Macey—Toxicology (Alcohol/Volatiles)—23 years

Baron Andrus—DNA—5 years

Erica Reynaga—DNA—3 years

Alexis Javornik—DNA—3 years

Araceli Monroy—Evidence—2 years

Talia DiCesare—Toxicology (Alcohol/Volatiles)—2 years

Caitlyn Vivion—DNA—2 years

Promotion:

Uyen Henson—Quality Manager

Community Outreach

Open House

The DPS Garland Regional Crime Laboratory will host an Open House on **Tuesday September 21st, 2021** from **9:00am-4:00pm**.

Our customers and members of the public are invited to tour the laboratory and meet the forensic scientists.

RSVP by September 17th via email: garlandcrimelab@dps.texas.gov.

Carrollton Police Department

In June, the Garland Laboratory Manager and Garland Seized Drug Technical Point of Contact held a training for the Carrollton Police Department to cover evidence handling and submissions, the Seized Drug and Toxicology (Alcohol/Volatiles) disciplines, and case workflows.

If your agency is interested in DPS provided training, please contact the Garland Laboratory Manager.

Records Requests

Garland has a dedicated email address for records. Records requested under the Michael Morton Act, litigation packet, and subpoenae duces tecum should be submitted in person, faxed, or emailed to:

GarlandCrimeLabRecords@dps.texas.gov

Responsive records will be provided between 30-60 days . If requesting records for an upcoming trial, please provide the trial date.



The Houston Crime Lab received the 1st Annual DPS Crime Laboratory Division 2020 Safety Award

Houston Laboratory News

Turn-Around-Times

Turn-around-time is defined as the average age of an unreleased case.

Biology (screening): 63 days

Blood Alcohol: 18 days

DNA: 29 days

Firearms: 93 days

Seized Drugs: 124 days

Trace: 82 days

Notices

The evidence receiving section of the lab is closed for lunch from 11:30 to 12:30, phone calls and emails response times will be slower during this time.

The DPS Houston lab is expecting to be partially closed the first full week of July for AC repairs. We will not be taking any evidence appointments that week.

Employee News

New Employees This Quarter

Briana Rinks is a Sam Houston State University graduate, and she also brings previous knowledge of drug extractions from previous work experience. She looks forward to and is very excited to add to the Seized Drugs Section of the DPS Houston Crime Laboratory.

Erin Bruner has recently joined the Seized Drug section of the DPS Houston Crime Lab as a Forensic Scientist. She received her bachelor's in Biochemistry from Berry College and her

master's in Forensic Science from Sam Houston State University.

Amanda Hurtado is an Evidence Technician for the DPS Crime Lab in Houston. She was born and raised in El Paso, Texas and received her bachelor's degree in Forensic Science at St. Edward's University in Austin. Before moving to Houston, she worked at the El Paso Police Department as a Senior Office Assistant.

Two more new employees are starting soon, and we look forward to being fully staffed with 69 employees.

HOUSTON LABORATORY

12230 West Road, Building C

Houston, TX 77065

Phone: (281) 517-1380

E-mail: HoustonCrimeLab@dps.texas.gov

Laboratory Manager: Andrew Gardiner

Quality Manager: Somiyeh Zalekian

Community Outreach

In April, the Trace Evidence section did an outreach for our agencies in Jefferson County. They presented a one day seminar covering the recognition, collection, and preservation of trace evidence with an emphasis on

hit and runs.

The DPS Houston Lab held a virtual customer Outreach on May 24th. It was well attended by several of our customers in the area and a recording is available for anyone that missed it

and would like to watch.

Watch for future email announcements about more virtual trainings and (hopefully) an in-person Open House this fall.

Laredo Laboratory News

The Laredo Crime Laboratory has returned to normal operations and are open to receive evidence between the hours of 8:00 am to 4:30pm. The laboratory closes down for lunch from 12:00 pm-1:00 pm. Typically evidence submissions are received via drop box, mailing services, and in person. Please remember, in order to ensure prompt service and to coordinate evidence returns, schedule an appointment ahead of time when planning to make a visit to our laboratory. We are available to help you package your evidence and can assist in the shipment of your evidence to the appropriate TX DPS laboratory depending

on the examination request(s). Services offered by the Laredo Crime Laboratory include: Biology/DNA, Firearms, and Seized Drug analysis.

A complete and legible submission form must accompany all evidence submissions. Because the submission form serves as a contract between your agency and DPS laboratories in which you are formally requesting analysis of evidence, we require the most current submission form when using our service and all are available on our public DPS website (<https://www.dps.texas.gov/>



The Oscar "OJ" Hale Crime Lab building

section/crime-laboratory-service/publications), or on DPSnet for internal customers. Also available is the Laboratory Customer Handbook which is an invaluable resource and provides acceptance policies for all services provided by the laboratory.

Section Spotlight

The Laredo **Biology/DNA Section** consists of:

DNA Supervisor: Nicole Hahn

Biology/DNA Analysts:

Erika Avila

Justin Gant

Jennifer Milan

Angelica Navarro

Valerie Rodriguez

DNA Technicians:

Gabriel Castillo

Jody Maxwell

During the first half of this year, the Biology and DNA section have released a combined total of 608 reports.

Our surrounding agencies have submitted approximately 39 HB-8 Sexual Assault kits, 32 of which have now been completed by our laboratory.

LAREDO LABORATORY

1901 Bob Bullock Loop

Laredo, TX 78043

Phone: (956) 728-2245

E-mail: LaredoCrimeLab@dps.texas.gov

Laboratory Manager: Natalia Sanchez

Quality Manager: Catalina Cuervo

Evidence Submission Updates

◆ Internal customers submitting evidence to be destroyed without analysis: The Region 3 Director has requested that all evidence submitted for destruction only be approved by a sergeant or higher ranking officer. Therefore, all submission forms for evidence submitted for destruction to Laredo, Weslaco, and Corpus Christi labs will need a signature acknowl-

edging the destruction request. The signature can be anywhere on the form, except the box with the dotted outline marked **DPS LABORATORY USE ONLY**.

◆ While it may be helpful for your offense report, a weight is not required to be listed on the laboratory submission form. A net weight of the

analyzed evidence will be included on the issued laboratory report.

DPS policy states:

The Laboratory contacts the customer to clarify any significant discrepancies with the submission form, description or condition of the item(s) of evidence, and whether to proceed with testing.

Lubbock Laboratory News

The Lubbock Laboratory is back to normal, in-person receiving operations. Items are still able to be received through delivery service or the drop box. Evidence is not received in-person after 4:30 p.m., please make an appointment if you are submitting multiple items.

The Lubbock Laboratory recently became fully staffed with a total of 37 employees. This staffing was facilitated by a recently completed remodel project to expand DNA office and analytical space, as well as reconfiguring the Blood Alcohol section for enhanced capacity.

Employee Spotlight



Jack Flanders

Jack Flanders, BA, CLPE, CCSI, has 13 years of experience as a Forensic Scientist for the Texas DPS Latent Print section and more than 14 years of experience comparing friction ridge detail.

Jack earned a B.A. from Texas State University with a major in Physical Anthropology and a minor in Biology. He holds both Latent Print and Crime Scene Investigator certifications through the International Association for Identification.

Jack has served on the Latent Print and Crime Scene Advisory Boards for the crime laboratory. Jack has served on the Board of Directors; as

Sergeant At Arms, 2nd Vice President, and 1st Vice President; and is the current President for the Texas Division of the International Association for Identification.

He graduated from the National Forensic Academy and was the 2016 Session XLI recipient of the Dr. Bill Bass award. Jack is an instructor for the National Forensic Academy and instructs for a portion of the Texas Ranger Advanced Crime Scene class.

Jack has given multiple presentations to various Universities and published a chapter in a Forensic Evidence Management book as well as an article for the Journal of Forensic Identification.

LUBBOCK LABORATORY

1404 Lubbock Business Park Blvd ,

Suite 200

Lubbock, TX 79403

Phone: (806) 740-8900

E-mail: LubbockCrimeLab@dps.texas.gov

Laboratory Manager: Chris Fontenot

Quality Manager: Kevin Condel

Section Spotlights

The **DNA Section** continues to analyze all sexual assault kits in the required 90 days, and the **Blood Alcohol Section** analyzes all cases within 30 days.

Both of these sections have excelled with turnaround times while analyzing hundreds of cases from other laboratories this year to aid our system in providing a high-level of service to our customers across the state.

The laboratory has promoted a number of employees so far this year across multiple disciplines including seven employees to Forensic Scientist II and one employee to Forensic Scientist III.

Community Outreach

The Lubbock Laboratory provided training and outreach to a number of our customers this year including Texas Ranger Training, Advanced Ranger Training, local law enforcement including Amarillo PD and Abilene PD. Additionally the lab provided instruction at Texas Tech University as well as South Plains College.

If your agency has a particular training need, please contact the laboratory manager.

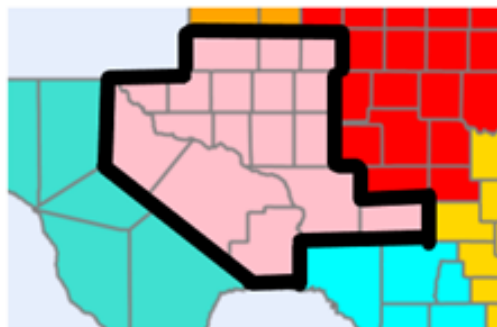
Midland Laboratory News

Just a friendly reminder, when submitting cases to the lab, please use the current submission forms: LAB-201, LAB-202 or LAB-203. The lab no longer accepts LAB-06 or LAB-12.

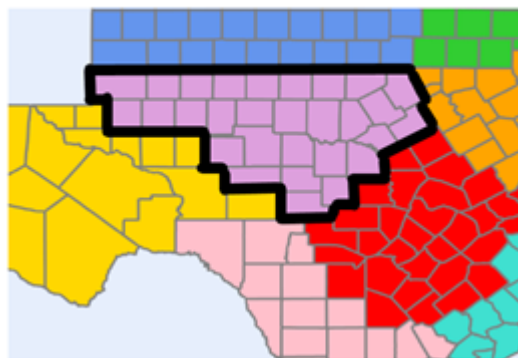
A copy of each can be found on the DPS Website, <https://www.dps.texas.gov/section/crime-laboratory-service/publications>.

January 1, 2021 the Crime Laboratory Division Areas were updated. Please refer to the service area maps located on the DPS website.

Midland Service Area
Seized Drugs



Midland Service Area
Toxicology (Alcohol/Volatiles)



MIDLAND LABORATORY

2405 South Loop 250 West

Midland, TX 79703

Phone: (432) 498-2190

E-mail: MidlandCrimeLab@dps.texas.gov

Laboratory Manager: Marissa Gomez

Quality Manager: Angel Rios

Section Spotlight

Seized Drug Employee Milestone

David Bernal May 2021 — 3 year anniversary

Jose Uribe March 2021 — 1 year anniversary

Toxicology (Alcohol/Volatiles) Employee Milestone

Tracy Ashley February 2021 — 1 year anniversary

Evidence Coordination Employee Milestone

Jeri Coyle March 2021 — 7 year anniversary

Community Outreach

Thank you to all of District Attorney's Offices that helped us reduce our backlog by closing out approximately 300 Seized Drug Cases!!

Tyler Laboratory News

The Tyler Crime Laboratory is in the midst of a major remodel. We've already had our upstairs office area redone to accommodate additional personnel who have been hired in past months to ensure we are able to meet your needs regarding Seized Drug and Blood Alcohol testing.

Our evidence receiving section is currently being reconfigured so that we can have four active evidence receiving stations instead of the current three.

Finally, large portions of the downstairs are being reconfigured to allow us to expand our scope to offer Forensic DNA Testing. This reconfiguration will allow us to continue providing all current testing and add the additional discipline without adding any additional square footage to the laboratory.

The remodel is scheduled for completion by the end of August. Because we still need to hire and train personnel, install and validate instruments, and

obtain accreditation in the new discipline, we're currently targeting summer of 2022 to initiate this service.

More information to come in future newsletters!

Employee News

About this time last year, in the midst of the COVID-19 pandemic, the Tyler Crime Laboratory hired four new Seized Drug team members (Forensic Scientists **James Marzelli**, **Steven Holonich**, and **Katherine Lewis** and Technician **Audrey Alderman**), a new Blood Alcohol team member (Forensic Scientist **Brittany Pettigrew**), and a DNA Technician (**Danna Morris**) who has been working with the Evidence Receiving Team until we are ready to

begin DNA work.

Despite the challenges of the past year they are all through, or very nearly through, training and contributing to providing forensic services to Northeast Texas.

Both the new staff and all who contributed to training them should be commended for their efforts!

TYLER LABORATORY
4700 University Blvd
Tyler, TX 75707
Phone: (903) 939-6021
E-mail: TylerCrimeLab@dps.texas.gov
Laboratory Manager: R. Greg Hilbig
Quality Manager: Emily Hershberger

Section Spotlights

The Tyler **Blood Alcohol Section** added 18 new counties to its service area at the beginning of the year; thanks to the hard work of our three person team we've been able to consistently complete cases within our 30 day turnaround time throughout 2021. On average, we've released Blood Alcohol cases within 19 days of submission! Our **Seized Drug Section** continues to

move towards meeting the 30 day turnaround target. We've reduced the number of unreleased cases from 1,424 to 908 cased during the first 5 months of the year.

Our **Firearms and Toolmark Section** has also worked very hard, they've been short-handed much of the year and are being impacted significantly by the remodel. Thanks to their hard

work and some assistance from the El Paso DPS Laboratory location, they've largely kept up increasing the number of unreleased cases only slightly (from 23 to 26 cases).

Of course, none of this would be possible without the great work performed by our **Evidence Receiving Team!**

Waco Laboratory News

Evidence submission updates

Please use the current submission form listed on the DPS website: <https://www.dps.texas.gov/internetforms/default.aspx>

Main Lab number: 254-759-7180, option 2

Schedule evidence submission and returns to ensure we have the appropriate resources to assist you quickly.

Records Requests:

wacocrimelab@dps.texas.gov

Use the following link to access our public website: <https://www.dps.texas.gov/CrimeLaboratory/Pubs.htm>

Quarterly Backlog and Turn-Around-Time

The Biology/DNA section is currently fully staffed and does not have a backlog. Average Biology screening turn-around time was 79.19 days. Average

DNA turnaround time was 68.43 days.

The Waco Seized Drug section currently has 5 seized drug analysts and a section supervisor. Brian Kivlighn, James Milam and Lindsay Ornelas, along with section supervisor, Lindsay Hatfield, are performing seized drug casework. We have 2 analysts, Melanie Washington and Robert Stanton who are in seized drug training and not performing casework yet. Our backlog is sitting at 1591 cases with an average turn-around time of 84 days.

Section Spotlight

The **Seized Drug Section** mainly utilizes the Gas Chromatograph Mass Spectrometer (GCMS) instrument. Brian Kivlighn performed a validation on our new GCMS, bringing our total number of GCMS instruments to 4. In Waco we also have 2 FTIR instruments and an UV/VIS spectrophotometer.

Biology/DNA Section

The section's average output is 27.4 requests per analyst per month.

Employee News

New Hire

Robert Stanton—SD 01/01/2021

DPS Anniversary

Erin Casmus—Biology/DNA section for 17 years on 02/01/2021

Lindsay Hatfield—Seized Drug section for 16 years on 03/14/2021

Brian Kivlighn—Seized Drug section for 13 years on 02/04/2021

Kara Amis—Evidence Technician for 10 years on 02/01/2021

Lindsay Ornelas—Seized Drug section for 6 years on 03/01/2021

WACO LABORATORY

1617 East Crest Drive

Waco, TX 76705

Phone: (254) 759-7180

E-mail: WacoCrimeLab@dps.texas.gov

Laboratory Manager: Starla Copeland

Quality Manager: Araceli Uptmor

Weslaco Laboratory News

Services offered:

Blood Alcohol, Biology/DNA, Firearms, Friction Ridge and Seized Drugs

Total Staff:

8 administrative, 29 completing case work, 5 vacancies in process of being filled

Counties Served: 30

General overview of case load from Jan 1, 2021 – June 9, 2021

Cases accepted:

4400 cases

Released reports:

1146 Blood alcohol

283 Biology

255 DNA

19 Firearms

60 Friction Ridge

850 Seized Drug

661 Non-testing reports

(closed without analysis or outsourcing reports)

Section Spotlight

Evidence Coordination

Our evidence specialists have developed scheduled appointments for the work week as a way of maintaining efficiency in the workflow for our customers. For non-DPS law enforcement agencies these are based on an hourly structure based on the number of cases being submitted with necessary adjustment made as needed. The evidence receiving section would prefer you call a few days before to schedule evidence submissions when possible.

In addition to walk-ins, DPS law enforcement officers also have access to secure drop off boxes located within

our regional location that allow for alternative and/or after hour submissions as necessary. Please contact our laboratory for further clarification on drop off procedures if needed.

Destruction Only

Operation Lone Star has included support from DPS law enforcement staff outside of this region and as such we would like to remind everyone that our Regional Director requires a supervisor signature on destruction only submission forms.

Community Outreach

Contraband destruction assistance is offered on a routine basis and at no charge throughout the year for both DPS and non-DPS law enforcement agencies.

Please reach out to our Lead Evidence Destruction Specialist a few weeks before for scheduling and completion of additional requirements in prepara-

tion.

To date for 2021, our laboratory has assisted 19 non-DPS law enforcement agencies and destroyed approximately 29,000 lbs of contraband.

WESLACO LABORATORY

2525 N. International Blvd

Weslaco, TX 78596

Phone: (956) 565-7250

E-mail: WeslacoCrimeLab@dps.texas.gov

Laboratory Manager: Jose Zuniga

Quality Manager: Emerald Nazareno