

University of Nebraska - Lincoln

DigitalCommons@University of Nebraska - Lincoln

Conservation and Survey Division

Natural Resources, School of

1990

Significant Rises and Declines in Nebraska Groundwater Levels (from Pre-Development as of Fall 1989)/Registered Irrigation Wells in Nebraska (as of January 1, 1990)

Mark Burbach

University of Nebraska - Lincoln

Follow this and additional works at: <https://digitalcommons.unl.edu/conservationsurvey>



Part of the [Geology Commons](#), [Geomorphology Commons](#), [Hydrology Commons](#), [Paleontology Commons](#), [Sedimentology Commons](#), [Soil Science Commons](#), and the [Stratigraphy Commons](#)

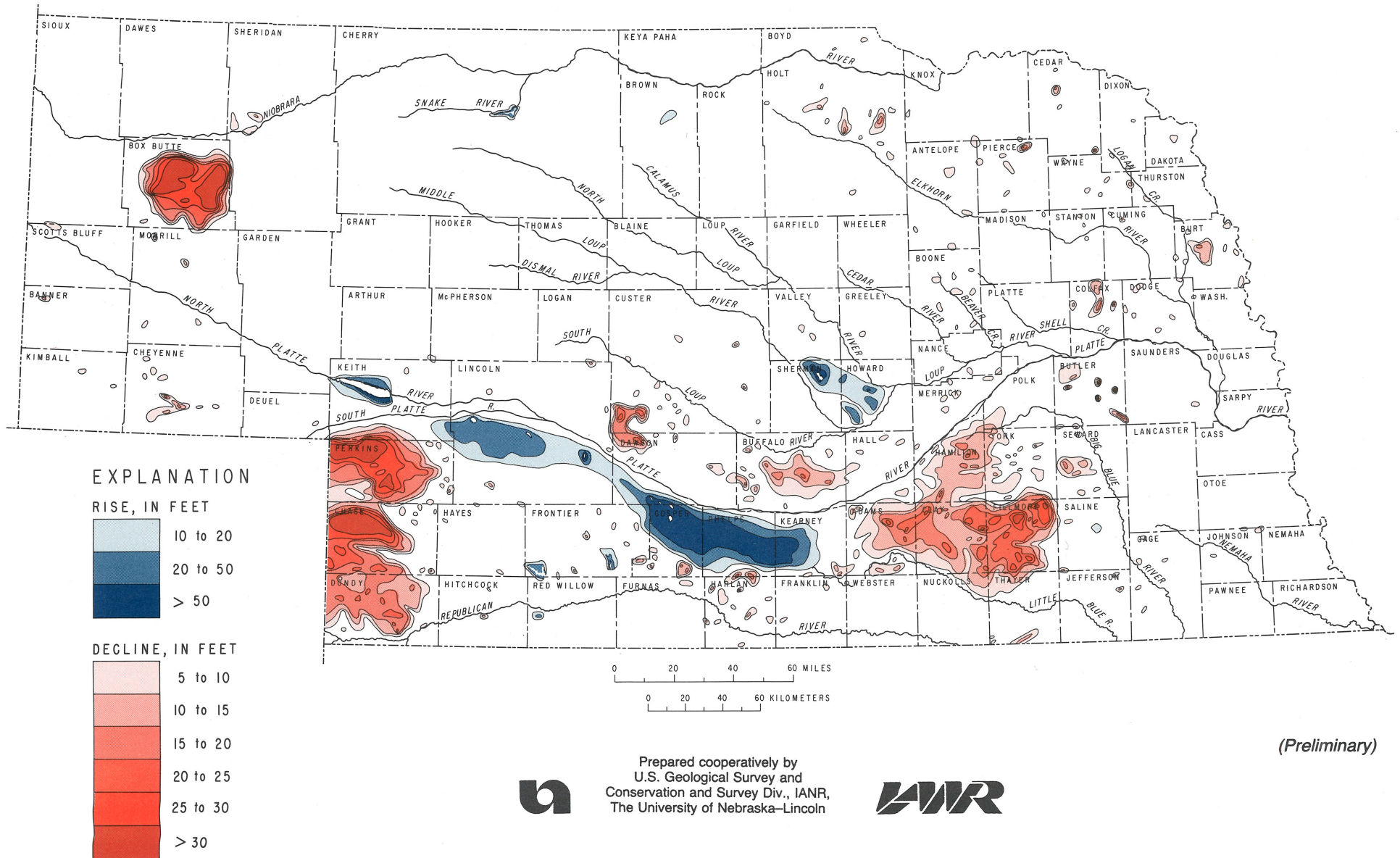
Burbach, Mark, "Significant Rises and Declines in Nebraska Groundwater Levels (from Pre-Development as of Fall 1989)/Registered Irrigation Wells in Nebraska (as of January 1, 1990)" (1990). *Conservation and Survey Division*. 821.

<https://digitalcommons.unl.edu/conservationsurvey/821>

This Article is brought to you for free and open access by the Natural Resources, School of at DigitalCommons@University of Nebraska - Lincoln. It has been accepted for inclusion in Conservation and Survey Division by an authorized administrator of DigitalCommons@University of Nebraska - Lincoln.

Significant Rises and Declines in Nebraska Groundwater Levels

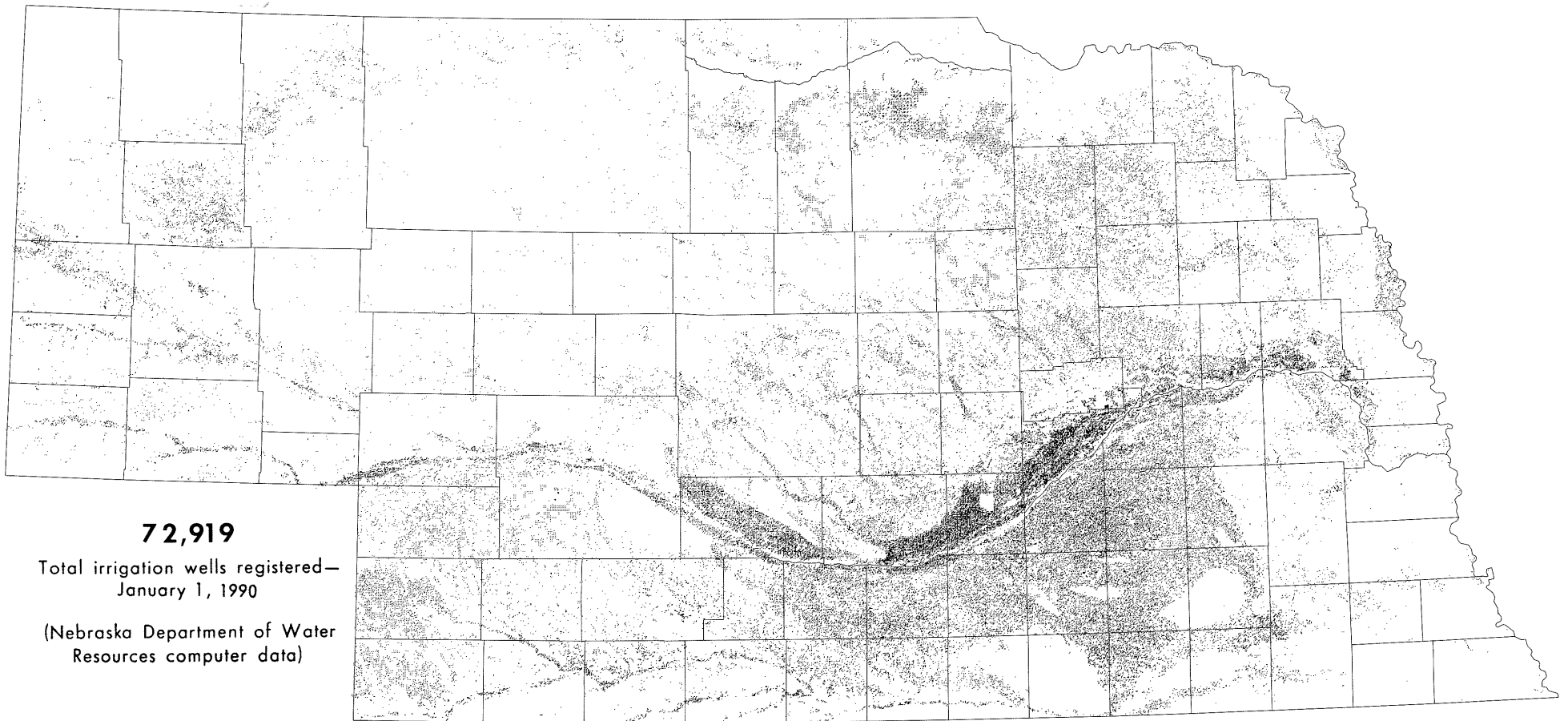
(from predevelopment as of fall 1989)



GM-61

Registered Irrigation Wells in Nebraska

(as of January 1, 1990)



72,919

Total irrigation wells registered—
January 1, 1990

(Nebraska Department of Water
Resources computer data)



Prepared cooperatively by
U.S. Geological Survey and
Conservation and Survey Div., IANR,
The University of Nebraska-Lincoln

