

Washington University School of Medicine

Digital Commons@Becker

2020-Current year OA Pubs

Open Access Publications

12-1-2022

Differential roles of A β 42/40, p-tau231 and p-tau217 for Alzheimer's trial selection and disease monitoring

Nicholas J Ashton

Yan Li

Randall J Bateman

et al.

Follow this and additional works at: https://digitalcommons.wustl.edu/oa_4



Part of the [Medicine and Health Sciences Commons](#)

Differential roles of A β 42/40, p-tau231 and p-tau217 for Alzheimer's trial selection and disease monitoring

Received: 24 April 2022

A full list of authors and their affiliations appears at the end of the paper.

Accepted: 3 October 2022

Published online: 1 December 2022

 Check for updates

Blood biomarkers indicative of Alzheimer's disease (AD) pathology are altered in both preclinical and symptomatic stages of the disease. Distinctive biomarkers may be optimal for the identification of AD pathology or monitoring of disease progression. Blood biomarkers that correlate with changes in cognition and atrophy during the course of the disease could be used in clinical trials to identify successful interventions and thereby accelerate the development of efficient therapies. When disease-modifying treatments become approved for use, efficient blood-based biomarkers might also inform on treatment implementation and management in clinical practice. In the BioFINDER-1 cohort, plasma phosphorylated (p)-tau231 and amyloid- β 42/40 ratio were more changed at lower thresholds of amyloid pathology. Longitudinally, however, only p-tau217 demonstrated marked amyloid-dependent changes over 4–6 years in both preclinical and symptomatic stages of the disease, with no such changes observed in p-tau231, p-tau181, amyloid- β 42/40, glial acidic fibrillary protein or neurofilament light. Only longitudinal increases of p-tau217 were also associated with clinical deterioration and brain atrophy in preclinical AD. The selective longitudinal increase of p-tau217 and its associations with cognitive decline and atrophy was confirmed in an independent cohort (Wisconsin Registry for Alzheimer's Prevention). These findings support the differential association of plasma biomarkers with disease development and strongly highlight p-tau217 as a surrogate marker of disease progression in preclinical and prodromal AD, with impact for the development of new disease-modifying treatments.

The accumulation of amyloid- β (A β) peptides, sequestered into extracellular plaques, and intracellular neurofibrillary tangles comprising tau protein are the defining criteria of AD. These pathologies can be identified in vivo by cerebrospinal fluid (CSF) and positron emission tomography (PET) biomarkers¹. Drug trials for AD are increasingly incorporating these biomarkers as necessary inclusion criterion and evidence of target engagement. However, in the early stages of AD, when individuals with notable cerebral A β accumulation are nonsymptomatic

or present with subjective or mild cognitive complaints, trials are hindered by difficulties in determining drug effects on clinically relevant outcomes. Biomarkers that reflect key pathophysiological processes related to the drug target, or mechanisms putatively downstream of the drug target (for example, tau pathology or neurodegeneration for an anti-amyloid treatment) could be used to inform on promising disease-modifying therapies. Ideal biomarkers for enrichment or inclusion should have large effect sizes at baseline to identify suitable

✉ e-mail: kaj.blennow@neuro.gu.se; oskar.hansson@med.lu.se

trial participants. In contrast, optimal biomarkers for longitudinal monitoring should have a large degree of change over time, which is specific to AD pathology and not observed in those without such pathology (for example, healthy elderly, or other neurodegenerative diseases). As highlighted in the recent Alzheimer's Association Appropriate Use recommendation for use of AD biomarkers², these changes in longitudinal measures of blood biomarkers should also be associated with established measures of AD progression, including worsening in objective cognitive performance and atrophy in brain regions known to be affected by the disease. In future clinical practice, when disease-modifying treatments are approved and are readily available, dynamic biomarkers that either track disease progression, or change towards normalization with efficient treatment, might potentially also be used to follow treatment effects and inform on decisions to initiate, suspend or restart treatment.

For both trial design purposes and future applications in clinical practice, it is beneficial if biomarkers are based on blood rather than CSF or PET, to increase availability and diversity, while reducing overall recruitment time and cost. Recently, blood biomarkers reflecting A β ^{3,4}, tau^{5–8}, neurodegeneration^{9,10} and astrogliosis^{11,12}, have been developed and validated. These markers, in particular different variants of phosphorylated tau (p-tau), exhibit high performance in identifying AD pathology in the differential diagnosis of cognitive decline and demonstrate excellent prognostic performance to predict progression to AD dementia¹³. In addition, p-tau variants in blood have been validated against neuropathology exhibited at postmortem^{5,6,14–16}. Thus, blood biomarkers offer a noninvasive and widely available assessment to accurately identify AD at all disease stages. Now, to aid disease-modifying trials, studies are needed to establish the meaning of blood biomarker change in response to incipient AD pathology and identify plasma biomarkers that accurately reflect meaningful longitudinal brain atrophy and cognitive deterioration. Developing evidence suggests that changes of plasma A β 42/40 (ref. 3) and p-tau (refs. 5,17,18,19–21) are elevated in preclinical disease and might act as an integral enrichment aid for AD trials. In addition, plasma neurofilament light (NfL) and glial acidic fibrillary protein (GFAP) have been shown to be increased in preclinical (GFAP¹²) and prodromal (NfL¹⁰) stages of AD, respectively. Nevertheless, it is not known which of several recently developed high-performing blood biomarkers has the best performance for clinical trial selection and monitoring in future clinical practice.

Therefore, in this study, from two independent cohorts, we compared plasma biomarkers (p-tau181, p-tau217, p-tau231, A β 42/40, GFAP and NfL) for the optimal identification of A β pathology in the early stages of AD (preclinical and mild cognitive impairment (MCI)). In addition, and importantly, we examined whether certain plasma biomarkers specifically change over time in those with confirmed A β pathology and assessed if these longitudinal changes also associated with longitudinal changes in cognition and brain atrophy in preclinical AD.

Results

Study cohorts

This study consisted of both cross-sectional (cohort 1) and longitudinal (cohort 2 and cohort 3) analyses. In the cross-sectional analysis, the goal was to quantify biomarker performance to identify A β pathology in cognitively unimpaired participants (CU, $n = 388$) and patients with MCI ($n = 187$) (Extended Data Table 1). The first longitudinal analysis was performed in cohort 2 (CU, $n = 147$; MCI, $n = 95$), which was a subcohort of the participants from cohort 1 with up to 6 years of longitudinal plasma measures (a median of three samples per participant over a median 4.3 years), magnetic resonance imaging (MRI) and cognitive assessments (Extended Data Table 2). All participants included in cohorts 1 and 2 were recruited from the prospective and longitudinal BioFINDER-1 study (www.biofinder.se) from 2009 to 2014 in southern Sweden. No significant differences between the demographic and clinical data between the participants included in the cohorts 1 and 2 were

observed (Extended Data Table 3). Lastly, we validated the longitudinal results in 161 CU participants of the independent North American cohort Wisconsin Registry for Alzheimer's Prevention (WRAP) (cohort 3, Extended Data Table 4).

Plasma biomarkers to identify A β pathology

In cohort 1, plasma p-tau231 had the highest area under the curve (AUC) to determine CU A β + from CU A β - individuals (AUC = 0.854, 95% confidence interval (CI) 0.806 to 0.902) and had significantly higher accuracy than other plasma biomarkers, except for A β 42/40 (AUC = 0.847, 95% CI 0.806 to 0.889) (Extended Data Table 5). In MCI patients, no significant differences between p-tau biomarkers to distinguish between A β + from A β - individuals were observed (AUCs = 0.828–0.882) (Extended Data Table 5). Next, we analyzed plasma biomarkers when grouping participants by A β -PET centiloids, which is an established measure to increase comparability across A β -PET methods²². Here, we demonstrated that plasma p-tau231 and plasma A β 42/40 significantly changed at lower threshold of PET centiloids (Fig. 1 and Extended Data Table 6) and CSF A β 42/40 levels (Extended Data Fig. 1 and Extended Data Table 6) than other plasma biomarkers. Yet, in this cross-sectional investigation, both p-tau231 and A β 42/40 reached a plateau and had no further changes in participants with more abnormal levels of A β pathology. In contrast, p-tau217 and p-tau181 demonstrated continued increases in participants with higher A β burden.

A β -pathology-dependent longitudinal changes in plasma biomarkers

In cohort 2, we first tested for effects of baseline A β status on longitudinal plasma biomarker levels, for CU (Fig. 2a) and MCI participants (Fig. 2b), as summarized in Table 1 and Extended Data Table 7. Uncorrected P values for the results in Table 1 are presented in Supplementary Table 1. Only plasma p-tau217 had longitudinal increases over time in A β + individuals in comparison with A β - individuals (time \times A β -interaction: $\beta = 0.249$, $P < 0.001$). Likewise in MCI patients, only p-tau217 significantly increased in the A β + group over time compared with the A β -group (time \times A β -interaction: $\beta = 0.270$, $P < 0.001$).

Longitudinal changes in plasma biomarkers and longitudinal changes in cognition and atrophy

We further tested the associations between longitudinal changes of plasma biomarkers levels and longitudinal changes of global cognition and brain atrophy, indexed by Mini Mental State Examination (MMSE, Fig. 3a), Preclinical Alzheimer's disease Cognitive Composite (mPACC, Fig. 3b) and cortical thickness of the typical AD signature regions (Fig. 3c), respectively, in A β + CU participants. Longitudinal change in plasma p-tau217 levels over time was significantly associated with worsening of MMSE ($\beta = -0.308$, $P = 0.0008$, Table 2), mPACC ($\beta = -0.121$, $P = 0.0007$, Table 2) and accelerated atrophy of cortical thickness over 6 years ($\beta = -0.012$, $P < 0.001$, Table 2). There was also a weak association between longitudinal GFAP and brain atrophy ($\beta = -0.007$, $P = 0.040$, Table 2). Uncorrected P values for the results in Table 2 are presented in Supplementary Table 2. When using both slopes of plasma p-tau217 and slopes of plasma GFAP simultaneously to predict longitudinal atrophy, plasma p-tau217 remained significant ($P = 0.002$), while the effect of plasma GFAP was attenuated ($P = 0.77$), suggesting that plasma GFAP did not contribute as a longitudinal proxy of atrophy beyond the effect of plasma p-tau217 in the early stages of AD. In addition to MMSE and mPACC, we also used a test of delayed recall memory, where only the slope of p-tau217 was significantly associated with cognitive decline (Extended Data Table 8). Results were very similar in a sensitivity analysis excluding samples below the lower limit of detection (Supplementary Tables 3–6).

Validation of longitudinal analyses

Finally, we validated the longitudinal BioFINDER-1 findings in 161 CU participants from the WRAP cohort (cohort 3). Again, only p-tau217

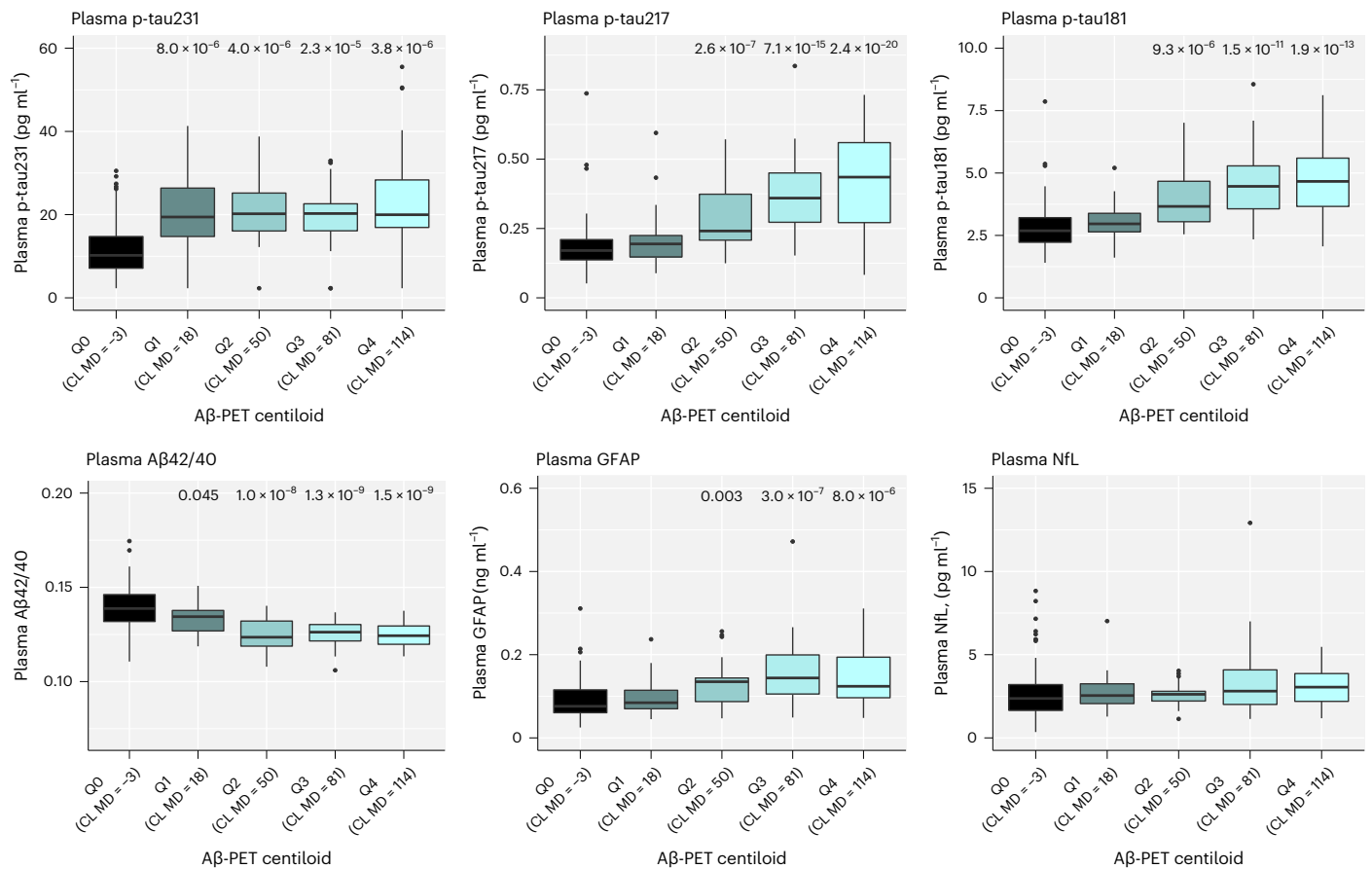


Fig. 1 | Associations between plasma biomarkers and Aβ-PET in BioFINDER-1 (cohort 1). Log10-transformed plasma biomarker levels were compared between the centiloid (CL) groups, <12 (MD -2.6; $n = 139$; reference group), Q1 (range 12.0–35.9; MD 17.9; $n = 27$), Q2 (range 35.9–71.7; MD 50.1; $n = 24$), Q3 (range 71.7–95.3; MD 80.6; $n = 25$) and Q4 (>95.3; MD 114.1; $n = 25$) using univariate general linear models adjusting for age. Untransformed data are presented in the

boxplots to aid interpretation of biomarker values across different comparisons. One NfL outlier is not shown but was included in the statistical analysis. Boxes show interquartile range, the horizontal lines are medians and the whiskers were plotted using the Tukey method. Two-sided P values were corrected for multiple comparisons using Benjamini–Hochberg FDR; uncorrected and corrected P values are shown in Extended Data Table 6.

increased substantially in Aβ+ individuals in comparison with Aβ- participants over 8 years ($\beta = 0.103$, $P \leq 0.001$, Fig. 4a and Table 1). In contrast to the longitudinal BioFINDER-1 results, plasma p-tau181 also showed a significant, but modest, increase in Aβ+ individuals ($\beta = 0.047$, $P = 0.036$). Within Aβ+ CU individuals, however, only the longitudinal increase in plasma p-tau217, but no observed changes of other plasma biomarkers, was significantly associated with declining cognition, as measured with longitudinal MMSE ($\beta = -0.135$, $P = 0.003$, Fig. 4b and Table 2), mPACC ($\beta = -0.098$, $P < 0.001$, Fig. 4c and Table 2) and a test of delayed recall memory over 8 years ($\beta = -0.298$, $P < 0.001$, Extended Data Table 8). Longitudinal changes in cortical thickness of typical AD signature regions were associated with longitudinal p-tau217, GFAP and NfL (Extended Data Fig. 2 and Table 2). However, when using slopes of these three biomarkers simultaneously to predict longitudinal atrophy, plasma p-tau217 remained significant ($P = 0.016$), while the effects of plasma GFAP and NfL were attenuated ($P = 0.91$ and $P = 0.06$, respectively).

Discussion

The main finding of this study, which compared several state-of-the-art plasma biomarkers in early stages of AD, was that the longitudinal trajectory of plasma p-tau217, but not other candidate biomarkers, was closely related to disease progression. The significant and dynamic longitudinal changes in plasma p-tau217 correlated with changes in multiple domains of cognition and cortical thickness of typical AD signature regions. Specific other biomarkers (p-tau231 and Aβ42/40)

had somewhat more pronounced cross-sectional changes in response to early Aβ pathology but did not change in the longitudinal analysis. Taken together, our results add to previous studies which have shown that plasma biomarkers can identify AD pathology, predict future dementia risk, and are associated with in vivo amyloid and tau pathologies¹. The longitudinal changes in plasma p-tau217 suggest that this biomarker should be evaluated in interventional studies as an indicator of therapeutic effects in early stages of AD, as successful disease modification may be expected to be associated with reversion towards normal values for plasma p-tau217, rather than a continuing increase seen in untreated patients.

Our findings support the view that there are important differences in how plasma biomarkers represent AD-related processes. For example, while all p-tau biomarkers relate to AD postmortem pathology^{6,14,15}, in AD brain tissue, p-tau217 is prominently seen in granulovacuolar degeneration bodies and multivesicular bodies in neurons, which is not observed for p-tau181 and p-tau231 (ref. 23). Such differences in neuropathological properties may be related to the different trajectories of different plasma biomarkers. Our results also support the developing evidence that among the most promising plasma AD biomarkers, p-tau231 and Aβ42/40 might have the earliest changes at the incipient stages of Aβ accumulation^{5,17,18}. However, p-tau217 is also changing notably in preclinical AD^{18,20}. Interestingly, p-tau231, and Aβ42/40 are not more changed in individuals with more advanced Aβ pathology, and a plateau is observed, particularly for p-tau231, at a phase when p-tau217 is continuing to increase. This cross-sectional observation

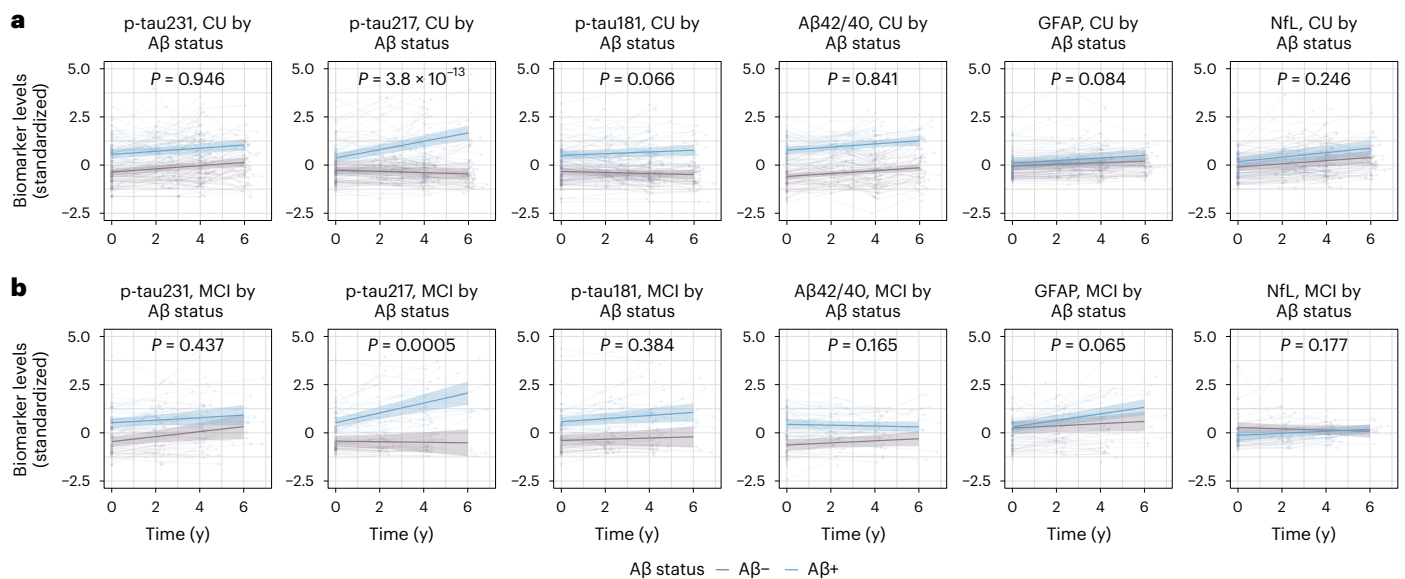


Fig. 2 | Longitudinal plasma biomarker changes in BioFINDER-1 (cohort 2). **a, b**, Longitudinal plasma biomarker changes stratified by β -amyloid status (negative, purple; positive, blue) in CU (**a**) and MCI (**b**). The x axis shows time from first plasma biomarker sample. Shaded areas represent 95% confidence intervals of the regression lines plotted from linear mixed effects models with the interaction between time and A β status as well as baseline A β status as independent variables and adjusting for age and sex. All p-tau biomarkers and

A β 42/40 were significantly changed in A β + individuals at baseline in both CU and MCI ($P < 0.001$). Two-sided P values were corrected for multiple comparisons using Benjamini–Hochberg FDR; corrected and uncorrected P values are shown in Table 1 and Supplementary Table 1. Several outliers (p-tau231, $n = 1$; p-tau217, $n = 9$; p-tau181, $n = 5$; GFAP, $n = 4$; NfL, $n = 4$) are not shown but these data were included in the statistical analysis.

Table 1 | Associations of A β status with longitudinal plasma biomarker levels in BioFINDER-1 and WRAP

	BioFINDER-1 Cognitively unimpaired ^a	BioFINDER-1 Mild cognitive impairment ^a	WRAP Cognitively unimpaired ^b
Plasma biomarkers	Time \times A β interaction β estimate (P value)		
p-tau231	-0.002 (0.946)	-0.063 (0.437)	-0.001 (0.951)
p-tau217	0.249 (3.8×10^{-13})	0.270 (0.0005)	0.103 (5.4×10^{-6})
p-tau181	0.073 (0.066)	0.050 (0.384)	0.047 (0.036)
A β 42/40	0.007 (0.841)	-0.076 (0.165)	-0.019 (0.345)
GFAP	0.028 (0.084)	0.113 (0.065)	0.023 (0.273)
NfL	0.035 (0.246)	0.084 (0.177)	-0.039 (0.273)

β estimates and P values are from linear mixed effects models with the interaction between time and A β status as the independent variable, adjusted for age and sex. Two-sided P values were adjusted for multiple comparisons ($n = 24$, BioFINDER-1; $n = 12$, WRAP) using Benjamini–Hochberg FDR. Data tables with uncorrected P values are displayed in Supplementary Table 1. ^a A β 42/40 data were available for 130 CU and 82 MCI; GFAP data were available for 124 CU and 82 MCI; NfL data were available for 125 CU and 82 MCI in BioFINDER-1. ^b Data values for two participants were missing for p-tau231, p-tau181, A β 42/40, GFAP and NfL in WRAP.

is corroborated by our new longitudinal data, from two independent cohorts, demonstrating that longitudinal increases of p-tau217 in A β + individuals are associated with worsening cognitive performance and brain atrophy in preclinical AD. Such independent associations were not observed for any other plasma biomarker tested in this study. This includes a marker of global neurodegeneration, plasma NfL, which has been shown to associate with clinical progression in patients with more advanced symptoms^{24,25}. However, in our longitudinal preclinical data, this association between plasma NfL and disease progression is not observed. Our results confirm that p-tau217 is dynamic biomarker, even in preclinical AD¹⁹, accurately reflecting the progression of AD pathology, and now this is shown in comparison with a compendium of blood biomarkers also reported to reflect AD pathophysiology. The early

changes of all p-tau plasma biomarkers, suggest that they are initially reflective of A β dysmetabolism²⁶. However, over time, p-tau217 is the only biomarker that clearly changes with disease progression, which is in line with earlier observations that p-tau217 may later become more reflective of tau pathology, after the initial deposition of A β ²⁷. In symptomatic AD, several studies find similar diagnostic accuracy of p-tau181 and p-tau217 (refs. ^{28,29}); however, most reports demonstrate larger fold-changes for p-tau217 (ref. ²⁸). This is likely attributed to the longitudinal and dynamic increase of p-tau217 shown in this study, which is associated with metrics of AD progression. Data from CSF studies have also shown that p-tau217 exhibits larger fold-changes in symptomatic phases³⁰, while subtle changes of p-tau231 are observed with regional A β deposition³¹ and these results now translate to blood.

Our results on baseline performance for biomarkers to detect A β pathology are promising for the use of plasma biomarkers as instruments to guide selection of participants into clinical trials. The results for longitudinal changes in plasma p-tau217 provide rationale for future analyses in clinical trials to determine whether treatment-induced reductions in plasma p-tau217 towards normal values are clearly associated with clinical beneficial effects. If such a relationship can be established in clinical trials, future trials targeting early-stage AD might incorporate plasma p-tau217 as a potential surrogate endpoint². Importantly, a recent clinical trial evaluating donanemab, an immunotherapy efficiently removing A β aggregates from the brain, has shown 23% reduction in levels of plasma p-tau217 within 6–18 months of treatment when the placebo group continued to increase³².

In a longer perspective, our results may also be important for clinical practice. It is possible that one or several disease-modifying treatments against AD will become widely available for clinical use within a few years. This will bring an urgent need to make informed clinical decisions in millions of patients. Biomarkers will then be required to both identify AD and track progression of the disease with objective measures. This need will quickly overcome the available PET and CSF resources in healthcare systems worldwide, and blood biomarkers will be essential. Future clinical studies that include active interventions

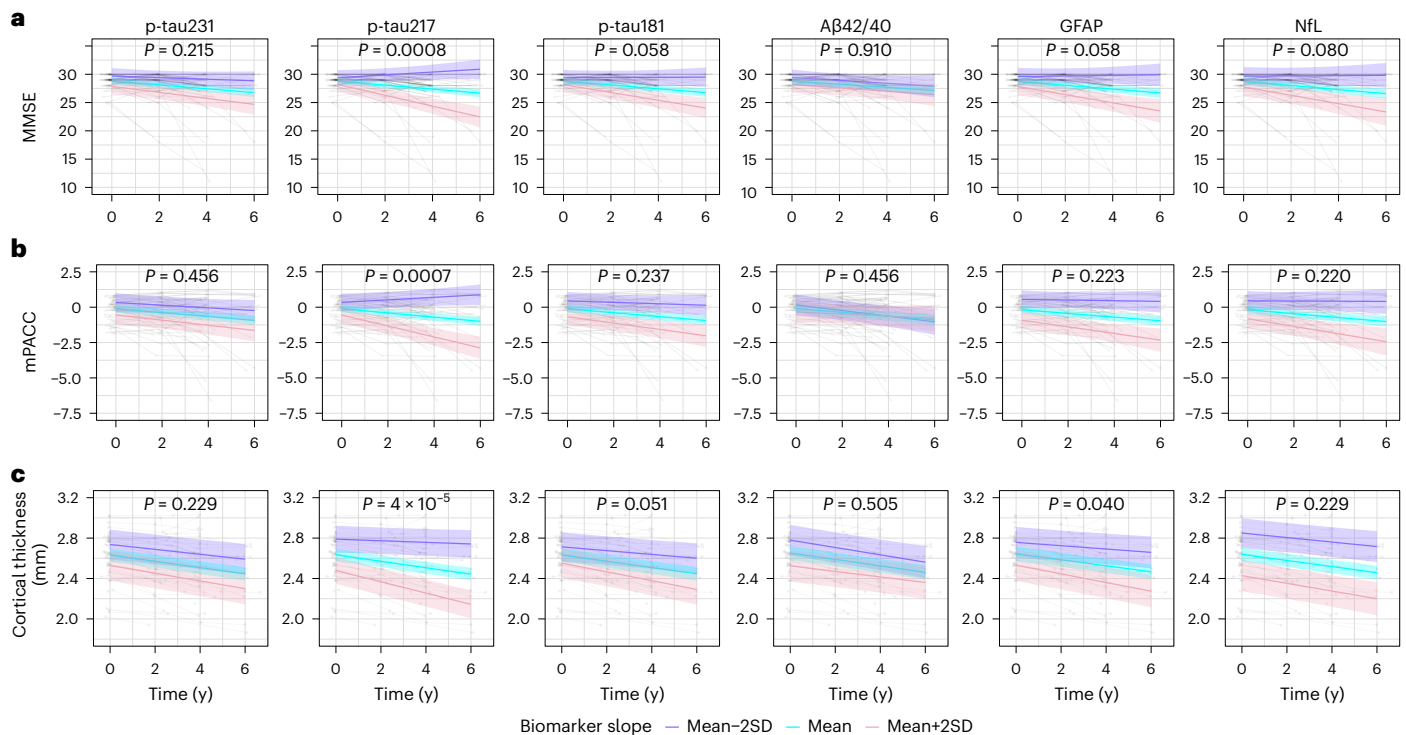


Fig. 3 | Associations of longitudinal plasma biomarkers with longitudinal cognitive decline and brain atrophy in BioFINDER-1 (cohort 2). a–c, The association between longitudinal plasma biomarkers and MMSE (a), mPACC (b) and cortical thickness of the typical AD signature regions (c) in Aβ positive cognitively unimpaired participants. The x axis shows time from first plasma biomarker samples. The model trajectories, shown as the mean slope and the mean ± 2 SD with 95% CI (shaded area), were plotted from linear mixed effects

models with the interaction between time and standardized plasma biomarker slopes (derived from subject-level linear regression models) as an independent variable adjusting for age and sex; associations with cognition were also adjusted for years of education. Two-sided *P* values were corrected for multiple comparisons using Benjamini–Hochberg FDR; corrected and uncorrected *P* values are shown in Table 2 and Supplementary Table 2.

Table 2 | Associations between longitudinal plasma biomarkers and longitudinal MMSE, mPACC and cortical thickness of the typical AD signature regions in Aβ-positive cognitively unimpaired participants in BioFINDER-1 and WRAP

Plasma biomarkers	BioFINDER-1			WRAP		
	MMSE ^a	mPACC ^a	Cortical thickness of the typical AD signature regions ^b	MMSE ^c	mPACC ^c	Cortical thickness of the typical AD signature regions ^d
	β estimate (<i>P</i> value)					
p-tau231	-0.100 (0.215)	-0.022 (0.456)	-0.004 (0.229)	-0.030 (0.737)	-0.020 (0.427)	-0.002 (0.363)
p-tau217	-0.308 (0.0008)	-0.121 (0.0007)	-0.012 (4.1×10 ⁻⁵)	-0.135 (0.003)	-0.098 (9.0×10 ⁻⁷)	-0.005 (0.021)
p-tau181	-0.180 (0.058)	-0.044 (0.237)	-0.006 (0.051)	-0.075 (0.215)	-0.030 (0.317)	0.004 (0.148)
Aβ42/40	-0.010 (0.910)	0.032 (0.456)	0.002 (0.505)	-0.014 (0.754)	-0.032 (0.317)	-0.003 (0.245)
GFAP	-0.198 (0.058)	-0.054 (0.223)	-0.007 (0.040)	0.013 (0.754)	-0.007 (0.745)	-0.004 (0.051)
NfL	-0.194 (0.080)	-0.067 (0.220)	-0.004 (0.229)	-0.046 (0.527)	-0.024 (0.379)	-0.004 (0.034)

β estimates and *P* values are from linear mixed effects models with the interaction between time and standardized plasma biomarker slopes (derived from subject-level linear regression models) as the independent variable, adjusted for age and sex; associations with cognition were also adjusted for years of education. Two-sided *P* values were adjusted for multiple comparisons within each variable (*n*=6) using Benjamini–Hochberg FDR. Data tables with uncorrected *P* values are displayed in Supplementary Table 2. ^a Longitudinal MMSE, mPACC and plasma biomarker data were available for 56 (p-tau) and 49 (Aβ42/40, GFAP and NfL) Aβ-positive cognitively unimpaired BioFINDER-1 participants. ^b Longitudinal cortical thickness of the typical AD signature regions and plasma biomarker data were available for 56 (p-tau) and 48 (Aβ42/40, GFAP and NfL) Aβ-positive cognitively unimpaired BioFINDER-1 participants. ^c Longitudinal MMSE, mPACC and plasma biomarker data were available for 66 (p-tau217) and 65 (other biomarkers) Aβ-positive cognitively unimpaired participants in WRAP. ^d Longitudinal cortical thickness of the typical AD signature regions and plasma biomarker data were available for 65 Aβ-positive cognitively unimpaired participants in WRAP.

are warranted to best determine how to incorporate longitudinal blood biomarker measures into clinical workflows, for example, studying whether a disease-modifying treatment could be temporarily halted when plasma p-tau217 values have been normalized. Further, the longitudinal results of the current study suggest that plasma p-tau217 is a key biomarker to be used when assessing already banked samples from performed clinical trials, which have evaluated relevant therapies or

lifestyle interventions, to determine whether such treatments affect the development of AD-related pathology.

Although this study is the largest that simultaneously tests several state-of-the-art and relevant plasma biomarkers for AD in early disease stages with a longitudinal design, the sample sizes in the longitudinal analyses of BioFINDER-1 were still relatively small. Therefore, it was essential that such longitudinal findings were independently replicated

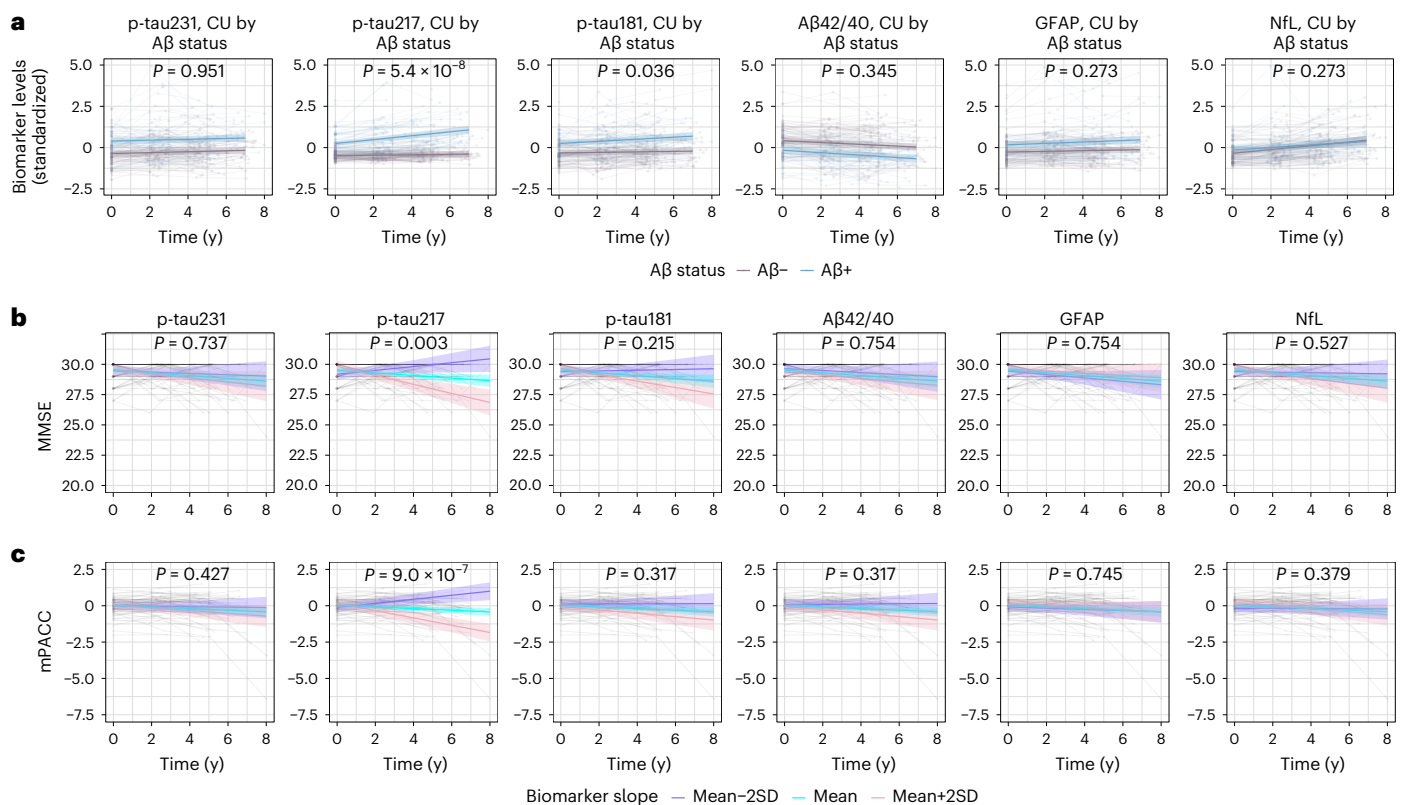


Fig. 4 | Longitudinal plasma biomarker changes and their association with cognitive decline in WRAP (cohort 3). **a**, Longitudinal plasma biomarker change stratified by Aβ status (negative, purple; positive, blue) in CU participants. The average regression lines with 95% CI (shaded area) were plotted from linear mixed effects models with the interaction between time and Aβ status as well as baseline Aβ status independent variables and adjusting for age and sex. All p-tau biomarkers, Aβ42/40 ($P < 0.001$) and GFAP ($P = 0.005$) were significantly changed in Aβ+ individuals at baseline. Several outliers (p-tau217, $n = 5$; p-tau181, $n = 2$; GFAP, $n = 1$; NfL, $n = 3$) are not shown in **(a)** but these data were included in the statistical analysis. **b, c**, The association between longitudinal plasma biomarkers

and MMSE **(b)** and mPACC **(c)** in Aβ-positive cognitively unimpaired participants. The model trajectories, shown as the mean slope and the mean ± 2 SD with 95% CI (shaded area), were plotted from linear mixed effects models with the interaction between time and standardized plasma biomarker slopes (derived from subject-level linear regression models) as an independent variable adjusting for age, sex and years of education. Two-sided P values were corrected for multiple comparisons using Benjamini–Hochberg FDR; corrected and uncorrected P values are shown in Tables 1 and 2 and Supplementary Tables 1 and 2. One outlier with MMSE value of 17 is not shown in **b** but was included in the statistical analysis. The x axes in **a–c** show time from first plasma biomarker samples.

in the WRAP cohort. Still, larger studies on more heterogeneous populations are needed to confirm the relative differences in biomarker trajectories before firm conclusions can be drawn for the preferential use of longitudinal measures of certain plasma biomarkers in clinical practice and trials. We acknowledge that the assay designs (for example, antibody and/or analytical platform differences) also have different performances and may have contributed to our findings. For example, p-tau231 and p-tau217 assays have different properties of sensitivity due to healthy individuals being below the lower limit of detection more often for the p-tau217 measurements³³. Other p-tau217 assays may have more sensitive performance at the earliest changes of Aβ-PET³⁴. Lastly, plasma biomarker studies published to date are heavily weighted towards Caucasian participants. A recent pilot report demonstrated that plasma p-tau231 and p-tau181 were less accurate for detecting abnormalities in Aβ pathology in an African American population³⁵. Yet, p-tau217 has shown good diagnostic accuracy in diverse multiethnic populations³⁶. Therefore, establishing whether the longitudinal trajectories and response to early Aβ dysmetabolism of blood biomarkers can be directly translated to different populations warrants detailed investigation.

In conclusion, plasma AD biomarkers may offer complementary information as noninvasive, widely accessible and impartial measures for improved design of clinical trials. Incorporation of these measures in clinical trial design may accelerate the development

and implementation of successful prevention and treatment of AD. Plasma p-tau231, Aβ42/40 and p-tau217 appear to be biomarkers changing early in response to Aβ pathology. Our cross-sectional data suggest earlier changes for p-tau231 and Aβ42/40 which should be explored further as screening tools for preclinical Aβ deposition. However, in terms of monitoring dynamic disease progression, plasma p-tau217 has clear advantages due to its continued increase during the early disease development and associations to AD measures of cognitive decline and brain atrophy which was not robustly observed for any other plasma biomarker. This supports the potential use of plasma p-tau217 as a surrogate outcome marker in ongoing and future intervention trials as well as for tracking disease progression in clinical practice.

Online content

Any methods, additional references, Nature Portfolio reporting summaries, source data, extended data, supplementary information, acknowledgements, peer review information; details of author contributions and competing interests; and statements of data and code availability are available at <https://doi.org/10.1038/s41591-022-02074-w>.

References

- Hansson, O. Biomarkers for neurodegenerative diseases. *Nat. Med.* **27**, 954–963 (2021).

2. Hansson O. et al. The Alzheimer's Association appropriate use recommendations for blood biomarkers in Alzheimer's disease. *Alzheimers Dement.* <https://doi.org/10.1002/alz.12756> (2022).
3. Schindler, S. E. et al. High-precision plasma beta-amyloid 42/40 predicts current and future brain amyloidosis. *Neurology* **93**, e1647–e1659 (2019).
4. Janelidze, S. et al. Head-to-head comparison of 8 plasma amyloid-beta 42/40 assays in Alzheimer disease. *JAMA Neurol.* **78**, 1375–1382 (2021).
5. Ashton, N. J. et al. Plasma p-tau231: a new biomarker for incipient Alzheimer's disease pathology. *Acta Neuropathol.* **141**, 709–724 (2021).
6. Palmqvist, S. et al. Discriminative accuracy of plasma phospho-tau217 for Alzheimer disease vs other neurodegenerative disorders. *JAMA* **324**, 772–781 (2020).
7. Karikari, T. K. et al. Blood phosphorylated tau 181 as a biomarker for Alzheimer's disease: a diagnostic performance and prediction modelling study using data from four prospective cohorts. *Lancet Neurol.* **19**, 422–433 (2020).
8. Janelidze, S. et al. Plasma P-tau181 in Alzheimer's disease: relationship to other biomarkers, differential diagnosis, neuropathology and longitudinal progression to Alzheimer's dementia. *Nat. Med.* **26**, 379–386 (2020).
9. Ashton, N. J. et al. A multicentre validation study of the diagnostic value of plasma neurofilament light. *Nat. Commun.* **12**, 3400 (2021).
10. Mattsson, N., Andreasson, U., Zetterberg, H., Blennow, K. & Alzheimer's Disease Neuroimaging Initiative Association of plasma neurofilament light with neurodegeneration in patients with Alzheimer disease. *JAMA Neurol.* **74**, 557–566 (2017).
11. Pereira J. B. et al. Plasma GFAP is an early marker of amyloid-beta but not tau pathology in Alzheimer's disease. *Brain* **144**, 3505–3516 (2021).
12. Benedet, A. L. et al. Differences between plasma and cerebrospinal fluid glial fibrillary acidic protein levels across the Alzheimer disease continuum. *JAMA Neurol.* **78**, 1471–1483 (2021).
13. Palmqvist, S. et al. Prediction of future Alzheimer's disease dementia using plasma phospho-tau combined with other accessible measures. *Nat. Med.* **27**, 1034–1042 (2021).
14. Lantero Rodriguez, J. et al. Plasma p-tau181 accurately predicts Alzheimer's disease pathology at least 8 years prior to post-mortem and improves the clinical characterisation of cognitive decline. *Acta Neuropathol.* **140**, 267–278 (2020).
15. Smirnov D. S. et al. Plasma biomarkers for Alzheimer's disease in relation to neuropathology and cognitive change. *Acta Neuropathol.* **143**, 487–503 (2022).
16. Salvadó S. et al. Specific associations between plasma biomarkers and postmortem amyloid plaque and neurofibrillary tau tangle loads. Preprint at medRxiv <https://doi.org/10.1101/2022.08.22.22279052> (2022).
17. Meyer P. F. et al. Plasma p-tau231, p-tau181, PET biomarkers, and cognitive change in older adults. *Ann. Neurol.* **91**, 548–560 (2022).
18. Mila-Aloma M. et al. Plasma p-tau231 and p-tau217 as state markers of amyloid-beta pathology in preclinical Alzheimer's disease. *Nat. Med.* **28**, 1797–1801 (2022).
19. Mattsson-Carlgrén, N. et al. Longitudinal plasma p-tau217 is increased in early stages of Alzheimer's disease. *Brain* **143**, 3234–3241 (2020).
20. Janelidze, S. et al. Detecting amyloid positivity in early Alzheimer's disease using combinations of plasma Aβ42/Aβ40 and p-tau. *Alzheimers Dement.* **18**, 283–293 (2022).
21. Barthelemy, N. R. et al. A soluble phosphorylated tau signature links tau, amyloid and the evolution of stages of dominantly inherited Alzheimer's disease. *Nat. Med.* **26**, 398–407 (2020).
22. Klunk, W. E. et al. The Centiloid Project: standardizing quantitative amyloid plaque estimation by PET. *Alzheimers Dement.* **11**, 1–15 e11–14 (2015).
23. Wennstrom, M. et al. Cellular localization of p-tau217 in brain and its association with p-tau217 plasma levels. *Acta Neuropathol. Commun.* **10**, 3 (2022).
24. Mattsson, N., Cullen, N. C., Andreasson, U., Zetterberg, H. & Blennow, K. Association between longitudinal plasma neurofilament light and neurodegeneration in patients with Alzheimer disease. *JAMA Neurol.* **76**, 791–799 (2019).
25. Benedet, A. L. et al. Stage-specific links between plasma neurofilament light and imaging biomarkers of Alzheimer's disease. *Brain* **143**, 3793–3804 (2020).
26. Kaeser, S. A. et al. CSF p-tau increase in response to Aβ-type and Danish-type cerebral amyloidosis and in the absence of neurofibrillary tangles. *Acta Neuropathol.* **143**, 287–290 (2022).
27. Mattsson-Carlgrén, N. et al. Soluble P-tau217 reflects amyloid and tau pathology and mediates the association of amyloid with tau. *EMBO Mol. Med.* **13**, e14022 (2021).
28. Thijssen, E. H. et al. Plasma phosphorylated tau 217 and phosphorylated tau 181 as biomarkers in Alzheimer's disease and frontotemporal lobar degeneration: a retrospective diagnostic performance study. *Lancet Neurol.* **20**, 739–752 (2021).
29. Karikari T. K. et al. Blood phospho-tau in Alzheimer disease: analysis, interpretation, and clinical utility. *Nat. Rev. Neurol.* **18**, 400–418 (2022).
30. Leuzy A. et al. Comparing the clinical utility and diagnostic performance of cerebrospinal fluid p-tau181, p-tau217 and p-tau231 assays. *Neurology* **97**, e1681–e1694 (2021).
31. Ashton, N. J. et al. Cerebrospinal fluid p-tau231 as an early indicator of emerging pathology in Alzheimer's disease. *EBioMedicine* **76**, 103836 (2022).
32. Pontecorvo M. J. et al. Association of Donanemab Treatment With Exploratory Plasma Biomarkers in Early Symptomatic Alzheimer Disease: A Secondary Analysis of the TRAILBLAZER-ALZ Randomized Clinical Trial. *JAMA Neurol.* Preprint at <https://pubmed.ncbi.nlm.nih.gov/36251300/> (2022).
33. Bayoumy, S. et al. Clinical and analytical comparison of six Simoa assays for plasma P-tau isoforms P-tau181, P-tau217, and P-tau231. *Alzheimers Res. Ther.* **13**, 198 (2021).
34. Barthelemy, N. R., Horie, K., Sato, C. & Bateman, R. J. Blood plasma phosphorylated-tau isoforms track CNS change in Alzheimer's disease. *J. Exp. Med.* **217**, e20200861 (2020).
35. Schindler S. E. et al. Effect of race on prediction of brain amyloidosis by plasma Aβ42/Aβ40, phosphorylated tau, and neurofilament light. *Neurology* **99**, e245–e257 (2022).
36. Brickman, A. M. et al. Plasma p-tau181, p-tau217, and other blood-based Alzheimer's disease biomarkers in a multi-ethnic, community study. *Alzheimers Dement.* **17**, 1353–1364 (2021).

Publisher's note Springer Nature remains neutral with regard to jurisdictional claims in published maps and institutional affiliations.

Open Access This article is licensed under a Creative Commons Attribution 4.0 International License, which permits use, sharing, adaptation, distribution and reproduction in any medium or format, as long as you give appropriate credit to the original author(s) and the source, provide a link to the Creative Commons license, and indicate if changes were made. The images or other third party material in this article are included in the article's Creative Commons license, unless indicated otherwise in a credit line to the material. If material is not included in the article's Creative Commons license and your intended use is not permitted by statutory regulation or exceeds the permitted use, you will need to obtain permission directly from the copyright holder. To view a copy of this license, visit <http://creativecommons.org/licenses/by/4.0/>.

© The Author(s) 2022

Nicholas J. Ashton^{1,2,3,4,20}, **Shorena Janelidze**^{5,20}, **Niklas Mattsson-Carlgren**^{5,6,7,20}, **Alexa Pichet Binette**⁵, **Olof Strandberg**⁵, **Wagner S. Brum**^{1,8}, **Thomas K. Karikari**^{1,9}, **Fernando González-Ortiz**¹, **Guglielmo Di Molfetta**¹, **Francisco J. Meda**¹, **Erin M. Jonaitis**^{10,11}, **Rebecca Langhough Kosciak**^{10,11}, **Karly Cody**^{10,11}, **Tobey J. Betthausen**^{10,11}, **Yan Li**^{12,13}, **Eugeen Vanmechelen**¹⁴, **Sebastian Palmqvist**^{15,15}, **Erik Stomrud**^{5,15}, **Randall J. Bateman**^{12,13}, **Henrik Zetterberg**^{1,16,17,18,19}, **Sterling C. Johnson**^{10,11}, **Kaj Blennow**^{1,14,21} ✉ & **Oskar Hansson**^{5,15,21} ✉

¹Department of Psychiatry and Neurochemistry, Institute of Neuroscience and Physiology, the Sahlgrenska Academy at the University of Gothenburg, Mölndal, Sweden. ²King's College London, Institute of Psychiatry, Psychology and Neuroscience, Maurice Wohl Institute Clinical Neuroscience Institute, London, UK. ³NIHR Biomedical Research Centre for Mental Health and Biomedical Research Unit for Dementia at South London and Maudsley NHS Foundation, London, UK. ⁴Centre for Age-Related Medicine, Stavanger University Hospital, Stavanger, Norway. ⁵Clinical Memory Research Unit, Faculty of Medicine, Lund University, Lund, Sweden. ⁶Department of Neurology, Skåne University Hospital, Lund University, Lund, Sweden. ⁷Wallenberg Center for Molecular Medicine, Lund University, Lund, Sweden. ⁸Graduate Program in Biological Sciences: Biochemistry, Universidade Federal do Rio Grande do Sul (UFRGS), Porto Alegre, Brazil. ⁹Department of Psychiatry, University of Pittsburgh, Pittsburgh, PA, USA. ¹⁰Wisconsin Alzheimer's Institute, School of Medicine and Public Health, University of Wisconsin, Madison, WI, USA. ¹¹Wisconsin Alzheimer's Disease Research Center, School of Medicine and Public Health, University of Wisconsin, Madison, WI, USA. ¹²Department of Neurology, Washington University School of Medicine, St. Louis, MO, USA. ¹³SILQ Center, Washington University School of Medicine, St. Louis, MO, USA. ¹⁴ADx NeuroSciences, Technologiepark 94, Ghent, Belgium. ¹⁵Memory Clinic, Skåne University Hospital, Malmö, Sweden. ¹⁶Clinical Neurochemistry Laboratory, Sahlgrenska University Hospital, Mölndal, Sweden. ¹⁷Department of Neurodegenerative Disease, UCL Institute of Neurology, Queen Square, London, UK. ¹⁸UK Dementia Research Institute at UCL, London, UK. ¹⁹Hong Kong Center for Neurodegenerative Diseases, Hong Kong, China. ²⁰These authors contributed equally: Nicholas J. Ashton, Shorena Janelidze, Niklas Mattsson-Carlgren. ²¹These authors jointly supervised this work: Kaj Blennow, Oskar Hansson. ✉e-mail: kaj.blennow@neuro.gu.se; oskar.hansson@med.lu.se

Methods

Participants

All participants for cohort 1 and cohort 2 were recruited in the prospective and longitudinal BioFINDER-1 study (www.biofinder.se) from 2009 to 2014 in southern Sweden. The participants included CU participants (recruited as cognitively normal controls or as subjective cognitive decline patients) and patients with MCI. Details on recruitment, exclusion and inclusion criteria have been presented before^{13,37,38}. All participants underwent lumbar puncture at baseline for CSF sampling. Plasma samples were taken at baseline and every second year for up to 6 years. Cognitive function was assessed with MMSE, Word list memory delayed recall (from the Alzheimer's Disease Assessment Scale (ADAS-cog)) and mPACC. The mPACC was calculated as the average of five z scores for tests of global cognition (MMSE), memory (the word list delayed recall test from the cognitive subscale from the ADAS-cog, counted twice to preserve the weight on memory from the original PACC), executive function (Trail Making Test B) and verbal ability (animal fluency)^{39–41}. All participants in cohort 3 were from WRAP. Design and assessments including cognitive battery of the WRAP study are described in detail elsewhere^{42,43}. In brief, all participants were cognitively normal at first blood collection, recruited from the populations and enriched for positive parental history of AD and were between 40 and 65 years at baseline. The components of the mPACC were MMSE, the Logical Memory Delayed Recall test, the Trail Making Test B and the Rey Auditory Verbal Learning Test total score over five learning trials. The study was approved by the Regional Ethics Committee in Lund, Sweden. The WRAP data were collected under a University of Wisconsin-Madison Institutional Review Board protocol. All participants in all three cohorts gave their informed consent to participate in the study and the data were collected according to the Declaration of Helsinki.

Biochemical analyses

CSF concentrations of A β 42 and A β 40 were determined using ELISA kits (Euroimmun) or the NeuroToolKit on Cobas e601 (Roche Diagnostics) in the BioFINDER-1 longitudinal and cross-sectional samples, respectively. CSF A β 42/40 Euroimmun data were binarized using a threshold of 0.091 (ref.²⁰) and for NeuroToolKit CSF A β 42/40 we used a threshold of 0.066 determined using mixture modeling. Plasma concentrations of p-tau217 and p-tau181 were measured using an immunoassay developed by Lilly Research Laboratories at Lund University^{19,20}. Plasma p-tau231 was analyzed using in-house single molecular arrays (Simoa) developed at the University of Gothenburg⁵. Plasma concentrations of A β 42 and A β 40 were quantified using an immunoprecipitation-coupled mass spectrometry method developed at Washington University⁴. Plasma GFAP and NFL were analyzed using in-house Elecsys prototype plasma immunoassays (not commercially available) on Cobas e601 analyzers (Roche Diagnostics). Plasma concentrations of p-tau231, p-tau217 and p-tau181 were below the detection limit of the assay in 4.0%, 16.0% and 9.8% of the samples, respectively, which is in the same range as in previous studies^{6,8}. In WRAP, p-tau217 and p-tau231 were analyzed using the same biochemical methods as the BioFINDER-1 cohort. Plasma p-tau181, A β 42, A β 40, GFAP and NFL were measured using a commercially available immunoassay from Quanterix (p-Tau-181 V2 Advantage Kit and Neurology 4-Plex E). In WRAP, plasma concentrations of p-tau231, p-tau217 and p-tau181 were below the detection limit of the assay in 0.2%, 1.2% and 0.2% of the samples, respectively.

Neuroimaging

In BioFINDER-1, a 3T MRI scanner (Siemens Tim Trio 3T) was used for anatomical T1-weighted imaging. Magnetization-prepared rapid gradient-echo (MP-RAGE) images (repetition time (TR) = 1.950 ms, time to echo (TE) = 3.4 ms, 1 mm isotropic voxels, 178 slices) and the FreeSurfer image analysis pipeline v.6.0 (see <http://surfer.nmr.mgh.harvard.edu/>) were used in the anatomical segmentation and cortical thickness calculations¹⁹. For these analyses, we calculated cortical

thickness (adjusted for surface area) from a temporal meta-region of interest, consisting of bilateral entorhinal, fusiform, inferior temporal and middle temporal cortex, which constitute the typical AD signature regions⁴⁴. A β imaging was performed at baseline visit using [¹⁸F]flutemetamol PET⁶. Standardized uptake value ratio images were created using dynamic (list-mode) 90–100-min postinjection data and the whole cerebellum as reference region. Centiloids were derived using the Computational Analysis of PET from AIBL pipeline⁴⁵. In WRAP, participants underwent T1-weighted MRI and amyloid [¹¹C]-Pittsburgh Compound B (PiB) imaging^{46–48}. Cortical thickness in the typical AD signature regions was determined using the same approach as in the BioFINDER-1 cohort. We included MRI scans performed within 2 years of any blood collection visit. A β burden was assessed as a global cortical average [¹¹C]-PiB distribution volume ratios (DVR) and a threshold of DVR > 1.19 across eight bilateral regions of interest was used to define PiB positivity⁴⁸.

Statistical analyses

Baseline levels and longitudinal changes in standardized plasma biomarkers (z scores) were tested in linear mixed effects models with the interaction between time and A β status as well as baseline A β status as independent variables adjusted for age and sex (using the *R* *lme4* package). All biomarkers were standardized based on the corresponding mean and SD within analyzed groups. To study associations of longitudinal changes in plasma biomarkers with longitudinal cognition (for example, with MMSE, mPACC and Word list memory delayed recall (from ADAS-cog in BioFINDER-1 and Rey Auditory Verbal Learning Test in WRAP)) and cortical thickness of the typical AD signature regions, we used linear mixed effects models with the interaction between time and standardized plasma biomarker slopes (derived from subject-level linear regression models, with time as predictor of biomarker levels) as the independent variable, adjusted for age and sex. For cognition we also included years of education as a covariate. To facilitate biomarker comparisons, we used the inverse ratio of A β 42 and A β 40 in the longitudinal analysis. In cohort 1, study participants were classified as amyloid-negative using centiloid threshold of 12 (median (MD) –2.6; *n* = 139; reference group), which was chosen based on previous comparisons to both CSF A β 42 and neuropathology^{49–51}. Centiloids <12 are regarded as normal and represent signal noise. Individuals with centiloids >12 were further classified into the centiloid quartile groups Q1 (range 12.0–35.9; MD 17.9; *n* = 27), Q2 (range 35.9–71.7; MD 50.1; *n* = 24), Q3 (range 71.7–95.3; MD 80.6; *n* = 25) and Q4 (>95.3; MD 114.1; *n* = 25). In addition, participants in cohort 1 were classified into CSF A β 42/40 quintile groups, Q1 (>0.102; MD 0.108; *n* = 115, reference group), Q2 (range 0.089–0.102; MD 0.097; *n* = 115), Q3 (range 0.064–0.089; MD 0.079; *n* = 115), Q4 (range 0.042–0.064; MD 0.051; *n* = 115) and Q5 (range <0.042; MD 0.035; *n* = 115). Plasma biomarker levels (log₁₀-transformed) were compared between the centiloid groups (<12, Q1, Q2, Q3 and Q4) and CSF A β 42/40 quintile groups (Q1, Q2, Q3, Q4 and Q5) using univariate general linear models adjusting for age (with centiloid <12 and CSF A β 42/40 Q1 as reference groups). AUC of two ROC curves were compared with the DeLong test. *P* values adjusted for multiple comparisons using false discovery rate (FDR) were considered significant at *P* < 0.05, two-tailed. FDR correction was applied separately for each outcome measure with the numbers of comparisons shown in table footnotes. Statistical analyses were done in R (v.4.0.2) and SPSS (v.28).

Reporting summary

Further information on research design is available in the Nature Portfolio Reporting Summary linked to this article.

Data availability

Anonymized aggregated level data will be shared by request from a qualified academic investigator for the sole purpose of replicating

procedures and results presented in the article, and as long as data transfer is in agreement with EU legislation on the general data protection regulation and decisions by the Ethical Review Board of Sweden and Region Skåne, which should be regulated in a material transfer agreement.

References

37. Mattsson, N. et al. Increased amyloidogenic APP processing in APOE varepsilon4-negative individuals with cerebral beta-amyloidosis. *Nat. Commun.* **7**, 10918 (2016).
38. Ossenkopppele, R. et al. Discriminative accuracy of [¹⁸F] flortaucipir positron emission tomography for Alzheimer disease vs other neurodegenerative disorders. *JAMA* **320**, 1151–1162 (2018).
39. Donohue, M. C. et al. The preclinical Alzheimer cognitive composite: measuring amyloid-related decline. *JAMA Neurol.* **71**, 961–970 (2014).
40. Papp, K. V., Rentz, D. M., Orlovsky, I., Sperling, R. A. & Mormino, E. C. Optimizing the preclinical Alzheimer's cognitive composite with semantic processing: the PACC5. *Alzheimers Dement. (N. Y.)* **3**, 668–677 (2017).
41. Insel, P. S. et al. Determining clinically meaningful decline in preclinical Alzheimer disease. *Neurology* **93**, e322–e333 (2019).
42. Johnson, S. C. et al. The Wisconsin Registry for Alzheimer's Prevention: a review of findings and current directions. *Alzheimers Dement. (Amst.)* **10**, 130–142 (2018).
43. Jonaitis, E. M. et al. Measuring longitudinal cognition: individual tests versus composites. *Alzheimers Dement. (Amst.)* **11**, 74–84 (2019).
44. Jack, C. R. Jr. et al. Defining imaging biomarker cut points for brain aging and Alzheimer's disease. *Alzheimers Dement.* **13**, 205–216 (2017).
45. Bourgeat, P. et al. Implementing the centiloid transformation for (11)C-PiB and beta-amyloid (18)F-PET tracers using CapAIBL. *Neuroimage* **183**, 387–393 (2018).
46. Johnson, S. C. et al. Amyloid burden and neural function in people at risk for Alzheimer's Disease. *Neurobiol. Aging* **35**, 576–584 (2014).
47. Betthausen, T. J. et al. Amyloid and tau imaging biomarkers explain cognitive decline from late middle-age. *Brain* **143**, 320–335 (2020).
48. Racine, A. M. et al. Cerebrospinal fluid ratios with Abeta42 predict preclinical brain beta-amyloid accumulation. *Alzheimers Dement. (Amst.)* **2**, 27–38 (2016).
49. Papp K. V. et al. Association of emerging beta-amyloid and tau pathology with early cognitive changes in clinically normal older adults. *Neurology* **98**, e1512–e1524 (2022).
50. Salvado, G. et al. Centiloid cut-off values for optimal agreement between PET and CSF core AD biomarkers. *Alzheimers Res. Ther.* **11**, 27 (2019).
51. La Joie, R. et al. Multisite study of the relationships between antemortem [(11)C]PiB-PET Centiloid values and postmortem measures of Alzheimer's disease neuropathology. *Alzheimers Dement.* **15**, 205–216 (2019).

Acknowledgements

This work was supported by the European Union's Horizon 2020 research and innovation program (Marie Skłodowska-Curie grant agreement No. 860197 (MIRIADE) to E.V.M. and H.Z.), the Swedish Research Council (grant Nos. 2018-02052 to S.P., 2018-02532 to H.Z. (Wallenberg Scholar) and 2017-00915 to K.B.), Alzheimer foundation (grant No. AF-940046 to S.P.), Brain foundation (grant No. FO2020-0271 to S.P.), the European Research Council (grant No. 681712 to H.Z.), Swedish State Support for Clinical Research (grant No. ALFGBG-720931 to H.Z.), the Alzheimer Drug Discovery Foundation

(ADDF to H.Z. and K.B.), USA (grant Nos. 201809-2016862 to H.Z., and RDAPB-201809-2016615 and 1R01AG068398-01 to K.B.), the AD Strategic Fund and the Alzheimer's Association (grant Nos. ADSF-21-831376-C, ADSF-21-831381-C and ADSF-21-831377-C to H.Z., and 2021 Zenith Award ZEN-21-848495 to K.B.), the Olav Thon Foundation (to H.Z.), the Erling-Persson Family Foundation (to H.Z.), Stiftelsen för Gamla Tjänarinnor (to H.Z.), Hjärnfonden, Sweden (grant Nos. FO2019-0228 to H.Z., and FO2017-0243 and ALZ2022-0006 to K.B.), the UK Dementia Research Institute at UCL (to H.Z.), the Swedish Alzheimer Foundation (grant Nos. AF-930351, AF-939721 and AF-968270 to K.B.), the Swedish state under the agreement between the Swedish government and the County Councils (to K.B.), the ALF-agreement (grant Nos. ALFGBG-715986 and ALFGBG-965240 to K.B.), the European Union Joint Program for Neurodegenerative Disorders (grant No. JPN2019-466-236 to K.B.) and the National Institutes of Health (NIH to K.B.). Work at Lund University was supported by the Swedish Research Council (grant Nos. 2016-00906 and 2021-02219), the Knut and Alice Wallenberg foundation (grant No. 2017-0383, and WCMM grant 2019), The Medical Faculty at Lund University (WCMM grant 2019), Region Skåne (WCMM grant 2019), the Marianne and Marcus Wallenberg foundation (grant No. 2015.0125), the Strategic Research Area MultiPark (Multidisciplinary Research in Parkinson's disease) at Lund University, the Swedish Alzheimer Foundation (grant Nos. AF-939932, AF-930655 and AF-968453), the Swedish Brain Foundation (grant Nos. FO2021-0293, FO2019-0029 and FO2020-0275), The Parkinson foundation of Sweden (grant No. 1280/20), the Konung Gustaf V:s och Drottning Victorias Frimurarestiftelse, the Skåne University Hospital Foundation (grant No. 2020-0000028), Regionalt Forskningsstöd (grant No. 2020-0314), The Bundy Academy, Stiftelsen Gamla Tjänarinnor (grant No. 2019-00845) and the Swedish federal government under the ALF-agreement (grant Nos. 2018-Projekt0279 and 2018-Projekt0054). The data and samples contributed from the Wisconsin Registry for Alzheimer's Prevention were supported with grants from the US National Institutes of Health (grant Nos. AG027161 and AG021155).

Author contributions

N.J.A., S.J., N.M.-C., K.B. and O.H. designed the study. N.J.A., S.J., W.S.B., T.K.K., F.G.-O., G.D.M., R.J.B., H.Z. and K.B. acquired the blood biomarker data. S.P. and E.S. acquired clinical data for the study. Data analysis was performed by S.J. and N.M.-C. N.J.A., S.J., N.M.-C. and O.H. wrote the initial draft of the manuscript. All authors contributed towards subsequent manuscript drafts.

Funding

Open access funding provided by Lund University.

Competing interests

N.J.A. has given lectures in symposia sponsored by Eli Lilly. S.J. has no disclosures. N.M.-C. has no disclosures. A.P.B. has no disclosures. O.S. has no disclosures. W.S.B. has no disclosures. T.K.K. has no disclosures. F.G.-O. has no disclosures. G.D.M. has no disclosures. F.J.M. has no disclosures. E.M.J. has no disclosures. R.L.K. has no disclosures. K.C. has no disclosures. T.J.B. has no disclosures. Y.L. has no disclosures. E.V. is a cofounder of ADx Neurosciences. S.P. has served on scientific advisory boards and/or given lectures in symposia sponsored by Biogen, Eli Lilly, Geras Solutions and Roche. E.S. has no disclosures. R.J.B. has equity ownership interest in C2N Diagnostics and may receive income based on technology licensed or optioned by Washington University to C2N Diagnostics, receives income from C2N Diagnostics for serving on the scientific advisory board and has received honoraria as a speaker/consultant/advisory board member from Amgen, Eisai and Roche. H.Z. has served at scientific advisory boards and/or as a consultant for Abbvie, Alector, Eisai, Denali, Roche Diagnostics, Wave, Samumed, Siemens Healthineers, Pinteon Therapeutics, Nervgen, AZTherapies, CogRx and Red Abbey Labs,

has given lectures in symposia sponsored by Celectricon, Fujirebio, Alzecure and Biogen, and is a cofounder of Brain Biomarker Solutions in Gothenburg AB (BBS), which is a part of the GU Ventures Incubator Program (outside submitted work). S.C.J. has within the past 3 years served at scientific advisory boards and/or as a consultant for Roche Diagnostics, Prothena and Eisai and has received research support from Cerveau Technologies. K.B. has served as a consultant, at advisory boards, or at data monitoring committees for Abcam, Axon, BioArctic, Biogen, JOMDD/Shimadzu, Julius Clinical, Lilly, MagQu, Novartis, Ono Pharma, Pharmatrophix, Prothena, Roche Diagnostics and Siemens Healthineers, and is a cofounder of Brain Biomarker Solutions in Gothenburg AB (BBS), which is a part of the GU Ventures Incubator Program, outside the work presented in this paper. O.H. has acquired research support (for the institution) from ADx, AVID Radiopharmaceuticals, Biogen, Eli Lilly, Eisai, Fujirebio, GE Healthcare, Pfizer and Roche. In the past 2 years, he has received consultancy/speaker fees from Amylyx, Alzpath, BioArctic, Biogen, Cerveau, Fujirebio, Genentech, Novartis, Roche and Siemens.

Additional information

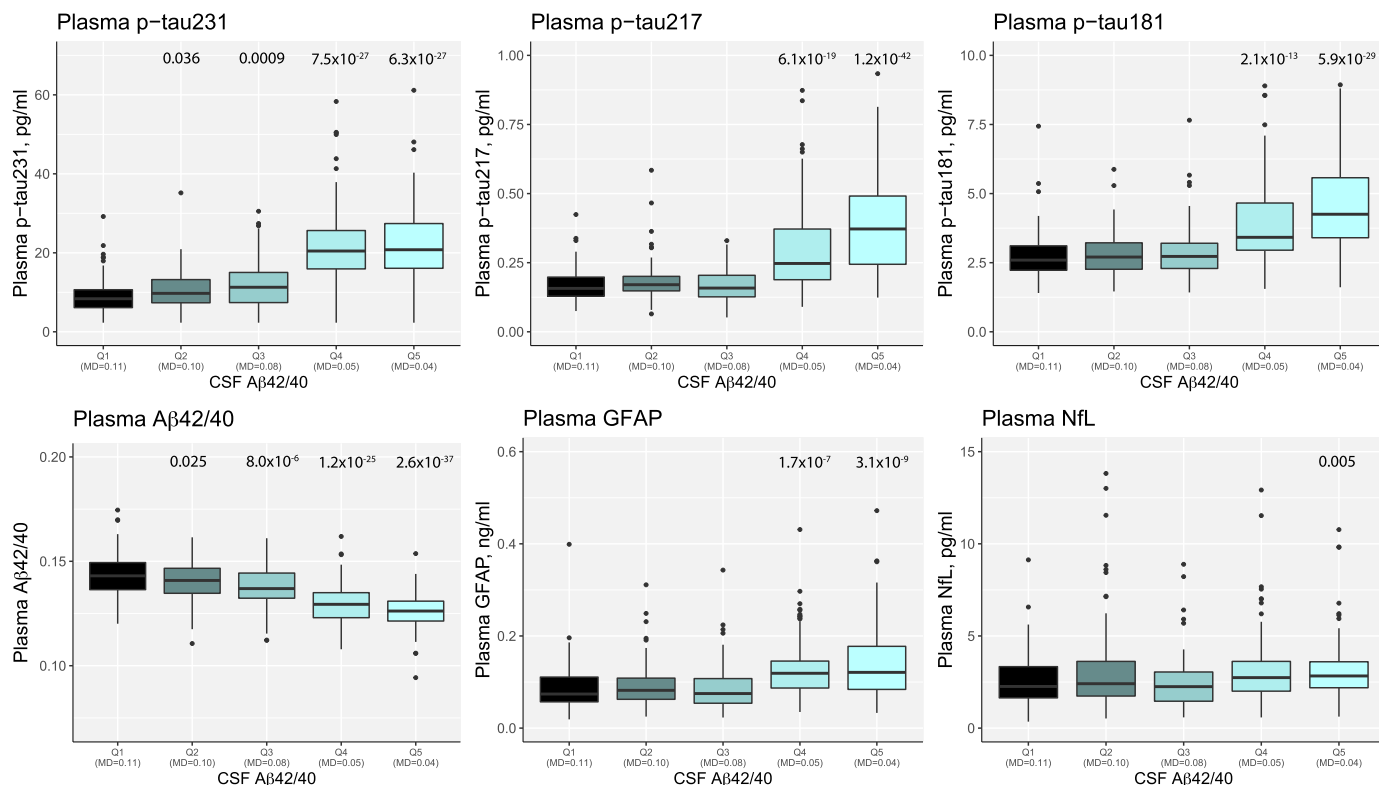
Extended data is available for this paper at <https://doi.org/10.1038/s41591-022-02074-w>.

Supplementary information The online version contains supplementary material available at <https://doi.org/10.1038/s41591-022-02074-w>.

Correspondence and requests for materials should be addressed to Kaj Blennow or Oskar Hansson.

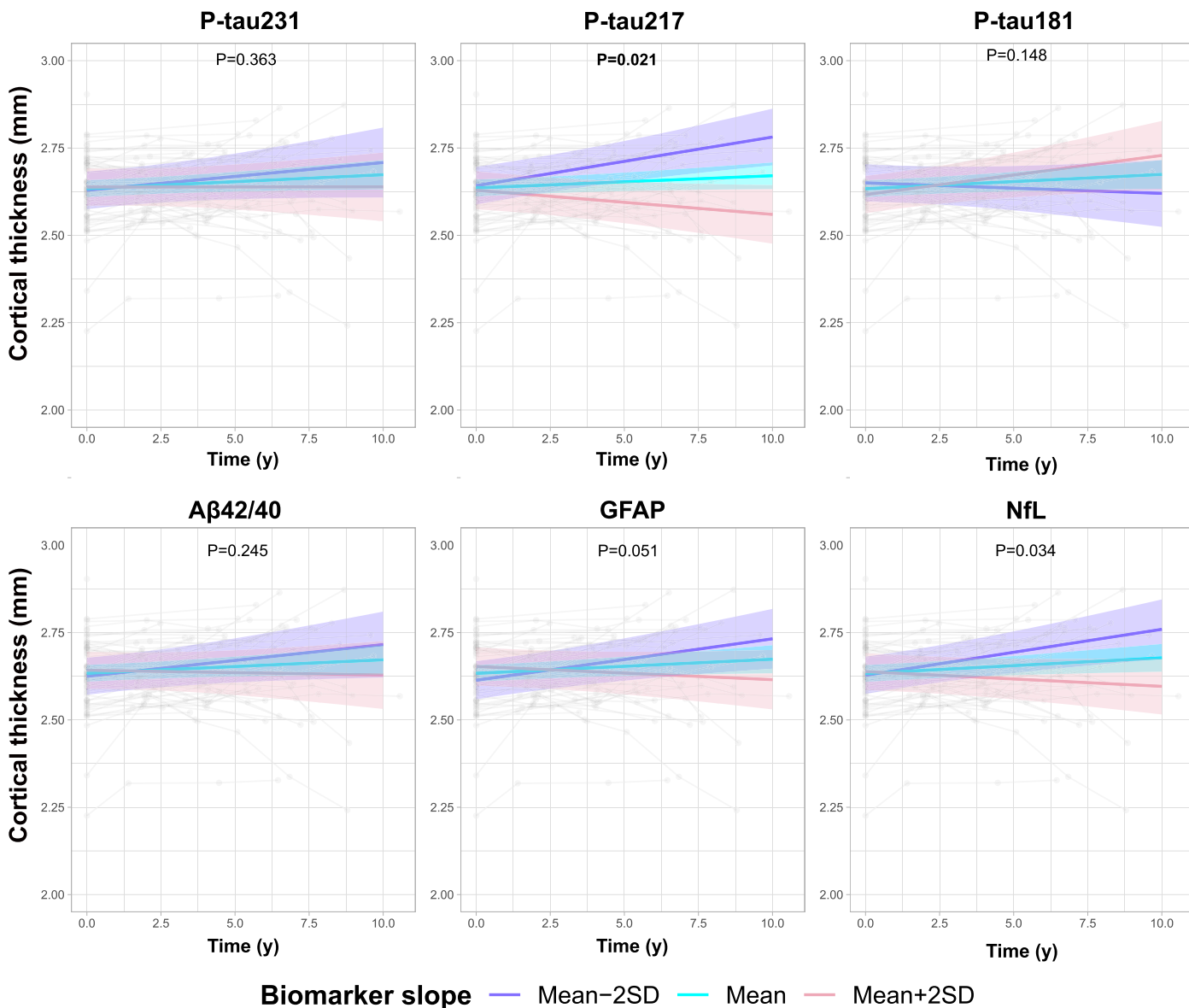
Peer review information *Nature Medicine* thanks Ronald Petersen and the other, anonymous, reviewer(s) for their contribution to the peer review of this work. Primary Handling Editor: Jerome Staal, in collaboration with the *Nature Medicine* team.

Reprints and permissions information is available at www.nature.com/reprints.



Extended Data Fig. 1 | Associations between plasma biomarkers and CSF Aβ42/40 in BioFINDER-1 (cohort 1). Log10-transformed plasma biomarker levels were compared between the CSF Aβ42/40 quintile groups, Q1 (> 0.102; median [MD], 0.108; n = 115, reference group), Q2 (range, 0.089-0.102; MD, 0.097; n = 115), Q3 (range 0.064-0.089; MD, 0.079; n = 115), Q4 (range, 0.042-0.064; MD, 0.051; n = 115) and Q5 (range, <0.042; MD, 0.035; n = 115) using univariate general linear models adjusting for age. Untransformed data are presented in the

boxplots to aid interpretation of biomarker values across different comparisons. Outliers (p-tau217, n = 1; p-tau181, n = 2; GFAP, n = 1; NfL, n = 2) are not shown in the boxplots but were included in the statistical analysis. Boxes show interquartile range, the horizontal lines are medians, and the whiskers were plotted using Tukey method. Two-sided p-values were corrected for multiple comparisons using Benjamini-Hochberg false discovery rate; uncorrected and corrected p-values are shown in Extended Data Table 6.



Extended Data Fig. 2 | Associations between longitudinal plasma biomarkers and brain atrophy in WRAP (cohort 3). The association between longitudinal plasma biomarkers and cortical thickness of the typical AD signature regions in A β positive cognitively unimpaired participants. The x-axis show time from first plasma biomarker samples. The model trajectories, shown as the mean slope and the mean \pm 2 SD with 95% CI (shaded area), were plotted from linear mixed effects

models with the interaction between time and standardized plasma biomarker slopes (derived from subject-level linear regression models) as the independent variable adjusting for age and sex. Two-sided p-values were corrected for multiple comparisons using Benjamini–Hochberg false discovery rate; corrected and uncorrected p-values are shown in Table 2 and Supplementary Table 2.

Extended Data Table 1 | Demographics of cohort 1 (BioFINDER-1 cross-sectional sub-cohort)

	Cognitively unimpaired (CU)			Mild cognitively impaired (MCI)		
	All	A β -	A β +	All	A β -	A β +
N	388	276	112	187	68	119
Age, y, mean (SD)	72.2 (5.5)	71.9 (5.6)	73.1 (5.4)	71.6 (5.4)	69.5 (5.6)	72.8 (4.9)
Sex, M/F	155/233	109/167	46/66	101/86	42/26	59/60
Education, y, mean (SD)	12.3 (3.7)	12.4 (3.6)	12.2 (4.1)	11.0 (3.4)	10.9 (3.6)	11.1 (3.3)
<i>APOE</i> ϵ 4, N (%)	117 (30.2)	51 (18.5)	66 (58.9)	98 (52.4)	13 (19.1)	85 (71.4)
MMSE	28.8 (1.2)	28.9 (1.2)	28.6 (1.3)	26.9 (1.8)	27.5 (1.9)	26.5 (1.7)
Word list delayed recall ^a	2.6 (2.1)	2.3 (1.9)	3.3 (2.4)	6.6 (2.4)	5.8 (2.3)	7.0 (2.3)
mPACC ^b	0.013 (0.746)	0.108 (0.701)	-0.232 (0.805)	-1.38 (0.773)	-1.06 (0.786)	-1.61 (0.675)
Plasma creatinine, μ mol/l ^c	77.1 (19.0)	76.4 (17.4)	78.8 (22.5)	78.5 (19.1)	81.2 (20.1)	77.0 (18.5)
Elevated plasma creatinine, N (%) ^d	33 (8.5)	24 (8.7)	9 (8.0)	13 (7.0)	6 (8.8)	7 (5.9)
Body mass index, kg/m ² ^e	26.1 (4.1)	26.3 (4.1)	25.7 (4.0)	25.6 (4.1)	26.8 (4.3)	24.9 (4.0)
Body mass index, >25 kg/m ² , N (%)	216 (55.7)	161 (58.3)	55 (49.1)	79 (42.2)	39 (57.4)	40 (33.6)
Ischemic heart disease, N (%)	33 (8.5)	19 (6.9)	14 (12.5)	32 (17.1)	16 (23.5)	16 (13.4)
Stroke / Transient ischemic attack, N (%)	17 (4.4)	10 (3.6)	7 (6.3)	31 (16.6)	13 (19.1)	18 (15.1)
Diabetes, N (%)	35 (9.0)	22 (8.0)	13 (11.6)	19 (10.2)	8 (11.8)	11 (9.2)
Hypertension, N (%)	154 (39.7)	110 (39.9)	44 (39.3)	56 (29.2)	20 (29.4)	26 (30.3)
p-tau181, pg/mL	3.2 (1.3)	2.8 (0.9)	4.1 (1.7)	4.0 (2.0)	2.8 (0.9)	4.6 (2.2)
p-tau217, pg/mL	0.204 (0.116)	0.168 (0.054)	0.295 (0.168)	0.326 (0.208)	0.191 (0.085)	0.404 (0.218)
p-tau231, pg/mL	13.3 (8.2)	10.4 (5.3)	20.7 (9.4)	18.4 (10.4)	10.7 (5.2)	22.8 (10.1)
A β 42/40 ratio	0.138 (0.010)	0.141 (0.009)	0.129 (0.008)	0.131 (0.012)	0.139 (0.012)	0.127 (0.010)
GFAP, ng/mL	0.099 (0.062)	0.089 (0.062)	0.123 (0.055)	0.126 (0.076)	0.096 (0.058)	0.143 (0.079)
NfL, pg/mL	2.6 (1.6)	2.5 (1.4)	3.0 (1.9)	3.7 (3.0)	3.9 (3.5)	3.6 (2.7)

Higher scores of MMSE and mPACC, but lower scores for word list delayed recall, mean better performance. ^a Word list memory delayed recall (from ADAS-cog) scores were missing for 2 CU and 11 MCI participants. ^b mPACC scores were missing for 39 CU and 45 MCI participants. ^c Creatinine data were missing for 9 CU and 9 MCI participants. ^d Creatinine levels above 90 μ mol/l in women and above 105 μ mol/l were considered as high. ^e Body mass index data were missing for 15 CU and 26 MCI participants.

Extended Data Table 2 | Demographics of cohort 2 (BioFINDER-1 longitudinal sub-cohort)

	Cognitively unimpaired (CU)			Mild cognitively impaired (MCI)		
	All	A β -	A β +	All	A β -	A β +
N	147	88	59	95	47	48
Age, y, mean (SD)	71.5 (5.1)	70.7 (4.9)	72.8 (5.3)	70.3 (5.5)	69.6 (5.7)	70.9 (5.2)
Sex, M/F	55/92	35/53	20/39	59/36	34/13	25/23
Education, y, mean (SD)	12.1 (3.2)	12.2 (3.0)	12.0 (3.5)	11.7 (3.4)	11.3 (3.3)	12.2 (3.5)
APOE ϵ 4, %	56 (38.1)	21 (23.9)	35 (59.3)	50 (52.6)	13 (27.7)	37 (77.1)
No. of plasma at timepoint (0y/2y/4y/6y)	147/104/129/74			95/59/55/15		
MMSE at baseline ^a	28.9 (1.3)	29.0 (1.3)	28.8 (1.2)	27.4 (1.8)	27.6 (1.9)	27.1 (1.7)
Word list delayed recall ^a	2.4 (2.1)	2.1 (1.8)	3.0 (2.4)	6.6 (2.1)	5.8 (2.2)	7.3 (1.8)
mPACC at baseline ^b	0.045 (0.742)	0.218 (0.633)	-0.197 (0.818)	-1.32 (0.669)	-1.13 (0.666)	-1.5 (0.622)
Temporal cortical thickness at baseline (mm) ^c	2.7 (0.228)	2.7 (0.217)	2.6 (0.232)	2.5 (0.221)	2.6 (0.260)	2.5 (0.174)
Plasma creatinine, μ mol/l ^d	75.2 (14.7)	74.5 (11.7)	76.2 (18.3)	79.5 (20.7)	80.2 (19.2)	78.9 (22.4)
Elevated plasma creatinine, N (%) ^e	9 (6.1)	2 (2.3)	7 (11.9)	5 (5.3)	2 (4.3)	3 (6.3)
Body mass index, kg/m ² ^f	25.5 (3.3)	25.6 (3.2)	25.3 (3.4)	25.4 (4.1)	25.9 (4.2)	24.9 (4.0)
Body mass index, >25 kg/m ² , N (%)	72 (49.0)	47 (53.4)	25 (42.4)	36 (37.9)	22 (46.8)	14 (29.2)
Ischemic heart disease, N (%)	14 (9.5)	7 (8.0)	7 (11.9)	9 (9.5)	8 (17.0)	1 (2.1)
Stroke / Transient ischemic attack, N (%)	8 (5.4)	4 (4.5)	4 (6.8)	9 (9.5)	6 (12.8)	3 (6.3)
Diabetes, N (%)	14 (9.5)	7 (8.0)	7 (11.9)	8 (8.4)	6 (12.8)	2 (4.2)
Hypertension, N (%)	60 (40.8)	34 (38.6)	26 (44.1)	28 (29.5)	16 (34.0)	12 (25.0)

Higher scores of MMSE and mPACC, but lower scores for word list delayed recall, mean better performance. ^a Baseline MMSE and ADAS-cog scores were missing for 1 CU and 2 MCI participants. ^b Baseline mPACC scores were missing for 17 CU and 16 MCI participants. ^c Baseline cortical thickness data were missing for 19 CU and 9 MCI participants. ^d Creatinine data were missing for 3 CU and 9 MCI MCI participants. ^e Creatinine levels above 90 μ mol/l in women and above 105 μ mol/l were considered as high. ^f Body mass index data were missing for 2 CU and 13 MCI participants.

Extended Data Table 3 | Comparison of cohort 1 (BioFINDER-1 cross-sectional sub-cohort) and cohort 2 (BioFINDER-1 longitudinal sub-cohort)

	Cognitively unimpaired (CU)			Mild cognitively impaired (MCI)		
	Cohort 1	Cohort 2	P-value corrected (uncorrected)	Cohort 1	Cohort 2	P-value corrected (uncorrected)
N	388	147	NA	187	95	NA
Age, y, mean (SD)	72.2 (5.5)	71.5 (5.1)	0.64 (0.24)	71.6 (5.4)	70.3 (5.5)	0.41 (0.041)
Sex, M/F	155/233	55/92	0.93 (0.59)	101/86	59/36	0.59 (0.20)
Education, y, mean (SD)	12.3 (3.7)	12.1 (3.2)	0.93 (0.87)	11.0 (3.4)	11.7 (3.4)	0.41 (0.08)
APOE ε4, %	30.2	38.1	0.41 (0.09)	52.4	52.6	0.97 (0.97)
MMSE ^a	28.8 (1.20)	28.9 (1.3)	0.41 (0.12)	26.9 (1.8)	27.4 (1.8)	0.41 (0.07)
Word list delayed recall ^b	2.6 (2.1)	2.4 (2.1)	0.87 (0.41)	6.6 (2.4)	2.4 (2.1)	0.93 (0.83)
mPACC ^c	0.013 (0.746)	0.045 (0.742)	0.93 (0.61)	-1.4 (0.773)	-1.3 (0.669)	0.87 (0.41)
Plasma Creatinine, μmol/l ^d	77.1 (19.0)	75.2 (14.7)	0.93 (0.66)	78.5 (19.1)	79.5 (20.7)	0.93 (0.78)
Elevated plasma Creatinine, N (%) ^e	33 (8.5)	9 (6.1)	0.87 (0.37)	13 (7.0)	5 (5.3)	0.93 (0.65)
Body mass index, kg/m ² ^f	26.1 (4.1)	25.5 (3.3)	0.41 (0.11)	26.1 (4.1)	25.4 (4.1)	0.93 (0.76)
Body mass index, >25 kg/m ² , N (%)	216 (55.7)	72 (49.0)	0.41 (0.09)	79 (42.2)	36 (37.9)	0.89 (0.45)
Ischemic heart disease, N (%)	33 (8.5)	14 (9.5)	0.93 (0.71)	32 (17.1)	9 (9.5)	0.41 (0.09)
Stroke / Transient ischemic attack, N (%)	17 (4.4)	8 (5.4)	0.93 (0.60)	31 (16.6)	9 (9.5)	0.41 (0.11)
Diabetes, N (%)	35 (9.0)	14 (9.5)	0.93 (0.86)	19 (10.2)	8 (8.4)	0.93 (0.64)
Hypertension, N (%)	154 (39.7)	60 (40.8)	0.93 (0.81)	56 (29.9)	28 (29.5)	0.97 (0.94)

Two-sided p-values (when appropriate) are from Mann-Whitney or Chi-Square (sex, APOE ε4 status) tests. P-values were corrected for multiple comparisons (n=30) using Benjamini–Hochberg false discovery rate. Higher scores of MMSE and mPACC, but lower scores for word list delayed recall, mean better performance. ^a MMSE scores were missing for 3 participants from cohort 2. ^b Word list delayed recall (from ADAS-cog) scores were missing for 13 participants from cohort 1 and 3 participants from cohort 2. ^c mPACC scores were missing for 84 participants from cohort 1 and 33 participants from cohort 2. ^d Creatinine data were missing for 18 participants from cohort 1 and 12 participants from cohort 2. ^e Creatinine levels above 90 μmol/l in women and above 105 μmol/l were considered as high. ^f Body mass index data were missing for 41 participants from cohort 1 and 15 participants from cohort 2.

Extended Data Table 4 | Demographics of cohort 3 (WRAP longitudinal cohort)

	Cognitively unimpaired (CU)		
	All	A β -	A β +
N	161	93	68
Age at blood, y, mean (SD)	63.0 (6.2)	61.9 (6.8)	64.4 (5.1)
Sex, M/F	56/105	32/61	24/44
Education, y, mean (SD)	16.4 (2.5)	16.3 (2.6)	16.4 (2.2)
<i>APOE</i> ϵ 4, %	47.8	33.3	67.6
MMSE at first plasma	29.4 (0.9)	29.4 (1.0)	29.4 (0.9)
Word list delayed recall at first plasma ^a	10.6 (2.5)	10.6 (2.5)	10.7 (2.5)
mPACC at first plasma ^b	0.006 (0.571)	0.058 (0.563)	-0.064 (0.579)
Temporal cortical thickness at first MRI (mm) ^c	2.6 (0.097)	2.65 (0.090)	2.63 (0.106)
No. of plasma at visits (1/2/3/4/5/6)	161/155/137/48/1		
Kidney disease, N (%)	2 (1.2)	0 (0.0)	2 (2.9)
Body mass index, kg/m ²	27.7 (5.1)	27.9 (5.2)	27.5 (4.9)
Body mass index, >25 kg/m ² , N (%)	113 (70.2)	65 (69.9)	48 (70.6)
Heart disease, N (%)	3 (1.9)	3 (3.2)	0 (0.0)
Stroke / Transient ischemic attack, N (%)	4 (2.5)	2 (2.2)	2 (2.9)
Diabetes, N (%)	1 (0.6)	1 (1.1)	0 (0.0)
Hypertension, N (%)	30 (18.6)	16 (17.2)	14 (20.6)

^a Word list delayed recall from RAVLT.

^b mPACC score was missing for 1 participant.

^c Cortical thickness data were missing for 3 participants

Extended Data Table 5 | Discrimination of A β positive vs negative participants in BioFINDER-1 (cohort 1)

Plasma biomarkers	AUC (95% CI)	p-value corrected (uncorrected)	AIC
Cognitively unimpaired N, 112/276 (Aβ+/Aβ-)			
p-tau231	0.854 (0.806-0.902)	NA	329.6
A β 42/40	0.847 (0.806-0.889)	0.91 (0.82)	342.2
p-tau217	0.783 (0.728-0.837)	0.043 (0.026)	360.3
p-tau181	0.775 (0.725-0.825)	0.041 (0.021)	395.1
GFAP	0.714 (0.655-0.772)	0.0009 (0.0003)	444.3
NfL	0.591 (0.528-0.653)	9.3x10 ⁻¹¹ (1.9x10 ⁻¹¹)	463.5
Mild cognitive impairment N, 119/68 (Aβ+/Aβ-)			
p-tau231	0.882 (0.831-0.934)	NA	163.1
p-tau217	0.879 (0.828-0.930)	0.92 (0.92)	164.4
p-tau181	0.828 (0.769-0.888)	0.21 (0.17)	186.7
A β 42/40	0.792 (0.721-0.863)	0.053 (0.037)	199.8
GFAP	0.707 (0.629-0.784)	0.0003 (0.0001)	229.0
NfL	0.513 (0.419-0.606)	6.5x10 ⁻¹² (6.5x10 ⁻¹³)	248.7

AUC of two ROC curves were compared with DeLong test. Two-sided p-values were adjusted for multiple comparisons (n=10) using Benjamini-Hochberg false discovery rate. A β status was defined based on CSF A β 42/40 binarized using a threshold of 0.066 determined using mixture modelling.

Extended Data Table 6 | P-values for biomarkers comparisons in Fig. 1 and Extended Data Fig. 1

	p-tau231	p-tau217	P-tau181	Aβ42/40	GFAP	NfL
PET CL groups						
Q0 (CL <12) ^a	NA	NA	NA	NA	NA	NA
Q1 (CL 12.0-35.9)	8.0x10 ⁻⁶ (6.0x10 ⁻⁶)	0.296 (0.296)	0.354 (0.354)	0.045 (0.045)	0.550 (0.550)	0.906 (0.906)
Q2 (CL 35.9-71.7)	4.0x10 ⁻⁶ (2.0x10 ⁻⁶)	2.6x10 ⁻⁷ (2.0x10 ⁻⁷)	9.3x10 ⁻⁶ (7.0x10 ⁻⁶)	1.0x10 ⁻⁸ (7.8x10 ⁻⁹)	0.003 (0.002)	0.721 (0.541)
Q3 (CL 71.7-95.3)	2.3x10 ⁻⁵ (2.3x10 ⁻⁵)	7.1x10 ⁻¹⁵ (3.5x10 ⁻¹⁵)	1.5x10 ⁻¹¹ (7.4x10 ⁻¹²)	1.3x10 ⁻⁹ (3.2x10 ⁻¹⁰)	3.0x10 ⁻⁷ (7.3x10 ⁻⁸)	0.140 (0.051)
Q4 (CL >95.3)	3.8x10 ⁻⁶ (9.5x10 ⁻⁷)	2.4x10 ⁻²⁰ (5.9x10 ⁻²¹)	1.9x10 ⁻¹³ (4.9x10 ⁻¹⁴)	1.5x10 ⁻⁹ (7.3x10 ⁻¹⁰)	8.0x10 ⁻⁶ (4.0x10 ⁻⁶)	0.140 (0.070)
CSF Aβ42/40 groups						
Q1 (>0.10) ^a	NA	NA	NA	NA	NA	NA
Q2 (0.089-0.10)	0.036 (0.036)	0.227 (0.171)	0.405 (0.405)	0.025 (0.025)	0.700 (0.525)	0.114 (0.085)
Q3 (0.064-0.089)	0.0009 (0.0006)	0.954 (0.954)	0.249 (0.187)	8.0x10 ⁻⁶ (6.0x10 ⁻⁶)	0.903 (0.903)	0.909 (0.909)
Q4 (0.042-0.064)	7.5x10 ⁻²⁷ (3.8x10 ⁻²⁷)	6.1x10 ⁻¹⁹ (3.0x10 ⁻¹⁹)	2.1x10 ⁻¹³ (1.1x10 ⁻¹³)	1.2x10 ⁻²⁵ (6.0x10 ⁻²⁶)	1.7x10 ⁻⁷ (8.7x10 ⁻⁸)	0.114 (0.063)
Q5 (<0.042)	6.3x10 ⁻²⁷ (1.6x10 ⁻²⁷)	1.2x10 ⁻⁴² (2.9x10 ⁻⁴³)	5.9x10 ⁻²⁹ (1.5x10 ⁻²⁹)	2.6x10 ⁻³⁷ (6.6x10 ⁻³⁸)	3.1x10 ⁻⁹ (7.7x10 ⁻¹⁰)	0.005 (0.001)

Data are corrected (uncorrected) two-sided p-values; p-values were corrected for multiple comparisons (n=4) using Benjamini-Hochberg false discovery rate. ^a Reference group.

Extended Data Table 7 | Longitudinal changes in plasma p-tau217 concentration over time by A β status in BioFINDER-1 (cohort 2)

	β -estimate	p-value corrected (uncorrected)
Cognitively unimpaired		
A β +	0.217	8.0x10 ⁻¹⁶ (2.0x10 ⁻¹⁶)
A β -	-0.033	0.086 (0.064)
Mild cognitive impairment		
A β +	0.256	0.0002 (0.0004)
A β -	-0.015	0.785 (0.785)

β -estimates and two-sided p-values are from linear mixed effects models with time as the independent variable, adjusted for age and sex. P-values were adjusted for multiple (n=4) comparisons using Benjamini-Hochberg false discovery rate.

Extended Data Table 8 | Associations between longitudinal plasma biomarkers and longitudinal Word list delayed recall and Rey Auditory Verbal Learning Test in A β positive cognitively unimpaired participants in BioFINDER-1 (cohort 2) and WRAP (cohort 3), respectively

Plasma biomarkers	BioFINDER-1 – Word list delayed recall ^a		WRAP – Word list delayed recall (RAVLT) ^b	
	β -estimate	p-value corrected (uncorrected)	β -estimate	p-value corrected (uncorrected)
p-tau231	0.006	0.867 (0.836)	-0.130	0.114 (0.071)
p-tau217	0.090	0.032 (0.005)	-0.298	8.3x10 ⁻⁶ (1.4x10 ⁻⁶)
p-tau181	0.011	0.867 (0.723)	-0.119	0.114 (0.095)
A β 42/40	0.014	0.867 (0.700)	-0.069	0.337 (0.337)
GFAP	-0.006	0.867 (0.867)	-0.124	0.114 (0.074)
NfL	0.054	0.474 (0.158)	-0.115	0.114 (0.088)

β -estimates and two-sided p-values are from linear mixed effects models with the interaction between time and standardized plasma biomarker slopes (derived from subject-level linear regression models) as the independent variable, adjusted for age, sex and years of education. P-values were adjusted for multiple comparisons (n=6) using Benjamini–Hochberg false discovery rate. ^a Longitudinal Word list delayed recall and plasma biomarker data were available for 57 (p-tau) and 49 (A β 42/40, GFAP and NfL) A β positive cognitively unimpaired participants in BioFINDER-1. ^b Longitudinal RAVLT and plasma biomarker data were available for 66 (p-tau217) and 65 (other biomarkers) A β positive cognitively unimpaired participants in WRAP.

Reporting Summary

Nature Portfolio wishes to improve the reproducibility of the work that we publish. This form provides structure for consistency and transparency in reporting. For further information on Nature Portfolio policies, see our [Editorial Policies](#) and the [Editorial Policy Checklist](#).

Statistics

For all statistical analyses, confirm that the following items are present in the figure legend, table legend, main text, or Methods section.

- | | | |
|-------------------------------------|-------------------------------------|--|
| n/a | <input checked="" type="checkbox"/> | Confirmed |
| <input type="checkbox"/> | <input checked="" type="checkbox"/> | The exact sample size (n) for each experimental group/condition, given as a discrete number and unit of measurement |
| <input type="checkbox"/> | <input checked="" type="checkbox"/> | A statement on whether measurements were taken from distinct samples or whether the same sample was measured repeatedly |
| <input type="checkbox"/> | <input checked="" type="checkbox"/> | The statistical test(s) used AND whether they are one- or two-sided
<i>Only common tests should be described solely by name; describe more complex techniques in the Methods section.</i> |
| <input type="checkbox"/> | <input checked="" type="checkbox"/> | A description of all covariates tested |
| <input type="checkbox"/> | <input checked="" type="checkbox"/> | A description of any assumptions or corrections, such as tests of normality and adjustment for multiple comparisons |
| <input type="checkbox"/> | <input checked="" type="checkbox"/> | A full description of the statistical parameters including central tendency (e.g. means) or other basic estimates (e.g. regression coefficient) AND variation (e.g. standard deviation) or associated estimates of uncertainty (e.g. confidence intervals) |
| <input type="checkbox"/> | <input checked="" type="checkbox"/> | For null hypothesis testing, the test statistic (e.g. F , t , r) with confidence intervals, effect sizes, degrees of freedom and P value noted
<i>Give P values as exact values whenever suitable.</i> |
| <input checked="" type="checkbox"/> | <input type="checkbox"/> | For Bayesian analysis, information on the choice of priors and Markov chain Monte Carlo settings |
| <input checked="" type="checkbox"/> | <input type="checkbox"/> | For hierarchical and complex designs, identification of the appropriate level for tests and full reporting of outcomes |
| <input checked="" type="checkbox"/> | <input type="checkbox"/> | Estimates of effect sizes (e.g. Cohen's d , Pearson's r), indicating how they were calculated |

Our web collection on [statistics for biologists](#) contains articles on many of the points above.

Software and code

Policy information about [availability of computer code](#)

Data collection

Data analysis http://surfer.nmr.mgh.harvard.edu/)"/>

For manuscripts utilizing custom algorithms or software that are central to the research but not yet described in published literature, software must be made available to editors and reviewers. We strongly encourage code deposition in a community repository (e.g. GitHub). See the Nature Portfolio [guidelines for submitting code & software](#) for further information.

Data

Policy information about [availability of data](#)

All manuscripts must include a [data availability statement](#). This statement should provide the following information, where applicable:

- Accession codes, unique identifiers, or web links for publicly available datasets
- A description of any restrictions on data availability
- For clinical datasets or third party data, please ensure that the statement adheres to our [policy](#)

Anonymized aggregated level data will be shared by request from a qualified academic investigator for the sole purpose of replicating procedures and results presented in the article, and as long as data transfer is in agreement with EU legislation on the general data protection regulation and decisions by the Ethical Review Board of Sweden and Region Skåne, which should be regulated in a material transfer agreement.

Human research participants

Policy information about [studies involving human research participants and Sex and Gender in Research](#).

Reporting on sex and gender	We used term "sex" throughout the manuscript. Sex was determined based on self-reporting. Statistical analysis included sex as a covariate; the study included 2 independent cohorts altogether comprised of balanced numbers of man (n=503) and women (n=475); therefore, we believe the findings apply to both sexes.
Population characteristics	Detailed information is given in e-table 1, e-table 2, e-table 4 and eMethods. In short, we present results for analyses from three different cohorts. Cohort 1 and 2 arise both from BioFINDER-1. Cohort 1 and cohort 2 had similar demographic characteristics. Cohort 1 was a cross-sectional analysis and cohort 2+3 included longitudinal plasma samples, imaging, and clinical data. Cohort 1 included 388 cognitively unimpaired participants, 187 mild cognitive impairment (MCI) due to AD. Cohort 2 included a longitudinal analysis of 147 cognitively unimpaired (CU) participants and 95 MCI patients. Cohort 3 included 161 cognitively unimpaired participants. All cohorts include the same, clinical, imaging and plasma biomarker information. Cohort 1 also included CSF biomarker information. In cohort 1, out of 388 CU participants (median (SD) age, 72.2 (5.5) years), 167 were women. In the MCI population, out of 187 participants (median (SD) age, 71.6 (5.4) years), 86 were women. In cohort 2, out of 147 CU participants (median (SD) age, 71.5 (5.1) years), 92 were women. In the MCI population, out of 95 participants (median (SD) age, 70.3 (5.5) years), 36 were women. In cohort 3, out of the 161 participants (median (SD) age, 63.0 (6.2) years), 105 were women.
Recruitment	This project was done as part of the prospective Swedish BioFINDER study. All participants for cohort 1 and cohort 2 were recruited in the prospective and longitudinal BioFINDER-1 study (www.biofinder.se) from 2009 to 2014 in southern Sweden. Recruitment of patients with cognitive impairment or neurological diseases was done at Memory clinics and Neurology clinics. The results for the patients may therefore be biased for a specialist setting. As we already state in the discussion our findings should be validated in a primary care setting. Recruitment of cognitively unimpaired controls was done through advertisements. Cohort 3 is the US Wisconsin Registry for Alzheimer's Prevention (wrap.wisc.edu) who were recruited between 2011 and 2019. Recruitment is described in Johnson et al 2018 DADM and was largely from the community via advertisement.
Ethics oversight	The study was approved by the Regional Ethics Committee in Lund, Sweden. The WRAP data were collected under a University of Wisconsin-Madison Institutional Review Board protocol. All participants in all 3 cohorts gave their informed consent to participate in the study and the data were collected according to the Declaration of Helsinki.

Note that full information on the approval of the study protocol must also be provided in the manuscript.

Field-specific reporting

Please select the one below that is the best fit for your research. If you are not sure, read the appropriate sections before making your selection.

Life sciences Behavioural & social sciences Ecological, evolutionary & environmental sciences

For a reference copy of the document with all sections, see [nature.com/documents/nr-reporting-summary-flat.pdf](https://www.nature.com/documents/nr-reporting-summary-flat.pdf)

Life sciences study design

All studies must disclose on these points even when the disclosure is negative.

Sample size	The study included two independent prospective cohorts (Swedish BioFINDER-1 study and a subset of the Wisconsin Registry for Alzheimer's Prevention (WRAP) with availability of the requisite data. The BioFINDER-1 was analyzed as a cross-sectional cohort (n=575) and a longitudinal cohort (n=242) with up to 6-years of clinical, imaging, and biochemical data. The WRAP cohort was analyzed longitudinal cohort (n=161) with up to 6-years of clinical, imaging, and biochemical data. Both cohorts were convenience cohorts and all available plasma samples were analyzed in this study. There is no indication that we were insufficiently powered for these analyses.
Data exclusions	The data were limited to the subsets of the source cohorts with available cognitive and biomarker data including plasma assay results. No analyzed samples were excluded from the main analysis but outliers were omitted from figures which are detailed in each legend. Samples <LLOQ were included in the analysis but a sensitivity analysis excluding <LLOQ samples was performed in order to assure that the significant results were not driven by the cases with very low plasma p-tau values. Results of the sensitivity analysis were very similar with the main results and are described in Supplementary Results.
Replication	To verify the findings in the longitudinal BioFINDER-1 cohort we included an independent longitudinal observational cohort from the Wisconsin Registry for Alzheimer's Prevention (WRAP). Even though WRAP participants were younger, all cognitively unimpaired, and in general had less frequency of co-morbidities, we reproduced the results in both cohorts (all attempts at replication were successful).
Randomization	In these 2 cohort studies (observational studies) no allocation into experimental groups were performed, therefore randomization is not relevant to this study. Statistical analyses were controlled for potential confounding effect of age and sex.
Blinding	All plasma, CSF and PET analyses were performed by individuals who were blinded to the clinical data. Authors who performed the data preprocessing were blinded to demographic and clinical characteristics of individuals.

Reporting for specific materials, systems and methods

We require information from authors about some types of materials, experimental systems and methods used in many studies. Here, indicate whether each material, system or method listed is relevant to your study. If you are not sure if a list item applies to your research, read the appropriate section before selecting a response.

Materials & experimental systems

n/a	Involved in the study
<input type="checkbox"/>	<input checked="" type="checkbox"/> Antibodies
<input checked="" type="checkbox"/>	<input type="checkbox"/> Eukaryotic cell lines
<input checked="" type="checkbox"/>	<input type="checkbox"/> Palaeontology and archaeology
<input checked="" type="checkbox"/>	<input type="checkbox"/> Animals and other organisms
<input type="checkbox"/>	<input checked="" type="checkbox"/> Clinical data
<input checked="" type="checkbox"/>	<input type="checkbox"/> Dual use research of concern

Methods

n/a	Involved in the study
<input checked="" type="checkbox"/>	<input type="checkbox"/> ChIP-seq
<input checked="" type="checkbox"/>	<input type="checkbox"/> Flow cytometry
<input checked="" type="checkbox"/>	<input type="checkbox"/> MRI-based neuroimaging

Antibodies

Antibodies used

Phosphorylated tau 181 (p-tau181): In BioFINDER-1, the p-tau181 assay was performed using phospho specific biotinylated capture antibody (IBA406, developed by Lilly Research Laboratories) and SULFO-TAG- conjugated anti-tau detection antibody (4G10E2, developed by Lilly Research Laboratories). In WRAP, p-tau181 was quantified by the commercial assay from Quanterix.

Phosphorylated tau 217 (p-tau217): In both BioFINDER-1 and WRAP, p-tau217 was quantified in the same manner. Biotinylated-IBA493 (developed by Lilly Research Laboratories) was used as a capture antibody and SULFO-TAG-4G10E2 as the detector.

Phosphorylated tau 231 (p-tau231): In both BioFINDER-1 and WRAP, p-tau231 was quantified in the same manner. For the novel plasma p-tau231 Simoa assay, monoclonal mouse antibodies were generated using a synthetic peptide (K224KVAVVR(pT)PPKSPSSAK240C) as a KLH-coupled antigen, numbered according to full-length tau-441 phosphorylated on threonine 231. Candidate hybridomas were selected on brain extracts of AD and control brain tissue. The final cloned and purified monoclonal antibody, ADx253, was characterized on synthetic peptides spanning amino acids threonine 217 till serine 241 of full-length tau for its affinity, its phospho-specificity using both phosphorylated and non-phosphorylated peptides and its preferred selectivity in which position 232 was replaced by a Pip, to simulate cis-selectivity of ADx253. A biotin-conjugated N- terminal anti-tau mouse monoclonal antibody was used for detection.

Validation

Immunoassay for detection of P-tau181 in human plasma has been previously described by Mielke et al. (Alzheimers Dement 14, 989-997, 2018). Fit for purpose assay validation has been performed by Eli Lilly according to Andreasson et al. (Frontiers in Neurology 2015). P-tau217 immunoassay was been fully described by Palmqvist et al. (JAMA. 2020;324(8):772-781) and p- tau231 by Ashton et al. (Acta Neuropathol. 2021 May;141(5):709-724). Immunoprecipitation and liquid chromatography-mass spectrometry assay for amyloid has been fully described by Schindler et al. (Neurology. 2019 Oct 22;93(17):e1647-e1659).

Commercial assays for amyloid, GFAP and NfI by Quanterix are propriety but have been widely reported in academic publications (e.g., Thijssen et al., DOI:10.1002/dad2.12285). The Elecsys prototype is propriety but is detailed in a future publication (Palmqvist et al., Alzheimer's & Dementia).

Clinical data

Policy information about [clinical studies](#)

All manuscripts should comply with the ICMJE [guidelines for publication of clinical research](#) and a completed [CONSORT checklist](#) must be included with all submissions.

Clinical trial registration

BioFINDER-1: NCT01208675

Study protocol

BioFINDER-1: <https://clinicaltrials.gov/ct2/show/NCT01208675>
WRAP: <https://wrap.wisc.edu>

Data collection

Data were collected between 2009 and 2022. Participating cohorts included BioFINDER-1 (a mix of population-based and memory clinic-based studies in Lund and Malmo, Sweden) and WRAP (a longitudinal observational cohort study enriched with persons with a parental history of probable Alzheimer's disease).

Outcomes

The predefined primary outcome measures are longitudinal changes in plasma biomarker concentrations and their longitudinal changes on MMSE, mPACC and longitudinal brain atrophy. As predefined secondary outcomes we assessed brain β -amyloid positivity and longitudinal changes on delayed recall memory test.