

UDC 656.072.6

**PASSENGER TRANSPORT MANAGEMENT AT THE BRANCH
"MOTOR COMPANY NUMBER 6 NOVOPOLOTSK" OF "VITEBSKOBBLAVTOTRANS":
LOGISTICAL ASPECT**

NATALIA GUDKOVA, JOHN BANZEKULIVAHO
Polotsk State University, Belarus

The article describes the control system of passenger transportation in road transport operator: the structure and functions of the department exercising direct control over the transportation of passengers, its business processes, shows the algorithm design and execution of single orders on road transport of passengers in the irregular communication.

At the present time the demand for passenger transport services as well as the demand on the quality of services provided is continuously increasing. Therefore, it is important to create an optimal mechanism for passenger traffic using the methods of logistics.

Under the management of passenger transport logistics we mean a continuous process of planning, preparation, implementation and monitoring of the transport of passengers with the aim of providing quality services and optimizing the costs directly related to such transport.

The branch "Motor company number 6 Novopolotsk" of "Vitebskoblavtotrans" department of transportation and marketing of passenger transport carries out passenger transport management. According to "the Policy statement about the department of transportation and marketing of passenger transport" [1], head of the department carries the direct management of the department.

Figure 1 shows the organizational structure of the department of transportation and marketing of passenger transport of the branch "Motor company number 6 Novopolotsk" of "Vitebskoblavtotrans".

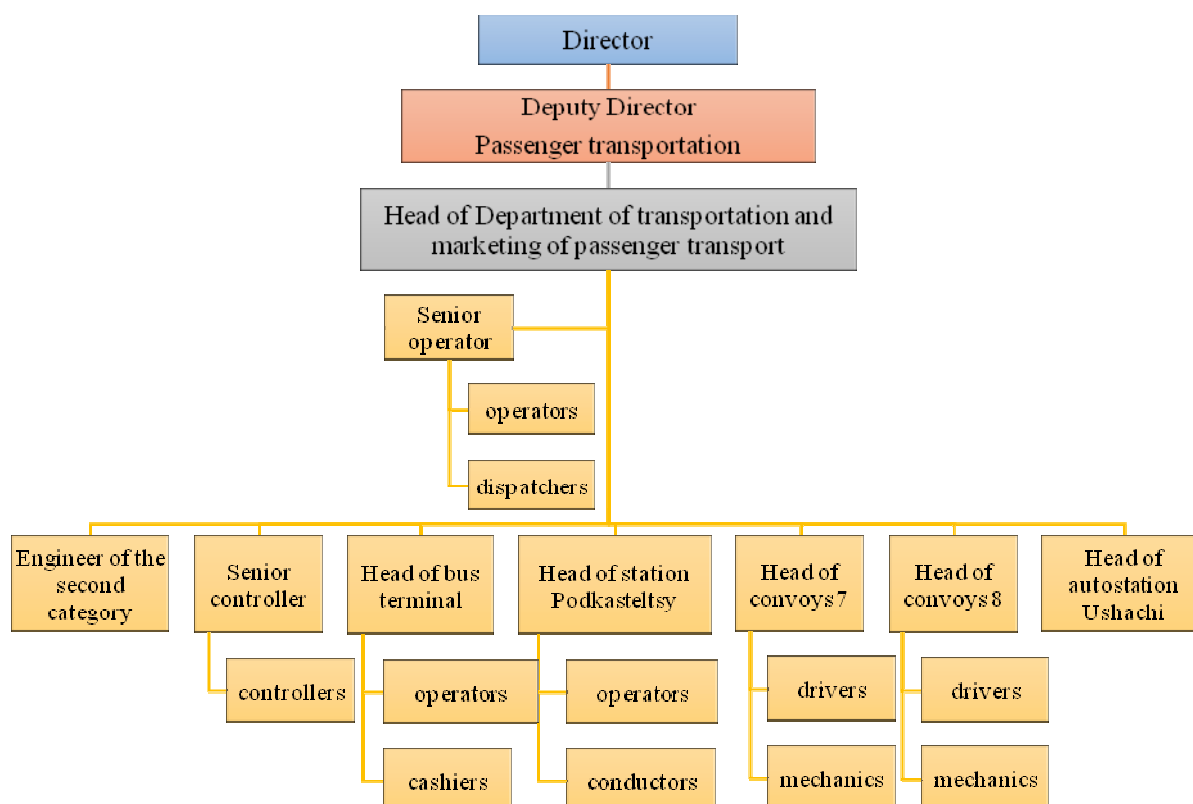


Fig. 1. The organizational structure of the department of transportation and marketing of passenger transport of the branch "Motor company number 6 Novopolotsk" of "Vitebskoblavtotrans"

Source: the author's working –out based on the examination of the documents at the enterprise.

Economics

Heads convoys are subject to head of the department of transportation and marketing on the organization of traffic and the chief engineer – in the technical part.

The duties and functions of the department are:

- implementation of the plan on all technical and economic indicators of passenger transportation;
- development of technology inspection of passengers on the routes;
- ensuring the planned release of buses on the line;
- monitoring the implementation schedules of buses on the line and mode of operation;
- efficient use of buses;
- organization of passenger traffic control staff and operational audit service;
- preparation of necessary documents for the organization of regular passenger services in urban, suburban, intercity and international means of transport and the occasional transportation of passengers;
- execution of officers and employees of departments and responsibilities to ensure the safe transportation of passengers;
- implementation of corrective and preventive actions necessary to implement the quality of transportation of passengers;
- participation in the activities aimed at improving the efficiency of rolling stock, the quality of customer services and passengers, strengthening of financial discipline;
- participation in the organization of monitoring compliance with the rules of transportation of passengers and baggage, the correct application of tariffs, the track design of documentation.

To study the process of control passenger traffic it's necessary to describe the basic business processes of the department of transportation and marketing of passenger transport (Table).

Table – Description of business processes of the department of transportation and marketing of passenger transport

| Business processes | Composition procedures function | Key documents | Realizer |
|---|--|---|--|
| Diagnostics on the routes | Conducting mass and selected diagnostics on urban and suburban routes. | Regulation for transport management department; Post profiles of an engineer. | Engineer. |
| Preparation of documents for the organization of transportation | Obtaining the necessary documents confirming the right of the organization to carry out the transportation of passengers. | Regulation for transport management department; Post profile of the Head of the Department; Post profile of the Senior dispatcher. | Head of the Department; Senior Manager. |
| Control over fulfillment of work schedules of buses on the route | Dispatching passenger transport in urban, suburban, intercity and international communication. | Regulation for transport management department; Post profile of the Senior dispatcher. | Senior Manager. |
| Control of passenger traffic | Checking passengers tickets. | Job description employees and operational control and auditing service. | Employees of operational control and auditing service. |
| Implementation of corrective and preventive actions necessary to implement high-quality transportation. | Checking the status of the rolling stock; Defining prospective and current needs of the transport operation for passenger traffic; Regulation of intervals on routes and changes to the schedule (charts) movements of the rolling stock, their coordination for various types of passenger transport. | Job description Head of Department; Job description Engineer; Job description Senior dispatcher; Job description Head and mechanic of convoys. | Head of Department; Engineer; Senior Manager; Head and mechanic of convoys. |
| Work claims | Consideration of the established procedure applications of citizens and legal entities on the transport service. | The position of the Department; Job description Head of Department; Job description Senior dispatcher; Job description Engineer. | Head of Department; Senior Manager; Engineer. |

Source: the private development based on examination of documents Enterprise.

Table 1 shows that business process services transporting passengers operate, starting with a survey of passenger traffic on routes to work on claims, including the preparation of necessary documents and conditions for high-quality transportation, as well as monitoring its implementation.

Next, consider the operation of business processes to fill orders and scheduling, the implementation of which carries out department of transportation and marketing of passenger transport of the branch "Motor company number 6 Novopolotsk" of "Vitebskoblavtotrans".

Regulations of the process for completing the applications themselves did not install. The order of operation for filling applications has described in Regulation "On the procedure of registration and performance of single orders on road transport of passengers in the irregular communication" [2].

Scheduling according to job description engineer of the second category of the branch "Motor company number 6 Novopolotsk" of "Vitebskoblavtotrans" provides the engineer of the second category [3]. The operation has carried out manually basis on rules and formulas for scheduling.

The branch "Motor company number 6 Novopolotsk" of "Vitebskoblavtotrans" provides both regular and irregular (one-time, on permanent contracts, transportation of groups of children, and others) types of services.

Both regular and irregular transport of passengers can be divide into urban, suburban, intercity and international.

For urban, suburban and intercity transport developed its own routes. Permanent route of international transportation is the transportation of passengers to St. Petersburg.

Consider the algorithm design and execution of single orders on the road transport of passengers in the irregular communication (see figure 2).

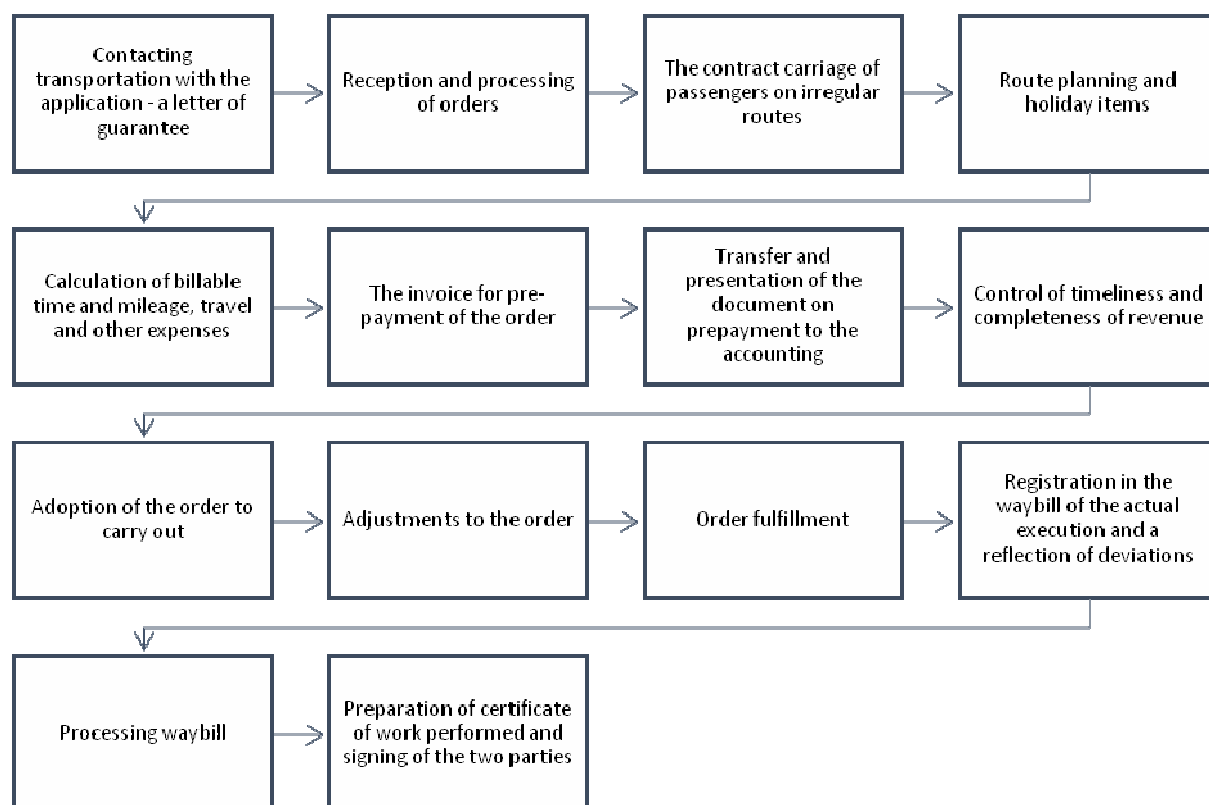


Fig. 2. The algorithm design and execution of single orders on the road transport of passengers in the irregular communication

Source: the private development based on [2].

When transporting groups of children should be provided:

- information application in the traffic police;
- a letter to the traffic police;
- acts of maintenance for each machine;
- approved a list of drivers who have the right to transport children.

Logistical management of passenger transportation in the department of transportation and marketing of passenger transport has carried out using the following programs:

- Azimut-2;
- ACS-interval 2M;
- 1C Accounting.

The system "Azimuth-2" has intended for registration and analysis of travel of vehicles based on satellite navigation systems (in particular, GPS). The traffic information received from the devices installed in vehicles is stored and transmitted to the server system, which analyzes and systematization of primary information, the determination of the facts of the stops, arriving at the designated point, the calculation of mileage, speed, travel time, performing routes etc. [4].

This information is transmitted to the "ACS-INTERVAL 2M". Purposes of the system are:

– dispatch transportation management, objective tool control and accounting performance of the transport operation, the operational definition of places of accidents and emergencies, increase efficiency in the delivery of medical care and evacuation of casualties, conducting activities of the Ministry of Emergency Situations and mobilization readiness;

– formation of reporting data on the implementation of the transport operation, the driver, the vehicle (day, evening and night, the regularity of flights, the total mileage and linear, while the general on the line, downtime);

– getting reporting data on the work of air traffic controllers (managers negotiate with the drivers of vehicles carrying out control actions in the regulation of traffic);

– formation and printing of block scheduling. Formation of outfits to produce vehicles [5].

Data obtained using the "ACS-INTERVAL 2M" from the bus station, from the stations Podkasteltsy and Ushachi, loaded in "1C". "1C: Accounting" is designed to automate accounting and tax records, including preparation of the obligatory (regulated) reporting, organizations engaged in any kind of commercial activity: wholesale and retail trade, services, manufacturing, etc. Accounting and tax records are maintained in accordance with the current legislation of the Republic of Belarus [6].

Data on the waybill have entered and downloaded in the program, and then it defines the award each driver.

Thus, we can conclude about close cooperation personnel of the department of transportation and marketing of passenger transport between itself and directly with the software for the purpose of efficient logistics passenger management.

REFERENCES

1. The position of the "Department of transportation and marketing of passenger transport" of the branch "Motor company number 6 Novopolotsk" of "Vitebskoblavtotrans". – Novopolotsk, 2015.
2. Regulation "On the procedure of registration and performance of single orders on road transport of passengers in the irregular communication" of "Motor company № 6 Novopolotsk", 2013.
3. Job description Engineer of the second category of the branch "Motor company number 6 Novopolotsk" of "Vitebskoblavtotrans". – Novopolotsk, 2015.
4. Automated software and hardware to integrate the work of motor transport and road construction equipment. Moving Vehicle registration system Azimuth-2 [Electronic resource]. – Minsk, 2010.
5. The automated navigation system of dispatching management of passenger transport (ACS-Navigation) [Electronic resource]. – Mode of access: <http://www.transnavi.ru/projects/asdu/about/about.php>. – Date of access: 07.16.2015.
6. 1C: Accounting 8.0 for Belarus [Electronic resource]. – Mode of access: <http://buhsoft.bl.by/soft/212208.php>. – Date of access: 07.16.2015.

UDC 33.1.101.2(476)=111

DYNAMICS OF LABOR MIGRATION IN THE REPUBLIC OF BELARUS AS A PROBLEM IN THE LABOUR MARKET

LOLITA DAVIDOVICH, VITALY KOZLOVSKY
Polotsk State University, Belarus

This article gives an analysis of the dynamics of the labor force in the Republic of Belarus. It covers the question of general status of migration processes in the country and focuses on its negative phenomena. The author also suggests a number of measures that can help to solve the problems in the labor market.

For years the international labor migration has been one of the most discussed topics in the world. Due to temporary migrant workers a state can improve its resource potential, balance the labor market, reduce unemployment, etc. However when the outflow of the skilled labor force takes place the labor market suffers an irreparable damage which can later lead to the deterioration of the economic situation of the country as a whole.

In the Republic of Belarus state regulation and control in the field of foreign labor migration is carried out by the President, the Council of Ministers, the bodies of internal affairs and other state bodies within their