



Alliance

From Fragility to Resilience in Central and West Asia and North Africa (F2R-CWANA)

WP1: Innovations in partnerships, policies and platforms for the efficient, inclusive and climate resilient transformation of agrifood systems

Inception Workshop – Morocco May 17, 2022

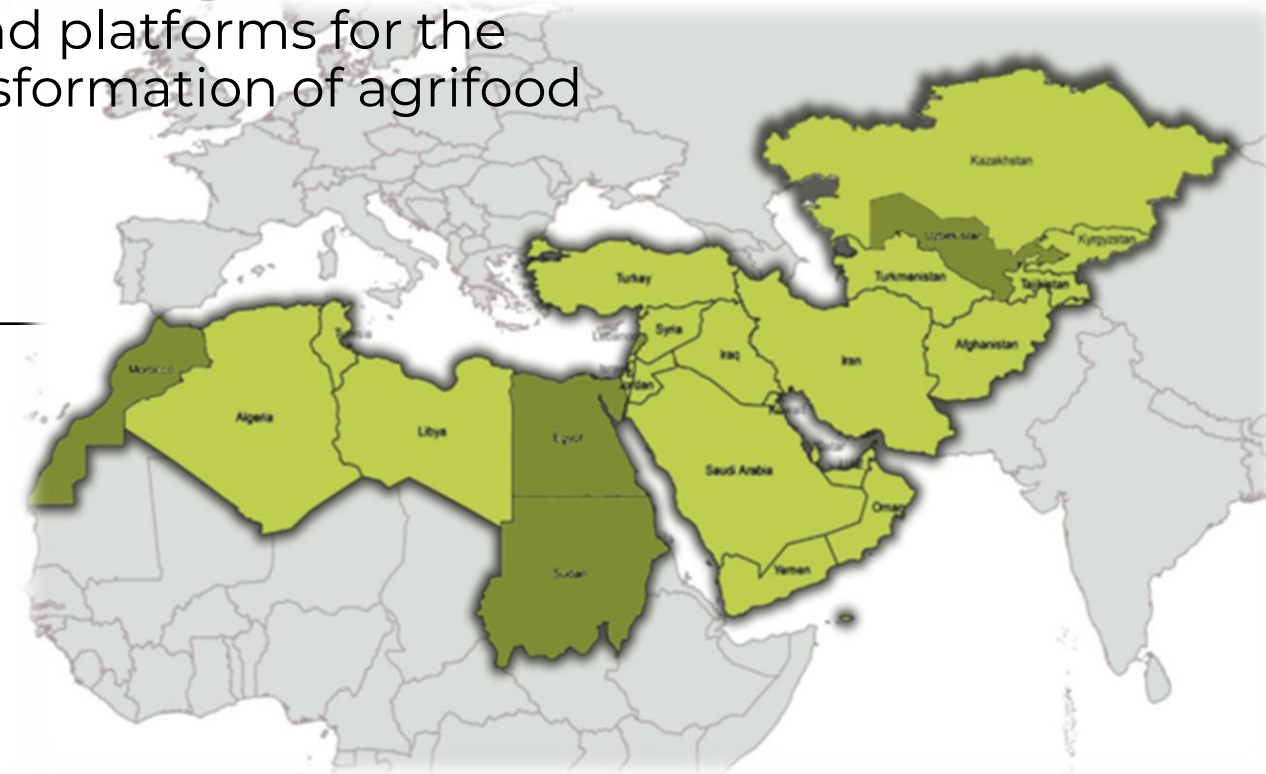
WP Members:

Boubaker Dhehibi (ICARDA)

Kamiljon Akramov (IFPRI)

Dina Najjar (ICARDA)

Sikandra Kurdi (IFPRI)



Challenge: WP1 level

Key challenges WP1 intend to address:

Producers, SMEs, and value chain actors struggle to access resources to manage risks and are not adequately supported by policies and institutions

Interconnected policies and actions that concurrently address the environmental, social and economic challenges

Public sector has a less effective role in enhancing value chain access and performance by embracing an integrated risk management approach to value chains

Public policy, regulatory frameworks and international agreements are critical to implementing more sustainable agricultural practices in CWANA

Agricultural technologies and practices, including those qualifying as CSA, are not achieving their full potential impact

High level of **conflicts** and **migration, gender disparities** and **youth unemployment**

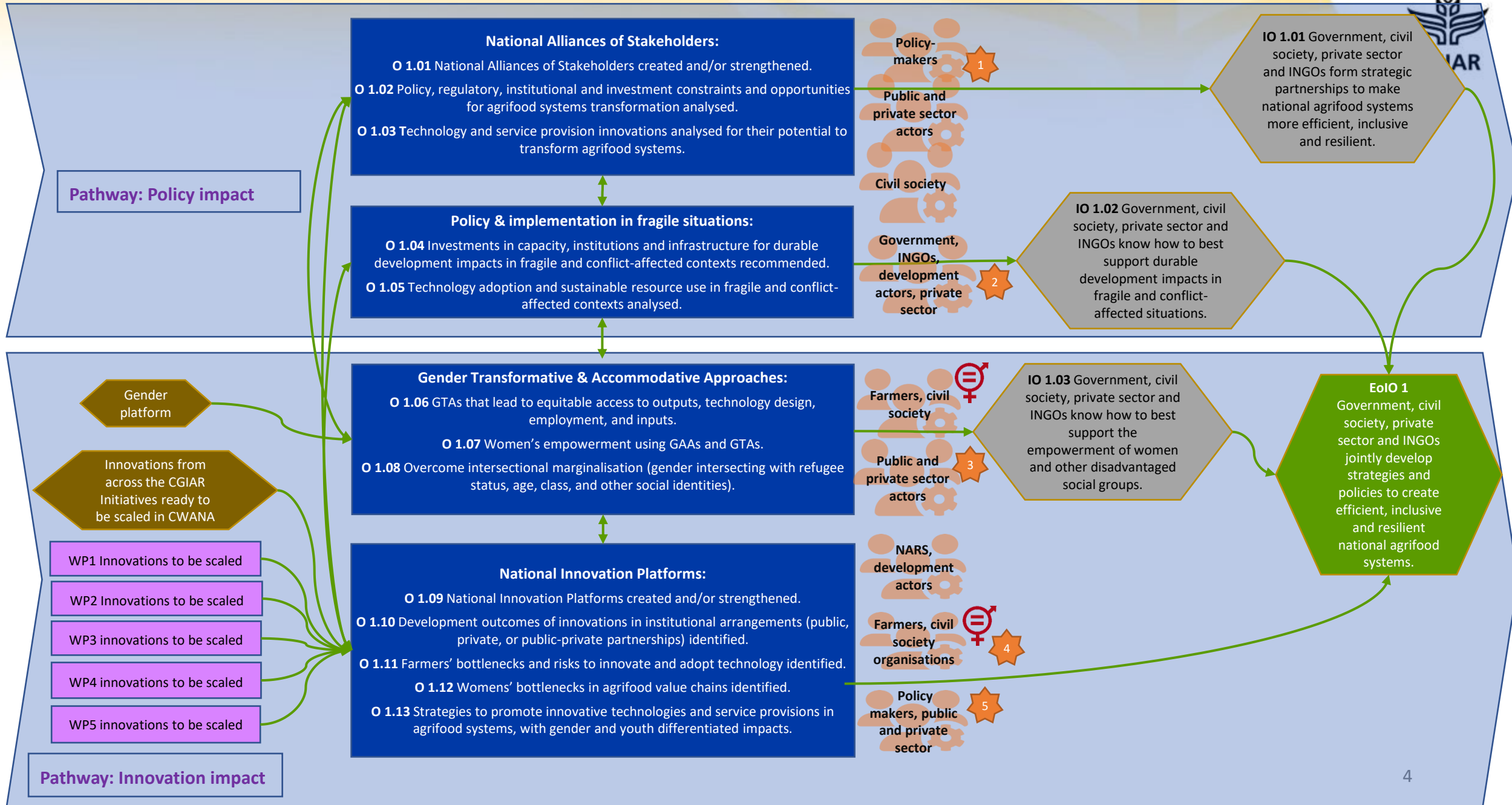
WP Main Focus and Prioritization

- **WP1 prioritization:** an active engagement with key regional stakeholders and **understanding how policy, regulatory, institutional, and technological innovations** can transform the agri-food systems in the region to make them **inclusive, efficient, and resilient** to external shocks and climate change.
- **WP1 process:** setting up of **National Alliances of Stakeholders** and understanding institutional constraints as a key factor in enabling CGIAR scientific innovations to reach farmers at scale, through **WP1 Innovations (CG Accelerator & RIAPA modelling toolkit)** and setting up new **National Innovation Platforms** or strengthening existing ones.

Overview: WP research questions

Innovations in partnerships, policies and platforms are required to support the efficient, inclusive and climate-resilient transformation of agrifood systems, focusing on:

- **Understanding** the main challenges and opportunities to make national agrifood systems more efficient, inclusive, and resilient.
- **Assessing** pathways on how can policy design and implementation in fragile and conflict-affected situations be made more effective, inclusive, and resilient.
- **Development** of gender-transformative approaches (GTAs) and gender accommodative approaches (GAAs) that can lead to the empowerment of women in CWANA and address gender-specific bottlenecks (limited access to technologies, information, land rights).
- **Recommendations** on institutional innovations needed to achieve the transformation of efficient, inclusive, and resilient agrifood systems.



WPI Theory Of Change

Outputs – 3-year timeframe

National Alliances of Stakeholders:

- 1.01 National Alliances of Stakeholders created and/or strengthened.
- 1.02 Policy, regulatory, institutional and investment constraints and opportunities for agrifood systems transformation analysed.
- 1.03 Technology and service provision innovations analysed for their potential to transform agrifood systems.

Policy & implementation in fragile situations:

- 1.04 Investments in capacity, institutions and infrastructure for durable development impacts in fragile and conflict-affected contexts recommended.
- 1.05 Technology adoption and sustainable resource use in fragile and conflict-affected contexts analysed.

Gender Transformative & Accommodative Approaches:

- 1.06 GTAs that lead to equitable access to outputs, technology design, employment, and inputs.
- 1.07 Women's empowerment using GAAs and GTAs.
- 1.08 Overcome intersectional marginalisation (gender intersecting with refugee status, age, class, and other social identities).

National Innovation Platforms:

- 1.09 National Innovation Platforms created and/or strengthened.
- 1.10 Development outcomes of innovations in institutional arrangements (public, private, or public-private partnerships) identified.
- 1.11 Farmers' bottlenecks and risks to innovate and adopt technology identified.
- 1.12 Womens' bottlenecks in agrifood value chains identified.
- 1.13 Strategies to promote innovative technologies and service provisions in agrifood systems, with gender and youth differentiated impacts.

Outcomes – 3-year timeframe

WPI Outcome 1: Government, civil society, private sector and INGOs form strategic partnerships to make national agrifood systems more efficient, inclusive and resilient

WPI Outcome 2: Government, civil society, private sector and INGOs know how to best support durable development impacts in fragile and conflict-affected situations

WPI Outcome 3: Government, civil society, private sector and INGOs know how to best support the empowerment of women and other disadvantaged social groups

End of Initiative Outcome

Government, civil society, private sector and INGOs work together to create efficient, inclusive and resilient national agrifood systems

Position of WPI within the F2R-CWANA Initiative: Smart Chain Strategic Innovation Platforms and Stakeholder & Learning Alliances



Example Dryland Morocco

Objectives

Institutional and policy settings

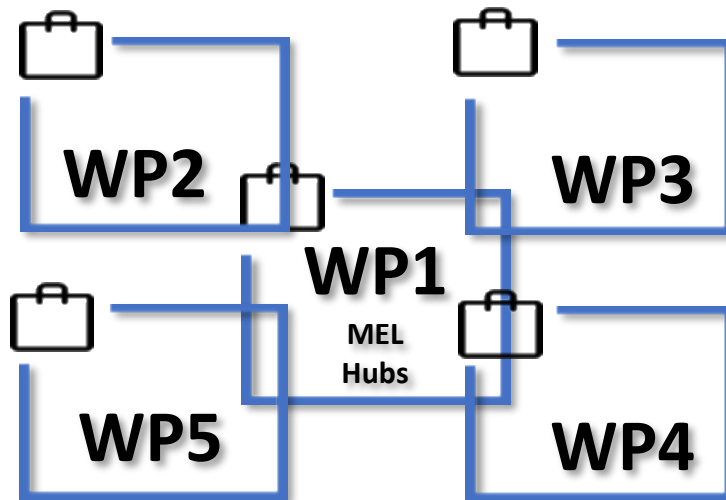
Digital (ICT) platform

Innovation (know-how) hubs

Platform socio-economy (IA)

Scaling hubs

Level of Innovation Platform



Alliance of stakeholders: AMAC

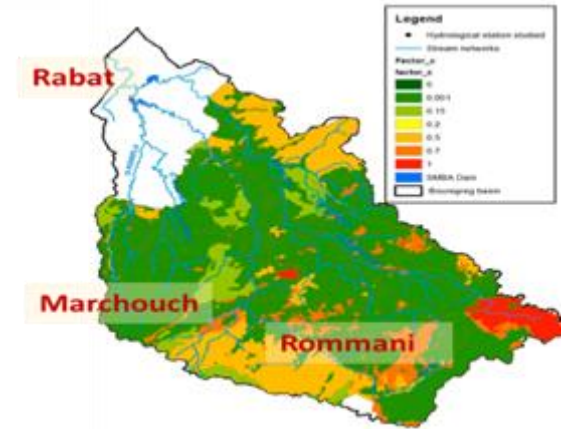
Level of Integration

Value chain: Rainfed Cereals with small ruminants

Watershed Bouregreg River

Farming community

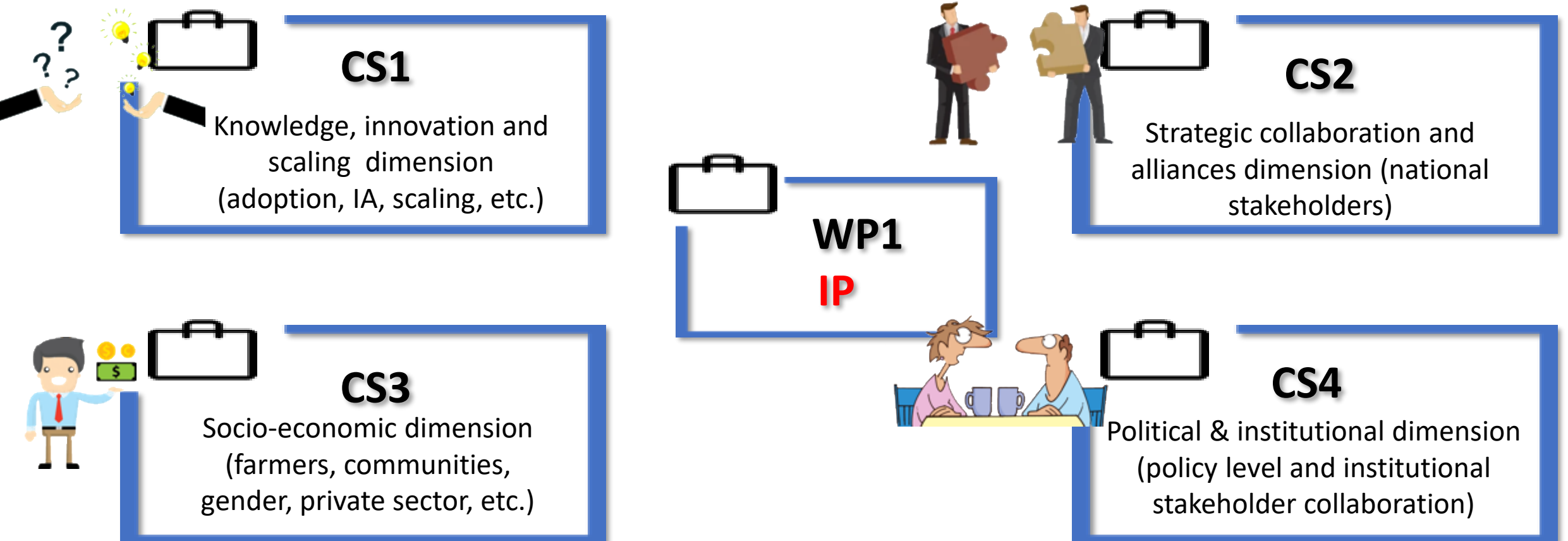
Research farm Marchouch



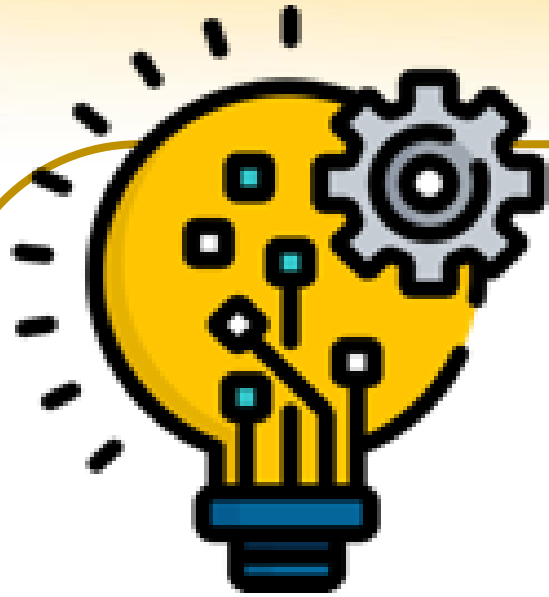
WP1 as a Comprehensive Innovation Platform for the F2R-CWANA Initiative

WP1-IP Cornerstones (CS)

WP1: to create and implement a Joint Stakeholder Platform that facilitates knowledge, innovative practical solutions and know-how transfer



Innovations in WP1



Farm to basin smart tools for water efficiency and management

CGIAR Accelerator and Open Innovation Program

The Rural Investment and Policy Analysis Modeling (RIAPA) Toolkit

Innovations

Toolbox of Nature-based Solutions for people and planet

Promoting in-situ conservation of CWANA dryland agrobiodiversity

Participatory Product Profile Performances

Weather station-based irrigation advisory system

Resilient food and feed crops adapted to MENA region

Scale-appropriate mechanization for CWANA

WP1- CGIAR Accelerator for CWANA

An ***open innovation platform*** to address challenges and to provide innovative solutions for fast-tracked adoption of policy, institutional and technological innovations to build resilient agri-food systems in the region

Facilitates 1CG's collaboration with policymakers, investors, researchers, and other stakeholders at regional, national and subnational levels

CGIAR Accelerator for CWANA aims to:

- Identify policy and regulatory constraints and bottlenecks for innovation and technology adoption
- Support accelerated adoption of policy, institutional and technological innovations
- Provide stakeholders with easy access to knowledge on innovations related to agri-food systems in CWANA and internationally



Collaboration on data and evidence both regionally and globally

Measuring innovation and its impact on achieving 1CG collective global targets

Supporting accelerated implementation of in-house innovations and solutions

Identifying external innovations and modifying them for use in CWANA

Stimulating and facilitating innovation and research ecosystems in the region

Risk factors

- Uncoordinated efforts due to misalignment of activity with initiative design
- Brings forth broader policy, regulatory and institutional challenges



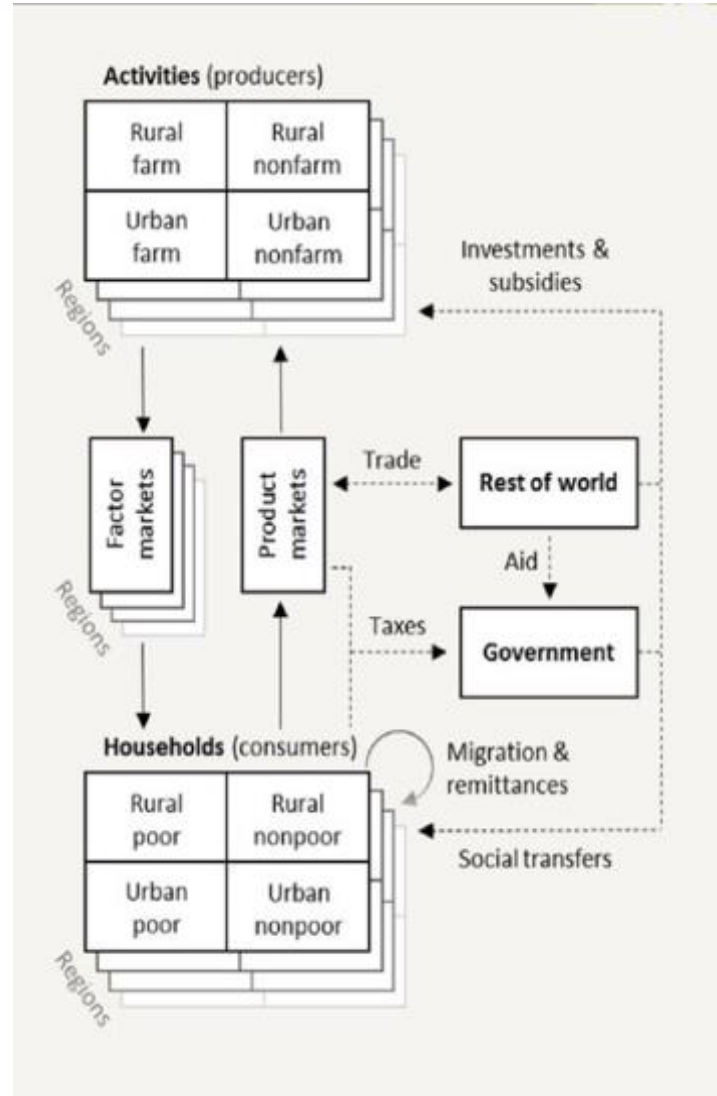
WP1- Rural Investment and Policy Analysis (RIAPA) Modeling Toolkit



What is RIAPA?

- **Ex-ante Economic-Wide Analysis**
 - **Estimates** impacts on a range of outcomes (e.g., growth, jobs, poverty, food security, nutrition, etc.)
 - **Priorities** between investment (e.g., which crop to target? Irrigation vs improved seed varieties?)
 - Assess potential benefits and constraints when **scaling-up** interventions
- **RIAPA captures two potential considerations** for investments:
 - Economy-wide linkages (e.g., projects spillovers, value chain, agri-food systems)
 - Macro-micro indications (e.g., investments – growth – poverty)

Economywide Framework



RIAPA – Tool for analyzing the contribution of agricultural investments to broader rural transformation goals

- **Disaggregates national economy** into activities and households in different regions
- **Track income and expenditure** flows between all economic actors including the government and the rest of world
- **Actors interact in markets** to set prices for products and factors
- **Macroeconomic consistency** is maintained

Plan of Results (3-YTF)– All CWANA Countries



Activities	Countries
Output 1.1: National Alliances of Stakeholders created and/or strengthened <u>Activity:</u> Consulting with stakeholders and determining priorities for in-depth review and for initiating and maintain meaningful engagement	Morocco, Egypt, and Uzbekistan
Output 2.1: Policy, regulatory, institutional and investment constraints and opportunities for agrifood systems transformation analysed <u>Activity:</u> Analysis of policy constraints and key drivers of policy change in agrifood systems	Uzbekistan
Output 1.2: Investments in capacity, institutions and infrastructure for durable development impacts in fragile and conflict-affected contexts recommended <u>Activity:</u> Analysis of policy and institutional issues and infrastructure bottlenecks in fragile and conflict affected contexts	Sudan
Output 2.2: Technology adoption and sustainable resource use in fragile and conflict-affected contexts analysed <u>Activity:</u> Analysis of technology adoption and sustainable resource use in fragile and conflict-affected contexts	Sudan
Output 1.3: GTAs that lead to equitable access to outputs, technology design, employment, and inputs <u>Activity:</u> The power of collectives and cereal processing	Morocco, Lebanon
Output 2.3: Women’s empowerment using GAAs and GTAs <u>Activity:</u> GTA or GAA: Mix and Match	Morocco, Lebanon
Output 3.3: Overcome intersectional marginalisation (gender intersecting with refugee status, age, class, and other social identities) <u>Activity:</u> Marginalization and empowerment in rural collectives	Morocco, Lebanon
Output 4.3: National Innovation Platforms created and/or strengthened <u>Activity:</u> Policy dialogue and engagement on multi-stakeholder platform for upscaling, knowledge products & data platforms and engagement with private investors, including exploring PPPs	Morocco and Uzbekistan
Output 6.3: Farmers’ bottlenecks and risks to innovate and adopt technology identified <u>Activity:</u> Evaluation of farmers' bottlenecks and risks to innovate and adopt new technologies	Morocco, Uzbekistan
Output 8.3: Strategies to promote innovative technologies and service provisions in agrifood systems, with gender and youth differentiated impacts <u>Activity:</u> Gender-responsive PP in cereals	Morocco, Lebanon

Plan of Results - Morocco



Deliverables (Outputs)	Activities	Synergies with WPs	Partners	Scale/location (national, basin level, etc.)	Synergies CG Initiatives	Timeline			
						2022 (Q3)	2023	2024	2025 (Q2)
Output 1.1: National Alliances of Stakeholders created and/or strengthened	Consulting with stakeholders and determining priorities for in-depth review and for initiating and maintain meaningful engagement	WP2, WP3, WP4, WP5	INRA, MoA, Farmers associations, cooperatives, Universities Private sector, Financial institutions (INRA)	National	Innovations from across the CGIAR Initiatives ready to be scaled in CWANA	X	X	X	X
Output 1.3: GTAs that lead to equitable access to outputs, technology design, employment, and inputs	The power of collectives and cereal processing	WP2	INRA, MoA, Oxfam	Basin	Gender Platform	X	X	X	?
Output 2.3: Women's empowerment using GAAs and GTAs	GTA or GAA: Mix and Match	WP2	INRA, MoA, Oxfam	Basin	Gender Platform	X	X	X	?
Output 3.3.: Overcome intersectional marginalisation (gender intersecting with refugee status, age, class, and other social identities)	Marginalization and empowerment in rural collectives	WP2, Wp3	INRA, MoA, Oxfam	Basin	Gender Platform	X	X	X	?
Output 4.3.: National Innovation Platforms created and/or strengthened	Policy dialogue and engagement on multi-stakeholder platform for upscaling, knowledge products & data platforms and engagement with private investors, including exploring PPPs	WP2, WP3, WP4, WP5	INRA, MoA, Farmers associations, cooperatives, Universities Private sector, Financial institutions (INRA)	National	Innovations from across the CGIAR Initiatives ready to be scaled in CWANA	X	X	X	X
Output 6.3.: Farmers' bottlenecks and risks to innovate and adopt technology identified	Evaluation of farmers' bottlenecks and risks to innovate and adopt new technologies	WP2, WP3, WP4, WP5	INRA, MoA, Farmers associations	Basin	-	X	X	X	X
Output 8.3.: Strategies to promote innovative technologies and service provisions in agrifood systems, with gender and youth differentiated impacts	Gender-responsive PP in cereals	WP2, WP3	INRA, MoA, Oxfam	Basin	Gender Platform	X	X	X	?

Note: INRA and MoA are the key/focus partners for WP1

Partners - Morocco



Deliverables (Outputs)	Activities	Partners	Role
Output 1.1: National Alliances of Stakeholders created and/or strengthened	Consulting with stakeholders and determining priorities for in-depth review and for initiating and maintain meaningful engagement	INRA, MoA, Farmers associations, cooperatives, Universities Private sector, Financial institutions (INRA)	Identification and secure the engagement of the key stakeholders for the national alliances Provide mechanisms by which stakeholders can offer input into the research process Conduction workshops and meeting with stakeholders Data collection and analysis
Output 1.3: GTAs that lead to equitable access to outputs, technology design, employment, and inputs	The power of collectives and cereal processing	INRA, MoA, Oxfam	Collect primary and secondary data Data analysis
Output 2.3: Women's empowerment using GAAs and GTAs	GTA or GAA: Mix and Match	INRA, MoA, Oxfam	Collect primary and secondary data Data analysis
Output 3.3.: Overcome intersectional marginalisation (gender intersecting with refugee status, age, class, and other social identities)	Marginalization and empowerment in rural collectives	INRA, MoA, Oxfam	Collect primary and secondary data Data analysis
Output 4.3.: National Innovation Platforms created and/or strengthened	Policy dialogue and engagement on multi-stakeholder platform for upscaling, knowledge products & data platforms and engagement with private investors, including exploring PPPs	INRA, MoA, Farmers associations, cooperatives, Universities Private sector, Financial institutions (INRA)	Support the creation and/functioning of IP Secure engagement of IP actors and sustain relationships (concerns, priorities, skills)
Output 6.3.: Farmers' bottlenecks and risks to innovate and adopt technology identified	Evaluation of farmers' bottlenecks and risks to innovate and adopt new technologies	INRA, MoA, Farmers associations	Collect primary and secondary data Data analysis
Output 8.3.: Strategies to promote innovative technologies and service provisions in agrifood systems, with gender and youth differentiated impacts	Gender-responsive PP in cereals	INRA, MoA, Oxfam	Collect primary and secondary data Data analysis

Capacity Development Needs



Activities	Partners	Capacity needs
Consulting with stakeholders and determining priorities for in-depth review and for initiating and maintain meaningful engagement	INRA, MoA, Farmers associations, cooperatives, Universities Private sector, Financial institutions (INRA)	Kaleidoscope model of policy change, social network analysis, and other qualitative research methods Rural Investment and Policy Analysis Modeling Toolkit (RIAPA)
The power of collectives and cereal processing	INRA, MoA, Oxfam	Gender-approach for data collection and evaluation
GTA or GAA: Mix and Match	INRA, MoA, Oxfam	Gender-approach for data collection and evaluation
Marginalization and empowerment in rural collectives	INRA, MoA, Oxfam	Gender-approach for data collection and evaluation
Policy dialogue and engagement on multi-stakeholder platform for upscaling, knowledge products & data platforms and engagement with private investors, including exploring PPPs	INRA, MoA, Farmers associations, cooperatives, Universities Private sector, Financial institutions (INRA)	Establish a community advisory board for the IP Coordinate and secure functioning of IP Establish priorities and guidance Establishing a metric MEL system to assure impact at scale
Evaluation of farmers' bottlenecks and risks to innovate and adopt new technologies	INRA, MoA, Farmers associations	Primary and secondary data collection Questionnaire development and data collection Cost benefit and impact assessment analysis
Gender-responsive PP in cereals	INRA, MoA, Oxfam	Gender-approach for data collection and evaluation

Ensuring WPI success?

- Well-resourced and well prepared national WPI teams.
- An effective and realistic partnership process with international/national/local/ stakeholders (Strategic alliances of stakeholders).
- Integrated and performant innovations platforms .
- Having a potential scaling readiness approach of Innovations (e.g., CG Accelerator & RIAPA) to enhance impact.
- Effective synergies with other WPs.
- Effective interactions with other initiatives.



Alliance



One CGIAR

THANK YOU!