



AgriLAC Resiliente:
Resilient Agrifood Innovation
Systems in Latin America and
the Caribbean

AgriLAC Resiliente: Planned Impact Assessment

**SPIA Matchmaking Event, Cali,
Colombia**

Diana Lopera, Byron Reyes, Katherine
Quintero
15-17 November 2022

AgriLAC Resiliente: Integrated work packages



AgriLAC Resiliente:
Resilient Agrifood Innovation
Systems in Latin America and
the Caribbean

Crosscutting
MELIA
GSI

WP1 will bring together CGIAR knowledge on agronomy, ecology, nutrition and climate change to co-develop **SET innovations** with local AFS partners



Shaping nutrition-sensitive socioecological-technological (SET) 'best bets'


Science-informed policies, investments and institutions

WP5 will work together with governments and investors to support **up-scaling** of AgriLAC's SET innovations through public policies and sustainable investments

*Strengthen **agri-food innovation systems** at different scales to increase the **resilience, ecosystem services, and competitiveness** of agri-food systems so that they are **better equipped** to address the **most pressing needs** of food and nutrition security, climate crisis, and migration*

WP2 will focus on enabling access and use of **agroadvisory services** through inclusive digital tools for managing tailored and localized risks



Inclusive digitally enabled agro-advisories for risk management



InnovaHub networks for agrifood innovation and scaling

WP4 will generate collaborative bottom-up pathways for **scaling** SET innovations and inclusive digitally enabled agro-advisories to strengthen AFS

WP3 will develop mechanisms for AFS actors to meet both **climate change mitigation** and development goals



AFS development to both mitigation and sustainable development goals

AgriLAC Resiliente: Integrative Regional Initiative



AgriLAC Resiliente:
Resilient Agrifood Innovation
Systems in Latin America and
the Caribbean



- Collaborative science
- Effective scaling
- Comprehensive impact

- Guatemala & Honduras primary target (extend to CA-4)
- Colombia, Mexico y Perú scaling countries
- Co-design process with +160 organizations across the region
- Integrated research focus: Demand-driven scientific research
- Collaboration with other initiatives and bilateral projects

● Focal countries ● Scaling countries

End of Initiative outcomes



AgriLAC Resiliente:
Resilient Agrifood Innovation
Systems in Latin America and
the Caribbean








2022–2024: understand, co-design, test, and pilot phases of the Initiative

2025–2030: broader mainstreaming, realignment of policy and investment, scaling, and integration

By 2024: Innovations

5 countries 250k farmers	(Eol-O1) Nutrition-sensitive socio-ecological-technological (SET) innovations
3 countries 200k farmers	(Eol-O2) Agrifood innovation systems empowered by a digitally-enabled ecosystem
3 countries 300k hectares	(Eol-O3) Low-emission strategies integrated into development goals
4 countries 250k farmers	(Eol-O4) InnovaHubs to better accelerate on-farm uptake of SET innovations
3 countries	(Eol-O5) Transformative and climate adaptation-friendly AFS-related policies, incentives, and investments

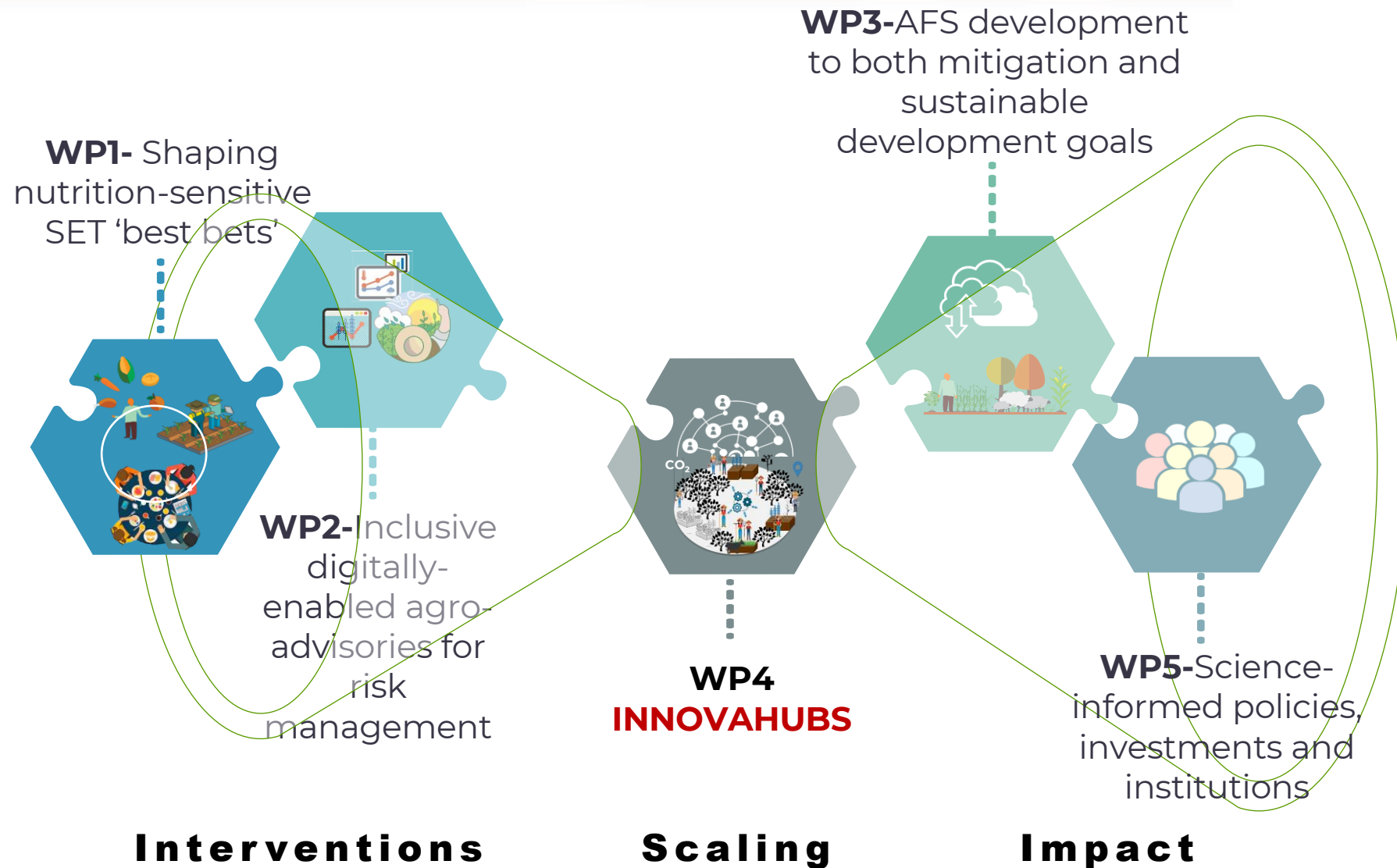
2030 PROJECTED BENEFITS

-  Nutrition, health, & food security
-  Poverty reduction, livelihoods & jobs
- 8.3 million people including youth**
-  Gender equality, youth & social inclusion
- 2.5 million women**
-  Climate adaptation & mitigation
- 8.7 million people**
-  Environmental health & biodiversity
- 19 million hectares**

AR4D Systemic and integrated approach



AgriLAC Resiliente:
Resilient Agrifood Innovation
Systems in Latin America and
the Caribbean



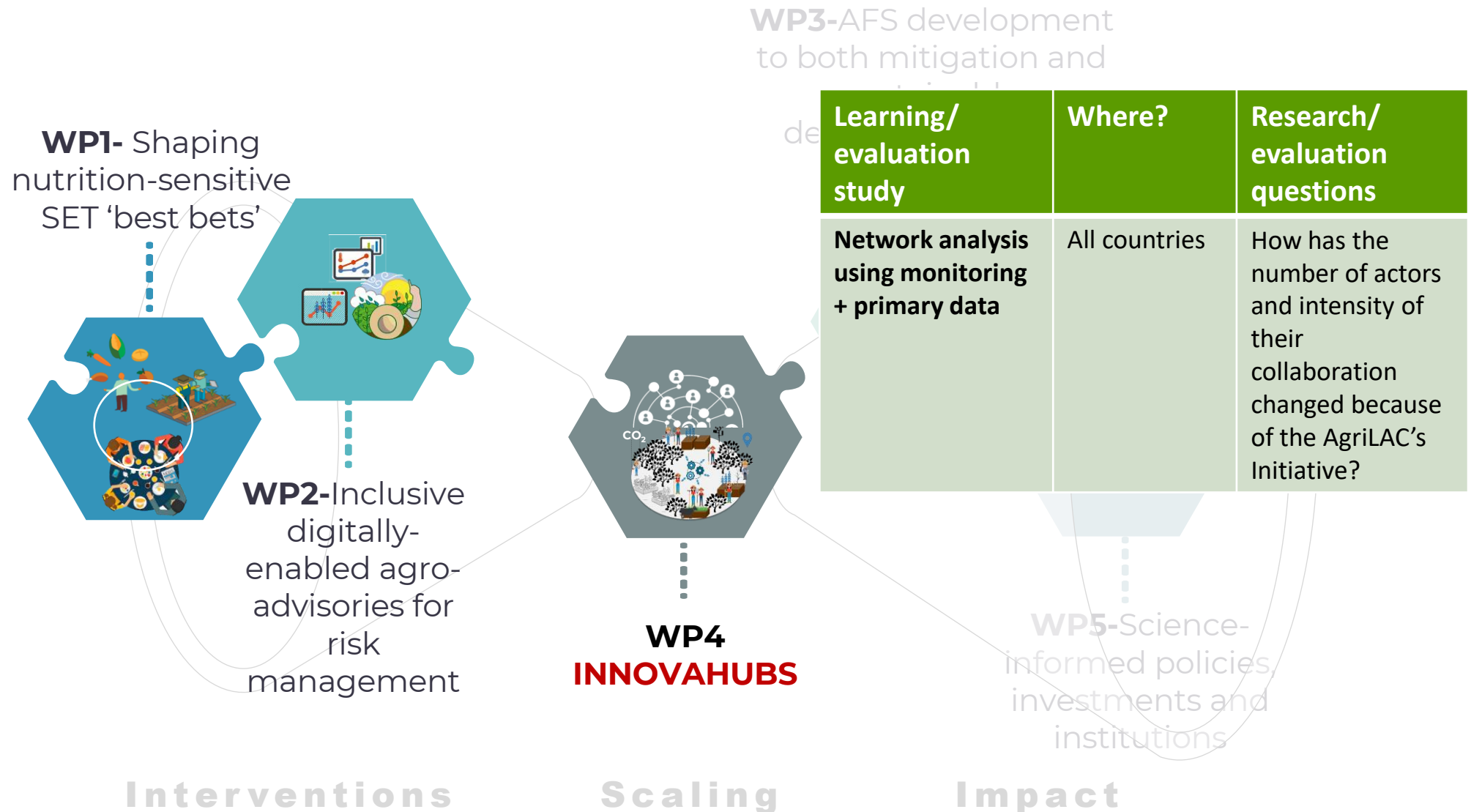
Now looking briefly at our evaluation strategy and planned studies

Study	Objective
1	Network analysis
2	Two-stage evaluation of adoption of MTA outputs
3	Impact evaluation of AgriLAC's interventions thru the InnovaHubs
4	Gender learning study

AgriLAC evaluation strategy



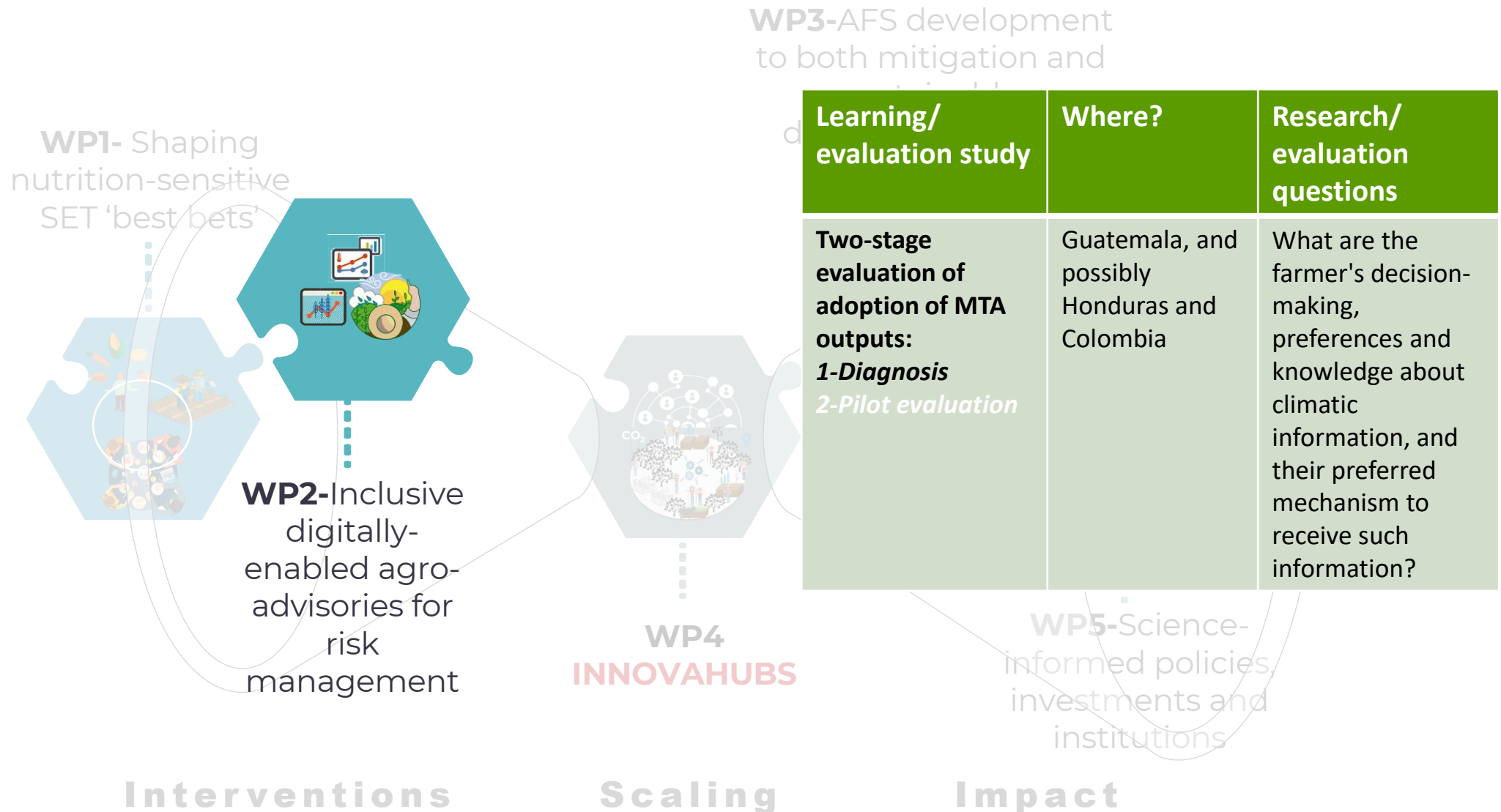
AgriLAC Resiliente:
Resilient Agrifood Innovation
Systems in Latin America and
the Caribbean



AgriLAC evaluation strategy



AgriLAC Resiliente:
Resilient Agrifood Innovation
Systems in Latin America and
the Caribbean



AgriLAC evaluation strategy



AgriLAC Resiliente:
Resilient Agrifood Innovation
Systems in Latin America and
the Caribbean

WP3-AFS development
to both mitigation and

WP1- Shaping
nutrition-sensitive
SET 'best bets'



WP2-Inclusive
digitally-
enabled agro-
advisories for
risk
management

WP4
INNOVAHUBS

Learning/ evaluation study	Where?	Research/ evaluation questions
Two-stage evaluation of adoption of MTA outputs: <i>1-Diagnosis</i> <i>2-Pilot evaluation</i>	Guatemala, and possibly Honduras and Colombia	-What are the changes caused by the MTAs' "improved" outputs and their effects on farmers? -Which delivering mechanism is most effective?

WP5-Science-
informed policies,
investments and
institutions

Interventions

Scaling

Impact

AgriLAC evaluation strategy



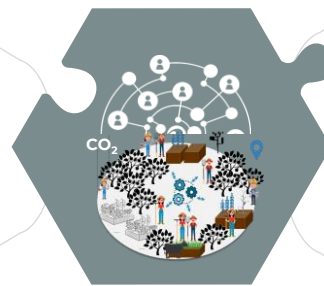
AgriLAC Resiliente:
Resilient Agrifood Innovation
Systems in Latin America and
the Caribbean

WP3-AFS development
to both mitigation and

WPI- Shaping
nutrition-sensitive
SET 'best bets'



WP2-Inclusive
digitally-
enabled agro-
advisories for
risk
management



WP4
INNOVAHUBS

Evaluation study	Where?	Research/ evaluation questions
Impact evaluation of AgriLAC's interventions thru the InnoVaHubs	Guatemala, then Honduras (baselines only)	What is the adoption and impact of the Initiative's SETs and services offered to farmers thru the InnoVaHubs?

Together with previous studies will help us assess the impact of AgriLAC

WP5-Science-informed policies, investments and institutions

Interventions

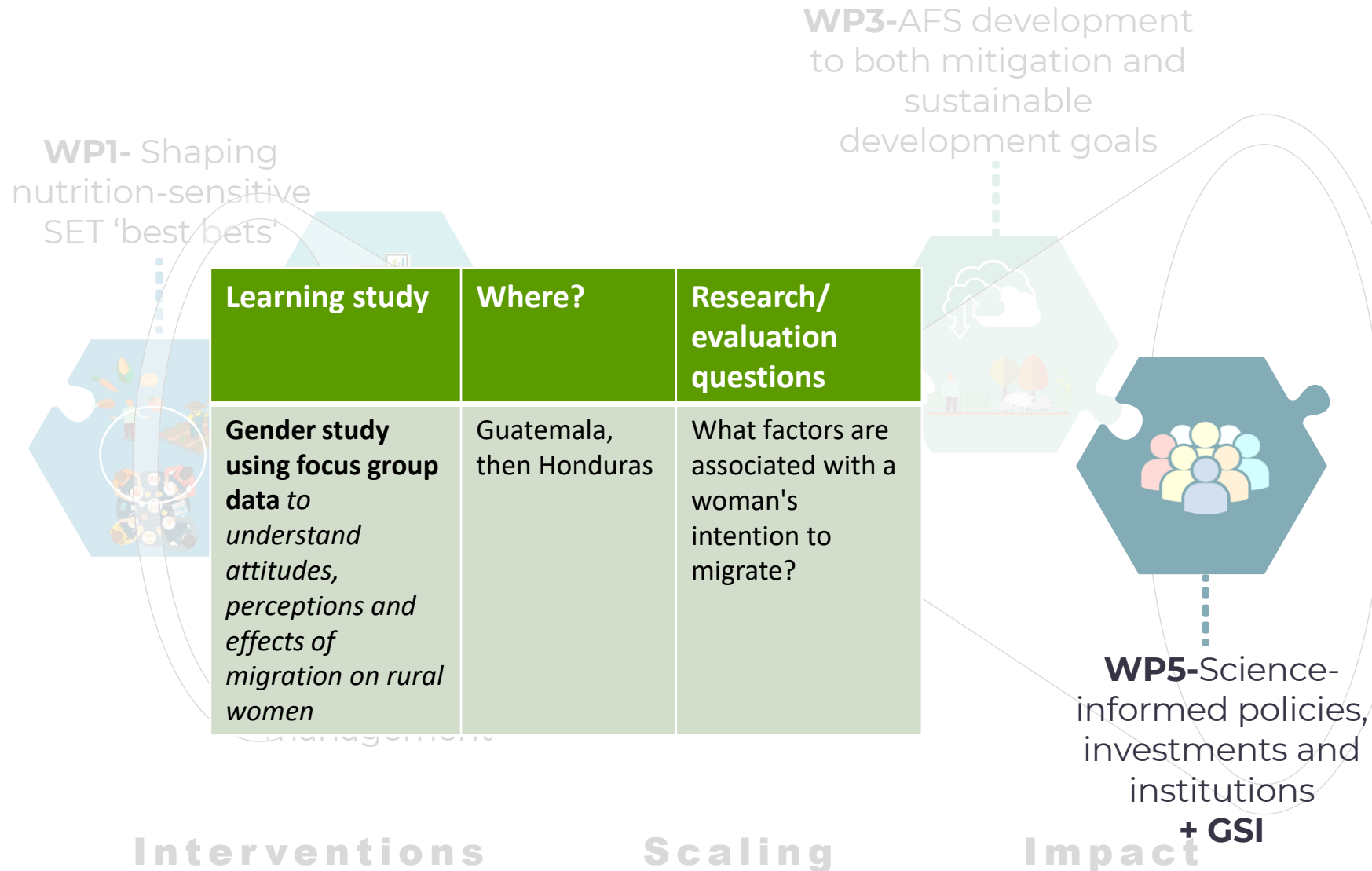
Scaling

Impact

AgriLAC evaluation strategy



AgriLAC Resiliente:
Resilient Agrifood Innovation
Systems in Latin America and
the Caribbean



Thanks a lot for your attention...
**...and we welcome your questions
and suggestions!**



AgriLAC Resiliente:
Resilient Agrifood Innovation
Systems in Latin America and
the Caribbean