

# Transapical mitral valve implantation for treatment of symptomatic mitral valve disease: a real-world multicentre experience

Mirjam G. Wild<sup>1,2†</sup>, Felix Kreidel<sup>3†</sup>, Michaela M. Hell<sup>3</sup>, Fabien Praz<sup>2</sup>, Markus Mach<sup>4</sup>, Matti Adam<sup>5</sup>, David Reineke<sup>6</sup>, Hendrik Ruge<sup>7</sup>, Sebastian Ludwig<sup>8</sup>, Lenard Conradi<sup>8</sup>, Tanja K. Rudolph<sup>9</sup>, Sabine Bleiziffer<sup>9</sup>, Jörg Kellermair<sup>10</sup>, Andreas Zierer<sup>10</sup>, Georg Nickenig<sup>11</sup>, Marcel Weber<sup>12</sup>, Anna Sonia Petronio<sup>13</sup>, Cristina Giannini<sup>13</sup>, Gry Dahle<sup>14</sup>, Kjell A. Rein<sup>14</sup>, Augustin Coisne<sup>15</sup>, André Vincentelli<sup>15</sup>, Christophe Dubois<sup>16</sup>, Alison Duncan<sup>17</sup>, Cesare Quarto<sup>18</sup>, Axel Unbehaun<sup>19</sup>, Ignacio Amat-Santos<sup>20</sup>, Javier Cobiella<sup>21</sup>, Nicolas Dumonteil<sup>22</sup>, Rodrigo Estevez-Loureiro<sup>23</sup>, Andrea Fumero<sup>24</sup>, Tobias Geisler<sup>25</sup>, Philipp Lurz<sup>26</sup>, Antonio Mangieri<sup>24</sup>, Vanessa Monivas<sup>27</sup>, Thilo Noack<sup>28</sup>, Luis Nombela Franco<sup>21</sup>, Miguel A. Pinon<sup>23</sup>, Lukas Stolz<sup>1</sup>, Didier Tchétché<sup>22</sup>, Thomas Walter<sup>29</sup>, Bernhard Unsöld<sup>30</sup>, Stephan Baldus<sup>5</sup>, Martin Andreas<sup>4</sup>, Jörg Hausleiter<sup>1\*†</sup>, and Ralph S. von Bardeleben<sup>3†</sup>, on behalf of the TENDER Investigators

<sup>1</sup>Medizinische Klinik I, LMU University Hospital, Munich, Germany; <sup>2</sup>Department of Cardiology, Inselspital University Hospital Bern, Bern, Switzerland; <sup>3</sup>Department of Cardiology, University Medical Center Mainz, Mainz, Germany; <sup>4</sup>Department of Cardiac Surgery, Medical University of Vienna, Vienna, Austria; <sup>5</sup>Department of Cardiology, University Hospital Cologne, Cologne, Germany; <sup>6</sup>Department of Cardiac Surgery, Inselspital University Hospital Bern, Bern, Switzerland; <sup>7</sup>Department of Cardiovascular Surgery, German Heart Center, Munich, Technical University Munich, Munich, Germany; <sup>8</sup>Department of Cardiology, University Hospital Hamburg, Hamburg, Germany; <sup>9</sup>Department of Cardiology, Heart- und Diabetes Center Nordrhein-Westfalen, Bad Oeynhausen, Ruhr-University Bochum, Bochum, Germany; <sup>10</sup>Department of Cardiology, Kepler University Hospital, Linz, Austria; <sup>11</sup>Department of Cardiac Surgery, University Hospital Bonn, Bonn, Germany; <sup>12</sup>Department of Cardiology, University Hospital Bonn, Bonn, Germany; <sup>13</sup>Department of Cardiology, Ospedale Universitaria Pisana, Pisa, Italy; <sup>14</sup>Department of Cardiothoracic Surgery, Oslo University Hospital, Oslo, Norway; <sup>15</sup>Université Lille, Inserm, CHU Lille, Institut Pasteur de Lille, Lille, France; <sup>16</sup>Department of Cardiovascular Medicine Acute and Interventional Cardiology, UZ Leuven, Leuven, Belgium; <sup>17</sup>Department of Cardiology, Royal Brompton Hospital, London, UK; <sup>18</sup>Department of Cardiac Surgery, Royal Brompton Hospital, London, UK; <sup>19</sup>Department of Cardiac Surgery, German Heart Center, Berlin, Germany; <sup>20</sup>Department of Cardiology, CIBER-CV, University Clinic Hospital Valladolid, Valladolid, Spain; <sup>21</sup>Department of Cardiology, Hospital Clínico San Carlos, Madrid, Spain; <sup>22</sup>Department of Cardiology, Clinique Pasteur, Toulouse, France; <sup>23</sup>Department of Cardiology, University Hospital Alvaro Cunqueiro, Vigo, Spain; <sup>24</sup>Department of Biomedical Sciences, Humanitas University, Pieve Emanuele-Milan, Italy; Humanitas Research Hospital IRCCS, Rozzano-Milan, Italy; <sup>25</sup>Department of Cardiology, University Hospital Tuebingen, Tuebingen, Germany; <sup>26</sup>Department of Cardiology, Heart Center Leipzig, Leipzig, Germany; <sup>27</sup>Department of Cardiology, Puerta de Hierro Hospital, Madrid, Spain; <sup>28</sup>University Department of Cardiac Surgery, Heart Center Leipzig, Leipzig, Germany; <sup>29</sup>Department of Cardiac Surgery, University Hospital Frankfurt, Frankfurt, Germany; and <sup>30</sup>Department of Internal Medicine II, University Hospital Regensburg, Regensburg, Germany

Received 25 November 2021; revised 27 December 2021; accepted 10 January 2022; online publish-ahead-of-print 10 February 2022

## Aims

Transcatheter mitral valve implantation (TMVI) is a new treatment option for patients with symptomatic mitral valve (MV) disease. Real-world data have not yet been reported. This study aimed to assess procedural and 30-day outcomes of TMVI in a real-world patient cohort.

## Method and results

All consecutive patients undergoing implantation of a transapically delivered self-expanding valve at 26 European centres from January 2020 to April 2021 were included in this retrospective observational registry. Among 108 surgical high-risk patients included (43% female, mean age  $75 \pm 7$  years, mean STS-PROM  $7.2 \pm 5.3\%$ ), 25% was treated

\*Corresponding author. FESC Medizinische Klinik und Poliklinik I Ludwig-Maximilians-Universität Klinikum der Universität München Marchioninistrasse 15, 81377 Munich, Germany. Tel: +49 89 440072360, Email: joerg.hausleiter@med.uni-muenchen.de

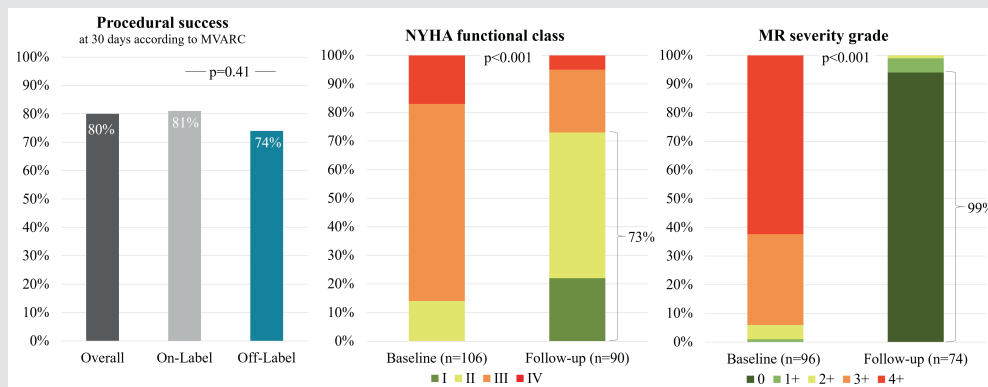
† Contributed equally to this study.

for an off-label indication (e.g. previous MV intervention or surgery, mitral stenosis, mitral annular calcification). Patients were highly symptomatic (New York Heart Association [NYHA] functional class III/IV in 86%) and mitral regurgitation (MR) was graded 3+/4+ in 95% (38% primary, 37% secondary, and 25% mixed aetiology). Technical success rate was 96%, and MR reduction to  $\leq 1+$  was achieved in all patients with successful implantation. There were two procedural deaths and 30-day all-cause mortality was 12%. At early clinical follow-up, MR reduction was sustained and there were significant reductions of pulmonary pressure (systolic pulmonary artery pressure 52 vs. 42 mmHg,  $p < 0.001$ ), and tricuspid regurgitation severity ( $p = 0.013$ ). Heart failure symptoms improved significantly (73% in NYHA class I/II,  $p < 0.001$ ). Procedural success rate according to MVARC criteria was 80% and was not different in patients treated for an off-label indication (74% vs. 81% for off- vs. on-label,  $p = 0.41$ ).

## Conclusion

In a real-world patient population, TMVI has a high technical and procedural success rate with efficient and durable MR reduction and symptomatic improvement.

## Graphical Abstract



Procedural success at 30 days (according to MVARC), functional outcome (NYHA class) and MR severity at baseline and follow-up. M R, mitral regurgitation; MVARC, Mitral Valve Academic Research Consortium; NYHA, New York Heart Association.

## Keywords

Mitral valve disease • Mitral regurgitation • Transcatheter mitral valve implantation • Tendyne

## Introduction

Transcatheter mitral valve implantation (TMVI) has been proposed as an alternative treatment for patients with symptomatic mitral valve (MV) disease ineligible or at high risk for conventional MV surgery. Treatment of the MV has long been exclusively based on surgical valve repair or replacement. However, a substantial proportion of patients could not benefit from this approach, owing to high surgical risk because of advanced age or significantly impaired left ventricular function.<sup>1</sup> Over the last years, several minimally invasive percutaneous solutions have been introduced into clinical practice to bridge this therapeutic gap and expand treatment options. They can be classified into techniques for valve repair (mitral transcatheter edge-to-edge repair [M-TEER] or annuloplasty devices) and valve replacement. While M-TEER has evolved rapidly over the last years and is already an integral part of the MV treatment armamentarium, the field of TMVI is still developing.

The Tendyne Mitral Valve System (Abbott Vascular, Roseville, MN, USA) was the first TMVI system to obtain commercial approval in Europe (CE mark) in January 2020 for use in patients with clinically relevant mitral regurgitation (MR) who are ineligible for surgery. The initial feasibility study included 100 selected patients at high or prohibitive surgical risk treated for primary or secondary MR. Despite the high-risk profile of the patient population, procedural safety and technical success were high, and 1-year survival was 72%. Symptom relief was observed in the majority of patients (New York Heart Association [NYHA] functional class I or II in 89% at 1-year follow-up), as well as significant improvement of 6-min walking distance and quality of life score.<sup>2,3</sup> The recently reported 2-year follow-up showed sustained MR reduction, lower hospitalization rate in the second year, and a 2-year all-cause mortality of 39%.<sup>4</sup>

However, many open questions remain regarding TMVI, including optimal patient selection, particularly in patients with off-label

indications for TMVI, including previous MV surgical repair or intervention, mitral annular calcification (MAC), or mitral stenosis. The aim of this retrospective study was to investigate procedural and 30-day outcomes in a non-selected real-world patient cohort treated on-label as well as off-label with the Tendyne Mitral Valve System in a multicentre setting.

## Methods

### Study design and patients

The TENDyne European experience registry study (TENDER) is a retrospective and prospective observational registry and the current data analysis included data from 26 tertiary care centres throughout Europe (Germany, Austria, Belgium, France, Italy, Spain, Norway, Switzerland, and United Kingdom). In this analysis, all consecutive patients undergoing commercial implantation of a Tendyne Mitral Valve System at the participating centres from January 2020 to April 2021 were included. Patients were symptomatic despite optimal guideline-directed medical therapy, and were deemed high-risk for conventional MV surgery, but eligible for TMVI by the local Heart Team. Anatomical suitability was assessed by transthoracic (TTE) and transesophageal echocardiography (TEE), and by cardiac computed tomography (CT). Grading of MAC in mild, moderate and severe was performed by the central screening core laboratory based on current recommendations for multi-slice CT-based analysis. Severe MAC was defined by a Guerrero score of seven points or greater.<sup>5</sup> MR was graded by an integrative echocardiographic approach according to the current guidelines of the American Society of Echocardiography from 0+ (none) to 4+ (severe).<sup>6</sup> Concomitant tricuspid regurgitation (TR) was reported on a five-grade scale from mild (1+) to torrential (5+).

Data on the patients' medical history, heart failure symptoms, medication, risk evaluation, imaging parameters, procedural data, hospitalization and 30-day follow-up were collected retrospectively in an anonymized fashion. The study was approved by the respective local ethics committees and was registered with ClinicalTrials.gov (NCT04898335).

### Endpoints and follow-up

The primary endpoint of the study was procedural success as defined by the Mitral Valve Academic Research Consortium (MVARC)<sup>7</sup> assessed at 30 days, defined as device success and absence of major device- or procedure-related serious adverse events such as death, stroke, life-threatening bleeding, major vascular or cardiac structural complications, acute kidney injury stage 2 or 3, myocardial infarction, severe heart failure and valve-related dysfunction including migration, thrombosis or other complication requiring surgery or reintervention.

Secondary endpoints included technical success according to MVARC,<sup>7</sup> all-cause and cardiovascular mortality, cerebrovascular events, myocardial infarction, bleeding complications, new-onset arrhythmia or conduction abnormality, acute kidney injury, repeated MV surgery or intervention, rehospitalization for heart failure, as well as functional status according to NYHA functional class. Major adverse cardiac events were defined as cumulative endpoint of non-fatal stroke, non-fatal myocardial infarction and cardiovascular mortality.

Clinical follow-up with concurrent TTE was usually performed at 30 days. In patients with prolonged duration of the index hospitalization, the first outpatient visit was used for evaluation of early follow-up. On-label treatment was defined according to the instructions for use

as treatment of the native MV in patients with MR  $\geq 3+$ , left ventricular ejection fraction (LVEF)  $\geq 30\%$ , left ventricular end-diastolic diameter  $\leq 70$  mm, in the absence of severe MAC, and additionally, patients with primary MR with a left ventricular end-systolic diameter  $> 30$  mm.

### The Tendyne Mitral Valve System

The Tendyne Mitral Valve System is a dedicated transapical MV implantation system consisting of a self-expanding trileaflet porcine valve prosthesis sutured to a double nitinol frame. Multiple sizes and different profiles (standard and low) are available, chosen according to individual patient's anatomy assessed by TTE, TEE and CT. The procedure is performed under general anaesthesia using a left lateral minithoracotomy. The prosthesis is placed in the native MV annulus under echocardiographic and fluoroscopic guidance and then retained by a tether connected to an epicardial pad fixed on the apex according to the counter-pull principle. The amount of tension applied to the tether is calculated individually according to the systemic pressure conditions. The prosthesis can be repositioned and retrieved if positioning is not optimal, i.e. in case of left ventricular outflow tract obstruction (LVOTO). Patients usually follow an antithrombotic management with warfarin or less frequently non-vitamin-K antagonist oral anticoagulants (NOACs) after the procedure.

### Statistical analysis

Continuous variables were expressed as mean with standard deviation and compared using a paired *t*-test. Categorical variables were displayed as counts and percentages and compared using the Wilcoxon signed rank test. Predictors for procedural success were identified using a logistic regression model. Parameters showing  $p < 0.1$  in a univariate analysis were included into the multivariate model. Results are presented as odds ratio (OR) with 95% confidence interval (CI) and *p*-value. Independent samples were compared using the Mann-Whitney U test. For all statistical tests, a two-sided *p*-value of 0.05 was defined as significance threshold. Statistical analysis was performed with IBM SPSS Statistics 25 (SPSS Inc., Chicago, IL, USA).

## Results

### Baseline characteristics

From January 2020 to April 2021, 108 consecutive patients (43% female, mean age  $75 \pm 7$  years) underwent implantation of a Tendyne bioprosthesis at 26 participating European sites. The mean European System for Cardiac Operative Risk Evaluation II score was  $8.4 \pm 6.1\%$  and the Society of Thoracic Surgeons predicted risk of mortality for MV replacement was  $7.2 \pm 5.3\%$ . Baseline characteristics of the study cohort are summarized in *Table 1*. Prevalence of coronary artery disease (63%), atrial fibrillation (70%) and chronic renal failure (78%) was high; in addition, 16% of patients had undergone previous MV surgical or transcatheter intervention. More than two thirds of patients (70%) had been previously hospitalized for heart failure and the majority of patients (86%) were in NYHA functional class III or IV.

Echocardiographic baseline data are shown in *Table 2*. Left ventricular function was impaired (LVEF  $< 50\%$ ) in 44% of patients, and echocardiographically estimated systolic pulmonary

**Table 1** Baseline clinical characteristics (n = 108)

|  |               |
|--|---------------|
| Female sex                                 | 46 (43)       |
| Age, years                                 | 75 ± 7        |
| BMI, kg/m <sup>2</sup>                     | 26 ± 5        |
| EuroSCORE II, %                            | 8.4 ± 6.1     |
| STS-PROM, %                                | 7.2 ± 5.3     |
| Comorbidities                              |               |
| Coronary artery disease                    | 68 (63)       |
| Previous myocardial infarction             | 27 (25)       |
| Previous PCI                               | 42 (39)       |
| Previous CABG                              | 32 (30)       |
| Previous TAVI                              | 24 (22)       |
| Previous AV surgery                        | 18 (17)       |
| Previous MV intervention                   | 14 (13)       |
| Previous MV surgery                        | 3 (3)         |
| History of atrial fibrillation             | 76 (70)       |
| Oral anticoagulation                       | 77 (71)       |
| COPD                                       | 19 (18)       |
| Previous stroke                            | 17 (16)       |
| GFR, ml/min                                | 46 ± 22       |
| Renal failure (GFR < 60 ml/min)            | 84 (78)       |
| Heart failure severity and treatment       |               |
| NYHA functional class                      |               |
| II   | 15 (14)       |
| III  | 73 (69)       |
| IV   | 18 (17)       |
| Previous hospitalization for heart failure | 76 (70)       |
| NT-proBNP, pg/ml                           | 9334 ± 17 333 |
| ACE-inhibitors/ARB                         | 77 (71)       |
| Beta-blocker                               | 95 (88)       |
| Diuretics                                  | 95 (88)       |
| Cardiac resynchronization therapy          | 10 (9)        |

Values are given as n (%) or mean ± standard deviation.

ACE, angiotensin-converting enzyme; ARB, angiotensin receptor blocker; AV, aortic valve; BMI, body mass index; CABG, coronary artery bypass grafting; COPD, chronic obstructive pulmonary disease; GFR, glomerular filtration rate; MV, mitral valve; NT-proBNP, N-terminal pro-B-type natriuretic peptide; NYHA, New York Heart Association; PCI, percutaneous coronary intervention; STS-PROM, Society of Thoracic Surgeons predicted risk of mortality; TAVR, transcatheter aortic valve replacement.

artery pressure was elevated (>35 mmHg) in 65%. MR was moderate-to-severe (grade 3+) or severe (grade 4+) in 95% of patients with a mean effective regurgitant orifice area (EROA) of  $0.43 \pm 0.22$  cm<sup>2</sup>. Mitral stenosis (mean transvalvular gradient >5 mmHg) with or without concomitant MR was present in 16 patients (15%). Aetiology of MV disease was classified as primary/degenerative in 38%, secondary/functional in 37%, and mixed in 25% of patients.

The mean predicted neo-left ventricular outflow tract (LVOT) assessed using valve simulation on CT images was  $418 \pm 129$  mm<sup>2</sup> (<300 mm<sup>2</sup> in 18 patients [19%]; <200 mm<sup>2</sup> in none). Baseline CT parameters are displayed in Table 2. Moderate or severe MAC was present in 19 patients (20%).

According to the instructions for use criteria, one quarter of patients (25% [n = 27]) were treated for an off-label indications (Figure 1) owing to previous MV treatment with a device in place

**Table 2** Baseline echocardiographic and computed tomography characteristics

|  |             |
|--|-------------|
| <b>Echocardiographic characteristics (n = 104)</b> |             |
| LVEF, %  | 48 ± 12     |
| LVEF 31%–49%                                       | 33 (32)     |
| LVEF ≤30%  | 12 (12)     |
| LVEDD, mm  | 56 ± 8      |
| TAPSE, mm  | 17 ± 4      |
| sPAP (estimated), mmHg                             | 53 ± 18     |
| sPAP >35 mmHg                                      | 67 (65)     |
| TR ≥3 (severe)                                     | 20 (19)     |
| MR severity  |             |
| 1+   | 1 (1)       |
| 2+   | 5 (4)       |
| 3+   | 34 (33)     |
| 4+   | 64 (62)     |
| EROA (PISA), cm <sup>2</sup>                       | 0.43 ± 0.22 |
| MR aetiology                                       |             |
| Degenerative                                       | 40 (38)     |
| Functional   | 38 (37)     |
| Mixed  | 25 (25)     |
| Mitral stenosis (transvalvular gradient >5 mmHg)   | 16 (15)     |
| Severe stenosis (>10 mmHg)                         | 3 (3)       |
| <b>CT characteristics (n = 94)</b>                 |             |
| Predicted neo-LVOT, mm <sup>2</sup>                | 418 ± 129   |
| <300 mm <sup>2</sup>                               | 18 (19)     |
| MV annular diameter, antero-posterior, mm          | 31 ± 4      |
| MV annular diameter, intercommissural, mm          | 40 ± 4      |
| MV annular perimeter, mm                           | 119 ± 17    |
| Mitral annular calcification                       |             |
| None   | 49 (51)     |
| Mild/spotty  | 28 (30)     |
| Moderate   | 12 (13)     |
| Severe   | 7 (6)       |

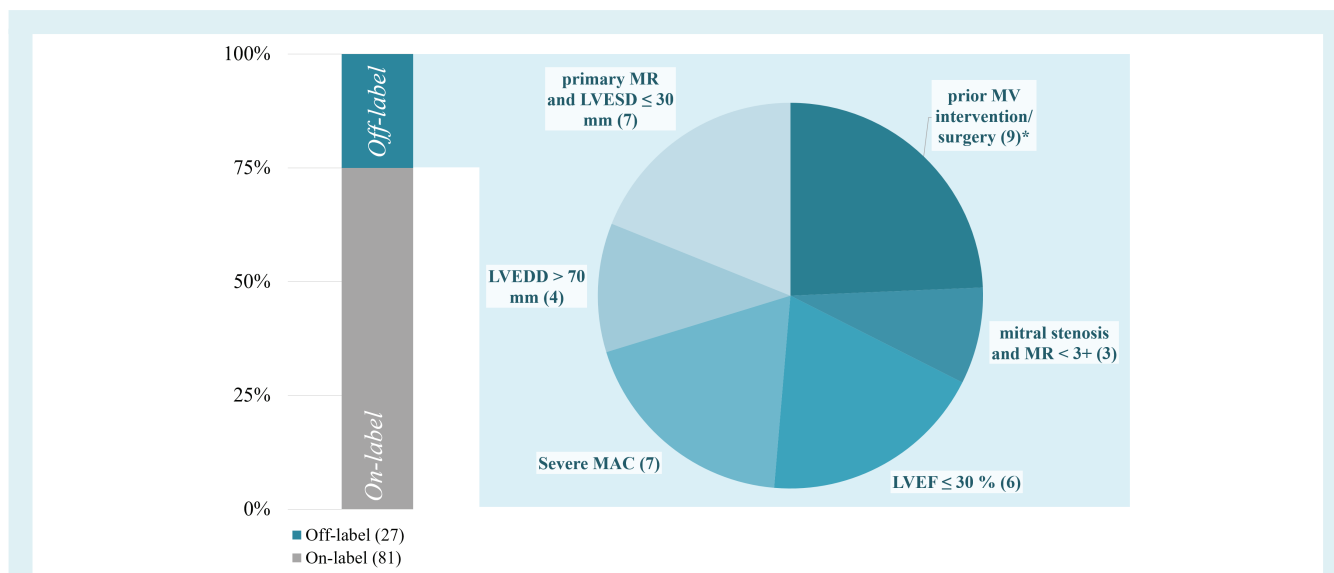
Values are given as n (%) or mean ± standard deviation.

CT, computed tomography; EROA, effective regurgitant orifice area; LVEDD, left ventricular end-diastolic diameter; LVEF, left ventricular ejection fraction; LVOT, left ventricular outflow tract; MR, mitral regurgitation; MV, mitral valve; PISA, proximal isovelocity surface area; sPAP, systolic pulmonary artery pressure; TAPSE, tricuspid annular plane systolic excursion; TR, tricuspid regurgitation.

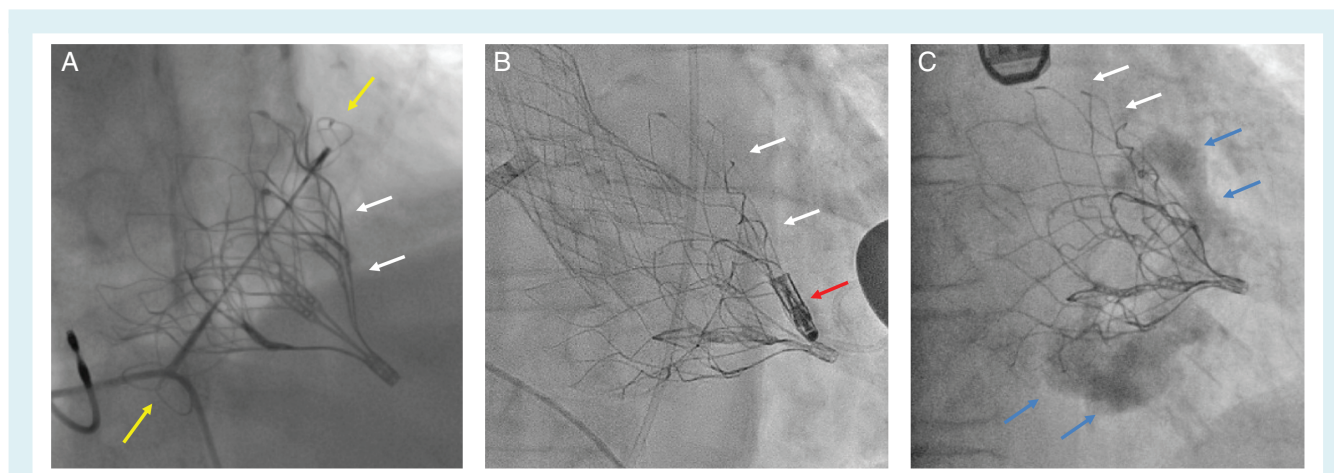
(Figure 2A,B), left ventricular function or dimension, predominant mitral stenosis or presence of severe MAC (Figure 2C). Off-label patients were more symptomatic (NYHA functional class IV in 30% vs. 13%,  $p = 0.041$ ), whereas on-label patients more frequently had a history of atrial fibrillation (75% vs. 45%,  $p = 0.015$ ) (online supplementary Table S1). The majority of patients (89% [n = 93/104]) was classified ineligible for an M-TEER-based approach. Detailed reasons are depicted in Table 3.

## Procedural and in-hospital outcomes

Procedural outcomes are summarized in Table 3. Technical success was achieved in 96% (104 patients). Half of the patients (52%) received a low-profile valve to avoid LVOTO according to the CT-based anatomical evaluation. MR at the end of the procedure was none/trace (grade 0) in 96% and ≤1+ in all patients. The



**Figure 1** On-/off-label use according to instructions for use criteria. \*Prior MV intervention/surgery with remaining device. Multiple criteria can be present in the same patient. LVEDD, left ventricular end-diastolic diameter; LVEF, left ventricular ejection fraction; LVESD, left ventricular end-systolic diameter; MAC, mitral annular calcification; MR, mitral regurgitation; MV, mitral valve.



**Figure 2** Examples of off-label cases after Tendyne implantation. (A) Previous transcatheter indirect annuloplasty device (yellow arrows). (B) Previous edge-to-edge repair (red arrow). (C) Severe mitral annular calcification.

mean transprosthetic gradient was  $3.8 \pm 1.5$  mmHg. Paravalvular leak (PVL) occurred in ten patients (9%), and was graded mild in all 8. There were four patients with valve retrieval. In two of them, one due to incomplete unfolding and one due to dislocation into the left ventricle, a successful attempt was made to reposition the same valve, whereas in another patient the valve had to be fully retrieved and a second valve implanted because of interaction with an existing annuloplasty device. In a fourth patient, the valve was fully retrieved due to haemodynamic instability following LVOTO, and the patient was converted to open-heart surgery following installation of extracorporeal membrane oxygenation. In another patient, transient LVOTO during the procedure was solved by valve repositioning. In two other patients, conversion to open-heart

surgery was performed following major apical access site bleeding and ventricular rupture, leading to intra-procedural death in both (2%).

The median length of stay on the intensive care unit was 3 days (interquartile range 1–5.3 days; five patients were directly transferred to standard care ward), whereas the median total length of hospitalization was 12 (interquartile range 9–19.5 days). In-hospital mortality was 8% ( $n = 9$ ), including the two procedural deaths. During hospital stay, two patients (2%) experienced a disabling stroke (one peri-procedural), five patients (5%) acute kidney failure requiring dialysis, and five patients (5%) presented with ventricular arrhythmia. Major bleeding events (BARC 2, 3a or 5) during the hospitalization occurred in 12 patients (11%), requiring blood

**Table 3** Procedural and in-hospital outcomes ( $n = 108$ )

| <b>Procedural</b>  |          |
|--|----------|
| M-TEER ineligibility, reason                             | 93 (89)  |
| Short leaflet with/without restricted movement           | 51 (53)  |
| Relevant calcification/s                                 | 36 (36)  |
| Small MVA  | 22 (23)  |
| Attempted M-TEER, high gradient                          | 12 (12)  |
| Previous MV intervention/surgery with device in situ     | 7 (7)    |
| Thickened leaflet/s                                      | 4 (4)    |
| Large leaflet prolapse                                   | 5 (5)    |
| Technical success  | 104 (96) |
| MR grade at the end of procedure (in implanted patients) |          |
| 0  | 101 (96) |
| 1+   | 4 (4)    |
| Paravalvular leak  |          |
| Mild   | 9 (8)    |
| Moderate   | 1 (1)    |
| Peri-procedural valve retrieval                          | 4 (4)    |
| LVOT obstruction   | 2 (2)    |
| Major apical access site complication                    | 2 (2)    |
| Conversion to open-heart surgery                         | 3 (3)    |
| Procedural mortality                                     | 2 (2)    |
| Procedure time, min                                      | 130 ± 41 |
| <b>In-hospital</b>                                       |          |
| In-hospital mortality                                    | 9 (8)    |
| Cerebrovascular event                                    | 3 (3)    |
| Major bleeding (BARC 2, 3 or 5)                          | 12 (11)  |
| Acute kidney failure                                     | 23 (21)  |
| Requiring dialysis                                       | 5 (5)    |
| Sepsis   | 11 (10)  |
| Ventricular arrhythmia                                   | 5 (5)    |
| New pacemaker implantation                               | 2 (2)    |
| Valve thrombosis   | 1 (1)    |
| Discharge ( $n = 97$ )                                   |          |
| Home   | 64 (66)  |
| Other hospital   | 11 (12)  |
| Rehabilitation facility                                  | 22 (23)  |

Values are given as  $n$  (%) or mean ± standard deviation. For M-TEER ineligibility multiple choices were possible.

BARC, Bleeding Academic Research Consortium; LVOT, left ventricular outflow tract; MR, mitral regurgitation; M-TEER, mitral transcatheter edge-to-edge repair; MV, mitral valve; MVA, mitral valve area.

transfusions in all and surgical intervention (evacuation of a thoracic haematoma) in one patient (1%). Owing to higher grade atrioventricular block, two patients (2%) underwent pacemaker implantation. One patient (1%) showed early subclinical valve thrombosis detected by an elevated mean gradient of 6 mmHg 5 days after the procedure (post-procedural mean gradient 2 mmHg) and confirmed by CT detection of a hypo-attenuated leaflet thickening. Oral anticoagulation was switched from NOAC to warfarin, and CT at follow-up showed complete resolution of the thrombus. The overall rate of in-hospital major adverse cardiac events was 9% ( $n = 10$ ).

The majority of the patients were discharged home (66% [ $n = 64$ ]) or to a rehabilitation facility (23% [ $n = 22$ ]), whereas 12% ( $n = 11$ ) were transferred to another hospital for further

**Table 4** Outcomes at 30 days ( $n = 108$ )

|   |         |
|---|---------|
| Procedural success                        | 86 (80) |
| All-cause mortality                       | 13 (12) |
| Cardiovascular mortality                  | 9 (8)   |
| Rehospitalization for heart failure       | 14 (13) |
| MV reintervention or surgery <sup>a</sup> | 0 (0)   |
| Myocardial infarction <sup>a</sup>        | 0 (0)   |
| Evidence of haemolysis <sup>a</sup>       | 2 (2)   |
| Evidence of valve thrombosis <sup>a</sup> | 0 (0)   |
| Valve migration/embolization <sup>a</sup> | 1 (1)   |
| NYHA functional class ( $n = 90$ )        |         |
| I   | 20 (22) |
| II  | 46 (51) |
| III                                       | 20 (22) |
| IV  | 4 (5)   |
| Echocardiographic outcomes ( $n = 74$ )   |         |
| LVEF, %                                   | 46 ± 14 |
| LVEDD, mm                                 | 56 ± 9  |
| MR severity                               |         |
| 0   | 68 (95) |
| 1+  | 3 (4)   |
| 2+  | 1 (1)   |
| Transvalvular gradient, mmHg              | 4 ± 2   |
| >5 mmHg                                   | 8 (11)  |
| >10 mmHg                                  | 0 (0)   |
| Paravalvular leak more than trace         | 7 (10)  |
| sPAP (estimated), mmHg                    | 40 ± 19 |
| TAPSE, mm                                 | 16 ± 5  |
| TR ≥3+ (severe)                           | 6 (8)   |

Values are given as  $n$  (%) or mean ± standard deviation.

LVEDD, left ventricular end-diastolic diameter; LVEF, left ventricular ejection fraction; MR, mitral regurgitation; MV, mitral valve; NYHA, New York Heart Association; sPAP, systolic pulmonary artery pressure; TAPSE, tricuspid annular plane systolic excursion; TR, tricuspid regurgitation.

<sup>a</sup>Events following hospital discharge.

treatment. At 30 days, one patient was still hospitalized at the intermediate unit. Most patients (80% [ $n = 76$ ]) followed an antithrombotic regime with a vitamin-K antagonist, and 20% ( $n = 19$ ) with a NOAC.

## Follow-up outcomes

Clinical follow-up at 30 days was obtained for all patients. Results are shown in Table 4. The overall rate of procedural success according to the MVARC definition<sup>7</sup> was 80% ( $n = 86$ ). Procedural success in on-label and off-label treated patients was 81% and 74%, respectively, without statistically significant difference ( $p = 0.41$ ) (Graphical Abstract). In a univariate logistic analysis, none of the baseline or echocardiographic parameters was identified as predictor for procedural success (online supplementary Table S2). Regarding a potential learning curve, we did not identify any statistical relationship between the centre's TMVI volume and the rate of procedural success.

At 30-day follow-up, there were four additional deaths. Two patients (2%) died of cardiovascular cause, and two patients (2%) of non-cardiovascular causes (COVID-19 pneumonia; urosepsis).

There was no patient with new stroke, myocardial infarction, or MV reintervention. Thus, among patients discharged, the rate of major adverse cardiac events was 3% ( $n = 3$ ), the overall 30-day mortality was 12% ( $n = 13$ ), and cardiovascular mortality 8% ( $n = 9$ ). Regarding valve function, two patients (2%) developed haemolysis, of which one occurred in the context of mild valve migration towards the atrium leading to a moderate PVL. Valve re-tensioning 3 months after the index procedure successfully resolved PVL and haemolysis. In six other patients, a mild PVL was detected without clinical relevance.

Reduction of MR was sustained in all but one patient having MR  $\leq 1+$  ( $p < 0.001$  as compared to baseline; *Graphical Abstract*). Left ventricular function and dimension remained unchanged (LVEF [59 paired values] 47% vs. 46%,  $p = 0.179$ ; left ventricular end-diastolic diameter [58 paired values] 57 vs. 56 mm,  $p = 0.310$ ), whereas pulmonary pressure (systolic pulmonary artery pressure [48 paired values] 52 vs. 42 mmHg,  $p < 0.001$ ) and TR severity (64 paired values,  $p = 0.013$ ) decreased significantly. The transprosthetic gradient was elevated  $>5$  mmHg in 8 patients (11%) at follow-up, but overall remained stable as compared to discharge ([51 paired values] 3.7 vs. 3.6 mmHg,  $p = 0.746$ ).

NYHA functional class was available for 90 patients of whom 73% were in NYHA functional class I or II ( $p < 0.001$ ; *Graphical Abstract*) at early clinical follow-up (median 50 days, interquartile range 32–79 days).

## Discussion

The salient findings of this real-world experience with transapical valve implantation for symptomatic MV disease can be summarized as follows: (i) technical success was achieved in 96% and MR was reduced to  $\leq 1+$  in all patients; (ii) mortality was 8% during hospitalization (including two intra-procedural deaths) and 12% at 30-day follow-up; (iii) functional status according to NYHA class was significantly improved at follow-up and MR reduction was sustained; (iv) procedural success at 30 days according to MVARC criteria was 80% and was not different for patients treated off-label; and (v) transmitral gradients, as well as the rate of LVOTO, and thrombotic complications were low.

Several transcatheter treatment options have emerged over the last decade to address the growing therapeutic need for MV disease. Compared to M-TEER, a well-established technique with proven safety and efficacy,<sup>8,9</sup> TMVI is a rather young, but emerging treatment option in the spectrum of percutaneous MV treatment. Specific challenges, including LVOTO, as well as thrombotic and ventricular complications have slowed its development in comparison to transcatheter aortic valve implantation. Nevertheless, possible advantages of TMVI over M-TEER are the standardized approach with predictable resolution of MR, which might translate in a better durability of MR reduction and later outcome benefits. The cumulative evidence of current TMVI techniques shows a post-procedural reduction to MR  $\leq 1+$  in 97% of patients (252/260 patients),<sup>10</sup> whereas similar MR reduction with M-TEER can only be achieved in 77%–80% of patients and is highly anatomy-dependent.<sup>11–16</sup>

There are numerous anatomical features complicating MV treatment using M-TEER like leaflet calcifications or thickening, small MV area, concomitant or predominant mitral stenosis, short or immobile posterior leaflet, and last but not least device failure or MR recurrence after previous transcatheter or surgical MV repair without option for another clip-based approach. Complex anatomy has been shown to negatively impact procedural result and prognosis after M-TEER.<sup>17</sup> In TENDER, the majority of patients was classified ineligible for an M-TEER-based approach. However, despite the anatomical challenges, MR reduction to  $\leq 1+$  was achieved in all patients and to none/trace in 96% of patients. The technical success rate of 96% in TENDER is similar to the reported data of the initial feasibility study (IFS),<sup>3</sup> although 25% of patients in this cohort have been treated off-label or would have been excluded from the IFS. Procedural success was not different in patients treated on-label (*Graphical Abstract*), and on-label treatment could not be identified as a predictor for procedural success in a logistic regression model (online supplementary *Table S2*). Similarly, patients with severe pulmonary hypertension or TR  $\geq$  grade 3+ have been excluded from the IFS, while they accounted for 14% and 19% of TENDER patients, respectively. Important baseline characteristics, and procedural as well as early clinical follow-up data of TENDER and the IFS are compared in *Table 5*. In the present study, conversion to open-heart surgery and procedural mortality was 3% and 2%, respectively, and also 30-day mortality was substantially higher (13% compared to 6% in the IFS, and also higher than hitherto real-world M-TEER experience).<sup>18</sup> This is most likely due to major differences in terms of patient selection of a real-world cohort as opposed to a highly selected patient cohort in a feasibility study. However, overall adverse events were comparably low in the TENDER cohort and in particular, there was no patient with MV reintervention, myocardial infarction and a low rate of major bleeding complications. Although a considerable proportion of patients (17%) were highly symptomatic at baseline (NYHA functional class IV), symptomatic improvement at early follow-up among survivors was comparable with 73% and 78% of patients being in functional class I or II in TENDER and the IFS, respectively.

Although the treatment of patients with MAC with the Tendyne prosthesis has been shown to be feasible and safe,<sup>19</sup> our study reports the largest cohort of MAC patients treated with the system so far. Compared to valve-in-MAC, we report a much lower rate of mortality and adverse events using a dedicated system. In particular, there was no case of conduction disturbances requiring new pacemaker implantation or relevant PVL in this subgroup of patients.

Although TMVI allows the treatment of a wider range of anatomies than M-TEER, it is noteworthy that still a considerable proportion of patients is rejected during the screening process for various reasons. Preliminary results from the CHOICE-MI study reported a rate of screening failure of 70% in nearly 750 patients included (Ali W.B., unpublished data). The availability of different valve sizes, including low-profile valves, might overcome some anatomical limitations like too small or too large MV annulus and left ventricular dimensions. However, the risk of potential LVOTO remains a challenge and might occur despite meticulous screening.<sup>20</sup> In TENDER, there was one patient with LVOTO leading to

**Table 5** Comparison of TENDER and initial feasibility study

|  | TENDER<br>(n = 108) | IFS<br>(n = 100) |
|--|---------------------|------------------|
| Female sex                             | 46 (43)             | 31 (31)          |
| Age, years                             | 75 ± 7              | 75 ± 8           |
| STS-PROM, %                            | 7.2 ± 5.3           | 7.8 ± 5.7        |
| Coronary artery disease                | 68 (63)             | 74 (74)          |
| Previous CABG                          | 32 (30)             | 47 (47)          |
| Previous MV intervention/surgery       | 17 (16)             | 0 (0)            |
| NYHA functional class IV               | 18 (17)             | 4 (4)            |
| LVEF ≤30%                              | 12 (11)             | 0 (0)            |
| MR ≥3+                                 | 97 (96)             | 99 (99)          |
| Primary aetiology of MV disease        | 35 (38)             | 11 (11)          |
| LVEDD ≥70 mm                           | 6 (6)               | 0 (0)            |
| sPAP ≥70 mmHg                          | 14 (13)             | 0 (0)            |
| TR ≥3 (severe)                         | 15 (16)             | 0 (0)            |
| Severe MAC                             | 7 (6)               | 0 (0)            |
| Procedural outcome                     |                     |                  |
| Technical success                      | 104 (96)            | 96 (96)          |
| MR none/trace <sup>a</sup>             | 103 (95)            | 87 (99)          |
| Device retrieval                       | 4 (4)               | 3 (3)            |
| Major apical access site complications | 2 (2)               | 1 (1)            |
| Conversion to open-heart surgery       | 3 (3)               | 0 (0)            |
| Procedural mortality                   | 2 (2)               | 0 (0)            |
| 30-day outcome                         |                     |                  |
| All-cause mortality                    | 14 (13)             | 6 (6)            |
| Cardiovascular mortality               | 9 (8)               | 4 (4)            |
| Disabling stroke                       | 2 (2)               | 2 (2)            |
| Major bleeding (BARC 2, 3 or 5)        | 12 (11)             | 20 (20)          |
| Myocardial infarction                  | 0 (0)               | 2 (2)            |
| Rehospitalization for heart failure    | 14 (13)             | 12 (12)          |
| MV reintervention                      | 0 (0)               | 1 (1)            |
| Device-related adverse events          | 3 (3)               | 4 (4)            |

Values are given as n (%), or mean ± standard deviation.

BARC, Bleeding Academic Research Consortium; CABG, coronary artery bypass grafting; IFS, initial feasibility study; LVEDD, left ventricular end-diastolic diameter; LVEF, left ventricular ejection fraction; MAC, mitral annular calcification; MR, mitral regurgitation; MV, mitral valve; NYHA, New York Heart Association; sPAP, systolic pulmonary artery pressure; STS-PROM, Society of Thoracic Surgeons predicted risk of mortality; TR, tricuspid regurgitation.

<sup>a</sup>Measured at the end of the procedure for TENDER and at discharge for IFS.

haemodynamic instability and conversion to open-heart surgery. New transcatheter techniques to reduce the risk of LVOTO like the intentional anterior mitral leaflet laceration (LAMPPOON)<sup>21</sup> or alcohol septal ablation for neo-LVOT modulation<sup>22</sup> could further expand the population of patients eligible for TMVI. Patients with heart failure with mildly reduced ejection fraction or reduced ejection fraction made up nearly half of the TENDER patient population. Whereas other TMVI systems rely only on annular anchoring of a valve prosthesis, and therefore mainly target primary MR patients,<sup>23</sup> the tensioning mechanism of the Tendyne Mitral Valve System also allows treatment of patients with secondary MR with very low risk of valve migration or embolization.

However, a potential limitation of many TMVI systems, including the Tendyne Mitral Valve System, is the transapical approach. This

became apparent in our cohort with two patients experiencing of major apical access site bleeding and ventricular rupture ultimately causing procedural death. Furthermore, this approach may lead to longer intensive care unit and hospital stay due to longer recovery time. However, the majority of bleeding events during hospitalization were treated conservatively in TENDER and only required a reintervention (evacuation of a thoracic haematoma) in one patient. There were no major bleeding events in the further clinical course after hospital discharge. Facing the limitations of the transapical access, the transfemoral-transseptal approach may become the default strategy in the future, but currently there is no dedicated system commercially available and clinical experience is limited. On the other hand, the transapical approach enables a precise positioning of the valve prosthesis as well as safe anchoring via apical pad.

The anticoagulation regimen remains another field of uncertainty in TMVI and is not yet defined for patients after implantation of a Tendyne prosthesis. In the present study, more than 70% of patients were previously treated with oral anticoagulation with either vitamin K antagonist or NOAC for other indications (e.g. atrial fibrillation). At discharge all patients were prescribed an oral anticoagulation, in 40% combined with an antiplatelet therapy. We observed one patient with early subclinical valve thrombosis which occurred under NOAC treatment and resolved at early follow-up under treatment with a vitamin K antagonist. In summary, our findings underline the current recommendation of anticoagulation after TMVI, although the specific medication and duration of treatment require further investigation.

## Limitations

There are inherent limitations of the present study due to its retrospective nature. Follow-up schedules and content were not pre-specified and only observational data were included. Defined study endpoints according to MVARC might be difficult to implement in this setting since due to longer hospital stay most patients do not attend a 30-day follow-up visit and the median early follow-up time period in our study was almost 2 months. Also, some clinical endpoints such as new conduction disturbances or minor bleeding events not requiring any medical intervention might not have been accurately documented compared to a prospective study.

## Conclusion

In a real-world high-risk population, primarily considered ineligible for M-TEER, TMVI results in a high technical success. Despite high anatomical variability and complexity, technical success rate was high and MR was successfully reduced to mild or even trace in all patients. At early follow-up, we observed significant symptomatic improvement and sustained MR reduction. The main TENDER results appear to be comparable to the IFS study results, despite a less selective patient inclusion and a very low TMVI site experience. TENDER demonstrates that the Tendyne system expands the catheter-based treatment options for patients who are no candidates for conventional MV surgery or M-TEER.



Finally, the results of this study might encourage expansion of TMVI indications.

## Supplementary Information

Additional supporting information may be found online in the Supporting Information section at the end of the article.

## Acknowledgements

We thank all centres and their study teams, especially the study nurses, for their effort and valuable contribution. Open access funding enabled and organized by Projekt DEAL.

**Conflict of interest:** M Andreas is proctor/speaker/consultant (Edwards, Abbott, and Medtronic) and received institutional grants (Edwards, Abbott, Medtronic, LSI). R Estévez-Loureiro has received personal fees from Abbot Vascular, Boston Scientific and Edwards Lifesciences. I Amat-Santos is proctor for Products & Features and received personal fees from Abbott Vascular. F Praz reports travel expenses from Edwards Lifesciences, Abbott Vascular, and Polares Medical. J Hausleiter has received consulting fees, speaker honoraria, and support of research projects paid to the institution from Abbott Vascular and Edwards Lifesciences. RS von Bardeleben has received consulting and speaker honoraria, as well as research project grants to the university from Abbott Vascular and Edwards Lifesciences. A Mangieri received an institutional grant from Boston Scientific and received personal fees from Concept Medical. TK Rudolph received speaker honoraria from Abbott Vascular. L Conradi is member of the advisory board of Medtronic, Abbott and BostonScientific and has received personal fees from Edwards. A Duncan is proctor/speaker for Abbott, Edwards and Medtronic. A Coisne is proctor for Abbott Vascular and speaker for Abbot Vascular and GE Healthcare. M Adam reports personal fees from Edwards and Boston Scientific, grants and personal fees from Medtronic, during the conduct of the study. S Ludwig has received travel compensation from Edwards Lifesciences. G Dahle is proctor/speaker for Abbott and speaker for Edwards. L Nombela-Franco has received consulting/proctor fees, speaker honoraria and support of research projects paid to the institution from Abbott Vascular. C Dubois is proctor/speaker/consultant for Edwards, Boston Scientific and Medtronic. The other authors have nothing to disclose.

## References

- Andalib A, Mamane S, Schiller I, Zakem A, Mylotte D, Martucci G, et al. A systematic review and meta-analysis of surgical outcomes following mitral valve surgery in octogenarians: implications for transcatheter mitral valve interventions. *EuroIntervention*. 2014;**9**:1225–34.
- Muller DWM, Farivar RS, Jansz P, Bae R, Walters D, Clarke A, et al.; Tendyne Global Feasibility Trial Investigators. Transcatheter mitral valve replacement for patients with symptomatic mitral regurgitation: a global feasibility trial. *J Am Coll Cardiol*. 2017;**69**:381–91.
- Sorajja P, Moat N, Badhwar V, Walters D, Paone G, Betha B, et al. Initial feasibility study of a new transcatheter mitral prosthesis: the first 100 patients. *J Am Coll Cardiol*. 2019;**73**:1250–60.
- Muller DWM, Sorajja P, Duncan A, Betha B, Dahle G, Grayburn P, et al. 2-Year outcomes of transcatheter mitral valve replacement in patients with severe symptomatic mitral regurgitation. *J Am Coll Cardiol*. 2021;**78**:1847–59.
- Guerrero M, Wang DD, Pursnani A, Eleid M, Khaliq O, Urena M, et al. A cardiac computed tomography-based score to categorize mitral annular calcification severity and predict valve embolization. *JACC Cardiovasc Imaging*. 2020;**13**:1945–57.
- Zoghbi WA, Adams D, Bonow RO, Enriquez-Sarano M, Foster E, Grayburn PA, et al. Recommendations for noninvasive evaluation of native valvular regurgitation: a report from the American Society of Echocardiography developed in collaboration with the Society for Cardiovascular Magnetic Resonance. *J Am Soc Echocardiogr*. 2017;**30**:303–71.
- Stone GVV, Adams DH, Abraham WT, Kappetein AP, Genereux P, Vranckx P, et al.; Mitral Valve Academic Research Consortium (MVARC). Clinical trial design principles and endpoint definitions for transcatheter mitral valve repair and replacement: Part 2: Endpoint definitions: a consensus document from the Mitral Valve Academic Research Consortium. *J Am Coll Cardiol*. 2015;**66**:308–21.
- Stone GVV, Lindenfeld J, Abraham WT, Kar S, Lim DS, Mishell JM, et al.; COAPT Investigators. Transcatheter mitral-valve repair in patients with heart failure. *N Engl J Med*. 2018;**379**:2307–18.
- Webb JG, Hensey M, Szerlip M, Schafer U, Cohen GN, Kar S, et al. 1-Year outcomes for transcatheter repair in patients with mitral regurgitation from the CLASP study. *JACC Cardiovasc Interv*. 2020;**13**:2344–57.
- Alperi A, Granada JF, Bernier M, Dagenais F, Rodes-Cabau J. Current status and future prospects of transcatheter mitral valve replacement: JACC state-of-the-art review. *J Am Coll Cardiol*. 2021;**77**:3058–78.
- Lim DS, Kar S, Spargias K, Kipperman RM, O'Neill WW, Ng MKC, et al. Transcatheter valve repair for patients with mitral regurgitation: 30-day results of the CLASP study. *JACC Cardiovasc Interv*. 2019;**12**:1369–78.
- Praz F, Braun D, Unterhuber M, Spirito A, Orban M, Brugger N, et al. Edge-to-edge mitral valve repair with extended clip arms: early experience from a multicenter observational study. *JACC Cardiovasc Interv*. 2019;**12**:1356–65.
- Hausleiter J. Early procedural outcomes from subjects treated with next-generation MitraClip (NTR/XTR) system: initial observations from the global EXPAND study. PCR online, 2019. <https://www.pconline.com/Cases-resources-images/Resources/Course-videos-slides/2019/Trials-and-registries-Tricuspid-and-mitral-valve-repair> (20 January 2022).
- Obadia JF, Messika-Zeitoun D, Leurent G, lung B, Bonnet G, Piriou N, et al.; MITRA-FR Investigators. Percutaneous repair or medical treatment for secondary mitral regurgitation. *N Engl J Med*. 2018;**379**:2297–306.
- Praz F, Winkel MG, Fam NP. A new age for transcatheter mitral valve repair: the complexity of choice. *JACC Cardiovasc Interv*. 2020;**13**:2415–7.
- Higuchi S, Orban M, Stolz L, Karam N, Praz F, Kalbacher D, et al. Impact of residual mitral regurgitation on survival after transcatheter edge-to-edge repair for secondary mitral regurgitation. *JACC Cardiovasc Interv*. 2021;**14**:1243–53.
- Lesevic H, Karl M, Braun D, Barthel P, Orban M, Pache J, et al. Long-term outcomes after MitraClip implantation according to the presence or absence of EVEREST inclusion criteria. *Am J Cardiol*. 2017;**119**:1255–61.
- Keller K, Hobohm L, Schmidtman I, Munzel T, Baldus S, von Bardeleben RS. Centre procedural volume and adverse in-hospital outcomes in patients undergoing percutaneous transvenous edge-to-edge mitral valve repair using MitraClip® in Germany. *Eur J Heart Fail*. 2021;**23**:1380–9.
- Sorajja P, Gossli M, Babaliaros V, Rizik D, Conradi L, Bae R, et al. Novel transcatheter mitral valve prosthesis for patients with severe mitral annular calcification. *J Am Coll Cardiol*. 2019;**74**:1431–40.
- Reineke D, Brugger N, Wild MG, Mihalj M, Madhkour R, Terbeck S, et al. Hemolysis after transcatheter mitral valve implantation resolved by valve retensioning. *JACC Case Rep*. 2021;**3**:864–70.
- Khan JM, Babaliaros VC, Greenbaum AB, Foerster JR, Yazdani S, McCabe JM, et al. Anterior leaflet laceration to prevent ventricular outflow tract obstruction during transcatheter mitral valve replacement. *J Am Coll Cardiol*. 2019;**73**:2521–34.
- Ukaigwe A, Gossli M, Cavalante J, Olson S, Sorajja P. Neo-left ventricular outflow tract modification with alcohol septal ablation before Tendyne transcatheter mitral valve replacement. *JACC Cardiovasc Interv*. 2020;**13**:2078–80.
- Zahr F, Song HK, Chadderdon SM, Gada H, Mumtaz M, Byrne T, et al. Thirty-day outcomes following transfemoral transseptal transcatheter mitral valve replacement: Intrepid TMVR early feasibility study results. *JACC Cardiovasc Interv*. 2021;**15**:80–9.