

SYSTEMATIC REVIEW

Open Access



Exercise Mode in Heart Failure: A Systematic Review and Meta-Analysis

Jamie Edwards¹ , Nesan Shanmugam², Robin Ray², Fadi Jouhra², Jennifer Mancio², Jonathan Wiles¹, Anna Marciniak², Rajan Sharma² and Jamie O'Driscoll^{1,2*}

Abstract

Background Optimising exercise prescription in heart failure (HF) with a preserved (HFpEF) or reduced (HFrEF) ejection fraction is clinically important. As such, the aim of this meta-analysis was to compare traditional moderate intensity training (MIT) against combined aerobic and resistance training (CT) and high-intensity interval training (HIIT) for improving aerobic capacity (VO_2), as well as other clinically relevant parameters.

Methods A comprehensive systematic search was performed to identify randomised controlled trials published between 1990 and May 2021. Research trials reporting the effects of MIT against CT or HIIT on peak VO_2 in HFpEF or HFrEF were considered. Left-ventricular ejection fraction (LVEF) and various markers of diastolic function were also analysed.

Results Seventeen studies were included in the final analysis, 4 of which compared MIT against CT and 13 compared MIT against HIIT. There were no significant differences between MIT and CT for peak VO_2 (weighted mean difference [WMD]: $0.521 \text{ ml min}^{-1} \text{ kg}^{-1}$, [95% CI] = -0.7 to 1.8 , $P_{\text{fixed}} = 0.412$) or LVEF (WMD: -1.129% , [95% CI] = -3.8 to 1.5 , $P_{\text{fixed}} = 0.408$). However, HIIT was significantly more effective than MIT at improving peak VO_2 (WMD: $1.62 \text{ ml min}^{-1} \text{ kg}^{-1}$, [95% CI] = 0.6 – 2.6 , $P_{\text{random}} = 0.002$) and LVEF (WMD: 3.24% , [95% CI] = 1.7 – 4.8 , $P_{\text{random}} < 0.001$) in HF patients. When dichotomized by HF phenotype, HIIT remained significantly more effective than MIT in all analyses except for peak VO_2 in HFpEF.

Conclusions HIIT is significantly more effective than MIT for improving peak VO_2 and LVEF in HF patients. With the exception of peak VO_2 in HFpEF, these findings remain consistent in both phenotypes. Separately, there is no difference in peak VO_2 and LVEF change following MIT or CT, suggesting that the addition of resistance exercise does not inhibit aerobic adaptations in HF.

Keywords Heart failure, HFpEF, HFrEF, Exercise training, Exercise mode

*Correspondence:

Jamie O'Driscoll
jamie.odriscoll@canterbury.ac.uk

¹ School of Psychology and Life Sciences, Canterbury Christ Church University, North Holmes Road, Canterbury, Kent CT1 1 QU, UK

² Department of Cardiology, St George's Healthcare NHS Trust, Blackshaw Road, Tooting, London SW17 0QT, UK



© The Author(s) 2023. **Open Access** This article is licensed under a Creative Commons Attribution 4.0 International License, which permits use, sharing, adaptation, distribution and reproduction in any medium or format, as long as you give appropriate credit to the original author(s) and the source, provide a link to the Creative Commons licence, and indicate if changes were made. The images or other third party material in this article are included in the article's Creative Commons licence, unless indicated otherwise in a credit line to the material. If material is not included in the article's Creative Commons licence and your intended use is not permitted by statutory regulation or exceeds the permitted use, you will need to obtain permission directly from the copyright holder. To view a copy of this licence, visit <http://creativecommons.org/licenses/by/4.0/>.

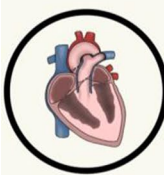
Graphical Abstract

SPORTS MEDICINE - OPEN

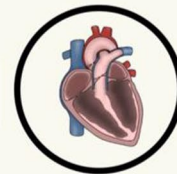
OPEN ACCESS PEER-REVIEWED INFOGRAPHIC

Exercise mode in heart failure: A systematic review and meta-analysis.

Edwards, J.J, Shanmugam, N., Ray, R., Jouhra, F., Mancio, J., Wiles, J.D., Marciniak, A., Sharma, R., O'Driscoll, J.M.



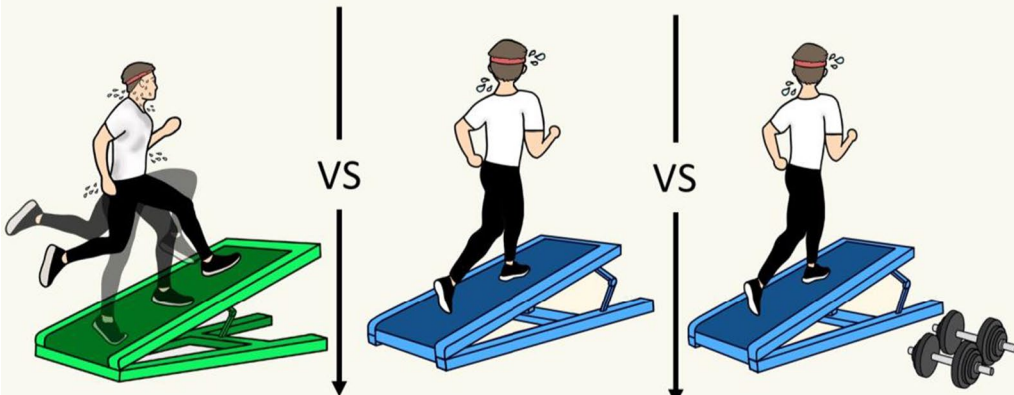
Exercise Training in Heart Failure



High-Intensity Interval Training

Traditional Moderate Training

Combined Moderate and Resistance Training



Favours HIIT:
• Peak VO₂
• LVEF

No Difference:
• Peak VO₂
• LVEF

Abbreviations: VO₂, Volume oxygen uptake; LVEF, Left ventricular ejection fraction.



This graphical abstract represents the opinions of the authors. For a full list of declarations, including funding and author disclosure statements, please see the full text online. © The authors, CC-BY 2022.

Key Points

- High-intensity interval training (HIIT) is more effective than moderate intensity training (MIT) for improving cardiorespiratory fitness and cardiac function in heart failure patients.
- There is no difference in cardiorespiratory fitness and cardiac function between MIT alone, and in combination with dynamic resistance training (CT). This suggests that dynamic resistance exercise does not negatively affect cardiorespiratory adaptations.

Introduction

Exercise training (ET) is well established as an effective interventional strategy in heart failure (HF), constituting a major component of cardiac rehabilitation practices across clinics globally [1, 2]. Specifically, ET has been consistently demonstrated to produce significant improvements in various clinically important parameters, including aerobic capacity (VO_2) [3], quality of life [3], and even cardiac function [4] and structure [5]. These adaptations have been demonstrated to translate into improvements in clinical outcomes, with significant reductions in all-cause and cardiovascular hospitalisation and, although the data remain more uncertain, all-cause mortality [6, 7]. Thus, given the pivotal role of ET in HF, establishing optimal exercise prescription practices with consideration of HF phenotype is essential.

Current exercise-based cardiac rehabilitation programmes typically employ low to moderate intensity aerobic training (MIT) regimes. Indeed, a plethora of research trials have demonstrated the effectiveness of MIT in HF; however, outpatient adoption and adherence rates are low, especially amongst women [6, 8, 9]. Moreover, very little research has investigated the comparative efficacy of MIT alone against MIT combined with resistance training (CT), which remains an important comparison to further optimise exercise prescription in HF. As discussed in the current guidelines [10], the addition of resistance training is important for the maintenance of muscle mass in an ageing HF population vulnerable to sarcopenia; however, whether this addition impacts adaptations in VO_2 is not entirely clear.

There is also growing clinical interest in the application of high-intensity interval training (HIIT), a time-efficient and well-received exercise mode in cardiac rehabilitation settings, which appears to produce similar, or greater benefits to that observed following MIT [11, 12]. However, the current comparative literature between MIT and HIIT in HF overlooks the fundamental clinical differences between the two broad HF phenotypes, heart failure with a reduced (HFrEF) or preserved (HFpEF)

ejection fraction. As such, there is poor understanding of the different effects of MIT and HIIT across the same parameters for both HFrEF and HFpEF [11].

As such, we aimed to perform a systematic review and meta-analysis of randomised controlled trials to establish the optimal exercise prescription in HF, comparing the effects of MIT against CT and HIIT on peak VO_2 and various other clinically relevant parameters. In addition, we aimed to perform the first sub-group analysis on the differences in efficacy between MIT and HIIT in HFrEF and HFpEF separately.

Methods

This systematic review and meta-analysis was performed in accordance with the PRISMA guidelines [13]. PubMed (Medline), the Cochrane library and Web of Science were systematically searched for research trials reporting the effects of MIT against CT or HIIT on peak VO_2 in HFpEF or HFrEF. Trials published between 1990 and May 2021 were considered. The search strategy included combinations of the relevant medical subject heading (MeSH) terms, text words and word variants for exercise, physical activity, cardiac rehabilitation, heart failure, HFpEF, HFrEF, diastolic heart failure, preserved ejection fraction and reduced ejection fraction, with the Boolean search terms 'OR' and 'AND' (see Additional file 1). Reference lists of relevant articles and reviews were hand searched for additional reports and where relevant, corresponding authors were contacted to ascertain whether non-published data were available or in the pre-print stage.

Study Eligibility, Outcome Measures and Data Collection

Randomised controlled trials of adults (≥ 18 years) reporting peak VO_2 following two separate exercise interventions with an eligibility criterion of 4 weeks to 6 months in duration were considered. Secondary outcomes of interest were: left ventricular ejection fraction (LVEF), end-diastolic volume (EDV), the ratio of early to late diastolic peak blood flow velocity (E/a ratio) and the ratio between early mitral inflow velocity and early mitral annular velocity (E/e'). Studies that did not report data for both separate exercise interventions were excluded. MIT and HIIT are defined according to the EXPERT tool [14]. One seemingly suitable study was excluded due to not meeting the intensity thresholds to be considered HIIT [15], one did not categorically fit the criteria for MIT [16], and another included concurrent exercise modes with the potential for confounding effects [17]. To be classified as HIIT, the intensity metrics were required to fall within the categories of 'High-intensity, vigorous effort' or 'Very hard effort' in the EXPERT tool [14]. CT was determined as MIT performed concurrent to any resistance training intervention. HFpEF and HFrEF are

defined according to the respective studies individually, and HF severity according to the New York Heart Association (NYHA) classifications. We defined an immediate adverse event as an acute event that occurred during, or immediately after, an exercise session, excluding any later follow-up event data.

Two authors (JE and JOD) separately screened all papers for eligibility. Any inconsistency or confliction was discussed by the researchers and a consensus was reached. All studies were initially screened by title and abstract, and subsequently by full text if they met the relevant inclusion criteria. Following study recruitment, the relevant data of all included studies were extracted independently by the two researchers for synthesis. If more than one study was published for the same cohort, the study containing the most comprehensive and relevant information was included to avoid overlapping populations. Authors were contacted when the methodology indicated the collection of data, but such data were not reported.

Study Quality Assessment

Study quality and risk of bias was evaluated using the TESTEX scale [18]. TESTEX is a validated 15-point (12 item) tool designed for the specific application to exercise training studies. Two researchers (JE and JOD) independently scored all eligible articles and any disputes in the quality analyses were resolved via consensus. Detailed TESTEX scoring for each study can be found in the Additional file 1 (Table S1 and Table S2).

Statistical Analysis

All statistical analysis was performed using the statistical software Comprehensive Meta-Analysis (Comprehensive Meta-Analysis version 3, Biostat, Englewood, NJ, USA). As all outcomes were measured on the same scale across all studies, weighted mean difference (WMD) with 95% confidence intervals (CI) was calculated. Effect sizes were calculated based on the WMD (change score) between baseline and follow-up measures to establish the comparative efficacy between MIT and CT, and MIT and HIIT [19]. Analyses of effect sizes were conducted for HF as a collective and subsequently dichotomised into HFpEF and HFrEF subgroups if data allowed. Multiple meta-regression analyses were also conducted to ascertain if any effect moderator variables influenced the primary outcomes. The moderators assessed independently were: age, body mass index (BMI) and intervention duration (weeks). Statistical inter-study heterogeneity was tested alongside the pooled analysis and reported as the I^2 statistic. A significance threshold of >40% was applied to the I^2 statistic [20]. Once past this threshold, random-effects analysis was applied and a post hoc Egger's test

was performed to assess the presence of publication bias [21]. Sensitivity analysis was performed for the primary outcomes using the in-built CMA 'one-study removed' analysis method, which did not significantly influence any of the overall effect sizes. Statistical significance of the pooled analysis was determined with a P value of <0.05 and a Z -value of >2.

Results

Figure 1 represents the PRISMA systematic review flow-chart. Following all exclusions, 17 studies were analysed, 4 of which compared MIT against CT (150 participants) and 13 compared MIT against HIIT (565 participants). Detailed TESTEX scoring of each study can be found in the Additional file 1 (Tables S1 and S2). Study training and participant characteristics for MIT versus CT and MIT versus HIIT can be found in Additional file 1: Tables S1, S2, S3 and S4, respectively.

While we found that some large studies (Ellingson et al. [22] and Mueller et al. [23]) reported higher adverse events during the 12-month follow-up in HIIT patients versus MIT patients, we found minimal immediate adverse events and zero deaths/serious events during or following an ET session. The acute safety data of MIT, CT and HIIT in both HFrEF and HFpEF are presented in Tables 1 and 2.

MIT versus CT

Figure 2 details the WMD in peak VO_2 change following MIT and CT. There was no significant difference between the two modalities for peak VO_2 change (WMD: $0.521 \text{ ml min}^{-1} \text{ kg}^{-1}$, [95% CI] = -0.7 to 1.8 , $P_{\text{fixed}} = 0.412$). There was no significant heterogeneity ($P = 0.885$, $I^2 = 0\%$) or evidence of publication bias ($P = 0.869$, Additional file 1: Fig. S2). Due to insufficient HFpEF data, dichotomization by phenotype was not statistically possible. Furthermore, there was no significant difference between MIT and CT for LVEF (WMD: -1.129% , [95% CI] = -3.8 to 1.5 , $P_{\text{fixed}} = 0.408$). There were insufficient data for any further secondary outcome analysis.

MIT versus HIIT

Figure 3 presents the WMD in peak VO_2 change following MIT and HIIT. HIIT produced improvements in peak VO_2 to a significantly greater extent than did MIT (WMD: $1.62 \text{ ml min}^{-1} \text{ kg}^{-1}$, [95% CI] = 0.6 – 2.6 , $P_{\text{random}} = 0.002$). There was statistically significant heterogeneity ($P < 0.001$, $I^2 = 72.1\%$), and the post hoc Egger's test was statistically significant ($P = 0.004$), suggesting publication bias (Additional file 1: Fig. S1). When dichotomized by HF phenotype, HIIT was significantly more effective than MIT in HFrEF (WMD:

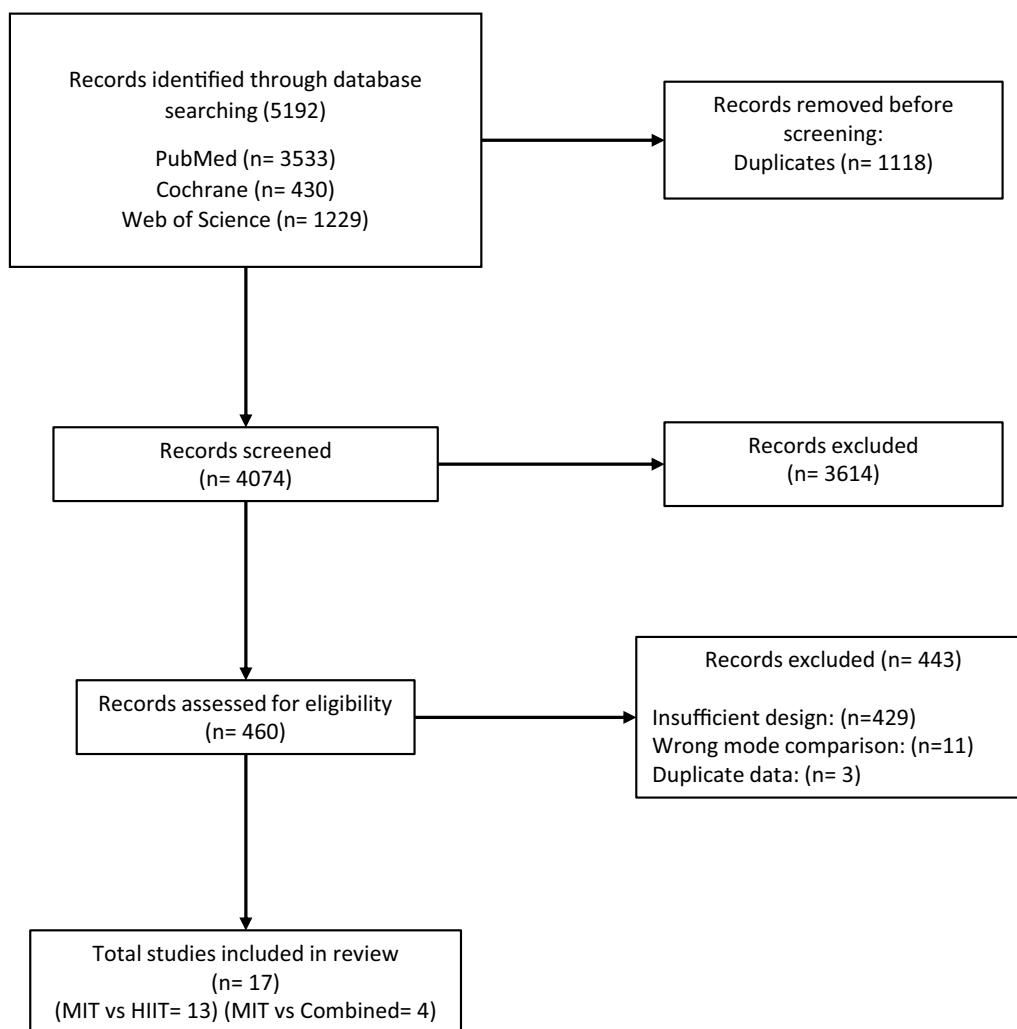


Fig. 1 PRISMA systematic review and meta-analysis flowchart. MIT, moderate intensity training; HIIT, high-intensity interval training

1.88 ml·min⁻¹ kg⁻¹, [95% CI] = 0.8–2.9, $P_{\text{random}} = 0.001$), but there was no significant difference observed in HFpEF (WMD: 0.44 ml min⁻¹ kg⁻¹, [95% CI] = -0.8 to 1.7, $P_{\text{fixed}} = 0.485$).

HIIT also produced increases in LVEF to a significantly greater extent than did MIT (WMD: 3.24%, [95% CI] = 1.7–4.8, $P_{\text{random}} < 0.001$). This statistical significance was consistent across both HFrEF (WMD: 3.88%, [95% CI] = 1.6–6.2, $P_{\text{random}} < 0.001$) and HFpEF (WMD: 2.3%, [95% CI] = 0.8–3.8, $P_{\text{fixed}} = 0.002$) separately. There was no significant difference between MIT and HIIT for EDV, E/a or E/e' .

Moderator Analysis

The MIT versus CT meta-regression also demonstrated no significant effect of age ($B = -0.0468$, $P = 0.7644$ and $B = 0.0818$, $P = 0.6530$) or BMI ($B = -0.3267$,

$P = -0.5457$ and $B = -0.2262$, $P = 0.4840$), with insufficient intervention duration data to perform such analysis.

The MIT versus HIIT meta-regression analysis demonstrated no significant effect of intervention duration ($B = -0.018$, $P = 0.700$), age (MIT group: $B = -0.0705$, $P = 0.6229$ and HIIT group: $B = 0.1294$, $P = 0.3439$) or BMI (BMI: $B = -0.0308$, $P = 0.8200$ and $B = -0.0920$, $P = 0.5196$).

Discussion

For the purpose of optimising exercise prescription in HF, this meta-analysis compared the efficacy of MIT against CT and HIIT separately for improving peak VO_2 as well as other various clinically relevant parameters. Importantly, our findings show that HIIT is significantly more effective than MIT for improving peak VO_2 and LVEF in HF patients. When the analysis was dichotomized by HF

Table 1 MIT versus CT training characteristics

Study	Groups	Design	Country	Exercise training mode	Exercise Intensity	Exercise frequency (days p/w)	Intervention duration (weeks)	Adverse events
Laoutaris et al. [24]	MIT	RCT	Greece	Aerobic training (cycling)	70–80% MHR	3	12	0
	Combined	RCT	Greece	Combined aerobic (cycling) and dynamic RT	Aerobic (30 min) = 70–80% MHR, RT (15 min) = 50% 1RM, IMT (20 min) = 60% SPImax	3	12	0
Beckers et al. [25]	MIT	RCT	Belgium	Aerobic (treadmill, bicycle, stair, arm-cycling, half recumbent or recline cycling)	90% HR achieved at VT2 (60 min)	3	6 months	0
	Combined	RCT	Belgium	Aerobic (treadmill, bicycle, stair, arm-cycling, half recumbent or recline cycling) and dynamic RT	50–60% 1RM (23–40 min) and 90% HR achieved at VT2 (10–37 min)	3	6 months	0
Mandic et al. [26]	MIT	RCT	New Zealand	Aerobic training (treadmill and cycling)	50–70% HRR (30 min)	3	12	0
	Combined	RCT	New Zealand	Aerobic training (treadmill and cycling) and dynamic RT (chest press, bicep curl, etc.) on weight machines	50–70% HRR (30 min), 50–70% 1RM	3	12	1 (AF episode)
Servantes et al. [27]	MIT	RCT	Brazil	Aerobic (walking)	HR corresponding to anaerobic threshold	3–4	3 months	0
	Combined	RCT	Brazil	MIT (walking) and strength training (upper and lower limb)	30–40% 1RM	3–4	3 months	0

MIT, Moderate intensity training; RCT, randomised controlled trial; RT, resistance training; MHR, maximal heart rate; 1RM, 1-repetition maximum; HRR, heart rate reserve; AF, atrial fibrillation

phenotype, HIIT was significantly more effective than MIT for improving peak VO_2 and LVEF in HFrEF, while LVEF, but not peak VO_2 , was significant in HFpEF. Separately, we found no significant differences between MIT and CT for peak VO_2 or LVEF, suggesting that the application of resistance training in HF patients has no detrimental effects on aerobic adaptations following MIT.

Peak VO_2 is a key prognostic marker in HF, with previous research reporting a 6% increase in peak VO_2 to be associated with an 8% lower risk of HF hospitalisation and a 7% reduced risk of all-cause mortality [39]. While both MIT and HIIT appear effective, our findings indicate HIIT to be the superior mode in enhancing such parameter in HF, which may carry greater prognostic

implications. Interestingly, while this difference remained consistent in HFrEF-only papers, it was not found in the HFpEF analysis, as primarily driven by the recent findings of Mueller et al. [23]. The reason for these contrasting changes is unclear, but may be due to a combination of varying exercise training characteristics and adherence rates, as well as differing underlying physiological mechanisms driving changes in peak VO_2 in HFrEF and HFpEF. While there are certainly central and peripheral contributions in both phenotypes, in HFpEF patients, chronotropic incompetence and impairments in oxygen extraction and utilisation have been previously considered the primary drivers of exercise intolerance [40], whereas HFrEF is expected to exhibit larger reductions

Table 2 MIT versus HIIT training characteristics

Study	Groups	Design	Country	Exercise training mode	Exercise intensity	Exercise frequency (days p/w)	Intervention duration (weeks)	Adverse events
Iellamo et al. [28]	MIT	RCT	Italy	Aerobic (uphill treadmill walking)	45–60% HRR (30–45 min)	2–5	12	0
	HIIT	RCT	Italy	Aerobic (uphill treadmill walking)	75–80% HRR (4 × 4 min intervals, by 2–4 times)	2–5	12	0
Ellingsen et al. [22]	MIT	RCT	Norway (9 centres)	MIT (treadmill or cycling)	60–70% MHR (47 min)	3	12	NR
	HIIT	RCT	Norway (9 centres)	HIIT (treadmill or cycling)	90–95% MHR (4 × 4 min) 38 min session	3	12	NR
Iellamo et al. [29]	MIT	RCT	Italy	Aerobic (uphill treadmill walking)	45–60% HRR (30–45 min)	3	12	0
	HIIT	RCT	Italy	Aerobic (uphill treadmill walking)	75–80% HRR (4 × 4 min intervals, by 2–4 times)	3	12	0
Besnier et al. [30]	MIT	RCT	France	MIT (cycling)	60% peak power output (30 min)	5	3.5	0
	HIIT	RCT	France	HIIT (cycling)	100% peak power output (Two 8-min blocks of 30 s max output and 30 s active rest)	5	3.5	0
Koufaki et al. [31]	MIT	RCT	UK	MIT (cycling)	40–60% peak VO ₂ (21–40 min)	3	24	1 (anxiety attack)
	HIIT	RCT	UK	HIIT (cycling)	100% peak power output (2 × 15 min bouts of 30 s max output with 1 min active rest between)	3	24	1 (syncope)
Wisløff et al. [32]	MIT	RCT	Norway	moderate continuous—uphill walking	70–75% peak HR	3	12	0
	HIIT	RCT	Norway	Aerobic interval training—uphill walking (4 × 4-min intervals)	90–95% peak HR	3	12	0
Dimopoulos et al. [33]	MIT	RCT	Greece	MIT (cycling)	50% WR peak (40 min)	3	12	NR
	HIIT	RCT	Greece	HIIT (cycling)	100% WR peak (30 s intervals and 30s rest for 40 min)	3	12	NR
Freysin et al. [34]	MIT	RCT	France	MIT (cycling and treadmill)	HR corresponding VT1 (45 min)	5	8	0
	HIIT	RCT	France	AIT (cycling)	50% steep ramp test (30 s intervals for 40 min)	5	8	0

Table 2 (continued)

Study	Groups	Design	Country	Exercise training mode	Exercise intensity	Exercise frequency (days p/w)	Intervention duration (weeks)	Adverse events
Fu et al. [35]	MIT	RCT	Taiwan	MIT (cycling)	60% HRR/VO ₂ peak	3	12	NR
	HIIT	RCT	Taiwan	HIIT (cycling)	80% HRR/VO ₂ peak	3	12	NR
Ulbrich et al. [36]	MIT	RCT	Brazil	MIT (uphill walking)	75% peak HR	3	12	0
	HIIT	RCT	Brazil	HIIT (uphill walking)	95% peak HR (3 min intervals with 3 min active recovery, 4–6 times)	3	12	0
Donelli da Silveira et al. [37]	MIT	RCT	Brazil	MIT (treadmill)	50–60% peak VO ₂	3	12	0
	HIIT	RCT	Brazil	HIIT (treadmill)	80–90% peak VO ₂	3	12	0
Angadi et al. [38]	MIT	RCT	USA	MIT (treadmill)	60–70% peak HR	3	4	0
	HIIT	RCT	USA	HIIT (treadmill)	80–85% peak HR	3	4	0
Mueller et al. [23]	MIT	RCT	Germany	HIIT (cycling)	80–90% HRR	5	12	NR
	HIIT	RCT	Germany	Aerobic (cycling)	35–50% HRR	3	12	NR

HIIT, High-intensity interval training; MIT, moderate intensity training; RCT, randomised controlled trial; MHR, maximal heart rate; HRR, heart rate reserve; WR, work rate; VO₂, volume oxygen

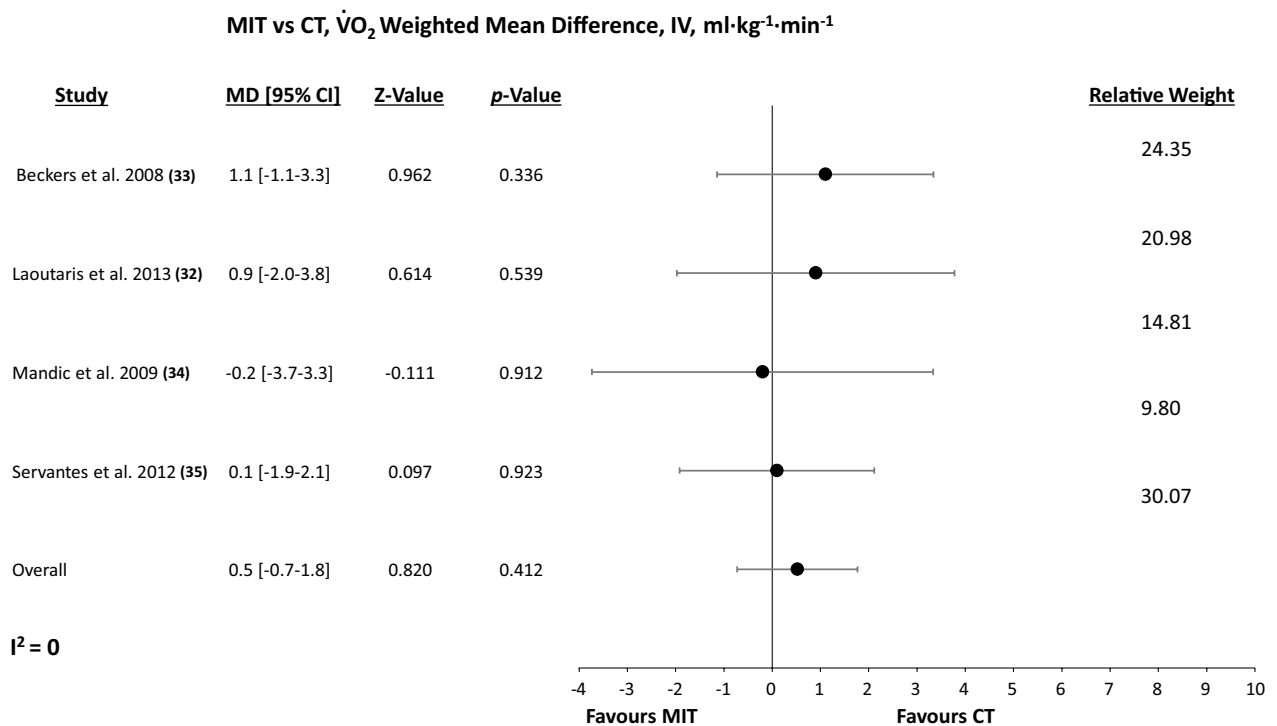


Fig. 2 Random-effects meta-analysis of the weighted mean difference in peak VO₂ between MIT and CT. MIT, Moderate intensity training; CT, combined training; MD, mean difference; VO₂, peak oxygen uptake; IV, weighted mean difference

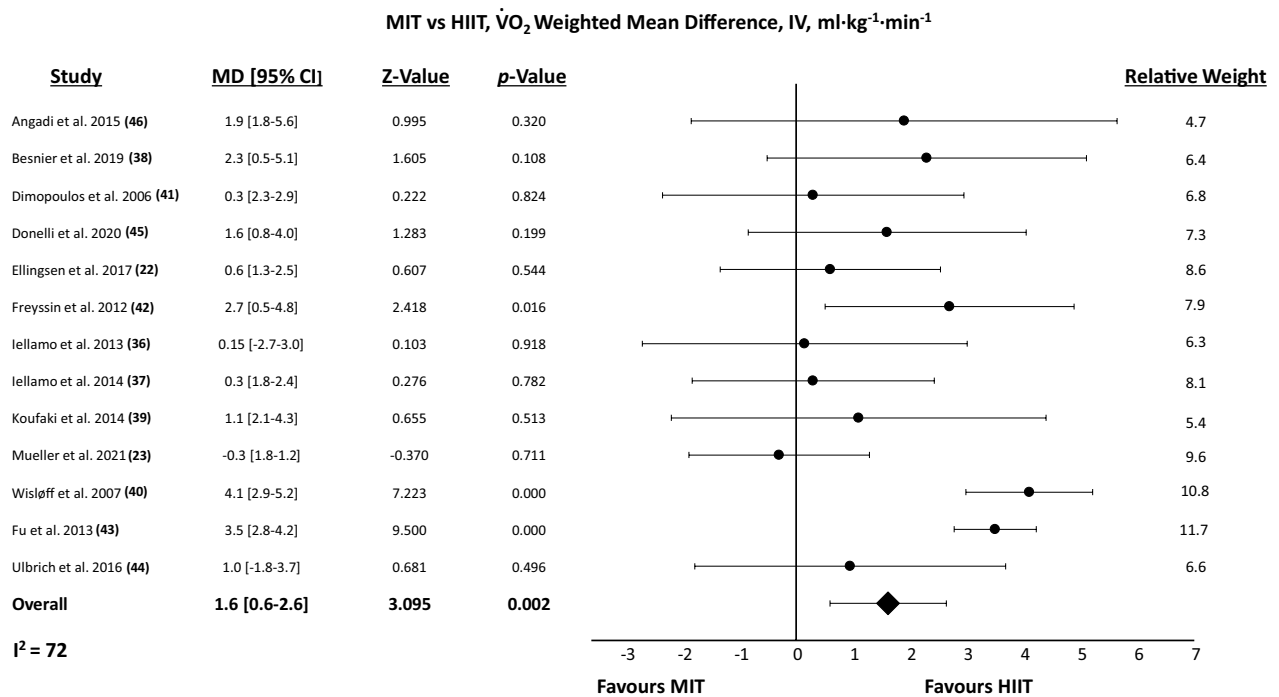


Fig. 3 Random-effects meta-analysis of the weighted mean difference in peak $\dot{V}O_2$ between MIT and HIIT. MIT, Moderate intensity training; HIIT, high-intensity interval training; MD, Mean Difference; $\dot{V}O_2$, peak oxygen uptake; IV, weighted mean difference

in oxygen delivery due to impaired LV function [41]. As such, the present increase in cardiac systolic function as measured by LVEF, which is supported by previous work [42], may have had a greater influence on peak $\dot{V}O_2$ in HFrEF compared to HFpEF, and therefore, the greater magnitude of increase in LVEF produced by HIIT may have translated into significantly greater improvements in peak $\dot{V}O_2$ for HFrEF, but not HFpEF. Further, these findings should be considered in the context of the magnitude of change, with greater differences seen in HFrEF than HFpEF, potentially contributing to these differing peak $\dot{V}O_2$ results. It is also important to note that HFpEF remains comparatively under-researched in regard to interventional management strategies, and thus the lower number of analysed effect sizes may not have sufficiently powered such statistical analysis, highlighting the need for a greater quantity of rigorous ET trials to truly discern optimal exercise prescription practices in HFpEF. Moreover, given the results of the Egger’s test [21], both the peak $\dot{V}O_2$ and LVEF results should certainly be interpreted with acknowledgement of publication bias. This is especially important given that lower/non-significant effects sizes are reported in the larger scale work analysed within this study [22, 23]. In particular, the extensive studies by Ellingsen et al. [22] and Mueller et al. [23]

were the largest trials, also reporting 12-month follow-up data that were excluded from the present analysis but again demonstrated no significant differences in $\dot{V}O_2$ and LVEF changes.

Separately, we found no significant difference across any parameters when MIT is compared against CT. In regard to practical application, this finding provides support for the implementation of CT over MIT alone, indicating that the addition of resistance exercise to MIT does not inhibit the aerobic adaptations in HF. Although these aerobic adaptations are critical to maintain, the addition of resistance training is well established to provide independent metabolic and functional muscular benefits which are essential to offset myopathy and preserve muscular strength [43, 44]. As well as carrying prognostic implications, these muscular adaptations are evidenced to translate into improvements in quality of life [45], which is commonly depleted in both HFrEF and HFpEF [46]. While these findings provide strong support for the inclusion of resistance exercise to ET interventions in HF, very little research to date has investigated the combined effects of HIIT and resistance training, which based on the present analysis, may provide the greatest magnitude of physiological adaptation. A recent pilot study from Hornikx et al. [17] found HIIT

supplemented with peripheral resistance and inspiratory muscle training to be more effective than traditional MIT in improving peripheral and inspiratory muscle strength, with no training effect differences in peak VO_2 . Undoubtedly, larger studies are needed to establish the effectiveness of HIIT combined with resistance training in HF_rEF and HF_pEF cardiac rehabilitation.

Limitations

Due to various inter-study methodological and interventional differences, significant statistical heterogeneity is a primary limitation of the present analysis. To account for this, random-effects models and meta-regression analyses were applied, but none of the analysed moderators explained any of the observed variance in statistical significance. Additionally, especially in HF_pEF, some of the pooled analyses involved a small number of study groups and many of the analysed studies had wide confidence intervals which have implications for the reliability of conclusions drawn from such statistically powered measures. Separately, the majority of analysed studies did not provide sufficient information regarding intravenous iron treatment and its associated benefits, which remains a limitation of current available data. As an inherent limitation to the present work, we collectively analysed patients of differing HF severities, thus conflating the results of patients with heterogeneous baseline characteristics. Furthermore, many HF patients, particularly those randomised to HIIT, often struggle to reach the intensities prescribed in the analysed trials, which may have implications for achieved adaptations. Finally, most included trials do not disclose if the employed protocols are isocaloric or not, and therefore, whether the observed differences disappear when MIT and HIIT protocols are calorie matched is not clear and should be considered.

Conclusion

HIIT is significantly more effective than MIT for improving peak VO_2 and LVEF in HF patients. Dichotomized by HF phenotype, HIIT is significantly more effective than MIT for improving peak VO_2 and LVEF in HF_rEF, while only LVEF is significantly improved in HF_pEF. Separately, we found no significant differences between MIT and CT for peak VO_2 or LVEF, suggesting that the addition of resistance exercise to MIT does not impact aerobic adaptations in HF. Based on these findings, future research should investigate the effectiveness of HIIT combined with resistance training to further establish the optimal exercise prescription in HF phenotypes.

Supplementary Information

The online version contains supplementary material available at <https://doi.org/10.1186/s40798-022-00549-1>.

Additional file 1. Search strategy details, TESTEX study scoring, tabled study characteristic data and advanced moderator analysis results.

Acknowledgements

We thank MollyThomsonFigureArt for expert artistic assistance in constructing the graphical abstract.

Author contributions

JE, NS, RR, FJ, JM, JW, AM, RS and JO'D contributed to the conception and design of the study. JE and JO'D helped in the development of the search strategy, conducted the systematic review, completed the acquisition of data and performed the data analysis. All authors assisted with the interpretation. JE and JO'D were the principal writers of the manuscript. All authors contributed to the drafting and revision of the final article, and approved the final submitted version of the manuscript. All authors read and approved the final manuscript.

Funding

No sources of funding were used to assist in the preparation of this article.

Availability of data and materials

All data generated or analysed during this study are included in this published article and its Additional file 1.

Declarations

Ethics approval and consent to participate

Not applicable.

Consent for publication

Not applicable.

Competing interests

JE, NS, RR, FJ, JM, JW, AM, RS and JO declare that they have no competing interests relevant to the content of this review.

Received: 26 January 2022 Accepted: 20 December 2022

Published online: 09 January 2023

References

1. Conraads VM, Beckers PJ. Exercise training in heart failure: practical guidance. *Heart*. 2010;96:2025–31.
2. Morris JH, Chen L. Exercise training and heart failure: a review of the literature. *Card Fail Rev*. 2019;5:57.
3. van Tol BAF, Huijsmans RJ, Kroon DW, Schothorst M, Kwakkel G. Effects of exercise training on cardiac performance, exercise capacity and quality of life in patients with heart failure: a meta-analysis. *Eur J Heart Fail*. 2006;8:841–50.
4. Tucker WJ, Beaudry RI, Liang Y, Clark AM, Tomczak CR, Nelson MD, et al. Meta-analysis of exercise training on left ventricular ejection fraction in heart failure with reduced ejection fraction: a 10-year update. *Prog Cardiovasc Dis*. 2019;62:163–71.
5. Haykowsky MJ, Liang Y, Pechter D, Jones LW, McAlister FA, Clark AM. A meta-analysis of the effect of exercise training on left ventricular remodeling in heart failure patients. The benefit depends on the type of training performed. *J Am Coll Cardiol*. 2007;49:2329–36.
6. O'Connor CM, Whellan DJ, Lee KL, Keteyian SJ, Cooper LS, Ellis SJ, et al. Efficacy and safety of exercise training in patients with chronic heart failure: HF-ACTION randomized controlled trial. *JAMA*. 2009;301:1439–50.

7. Taylor RS, Walker S, Smart NA, Piepoli MF, Warren FC, Ciani O, et al. Impact of exercise-based cardiac rehabilitation in patients with heart failure (ExTraMATCH II) on mortality and hospitalisation: an individual patient data meta-analysis of randomised trials. *Eur J Heart Fail*. 2018;20:1735.
8. Jackson L, Leclerc J, Erskine Y, Linden W. Getting the most out of cardiac rehabilitation: a review of referral and adherence predictors. *Heart*. 2005;91:10–4.
9. Ruano-Ravina A, Pena-Gil Carlos, Abu-Assi Emad, Raposeiras S, van't Hof A, Meindersma E, et al. Participation and adherence to cardiac rehabilitation programs. A systematic review. *Int J Cardiol*. 2016;223:436–43.
10. McDonagh TA, Metra M, Adamo M, Gardner RS, Baumbach A, Böhm M, et al. 2021 ESC guidelines for the diagnosis and treatment of acute and chronic heart failure. *Eur Heart J*. 2021;42:3599–726.
11. Gomes Neto M, Durães AR, Conceição LSR, Saquetto MB, Ellingsen Ø, Carvalho VO. High intensity interval training versus moderate intensity continuous training on exercise capacity and quality of life in patients with heart failure with reduced ejection fraction: a systematic review and meta-analysis. *Int J Cardiol*. 2018;15(261):134–41.
12. Way KL, Vidal-Almela S, Keast M-L, Hans H, Pipe AL, Reed JL. The feasibility of implementing high-intensity interval training in cardiac rehabilitation settings: a retrospective analysis. *BMC Sport Sci Med Rehabil*. 2020;12:1–11.
13. Page MJ, McKenzie JE, Bossuyt PM, Boutron I, Hoffmann TC, Mulrow CD, The PRISMA, et al. Statement: an updated guideline for reporting systematic reviews. *BMJ*. 2020;2021:372.
14. Hansen D, Dendale P, Coninx K, Vanhees L, Piepoli MF, Niebauer J, et al. The European Association of Preventive Cardiology Exercise Prescription in Everyday Practice and Rehabilitative Training (EXPERT) tool: a digital training and decision support system for optimized exercise prescription in cardiovascular disease. Concept, definitions and construction methodology. *Eur J Prev Cardiol*. 2017;24:1017–31.
15. Smart NA, Steele M. A comparison of 16 weeks of continuous vs intermittent exercise training in chronic heart failure patients. *Congest Hear Fail*. 2012;18:205–11.
16. Georgantas A, Dimopoulos S, Tasoulis A, Karatzanos E, Pantsios C, Agapitou V, et al. Beneficial effects of combined exercise training on early recovery cardiopulmonary exercise testing indices in patients with chronic heart failure. *J Cardiopulm Rehabil Prev*. 2014;34:378–85.
17. Hornikx M, Buys R, Cornelissen V, Deroma M, Goetschalckx K. Effectiveness of high intensity interval training supplemented with peripheral and inspiratory resistance training in chronic heart failure: a pilot study. *Acta Cardiol*. 2020;75:339–47.
18. Smart NA, Waldron M, Ismail H, Giallauria F, Vigorito C, Cornelissen V, et al. Validation of a new tool for the assessment of study quality and reporting in exercise training studies: TESTEX. *Int J Evid Based Healthc*. 2015;13:9–18.
19. Fu R, Holmer HK. Change score or follow-up score? Choice of mean difference estimates could impact meta-analysis conclusions. *J Clin Epidemiol*. 2016;76:108–17.
20. Huedo-Medina TB, Sánchez-Meca J, Marín-Martínez F, Botella J. Assessing heterogeneity in meta-analysis: Q statistic or I² Index? *Psychol Methods*. 2006;11:193–206.
21. Egger M, Smith GD, Schneider M, Minder C. Bias in meta-analysis detected by a simple, graphical test. *BMJ*. 1997;315:629–34.
22. Ellingsen Ø, Halle M, Conraads V, Støylen A, Dalen H, Delagardelle C, et al. High-intensity interval training in patients with heart failure with reduced ejection fraction. *Circulation*. 2017;135:839–49.
23. Mueller S, Winzer EB, Duvinage A, Gevaert AB, Edelmann F, Haller B, et al. Effect of high-intensity interval training, moderate continuous training, or guideline-based physical activity advice on peak oxygen consumption in patients with heart failure with preserved ejection fraction: a randomized clinical trial. *JAMA*. 2021;325:542–51.
24. Laoutaris ID, Adamopoulos S, Manginas A, Panagiotakos DB, Kallistratos MS, Doulaptsis C, et al. Benefits of combined aerobic/resistance/inspiratory training in patients with chronic heart failure. A complete exercise model? A prospective randomised study. *Int J Cardiol*. 2013;167:1967–72.
25. Beckers PJ, Denollet J, Possemiers NM, Wuyts FL, Vrints CJ, Conraads VM. Combined endurance-resistance training vs. endurance training in patients with chronic heart failure: a prospective randomized study. *Eur Heart J*. 2008;29:1858–66.
26. Mandic S, Tymchak W, Kim D, Daub B, Quinney HA, Taylor D, et al. Effects of aerobic or aerobic and resistance training on cardiorespiratory and skeletal muscle function in heart failure: a randomized controlled pilot trial. *Clin Rehabil*. 2009;23:207–16.
27. Servantes DM, Pelcerman A, Salvetti XM, Salles AF, De Albuquerque PF, De Salles FCA, et al. Effects of home-based exercise training for patients with chronic heart failure and sleep apnoea: a randomized comparison of two different programmes. *Clin Rehabil*. 2012;26:45–57.
28. Iellamo F, Manzi V, Caminiti G, Vitale C, Castagna C, Massaro M, et al. Matched dose interval and continuous exercise training induce similar cardiorespiratory and metabolic adaptations in patients with heart failure. *Int J Cardiol*. 2013;167:2561–5.
29. Iellamo F, Caminiti G, Sposato B, Vitale C, Massaro M, Rosano G, et al. Effect of High-Intensity interval training versus moderate continuous training on 24-h blood pressure profile and insulin resistance in patients with chronic heart failure. *Intern Emerg Med*. 2014;9:547–52.
30. Besnier F, Labrunée M, Richard L, Faggianelli F, Kerros H, Soukarié L, et al. Short-term effects of a 3-week interval training program on heart rate variability in chronic heart failure. A randomised controlled trial. *Ann Phys Rehabil Med*. 2019;62:321–8.
31. Koufaki P, Mercer TH, George KP, Nolan J. Low-volume high-intensity interval training vs continuous aerobic cycling in patients with chronic heart failure: a pragmatic randomised clinical trial of feasibility and effectiveness. *J Rehabil Med*. 2014;46:348–56.
32. Wisløff U, Støylen A, Loennechen JP, Bruvold M, Rognum Ø, Haram PM, et al. Superior cardiovascular effect of aerobic interval training versus moderate continuous training in heart failure patients. *Circulation*. 2007;115:3086–94.
33. Dimopoulos S, Anastasiou-Nana M, Sakellariou D, Drakos S, Kapsimalakou S, Maroulidis G, et al. Effects of exercise rehabilitation program on heart rate recovery in patients with chronic heart failure. *Eur J Cardiovasc Prev Rehabil*. 2006;13:67–73.
34. Freyssin C, Verkindt C, Prieur F, Benaich P, Maunier S, Blanc P. Cardiac rehabilitation in chronic heart failure: effect of an 8-week, high-intensity interval training versus continuous training. *Arch Phys Med Rehabil*. 2012;93:1359–64.
35. Fu TC, Wang CH, Lin PS, Hsu CC, Chergn WJ, Huang SC, et al. Aerobic interval training improves oxygen uptake efficiency by enhancing cerebral and muscular hemodynamics in patients with heart failure. *Int J Cardiol*. 2013;167:41–50.
36. Ulbrich AZ, Angarten VG, Schmitt Netto A, Sties SW, Bündchen DC, De MLS, et al. Comparative effects of high intensity interval training versus moderate intensity continuous training on quality of life in patients with heart failure: Study protocol for a randomized controlled trial. *Clin Trials Regul Sci Cardiol*. 2016;13:21–8.
37. Donelli da Silveira A, Beust de Lima J, da Silva Piardi D, dos Santos Macedo D, Zanini M, Nery R, et al. High-intensity interval training is effective and superior to moderate continuous training in patients with heart failure with preserved ejection fraction: a randomized clinical trial. *Eur J Prev Cardiol*. 2020;27:1733–43.
38. Angadi SS, Mookadam F, Lee CD, Tucker WJ, Haykowsky MJ, Gaesser GA. High-intensity interval training vs. moderate-intensity continuous exercise training in heart failure with preserved ejection fraction: a pilot study. *J Appl Physiol*. 2015;119:753–8.
39. Swank AM, Horton J, Fleg JL, Fonarow GC, Keteyian S, Goldberg L, et al. Modest increase in peak VO₂ is related to better clinical outcomes in chronic heart failure patients. *Circ Hear Fail*. 2012;5:579–85.
40. Fukuta H, Goto T, Wakami K, Kamiya T, Ohte N. Effects of exercise training on cardiac function, exercise capacity, and quality of life in heart failure with preserved ejection fraction: a meta-analysis of randomized controlled trials. *Heart Fail Rev*. 2019;24:535–47.
41. Haykowsky MJ, Tomczak CR, Scott JM, Paterson DI, Kitzman DW. Exploring new concepts in the management of heart failure with preserved ejection fraction: Is exercise the key for improving treatment?: Determinants of exercise intolerance in patients with heart failure and reduced or preserved ejection fraction. *J Appl Physiol*. 2015;119:739.
42. Cornelis J, Beckers P, Taeymans J, Vrints C, Vissers D. Comparing exercise training modalities in heart failure: a systematic review and meta-analysis. *Int J Cardiol*. 2016;221:867–76.
43. Volaklis KA, Tokmakidis SP. Resistance exercise training in patients with heart failure. *Sport Med*. 2005;35:1085–103.

44. Mandic S, Myers J, Selig SE, Levinger I. Resistance versus aerobic exercise training in chronic heart failure. *Curr Heart Fail Rep.* 2012;9:57–64.
45. Giuliano C, Karahalios A, Neil C, Allen J, Levinger I. The effects of resistance training on muscle strength, quality of life and aerobic capacity in patients with chronic heart failure: a meta-analysis. *Int J Cardiol.* 2017;227:413–23.
46. Hobbs FDR, Kenkre JE, Roalfe AK, Davis RC, Hare R, Davies MK. Impact of heart failure and left ventricular systolic dysfunction on quality of life: a cross-sectional study comparing common chronic cardiac and medical disorders and a representative adult population. *Eur Heart J.* 2002;23:1867–76.

Publisher's Note

Springer Nature remains neutral with regard to jurisdictional claims in published maps and institutional affiliations.

Submit your manuscript to a SpringerOpen[®] journal and benefit from:

- ▶ Convenient online submission
- ▶ Rigorous peer review
- ▶ Open access: articles freely available online
- ▶ High visibility within the field
- ▶ Retaining the copyright to your article

Submit your next manuscript at ▶ [springeropen.com](https://www.springeropen.com)
