



Original Article

Corresponding Author

Fengzeng Jian

<https://orcid.org/0000-0001-7860-278X>

China International Neuroscience Institute
(CHINA-INI), Xuanwu Hospital, Capital
Medical University, No. 45 Changchun
Street, Xicheng District, Beijing 100053,
China
Email: jianfengzeng@xwh.ccmu.edu.cn

Received: June 26, 2022

Revised: August 23, 2022

Accepted: August 26, 2022

Relationship Between Syrinx Resolution and Cervical Sagittal Realignment Following Decompression Surgery for Chiari I Malformation Related Syringomyelia Based on Configuration Phenotypes

Chunli Lu^{1,2,3,4}, Longbing Ma^{1,2,3,4}, Jian Guan^{1,2,3,4}, Zhenlei Liu^{1,2,3,4}, Kai Wang^{1,2,3,4}, Wanru Duan^{1,2,3,4}, Zan Chen^{1,2,3,4}, Hao Wu^{1,2,3,4}, Fengzeng Jian^{1,2,3,4}

¹Department of Neurosurgery, Xuanwu Hospital, Capital Medical University, Beijing, China

²Neurospine Center, China International Neuroscience Institute (CHINA-INI), Beijing, China

³Research Center of Spine and Spinal Cord, Beijing Institute of Brain Disorders, Capital Medical University, Beijing, China

⁴National Center for Neurological Disorders, Beijing, China

Objective: Combined with different configuration types of syringomyelia, to analyze the correlation between syrinx resolution and changes in cervical sagittal alignment following Foramen magnum and Magendie dredging (FMMD) for syringomyelia associated with Chiari I malformation (CM-I), and to further explore the respective relationship with clinical outcome.

Methods: A consecutive series of 127 patients with CM-I and syringomyelia who underwent FMMD in our center met the inclusion criteria of this study. Their clinical records and radiologic data were retrospectively reviewed. The Japanese Orthopedic Association (JOA) scoring system and the Chicago Chiari Outcome Scale (CCOS) were used to evaluate the surgical efficacy. The phenotypes of syringomyelia and the clinical characteristics of the patients were analyzed according to grouping by cervical curvature at baseline.

Results: The preoperative straight or kyphotic cervical alignment is more common in the moniliform syrinx. After surgery, the syrinx resolution and cervical sagittal realignment in the moniliform group are more obvious, and the corresponding prognosis is relatively better. Spearman correlation analysis showed that the $\Delta S/C$ ratio (the change ratio of syrinx/cord) was positively correlated with the CCOS ($p = 0.001$, $r = 0.897$) and $\Delta C2-7A$ (the change of lower cervical angle) ($p = 0.002$, $r = 0.560$). There was also a correlation between the ΔJOA score (the change rate of the JOA score) and $\Delta C2-7A$ ($p = 0.012$, $r = 0.467$).

Conclusion: After decompression surgery, syrinx resolution may coexist with the changes in the subaxial lordosis angle, especially for syrinx in moniliform type, and the relationship between syrinx resolution and cervical sagittal realignment might be valuable for evaluating the surgical outcome.

Keywords: Cervical sagittal alignment, Syringomyelia, Chiari malformation, Decompression surgery, Prognosis



This is an Open Access article distributed under the terms of the Creative Commons Attribution Non-Commercial License (<https://creativecommons.org/licenses/by-nc/4.0/>) which permits unrestricted non-commercial use, distribution, and reproduction in any medium, provided the original work is properly cited.

Copyright © 2022 by the Korean Spinal Neurosurgery Society

INTRODUCTION

Syringomyelia is characterized by chronic dilation of the central canal of the spinal cord due to the abnormal accumulation of fluid caused by cerebrospinal fluid (CSF) circulation disorder. It is a disease often associated with Chiari malformation, trauma, tumor, inflammatory disease, or idiopathic etiologies.¹⁻³ Chiari malformation type I (CM-I) is a kind of congenital dysplasia in the craniovertebral junction. Imaging often shows a small posterior fossa volume and syringomyelia located at the lower cervical and upper thoracic segments. For the pathogenesis of CM-I related syringomyelia, there has been a wide concern in the fluid dynamics, syrinx phenotypes, clinical symptoms, and imaging morphology of the posterior fossa and craniovertebral junction (CVJ) region.^{4,5}

Surgical procedures have been generally recognized for improving the neurological status of CM-I patients, such as posterior fossa decompression (PFD) or with duraplasty (PFDD), or a more thorough intradural decompression for syringomyelia, such as Foramen magnum and Magendie dredging (FMMD).^{6,7} By integrating clinical and radiographic characteristics of both syringomyelia and spinal biomechanics, we could better evaluate the surgical outcome of the CM-I patients after decompression surgery.⁸⁻¹⁰ In particular, the relationship between CM-I related syringomyelia and scoliosis has been recognized.¹¹⁻¹³ Some studies reported that scoliosis will improve after decompression surgery for syringomyelia.^{14,15} All of the above suggested that syringomyelia may be a relevant factor affecting the spinal alignment. However, there are few reports focused on the relationship between the changes in syringomyelia and cervical sagittal alignment parameters.

Previous researchers have proposed that the decrease of syrinx size after decompression surgery may restore cervical lordosis.¹⁶ But the correlation between syringomyelia and cervical sagittal alignment remains vague, especially among different kinds of syrinx configurations. Therefore, the purpose of this study was to further explore the correlation between syrinx resolution and changes in cervical sagittal alignment following FMMD in CM-I patients with syringomyelia and to further determine the respective relationship with clinical outcomes.

MATERIALS AND METHODS

1. Patient Selection

The study was approved by the institutional research ethics committee of Xuanwu Hospital (approval number: 2018030).

From January 2017 to January 2020, a consecutive series of 198 CM-I patients with syringomyelia confirmed by magnetic resonance imaging (MRI) were retrospectively analyzed including their clinical records and radiologic data from a prospectively maintained database in a single center. According to screening, 66 of 198 patients were excluded from this study due to the exclusion criterion, and 5 patients had incomplete imaging data or were lost to follow-up. The exclusion criteria are as follows: (1) age < 18 years old; (2) syringomyelia associated with trauma, tumor, inflammatory disease, or idiopathic etiologies; (3) patients with atlantoaxial dislocation, degenerative cervical spondylosis, congenital vertebral anomalies, severe scoliosis, myelomeningocele, or tethered cord; (4) a history of CVJ surgery with cervical or occipital fusion and instrumentation. Finally, a total of 127 patients diagnosed with CM-I and syringomyelia who underwent intradural decompression for syringomyelia in our center met the inclusion criteria of our study. The research flow chart is shown in Fig. 1.

2. Clinical Evaluation

The patients' chief complaints on admission mainly include general symptoms such as headache or neck and back pain, spinal cord syndromes such as suspended sensory disorder, amyotrophy and weakness of limbs, dysfunction of urination and defecation, and other symptoms including cerebellar symptoms and cranial nerve dysfunction. Some patients had multiple clinical symptoms at the same time. The specific data were summarized in Table 1.

3. Radiographic Evaluation

MRI and lateral radiographs of x-ray in neutral position were taken pre-and postoperatively. A routine MRI and x-ray examination was taken within one week before surgery. Follow-up MRI was conducted regularly at 1 month, 3 months (± 1 month), 6 months (± 3 months), and 1 year after surgery. After that, it was performed every 6 months until the last follow-up. All measurements were made using computer-aided software called RadiAnt DICOM Viewer (ver. 4.6.9, Medixant, Poznan, Poland). All relative radiologic measurements were repeated at least 3 times, independently by one surgeon and another radiologist.

4. X-Ray Evaluation

X-ray evaluation of the above cervical sagittal alignment parameters were shown Supplementary Fig. 1.

Cervical lordosis angles were measured successively accord-

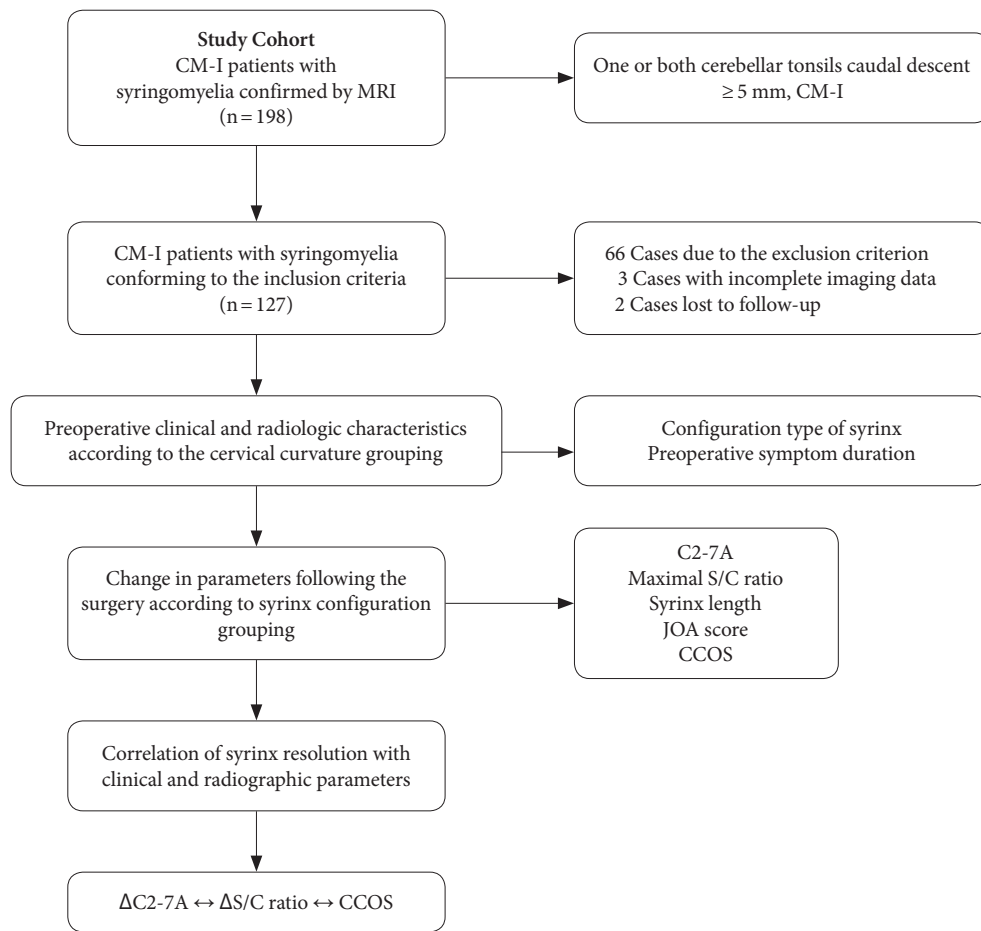


Fig. 1. Research flow chart of this clinical research. CM-I, Chiari I malformation; MRI, magnetic resonance imaging; C2-7A, lower cervical angle; JOA, Japanese Orthopedic Association; CCOS, Chicago Chiari Outcome Scale; Δ C2-7A, the change of lower cervical angle; Δ S/C ratio, the change ratio of syrinx/cord.

ing to the 4-line method from the lateral radiographs in a neutral position before surgery and at the final follow-up evaluation: drawing a line parallel to the inferior endplate of the upper vertebral body, and another line parallel to the inferior endplate of the lower vertebral body. Perpendicular lines are then drawn from each of the 2 lines noted above, and the angle subtended between the crossing of the perpendicular lines is the cervical lordosis angle. A negative value of the angle meant lordosis and the positive value marked kyphosis.

Upper cervical angle (C0-2A): the included angle between the McGregor line and the line parallel to the lower endplate of the C2 body.

Lower cervical angle (C2-7A): the included angle between a line parallel to the lower endplate of the C2 body and a line parallel to that of the C7 body.

The sagittal vertical axis (C2-7 SVA): the horizontal distance between the C2 plumb line and the posterosuperior point of

the C7 body.

T1 slope: The T1 slope can be used to predict the physiological curvature of the cervical spine, which was measured as the included angle between the upper endplate of T1 and the horizontal line.

5. MRI Evaluation

As proposed by Ono et al.,¹⁷ the cerebellar tonsillar descent could be divided into 3 grades in MRI: grade 1, the cerebellar tonsil descends beyond the foramen magnum but does not reach the C1 arch; grade 2, the cerebellar tonsil reaches the C1 arch; grade 3, the cerebellar tonsil descends beyond the C1 arch.

The following indicators were measured at the T2-weighted median sagittal and transverse positions of MRI before surgery and at the final follow-up: (1) Syrinx/spinal cord ratio (S/C ratio), the ratio of syrinx diameter to the spinal cord diameter at the same level. (2) Syrinx length: the number of vertebral seg-

Table 1. The preoperative distribution of cervical curvature combined with the data of the patients

Variable	Hyperlordosis	Normal lordosis [†]	Straight or kyphotic	H/F value	p-value
No. of patients	8	71	48		
Female sex	5	45	38	3.263	0.071
Age (yr)	49.0 ± 9.3	48.9 ± 11.1	45.4 ± 9.9	1.591	0.208
Degree of cerebellar tonsillar descent				2.147	0.342
Grade 1	2	37	22		
Grade 2	4	29	11		
Grade 3	2	14	8		
Length of the syrinx (segment)	8.8 ± 4.5	9.0 ± 3.4	8.7 ± 4.0	0.030	0.971
Maximal S/C ratio (%)	60.1 ± 22.1	59.3 ± 18.9	66.5 ± 17.5	2.176	0.118
Syrinx location				0.821	0.663
Cervical	1	14	12		
Cervicothoracic	6	56	34		
Holocord	1	1	2		
Syrinx configuration				13.490	0.004*
Distended type	2	26	14		
Moniliform type	1	8	19		
Slender type	4	20	8		
Circumscribed type	1	17	7		
Syrinx deviation				2.329	0.312
Central	4	18	11		
Enlarged	3	45	27		
Deviated	1	8	10		
C0–2A (°)	-17.3 ± 8.5	-22.3 ± 6.5	-21.0 ± 7.4	1.447	0.248
C2–7A (°)	-31.3 ± 2.8	-14.7 ± 5.3	-9.3 ± 6.6	53.388	<0.001*
General symptom					
Headache	4	29	17	0.678	0.410
Neck and back pain	2	22	14	0.001	0.971
Spinal cord symptom					
Suspended sensory disorder	3	18	8	2.118	0.146
Amyotrophy	1	16	5	1.743	0.187
Paresthesia	2	20	13	0.001	0.973
Weakness of limbs	3	19	9	1.648	0.194
Dysfunction of urination and defecation	1	2	1	0.890	0.346
Cerebellar or cranial nerve dysfunction [‡]	1	8	2	1.881	0.170
Preoperative symptom duration (mo)	45.0 ± 37.3	34.1 ± 39.0	17.4 ± 22.3	4.554	0.012*
JOA score	11.9 ± 1.9	12.3 ± 1.8	12.0 ± 2.0	0.422	0.657

Values are presented as number or mean ± standard deviation.

The H-value is the statistic value for the Kruskal-Wallis H test, and the F-value is for the 1-way analysis of variance test.

S/C ratio, change ratio of syrinx/cord; C0–2A, upper cervical angle; C2–7A, lower cervical angle; JOA, Japanese Orthopedic Association.

*p < 0.05, statistically significant differences. [†]The criteria for the judgment of hyperlordosis, normal lordosis, and straight or kyphotic cervical alignment. [‡]Cerebellar symptoms: ataxia, dysarthria; cranial nerve dysfunction: diplopia, dysphagia.

ments spanned by the spinal syrinx. (3) A radiographic change ratio in the maximal S/C ratio or syrinx length was calculated using the following formula: (preoperative value-postoperative

value)/preoperative value. A ratio value of zero means no improvement of the syrinx size, whereas 1 means the complete disappearance of the syrinx.

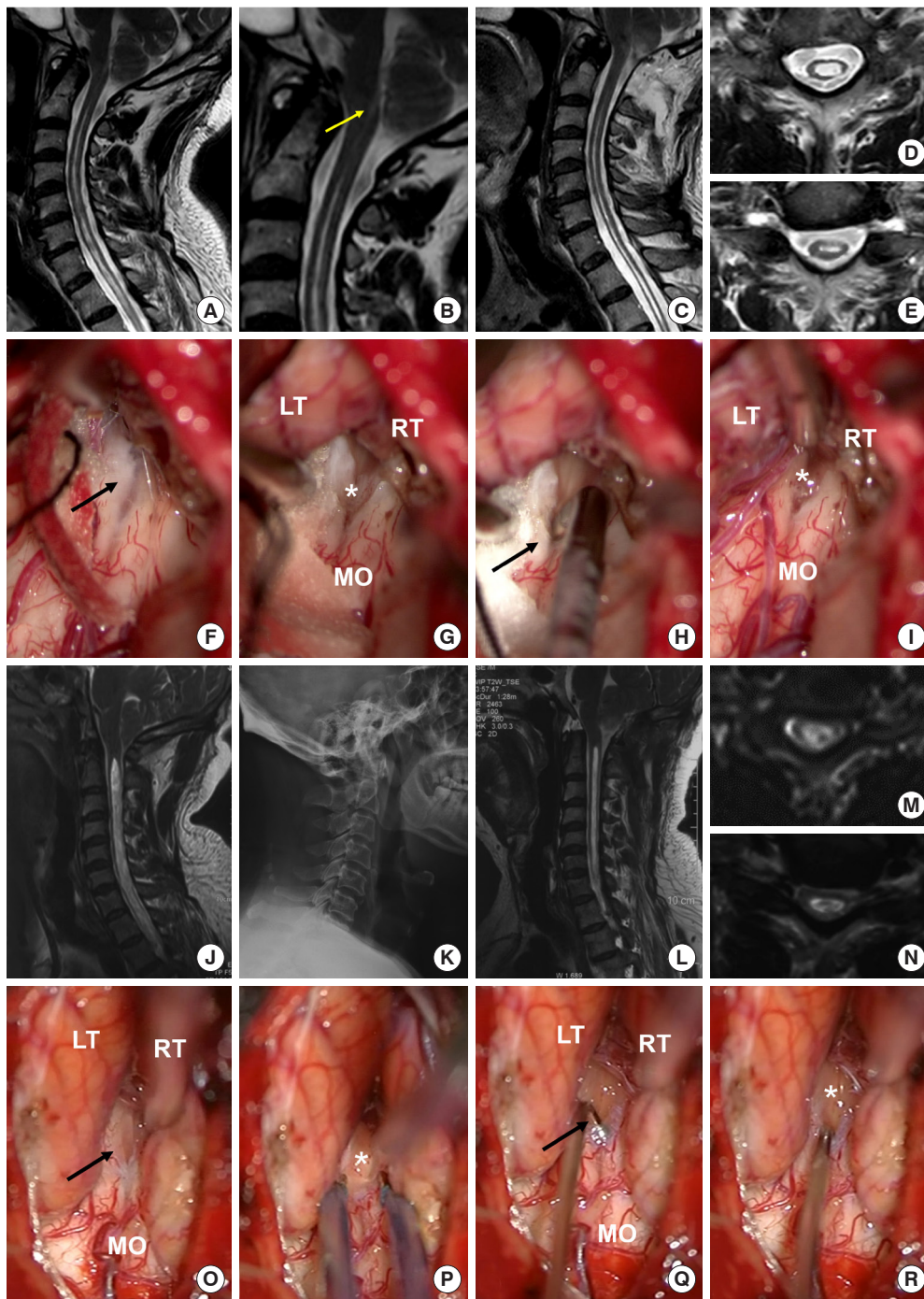


Fig. 2. The specific surgical procedures of Foramen magnum and Magendie dredging. Illustrative case 1: The median sagittal and transverse positions of T2-weighted magnetic resonance imaging (MRI) before surgery show the syringomyelia and a detectable channel between the fourth ventricle and the syrinx (yellow arrow) (A, B, D), and the postoperative MRI shows effective reduction of the syrinx (C, E). (F) The departure of the tonsils shows arachnoid adhesions (black arrow) overlying the foramen of Magendie. (G) Dissolution of the arachnoid adhesions and exposure of the foramen of Magendie (asterisk). (H, I) Completely opening of the foramen of Magendie by microsurgical separation (black arrow) and cerebrospinal fluid (CSF) recirculation after dredging. Illustrative case 2: (J, L, M, N) The pre- and postoperative MRI shows the resolution of syringomyelia. (K) The preoperative x-ray radiograph shows a straight cervical alignment. (O) The foramen of Magendie is visible under the semitransparent veil (arrow). (P) Dissolution of the arachnoid adhesions and exposure of the foramen of Magendie (asterisk). (Q, R) Opening of the arachnoid veil and CSF recirculation after dredging. LT, left tonsil, RT, right tonsil, MO, medulla oblongata.

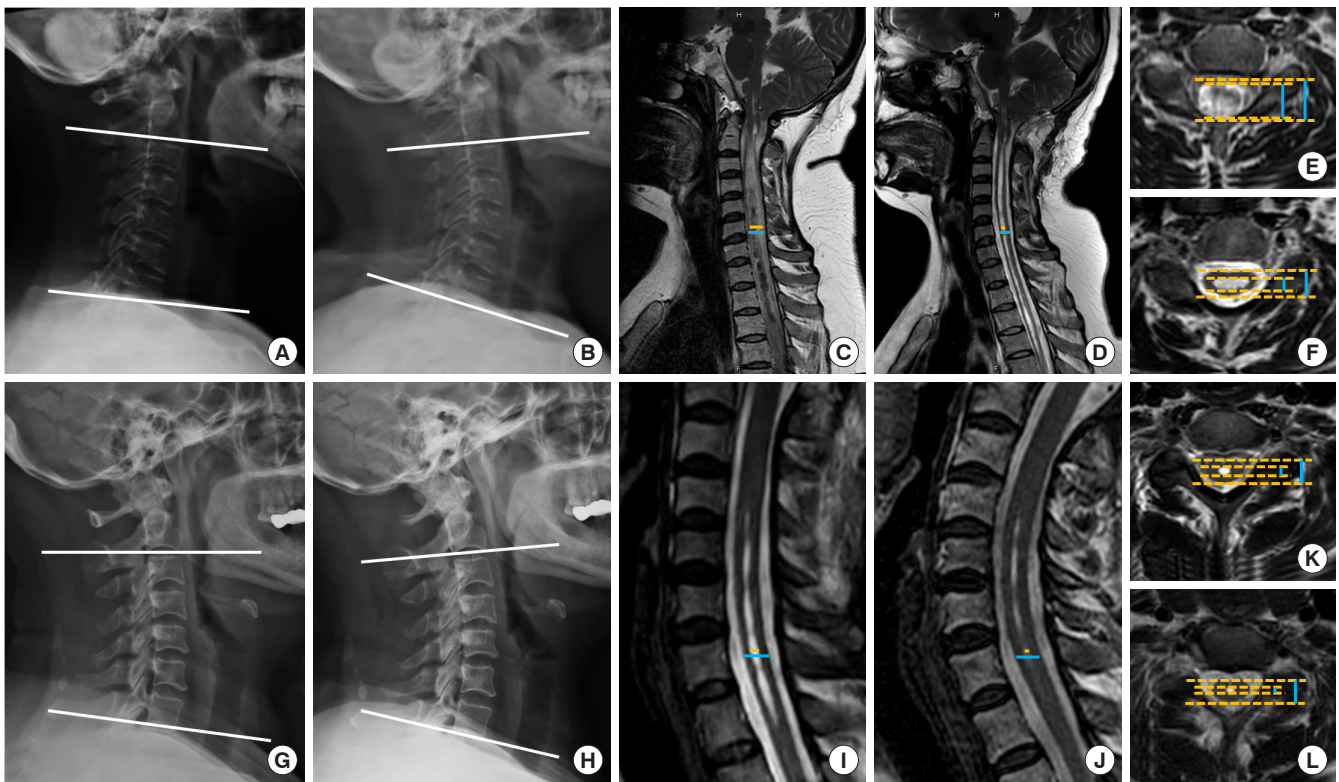


Fig. 3. Radiographic parameters show the cervical sagittal realignment and syrinx resolution following the Foramen magnum and Magendie dredging. Illustrative case 3: The x-ray radiograph of the patient with moniliform syrinx shows the change in C2–7A from 0.8° before surgery (A) to -21.1° after surgery (B) and the change in S/C ratio in magnetic resonance imaging (83.5% to 36.3%) (C–F). Illustrative case 4: The patient with slender syrinx shows the change in C2–7A from -8.1° before surgery (G) to -17.6° after surgery (H) and the change in S/C ratio (41.2% to 18.7%) (I–L). C2–7A, lower cervical angle; S/C, ratio, syrinx/spinal cord ratio.

6. Operation Strategy

All operations in all of the 127 patients were performed via PFD with intradural exploration using FMMD to remove the factors causing CSF circulation obstruction, which was recorded via the operating microscope for all potential intradural pathology and factors (Fig. 2). The specific surgical procedures have been described in our previous study.^{6,7}

7. Variable and Grouping Definition

The postoperative syrinx was reported to be either significantly resolved (syrinx decreased in size $\geq 20\%$, a more than 20% decrease in maximal S/C ratio on follow-up MRI) (Fig. 3) or unchanged (syrinx decreased in size less than 20% or remained the same size).

The physiological curvature of the cervical spine in men is between -16° to -22° and -15° to -25° in females.¹⁸ The negative value less than this range (the absolute value) is defined as a straight cervical spine, the positive value is kyphosis, and the larger value than this range (the absolute value) is defined as

hyperlordosis.

Referring to the configuration of the syringomyelia, the syrinx can be defined into 4 types: A, distended type; B, moniliform type; C, slender type; D, circumscribed type (Fig. 4A–D).

8. Prognostic Evaluation

All patients completed the evaluation of the Japanese Orthopedic Association (JOA) scoring system to assess their neurological status before surgery and at the last follow-up. We calculated the neurologic improvement rate (Δ JOA score) according to the preoperative JOA score and the last follow-up JOA score by the following formula: $(\text{postoperative score} - \text{preoperative score}) \times 100\% / (\text{full score [17 points]} - \text{preoperative score})$.

The Chicago Chiari Outcome Scale (CCOS) was used to evaluate the surgical efficacy from 4 aspects: pain symptoms, nonpain symptoms, functionality, and complications, with scores from 1 to 4 for each item. The better the prognosis, the higher the score, with the CCOS score groupings presenting the prognosis as good between 13 and 16, no obvious improve-

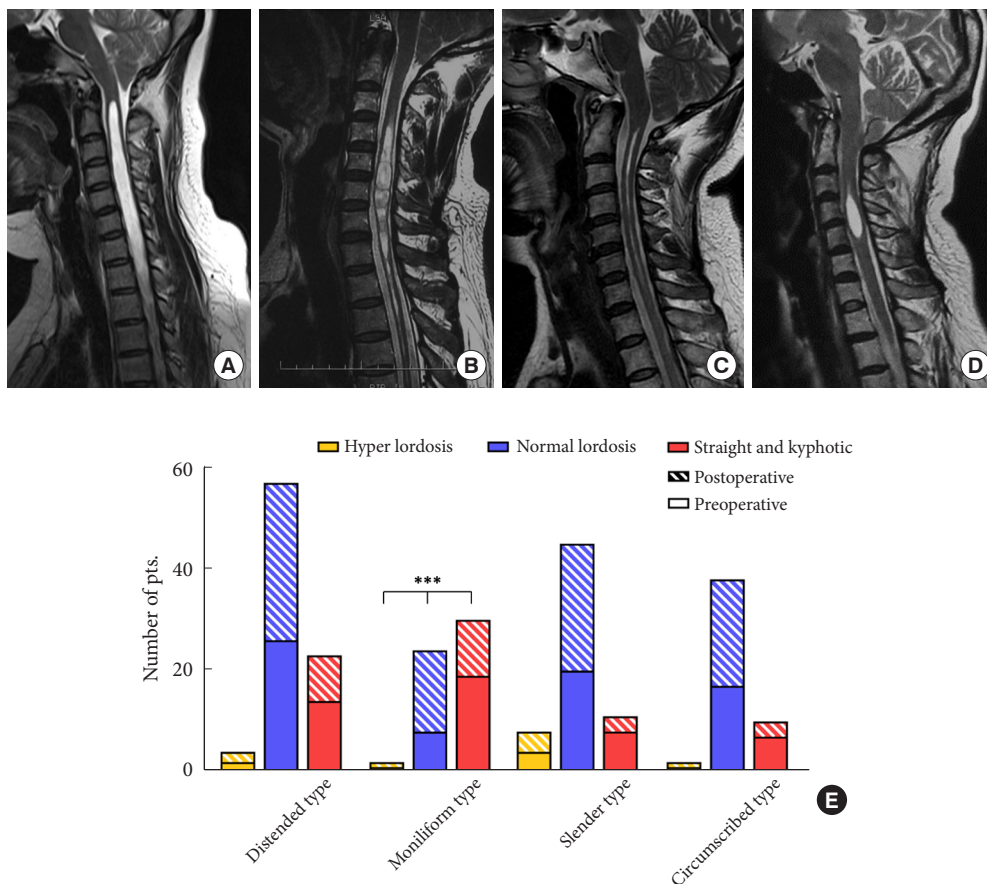


Fig. 4. The configuration of the syrinx can be divided into 4 types: distended type (A), moniliform type (B), slender type (C), circumscribed type (D). (E) The cervical sagittal realignment of the moniliform syrinx is the most obvious after Foramen magnum and Magendie dredging in the 4 different morphological kinds of syringomyelia (**p < 0.01).

ment between 9 and 12, and poor between 4 and 8.

9. Statistical Analysis

IBM SPSS Statistics ver. 22.0 (IBM Co., Armonk, NY, USA) was used for statistical analysis. For continuous variables, the mean values are presented with standard deviations, and the differences between the 2 groups were analyzed using the Student t-test and 1-way analysis of variance test for ≥ 3 groups. A chi-square or Fisher exact test was used for dichotomous categorical variables, and the Kruskal-Wallis H test was for multiple categorical variables. P-value < 0.05 was considered statistically significant. The relationships between clinical and radiographic parameters were assessed using Spearman rank correlation coefficients. Intraclass correlation coefficient (ICC) was used to evaluate the intra-repeatability of different observers (interobserver reliability). One independent researcher blinded to the group allocation completed the evaluations.

RESULTS

There were 39 men and 88 women, the mean age of whom was 47.6 years (range, 23–73 years). The mean duration of follow-up was 2.7 ± 1.2 years (range, 1.5–4.5 years). Five postoperative complications happened caused by leakage of CSF in 2 cases and superficial wound infection in 3 cases, and all of them had disappeared at the last follow-up. In the present study, syringomyelia resolved (change ratio > 20%) in 108 patients (85.0%), and the average CCOS score was 13.5 ± 1.6 after surgery. The mean values of the JOA score before surgery and at the last follow-up evaluation were 12.2 ± 1.9 points (range, 7–15 points) and 15.1 ± 1.3 points (range, 12–17 points) respectively, and the mean improvement rate was $54.1\% \pm 33.0\%$. The difference between the pre- and postoperative JOA score was significant ($p < 0.001$).

Table 2. Change in relevant parameters before surgery with that at the last follow-up

Variable	Before surgery	Last follow-up	T/F/H value	p-value
C0–2A (°)	-21.0±7.2	-23.8±6.9	-1.738	0.079
C2–7A (°)	-13.5±7.5	-17.1±6.0	-4.061	<0.001*
C2–7 lordosis			20.045	<0.001*
Hyperlordosis	8	8		
Normal lordosis	71	93		
Straight or kyphotic	48	26		
C2–7 SVA (mm)	15.3±9.4	14.8±7.4	0.279	0.781
T1-slope (°)	19.9±4.7	21.4±6.0	-1.248	0.216
Maximal S/C ratio (%)	62.1±18.9	37.4±17.9	10.708	<0.001*
Syrinx length (segment)	8.8±3.7	5.8±2.9	7.114	<0.001*
JOA score	12.2±1.9	15.1±1.3	-14.264	<0.001*
CCOS	-	13.5±1.6	-	-

Values are presented as mean ± standard deviation or number.

The T-value is the statistic value for the T-test, the H-value is for the Kruskal-Wallis H test, and the F-value is for the 1-way analysis of variance test. C0–2A, upper cervical angle; C2–7A, lower cervical angle; SVA, sagittal vertical axis; S/C ratio, syrinx/spinal cord ratio; JOA, Japanese Orthopedic Association; CCOS, Chicago Chiari Outcome Scale.

*p < 0.05, statistically significant differences.

1. The Preoperative Distribution of Cervical Curvature

Primarily, by comparing 127 CM-I patients with syringomyelia and 32 CM-I patients without syringomyelia in our center, the mean value of C2–7 angle in CM-I with syringomyelia was significantly less lordotic than that in CM-I without syringomyelia (-13.5±7.5 vs. -20.7±8.4, p < 0.05).

The distribution of preoperative cervical lordosis was different in various types of syringomyelia. Specifically, cervical alignment straight or kyphotic was more common in the moniliform type of syrinx. In addition, it was found that the preoperative symptom duration was significantly shorter in patients with cervical alignment straight or kyphotic than in patients in the other 2 groups. However, cervical curvature in patients with CM-I related syringomyelia was not related to age, gender, degree of cerebellar tonsil descent, C0–2A, syrinx length, S/C ratio, deviation, location, or the preoperative symptoms (Table 1).

2. Changes in Relevant Parameters Following the Decompression Surgery

We summarized various parameters, including changes in cervical sagittal alignment, syrinx resolution, JOA score, and CCOS (Table 2). The mean C2–7A was -13.5±7.5 before surgery and -17.1±6.0 at the last follow-up (ICC=0.856, p < 0.001), and the difference was significant between them (p < 0.001). The mean value of the maximal S/C ratio was 0.62±0.19 before surgery and 0.37±0.18 at the last follow-up (ICC=0.841, p < 0.001),

and a significant difference was shown between them (p < 0.001). The mean pre-and postoperative syrinx length was 8.8±3.7 and 5.8±2.9 (ICC=0.905, p < 0.001) and there was also a significant difference (p < 0.001). However, there was no difference between the preoperative and the last follow-up evaluation regarding C0–2A, C2–7 SVA, and T1-slope.

3. Intergroup Comparison of Changes in Key Parameters Before and After Surgery

Compared with other types of syringomyelia, the syrinx with moniliform type showed the most significant changes in ΔC2–7A (p=0.010), ΔS/C ratio (p < 0.001), and its postoperative CCOS is relatively better (p=0.031) (Table 3). The patients with normal lordosis and straight or kyphotic cervical alignment accounted for 28.6% and 67.8% before surgery, respectively. The rate of normal cervical lordosis increased to 57.1%, and the number of patients with straight or kyphotic cervical alignment decreased to 39.3%. The proportion of patients with hyperlordosis remained unchanged (3.6%) before and after surgery. Using McNemar exact test, there was a statistically significant difference between the pre- and postoperative rate of normal cervical lordosis and straight or kyphotic cervical alignment (p=0.008) (Table 4). The reliability of the radiographic measurements 3 times showed excellent consistency from different observers.

Table 3. Intergroup comparison of changes in the parameters before and after surgery

Variable	Distended type	Moniliform type	Slender type	Circumscribed type	F	p-value
$\Delta C0-2A$ (°)	4.4±9.8	3.7±7.8	2.6±4.7	2.1±4.3	0.284	0.837
$\Delta C2-7A$ (°)	2.8±6.2	6.3±4.5 [†]	2.8±4.4	2.3±4.1	3.923	0.010*
$\Delta S/C$ ratio (%)	31.8±19.5	57.0±27.1 [‡]	31.8±16.7	35.2±16.9	10.575	<0.001*
Δ Syrinx length ratio (%)	34.4±19.8	27.8±14.3	33.7±18.5	34.9±18.5	0.961	0.414
Δ JOA score (%)	49.5±32.8	56.9±36.9	55.5±30.1	56.7±33.2	0.407	0.748
CCOS	13.2±1.9	14.3±1.5	13.3±1.4	13.2±0.8	3.056	0.031*

Values are presented as mean ± standard deviation.

C0–2A, upper cervical angle; C2–7A, lower cervical angle; S/C ratio, syrinx/spinal cord ratio; JOA, Japanese Orthopedic Association; CCOS, Chicago Chiari Outcome Scale.

* $p < 0.05$, statistically significant differences. [†]Compared with the group of distended syrinx $p = 0.026$; Compared with the group of slender syrinx $p = 0.045$; Compared with the group of circumscribed syrinx $p = 0.026$. [‡]Compared with the group of distended syrinx $p < 0.001$; Compared with the group of slender syrinx $p < 0.001$; Compared with the group of circumscribed syrinx $p = 0.001$.

Table 4. Cervical sagittal realignment following the Foramen magnum and Magendie dredging

Variable	Distended type		Moniliform type [†]		Slender type		Circumscribed type	
	Preoperative	Postoperative	Preoperative	Postoperative	Preoperative	Postoperative	Preoperative	Postoperative
Hyper lordosis	2	2	1	1	4	4	1	1
Normal lordosis	26	31	8	16	20	25	17	21
Straight and kyphotic	14	9	19	11	8	3	7	3

[†]The pre- and postoperative distribution of hyper lordosis, normal lordosis, and straight or kyphotic cervical alignment differed significantly in patients with moniliform type, which was analyzed by McNemar test ($p = 0.008$).

Table 5. Correlation of syrinx resolution with clinical and radiographic parameters in moniliform syringomyelia

Variable	$\Delta S/C$ ratio (p-value)	Δ Syrinx length ratio (p-value)
Age	0.710	0.443
Sex	0.161	0.320
Tonsillar descent grade	0.092	0.215
Preoperative JOA	0.440	0.320
Preoperative C0–2A	0.124	0.747
Preoperative C2–7A	0.562	0.762
CCOS	0.001* ($r = 0.897$)	0.593
Δ JOA score	0.793	0.847
$\Delta C0-2A$	0.145	0.300
$\Delta C2-7A$	0.002* ($r = 0.560$)	0.751

Relationships between factors above were assessed using Spearman rank correlation coefficients.

S/C ratio, syrinx/spinal cord ratio; JOA, Japanese Orthopedic Association; C0–2A, upper cervical angle; C2–7A, lower cervical angle; CCOS, Chicago Chiari Outcome Scale.

* $p < 0.05$, statistically significant differences.

4. Correlation of Syrinx Resolution With Clinical and Radiographic Parameters

We further analyzed the correlation between baseline factors

(age, sex, and tonsillar descent grades), syrinx resolution, $\Delta C2-7A$, Δ JOA score, and CCOS (Table 5). Spearman correlation analysis showed that the $\Delta S/C$ ratio was positively correlated with the change of CCOS ($p = 0.001$, $r = 0.897$) and $\Delta C2-7A$ ($p = 0.002$, $r = 0.560$). There was also a correlation between the Δ JOA score (the change rate of the JOA score) and $\Delta C2-7A$ ($p = 0.012$, $r = 0.467$) (Fig. 5C–E) However, there was no correlation between the improvement rate of the JOA score and the resolution ratio of the syrinx, and no correlation was seen between the Δ Syrinx length ratio and any other factors.

DISCUSSION

For syringomyelia associated with CM-I,^{19–21} patients are plagued by a series of neurological symptoms such as suspended sensory disorder, hypoesthesia, amyotrophy, or weakness of limbs. Quite a few studies have been carried out to explore the relationships between syringomyelia formation and CSF circulation obstruction in the subarachnoid space.^{22,23} However, its specific mechanism remains controversial.

Decompression surgery with or without duraplasty is commonly used to control the development of syringomyelia, which has been reported in previous studies.^{24–27} Although tra-

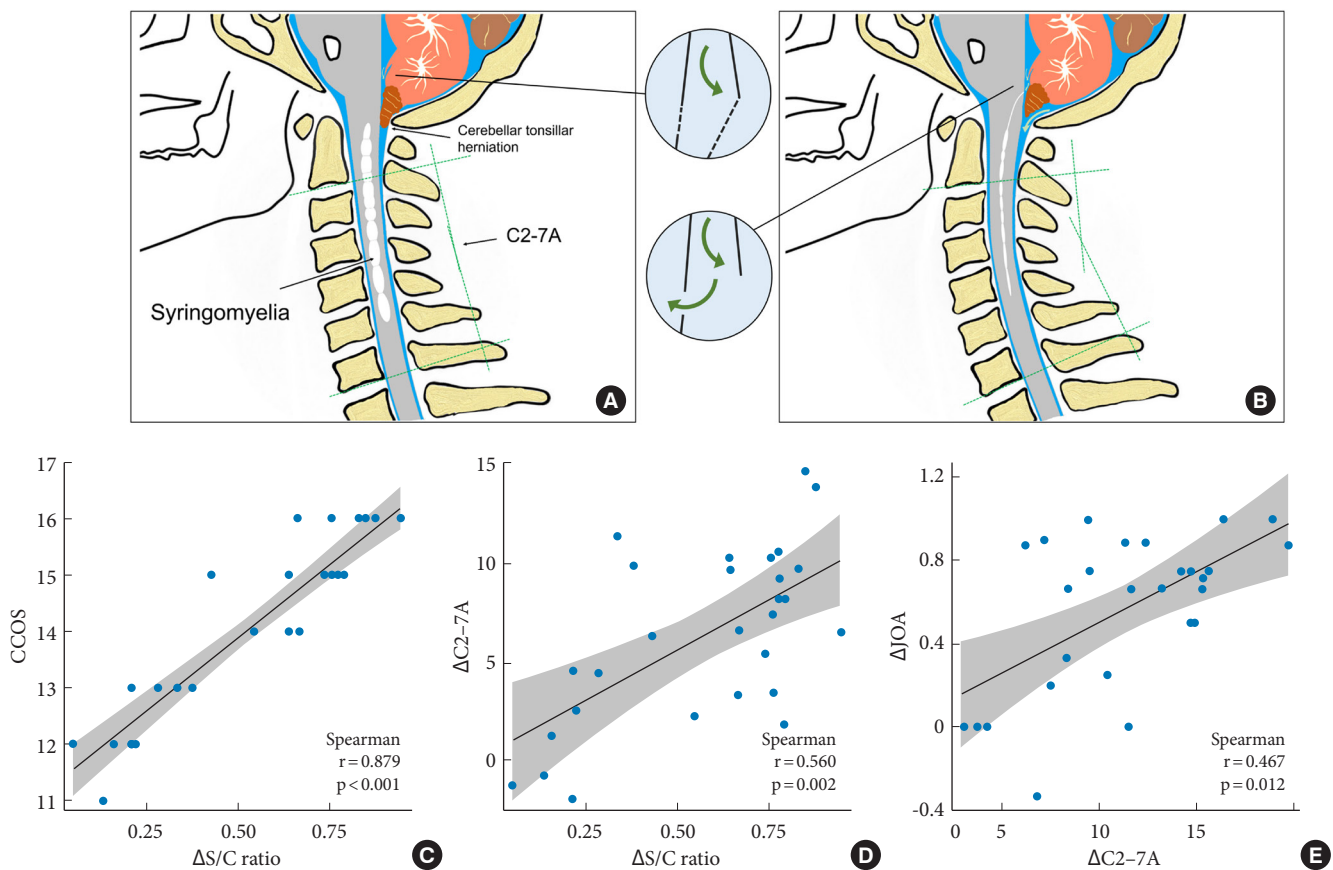


Fig. 5. Schematic drawing and the linear correlation diagram for moniliform group. After Foramen magnum and Magendie dredging, syrinx resolution may coexist with the cervical sagittal realignment, especially for moniliform syrinx. (A, B) Spearman correlation analysis for moniliform type showed that $\Delta S/C$ ratio was positively correlated with change of CCOS ($p=0.001$, $r=0.897$) (C) and $\Delta C2-7A$ ($p=0.002$, $r=0.560$) (D). (E) There was also a correlation between ΔJOA score (the change rate of the JOA score) and $\Delta C2-7A$ ($p=0.012$, $r=0.467$). S/C ratio, syrinx/spinal cord ratio; CCOS, Chicago Chiari Outcome Scale; JOA, Japanese Orthopedic Association; C0–2A, upper cervical angle; C2–7A, lower cervical angle.

ditional surgical methods, such as PFD or PFDD, show certain curative effects in controlling the development of syrinx, they are not beneficial for all patients with syringomyelia. However, intradural pathology in various forms may cause CSF circulation obstruction, which makes great significance in the pathogenesis and outcome of syringomyelia. Therefore, the key to surgical treatment for syringomyelia likely settles in to relieve the obstruction of the foramen magnum and foramen of Magendie.^{6,7}

There is a strong association between syringomyelia and scoliosis, but there does not seem to be a significant relationship between CM-I and scoliosis in the absence of syringomyelia.¹¹⁻¹³ Syringomyelia is known to be frequently accompanied by scoliosis in some patients, possibly because of asymmetric spinal cord injury (SCI) due to chronic expansion of the central canal in the spinal cord, which means that syringomyelia may be an

aggravating factor in spinal alignment. Similarly, cervical sagittal alignment reflects the cervical physiological curvature, syringomyelia as its possible aggravating factor, while there are few studies on the relationship between them.

The mean value of the C2–7A in 127 CM-I patients with syringomyelia was less lordotic than in 32 CM-I patients without syringomyelia in our center (-13.5 ± 7.5 vs. -20.7 ± 8.4 , $p < 0.05$). We could initially infer that space occupying syrinx formation caused by the obstruction of CSF circulation might drive the loss of cervical physiological curvature as an adaptive response. Combined with the patients' preoperative clinical and radiologic characteristics, we continued to explore the differences in the distribution of cervical curvature at baseline. The results showed that the distribution of preoperative cervical lordosis was different in various types of syringomyelia. Specifically, straight or kyphotic cervical alignment was more common in the monili-

form type of syrinx. Additionally, patients with cervical alignment straight or kyphotic tend to have a short natural history. However, cervical curvature in patients with CM-I related syringomyelia was not related to syrinx length, S/C ratio, deviation, location, or other clinical characteristics. Why the straight or kyphotic cervical alignment is more concentrated in the type of moniliform syrinx has aroused our interest in further exploration.

Although the relationship between CM-I related syringomyelia and scoliosis is not fully understood. Some scholars once speculated that the syringomyelia may affect or even damage neurons in the spinal cord responsible for muscle in charge of trunk balance, thereby influencing the spinal sagittal alignment.²⁸ We speculated that the development of syringomyelia could also bring certain changes to the cervical sagittal alignment as the result of chronic central SCI, which was related to the faster progression of enlargement of the central canal. Usually, the cross-fibers in front of the central canal bear the brunt, which is presented as the typical suspended sensory disorder. During the further enlargement, the anterior horn neurons and longitudinal conduction tracts were then involved in appearing manifestations such as amyotrophy, hypoesthesia, or weakness of limbs. However, whether this process is reversible depends on the degree of disturbance in the internal environment of the SCI and the degree of neuronal damage.

The decreasing of the syringomyelia size is accompanied by the stabilization or improvement of scoliosis in most patients following decompression surgery, so neurosurgical decompression is recommended for patients with CM-I, SM, and scoliosis with its potential to treat all 3 conditions at the same time.^{14,15} Since early decompression could improve neurological status and scoliosis in patients with syringomyelia associated with CM-I, accordingly, intradural decompression for syringomyelia by FMMD may also help in restoring the cervical sagittal alignment. In our results, after FMMD, syringomyelia resolved in 108 patients (85.0%), along with significant improvements in cervical sagittal alignment and JOA score. The mean value of CCOS at the last follow-up was 13.1 ± 2.8 (about 80% of the patients got a score of $CCOS \geq 13$). Therefore, FMMD was effective for CM-I patients with syringomyelia in terms of improving neurological symptoms in the current study and is considered to be an effective surgical technique for not only syringomyelia resolution but also helping in cervical sagittal realignment. We speculate that this benefits from the elimination of intradural obstruction through FMMD, which might be conducive to a more complete restoration of CSF circulation,

thereby reversing the adverse effects of chronic SCI and sagittal alignment imbalance caused by unrestricted enlargement of the syrinx (Fig. 5A, B).

The above parameters with statistically significant differences before and after surgery were then compared among 4 groups of different syrinx types. Compared with other groups, the syrinx with moniliform type showed the most significant changes in $\Delta C2-7A$, and $\Delta S/C$ ratio after surgery, and the postoperative CCOS of it is relatively better. In addition, the cervical sagittal realignment of the moniliform syrinx is the most obvious after surgery in the 4 different morphological kinds of syringomyelia (Fig. 4E).

Therefore, we propose that the moniliform type of syrinx may be a special kind of configuration. Its particularity lies in that the reactivity following the change of CSF circulation seems to be more sensitive, and it shows stronger adaptability and reducibility than other types of syringomyelia, which not only reflects in the greater changes in the cervical lordosis during the syrinx formation with a shorter natural history but also in the more obvious syrinx resolution and a relatively better prognosis after removing the intradural obstruction and dredging the circulation of CSF. In terms of syrinx width, both moniliform type and distended type belong to the category with a larger S/C ratio; from the perspective of syrinx morphology, syrinx separation is the typical imaging manifestation for moniliform type, and some studies have preliminarily confirmed syrinx separation might be related with the ependymal cells surrounding the central canal of the spinal cord,^{29,30} which would be a source of endogenous stem cells, heralding a potential endogenous approach to SCI repair. While it is still unknown the specific pathophysiological mechanism of syrinx separation in chronic SCI.

Correspondingly, further analysis suggested that the $\Delta S/C$ ratio was positively correlated with both $\Delta C2-7A$ and CCOS in the moniliform syrinx. With the restoration of the CSF circulation following FMMD, the resolution of syringomyelia also co-existed with the improvement of cervical lordosis angle. Our results proposed that some relationships exist among syringomyelia, cervical sagittal alignment, and neurological prognosis, revealing that both syrinx resolution and cervical sagittal alignment might be predictive factors for prognosis, especially in the typical moniliform type.

Given that musculoskeletal abnormalities are part of the initial presentations of intraspinal lesions in a significant proportion of cases, the pre- and postoperative multifactorial analysis should be taken into account in patients with syringomyelia,

especially for the sagittal plane presented on lateral plain radiographs of the spine. Spinal deformities may also serve as a certain reference value for spinal cord dysfunction in the pathogenesis and clinical manifestations. For example, Zhu et al.³¹ found the convexity of thoracic vertebrae in idiopathic syringomyelia patients associated with the deviated side of the syrinx. Ono et al.¹⁷ concluded that scoliosis could be a predictor of the prognosis in CM-I patients with syringomyelia. Ouellet et al.³² also proved that thoracic hyperkyphosis in the sagittal plane may be used as an indicator of the presence of syringomyelia. All of them reinforced the necessity of assessing sagittal plane deformity for the predisposition to syringomyelia.³³ Therefore, from the overall prognosis of surgical decompression for syringomyelia in CM-I patients, the multivariate factors including CCOS, syrinx characteristics on MRI, and cervical sagittal alignment could evaluate the surgical outcome more comprehensively, especially for the specific syrinx phenotype.

In our opinion, the syringomyelia configuration on MRI and cervical sagittal alignment on x-ray radiographs might complement each other in the clinical diagnosis and treatment of CM-I with syringomyelia. To evaluate the prognosis of CM-I patients with syringomyelia following PFD, attention should be given only to the change of the intramedullary syrinx but also to the improvement of the cervical sagittal alignment.

Our findings have supplemented and improved based on the previous studies. Some of the propositions we put forward have a certain significance in clinical and mechanism research. On the one hand, we should pay attention to the significance of the cervical sagittal alignment in the process of syringomyelia development or disappearance after decompression, such as evaluating the prognosis of patients with syringomyelia through sagittal plane presented on lateral plain radiographs; in addition, for some patients with the cervical sagittal deformity (straight or lordotic), they may be able to return to normal on their own to a certain extent as the syrinx resolution following decompression surgery. On the other hand, we should attach importance to the special type of moniliform syringomyelia. It is characterized by typical syrinx separation on imaging morphology, which we have initially confirmed in rat models of syringomyelia.³⁰ However, that still needs to be better understood whether it belongs to a transitional state of syringomyelia or a special configuration, which will certainly lead us to potential implications for the exploration of the hydrodynamics and biological mechanisms during syringomyelia formation and resolution.

But as a retrospective analysis, selection bias is hard to avoid

in this study. The duration of clinical observation was not long enough, and the results cannot provide the relationship between the syringomyelia resolution and cervical sagittal alignment over a longer period of follow-up. In addition, it is necessary to conduct a more specific analysis for patients in different age groups. However, given the limited number of patients, it seems not realistic to conduct randomized controlled trials.

CONCLUSION

The preoperative straight or kyphotic cervical alignment is more common in the moniliform syrinx. After FMMD, the syringomyelia resolution may be accompanied by the lower cervical lordosis recovery accordingly. In addition, the relationship between syrinx resolution and cervical sagittal realignment might have a certain reference value for the prognosis of CM-I patients with syringomyelia following surgery, especially in the moniliform syrinx.

NOTES

Conflict of Interest: The authors have nothing to disclose.

Funding/Support: This study received no specific grant from any funding agency in the public, commercial, or not-for-profit sectors.

Author Contribution: Conceptualization: CL, FJ; Data curation: CL, JG, ZL, KW, WD, ZC, HW; Formal analysis: CL, FJ; Methodology: CL, L Ma, JG, ZL, KW, WD, ZC, HW; Project administration: CL, FJ; Visualization: CL, LM, J Guan, ZL, KW, WD, ZC, HW, FJ; Writing - original draft: CL; Writing - review & editing: CL, FJ.

ORCID

Chunli Lu: 0000-0003-2825-5833

Longbing Ma: 0000-0003-1295-5974

Zhenlei Liu: 0000-0003-0827-4420

Wanru Duan: 0000-0003-4751-3666

Zan Chen: 0000-0002-0104-115X

Hao Wu: 0000-0002-8118-9989

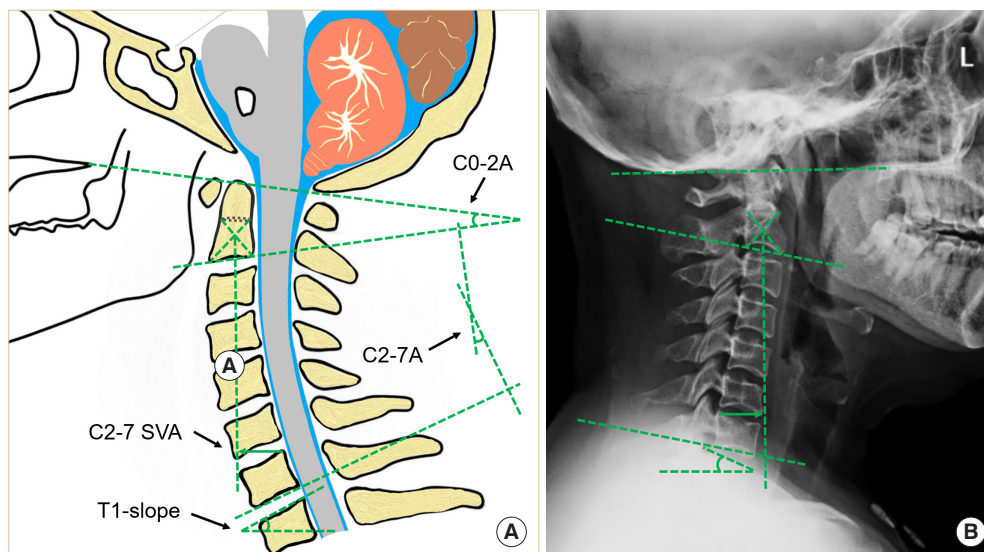
Fengzeng Jian: 0000-0001-7860-278X

REFERENCES

1. Olivero WC. Pathogenesis of syringomyelia. *AJNR Am J Neuroradiol* 1999;20:2024-5.
2. Meadows J, Kraut M, Guarnieri M, et al. Asymptomatic

- Chiari Type I malformations identified on magnetic resonance imaging. *J Neurosurg* 2000;92:920-6.
3. Milhorat TH, Chou MW, Trinidad EM, et al. Chiari I malformation redefined: clinical and radiographic findings for 364 symptomatic patients. *Neurosurgery* 1999;44:1005-17.
 4. Alperin N, Loftus JR, Bagci AM, et al. Magnetic resonance imaging-based measures predictive of short-term surgical outcome in patients with Chiari malformation Type I: a pilot study. *J Neurosurg Spine* 2017;26:28-38.
 5. Taylor DG, Chatrath A, Mastorakos P, et al. Cerebrospinal fluid area and syringogenesis in Chiari malformation type I. *J Neurosurg* 2020;134:825-30.
 6. Guan J, Yuan C, Zhang C, et al. A novel classification and its clinical significance in Chiari I malformation with syringomyelia based on high-resolution MRI. *Eur Spine J* 2021;30:1623-34.
 7. Guan J, Yuan C, Zhang C, et al. Intradural pathology causing cerebrospinal fluid obstruction in syringomyelia and effectiveness of Foramen Magnum and Foramen of Magendie dredging treatment. *World Neurosurg* 2020;144:e178-88.
 8. Luciano MG, Batzdorf U, Kula RW, et al. Development of common data elements for use in Chiari malformation type I clinical research: an NIH/NINDS project. *Neurosurgery* 2019;85:854-60.
 9. Aliaga L, Hekman KE, Yassari R, et al. A novel scoring system for assessing Chiari malformation type I treatment outcomes. *Neurosurgery* 2012;70:656-64.
 10. Greenberg JK, Yarbrough CK, Radmanesh A, et al. The Chiari Severity Index: a preoperative grading system for Chiari malformation type I. *Neurosurgery* 2015;76:279-85.
 11. Hwang SW, Samdani AF, Jea A, et al. Outcomes of Chiari I-associated scoliosis after intervention: a meta-analysis of the pediatric literature. *Childs Nerv Syst* 2012;28:1213-9.
 12. Noureldine MHA, Shimony N, Jallo GI, et al. Scoliosis in patients with Chiari malformation type I. *Childs Nerv Syst* 2019;35:1853-62.
 13. Strahle J, Smith BW, Martinez M, et al. The association between Chiari malformation type I, spinal syrinx, and scoliosis. *J Neurosurg Pediatr* 2015;15:607-11.
 14. Sengupta DK, Dorgan J, Findlay GF. Can hindbrain decompression for syringomyelia lead to regression of scoliosis? *Eur Spine J* 2000;9:198-201.
 15. Verhofste BP, Davis EA, Miller PE, et al. Chiari I malformations with syringomyelia: long-term results of neurosurgical decompression. *Spine Deform* 2020;8:233-43.
 16. Hyun SJ, Moon KY, Kwon JW, et al. Chiari I malformation associated with syringomyelia: can foramen magnum decompression lead to restore cervical alignment? *Eur Spine J* 2013;22:2520-5.
 17. Ono A, Suetsuna F, Ueyama K, et al. Surgical outcomes in adult patients with syringomyelia associated with Chiari malformation type I: the relationship between scoliosis and neurological findings. *J Neurosurg Spine* 2007;6:216-21.
 18. Scheer JK, Lau D, Smith JS, et al. Alignment, classification, clinical evaluation, and surgical treatment for adult cervical deformity: a complete guide. *Neurosurgery* 2021;88:864-83.
 19. Oldfield EH. Pathogenesis of Chiari I - pathophysiology of syringomyelia: implications for therapy: a summary of 3 decades of clinical research. *Neurosurgery* 2017;64(CN_suppl_1):66-77.
 20. Heiss JD, Snyder K, Peterson MM, et al. Pathophysiology of primary spinal syringomyelia. *J Neurosurg Spine* 2012;17:367-80.
 21. Heiss JD, Jarvis K, Smith RK, et al. Origin of syrinx fluid in syringomyelia: a physiological study. *Neurosurgery* 2019;84:457-68.
 22. Alperin N, Loftus JR, Olliu CJ, et al. Magnetic resonance imaging measures of posterior cranial fossa morphology and cerebrospinal fluid physiology in Chiari malformation type I. *Neurosurgery* 2014;75:515-22.
 23. McGirt MJ, Nimjee SM, Fuchs HE, et al. Relationship of cine phase-contrast magnetic resonance imaging with outcome after decompression for Chiari I malformations. *Neurosurgery* 2006;59:140-6; discussion 140-6.
 24. Klekamp J. Surgical treatment of Chiari I malformation-analysis of intraoperative findings, complications, and outcome for 371 foramen magnum decompressions. *Neurosurgery* 2012;71:365-80; discussion 380.
 25. De Vlieger J, Dejaegher J, Van Calenbergh F. Posterior fossa decompression for Chiari malformation type I: clinical and radiological presentation, outcome and complications in a retrospective series of 105 procedures. *Acta Neurol Belg* 2019;119:245-52.
 26. Feghali J, Xie Y, Chen Y, et al. External validation of current prediction systems of improvement after decompression surgery in Chiari malformation type I patients: can we do better? *J Neurosurg* 2020;134:1466-71.
 27. Rangari K, Das KK, Singh S, et al. Type I Chiari malformation without concomitant bony instability: assessment of different surgical procedures and outcomes in 73 patients. *Neurospine* 2021;18:126-38.
 28. Huebert HT, MacKinnon WB. Syringomyelia and scoliosis.

- J Bone Joint Surg Br 1969;51:338-43.
29. Radojicic M, Reier PJ, Steward O, et al. Septations in chronic spinal cord injury cavities contain axons. *Exp Neurol* 2005; 196:339-41.
30. Ma L, Yao Q, Zhang C, et al. Chronic extradural compression of spinal cord leads to syringomyelia in rat model. *Fluids Barriers CNS* 2020;17:50.
31. Zhu Z, Sha S, Chu WC, et al. Comparison of the scoliosis curve patterns and MRI syrinx cord characteristics of idiopathic syringomyelia versus Chiari I malformation. *Eur Spine J* 2016;25:517-25.
32. Ouellet JA, LaPlaza J, Erickson MA, et al. Sagittal plane deformity in the thoracic spine: a clue to the presence of syringomyelia as a cause of scoliosis. *Spine (Phila Pa 1976)* 2003; 28:2147-51.
33. Thakar S, Sivaraju L, Jacob KS, et al. A points-based algorithm for prognosticating clinical outcome of Chiari malformation Type I with syringomyelia: results from a predictive model analysis of 82 surgically managed adult patients. *J Neurosurg Spine* 2018;28:23-32.



Supplementary Fig. 1. Schematic drawing (A) and x-ray evaluation (B) of the cervical sagittal alignment parameters. Upper cervical angle (C0-2A), lower cervical angle (C2-7A), the sagittal vertical axis (C2-7 SVA), and T1 slope.