

9-6-1968

Print- Sep. 6, 1968

Ken Davis

Follow this and additional works at: <https://neiudc.neiu.edu/print>

Recommended Citation

Davis, Ken, "Print- Sep. 6, 1968" (1968). *Print (1968-1987)*. 22.
<https://neiudc.neiu.edu/print/22>

This Newspaper is brought to you for free and open access by the NEIU Student Newspapers at NEIU Digital Commons. It has been accepted for inclusion in Print (1968-1987) by an authorized administrator of NEIU Digital Commons. For more information, please contact h-owen3@neiu.edu, l-wallis@neiu.edu.

The Northeastern **PRINT**

VOLUME 2, NO. 2
SEPTEMBER 6, 1968

It gives me great pleasure to welcome all new students, freshmen and transfers alike, to Northeastern.

The process of becoming educated depends upon active participation in which one learns and contributes, both in class and outside of them. In class, the gathering of knowledge is necessary -- not as an end in itself but as a means to other ends.

The proper use of knowledge provides a basis for problem solving and a creative approach to problem solving is, it seems to me, the essence of education.

In addition to developing your intellectual potential through classroom learning, it is my hope that you will take full advantage of other campus activities, as although it seems unnecessary to remark, a great deal of learning goes on in informal, out of class interchanges. The newspaper, the annual, team competition, the band, the choir, drama groups, television, and the many clubs offer participation which can enhance your education.

I urge all of you to take full advantage of your opportunities to obtain an education and I hope you will find your experience here stimulating and rewarding.

I am pleased you have joined us at Northeastern and I know that I speak for all, faculty, students, staff and administration when I say that we look forward to working with you.

Jerome Sachs
President



Photo
by
Stockmann

Welcome to NISC. As you get acquainted with your new home, you will quickly become familiar with the few liberal regulations here. There would be no reason for our repeating what may be found in your official student handbooks.

We trust you will like what you find here. Therefore, we present a lighter side of NISC life, hopefully for your enjoyment, as compiled by our staff comic, Gene Corey.

—K.D.

FRESHMAN

Welcome to Hexagon Country. The purpose of this column is to acquaint freshmen with many of the important features and wonders of Northeastern Illinois State College not mentioned in school folders, catalogues, and other propagandist literature.

There are no bells, buzzers, or gongs in the hallways. There is a mysterious voice, however, that comes out of holes in the ceiling at five minutes before the hour and delivers inspired messages. Do not blindly accept everything he says. The voice could become Big Brother someday.

All students are now experiencing an "I remember when." "I remember whens" are not particularly pleasant to live through, but they can work magic with impressionable minds of the future.

Northeastern's campus is small, cramped, and overcrowded. In a few short years, through miraculous changes, it will offer a more open and sprawling atmosphere. Now, however, you're paying for the later right to say,

"When I was young and attending Northeastern like yourself, I REMEMBER WHEN. . ."

A few words of warning about the cafeteria—the lunch ladies in the coffee shop and cafeteria are nice persons, but they take fierce pride in their work. Try to refrain from calling their offerings slop until you are out of earshot. This is difficult, as they also have exceptional hearing.

On the south side of the cafeteria stands a deceptively friendly row of machines. Beware! The little men inside the machines are tricky. Such devilry as keeping money, giving wrong change, and withholding coffee cups are commonplace.

The six-story "Beehive" is where members of the administration and faculty keep as "busy as bees." Look out for the two elevators—they're operated by water buffaloes in the basement.

Do not be troubled by the different lettered sections of the building—they were created solely for confusion. Seventy per cent of Northeastern students forget the difference between the "A" and "B" wings after they learn the location of their classes.

It is futile to ask anyone about the "D" section, or the "J" building.—Most students don't know they exist. It is rumored that six faculty members' offices were placed in the mysterious "R" section, and were never seen again.

Occasional demonstrations keep the school lively, as the peaceniks sometimes march and the war mongers counter-march. Open violence is at a

minimum, but open derision is not.

The school's greatest misnomer is the "study" carrel. Various cavorting, frivolity, and general merrymaking are practiced in the semi-private compartments. Studying is a rarity. If you actually attempt to study, you'll compete with the four girls in the next carrel hooting and cackling, or the junior disc jockey down the hall who spins platters for his friends on his super-portable gramophone that he plugs into his navel.

If you are lucky enough to drive to school, you are unfortunate that there is no parking space. There's "always room for one more" in a classroom, but not in a parking lot. Good luck.

In front of the coffee shop is a vestige of 1961's Chicago Teacher's College's mass media communication system—the Student Message Center. Out of over 6,200 students enrolled last year, about four were faithful users. The messages are not usually personal, as nose and unscrupulous students outnumber by far the faithful users.

In case you were wondering, there was only one student enrolled last year whose name begins with "X." I won't identify her—she knows who she is. The girl is allotted five slots in the message center. It would be nice if somebody dropped her a line.

There are two hours each week in which there are no classes for all students. The Tuesday and Thursday "activity hours" are at 1:00 p.m. They were designed for club meetings and discussions. They are now also being used to stand in line in the coffee shop, to wait for a ping pong table in the gym, or to look for a parking space for a 2:00 o'clock class.

Lectures are interesting experiences. If you sit on the extreme right or left side, the speaker can hardly be seen, but there is a great view of the audience which is often more interesting. The personification of apathy and listlessness is an 8:00 a.m. Monday lecture, both for the faculty and students.

You'll notice the many variations of taking notes. Some have special abbreviations, some can write 500 words a minute, and some sleep. Other students are compulsive note takers, and transcribe every oral sound. Once a lecturer sneezed, and the kid next to me spit on his notes.

The wooden, flutelike instrument so popular among Northeastern's students is forced upon them. It is called the recorder, and everyone is expected to become proficient while taking music. The wild rumor about a Pied Piper Memorial Playoff at the end of each term is exaggerated.

Bughouse Square is a special program in the north side of the cafeteria every Wednesday at 3 p.m. Different topics are discussed each week alternating with folk music and guest personalities. Come if possible. It will be an enlightening experience.

Many of you will meet and get to know students of another race or ethnic background for the first time. Take advantage of the opportunity and talk to them, learn from them, and help them learn about you.

This is a major part of a true education, for all the studying in the world cannot educate a closed-minded person.

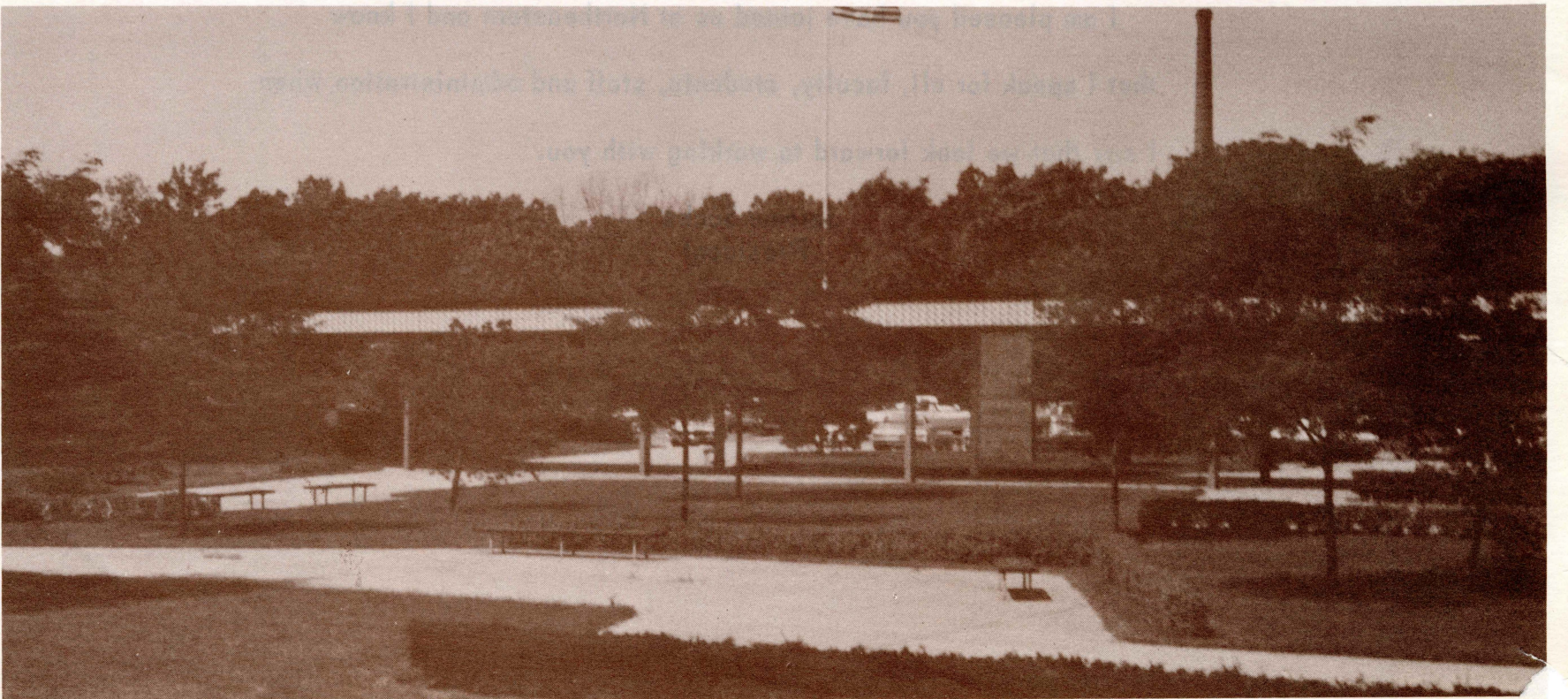


Photo
by
Bader

WIN

A gift certificate for merchandise from Follett's bookstore worth \$50!

Just fill in the blanks after these ten questions with the appropriate number. Then fill out name and address, tear out this page, and bring it to the PRINT office. Entry deadline Friday, September 13, 12:00 NOON. In case of ties, the winner will be drawn from all correct entries received. Print staff members ineligible. Enter as many times as you wish.

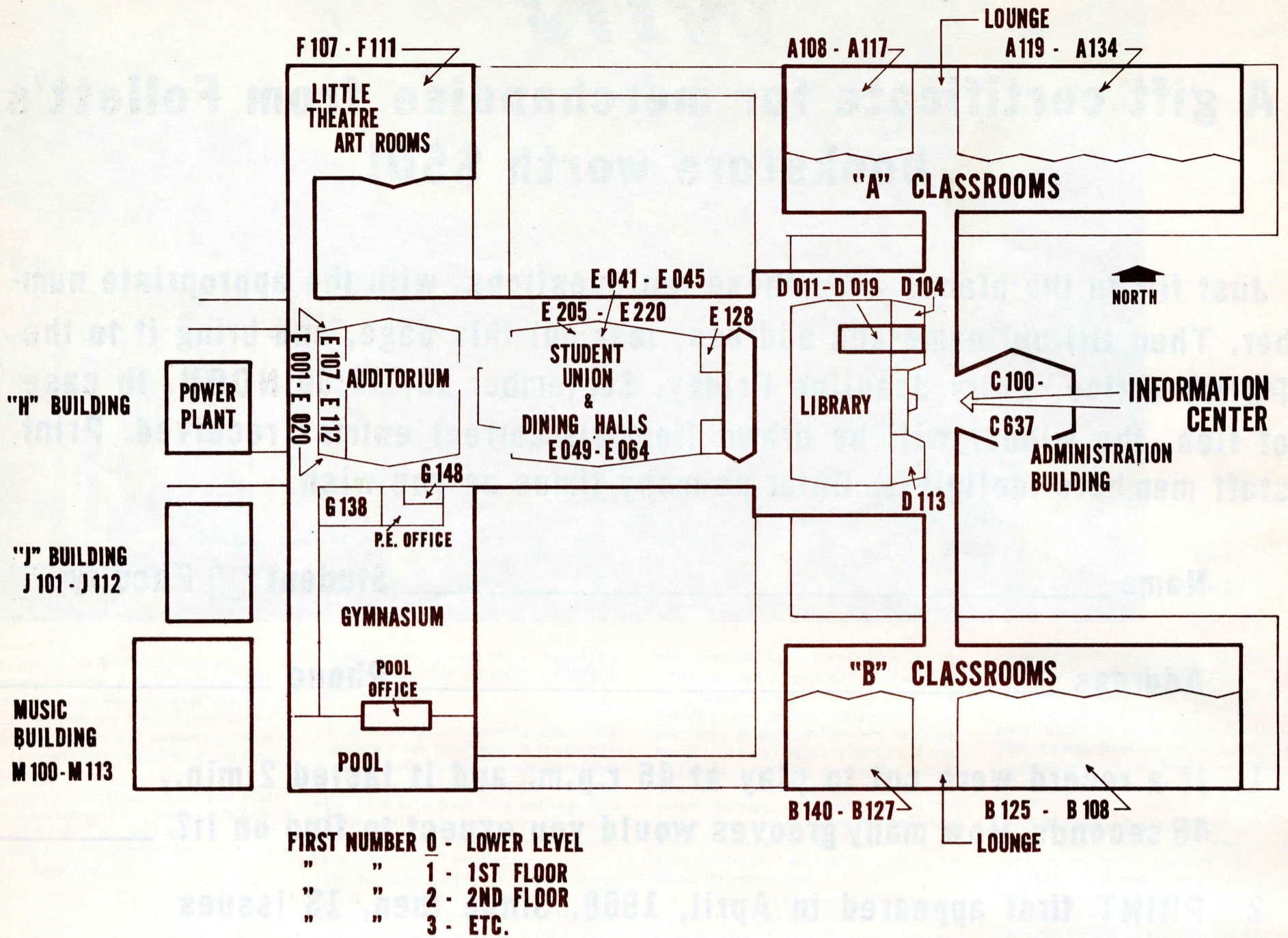
Name _____ Student Faculty

Address _____ Phone _____

- 1. If a record were cut to play at 45 r.p.m. and it lasted 2 min., 45 seconds, How many grooves would you expect to find on it? _____
- 2. PRINT first appeared in April, 1968. Since then, 13 issues have been published, What was the greatest number of pages ever to appear in a single issue? _____
- 3. How many colors are there in the flag of Monaco? _____
- 4. How many minutes elapse between eruptions of Old Faithful? _____
- 5. Northeastern's Zip Code – the last two numbers – 606 _____
- 6. How many hours ahead of Chicago time is time on Gardiner's Island, U.S.A.? _____
- 7. What is the Illinois route number for Chicago's North Ave? _____
- 8. What is the office Number of faculty member Eli M. Liebow? _____
- 9. Find the serial number of Pool table number 4 in the basement below the cafeteria. Add the numbers, then place the total in the blank. _____
- 10. How many times a year does the Beehive yearbook publish? _____

Now, total up your numbers, and place the total in Box.

TOTAL



AUDITIONS for **LYSISTRATA** THE CLASSIC GREEK COMEDY OF WAR AND PIECE,

WILL BE HELD

MONDAY, SEPT. 9 FROM 7-9 P.M. - AUDITORIUM
 TUESDAY, SEPT. 10 FROM 1-2 P.M. - LITTLE THEATER
 TUESDAY, SEPT. 10 FROM 8-10 P.M. - AUDITORIUM
 WEDNESDAY, SEPT. 11 FROM 7:30-8:30 P.M. - AUDITORIUM
 THURSDAY, SEPT. 12 FROM 8:30-10 P.M. - AUDITORIUM

OPEN TO ALL NISC STUDENTS AND FACULTY

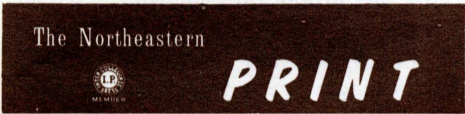
We need players, participants,
 girls, boys,
 men, women, singers, swingers,
 dancers, prancers,
 actors, actresses,
 males, females, chanters, ranters,
 introverts, controverts,
 improvisers, supervisors,
 femmes, hommes,
 students, prudence,
 Tippicanoe and YOU



A Stage Players/Speech & Performing Arts Dept. Production

THRILLS!
EXCITEMENT!
INTRIGUE!

YOUR CHANCE TO GET AWAY FROM IT ALL AND GET INVOLVED!



The Northeastern Print is published bi-weekly at Northeastern Illinois State College, 5500 North Saint Louis Ave., Chicago, Illinois 60625. Letters to the editor must be signed, but names will be withheld upon request. The opinions expressed within these pages are those of the Northeastern Print editorial board or of individual contributors exclusively. Direct comments to our office in E 045, or telephone JU 3-4050, ext. 270. Contributions to Print must be received no later than two weeks before publication date.

- Editor-in-chief Ken Davis
- Feature Editor Mickey Sagrillo
- Photograph Editor Roger Bader
- Business Manager David Green
- Office Manager Phil Volchenbaum
- Cartoonist John Podraza
- Columnists:
- Creative Experience Arnold Wolman
- Foco Conrad Pitcher
- Staff Abby, Gene Corey, John Hansen, Alicia Kouvelis, Kathy Kwasny
- Photography Staff John Podraza, Arnold Wolman
- Sponsor: E.M. Liebow

TOIL AND SLAVE IN OUR LUXURIOUS BASEMENT OFFICE!



JOIN THE

COME TO OFFICE E45 FOR AN INTERVIEW ANY TIME

SORRY

We find it necessary to discontinue all charge accounts for Northeastern students.

Effective August 20, 1968

We would like to thank all the students who have lived up to their responsibilities and paid their charge accounts promptly. However, a growing number of students have failed to meet their obligations, forcing us to discontinue charge accounts.

BECK'S BOOK STORE

FOLLETT'S BOOK STORE

