

2010

EPV 044 Munoz Field Notes 2010

Melissa Munoz

Follow this and additional works at: <https://digital.kenyon.edu/honduras>



Part of the Archaeological Anthropology Commons

Recommended Citation

Munoz, Melissa, "EPV 044 Munoz Field Notes 2010" (2010). *Four Valleys Archive*. Paper 96981.
<https://digital.kenyon.edu/honduras/96981>

This Field Notes is brought to you for free and open access by the Anthropology at Digital Kenyon: Research, Scholarship, and Creative Exchange. It has been accepted for inclusion in Four Valleys Archive by an authorized administrator of Digital Kenyon: Research, Scholarship, and Creative Exchange. For more information, please contact noltj@kenyon.edu.

16 June 2010

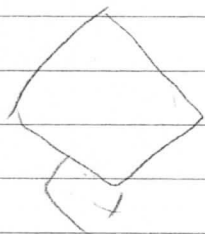
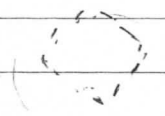
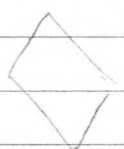
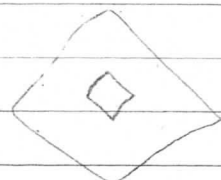
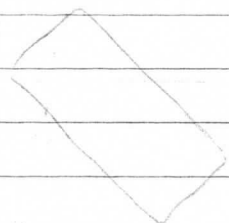
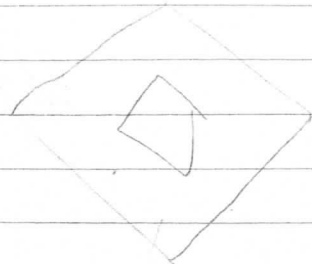
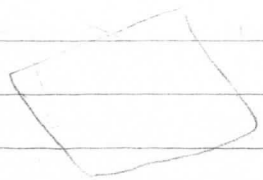
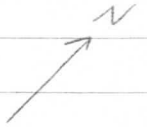
2010-44-001

Our first day of work in the field. This year we will be working at Mary's site Los Naranjitos which we have named to be a suburban elites site. We woke up really early at 5:40 a ate breakfast and prepared to go out to the field. Once at the field we mapped the site to get an idea of where we are working. In this area we will be excavating two larger building sites and two smaller building sites. I will be working on the largest building on what we believe to be the back side of the building. Jasmin and Becky will also be working on the same building but on different sites. Mike Miquel is working on the structure next to us which is the second largest and is located between the two groups of us working so we consider her ~~bisituational~~ bi-situational. Catalina and Jenica will be working on the other side of the fence on two smaller buildings. Since we are all females we have deemed our work to be called Operation Dirtbunny. Once everything was established who was working where Bell and the elites had to set up the EDM and take measurements of the pits. This took a long time and we spent most of the time just sitting around in the sun. Fun. Before lunch we were able to put the pits in for Becky and Jasmin. Then we took a break for lunch. Hopefully we will be putting mine in next so I can get started. The elites (Bell) set up my pits on the north side of the building. There is a lot of tumble that I will have to remove. First I will take initial photos of the site then remove the rocks. In each picture the trowl will be pointing north. I started moving the rocks starting at the bottom and then moving up. I recieved help from Salva and we got the rocks moved very quickly. We had to wait again because when Bell measured with the EDM they did not put the squares in. While waiting I went over to Becky's site and helped there while they put in my pits. End of day

W N E
S

Los Narajitos

Op 10

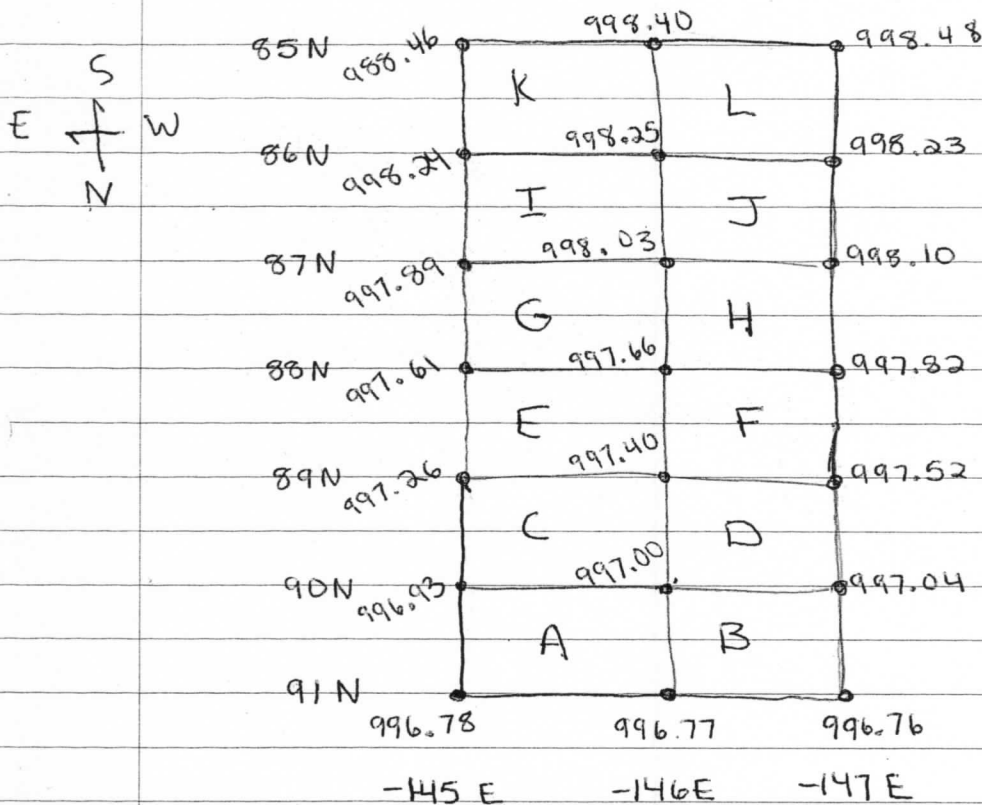


Structure 12

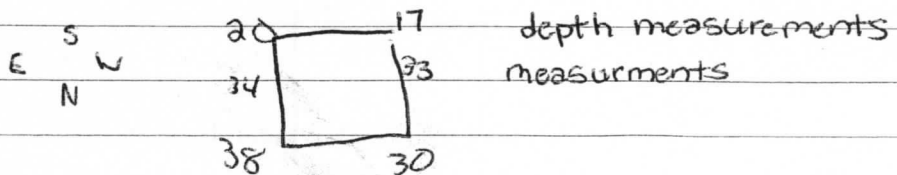
19 June 2010

2010-44-02

Back out in the field and all my pits are set up so I can start working today. I took some pictures of the site with all the pits in. Then began working. Bell came over and gave me the elevations for my site. I started excavating at the bottom left with excavation unit A.



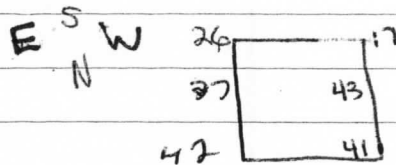
While I went to help Becky and Jasmine, Tino kept working and we went down further than Mary wanted but we did not find any artifacts anyways so it is not that important. In the picture for 07/10/32 CU A or Lot 1 we had to place a rock to hold the rock in the southeast corner because it kept falling.



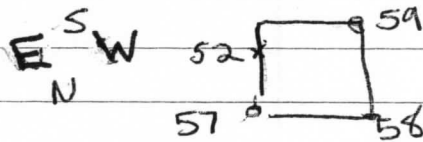
19 June 2010

2010-44-03

I closed lot A1 and continued in excavation unit A hoping to find more artifacts if we continued to dig down. A few minutes within starting we found some ceramic. Finished to about 40 bgs but its time for lunch.



After lunch measured the depth but because of the rocks had to measure further in but on the lot forms I kept the depths at the corners. So I was wrong and am going to record the corner depth but use the deepest parts measured on the lot form. Mi malo. Now were are continuing down 10 more cm to see what is there in lot A.



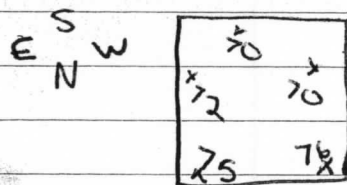
We got carried away digging again and went down to 60 cm bgs. I took some photos with all the rocks in place then realized they were tumble and removed them. We closed lot 3 and moved on to lot 4. We got started half way with lot 4 but we are leaving early because we stayed late yesterday. We get one day off before we have a full week of work.

21 June 2010

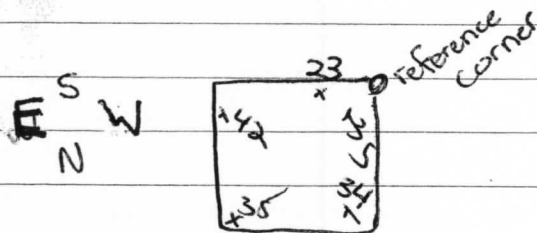
2010-44-04

On our day off we did nothing but sleep. Me, Mike, David and Roberto went with Erlend and Mirna to a house party which was very interesting so we need a day to recover. It rained alot this weekend so when we get out to the site excavation unit A had mud and water in it. Tino and my other worker who has disappeared already will continue working on EU A lot 4 while I start with Excavation unit B lot 5. We also ran out of lot form so I will be putting all the information in my notes and later tonight/when we get more forms write the information there. We finished for now going down in EU A and are moving on to EU B. We will be going down just as deep as EU A which was about 70 cm bgs. Hopefully they will go fast because we only have a half day because of the World Cup game with Honduras v. Spain.

EU A 61-75 cm bgs



We finished EU B lot 5



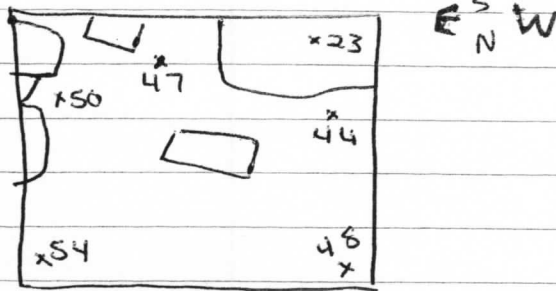
Since we do not have more lot cards, I will keep that info here. lot 6 EU B

reference corner 997.04

21 June 2010

2010-44-05

Lot 6

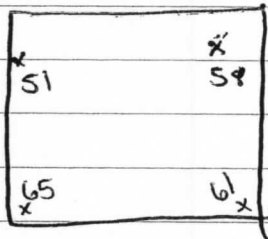


1 ceramica

41-50 bgs

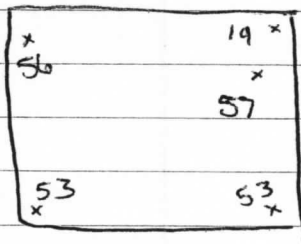
We finished lot 6 and now started lot 7 going 10 more cm down at a time until we are level with excavation unit A. I think there will be a wall in EU C+D but it will have to wait till tomorrow because we are leaving soon for the soccer game. It is time to go and we have not finished lot 7 so I will just take measurements and finish it tomorrow

Lot 7



22 June 2010

Honduras lost yesterday 2-0 to Spain which is good considering who they were playing. I had Tino and Don Umberto clean lot 7 and took measurements again just to see where we are.



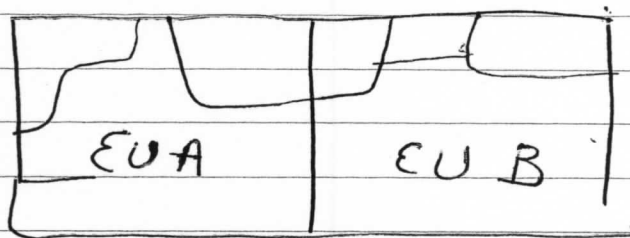
Need to go down 5 more cm in the north.

22 June 2010

2010-44-06

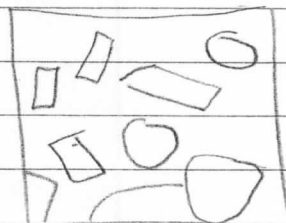
We finished lot 7 and are now going on to lot 8 to make EU B the same level as EU A. We are removing many rocks that have been determined to be tumbled. Since most of the rocks were between the two excavation units, any artifacts we found I kept under lot 08 in EU B.

We removed all the rocks except for the ones along the southern wall.



We finished lot 8 now I will be working in EU A going down 10 cm while Tino works in EU B going down the same. We got almost done going across when it was time for lunch. Stupid me had a ~~cracker~~ cracker in my bag and left it on the ground. When I came back from lunch and sat down I got eaten alive. Luckily Umberto was brave enough to get them all off my bag. The only ceramic we are finding is to the south under neath the wall of rocks. We have declared EU A + B sterile so next ~~we~~ we will move to EU C. Its finally time to remove the gianormous rock that lies between EU A and C. By the time we got it out and cleaned up it was time to go home.

EU C
S
E N W



For EU C the elevation levels will be taken at the southeastern corner of EU E

23 June 2010

2010-44-07

Last night it rained and today it is very cloudy and I can already feel light rain drops. Parts of me wants it to rain because my allergic reaction to the ant bites is starting up again and the other half want to find the wall today. We are starting off by making the line between EU A + C more visible. We will then remove the rocks in EU C until we get down to a soil change. If we do not find anything we move to EU D. Since we are doing EU C as one big lot and I am not sure which rocks to remove we will begin on EU D. I offically do not like my pit. It looks so ugly. All it is, is tumble So we decided to combine the two excavation units to become CD and make it a 1 x 2. We will only be going down to the yellow clay surface which is the living surface and the hopefully move up. I want to get the unit down to the living surface hopefully before lunch. So I made another mistake of my directions I have been doing $W_N^S E$ but it should be $E_N^S W$. So now I have to go through everything and make sure my elevations are correct. Yaya! I added my corrections in my notes just in case. I do not have white out right now so I will have to fix the lot cards after dinner. I am so excited. Tino y Umberto think they may have found a wall. The wall is about 100cm below ground surface along the southern wall. Mille is ~~happy~~ dancing for rain, I just want a wall. We will work on uncovering the rest of the wall to the left because we first found it in EU D. Then we will level it out, clean, and see if we have a wall. We think it is what is left of the wall. We took the rocks out that were in EU B so I did a cleaning lot for EU B + D. It is raining again so I am just going to have them clean it and pack up for the day.

23 June 2010

2010-44-08

S
E N W

10/32/01

EU A In NW 996.77 NE 996.78 SW 997.00 SE 996.9
Fin NW 996.70 NE 996.62 SW 996.67 SE 996.61
original 997.00

10/32/02

EU A In NW 996.70 NE 996.62 SW 996.67 SE 996.66
Fin NW 996.59 NE 996.58 SW 996.57 SE 996.63

10/32/03

EU A In NW 996.59 NE 996.58 SW 996.57 SE 996.63
Fin NW 996.42 NE 996.43 SW 996.41 SE 996.48

10/32/04

EU A In NW 996.42 NE 996.43 SW 996.41 SE 996.48
Fin NW 996.24 NE 996.25 SW 996.30 SE 996.30

10/32/05

EU B In NW 996.76 NE 996.77 SW 997.04 SE 997.00
Fin NW 996.70 NE 996.69 SW 996.69 SE 996.62
original 997.04

EU B 10/32/06

In NW 996.70 NE 996.69 SW 996.69 SE 996.62
Fin NW 996.56 NE 996.50 SW 996.60 SE 996.54

10/32/07

EU B In NW 996.56 NE 996.50 SW 996.60 SE 996.54
Fin NW 996.41 NE 996.45 SW 996.41 SE 996.56

23 June 2010

2010-44-09

10/32/08

EU B In NW 996.41 NE 996.45 SW 996.41 SE 996.56
Fin NW 996.33 NE 996.35 SW 996.31 SE 996.32

10/32/09

EU A In NW 996.24 NE 996.25 SW 996.30 SE 996.30
Fin NW 996.20 NE 996.17 SW 996.18 SE 996.22

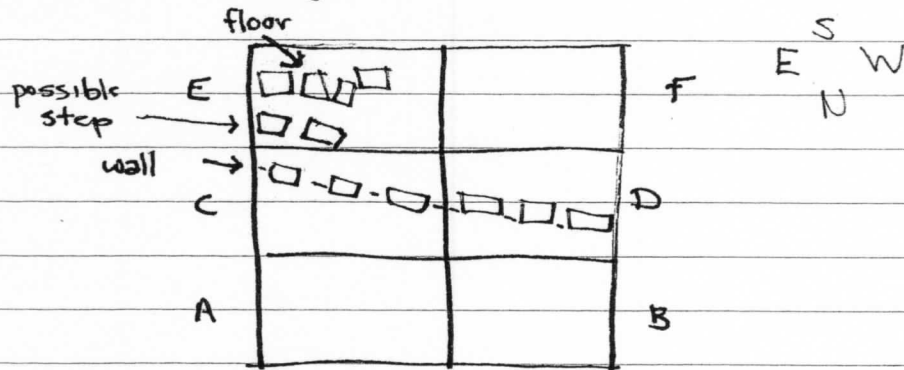
10/32/10

EU B In NW 996.33 NE 996.35 SW 996.31 SE 996.32
Fin NW 996.19 NE 996.20 SW 996.19 SE 996.20

24 June 2010

2010-44-10

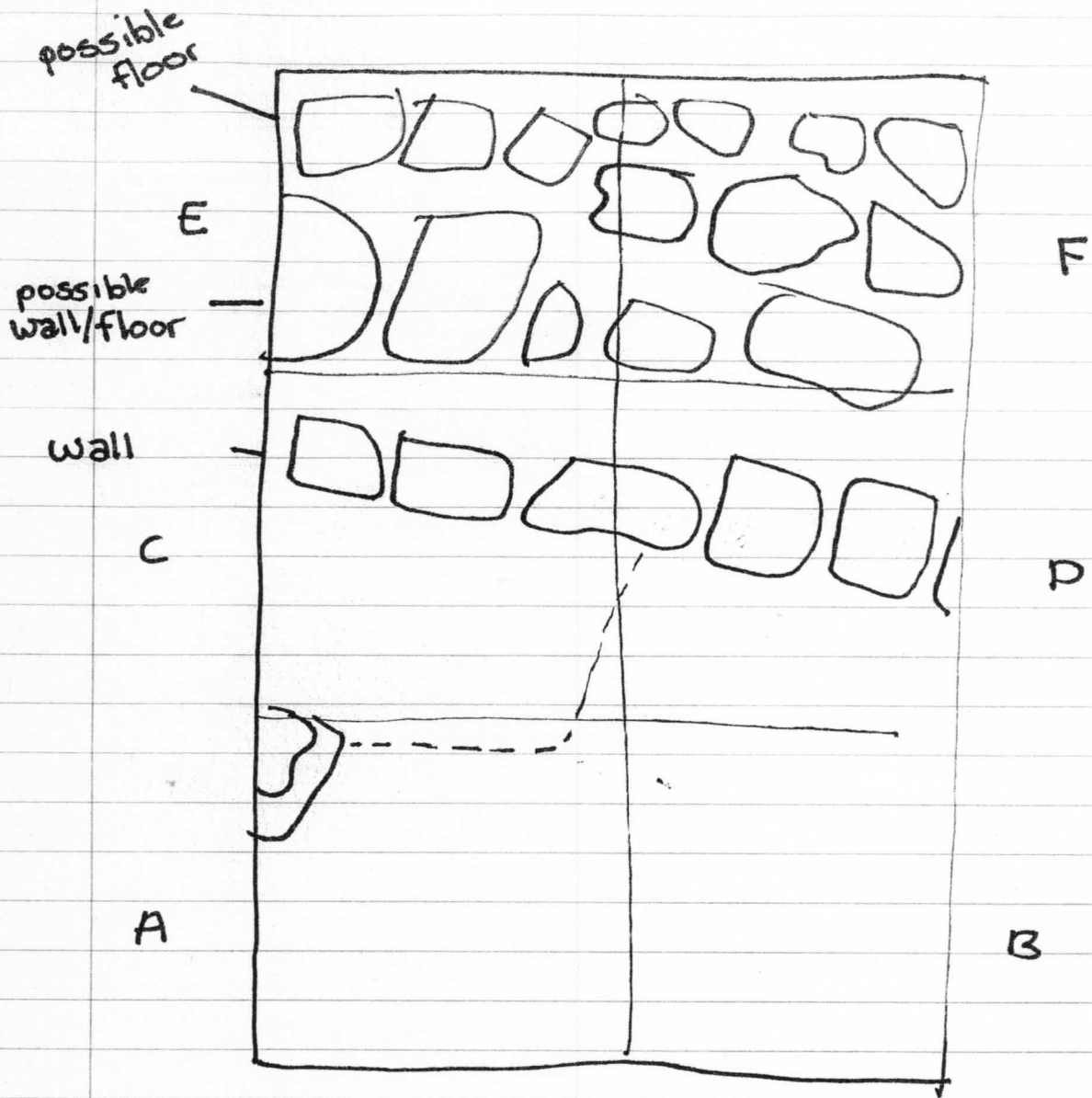
It rained alot yesterday but because we had the tarps over not too much got wet. I will take the measurements and pictures for the lot, then close them. Just to make note I started lots 11, 12, 13 on 23 June 2010. After that I will combine EU E + F into one excavation unit EF and make it a 1x2. We will do the same we did in CD and pull out all the tumble until we get down to the wall level or find another wall. So we have not gotten alot done today, it feels like a very lazy day for all of us. Jasmin finished all of her work today, so I got to have Paco, yes, who is an expert in finding walls through tumble. Now I have three workers and nothing to do, sad. Found a large piece of chert in the NE corner of EU E. We found what could be a possible step then floor, but it could also be tumble so we are moving further to the right into EU F.



We finished EU EF and left what we think might be a floor but we will not know until we open up the next unit. We started EU GH but will probably not get very far because the day is almost over.

24 June 2010

2010-44-11



25 June 2010

2010-44-12

Yesterday after work Mary fell and broke her arm so today Bell is in charge. I get to have three workers again: Tino, Umberto y Paco. Hopefully because that's at least two strange workers we will get a lot done because it is a half day since Honduras is playing again today against Switzerland. We will continue working on EU GH and hopefully will find another wall toward the south mor. Also last night Lauren came so it was very exciting night and everyone I think including the workers are tired. There is a class here to learn about what we are doing here. Their teacher spoke very good english for someone who is ~~not~~ has not been to the US and took an interest with Mike. We went around with them to each site and explained the procedures of archeology to them. When I got back they had finished EU GH, so now we are starting on EU IJ.

264	102	57
112		
116	29	23

S
E N W

No one really wants to do any work, it's just that kind of day. My workers have been standing around too long so I just had them move on to the next lot and I will draw in the rock floor for EU GH on the lot forms later. The game is going to start soon so we are packing up to leave. We got only partly the top of EU IJ done so it will have to wait till tomorrow. Since I had so many workers and could not do any digging I made charts with each EU and the amount of artifacts in each lot of each EU. This will help Cassandra in her pottery analysis. When making the charts I discovered that a majority of the artifacts were found 50-80 cm bgs.

25 June 2010

2010-H4-13

OP: 10/32

S-007 Los Naranjitos Structure 12, north side

EU	K	L	EU A	Lot	Contents	bgs 0
						10
					nothing	20
	I	J		1		30
				2	6 ceramics	40
	G	H		3	26 ceramics 1 chert	50
						60
	E	F		4	20 ceramics 2 chert 1 obsidian 1 bajareque	70
				9	7 ceramics 1 chert	80
	C	D				
	A	B				

EU B	Lot	Contents	bgs 0
			10
			20
		nothing	30
	5		40
	6	1 ceramics	50
	7	21 ceramics	60
	8	2 ceramics 2 obsidian 1 bajareque	70
	10	10 ceramics 2 chert	80
			90
			100
			110
		10 ceramics	120
			130
	12		140

25 June 2010

2010-44-14

OP: 10/32 S-007 Los Naranjitos Structure 12 north side

EU: CD		bgs 0	EU D	cleaning lot	bgs c
Lot		10	Lot		10
		20	13		20
11	35 ceramics	30			30
		40			40
		50			50
	1 bajareque	60			60
		70			70
	1 matate	80			80
		90			90
		100			100
	-- basal wall --	110		-- basal wall --	110
		120			120
		130		↓ 4 ceramics	136
		140			140

EU EF		bgs 0	EU: GH	Lot	bgs
Lot		10			10
		20			20
14		30	15		30
	22 ceramics	40			40
		50		14 ceramics	50
	1 chert	60			60
		70			70
		80			80
		90			90
		100			100
		110			110
		120			120
	2 nd horizontal course of wall	130			130

26 June 2010

2010-44-15

Last night was a good night. Honduras should have won yesterday they scored but it was called off sides even though it was not. It is really cloudy and already started sprinkling. Later today we are going to give each other tours of our pits to explain what's going on so we can get idea of what may be going on. I don't have too much to say just that we have a wall and possible floor but going up further may give us more information. After about going 20 cm bgs we stopped to look at what we had as a whole. Since Mary broke her arm and cannot come out to the field, Bell has taken over. We decide to leave EU IJ open for now and leave it and possibly go down further later. We decided to go back to the wall and make EU EF, GH level with the second layer of the wall. This involves removing rocks that may or may not have been part of a floor and is always a difficult decision to make. For these two levels of EU I am going to use the reference point for EU J SW 998.23. I also want to find the elevation for the soil change found in front of the wall and compare it to Jasmin and Becky to see if they are the same. I used the reference corner of EU J SW 998.23 and measured 164 bgs so the soil change elevation is 996.59. Jasmin is 996.44 but she says it slopes down so it could actually be higher.

	Where steril	measure reference corner	elevation	bgs	steril elevation
Mine(north)	EU B	EU J SW	998.23	164	996.59
Becky(south)	EU A	EU C NW	997.51	79	996.72
Jasmin(west)	EU B	EU B NE	996.82	38	996.44
Mike	EU O	EU C SE	997.94	91	997.03

26 June 2010

2010-H4-16

We took some time going to everyone's pit and explaining what we think is going on. It was interesting to see the other people's site and now I believe that mine is not very residential just by the fact that we have found very little pottery on this side (north), however on Becky's side (south) there has come the most pottery. We went home for lunch because the US was playing Ghana in the world cup. Sadly we lost in overtime. We finished leveling out EU Ef, Gh so now we are moving back to EU IJ. When I was looking at my pit I realized that I lost a majority of the stakes so I retied and measured each pit. Then when I was figuring the elevations for EU Ef, Gh I ~~relat~~ realized that I was getting higher elevations than when I ~~a~~ initially started with and this is due to the fact that in lots 14 of EU Ef the stakes had fallen out so where I measured may not have been the same as in previous lots. These elevations are more accurate than those in the previous lot. The same goes for EU Gh. Today is done and we get one day off yay!

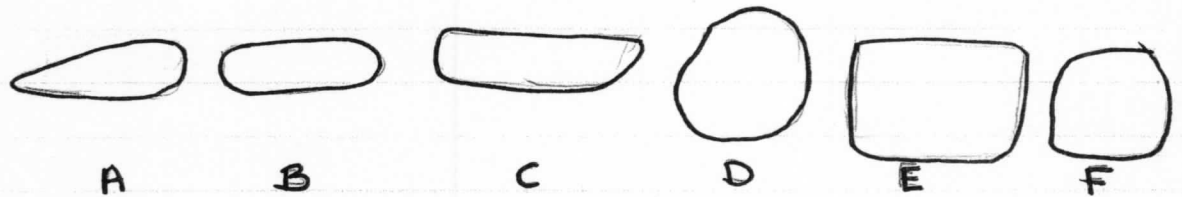
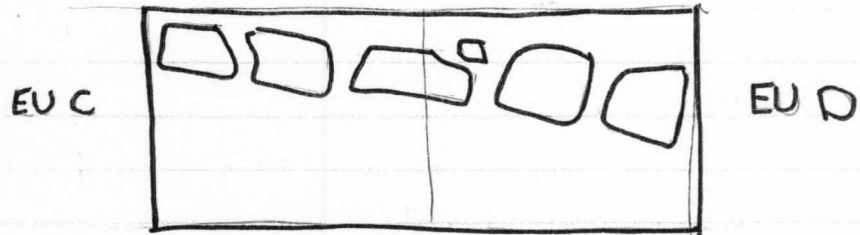
28 June 2010

I am not feeling very well. We slept in yesterday and then washed the artifacts while watching the Big Bang Theory Season 3. Today is the beginning of hell week, 6 days straight all full days. We started EU K1 and am going to the same level as EU IJ and then plan to close those two lots. Roberto y Santiago are drawing the wall and while they do that we will go to EU I and bring it down to the same level as EU Gh. We finished EU IJ + K1 and had to change the reference corner for EU IJ to the SW corner in EU K1. The day is done, one down, five to go. Tomorrow we finish EU I and do final notes.

28 June 2010

2010-44-17

Wall found on the edge between EU CD very close but not in EU EF



A: height 9 cm
length 27 cm
width 23 cm

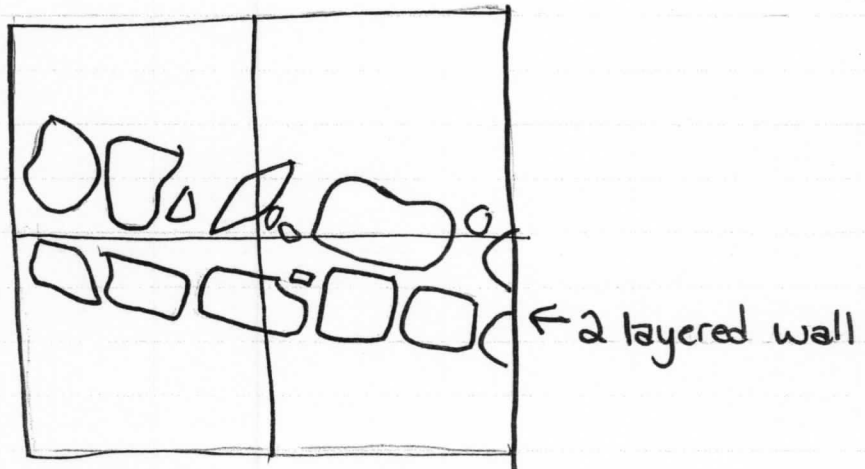
B: height 14 cm
length 34 cm
width 20 cm

C: height 17 cm
length 42 cm
width 21 cm

D: height 25 cm
length 32 cm
width 32 cm

E: height 20 cm
length 31 cm
width 34 cm

F: height 19 cm
length N/A in wall
width 21 cm



29 June 2010

2010-44-18

Final Notes OP: 10/32 5-007 Los Naranjitos Str. 12

Excavation for this supob 32 started on 19 June 2010 and ended 29 June 2010. On this operation there was a total of three workers who helped me excavate; Tino Mejia, Jose Remberto Ulloa, and Paco Aries. When beginning excavation we started on the north east corner in EU A. We found huge tumble that had fallen from the structure. After we excavated EU B we decided to go down to steril. With all the tumble we were finding we decided to combin the excavation units into 1x2 units. This made it easier to excavate because the tumble rocks we so big they would sometimes be in more than one unit. When we excavated EU CD we discovered the base of a wall 2 courses in width, 1 course in height. When continuing on in the pit it was decided that it was mainly fill.

The use of this structure was probably non residential because of the lack of artifacts recovered. The size of not only the building remains but the size of the rocks as well may suggest that the building was a cerimonial or religious center.

When looking at the soil changes in order to determin the living surface. I noticed that is sloped downward with the highest point in the south and lowering down the closer you get to the north.

29 June 2010

2010-44-19

Final Notes OP: 10/32 S-007 Los Naranjitos Str. 12

For structure 12 there was three of us working on different sides in order to discover the orientation of the building there. I excavate on the north side, Becky on the south and Jasmin to the west. Each of us has uncovered at least one basal wall so we have decided to name each of our basal walls after the three stooges. My basal wall will be Mo, Jasmin's is Curly, and Becky's is Larry. There is only one feature of a basal wall, Mo. For all measurements for the final notes I will use the datum point in the SE corner of EU X with an elevation of 998.46.

Basal Wall

Unit name	length	width	height	alignment	course
MO	min 184 cm	min 67 cm	min 13 cm	104°	height 1
	max 210 cm	max 83 cm	max 22 cm		width 2

top measure
136 cm

bottom measure
173 cm

largest rock	smallest rock	modal size	rock form	material of rock
height 22 cm	height 17 cm	height 19.5	shaped	river cobble
width 34 cm	width 27 cm	width 30.5		
length 34 cm	length 23 cm	length 28.5		

Soil chart

	color	texture
top soil	brown	crumbly
loam clay	brown	squirshy
clay	light brown yellow	hard

<u>granular structure</u>	
top soil	fine
loam clay	fine
clay	

29 June 2010

2010-44-20

Final Notes OP: 10/32 S-007 Los Naranjitos Str. 12

Using the munsie chart I was able to get the color info for each level

Taken from T.5 YR

top soil = 2.5/1 black

clay = ~~2~~ 4/4 brown

↳ specks in clay 6/6 reddish yellow

Since there were so many rocks that came out in the tumble or fill I took dimension of rocks of some large and small but many of the rocks ranged in size

width	28	33	16	22	6
height	11	16	11	8	10
length	60	39	30	19	15

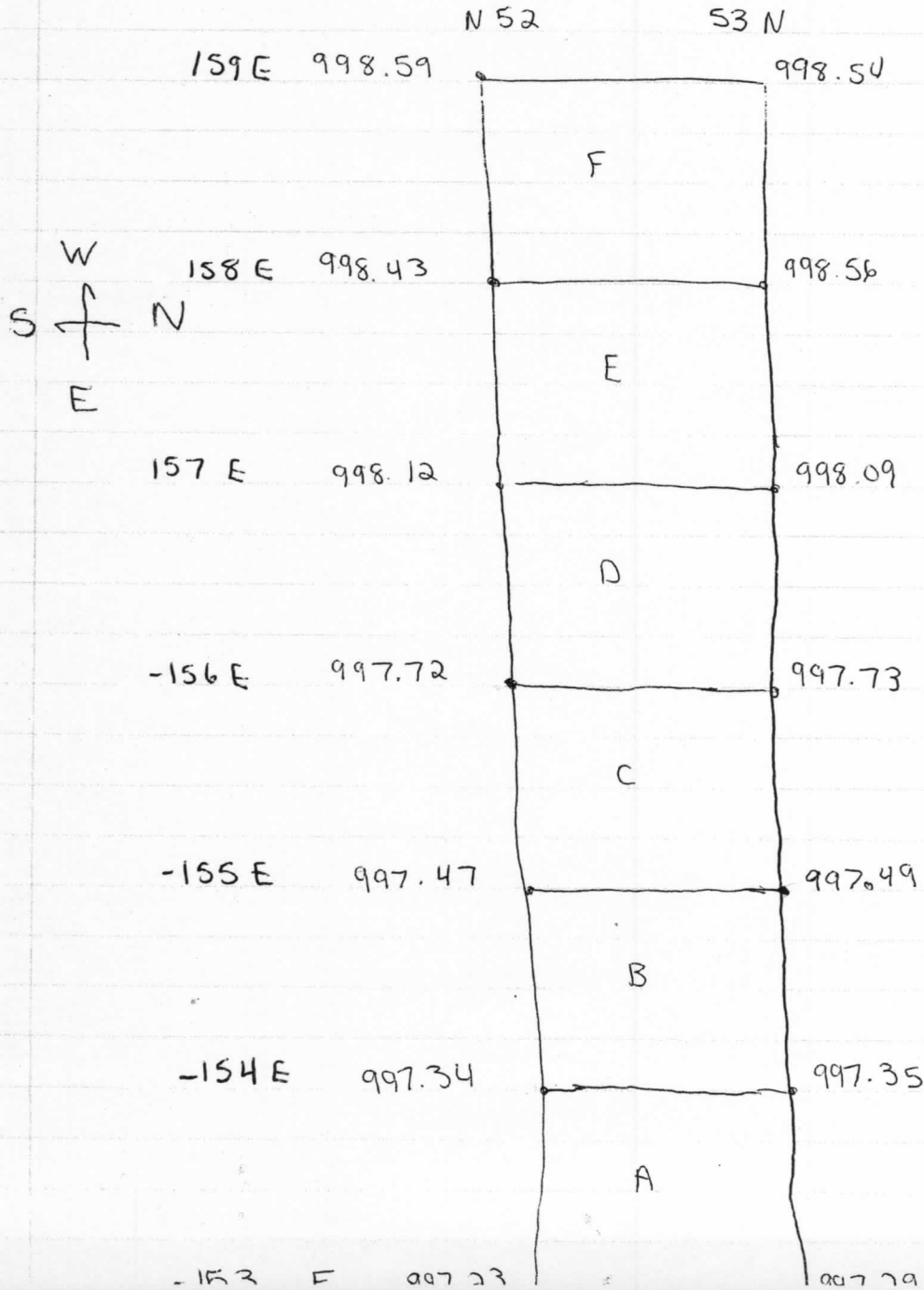
June 29, 2010

2010-44-21

Today I will be doing final notes. Not feeling alright so this might take all day. If I get done with final notes I will begin excavation on another building.

June 30, 2010

Did not finish final notes yesterday. Took final photos of each excavation unit and will then find out where I will be working next. I am now working on structure 2 doing an east west trench.



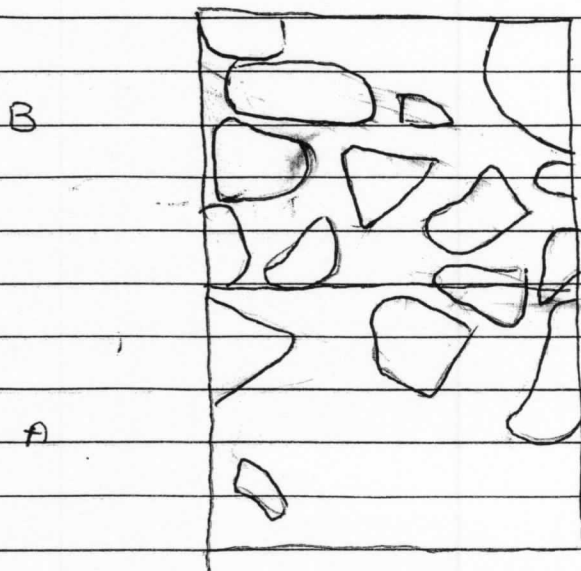
30 June 2010

2010-44-22

Started excavation on building 2. I finished EVA lot 1 and began lot 2 after lunch. In lot 1 found a piece of pottery that may have been used as an incense holder. In lot 2 so far we found the leg stump or boob of a pottery vessel. There is a slight color change in the soil but it is not sure. I will wait for the next lot. Finished lot 2 EVA now beginning lot 3. Went down barely 2 cm bgs when we hit rock. They are very flat so we will move forward an excavation unit to see if it extends. Started EU B lot 4. We found a piece of pottery that had broken into three pieces in the SE corner. We will close this lot and wait till tomorrow to start a new one.

1 July 2010

Work again. Starting lot 5 in EU B going down another 10 cm bgs. Start to see some rocks and get a slight color change. I brought my music out today and I think I broke Paco because he keeps ~~sing~~ singing the same line over and over again. We are continuing down in EU B so it level with EVA to see if these rocks belong to anything. Yaya. I found a floor. We will ~~ex~~ continue into the next unit to see if the ~~wa~~ floor reaches were a possible wall is from the surface.



1 July 2010

2010-44-23

We are going down in EU C to see if the floor might continue.

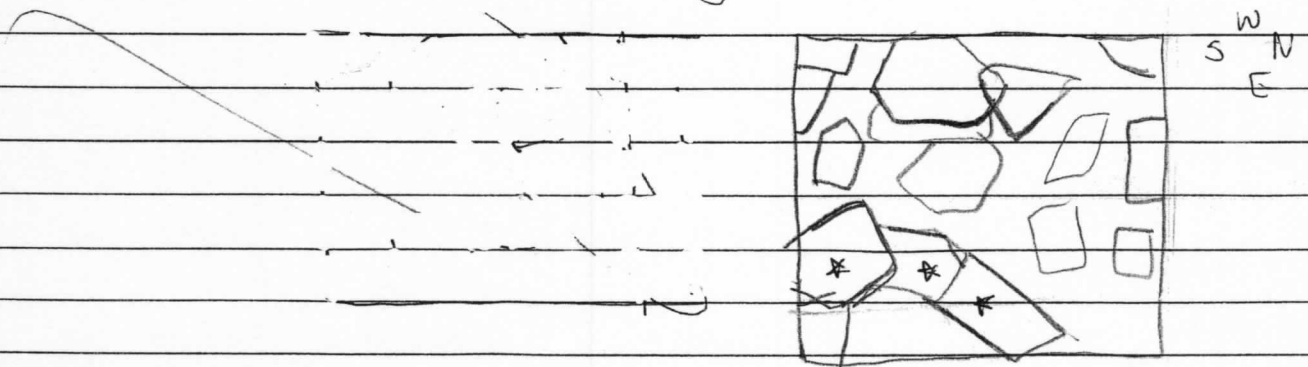
I have a visitor who is watching us work, it's awkward here.

It's lunch time. Just came back from lunch and discovered a wall. Today must be my lucky day. So we will continue going down in front of the wall to see if there are more courses.

The wall ended up being a step. Who knew. Each lot in EU C is going to extend from the front of each step down. Since my workers did so much today I will stop for now. We found a second course under the step but it will wait till tomorrow.

2 July 2010

It rained a little last night but nothing really happened to my pit. Going to level out EU C to match EU A & B. to see if the steps continue down. If they continue down then we will follow it down. I believe the step continues with the floor we encountered earlier so we will move up to EU D. EU D has a lot of what might be tumble on the surface so I will be careful when removing the rocks and documenting.

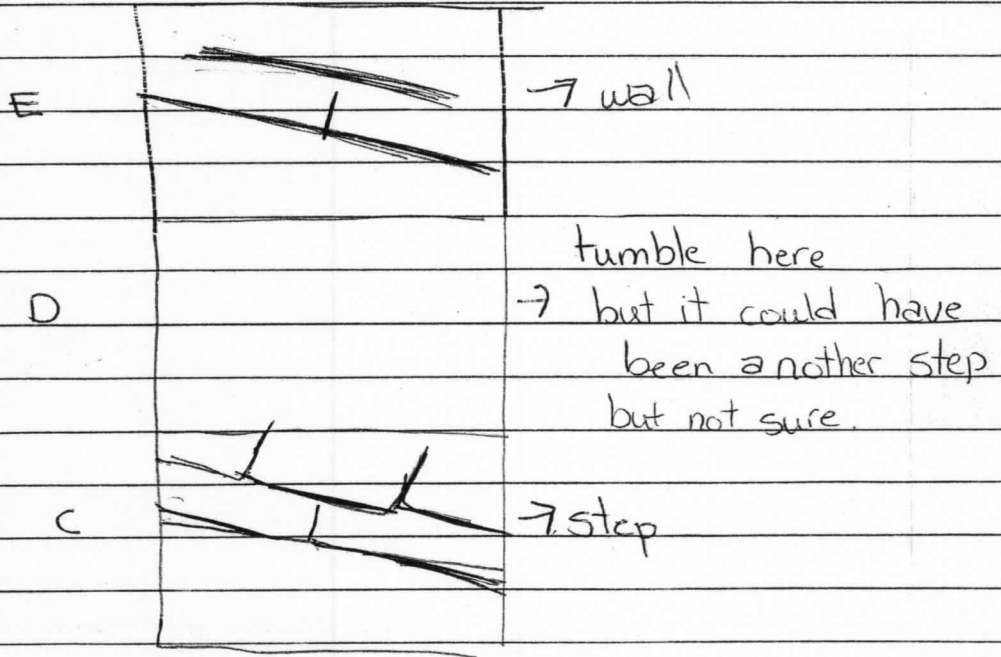


The three rocks located in the SE corner marked with stars might have been the top of the next wall/step. We went down in the NE corner to see what is there and found a flat rock about 2 cm above the top of the step. The flat rocks seem to continue in the east of the unit. There is also a slight color change that begins just above the flat rocks. With the color change being the living surface, the flat rocks might just be something.

2 July 2010

2010-44-24

I have been taking photos of the might be tumble before we remove it. I am stuck trying to decide what may have been tumble or fallen wall so I am going to wait and move up into EU E. David came out today so is not feeling good and took a nap in the pits I will wait till ~~Be~~ Bell is done putting in the points for Mike & Becky's wall structures in order to ask which rocks I should remove. I was very surprised that I found the step since Bell showed me the big hole that was looted on top of the building. I believe that we are having trouble telling exactly where the next step/wall is because of being damaged so close to the surface. Possible if we remove some and go down we might find more of what is left but for now I will wait to hear ~~what~~ what Bell says. So just before lunch we found a wall. There is a huge rock that has fallen but is still slightly on top and then the wall continues down 2 courses



OMG We found a cache! ◊

OMG So Excited! ◊

2 July 2010

2010-44-25

Just found a cache. What we think the building may have been composed it with a floor going into three steps, even though we only found two, followed by a terrace that went into the wall. The cache we ~~was~~ found is located in the fill that would have been between the steps and the wall. The cache is located straight in the middle of EU D just cm away from the west side of the excavation unit. Of what is visible its about 5 cm long on the bottom and 9 cm tall. It is possibly a drinking glass because I can see more pieces of pottery next to it. There is still a layer of rocks over the cache so we will be very carefull when removing them. The cache is about 53 cm from South wall of the excavation unit & about 40 cm from the north wall of the excavation unit. The top of cache 997.85 and bottom is 997.79 measured from the SW corner of EU F to find the elevations of the top & bottom of cache. Wow! It turns out it is actually two cups with there tops touching. The first one we found is whole, while the second one was broken in at least three pieces. We removed many rocks that were around the cache so that we could remove the vessels easier. We use bambo skewers to dig the dirt gently from out underneath the cache. Tomorrow I will go through and fix my lots because the first cache was found in EU D and the second one was in EU F

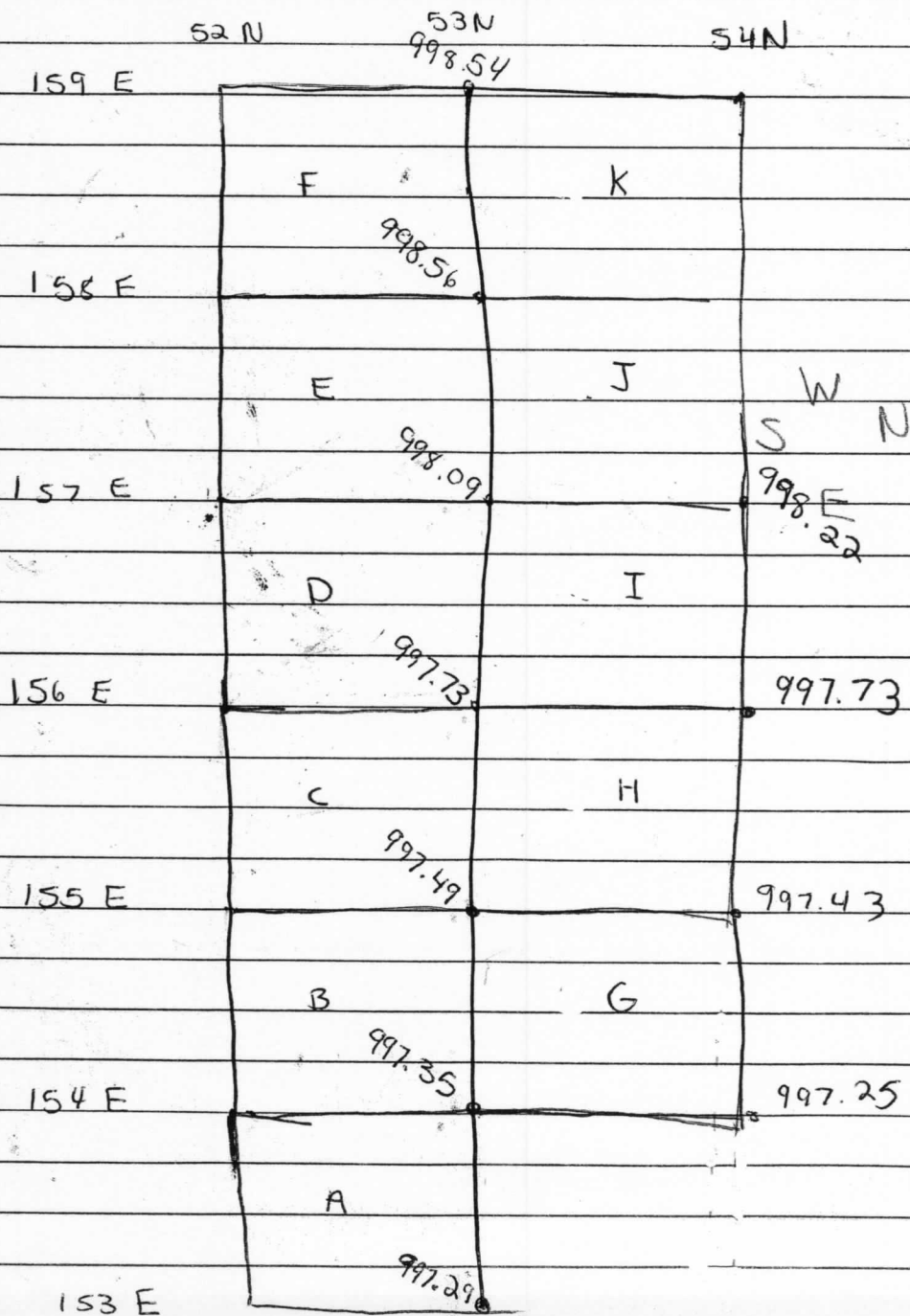
3 July 2010

OK, now I have to get everything organized after just focusing on getting out the two cache in one piece. Today is a day of organization. First we clean EU D & E. Then we take pictures and close lot 10 & 12. Lot 10 is the only one for EU D and lot 12 is to get the elevations for when we removed alot of rocks in order to get the cache out. After we will move up into EU F to see whats there. Then we are going to try and clear out the looters pit to see what might have been there. We are also going to try and set up a pit next to the trench we have now more to the north and see if the middle part between the two steps is more intaked

3 July 2010

2010-44-26

We cleared of EU F and found a couple rocks that might have been a floor but we are going to remove them. ~~We~~ I decided to make it a lot then remove the rocks. While I am doing the Tino y Remberto are going to steril in the SE corner of EU A. After lunch I have Reberto going to steril in EU A and Tino working in EU F taking out some rocks to see what might be there. I am laying out a trench next to the one I have



3 July 2010

2010-44-27

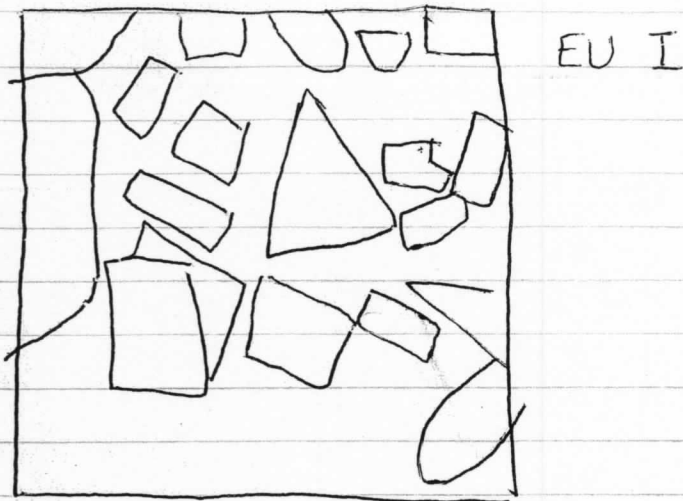
We started in EU G and will continue down to confirm that it is a floor. We just did one lot because my workers have done alot this week so I will finish them early. Yay we made it to the end of hell week.

5 July 2010

We only have three days left of digging so we need to get moving. We are continuing in EU G to confirm the floor. It had rained this weekend and stupid me did not remeasure the excavation unit to make sure no more dirt got pushed in. Sadly dirt did get washed in but I did not realize that after I finished lot 18 elevations. We did dig down at least 10 cm even though the elevations for lot 18 do not show it. We continued down in EU G and confirmed that it is an apron floor that extends a short distance away from the building. We have moved up to EU H to see the steps extend and hopefully see if the third step is still ~~intaked~~ intact. We found the top of the second step and left some rocks in the NW corner that might be part of a third step. We are continuing down to the top of the first step and the going down the front to see how many courses there are. We finished clearing the steps in EU H and will move carefully up to EU I. Since we did not use the EDM to put in the elevations I have been using stakes of know elevations then measuring down to the top soil in corners I need inorder to get the elevations. I had help from Catalina + Jasmin. While excavating EU I we found alot of tumble so I drew them and then removed them. Then we encountered a very small wall that should not be there. I need Bell

5 July 2010

2010-44-28



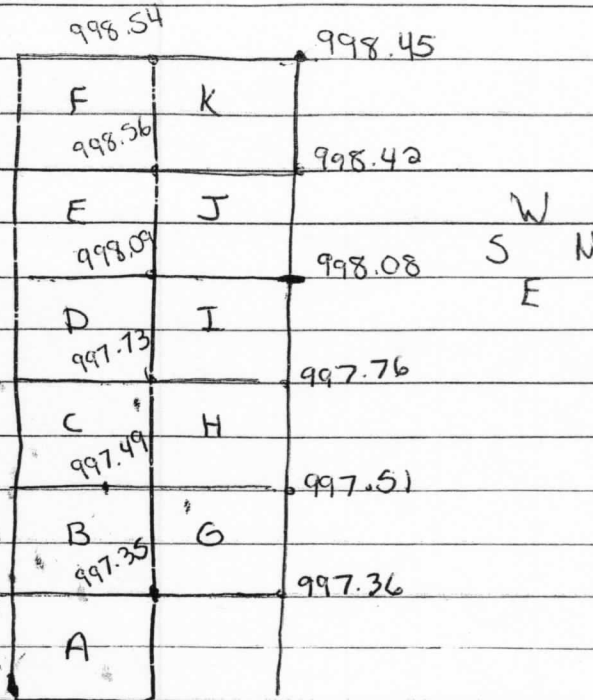
So something is wrong with my elevations. I had finished a lot in EU I recorded it then went on to the next lot. Then I realized my elevations were higher than what I initially had started with. Above is what the lot had looked like with the rocks still in place until they were removed in the second lot. Before I had realized my elevation mistake I had already moved on so I took out that lot and did a new one. When we remeasured and still got higher elevations than what we started with we decided to wait till tomorrow when Bell will bring out the EDM so we can get exact elevations.

6 July 2010

So the first thing we did today was set up the EDM and take points of the trench we added. Then we did points for the parts of the structure we have exposed so far so we can go back over the lot cards and make sure they are close/correct.

6 July 2010

2010-44-29



We removed rocks in EU I and found mini steps about 3 of them and there could have possibly been a fourth or a 3rd larger step more in the east. Now we will move up to EU J to see if the wall continues. Well we have alot of tumble so for now I am going to leave EU J open and move back down in EU I and take of the mini steps because we no longer believe they are mini steps. Going in front for the mini wall we have 3 courses so far and found a door jam. New idea of what building is: there are two big steps possible or 2 more but they are not preserved. Then there is a flat surface which underneath had the cache and runs up against a wall. Then added later is a door jam that has created a mini wall. We did a cleaning lot in D to remove some rocks. We kept J open and have moved up to EU K to dig behind the wall to see if we could find a floor behind the wall. Tomorrow is the last day of digging so hopefully we will get alot done tomorrow

7 July 2010

2010-44-30

Today is the last day of digging. We are continuing to go behind the wall in EU K to see what's behind the wall possibly a living surface floor. So for most of the day Tino and Don Demis were working on EU K to find a floor and instead found a bench of the inside of a room. We will close these two lots of EU J + K and move back over to EU F and continue down to see if the bench continues or if it was perfectly fallen rocks that just fell that way. The bench continues but kinda looks more like a wall. Bell will know more. I will be working on my final notes so that I will not be out here all day tomorrow.

8 July 2010

LAST DAY in The Field! Don Demis y Tino are continuing going down in EU F while I work on my final notes. We cleaned and took final measurements. Watching them backfill was sad.

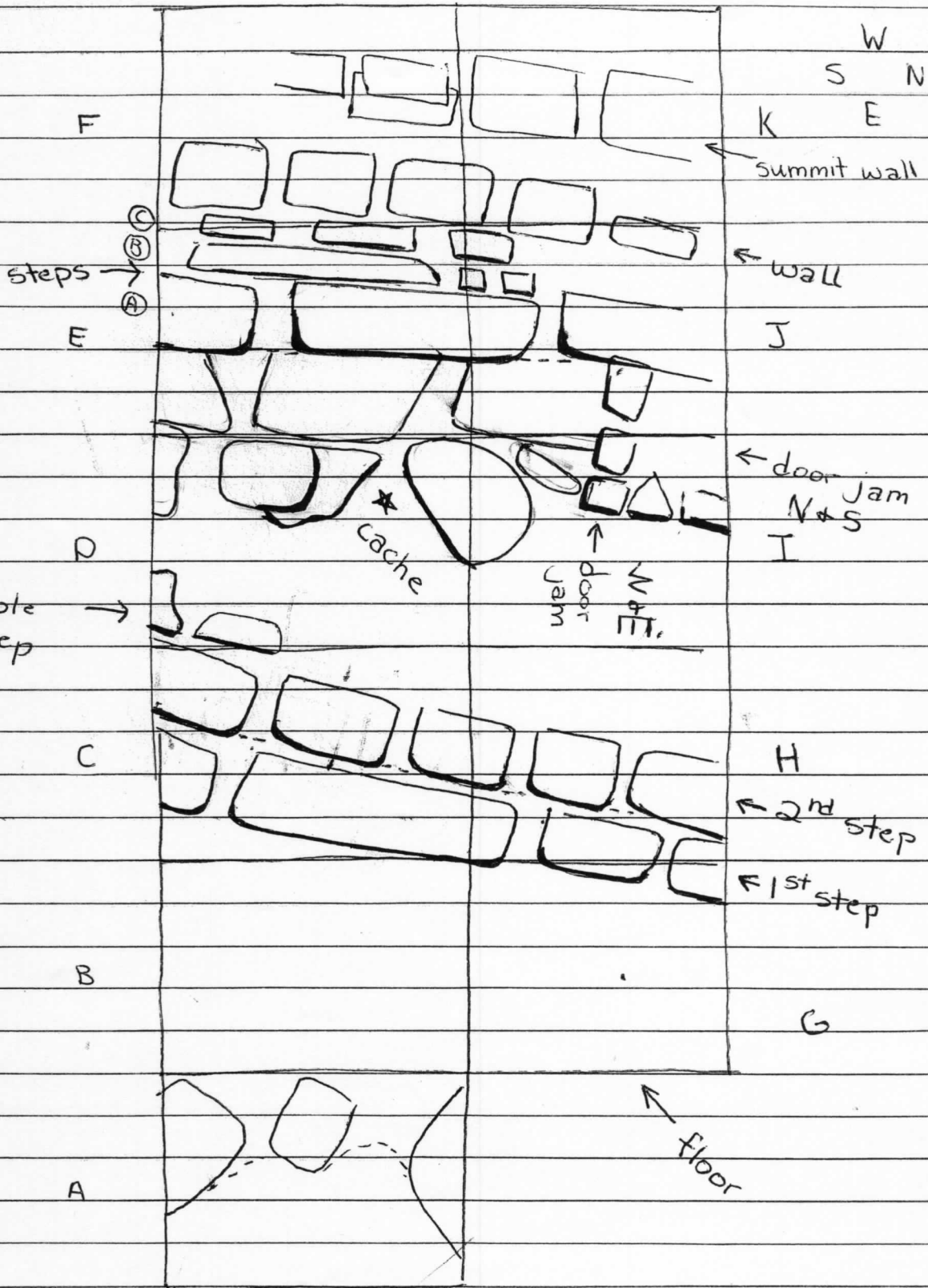
8 July 2010

2010-44-31

OP: 10/38

Site 007 Los Naranjitos

Structure 2

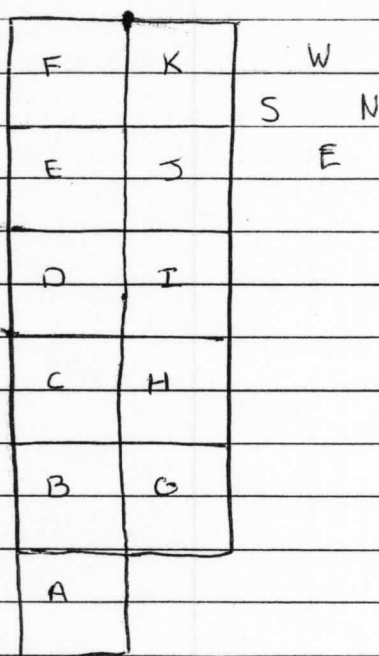


8 July 2010

2010 - 44 - 32

OP 10/38 Site 007 Los Naranjos Structure 2

On this structure we did two trenches side by side. The first trench is 6 excavation units long or 1×6 . The second trench is 5 excavation units long and begins one unit above the first trench.



During this excavation I worked with three people; Tino Mejia, Jose Remberto Ulloa, and Salvador Santiago

We began excavation on this structure on 30 June 2010 and ended on 8 July 2010.

We have found a total of 10 features on this structure. The first is a apron floor located in EU A, B and G. The floor only extends a little ways from the building. In the eastern half of EU A we went down to sterile and discovered that one of the floor rocks located in the middle of the excavation unit along the north side went all the way down till we hit sterile.

The dimensions of floor rock: height 34 cm
width 33 cm
length 25 cm

8 July 2010

2010-44-33

OP. 10/38

Site 007 Los Naranjos Structure 2

In EU A we went down to steril and were able to get soil samples of the changes that occurred to the living surface. There are three different changes that occur in the soil. The first is the top soil, second is the loam clay which is the steril occurred between 30-50 cm bgs, and the third clay between 51-70 cm bgs. Using the munsell soil color charts I was able to distinguish each layer.

top soil: ^{moderately} coarse granular + crumb structures

7.5 YR 3/2 dark brown

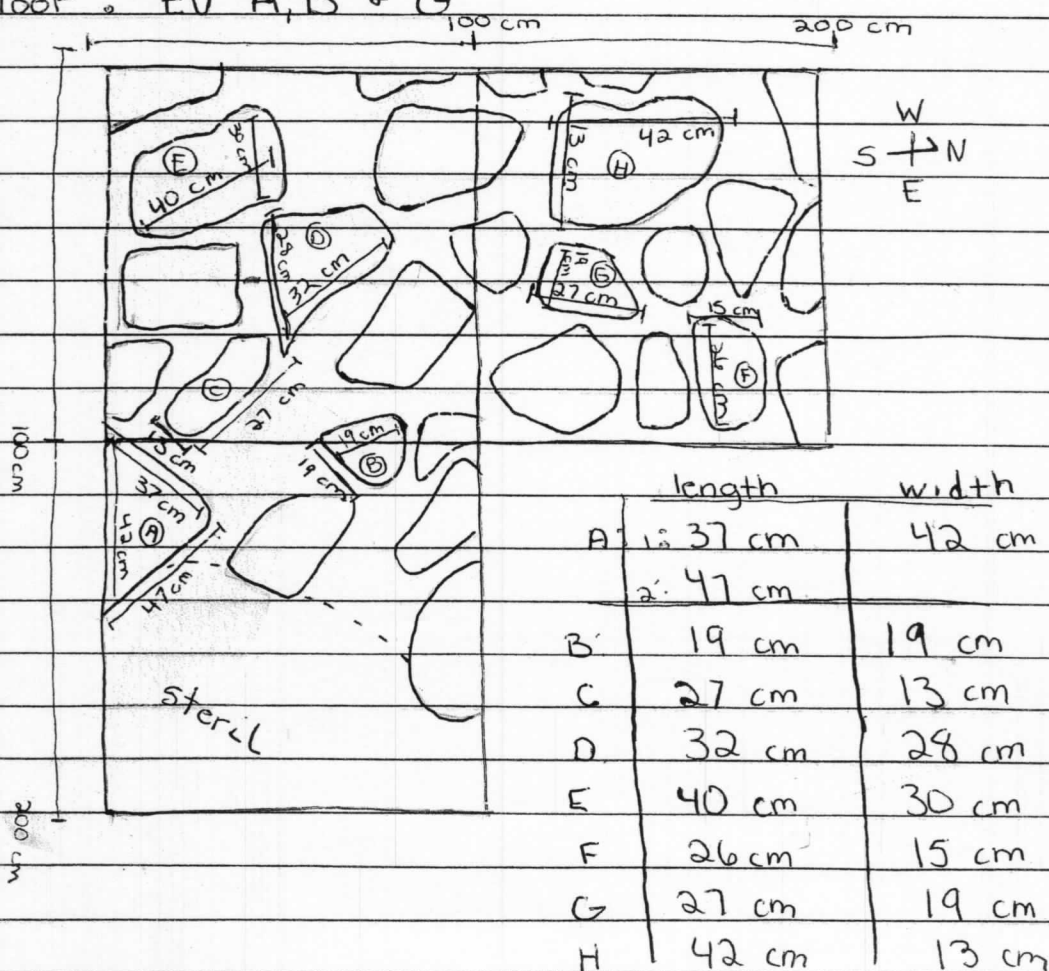
loam clay: medium granular + crumb structures

10 YR 3/2 very dark grayish brown

clay: fine granular + crumb structures

10 YR 3/3 brown

The Floor: EU A, B + G



8 July 2010

2010 - 44 - 34

OP: 10/38

Site 007 Los Naranjitos

Structure 2

Floor elevations:

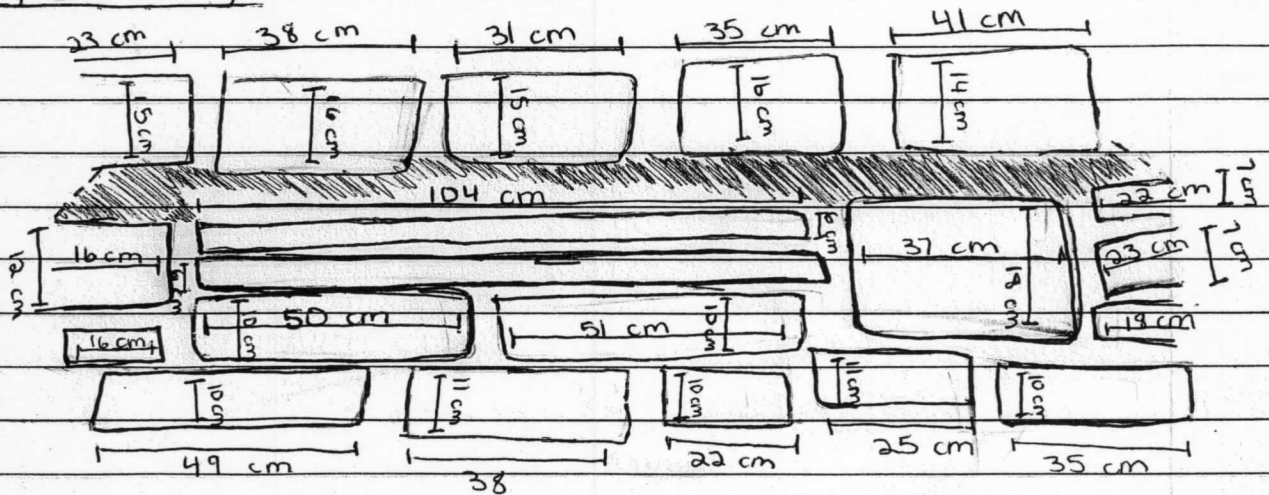
datum point: SW EU F 998.59

highest point 155 997.04

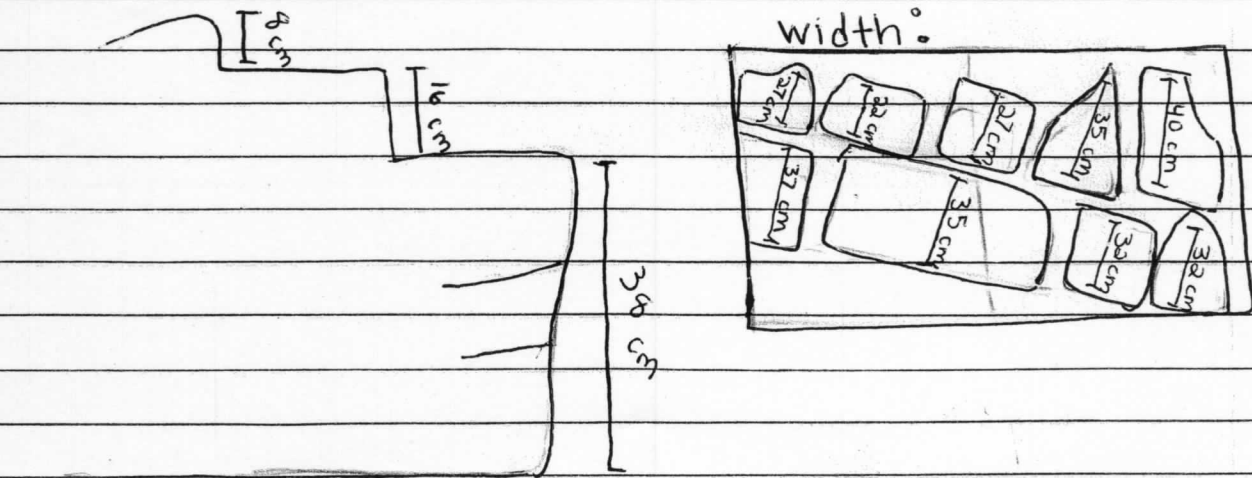
lowest point 194 996.65

The floor then continues into the 1st step. This indicates that the floor was laid first then the steps were laid on top of the floor. After the 1st step there is a 2nd step. Over time and damage done to the surface has caused the 3rd step to disappear but there are still indications that it was there. The steps are located in EU C + H.

height + length:



width:



8 July 2010

2010 - 44 - 35

OP: 10/38 Site 007 Los Naranjitos Structure 2

First Step:

Name	length	width	height	alignment	courses
1 st step	193 cm	37 cm	38 cm	18° N	12-3

Elevation of 1st Step:

datum: SW EU F 998.59

top measure 119 997.40

bottom measure 155 997.04

The types of rocks found on the 1st step are shaped river rocks about 4 in length.

Name	largest rock	smallest rock	modal size	rock form	material of rock
1 st step	height 63 cm width 35 cm length 104 cm	height 12 cm width 37 cm length 16 cm	height 37.5 cm width 36 cm length 60 cm	shaped	river cobble

The largest rock has broken into three pieces over time but at one time was together, for the rock size I combined the three pieces to create the whole rock again.

The back of the first step meets the bottom of the second step.

Second step

Name	length	width	height	alignment	courses
2 nd step	196 cm	23-35 cm	16 cm	18° N	1 1

Elevation of 2nd step:

datum: SW EU F 998.59

top measure 135 997.24

bottom measure 152 997.07

8 July 2010

2010-44-36

OP: 10/38 Site 007 Los Naranjitos Structure 2

The types of rocks found on the second step are shaped river rocks about 5 in length

Name	largest rock	smallest rock	modal size	rock form	material of rock
2 nd step	height 14 cm	height 15 cm	height 14.5 cm	shaped	river cobble
	width 40 cm	width 27 cm	width 33.5 cm		
	length 41 cm	length 31 cm	length 36 cm		

Possible Third step

The second step then probably went into a third step but due to farming and time has disappeared into the tumble. While excavating there were indications that the third step existed. The third step would have been located on the east of excavation units D and I. The one rock that is left in place for the third step is stuck in the wall so the demensions do not represent what the step would have been composed of.

Rock of possible third:

height: 8 cm

length: 17 cm

width: 10 cm

Elevation:

datum SW EU F 998.59

top measurement 115 997.44

bottom measurement 131 997.28

The course of what is left of the wall is 1 course high. The alignment is 18°N just like the first and second steps.

8 July 2010

2010-44-37

OP 10/38 Site 007 Los Naranjitos Structure 2

With time and farming the next section of the building is tumble.
The tumble is located in EU D + I.

In recap of the building so far. We have an apron floor that goes into the first step which is followed by a second and then a possible third step. After the third step comes some tumble.

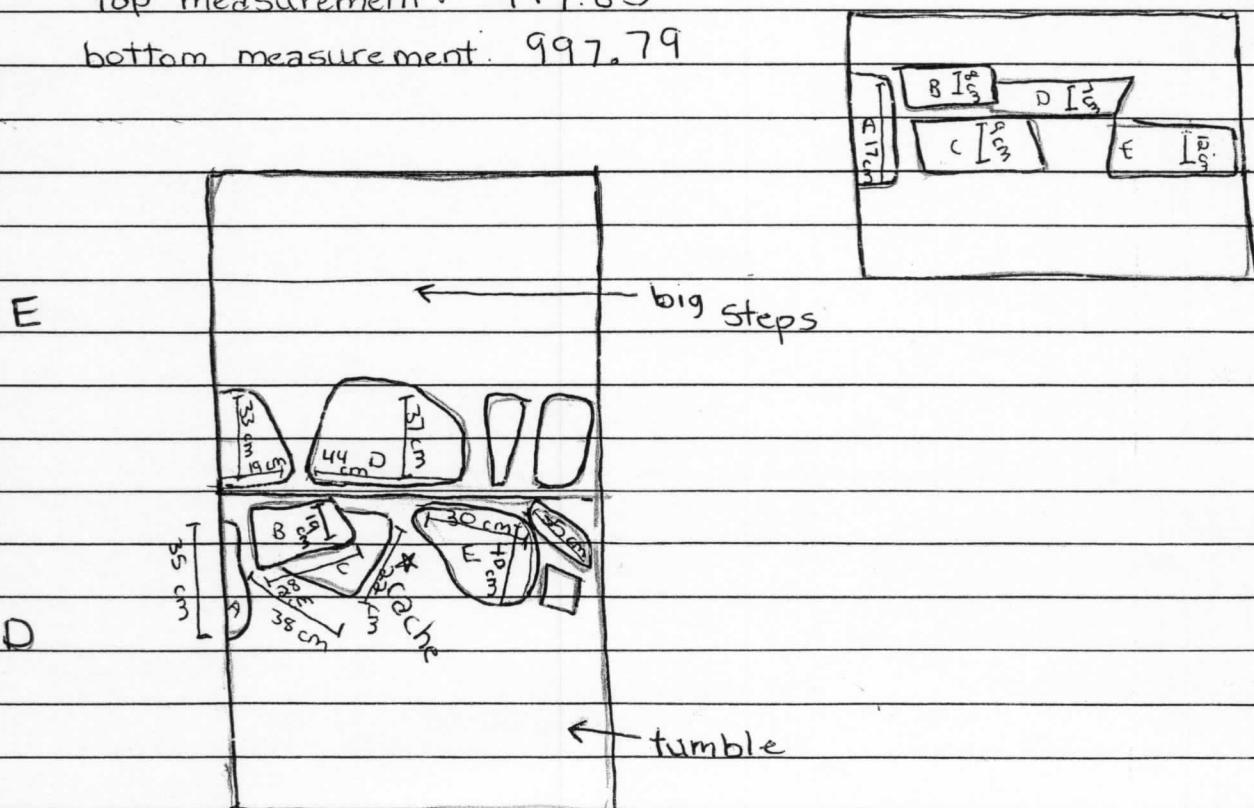
While excavating EU D + E we made a huge discovery of a cache.
The cache was found in fill under the terrace floor. It was found in the middle along the western wall of excavation unit D. The cache consisted of two small drinking glasses with the lids touching each other.
The first cup was all in one piece, the second was broken in at least three pieces.

Elevation of cache:

datum: SW EU E 998.59

top measurement: 997.85

bottom measurement: 997.79



8 July 2010

2010-44-38

OP: 10/38 Site: 007 Los Naranjitos Structure 2

Cache Spot

Name	length	width	height	alignment	courses
cache	105 cm	75 cm	20 cm	126°	1-2

Elevations

datum: SW EU F 998.59

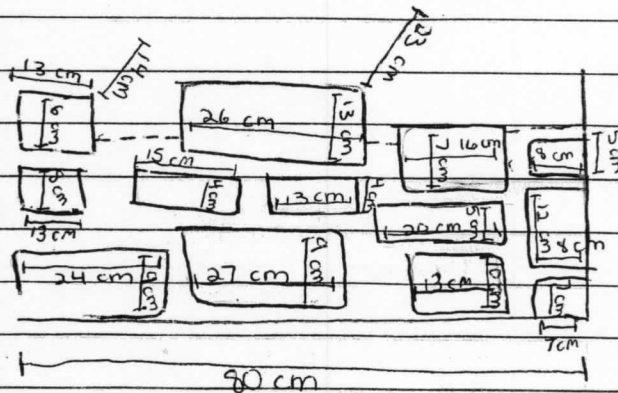
top measurement 85 997.74

bottom measurement 105 997.54

Name	largest rock	smallest rock	medal size	rock form	material of rock
cache	height 7 cm	height 8 cm	height 7.5 cm	lightly	river
	length 44 cm	length 28 cm	length 36 cm	shaped	cobble
	width 37 cm	width 19 cm	width 28 cm		

When we put in the second trench we wanted to follow the big steps that were above the terrace floor where the cache was found. Instead we found a door jam. The door jam is located in excavation unit I and J. The door jam will be broken down into two features. The first feature is the front of the door jam that runs North to South. The second feature is the side of the door jam that runs into the building going West to East

Door jam
North to South



8 July 2010

2010-44-39

OP: 10/38 Site 007 Los Naranjitos Structure 2

Door Jam North to South

Name	length	width	height	alignment	courses
door jam	80 cm	33 cm ^{wall}	34 cm	18° N	3
North/South		62 cm ^{whole}			

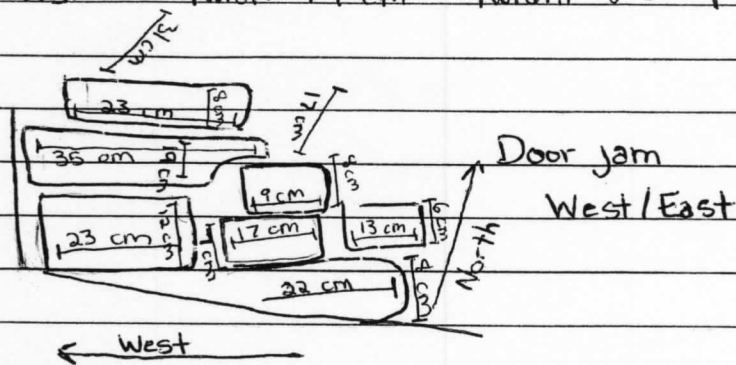
Elevations:

datum SW EV F 998.59

top measurement 85 997.74

bottom measurement 120 997.39

Name	largest rock	smallest rock	modal size	rock form	material of rock
door jam	height 13 cm	height 6 cm	height 9.5	lightly	river
North/South	length 26 cm	length 13 cm	length 19.5	shaped	cobble
	width 23 cm	width 14 cm	width 18.5		



Door jam West to East

Name	length	width	height	alignment	courses
Door jam	63 cm	34 cm	30 cm	124°	2-3
West/East		80 cm whole			

Elevations

datum SW EV F 998.59

top measurement 64 997.95

bottom measurement 95 997.64

8 July 2010

2010-44-40

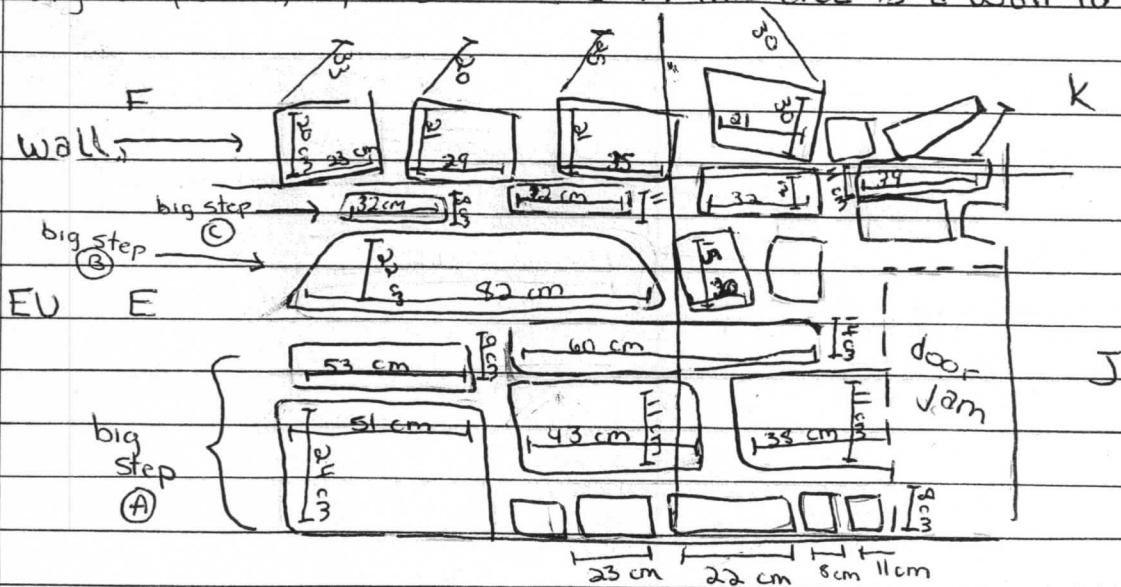
OP: 10/38 Site 007 Los Naranjitos Structure 2

Door jam West/East

Name	largest rock	smallest rock	modal size	rock form	material of rock
Door jam West/East	height 8 cm	height 8 cm	height 8 cm	lightly shaped	river cobble
	length 23 cm	length 9 cm	length 16 cm		
	width 31 cm	width 17 cm	width 24 cm		

The door jam was build after the floor, steps, and big steps. This is know because the big steps behind the door jam extend into it. The exact size of the door jam is not known because we did not get to excavate that far. The building works here by after the step there was a terrance (where the cache was found underneath) which then goes into big steps. In the trench we add right next to the terrance is the door jam.

The big steps are located in excavation unit E, J, and F. The big steps have fallen back out of place. The biggest step will be the main feature while the three or steps that had fallen out of place or possibly may have been ~~built~~ built on top of a wall and fallen off. will be big steps A, B, and C. Also in this area is a wall to the building.



8 July 2010

2010-44-41

OP: 10/38 Site 007 Los Naranjitos Structure 2

Big Step A:

name	length	width	height	alignment	courses
BS A	144 cm	30 cm	14 cm	18° N	2-3

Elevations

datum: SW EV F 998.59

top measure 53 998.06

bottom measure 81 997.78

name	largest rock	smallest rock	modal size	rock form	material of rock
BS	height 14 cm	height 8 cm	height 11 cm	lightly	river
A	length 60 cm	length 8 cm	length 34 cm	shaped	cobble
	width 32 cm	width -	width -		

Big Step B:

name	length	width	height	alignment	courses
BS B	134 cm	16 cm	20 cm	18° N	1

Elevations

datum: SW EV F 998.59

top measure 29 998.30

bottom measure 54 998.05

name	largest rock	smallest rock	modal size	rock form	material of rock
BS	height 22 cm	height 15 cm	height 18.5 cm	lightly	river
B	length 82 cm	length 20 cm	length 51 cm	shaped	cobble
	width -	width -	width -		

Some of the width we could not get because they were fallen into the dirt/soil farther than we were excavating.

8 July 2010

2010-44-42

OP:10/38

Site 007 Los Naranjitos

Structure 2

Big Step C

name	length	width	height	alignment	courses
BS C	180 cm	42 cm	28 cm	18°N	1

Elevation:

datum: SW EU F 998.59

top measure 21 998.38

bottom measure 38 998.21

name	largest rock	smallest rock	modal size	rock form	material of rock
BS C	height 12 cm	height 8 cm	height	lightly	river
	length 32 cm	length 32 cm	length	shaped	cobble
	width -	width -	width -		

width are unknown because they have fallen in where we are not excavating further.

Wall

name	length	width	height	alignment	courses
Wall	200 cm	42 cm	28 cm	18°N	1

Elevation:

datum: SW EU F 998.59

top measure 12 998.47

bottom measure 34 998.25

name	largest rock	smallest rock	modal size	rock form	material of rock
wall	height 21 cm	height 20 cm	height 20.5 cm	lightly	river
	length 35 cm	length 23 cm	length 29 cm	shaped	cobble
	width 25 cm	width 33 cm	width 29 cm		

8 July 2010

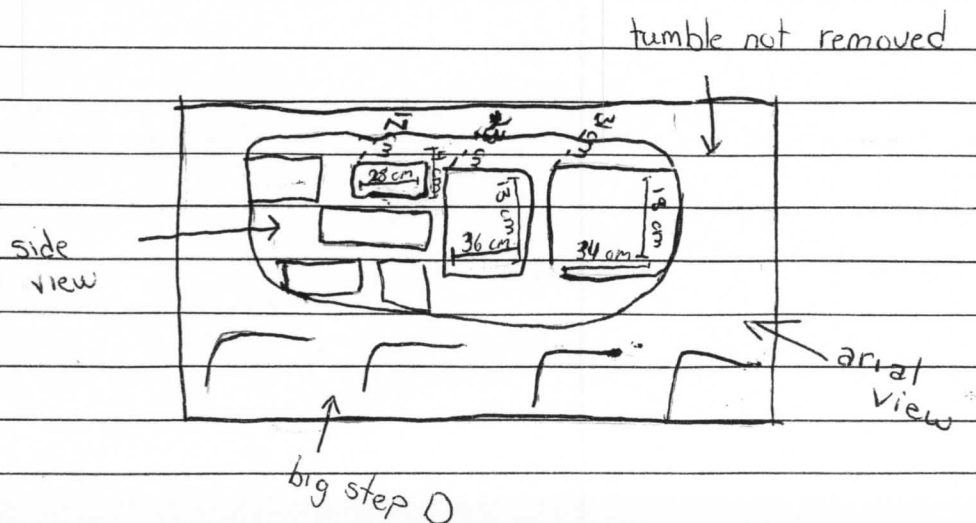
2010-44-43

OP: 10/38 Site 007 Los Naranjitos Structure 2

The big steps that were located behind the terrace and door jam are oriented in the following:

The big step A was the base of a possible step. Big step B was at a slight angle falling to the west but still more on top of big step A than any others. Big step C had fall at a huge angle and only the sides of the rocks were visible. They were also about 10 cm below the top of the big step B. The wall could have been the back side if it was a wall but we believe they are not ~~steps~~ this placement of the rocks could prove it. The wall better oriented to be the next step possibly after BS A. The wall is on a slight angle falling to the west but it is not as big as the other step angles of falling. I think the wall is a wall not another step.

It was first suggested that the big steps were in fact a wall and the fact that they were falling backwards into the building instead of forward away from the building suggests that it might be open behind the wall such as a room or a floor. We moved to excavate EU F & K and search for a floor or room. We went down first in EU K and discovered two large stones in a line. It was suggested at first that they may be rocks from on top of the wall that fell off and landed upside down in the line they were on the wall. It was not until we went down in EU F that we saw the line continue. It was suggested that it could possibly be a bench but upon further examination it was thought to be a summit wall.



8 July 2010

2010-44-44

OP: 10/38 Site 007 Los Naranjos Structure 2

Summit Wall

name	length	width	height	alignment	courses
Summit wall	200 cm	37 cm	23 cm	18° N	1-3

Elevations

datum SW EU F 998.59

top measure 56 998.03

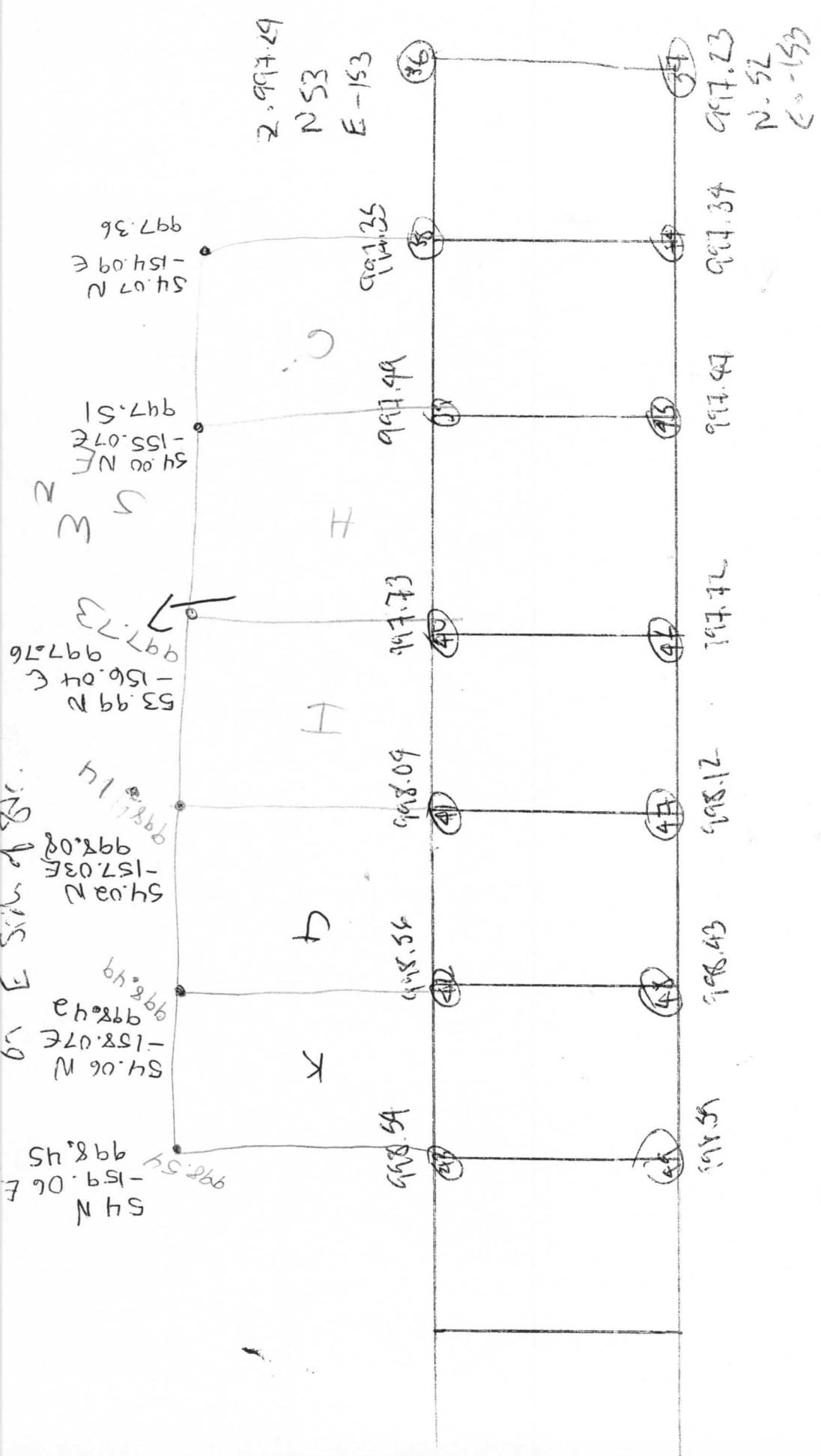
bottom measure 85 997.74

name	largest rock	smallest rock	modal size	rock form	material of rock
Summit Wall	height 18 cm length 34 cm width 31 cm	height 4 cm length 28 cm width 17 cm	height 11 cm length 31 cm width 24 cm	lightly shaped	river cobble

In total there are 10 features at this building. The first feature is a floor which was constructed first because some of the rocks in the floor go underneath the 1st step. The first step was built on top of the floor and is followed by a second step and possibly a third. Then a terrace was built with an offering (cache) placed in the tumble under the terrace floor. The terrace then runs into and under steps that continue up the building. The big steps are broken down into Big step A, B and C. I believe they are steps and not a wall because of their position. They are angled falling and the flat edges are facing forward. The wall is a wall because the backs of the rocks are going into the dirt/soil, the face of the rocks are flat and as they go back they are more curved. The other possibility for the big steps and wall is that in fact the front of a wall that fell in and the wall is the back of the wall. Then in excavation there seems to be a gap which might be a hallway and then we discovered the summit wall. We were unable to continue excavation to the floor because of time to confirm the summit wall.

E-W traverse Sta. 2 5007 Op. 10/38

on E side of Str.



E-W traverse Sta. 2 5007 Op. 10/38

on E side of Str.

