

2007

EPV 004 Escobar Morales Field Notes 2007

Santiago Escobar Morales

Follow this and additional works at: <https://digital.kenyon.edu/honduras>



Part of the Archaeological Anthropology Commons

Recommended Citation

Escobar Morales, Santiago, "EPV 004 Escobar Morales Field Notes 2007" (2007). *Four Valleys Archive*. Paper 96950.
<https://digital.kenyon.edu/honduras/96950>

This Field Notes is brought to you for free and open access by the Anthropology at Digital Kenyon: Research, Scholarship, and Creative Exchange. It has been accepted for inclusion in Four Valleys Archive by an authorized administrator of Digital Kenyon: Research, Scholarship, and Creative Exchange. For more information, please contact noltj@kenyon.edu.

Puntos Topograficos

	N	E	E. Leve
1) Poro en la esquina NE			1009.9
2) Esquina Parte Superior	851.25	442.84	1015.8
3) En muro arriba	850.31	445.38	1015.9
4) En muro arriba	851.76	445.57	1015.9
5) Parte →	851.89	449.40	1014.11
6) Parte arriba de 5 Grada	850.16	448.81	1014.0
7) Releno de Abajo de Grada	851.97	450.06	1012.9
8) Grada 1 y	851.55	450.28	1012.6
9) Pared	851.18	443.77	1015.8
10) Grupo	851.48	441.67	1014.7
11	852.00	440.76	1013.7
12	851.34	440.63	1013.7
13	851.54	438.21	1013.7
14	852.32	437.25	1013.3
15	851.68	436.02	1011.1
16) Límite de ...	853.04	434.30	1011.4
			1010.9



1500

1500



Op. 05/04

Op

24

Op. 05/12

Op. 05/06

Op. 04/04

Op. 05/08

Op. 05/14

Op. 05/01

Op. 05/07

Op. 04/07

Op. 05/03

Op. 05/09

Op. 06/01

Op. 06/03

Op. 06/08

Op. 04/05

Op. 04/02

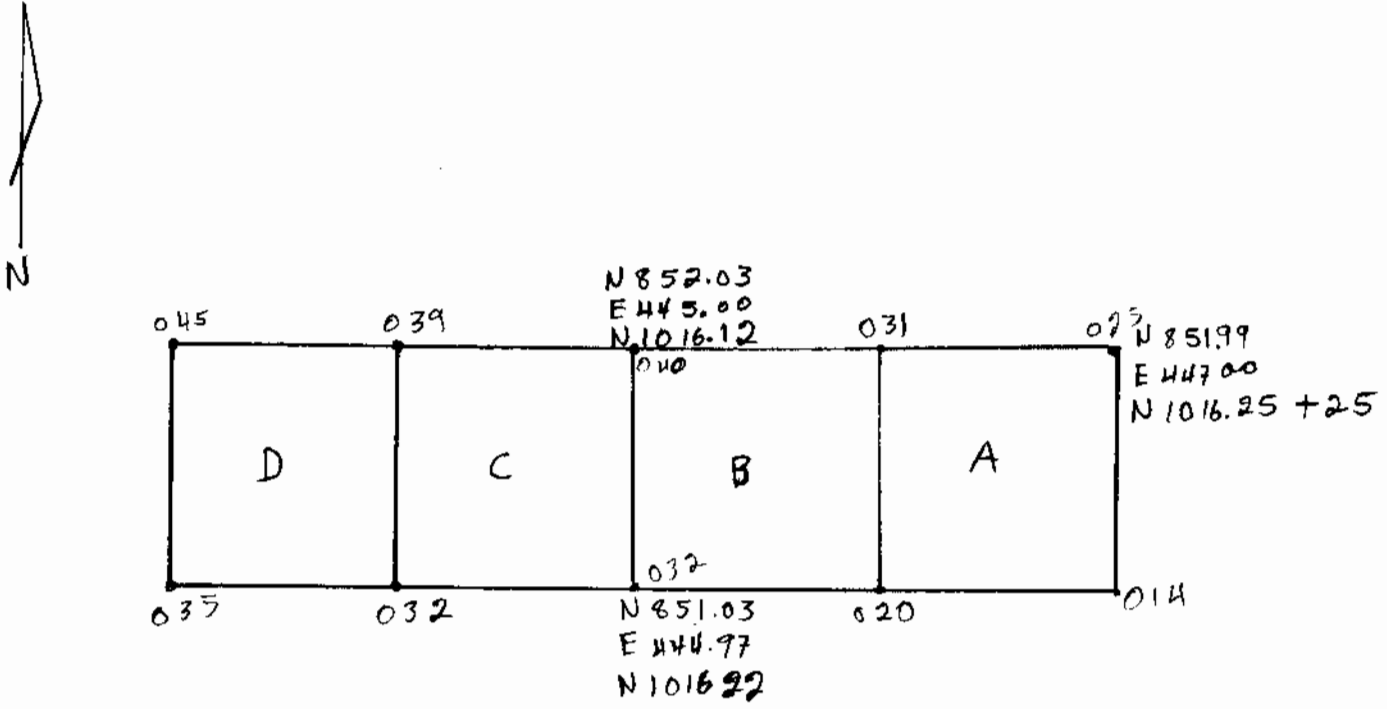
Op. 05/05

Op. 05/02

3 Associated points

Date	Feature	Class	Sub-class	#	Description	North	East	Elev
2007-05-21	Archaeology	Trench corner		08	05/15	851.99	447.00	1,016.25
2007-05-21	Archaeology	Trench corner		09	05/15	852.03	445.00	1,016.12
2007-05-21	Archaeology	Trench corner		10	05/15	851.03	444.97	1,016.22

1016.5



7 Associated points

<i>Date</i>	<i>Feature</i>	<i>Class</i>	<i>Sub-class</i>	<i>#</i>	<i>Description</i>	<i>North</i>	<i>East</i>	<i>Elev</i>
2005-06-08	Archaeology	Trench corner		24	05/06 EU G - NW corner	847.00	454.00	1,011.56
2005-06-08	Archaeology	Trench corner		22	05/08 EU F - NW corner	846.00	455.00	1,011.36
2005-06-08	Archaeology	Trench corner		22	05/08 EU E - SW corner	846.00	455.00	1,011.36
2005-07-27	Archaeology	Trench corner		65	05/08 EU D - NE corner	846.00	457.00	1,010.04
2005-07-27	Archaeology	Trench corner		64	05/08 EU C - NE corner	847.00	457.00	1,010.19
→ 2005-07-27	Archaeology	Trench corner		66	05/08 EU B - NW corner	846.00	457.00	1,010.04
2005-07-27	Archaeology	Trench corner		67	05/08 EU A - NW corner	847.00	457.00	1,010.19

Op 05/08

12/06/07

Nomma Letticia Rivas

Karen Vanesa Manroy

Fany Coralina Pinto