



INSTITUT DE FRANCE  
Académie des sciences

# *Comptes Rendus*

---

## *Géoscience*

### *Sciences de la Planète*

Philémon Autin, Jean Emmanuel Sicart, Antoine Rabatel, Regine Hock and Vincent Jomelli


**Climate reconstruction of the Little Ice Age maximum extent of the tropical Zongo Glacier using a distributed energy balance model**

Published online: 27 September 2022

<https://doi.org/10.5802/crgeos.145>

**Part of Special Issue:** Geo-hydrological Data & Models

**Guest editors:** Vazken Andréassian (INRAE, France),  
Valérie Plagnes (Sorbonne Université, France), Craig Simmons (Flinders  
University, Australia) and Pierre Ribstein (Sorbonne Université, France)

 This article is licensed under the  
CREATIVE COMMONS ATTRIBUTION 4.0 INTERNATIONAL LICENSE.  
<http://creativecommons.org/licenses/by/4.0/>



*Les Comptes Rendus. Géoscience — Sciences de la Planète sont membres du  
Centre Mersenne pour l'édition scientifique ouverte*

[www.centre-mersenne.org](http://www.centre-mersenne.org)

e-ISSN : 1778-7025



Geo-hydrological Data & Models / *GDM - Géo-hydrologie, données et modèles*

# Climate reconstruction of the Little Ice Age maximum extent of the tropical Zongo Glacier using a distributed energy balance model

Philémon Autin<sup>\*, a</sup>, Jean Emmanuel Sicart<sup>a</sup>, Antoine Rabatel<sup>a</sup>, Regine Hock<sup>b, c</sup> and Vincent Jomelli<sup>d</sup>

<sup>a</sup> Univ. Grenoble Alpes, CNRS, IRD, Grenoble-INP, Institut des Géosciences de l'Environnement (IGE, UMR 5001), F-38000 Grenoble, France

<sup>b</sup> Department of Geoscience, Oslo University, Oslo, Norway

<sup>c</sup> Geophysical Institute, University of Alaska, Fairbanks, AK, USA

<sup>d</sup> CNRS Cerege, Technopôle de l'Environnement Arbois-Méditerranée, Aix en Provence, France

*Current address:* Institut des Géosciences de l'Environnement, Bâtiment Glaciologie, 54, rue Molière, 38400 Saint Martin d'Hères, France (P. Autin)

*E-mails:* [philemon.autin@univ-grenoble-alpes.fr](mailto:philemon.autin@univ-grenoble-alpes.fr) (P. Autin), [jean-emmanuel.sicart@ird.fr](mailto:jean-emmanuel.sicart@ird.fr) (J. E. Sicart), [antoine.rabatel@univ-grenoble-alpes.fr](mailto:antoine.rabatel@univ-grenoble-alpes.fr) (A. Rabatel), [regine.hock@geo.uio.no](mailto:regine.hock@geo.uio.no) (R. Hock), [jomelli@cerege.fr](mailto:jomelli@cerege.fr) (V. Jomelli)

**Abstract.** This study assessed the climate conditions that caused the tropical Zongo Glacier (16° S, Bolivia) to reach its Little Ice Age (LIA) maximum extent in the late 17th century. We carried out sensitivity analyses of the annual surface mass balance to different physically coherent climate scenarios constrained by information taken from paleoclimate proxies and sensitivity studies of past glacier advances. These scenarios were constrained by a 1.1 K cooling and a 20% increase in annual precipitation compared to the current climate. Seasonal precipitation changes were constructed using shuffled input data for the model: measurements of air temperature and relative humidity, precipitation, wind speed, incoming short and longwave radiation fluxes, and assessed using a distributed energy balance model. They were considered plausible if conditions close to equilibrium glacier-wide mass balance were obtained. Results suggest that on top of a 1.1 K cooling and ~20% increase in annual precipitation, only two seasonal precipitation patterns allow LIA equilibrium: evenly distributed precipitation events across the year and an early wet season onset.

**Keywords.** Tropical glacier, Surface energy balance modeling, Little Ice Age climate, Andes, Climate reconstruction.

*Published online: 27 September 2022*

## 1. Introduction

The Little Ice Age (LIA) was a multi-secular cold period, lasting approximately from 1350 to 1850 AD,

\* Corresponding author.

during which glaciers advanced worldwide [e.g., Solomina *et al.*, 2015, 2016]. The magnitude and timing of the glacial advances was not synchronous worldwide [Grove, 1988, Rabatel *et al.*, 2008, Neukom *et al.*, 2014, Solomina *et al.*, 2015, 2016]. The evolution of glaciers since the Little Ice Age has been most frequently studied in mid-latitudes. For example, in the French Alps glaciers reached their maximum extent around the first half of the 17th century, and their front oscillated in a position slightly up-valley before re-advancing close to their maximum extent throughout the first half of the 19th century [e.g., Grove, 1988, Vincent *et al.*, 2004, 2005, Solomina *et al.*, 2015, 2016]. [Paul and Bolch, 2019] reviewed a number of studies of the evolution of Alpine glaciers since the LIA and concluded that it could be summarized by a km scale retreat, a rise in the equilibrium-line altitude (ELA) of 100–200 m, and an up-valley retreat of several hundred meters in glacier terminus positions. In Pyrenean glaciers, Campos *et al.* [2021] reported ELA rises of 220 m.

On the other hand, the evolution of glaciers in Tropical South America since the LIA has been the subject of few studies. The majority of glaciers reached their maximum extent between 1630 and 1720 and have been retreating ever since; their retreat has been interrupted several times by minor advances [Rabatel, 2005, Rabatel *et al.*, 2005, 2008, Jomelli *et al.*, 2009, 2011]. Based on the dating of 15 Bolivian glaciers using lichenometry, radiocarbon or  $^{10}\text{Be}$  techniques, Rabatel *et al.* [2008] estimated that their ELA rose by  $285 \pm 50$  m since the LIA while, based on the Telata Glacier also in Bolivia, Jomelli *et al.* [2011] estimated that the ELA rose by 320 m.

Understanding past glacier variations is key to better insights into future changes. In the case of tropical glaciers, this is of particular interest as they represent an important water resource for Andean populations [e.g., Soruco *et al.*, 2015]. Tropical glaciers react rapidly to climate perturbations [by advancing or retreating, e.g., Kaser, 2001, Thompson *et al.*, 2006] making them suitable paleoclimate proxies to evaluate past climate scenarios.

Over tropical South America, paleoclimate proxies such as ice cores, sediments, tree rings or speleothems [e.g., Thompson *et al.*, 2006, Ledru *et al.*, 2013, Apaéstegui *et al.*, 2018, Campos *et al.*, 2019, Bird *et al.*, 2011, Morales *et al.*, 2012] and glacier

sensitivity analyses [e.g., Rabatel *et al.*, 2005, 2008, Malone *et al.*, 2015] provide valuable temperature and precipitation data on the LIA. The main drawback of these methods is the temporal scale (annual to decadal). For example, glacier studies usually use simple approaches [e.g. simplified energy balance methods, Hastenrath and Ames, 1995] which only allow comparison of glacier steady state conditions at two different periods, but do not provide detailed insights into seasonal changes in climatic forcing on the glacier mass balance.

The annual mass balance of South American tropical glaciers depends primarily on the timing and length of the wet season during the austral summer [Sicart *et al.*, 2011] and they are highly sensitive to the temporal distribution of precipitation between September and the onset of the wet season [Autin *et al.*, 2022]. Several studies suggest that the onset and length of the wet season may have changed during the Little Ice Age [e.g. Diaz and Vera, 2018], a feature that cannot be captured by models using annual temperature and precipitation amounts. Hence, such models may largely underestimate past mass balance variability [Sicart *et al.*, 2011]. In addition, sub-annual precipitation records are rare over low latitude mountains and precipitation predictions are unreliable, making reconstruction of past glacier advances and estimating future retreat challenging in these regions.

In this study, we used the distributed energy balance model [DEBAM, Hock and Holmgren, 2005] which had been adapted to tropical glaciers by Sicart *et al.* [2011]. This model is based on equations of mass and energy conservation and, in theory, the physical interpretation of the parameters can be linked to measurable quantities [Beven, 1989]. However, because natural sub-grid heterogeneities can lead to a mismatch of scales between measured and modeled variables, the calibration process is often complicated [Klemes, 1983, Seibert, 1999]. Thus, to limit the risk of using a model calibration that makes the model subject to the three rules of classical tragedy: unity of place, unity of action and unity of time [De Marsily, 1994], a parsimonious approach was chosen to minimize the number of parameters with the aim of matching model complexity to the availability of field observations. In this way, we expect that even if the models represent more fiction than reality, the fiction nevertheless helps under-

stand reality [Seibert, 1999].

We chose to apply the model to the tropical Zongo Glacier (16° S, Bolivia) because this glacier's present-day climate controls have already been well studied [e.g., Rabatel *et al.*, 2013, Autin *et al.*, 2022] and its LIA maximum reconstructed [Rabatel, 2005]. Run at an hourly time step, this model makes it possible to investigate the effect of changes in seasonal precipitation patterns on the surface mass balance at the LIA maximum extent of the glacier.

For this purpose, we created scenarios that differ in precipitation amounts and seasonality but where the physical consistency between measured meteorological variables is retained (i.e. physically-coherent scenarios). The scenarios that resulted in an equilibrium state (surface mass balance close to zero) were considered plausible LIA scenarios.

## 2. Study site and background on the LIA in the tropical Andes

### 2.1. Study site and present climate

Zongo Glacier (16° 15' S, 68° 10' W, Cordillera Real, Bolivia) is a valley-type glacier extending from ~6000 m a.s.l. down to ~4950 m a.s.l. A glacier monitoring program began in 1991 through collaboration between a Bolivian university (*Universidad Mayor de San Andrés*) and IRD [French Research Institute for Development, Francou *et al.*, 1995, Ribstein *et al.*, 1995]. Rabatel *et al.* [2013] and Sicart *et al.* [2015] provide a detailed overview of the monitoring network, which includes three automatic weather stations (AWS), one on the glacier, and two off-glacier, along with a discharge gauging station, and several ablation stakes and snow pits (Figure 1).

Being in the outer tropics, the climate over the glacier is characterized by marked precipitation and cloud cover seasonality, with a single wet season in austral summer and a pronounced dry season in austral winter [Troll, 1941]. A number of authors have identified and described three seasons with distinct melt mechanisms over this tropical glacier where the hydrological year starts on the first of September [e.g., Sicart *et al.*, 2011, Rabatel *et al.*, 2012, Autin *et al.*, 2022].

The transition season (September to November) is characterized by increasing melt rates due to limited precipitation [around 20% of the annual

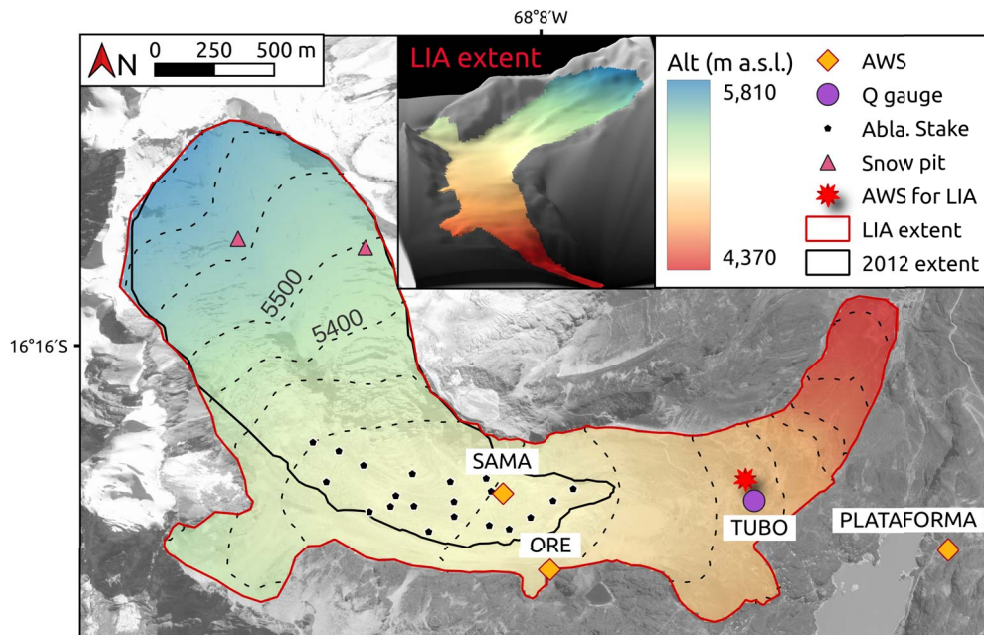
amount, Ramallo, 2013] and increasing solar radiation as the top of atmosphere radiation approaches its maximum annual value reached at the austral summer solstice [Sicart *et al.*, 2011]. Autin *et al.* [2022] simulated nine years of distributed surface energy balance over Zongo Glacier using DEBAM and showed that this period plays a key role in controlling annual mass losses and that the timing of precipitation events in the season is a key driver of melt.

The wet season (December to March) is linked to the mature phase of the South American monsoon system (SAMS). During the SAMS, a strong anticyclonic system in the upper troposphere [the Bolivian High, Lenters and Cook, 1997] coupled with the southward displacement of the South American low-level jet (SALLJ) result in strong easterly winds on the eastern slopes of the Cordillera Real. This leads to moisture transport over the Cordillera Real, which, coupled with solar heating of the surface, results in frequent afternoon/early evening convection events over Zongo [e.g., Garreaud *et al.*, 2003]. This season is characterized by decreasing melt rates due to the strong cloud cover and albedo feedback effect. Over this period, little ice mass loss is observed as most of the melt comes from large snowfall events [70% of the annual amounts, Ramallo, 2013]. In addition, it is the glacier accumulation season.

April–May is a second transition period, from the end of the wet season to the onset of the dry season (June to August). During this period, the precipitation amounts and distribution are highly variable due to the interannual variability of the demise of the wet season (based on 18 years of measurements, the amount of precipitation received over this period is  $50 \pm 27$  mm w.e.).

The dry season is characterized by low melt rates and rare precipitation events. The absence of clouds in the dry season creates an incoming longwave radiation deficit leaving little energy available for melt [Sicart *et al.*, 2011]. In addition, the dry and cold air coupled with high wind speeds favors sublimation over melt [Wagnon *et al.*, 1999, Sicart *et al.*, 2005], limiting mass loss through this period.

A number of studies [e.g., Sicart *et al.*, 2005, Wagnon *et al.*, 1999] identified the net all-wave radiation flux as the main driver of melt at seasonal and interannual time scales, more specifically, the incoming shortwave radiation flux. Sicart *et al.* [2005, 2016]



**Figure 1.** Zongo Glacier (16° 15' S, 68° 10' W) showing its monitoring network. The red outline represents the maximum extent of the LIA and the corresponding digital elevation model, the black line shows the extent of the glacier in 2012. The map in the top inset is a 3D view of the extent of the glacier at its LIA maximum extent. SAMA (5050 m a.s.l.), ORE (5050 m a.s.l.) and PLATAFORMA (4750 m a.s.l.) are the three automatic weather stations (AWS) installed on and around the glacier, TUBO is a discharge gauging station located at 4830 m a.s.l. The red star shows the position at which the measurements are used to force the model in LIA simulations. Source of the background image: Pleiades satellite in 2013, © CNES—Airbus D&S. Digital Elevation Model: Rabatel [2005].

showed that the marked cloud and precipitation seasonality is an important factor in controlling seasonal mass balance variability. Building on this, Autin *et al.* [2022] showed that melt energy is highest during the transition season and that the interannual variability of the surface mass balance is mostly driven by the temporal distribution of precipitation events and their amounts and, to a lesser extent, by the cloud cover throughout this season.

## 2.2. LIA climate reconstructions in the tropical Andes

Ice cores are paleoclimate proxies that provide valuable information at seasonal and annual scales over the last 1000 years as well as information at a coarser temporal scale over the last 20,000 years [Vimeux *et al.*, 2009, Hurley *et al.*, 2019]. Using an ice core drilled in the Quelccaya ice cap (QIC, southern Peru),

Thompson *et al.* [1986, 2006] showed a significant decrease in both  $\delta^{18}\text{O}$  and dust concentration during the LIA (1500–1800 AD) were associated with a decrease in temperatures. More recently, Hurley *et al.* [2019] showed that changes in  $\delta^{18}\text{O}$  are primarily linked with ENSO activity which, in turn, is related to changes in the activity of the South American monsoon system (SAMS) rather than temperature changes. Thus, in agreement with Hurley *et al.* [2019], we consider that the lower  $\delta^{18}\text{O}$  observed during the LIA is associated with increased precipitation rather than with colder temperatures.

Morales *et al.* [2012] analyzed *Polylepis Tarapacana* tree rings across the Altiplano to reconstruct the climate between 1300 and 2000 AD and found that sustained wet conditions prevailed between 1600 and 1750 AD leading to precipitation positive anomalies (up to 40% at its highest with respect to the average measurement for the period 1982–

2000).

Speleothems [Campos *et al.*, 2019, Apaéstegui *et al.*, 2018, Vuille *et al.*, 2012] and sediments of diverse origin [Ledru *et al.*, 2013, Bird *et al.*, 2011, Sachs *et al.*, 2009, Haug *et al.*, 2001] provide information on changes in temperature and precipitation patterns over the past 2000 years. Their wide spatial availability across tropical South America enables a 2000-year reconstruction of the SAMS. These studies suggest that a southern shift of the Inter Tropical Convergence Zone (ITCZ) linked to decreased radiative forcing [Maunder minimum, 1645–1715 AD, Lean, 2000] caused colder North Atlantic Sea Surface Temperatures during the LIA, resulting in an intensification of SAMS that led to unprecedented moisture levels over the Eastern Cordillera.

Diaz and Vera [2018] assessed four Paleoclimate Model Intercomparison Project 3/Climate Model Intercomparison Project 5 [PMIP3/CMIP5, Braconnot *et al.*, 2011] model ensemble runs between 850 and 2005 AD over South America. These authors found that the models can correctly reproduce temperature variations over the past millennium (with respect to paleoclimate proxy information) but cannot represent the associated changes in precipitation. Similarly, we considered temperature and precipitation time series of two ensemble runs with paleoclimate proxy information from Michel [2020] and Tardif *et al.* [2019] thereby corroborating the findings of Diaz and Vera [2018].

Diaz and Vera [2018] also analyzed large-scale atmospheric conditions (250 hPa and 800 hPa zonal winds) of PMIP3/CMIP5 ensemble runs and showed an equatorial shift of the southern branch of the Hadley cell during the LIA that resulted in a wetter tropical South America [Lu and Vecchi, 2014]. However, because the simulated precipitation amounts do not match proxy information, these models cannot be used to compare past precipitation amounts and present conditions.

Glacier modeling can be used to assess climate conditions which lead to a known past glacier extent. Based on a synthesis of sensitivity studies of tropical South American glaciers, Kaser [1999] attributed two thirds of the glacier retreat in the Cordillera Blanca since the LIA to a decrease in vapor pressure, and the remaining third to an increase in air temperature. Malone *et al.* [2015] applied a coupled ice-flow mass balance model on the QIC to reconstruct annual climate conditions during the LIA and concluded that

the glacier is more sensitive to temperature than to precipitation. Finally, Rabatel *et al.* [2005, 2008] applied the Kaser [2001] model and Hastenrath [1984] approach to Bolivian tropical glaciers and found that for the glaciers to have reached their maximum extent during the LIA, a 20–30% increase in precipitation (that goes hand-to-hand with an increase in cloudiness) and cooler temperatures ( $\sim -1$  to  $-1.2$  K) with respect to today’s climate conditions would have been required.

These different studies suggest that during the LIA, precipitation amounts were between 20 and 40% higher than today and that the temperature was 1 to 1.5 °C lower. However, uncertainties on how this extra precipitation was distributed within the year remain, which is just what our study aims to clarify, as using an energy balance model is the only way to investigate the effect of seasonal precipitation patterns on the annual surface mass balance.

### 3. Method

We used the distributed surface energy balance model [DEBAM, Hock and Holmgren, 2005] to simulate the glacier surface mass balance of Zongo Glacier over the reconstructed surface area of the glacier during the LIA. The model is forced by hourly time series of meteorological data based on measurements recorded by an automatic weather station for nine years distributed between 1999 and 2017. The observations are used to construct four climate scenarios that are then assessed based on their ability to yield a near-balanced mass budget. Further details are given below.

#### 3.1. Mass balance model

##### 3.1.1. Model description

DEBAM simulates the glacier surface mass balance and melt discharge at hourly intervals over the grid cells of a digital elevation model ( $20 \times 20$  m cells) using an energy-balance approach [Hock and Holmgren, 2005]. In this study, we use the multi-year calibration of Zongo by Autin *et al.* [2022]. The model requires seven input meteorological variables (air temperature and relative humidity, wind speed, precipitation, incoming short and longwave radiation and

outgoing longwave radiation) and solves the following surface energy balance equation:

$$Q_M = SW_{in}(1 - \alpha) + LW_{net} + H + LE + Q_G + R \quad (1)$$

where  $Q_M$  is the melt energy,  $SW_{in}$  is the incoming shortwave radiation,  $\alpha$  the albedo,  $LW_{net}$  the net longwave radiation balance,  $H$  and  $LE$  are the turbulent sensible and latent heat fluxes, respectively,  $Q_G$  is the subsurface heat flux and  $R$  the sensible heat supplied by rain [negligible over Zongo Glacier, Sicart *et al.*, 2011]. The model convention is such that energy fluxes directed towards the surface are positive and those away from the surface are negative.

Incoming shortwave radiation was extrapolated across the glacier by splitting it into its direct and diffuse components. The albedo was modeled using a version of Oerlemans and Knap [1998]’s albedo parameterization adapted to tropical glaciers. This parameterization accounts for the rapid alternation (a few days) of accumulation and melt in the wet season, and the impact of ice on the albedo over shallow snow depths [Sicart, 2002]. The incoming longwave radiation flux was assumed to be spatially constant.

Surface temperature was calculated at the AWS from the outgoing longwave radiation measurements and an altitudinal gradient of  $-0.1$  K/100 m was applied to extrapolate surface temperatures across the glacier (with an upper limit of 273.15 K). The subsurface snow module [Hock and Tijm-Reijmer, 2012] was not used to evaluate spatial changes in the surface temperature due to lack of data to constrain the model (i.e. subsurface temperature and density profiles). This implies that we neglected the sub-surface heat flux in our simulations.

The sensible and latent turbulent heat fluxes were calculated according to the aerodynamic profile method between the glacier surface and the measurement height (wind speed, air temperature and relative humidity) based on the Monin–Obukhov similarity theory [see Hock and Holmgren, 2005 for more details]. The stability functions were based on Beljaars and Holtslag [1991] for stable conditions and on the Businger–Dyer expressions from Paulson [1970] for unstable conditions. Relative humidity and wind speed were considered spatially constant across the glacier.

Discharge at the glacier terminus was simulated using a runoff module that routes glacier melt and rain water through the glacier using three linear

reservoirs representing firn, snow and ice [storage constants of 350, 30 and 16 h, respectively, taken from Sicart *et al.*, 2011]. In addition, for non-glacierized surfaces (30% of the catchment in the recent climate), a runoff coefficient of 0.8 was considered [based on Ribstein *et al.*, 1995].

### 3.1.2. Model calibration and validation

We used the model parameter values from Autin *et al.* [2022], who calibrated and validated the model over Zongo Glacier over nine years distributed between 1999 and 2017. This calibration, summarized on Table 1, was a trade-off between years with high and low mass losses where particular emphasis was placed on accurately representing the transition and the wet season, as they play a key role both in the annual surface mass balance and in year-to-year variability. The transition season is the period when the glacier loses on average half its annual mass in the ablation zone, while the wet season is the accumulation period. Because their calibration did not include the multi-layer snow model, melt is overestimated during the dry season (JJA) which contributes to most of the average annual net mass loss overestimation [based on the 9 simulated years, the mass loss overestimation is 0.18 m w.e., when the average mass loss is  $-0.88$  m w.e., Autin *et al.*, 2022].

Analysis of 19 years of daily discharge and precipitation data provided by Ramallo [2013] showed that only 9% of the annual volume passes through the weir at TUBO (Figure 1) during the dry season. Not all of this discharge is a result of glacier mass loss, as an average of 4.3% of the annual precipitation occurred over the same period. Nonetheless, most of the discharge observed at TUBO comes from the glacier meltwater as its catchment is 70% glacierized and the snow on the moraines melts completely in a few days [e.g. Lejeune, 2009]. This low dry season discharge highlights the limited mass loss that occurs at this time of the year [see also Autin *et al.*, 2022, Sicart *et al.*, 2011].

Therefore, the dry season is generally a period of low ablation whereas the high variability of the mass balance in the transition and wet seasons mostly controls the interannual ablation and accumulation variability. As model uncertainties are high during the dry season (importance of poorly known turbulent fluxes plus we disregard the subsurface heat flux), we end the simulations on May 31.

To achieve a 1 K cooling representative of the climate in the late 17th century, the AWS measurements were applied to a grid cell at 4850 m a.s.l. instead of at 5050 m a.s.l. (the method is detailed in Section 3.2.1). To avoid unrealistically high precipitation amounts at the top of the glacier caused by lowering the elevation of the forcing data, we applied the precipitation gradient of +10%/100 m used by Autin *et al.* [2022] from the glacier front up to 5200 m a.s.l. [instead of up to 5400 m a.s.l. in Autin *et al.*, 2022].

## 3.2. Input datasets

### 3.2.1. Glacier extent at the LIA maximum extent and model initialization

Using lichenometry techniques, the LIA maximum extent of the glacier was dated to  $1680 \pm 28$  AD [Rabatel *et al.*, 2008]. A digital elevation model (DEM) of Zongo Glacier was reconstructed by redrawing contour lines so that the glacier fills the moraines [Rabatel, 2005]. Between the LIA maximum extent and 2012, the glacier retreated 1.5 km, the terminus elevation rose by 550 m and the glacier lost 43% of its surface area and  $0.16 \pm 0.01$  km<sup>3</sup> of ice (see the red and black lines outlining the glacier on Figure 1).

We hypothesize that since tropical glaciers react rapidly to climate perturbations [Kaser, 1999, Rabatel, 2005], a hydrological year for which the glacier is close to equilibrium ( $B \approx 0$  m w.e.) in the current climate or during the LIA is representative of their respective steady state climate.

To obtain information on potential LIA glacier equilibrium characteristics (to serve as comparison for the simulation results), we evaluated the LIA steady state equilibrium-line altitude (ELA<sub>0</sub>) considering the frequently used constant area accumulation ratio (AAR) method [e.g. Rabatel, 2005, Jomelli *et al.*, 2009]. We evaluated the current climate ELA<sub>0</sub> (5233 m a.s.l.) by linearly interpolating 25 observed annual ELAs as a function of surface mass balance. We then defined the corresponding AAR (0.68) based on the mean AAR value obtained from the existing glacier digital elevation models [DEM, Autin *et al.*, 2022]. Considering a constant AAR, we derived the LIA ELA<sub>0</sub> (ELA<sub>0,LIA</sub> = 5078 m a.s.l., i.e. 155 m lower).

The equilibrium snow line altitude (SLA<sub>0</sub>) for the LIA maximum extent was considered to have



**Table 1.** Summary of the main parameter values used for the DEBAM simulations

Parameter	Value
Fresh snow albedo	$\alpha_{\text{fresh-snow}} = 0.85$
Firn albedo	$\alpha_{\text{firn}} = 0.6$
Ice albedo	$\alpha_{\text{ice}} = 0.3$
Clear sky transmissivity for solar radiation	$\tau_{\text{clear-sky}} = 0.8$
Roughness height of momentum over ice	$z_{0\text{ice}} = 0.026 \text{ m}$
Roughness heights of temperature, humidity and momentum over snow	$z_{0\text{snow}} = z_{0T} = z_{0q} = 0.0026 \text{ m}$
Precipitation gradient from 4370 to 5200 m asl	$\frac{\partial P}{\partial z} = +10\%/100 \text{ m}$
Glacier surface temperature gradient	$\frac{\partial T_s}{\partial z} = -0.1 \text{ K}/100 \text{ m}$

shifted by the same elevation as the  $ELA_0$  putting it at an altitude of 4883 m a.s.l. considering the recent climate  $SLA_0 = 5037 \text{ m a.s.l.}$  [based on data from Rabatel *et al.*, 2012]. The  $SLA_0$  defined this way was considered as the limit of the firn for model initialization.

### 3.2.2. LIA climate scenarios

We created four LIA climate scenarios based on nine years of available meteorological data between 1999 and 2017 [Autin *et al.*, 2022]. All four scenarios assume a 1 K reduction in air temperature compared to the current climate. Three scenarios assume a 19–22% increase in annual precipitation based on paleoclimate proxy information and glacier climate studies of the past (Section 2.2), but differ in the way the additional precipitation is distributed across the year:

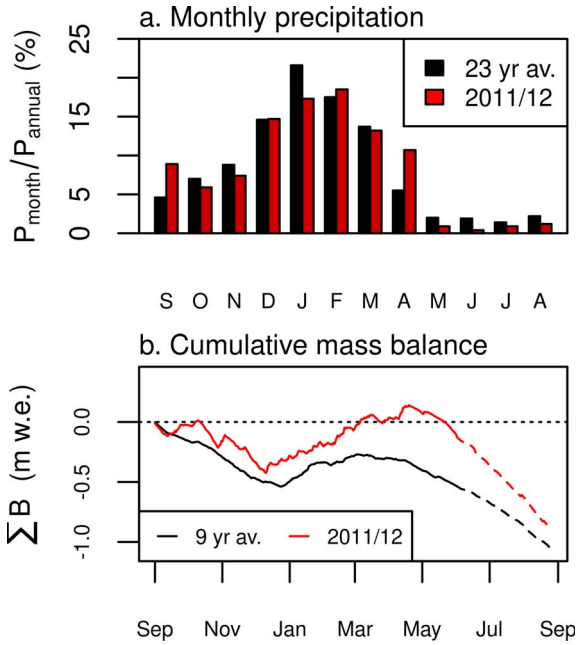
- Reference scenario: no difference in precipitation compared to the current climate
- Scenario 1: an earlier onset and longer wet season
- Scenario 2: a wetter wet season (December to March)
- Scenario 3: a wetter transition season (September–November) and April–May (the second transition period).

The reference scenario (hydrological year 2011/12) was selected from the nine years of glacier observations so that the precipitation seasonality most closely matched the average monthly variations observed in the 23 years of precipitation

from PLATAFORMA, which we assumed to represent current climate precipitation seasonality (Figures 2a, 3a). We use precipitation data from this AWS, rather than the on-glacier SAMA AWS to define average seasonality due to the much longer record (the annual amounts are well correlated:  $R^2 = 0.74$ ). In addition, when the model is applied to the 2012 geometry, the surface mass balance up to June for 2011/12 is close to 0 m w.e. making it an ideal candidate to assess the impact of cooling on the glacier LIA extent mass balance (Figure 2b).

Scenarios 1 to 3 were obtained by replacing selected months in 2011/12 by the same month's data from other years in the 9-year data set, chosen to yield an increase of  $\sim 20\%$  in annual precipitation compared to the long term average. We chose this procedure in preference to artificially adjusting precipitation amounts to preserve consistency between all meteorological variables for each month. In detail, we constructed the three precipitation scenarios as follows:

Scenario 1 (an earlier and longer wet season) was obtained by replacing the 2011/12 October and November data by the data from the same month of another year chosen among the two wettest months in the dataset (Figure 3b). Scenario 2 (a more intense wet season) was obtained by replacing the months of December to March by those in the dataset that had the highest number of events  $\geq 2 \text{ mm}\cdot\text{d}^{-1}$  (Figure 3c). Finally, scenario 3 (wetter September, October, November, April and May), was obtained by selecting the months in the transition seasons that had above average precipitation compared to the long term on-glacier average (Figure 3d). For all the scenarios, we

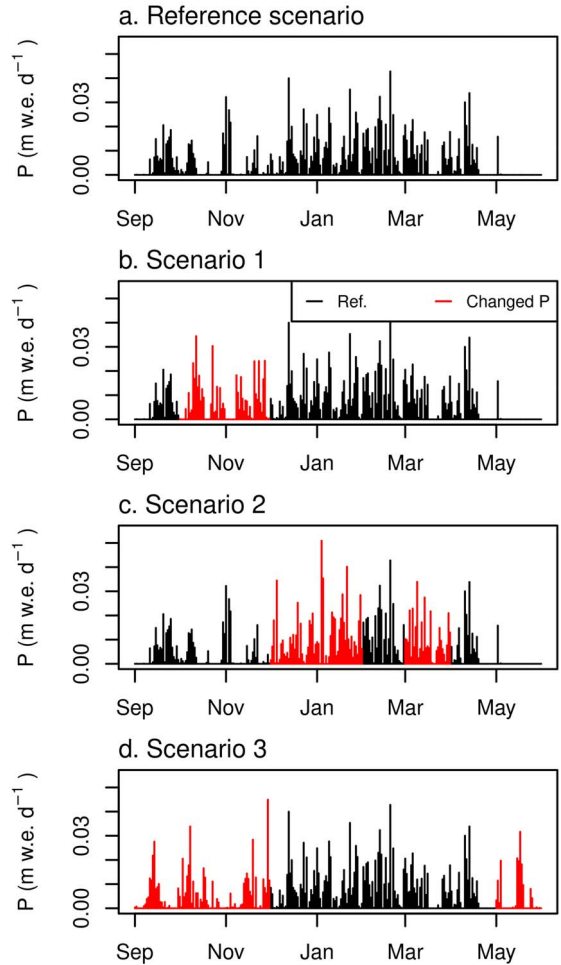


**Figure 2.** (a) Proportion of annual precipitation for each month at the on-glacier AWS SAMA (2011/12) and off-glacier AWS PLATAFORMA (average of 23 years between 1991 and 2015). (b) Simulated cumulative surface mass balance for the 9-year average (1999–2017) and 2011/2012 (reference scenario) over the current glacier geometry. The dashed part of the cumulative surface mass balance lines represent the period for which the model systematically overestimates melt since the sub-surface heat flux is neglected.

used a trial-and-error procedure to determine which year’s monthly data to use to replace corresponding data in the 2011/2012 dataset, to achieve the targeted ~20% increase in annual precipitation amounts.

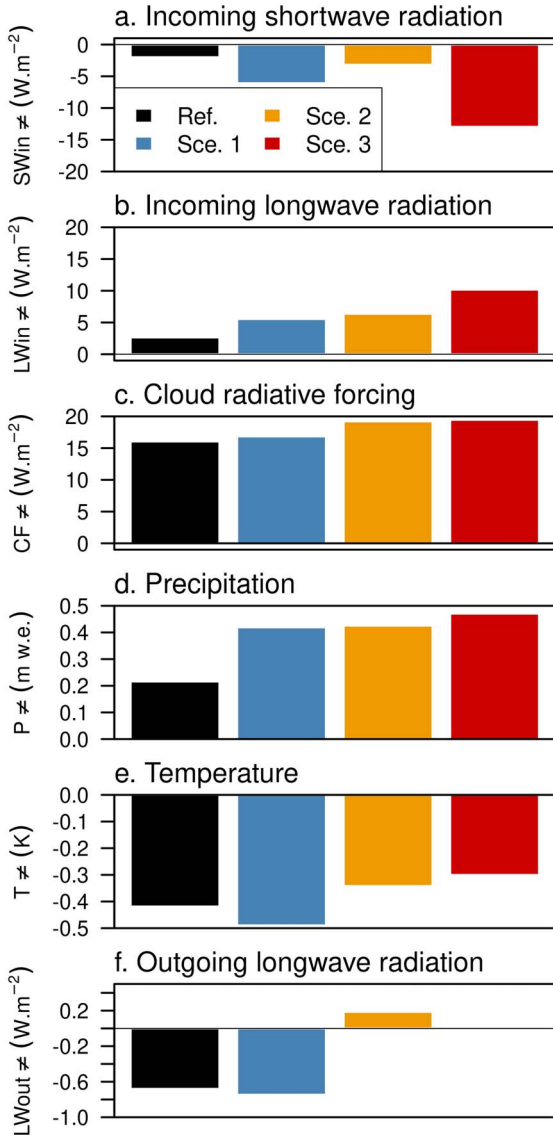
The reference scenario has 1.70 m w.e. of annual precipitation while scenarios 1 to 3 have 1.92, 1.92 and 1.97 m w.e., respectively, which represents a 6% increase in precipitation for the reference scenario, of 19% for scenarios 1 and 2, and a 22% increase for scenario 3, compared to the average of the nine years of the current climate (1.61 m w.e.).

Comparing the scenarios with the 9-year average (up to May 31) revealed that all the scenarios have less incoming shortwave radiation (Figure 4a) and increased longwave radiation (Figure 4b). The latter is due to increased cloud radiative forcing that summa-



**Figure 3.** Daily precipitation in the four LIA climate scenarios analyzed in this study. The modifications applied to the reference scenario (2011/2012) are in red. The precipitation distribution after the end of May is not accounted for in the simulations.

rizes the impact of the clouds on the incoming radiation fluxes (Figure 4c). This is a direct result of selecting/creating years with above-average precipitation (Figure 4d). All scenarios are colder than the measured 9-year average (Figure 4e), a result of the increased cloudiness and associated reduced incoming radiation. Finally, all the scenarios have annual scale glacier surface temperatures close to the nine-year average (illustrated by the mean outgoing longwave radiation in Figure 4f).



**Figure 4.** Annual scale differences between the scenarios and the 9-year average ( $X_{Sc} - X_{RT}$ ) of (a) incoming shortwave and (b) longwave radiation, (c) cloud radiative forcing, (d) precipitation, (e) air temperature and (f) outgoing longwave radiation used to derive the glacier surface temperature.

## 4. Results and discussion

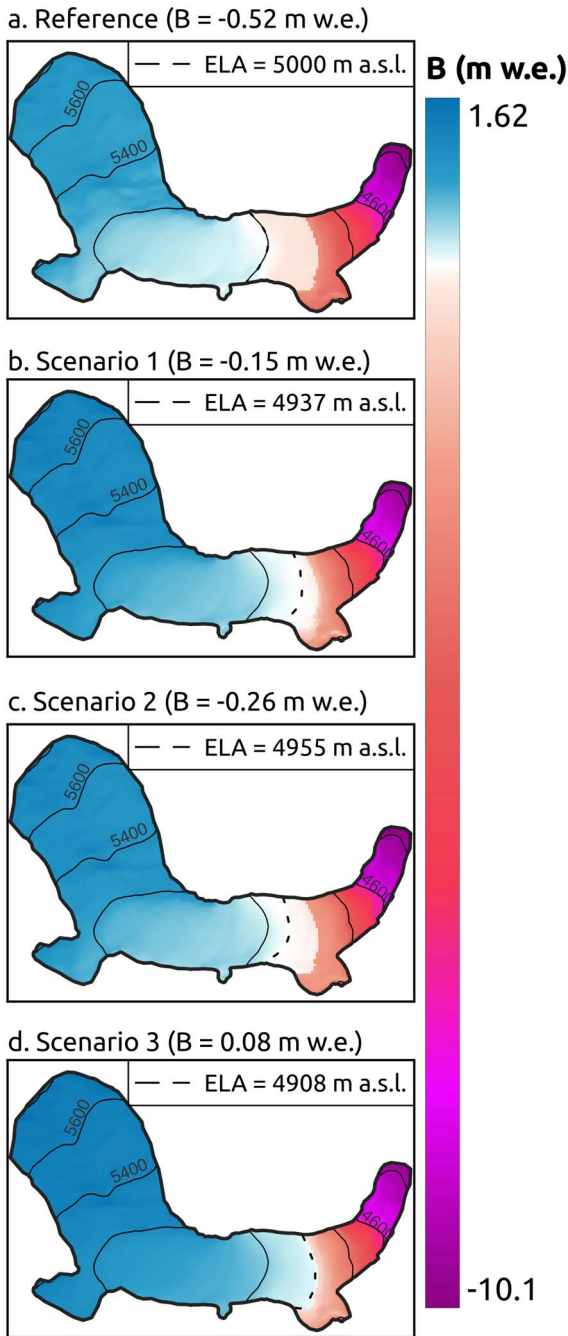
### 4.1. Surface mass balance for the LIA glacier geometry

Figure 5 shows the impact of the scenarios on the cumulative surface mass balance between September 1 and May 31. At the glacier scale, the reference scenario yields a highly negative surface mass balance (Figure 5a,  $B = -0.52$  m w.e.), scenario 1 results in close to equilibrium conditions (Figure 5b,  $B = -0.15$  m w.e.). Scenario 2 results in a slightly more negative mass balance (Figure 5c,  $B = -0.26$  m w.e.). Finally, scenario 3 results in a slightly positive surface mass balance (Figure 5d,  $B = 0.08$  m w.e.).

In scenario 3, the surface mass balance reaches 1.62 m w.e. in the upper reaches of the glacier (Figure 5d). Considering that melt can be disregarded over this part of the glacier (at about 5800 m a.s.l.), it is a reasonable value because the annual precipitation amounts received at the AWS (close to 2 m w.e. for all scenarios) which, via the precipitation gradient applied in the simulations (+10%/100 m up to 5200 m a.s.l.), implies that over 2.56 m w.e. reaches the upper part of the glacier.

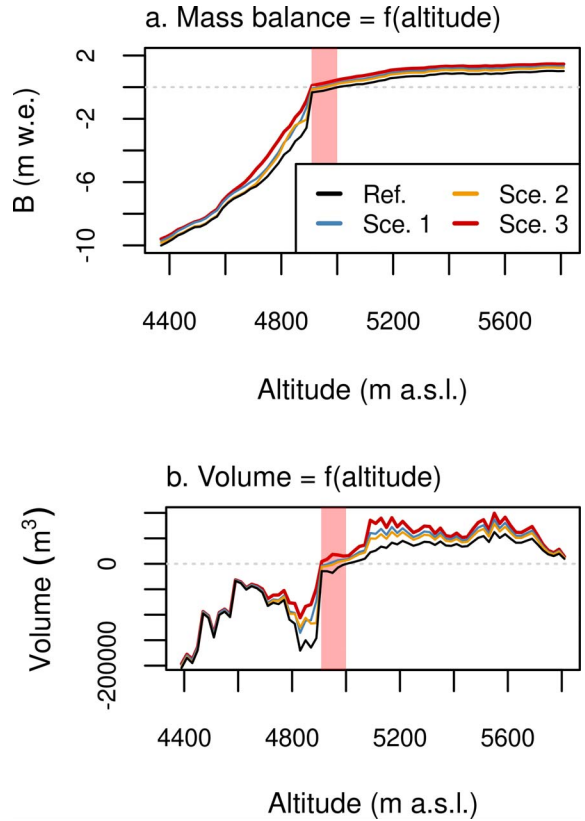
At the glacier terminus, the cumulative mass loss, which ranges between 9.0 and 10.1 m w.e. depending on the scenario (Figure 5), is significantly higher than that observed in recent times, when the glacier wide mass balance has been close to zero (for example, measurements over the year 2000/2001 show  $B_{Glacier-wide} = 0.49$  m w.e. and  $B_{Glacier-terminus} = -6.24$  m w.e.). This difference can be explained by the larger accumulation zone in the LIA configuration (2.50 km<sup>2</sup> versus 1.55 km<sup>2</sup> in 2000/2001) and similar annual precipitation amounts (2000/2001 is one of the wettest year in the current climate dataset) leading to a larger accumulation volume (an extra  $1.8 \times 10^6$  m<sup>3</sup>). As a result, the down-glacier ice flux is strengthened during the LIA, allowing the glacier front to reach low altitudes where melt rates are high (especially since in the lower reaches of the LIA glacier extent, the slope of the bedrock is steep and the width of the tongue is constrained by the topography, top inset in Figure 1).

The ablation area of tropical glaciers is characterized by steep altitudinal mass balance gradients due to marked variations in albedo [Sicart *et al.*, 2011]. The simulations give similar mass balance gradients during the LIA as under the current climate (around



**Figure 5.** Annual surface mass balance maps for the four LIA scenarios. The dashed lines represent the simulated ELA.

2 m w.e./100 m, Figure 6a) probably because this gradient is mostly controlled by atmospheric variables and the LIA scenarios were built using shuffled



**Figure 6.** Surface mass balance as a function of altitude (a) and corresponding changes in mass (b) in the four scenarios. The shaded area highlights the altitudinal range for the simulated equilibrium-line altitudes (4908–5000 m a.s.l.).

present-day meteorological forcing data.

For the LIA scenarios, the specific mass turnover  $\tau$  [Equation (2), e.g., Ohmura et al., 1992] was larger than for recent climatic conditions ( $\tau_{LIA, \text{all scenarios}} > 2$  m w.e. whereas  $\tau_{2000/01} = 0.98$  m w.e., Table 2) emphasizing the role of the ice flux in compensating for the melt rates in the ablation zone.

$$\tau = \frac{c + |a|}{2} \tag{2}$$

where  $\tau$  is the specific mass turnover,  $c$  the specific mass gain (in the accumulation zone) and  $a$  is the specific mass loss (in the ablation zone).

Considering a constant AAR method to define the ELA<sub>0</sub> is not valid here as this method yields a value that is much higher than our simulations show (ELA<sub>0,LIA</sub> = 5078 m a.s.l. with the AAR method versus 4908 to 5000 m a.s.l. depending on the scenario). Indeed, the AAR obtained with the LIA simulations is  $\sim 0.8$ , whereas the AAR<sub>0</sub> for the current climate is 0.68. Based on the analysis of the specific mass turnover and altitudinal mass balance gradients, this method is not valid primarily because of the topographic conditions (narrow and steep but because of the long ablation zone with a small surface area). This topographical setting coupled with the strong down-glacier ice flux enabled the glacier terminus to reach  $\sim 500$  m below the ELA<sub>0</sub> during the LIA, as opposed to  $\sim 250$  m in current climate conditions.

Other methods exist to reconstruct past ELA<sub>0</sub>, for example, based on the altitude of lateral moraines, Rabatel [2005] estimated the ELA<sub>0</sub> during the LIA to be at 5090 m a.s.l. Based on our results, this altitude is overestimated by  $\sim 150$  m, suggesting that the lateral moraine method can only give a maximum ELA due to uncertainties linked to moraine accretion from the glacier fluctuations between the LIA maximum extent and now, or by moraine erosion since the glacier retreat.

Mass balance (Figure 6a) and changes in volume (Figure 6b) by altitude make it possible to assess the variability of the spatial mass balance induced by the LIA scenarios. The mass balance profiles show high variability in the ablation zone. Analysis of changes in simulated snow heights, albedo and mass balance in the ablation zone (4400–4850 m a.s.l.) showed that this variability is driven by albedo feedback effects (not shown). At the annual scale, the increased variation in albedo with altitude is due to the increased influence of snow temporarily covering the ice (from  $\pm 0.002$  at 4400 m a.s.l. to  $\pm 0.04$  at 4850 m a.s.l.). Hence, via an albedo feedback effect, the timing and intensity of the precipitation play an important role in controlling melt rates in the upper reaches of the ablation zone.

Above  $\sim 4600$  m a.s.l., scenarios 1 and 3 (Figure 6a, blue and red lines, respectively) diverge, with a less negative mass balance gradient in scenario 1 because in scenario 3, the precipitation events are more

evenly distributed, resulting in higher albedo values. Similarly, above  $\sim 4700$  m a.s.l., scenario 2 shows a shallower mass balance profile than the reference scenario (orange and black lines, respectively), because intense precipitation events throughout the wet season enable a thicker snowpack, thereby increasing the albedo and reducing annual mass loss.

Table 2 shows that the more positive the glacier-wide surface mass balance, the more negative the specific ablation and, in some cases, the lower the specific accumulation (observed in scenarios 1 and 2). Considering the mean differences between the reference scenario and in the three scenarios with changes in precipitation patterns, the variability of the specific ablation rate is higher than that of the accumulation rate (whereas  $\Delta\bar{a} = 0.94 \pm 0.46$  m w.e.  $\Delta\bar{c} = 0.01 \pm 0.07$  m w.e., Table 2) because of the effect of albedo feedback on the melt rate.

Considering the two most extreme scenarios in terms of surface mass balance value (the reference scenario and scenario 3), despite higher variability of the surface mass balance profile in the lower reaches of the glacier (below the ELA, Figure 6a), the biggest differences in volume occur in the upper reaches (above the ELA, Figure 6b), suggesting that accumulation processes play an important role in the glacier-wide surface mass balance. Compared to the reference scenario, scenario 3 generates an excess in volume of  $0.55 \times 10^6$  m<sup>3</sup> ( $1.1 \times 10^6$  m<sup>3</sup>) in the lower (upper) reaches of the glacier.

#### 4.2. *Impact of the climate scenarios on the surface energy fluxes*

Scenarios 1 and 3 yield close to equilibrium annual glacier-wide surface mass balances whereas the reference scenario and scenario 2 result in negative mass balance conditions. The main differences in melt rates between these two groups occur between September and November (Figure 7a). As mentioned in Section 2.1, the transition season is characterized by increased solar radiation at the top of atmosphere and a low surface albedo, leading to large net shortwave energy fluxes that are responsible for the highest melt rates of the year, meaning this period plays a key role in controlling the annual surface mass balance [Sicart *et al.*, 2011]. As a result,

**Table 2.** Summary of simulated glacier-wide surface mass balance  $B$ , specific ablation  $a$ , accumulation  $c$ , and mass turnover  $\tau$  in the four LIA scenarios along with the differences in  $a$  and  $c$  between the reference scenario and scenarios 1–3

Scenarios	$B$ (m w.e.)	$a$ (m w.e.)	$c$ (m w.e.)	$\tau$ (m w.e.)	$\Delta a$ (m w.e.)	$\Delta c$ (m w.e.)
Reference	−0.52	−3.31	0.96	2.13	0	0
1	−0.15	−4.28	0.90	2.59	0.97	0.06
2	−0.26	−3.78	0.93	2.35	0.47	0.03
3	0.08	−4.69	1.04	2.86	1.38	−0.07

the two scenarios that are the most efficient at limiting mass loss are those with increased precipitation amounts and frequencies during the transition season (scenarios 1 and 3). Indeed, clouds reduce the incoming shortwave radiation fluxes and snowfall increases the glacier albedo, thereby reducing melt energy compared to the other two scenarios (Figure 7b).

During the wet season, scenario 2 differs from scenarios 1 and 3 because it was constructed to maximize the number of large-scale precipitation events (Section 3.2.2). It reduces the amount of melt energy because the combined effect of clouds and precipitation reduces the net shortwave energy fluxes more than the clouds increase the net longwave energy budget (Figures 7b and c, respectively). This reduction, combined with the large precipitation amounts in this scenario explain the rapid mass gains observed in Figure 7a.

An early and longer wet season (scenario 1) is more efficient at reducing mass loss than a more intense wet season (scenario 2) because it reduces the incoming shortwave radiation (cloud cover) and increases the albedo (snowfall events) during the period of maximum potential solar radiation (summer solstice), which limits the mass loss over the transition season. During the core wet season, increased precipitation intensity and frequency (scenario 2) increases the mass gain but does not compensate for the losses during the transition season (Figure 7a).

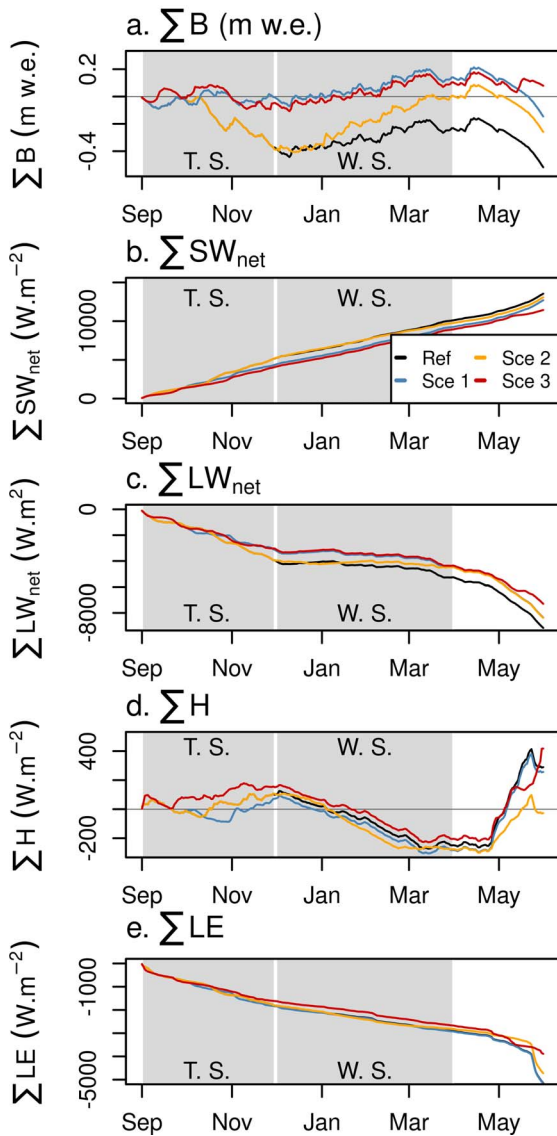
During the core wet season, the glacier-wide averaged cumulative sensible heat flux is negative in all the scenarios, showing that the temperature of the glacier surface remains higher than the temperature of the air (Figure 7d). The higher temperature in the simulations is probably because in the model, the air temperature is extrapolated using a stronger altitudinal gradient than the surface temperatures

(−0.55 K/100 m versus −0.1 K/100 m), resulting in a large part of the glacier where the simulated surface temperature is warmer than the air. However, considering the small cumulative sums of these fluxes over the year (−200 and 200  $\text{W}\cdot\text{m}^{-2}$ ), the impact on the melt rate is limited. Finally, in all the scenarios, the latent heat fluxes act as an energy sink (sublimation) whose annual amount is about half the sum of the net longwave energy flux (Figure 7e). Because more energy is lost *via* the latent heat flux than the energy provided by the sensible heat flux, the sum of the turbulent fluxes is negative (energy sink), a feature observed under the current climate [e.g., Sicart *et al.*, 2011].

#### 4.3. Sources of modeling errors

An important source of error is that we neglect the subsurface heat flux in the simulations, implying errors in the surface temperature. Although under the current climate, the subsurface heat flux only plays a significant role in reducing melt rates via nighttime cooling over the glacier’s accumulation zone and over the whole surface of the glacier in the dry season [e.g., Sicart *et al.*, 2011], this heat flux may be significant during a large part of the year in the cooler LIA climate, particularly over the upper reaches of the glacier. Errors in the simulated surface temperature are partly offset by the surface temperature altitudinal gradient applied in the simulations. As the accumulation area is larger during the LIA than under the current climate (AAR = 0.8 versus 0.68), the model may overestimate the glacier-wide melt rates.

The model may also underestimate the turbulent fluxes. This is due to a number of reasons including the fact that a uniform wind speed is considered



**Figure 7.** Cumulative glacier-wide surface mass balance (a), net shortwave (b) and longwave (c) energy budgets along with the sensible (d) and latent (e) heat fluxes in the four LIA scenarios. The gray areas represent the transition (T.S.) and wet (W.S.) seasons.

across the glacier, or the fact that errors in the simulated albedo impact the type of surface simulated (snow/firn/ice) via imprecise melt rates. Overestimation of the simulated surface temperatures in the accumulation zone also influences the turbulent fluxes via a reduced surface-air temperature gradient. An-

other source of error is that the model considers constant stability functions throughout the year whereas in reality, these vary with the meteorological conditions [Sicart *et al.*, 2011]. As a result, the glacier wide latent heat flux is underestimated making the turbulent fluxes a smaller energy sink than they should be, thereby contributing to overestimating the melt rates.

Other sources of errors that impact the simulations are the air temperature and precipitation gradients which are poorly known under current climate conditions (and may have been different in the LIA climate). Considering these sources of errors in the modeling, the most important ones being that the subsurface heat flux is neglected and potential erroneous albedo simulations, it is likely that the model overestimates the melt rates and hence, the annual mass losses.

## 5. Concluding remarks

This study assessed the seasonal climate changes that occurred in tropical South America during the Little Ice Age (late 17th century) using a distributed surface energy balance applied to the tropical Zongo glacier (16° S, Bolivia) and scenarios that maintain physical coherence between the measured meteorological variables.

Using information provided by paleoclimate proxies, global climate model simulations and glacier-climate sensitivity studies of past glacier extents over tropical South America, we constructed three scenarios that focus on the distribution of precipitation over time. One scenario considered a wetter year (above average precipitation in September, October, November, April and May) and the other two others tested different wet season configurations: one considered an early onset of the wet season and the other a more intensive wet season. To ensure physical coherence between the measured variables, the scenarios were obtained by shuffling months of measurements of the current climate based on 9 years of continuous hourly measurements. The three scenarios were compared to a reference scenario in which the monthly precipitation is representative of the current climate and a 1.1 K decrease in temperature. The climate scenarios were assessed based on the resulting surface mass balance of the glacier's

LIA maximum extent. They were considered plausible if close to equilibrium conditions were evaluated ( $B \approx 0$  m w.e.).

The reference scenario was the one that resulted in the highest mass loss ( $B = -0.52$  m w.e.) suggesting that, by itself, 1.1 K cooling cannot explain the glacier's maximum extent during the LIA. Spreading precipitation out over the year, and more specifically, including more frequent precipitation events during the transition periods, via an albedo feedback effect, is key to reproducing a glacier that is close to equilibrium at its maximum extent during the LIA. In addition, a longer wet season (scenario 1,  $B = -0.15$  m w.e.) is more efficient in reducing mass loss than a more intense one (scenario 2,  $-0.26$  m w.e.), as the former shortens the transition period and hence limits the otherwise large mass losses that occur in the wet season. This confirms recent findings concerning the important role of the distribution of precipitation over the transition season in controlling the annual mass loss [e.g., Autin *et al.*, 2022].

Thus, the simulations indicate that the LIA climate was likely 1.1 K cooler with  $\sim 20\%$  extra precipitation at the annual scale, in rough agreement with Rabatel *et al.* [2008]. However, our method also allowed us to investigate the effects of changes in the seasonal distribution of precipitation on the mass balance. Our results suggest that the 20% annual increase in precipitation is in agreement with the LIA glacier extent only if increased precipitation occurs in the transition season (period of highest melt rates) that precede the core wet season (December–March).

The simulations also reveal a significant change in the AAR of the glacier from around 0.68 for the current climate versus 0.80 for the LIA climate, mostly due to topographic conditions (the ablation area was steep and narrow during the LIA). This suggests that methods based on constant AAR to reconstruct the LIA climate result in overestimation of the past ELA<sub>0</sub> of about 120 m. Indeed, we hypothesize that this topographic setting coupled with the large accumulation volumes favored a strong down-glacier ice flux that allowed the glacier to extend farther below the ELA during the LIA than what is observed under the current climate.

Applying the model to other glaciers in the tropical Andes with different morpho-topographic variables would provide further insights into which LIA scenar-

ios are most plausible and an in-depth understanding of the limits of the AAR method. Another possible further study includes coupling DEBAM to a model of glacier dynamics to better quantify the role of the ice flux and mass turnover in reaching glacier steady-state conditions.

## Acknowledgements

This study was conducted in the framework of the International Joint Laboratory LMI GREAT-ICE, the International Research Network Andes-C2H (IRD and Andean partners) and the French *Service National d'Observation* GLACIOCLIM ([www.glacioclim.osug.fr](http://www.glacioclim.osug.fr), UGA-OSUG, CNRS-INSU, IRD, IPEV, INRAE). GLACIOCLIM is coordinated in La Paz by Dr. Alvaro Soruco (UMSA/IGEMA) who organizes the follow-up of the glaciological measurements on Zongo Glacier. The authors are grateful to everyone involved in the long-term *in-situ* monitoring of Zongo Glacier and acknowledge the support of LabEx OSUG@2020 (*Investissements d'Avenir*—ANR-10-LABX-0056).

## References

- Apaéstegui, J., Cruz, F. W., Vuille, M., Fohlmeister, J., Espinoza, J. C., Sifeddine, A., Strikis, N., Guyot, J. L., Ventura, R., Cheng, H., and Edwards, R. L. (2018). Precipitation changes over the eastern Bolivian Andes inferred from speleothem ( $\delta^{18}\text{O}$ ) records for the last 1400 years. *Earth Planet. Sci. Lett.*, 494, 124–134.
- Autin, P., Sicart, J. E., Rabatel, A., Soruco, A., and Hock, R. (2022). Climate controls on the inter-seasonal and interannual variability of the surface mass and energy balances of a tropical glacier (Zongo Glacier, Bolivia, 16° S): new insights from the multi-year application of a distributed energy balance. *J. Geophys. Res. Atmos.*, 127(7), article no. e2021JD035410.
- Beljaars, A. and Holtslag, A. (1991). Flux parameterization over land surface for atmospheric models. *J. Appl. Meteorol.*, 30(3), 327–341.
- Beven, K. J. (1989). Changing ideas in hydrology: the case of physically based models. *J. Hydrol.*, 105, 157–172.
- Bird, B. W., Abbott, M. B., Vuille, M., Rodbell, D. T., Stansell, N. D., and Rosenmeier, M. F. (2011). A



- 2300-year-long annually resolved record of the South American summer monsoon from the Peruvian Andes. *Proc. Natl Acad. Sci. USA*, 108(21), 8583–8588.
- Braconnot, P., Harrison, S. P., Otto-Bliesner, B. L., Abe-Ouchi, A., Jungclauss, J., and Peterschmitt, J.-Y. (2011). The paleoclimate modeling intercomparison project contribution to CMIP5. *CLIVAR Exchanges*, 16(56), 15–19.
- Campos, J. L., Cruz, F. W., Ambrizzi, T., Deininger, M., Vuille, M., Novello, V. F., and Strikis, N. M. (2019). Coherent South American monsoon variability during the last millennium revealed through high-resolution proxy records. *Geophys. Res. Lett.*, 46(14), 8261–8270.
- Campos, N., Alcalá-Reygosa, J., Watson, S., Kougkoulos, I., Quesada Román, A., and Grima, N. (2021). Modeling the retreat of the Aneto Glacier (Spanish Pyrenees) since the Little Ice Age, and its accelerated shrinkage over recent decades. *Holocene*, 31, 1315–1326.
- De Marsily, G. (1994). Quelques réflexions sur l'utilisation des modèles en hydrologie. [Tribune libre]. *Rev. des sci. de l'eau/J. Water Sci.*, 7(3), 219–234.
- Diaz, L. B. and Vera, C. S. (2018). South American precipitation changes simulated by PMIP3/CMIP5 models during the Little Ice Age and the recent global warming period. *Int. J. Climatol.*, 38(6), 2638–2650.
- Francou, B., Ribstein, P., Saravia, R., and Tiriau, E. (1995). Monthly balance and water discharge of an inter-tropical glacier: Zongo Glacier, Cordillera Real, Bolivia, 16° S. *J. Glaciol.*, 41(137), 61–67.
- Garreaud, R., Vuille, M., and Clement, A. C. (2003). The climate of the Altiplano: observed current conditions and mechanisms of past changes. *Palaeogeogr. Palaeoclimatol. Palaeoecol.*, 194(1–3), 5–22.
- Grove, J. M. (1988). *The Little Ice Age*. Routledge, Oxfordshire.
- Hastenrath, S. (1984). *The Glaciers of Equatorial East Africa*. D. Reidel Publishing Co., Dordrecht. Guilders 195.
- Hastenrath, S. and Ames, A. (1995). Diagnosing the imbalance of Yanamarey Glacier in the Cordillera Blanca of Peru. *J. Geophys. Res.*, 100(D3), 5105–5112.
- Haug, G. H., Hughen, K. A., Sigman, D. M., Peterson, L. C., and Röhl, U. (2001). Southward migration of the intertropical convergence zone through the Holocene. *Science*, 293(5533), 1304–1308.
- Hock, R. and Holmgren, B. (2005). A distributed surface energy-balance model for complex topography and its applications to Storglaciaren. *J. Glaciol.*, 51(172), 25–36.
- Hock, R. and Tijm-Reijmer, C. (2012). A mass-balance, glacier runoff and multi-layer snow model DEBAM and DETIM distributed energy balance and distributed enhanced temperature index model users manual. <http://www2.gi.alaska.edu/~regine/modelmanual.pdf>.
- Hurley, J. V., Vuille, M., and Hardy, D. R. (2019). On the interpretation of the ENSO signal embedded in the stable isotopic composition of Quelccaya Ice Cap, Peru. *J. Geophys. Res. Atmos.*, 124(1), 131–145.
- Jomelli, V., Favier, V., Rabatel, A., Brunstein, D., Hoffmann, G., and Francou, B. (2009). Fluctuations of Andean tropical glaciers since the last millennium and palaeoclimatic implication: a review. *Palaeogeogr. Palaeoclimatol. Palaeoecol.*, 281, 269–282.
- Jomelli, V., Khodri, M., Favier, V., Brunstein, D., Ledru, M. P., Wagnon, P., Blard, P. H., Sicart, J. E., Braucher, R., Grancher, D., Bourlès, D. L., Braconnot, P., and Vuille, M. (2011). Irregular tropical glacier retreat over the Holocene epoch driven by progressive warming. *Nature*, 474(7350), 196–199.
- Kaser, G. (1999). A review of the modern fluctuations of tropical glaciers. *Glob. Planet. Change*, 22(1–4), 93–103.
- Kaser, G. (2001). Glacier-climate interaction at low latitudes. *J. Glaciol.*, 47(157), 195–204.
- Klemes, V. (1983). Conceptualization and scale in hydrology. *J. Hydrol.*, 65, 1–23.
- Lean, J. (2000). Evolution of the Sun's spectral irradiance since the Maunder Minimum. *Geophys. Res. Lett.*, 27, 2425–2428.
- Ledru, M.-P., Jomelli, V., Samaniego, P., Vuille, M., Hidalgo, S., Herrera, M., and Ceron, C. (2013). The Medieval Climate Anomaly and the Little Ice Age in the eastern Ecuadorian Andes. *Clim. Past*, 9(1), 307–321.
- Lejeune, Y. (2009). *Apports des modèles de neige CROCUS et de sol ISBA à l'étude du bilan glaciologique d'un glacier tropical et du bilan hydrologique de son bassin versant*. PhD thesis, UJF, Grenoble.
- Lenters, J. D. and Cook, K. H. (1997). On the origin of the Bolivian high and related circulation features of the South American climate. *J. Atmos. Sci.*, 54(5), 656–677.

- Lu, J. and Vecchi, G. (2014). *Hadley Circulation in Encyclopedia of the Atmospheric Sciences*. Elsevier, Amsterdam, 2nd edition.
- Malone, A. G. O., Pierrehumbert, R. T., Lowell, T. V., Kelly, M. A., and Stroup, J. S. (2015). Constraints on southern hemisphere tropical climate change during the Little Ice Age and Younger Dryas based on glacier modeling of the Quelccaya Ice Cap, Peru. *Quat. Sci. Rev.*, 125, 106–116.
- Michel, S. (2020). *Caractérisation des variations climatiques du dernier millénaire à l'aide de nouvelles méthodes statistiques: reconstruction paléoclimatiques et intégration dans un modèle de circulation globale du climat*. PhD thesis, Univ. Bordeaux.
- Morales, M. S., Christie, D. A., Villalba, R., Argollo, J., Pacajes, J., Silva, J. S., Alvarez, C. A., Llancabure, J. C., and Gamboa, C. C. (2012). Precipitation changes in the South American Altiplano since 1300 AD reconstructed by tree-rings. *Clim. Past*, 8(2), 653–666.
- Neukom, R., Gergis, J., Karoly, D. J., Wanner, H., Curran, M., Elbert, J., González-Rouco, F., Linsley, B. K., Moy, A. D., Mundo, I., Raible, C. C., Steig, E. J., Van Ommen, T., Vance, T., Villalba, R., Zinke, J., and Frank, D. (2014). Inter-hemispheric temperature variability over the past millennium. *Nat. Clim. Change*, 4(5), 362–367.
- Oerlemans, J. and Knap, W. H. (1998). A 1 year record of global radiation and albedo in the ablation zone of Morteratschgletscher, Switzerland. *J. Glaciol.*, 44(147), 231–238.
- Ohmura, A., Kasser, P., and Funk, M. (1992). Climate at the equilibrium line of glaciers. *J. Glaciol.*, 38(130), 397–411.
- Paul, F. and Bolch, T. (2019). *Glacier Changes Since the Little Ice Age*. Springer, Cham.
- Paulson, C. A. (1970). The mathematical representation of wind speed and temperature profiles in the unstable atmospheric surface layer. *J. Appl. Meteorol.*, 9, 857–861.
- Rabatel, A. (2005). *Chronologie et interprétation paléoclimatique des fluctuations des glaciers dans les Andes de Bolivie (16° S) depuis le maximum du Petit Âge Glaciaire (17ème siècle)*. PhD thesis, UJF Grenoble 1.
- Rabatel, A., Bermejo, A., Loarte, E., Soruco, A., Gomez, J., Leonardini, G., Vincent, C., and Sicart, J. E. (2012). Can the snowline be used as an indicator of the equilibrium line and mass balance for glaciers in the outer tropics? *J. Glaciol.*, 58(212), 1027–1036.
- Rabatel, A., Francou, B., Jomelli, V., Naveau, P., and Grancher, D. (2008). A chronology of the Little Ice Age in the tropical Andes of Bolivia (16° S) and its implications for climate reconstruction. *Quat. Res.*, 70(2), 198–212.
- Rabatel, A., Francou, B., Soruco, A., Gomez, J., Cáceres, B., Ceballos, J. L., Basantes, R., Vuille, M., Sicart, J.-E., Huggel, C., Scheel, M., Lejeune, Y., Arnaud, Y., Collet, M., Condom, T., Consoli, G., Favier, V., Jomelli, V., Galarraga, R., Ginot, P., Maisincho, L., Mendoza, J., Ménégoz, M., Ramirez, E., Ribstein, P., Suarez, W., Villacis, M., and Wagnon, P. (2013). Current state of glaciers in the tropical Andes: a multi-century perspective on glacier evolution and climate change. *Cryosphere*, 7(1), 81–102.
- Rabatel, A., Jomelli, V., Naveau, P., Francou, B., and Grancher, D. (2005). Dating of Little Ice Age glacier fluctuations in the tropical Andes: Charquini glaciers, Bolivia, 16 S. *C. R. Géosci.*, 337(15), 1311–1322.
- Ramallo, C. (2013). *Caractérisation du régime pluviométrique et sa relation à la fonte du Glacier Zongo (Cordillère Royale)*. PhD thesis, UGA, Grenoble.
- Ribstein, P., Tiriau, E., Francou, B., and Saravia, R. (1995). Tropical climate and glacier hydrology: a case study in Bolivia. *J. Hydrol.*, 165(1–4), 221–234.
- Sachs, J. P., Sachse, D., Smittenberg, R. H., Zhang, Z., Battisti, D. S., and Golubic, S. (2009). Southward movement of the Pacific intertropical convergence zone AD 1400–1850. *Nat. Geosci.*, 2(7), 519–525.
- Seibert, J. (1999). *Conceptual Runoff Models: Fiction or Representation of Reality?* Uppsala University Press, Uppsala, Sweden.
- Sicart, J. E. (2002). *Contribution à l'étude Des Flux d'énergie, Du Bilan de Masse et Du Débit de Fonte d'un Glacier Tropical: Le Zongo, Bolivie*. PhD thesis, Université Paris IV Pierre et Marie Curie.
- Sicart, J. E., Espinoza, J. C., Quéno, L., and Medina, M. (2016). Radiative properties of clouds over a tropical Bolivian glacier: seasonal variations and relationship with regional atmospheric circulation. *Int. J. Climatol.*, 36(8), 3116–3128.
- Sicart, J. E., Hock, R., Ribstein, P., Litt, M., and Ramirez, E. (2011). Analysis of seasonal variations in mass balance and meltwater discharge of the tropical Zongo Glacier by application of a dis-

- tributed energy balance model. *J. Geophys. Res.*, 119(D13), 1–18.
- Sicart, J. E., Villacís, M., Condom, T., and Rabatel, A. (2015). GREAT ICE monitors glaciers in the tropical Andes. *Eos*, 96.
- Sicart, J. E., Wagnon, P., and Ribstein, P. (2005). Atmospheric controls of the heat balance of Zongo Glacier (16° S, Bolivia). *J. Geophys. Res. Atmos.*, 110(12), 1–17.
- Solomina, O., Bradley, R. S., Hodgson, D. A., Ivy-Ochs, S., Jomelli, V., Mackintosh, A. N., Nesje, A., Owen, L. A., Wanner, H., Wiles, G. C., and Young, N. E. (2015). Holocene glacier fluctuations. *Quat. Sci. Rev.*, 111, 34.
- Solomina, O., Bradley, R. S., Jomelli, V., Geirsdottir, A., Kaufman, D., Koch, J., Masiokas, M., Miller, G., Nesje, A., Nicolussi, K., Owen, L., Wanner, H., Wiles, G., and Yang, B. (2016). Glacier fluctuations in the last 2000 years. *Quat. Sci. Rev.*, 149, 61–90.
- Soruco, A., Vincent, C., Rabatel, A., Francou, B., Thibert, E., Sicart, J. E., and Condom, T. (2015). Contribution of glacier runoff to water resources of La Paz City, Bolivia (16° S). *Ann. Glaciol.*, 56(70), 147–154.
- Tardif, R., Hakim, G., Perkins, W., Horlick, K., Erb, M., Emile-Geay, J., Anderson, D., Steig, E., and Noone, D. (2019). Last Millennium Reanalysis with an expanded proxy database and seasonal proxy modeling. *Clim. Past*, 15, 1251–1273.
- Thompson, L. G., Mosley-Thompson, E., Brecher, H., Davis, M., León, B., Les, D., Lin, P. N., Mashiotta, T., and Mountain, K. (2006). Abrupt tropical climate change: past and present. *Proc. Natl Acad. Sci. USA*, 103(28), 10536–10543.
- Thompson, L. G., Mosley-Thompson, E., Dansgaard, W., and Grootes, P. M. (1986). The Little Ice Age as recorded in the stratigraphy of the tropical Quelccaya ice cap. *Science*, 234(4774), 361–364.
- Troll, C. (1941). *Studien zur vergleichenden Geographie der Hochgebirge der Erde, Bonner Mitt. 21*. Univ. Bonn, Bonn, Germany.
- Vimeux, F., Ginot, P., Schwikowski, M., Vuille, M., Hoffmann, G., Thompson, L. G., and Schotterer, U. (2009). Climate variability during the last 1000 years inferred from Andean ice cores: a review of methodology and recent results. *Palaeogeogr. Palaeoclimatol. Palaeoecol.*, 281(3–4), 229–241.
- Vincent, C., Kappenberger, G., Valla, F., Bauder, A., Funk, M., and Le Meur, E. (2004). Ice ablation as evidence of climate change in the Alps over the 20th century. *J. Geophys. Res.*, 109(D10), 1–9.
- Vincent, C., Meur, E. L., Six, D., and Funk, M. (2005). Solving the paradox of the end of the Little Ice Age in the Alps. *J. Geophys. Res.*, 32(9), 1–4.
- Vuille, M., Burns, S. J., Taylor, B. L., Cruz, F. W., Bird, B. W., Abbott, M. B., Kanner, L. C., Cheng, H., and Novello, V. F. (2012). A review of the South American monsoon history as recorded in stable isotopic proxies over the past two millennia. *Clim. Past*, 8(4), 1309–1321.
- Wagnon, P., Ribstein, P., Francou, B., and Pouyaud, B. (1999). Annual cycle of energy balance of Zongo Glacier, Cordillera Real, Bolivia. *J. Geophys. Res.*, 104(D4), 3907–3923.