



OPEN ACCESS

Original research

Non-functional pancreatic neuroendocrine tumours: ATRX/DAXX and alternative lengthening of telomeres (ALT) are prognostically independent from ARX/PDX1 expression and tumour size

Wenzel M Hackeng ¹, Lodewijk A A Brosens ¹, Joo Young Kim,² Roderick O'Sullivan,³ You-Na Sung,⁴ Ta-Chiang Liu,⁵ Dengfeng Cao,⁵ Michelle Heayn,⁶ Jacqueline Brosnan-Cashman,⁷ Soyeon An,⁸ Folkert H M Morsink,¹ Charlotte M Heidsma,⁹ Gerlof D Valk,¹⁰ Menno R Vriens,¹¹ Els Nieveen van Dijkum,⁹ G Johan A Offerhaus ¹, Koen M A Dreijerink,^{1,12} Herbert Zeh,¹³ Amer H Zureikat,¹⁴ Melissa Hogg,¹⁵ Kenneth Lee,¹⁴ David Geller,¹⁴ J Wallis Marsh,¹⁶ Alessandro Panizza,¹⁴ Melanie Ongchin,¹⁴ James F Pingpank,¹⁴ Nathan Bahary,¹⁷ Muaz Aijazi ¹⁷, Randall Brand,¹⁷ Jennifer Chennat,¹⁷ Rohit Das,¹⁷ Kenneth E Fasanella,¹⁷ Asif Khalid,¹⁷ Kevin McGrath,¹⁷ Savreet Sarkaria,¹⁷ Harkirat Singh,¹⁷ Adam Slivka,¹⁷ Michael Nalesnik,⁶ Xiaoli Han,⁶ Marina N Nikiforova,⁶ Rita Teresa Lawlor,¹⁸ Andrea Mafficini,¹⁸ Boris Rusev,¹⁸ Vincenzo Corbo,^{18,19} Claudio Luchini ^{19,20}, Samantha Bersani,¹⁹ Antonio Pea,²¹ Sara Cingarlini,^{21,22} Luca Landoni,^{20,21} Roberto Salvia,^{20,21} Massimo Milione,²³ Michele Milella,^{20,22} Aldo Scarpa ^{18,19,20}, Seung-Mo Hong,⁴ Christopher M Heaphy ^{7,24}, Aatur D Singhi ⁶

► Additional supplemental material is published online only. To view please visit the journal online (<http://dx.doi.org/10.1136/gutjnl-2020-322595>).

For numbered affiliations see end of article.

Correspondence to

Dr Aatur D Singhi, Department of Pathology, University of Pittsburgh Medical Center Health System, Pittsburgh PA 15213, USA;

singhiad@upmc.edu, Dr Wenzel M Hackeng and Dr Lodewijk A A Brosens, Department of Pathology, University Medical Center Utrecht, Heidelberglaan 100, 3584 CX Utrecht, The Netherlands; wenzelhackeng@gmail.com, l.a.brosens@umcutrecht.nl and Dr Christopher M Heaphy, Department of Medicine; Hematology and Medical Oncology, Boston University, School of Medicine, Boston, MA, USA; heaphyc@bu.edu

WMH, LAAB, CMH and ADS contributed equally.

Received 21 July 2020
Revised 16 February 2021
Accepted 11 March 2021



© Author(s) (or their employer(s)) 2021. Re-use permitted under CC BY-NC. No commercial re-use. See rights and permissions. Published by BMJ.

To cite: Hackeng WM, Brosens LAA, Kim JY, et al. *Gut* Epub ahead of print: [please include Day Month Year]. doi:10.1136/gutjnl-2020-322595

ABSTRACT

Objective Recent studies have found aristaless-related homeobox gene (ARX)/pancreatic and duodenal homeobox 1 (PDX1), alpha-thalassemia/mental retardation X-linked (ATRX)/death domain-associated protein (DAXX) and alternative lengthening of telomeres (ALT) to be promising prognostic biomarkers for non-functional pancreatic neuroendocrine tumours (NF-PanNETs). However, they have not been comprehensively evaluated, especially among small NF-PanNETs (≤ 2.0 cm). Moreover, their status in neuroendocrine tumours (NETs) from other sites remains unknown.

Design An international cohort of 1322 NETs was evaluated by immunolabelling for ARX/PDX1 and ATRX/DAXX, and telomere-specific fluorescence in situ hybridisation for ALT. This cohort included 561 primary NF-PanNETs, 107 NF-PanNET metastases and 654 primary, non-pancreatic non-functional NETs and NET metastases. The results were correlated with numerous clinicopathological features including relapse-free survival (RFS).

Results ATRX/DAXX loss and ALT were associated with several adverse prognostic findings and distant metastasis/recurrence ($p < 0.001$). The 5-year RFS rates for patients with ATRX/DAXX-negative and ALT-positive NF-PanNETs were 40% and 42% as compared with 85% and 86% for wild-type NF-PanNETs ($p < 0.001$ and $p < 0.001$). Shorter 5-year RFS rates for ≤ 2.0 cm NF-PanNETs patients were also seen with ATRX/DAXX loss (65% vs 92%, $p = 0.003$) and ALT (60% vs 93%,

$p < 0.001$). By multivariate analysis, ATRX/DAXX and ALT status were independent prognostic factors for RFS. Conversely, classifying NF-PanNETs by ARX/PDX1 expression did not independently correlate with RFS. Except for 4% of pulmonary carcinoids, ATRX/DAXX loss and ALT were only identified in primary (25% and 29%) and NF-PanNET metastases (62% and 71%).
Conclusions ATRX/DAXX and ALT should be considered in the prognostic evaluation of NF-PanNETs including ≤ 2.0 cm tumours, and are highly specific for pancreatic origin among NET metastases of unknown primary.

INTRODUCTION

Pancreatic neuroendocrine tumours (PanNETs) are the second most common malignancy of the pancreas and comprise a heterogeneous group of neoplasms. Historically, the incidence of PanNETs has been low, and patients often presented with hormonal hypersecretion (functional PanNETs). However, with increasing use of abdominal imaging, the incidence of PanNETs, especially non-functional PanNETs (NF-PanNETs), has risen rapidly.¹ The 5-year survival of patients with NF-PanNETs is reported to be as low as 54% and is highly dependent on the presence of distant metastases.² Patients with localised disease have a reported 5-year survival of 93% as compared with 27% for patients with metastatic disease. Many patients develop infiltrative and widely metastatic neoplasms, while others may

Significance of this study

What is already known on this subject?

- ▶ The frequent detection of non-functional pancreatic neuroendocrine tumours (NF-PanNETs), especially those measuring ≤ 2.0 cm, represents a treatment dilemma.
- ▶ While most NF-PanNETs are clinically indolent, a subset may behave aggressively and metastasise widely.
- ▶ Advancements in molecular techniques have identified several prognostic biomarkers for PanNETs and include the status of aristaless-related homeobox gene (ARX), pancreatic and duodenal homeobox 1 (PDX1), alpha-thalassemia/mental retardation X-linked (ATRX), death domain-associated protein (DAXX) and alternative lengthening of telomeres (ALT).
- ▶ The evaluation of these putative biomarkers has largely been restricted to single-centre studies, limited in study cohort size and assessed in diverse patient populations, such as those with functional PanNETs, synchronous distant metastases and germline predisposition syndromes.
- ▶ The prognostic utility of ARX, PDX1, ATRX, DAXX and ALT in small NF-PanNETs (≤ 2.0 cm) and their status in neuroendocrine tumours (NETs) from other sites are unknown.

What are the new findings?

- ▶ Within a multi-institutional, international cohort of NF-PanNETs, loss of ATRX/DAXX and the presence of ALT correlated with several adverse prognostic pathological features and distant metastases/recurrence on follow-up.
- ▶ Relapse-free survival (RFS) rates were shorter for patients, and, in particular, for those patients with small NF-PanNETs (≤ 2.0 cm) with ATRX/DAXX loss and/or ALT positivity.
- ▶ The status of ATRX/DAXX and ALT were independent, negative prognostic biomarkers for NF-PanNETs.
- ▶ Classifying NF-PanNETs by ARX/PDX1 expression did not independently correlate with RFS.
- ▶ In addition to primary NF-PanNETs and NF-PanNET metastases, only a small subset of pulmonary carcinoids exhibited ATRX/DAXX loss and ALT.

How might it impact on clinical practice in the foreseeable future?

- ▶ Incorporating the status of ATRX/DAXX by immunohistochemistry and ALT by telomere-specific fluorescence in situ hybridisation as prognostic biomarkers for NF-PanNETs is clinically feasible and inexpensive.
- ▶ In the setting of an NET metastasis of unknown origin, ATRX/DAXX and ALT are highly specific diagnostic biomarkers to indicate the possibility of a pancreatic primary.

present with slow growing, indolent tumours. In fact, in recent years, the overtreatment of NF-PanNETs has been a subject of debate and an observational approach may be warranted for a subset of patients.^{3,4}

Routinely used prognostic biomarkers for NF-PanNETs are tumour size, grade and stage. Current recommendations by the National Comprehensive Cancer Network, European Neuroendocrine Tumor Society and North American Neuroendocrine Tumor Society are to surgically resect NF-PanNETs > 2.0 cm in size with negative margins and regional lymphadenectomy due to their association with metastatic spread.⁵⁻⁷ A limited surgical procedure, or even surveillance, can be considered in NF-PanNETs ≤ 2.0 cm as these neoplasms often do not metastasise.

Nevertheless, NF-PanNETs ≤ 2.0 cm can be aggressive, including those initially classified as clinically indolent.⁸⁻¹¹ In addition to tumour size, WHO advocates grading of NF-PanNETs based on proliferative activity that includes mitotic index and Ki-67 immunohistochemistry.¹² Many studies suggest tumours of at least WHO grade 2 are associated with a worse clinical behaviour.¹³ However, both mitotic index and Ki-67 measurements are susceptible to sampling issues, interpretation errors, and may not truly reflect the clinical behaviour of these neoplasms as WHO grade 1 tumours can also develop distant metastases.^{14,15} Thus, additional biomarkers are needed to improve the prognostic classification and management of patients.

Advancements in molecular technologies have identified several putative prognostic biomarkers for NF-PanNETs. Whole exome and whole-genome sequencing studies have found recurrent alterations in alpha-thalassemia/mental retardation X-linked chromatin remodeler (*ATRX*) and death domain-associated protein (*DAXX*) that are associated with metastatic disease.¹⁶⁻²⁰ Mutations in these genes often result in loss of nuclear expression of their respective proteins by immunohistochemistry. Furthermore, *ATRX/DAXX* loss frequently coincides with the presence of alternative lengthening of telomeres (ALT), a telomerase-independent telomere maintenance mechanism, which can reliably be assayed using telomere-specific fluorescence in situ hybridisation (FISH).²¹ Loss of *ATRX/DAXX* and the presence of ALT correlate with a shorter relapse-free survival (RFS).²²⁻²⁴ Additionally, whole transcriptome and epigenome studies have found the differential expression of the transcription factors, aristaless-related homeobox gene (*ARX*) and pancreatic and duodenal homeobox 1 (*PDX1*), can also determine the risk of metastatic disease.^{25,26} *PDX1* expression is typically associated with an indolent clinical behaviour, while the expression of *ARX* or the lack of both proteins correlates with an aggressive disease course. The status of these transcription factors in PanNETs was recently reported to be a prognostic biomarker for RFS and independent of tumour size, WHO grade and ALT.²⁶

However, the prognostic significance of *ARX* and *PDX1* in NF-PanNETs was assessed in a study cohort limited in number and enriched towards patients with germline predisposition syndromes.²⁶ In contrast, loss of *ATRX/DAXX* and the presence of ALT in NF-PanNETs have been evaluated by multiple investigators, but their clinical utility among patients with NF-PanNETs of ≤ 2.0 cm has not been comprehensively analysed. Moreover, the status of *ARX*, *PDX1*, *ATRX/DAXX* and ALT in NF-PanNET metastases and neuroendocrine tumours (NETs) from other organ sites remains largely unexplored and may be of clinical and prognostic relevance within these neoplasms. In fact, in addition to the pancreas, the expression of *ARX* and *PDX1* are key factors for endocrine progenitor cells of other organ sites.²⁷ Therefore, the objectives of this study were to (1) determine the correlation of *ARX* and *PDX1* expression with clinicopathological features in a large, international, multi-institutional cohort of sporadic NF-PanNETs without distant metastatic disease at presentation, (2) validate the prognostic significance of these transcription factors, *ATRX/DAXX*, and ALT in NF-PanNETs and include a separate analysis among tumours of ≤ 2.0 cm and (3) comprehensively evaluate the status of all five biomarkers in NF-PanNETs metastases and NETs from other organ sites.

MATERIALS AND METHODS**Study design and case selection**

The study design is summarised in figure 1 and includes the overall patient cohort, biomarker staining and expected results,

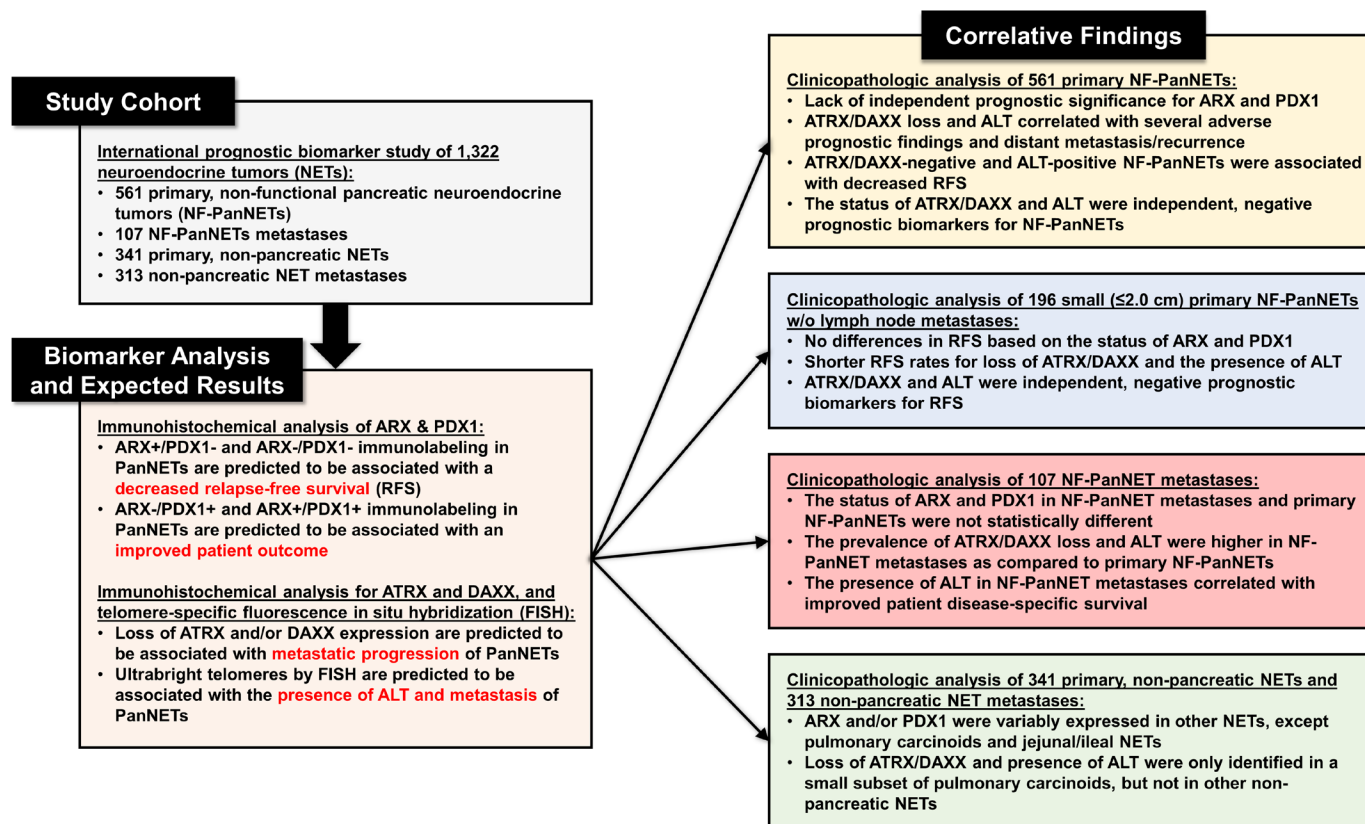


Figure 1 A summary of the study design to include details of individual patient cohorts, biomarker staining with expected results and correlative clinicopathological findings on individual biomarker analysis. ALT, alternative lengthening of telomeres; ARX, aristaless-related homeobox gene; ATRX, alpha-thalassemia/mental retardation X-linked; DAXX, death domain-associated protein; PDX1, pancreatic and duodenal homeobox 1.

and correlative clinicopathological findings. The surgical pathology archives from Amsterdam University Medical Center (UMC), UMC Utrecht, ARC-Net Research Center, Asan Medical Center, Barnes-Jewish Hospital and University of Pittsburgh Medical Center (UPMC) were queried for neuroendocrine neoplasms of the pancreas between 1991 and 2017 that underwent enucleation, central pancreatectomy, pancreaticoduodenectomy or distal pancreatectomy. Cases were cross-referenced with clinical and follow-up data obtained from patient paper and/or electronic medical records. The study inclusion criteria consisted of the following: a solitary, clinically non-functional, well-differentiated NET (confirmed with positive immunolabelling for neuroendocrine markers: synaptophysin and/or chromogranin A) centred within the pancreas; absence of a confirmed or suspected genetic syndrome associated with pancreatic neuroendocrine neoplasms: multiple endocrine neoplasia type 1 (MEN1) syndrome, von Hippel-Lindau syndrome, neurofibromatosis type 1 syndrome, familial atypical multiple mole melanoma syndrome and tuberous sclerosis complex syndrome; surveillance and survival data; and cases with sufficient material for ancillary studies. Patients with a confirmed or suspected genetic syndrome associated with PanNETs were excluded considering these patients may develop multiple primary PanNETs, and, within these scenarios, sampling of each primary from the same patient is impractical for prognostication purposes. It is important to underscore that exclusion of patients was based on both clinical and germline data; however, formal germline testing for all patients included within this study was not performed.

In total, 561 patients with a resected NF-PanNET fulfilled the aforementioned criteria and consisted of the following: 28 patients from Amsterdam UMC, 27 patients from UMC Utrecht,

and 82 patients from ARC-Net Research Center (online supplemental table S1), 168 patients from Asan Medical Center (online supplemental table S2) and 79 patients from Barnes-Jewish Hospital and 177 patients from UPMC (online supplemental table S3). Within the same timeframe, the surgical pathology archives at Barnes-Jewish Hospital and UPMC were also queried to identify NF-PanNET distant organ metastases and yielded 107 patients with sufficient pathological material available of their metastatic specimen for ancillary studies. Further, NETs from other organ sites to include primaries (n=341) and distant organ metastases (n=313) were identified within the UPMC surgical pathology archives for subsequent analysis. Archival pathological material from all 1322 neoplasms was used to create high-density tissue microarrays (TMAs) as previously described.^{18 23 24 28 29} While the TMAs were used for telomere-specific FISH, whole tumour sections for 256 primary NF-PanNETs, 63 NF-PanNET metastases and 132 primary, non-pancreatic NETs and 62 non-pancreatic NET metastases were evaluated immunohistochemically for ARX, PDX1, ATRX and DAXX.

Clinical and demographic data were reviewed for each case. Corresponding pathology gross reports and H&E stained slides were also reviewed for the following pathological features: tumour size, location, lymphovascular invasion, perineural invasion, extension outside of the pancreas and regional lymph node metastasis. Each primary NF-PanNET was graded using the 2017/2019 WHO classification system for pancreatic neuroendocrine neoplasms on the basis of mitotic rate and Ki-67 immunohistochemistry as Grade 1 (G1), <2 mitoses/2 mm² and Ki-67 of <3%; Grade 2 (G2), 2 to 20 mitoses/2 mm² or Ki-67 of 3%–20%; or grade 3 (G3), >20 mitoses/2 mm² or Ki-67 of >20%.^{12 30} For cases with discordant mitotic rate and

Ki-67 measurements, the highest grade was assigned. Pathological primary tumour classification was determined according to the eighth edition of the American Joint Committee on Cancer Staging Manual, which is based on tumour size and extent of invasion.³¹ Follow-up information was extracted from the patient's medical records to include data on surveillance, RFS, and disease-specific survival (DSS). Pancreatic and non-pancreatic neuroendocrine carcinomas were excluded from this study.

Immunohistochemistry

TMA or whole section tumour slides were deparaffinised with serial xylene treatments and subjected to antigen retrieval using heated citrate solution. Immunolabelling for ARX (MABN102 mouse monoclonal, Millipore), PDX1 (AB134150 rabbit monoclonal, Abcam), ATRX (HPA001906 rabbit polyclonal, Sigma Aldrich) and DAXX (HPA008736 rabbit polyclonal, Sigma Aldrich or AB32140 rabbit monoclonal, Abcam) were performed either on an automated Ventana Benchmark XT system using the biotin-free Ventana OptiView DAB IHC Detection Kit (Ventana Medical Systems) or manually (online supplemental materials and methods).

Assessment of ARX, PDX1, ATRX and DAXX was done blinded to any patient data including outcome. For ARX and PDX1, 'positive' expression was defined as nuclear staining of >10% of neoplastic cells as previously described.^{28 32} Tumour tissue with ≤10% of nuclear expression was scored as 'negative' expression. Surrounding islets within the uninvolved pancreas were used as a positive internal control. Immunolabelling for ATRX and DAXX was considered 'positive' or preserved if >5% of neoplastic cells had nuclear staining, as previously described.^{22 23} Neoplasms were scored as 'negative' or loss of staining for ATRX or DAXX if the pattern was that of cytoplasmic accumulation with nuclear clearing, as long as adequate internal controls (eg, nuclear labelling of adjacent endothelial cells, lymphocytes and/or islets of Langerhans) were present. Intratumoural heterogeneity or heterogeneous staining of ATRX and DAXX was defined as the clear presence of two distinct populations of tumour cells demonstrating preserved and loss of nuclear staining.²⁴ For subsequent statistical analysis, cases with heterogeneous staining were scored as loss or negative staining.

Fluorescence in situ hybridisation

Telomere-specific FISH was performed as previously described using a fluorescently tagged telomeric-C PNA probe for each TMA (online supplemental materials and methods).³³ Scoring for ALT was performed by assessing at least 250 nuclei from all for each case. Using previously described criteria, ALT-positive cases were defined by the presence of large, ultrabright intranuclear foci consistent with telomere FISH signals in at least 1% of tumour nuclei and the total signal intensity for individual foci >10 fold than telomere signals from stromal cells.^{23 24} Importantly, areas of necrosis were excluded from evaluation.

Statistical analysis

χ^2 analysis or Fisher's exact tests were used to compare categorical data, and Mann-Whitney U test was used to compare continuous variables. Survival curves were constructed using the Kaplan-Meier method and differences between groups were evaluated by the log-rank test. RFS was calculated from the date of surgery to the date of first distant metastasis/local recurrence after surgery and censored at the date of last follow-up or death. The prognostic significance of clinical and pathological

characteristics was determined using univariate Cox regression analysis. Multivariate analyses of significant risk factors by univariate analysis were performed using Cox proportional hazard regression to identify independent risk factors for RFS. DSS for patients with NF-PanNETs metastases was calculated from the date of primary diagnosis and date of metastatic diagnosis to the date of death due to disease or date of last follow-up (if death did not occur). All statistical analyses were performed using the SPSS Statistical software, V.25 (IBM) and statistical significance was defined as a $p < 0.05$. The Cox proportional hazard assumptions were inspected for each covariate and graphed using scaled Schoenfeld residuals. For each covariate, and each model as a whole, none of the Cox proportional hazard assumptions were violated. These analyses were performed with the survival and survminer packages for R V.4.0.2.

RESULTS

The clinicopathological features of ARX, PDX1, ATRX/DAXX and ALT in NF-PanNETs

Among an international, multi-institutional cohort of 561 non-syndromic and NF-PanNETs without distant metastases at surgical resection, nuclear expression for ARX and PDX1 was identified in 406 (72%) and 239 (43%) cases (figure 2), respectively, and summarised in online supplemental table S1 and online supplemental data. Expression of both proteins was present in 126 (22%) NF-PanNETs and absent in 42 (8%) NF-PanNETs. In comparison to ARX-negative NF-PanNETs, ARX expression correlated with larger tumour size, pancreatic body/tail location, high WHO grade, negative regional lymph node involvement, loss of ATRX/DAXX immunolabelling and ALT ($p < 0.050$ for all). PDX1-positive NF-PanNETs were more frequently found in female patients and associated with pancreatic head/uncinate/neck location, preserved immunolabelling for ATRX/DAXX, and an absence of ALT ($p < 0.050$ for all).

Based on ARX and PDX1 status, the NF-PanNET study cohort was subdivided into the following four immunophenotypic groups: 280 (50%) ARX-positive/PDX1-negative, 113 (20%) ARX-negative/PDX1-positive, 126 (22%) ARX-positive/PDX1-positive ('double positive', DP), and 42 (8%) ARX-negative/PDX1-negative ('double negative', DN) cases (online supplemental table S4). Further, in accordance with Cejas *et al.*,²⁶ NF-PanNETs classified as ARX-positive/PDX1-negative, and 'DN' were combined into a single group (ARX⁺+DN, $n = 322$ (57%)) and summarised in online supplemental table S5. Likewise, ARX-negative/PDX1-positive, and 'double positive' NF-PanNETs were categorised together (PDX1⁺+DP, $n = 239$ (43%)). In relation to PDX1⁺+DP NF-PanNETs, ARX⁺+DN NF-PanNETs were more likely to occur in male patients, show pancreatic body/tail location, have loss of ATRX/DAXX immunolabelling and exhibit ALT ($p < 0.050$ for all).

The presence of ALT and ATRX/DAXX loss in NF-PanNETs was identified in 160 (29%) and 142 (25%) cases, respectively (table 1 and online supplemental table S6). Further, among the entire study cohort, ALT positivity and/or loss of ATRX/DAXX were detected in 170 (30%) NF-PanNETs. ALT-positive NF-PanNETs, as compared with ALT-negative NF-PanNETs, were associated with a male predilection, and loss of ATRX/DAXX immunolabelling ($p < 0.001$ for all). In addition, ALT-positive NF-PanNETs exhibited larger tumour size, high WHO grade, lymphovascular invasion, perineural invasion, advanced pathological T-stage, regional lymph node metastases, and metachronous (postoperative) distant metastases/recurrences

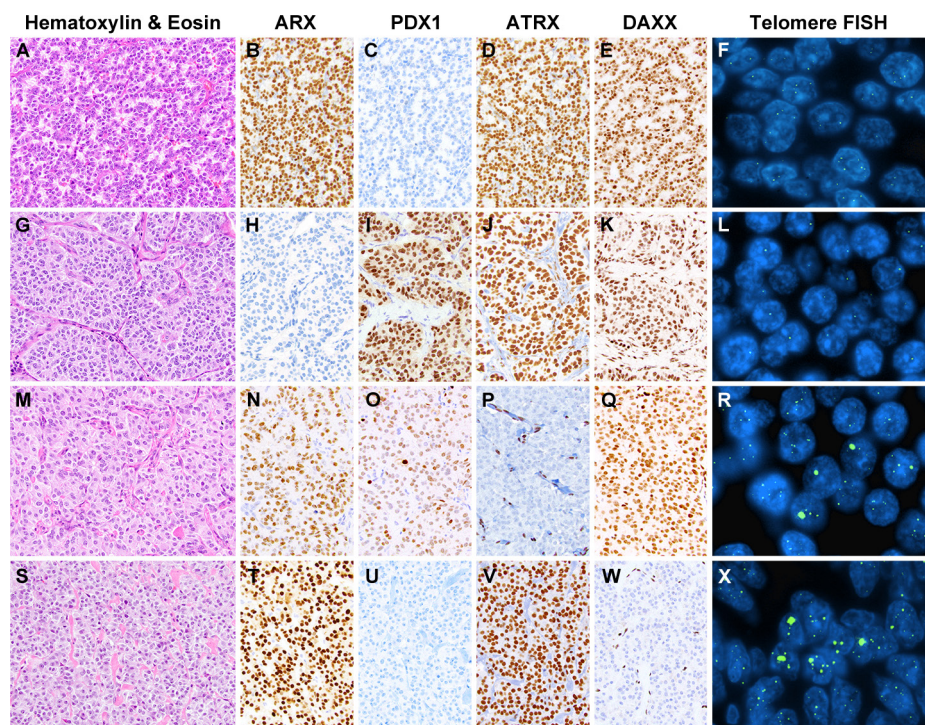


Figure 2 Representative examples of non-functional pancreatic neuroendocrine tumours (NF-PanNETs) that have been assessed by immunolabelling for ARX, PDX1, ATRX and DAXX, and telomere-specific fluorescence in situ hybridisation (FISH) for ALT. (A) NF-PanNET with positive expression for ARX (B) and negative expression for PDX1 (C), while both ATRX (D) and DAXX (E) exhibited preserved nuclear expression and an absence of alternative lengthening of telomeres (ALT) (F). (G) NF-PanNET with negative expression for ARX (H) and positive expression for PDX1 (I), while both ATRX (J) and DAXX (K) had preserved expression and an absence of ALT (L). (M) NF-PanNET with expression for both ARX (N) and PDX1 (O), but loss of nuclear ATRX (P) and preserved nuclear expression for DAXX (Q). The loss of ATRX expression correlated with the presence of large, ultrabright intranuclear foci by telomere-specific FISH, consistent with ALT (R). (S) NF-PanNET with positive ARX expression (T), negative PDX1 expression (U), preserved ATRX expression (V) and loss of DAXX expression (W). Similar to loss of ATRX, DAXX-negative NF-PanNETs were associated with large, ultrabright telomere signals, consistent with ALT (X). ARX, aristaless-related homeobox gene; ATRX, alpha-thalassemia/mental retardation X-linked; DAXX, death domain-associated protein; PDX1, pancreatic and duodenal homeobox 1.

($p < 0.001$ for all). Similar associations were seen with ATRX/DAXX loss (online supplemental table S5) and the combination of ALT positivity and/or loss of ATRX/DAXX.

The prognostic significance of ARX, PDX1, ATRX/DAXX and ALT in NF-PanNETs

An analysis of RFS revealed no statistically significant differences based on the status of ARX, PDX1 or among the four immunophenotypic groups (figure 3A). Furthermore, no RFS differences were observed between patients with ARX⁺+DN NF-PanNETs and patients with PDX1⁺+DP NF-PanNETs (figure 3B). In contrast, the RFS for patients with ALT-positive NF-PanNETs was significantly shorter than patients with ALT-negative NF-PanNETs (figure 3C). Patient RFS rates associated with ALT-positive NF-PanNETs were 86%, 42% and 21% at 1, 5 and 10 years, respectively, as compared with the ALT-negative NF-PanNETs with 96%, 86% and 78% at 1, 5 and 10 years, respectively ($p < 0.001$). However, the combination of ALT status and the immunophenotypic subgroups, ARX⁺+DN and PDX1⁺+DP, did not demonstrate any additional prognostic relevance over ALT status alone (figure 3D). Of note, a longer RFS was identified among patients with ARX-negative/PDX1-positive NF-PanNETs as compared with the remaining patients ($p = 0.014$); however, there was a lack of additional prognostic significance on accounting for ALT (online supplemental figure S1). Loss of ATRX/DAXX immunolabelling was also

associated with shorter RFS with 1-year, 5-year and 10-year rates of 90%, 40% and 20%, respectively, as compared with 96%, 85% and 78%, respectively, for preserved ATRX/DAXX immunolabelling ($p < 0.001$). The combination of ALT-positive and/or ATRX/DAXX-negative NF-PanNETs correlated with shorter RFS rates of 90%, 42% and 21% at 1, 5 and 10 years, respectively, as compared with ALT-negative and ATRX/DAXX positive NF-PanNETs with 97%, 87% and 80% at 1, 5 and 10 years, respectively ($p < 0.001$).

Results of univariate and multivariate Cox regression analysis for RFS in relation to various clinicopathological features including ARX, PDX1, ATRX/DAXX and ALT status are shown in table 2. By univariate analysis, shorter RFS was associated with tumour size > 2.0 cm, tumour size as a continuous variable, G2-to-G3 WHO grade, lymphovascular invasion, perineural invasion, advanced tumour stage (pT3 and pT4 vs pT1 and pT2), regional lymph node metastasis, loss of ATRX/DAXX immunolabelling and the presence of ALT ($p < 0.001$ for all). Multivariate analysis was used to determine the prognostic significance of ALT for RFS and included tumour size > 2.0 cm, WHO grade, lymphovascular invasion, perineural invasion and regional lymph node metastasis. The presence of ALT was an independent prognostic factor for RFS ($p < 0.001$), and similar results were observed with loss of ATRX/DAXX immunolabelling when substituted for ALT or combined with ALT ($p < 0.001$ for both).

Table 1 Clinical and pathological comparison of ARX, PDX1 and ALT status in 561 non-syndromic, primary NF-PanNETs

Patient or tumour characteristics	Total, n=561	ARX-positive, n=406 (72%)	ARX-negative, n=155 (28%)	P value	PDX1-positive, n=239 (43%)	PDX1-negative, n=322 (57%)	P value	ALT-positive, n=160 (29%)	ALT-negative, n=401 (71%)	P value
Gender										
Female	275 (49%)	191 (47%)	84 (54%)	0.132	131 (55%)	144 (45%)	0.021	59 (37%)	216 (54%)	<0.001
Male	286 (51%)	215 (53%)	71 (46%)		108 (45%)	178 (55%)		101 (63%)	185 (46%)	
Mean age (range), years	56.9 (20–93)	56.5 (23–83)	57.9 (20–93)	0.265	56.2 (20–93)	57.4 (22–85)	0.233	58.2 (26–93)	56.4 (20–85)	0.270
Mean tumour size (range), cm	3.3 (0.6–18.0)	3.4 (0.7–18.0)	2.9 (0.6–10.0)	0.017	3.0 (0.6–18.0)	3.5 (0.7–15.5)	0.063	4.7 (0.7–18.0)	2.7 (0.6–10.0)	<0.001
Location										
Head, neck and undinate	233 (41%)	153 (38%)	80 (52%)	0.006	117 (49%)	116 (36%)	0.002	61 (38%)	172 (43%)	0.490
Body and tail	325 (58%)	250 (61%)	75 (48%)		120 (50%)	205 (64%)		98 (61%)	227 (56%)	
Diffuse	3 (1%)	3 (1%)	0 (0%)		2 (1%)	1 (<1%)		1 (1%)	2 (1%)	
WHO grade										
Low (G1)	362 (65%)	256 (63%)	106 (68%)	0.020	163 (68%)	199 (62%)	0.050	58 (36%)	304 (76%)	<0.001
Intermediate (G2)	189 (33%)	146 (36%)	43 (28%)		75 (31%)	114 (35%)		99 (62%)	90 (22%)	
High (G3)	10 (2%)	4 (1%)	6 (4%)		1 (1%)	9 (3%)		3 (2%)	7 (2%)	
Lymphovascular invasion	n=424	n=299	n=125		n=163	n=261		n=112	n=312	
Absent	282 (67%)	199 (67%)	83 (66%)	1.000	111 (68%)	171 (66%)	0.599	43 (38%)	239 (77%)	<0.001
Present	142 (33%)	100 (33%)	42 (34%)		52 (32%)	90 (34%)		69 (62%)	73 (23%)	
Perineural invasion	n=424	n=299	n=125		n=163	n=261		n=112	n=312	
Absent	341 (80%)	248 (83%)	93 (74%)	0.060	129 (79%)	212 (81%)	0.616	73 (65%)	268 (86%)	<0.001
Present	83 (20%)	51 (17%)	32 (26%)		34 (21%)	49 (19%)		39 (35%)	44 (14%)	
Primary tumour (pT) stage										
T1	179 (32%)	120 (30%)	59 (38%)	0.115	79 (33%)	100 (31%)	0.404	13 (8%)	166 (41%)	<0.001
T2	228 (41%)	168 (41%)	60 (39%)		103 (43%)	125 (39%)		69 (43%)	159 (40%)	
T3	147 (26%)	111 (27%)	36 (23%)		55 (23%)	92 (28%)		71 (44%)	76 (19%)	
T4	7 (1%)	7 (2%)	0 (0%)		2 (1%)	5 (2%)		7 (5%)	0 (0%)	
Regional node (pN) stage	n=502	n=368	n=134		n=213	n=289		n=155	n=347	
N0	362 (72%)	277 (75%)	85 (63%)	0.010	146 (69%)	216 (75%)	0.132	85 (55%)	277 (80%)	<0.001
N1	140 (28%)	91 (25%)	49 (37%)		67 (31%)	73 (25%)		70 (45%)	70 (20%)	
Metachronous metastases/recurrences										
Absent	423 (75%)	298 (70%)	125 (81%)	0.080	189 (79%)	234 (73%)	0.092	71 (44%)	352 (88%)	<0.001
Present	138 (25%)	108 (30%)	30 (19%)		50 (21%)	88 (27%)		89 (56%)	49 (12%)	
ARX expression										
Negative	155 (28%)				113 (47%)	42 (13%)	<0.001	18 (11%)	137 (34%)	<0.001
Positive	406 (72%)				126 (53%)	280 (87%)		142 (89%)	264 (66%)	
PDX1 expression										
Negative	322 (57%)	280 (69%)	42 (27%)	<0.001						<0.001
Positive	239 (43%)	126 (31%)	113 (73%)							
ATRX/DAXX expression										
Preserved	419 (75%)	283 (70%)	136 (88%)	<0.001	197 (82%)	222 (69%)	<0.001	28 (18%)	391 (98%)	<0.001
Loss	142 (25%)	123 (30%)	19 (12%)		42 (18%)	100 (31%)		132 (82%)	10 (2%)	

Continued

Table 1 Continued

Patient or tumour characteristics	Total, n=561	ARX-positive, n=406 (72%)	ARX-negative, n=155 (28%)	PDX1-positive, n=239 (43%)	PDX1-negative, n=322 (57%)	P value	ALT-positive, n=160 (29%)	ALT-negative, n=401 (71%)	P value
ALT status									
Negative	401 (71%)	264 (65%)	137 (88%)	194 (81%)	207 (64%)	<0.001			<0.001
Positive	160 (29%)	142 (89%)	18 (12%)	45 (19%)	115 (36%)				

ALT, alternative lengthening of telomeres; ARX, aristal-less-related homeobox; ATRX, alpha-thalassaemia/mental retardation X-linked; DAXX, death domain-associated protein; NF-PanNET, non-functional pancreatic neuroendocrine tumour; PDX1, pancreatic and duodenal homeobox 1.

Prognostic biomarkers for NF-PanNETs ≤ 2.0 cm and without regional lymph node metastases

Considering the difficulties in predicting the clinical behaviour of NF-PanNETs ≤ 2.0 cm and without regional lymph node metastases, a separate subanalysis was performed for 196 patients with small (≤ 2.0 cm) NF-PanNETs (online supplemental table S7). No statistically significant differences in RFS were identified based on the status of ARX, PDX1, four immunophenotypic groups, ARX⁺+DN and PDX1⁺+DP and WHO grade (figure 4A). Shorter RFS rates were seen with loss of ATRX/DAXX immunolabelling and the presence of ALT. The 1-year, 5-year and 10-year RFS rates were 92%, 65% and 32%, respectively, for patients with loss of ATRX/DAXX as compared with 97%, 92% and 85%, respectively, for patients with preserved ATRX/DAXX ($p=0.003$). Similarly, 1-year, 5-year and 10-year RFS rates for patients with ALT-positive NF-PanNETs were 94%, 60% and 40%, respectively, as compared with 97%, 93% and 86%, respectively, for patients with ALT-negative NF-PanNETs ($p<0.001$) (figure 4B).

By univariate Cox regression analysis of cases ≤ 2.0 cm, tumour size as a continuous variable, loss of ATRX/DAXX immunolabelling, and the presence of ALT ($p<0.050$ for all) were the only tumour characteristics associated with shorter RFS. Moreover, within a multivariate model that included tumour size and ALT status, the presence of ALT was an independent prognostic factor for RFS ($p=0.009$) and interchangeable with loss of ATRX/DAXX immunolabelling ($p=0.042$). Recursive partitioning for tumour size was attempted to determine an optimal prognostic threshold within this subgroup and yielded an optimal ≤ 1.6 cm cut-off ($p=0.017$) (online supplemental table S8). The 1-year, 5-year and 10-year RFS rates for patients with NF-PanNETs of ≤ 1.6 cm were 98%, 92% and 92%, respectively, as compared with 95%, 85% and 61%, respectively, for patients with NF-PanNETs of > 1.6 cm. However, by multivariate analysis, the presence of ALT ($p=0.011$) and the loss of ATRX/DAXX immunolabelling ($p=0.044$) were independent prognostic factors, but tumour size of ≤ 1.6 cm was not significant in either multivariate model.

The status of ARX, PDX1, ATRX/DAXX and ALT in NF-PanNET metastases, other primary NETs and NET metastases

Within a separate cohort of 107 NF-PanNET metastases from various distant sites, nuclear expression for ARX and PDX1 expression was identified in 85 (79%) and 36 (34%) cases, respectively (table 3 and online supplemental data). In comparison to 561 primary NF-PanNETs, the status of ARX and PDX1 in NF-PanNET metastases was not statistically different. Conversely, the presence of ALT was detected in a higher proportion of NF-PanNET metastases ($n=76$, 71%) as compared with primary NF-PanNETs ($n=160$, 29%, $p<0.001$). A similar correlation was found for ATRX/DAXX loss among 66 (62%) NF-PanNET metastases and 142 (25%) primary NF-PanNETs ($p<0.001$).

A clinicopathological analysis of NF-PanNET metastases revealed an association between ALT-positive NF-PanNET metastases and male gender, primary pancreatic body/tail location, positive ARX expression, negative PDX1 expression, loss of ATRX/DAXX expression and more likely to present as metachronous vs synchronous disease ($p<0.05$) (online supplemental table S9). However, 5-year and 10-year DSS rates were longer for patients with ALT-positive NF-PanNET metastases with respect to the time after primary diagnosis (72% and 45% vs 51% and 24%, respective, $p=0.027$) and time after diagnosis of metastatic

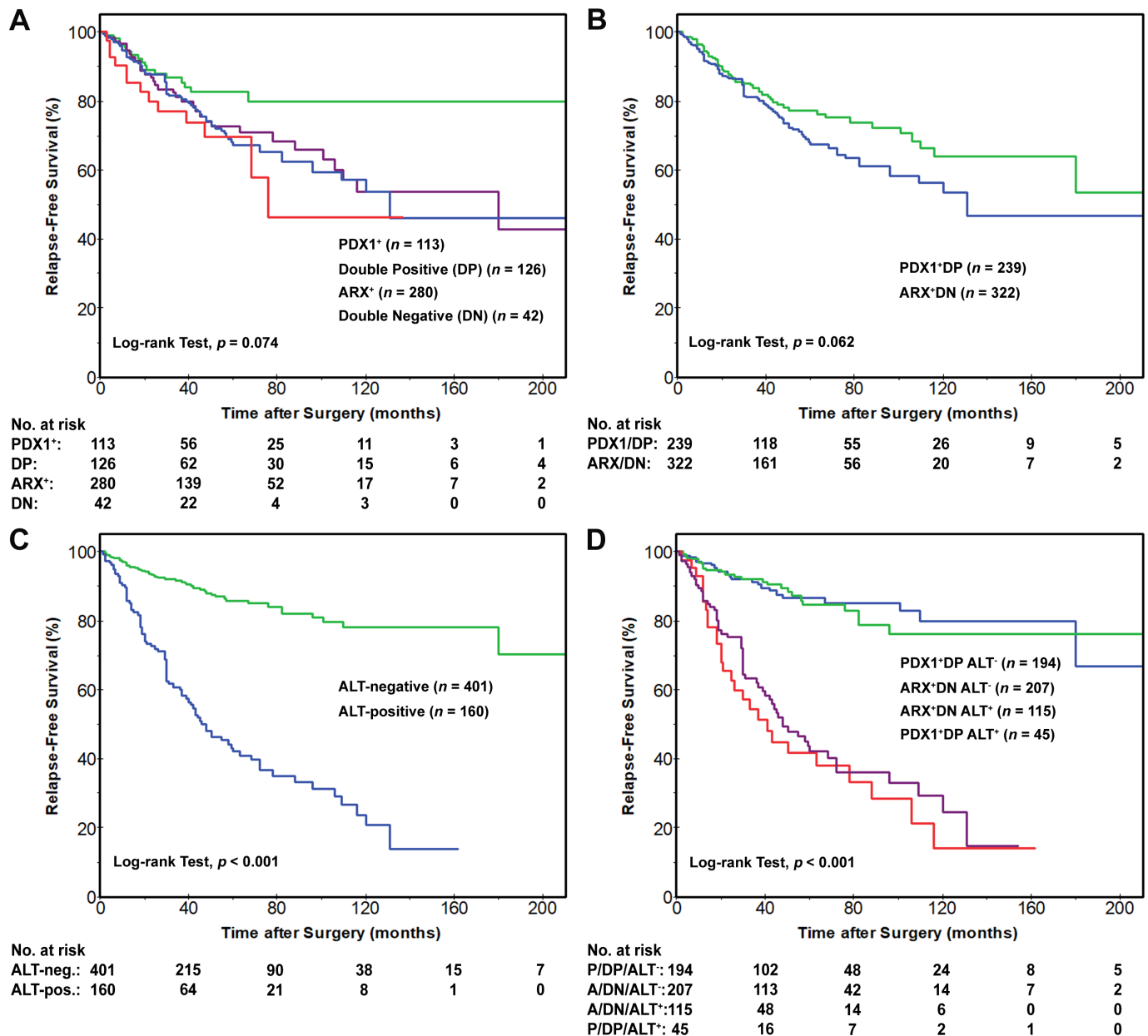


Figure 3 Kaplan-Meier curves comparing relapse-free survival (RFS) after surgical resection for patients with NF-PanNETs. (A) No statistically significant differences in RFS were identified between patients with NF-PanNETs ($n=561$) that were classified into four immunophenotypic groups: ARX-positive/PDX1-negative (ARX⁺), ARX-negative/PDX1-positive (PDX⁺), ARX-positive/PDX1-positive (DP) and ARX-negative/PDX1-negative (DN). (B) Similarly, no RFS difference was seen between patients with ARX⁺+DN NF-PanNETs and patients with PDX1⁺+DP NF-PanNETs, however (C) the RFS for patients with ALT-positive NF-PanNETs was significantly shorter than patients with ALT-negative NF-PanNETs. In addition, (D) the combination of ALT status and the immunophenotypic subgroups, ARX⁺+DN and PDX1⁺+DP, did not demonstrate any prognostic benefit over ALT status alone. ALT, alternative lengthening of telomeres; ARX, aristaless-related homeobox gene; NF-PanNETs, non-functional pancreatic neuroendocrine tumours; PDX1, pancreatic and duodenal homeobox 1.

disease (61% and 38% vs 38% and 17%, respectively, $p=0.043$) (online supplemental figure S2). A similar statistical association between ATRX/DAXX loss and DSS was not observed.

In addition to primary NF-PanNETs and NF-PanNET metastases, a cohort of 341 primary, non-pancreatic NETs and 313 NET metastases were evaluated for ARX and PDX1 (table 3 and online supplemental data). Except for lung, jejunal, ileal and gallbladder NETs, both ARX and PDX1 were expressed in NETs from multiple organ sites (online supplemental figure S3) but their status did not demonstrate clinicopathological nor prognostic significance (online supplemental table S10). In contrast,

ALT was detected in only 2 (of 48, 4%) non-metastatic carcinoids of the lung and both cases exhibited ATRX loss by immunohistochemistry (online supplemental figure S4). Considering the small number of lung carcinoids that were ALT-positive and showed loss of ATRX, a prognostic analysis could not be performed. None of the remaining primary, non-pancreatic NETs nor NET metastases exhibited ALT or loss of ATRX/DAXX immunolabelling.

DISCUSSION

Improvements and advancements in pathological assessment, biochemical analysis and molecular techniques have led to the

Table 2 Univariate and multivariate Cox regression analyses for relapse-free survival among 561 primary NF-PanNETs and 196 primary NF-PanNETs of ≤ 2.0 cm and without lymph node metastases

Patient or tumour characteristics	Entire NF-PanNET cohort						
	NF-PanNETs ≤ 2.0 cm without lymph node metastases			NF-PanNETs ≤ 2.0 cm with lymph node metastases			
	Univariate Cox regression analysis	Multivariate Cox regression analysis	Univariate Cox regression analysis	Multivariate Cox regression analysis	Univariate Cox regression analysis	Multivariate Cox regression analysis	
Relapse-free survival HR (95% CI)	P value	Relapse-free survival HR (95% CI)	P value	Relapse-free survival HR (95% CI)	P value	Relapse-free survival HR (95% CI)	P value
Gender, female versus male (ref.)	1.354 (0.964 to 1.900)	0.080	1.501 (0.559 to 4.028)	0.420	1.501 (0.559 to 4.028)	0.420	
Age, years*	1.013 (0.999 to 1.027)	0.067	1.034 (0.992 to 1.078)	0.113	1.034 (0.992 to 1.078)	0.113	
Tumour size, > 2.0 cm vs ≤ 2.0 cm (ref.)	3.036 (1.954 to 4.719)	< 0.001	2.214 (1.114 to 4.399)	0.023	4.352 (1.15 to 16.454)	0.030	2.251 (0.556 to 9.107)
Tumour size*	1.198 (1.142 to 1.257)	< 0.001					
Location, head, neck and uncinate vs body and tail/diffuse (ref.)	1.219 (0.873 to 1.704)	0.245	1.492 (0.901 to 2.471)	0.120	2.244 (0.884 to 5.695)	0.089	
WHO grade, G2 or G3 vs G1 (ref.)	3.282 (2.335 to 4.612)	< 0.001	1.057 (0.615 to 1.815)	0.841	1.854 (0.596 to 5.772)	0.286	
Lymphovascular invasion, presence vs absence (ref.) [†]	3.562 (2.311 to 5.491)	< 0.001	1.158 (0.689 to 1.946)	0.580			
Perineural invasion, presence vs absence (ref.) [†]	3.042 (1.971 to 4.695)	< 0.001					
Tumour stage (pT), pT3 and pT4 vs pT1 and pT2 (ref.)	2.825 (2.020 to 3.951)	< 0.001					
Lymph node metastasis (pN), pN1 vs pN0 (ref.) [‡]	4.041 (2.853 to 5.721)	< 0.001	2.150 (1.276 to 3.621)	0.004			
ARX expression, positive vs negative (ref.)	1.381 (0.921 to 2.071)	0.118	2.584 (0.748 to 8.931)	0.133			
PDX1 expression, positive vs negative (ref.)	0.720 (0.508 to 1.019)	0.064	0.880 (0.346 to 2.239)	0.788			
Immunophenotype, ARX1 ⁺ + DN vs. PDX1 ⁺ + DP (ref.)	1.390 (0.981 to 1.968)	0.064	1.137 (0.447 to 2.893)	0.788			
ATRX/DAXX expression, loss versus preserved (ref.)	1.144 (3.647 to 7.257)	> 0.001	4.199 (1.490 to 11.830)	0.007			
ALT, positive versus negative (ref.)	5.650 (3.964 to 8.055)	> 0.001	3.514 (2.152 to 5.739)	> 0.001	4.629 (2.171 to 11.411)	> 0.001	4.155 (1.428 to 12.087)

*The patient or tumour characteristic of interest was evaluated as a continuous variable.

[†]Cox regression analysis is based on data available for 424 of 561 (76%) patients.

[‡]Cox regression analysis is based on data available for 502 of 561 (90%) patients.

ALT, alternative lengthening of telomeres; ARX, aristal-less-related homeobox; ATRX, alpha-thalassaemia/mental retardation X-linked; DAXX, death domain-associated protein; DN, double negative for ARX and PDX1; DP, double positive for ARX and PDX1; NF-PanNET, non-functional pancreatic neuroendocrine tumour; PDX1, pancreatic and duodenal homeobox 1; ref, reference.

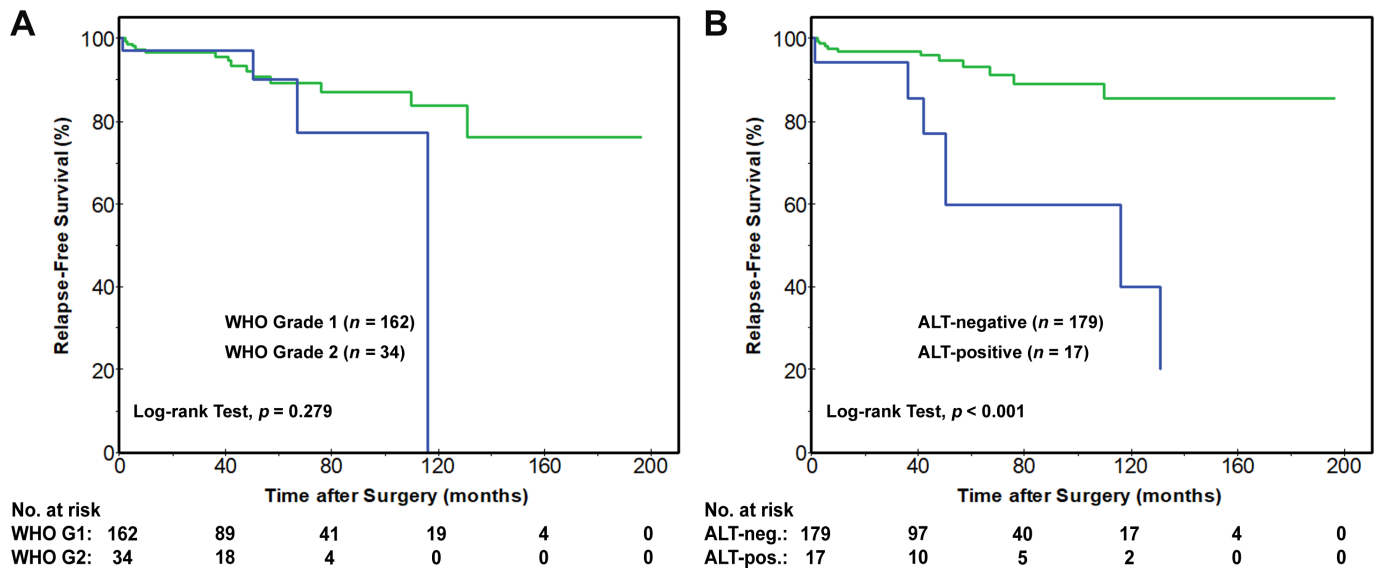


Figure 4 Kaplan-Meier curves for RFS among patients with NF-PanNETs of ≤ 2.0 cm and without regional lymph node metastases ($n=196$). Based on the 2017/2019 WHO grading system for NF-PanNETs, (A) no statistically significant difference in RFS was identified; however (B) the presence of ALT was associated with shorter RFS. ALT, alternative lengthening of telomeres; NF-PanNETs, non-functional pancreatic neuroendocrine tumours; RFS, relapse-free survival.

investigation of multiple biomarkers to determine prognosis and guide treatment for NF-PanNETs.^{11 13 19 34–36} While some biomarkers, such as mitotic count and Ki-67 proliferation index, have been incorporated into the routine evaluation of NF-PanNETs, most are not used in clinical practice as they have been inadequately studied in patient specimens as to demonstrate their prognostic value. Using a large, international, multi-institutional cohort of NF-PanNETs from patients without a germline predisposition syndrome or distant metastases at clinical presentation, we validated the utility of ATRX/DAXX by immunolabelling

and ALT by telomere-specific FISH as prognostic biomarkers. Loss of ATRX/DAXX and the presence of ALT correlated with known adverse prognostic features for NF-PanNETs, such as large tumour size, high WHO grade, lymphovascular invasion, perineural invasion, advanced pathological T-stage, and regional lymph node metastases. Importantly, ATRX/DAXX loss and ALT were independent prognostic biomarkers for shorter RFS among patients with NF-PanNETs.

While DNA repair and recombination have been implicated in ALT, the exact mechanisms underlying this telomere

Table 3 Comparison of ARX, PDX1, ATRX/DAXX and ALT status among 1322 neuroendocrine tumours of the pancreas and other organ sites

Tumour type	Total, n=1322	ARX-positive/ PDX1-negative	ARX-negative/ PDX1-positive	ARX-positive/ PDX1-positive	ARX-negative/ PDX1-negative	Loss of ATRX/DAXX	ALT-positive
Primary NF-PanNET	561	280 (50%)	113 (20%)	126 (22%)	42 (8%)	142 (25%)	160 (29%)
NF-PanNET metastases	107	71 (66%)	22 (21%)	14 (13%)	0 (0%)	66 (62%)	76 (71%)
Primary pulmonary carcinoid/atypical carcinoid	48	0 (0%)	0 (0%)	0 (0%)	48 (100%)	2 (4%)	2 (4%)
Carcinoid/atypical carcinoid metastases	28	0 (0%)	0 (0%)	0 (0%)	28 (100%)	0 (0%)	0 (0%)
Primary gastric NET	32	26 (82%)	2 (6%)	2 (6%)	2 (6%)	0 (0%)	0 (0%)
Gastric NET metastases	10	1 (10%)	0 (0%)	0 (0%)	9 (90%)	0 (0%)	0 (0%)
Primary duodenal NET	41	3 (7%)	15 (37%)	21 (51%)	2 (5%)	0 (0%)	0 (0%)
Duodenal NET metastases	32	9 (30%)	2 (7%)	19 (56%)	2 (7%)	0 (0%)	0 (0%)
Primary ampullary NET	7	3 (42%)	2 (29%)	2 (29%)	0 (0%)	0 (0%)	0 (0%)
Primary jejunal NET	35	0 (0%)	0 (0%)	0 (0%)	35 (100%)	0 (0%)	0 (0%)
Jejunal NET metastases	71	0 (0%)	0 (0%)	0 (0%)	71 (100%)	0 (0%)	0 (0%)
Primary ileal NET	123	0 (0%)	0 (0%)	0 (0%)	123 (100%)	0 (0%)	0 (0%)
Ileal NET metastases	151	0 (0%)	0 (0%)	0 (0%)	151 (100%)	0 (0%)	0 (0%)
Primary colonic NET	8	1 (12%)	0 (0%)	0 (0%)	7 (88%)	0 (0%)	0 (0%)
Colonic NET metastases	8	0 (0%)	0 (0%)	0 (0%)	8 (100%)	0 (0%)	0 (0%)
Primary rectal NET	17	16 (94%)	0 (0%)	1 (6%)	0 (0%)	0 (0%)	0 (0%)
Rectal NET metastases	10	10 (100%)	0 (0%)	0 (0%)	0 (0%)	0 (0%)	0 (0%)
Primary appendiceal NET	28	26 (93%)	0 (0%)	2 (7%)	0 (0%)	0 (0%)	0 (0%)
Primary gallbladder NET	2	0 (0%)	0 (0%)	0 (0%)	2 (100%)	0 (0%)	0 (0%)
Gallbladder NET metastases	3	0 (0%)	0 (0%)	0 (0%)	3 (100%)	0 (0%)	0 (0%)

ALT, alternative lengthening of telomeres; ARX, aristaless-related homeobox; ATRX, alpha-thalassemia/mental retardation X-linked; DAXX, death domain-associated protein; NET, neuroendocrine tumour; NF-PanNET, non-functional pancreatic neuroendocrine tumour; PDX1, pancreatic and duodenal homeobox 1.

maintenance programme are still being elucidated.^{37,38} However, ALT frequently coincides with alterations in *ATRX* and/or *DAXX*.²¹ Inactivation of *ATRX* and/or *DAXX* are late genomic events in the pathogenesis of NF-PanNETs and supported by the identification of intratumoural heterogeneity for both proteins and ALT.²⁴ The prognostic findings presented herein are consistent with previous studies evaluating *ATRX/DAXX* and ALT.^{18,22–24} Nonetheless, these reports have included diverse patient populations and, in certain aspects, are potentially of limited clinical relevance in demonstrating the utility of a NF-PanNET prognostic biomarker. For example, prior publications have not specifically addressed patients with NF-PanNETs of ≤ 2.0 cm and without regional lymph node metastases. These neoplasms are frequently identified incidentally by radiographic imaging and represent a clinical dilemma as to whether surgical management or continued surveillance is indicated. Based on our findings, the loss of *ATRX/DAXX* and the presence of ALT are associated with shorter RFS for NF-PanNET patients with ≤ 2.0 cm tumours and without regional lymph node metastases. Moreover, *ATRX/DAXX* loss and ALT positivity are independent, negative prognostic biomarkers for this subset of neoplasms. Given the large number of patients analysed across multiple geographic regions, our study seems sufficient to consider incorporating the status of *ATRX/DAXX* and/or ALT to the routine evaluation of NF-PanNETs and potentially the preoperative assessment of patients with small (≤ 2.0 cm) NF-PanNETs using cytopathological cell block material and/or core needle biopsies.^{32,39}

In support of the prognostic significance of *ATRX/DAXX* loss and ALT positivity among primary NF-PanNETs, both biomarkers were detected at a higher prevalence in NF-PanNET metastases. While the presence of ALT in NF-PanNETs correlated with the development of distant metastases, an interesting quandary was an improved DSS for patients with ALT-positive NF-PanNET metastases as compared with patients with ALT-negative NF-PanNET metastases. At first glance, these findings are seemingly contradictory; however, the results are in agreement with previous studies. Jiao *et al* and Dogeas *et al* both reported PanNET patients with ALT-positive liver metastases had a longer survival time and Kim *et al* observed that patients with ALT-positive primary tumours had better overall survival.^{16,23,40} Thus, the prognostic utility of ALT in NF-PanNETs may vary based on the disease context.

Except for 2 (4%) pulmonary carcinoids, the loss of *ATRX/DAXX* and the presence of ALT were not seen in other primary non-pancreatic NETs and NET metastases. Among non-pancreatic NETs, a relative paucity of *ATRX* and/or *DAXX* genomic alterations have been reported by whole exome sequencing and whole genomic sequencing studies.^{41–44} Thus, *ATRX/DAXX* loss and ALT may also serve as diagnostic biomarkers to suggest pancreatic origin for NET metastases where a primary site cannot be clinically determined; but, requires further studies to confirm these findings.⁴⁵ Additionally, our results indicate that *ATRX/DAXX* loss and ALT activation play important roles in the pathogenesis of NF-PanNETs, although not in NETs from other organ sites. In contrast, ARX and PDX1 are differentially expressed in gastric, duodenal, ampullary, colonic, rectal and appendiceal NETs. These findings are not surprising as both ARX and PDX1 are critical to the development of not only the islets of Langerhans, but also enteroendocrine cells of the gastrointestinal tract.²⁷ Interestingly, jejunal and ileal NETs were consistently negative for ARX and PDX1, while duodenal and ampullary NETs were positive for either transcription factor in 94% of cases.

In addition to the status of *ATRX/DAXX* and ALT, ARX and PDX1 have also been reported to be prognostic biomarkers for NF-PanNETs. Recently, Cejas *et al* reported that locoregional recurrences and distant metastases almost exclusively occurred in patients with ARX⁺PDX1⁻ and 'DN' NF-PanNETs.²⁶ However, the authors' patient cohort was enriched for patients with MEN1 syndrome. The absence of MEN1 patients within our study may explain the lack of statistical significance observed in the incidence of postoperative distant metastases/recurrences and RFS based on ARX⁺+DN status and PDX1 expression (PDX1⁺+DP). In fact, we found neither subgroup was associated with known adverse prognostic pathological features for NF-PanNETs. Expression of ARX in NF-PanNETs, regardless of PDX1 status, did correlate with large tumour size, high WHO grade, the presence of regional lymph node metastases, ALT positivity and loss of *ATRX/DAXX*; however, ARX expression was not associated with RFS in neither our full study cohort nor the subcohort of ≤ 2.0 cm NF-PanNETs without lymph node metastases.

It is worth noting that there are a few limitations to our study. This study represents one of the largest series of NF-PanNETs to be prognostically analysed for molecular biomarkers, but it is still retrospective in design and may suffer from surgical selection bias. In addition, although regional lymph node metastases can be challenging to detect preoperatively, not all patients had sufficient regional lymph nodes for evaluation. Among patients with primary NF-PanNETs, 11% underwent a limited pancreatectomy procedure (eg, enucleation or central pancreatectomy), and, as a result, regional lymphadenectomy was suboptimal for these patients. Enucleation and central pancreatectomy procedures are typically done in the setting of small NF-PanNETs (≤ 2.0 cm) because most of these tumours have an indolent clinical course. Within our study cohort, 18 of 196 (9%) of small NF-PanNETs developed postoperative distant metastases/recurrences and 28% and 39% of these cases were *ATRX/DAXX*-negative and ALT-positive, respectively. In comparison, loss of *ATRX/DAXX* and the presence of ALT were identified in only 5% and 6%, respectively, of non-metastatic, small NF-PanNETs. Thus, incorporating the status of *ATRX/DAXX* and ALT among ≤ 2.0 cm NF-PanNETs without regional lymph node metastases could aid in triaging patients for appropriate surgical management to ensure complete regional lymph node dissection. Additionally, the thresholds used for ARX and PDX1 immunolabelling within our study may not be the same as those used by Cejas *et al*.²⁶ Herein, we defined positive expression at a cut-off of $>10\%$ immunolabelling of neoplastic nuclei. While this may partially explain the discrepancy between the results of these two studies, the proportion of ARX⁺, PDX1⁺, DP and DN NF-PanNETs within our cohort was 50%, 20%, 22% and 8%, respectively, and similar to the cohort reported by Cejas *et al* of 43%, 19%, 28% and 10%, respectively.²⁶ Furthermore, ARX and PDX1 cannot be discounted as prognostic markers and may be useful in the setting of MEN1 syndrome. Finally, we used TMAs to evaluate a subset of NF-PanNETs and NETs from other organ sites. As a TMA consists of 'punches' of tumour tissue, each sample may not be representative of the entire tumour as compared with whole tissue sections. However, the potentially scant amount of tumour in TMAs can be beneficial as it allows for simulation of needle core biopsies, and, hence, useful in determining the utility of prognostic and diagnostic biomarkers by mimicking preoperative specimens. Moreover, there were no statistically significant differences between NF-PanNETs evaluated using TMAs and NF-PanNETs evaluated using whole sections. It is also important to underscore that immunolabelling

for ATRX and DAXX and telomere-specific FISH for ALT were performed at multiple institutions and the results were consistent across individual sites. Hence, our study further demonstrates the broad feasibility of implementing these biomarkers into clinical practice.

In summary, we report the comprehensive assessment of ARX, PDX1, ATRX, DAXX and ALT in a large, international and multi-institutional cohort of non-syndromic NF-PanNETs without synchronous distant metastases. Although the expression of ARX correlated with known adverse prognostic features, such as larger tumour size and high WHO grade, there was a lack of association with RFS. Comparatively, NF-PanNETs with ALT positivity or ATRX/DAXX loss showed several adverse prognostic factors and these patients had shorter RFS. Both the presence of ALT and loss of ATRX/DAXX in NF-PanNETs were negative, independent prognostic biomarkers for RFS including patients with small NF-PanNETs (≤ 2.0 cm), which represent a clinical dilemma for surgical management. Moreover, analysing a cohort of >1300 pancreatic and non-pancreatic NETs and metastases, the presence of ALT and loss of ATRX/DAXX were highly specific, diagnostic biomarkers of pancreatic origin. While further prospective studies are warranted, our findings underscore the utility of ALT and ATRX/DAXX as prognostic biomarkers for the preoperative and postoperative evaluation of NF-PanNETs, and, in the setting of an NET metastasis of unknown origin, as highly specific diagnostic biomarkers to indicate the possibility of a pancreatic primary.

Author affiliations

¹Department of Pathology, University Medical Center Utrecht, Utrecht University, Utrecht, The Netherlands

²Department of Pathology, Nowon Eulji Medical Center, Eulji University, Seoul, Republic of Korea

³Department of Pharmacology and Chemical Biology, University of Pittsburgh, Pittsburgh, PA, USA

⁴Department of Pathology, Asan Medical Center, University of Ulsan College of Medicine, Seoul, Republic of Korea

⁵Department of Pathology and Immunology, Washington University School of Medicine, St. Louis, MO, USA

⁶Department of Pathology, University of Pittsburgh Medical Center, Pittsburgh, PA, USA

⁷Department of Pathology, Johns Hopkins Medical Institutions, Baltimore, MD, USA

⁸Department of Pathology, Incheon St. Mary's Hospital, College of Medicine, The Catholic University of Korea, Incheon, Republic of Korea

⁹Department of Surgery, Amsterdam University Medical Center, Amsterdam, The Netherlands

¹⁰Department of Endocrinology and Internal Medicine, University Medical Center Utrecht, Utrecht, The Netherlands

¹¹Department of Surgery, University Medical Center Utrecht, Utrecht, The Netherlands

¹²Department of Endocrinology and Internal Medicine, Amsterdam University Medical Center, Amsterdam, The Netherlands

¹³Department of Clinical Sciences, Surgery, University of Texas Southwestern, Dallas, TX, USA

¹⁴Department of Surgery, University of Pittsburgh Medical Center, Pittsburgh, PA, USA

¹⁵Department of Surgery, NorthShore University Health System, Evanston, IL, USA

¹⁶Department of Surgery, West Virginia University Health Sciences Center, Morgantown, WV, USA

¹⁷Department of Medicine, University of Pittsburgh Medical Center, Pittsburgh, PA, USA

¹⁸ARC-Net Centre for Applied Research on Cancer, University and Hospital Trust of Verona, Verona, Italy

¹⁹Department of Diagnostics and Public Health, Section of Pathology, University of Verona, Verona, Italy

²⁰ENETS Center of Excellence, University and Hospital Trust of Verona, Verona, Italy

²¹The Pancreas Institute, University and Hospital Trust of Verona, Verona, Italy

²²Department of Medicine, Section of Oncology, University and Hospital Trust of Verona, Verona, Italy

²³Department of Pathology, Fondazione IRCCS Istituto Nazionale dei Tumori di Milano, Milan, Italy

²⁴Department of Medicine, Boston University School of Medicine, Boston, Massachusetts, USA

Twitter Antonio Pea @antonio pea and Aatur D Singhi @PancPathologist

Acknowledgements The authors would like to thank Mrs. Kate Smith and Mrs Lynn Wolkenstein for outstanding administrative assistance. In addition, the authors thank Drs Ralph H. Hruban and Matthew H. Kulke for helpful comments and suggestions.

Contributors Author contributions, study concept and design: WMH, LAAB, CMH, ADS. Acquisition of clinical and pathological data: WMH, LAAB, JYK, RO, Y-NS, T-CL, DC, MH, JB-C, SA, FHMM, CMH, GDV, MRV, ENVD, GJAO, KMAD, HJZ, AHZ, MH, KL, DG, JWM, AP, MCO, JFP, NB, MA, RB, JC, RD, KEF, AK, KM, SS, HS, AS, MN, XH, MNN, RTL, AM, BR, VC, CL, SB, AP, SC, LL, RS, MiM, MaM, AS, S-MH, LAAB, CMH, ADS. Analysis and interpretation of data: WMH, LAAB, JYK, RO, Y-NS, MH, JB-C, SA, MN, XH, CMH, ADS. Drafting of the manuscript: WMH, LAAB, CMH, ADS.

Funding This study was supported in part by grants from the Dutch Digestive Foundation/Maag Lever Darm Stichting (CDG 14–020) (to WMH and LAAB); Associazione Italiana Ricerca Cancro (AIRC 5×1000 n. 12 182 and Start up n. 18718), European Community ERANET PMTR-pNET (cod. D18TR5, B46C17000260001), Italian Ministry of Health (FIMPCUP_J38D19000690001), Fondazione Cariverona: Oncology Biobank Project (prot. 203885/2017) (to A. Scarpa); NRF-2016R1A2B4009381 from the National Research Foundation of Korea (to S-MH); the Basic/Translational Science Investigator Award from the North American Neuroendocrine Tumor Society supported by the Neuroendocrine Tumor Research Foundation (to CH); National Institute of Health (NIH/NCI 1R01CA263622), National Pancreas Foundation, Sky Foundation, and the Pittsburgh Liver Research Center at the University of Pittsburgh (NIH/NIDDK P30DK120531) (to ADS).

Competing interests None declared.

Patient consent for publication Not required.

Ethics approval Study approval was obtained from the University Medical Center (UMC) Utrecht Biobank Research Ethics Committee, Verona University and Hospital Trust Ethical Committee, Asan Medical Center, and Institutional Review Boards from Washington University and University of Pittsburgh (IRB# PRO13020493).

Provenance and peer review Not commissioned; externally peer reviewed.

Data availability statement All data relevant to the study are included in the article or uploaded as online supplemental information. All data relevant to this study were included in the article and are deidentified.

Supplemental material This content has been supplied by the author(s). It has not been vetted by BMJ Publishing Group Limited (BMJ) and may not have been peer-reviewed. Any opinions or recommendations discussed are solely those of the author(s) and are not endorsed by BMJ. BMJ disclaims all liability and responsibility arising from any reliance placed on the content. Where the content includes any translated material, BMJ does not warrant the accuracy and reliability of the translations (including but not limited to local regulations, clinical guidelines, terminology, drug names and drug dosages), and is not responsible for any error and/or omissions arising from translation and adaptation or otherwise.

Open access This is an open access article distributed in accordance with the Creative Commons Attribution Non Commercial (CC BY-NC 4.0) license, which permits others to distribute, remix, adapt, build upon this work non-commercially, and license their derivative works on different terms, provided the original work is properly cited, appropriate credit is given, any changes made indicated, and the use is non-commercial. See: <http://creativecommons.org/licenses/by-nc/4.0/>.

ORCID iDs

Wenzel M Hackeng <http://orcid.org/0000-0001-6795-179X>

Lodewijk A A Brosens <http://orcid.org/0000-0003-1341-8994>

G Johan A Offerhaus <http://orcid.org/0000-0003-2683-3986>

Muaz Ajjazi <http://orcid.org/0000-0003-1629-8895>

Claudio Luchini <http://orcid.org/0000-0003-4901-4908>

Aldo Scarpa <http://orcid.org/0000-0003-1678-739X>

Christopher M Heaphy <http://orcid.org/0000-0003-4264-1810>

Aatur D Singhi <http://orcid.org/0000-0003-3930-7096>

REFERENCES

- Dasari A, Shen C, Halperin D, *et al.* Trends in the incidence, prevalence, and survival outcomes in patients with neuroendocrine tumors in the United States. *JAMA Oncol* 2017;3:1335–42.
- Howlander N, Noone AM, Krapcho M. *Seer cancer statistics review, 1975-2017*. Bethesda, MD: National Cancer Institute, 2019.
- Zhang IY, Zhao J, Fernandez-Del Castillo C, *et al.* Operative versus Nonoperative management of nonfunctioning pancreatic neuroendocrine tumors. *J Gastrointest Surg* 2016;20:277–83.

- 4 Sadot E, Reidy-Lagunes DL, Tang LH, *et al.* Observation versus resection for small asymptomatic pancreatic neuroendocrine tumors: a matched case-control study. *Ann Surg Oncol* 2016;23:1361–70.
- 5 Network NCC. *Neuroendocrine and adrenal tumors (version 1.2019)*, 2019.
- 6 Falconi M, Eriksson B, Kaltsas G, *et al.* ENETS consensus guidelines update for the management of patients with functional pancreatic neuroendocrine tumors and non-functional pancreatic neuroendocrine tumors. *Neuroendocrinology* 2016;103:153–71.
- 7 Howe JR, Merchant NB, Conrad C, *et al.* The North American neuroendocrine tumor Society consensus paper on the surgical management of pancreatic neuroendocrine tumors. *Pancreas* 2020;49:1–33.
- 8 Haynes AB, Deshpande V, Ingkakul T, *et al.* Implications of incidentally discovered, nonfunctioning pancreatic endocrine tumors: short-term and long-term patient outcomes. *Arch Surg* 2011;146:534–8.
- 9 Kuo EJ, Salem RR. Population-Level analysis of pancreatic neuroendocrine tumors 2 cm or less in size. *Ann Surg Oncol* 2013;20:2815–21.
- 10 Cherenfant J, Stocker SJ, Gage MK, *et al.* Predicting aggressive behavior in nonfunctioning pancreatic neuroendocrine tumors. *Surgery* 2013;154:785–93.
- 11 Pea A, Yu J, Marchionni L, *et al.* Genetic analysis of small well-differentiated pancreatic neuroendocrine tumors identifies subgroups with differing risks of liver metastases. *Ann Surg* 2020;271:566–73.
- 12 Lloyd RV, Osamura RY, Klöppel G. *Who classification of tumours of endocrine organs*. Lyon, France: IARC Press, 2017.
- 13 McCall CM, Shi C, Cornish TC, *et al.* Grading of well-differentiated pancreatic neuroendocrine tumors is improved by the inclusion of both Ki67 proliferative index and mitotic rate. *Am J Surg Pathol* 2013;37:1671–7.
- 14 Reid MD, Bagci P, Ohike N, *et al.* Calculation of the Ki67 index in pancreatic neuroendocrine tumors: a comparative analysis of four counting methodologies. *Mod Pathol* 2016;29:93.
- 15 Hwang HS, Kim Y, An S, *et al.* Grading by the Ki-67 labeling index of endoscopic ultrasound-guided fine needle aspiration biopsy specimens of pancreatic neuroendocrine tumors can be underestimated. *Pancreas* 2018;47:1296–303.
- 16 Jiao Y, Shi C, Edil BH, *et al.* DAXX/ATRX, MEN1, and mTOR pathway genes are frequently altered in pancreatic neuroendocrine tumors. *Science* 2011;331:1199–203.
- 17 Scarpa A, Chang DK, Nones K, *et al.* Whole-Genome landscape of pancreatic neuroendocrine tumours. *Nature* 2017;543:65–71.
- 18 Roy S, LaFramboise WA, Liu T-C, *et al.* Loss of chromatin-remodeling proteins and/or CDKN2A associates with metastasis of pancreatic neuroendocrine tumors and reduced patient survival times. *Gastroenterology* 2018;154:2060–3.
- 19 Hong X, Qiao S, Li F, *et al.* Whole-Genome sequencing reveals distinct genetic bases for insulinomas and non-functional pancreatic neuroendocrine tumours: leading to a new classification system. *Gut* 2020;69:877–87.
- 20 Di Domenico A, Pipinikas CP, Maire RS, *et al.* Epigenetic landscape of pancreatic neuroendocrine tumours reveals distinct cells of origin and means of tumour progression. *Commun Biol* 2020;3:740.
- 21 Heaphy CM, de Wilde RF, Jiao Y, *et al.* Altered telomeres in tumors with ATRX and Daxx mutations. *Science* 2011;333:425.
- 22 Marinoni I, Kurrer AS, Vassella E, *et al.* Loss of Daxx and ATRX are associated with chromosome instability and reduced survival of patients with pancreatic neuroendocrine tumors. *Gastroenterology* 2014;146:453–60.
- 23 Kim JY, Brosnan-Cashman JA, An S, *et al.* Alternative lengthening of telomeres in primary pancreatic neuroendocrine tumors is associated with aggressive clinical behavior and poor survival. *Clin Cancer Res* 2017;23:1598–606.
- 24 Singhi AD, Liu T-C, Roncaioli JL, *et al.* Alternative lengthening of telomeres and loss of DAXX/ATRX expression predicts metastatic disease and poor survival in patients with pancreatic neuroendocrine tumors. *Clin Cancer Res* 2017;23:600–9.
- 25 Chan CS, Laddha SV, Lewis PW, *et al.* Atrx, Daxx or MEN1 mutant pancreatic neuroendocrine tumors are a distinct alpha-cell signature subgroup. *Nat Commun* 2018;9:4158.
- 26 Cejas P, Drier Y, Dreijerink KMA, *et al.* Enhancer signatures stratify and predict outcomes of non-functional pancreatic neuroendocrine tumors. *Nat Med* 2019;25:1260–5.
- 27 Du A, McCracken KW, Walp ER, *et al.* Arx is required for normal enteroendocrine cell development in mice and humans. *Dev Biol* 2012;365:175–88.
- 28 Hackeng WM, Schelhaas W, Morsink FHM, *et al.* Alternative lengthening of telomeres and differential expression of endocrine transcription factors distinguish metastatic and non-metastatic insulinomas. *Endocr Pathol* 2020;31:108–18.
- 29 Corbo V, Dalai I, Scardoni M, *et al.* Men1 in pancreatic endocrine tumors: analysis of gene and protein status in 169 sporadic neoplasms reveals alterations in the vast majority of cases. *Endocr Relat Cancer* 2010;17:771–83.
- 30 Rindi G, Klimstra DS, Abedi-Ardekani B, *et al.* A common classification framework for neuroendocrine neoplasms: an international agency for research on cancer (IARC) and world Health organization (who) expert consensus proposal. *Mod Pathol* 2018;31:1770–86.
- 31 Amin MB, Edge SB, Green F. *Ajcc cancer staging manual*. Springer International Publishing, 2017.
- 32 Hackeng WM, Morsink FHM, Moons LMG, *et al.* Assessment of ARX expression, a novel biomarker for metastatic risk in pancreatic neuroendocrine tumors, in endoscopic ultrasound fine-needle aspiration. *Diagn Cytopathol* 2020;48:308–15.
- 33 Cesare AJ, Heaphy CM, O’Sullivan RJ. Visualization of telomere integrity and function in vitro and in vivo using immunofluorescence techniques. *Current Protocols in Cytometry* 2015;73:1–31.
- 34 Ellison TA, Wolfgang CL, Shi C, *et al.* A single institution’s 26-year experience with nonfunctional pancreatic neuroendocrine tumors: a validation of current staging systems and a new prognostic nomogram. *Ann Surg* 2014;259:204–12.
- 35 Fung AD, Cohen C, Kavuri S, *et al.* Phosphohistone H3 and Ki-67 labeling indices in cytologic specimens from well-differentiated neuroendocrine tumors of the gastrointestinal tract and pancreas: a comparative analysis using automated image cytometry. *Acta Cytol* 2013;57:501–8.
- 36 Estrella JS, Broaddus RR, Mathews A, *et al.* Progesterone receptor and PTEN expression predict survival in patients with low- and intermediate-grade pancreatic neuroendocrine tumors. *Arch Pathol Lab Med* 2014;138:1027–36.
- 37 Dille RL, Verma P, Cho NW, *et al.* Break-Induced telomere synthesis underlies alternative telomere maintenance. *Nature* 2016;539:54–8.
- 38 Zhang J-M, Yadav T, Ouyang J, *et al.* Alternative lengthening of telomeres through two distinct break-induced replication pathways. *Cell Rep* 2019;26:955–68.
- 39 VandenBussche CJ, Allison DB, Graham MK, *et al.* Alternative lengthening of telomeres and ATRX/DAXX loss can be reliably detected in FNAs of pancreatic neuroendocrine tumors. *Cancer Cytopathol* 2017;125:544–51.
- 40 Dogeas E, Karagkounis G, Heaphy CM, *et al.* Alternative lengthening of telomeres predicts site of origin in neuroendocrine tumor liver metastases. *J Am Coll Surg* 2014;218:628–35.
- 41 Karpathakis A, Dibra H, Pipinikas C, *et al.* Prognostic impact of novel molecular subtypes of small intestinal neuroendocrine tumor. *Clin Cancer Res* 2016;22:250–8.
- 42 Francis JM, Kiezun A, Ramos AH, *et al.* Somatic mutation of CDKN1B in small intestine neuroendocrine tumors. *Nat Genet* 2013;45:1483–6.
- 43 Simbolo M, Mafficini A, Sikora KO, *et al.* Lung neuroendocrine tumours: deep sequencing of the four World Health organization histotypes reveals chromatin-remodelling genes as major players and a prognostic role for TERT, Rb1, MEN1 and KMT2D. *J Pathol* 2017;241:488–500.
- 44 Asiedu MK, Thomas CF, Dong J, *et al.* Pathways impacted by genomic alterations in pulmonary carcinoid tumors. *Clin Cancer Res* 2018;24:1691–704.
- 45 Hackeng WM, Dreijerink KMA, de Leng WWJ, *et al.* Genome methylation accurately predicts neuroendocrine tumor origin: an online tool. *Clin Cancer Res* 2021;27:1341–50.