

Therapies for Long COVID in non-hospitalised individuals

Haroon, Shamil; Nirantharakumar, Krishnarajah; Hughes, Sarah; Subramanian, Anuradhaa; Aiyegbusi, Olalekan Lee; Davies, Elin Haf ; Myles, Puja R; Williams, Tim; Turner, Grace; Chandan, Joht; McMullan, Christel; Lord, Janet; Wraith, David; McGee, Kirsty; Denniston, Alastair; Taverner, Thomas; Jackson, Louise; Sapey, Elizabeth; Gkoutos, Georgios; Gokhale, Krishna

DOI:

[10.1136/bmjopen-2021-060413](https://doi.org/10.1136/bmjopen-2021-060413)

License:

Creative Commons: Attribution (CC BY)

Document Version

Publisher's PDF, also known as Version of record

Citation for published version (Harvard):

Haroon, S, Nirantharakumar, K, Hughes, S, Subramanian, A, Aiyegbusi, OL, Davies, EH, Myles, PR, Williams, T, Turner, G, Chandan, J, McMullan, C, Lord, J, Wraith, D, McGee, K, Denniston, A, Taverner, T, Jackson, L, Sapey, E, Gkoutos, G, Gokhale, K, Leggett, E, Iles, C, Frost, C, McNamara, G, Bamford, A, Marshall, T, Zemedikun, D, Price, G, Marwaha, S, Simms-Williams, N, Brown, K, Walker, A, Jones, K, Matthews, K, Camaradou, J, Saint-Cricq, M, Kumar, S, Alder, Y, Stanton, DE, Agyen, L, Baber, M, Blaize, H & Calvert, M 2022, 'Therapies for Long COVID in non-hospitalised individuals: from symptoms, patient-reported outcomes and immunology to targeted therapies (The TLC Study)', *BMJ open*, vol. 12, no. 4, e060413. <https://doi.org/10.1136/bmjopen-2021-060413>

[Link to publication on Research at Birmingham portal](#)

General rights

Unless a licence is specified above, all rights (including copyright and moral rights) in this document are retained by the authors and/or the copyright holders. The express permission of the copyright holder must be obtained for any use of this material other than for purposes permitted by law.

- Users may freely distribute the URL that is used to identify this publication.
- Users may download and/or print one copy of the publication from the University of Birmingham research portal for the purpose of private study or non-commercial research.
- User may use extracts from the document in line with the concept of 'fair dealing' under the Copyright, Designs and Patents Act 1988 (?)
- Users may not further distribute the material nor use it for the purposes of commercial gain.

Where a licence is displayed above, please note the terms and conditions of the licence govern your use of this document.

When citing, please reference the published version.

Take down policy

While the University of Birmingham exercises care and attention in making items available there are rare occasions when an item has been uploaded in error or has been deemed to be commercially or otherwise sensitive.

If you believe that this is the case for this document, please contact UBIRA@lists.bham.ac.uk providing details and we will remove access to the work immediately and investigate.

BMJ Open Therapies for Long COVID in non-hospitalised individuals: from symptoms, patient-reported outcomes and immunology to targeted therapies (The TLC Study)

Shamil Haroon ¹, Krishnarajah Nirantharakumar ^{1,2}, Sarah E Hughes ^{1,3}, Anuradha Subramanian ¹, Olalekan Lee Aiyegbusi ^{1,3}, Elin Haf Davies,⁴ Puja Myles,⁵ Tim Williams,⁵ Grace Turner ¹, Joht Singh Chandan,¹ Christel McMullan ¹, Janet Lord ⁶, David C Wraith ⁷, Kirsty McGee ⁶, Alastair K Denniston ⁸, Thomas Taverner,¹ Louise J Jackson ¹, Elizabeth Sapey ⁶, George Gkoutos ⁹, Krishna Gokhale,¹ Edward Leggett,⁵ Clare Iles,⁵ Christopher Frost,⁴ Gary McNamara,⁴ Amy Bamford,⁸ Tom Marshall ¹, Dawit T Zemedikun ¹, Gary Price,¹⁰ Steven Marwaha ¹¹, Nikita Simms-Williams ¹, Kirsty Brown ¹, Anita Walker,¹ Karen Jones,¹ Karen Matthews,¹⁰ Jennifer Camaradou,¹⁰ Michael Saint-Cricq,¹⁰ Sumita Kumar,¹⁰ Yvonne Alder,¹⁰ David E Stanton,¹⁰ Lisa Agyen,¹⁰ Megan Baber,¹⁰ Hannah Blaize,¹⁰ Melanie Calvert ^{1,2}

To cite: Haroon S, Nirantharakumar K, Hughes SE, *et al.* Therapies for Long COVID in non-hospitalised individuals: from symptoms, patient-reported outcomes and immunology to targeted therapies (The TLC Study). *BMJ Open* 2022;12:e060413. doi:10.1136/bmjopen-2021-060413

► Prepublication history for this paper is available online. To view these files, please visit the journal online (<http://dx.doi.org/10.1136/bmjopen-2021-060413>).

Received 21 December 2021
Accepted 31 March 2022



© Author(s) (or their employer(s)) 2022. Re-use permitted under CC BY. Published by BMJ.

For numbered affiliations see end of article.

Correspondence to

Dr Shamil Haroon;
s.haroon@bham.ac.uk

ABSTRACT

Introduction Individuals with COVID-19 frequently experience symptoms and impaired quality of life beyond 4–12 weeks, commonly referred to as Long COVID. Whether Long COVID is one or several distinct syndromes is unknown. Establishing the evidence base for appropriate therapies is needed. We aim to evaluate the symptom burden and underlying pathophysiology of Long COVID syndromes in non-hospitalised individuals and evaluate potential therapies.

Methods and analysis A cohort of 4000 non-hospitalised individuals with a past COVID-19 diagnosis and 1000 matched controls will be selected from anonymised primary care records from the Clinical Practice Research Datalink, and invited by their general practitioners to participate on a digital platform (Atom5). Individuals will report symptoms, quality of life, work capability and patient-reported outcome measures. Data will be collected monthly for 1 year.

Statistical clustering methods will be used to identify distinct Long COVID-19 symptom clusters. Individuals from the four most prevalent clusters and two control groups will be invited to participate in the BioWear substudy which will further phenotype Long COVID symptom clusters by measurement of immunological parameters and actigraphy.

We will review existing evidence on interventions for postviral syndromes and Long COVID to map and prioritise interventions for each newly characterised Long COVID syndrome. Recommendations will be made using the cumulative evidence in an expert consensus workshop. A virtual supportive intervention will be

Strengths and limitations of this study

- The study will generate a nationally representative cohort of individuals with Long COVID recruited from primary care.
- We will recruit controls matched on a wide range of demographic and clinical factors to assess differences in symptoms between people with Long COVID and similar individuals without a history of COVID-19.
- We will use a newly developed electronic patient-reported outcome measure (Symptom Burden Questionnaire) for Long COVID to comprehensively assess a wide range of symptoms highlighted by existing literature, patients and clinicians.
- Immunological, proteomic, genetic and wearable data captured in the study will allow deep phenotyping of Long COVID syndromes to help better target therapies.
- A limitation is that a significant proportion of non-hospitalised individuals affected by COVID-19 in the first wave of the pandemic will lack confirmatory testing and will be excluded from recruitment to the study.

coproduced with patients and health service providers for future evaluation. Individuals with lived experience of Long COVID will be involved throughout this programme through a patient and public involvement group.



Ethics and dissemination Ethical approval was obtained from the Solihull Research Ethics Committee, West Midlands (21/WM/0203). Research findings will be presented at international conferences, in peer-reviewed journals, to Long COVID patient support groups and to policymakers.

Trial registration number 1567490.

INTRODUCTION

COVID-19, caused by SARS CoV-2, is the most significant pandemic since the Spanish Influenza Pandemic of 1918. There have been over 240 million cases worldwide, including over 8.4 million cases in the UK.^{1 2} In the UK, this has resulted in over 550 000 hospital admissions and 160 000 deaths.^{3 4}

SARS CoV-2 enters human cells using the angiotensin II receptor, which is widely expressed throughout the body. COVID-19 is consequently a multisystem disorder affecting the lungs, heart, gut, kidneys, brain and skin. A wide range of symptoms have been associated with COVID-19 including breathlessness, fatigue, fever, myalgia, 'brain fog' and anosmia.⁵

Symptoms resolve within 12 weeks in most affected individuals. However, in up to 10% of individuals, symptoms of COVID-19 persist, sometimes in a relapsing remitting manner.⁶ This can have significant impacts on physical and neurocognitive functioning, quality of life and work capability.⁵ Those having symptoms lasting beyond 12 weeks are referred to as experiencing post-COVID-19 syndrome (National Institute for Health and Care Excellence 2019) or more widely known as Long COVID.⁷

The cause of Long COVID is poorly understood. However, there is evidence from other postviral syndromes that may be applicable to Long COVID. Evidence from existing studies on COVID-19 suggest a significant burden of pathophysiological insults and sequelae such as lung scarring, kidney injury, myocarditis and systemic inflammatory states that may promulgate long-term symptoms.⁵ It is possible that autoimmune pathways may be triggered by COVID-19, leading to multisystem inflammatory damage.⁸

Current evidence suggests that 2.3%–37% of individuals with COVID-19 experience symptoms and impaired quality of life and frequently report experiencing heterogeneous physical and psychological symptoms beyond 12 weeks ('Long COVID') that can be debilitating.^{9–11} People living with Long COVID have indicated that they are suffering with a range of symptoms, feel 'abandoned' and 'dismissed' by healthcare providers and receive limited or conflicting advice.¹² The aetiology, pathophysiology and treatments for Long COVID are not well understood, creating an unmet need for the growing number of affected individuals. Although efforts are being made to study Long COVID in hospitalised patients, there is a large unmet need among non-hospitalised individuals. Long COVID may comprise several distinct syndromes yet to be fully characterised.¹³

Existing evidence on Long COVID is based on hospitalised cohorts and non-selected populations that are

unlikely to be generalisable to the wider UK population of non-hospitalised individuals. A representative population-based cohort with well-matched controls, ideally derived from primary care, is needed to understand the burden of Long COVID, associated disability and impact on work capability. Current literature suggests the physical and psychological symptoms of Long COVID are highly diverse and may represent several distinct syndromes.¹⁴ The characterisation of these syndromes using real-world data in combination with patient-reported outcomes (PROs) would aid health services to deliver appropriate interventions to meet these health needs.

The aetiology and risk factors for Long COVID also need further investigation as literature suggests a disproportionately higher prevalence of Long COVID among women, older adults and individuals with specific symptom clusters.^{11 15 16} This may be due to differing immunological profiles of individuals who go on to develop Long COVID.^{17 18} For example, older adults with COVID-19 show higher levels of senescent T cells.¹⁹ As these are pro-inflammatory, more likely to be auto-immune and tissue-damaging, their persistence could mediate distinct symptoms in Long COVID among these individuals. Understanding the immunological basis of Long COVID would better enable clinicians to offer targeted therapies.²⁰

There is an urgent need for evidence-based, accessible interventions, co-produced with patients with lived experience of COVID-19, to better support the growing number of non-hospitalised individuals with Long COVID. We propose to derive treatment recommendations drawing on existing approaches to the management of postviral syndromes in addition to a detailed understanding of Long COVID syndromes.

There is also a need to develop a trial platform that can link symptom, primary care and hospital data with immunological profiling to evaluate interventions for Long COVID in non-hospitalised patients. The Randomised Evaluation of COVID-19 Therapy (RECOVERY) Trial and the Post-hospitalisation COVID-19 (PHOSP-COVID) Study have demonstrated the strength of platforms where several interventions can be rapidly evaluated in secondary care.^{21 22} The Platform Randomised Trial of Treatments in the Community for Endemic and Pandemic Illnesses (PRINCIPLE) Trial study was set up for non-hospitalised patients in primary care with acute COVID-19.²³ However, such an infrastructure is still needed for affected individuals with Long COVID in the wider community, and studies such as Symptoms, Trajectory, Inequalities and Management: Understanding Long-COVID to Address and Transform Existing Integrated Care Pathways (STIMULATE-ICP) Study are being set up to help address this.²⁴

The TLC Study will directly address the patient needs highlighted in the National Institute for Health Research (NIHR) Evidence Report, by the LongCovidSOS campaign, our patient and public involvement (PPI) group and patient partners, who have co-designed this study.^{13 25} Our research will characterise the symptoms,

health impacts and underlying pathophysiology of Long COVID, define its component syndromes in non-hospitalised individuals and provide resources to support symptom management and nurse-led support for those with the severest symptoms. We will use our findings to co-produce with patients a targeted intervention for Long COVID, tailored to individual patient needs.

AIMS

The aim of the study is to evaluate the symptom burden and underlying pathophysiology of Long COVID syndromes in non-hospitalised individuals and the impact on quality of life and work capability. We also aim to identify potential therapies and co-produce a remotely delivered intervention for supporting individuals with Long COVID syndromes. These findings will be used to inform a feasibility study to evaluate the intervention produced during this project, and to plan future evaluations of supportive and pharmacological interventions for treating Long COVID. The methods for therapy identification, intervention development and feasibility testing will be reported in separate linked protocols.

The key objectives are:

1. To establish a representative population-based cohort of non-hospitalised individuals with COVID-19 and prolonged symptoms ('Long COVID').
2. To validate a new patient-reported outcome (PRO) measure of symptom burden in individuals with Long COVID- the Symptom Burden Questionnaire for Long COVID.
3. To collect validated PROs including symptoms, quality of life and work capability data longitudinally from the representative cohort of non-hospitalised individuals with Long COVID.
4. To identify distinct symptom clusters ('syndromes') in individuals with Long COVID and compare these Long COVID syndromes with known postviral syndromes.
5. To measure immunological, proteomic and microRNA biomarkers to determine the underlying pathogenesis associated with Long COVID syndromes. To capture physical health measures via a wearable device to determine the physical exertions (heart rate intensity and movement) and sleep patterns observed in Long COVID syndromes.
6. To make recommendations on pharmacological and supportive therapies that: (i) should be implemented without need for further evaluation; (ii) should be evaluated in a clinical trial and (iii) should not be recommended for treating long COVID based on the available evidence.
7. Co-produce a supportive, remotely delivered intervention for individuals with Long COVID, to address the symptoms associated with each Long COVID syndrome.
8. To evaluate PPI in the study.

METHODS AND ANALYSIS

Study design

We will undertake a population-based cohort study of non-hospitalised individuals with Long COVID (cases) and matched controls recruited from general practices in England that contribute data to the Clinical Practice Research Datalink (CPRD) Aurum database (figure 1).²⁶ CPRD is a real-world research service supporting retrospective and prospective public health and clinical studies. CPRD is jointly sponsored by the Medicines and Healthcare Products Regulatory Agency and the National Institute for Health Research (NIHR), as part of the Department of Health and Social Care. CPRD collects anonymised patient data from a network of general practitioners (GP) across the UK. Primary care data are linked to a range of other health-related data to provide a longitudinal, representative UK population health dataset. The data in CPRD Aurum encompass 40 million research acceptable patients, including 13 million currently registered patients.

Eligible cases and controls will be invited to participate in the study and to report their symptoms, quality of life and work capability monthly for 12 months on a digital platform called Atom5 produced by the medical technology company Aparito Ltd. Cluster analysis methods will be used to define symptom clusters, which will be further described using data from linked GP records, hospital episode statistics and Office for National Statistics (ONS) mortality records.

A subgroup of participants sampled from each symptom cluster and two matched control groups (those with no history of COVID-19, and those with a history of COVID-19 but who did not develop Long COVID) will be invited to provide blood and saliva samples to measure their immune function, and proteomic and genomic profile (BioWear substudy). These participants will also be provided a Garmin wearable device to monitor heart rate, oxygen saturation, step count, sleep quality and postexertional effects. The start and end dates for the project will be March 2021 to February 2023. Recruitment will take place from November 2021 to May 2022.

Population and setting

Eligible practices and participants will be identified from the CPRD Aurum database²⁶ following data extraction using the Data Extraction for Epidemiological Research tool.²⁷ Practices to enrol in the cohort study will be selected using probability weighted sampling to ensure adequate geographic representation and oversampling of practices with larger numbers of patients with a history of COVID-19, low socioeconomic status and higher proportions from black and ethnic minority groups, while also preserving the balance of urban versus rural practices. Eligible patients from those practices will be flagged, with oversampling of cases from lower socioeconomic groups, ethnic minorities and those who received a SARS CoV-2 RT-PCR-positive result in 2021.

Overview of the Therapies for Long COVID study

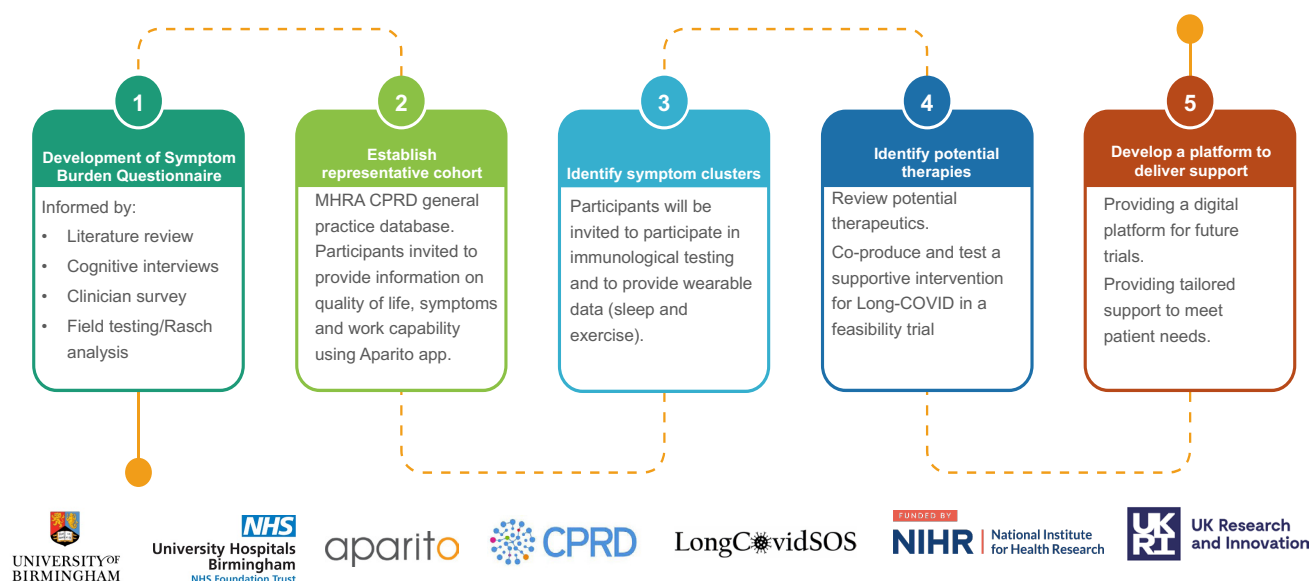


Figure 1 Project overview.

Participants will need to be actively registered on 31 January 2020 and have at least 12 months of data prior to 31 January 2020. Cases will be defined as those aged 18 years and older with a record of a positive SARS CoV-2 RT-PCR result (index date) and no record of hospitalisation within 28 days of the diagnosis. Controls will be defined as individuals without a record of a positive SARS CoV-2 RT-PCR result or suspected or confirmed COVID-19 diagnosis at any time point from 31 January 2020. Each case will be matched to four controls using propensity scores derived from demographic factors (age, sex, ethnic group and socioeconomic status) and a comprehensive list of comorbidities. Controls will only be eligible if they have not been hospitalised within 28 days of the matched index date.

Participant recruitment

Participating GP practices will be informed of eligible participants and asked to check their appropriateness for study invitation through the CPRD's Interventional Research Services Platform. Those verified as meeting the eligibility criteria and assessed as appropriate for study invitation by their general practitioner will be sent an invitation letter and patient information sheet, which will provide instructions on how to download the Atom5 app or access the web portal and a unique onboarding code to register for the study. The study consent form will be hosted on Atom5, which will include additional eligibility checks to ensure potential participants meet the study criteria. Participants unable to directly access Atom5, for example due to inadequate technology access, will also be

offered a telephone interview to complete the questionnaires with a research nurse. Language translators will also be provided when required.

Patient-reported outcomes

Participants enrolled on Atom5 will be asked to complete a novel electronic PRO called the Symptom Burden Questionnaire for Long COVID (SBQ-LC). This includes a comprehensive list of symptoms that were identified from a systematic review of symptoms associated with Long COVID,⁵ discussions with patients with Long COVID and clinicians, and field testing. Participants will also be asked to complete the Functional Assessment of Chronic Illness Therapy-Fatigue, Patient Health Questionnaire-2, Generalised Anxiety Disorder-2, abbreviated post-traumatic stress disorder checklist 2, modified Medical Research Council Dyspnoea Scale, COVID-19 core outcome measure for recovery and Euroqol EQ-5D-5L and answer questions about work capability. Participants will be notified to complete these measures monthly for a total of 12 months.

Defining symptom clusters

The symptom data captured at baseline in Atom5 in addition to clinical data from primary care records will be used to define symptom clusters. We will employ clustering algorithms that have been shown to work well in medical settings, with binary and mixed variables: (1) complete linkage hierarchical clustering; (2) probabilistic c-means cluster analysis and (3)

density peaked clustering analysis. We will evaluate algorithm performance and the optimal number of clusters (eg, by internal validation against a holdout dataset using metrics such as Gap statistic and silhouette index).^{28 29}

The demographic and clinical characteristics of individuals in each symptom cluster will be described using data from Atom5 and linked GP records in CPRD Aurum. This will include age, sex, ethnic group, socioeconomic status, smoking status, body mass index, SARS CoV-2 immunisation status and comorbidities. Clinical outcomes for each of these clusters will be described using linked Hospital Episode Statistics and ONS mortality data.

BioWear substudy

Fifty participants sampled from the four most prevalent symptom clusters, 50 from the control group without a history of COVID-19 and 50 with a history of COVID-19 but without Long COVID, will be recruited to provide blood and saliva samples at the Clinical Research Facility at University Hospitals Birmingham or alternatively at the participant's home. These samples will be used to measure immune function (inflammatory markers, T-cell function and autoantibodies), proteomics and genomic profile.

We will analyse a broad spectrum of antineutrophil and organ-specific autoantibodies in serum samples by indirect immunofluorescence including but not restricted to adrenal, autoimmune encephalitis, antineutrophil, antineutrophil cytoplasmic antibodies, cardiac, epidermal, islet cell, a range of cerebellar (Purkinje cell) antibodies, smooth muscle, mitochondrial, gastric parietal cell, skeletal muscle and endomysial antibodies. The assays undertaken included the full range of autoimmune tests available in an accredited ISO 15189:2012 National Health Service (NHS) Clinical Immunology laboratory. For the plasma proteomic study, we will use a broad platform, Somascan, which detects 7000 proteins. This will include 51 inflammatory proteins that will allow us to estimate the degree of immune ageing in different Long COVID clusters. The additional data will include biomarkers previously shown to be associated with an increased risk of a range of diseases including heart disease, respiratory disease and frailty, allowing us insight into the long-term outcomes of our volunteers.

These participants will also be provided a Garmin Vivosmart 4 device to measure heart rate, oxygen saturation, step count and sleep quality at baseline, 6 months and 12 months. Notifications will be sent once a month to undertake a 40-step test once a week for each week of device use, to assess for postexertional effects of Long COVID. Together these data will allow for detailed immunological and digital phenotyping of the newly described symptom clusters.

Sample size

We aim to recruit 4000 individuals with a history of COVID-19, with a minimum sample of 2000 (figure 2). We also aim to recruit 1000 matched controls, with a minimum of 500. Reliable detection of clustered data via well-chosen combinations of these methods has been shown to require a minimum of 20–30 observations per subgroup provided good cluster separation exists (effect size $\Delta=4$ or over).³⁰ We expect that with 500 patients in the Long COVID cohort we will have power above 80% to detect well-separated clusters comprising at least 5% of the cohort for $K=4-6$ clusters.

Analysis plan

Unsupervised exploratory clustering techniques will be employed to identify distinct Long COVID symptom clusters. We will first perform dimension reduction using one of: multidimensional scaling, t-stochastic neighbour embedding and uniform manifold approximation and projection. This first step will reduce dimensionality of the global dataset while retaining local distances between individuals.

Following the dimensionality reduction step, we will employ clustering algorithms that have been shown to work well in medical settings:

1. K-means clustering, which locates the stable set of centroids of a predetermined number of k clusters.
2. Fuzzy c-means cluster analysis, a version of K-means clustering which allows data points to have partial cluster membership.
3. Hierarchical agglomerative clustering, which joins observations in a recursive fashion satisfying some linkage criterion until k clusters have been generated. We will use the Ward linkage, which joins observations that minimise the variance of merged clusters.
4. Gaussian finite mixture models, a model-based approach to clustering which associate each data point with a multivariate (ellipsoidal) Gaussian distribution.
5. Density-based spatial clustering of applications with noise (DBSCAN)/Hierarchical Density-based Spatial Clustering of Applications with Noise (HDBSCAN), algorithms, which identify clusters of dense observations among unassigned lower-density observations.

The optimal number of clusters for all methods (except DBSCAN) will be determined using model selection methods and internal cross-validation. Cluster membership goodness of fit will be evaluated by: (1) the Jaccard similarities (intersection size divided by union size) of the original clusters to the most similar clusters in the resampled data and (2) the average silhouette score, which will vary between +1 for an observation aligned with its cluster centre and -1 for an observation aligned with the centre of another cluster. We will determine mean bootstrapped Jaccard and silhouette indices to assess cluster stability. The plot of within-groups sum of squares versus K will be

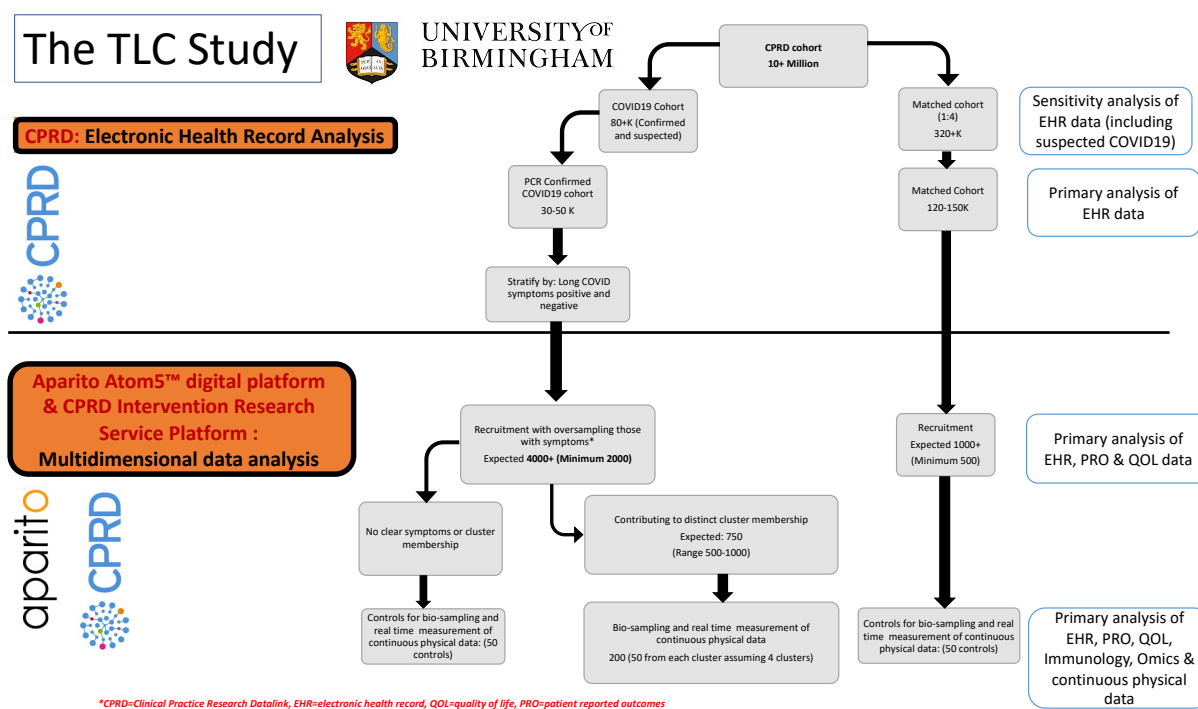


Figure 2 Study flow chart. CPRD, Clinical Practice Research Datalink; EHR, electronic health record; QOL, quality of life; PRO, patient-reported outcome.

checked graphically for optimal K (elbow method) and a minimum BIC.

Other planned work

Epidemiology of Long COVID in primary care

We will undertake an epidemiological analysis of Long COVID symptoms and clinical outcomes using data from GP records in CPRD Aurum.³¹ The prevalence of these symptoms will be compared with those in matched controls. Risk factors associated with the development of long-term symptoms in those with a history of COVID-19 will be described. Cluster analyses will be performed to identify distinct Long COVID phenotypes and their risk of hospital admission and mortality will be assessed.

Impact of Long COVID on healthcare utilisation and costs

The utilisation of a range of healthcare services (eg, GP consultations, pharmacotherapy, secondary care referrals and hospital admissions) within 12 months from the index date will be identified and enumerated for both cases and control groups, with UK unit costs (2021 values) assigned to each component.

To estimate the costs associated with primary care resource use, we will measure different types of GP consultations (surgery visits, home visits and telephone consultations). Unit costs (per visit) for each type of consultation will be derived from the Unit

Costs of Health and Social Care (2020).³² As it is not feasible to cost all medications prescribed for both the cases and control groups during the study period, we will focus only on a broad definition of relevant medications which could include respiratory (eg, inhaled short-acting beta-2 agonists) and cardiovascular (eg, aspirin) therapies. The costs of prescribed medications will be obtained from NHS Electronic Drug Tariffs, BNF or Prescription Cost Analysis. Costs associated with hospital admissions will be derived from linked HES Admitted Patient Care data. Other secondary care costs will be estimated based on secondary care referrals from primary care, which will include outpatient and accident and emergency referrals. The average costs per episode for each type of resource use will be obtained using NHS Reference Costs.³³

The annual costs of healthcare utilisation for each different area of resource use will then be estimated as a product of the quantities of the resource per year and the attached unit costs. The total costs of all healthcare resource utilisation for each patient will be aggregated to make up the total direct costs of healthcare resource utilisation. Multivariable regression models will be used to estimate the incremental difference in the total all-cause healthcare costs between cases and controls controlling for demographic, clinical and other confounding factors.

Impact of Long COVID on work capability and economic losses

To understand the broader impacts of long COVID on individuals and families, it is necessary to analyse work capability and economic losses. We will use lost productivity (absenteeism) as a proxy for indirect costs incurred since that is the most feasible cost component that can be captured in our data. Medically related absenteeism days will be estimated by identifying patients who reported work absence/changes in working hours using questions captured within Atom5, and their linked sick notes recorded in CPRD data. The associated costs will be calculated by applying average national earnings or based on individual employee wage information where available.

The human capital approach which is the most commonly used method for estimating the indirect costs of illnesses will be adopted.^{34 35} This method equates the costs of illnesses to the losses of future total income that patients could have earned had they remained healthy, revealing the opportunity costs associated with Long COVID in this case. Indirect costs incurred during the study period will be compared between the case and control groups using Wilcoxon signed-rank tests. Multi-variable regression models will assess incremental cost differences between cases and controls, adjusting for confounding factors.

Postviral syndromes: a systematic review of symptoms, health impacts, treatments and their implications for Long COVID

This systematic review will narratively and quantitatively summarise the evidence on the prevalence of symptoms and health impacts (clinical complications and impacts on quality of life and work capability) associated with previous postviral syndromes (eg, postviral effects of the Middle East respiratory syndrome). The review will also summarise the evidence from randomised controlled trials and observational studies on non-pharmacological treatments for postviral syndromes including Long COVID. A review protocol will be published separately.

Survey of non-prescribed medication, supplements, remedies and other therapies for Long COVID

A cross-sectional electronic survey will be undertaken to capture the non-prescribed medicines, supplements, remedies and other therapies used by individuals with long COVID to manage their symptoms, and what influenced their decision making. The aim is to identify self-prescribed therapies that are potentially harmful and pose clinical risks. This survey was suggested by members of the PPI group who reported their awareness of individuals self-medicating with a range of alternative therapies and highlighted the importance of capturing data on these self-management behaviours.

Consensus and co-production workshops

A series of expert consensus workshops will be convened to make recommendations on non-pharmacological therapies to be evaluated in clinical trials, and to be recommended against, based on the cumulative evidence from

the rapid systematic review and primary findings from WP2. The consensus workshop will follow the James Lind Alliance final priority setting method, based on Nominal Group Technique.³⁶ In addition, decision making will be guided by the APEASE criteria.³⁷ Particular consideration will be given to non-pharmacological therapies (eg, physiotherapy, breathing techniques, sleep hygiene) that can be delivered digitally and at scale.

Subsequently, intervention co-production workshops will be held to determine which of the agreed interventions are suitable for or could be adapted for remote delivery. Person-centred design principles will be applied to co-produce a supportive, remotely delivered intervention, or identify and select existing tools or resources for evaluation via Atom5, guided by the 'building blocks of co-production' framework.³⁸

Expert consensus and co-production workshops will be attended by people who have experienced Long COVID and their family members, friends or carers; healthcare professionals; experts in symptoms and potential treatments relevant to Long COVID; regulators and policy makers.

Feasibility study

A feasibility study will be undertaken on the newly coproduced intervention. This will assess the feasibility of participant recruitment, randomisation of eligible participants to the intervention and control groups, capture of intervention process measures and collecting outcome and resource measures. The results of the feasibility study will help to determine whether to progress to a fully powered randomised controlled trial.

Decentralised trial platform

An important long-term aim of The TLC Study is to develop a decentralised trial platform for evaluating therapies for Long COVID. This platform will be able to flag eligible participants using GP record data in CPRD Aurum, recruit participants using the CPRD Intervention Research Service Platform, obtain e-consent and baseline data on Atom5 and obtain outcome data from a combination of Atom5 for PROs, and clinical outcomes from GP records and linked hospital episode statistics and ONS mortality data.

Evaluation of PPI

Throughout the project, we will co-evaluate PPI activities with the PPI members and obtain their views on how empowered they felt to meaningfully contribute to the study. The Guidance for Reporting Involvement of Patients and the Public 2 checklist will be used for the reporting and evaluation of PPI for the TLC project.³⁹ Feedback on PPI activity outcomes will be shared with the PPI group.

PATIENT AND PUBLIC INVOLVEMENT

A PPI group comprising up to 15 individuals has been established following the NIHR Include guidance, which includes diverse ethnic and socioeconomic representation.⁴⁰ All study plans have been informed through discussions with the group and through broader discussions with national patient support groups (LongCovidSOS, Long COVID-19 Scotland, Long COVID-19 Wales and Long COVID-19 Support). This has significantly contributed to the development of the SBQ-LC and informed many aspects of the TLC Study more broadly. Research findings will be discussed regularly with the group and revised based on their input accordingly. The PPI group will also inform the development of and contribute to dissemination plans, coauthor publications and prepare lay friendly materials to disseminate research findings to patients and the public. Group members will be reimbursed for their time and any expenses incurred according to the UK standards for public involvement.⁴¹

ETHICS AND DISSEMINATION

Ethical approval for the study was provided by the Solihull Research Ethics Committee (21/WM/0203).

Author affiliations

¹Institute of Applied Health Research, University of Birmingham, Birmingham, UK

²Health Data Research UK (HDR UK) Midlands, Birmingham, UK

³National Institute for Health Research (NIHR) Applied Research Centre West Midlands, Birmingham, UK

⁴Aparito Ltd, Wrexham, UK

⁵Clinical Practice Research Datalink, Medicines and Healthcare Products Regulatory Agency, London, UK

⁶Institute of Inflammation and Ageing, University of Birmingham, Birmingham, UK

⁷Institute of Immunology and Immunotherapy, University of Birmingham, Birmingham, UK

⁸University Hospitals Birmingham NHS Foundation Trust, Birmingham, UK

⁹Institute of Cancer and Genomic Sciences, University of Birmingham, Birmingham, UK

¹⁰Patient Partners, Not applicable, UK

¹¹Institute for Mental Health, University of Birmingham, Birmingham, UK

Twitter Shamil Haroon @ShamilHaroon, Sarah E Hughes @SarahHughesSLT, Grace Turner @gracemturner, Christel McMullan @christel_uob and Dawit T Zemedikun @Dawit_TZ

Contributors SH and MC oversaw and contributed to the drafting of the entire manuscript with input from all coauthors. KN, AS, AKD, TT and GG provided methodological and statistical expertise. JSC and OLA supported drafting the background and co-led the evidence review on postviral syndromes. OLA was academic lead for patient and public involvement. KM, GP, JC, MS-C, SK, YA, DES, LA, MB and HB provided expert patient input based on their lived experience of COVID-19 and its long-term effects. SEH, MC and CM led the development of the Symptom Burden Questionnaire for Long COVID-19. PM, TW, CI and EL provided expertise on Clinical Practice Research Datalink (CPRD) Aurum data and the Interventional Research Service Platform. EHD and CF provided input on the use of Atom5, ePROs and wearables. JL and DW provided subject and methodological expertise on the immunological analyses with input from KM. DTZ and LJ drafted the sections on health economics. GT drafted the section on the over-the-counter medication survey. ES, AB, SM and TM provided clinical and public health expertise. GK supported data extraction from CPRD Aurum and is the creator of Data Extraction for Epidemiological Research. KB and NS-W supported revisions to the manuscript and referencing. AW and KJ provided administrative support for the

project. AW assisted with usability testing and protocol development. All coauthors reviewed and approved the manuscript.

Funding This work is independent research jointly funded by the National Institute for Health Research (NIHR) and UK Research and Innovation (UKRI) (Therapies for Long COVID in non-hospitalised individuals: from symptoms, patient-reported outcomes and immunology to targeted therapies (The TLC Study), COV-LT-0013).

Competing interests MC is Director of the Birmingham Health Partners Centre for Regulatory Science and Innovation, Director of the Centre for Patient Reported Outcomes Research and is a National Institute for Health Research (NIHR) Senior Investigator. MC receives funding from the NIHR Birmingham Biomedical Research Centre (BRC), the NIHR Surgical Reconstruction and Microbiology Research Centre and NIHR ARC West Midlands at the University of Birmingham and University Hospitals Birmingham NHS Foundation Trust, Health Data Research UK, Innovate UK (part of UK Research and Innovation), Macmillan Cancer Support, UCB Pharma, Janssen, GlaxoSmithKline (GSK) and Gilead. MC has received personal fees from Astellas, Aparito, CIS Oncology, Takeda, Merck, Daiichi Sankyo, Glaukos, GSK and the Patient-Centered Outcomes Research Institute (PCORI) outside the submitted work. SEH is supported by the NIHR Applied Research Centre (ARC), West Midlands at the University of Birmingham. SEH has received personal fees from Cochlear and Aparito outside the submitted work. OLA receives funding from the NIHR Birmingham BRC, NIHR ARC, West Midlands at the University of Birmingham and University Hospitals Birmingham NHS Foundation, Innovate UK (part of UK Research and Innovation), Gilead Sciences and Janssen Pharmaceuticals. OLA declares personal fees from Gilead Sciences, GSK and Merck outside the submitted work. CM receives funding from the NIHR Surgical Reconstruction and Microbiology Research Centre, Innovate UK, and has received personal fees from Aparito outside the submitted work. PM, TW, CI and EL are employees of Clinical Practice Research Datalink (CPRD), the data custodians for CPRD Aurum. CPRD is jointly sponsored by the UK government's Medicines and Healthcare Products Regulatory Agency and the NIHR. As a not-for-profit UK government body, CPRD seeks to recoup the cost of delivering its research services to academic, industry and government researchers through research user license fees. JC is a lay member on the UK NICE COVID expert panel, a citizen partner to the COVID END Evidence Synthesis Network, PPI lead on the NIHR CICADA ME Study, patient representative at the EAN European Neurology Autonomic Nervous Systems Disorders Working Group, a member of the MRC/UKRI Advanced Pain Discovery Platform and external board member of Plymouth Institute of Health. She also reports contracts with GSK and Medable.

Patient and public involvement Patients and/or the public were involved in the design, conduct, reporting, and dissemination plans of this research. Refer to the Methods section for further details.

Patient consent for publication Not applicable.

Provenance and peer review Not commissioned; peer reviewed for ethical and funding approval prior to submission.

Open access This is an open access article distributed in accordance with the Creative Commons Attribution 4.0 Unported (CC BY 4.0) license, which permits others to copy, redistribute, remix, transform and build upon this work for any purpose, provided the original work is properly cited, a link to the licence is given, and indication of whether changes were made. See: <https://creativecommons.org/licenses/by/4.0/>.

ORCID iDs

Shamil Haroon <http://orcid.org/0000-0002-0096-1413>

Krishnarajah Nirantharakumar <http://orcid.org/0000-0002-6816-1279>

Sarah E Hughes <http://orcid.org/0000-0001-5656-1198>

Anuradha Subramanian <http://orcid.org/0000-0001-8875-7363>

Olalekan Lee Aiyegbusi <http://orcid.org/0000-0001-9122-8251>

Grace Turner <http://orcid.org/0000-0002-9783-9413>

Christel McMullan <http://orcid.org/0000-0002-0878-1513>

Janet Lord <http://orcid.org/0000-0003-1030-6786>

David C Wraith <http://orcid.org/0000-0003-2147-5614>

Kirsty McGee <http://orcid.org/0000-0002-5593-4252>

Alastair K Denniston <http://orcid.org/0000-0001-7849-0087>

Louise J Jackson <http://orcid.org/0000-0001-8492-0020>

Elizabeth Sapey <http://orcid.org/0000-0003-3454-5482>

George Gkoutos <http://orcid.org/0000-0002-2061-091X>

Tom Marshall <http://orcid.org/0000-0001-9277-5214>

Dawit T Zemedikun <http://orcid.org/0000-0003-3642-0456>

Steven Marwaha <http://orcid.org/0000-0002-0303-9942>

Nikita Simms-Williams <http://orcid.org/0000-0002-4926-1995>

Kirsty Brown <http://orcid.org/0000-0001-9403-1593>

Melanie Calvert <http://orcid.org/0000-0002-1856-837X>

REFERENCES

- 1 GOV.UK. Cases in United Kingdom, 2021. Available: <https://coronavirus.data.gov.uk/details/cases> [Accessed 19 Oct 2021].
- 2 Center for systems science and engineering (CSSE) at John Hopkins University. COVID-19 MAP, 2021. Available: <https://coronavirus.jhu.edu/map.html> [Accessed 19 Oct 2021].
- 3 GOV.UK. Deaths in United Kingdom, 2021. Available: <https://coronavirus.data.gov.uk/details/deaths> [Accessed 19 Oct 2021].
- 4 GOV.UK. Healthcare in United Kingdom, 2021. Available: <https://coronavirus.data.gov.uk/details/healthcare> [Accessed 19 Oct 2021].
- 5 Aiyegbusi OL, Hughes SE, Turner G, *et al.* Symptoms, complications and management of long COVID: a review. *J R Soc Med* 2021;114:428–42.
- 6 Greenhalgh T, Knight M, A'Court C, *et al.* Management of post-acute covid-19 in primary care. *BMJ* 2020;370:m3026.
- 7 National Institute for Health and Care Excellence. COVID-19 rapid guideline: managing the long-term effects of COVID-19, 2020. Available: <https://www.nice.org.uk/guidance/NG188> [Accessed 19 Oct 2021].
- 8 Galeotti C, Bayry J. Autoimmune and inflammatory diseases following COVID-19. *Nat Rev Rheumatol* 2020;16:413–4.
- 9 Whitaker M, Elliott J, Chadeau-Hyam M. Persistent symptoms following SARS-CoV-2 infection in a random community sample of 508,707 people. *medRxiv*.
- 10 Office for National Statistics. Prevalence of ongoing symptoms following coronavirus (COVID-19) infection in the UK: 1 April 2021, 2021. Available: <https://www.ons.gov.uk/peoplepopulationandcommunity/healthandsocialcare/conditionsanddiseases/bulletins/prevalenceofongoingsymptomsfollowingcoronaviruscovid19infectionintheuk/1april2021> [Accessed 28 Oct 2021].
- 11 Sudre CH, Murray B, Varsavsky T. Attributes and predictors of long COVID. *Nat Med* 2021;1–6.
- 12 National Institute for Health Research. NIHR themed review: living with Covid19 2020.
- 13 Maxwell E, Poole R. NIHR themed review: Living with Covid19 - Second review.
- 14 Mahase E. Long covid could be four different syndromes, review suggests. *BMJ* 2020;371:m3981.
- 15 Nabavi N. Long covid: how to define it and how to manage it. *BMJ* 2020;370:m3489.
- 16 Sudre CH, Lee KA, Lochlainn MN, *et al.* Symptom clusters in COVID-19: a potential clinical prediction tool from the COVID symptom study APP. *Sci Adv* 2021;7. doi:10.1126/sciadv.abd4177. [Epub ahead of print: 19 03 2021].
- 17 Brodin P. Immune determinants of COVID-19 disease presentation and severity. *Nat Med* 2021;27:28–33.
- 18 British Society for Immunology. Long-Term immunological health consequences of COVID-19, 2020. Available: https://www.immunology.org/sites/default/files/BSI_Briefing_Note_August_2020_FINAL.pdf [Accessed 19 Oct 2021].
- 19 Nehme J, Borghesan M, Mackedenski S, *et al.* Cellular senescence as a potential mediator of COVID-19 severity in the elderly. *Aging Cell* 2020;19:e13237.
- 20 Mondelli V, Pariante CM. What can neuroimmunology teach us about the symptoms of long-COVID? *Oxf Open Immunol* 2021;2:iqab004.
- 21 Recovery. Welcome — recovery trial, 2020. Available: <https://www.recoverytrial.net/> [Accessed 19 Oct 2021].
- 22 PHOSP. Home - PHOSP-COVID, 2020. Available: <https://phosp.org/> [Accessed 19 Oct 2021].
- 23 PRINCIPLE. Help find treatments for COVID-19 from home, 2021. Available: <https://www.principletrial.org/> [Accessed 2 Nov 2021].
- 24 NIHR. STIMULATE-ICP: understanding long COVID to improve diagnosis, treatment and care, 2020. Available: <https://www.arc-nt.nihr.ac.uk/research/projects/stimulate-icp-improving-diagnosis-treatment-and-care-of-long-covid/> [Accessed 2 Nov 2021].
- 25 LongCovidSOS, 2021. Available: <https://www.longcovidsos.org/> [Accessed 22 Oct 2021].
- 26 Wolf A, Dedman D, Campbell J, *et al.* Data resource profile: clinical practice research Datalink (CPRD) aurum. *Int J Epidemiol* 2019;48:1740–1740g.
- 27 Gokhale KM, Chandan JS, Toulis K, *et al.* Data extraction for epidemiological research (Dexter): a novel tool for automated clinical epidemiology studies. *Eur J Epidemiol* 2021;36:165–78.
- 28 Tibshirani R, Walther G, Hastie T. Estimating the number of clusters in a data set via the gap statistic. *J R Stat Soc Ser B (Statistical Methodol)* 2001;63:411–23.
- 29 Rousseeuw PJ. Silhouettes: a graphical aid to the interpretation and validation of cluster analysis. *J Comput Appl Math* 1987;20:53–65.
- 30 Dalmajer E, Nord CL, Astle D. Statistical power for cluster analysis. *ArXiv* 2020.
- 31 Haroon S, Subramanian A, Gkoutos G. Long COVID in non-hospitalised individuals: symptoms, risk factors and syndromes. *CPRD*, 2021. Available: <https://cprd.com/protocol/long-covid-non-hospitalised-individuals-symptoms-risk-factors-and-syndromes> [Accessed 19 Oct 2021].
- 32 Curtis L, Burns A. *Unit costs of health and social care 2020, personal social services research unit. Canterbury*, 2020.
- 33 NHS. National cost collection for the NHS, 2020. Available: <https://www.england.nhs.uk/national-cost-collection/> [Accessed 26 Oct 2021].
- 34 Jo C. Cost-Of-Illness studies: concepts, scopes, and methods. *Clin Mol Hepatol* 2014;20:327.
- 35 Choi H-J, Lee E-W. Methodology of estimating socioeconomic burden of disease using National health insurance (NHI) data. *Eval Heal Serv*.
- 36 James Lind Alliance. Chapter 8: final priority setting, 2020. Available: <https://www.jla.nihr.ac.uk/jla-guidebook/chapter-8/final-priority-setting.htm> [Accessed 19 Oct 2021].
- 37 Michie S, Atkins L, West R. *The behaviour change wheel: a guide to designing interventions*. London: Silverback, 2014. <http://www.behaviourchangewheel.com/>
- 38 Carter S, Steynor A, Vincent K. A manual for co-production in African weather and climate services: home. Cape town, 2019. Available: <https://futureclimateafrica.org/coproduction-manual/> [Accessed 19 Oct 2021].
- 39 Staniszewska S, Brett J, Simera I. GRIPP2 reporting checklists: tools to improve reporting of patient and public involvement in research. *BMJ* 2017;358:3453.
- 40 National Institute for Health Research. NIHR include guidance (General), 2020. Available: <https://www.learningforinvolvement.org.uk/?opportunity=nihr-include-guidance-general> [Accessed 19 Oct 2021].
- 41 National Institute for Health Research, Chief Scientist Office, Health and Care Research Wales. Uk standards for public involvement, 2019. Available: <https://sites.google.com/nihr.ac.uk/pi-standards/standards?authuser=0> [Accessed 2 Nov 2021].